

**SCREENING REPORT FOR AN ENVIRONMENTAL AUTHORIZATION AS  
REQUIRED BY THE 2014 EIA REGULATIONS – PROPOSED SITE  
ENVIRONMENTAL SENSITIVITY**

**EIA Reference number:**

**Project name:** Eskom Narina Substation EIA

**Project title:** Eskom Narina Substation EIA

**Date screening report generated:** 08/02/2024 14:49:45

**Applicant:** Eskom Holdings

**Compiler:** EIMS

**Compiler signature:**



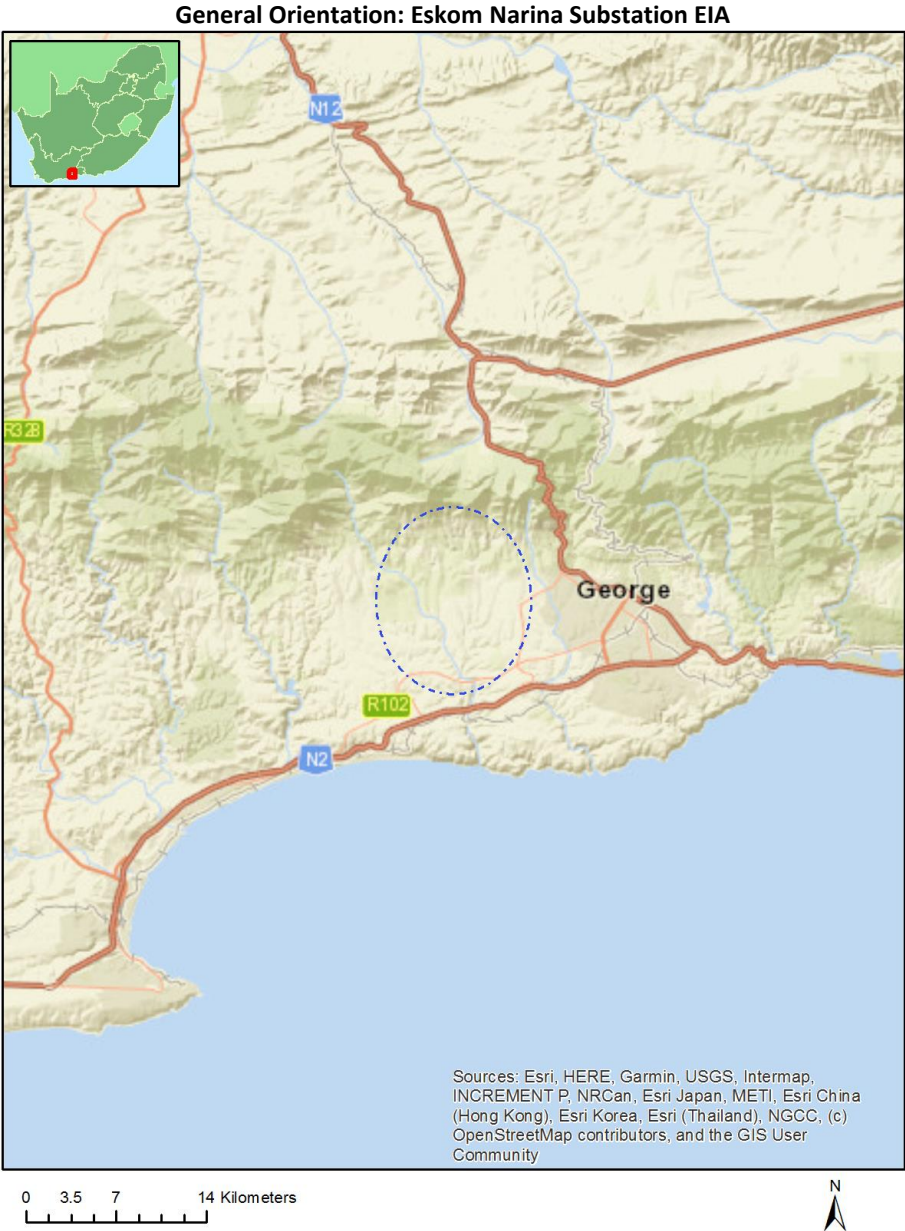
**Application Category:** Utilities Infrastructure | Electricity | Distribution and  
Transmission | Substation

# Table of Contents

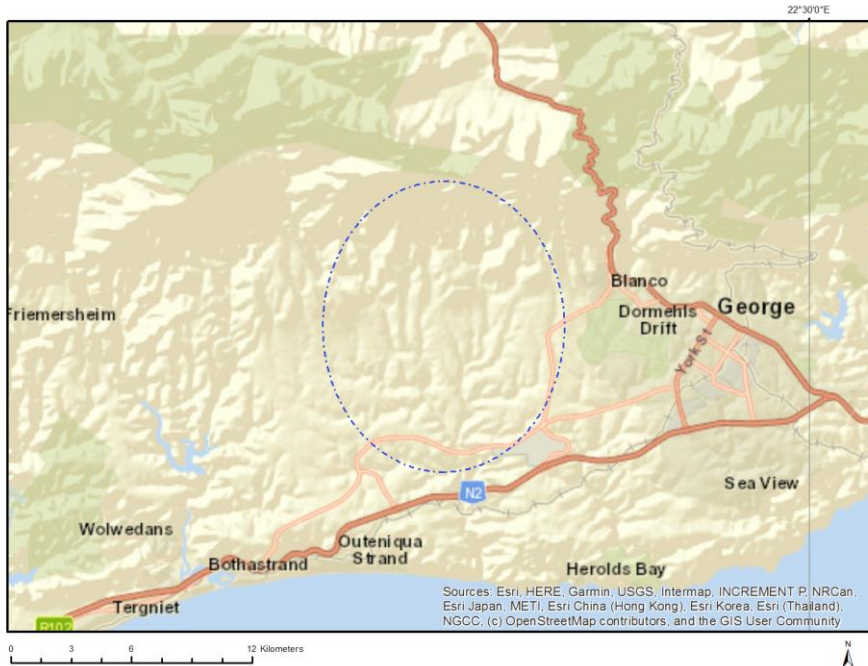
- Proposed Project Location ..... 3
  - Orientation map 1: General location ..... 3
- Map of proposed site and relevant area(s) ..... 4
  - Cadastral details of the proposed site ..... 4
  - Wind and Solar developments with an approved Environmental Authorisation or applications under consideration within 30 km of the proposed area ..... 11
  - Environmental Management Frameworks relevant to the application ..... 11
- Environmental screening results and assessment outcomes ..... 11
  - Relevant development incentives, restrictions, exclusions or prohibitions ..... 11
  - Proposed Development Area Environmental Sensitivity ..... 12
  - Specialist assessments identified ..... 12
- Results of the environmental sensitivity of the proposed area ..... 14
  - MAP OF RELATIVE AGRICULTURE THEME SENSITIVITY ..... 14
  - MAP OF RELATIVE ANIMAL SPECIES THEME SENSITIVITY ..... 15
  - MAP OF RELATIVE AQUATIC BIODIVERSITY THEME SENSITIVITY ..... 16
  - MAP OF RELATIVE ARCHAEOLOGICAL AND CULTURAL HERITAGE THEME SENSITIVITY ..... 17
  - MAP OF RELATIVE CIVIL AVIATION THEME SENSITIVITY ..... 18
  - MAP OF RELATIVE DEFENCE THEME SENSITIVITY ..... 19
  - MAP OF RELATIVE PALEONTOLOGY THEME SENSITIVITY ..... 20
  - MAP OF RELATIVE PLANT SPECIES THEME SENSITIVITY ..... 21
  - MAP OF RELATIVE TERRESTRIAL BIODIVERSITY THEME SENSITIVITY ..... 23

# Proposed Project Location

Orientation map 1: General location



## Map of proposed site and relevant area(s)



## Cadastral details of the proposed site

Property details:

No	Farm Name	Farm/ Erf No	Portion	Latitude	Longitude	Property Type
1	MOOIVELD	229	0	33°58'20.59S	22°20'9.05E	Farm
2	TOLBERG	139	0	33°54'34.26S	22°22'51.62E	Farm
3		323	0	33°58'37.68S	22°18'45.21E	Farm
4		306	0	33°58'38.62S	22°19'34.05E	Farm
5		321	0	33°59'51.49S	22°20'54.75E	Farm
6		322	0	34°0'10.56S	22°21'3.87E	Farm
7	MODDEE RIVIER	209	0	33°57'58.63S	22°23'23.61E	Farm
8	UITKYK	224	0	33°58'25.12S	22°16'55.5E	Farm
9	APPLE GROVE	297	0	33°56'8.97S	22°23'4.62E	Farm
10	BOSCH RUG	210	0	33°57'5.36S	22°22'47.65E	Farm
11	KLYNE FONTYN	218	0	33°56'51.43S	22°17'51.94E	Farm
12	KLEIN FONTEIN BERG	137	0	33°54'23.39S	22°17'33.82E	Farm
13		375	0	33°55'40.15S	22°22'46.21E	Farm
14		302	0	33°56'41.86S	22°23'5.48E	Farm
15		328	0	33°57'50.25S	22°18'37.34E	Farm
16	MOERASRIVIER	233	0	33°58'31.37S	22°21'43.64E	Farm
17	GROOTKLIP	231	0	33°59'11.63S	22°20'32.78E	Farm
18	GWAYANG	208	0	34°0'3.45S	22°23'52.53E	Farm
19	DIEPE KLOOF	226	0	33°59'49.1S	22°17'29.46E	Farm
20	GEELHOUTBOOMSBERG	342	0	33°54'36.81S	22°20'22.29E	Farm
21	BUFFELS DRIFT	227	0	34°0'17.12S	22°19'46.01E	Farm
22		368	0	33°59'49.27S	22°18'44.77E	Farm
23	OUDE TUIN	228	0	33°58'5.78S	22°20'2.44E	Farm
24		318	0	33°56'14.55S	22°21'54.41E	Farm
25	KLEIN BOS	230	0	33°58'44.83S	22°20'10.91E	Farm
26	BOSCH RUG	210	0	33°56'29.43S	22°22'46.76E	Farm
27	MORESON	346	0	33°56'55.4S	22°22'58.26E	Farm

28	KNOETSE KAMA	234	0	34°0'22.07S	22°21'38.87E	Farm
29		359	0	33°58'43.38S	22°22'42.45E	Farm
30	GEELHOUTBOOM	217	0	33°56'37.03S	22°20'5.65E	Farm
31	MOERASRIVIER	233	0	33°59'46.03S	22°20'40.07E	Farm
32	OUWERF	232	0	33°59'30.58S	22°20'46.43E	Farm
33		332	0	34°0'26.64S	22°18'52.22E	Farm
34		309	0	33°58'4.14S	22°18'26.76E	Farm
35	MOERASRIVIER	233	9	33°58'47.05S	22°22'18.92E	Farm Portion
36	MOERASRIVIER	233	12	33°59'2.98S	22°22'2.42E	Farm Portion
37		318	49	33°56'23.97S	22°21'16.13E	Farm Portion
38		318	51	33°56'26.29S	22°21'14.76E	Farm Portion
39		318	54	33°56'26.51S	22°21'13.01E	Farm Portion
40	GEELHOUTBOOM	217	54	33°57'16.54S	22°20'18.36E	Farm Portion
41	GEELHOUTBOOM	217	62	33°56'35.65S	22°20'45.44E	Farm Portion
42	KLYNE FONTYN	218	28	33°57'43.52S	22°19'1.03E	Farm Portion
43	BUFFELS DRIFT	227	21	34°0'44.03S	22°20'49.16E	Farm Portion
44	GEELHOUTBOOM	217	47	33°56'42.15S	22°20'12.96E	Farm Portion
45	DIEPE KLOOF	226	20	33°59'2.4S	22°18'45.78E	Farm Portion
46	KLEIN BOS	230	0	33°58'44.83S	22°20'10.91E	Farm Portion
47		318	31	33°56'2.74S	22°21'20.44E	Farm Portion
48		318	43	33°56'4.25S	22°21'22.27E	Farm Portion
49	GWAYANG	208	56	33°59'49.36S	22°22'35.49E	Farm Portion
50	GEELHOUTBOOM	217	28	33°55'45.03S	22°19'34.01E	Farm Portion
51	MOERASRIVIER	233	82	33°57'47.93S	22°22'28.07E	Farm Portion
52	KLYNE FONTYN	218	26	33°55'41.44S	22°18'42.12E	Farm Portion
53	MODDEE RIVIER	209	34	33°56'52.26S	22°23'13.51E	Farm Portion
54	DIEPE KLOOF	226	44	33°59'17.51S	22°18'50.09E	Farm Portion
55	GEELHOUTBOOM	217	46	33°56'27.88S	22°20'6.94E	Farm Portion
56	MOERASRIVIER	233	13	33°58'51.05S	22°21'31.09E	Farm Portion
57	KLYNE FONTYN	218	40	33°57'51.46S	22°17'44.27E	Farm Portion
58	DIEPE KLOOF	226	16	33°58'56.65S	22°18'15.78E	Farm Portion
59	DIEPE KLOOF	226	28	33°58'45.29S	22°17'34.93E	Farm Portion
60	MOOIVELD	229	0	33°58'20.59S	22°20'9.05E	Farm Portion
61	GROOTKLIP	231	0	33°59'11.63S	22°20'32.78E	Farm Portion
62		318	30	33°56'1.32S	22°21'22.08E	Farm Portion
63		318	33	33°56'4.73S	22°21'19.54E	Farm Portion
64		318	44	33°56'18.56S	22°21'15.08E	Farm Portion
65		318	46	33°56'21.28S	22°21'15.11E	Farm Portion
66		318	57	33°56'27.11S	22°21'11.28E	Farm Portion
67	GEELHOUTBOOM	217	69	33°57'26.23S	22°20'52.04E	Farm Portion
68	MOERASRIVIER	233	86	33°58'29.27S	22°20'42.19E	Farm Portion
69	DIEPE KLOOF	226	45	33°59'13.95S	22°17'52.11E	Farm Portion
70	GEELHOUTBOOM	217	37	33°57'34.65S	22°19'50.68E	Farm Portion
71	GEELHOUTBOOM	217	40	33°57'37.96S	22°20'51.2E	Farm Portion
72	DIEPE KLOOF	226	38	33°58'42.88S	22°18'27.39E	Farm Portion
73	DIEPE KLOOF	226	12	33°58'54.7S	22°18'7.16E	Farm Portion
74	MOERASRIVIER	233	1	33°59'46.03S	22°20'40.07E	Farm Portion
75	MOERASRIVIER	233	11	33°58'51.94S	22°22'11.54E	Farm Portion
76	MOERASRIVIER	233	73	33°58'55.78S	22°21'48.88E	Farm Portion
77		318	47	33°56'21.83S	22°21'16.91E	Farm Portion
78		318	50	33°56'24.96S	22°21'15.29E	Farm Portion
79		318	52	33°56'27.5S	22°21'16.43E	Farm Portion
80		318	55	33°56'25.11S	22°21'12.76E	Farm Portion
81	GEELHOUTBOOM	217	59	33°57'4.11S	22°19'39.97E	Farm Portion
82	GEELHOUTBOOM	217	63	33°56'2.68S	22°20'59.43E	Farm Portion
83	GEELHOUTBOOM	217	48	33°56'17.32S	22°20'34.45E	Farm Portion
84	MODDEE RIVIER	209	57	33°57'9.73S	22°23'16.94E	Farm Portion
85	GEELHOUTBOOMSBERG	342	2	33°55'18.05S	22°19'4.94E	Farm Portion
86	BOSCH RUG	210	8	33°56'26.55S	22°22'55.01E	Farm Portion
87		318	37	33°56'9.44S	22°21'16.69E	Farm Portion

88		318	39	33°56'11.32S	22°21'14.06E	Farm Portion
89	KLYNE FONTYN	218	19	33°57'21.23S	22°16'53.39E	Farm Portion
90	GEELHOUTBOOM	217	36	33°57'30.05S	22°21'13.47E	Farm Portion
91		318	3	33°56'27.54S	22°21'26.97E	Farm Portion
92		318	5	33°56'57.31S	22°21'7.92E	Farm Portion
93	BUFFELS DRIFT	227	1	33°59'21.16S	22°20'11.74E	Farm Portion
94	MODDEE RIVIER	209	102	33°57'37.38S	22°23'1.92E	Farm Portion
95	MORESON	346	1	33°56'59.33S	22°23'11.43E	Farm Portion
96	GEELHOUTBOOMSBERG	342	0	33°54'49.94S	22°20'30.14E	Farm Portion
97	DIEPE KLOOF	226	50	33°59'1.99S	22°18'20.89E	Farm Portion
98	DIEPE KLOOF	226	51	33°59'2.93S	22°18'26.5E	Farm Portion
99	MOERASRIVIER	233	19	33°57'51.01S	22°22'44.23E	Farm Portion
100	MOERASRIVIER	233	23	33°57'48.27S	22°22'39.1E	Farm Portion
101		318	69	33°55'49.68S	22°22'15.39E	Farm Portion
102		302	0	33°56'41.86S	22°23'5.48E	Farm Portion
103		318	34	33°56'5.91S	22°21'18.68E	Farm Portion
104		318	45	33°56'20.01S	22°21'15.1E	Farm Portion
105	MOERASRIVIER	233	92	33°58'46.38S	22°20'31.79E	Farm Portion
106	GEELHOUTBOOM	217	39	33°57'50.51S	22°20'28.15E	Farm Portion
107	BUFFELS DRIFT	227	26	34°0'2.58S	22°20'7.64E	Farm Portion
108	DIEPE KLOOF	226	35	33°59'16.08S	22°18'58.18E	Farm Portion
109	DIEPE KLOOF	226	41	33°58'44.73S	22°17'42.2E	Farm Portion
110	MODDEE RIVIER	209	47	33°57'27.74S	22°22'57.69E	Farm Portion
111	MODDEE RIVIER	209	105	33°57'53.01S	22°22'54.1E	Farm Portion
112	UITKYK	224	8	33°58'26.51S	22°16'55.86E	Farm Portion
113	DIEPE KLOOF	226	52	33°59'1.81S	22°18'32.06E	Farm Portion
114		347	0	33°55'43.57S	22°22'48.87E	Farm Portion
115	GEELHOUTBOOMSBERG	342	3	33°55'13.6S	22°21'5.8E	Farm Portion
116	KLEIN FONTEIN BERG	137	2	33°55'14.99S	22°17'31.98E	Farm Portion
117	BOSCH RUG	210	1	33°57'4.52S	22°22'47.62E	Farm Portion
118		318	40	33°56'11.54S	22°21'15.73E	Farm Portion
119		318	42	33°56'5.59S	22°21'21.18E	Farm Portion
120	GEELHOUTBOOM	217	32	33°55'41.86S	22°20'42.28E	Farm Portion
121	GEELHOUTBOOM	217	34	33°56'47.56S	22°19'22.15E	Farm Portion
122	GEELHOUTBOOM	217	35	33°57'28.13S	22°21'12.53E	Farm Portion
123		318	2	33°55'47.45S	22°22'22.85E	Farm Portion
124	MORESON	346	0	33°56'53.82S	22°22'52.95E	Farm Portion
125	MOERASRIVIER	233	25	33°59'15.2S	22°21'13.65E	Farm Portion
126	KNOETSE KAMA	234	16	34°0'35.76S	22°21'19.85E	Farm Portion
127	KNOETSE KAMA	234	18	34°0'26.6S	22°21'40.78E	Farm Portion
128	KLYNE FONTYN	218	17	33°58'1.88S	22°17'6.24E	Farm Portion
129		309	2	33°58'5.96S	22°18'27.72E	Farm Portion
130	MOERASRIVIER	233	16	33°58'58.82S	22°21'0.83E	Farm Portion
131	MOERASRIVIER	233	55	33°58'14.87S	22°20'36.64E	Farm Portion
132	MOERASRIVIER	233	28	33°59'41.01S	22°21'28.28E	Farm Portion
133	MOERASRIVIER	233	72	33°58'45.42S	22°21'56.11E	Farm Portion
134	BUFFELS DRIFT	227	12	33°59'4.67S	22°20'1.06E	Farm Portion
135	KNOETSE KAMA	234	12	34°0'0.14S	22°21'27.47E	Farm Portion
136	KNOETSE KAMA	234	25	34°0'6.28S	22°22'15.08E	Farm Portion
137	MODDEE RIVIER	209	5	33°57'20.92S	22°23'4.15E	Farm Portion
138	DIEPE KLOOF	226	65	33°58'40.05S	22°18'9.44E	Farm Portion
139	MOERASRIVIER	233	0	33°58'33.48S	22°21'4.81E	Farm Portion
140	DIEPE KLOOF	226	36	33°59'16.26S	22°19'6.76E	Farm Portion
141	KLYNE FONTYN	218	46	33°57'2.61S	22°18'52.15E	Farm Portion
142		318	22	33°55'56.41S	22°21'24.23E	Farm Portion
143		318	25	33°55'59.81S	22°21'22.17E	Farm Portion
144	DIEPE KLOOF	226	61	33°58'57.65S	22°18'46.75E	Farm Portion
145		318	59	33°56'26.99S	22°21'0.89E	Farm Portion
146		318	28	33°56'1.35S	22°21'17.62E	Farm Portion
147		322	0	34°0'10.56S	22°21'3.87E	Farm Portion

148	MOERASRIVIER	233	66	33°59'29.21S	22°22'4.17E	Farm Portion
149	MOERASRIVIER	233	68	33°58'16.32S	22°21'35.1E	Farm Portion
150	GEELHOUTBOOM	217	21	33°56'46.17S	22°19'28.67E	Farm Portion
151	KLYNE FONTYN	218	35	33°57'34.17S	22°18'35.53E	Farm Portion
152	MODDEE RIVIER	209	56	33°57'3.55S	22°23'16.05E	Farm Portion
153	BUFFELS DRIFT	227	34	33°59'2.32S	22°20'17.25E	Farm Portion
154		318	15	33°56'0.92S	22°21'11.86E	Farm Portion
155		318	19	33°55'57.48S	22°21'16.42E	Farm Portion
156	KLYNE FONTYN	218	9	33°57'10.07S	22°19'18.12E	Farm Portion
157	KNOETSE KAMA	234	26	34°0'33.04S	22°21'15.76E	Farm Portion
158	MOERASRIVIER	233	56	33°59'37.82S	22°21'37.45E	Farm Portion
159	GEELHOUTBOOM	217	7	33°55'57.79S	22°20'26.95E	Farm Portion
160	GEELHOUTBOOM	217	13	33°57'32.76S	22°21'9.43E	Farm Portion
161	GEELHOUTBOOM	217	3	33°56'4.78S	22°20'47.47E	Farm Portion
162	MODDEE RIVIER	209	40	33°57'12.57S	22°22'54.68E	Farm Portion
163	OUDE TUIN	228	1	33°58'2.72S	22°20'17.25E	Farm Portion
164		318	17	33°56'1.6S	22°21'10.1E	Farm Portion
165	DIEPE KLOOF	226	53	33°59'5.12S	22°18'37.56E	Farm Portion
166	KLYNE FONTYN	218	5	33°57'12.66S	22°17'54.24E	Farm Portion
167	KNOETSE KAMA	234	20	34°0'26S	22°21'36.41E	Farm Portion
168	MOERASRIVIER	233	62	33°57'47.33S	22°22'36.45E	Farm Portion
169	GEELHOUTBOOM	217	8	33°55'39.32S	22°20'8.68E	Farm Portion
170	BUFFELS DRIFT	227	18	34°0'22.37S	22°19'31.07E	Farm Portion
171	GEELHOUTBOOM	217	9	33°56'10.47S	22°19'59.12E	Farm Portion
172	KNOETSE KAMA	234	15	34°0'30.87S	22°20'58.24E	Farm Portion
173	KLYNE FONTYN	218	43	33°57'44.77S	22°19'24.39E	Farm Portion
174	BUFFELS DRIFT	227	32	34°0'33.82S	22°20'27.75E	Farm Portion
175		318	24	33°55'58.11S	22°21'23.53E	Farm Portion
176		318	27	33°56'0.68S	22°21'18.59E	Farm Portion
177		318	58	33°56'28.17S	22°21'11.99E	Farm Portion
178		318	62	33°56'27.47S	22°20'59.42E	Farm Portion
179	KNOETSE KAMA	234	28	34°0'23.02S	22°21'13.95E	Farm Portion
180		318	29	33°56'2.41S	22°21'17.37E	Farm Portion
181		323	0	33°58'37.68S	22°18'45.21E	Farm Portion
182	MOERASRIVIER	233	67	33°58'1.46S	22°21'27.8E	Farm Portion
183	MOERASRIVIER	233	69	33°58'10.55S	22°21'44.62E	Farm Portion
184	GEELHOUTBOOM	217	22	33°55'38.09S	22°19'49.3E	Farm Portion
185	BUFFELS DRIFT	227	3	34°0'57.69S	22°20'20.76E	Farm Portion
186	BUFFELS DRIFT	227	33	34°0'27.25S	22°20'3.39E	Farm Portion
187		318	4	33°56'16.33S	22°21'57.4E	Farm Portion
188		318	20	33°55'56.06S	22°21'18.73E	Farm Portion
189	GWAYANG	208	52	33°59'56.88S	22°22'23.06E	Farm Portion
190	KLYNE FONTYN	218	13	33°57'6.73S	22°17'37.92E	Farm Portion
191	KNOETSE KAMA	234	23	34°0'20.89S	22°21'36.13E	Farm Portion
192	MOERASRIVIER	233	71	33°58'48.22S	22°21'50.1E	Farm Portion
193	GEELHOUTBOOM	217	14	33°57'26.73S	22°20'45.09E	Farm Portion
194	GEELHOUTBOOM	217	23	33°57'33.14S	22°21'12.8E	Farm Portion
195		318	63	33°56'28.35S	22°20'58.61E	Farm Portion
196	GEELHOUTBOOM	217	61	33°56'28.6S	22°19'35.61E	Farm Portion
197		318	53	33°56'27.96S	22°21'15.1E	Farm Portion
198		318	6	33°57'10.89S	22°20'44.02E	Farm Portion
199	BUFFELS DRIFT	227	19	34°0'40.61S	22°19'56.96E	Farm Portion
200	MOERASRIVIER	233	26	33°58'56.88S	22°21'16.58E	Farm Portion
201	MOERASRIVIER	233	34	33°58'4.42S	22°20'55.71E	Farm Portion
202		318	14	33°56'0.02S	22°21'12.31E	Farm Portion
203	KNOETSE KAMA	234	7	34°0'24.31S	22°21'52.21E	Farm Portion
204	KNOETSE KAMA	234	11	34°0'44.78S	22°21'3.54E	Farm Portion
205	KLYNE FONTYN	218	50	33°56'57.08S	22°19'16.65E	Farm Portion
206	GWAYANG	208	0	33°59'43.92S	22°22'26.94E	Farm Portion
207	TOLBERG	139	0	33°54'34.26S	22°22'51.62E	Farm Portion

208	DIEPE KLOOF	226	54	33°58'56.1S	22°17'17.51E	Farm Portion
209	KNOETSE KAMA	234	27	34°0'29.75S	22°21'34.1E	Farm Portion
210		318	60	33°56'28.42S	22°21'0.52E	Farm Portion
211	GEELHOUTBOOM	217	45	33°56'57.21S	22°20'5.45E	Farm Portion
212	MODDEE RIVIER	209	106	33°58'2.05S	22°23'21.59E	Farm Portion
213	BOSCH RUG	210	6	33°56'26.23S	22°22'47.03E	Farm Portion
214		328	0	33°57'52.63S	22°18'37.48E	Farm Portion
215	DIEPE KLOOF	226	3	33°58'31.2S	22°19'11.89E	Farm Portion
216	MODDEE RIVIER	209	66	33°58'9.01S	22°22'55.83E	Farm Portion
217	GEELHOUTBOOM	217	24	33°56'3.12S	22°20'13.21E	Farm Portion
218		318	35	33°56'7.09S	22°21'18.11E	Farm Portion
219	OUDE TUIN	228	3	33°58'7.38S	22°19'54.78E	Farm Portion
220		321	0	33°59'51.49S	22°20'54.75E	Farm Portion
221		318	18	33°55'59S	22°21'9.33E	Farm Portion
222	MOERASRIVIER	233	90	33°58'13.65S	22°22'39E	Farm Portion
223	MOERASRIVIER	233	75	33°57'24.47S	22°22'5.9E	Farm Portion
224	MOERASRIVIER	233	80	33°57'35.91S	22°22'10.57E	Farm Portion
225	MOERASRIVIER	233	35	33°57'37.84S	22°22'44.56E	Farm Portion
226	DIEPE KLOOF	226	37	33°58'29.05S	22°18'26.89E	Farm Portion
227		318	48	33°56'23.01S	22°21'16.45E	Farm Portion
228	GEELHOUTBOOM	217	43	33°56'3.48S	22°19'11.72E	Farm Portion
229	MODDEE RIVIER	209	98	33°57'42.85S	22°22'59.8E	Farm Portion
230		306	0	33°58'38.62S	22°19'34.05E	Farm Portion
231		318	36	33°56'8.35S	22°21'17.53E	Farm Portion
232	MODDEE RIVIER	209	19	33°57'26.18S	22°23'7.17E	Farm Portion
233	KLYNE FONTYN	218	4	33°56'45.5S	22°17'46.72E	Farm Portion
234	BUFFELS DRIFT	227	29	33°59'12.73S	22°19'35.61E	Farm Portion
235	GEELHOUTBOOM	217	16	33°56'18.46S	22°21'0.87E	Farm Portion
236	KLYNE FONTYN	218	34	33°57'20.6S	22°18'19.83E	Farm Portion
237	KLYNE FONTYN	218	41	33°57'1.21S	22°17'10.57E	Farm Portion
238	BUFFELS DRIFT	227	38	33°59'46.82S	22°20'27.71E	Farm Portion
239	MOERASRIVIER	233	61	33°57'46.64S	22°22'39.83E	Farm Portion
240	MOERASRIVIER	233	70	33°58'31.68S	22°21'42.98E	Farm Portion
241	GEELHOUTBOOM	217	55	33°56'9.3S	22°19'41.04E	Farm Portion
242	GEELHOUTBOOM	217	65	33°55'55.09S	22°20'15.74E	Farm Portion
243	BUFFELS DRIFT	227	37	34°0'59.19S	22°19'6.77E	Farm Portion
244	MOERASRIVIER	233	64	33°58'56.46S	22°20'51.45E	Farm Portion
245	DIEPE KLOOF	226	11	33°58'49.5S	22°17'53.12E	Farm Portion
246	BUFFELS DRIFT	227	0	33°59'41.65S	22°19'53.26E	Farm Portion
247		318	1	33°55'46.78S	22°21'25.88E	Farm Portion
248	MOERASRIVIER	233	10	33°57'52.53S	22°21'23.42E	Farm Portion
249	MOERASRIVIER	233	78	33°57'41.27S	22°21'51.63E	Farm Portion
250	BUFFELS DRIFT	227	16	34°0'46.66S	22°19'2.99E	Farm Portion
251		318	23	33°55'56.82S	22°21'22.45E	Farm Portion
252	DIEPE KLOOF	226	7	33°59'5.04S	22°19'4.89E	Farm Portion
253	BUFFELS DRIFT	227	22	34°0'14.98S	22°20'24.1E	Farm Portion
254	MOERASRIVIER	233	39	33°59'15.42S	22°22'16.24E	Farm Portion
255	MOERASRIVIER	233	7	33°59'32.97S	22°22'22.04E	Farm Portion
256	MODDEE RIVIER	209	65	33°58'29.09S	22°22'57.54E	Farm Portion
257	MOERASRIVIER	233	49	33°57'20.34S	22°22'14.04E	Farm Portion
258	MOERASRIVIER	233	76	33°57'31.95S	22°22'4.59E	Farm Portion
259	GWAYANG	208	68	34°0'3.79S	22°22'37.81E	Farm Portion
260	MOERASRIVIER	233	43	33°58'49.7S	22°20'56.68E	Farm Portion
261	GWAYANG	208	23	33°59'4.59S	22°23'11.82E	Farm Portion
262	GWAYANG	208	39	33°59'15.63S	22°22'57.64E	Farm Portion
263	MOERASRIVIER	233	48	33°57'12.1S	22°22'19.82E	Farm Portion
264	MOERASRIVIER	233	74	33°57'19.38S	22°21'53.41E	Farm Portion
265	MOERASRIVIER	233	97	33°57'36.99S	22°21'56.92E	Farm Portion
266	MOERASRIVIER	233	0	33°57'41.94S	22°22'35.55E	Farm Portion
267		368	1	33°59'42.37S	22°18'18.58E	Farm Portion



268	DIEPE KLOOF	226	46	33°59'40.88S	22°17'53.8E	Farm Portion
269	DIEPE KLOOF	226	57	33°59'38.36S	22°17'26.1E	Farm Portion
270	APPLE GROVE	297	1	33°56'9.04S	22°23'5.12E	Farm Portion
271	GEELHOUTBOOM	217	41	33°57'43.77S	22°21'4.89E	Farm Portion
272	MODDEE RIVIER	209	103	33°57'27.65S	22°23'16.12E	Farm Portion
273		318	32	33°56'3.88S	22°21'20.31E	Farm Portion
274		318	38	33°56'10.48S	22°21'15.99E	Farm Portion
275	MODDEE RIVIER	209	30	33°57'20.31S	22°23'29.03E	Farm Portion
276	BUFFELS DRIFT	227	5	34°0'48.31S	22°19'30.85E	Farm Portion
277	MODDEE RIVIER	209	36	33°56'36.85S	22°23'23.57E	Farm Portion
278	GEELHOUTBOOM	217	57	33°57'38.21S	22°20'11.74E	Farm Portion
279	MOERASRIVIER	233	24	33°57'52.22S	22°22'9.76E	Farm Portion
280	MOERASRIVIER	233	60	33°57'58.64S	22°22'3.66E	Farm Portion
281		318	10	33°56'57.2S	22°22'35.59E	Farm Portion
282	MODDEE RIVIER	209	37	33°56'26.21S	22°23'11.86E	Farm Portion
283	DIEPE KLOOF	226	40	34°0'16.51S	22°18'16.59E	Farm Portion
284	KNOETSE KAMA	234	8	34°0'12.61S	22°21'47.08E	Farm Portion
285	KNOETSE KAMA	234	2	34°0'13.03S	22°21'57.09E	Farm Portion
286	MODDEE RIVIER	209	109	33°58'42.33S	22°23'0.93E	Farm Portion
287	TOLBERG	139	1	33°55'6.61S	22°22'21.42E	Farm Portion
288	GEELHOUTBOOM	217	71	33°57'38.91S	22°21'7.32E	Farm Portion
289	GEELHOUTBOOM	217	72	33°57'22.7S	22°20'37.2E	Farm Portion
290		318	71	33°57'2.19S	22°21'30.51E	Farm Portion
291		318	61	33°56'29.71S	22°21'0.12E	Farm Portion
292		318	73	33°56'28.95S	22°22'24.38E	Farm Portion
293		368	4	33°59'30.08S	22°19'5.1E	Farm Portion
294		368	0	33°59'53.17S	22°18'34.93E	Farm Portion
295	DIEPE KLOOF	226	33	33°59'43.59S	22°18'26.49E	Farm Portion
296	DIEPE KLOOF	226	21	33°59'24.01S	22°18'43.57E	Farm Portion
297	KNOETSE KAMA	234	19	34°0'15.83S	22°21'47.04E	Farm Portion
298	KLYNE FONTYN	218	55	33°56'0.57S	22°17'25.97E	Farm Portion
299	KNOETSE KAMA	234	1	33°59'59.46S	22°22'6.34E	Farm Portion
300	KNOETSE KAMA	234	3	34°0'40.07S	22°21'40.41E	Farm Portion
301		318	13	33°57'33.09S	22°21'24.19E	Farm Portion
302		318	16	33°56'2.13S	22°21'11.79E	Farm Portion
303	MOERASRIVIER	233	29	33°59'35.2S	22°21'50.61E	Farm Portion
304		318	26	33°56'0.29S	22°21'20.48E	Farm Portion
305	MOERASRIVIER	233	91	33°57'56.77S	22°22'34.5E	Farm Portion
306	MODDEE RIVIER	209	71	33°58'26.99S	22°23'18.24E	Farm Portion
307		318	7	33°57'0.02S	22°21'45.77E	Farm Portion
308	MOERASRIVIER	233	81	33°57'41.9S	22°22'18.44E	Farm Portion
309	MOERASRIVIER	233	95	33°57'18.75S	22°22'33.53E	Farm Portion
310	MOERASRIVIER	233	44	33°57'21.89S	22°22'44.28E	Farm Portion
311		368	3	33°59'51.58S	22°19'6.09E	Farm Portion
312		368	2	34°0'4.06S	22°18'15.85E	Farm Portion
313	MODDEE RIVIER	209	48	33°57'34.32S	22°22'51.07E	Farm Portion
314		318	21	33°55'55.03S	22°21'19.74E	Farm Portion
315	GEELHOUTBOOM	217	70	33°57'31.31S	22°20'11.04E	Farm Portion
316	MOERASRIVIER	233	8	33°58'40.56S	22°22'26.23E	Farm Portion
317	MOERASRIVIER	233	57	33°57'50.03S	22°22'12.79E	Farm Portion
318	MODDEE RIVIER	209	104	33°57'33.4S	22°23'28.96E	Farm Portion
319	MODDEE RIVIER	209	102	33°57'39.06S	22°22'54.82E	Farm Portion
320	MODDEE RIVIER	209	116	33°57'36.68S	22°23'1.93E	Farm Portion
321	DIEPE KLOOF	226	7	33°59'24.39S	22°19'0.97E	Farm Portion
322	BUFFELS DRIFT	227	4	33°59'26.01S	22°19'23.31E	Farm Portion
323	KNOETSE KAMA	234	5	34°0'6.56S	22°21'38.84E	Farm Portion
324	MODDEE RIVIER	209	78	33°57'45.12S	22°23'29.49E	Farm Portion
325	MODDEE RIVIER	209	117	33°57'34.5S	22°23'1.63E	Farm Portion
326		332	1	34°0'12.03S	22°19'0.61E	Farm Portion
327		332	0	34°0'33.88S	22°18'48.06E	Farm Portion

328	DIEPE KLOOF	226	48	33°59'45.83S	22°18'8.29E	Farm Portion
329	KNOETSE KAMA	234	10	34°0'0.63S	22°21'47.13E	Farm Portion
330	MODDEE RIVIER	209	113	33°58'38.47S	22°23'16.99E	Farm Portion
331	KLYNE FONTYN	218	47	33°56'23.69S	22°18'52.04E	Farm Portion
332		318	68	33°55'40.17S	22°22'34.05E	Farm Portion
333	DIEPE KLOOF	226	59	34°0'22.44S	22°18'33.17E	Farm Portion
334	DIEPE KLOOF	226	19	34°0'4.27S	22°18'4.53E	Farm Portion
335	KLYNE FONTYN	218	25	33°56'0.26S	22°18'27.77E	Farm Portion
336	GEELHOUTBOOM	217	38	33°57'34.91S	22°20'24.31E	Farm Portion
337		318	79	33°56'7.01S	22°21'35.45E	Farm Portion
338	KLYNE FONTYN	218	49	33°55'40.82S	22°18'12.35E	Farm Portion
339	MODDEE RIVIER	209	66	33°58'10.3S	22°22'56.24E	Farm Portion
340	DIEPE KLOOF	226	22	33°59'39.87S	22°18'26.6E	Farm Portion
341	DIEPE KLOOF	226	25	33°59'28.17S	22°18'30.84E	Farm Portion
342	KNOETSE KAMA	234	24	34°0'15.38S	22°21'44.01E	Farm Portion
343	KLYNE FONTYN	218	54	33°55'49.88S	22°17'53.95E	Farm Portion
344	MODDEE RIVIER	209	114	33°58'9.26S	22°23'7.19E	Farm Portion
345	MODDEE RIVIER	209	115	33°58'24.2S	22°23'16.79E	Farm Portion
346	DIEPE KLOOF	226	28	33°58'49.59S	22°17'35.46E	Farm Portion
347	MODDEE RIVIER	209	118	33°58'40.9S	22°23'11.4E	Farm Portion
348	KNOETSE KAMA	234	14	34°0'24.71S	22°21'17.3E	Farm Portion
349		318	69	33°56'24.06S	22°21'39.79E	Farm Portion
350		318	75	33°56'4.07S	22°22'27.84E	Farm Portion
351	DIEPE KLOOF	226	47	33°59'24.29S	22°18'8.42E	Farm Portion
352	KLYNE FONTYN	218	15	33°56'25.82S	22°18'28.19E	Farm Portion
353	KLYNE FONTYN	218	44	33°56'42.03S	22°18'48.08E	Farm Portion
354	MODDEE RIVIER	209	109	33°58'41.34S	22°23'0.38E	Farm Portion
355	KLEIN FONTEIN BERG	137	0	33°54'34.42S	22°17'30.86E	Farm Portion
356		318	76	33°55'41.37S	22°21'59.75E	Farm Portion
357	GEELHOUTBOOM	217	53	33°57'8.85S	22°19'33.96E	Farm Portion
358	GEELHOUTBOOM	217	67	33°57'37.91S	22°20'13.34E	Farm Portion
359	GEELHOUTBOOM	217	51	33°57'35.42S	22°20'12.15E	Farm Portion
360	MOERASRIVIER	233	59	33°57'54.84S	22°22'7.3E	Farm Portion
361	MOERASRIVIER	233	18	33°57'56.29S	22°21'47.54E	Farm Portion
362	MOERASRIVIER	233	45	33°57'35.27S	22°22'32.68E	Farm Portion
363	BUFFELS DRIFT	227	24	34°0'20.9S	22°19'8.9E	Farm Portion
364	DIEPE KLOOF	226	39	33°59'45.57S	22°18'23.37E	Farm Portion
365	KNOETSE KAMA	234	6	34°0'18.35S	22°21'45.3E	Farm Portion
366	KNOETSE KAMA	234	21	34°0'18.33S	22°22'4.05E	Farm Portion
367		359	0	33°58'50.96S	22°22'53.38E	Farm Portion
368		375	0	33°55'40.15S	22°22'46.21E	Farm Portion
369		318	67	33°56'0.11S	22°22'45.96E	Farm Portion
370	TOLBERG	139	0	33°54'38.57S	22°22'51.96E	Farm Portion
371	GEELHOUTBOOM	217	73	33°57'36.78S	22°20'48.01E	Farm Portion
372		318	72	33°56'59.22S	22°22'19.38E	Farm Portion
373		318	70	33°57'5.7S	22°20'51.69E	Farm Portion
374		318	74	33°56'11.4S	22°21'58.88E	Farm Portion
375	DIEPE KLOOF	226	18	33°58'30.09S	22°18'7.65E	Farm Portion
376	OUWERF	232	0	33°59'30.58S	22°20'46.43E	Farm Portion
377		318	41	33°56'6.72S	22°21'20.37E	Farm Portion
378		318	56	33°56'26.07S	22°21'11.94E	Farm Portion
379	MOERASRIVIER	233	84	33°58'41.87S	22°20'38.1E	Farm Portion
380		318	8	33°56'27.25S	22°22'27.05E	Farm Portion
381	MOERASRIVIER	233	22	33°59'31.53S	22°21'13.56E	Farm Portion
382	MODDEE RIVIER	209	38	33°57'14.34S	22°23'21.79E	Farm Portion
383	GEELHOUTBOOM	217	66	33°57'32.51S	22°20'11.37E	Farm Portion
384	MOERASRIVIER	233	37	33°57'51.61S	22°22'20.59E	Farm Portion
385	GWAYANG	208	21	33°59'27.25S	22°22'42.05E	Farm Portion
386		318	9	33°57'3.53S	22°22'22.73E	Farm Portion
387	MOERASRIVIER	233	46	33°57'28.99S	22°22'26.64E	Farm Portion

388	BUFFELS DRIFT	227	30	33°59'54.88S	22°19'35.22E	Farm Portion
389	KLEIN FONTEIN BERG	137	0	33°54'38.31S	22°17'30.33E	Farm Portion
390		318	2	33°55'45.89S	22°22'16.18E	Farm Portion
391	MODDEE RIVIER	209	119	33°58'25.19S	22°23'17.72E	Farm Portion
392	GEELHOUTBOOM	217	71	33°57'33.18S	22°20'49.54E	Farm Portion
393		318	78	33°56'21.22S	22°21'17.44E	Farm Portion
394		318	77	33°55'44.42S	22°22'20.56E	Farm Portion

Development footprint<sup>1</sup> vertices:  
No development footprint(s) specified.

## Wind and Solar developments with an approved Environmental Authorisation or applications under consideration within 30 km of the proposed area

No	EIA Reference No	Classification	Status of application	Distance from proposed area (km)
1	14/12/16/3/3/1/1292	Solar PV	Approved	1.3
2	14/12/16/3/3/1/1292/AM1	Solar PV	Approved	1.3

## Environmental Management Frameworks relevant to the application

No intersections with EMF areas found.

## Environmental screening results and assessment outcomes

The following sections contain a summary of any development incentives, restrictions, exclusions or prohibitions that apply to the proposed development site as well as the most environmental sensitive features on the site based on the site sensitivity screening results for the application classification that was selected. The application classification selected for this report is:

**Utilities Infrastructure | Electricity | Distribution and Transmission | Substation.**

## Relevant development incentives, restrictions, exclusions or prohibitions

The following development incentives, restrictions, exclusions or prohibitions and their implications that apply to this site are indicated below.

Incentive, restriction or prohibition	Implication
Strategic Gas Pipeline Corridors-Phase 2: Mossel Bay to Coega	<a href="https://screening.environment.gov.za/ScreeningDownloads/DevelopmentZones/Combined_GAS.pdf">https://screening.environment.gov.za/ScreeningDownloads/DevelopmentZones/Combined_GAS.pdf</a>
South African	<a href="https://screening.environment.gov.za/ScreeningDownloads/DevelopmentZones/Combined_GAS.pdf">https://screening.environment.gov.za/ScreeningDownloads/DevelopmentZones/Combined_GAS.pdf</a>

<sup>1</sup> “development footprint”, means the area within the site on which the development will take place and includes all ancillary developments for example roads, power lines, boundary walls, paving etc. which require vegetation clearance or which will be disturbed and for which the application has been submitted.

Conservation Areas	<a href="#">tZones/SACAD_OR_2023_Q3_Metadata.pdf</a>
Main Electricity Distribution Substation	<a href="https://screening.environment.gov.za/ScreeningDownloads/DevelopmentZones/Distribution_Transmission.pdf">https://screening.environment.gov.za/ScreeningDownloads/DevelopmentZones/Distribution_Transmission.pdf</a>

### Proposed Development Area Environmental Sensitivity

The following summary of the development site environmental sensitivities is identified. Only the highest environmental sensitivity is indicated. The footprint environmental sensitivities for the proposed development footprint as identified, are indicative only and must be verified on site by a suitably qualified person before the specialist assessments identified below can be confirmed.

Theme	Very High sensitivity	High sensitivity	Medium sensitivity	Low sensitivity
Agriculture Theme	X			
Animal Species Theme		X		
Aquatic Biodiversity Theme	X			
Archaeological and Cultural Heritage Theme	X			
Civil Aviation Theme	X			
Defence Theme				X
Paleontology Theme		X		
Plant Species Theme			X	
Terrestrial Biodiversity Theme	X			

### Specialist assessments identified

Based on the selected classification, and the known impacts associated with the proposed development, the following list of specialist assessments have been identified for inclusion in the assessment report. It is the responsibility of the EAP to confirm this list and to motivate in the assessment report, the reason for not including any of the identified specialist study including the provision of photographic evidence of the site situation.

No	Specialist assessment	Assessment Protocol
1	Agricultural Impact Assessment	<a href="https://screening.environment.gov.za/ScreeningDownloads/AssessmentProtocols/Gazetted_General_Agriculture_Assessment_Protocols.pdf">https://screening.environment.gov.za/ScreeningDownloads/AssessmentProtocols/Gazetted_General_Agriculture_Assessment_Protocols.pdf</a>
2	Archaeological and Cultural Heritage Impact Assessment	<a href="https://screening.environment.gov.za/ScreeningDownloads/AssessmentProtocols/Gazetted_General_Requirement_Assessment_Protocols.pdf">https://screening.environment.gov.za/ScreeningDownloads/AssessmentProtocols/Gazetted_General_Requirement_Assessment_Protocols.pdf</a>
3	Palaeontology Impact Assessment	<a href="https://screening.environment.gov.za/ScreeningDownloads/AssessmentProtocols/Gazetted_General_Requirement_Assessment_Protocols.pdf">https://screening.environment.gov.za/ScreeningDownloads/AssessmentProtocols/Gazetted_General_Requirement_Assessment_Protocols.pdf</a>
4	Terrestrial Biodiversity Impact Assessment	<a href="https://screening.environment.gov.za/ScreeningDownloads/AssessmentProtocols/Gazetted_Terrestrial_Biodiversity_Assessment_Protocols.pdf">https://screening.environment.gov.za/ScreeningDownloads/AssessmentProtocols/Gazetted_Terrestrial_Biodiversity_Assessment_Protocols.pdf</a>
5	Aquatic Biodiversity Impact Assessment	<a href="https://screening.environment.gov.za/ScreeningDownloads/AssessmentProtocols/Gazetted_Aquatic_Biodiversity_Assessment_Protocols.pdf">https://screening.environment.gov.za/ScreeningDownloads/AssessmentProtocols/Gazetted_Aquatic_Biodiversity_Assessment_Protocols.pdf</a>
6	Geotechnical Assessment	<a href="https://screening.environment.gov.za/ScreeningDownloads/AssessmentProtocols/Gazetted_General_Requirement_Assessment_Protocols.pdf">https://screening.environment.gov.za/ScreeningDownloads/AssessmentProtocols/Gazetted_General_Requirement_Assessment_Protocols.pdf</a>

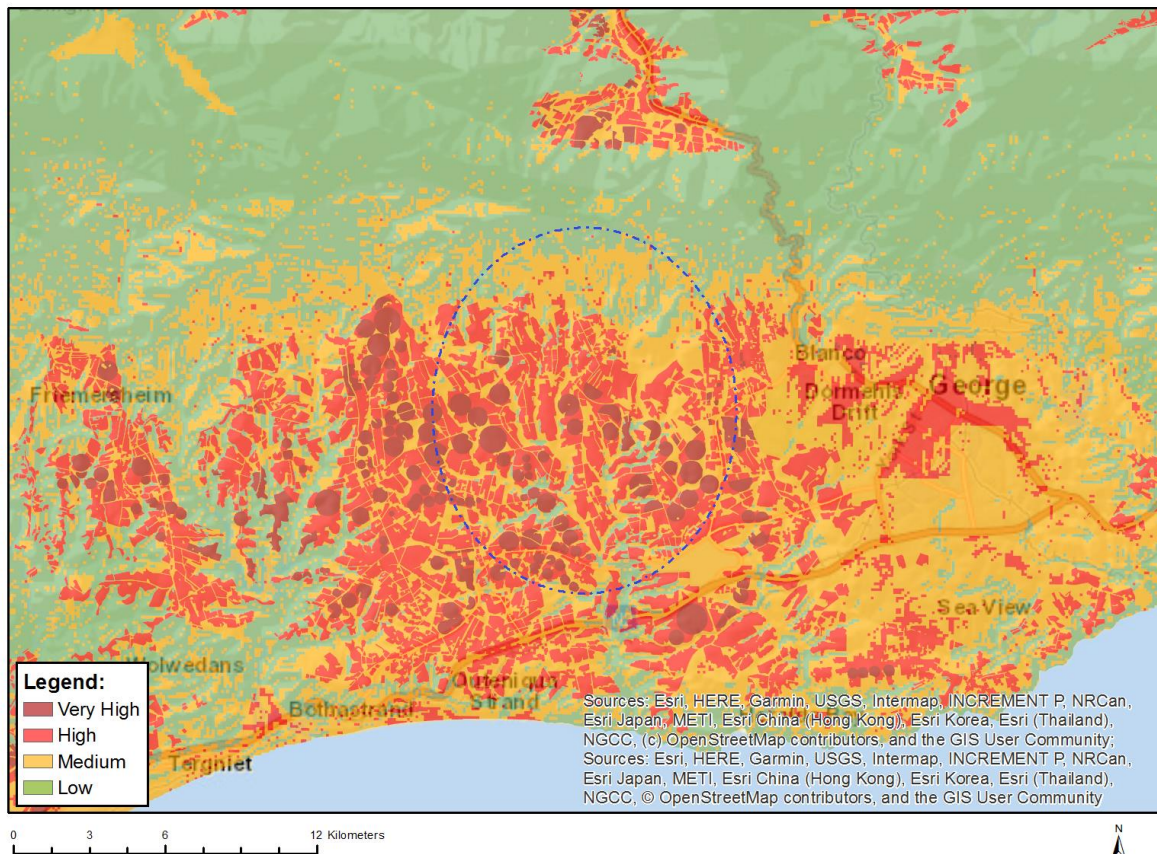
		<a href="#">rotocols.pdf</a>
7	Plant Species Assessment	<a href="https://screening.environment.gov.za/ScreeningDownloads/AssessmentProtocols/Gazetted_Plant_Species_Assessment_Protocols.pdf">https://screening.environment.gov.za/ScreeningDownloads/AssessmentProtocols/Gazetted Plant Species Assessment Protocols.pdf</a>
8	Animal Species Assessment	<a href="https://screening.environment.gov.za/ScreeningDownloads/AssessmentProtocols/Gazetted_Animal_Species_Assessment_Protocols.pdf">https://screening.environment.gov.za/ScreeningDownloads/AssessmentProtocols/Gazetted Animal Species Assessment Protocols.pdf</a>

OFFICIAL

## Results of the environmental sensitivity of the proposed area.

The following section represents the results of the screening for environmental sensitivity of the proposed site for relevant environmental themes associated with the project classification. It is the duty of the EAP to ensure that the environmental themes provided by the screening tool are comprehensive and complete for the project. Refer to the disclaimer.

### MAP OF RELATIVE AGRICULTURE THEME SENSITIVITY



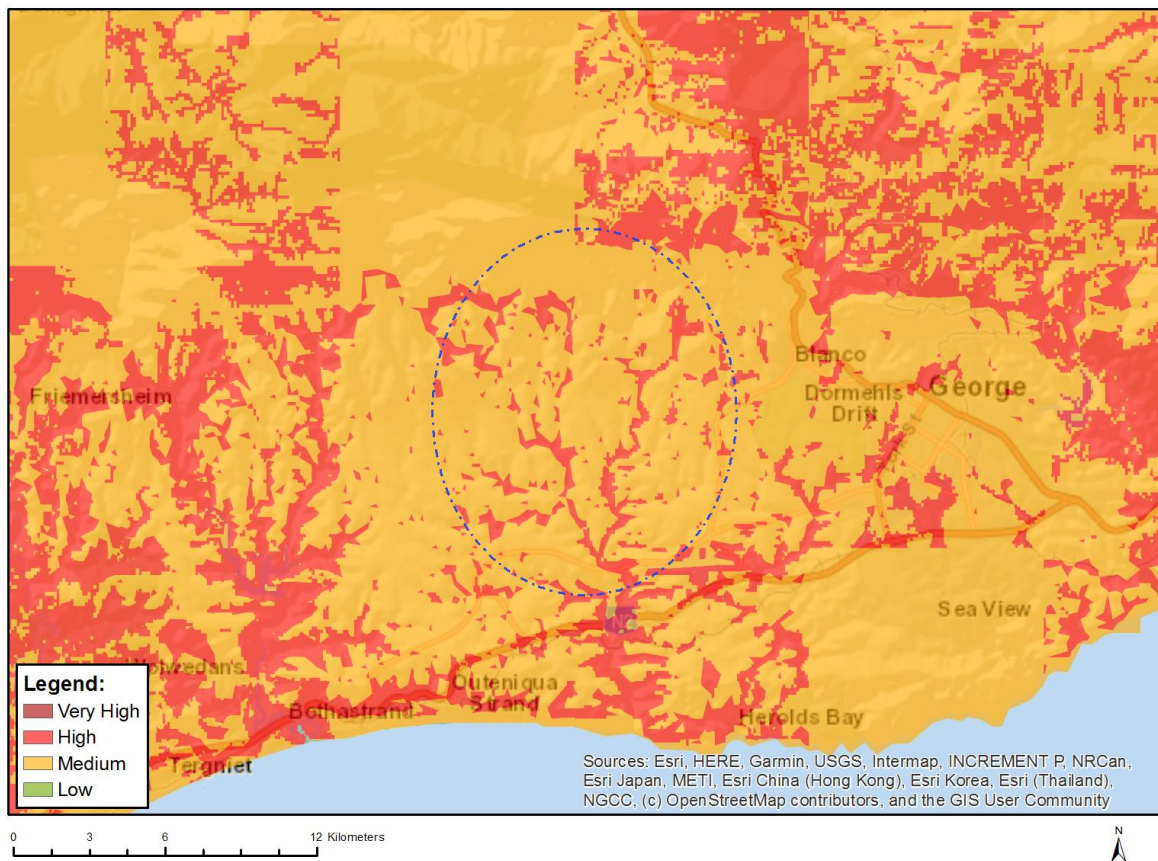
Very High sensitivity	High sensitivity	Medium sensitivity	Low sensitivity
X			

#### Sensitivity Features:

Sensitivity	Feature(s)
High	Land capability;09. Moderate-High/10. Moderate-High
High	Annual Crop Cultivation / Planted Pastures Rotation;Land capability;06. Low-Moderate/07. Low-Moderate/08. Moderate
High	Annual Crop Cultivation / Planted Pastures Rotation;Land capability;01. Very low/02. Very low/03. Low-Very low/04. Low-Very low/05. Low
High	Annual Crop Cultivation / Planted Pastures Rotation;Land capability;09. Moderate-High/10. Moderate-High
Low	Land capability;01. Very low/02. Very low/03. Low-Very low/04. Low-Very low/05. Low
Medium	Land capability;06. Low-Moderate/07. Low-Moderate/08. Moderate
Very High	Land capability;11. High/12. High-Very high/13. High-Very high/14. Very high/15. Very high

Very High	Horticulture;Land capability;01. Very low/02. Very low/03. Low-Very low/04. Low-Very low/05. Low
Very High	Horticulture;Land capability;06. Low-Moderate/07. Low-Moderate/08. Moderate
Very High	Pivot Irrigation;Land capability;01. Very low/02. Very low/03. Low-Very low/04. Low-Very low/05. Low
Very High	Pivot Irrigation;Land capability;06. Low-Moderate/07. Low-Moderate/08. Moderate

## MAP OF RELATIVE ANIMAL SPECIES THEME SENSITIVITY



Where only a sensitive plant unique number or sensitive animal unique number is provided in the screening report and an assessment is required, the environmental assessment practitioner (EAP) or specialist is required to email SANBI at [eiadatarequests@sanbi.org.za](mailto:eiadatarequests@sanbi.org.za) listing all sensitive species with their unique identifiers for which information is required. The name has been withheld as the species may be prone to illegal harvesting and must be protected. SANBI will release the actual species name after the details of the EAP or specialist have been documented.

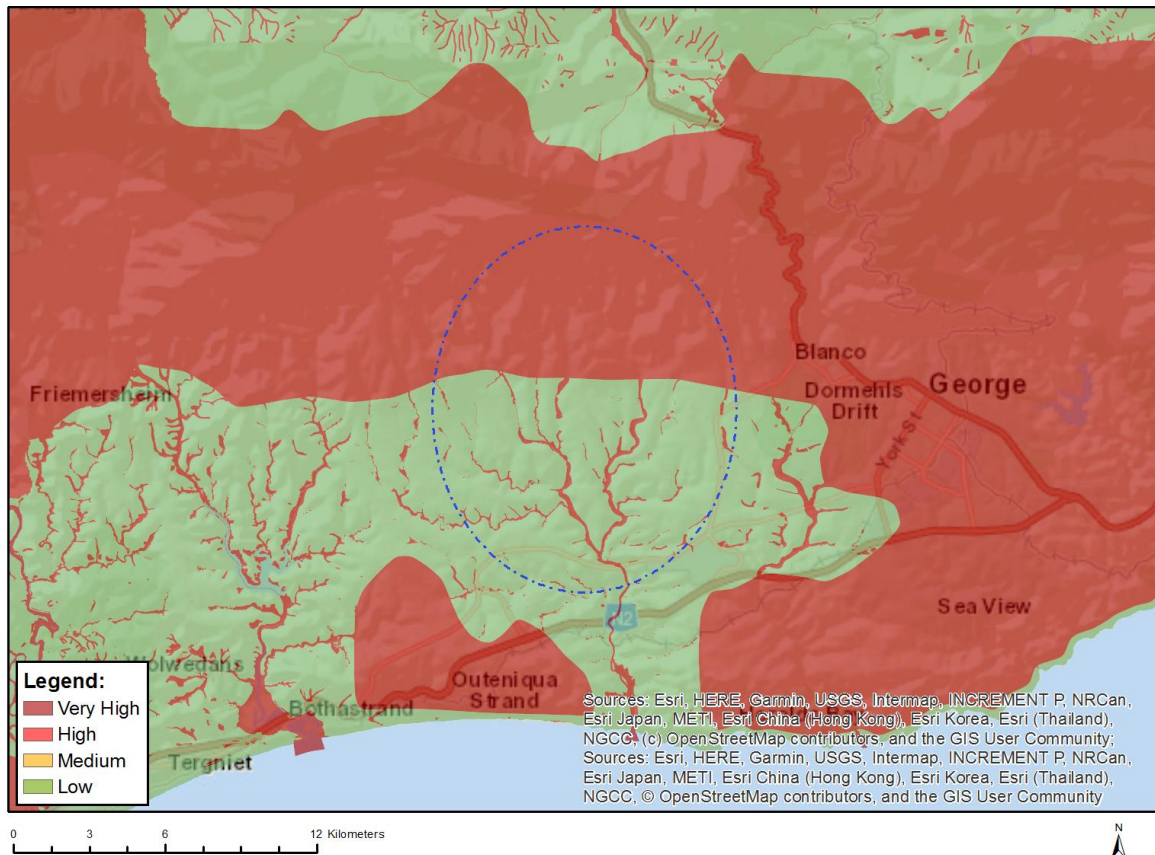
Very High sensitivity	High sensitivity	Medium sensitivity	Low sensitivity
	X		

### Sensitivity Features:

Sensitivity	Feature(s)
High	Aves-Circus ranivorus
High	Aves-Neotis denhami
High	Aves-Bradypterus sylvaticus
High	Aves-Sarothrura affinis
Medium	Amphibia-Afrixalus knysnae
Medium	Aves-Podica senegalensis
Medium	Aves-Circus ranivorus
Medium	Aves-Stephanoaetus coronatus

Medium	Aves-Hydroprogne caspia
Medium	Aves-Neotis denhami
Medium	Aves-Bradypterus sylvaticus
Medium	Aves-Sarothrura affinis
Medium	Insecta-Tsitana dicksoni
Medium	Sensitive species 8
Medium	Invertebrate-Forest invertebrate
Medium	Invertebrate-Aneuryphymus montanus

## MAP OF RELATIVE AQUATIC BIODIVERSITY THEME SENSITIVITY



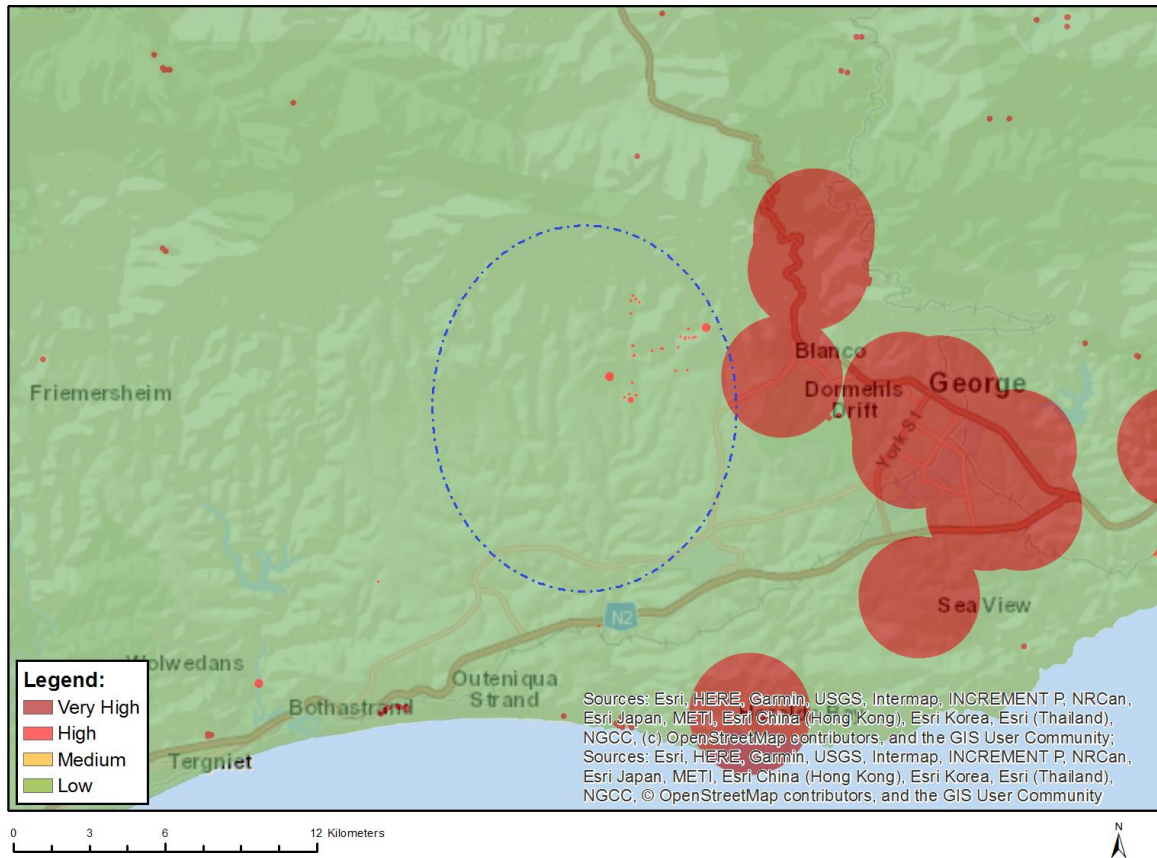
Very High sensitivity	High sensitivity	Medium sensitivity	Low sensitivity
X			

### Sensitivity Features:

Sensitivity	Feature(s)
Low	Low sensitivity
Very High	CBA 1: Aquatic
Very High	CBA 2: Aquatic (degraded)
Very High	ESA 1: Aquatic
Very High	Rivers_C
Very High	SWSA (SW) _Outeniqua
Very High	Wetlands _Eastern Fynbos-Renosterveld Bioregion (Depression)
Very High	Wetlands _Eastern Fynbos-Renosterveld Bioregion (Seep)
Very High	Wetlands _Eastern Fynbos-Renosterveld Bioregion (Valley-bottom)



## MAP OF RELATIVE ARCHAEOLOGICAL AND CULTURAL HERITAGE THEME SENSITIVITY

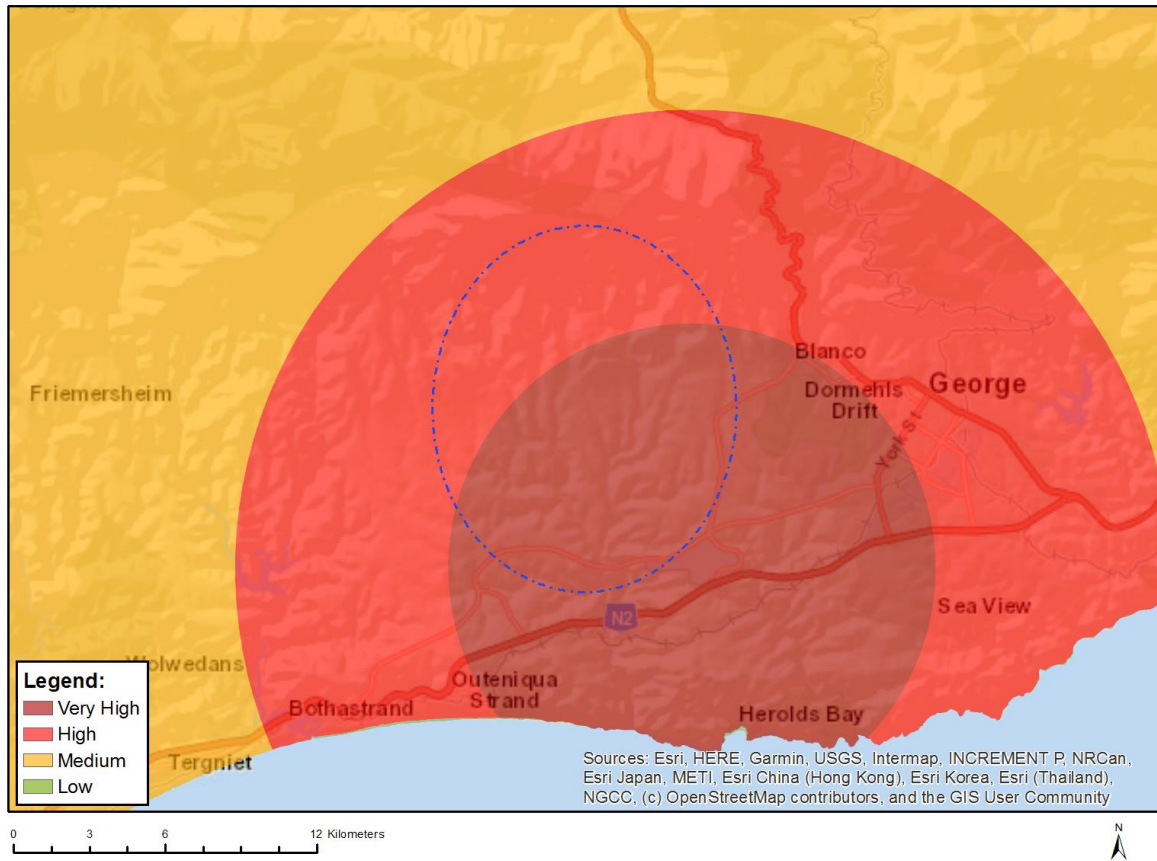


Very High sensitivity	High sensitivity	Medium sensitivity	Low sensitivity
X			

### Sensitivity Features:

Sensitivity	Feature(s)
High	Within 150m of a Grade IIIa Heritage site
High	Within 100m of a Grade IIIb Heritage site
High	Within 50m of a Grade IIIc Heritage site
Low	Low sensitivity
Very High	Within 2km of a Grade II Heritage site

## MAP OF RELATIVE CIVIL AVIATION THEME SENSITIVITY

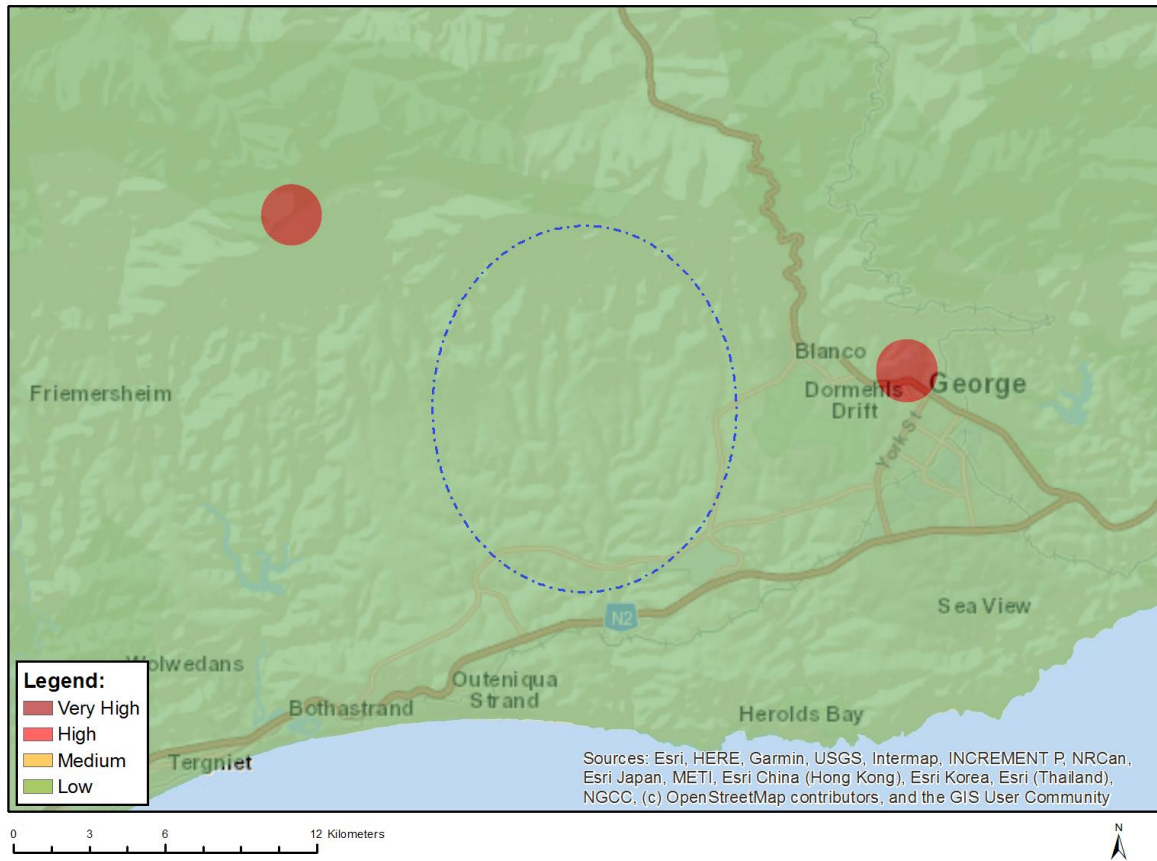


Very High sensitivity	High sensitivity	Medium sensitivity	Low sensitivity
X			

### Sensitivity Features:

Sensitivity	Feature(s)
High	Within 15 km of a civil aviation radar
High	Between 8 and 15 km from a major civil aviation aerodrome
Medium	Within 5 km of an air traffic control or navigation site
Very High	Within 8 km of a major civil aviation aerodrome

## MAP OF RELATIVE DEFENCE THEME SENSITIVITY

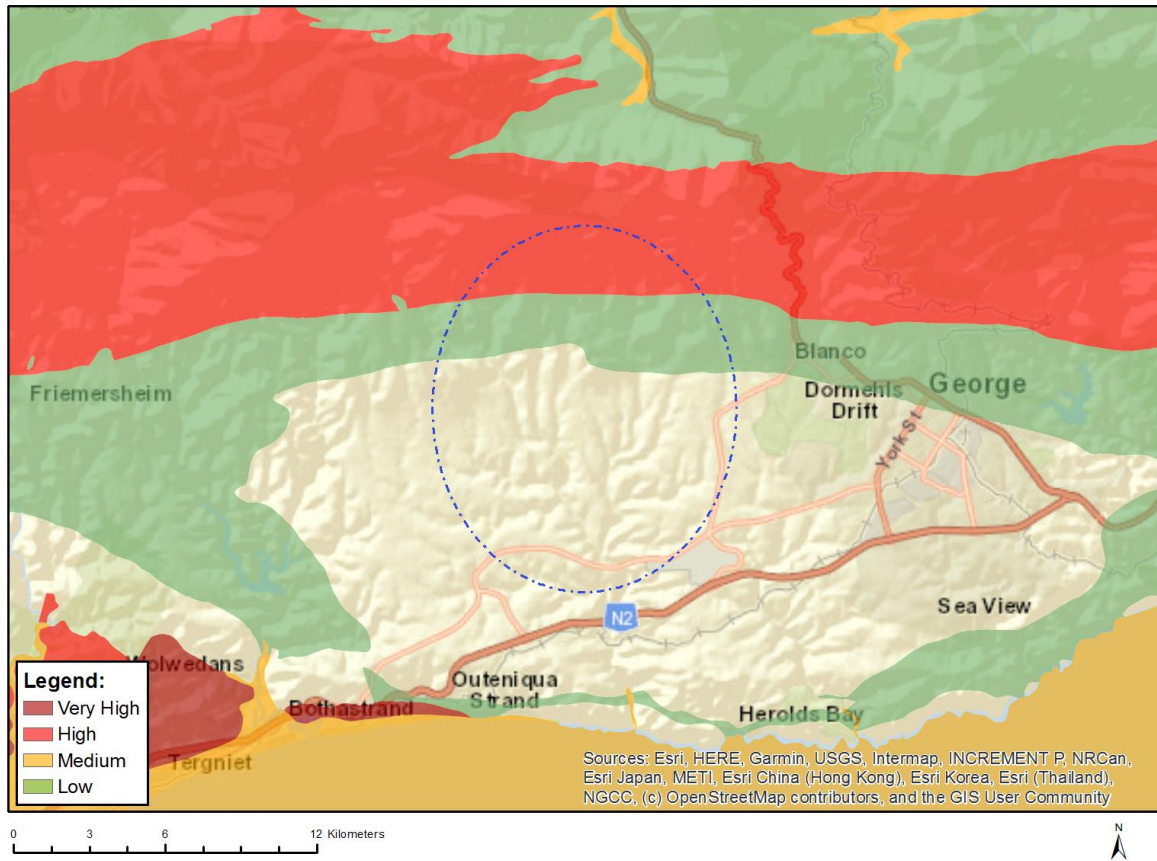


Very High sensitivity	High sensitivity	Medium sensitivity	Low sensitivity
			X

### Sensitivity Features:

Sensitivity	Feature(s)
Low	Low Sensitivity

## MAP OF RELATIVE PALEONTOLOGY THEME SENSITIVITY

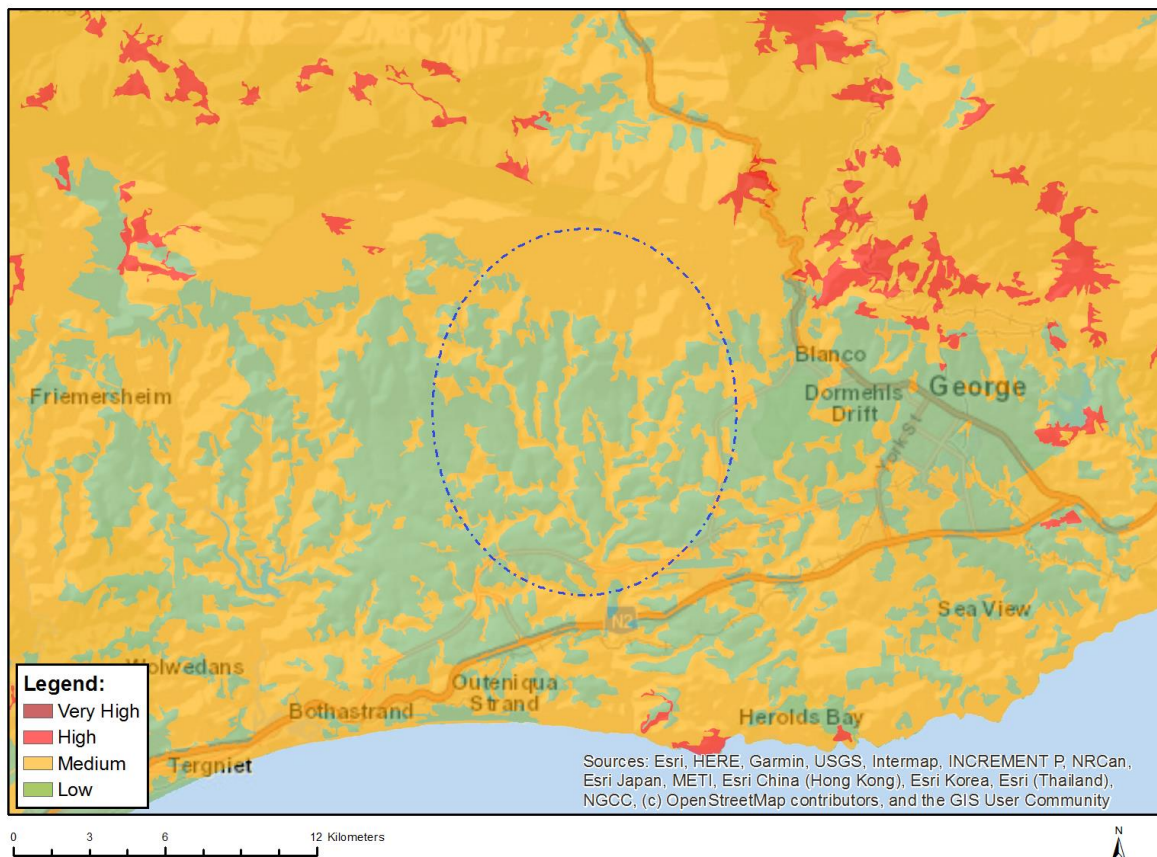


Very High sensitivity	High sensitivity	Medium sensitivity	Low sensitivity
	X		

### Sensitivity Features:

Sensitivity	Feature(s)
High	Features with a High paleontological sensitivity
Low	Features with a Low paleontological sensitivity

## MAP OF RELATIVE PLANT SPECIES THEME SENSITIVITY



Where only a sensitive plant unique number or sensitive animal unique number is provided in the screening report and an assessment is required, the environmental assessment practitioner (EAP) or specialist is required to email SANBI at [eiadatarequests@sanbi.org.za](mailto:eiadatarequests@sanbi.org.za) listing all sensitive species with their unique identifiers for which information is required. The name has been withheld as the species may be prone to illegal harvesting and must be protected. SANBI will release the actual species name after the details of the EAP or specialist have been documented.

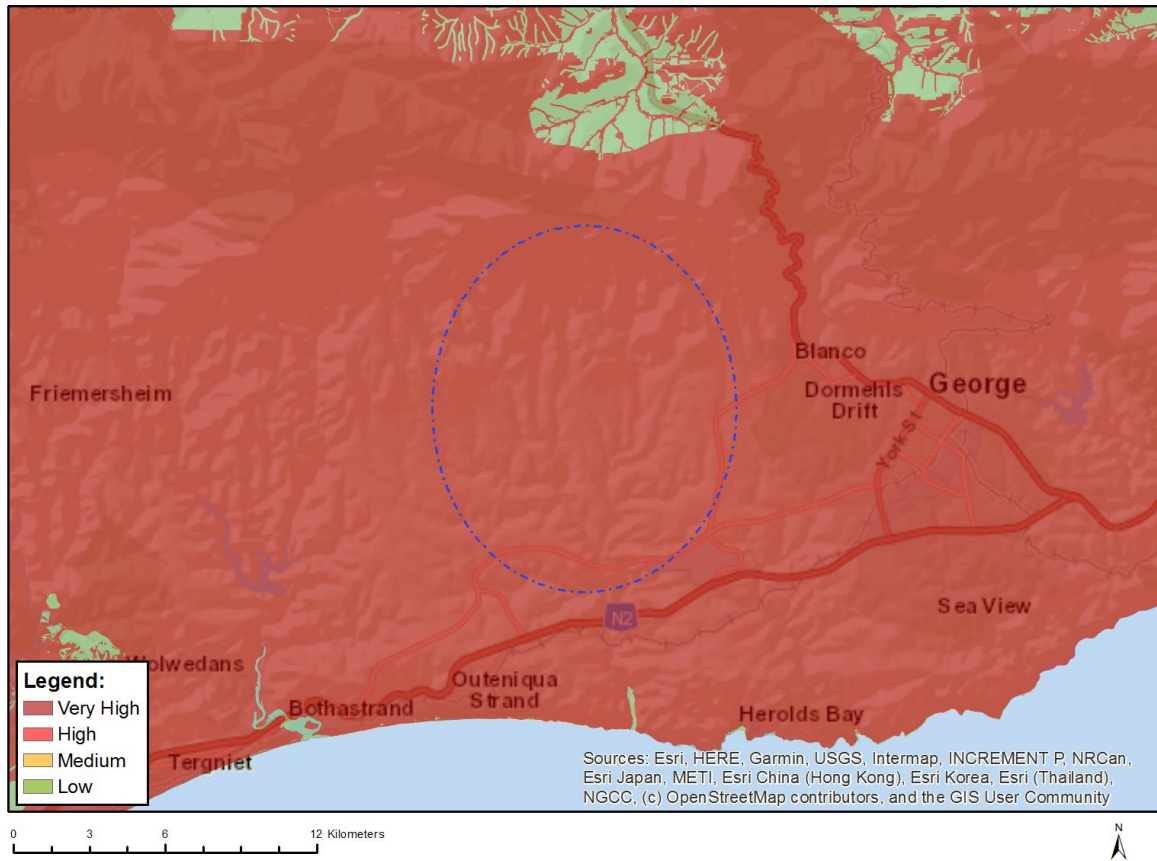
Very High sensitivity	High sensitivity	Medium sensitivity	Low sensitivity
		X	

### Sensitivity Features:

Sensitivity	Feature(s)
Low	Low Sensitivity
Medium	Ocotea bullata
Medium	Lampranthus pauciflorus
Medium	Amphithalea axillaris
Medium	Psoralea sp. nov. (Stirton & Zantovska 11582 NU)
Medium	Psoralea diturnerae
Medium	Aspalathus bowieana
Medium	Rafnia vlokii
Medium	Thesium susannae
Medium	Leucadendron olens
Medium	Leucospermum glabrum
Medium	Mimetes pauciflorus
Medium	Mimetes splendidus

Medium	<i>Selago burchellii</i>
Medium	<i>Nemesia elata</i>
Medium	<i>Psydrax capensis</i>
Medium	<i>Freesia fergusoniae</i>
Medium	Sensitive species 1081
Medium	<i>Lobelia ardisiandroides</i>
Medium	Sensitive species 419
Medium	<i>Oxalis stellata</i> var. <i>gracilior</i>
Medium	<i>Erica aneimensa</i>
Medium	<i>Erica inconstans</i>
Medium	<i>Erica stylaris</i>
Medium	<i>Erica outeniquae</i>
Medium	<i>Erica unicolor</i> subsp. <i>mutica</i>
Medium	<i>Erica unicolor</i> subsp. <i>georgensis</i>
Medium	<i>Erica croceovirens</i>
Medium	<i>Erica glandulosa</i> subsp. <i>fourcadei</i>
Medium	Sensitive species 1077
Medium	Sensitive species 633
Medium	Sensitive species 268
Medium	Sensitive species 514
Medium	Sensitive species 1024
Medium	Sensitive species 1032
Medium	<i>Zyrphelis outeniquae</i>
Medium	<i>Osteospermum pterigoideum</i>
Medium	<i>Agathosma rehmanniana</i>
Medium	<i>Acmadenia gracilis</i>
Medium	<i>Acmadenia rupicola</i>
Medium	<i>Euchaetis albertiniana</i>
Medium	<i>Muraltia knysnaensis</i>
Medium	Sensitive species 980
Medium	Sensitive species 516
Medium	<i>Psoralea trullata</i>
Medium	Sensitive species 1171
Medium	Sensitive species 800
Medium	<i>Erica setulosa</i>
Medium	Sensitive species 500
Medium	<i>Pachites bodkinii</i>
Medium	<i>Acrolophia lunata</i>
Medium	Sensitive species 763
Medium	<i>Pterygodium cleistogamum</i>
Medium	<i>Diosma passerinoides</i>
Medium	<i>Agathosma microcarpa</i>

## MAP OF RELATIVE TERRESTRIAL BIODIVERSITY THEME SENSITIVITY



Very High sensitivity	High sensitivity	Medium sensitivity	Low sensitivity
X			

### Sensitivity Features:

Sensitivity	Feature(s)
Very High	ESA 2: Restore from other land use
Very High	ESA 2: Restore from plantation or high density IAP
Very High	ESA 1
Very High	CBA 2: Forest
Very High	CBA 2: Terrestrial
Very High	CBA 1: Forest
Very High	CBA 1: Terrestrial
Very High	Indigenous Forest (VegMap_2018)_Southern Afrotemperate Forest
Very High	SWSA (SW)_Outeniqua
Very High	EN_Cape Lowland Alluvial Vegetation
Very High	CR_Garden Route Granite Fynbos
Very High	EN_Garden Route Shale Fynbos

**SCREENING REPORT FOR AN ENVIRONMENTAL AUTHORIZATION AS  
REQUIRED BY THE 2014 EIA REGULATIONS – PROPOSED SITE  
ENVIRONMENTAL SENSITIVITY**

**EIA Reference number:**

**Project name:** Eskom Narina Substation EIA

**Project title:** Eskom Narina Substation EIA

**Date screening report generated:** 08/02/2024 14:22:28

**Applicant:** Eskom Holdings

**Compiler:** EIMS

**Compiler signature:**



.....

**Application Category:** Utilities Infrastructure | Electricity | Distribution and  
Transmission | Substation



# Table of Contents

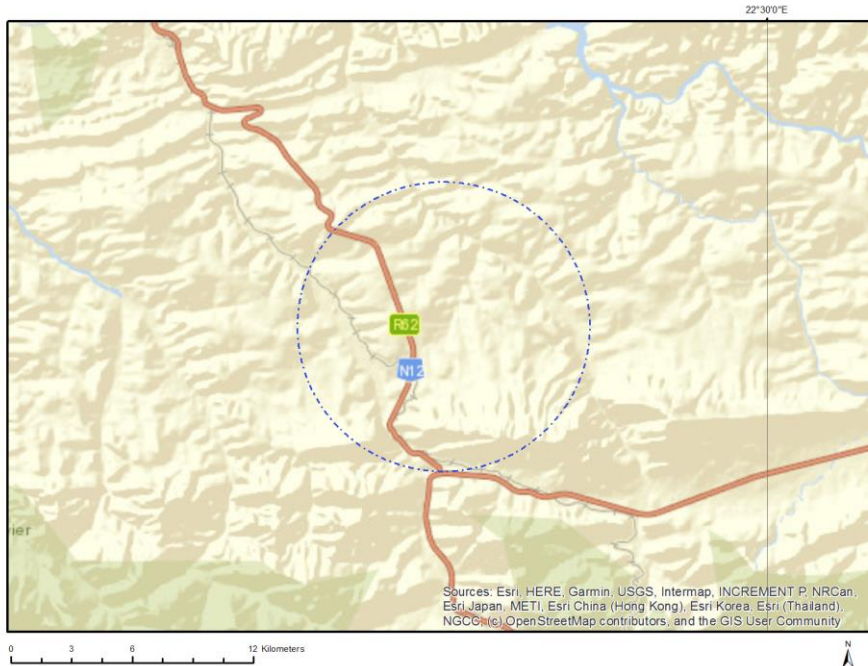
- Proposed Project Location ..... 3
  - Orientation map 1: General location ..... 3
- Map of proposed site and relevant area(s) ..... 4
  - Cadastral details of the proposed site ..... 4
  - Wind and Solar developments with an approved Environmental Authorisation or applications under consideration within 30 km of the proposed area ..... 7
  - Environmental Management Frameworks relevant to the application ..... 7
- Environmental screening results and assessment outcomes ..... 8
  - Relevant development incentives, restrictions, exclusions or prohibitions ..... 8
  - Proposed Development Area Environmental Sensitivity ..... 8
  - Specialist assessments identified ..... 8
- Results of the environmental sensitivity of the proposed area ..... 10
  - MAP OF RELATIVE AGRICULTURE THEME SENSITIVITY ..... 10
  - MAP OF RELATIVE ANIMAL SPECIES THEME SENSITIVITY ..... 11
  - MAP OF RELATIVE AQUATIC BIODIVERSITY THEME SENSITIVITY ..... 12
  - MAP OF RELATIVE ARCHAEOLOGICAL AND CULTURAL HERITAGE THEME SENSITIVITY ..... 13
  - MAP OF RELATIVE CIVIL AVIATION THEME SENSITIVITY ..... 14
  - MAP OF RELATIVE DEFENCE THEME SENSITIVITY ..... 15
  - MAP OF RELATIVE PALEONTOLOGY THEME SENSITIVITY ..... 16
  - MAP OF RELATIVE PLANT SPECIES THEME SENSITIVITY ..... 17
  - MAP OF RELATIVE TERRESTRIAL BIODIVERSITY THEME SENSITIVITY ..... 18

# Proposed Project Location

Orientation map 1: General location



## Map of proposed site and relevant area(s)



## Cadastral details of the proposed site

Property details:

No	Farm Name	Farm/ Erf No	Portion	Latitude	Longitude	Property Type
1	MISGUND	25	0	33°46'34.54S	22°18'26.37E	Farm
2	ANNEX ZOUT KLOOF	28	0	33°46'24.76S	22°22'43.77E	Farm
3	ZOUT KLOOF	27	0	33°45'27.93S	22°21'8.43E	Farm
4	ANNEX ZOUT KLOOF	28	0	33°44'27.76S	22°22'13.09E	Farm
5	MISTKRAAL	169	0	33°42'1.35S	22°19'37.5E	Farm
6	PAARDE POORT	78	0	33°47'46.96S	22°23'13.02E	Farm
7	ANNEX SOLDAATS KRAAL	79	0	33°48'38S	22°23'32.83E	Farm
8	ANNEX MEST KRAAL	20	0	33°42'0.68S	22°21'53.68E	Farm
9	KLEYNS HOOGTE	19	0	33°43'9.97S	22°22'24.17E	Farm
10	PALMIET DRIFT	80	0	33°48'47.77S	22°21'31.12E	Farm
11	DOORNRIVIER	383	0	33°45'31.65S	22°22'37.7E	Farm
12	ANNEX WELBEDACHT	21	0	33°43'38.58S	22°18'39.32E	Farm
13	KLIPPEDRIF	81	0	33°47'18.37S	22°19'53.54E	Farm
14	FONTEINS KLOOF	82	0	33°46'49.51S	22°17'0.18E	Farm
15	DOORN RIVIER	29	0	33°45'4.78S	22°23'42.46E	Farm
16		304	0	33°45'47.49S	22°28'18.01E	Farm
17	WELBEDAG	24	0	33°45'32.64S	22°18'29.76E	Farm
18	BROOKSNEK	26	0	33°44'9.2S	22°19'16.78E	Farm
19	RIETVALLEY	76	0	33°48'12.01S	22°25'49.27E	Farm
20	ZOUT KLOOF	27	0	33°44'8.74S	22°19'1.99E	Farm
21		372	0	33°44'43.03S	22°24'25.27E	Farm
22	DOORN RIVIER	29	0	33°46'42.9S	22°24'52.76E	Farm
23	ANNEX MEIDE KRAAL	18	0	33°43'22.65S	22°24'11.27E	Farm
24	DOORNBERG OUTSPAN	32	0	33°47'8.42S	22°24'51.7E	Farm

25		30	0	33°44'32.47S	22°26'44.43E	Farm
26	SOLDAATS KRAAL	97	0	33°49'30.22S	22°23'18.22E	Farm
27	OUDE WERF	353	0	33°44'57.38S	22°28'1.16E	Farm
28	KLIPPEDRIF	81	21	33°47'8.27S	22°18'10.43E	Farm Portion
29	KLIPPEDRIF	81	29	33°46'31.24S	22°18'41.1E	Farm Portion
30	KLEYNES HOOGTE	19	2	33°43'54.99S	22°22'1.74E	Farm Portion
31	ANNEX WELBEDACHT	21	0	33°44'51.09S	22°17'31.59E	Farm Portion
32	ANNEX WELBEDACHT	21	3	33°44'25.26S	22°18'3.13E	Farm Portion
33	SOLDAATS KRAAL	97	0	33°49'10.65S	22°23'35.2E	Farm Portion
34	KLIPPEDRIF	81	11	33°47'21.59S	22°21'3.32E	Farm Portion
35	WELBEDAG	24	19	33°46'15.85S	22°18'45.31E	Farm Portion
36	KLIPPEDRIF	81	30	33°46'51.03S	22°18'21.45E	Farm Portion
37	KLIPPEDRIF	81	8	33°46'31.28S	22°20'40.19E	Farm Portion
38	KLIPPEDRIF	81	15	33°48'9.54S	22°20'3.72E	Farm Portion
39	DOORN RIVIER	29	6	33°46'31.98S	22°23'15.76E	Farm Portion
40		30	3	33°45'11.98S	22°25'1.52E	Farm Portion
41	KLIPPEDRIF	81	20	33°45'39.14S	22°20'0.04E	Farm Portion
42	KLIPPEDRIF	81	23	33°47'4.04S	22°17'57.03E	Farm Portion
43	ANNEX WELBEDACHT	21	1	33°44'41.47S	22°17'49.82E	Farm Portion
44	KLIPPEDRIF	81	0	33°46'9.35S	22°19'54.8E	Farm Portion
45	KLIPPEDRIF	81	9	33°46'40.09S	22°18'59.46E	Farm Portion
46	WELBEDAG	24	0	33°46'53.97S	22°17'53.36E	Farm Portion
47	WELBEDAG	24	20	33°46'4.08S	22°19'7.21E	Farm Portion
48	KLIPPEDRIF	81	7	33°48'49.67S	22°19'57.72E	Farm Portion
49	KLIPPEDRIF	81	11	33°47'17.03S	22°20'13.01E	Farm Portion
50	RIETVALLEY	76	0	33°47'56.93S	22°25'33.05E	Farm Portion
51	ANNEX WELBEDACHT	21	7	33°44'26.35S	22°17'59.32E	Farm Portion
52	ANNEX WELBEDACHT	21	8	33°43'34.6S	22°19'35.5E	Farm Portion
53	WELBEDAG	24	14	33°45'48.12S	22°17'42.5E	Farm Portion
54	WELBEDAG	24	17	33°45'50.66S	22°18'23.52E	Farm Portion
55	WELBEDAG	24	18	33°45'41.34S	22°19'15.35E	Farm Portion
56	WELBEDAG	24	0	33°46'11.45S	22°18'31.45E	Farm Portion
57	WELBEDAG	24	1	33°45'48.5S	22°17'29.85E	Farm Portion
58	ZOUT KLOOF	27	1	33°46'32.3S	22°22'0.64E	Farm Portion
59	WELBEDAG	24	12	33°45'11.52S	22°18'13.57E	Farm Portion
60	WELBEDAG	24	15	33°44'56.91S	22°19'2.74E	Farm Portion
61	WELBEDAG	24	26	33°46'24.57S	22°18'31.22E	Farm Portion
62	ZOUT KLOOF	27	19	33°44'39.94S	22°20'16.15E	Farm Portion
63	ZOUT KLOOF	27	18	33°44'8.54S	22°19'51.25E	Farm Portion
64	ZOUT KLOOF	27	20	33°44'51.53S	22°20'51.6E	Farm Portion
65	ANNEX ZOUT KLOOF	28	3	33°44'37.68S	22°22'22.1E	Farm Portion
66	ANNEX ZOUT KLOOF	28	4	33°46'20.76S	22°22'40.18E	Farm Portion
67	WELBEDAG	24	11	33°45'33.73S	22°17'39.27E	Farm Portion
68	WELBEDAG	24	13	33°45'16.93S	22°17'50.27E	Farm Portion
69	ZOUT KLOOF	27	7	33°44'23.29S	22°19'31.2E	Farm Portion
70	ANNEX WELBEDACHT	21	2	33°43'42S	22°20'8.77E	Farm Portion
71	ANNEX WELBEDACHT	21	6	33°43'46.52S	22°20'40.67E	Farm Portion
72	WELBEDAG	24	5	33°45'4.5S	22°18'20.23E	Farm Portion
73	WELBEDAG	24	8	33°46'3.31S	22°17'49.58E	Farm Portion
74	WELBEDAG	24	16	33°45'28.37S	22°18'9.21E	Farm Portion
75	KLIPPEDRIF	81	0	33°46'29.92S	22°18'51.56E	Farm Portion
76	ANNEX MEIDE KRAAL	18	0	33°43'49.29S	22°24'1.03E	Farm Portion
77	ANNEX MEIDE KRAAL	18	4	33°43'15.48S	22°23'56.95E	Farm Portion

78	DOORNBERG OUTSPAN	32	0	33°47'8.42S	22°24'51.7E	Farm Portion
79	PALMIET DRIFT	80	4	33°48'42.05S	22°22'2.98E	Farm Portion
80	KLIPPEDRIF	81	14	33°46'59.57S	22°20'39.84E	Farm Portion
81	WELBEDAG	24	4	33°45'47.31S	22°18'55.79E	Farm Portion
82	KLIPPEDRIF	81	2	33°46'37.98S	22°19'21.85E	Farm Portion
83	WELBEDAG	24	6	33°46'52.25S	22°17'36.04E	Farm Portion
84	KLIPPEDRIF	81	33	33°47'16.31S	22°19'0.28E	Farm Portion
85	ANNEX ZOUT KLOOF	28	0	33°43'59.66S	22°22'19.28E	Farm Portion
86	KLIPPEDRIF	81	6	33°46'24.98S	22°18'45.1E	Farm Portion
87	PALMIET DRIFT	80	1	33°49'6.66S	22°22'1.65E	Farm Portion
88	WELBEDAG	24	1	33°45'4.83S	22°17'42.56E	Farm Portion
89	MISGUND	25	0	33°46'34.54S	22°18'26.37E	Farm Portion
90	KLIPPEDRIF	81	12	33°47'54.04S	22°19'54.62E	Farm Portion
91	DOORN RIVIER	29	0	33°46'42.43S	22°25'0.64E	Farm Portion
92	KLIPPEDRIF	81	12	33°48'7.44S	22°20'35.88E	Farm Portion
93	KLIPPEDRIF	81	32	33°46'53.91S	22°19'7.11E	Farm Portion
94	KLEYN HOOGTE	19	1	33°43'42.31S	22°21'29.2E	Farm Portion
95	ANNEX WELBEDACHT	21	5	33°44'24.67S	22°18'6.06E	Farm Portion
96	PALMIET DRIFT	80	8	33°48'58.62S	22°21'54.46E	Farm Portion
97	PALMIET DRIFT	80	10	33°48'47.61S	22°21'9.76E	Farm Portion
98	KLIPPEDRIF	81	1	33°45'28.17S	22°20'4.73E	Farm Portion
99	KLIPPEDRIF	81	40	33°47'33.44S	22°21'43.54E	Farm Portion
100	WELBEDAG	24	7	33°45'10.67S	22°19'12.17E	Farm Portion
101	ANNEX ZOUT KLOOF	28	0	33°44'11.56S	22°22'57.37E	Farm Portion
102	WELBEDAG	24	1	33°45'21.26S	22°19'43.25E	Farm Portion
103	PALMIET DRIFT	80	3	33°49'2.77S	22°20'20.02E	Farm Portion
104	KLIPPEDRIF	81	17	33°46'24.91S	22°18'41.9E	Farm Portion
105	KLIPPEDRIF	81	19	33°47'29.22S	22°20'33.42E	Farm Portion
106	ANNEX MEST KRAAL	20	1	33°42'42.15S	22°21'15.92E	Farm Portion
107	KLIPPEDRIF	81	41	33°46'51.9S	22°19'4.29E	Farm Portion
108	PALMIET DRIFT	80	0	33°49'19.5S	22°21'49.52E	Farm Portion
109	WELBEDAG	24	21	33°46'38.84S	22°17'55.87E	Farm Portion
110	WELBEDAG	24	24	33°46'15.13S	22°18'41.27E	Farm Portion
111	ANNEX ZOUT KLOOF	28	0	33°43'59.59S	22°21'25.32E	Farm Portion
112	KLIPPEDRIF	81	40	33°46'55.8S	22°18'51.17E	Farm Portion
113	DOORN RIVIER	29	1	33°45'27.58S	22°23'48.51E	Farm Portion
114	PALMIET DRIFT	80	7	33°48'31.64S	22°21'31.4E	Farm Portion
115	KLIPPEDRIF	81	18	33°46'14.53S	22°19'17.25E	Farm Portion
116	ANNEX ZOUT KLOOF	28	2	33°44'14.79S	22°21'54.95E	Farm Portion
117	ANNEX MEST KRAAL	20	2	33°43'28.91S	22°20'59.31E	Farm Portion
118	PALMIET DRIFT	80	9	33°49'1.18S	22°22'2.05E	Farm Portion
119	WELBEDAG	24	9	33°44'51.09S	22°18'55.18E	Farm Portion
120	ZOUT KLOOF	27	0	33°44'19.86S	22°20'10.16E	Farm Portion
121	ANNEX SOLDAATS KRAAL	79	0	33°48'38S	22°23'32.83E	Farm Portion
122	WELBEDAG	24	23	33°46'30.18S	22°18'7.14E	Farm Portion
123	ZOUT KLOOF	27	9	33°44'8.74S	22°19'1.99E	Farm Portion
124	KLIPPEDRIF	81	13	33°46'46.36S	22°19'56.18E	Farm Portion
125	KLIPPEDRIF	81	22	33°45'55.93S	22°19'45.72E	Farm Portion
126	DOORN RIVIER	29	2	33°44'32.58S	22°23'43.87E	Farm Portion
127	KLEYN HOOGTE	19	0	33°43'7.07S	22°22'28.99E	Farm Portion
128		372	0	33°44'38.6S	22°24'28.57E	Farm Portion
129	MISTKRAAL	169	35	33°42'29.05S	22°19'58.24E	Farm Portion
130		372	1	33°44'45.51S	22°24'31.5E	Farm Portion
131	KLIPPEDRIF	81	44	33°46'27.85S	22°19'20.55E	Farm Portion
132	DOORN RIVIER	383	0	33°45'28.34S	22°22'37.07E	Farm Portion
133	BEWERAAS KLOOF	86	3	33°48'13.41S	22°18'20.59E	Farm Portion
134	PALMIET DRIFT	80	1	33°47'53.25S	22°22'8.01E	Farm Portion

135	KLIPPEDRIF	81	25	33°46'39.18S	22°18'22.06E	Farm Portion
136	PALMIET DRIFT	80	7	33°48'53.78S	22°20'57.33E	Farm Portion
137	OUDE WERF	353	0	33°45'12.04S	22°27'29.94E	Farm Portion
138	KLIPPEDRIF	81	45	33°47'27.89S	22°21'46.64E	Farm Portion
139		30	0	33°44'37.31S	22°26'23.01E	Farm Portion
140	KLIPPEDRIF	81	0	33°46'10.56S	22°19'54.82E	Farm Portion
141		30	0	33°44'31.19S	22°26'55.58E	Farm Portion
142	KLIPPEDRIF	81	8	33°46'45.19S	22°20'20.84E	Farm Portion
143	DOORN RIVIER	29	8	33°45'57.87S	22°23'26.6E	Farm Portion
144	BROOKSNEK	26	0	33°44'9.2S	22°19'16.78E	Farm Portion
145	ZOUT KLOOF	27	6	33°45'18.51S	22°21'6.66E	Farm Portion
146	ANNEX WELBEDACHT	21	0	33°43'32.47S	22°18'16.34E	Farm Portion
147	WELBEDAG	24	0	33°44'37.26S	22°18'38.98E	Farm Portion
148	WELBEDAG	24	22	33°46'16.33S	22°18'27.91E	Farm Portion
149	MISTKRAAL	169	12	33°42'42.31S	22°19'59.99E	Farm Portion
150	ZOUT KLOOF	27	2	33°45'54.34S	22°21'13.91E	Farm Portion
151	KLIPPEDRIF	81	43	33°47'53.93S	22°19'21.71E	Farm Portion
152	KLIPPEDRIF	81	24	33°46'29.73S	22°18'33.79E	Farm Portion
153	PAARDE POORT	78	0	33°47'46.96S	22°23'13.02E	Farm Portion
154	KLIPPEDRIF	81	4	33°46'37.11S	22°19'21.89E	Farm Portion
155	ANNEX MEST KRAAL	20	0	33°42'13.87S	22°21'33.1E	Farm Portion
156		30	5	33°46'1.34S	22°23'58.54E	Farm Portion
157	PALMIET DRIFT	80	2	33°49'26.42S	22°21'22.34E	Farm Portion
158	KLIPPEDRIF	81	37	33°46'37.2S	22°19'49.13E	Farm Portion
159		304	0	33°46'4.63S	22°28'43.68E	Farm Portion
160	MISTKRAAL	169	9	33°42'22.24S	22°20'34.15E	Farm Portion
161	ANNEX ZOUT KLOOF	28	1	33°45'21.3S	22°22'32.41E	Farm Portion
162	ZOUT KLOOF	27	21	33°45'52.75S	22°21'22.34E	Farm Portion
163	KLIPPEDRIF	81	45	33°46'49.7S	22°19'38.12E	Farm Portion
164	KLIPPEDRIF	81	0	33°46'28.58S	22°18'51.5E	Farm Portion
165	DOORN RIVIER	29	1	33°45'18.64S	22°24'2.29E	Farm Portion

Development footprint<sup>1</sup> vertices:  
No development footprint(s) specified.

## Wind and Solar developments with an approved Environmental Authorisation or applications under consideration within 30 km of the proposed area

No	EIA Reference No	Classification	Status of application	Distance from proposed area (km)
1	14/12/16/3/3/1/1292	Solar PV	Approved	24.7
2	14/12/16/3/3/2/471	Solar PV	Approved	19.9
3	14/12/16/3/3/1/1292/AM1	Solar PV	Approved	24.7

## Environmental Management Frameworks relevant to the application

<sup>1</sup> "development footprint", means the area within the site on which the development will take place and includes all ancillary developments for example roads, power lines, boundary walls, paving etc. which require vegetation clearance or which will be disturbed and for which the application has been submitted.

No intersections with EMF areas found.

## Environmental screening results and assessment outcomes

The following sections contain a summary of any development incentives, restrictions, exclusions or prohibitions that apply to the proposed development site as well as the most environmental sensitive features on the site based on the site sensitivity screening results for the application classification that was selected. The application classification selected for this report is:

**Utilities Infrastructure | Electricity | Distribution and Transmission | Substation.**

### Relevant development incentives, restrictions, exclusions or prohibitions

The following development incentives, restrictions, exclusions or prohibitions and their implications that apply to this site are indicated below.

Incentive, restriction or prohibition	Implication
Strategic Gas Pipeline Corridors-Phase 2: Mossel Bay to Coega	<a href="https://screening.environment.gov.za/ScreeningDownloads/DevelopmentZones/Combined_GAS.pdf">https://screening.environment.gov.za/ScreeningDownloads/DevelopmentZones/Combined_GAS.pdf</a>
South African Conservation Areas	<a href="https://screening.environment.gov.za/ScreeningDownloads/DevelopmentZones/SACAD_OR_2023_Q3_Metadata.pdf">https://screening.environment.gov.za/ScreeningDownloads/DevelopmentZones/SACAD_OR_2023_Q3_Metadata.pdf</a>
Main Electricity Distribution Substation	<a href="https://screening.environment.gov.za/ScreeningDownloads/DevelopmentZones/Distribution_Transmission.pdf">https://screening.environment.gov.za/ScreeningDownloads/DevelopmentZones/Distribution_Transmission.pdf</a>
South African Protected Areas	<a href="https://screening.environment.gov.za/ScreeningDownloads/DevelopmentZones/SAPAD_OR_2023_Q3_Metadata.pdf">https://screening.environment.gov.za/ScreeningDownloads/DevelopmentZones/SAPAD_OR_2023_Q3_Metadata.pdf</a>

### Proposed Development Area Environmental Sensitivity

The following summary of the development site environmental sensitivities is identified. Only the highest environmental sensitivity is indicated. The footprint environmental sensitivities for the proposed development footprint as identified, are indicative only and must be verified on site by a suitably qualified person before the specialist assessments identified below can be confirmed.

Theme	Very High sensitivity	High sensitivity	Medium sensitivity	Low sensitivity
Agriculture Theme	X			
Animal Species Theme		X		
Aquatic Biodiversity Theme	X			
Archaeological and Cultural Heritage Theme	X			
Civil Aviation Theme			X	
Defence Theme				X
Paleontology Theme	X			
Plant Species Theme		X		
Terrestrial Biodiversity Theme	X			

### Specialist assessments identified

Based on the selected classification, and the known impacts associated with the proposed development, the following list of specialist assessments have been identified for inclusion in the

assessment report. It is the responsibility of the EAP to confirm this list and to motivate in the assessment report, the reason for not including any of the identified specialist study including the provision of photographic evidence of the site situation.

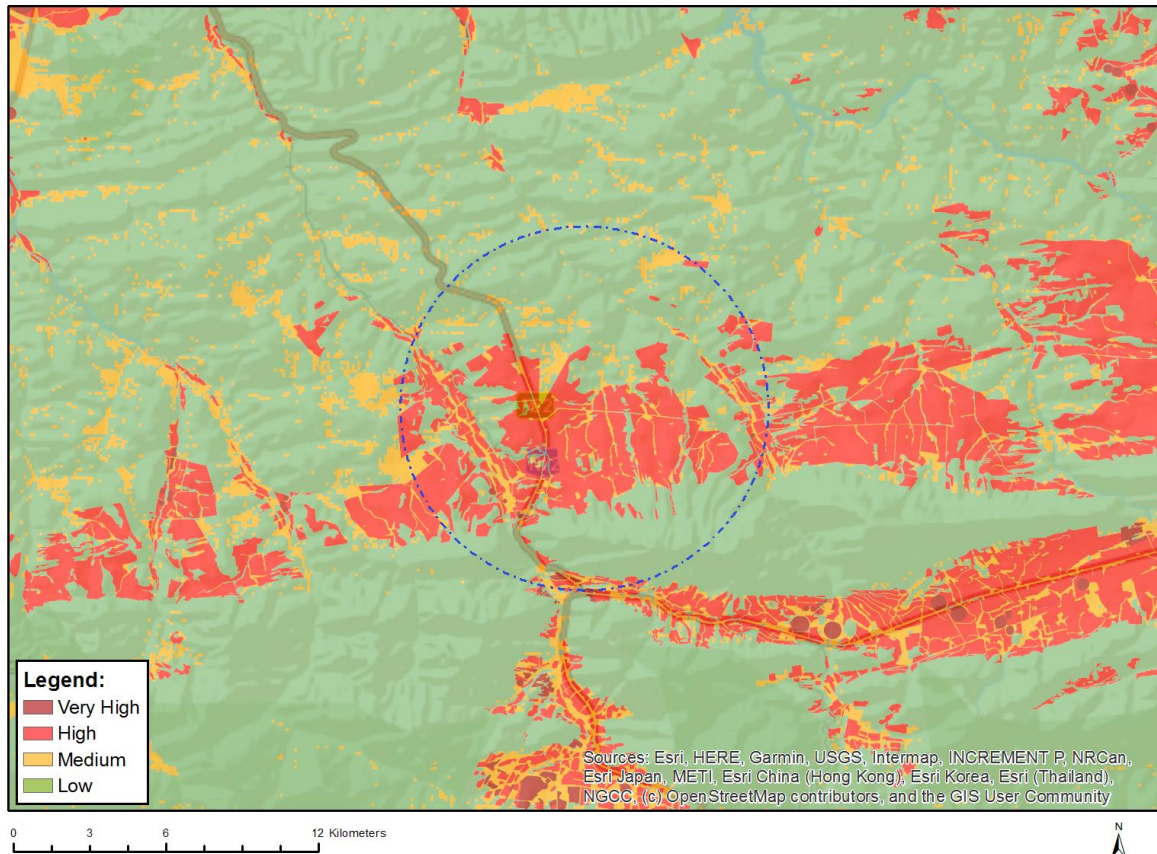
No	Specialist assessment	Assessment Protocol
1	Agricultural Impact Assessment	<a href="https://screening.environment.gov.za/ScreeningDownloads/AssessmentProtocols/Gazetted_General_Agriculture_Assessment_Protocols.pdf">https://screening.environment.gov.za/ScreeningDownloads/AssessmentProtocols/Gazetted_General_Agriculture_Assessment_Protocols.pdf</a>
2	Archaeological and Cultural Heritage Impact Assessment	<a href="https://screening.environment.gov.za/ScreeningDownloads/AssessmentProtocols/Gazetted_General_Requirement_Assessment_Protocols.pdf">https://screening.environment.gov.za/ScreeningDownloads/AssessmentProtocols/Gazetted_General_Requirement_Assessment_Protocols.pdf</a>
3	Palaeontology Impact Assessment	<a href="https://screening.environment.gov.za/ScreeningDownloads/AssessmentProtocols/Gazetted_General_Requirement_Assessment_Protocols.pdf">https://screening.environment.gov.za/ScreeningDownloads/AssessmentProtocols/Gazetted_General_Requirement_Assessment_Protocols.pdf</a>
4	Terrestrial Biodiversity Impact Assessment	<a href="https://screening.environment.gov.za/ScreeningDownloads/AssessmentProtocols/Gazetted_Terrestrial_Biodiversity_Assessment_Protocols.pdf">https://screening.environment.gov.za/ScreeningDownloads/AssessmentProtocols/Gazetted_Terrestrial_Biodiversity_Assessment_Protocols.pdf</a>
5	Aquatic Biodiversity Impact Assessment	<a href="https://screening.environment.gov.za/ScreeningDownloads/AssessmentProtocols/Gazetted_Aquatic_Biodiversity_Assessment_Protocols.pdf">https://screening.environment.gov.za/ScreeningDownloads/AssessmentProtocols/Gazetted_Aquatic_Biodiversity_Assessment_Protocols.pdf</a>
6	Geotechnical Assessment	<a href="https://screening.environment.gov.za/ScreeningDownloads/AssessmentProtocols/Gazetted_General_Requirement_Assessment_Protocols.pdf">https://screening.environment.gov.za/ScreeningDownloads/AssessmentProtocols/Gazetted_General_Requirement_Assessment_Protocols.pdf</a>
7	Plant Species Assessment	<a href="https://screening.environment.gov.za/ScreeningDownloads/AssessmentProtocols/Gazetted_Plant_Species_Assessment_Protocols.pdf">https://screening.environment.gov.za/ScreeningDownloads/AssessmentProtocols/Gazetted_Plant_Species_Assessment_Protocols.pdf</a>
8	Animal Species Assessment	<a href="https://screening.environment.gov.za/ScreeningDownloads/AssessmentProtocols/Gazetted_Animal_Species_Assessment_Protocols.pdf">https://screening.environment.gov.za/ScreeningDownloads/AssessmentProtocols/Gazetted_Animal_Species_Assessment_Protocols.pdf</a>



## Results of the environmental sensitivity of the proposed area.

The following section represents the results of the screening for environmental sensitivity of the proposed site for relevant environmental themes associated with the project classification. It is the duty of the EAP to ensure that the environmental themes provided by the screening tool are comprehensive and complete for the project. Refer to the disclaimer.

### MAP OF RELATIVE AGRICULTURE THEME SENSITIVITY



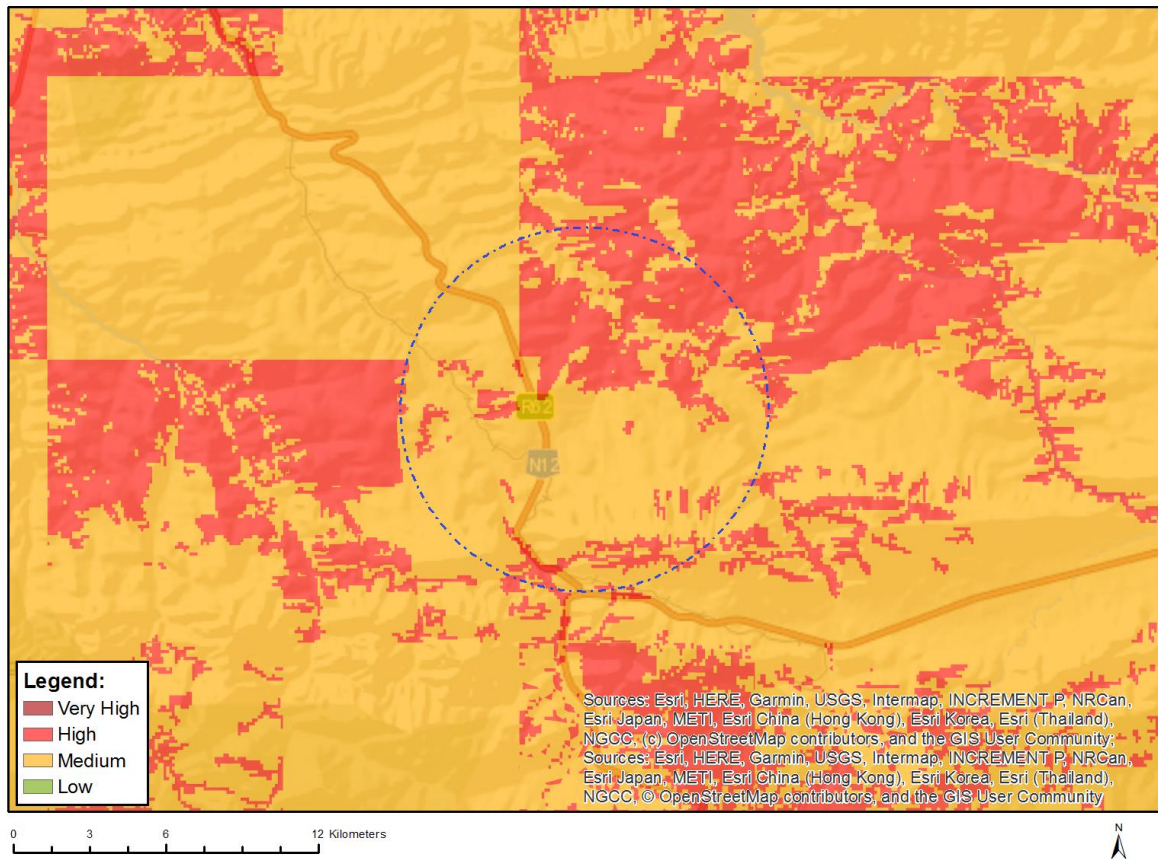
Very High sensitivity	High sensitivity	Medium sensitivity	Low sensitivity
X			

#### Sensitivity Features:

Sensitivity	Feature(s)
High	Land capability;09. Moderate-High/10. Moderate-High
High	Annual Crop Cultivation / Planted Pastures Rotation;Land capability;01. Very low/02. Very low/03. Low-Very low/04. Low-Very low/05. Low
High	Annual Crop Cultivation / Planted Pastures Rotation;Land capability;06. Low-Moderate/07. Low-Moderate/08. Moderate
High	Old Fields;Land capability;06. Low-Moderate/07. Low-Moderate/08. Moderate
High	Old Fields;Land capability;01. Very low/02. Very low/03. Low-Very low/04. Low-Very low/05. Low
High	Annual Crop Cultivation / Planted Pastures Rotation;Land capability;09. Moderate-High/10. Moderate-High
Low	Land capability;01. Very low/02. Very low/03. Low-Very low/04. Low-Very low/05. Low

Medium	Land capability;06. Low-Moderate/07. Low-Moderate/08. Moderate
Very High	Horticulture;Land capability;06. Low-Moderate/07. Low-Moderate/08. Moderate
Very High	Horticulture;Land capability;01. Very low/02. Very low/03. Low-Very low/04. Low-Very low/05. Low
Very High	Viticulture;Land capability;06. Low-Moderate/07. Low-Moderate/08. Moderate
Very High	Viticulture;Land capability;01. Very low/02. Very low/03. Low-Very low/04. Low-Very low/05. Low

## MAP OF RELATIVE ANIMAL SPECIES THEME SENSITIVITY



Where only a sensitive plant unique number or sensitive animal unique number is provided in the screening report and an assessment is required, the environmental assessment practitioner (EAP) or specialist is required to email SANBI at [ejadatarequests@sanbi.org.za](mailto:ejadatarequests@sanbi.org.za) listing all sensitive species with their unique identifiers for which information is required. The name has been withheld as the species may be prone to illegal harvesting and must be protected. SANBI will release the actual species name after the details of the EAP or specialist have been documented.

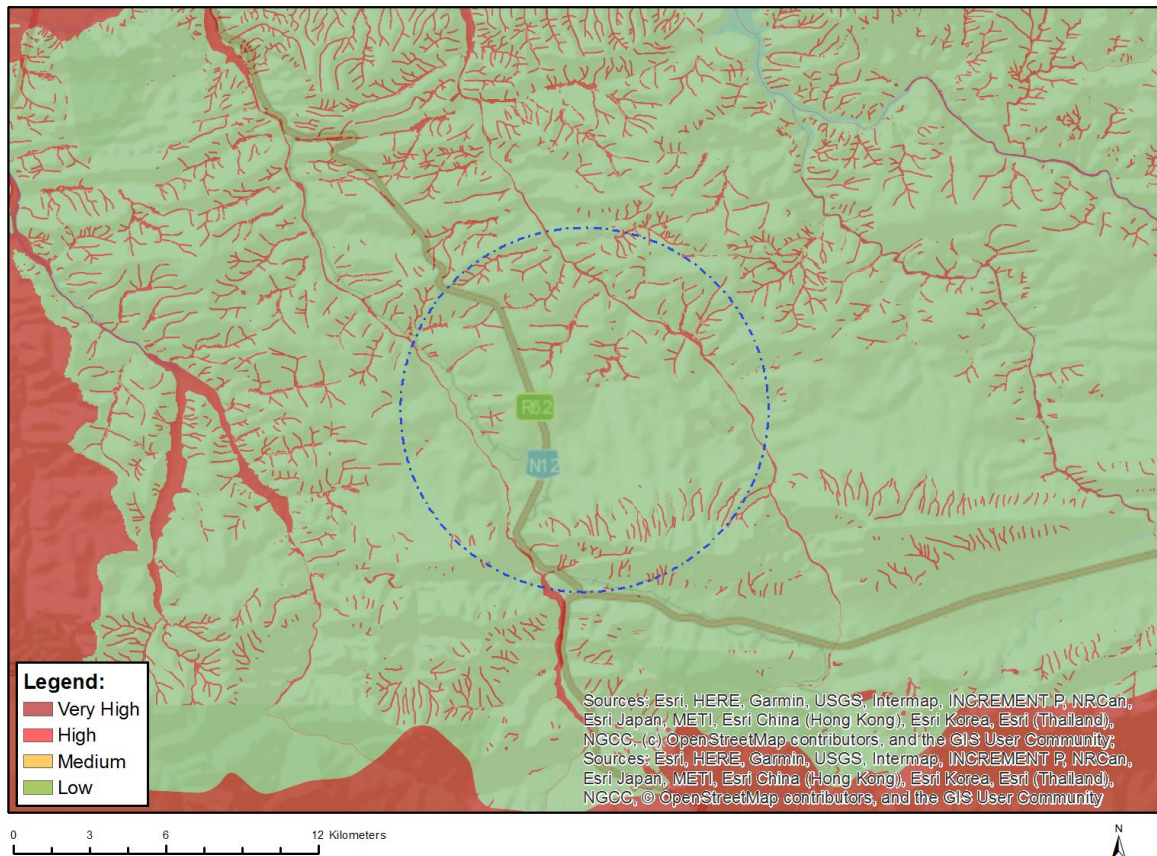
Very High sensitivity	High sensitivity	Medium sensitivity	Low sensitivity
	X		

### Sensitivity Features:

Sensitivity	Feature(s)
High	Aves-Circus maurus
High	Aves-Neotis denhami
High	Aves-Polemaetus bellicosus
High	Aves-Falco biarmicus
High	Aves-Afrotis afra
Medium	Aves-Sarothrura affinis
Medium	Aves-Circus maurus

Medium	Aves-Neotis denhami
Medium	Aves-Bradypterus sylvaticus
Medium	Aves-Afrotis afra
Medium	Insecta-Tsitana dicksoni
Medium	Mammalia-Bunolagus monticularis
Medium	Sensitive species 8
Medium	Invertebrate-Aneuryphymus montanus

## MAP OF RELATIVE AQUATIC BIODIVERSITY THEME SENSITIVITY

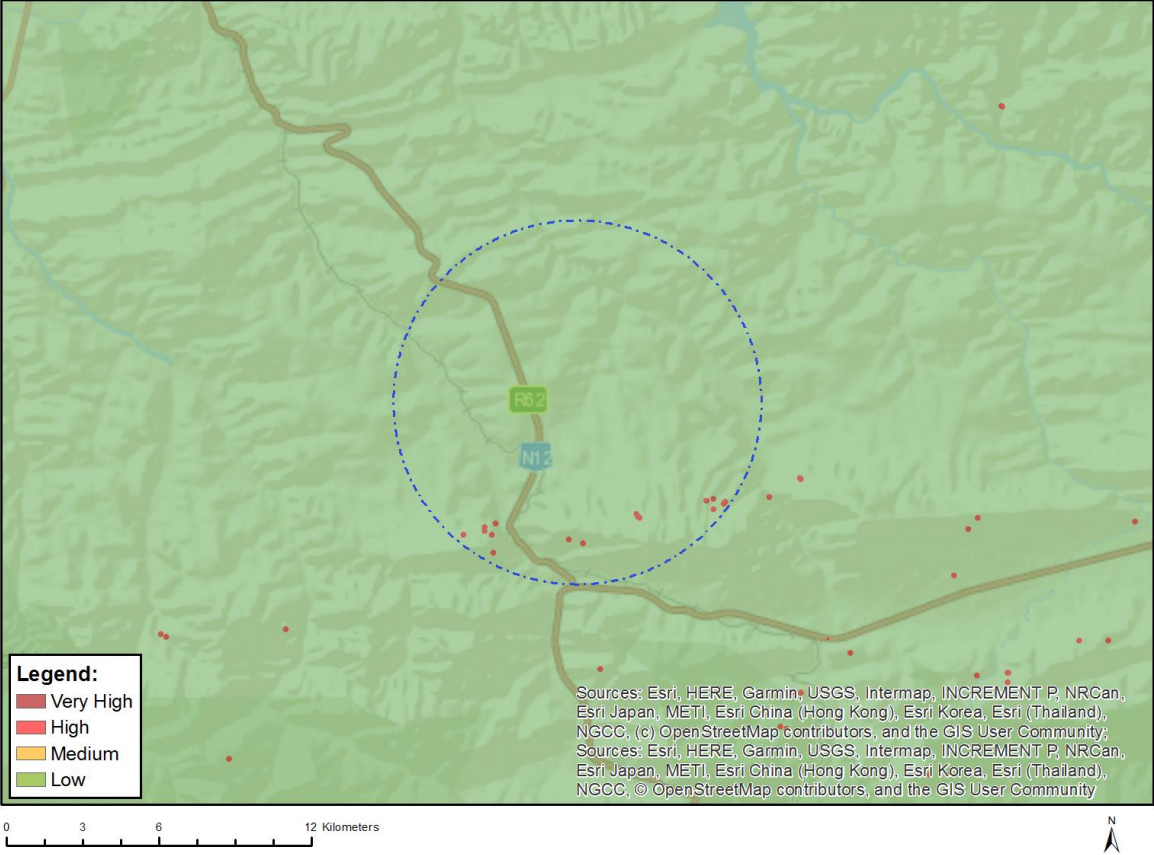


Very High sensitivity	High sensitivity	Medium sensitivity	Low sensitivity
X			

### Sensitivity Features:

Sensitivity	Feature(s)
Low	Low sensitivity
Very High	CBA 1: Aquatic
Very High	ESA 1: Aquatic
Very High	Rivers_Z
Very High	Wetlands_(River)
Very High	Wetlands_Eastern Fynbos-Renosterveld Bioregion (Floodplain)
Very High	Wetlands_Rainshadow Valley Karoo Bioregion (Depression)
Very High	Wetlands_Rainshadow Valley Karoo Bioregion (Seep)

# MAP OF RELATIVE ARCHAEOLOGICAL AND CULTURAL HERITAGE THEME SENSITIVITY

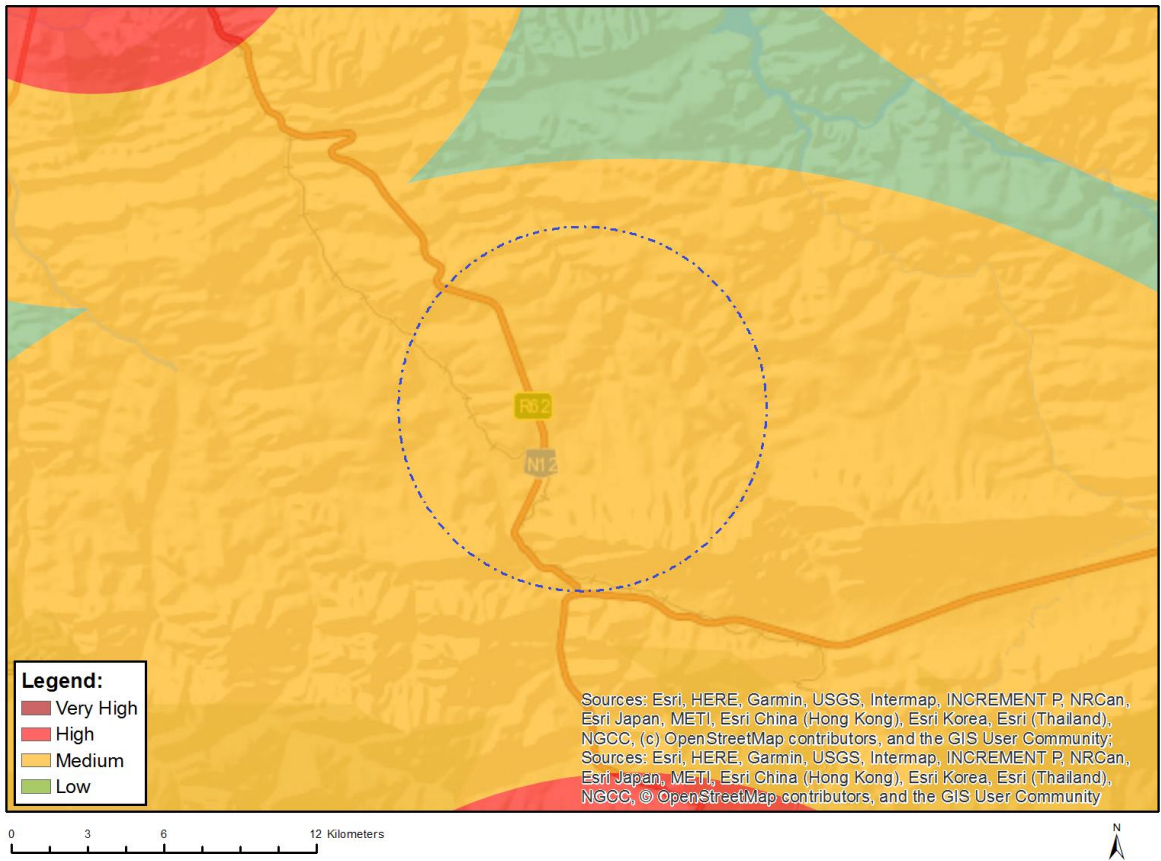


Very High sensitivity	High sensitivity	Medium sensitivity	Low sensitivity
X			

**Sensitivity Features:**

Sensitivity	Feature(s)
Low	Low sensitivity
Very High	Within 100m of an Ungraded Heritage site

## MAP OF RELATIVE CIVIL AVIATION THEME SENSITIVITY

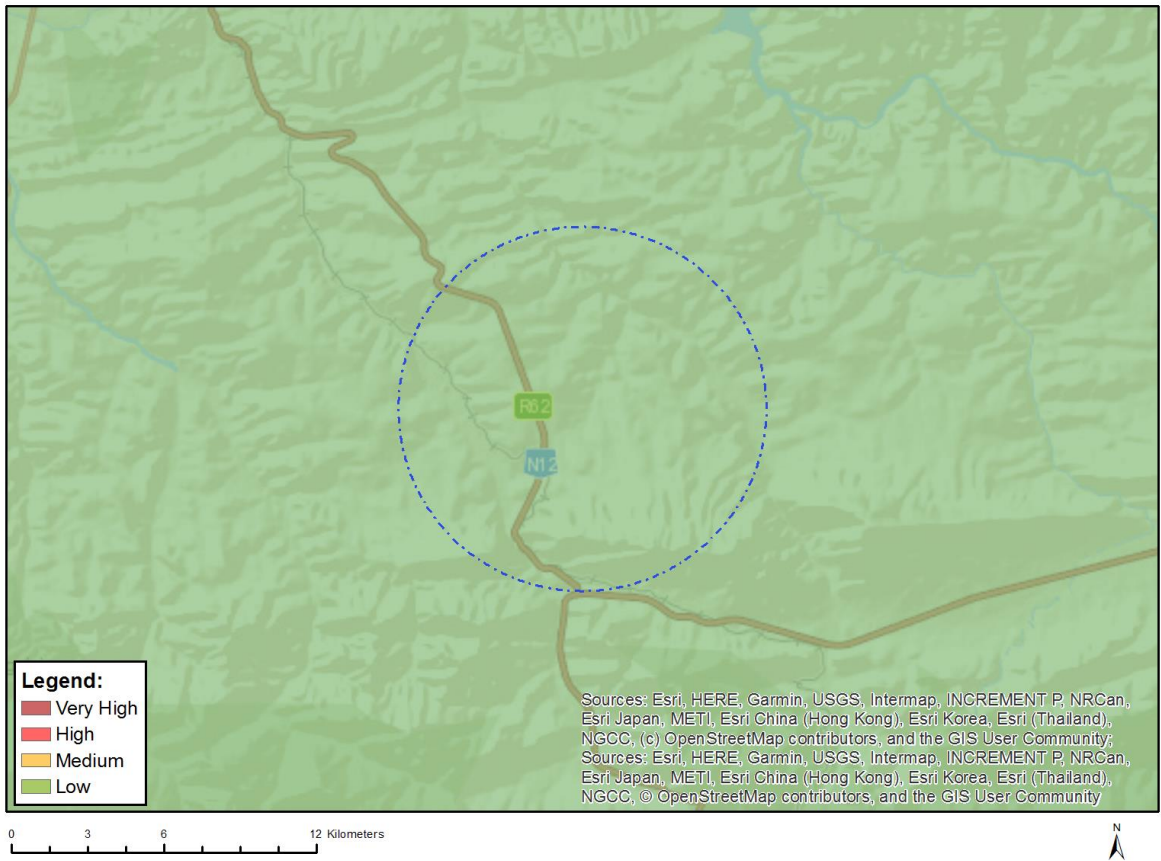


Very High sensitivity	High sensitivity	Medium sensitivity	Low sensitivity
		X	

### Sensitivity Features:

Sensitivity	Feature(s)
Medium	Between 15 and 35 km from a civil aviation radar
Medium	Between 15 and 35 km from a major civil aviation aerodrome

# MAP OF RELATIVE DEFENCE THEME SENSITIVITY

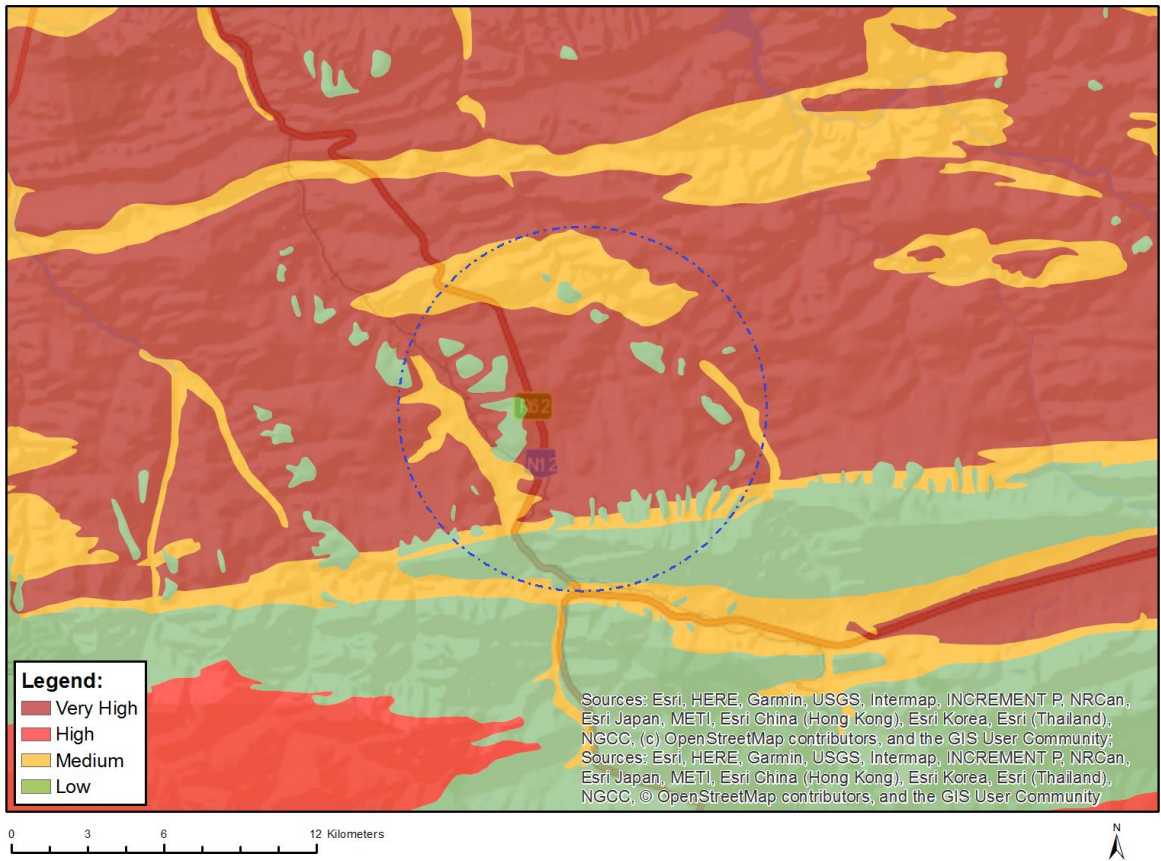


Very High sensitivity	High sensitivity	Medium sensitivity	Low sensitivity
			X

## Sensitivity Features:

Sensitivity	Feature(s)
Low	Low Sensitivity

## MAP OF RELATIVE PALEONTOLOGY THEME SENSITIVITY

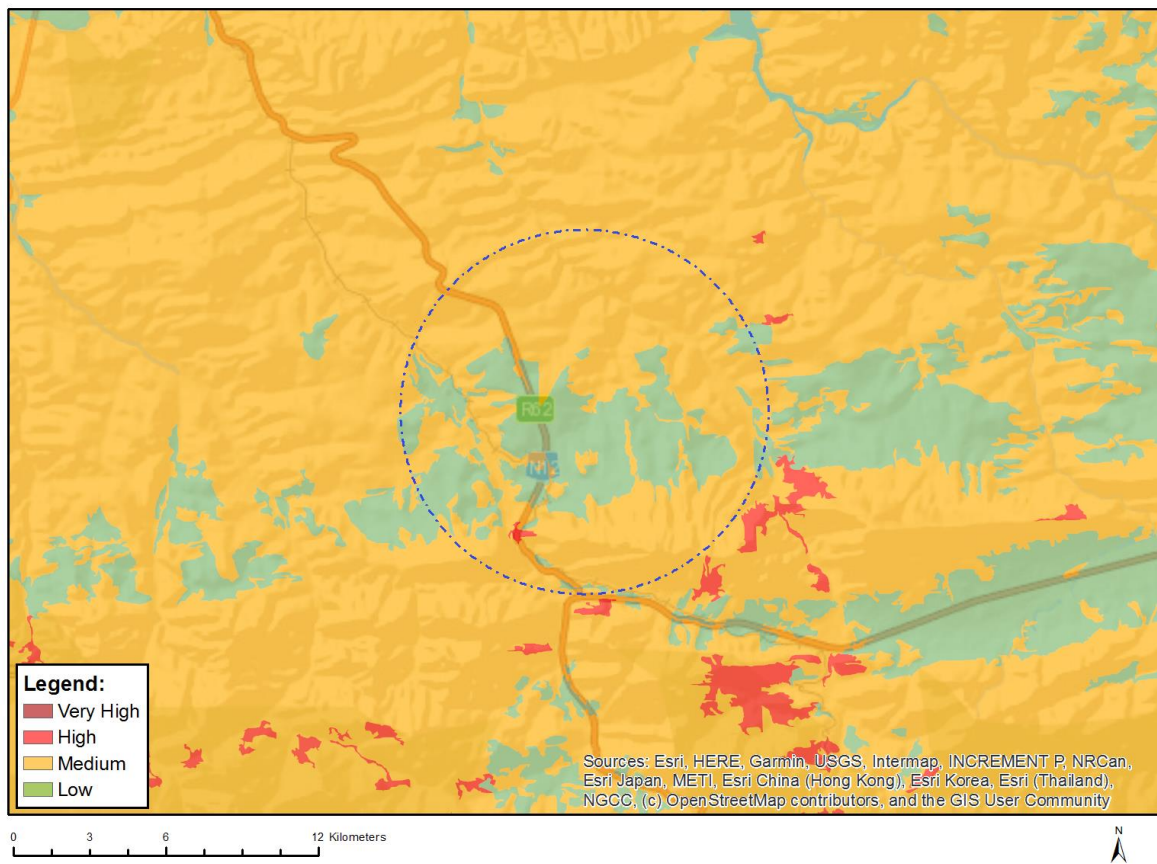


Very High sensitivity	High sensitivity	Medium sensitivity	Low sensitivity
X			

### Sensitivity Features:

Sensitivity	Feature(s)
Low	Features with a Low paleontological sensitivity
Medium	Features with a Medium paleontological sensitivity
Very High	Features with a Very High paleontological sensitivity

## MAP OF RELATIVE PLANT SPECIES THEME SENSITIVITY



Where only a sensitive plant unique number or sensitive animal unique number is provided in the screening report and an assessment is required, the environmental assessment practitioner (EAP) or specialist is required to email SANBI at [eiadatarequests@sanbi.org.za](mailto:eiadatarequests@sanbi.org.za) listing all sensitive species with their unique identifiers for which information is required. The name has been withheld as the species may be prone to illegal harvesting and must be protected. SANBI will release the actual species name after the details of the EAP or specialist have been documented.

Very High sensitivity	High sensitivity	Medium sensitivity	Low sensitivity
	X		

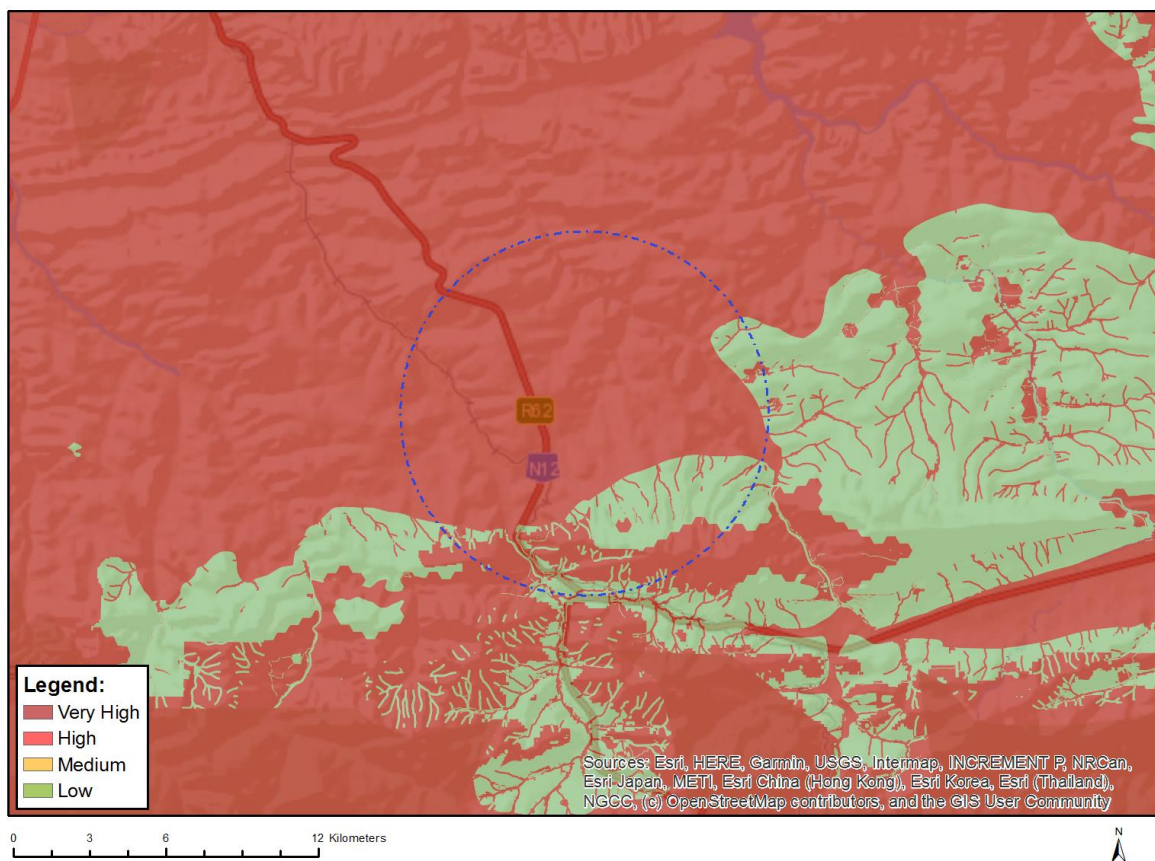
### Sensitivity Features:

Sensitivity	Feature(s)
High	Aspalathus pedunculata
Low	Low Sensitivity
Medium	Glottiphyllum linguiforme
Medium	Argyrobium rarum
Medium	Psoralea diturnerae
Medium	Aspalathus bowieana
Medium	Aspalathus glabrescens
Medium	Aspalathus pedunculata
Medium	Otholobium racemosum
Medium	Rafnia vlokii
Medium	Lotononis elongata
Medium	Lotononis filiformis
Medium	Leucadendron olens



Medium	Mimetes chrysanthus
Medium	Harveya roseoalba
Medium	Manulea derustiana
Medium	Selago ferruginea
Medium	Sensitive species 1081
Medium	Oxalis fourcadei
Medium	Erica zebrensis
Medium	Erica zwartbergensis
Medium	Erica vlokii
Medium	Sensitive species 111
Medium	Sensitive species 25
Medium	Sensitive species 820
Medium	Sensitive species 873
Medium	Agathosma rehmanniana
Medium	Acmadenia gracilis
Medium	Aristea nana
Medium	Sensitive species 54
Medium	Romulea jugicola
Medium	Romulea vlokii
Medium	Erica inamoena
Medium	Sensitive species 142
Medium	Sensitive species 728
Medium	Acrolophia lunata
Medium	Sensitive species 763
Medium	Pterygodium cleistogamum
Medium	Diosma passerinoides
Medium	Sensitive species 187

## MAP OF RELATIVE TERRESTRIAL BIODIVERSITY THEME SENSITIVITY



Very High sensitivity	High sensitivity	Medium sensitivity	Low sensitivity
X			

**Sensitivity Features:**

Sensitivity	Feature(s)
Low	Low Sensitivity
Very High	Witkliprug Nature Reserve
Very High	ESA 2: Restore from other land use
Very High	ESA 1
Very High	CBA 2: Terrestrial
Very High	CBA 1: Terrestrial
Very High	EN_Eastern Little Karoo

OFFICIAL

APPLICANT:



PREPARED BY:



## Environmental Site Sensitivity and Verification Report

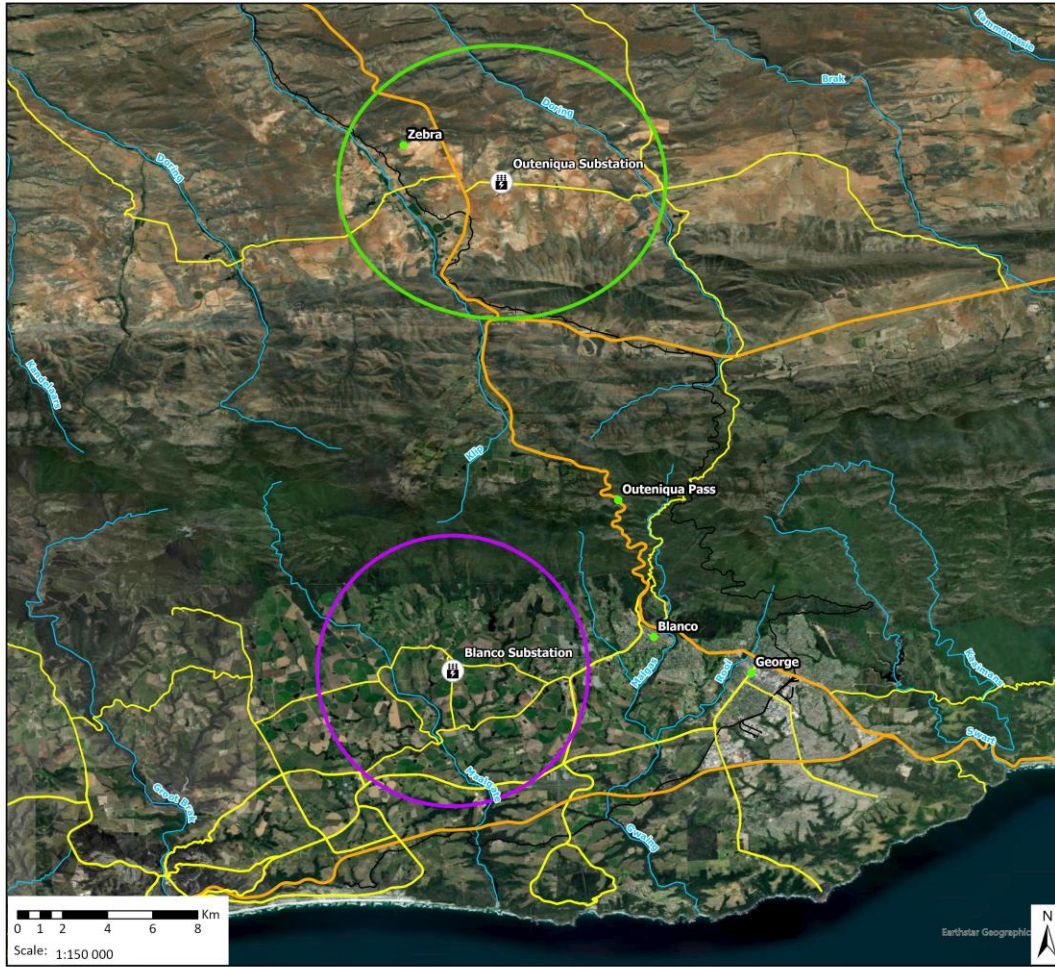
Site ID:	Blanco Strengthening: Substation	Network Narina	Consultant	Environmental Impact Management Services (Pty) Ltd (EIMS)
Location:	Blanco and Outeniqua areas, Western Cape Province		EAP	Sikhumbuzo Mahlangu
Client representative:	Rudzani Ranwedzi		Inspection Date:	08 June 2022 & 27 September 2023

### 1. Background

Background of the project:	Eskom wishes to construction and operation of a new 400/132kV Narina main transmission substation (MTS) with associated loop-in loop-out powerlines close to the load centre (Blanco area near George Town). The required area size for substation location is 600m x 600m (~36ha) to account for current and future needs/plans. The length of the turn-in lines (loop-in loop-out on the Droerivier Proteus 400kV line and the Blanco-Outeniqua 132kV lines) will be determined by the approved substation location. The proposed project is located on various farm portions within the Garden Route District Municipality, Western Cape Province.		
Project Aspects:	Details (provide specifications)	Location (DD MM SS)	
		Latitude	Longitude
❖ Substation	A new 400/132kV Narina main transmission substation (MTS) with associated loop-in loop-out powerlines close to the load centre (Blanco area near George Town) is proposed. The surface infrastructure for the proposed Narina substation is 600 x 600 m or ~36ha to account for current and future needs/plans. The substation will contain 2 x 500MVA 400/132kV transformations from the new 400kV busbar to the existing Blanco 132kV substation.	Preferred site to be determined during the EIA phase.	Preferred site to be determined during the EIA phase.
❖ Transmission Powerlines (LILO)	New 400kV transmission loop-in loop-out powerlines will be constructed to connect the proposed substation to the existing Droerivier-Proteus 400kV powerline corridor. The length of the turn-in lines can be about 2.2 km; however, the final distance will be determined by the substation location. The type of tower structure likely to be utilised for the 400kV Loop-in Loop-out power lines are the 518 tower series utilised on a numerous Eskom transmission lines.	Location and length will be determined by the approved substation location.	Location and length will be determined by the approved substation location.
❖ Distribution Powerlines	A 132kV distribution powerline from the proposed Narina substation to the existing Blanco substation will be constructed. It is proposed, depending on the final location of the Narina substation that the new 132kV powerlines follow the existing corridors to the Blanco substation. The type of tower structure likely to be utilised for the 132kV powerline is likely a double circuit monopole structure.	Location and length will be determined by the approved substation location.	Location and length will be determined by the approved substation location.



## 2. Site Layout Plan



**Locality Map**  
1495 Eskom Blanco Network Strengthening Project

**Legend**

- Existing Substation
- POI
- Blanco Study Area
- Outeniqua Study Area
- National Route
- Main Road
- Railway
- NFEPA Rivers

Esri, TomTom, Garmin, FAO, NOAA, USGS, Sources: Esri, USGS, Esri, CGIAR

**Data Sources:**  
CSG; ESRI; SANBI  
Coord System: GCS WGS 1984  
Datum: WGS 1984  
Units: Degree  
Ref: 1495\_Eskom Blanco Locality

Date: 2024/01/19  
EIMS Ref: 1495  
Compiled: QM  
Reviewed: SK  
Approved: LW



### 2. DEA Screening Tool Assessment (Blanco study area)

Aspect	Very High	High	Medium	Low
Agriculture Theme	X			
Animal Species Theme		X		
Aquatic Biodiversity Theme	X			
Archaeological and Cultural Heritage Theme	X			
Civil Aviation Theme	X			
Defence Theme				X
Palaeontology Theme		X		
Plant Species Theme			X	
Terrestrial Biodiversity Theme	X			

### DEA Screening Tool Assessment (Outeniqua study area)

Aspect	Very High	High	Medium	Low
Agriculture Theme	X			
Animal Species Theme		X		
Aquatic Biodiversity Theme	X			
Archaeological and Cultural Heritage Theme	X			
Civil Aviation Theme			X	
Defence Theme				X
Palaeontology Theme	X			



<b>Plant Species Theme</b>		X		
<b>Terrestrial Biodiversity Theme</b>	X			

### 3. Site Assessment

#### 3.1 Gradient (indicate the general gradient characteristics of site)

Aspect									
Study area	<input type="checkbox"/>	<input checked="" type="checkbox"/>	<input checked="" type="checkbox"/>	<input checked="" type="checkbox"/>	<input checked="" type="checkbox"/>	<input checked="" type="checkbox"/>	<input checked="" type="checkbox"/>	<input checked="" type="checkbox"/>	<input checked="" type="checkbox"/>

#### Is the site located on or in the immediate vicinity of any of the following:

	Yes	No	Comment
Erosion Channels or areas of severe erosion/ destabilized soils	<input type="checkbox"/>	<input checked="" type="checkbox"/>	Extensive agricultural lands occur within the study area.
Wetlands (within 32m)	<input checked="" type="checkbox"/>	<input type="checkbox"/>	Wetlands and rivers may be crossed by powerlines.
Unstable slopes or geological features (rocky outcrops)	<input checked="" type="checkbox"/>	<input type="checkbox"/>	Mountain range occurs to the north of the Blanco study area.
Bare areas	<input checked="" type="checkbox"/>	<input type="checkbox"/>	Some bare areas in the form of agricultural lands occur within the study areas.
Other Sensitive or risk areas?	<input checked="" type="checkbox"/>	<input type="checkbox"/>	Existing roads, substation, powerlines, farmhouses, centre pivots and other irrigated lands occur within the study area.
Are any existing servitudes and structures directly or indirectly affected by the proposed sites and routes (e.g. Eskom, public road servitudes and restrictions- 60 m from National Road, farmer's water/irrigation supplies, etc.)?	Yes <input checked="" type="checkbox"/>	No <input type="checkbox"/>	Existing substation, powerlines, national and regional roads, farmhouses, and centre pivots occur within the study areas. The George airport occurs to the south of the Blanco study area.

#### 3.2 Vegetation

Which of the listed descriptions best describes the general groundcover on and around the site?

Natural veld - good condition <input type="checkbox"/>	Natural veld with scattered aliens <input checked="" type="checkbox"/>	Natural veld with heavy alien infestation <input type="checkbox"/>	Veld dominated by alien species <input type="checkbox"/>	Gardens <input checked="" type="checkbox"/>
Sport field <input type="checkbox"/>	Cultivated land <input checked="" type="checkbox"/>	Paved surface <input checked="" type="checkbox"/>	Building or other structure <input checked="" type="checkbox"/>	Bare soil <input checked="" type="checkbox"/>
Comments on vegetation composition:	The study area and proposed project infrastructure covers a significantly large area and as such the proposed project infrastructure will impact on different vegetation units (mostly cultivated land).			



Comments on weed species/type	Minimal weed species noted on site, mostly limited to plantation and farmhouses.
-------------------------------	--

**Land cover/ use description: Describe the land uses on the site**

<b>Blanco Network Strengthening: Narina Substation infrastructure</b>	The study areas contain various land uses with agriculture / cultivation being the predominant use. The existing Blanco and Outeniqua substations are located at the centre of the respective study areas, farmsteads, B&Bs, roads, powerlines, wedding venues, tourist attractions etc.
---	--

**4. General Comments and Recommendations**

The proposed development includes infrastructure which covers over 30ha as well as linear development in the form of powerlines and therefore may likely impact on the bio-physical and socio-economic environment. A detailed impact assessment will therefore be undertaken which will be informed by various specialist studies as well as a public consultation process.



Site Photos

**Blanco Alternative 1: 08/06/2022; GPS Coordinates: 33°57'12.96"S 22°20'12.49"E**



**Blanco Alternative 2: 08/06/2022; GPS Coordinates: 33°57'30.06"S 22°20'7.40"E**



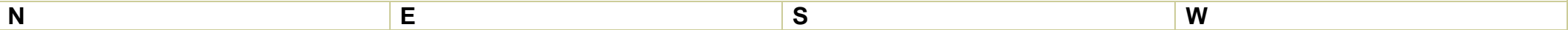
**Blanco Alternative 7, 8 & 9: 08/06/2022; GPS Coordinates: 33°58'3.69"S 22°17'19.56"E**



**Outeniqua Alternative 1, 4, 5 &10: 27/09/2023; GPS Coordinates: 33°45'53.28"S 22°20'50.23"E**



**Outeniqua Alternative 2: 27/09/2023; GPS Coordinates: 33°46'24.04"S 22°20'34.71"E**









## 7. Verification findings and motivation:

Assessment for specialist studies and motivation:					
Screening Tool Specialist Study Required:	Level of Sensitivity:	Suggested Sensitivity:	Required Assessment	level of	Motivation
<b>Agriculture Theme</b>	Very High	Very High	None.	<input type="checkbox"/>	A full DFFE protocol compliant specialist Agricultural Impact Assessment will be undertaken. In addition, a Socio-Economic Impact Assessment will be undertaken.
			Compliance Statement	<input type="checkbox"/>	
			Full Assessment	<input checked="" type="checkbox"/>	
			Other	<input type="checkbox"/>	
<b>Animal Species Theme</b>	High	High	None.	<input type="checkbox"/>	A full DFFE protocol compliant specialist Terrestrial Biodiversity Impact Assessment will be undertaken which will include impact on sensitive or protected faunal species in the area.
			Compliance Statement	<input type="checkbox"/>	
			Full Assessment	<input checked="" type="checkbox"/>	
			Other	<input type="checkbox"/>	
<b>Aquatic Biodiversity Theme</b>	Very High	Very High	None.	<input type="checkbox"/>	A full DFFE protocol compliant specialist Aquatic and Wetland Impact Assessment will be undertaken.
			Compliance Statement	<input type="checkbox"/>	
			Full Assessment	<input checked="" type="checkbox"/>	
			Other	<input type="checkbox"/>	
<b>Archaeological and Cultural Heritage Theme</b>	Very High	Very High	None.	<input type="checkbox"/>	A full DFFE protocol compliant specialist Heritage Impact Assessment will be undertaken.
			Compliance Statement	<input type="checkbox"/>	
			Full Assessment	<input checked="" type="checkbox"/>	
			Other	<input type="checkbox"/>	
<b>Civil Aviation Theme</b>	Very High	Low	None.	<input checked="" type="checkbox"/>	The nature of the development (substation and powerline development) as well as the maximum height of the development components during both construction and operational phases will not pose a material risk to George airport commercial air traffic. As such, no specialist aviation studies will be undertaken.
			Compliance Statement	<input type="checkbox"/>	
			Full Assessment	<input type="checkbox"/>	
			Other	<input type="checkbox"/>	
<b>Defence Theme</b>	Low	Low	None.	<input checked="" type="checkbox"/>	The defence theme was rated as low and therefore no defence related studies will be undertaken.
			Compliance Statement	<input type="checkbox"/>	
			Full Assessment	<input type="checkbox"/>	
			Other	<input type="checkbox"/>	
<b>Palaeontology Theme</b>	Very High	Very High	None.	<input type="checkbox"/>	A full DFFE protocol compliant specialist Palaeontological Impact Assessment will be undertaken for the Outeniqua study area.
			Compliance Statement	<input type="checkbox"/>	
			Full Assessment	<input checked="" type="checkbox"/>	
			Other	<input type="checkbox"/>	



<b>Plant Species Theme</b>	High	Medium	None.	<input type="checkbox"/>	A full DFFE protocol compliant specialist Terrestrial Biodiversity Impact Assessment will be undertaken which will include impact on sensitive or protected floral species in the area.
			Compliance Statement	<input type="checkbox"/>	
			Full Assessment	<input checked="" type="checkbox"/>	
			Other	<input type="checkbox"/>	
<b>Terrestrial Biodiversity Theme</b>	Very High	Very High	None.	<input type="checkbox"/>	A full DFFE protocol compliant specialist Terrestrial Biodiversity Impact Assessment will be undertaken.
			Compliance Statement	<input type="checkbox"/>	
			Full Assessment	<input checked="" type="checkbox"/>	
			Other	<input type="checkbox"/>	