

IF YOU
LOOK
INTO
MY EYES
AT DUSK,
YOU WILL
SEE THAT
I AM LOST.

* NITZAN MINTZ, STREET POET

ELEM

YOUTH IN DISTRESS

IMPACT REPORT | 2022

A FEW OPENING WORDS

ELEM'S VISION

ELEM - YOUTH IN DISTRESS SEEKS TO HELP VULNERABLE TEENS AND YOUNG ADULTS HANDLE THEIR SITUATIONS, OVERCOME RISKS AND GROW INTO CITIZENS WHO CONTRIBUTE TO THEMSELVES, TO THEIR COMMUNITIES AND TO ISRAEL.

This year we are marking ELEM's 40th year. Four decades of social activism on behalf of teens and young adults at risk in Israel – we have accomplished this with the help of hundreds of volunteers and staff who work with unending dedication and commitment, in winter, in summer, during tense days and stormy nights. We try to be there for them, to see them! With the goal of creating the most basic need between one person and another, connection.

For these teens, their meaningful, positive connection with an ELEM adult is sometimes their first unconditional relationship that does not require something in exchange. From this we aspire to assist them to enter a process of treatment and rehabilitation – and mainly to find their own internal strengths that will help them believe in themselves and their ability to escape the cycle of distress in which they find themselves.

We encounter teens and young adults with difficult and complex life situations, situations which they did not choose and in many cases were born into. They are alone, and on a slippery downward slope. Teens and young adults who suffer from neglect, some of whom come from dysfunctional homes. They suffer from severe distress such as violence, criminal activity, drug and alcohol use, sexual assault, suicidality and more. Our aspiration is to provide meaningful assistance for changing their life situations.

The core of ELEM's work is identifying needs, uncovering risk, developing innovative solutions, and providing services for teens and young adults at risk wherever they are, where they have no other solutions.

We see this task as a national mission, to identify and assist and to be a leading body in changing policy and changing the lives of at-risk youth whose voices are not heard. We work to reach decision makers, in legislative committees, at roundtables and forming coalitions of social organizations with the goal of creating force multipliers.

In 2022, ELEM served 12,309 teens and young adults at risk throughout the country. Our 260 staff and 1,110 volunteers located, met and assisted in more than 50 projects throughout the country – on the streets, in drop-in centers, on the internet, in shelters, in treatment centers and with personal mentoring. For these youth, ELEM staff and volunteers are a listening ear, support, help, liaisons – and they do not leave any young person behind.

In 2022, we continued our momentum. We deepened our work in locating youth on social media, we entered new online spaces such as TikTok, we expanded our work in the Arab community and in the ultra-Orthodox community, we created a strong foundation for the

program for young mothers at risk, we deepened our partnerships with local authorities and more.

This year we were also pleased to welcome a new CEO to ELEM, Tali Erez, who previously directed resource development for the organization, and a new COO, Danny Levit, who came to us from the Israeli Scouts Movement and was previously an ELEM volunteer.

"A society's resilience is measured by its treatment of its weakest members. A strong society preserves the chain and the unity of all, by strengthening the weak links."
Tchernichovsky's vision

Therefore, we place great importance on collaboration with the **business sector**, which is vital to our work and brings into focus the importance of mutual responsibility for creating a more equal society. We are grateful to the companies, the donors and all our partners for your giving and engagement over the years.

It is important to note the close and fruitful collaboration with **public bodies in Israel** that, together with the NGO sector, work on behalf of vulnerable populations in society, and **especially the collaboration with the Ministry of Welfare and Social Affairs**, a partnership that has deepened over the years. Likewise, we thank the local authorities throughout the country and other government ministries for their assistance and support.

Above all, we wish to thank and express our appreciation for the ELEM staff and volunteers, who are engaged wholeheartedly on behalf of youth, with love and dedication. Thank you for reaching out your hand and providing these young people with strength and hope for a better future!

In this Annual Report, submitted to Israel's President. Mr. Isaac Herzog, you will find significant phenomena and key trends in the lives of teens and young adults at risk in Israel, as well as ELEM's activities in 2022.

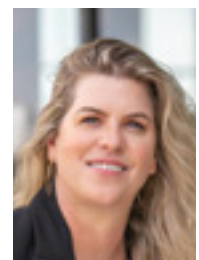
Yours in friendship,



Shlomo Yannai
Chair



Nava Barak
President



Tali Erez
CEO

2022 BY THE NUMBERS

12,309

**TEENS AND YOUNG ADULTS
RECEIVED ASSISTANCE FROM ELEM**

52 PROJECTS IN **42** LOCATIONS THROUGHOUT THE COUNTRY

54% BOYS, 44% GIRLS, 2% TRANSGENDER **260 EMPLOYEES** –

81% WOMEN, 19% MEN **1,100 VOLUNTEERS** NEW CEO **WE ASSISTED 4,276**

YOUNG ADULTS AGE 18-26 **WE ASSISTED 8,035 TEENS UNDER 18** **2,234 TEENS**

CAME TO 16 DROP-IN CENTERS **OUTREACH VANS IN 24 LOCATIONS MET 3,881 TEENS**

WE ASSISTED 686 TEENS AND YOUNG ADULTS IN 7 SHELTERS **WE COMMUNICATED WITH 3,700**

TEENS IN THE VIRTUAL SPACE **2,400 ELEM CHAT CONVERSATIONS** **2,200 IDENTIFICATIONS OF**

TEENS AT RISK ONLINE **WE MET 319 TEENS IN THE ARAB COMMUNITY** **WE SERVED 800 TEENS FROM**

THE ULTRA-ORTHODOX COMMUNITY **WE PROVIDED SUPPORT TO 120 YOUNG MOTHERS AT RISK**

WE PROVIDED TREATMENT FOR 540 TEENS AND CHILDREN WHO EXPERIENCED SEXUAL VIOLENCE OR

COMMITTED SEXUAL VIOLENCE **WE ASSISTED 350 SEXUALLY-EXPLOITED TEENS AND YOUNG ADULTS**

WE HELPED 240 HOMELESS TEENS **OUR MOST VIRAL TIKTOK VIDEO HAD 621,700 VIEWS**

500 TEEN GIRLS ARE PART OF ELEM'S PRIVATE FACEBOOK GROUP **130 SCHOLARSHIPS**

WERE GIVEN TO YOUNG ADULTS **105 - THE INNOVATIVE HOTLINE PROJECT WE**

STARTED THIS YEAR **30 NEW BABIES IN THE ELEM FAMILY** **12 MARRIAGES**

THE NORTHERNMOST PROJECT: IN KIRYAT SHMONA **THE**

SOUTHERNMOST PROJECT: IN EILAT **GIVING 100% FOR**

TEENS AND YOUNG ADULTS IN DISTRESS

ABOUT ELEM

Israel is home to more than 800,000 teens between the ages of 12-18. One-quarter of them live in various situations of risk.

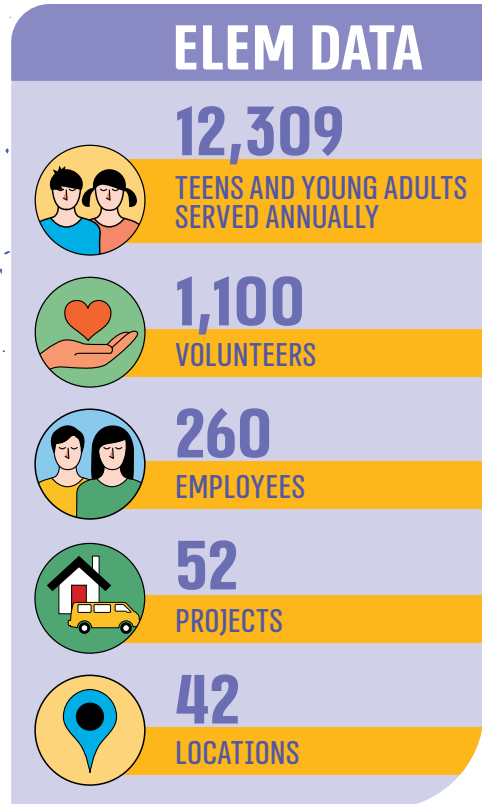
IN 2022, ELEM STAFF AND VOLUNTEERS MET 12,309 TEENS AND YOUNG ADULTS IN RISK SITUATIONS,

for whom ELEM serves as a real address, with the goal of helping them to improve and change their situations. We do this work out of a sense of social responsibility.

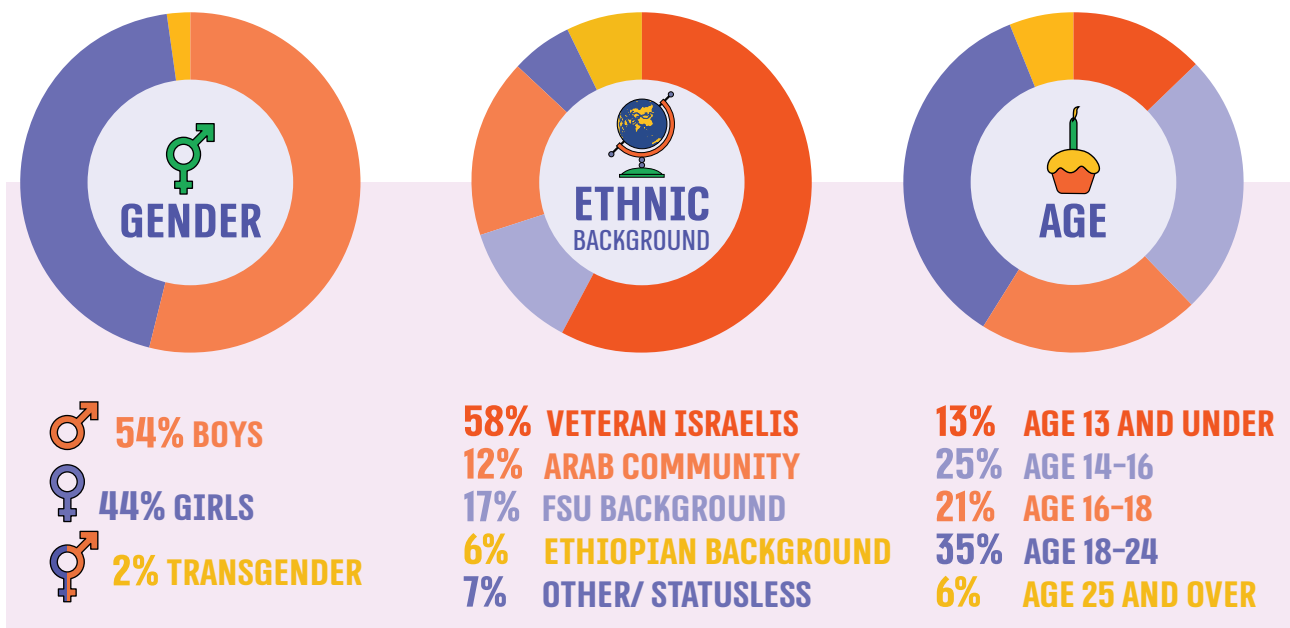
ELEM, which was established 40 years ago, is the leading organization in Israel for youth at risk. **ELEM operates 52 projects, spread throughout the country in 42 locations**, from Kiryat Shmona to Eilat, and offers a variety of responses for youth coping with a wide spectrum of distress: depression and anxiety; mental health crises; drug and alcohol use; violence; criminal activity; sexual assault; cyberbullying; eating disorders; suicidality; dropping out of school; involvement in the cycle of prostitution; homelessness and more.

ELEM staff and volunteers locate and meet with youth in the arenas where they are found: on social networks; on the street; in public parks; in schools; in discreet apartments or at parties; and create non-judgmental relationships, meeting them where they are, building trust, helping them to cope with their difficulties and distress and becoming a meaningful, stable anchor in their lives.

ELEM works in partnership with the Ministry of Welfare. Many of ELEM's projects work in cooperation with government ministries, local authorities and philanthropic organizations. ELEM also consults with the United Nations on the topic of youth at risk in Israel.



משרד הרווחה
והביטחון החברתי



*Percentages of total number of teens and young adults assisted by ELEM

ELEM AROUND THE COUNTRY

-  **ACRE**
-  **AFULA**
-  **ASHDOD**
-  **BAT YAM**
-  **BEER SHEVA**
-  **BEIT SHEMESH**
-  **BNEI BRAK**
-  **DEIR AL-ASAD**
-  **DIMONA**
-  **EAST JERUSALEM**
-  **EILAT**
-  **ELAD**
-  **HAIFA**
-  **HOF HACARMEL**
-  **HOLON**
-  **IKSAL**
-  **JERUSALEM**
-  **KAFR KANNA**
-  **KIRYAT GAT**
-  **KIRYAT YAM**
-  **KIRYAT MALACHI**
-  **KIRYAT SHMONA**
-  **LOD**
-  **MAJD AL-KRUM**
-  **MODI'IN AREA**
-  **NAZARETH**
-  **NATIONAL**
-  **NETANYA**
-  **NOF HAGALIL**
-  **OFAKIM**
-  **OR YEHUDA**
-  **PETACH TIKVA**
-  **RAANANA**
-  **RAMLA**
-  **ROSH HAAYIN**
-  **SAFED**
-  **SDEROT**
-  **SHEFARAM**
-  **TEL AVIV - YAFO**
-  **TIRAT HACARMEL**
-  **YEHUD**



DROP-IN CENTERS



STREET OUTREACH



ELEM DIGITAL



INDEPENDENT LIVING



EXTREME RISK



SEXUAL ABUSE



ARAB COMMUNITY



KEY PHENOMENA IN 2022

**"IF YOU LOOK INTO MY EYES AT DUSK
YOU WILL SEE THAT I AM LOST"**

Nitzan Mintz, Artist and Poet

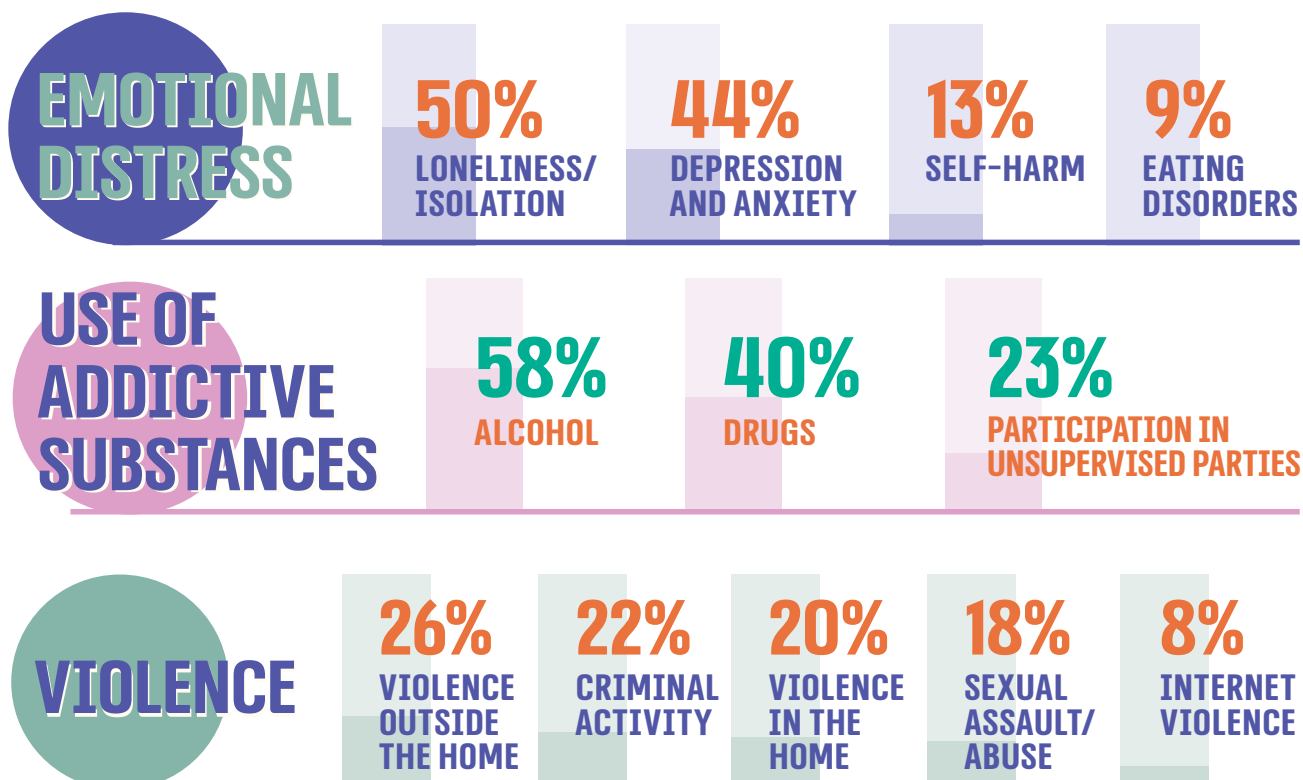
Youth in Israel in 2022 are lost. They are lively, they are active, they are happy, they smile in every selfie and story, but they are lonely. They represent an entire generation that is wandering, lost.

IN 2022, ELEM ASSISTED 12,309 TEENS AND YOUNG ADULTS THROUGHOUT THE COUNTRY. OUR HUNDREDS OF STAFF AND VOLUNTEERS, SPREAD OUT IN 52 PROJECTS AROUND THE COUNTRY, LOCATED TEENS AND YOUNG ADULTS, MADE CONNECTIONS WITH THEM, OFFERED A HAND, MET THEM ON THEIR OWN TURF, WERE A LISTENING EAR FOR THEM, GAVE COUNSEL AND SUPPORT, HELPED, MEDIATED – AND DID NOT LEAVE ANY YOUTH BEHIND.

ELEM staff and volunteers helped youth to cope with a wide spectrum of distress and risk situations – similar phenomena to those faced by youth in 2021, which present a troubling picture. Distress among youth that had worsened during the COVID-19 pandemic crisis has not diminished in strength, despite the fact that life seems to have gotten back on track quite some time ago. Life continues, but the risk situations remain elevated.

BELOW ARE THE KEY PHENOMENA THAT THE TEENS AND YOUNG ADULTS SERVED BY ELEM FACED IN 2022:

*The data presented here report the percentages of teens and young adults who reported each of the phenomena, out of the total population of and young adults served by ELEM.



THE SOUL KNOWS NO REST

This year, more than any other distress, teens and young adults reported a sense of loneliness and isolation. 50% of teens and young adults served by ELEM reported loneliness and the inability to form social connections, difficulty behaving in social situations, and in coping with relationships with one another. The youth are experiencing the products of progress and technology, of screens and social media: the lack of eye contact, lack of body language and expressions and lack of hearing one another; when these elements don't exist, there is an increase in the levels of loneliness, lack of belonging, alienation and social anxiety.

In addition, youth are experiencing the ripple effects of the COVID-19 pandemic. Although it is no longer part of our lives, youth have lost skills and basic abilities to communicate with one another – like many adults.

44% of the youth in ELEM reported that they faced anxiety and depression in 2022. Many shared a sense of despondency, detachment, disconnection and lack of motivation when they are at home, at school, in the neighborhood, in parks and on social networks. At our centers for young adults at extreme risk, the rate of depression and anxiety reached 70%. Depression and anxiety are based on their existential situation, for many of them as part of their coping with traumas from difficult, violent and painful childhoods. As part of coping with these phenomena, 19% of the youth served by ELEM shared that they receive clinical treatment – from psychologists, psychiatrists and other kinds of therapists.

On top of this, we encountered other challenges that are a result of these emotional distresses. This year, our teams reported self-harm among 13% teens and young adults served by ELEM – suicidal statements, self-harm and even suicide attempts. Our staff and volunteers make sure to be the seeing eyes and listening ears, the shoulder to rest their head on and the outstretched hand at the most difficult moments.

In another mental health category, eating disorders among teens and young adults served by ELEM were reported by 9% of respondents. Body image and aspirations for perfection are topics that have only worsened and deepened over the years, as youth spend more time on social media and screens, where everyone is beautiful, happy, and radiant. Eating disorders are prominently present among boys as well, with approximately one quarter (26%) of the reports of eating disorders coming from boys.

USE OF MIND-ALTERING SUBSTANCES

58% of youth reported use of alcohol and 40% reported drug use. Drugs and alcohol today are varied, cheap, available and easy to obtain. They were obtained through friends, acquaintances, neighbors, through social media or in WhatsApp and Telegram groups. Drugs and alcohol are more common among boys; close to 60% of the users are boys and young men.

Among the common drugs, many youths talked about nitrous oxide (whipped cream gas), whose use is becoming more and more widespread in recent years. It is an easily obtainable, cheap and convenient drug – but causes damage just like any other drug.

Teens and young adults served by ELEM used these mind-altering substances on the street, in their neighborhoods, in parks, in discreet apartments and at parties. 23% of teens and young adults served by ELEM reported that they participated in unsupervised parties during the year.

Our staff and volunteers at ELEM knew to locate these young people who used mind-altering substances, to explain the risks of these substances, to help them cope with attacks and anxiety in crises following use, and to mediate in case of need with entities that assist with treatment and/or recovery.

WORSENING VIOLENCE

The phenomenon of violence among youth has been getting worse in recent years.

26% of the teens and young adults served by ELEM in 2022 reported violence outside the home – on the street, in their neighborhoods, at school, at parties, in parks and more. We have encountered serious incidents of bullying and vandalism. Criminal activity was also at a high level this year, with 22% of the youth reporting involvement in criminal incidents.

Violence takes place not only on the street but also at home. During the year, 20% of the teens and young adults served by ELEM reported violence at home, some of which is ongoing and has been taking place for many years. The place that should be a supportive refuge for them is instead threatening and frightening.

Violence also exists on the “new street,” the place where youth hang out more and more – social media. 8% of teens and young adults served by ELEM suffered online violence, including ostracism, harassment, harmful content and sharing of photos and videos of a sexual nature. It is important to note that the definition of “online violence” is vague and we believe that in practice there is a lot more violence online than is reported.

18% of the teens and young adults served by ELEM reported that they have experienced sexual assault. Sometimes this is ongoing sexual abuse that they have experienced from a young age at home or in their close environment. Beneficiaries of ELEM's extreme risk division, most of whom have carried trauma for years and live in its shadow, 70% report that they have experienced sexual violence. Most of these are girls but this year we found that a quarter (23%) of reports came from boys and young men.

Our teams work hard to eradicate and deal with violence in all its forms. We identify the problem, build trust with youth, and over time assist them to cope with complex and difficult issues. Above all, we strive to give them a sense that they have a safe place and someone to trust and rely on.

All of these phenomena are survival strategies and the result of emotional distress that they feel and that they face. But their vulnerable spirits are not able to cope with everything alone. This is where ELEM enters the picture.

At ELEM, we continue to work on behalf of youth. To be there for them, to see them, to listen to them, to guide and mediate for them, to help them. We will not leave any youth behind.

DROP-IN CENTERS IN 2022

NATIONAL DIRECTORS: KEREN NAOR AND KHALIL HOMEIDI

THE DROP-IN CENTER DIVISION ASSISTS YOUTH IN COPING WITH A RANGE OF DISTRESS AND RISK SITUATIONS IN INFORMAL SOCIAL-EMOTIONAL SPACES THAT PROVIDE SUPPORT, ASSISTANCE AND GUIDANCE THROUGH CREATING HEALTHY CONNECTIONS WITH PEERS.

ELEM's 16 youth centers are spread out in different cities throughout the country and operate during the week, during afternoon and evening hours. They are characterized by informal and accessible help and support. The staff include professionals and volunteers from the community, who provide a range of responses, including personal and group counseling, support in times of crisis and mediation with other entities in the community. Drop-in center activities are designed to respond to the emotional, social, behavioral and developmental needs of teens, to help them cope with their difficulties, to increase their individual skills, to expand their life skills, to enable optimal integration and adaptation in the community and to prevent overt and covert dropping out. ELEM's centers create a safe space, enabling a basis for developing optimal personal relationships, and help with regulating and minimizing risky behaviors, developing trust and helping with identity formation through partnership and mutuality in the process.

Teens come to the drop-in centers in the afternoons and evenings and during the rest of the time they are part of the local community: most of them are high school students and at the end of the activities they return home, to their neighborhoods and communities. Therefore, with a view to preserving the continuum of therapeutic and educational responses, drop-in center staff work cooperatively with welfare departments, the psychological services, schools, steering committees and roundtables in the local authorities.

In addition to the youth centers, ELEM operates six "Shlukim", which are social-emotional spaces inside schools, which are an address for students. The Shluk program, whose effectiveness has been demonstrated in research (by the Szold Institute and the National Insurance Institute Fund for Special Activities, 2022), operates throughout the country and is among the pool of programs and solutions in the GEFEN (Flexible Administrative Policy) system.

2,234

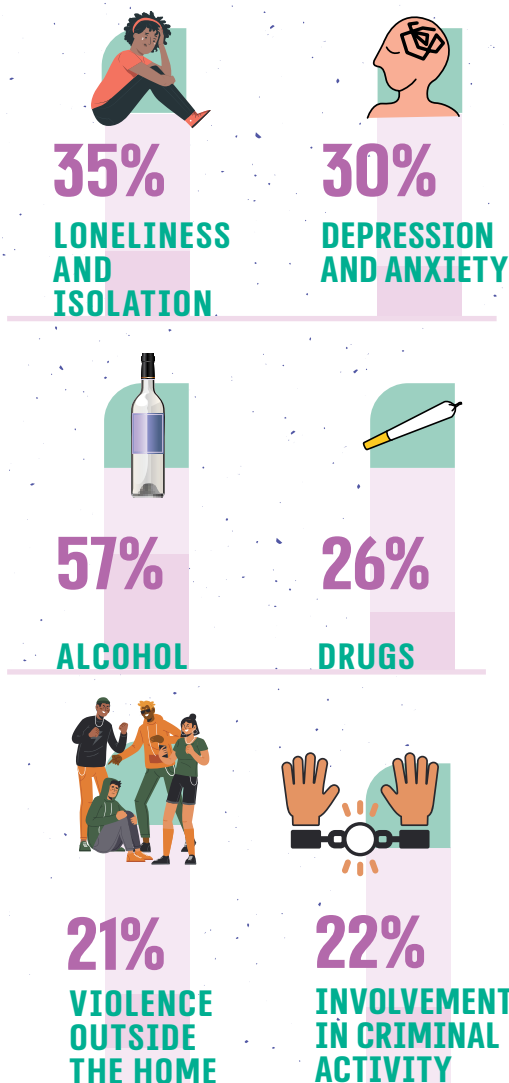
TOTAL TEENS
AND YOUNG
ADULTS SERVED



59% BOYS | 41% GIRLS



KEY ISSUES FACED BY TEENS AND YOUNG ADULTS SERVED BY THE YOUTH CENTERS IN 2022*:



EMOTIONAL PROBLEMS WITH AN EMPHASIS ON LONELINESS, ANXIETY AND DEPRESSION

This issue was prominent among teens at the youth centers, together with an increase in reports of lack of motivation to function, self-harm and eating disorders. Loneliness and the emotional difficulties that accompany it were experienced in all areas of life – at school, at home, in the neighborhood, on the street. Being alone and anxious in all places, all hours of the day, at different levels. Likewise, more and more youth shared that they are treated with psychiatric medications.

DRUG AND ALCOHOL USE

Use of drugs and alcohol has been prominent in the lives of teens at the centers for several years. This year we saw a trend of decrease in the age of use, beginning at age 12, in which obtaining substances is easy, quick and convenient – word of mouth, from friends or on social media. Nitrous oxide (whipped cream gas) continued to be most common this year, and we also saw an increase in abuse of Ritalin.

VIOLENCE, CRIMINAL ACTIVITY AND VANDALISM

Violence is an issue that has continued to become more extreme in recent years – violence at school, in neighborhoods, on the street and in parks, and this also affects the discourse and atmosphere among youth. In addition, there is a visible increase in use of objects that youth walk around with as weapons (knives, screwdrivers, scissors, “bang snaps” and other items).

*Percentages are of the total number of teens and young adults served by the youth centers

MILESTONES AND ACHIEVEMENTS OF THE YOUTH CENTERS IN 2022

DEEPENING RELATIONSHIPS WITH LOCAL AUTHORITIES

The youth centers’ collaborations with local authorities became stronger this year. One of the directors in the field explained that “there’s trust in ELEM’s work, and as an organization we are receiving more and more space to get involved in the local authority, to work together with them and have influence. We really feel there is a place for discussion and for our professional recommendations in local authorities and we have partners to talk to.”

CENTERS’ INVOLVEMENT IN THE ISSUE OF DROPOUTS

In cooperation with the Ministry of Education and local authorities, we have been working on tenders

to address the issue of preventing school attrition, through informal spaces operated by schools.

EXPANSION IN THE HAREDI COMMUNITY

This year we created a foundation for the work of two ultra-Orthodox youth centers in Beit Shemesh (in cooperation with the Welfare Department), one for teen girls and one for teen boys. The center for girls also operates in the mornings and provides an educational framework, in cooperation with the Welfare Division and the Education Division in Beit Shemesh.

CREATING NEIGHBORHOOD BRANCHES

This year we opened branches of youth centers in certain neighborhoods in which a specific need arose for a solution for youth. For example, a branch of the youth center was set up in an additional neighborhood in Nof Hagalil.

STREET OUTREACH IN 2022

NATIONAL DIRECTOR: ROY HOMRI



3,881
TOTAL TEENS
AND YOUNG
ADULTS SERVED



72% BOYS | 28% GIRLS

STREET OUTREACH MEETS YOUTH AT RISK IN THE SPACES WHERE THEY ARE LOCATED, THROUGH OUTREACH VANS SPREAD THROUGHOUT THE COUNTRY, BY CREATING OPTIMAL CONNECTIONS, LISTENING AND BUILDING TRUST, WITH THE GOAL OF PREVENTING DETERIORATION INTO SEVERE RISK SITUATIONS.

Every night, hundreds of youth roam in the streets, in parks, in public squares, in hangout spots, at parties and on social networks. ELEM's street outreach teams locate youth on the street and reach them with outreach vans during evening and night hours, on set days in set places, and "set up shop" with mats, chairs, tables, food, drink and more. The mobile outreach teams create a space to connect with the teens at their level, and through nonjudgmental conversation, reaching their hearts and building trusting relationships, becoming part of the landscape on the street and receiving recognition and legitimation from the youth as available, known, beneficial models in the teens' lives.

ELEM operates outreach vans in 24 cities and towns throughout the country, and each outreach van also has extensive activity on social networks, which are "the new street" for youth where a significant portion of their activities has moved in recent years.

ELEM's street outreach work also includes identifying and assisting youth in crisis situations at outdoor parties (raves) through the "Good People" project. At these parties, ELEM teams provide onsite emotional first aid for young people who do not feel well or who are in crisis due to use of psychedelic mind-altering substances. The teams work to reduce their resultant anxiety and provide necessary support



KEY ISSUES FACED BY TEENS AND YOUNG ADULTS SERVED BY STREET OUTREACH IN 2022*:



*Percentages are of the total number of teens and young adults served by the street outreach.

MILESTONES AND ACHIEVEMENTS IN 2022

DEEPENING STREET OUTREACH IN THE ARAB COMMUNITY

In 2022, street outreach in the Arab community expanded. More details can be found in the section on work in the Arab community (page 20).

DEEPENING INTERNET WORK

The increasing presence of street outreach teams in internet spaces frequented by the youth we encounter on the street enables the teams to more easily reach teen boys and girls who find it hard to open up face to face, to locate more youth in distress and to identify areas that are prone to risk and then to plan for reaching these youth, locate and connect with them. Thus, this year, due to intensive internet work, we located the places where youth were gathering at the Sea of Galilee during the summer and established spaces for identifying and supporting them there.

DEEPENING STREET AND INTERNET OUTREACH IN THE HAREDI COMMUNITY, ESPECIALLY HAREDI TEEN GIRLS

The main expansion of ELEM's work in the ultra-Orthodox community happened this year on social networks, where the presence of Haredi youth is

increasing. Simultaneously, we deepened ELEM's work in social networks in spaces in which Haredi youth operate, with an emphasis on Haredi girls who are characterized by different and unique risk situations.

EXPANDING COLLABORATION WITH LOCAL AUTHORITIES

Collaboration and the ability to initiate and have influence in local authorities expanded this year. In many cases, the ELEM street outreach van became "the eyes of the local authority" regarding what was happening in the field and the professional entity on relevant issues. Mobile teams initiated and participated in forums, committees and roundtables and were invited to train educational staff, social workers and psychological services in different cities.

DEEPENING ASSISTANCE OFFERED AT RAVES

ELEM's presence at outdoor parties in nature, through the "Good People" project, constitutes an anchor for many teens and young adults, as the phenomenon of raves becomes more widespread. Many phenomena that we have seen over the years on the street have spread to raves in recent years, and ELEM makes sure to be at these events to assist youth in coping with psychotic and emotional crises as they occur.

EXTREME RISK IN 2022

NATIONAL DIRECTOR: MAYA BARON



THE EXTREME RISK AREA HELPS TEENS AND YOUNG ADULTS WHO HAVE BEEN HARMED, NEGLECTED OR EXCLUDED FROM SUPPORT SYSTEMS DURING THEIR LIVES, TO ESCAPE THE RISK SITUATIONS IN WHICH THEY FIND THEMSELVES AND PROVIDE THEM WITH A SENSE OF BELONGING, TRUST AND CONFIDENCE IN THEMSELVES AND IN THEIR ENVIRONMENT.

This area provides a response for three populations: 1) Homeless young adults 2) Teens and young adults who survive through prostitution 3) Young women and teen girls who are coping with the consequences of ongoing sexual abuse in childhood. These populations are characterized by detachment and isolation from social, familial and economic support systems, and by coping with complex post-traumatic stress due to abuse, neglect and violence they suffered in childhood and even in the present. All these create damage to mechanisms that enable adaptation to life and coping, and therefore most of these youth are excluded from society and survive through prostitution, homelessness, criminal activity, addiction and other extreme situations.

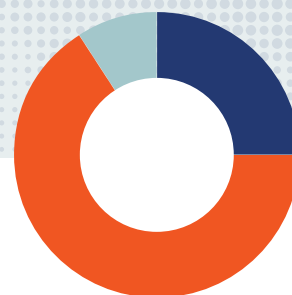
ELEM's extreme risk centers serve as an enveloping and protective space. Most operate 24/7 and provide a holistic response that includes: acceptance in emergency situations and providing humanitarian assistance to minimize physical and emotional damage (a respite from the street, food, shower, overnight accommodation); creating optimal, stable connections, sometimes for the first time in their lives, with the staff; helping them access entitlements; guidance regarding work, study and housing options – in a gradual process customized for each individual.

Currently, ELEM operates 8 extreme risk centers throughout the country in cooperation and with funding from the Ministry of Welfare and in most cases also in cooperation with local authorities – in Tel Aviv, Jerusalem, Haifa, Petach Tikvah, Eilat and Dimona. Among the extreme risk centers, there are 5 "Halev" spaces for sexually-exploited young women/men and those involved in prostitution, 2 centers for homeless youth and one center for young women and teen girls who have experienced ongoing sexual abuse in childhood.

24/7 hotline for extreme risk: 054-9773666



686
TOTAL TEENS
AND YOUNG
ADULTS SERVED

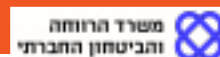


25% BOYS | 66% GIRLS
9% TRANSGENDER

MEANINGFUL PARTNERSHIP WITH THE MINISTRY OF WELFARE

ELEM sees great importance in our longstanding close and fruitful partnership with the Ministry of Welfare and Social Security, which has deepened over the years.

Over the years, the different responses for youth at extreme risk have expanded from projects that provided assistance on the street, through day centers that were open for a few hours, to holistic programs that are open 24/7. The Ministry of Welfare began to address the issue and to operate designated frameworks for this population six years ago, among other reasons due to testimony from ELEM teens and young adults before Knesset committees and the designation of welfare budgets, which led to expanding existing responses and opening new service for youth facing extreme risk.



KEY ISSUES FACED BY TEENS AND YOUNG ADULTS FACING EXTREME RISK IN 2022*:



86%
LONELINESS AND ISOLATION



44%
SELF-HARM

LONELINESS AND ISOLATION

Loneliness and isolation among the population at extreme risk is an existential experience. Most of them do not have family or social backing and in leaving the life of the street and rehabilitating their life paths, they do not find themselves in normative society. Many times, the distresses they find themselves in are due to isolation – anxiety and depression, difficulty functioning, drug and alcohol use, violence, suicidality, self-harm and more.

Among youth on the extreme risk spectrum from the Arab community or transgender youth, isolation and difficulty building independent lives are even more pronounced.



71%
ALCOHOL



64%
DRUGS

DRUG AND ALCOHOL USE

Drugs and alcohol are used by youth at extreme risk as a survival strategy. Life on the streets wears down defense mechanisms, and therefore, use of mind-altering substances is a mechanism for survival and self-soothing. Often repeated use of addictive substances worsens post-trauma symptoms and deepens the harm to functioning over time, which then contributes to additional increase in use of addictive substances, such that the two disturbances (PTSD and addiction) feed each other.



63%
SEXUAL VIOLENCE

SEXUAL VIOLENCE

Every year, a high percentage of the youth at extreme risk report sexual trauma, both from childhood and from life on the street and prostitution, and they cope with the consequences and symptoms of sexual harm – dissociation, flashbacks, nightmares, eating disorders and self-harm.

At the extreme risk centers, youth receive assistance in coping, first through building trust with meaningful adults at the center, and later by receiving tools for optimal daily functioning. At a later stage, there are efforts to help them treat the trauma and to grow.

*Percentages are of the total number of teens and young adults served in extreme risk services.

MILESTONES AND ACHIEVEMENTS IN 2022



PARTICIPATION OF EXTREME RISK YOUTH AND STAFF IN COMMITTEES, ROUNDTABLES AND DISCUSSIONS AT THE KNESSET ON SEVERAL ISSUES:

- Change in policy towards Statusless people in the context of the law against consumption of prostitution services, expressed in granting work permits to Statusless people who have permits to stay, thus lowering the risk that they will easily enter the cycle of prostitution.
- Change in policy towards transgender people in prostitution – with the goal of providing relief for this population in dealing with bureaucratic processes.
- Roundtables on the topic of minors in prostitution that took place in local authorities.

DESIGNATED SPACES FOR YOUNG MOTHERS IN PROSTITUTION

This year, hand in hand with the ELEM program for young mothers at risk, we deepened the response provided to young mothers on the prostitution spectrum, with the goal of providing them support and treatment appropriate to their needs. We established a new space in Dimona and expanded an existing space in Eilat.

“EXTREME RADIO” WORKSHOPS

Extreme Radio is a project in which each of ELEM's extreme risk programs has an internal podcast, led by staff who have received special training for this, together with youth in the program. The project is based on an approach that radio can serve as an empowering tool that enables the voices of youth at risk to be heard. The workshops were led by volunteers with the goal of training additional volunteers to assist in developing the radio as a therapeutic tool in different programs.

SEXUAL ABUSE RESPONSE IN 2022

NATIONAL DIRECTOR: AMIR DLOOMY

ELEM'S SEXUAL ABUSE PROGRAM PROVIDES PROFESSIONAL TREATMENT FOR CHILDREN AND YOUTH AGED 4 TO 18 WHO HAVE BEEN SEXUALLY ABUSED OR HAVE SEXUALLY ABUSED OTHERS.

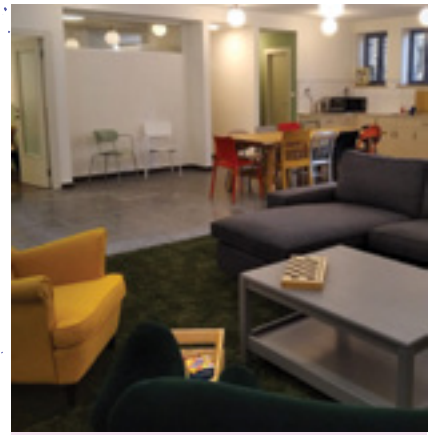
Therapeutic treatment is provided in one or more of the following programs:

Treatment centers designed for children and youth referred to ELEM by the Ministry of Welfare, at several treatment centers throughout the country – in Tel Aviv (including Yafo and Bat Yam), Afula (and the valleys area and Shefaram), and Bnei Brak (and the Modi'in Illit and Elad region).

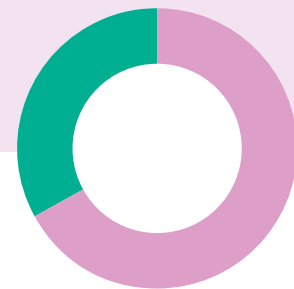
A customized program is built for each child or teen, including individual and family therapy, in which parents and other family members participate. Sometimes families are referred to us in which there are perpetrators and victims in the same family, and treatment is provided for the family as appropriate to each situation.

In addition, ELEM operates a therapeutic program under the youth probation service for minors who have been arrested or a criminal case has been filed against them due to sexual harm, and as part of the process they are referred to group therapy led by ELEM professionals. ELEM is the only organization in the country that treats teen boys/girls involved in these criminal proceedings, with 30 groups throughout the country. Group therapy enables perpetrators to share and assists them in taking responsibility for their actions, in understanding the consequences of their actions for the victims, and understanding of the circle of harm, for the purpose of preventing them from harming again in future. Some of the groups are homogenous, such as: a group for teen boys from the Arab community; a group for teen boys who harmed on the internet; and groups for gang rape in which all the perpetrators from the same incident are in a group together.

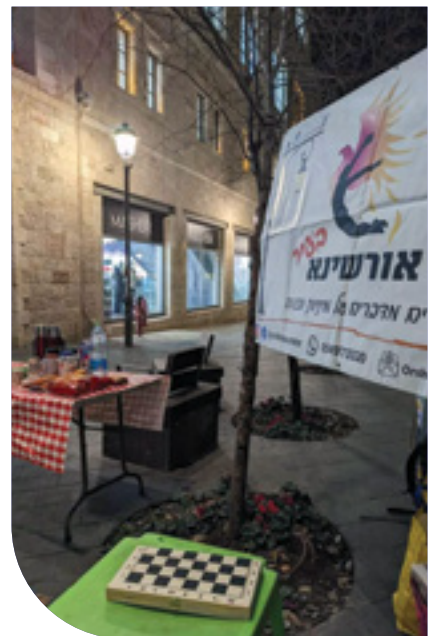
In the past year, ELEM also established "Orshina," the first center in Israel to treat teen boys who have been sexually abused, a joint project with the National Insurance Institute Funds. Orshina is located in Jerusalem and designed for teen boys aged 13-18. The center offers teens group therapy, a social space, individual therapy, parent counseling, group social activities and assistance with receiving entitlements. In addition, the Orshina staff conduct street outreach in the "Orshina in the City" program, to locate and support youth who have been sexually abused



540
TOTAL YOUTH
AND CHILDREN
SERVED



67% BOYS | 33% GIRLS



Contact ELEM centers for sexual abuse: 03-6477898 | Contact Orshina: 0549773320

KEY ISSUES FACED BY CHILDREN AND YOUTH SERVED BY THE SEXUAL ABUSE RESPONSE TEAM IN 2022*:



15%
**SEXUAL ABUSE
IN THE HOME**

SEXUAL ABUSE IN THE HOME

In 2022, the return to structured frameworks following the pandemic, and the return to daily interactions with adults such as teachers and counselors and others in educational frameworks led to an increase in reports of sexual abuse at home, and thus to more referrals to ELEM centers. It is important to note that abuse occurs throughout the country and in all sectors.



50%
UNDER AGE 12

DECREASE IN THE AGE OF YOUTH REPORTING/ REFERRED

In light of increasing public and media attention to sexual abuse, awareness of the subject has increased greatly in recent years, and this has led to an increase in reports of abuse also at earlier ages such as reports of preschool and elementary school aged children. Sometimes we assist in guiding staff who work within these frameworks and in many cases with focused treatment for children who are referred for treatment.



5%
**SEXUAL ABUSE ON
THE INTERNET**

SEXUAL ABUSE ON THE INTERNET

As part of the identified increase in general bullying on the internet, in 2022 we were exposed to more incidents of sexual abuse on the internet such as sharing photos and self-exposure on the internet, sometimes to the point of blackmailing and threats about revealing photos or solicitation of sexual acts. The youth who are referred to us for treatment are both victims and perpetrators.

*Percentages are of the total number of teens and young adults served in sexual abuse response.

MILESTONES AND ACHIEVEMENTS IN 2022

OPENING A CENTER IN BNEI BRAK WITH BRANCHES IN MODI'IN ILLIT AND ELAD

For the first time, the centers for sexual abuse have introduced treatment in Haredi towns, a meaningful step that required recruitment of men and women employees from the ultra-Orthodox and religious communities and adopting customized work methods. Since opening, the center has successfully worked with 60 male and female clients.

NEW HOLISTIC PROFESSIONAL TRAINING FOR THERAPISTS

For the first time in Israel, we opened a therapeutic course that taught therapeutic work with children and youth who are victims of sexual abuse and with child and youth offenders, using a therapeutic approach that believes that the therapist must have knowledge of both sides in order to approach therapeutic work with a broader perspective. The first cohort opened at the end of 2022 and learned theory and practical tools for therapeutic work with

the spectrum of sexual abuse in children and youth. The successful course trained 34 therapists who were referred by treatment centers throughout the country, probation officers, private therapists and treatment professionals from within ELEM.

PROFESSIONAL TRAINING FOR DBT CERTIFICATE

This year, for the first time, the entire sexual abuse team at ELEM was trained in certificate studies in Dialectic Behavioral Therapy with populations on the extreme risk spectrum.



ELEM DIGITAL AND TECHNOLOGY IN 2022

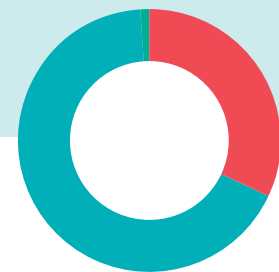
NATIONAL DIRECTOR: Yael Warshawsky

OUR DIGITAL AND TECHNOLOGY RESPONSE IDENTIFIES DISTRESS IN THE LIVES OF TEENS AND YOUNG ADULTS IN THE VIRTUAL SPACE, PROVIDES A THERAPEUTIC PROFESSIONAL RESPONSE ONLINE AND DEVELOPS INNOVATIVE WAYS TO WORK IN THESE INFORMAL SPACES.

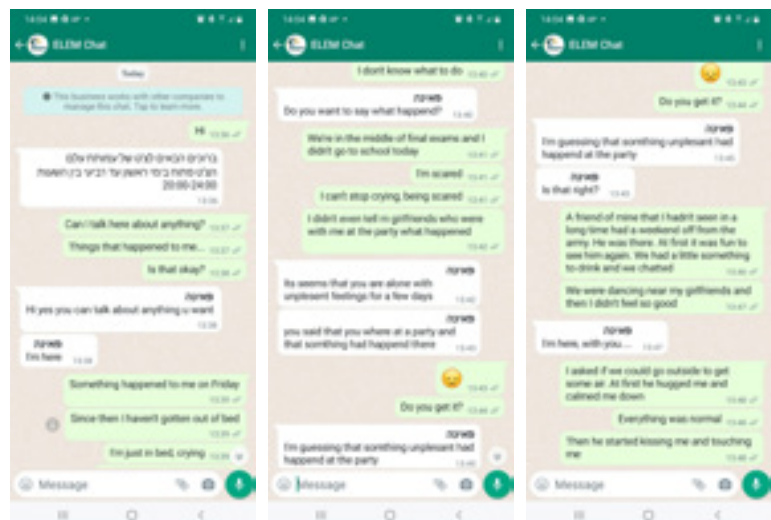
In recent years, use of internet and social media has become an inseparable part of life, mainly among children and youth who have grown up with it and spend many hours of the day online. Accordingly, it has become increasingly important to meet youth in digital spaces, to provide appropriate responses and to expand assistance available to them in these spaces. ELEM's digital and technology department is a significant entity for teens and young adults at risk in the informal internet space, through two communication channels:

1. A system for identifying youth online, making connections and providing short-term interventions.
 - A system of intervention for youth that includes assistance, support, mediation and intervention for emotional issues and crisis situations. The responses are staffed by volunteer professionals who undergo extensive training designed for providing emotional support on the internet. The intervention channels are:
 - Personal, anonymous WhatsApp chat: 054-942-4062, also available in Arabic
 - Personal, anonymous chat: yelem.org.il and in Arabic yelem.org.il/ar/Arabic
 - TikTok: www.tiktok.com/@elem.digital
 - And in Arabic www.tiktok@elem.digital/arabic
 - Instagram: instagram.com/elem.digital and in Arabic: instagram.com/elem.digital.arabic
 - Communities: "Fireflies" – private Facebook group for teen girls only.
 - Discord – groups according to age.
 - Email: support@yelem.org.il
 - Tov Center – therapeutic center for crisis intervention. A joint project with the 105 hotline and the National Insurance Institute.

The technology division is also responsible for developing platforms and innovative methodologies that can provide meaningful tools for responding to youth in the internet space.



32% BOYS | 67% GIRLS
1% TRANSGENDER



KEY ISSUES FACED BY TEENS AND YOUNG ADULTS SERVED IN INTERNET SPACES IN 2022*:

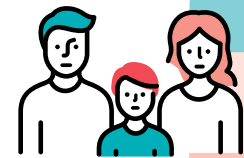


LONELINESS, DEPRESSION AND ANXIETY

This year, many of the internet interactions concerned emotional distress. We continue to hear from youth about experiences of severe isolation, lack of feeling seen by those around them, and about difficulties making social connections. While youth seem to be functioning, going to school, and are socially active, many of them are painfully lonely, isolated by depression, anxiety, suicidal thoughts and more.

RELATIONSHIPS WITH PARENTS

Teens reported difficulties and complexities in their relationships with their parents. This is a topic woven into practically every one of our online interactions with youth



NEARLY 100%

*Percentages of total number of teens and young adults served by ELEM digital.

MILESTONES AND ACHIEVEMENTS IN 2022

JOINT PROJECT WITH THE CHILD ONLINE PROTECTION BUREAU 105

In the framework of the joint project with the Child Online Protection Bureau and the National Insurance Institute Funds, a center for online intervention was established providing 6 therapy sessions following a crisis. The center is the first of its kind and provides a response for youth who were harmed on the internet and served by the 105 hotline. The project operates according to a unique short-term intervention model developed to meet the needs and issues handled by the 105 hotline.

TIKTOK

The TikTok network, which has gained great momentum in recent years, is for many teens a kind of personal diary with content documenting their daily lives, including thoughts, fears, struggles and more. As part of ELEM digital's professional focus in new spaces where youth are found, the professional staff

tracks digital footprints of teens on TikTok, locates, reaches, intervenes and refers them as needed.

THE ARAB COMMUNITY

Recognizing the cultural differences of the Arab community, and in light of teens' need for culturally and linguistically customized responses in social network spaces, a designated team was established to locate and intervene online through individual chat, WhatsApp and TikTok.

COMMUNITIES

One of ELEM Digital's goals is to position ourselves as the "responsible adult" online in spaces where youth are found. Discord is an application and internet site that was originally intended for online gamers, which has gained momentum among teens who are frequently connected there. Recently, an ELEM Digital server was established on Discord to be a platform for managing intentional online communities based on needs.

INDEPENDENT LIVING IN 2022

NATIONAL DIRECTORS: TAMI NAHAMIAS AND DANNY LEVIT

ELEM'S MENTORING FOR INDEPENDENT LIVING PROGRAM DIVISION PROVIDES TOOLS AND SKILLS FOR INTEGRATION AND MANAGING INDEPENDENT LIVING FOR TEENS AND YOUNG ADULTS WHO LACK BACKING AND/OR FAMILY, SOCIAL AND THERAPEUTIC

SUPPORT, WHO SURVIVE IN THE WORLD WITHOUT RESOURCES.

Mentoring for independent living works with youth who are practicing different aspects of life including employment, independent life skills, accessing resources and entitlements, social life and friendships, health, military or national service, further education and more. The area is comprised of a number of programs:

- "Young mothers" program that provides a continuum of responses and services to young mothers at risk (aged 18-26), through understanding that at the intersection between being a young woman at risk and a young mother with a risk background, these young women often fall between the cracks. ELEM locates the mothers and accompanies them in processes for building independent lives including employment, education and connections with different services in their area. The program mentors 120 young mothers at risk. Since establishing the young mothers program, ELEM has developed expertise on this topic and works for policy change in this area, with the creation of an intersectoral coalition to promote solutions for young mothers at risk and taking part in committee and roundtable discussions.
- "Partners on the Way" in collaboration with Bank Hapoalim and the business sector, is a program for promoting employment and mentoring for independent living for youth at risk. The teens are individually mentored in their journey to independent adult living, through weekly individual meetings with employees of the business (each employee mentors one teen). The mentoring meetings provide the teens with an experience of trust, stability and self-confidence. Among the companies in the program: Bezeq, Ceragon, Adama and more. In 2022, the program provided mentoring for about 50 teens.
- "From Dependence to Independence," in collaboration with the Ministry of Welfare, for long term personal accompaniment for graduates of Youth Protective Services residential centers, who are forced to cope with the challenges of leaving this framework and starting independent living. The holistic accompaniment program touches all areas of life: employment, education, housing, financial management, accessing entitlements, health and more. In 2022, the program assisted more than 500 young adults.



- "Supportive Envelope" program: ELEM provides a professional support system for bodies that operate centers for young adults at risk who have chosen to volunteer for national service through the Shlomit organization and the volunteer association.
- "ELEM Financial" project, in collaboration with Bank Hapoalim: mentoring for teens and young adults at risk, to help them develop correct and optimal financial and economic management.
- "Activist Communities" program for young women who are graduates of ELEM or who have similar profiles. The program works to influence the community at large through acquiring skills for activism, so that from a place where they were recipients of services, the young women move to a position of leadership, becoming partners in the process and change leaders in their own lives and the lives of those around them.

KEY ISSUES FACED BY TEENS AND YOUNG ADULTS SERVED BY INDEPENDENT LIVING IN 2022*:



51%
LONELINESS AND ISOLATION



41%
DEPRESSION AND ANXIETY

LONELINESS AND ISOLATION

The journey to independent living among youth at risk includes a great deal of loneliness and isolation. The issue of loneliness was central in the individual mentoring of young adults and young mothers, with most of them sharing that they rarely leave home and suffer from depression, anxiety, communication difficulties and social difficulties.



30%
FALLING BETWEEN THE CRACKS

FALLING BETWEEN THE CRACKS

Many young adults find themselves falling "between the cracks", that is, in the spaces between different services provided for their distress, which prevents them from accessing different rights they are entitled to based on their status as teens/young adults at risk. This topic came up repeatedly and has become part of their daily struggles.



38%
VIOLENCE AT HOME AMONG YOUNG MOTHERS



23%
VIOLENCE AT HOME

VIOLENCE AT HOME

Many of the young adults survive alone in the world, and those who come with family backing often come with complex backgrounds. Thus, for example, among young mothers, 40% shared that they experienced violence in the homes they grew up in, while 38% are in violent relationships today.

*Percentages of number of teens and young adults served in accompaniment for independent living.

MILESTONES AND ACHIEVEMENTS IN 2022



SIGNIFICANT EXPANSION OF THE YOUNG MOTHERS PROGRAM

This year we doubled the number of centers and coordinators in the young mothers program, which led to an increase in the number of young women receiving customized mentoring, according to each mother's needs. After two years of activity, the young mothers program has become a recognized program to which young mothers are referred.

SUCCESSFUL BUSINESS PARTNERSHIPS FOR EMPLOYMENT

2022 was a year of growth in the "Partners on the Way" program that provides teen boys and girls entering the employment world with mentoring by businesses. A new center was opened with the Ceragon company and there were successful partnerships with companies that have been in the program for years, Adama and Bezeq.

ACCOMPANIMENT FOR YOUNG MOTHERS BY BUSINESS SECTOR PARTNERS

This year we deepened the successful partnerships with companies that mentor young mothers for independent living and invest in their training, in employing them, and in accompaniment that sees their needs and their children's needs. The companies include Bank Hapoalim, HP Indigo, Nova and other companies.

SUCCESS OF THE NEWISH PROJECT

The neWish employment project, run by young women from ELEM's Alma program, had another year of successful activities. neWish is an online store for second-hand children's clothes, operated by Alma, that enables young women to develop, support themselves and be empowered as independent working women.

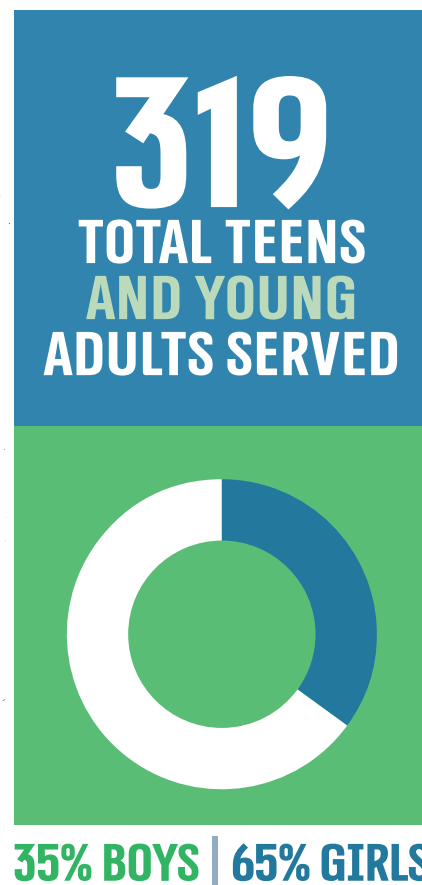
ARAB SOCIETY IN 2022

NATIONAL DIRECTOR: KHALIL HOMEIDI

THE ARAB SOCIETY DIVISION PROVIDES SERVICES FOR YOUTH AT RISK IN THE ARAB COMMUNITY, AND PROVIDES CONSULTATION AND GUIDANCE FOR OTHER ELEM PROGRAMS THAT PROVIDE SERVICES IN THE ARAB COMMUNITY.

The area includes:

1. Mobile outreach vans in 6 Arab cities and towns: Iksal, Nazareth, Kafr Kanna, Deir Al-Asad, Turan, and an outreach van being set up in East Jerusalem.
2. Two "Nur" centers designed for Arab teen girls and young women (aged 17-26) coping with social, economic, family and social distress, who suffer from minimal opportunities. The centers operate in cooperation with the Ministry of Welfare, the Rashi Foundation, Bader Philanthropies, National Insurance Institute Funds and ELEM, and operate during the day in Ramla and Majd Al-Krum.
3. A social engagement project, "Midad" for young men and women in the Arab community in collaboration with the National Insurance Institute Funds in Majd Al-Krum.
4. Other ELEM projects designed for the Arab community: youth center in Acco; treatment center for sexual abuse victims and perpetrators in Shefaram; centers for young men and women on the extreme risk continuum in Haifa, Jerusalem and Tel Aviv; and online solutions in Arabic.



KEY ISSUES FACED BY TEENS AND YOUNG ADULTS IN THIS AREA IN 2022*:



VIOLENCE

Violence among youth in Arab society, as a subset of the Arab community as a whole, is a widespread and severe issue. This year we encountered a large number of reports among youth served by outreach vans in the Arab community, of severe incidents of violence, vandalism and vagrancy. The character and depth of violence is different and unique in each town and village and therefore coping with the issue is unique in each arena of operation.

DRUG AND ALCOHOL USE

As part of the cycle of violence and criminal activity, reports of use of drugs and alcohol among youth served by outreach vans in the Arab community are at a high level. The use of nitrous oxide (whipped cream gas) is especially prominent.

*Percentages are of the total number of teens and young adults served in the Arab community.



” كان وسيبقى دائما الامل الذي فتح لي عدة ابواب للحياة ولرؤيتها بشكل جميل هو الذي اعطني الأمل والأيمان بأن اكون نفسي واحبها كما هي كي اشرق واساعد وان اكون كما احب



“The Nur center is and remains the place that opened doors of hope for life for me and gave me the faith and confidence to be myself, how I like and want to be.”

MILESTONES AND ACHIEVEMENTS IN 2022



PROFESSIONALIZATION AND DEEPENING STREET OUTREACH WORK IN THE ARAB COMMUNITY THROUGH STRENGTHENING CONNECTIONS WITH LOCAL AUTHORITIES AND THE MINISTRY OF WELFARE

This year, we expanded and intensified street outreach work in the Arab community, with outreach vans in 6 Arab cities and towns, in cooperation with the Ministry of Welfare, which has been a key entity and partner in working with the local authorities and setting up street outreach in the Arab community. The presence of ELEM on the Arab street for the first time is an important step in recognizing the key arenas where Arab youth are found, understanding and mapping the different needs, and building programs and responses customized to the unique needs of the Arab community. Thus, for example, during the year, unique workplans were built for each of the outreach vans, in collaboration with the local authorities and welfare departments, with the goal of creating more customized services for coping with local violence, in all its forms. In addition, we held many sessions for outreach and explanation in local schools and in collaboration with local authorities, with the goal of exposing youth to ELEM’s work and highlighting dangerous phenomena such as use of nitrous oxide (whipped cream gas)..

ART EXHIBITION PRESENTED BY THE YOUNG WOMEN OF NUR RAMLA

The exhibition, presented in 2023, was the culmination of a process that took place throughout 2022, enabling a glimpse into the personal stories of these pioneering young women.

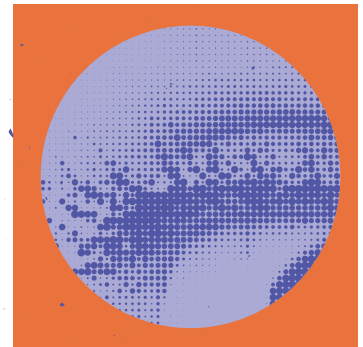
STARTING A PREPARATION FOR EMPLOYMENT PROGRAM FOR GRADUATES OF YOUTH PROTECTIVE SERVICES IN THE ARAB COMMUNITY

This year we successfully started and ran a preparatory program in Shefaram for 35 teen boys and girls, in collaboration with Bank Hapoalim and Amdocs. During the program, the teens learned tools and skills to prepare for employment, studied Hebrew and received digital training and more.

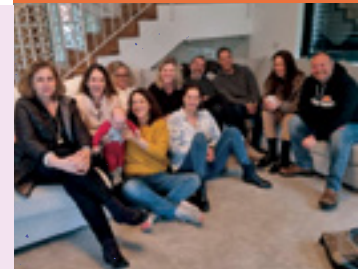
MAKING SPACE FOR SOCIAL AND NATIONAL SENSITIVITY

Since Operation “Guardian of the Walls” in May 2021, which provoked expressions of nationalist violence in many locations in the Arab community throughout the country, ELEM staff have addressed this issue in a wider scope, in a sensitive and accessible way, both during routine times and during less stable periods.

LOOKING FORWARD



2022 WAS A YEAR OF CHANGE AT ELEM. WE ARE LOOKING FORWARD AND MANIFESTING ELEM'S VISION AND MISSION: TO HELP AND CREATE CHANGE FOR YOUTH AT RISK.



The pandemic period left its mark on the entire economy. Just as businesses are struggling with a challenging economic situation, nonprofit organizations, including ELEM, are also struggling. At the same time, following the increase in distress metrics among youth, a product of the post-pandemic period, we have continued to help wherever needed, and have been working hard to ensure that the population at the center of our activities is not harmed further.

Following a strategic process, and from a sense of responsibility for the continued existence of ELEM's important social role of providing unique solutions for the distress of teens and young adults, we found it necessary to update the organization's focus, with required budgetary adjustments and planning a new organizational structure, a process that will deepen ELEM's work.

THE NEW ORGANIZATIONAL STRUCTURE INCLUDES FOUR CORE PROFESSIONAL AREAS:



TRAUMA | DIRECTED BY MAYA BARON

Coordinates the activities in all the projects that currently treat populations suffering from trauma. This area includes the programs that were under the areas of extreme risk and sexual abuse.



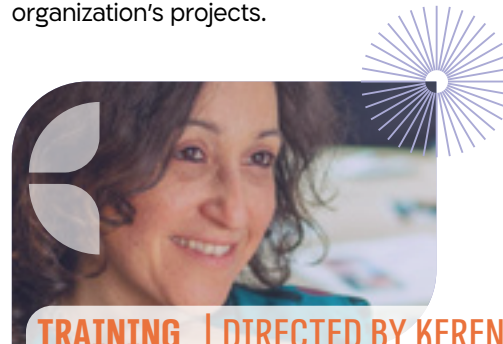
DIGITAL | DIRECTED BY Yael WARSHAWSKY

Coordinates solutions for locating and intervening with young adults and teens in the virtual world, serves as a professional knowledge body for promoting solutions and ELEM's presence in the virtual spaces in all the organization's projects.



COMMUNITY | DIRECTED BY KHALIL HOMEIDI

Coordinates the projects of youth centers, street outreach, and independent living. The area emphasizes holistic responses to the needs of target populations and close cooperation with local authorities.



TRAINING | DIRECTED BY KEREN NAOR

Provides training, development and preservation of organizational knowledge, professional support and manages ELEM's unique professional knowledge and practice in all the projects and centers across the organization.

In order to provide support to the field, this year we introduced new operational functions that accompany projects in the field, such as organizational operations, tenders and work with the public sector, coordination of administration and operations for each area, legal counsel and more.

Strengthening the organizational infrastructure and streamlining took place together with technological development, promoting innovation and advancement. ELEM is not a for-profit business and its activities do not center on a product but rather on youth; at the same time, ELEM is marching forward together with the rest of the world.

Thus, for example, in 2022 we entered the TikTok arena and gaming communities for the first time, with the goal of tracking digital footprints in arenas where teens gather, to locate, address and assist them. In addition, we deepened our internet work in all our areas of in-person work – on the street and in the community – with the goal of reaching additional circles of youth and assisting them on social networks.

In addition to the changes in structure and infrastructure, this past year brought significant personnel changes.

In July 2022, we were pleased to welcome ELEM's new CEO, Tali Erez.

Tali, who joined ELEM 9 years ago, was previously the director of ELEM's resource development and fundraising department. In this role, she served as

a member of the executive team and was responsible for raising the organization's budget. Prior to that, she served as project manager in the resource development department, where she managed large scale campaigns such as the annual fundraising event, a national canvassing day, the ELEM race and more. In her previous roles, Tali served as the director of publicity and marketing for WIZO San Francisco and the Bay Area in the USA, and in management positions with Pelephone and Partner.

In addition, in August 2022, we were pleased to welcome Danny Levit as ELEM's COO.

Danny comes with extensive experience in a range of field and national roles in the Israeli Scout movement over a 15-year period, mainly in his most recent role as Vice President of Education and Operations for the movement.

In recent years, he also led a number of other social and educational projects for youth in Israel. In addition, Danny and his wife Liron are house parents for a foster home for 12 children and youth at risk under the auspices of the Orr Shalom organization (this in addition to raising their own four children). Previously, Danny volunteered for four years in ELEM's outreach van in Bat Yam, an experience he describes as formative and meaningful.



ELEM CONTINUES TO MOVE FORWARD AS A STABLE, LEADING ORGANIZATION WITH:

52 PROJECTS THROUGHOUT THE COUNTRY

260 EMPLOYEES AND 1,100 VOLUNTEERS

STRONG TECHNOLOGY AND OPERATIONAL INFRASTRUCTURE

Message from Tali Erez to ELEM employees in the midst of the period of changes:

There is no doubt that 2022 has been a challenging and complex year. From my first day in this position, I have strived to manage with maximal transparency, with dialogue and openness. I believe that the people at ELEM make the organization what it is, and they are the most important component in our success. I believe that today more than ever we have the right tools, the right teams, the right employees and the right management to lead the organization according to the organizational compass on which our activities are based.

We will continue to look ahead!



ORGANIZATION COMMITTEES

Board of directors

Shlomo Yanai, Chair
Ann Bialkin, ELEM USA, Chair
Lenore Ruben, ELEM USA,
President,
Prof. Amnon Lazar
Dalia Narkis
Talia Ze'evi
Prof. Miriam Golan
Nadav Grinshpon
Ofar Ezuz
Menachem Shalgi
Rachel Sharvit
Yitchak Scheinfeld
Dana Porter

Audit committee

Joseph Shetach, Chair
Tomer Cohen, CPA
Harel Cohen
Dina Glick, CPA
Keren Turjeman Segal, Adv.

Internal auditor

Daniella Manor, Accountant

Finance committee

Ofar Ezuz, Chair
Nadav Grinshpon
Yaakov Haimovitz

Professional committee

Rachel Sharvit, Chair
Prof. Miriam Golan
Nahum Michaeli
Prof. Amnon Lazar
Dr. Aharon York
Dr. Gila Amitay
Prof. Natti Ronel
Prof. Rivka Savaya
Prof. Shlomo Romi
Zohar Hemo
Lenore Ruben

Evaluation and research committee

Prof. Rivka Savaya, Chair
Dr. Aharon York
Dr. Gila Amitay

Volunteer committee

Liora Arnon, Chair
Dr. Aharon York
Sigal Friedman
Dr. Galit Ventura
Meital Shemer
Itzik Moyal
Miri Katzman
Meirav Saguy Yehudayan
Shimon Fanyan

Governance committee

Shlomo Yanai, Chair
Prof. Amnon Lazar
Dalia Narkis

Ethics committee

Nahum Michaeli
Rachel Sharvit

Scholarship committee

Menachem Shalgi
Talia Ze'evi

TRAINING AND PROFESSIONAL DEVELOPMENT

DIRECTOR: KEREN NAOR

AS AN ORGANIZATION THAT HAS BEEN WORKING WITH TEENS AND YOUNG ADULTS AT RISK FOR THE PAST 40 YEARS, ELEM IS A PIONEERING, LEADING PROFESSIONAL KNOWLEDGE RESOURCE.

Unmediated encounters with a wide range of youth on the risk spectrum, in the streets, in different centers, on social networks, in the school system and in therapeutic environments, provide ELEM's professional staff with deep familiarity with the target population, help identify phenomena and trends, and promotes development of innovative and creative methods.

The knowledge development area includes three key departments:

PROFESSIONAL TRAINING DEVELOPMENT

Provides accompaniment, guidance and space for professional development for employees and leads in improving skills for helping the target population, while helping employees cope with the complexity of their work. The department is comprised of experienced professionals from different disciplines who are responsible for supervision and training for all the organization's projects, providing support for learning and development processes in the field and expanding practices and methods for work with teens and young adults.

ORGANIZATIONAL KNOWLEDGE MANAGEMENT DEPARTMENT

Responsible for professional development in the organization, training employees, locating and acquiring knowledge, and making it accessible to the organization staff. This is done through promoting a supportive organizational culture, developing tools and mechanisms, and implementing them in staff's daily work processes. The department also includes "content experts" who are responsible for developing knowledge and managing practices on selected topics under their responsibility and making knowledge accessible and implementing it on an organization-wide basis and outside the organization. Such topics include independent living, homelessness and prostitution.

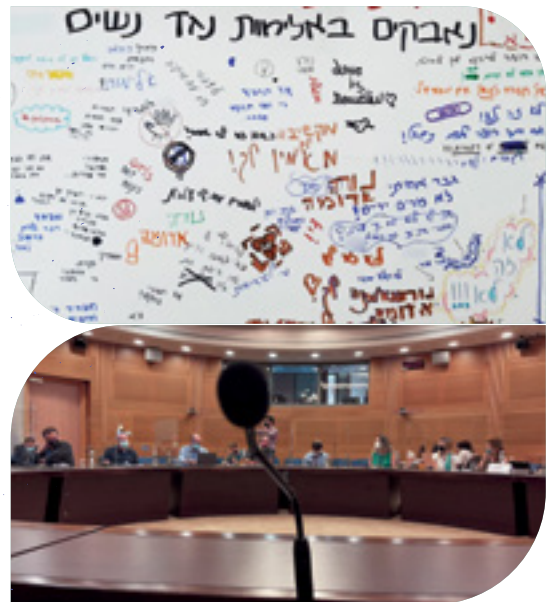
EXTERNAL TRAINING DEPARTMENT

ELEM's goal is to share our knowledge with other organizations and the general public and to work for policy change. For this purpose, we offer a wide variety of lectures, workshops, and information sessions to changing audiences - to various organizations, parents, the school system, and others - on diverse topics. The lectures are given by top lecturers, current and former ELEM employees, who bring extensive experience and knowledge acquired through their work. We lead training for professional teams, such as wraparound programs (in cooperation with the Shlomit organization and the volunteer association) for training coordinators who work with young people in national service, courses for training therapists who work with sexual abuse (in cooperation with the Ministry of Welfare) and more.

For further details and to arrange lectures, contact 054-9773701 or see the ELEM website.

HOLDING ONTO HOPE

IN 2022 ELEM CONTINUED TO WORK FOR A BETTER SOCIETY – FOR SOCIAL CHANGE THROUGH POLICY AND LEGISLATIVE CHANGE. DIVERSE INITIATIVES THIS YEAR INCLUDED:



DEVELOPING INFRASTRUCTURE FOR THE "HOUSING FIRST" PROGRAM

For years, the "Housing First" program has worked around the world to provide permanent housing solutions for homeless people, based on the view that it is possible to work on the other distresses people face once they have a permanent housing solution. This year, ELEM joined as a partner in the first innovative program for Housing First for the population in prostitution. We are in the initial stages of collaboration with government ministries, local authorities, philanthropic foundations and businesses on this important initiative.

CHANGING MODELS OF 24/7 SPACES

Our important collaboration over the years with the Ministry of Welfare and local authorities has provided the basis for expanding the model of ELEM centers for populations at extreme risk, so that the centers will operate 24/7. This is in light of the joint understanding that the needs of extreme risk populations are unique, and the solutions for them require provision of broader and deeper responses.

EXPANDING THE PROGRAM FOR ACCOMPANYING YOUNG MOTHERS

ELEM's project for accompanying young mothers at risk is becoming more established. With the years, we understand the great need for policy change for this population, and we are developing this program independently. The program is expanding and offers promise as the central and most professional solution for this population.

DEEPENING AND EXPANDING DIGITAL RESPONSES

Social change is a product of necessity. Over the years, it has become clear to us at ELEM that there is a broad need to adapt the responses ELEM provides to the digital arena, which is taking more and more space in our world, because youth are spending most of their time there. This year we entered new digital arenas (TikTok and Discord) and we are working on a joint government project to protect children on the internet. We anticipate continuing to develop in the digital arena in the coming years.

ELEM IN THE KNESSET AND LOCAL AUTHORITIES

As in prior years, in 2022 we worked to promote legislation and policy change through integrating employees and young adults from the organization in Knesset committees, roundtables and hearings on a variety of topics related to prostitution, the status of women, homelessness, therapeutic services and more.

ENOUGH VIOLENCE!

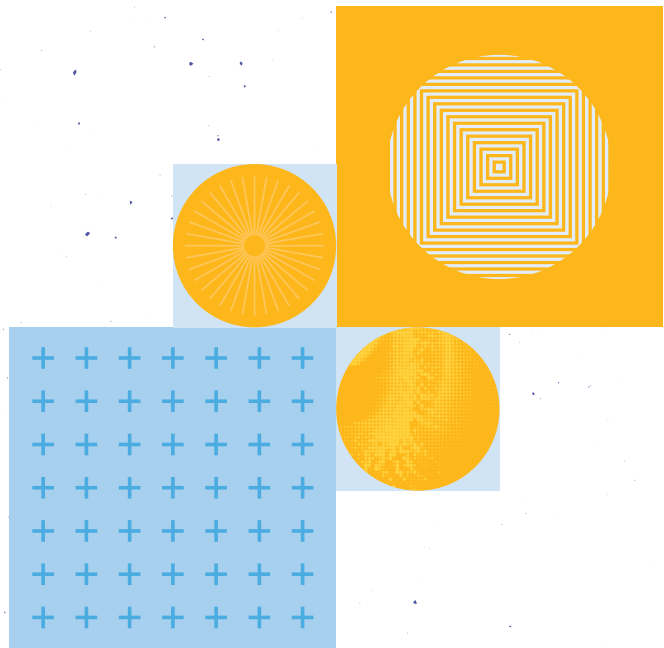
This year too, ELEM enlisted hundreds of employees, volunteers, teens and young adults in national struggles throughout the year against sexual assault and violence against women, issues that continue to come up frequently in public discourse and awareness.

We will continue to hold onto hope for social change! For a better future for our society and our children.

ELEM VOLUNTEERS

DIRECTOR: LEAH PRIZANT ADLER

1,100
ELEM
VOLUNTEERS



VOLUNTEERISM ON BEHALF OF YOUTH AT RISK IS THE CORE OF ELEM'S PROFESSIONAL ACHIEVEMENTS.

All the programs and responses provided by ELEM are built on an approach of volunteerism, which views volunteers as the productive force that operates and drives each project.

The volunteer department at ELEM recruits, develops, trains and accompanies all ELEM volunteers. Most ELEM volunteers are active once a week on a regular basis, and stay with the same project for many years, becoming an inseparable part of the staff helping teens and young adults.

In addition, over the past year, ELEM has been operating extensive volunteer projects in cooperation with dozens of businesses such as: Bank Hapoalim, Amdocs, Nova, Electra Consumer Products, Microsoft, Ceragon, Unilever, Bezeq, Adama, Axonius, HP Indigo, Finestra, Isracard, Fiverr, SAP and other companies. Cooperation in volunteering included programs to promote employment, mentoring, equipment donation, providing conference space and more. In addition, we cooperated on special events such as "Good Deeds Day" and similar events.

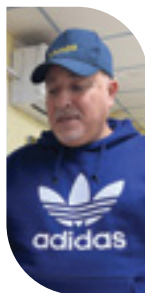
Throughout the year, different work areas at ELEM held evening and daytime events to honor and empower volunteers, which contributed to professionalism and increased the sense of belonging and appreciation of volunteers within the organization

THANK YOU TO OUR VOLUNTEERS FOR YOUR GIVING, YOUR INVOLVEMENT AND YOUR DEDICATION! HERE ARE SOME OF OUR VOLUNTEERS:

SHIMON FINEAN | VOLUNTEER AT HAFUCH, ASHDOD OUTREACH

"I want to be present for every teen who needs inclusion, listening and non-judgmental acceptance. The presence of a meaningful adult in their lives is vital and it's not an exaggeration if I say it's even lifesaving."

Shimon Finean, age 59, has volunteered for ELEM for 8 years, beginning with the Ashdod outreach van, and for the past six years at ELEM's Ashdod drop-in center. He comes to the youth center with his dog for a set shift once a week and sees great importance in work on behalf of youth.



MICHAL OVADIAH | VOLUNTEER IN PETAH TIKVA OUTREACH

Michal has volunteered in the outreach van in Petah Tikva for more than two years.

Her open heart, her dedication and caring are outstanding. Michal is the first to volunteer to bake a cake, to give a ride to someone who needs one, and to take additional shifts. When she comes for a shift, the magic begins. The teen girls wait to talk to her, for a hug or a warm word from her, all provided with unending sensitivity and great wisdom. Last August, Michal took part in a long and especially challenging volunteer opportunity in a unique project to locate youth at risk that we opened on the Kinneret beaches.



PESACH EISMAN | VOLUNTEER AT SAFED DROP-IN CENTER

"It's already been a decade that the teens at the center fill my heart every day anew. The deep conversations and the place that they occupy in my life are very meaningful to me. It causes true identification and openness between me and them." Pesach Eisman, age 81, has volunteered for more than 10 years in Safed. He was a doctor in the past, and after he retired, he decided to volunteer with youth at risk. Today he is part of the ELEM's Safed family.

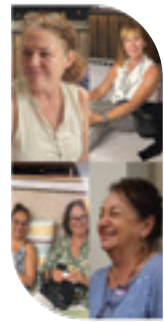


VOLUNTEERS AT "SOMEONE TO RUN WITH"

Pazit Raz | Yael Schechter | Lili Davidovich | Neta Binyamin | Hana Barzag

In 2022, Pazit Raz, Yael Schechter, and Lili Davidovich each celebrated ten years of volunteering with "Someone to Run With," our shelter for homeless youth. Together with them, Neta Binyamin and Hana Barzag celebrated 8 years of volunteering at the shelter.

They are part of the amazing team of dedicated volunteers, who come to the shelter on a set day each week, year after year, leaving busy routines, careers and family, to offer a hand to young people. They build relationships of trust that help these youth return to trusting other people and themselves, and slowly to rehabilitate their lives.



BATAMI SHOSHANI AND TEHILA HAREL | VOLUNTEERS AT DROP-IN CENTER, KIRYAT MALACHI

Batami and Tehila are national service volunteers who have been volunteering at ELEM's drop-in center for a year and a half. They come twice a week, without missing a single shift, always with a smile, with love, and with a lot of joy. They do not miss an opportunity to make connections with youth, with acceptance and inclusion and without judging any teen.



SAPIR BAR | VOLUNTEER AT KIRYAT SHMONA DROP-IN CENTER

Sapir came to ELEM three years ago, and from the moment she arrived she showed exceptional skills in listening and empathy, and therefore youth feel comfortable with her and find a safe person to lean on for advice and sharing. She is creative and takes initiative which has led to creative new projects at the drop-in center, including starting and leading a fitness and health group and a group for teen girls.



ORLY TZIFSER | VOLUNTEER AT ALMA

Natan Axelbord, age 61, has volunteered for the past five years with the Safed outreach van. He is appreciated and beloved by the teens because of his comfortable and accepting personality, his broad smile and giant heart. Even the difficult winter nights in Safed, with cold and snow, do not deter Natan and he comes to the street every week, for every shift, to meet the teens. He serves as an anchor for many teens and young men.



MICHAL OPPENHEIM | VOLUNTEER WITH "YOUNG MOTHERS" DROP-IN

Michal has volunteered as a mentor to a young woman from the young mothers at risk program for the past year and a half. At the outset, Michal volunteered in parent guidance, and we immediately understood that she is a wonderful woman with broad knowledge, and we recruited her to mentor a young woman, with set meetings once a week. Michal created a close and supportive relationship with the mother she mentors and is someone to turn to in every area of life. Michal is an inseparable part of building a future for this young woman and for the role of volunteers in the program. We are so fortunate!



ORLY TZIFSER | VOLUNTEER AT ALMA

Orly has volunteered at ELEM for nearly a decade. She began volunteering with mobile outreach in Netanya, and more than two years ago she came to Alma, the center for teen girls and young women in Petah Tikva. In her unique way, Orly has formed special connections with the young women. She accompanies them to medical treatment, during pregnancy, birth, and moving house. "We are so happy for the privilege of enjoying Orly. Her unique honesty, her positive outlook and wisdom, and her big heart that she brings to us at Alma."



SAYING GOODBYE TO ESTERIKA

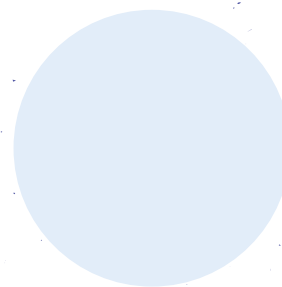
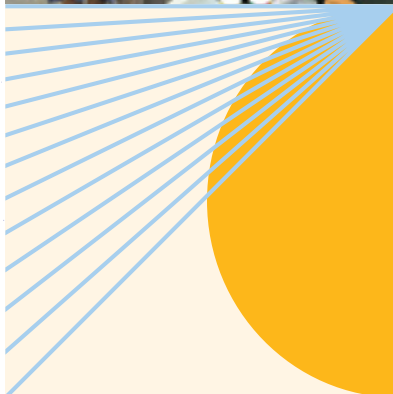
This year, we sadly parted from Esther Binnenstock, the longest-serving ELEM volunteer, who passed away. Esther, a Holocaust survivor who made Aliyah to Israel from the Czech Republic in 1944, volunteered at ELEM for 20 years and was beloved by all. Every day, she would come to the ELEM offices with a smile, magic, sharpness and a unique sense of humor. Age differences were never a barrier for her. During the pandemic, during closures and isolation periods, Esther continued to stay in touch with us, first of all expressing concern for the health and wellbeing of the street youth. ELEM was like a home for Esther, and she was like family to us. Thank you for all your giving, filled with magic and wisdom! We miss you.



HUMAN RESOURCES

DIRECTOR: LEAH PRIZANT ADLER

ELEM HAS 260 EMPLOYEES, WHO COME FROM DIVERSE PROFESSIONAL BACKGROUNDS – SOCIAL WORK, EDUCATION, PSYCHOLOGY, CRIMINOLOGY AND MORE. OUR EMPLOYEES COME FROM ALL OF ISRAELI SOCIETY – THE PERIPHERY, THE CENTER, FROM THE ARAB COMMUNITY, THE ULTRA-ORTHODOX COMMUNITY AND MORE.



260
ELEM
EMPLOYEES

ELEM is an organization that promotes equality, is led by women (CEO, president, and most of the organization's leadership), and among the staff, 75% are women.

As noted here in the annual report, 2022 brought changes to ELEM while realizing the organization's vision and mission. Following a strategic process, it was necessary to focus and update the organization, through changes, reorganization, and building, positioning the headquarters staff to support and assist the work in the field in light of a new organizational structure. The changes were conducted with transparency and open dialogue, based on the approach that the people of ELEM make the organization what it is – and they are the most important component in ELEM's success.

As we also noted above, this year we were pleased to welcome ELEM's new CEO, Tali Erez, and new COO, Danny Levit.



Special thanks to the 2022 ELEM staff, who give of themselves over and above on behalf of youth – with unending dedication, respect and love. They are the outstretched hand and the stabilizing anchor in the lives of our youth, they are the professionals and sometimes the only meaningful adult in the lives of these young people.



OUTSTANDING EMPLOYEES | 2022



YITZHAK REEM | MOBILE OUTREACH COORDINATOR, SAFED



SHIRA REGEV | MOBILE OUTREACH DIRECTOR, BAT YAM



LIMOR BASHIRI | MOBILE OUTREACH DIRECTOR, JERUSALEM



HAGAR TALMON | TEAM DIRECTOR, ALMA



RONI KUPERMAN | TEAM DIRECTOR, GALGAL



MORIAH SAPIR | CLINICAL THERAPIST, SEXUAL ABUSE



DUNYA SAKAS | CLINICAL THERAPIST, SEXUAL ABUSE



SHARONA SHASHALVILI | DROP-IN CENTER DIRECTOR, NOF HAGALIL



RESOURCE DEVELOPMENT TEAM



DROP-IN CENTER TEAM, NETANYA



NADAV FRIEDMAN AND MICHAL ZALUTI | CLINICAL THERAPISTS AND GROUP FACILITATORS FOR MINOR SEX OFFENDERS



"FROM DEPENDENCE TO INDEPENDENCE" TEAM

RESOURCE DEVELOPMENT DEPARTMENT

DIRECTOR: MERAV FEFFER



ELEM's resource development department is responsible for developing funding sources and raising the funds necessary to promote the welfare of teens and young adults at risk in Israel. The Ministries of Welfare and Education and the local authorities are meaningful partners in supporting ELEM, alongside businesses, Israeli and overseas foundations, and the general public, who donate each year to the organization's various fundraising campaigns.

In ELEM's 40th year, we are filled with gratitude for the donors, partners, the Friends of ELEM forum, and the many supporters who have accompanied our teens and young adults over these many years. Thank you for your generosity and engagement, in routine times and during emergencies.

The pandemic period left its mark on all branches of the economy. Like businesses, ELEM and other NGOs are struggling with a challenging economic situation. Following a strategic process, and out of a sense of social responsibility, we found it necessary to update the organization's focus, with required budgetary adjustments and planning a new organizational structure. Likewise, we have needed to find creative, unique fundraising activities.

RESOURCE DEVELOPMENT SPECIAL EVENTS | 2022

FLAGSHIP CAMPAIGN

In May 2022 we ran a successful flagship campaign, which is the main organizational fundraising effort, enlisting the public, business partners and many donors on behalf of ELEM youth. We want to thank everyone who participated in fundraising for the annual campaign.

During the campaign, ELEM publicized the song, "We are the children," which expresses the cry of the youth of the pandemic (with new words composed by Ephraim Sidon to Shmuel Hasfari's song "The children of winter 1973"). The song was recorded in a special clip with participation of leading child and teen stars, led and produced by Gitam BBDO IM marketing agency.

At the height of the campaign, ELEM presented the organization's annual report to the President of Israel, Mr. Isaac Herzog, at a moving event at the President's house. Nava Barak, ELEM's president, and then-CEO Dana Avraham presented the report. In attendance were ELEM youth, partners, and child and teen stars. A moving quote from the President's remarks: "As a society, we cannot disregard the circles of poverty, distress and risk. You are the leaders in rehabilitating and connecting youth at risk with boundless love and dedication. ELEM not only benefits and rescues youth, it profits the nation and society, and is an outstanding example for all of us."

ADOPTING ELEM MOBILE OUTREACH VANS – BY BUSINESS PARTNERS

In 2022, momentum began for a new and exciting partnership. More and more businesses enlisted to adopt and brand ELEM's mobile outreach vans with a commitment of several years of support. Branding the outreach vans is integrated with volunteering on behalf of youth by company employees who meet the coordinators and volunteers in ELEM's street outreach.

In the past year, Nova, Amdocs, Bank Discount, Bank Leumi, and Bank Yahav adopted mobile outreach vans for a period of two years.

ELEM ANNUAL FUNDRAISING EVENT

At the end of 2022, ELEM held its annual fundraising evening, with about 1,000 partners, donors, staff and volunteers.

Participants in the successful and moving event, at which nearly two million shekels were raised for ELEM's mobile outreach vans, included Shlomo Yanai, ELEM chair, Nava Barak, ELEM president, Tali Erez, ELEM CEO, and leaders of banks and other economic sectors. The volunteer emcee for the event was the actor, Amos Tamam. Assaf Amdursky, Shlomi Shaban and Yael Kraus performed together, "Songs from The High Windows." The event's main sponsor was Chevron. **The Friend of ELEM award was presented to the president of the International Fellowship of Christians and Jews, Yael Eckstein.** An ELEM graduate shared her personal story which did not leave a dry eye in the audience.

The event marked the festive opening of ELEM's 40th year. Ann Bialkin, ELEM's founder, came from the United States in honor of the occasion.

BANK HAPOALIM EXHIBITION

In December 2022, ELEM took part in Bank Hapoalim's annual exhibition, in its 22nd year. The wonderful exhibition was a salute to Israeli artists, and was dedicated to three organizations serving youth at risk, including ELEM. The income from the exhibition was donated by the bank, through its Social Banking Center. Mr. Ruben Krupik, chairman of Bank Hapoalim, spoke about youth in distress at the event: "Youth who do not encounter opportunity – teens who need opportunity and guidance for life. A business organization that doesn't adopt a social mission, in the end will lose itself." The exhibition was attended by Bank Hapoalim CEO Dov Kotler, director of the Social Banking Center, Naama Halevi-Peer, Philanthropic Foundation manager Samar Bashara, the artists who donated their works, and a large audience who purchased the artworks as donations. ELEM is grateful to Bank Hapoalim for this welcome initiative.

BUSINESS COOPERATION AND VOLUNTEERING

In 2022, there was an increase in volunteer activities by businesses in ELEM's various projects throughout the country such as: renovating buildings; cooking Shabbat meals; fun days; tournaments and soccer games with youth and more. One unique collaboration was a pop-up café at the Tel Aviv port with Elite Turkish coffee that took place in July, with all proceeds donated to ELEM.

FRIENDS OF ELEM FORUM

The Friends of ELEM forum expanded its ranks this year, connected ELEM to additional businesses and held a number of important meetings. At one of the events, members of the Forum met with ELEM graduates and staff, who moved those present with their stories, such as the graduate who related: "It is impossible to heal a soul so quickly. What is certain is that it always starts with connection, with knowing that there is someone who cares about me. That there is value to my life." Thank you to the forum members who dream and make dreams come true for our youth.

MEDIA COVERAGE

This year too, ELEM is positioned as a leading organization for youth at risk, with hundreds of media items, posts and stories on social media, which received hundreds of likes and responses. The exposure centered on key issues on the public agenda regarding the situation of youth in Israel and shone a spotlight on the population at risk on the margins of society. ELEM staff and volunteers received media exposure and ELEM teens and young adults shared their inspiring stories. In addition, there was media coverage of the involvement of businesses in activities on behalf of youth – events, adoption of mobile outreach vans, and businesses volunteering in different projects.

Nava Barak, President

Nava Barak, who has served as president of ELEM for 27 years, sees the nonprofit organization as her calling.

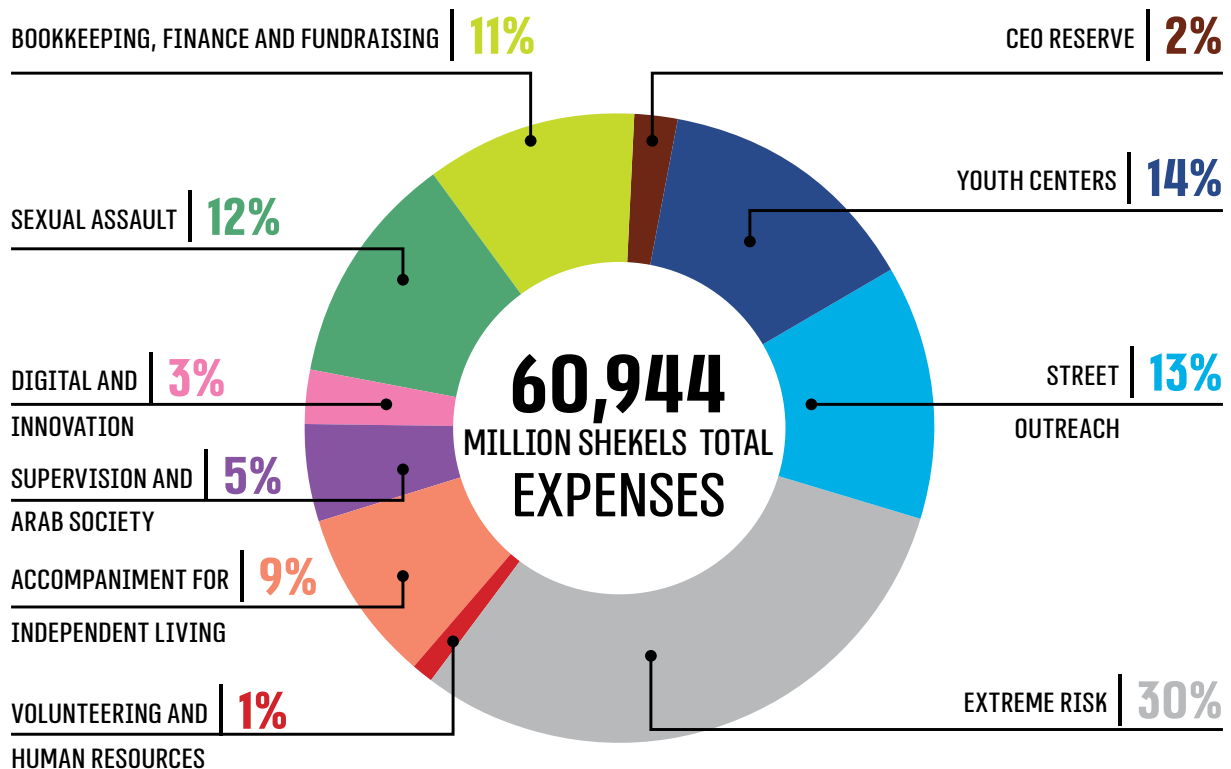
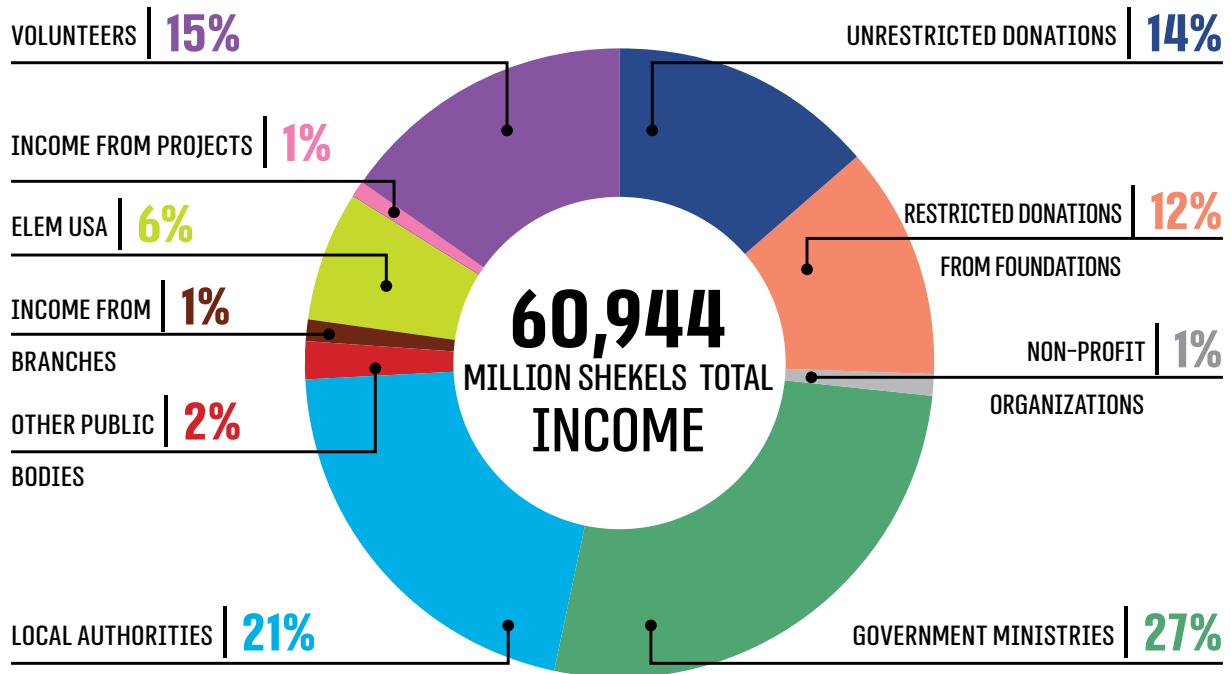
ELEM values Nava's dedication to the organization and to raising public awareness of the plight of at-risk teens, her hard work to represent ELEM in Israel and abroad and to strengthen ELEM's ties to state and local authorities. Nava has worked tirelessly to expand ELEM's circle of donors in both the business and philanthropic sectors.

ELEM staff, volunteers and teens, are always close to Nava's heart. Community involvement, volunteerism and especially in changing the lives of vulnerable teens have always been Nava's core values.

ELEM wishes Nava continued good health and opportunities to make a difference.



ORGANIZATION BUDGET



KEY PARTNERS AND SUPPORTERS

Ann Bialkin and the Bialkin Family Foundation



גברת ומר ורדה ובעז דותן



DM Charitable Trust

The Harry and Jeanette Weinberg Foundation

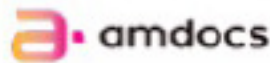
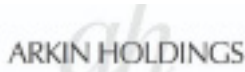


הבית של דורון

עו"ד צבי אגמון



קרן בוקסנאום נטע וליז



Eliselda Charity Foundaion

מנחם שלי



Todd and Yadira Patkin



גברת ומר אהובה ושלמה ינאי



The Maurice and Vivienne Wohl Philanthropic Foundation



Iranian American Jewish Federation of New York, Inc.



Lenore Ruben



נדב גרינשפון



Robert Meyer



קרן קאהן



Jack and Anita Saltz Foundation



Jeffrey A. Altman Foundation Inc.



A HUGE THANK YOU FROM THE ELEM FAMILY



Presenting ELEM's annual report to the President of Israel



ELEM at an introductory meeting with Minister of Welfare Ya'akov Margi



Dov Kotler, CEO of Bank Hapoalim, and Ruben Krupik, bank chairman, with Nava Barak, president of ELEM, at the Bank Hapoalim exhibition



Meir Cohen, former Minister of Welfare, visiting Alma



Electra at Hanukkah candle lighting with youth from Rehovot drop-in center



Dedication of the Bank Discount outreach van with Shaul Kobrinsky, bank chairman



Former Minister of Welfare Meir Cohen with Nava Barak at the ELEM conference



Nova outreach van in Or Yehuda



Naama Halevi-Peer, director of the Social Banking Center and Samar Bashara, Philanthropic Foundation Manager with Tali Erez, ELEM CEO and Petia, an ELEM graduate, at the Bank Hapoalim exhibition



Ministry of Welfare and Petah Tikva municipality, visit to Alma



Presenting the ELEM annual report to the President of Israel and his wife



Ruben Krupik, chair of Bank Hapoalim, with Nava Barak, Tali Erez and Shalom Zinger



Chairs of ELEM and Ayelet Shiloh Tamir, Director General of the International Fellowship of Christians and Jews, at a ceremony presenting the Friend of ELEM award to the fellowship at the annual fundraising event



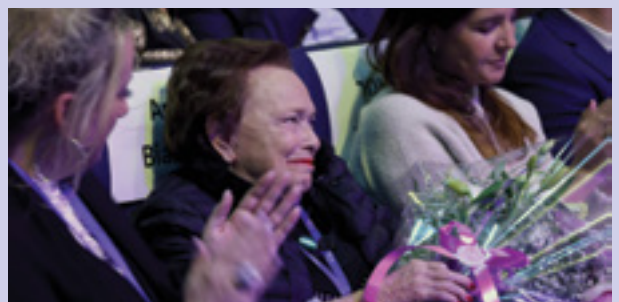
Donation of tablets from Amdocs for use in outreach vans in Nazareth and Ofakim



Binyamin (Bini) Zomer, vice president for regional affairs and partnerships at Chevron, with Nava Barak and Tali Erez



Dr. Samer Haj Yehia, chair of Bank Leumi, with Nava Barak and Shlomo Yannai



Ann Bialkin, founder of ELEM, at the annual fundraising evening



IMPACT REPORT | 2022

Authors: ELEM staff | **Editing:** Sharon Levin; Natasha Dornberg, ELEM
Translation: Gail Diamond | **Photos:** ELEM staff, volunteers and partners; GPO; Itzik Biran;
Efrat Saar; Aviv Gottlieb; Tzuri Fatal; and more