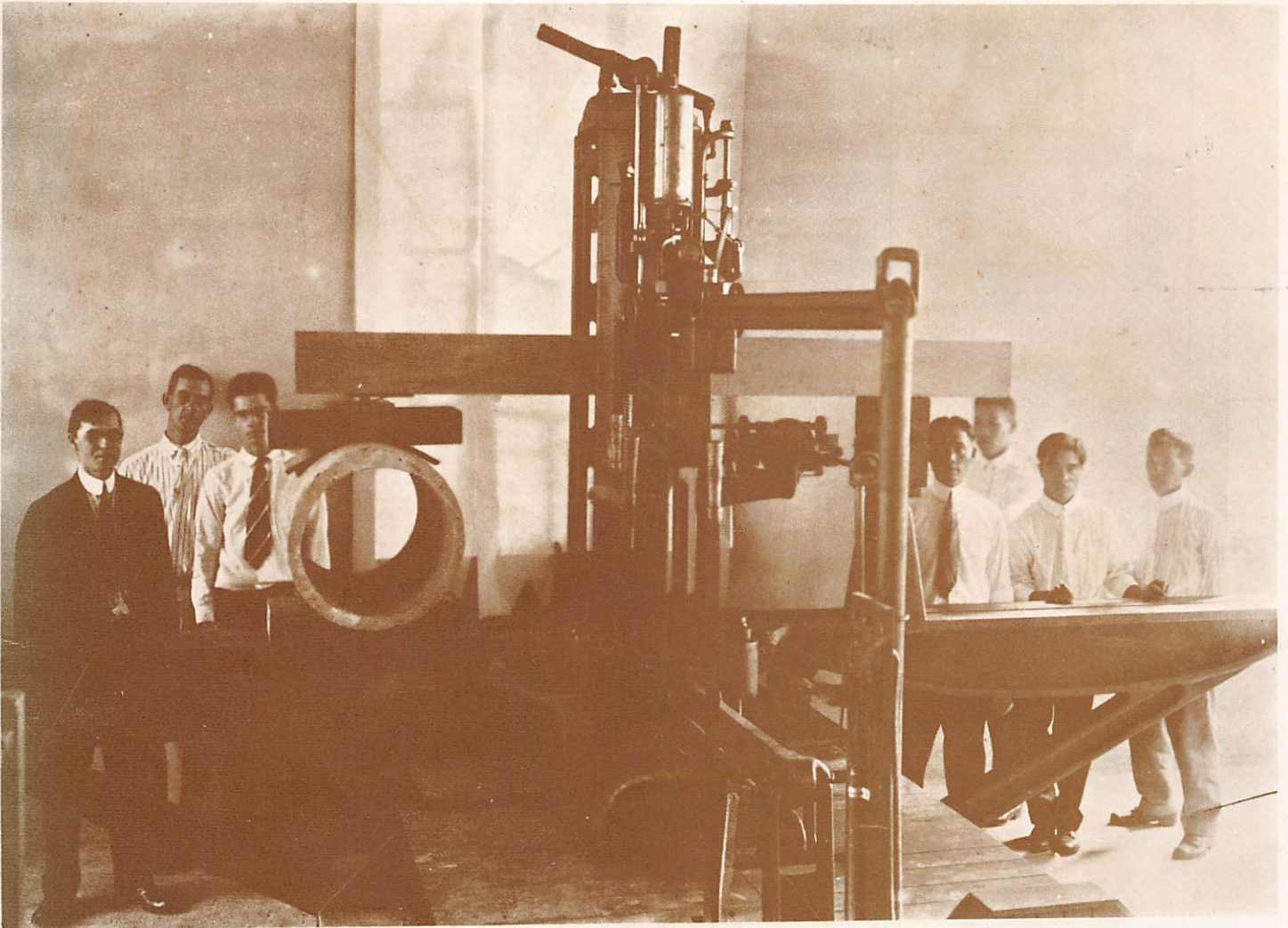


College of Engineering

University of Hawaii at Manoa
1907-1982

A Record of its History and
its Alumni





UNIVERSITY OF HAWAII • HONOLULU, HAWAII 96822

THE PRESIDENT

As this publication clearly shows, the College of Engineering at the University of Hawaii has had a sizable impact upon this institution and especially on the people of these islands. I am proud to have my own associations with this historic part of our University. I hope you will share that feeling of pride as you read through the pages that follow.

Sincerely yours,

A handwritten signature in dark ink, which appears to read "Fujio Matsuda". The signature is written in a cursive style.

Fujio Matsuda

AN EQUAL OPPORTUNITY EMPLOYER

COVER: This is a picture of a test of pipe in the old Reihle Universal Testing Machine; the first important piece of Engineering laboratory equipment to be obtained by the College of Agriculture and Mechanic Arts. It was installed in the Engineering Materials Laboratory around 1915.

College of Engineering

A Record of its History and
its Alumni



University of Hawaii at Manoa
1907-1982

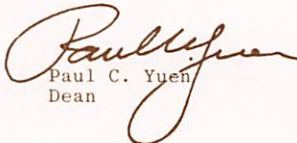


University of Hawaii at Manoa

College of Engineering
Holmes Hall 240 • 2540 Dole Street • Honolulu, Hawaii 96822

MESSAGE FROM THE DEAN

The history of the College of Engineering has been marked by change, not only in facilities--buildings, laboratories, equipment--but also in the material taught. Engineering subject matter is dynamic and engineering developments produce radical changes in the way we live. Some obvious examples of these developments are the telephone, television, and automobile. In the future extremely powerful but small computers will further revolutionize our lives, and engineers will help to bring about that change. Engineering schools like ours, which prepare future engineers to function as leaders in an ever-changing world, must also keep up with and help produce the new technology to enrich our lives.


Paul C. Yuen
Dean

AN EQUAL OPPORTUNITY EMPLOYER

ENGINEERING EDUCATION IN HAWAII

Engineering and agriculture share the distinction of being the progenitors of all higher education in Hawaii. The College of Agriculture and Mechanic Arts of the Territory of Hawaii opened in September 1908 in temporary quarters near Thomas Square. There were five regular students and four of them were engineering students but John Mason Young was the only engineer in a faculty of eleven members.

The College of Agriculture and Mechanic Arts changed its name to the College of Hawaii in 1911 and moved to the Manoa Campus. John Mason Young continued as Engineer of the College and taught approximately half of all the engineering courses. He also acted as Dean of the College when it had no president and as Acting President during the absence of President Arthur L. Dean. In 1920, after the College of Hawaii was reorganized as the University of Hawaii, Young became president of the Pacific Engineering Company, but he continued to teach part-time at the University, until he retired in 1938. For thirty years he taught structural design to all engineering seniors. As president of Pacific Engineering Company he designed and supervised the construction of some of the early buildings of the University. John Mason Young can truly be called the father of Engineering Education in Hawaii.

In 1909 Arthur R. Keller joined the College faculty as professor of civil engineering. Keller was a man of many talents and boundless energy. He even played football on the College of Hawaii team in 1911. He had a positive genius for wringing the maximum benefit out of every dollar in the meager budget of the College. The Legislature appropriated \$75,000 to build Hawaii Hall when the College moved to Manoa in 1912, but characteristically provided nothing for sidewalks, roads, and drainage. Keller concocted a project to test materials and methods of road construction to which the City of Honolulu contributed equipment, the Territory contributed materials and Keller, with his engineering students provided plans, supervision and materials testing. When the project ended the City and the Territory had valuable data for specifications for road construction and Campus Road had been paved at no cost to the University. The City planned a drainage system for a real estate development which would dump water onto College lands and flood them in heavy rains. Keller designed a better system to divert storm water to Manoa stream. Engineering students surveyed the route. Keller drew up finished plans, presented them to the mayor, and induced the City to adopt them, incidentally providing storm drainage for College lands.

Most of the money for operation of the College of Hawaii came from Federal Land Grant College appropriations. Only about one-fifth of the College income came from Territorial funds. The purposes for which Federal Land Grant money could be expended were restricted. Consequently, reasonably adequate funds for engineering instruction, and equipment of the engineering laboratory, were available even when Territorial appropriations for buildings and for liberal studies were stingy. Despite the emphasis of the College of Hawaii on agriculture, the engineering curriculum attracted the most students.

When the College of Hawaii moved to Manoa provision had to be made to house engineering laboratory equipment which could not be installed in Hawaii Hall. The Engineering Materials Testing Laboratory was the second permanent building to be built on the Manoa Campus. This single story concrete building with 3600 square feet of floor space was built at a total cost to the Territory of \$8,146. Still standing and in use, it probably represents the Territory's best bargain in public buildings.

The most important piece of equipment in the engineering testing laboratory was a 150,000 pound Reihle Universal Testing Machine, purchased second hand for \$800 before the College moved to Manoa. It was installed in the Engineering Materials Laboratory where it not only served its nominal function of demonstrating to engineering students the behavior of materials under stress, but it provided facilities for testing much of the construction material of Hawaii, including the concrete for Pearl Harbor dry dock. It was an object of general interest and curiosity. The minutes of the Board of Regents report one meeting of the Board that was delayed for an hour while the entire Board of Regents watched John Mason Young, and his engineering students test a large timber to destruction.*

In the beginning, curriculums in Mechanical, Electrical and Civil Engineering were offered, an ambitious program for a faculty of two professors. This caused little difficulty because the program of the first two years was common to all three curriculums and consisted largely of mathematics and general studies. Professor Donaghho, the one-man math department, taught all the math courses. The only engineering courses in the common curriculum

*See Kittelson: The History of the Hawaii College. Thesis for Master of Arts in History, September 1961.

of freshman and sophomore years were drafting and surveying. Wood-working, forge, and machine shops were also required until Mr. McTaggart, the shop instructor, died in 1918, after which shop work was no longer required. At that time it was also decided that the expense of equipment for laboratories in mechanical and electrical engineering was not warranted by the limited demand and the College offering in engineering was more realistically reduced to Civil Engineering only.

In the first graduating class of the College of Hawaii, in 1912 four degrees were awarded. One was in engineering, one was in agriculture, and two were in general science. The following year (1912-13) the total enrollment of the College was twenty-four regular students, of which ten were in engineering, four were in agriculture, one in home economics, and nine in general science. In addition there were 104 special students, not working toward degrees. In the eight graduating classes of the College, before it became the University of Hawaii in 1920, a total of only nine engineering degrees were awarded.

Under these conditions, junior and senior engineering classes were very small, a fortunate circumstance. As it was, Keller taught ten different engineering courses in a year and Young carried an equally heavy teaching load. Both engineering professors were involved in extracurricular work. Keller was a member of the Territorial Board of Health, a member of a commission to frame a code of sanitary regulations, a member of the planning commission, and on a board to design a sewer system for the City of Honolulu.

In 1915 Keller went on sabbatical leave and at the end of the year came back with two earned Master's degrees in engineering, one from M.I.T. and one from Harvard. In 1918 Keller was called to active duty as a captain in the Army Engineer Corps. World War I created many problems for the College of Hawaii. The Student Army Training Corps was more popular than the draft, and College enrollment increased by fifty percent to 68 regular students and 77 special students. Part of the engineering testing laboratory was turned into a SATC mess hall. Nevertheless Professor Young, with the help of temporary appointments from local engineers, managed to carry on, and graduated one engineer each war year. In 1920 when Keller returned from the war the College of Hawaii had become the University of Hawaii, and Keller became the first Dean of the College of Applied Science.

The College of Applied Science was responsible for curriculums in Engineering, Agriculture, Home Economics, and Sugar Technology. The College of Arts and Sciences, under Dean Arthur L. Andrews, was responsible for all liberal arts and science curriculums. These two colleges, with the Agricultural Experiment Station and the Agricultural Extension Service constituted the University of Hawaii until the College of Education was incorporated in 1930. For the 1919-21 biennium the legislature appropriated a

total of \$281,500 for the University (including \$142,000 for a physics, chemistry, and sugar technology building—Gartley Hall). This exceeded the total (\$279,000) appropriated to the College of Hawaii during the entire ten years of its existence. The University was off to a flying start. Enrollment promptly increased to 106 regular students plus 136 special students.

During the years between two world wars, the University steadily increased in stature. By 1940 the enrollment of the University was over 2000 regular students, already exceeding the most optimistic projections. The annual operating expenses of the University, including the Agricultural Experiment Station and the Extension Service, was about one and a quarter million dollars. The faculty numbered 142 individuals.

Engineering participated in this growth, but not proportionately. In 1928 four one-story concrete buildings of the Engineering quadrangle were built around the engineering testing laboratory, at the cost of \$64,971. This increased to 15,840 square feet the floor space assigned to engineering, although one of the four new buildings was used for many years as the University carpenter shop. In 1936 fourteen engineering degrees were awarded, but on the average, University graduating classes, between the two wars, included only about seven engineers each.

There were six engineers on the faculty during the 1930's but Engineering and Mathematics departments were combined and most engineers doubled in brass. John Mason Young taught structural design on a parttime basis. Ernest Webster was Dean of Student Personnel for the University and also taught engineering mathematics and surveying. Carl B. Andrews, chairman of the engineering department, carried a full load of courses. He was also a member of the Territorial Board of Engineering Examiners. The normal full-time teaching load was fifteen or sixteen semester hours. Russell Brinker, a young instructor in engineering, taught mechanical drawing, surveying, and mathematics. W. J. Holmes, also an instructor, who joined the engineering faculty in 1936 at an advanced salary of \$2400 per year, taught a mixed bag of physics, electrical engineering, mechanical engineering, civil engineering, and mathematics, varying each semester as the need arose. (One semester, in an emergency caused by the death of the regular instructor, he taught a course in sugar technology.) Alvin Hoy, a mathematician who had his office in the engineering quadrangle, taught all the calculus courses. Willard Eller, from the physics department, taught electrical engineering courses.

Arthur Keller was vice-president of the University as well as Dean of the College of Applied Science. He taught six or eight semester hours of engineering courses each semester. In addition he was a director of Queen's Hospital, and a member of the first Hawaii Housing Authority. With his life-long interest in public health, he pioneered University courses in nursing, including a program in public health nursing,

and a four-year curriculum in medical technology. His short figure, carrying a brief case full of books, hurrying across campus between meetings and classes, was a familiar sight to all engineering students of that period.

In 1940-41 there were 100 engineering students in the College of Applied Science. The curriculum in Civil Engineering required 150 semester hours of academic work compared with 122 semester hours required for a Bachelor of Arts degree. With the world at war, many engineering students wanted to take advanced ROTC and qualify for a Reserve Commission in the Army as well as a B.S. in Civil Engineering. Five years to complete these requirements was more nearly the norm than the exception.

The curriculum closely followed the Civil Engineering curriculums in mainland Land Grant College. Probably as a heritage of its development, a little more than the normal work in electrical and mechanical engineering was required. It was not always safe to judge the courses by the descriptions in the catalogue, as one instructor discovered. In a rash moment he agreed to take over Dean Keller's class in Contracts and Specifications one semester in the Dean's absence. When he got around to studying Keller's course notes he realized that, as the Dean had taught the course, it was more than a textbook course in the economics of cost estimates and the fundamentals of laws governing engineering contracts. Keller, who had a law degree in addition to his engineering degrees, also included a wealth of information on Hawaiian land laws, Hawaiian laws of water rights, statute law, and the case histories of local court decisions of engineering interest. In deep humility the instructor confessed to the Department Chairman (Carl B. Andrews) that he could not teach the course as Keller taught it. "Nobody else can, either" was the only sympathy he got from Andrews. It turned out to be one of the numerous occasions when the instructor learned more from the course than any of his students.

Before World War II, no girl student stuck with the engineering curriculum long enough to obtain junior status. Had any female met the entrance requirements for admission to the informal fellowship of the upper division engineering students, who owned the Engineering Quadrangle, a most embarrassing situation would have been created. When Keller designed the four new buildings of the Engineering Quadrangle he designed them for maximum space utilization and economy, with no corridors, no closets, and no plumbing. The only toilet south of Campus Road was partially concealed from public view in the storeroom of the engineering materials laboratory. To meet the standard academic provisions for four sexes (faculty men, faculty women, student men, student women) would have required a special legislative appropriation. It was not until 1939, when the Home Economics Building (Miller Hall) was built, adjacent to the engineers' domain, that the situation was alleviated.

The bombs that fell on Pearl Harbor disrupted the University of Hawaii. For nearly two months it ceased to function as a teaching institution. When it opened again Keller was Acting President, in addition to his other duties. Half the student body and a large share of the faculty had been drained off by the war effort. In 1942, however, fourteen degrees in Civil Engineering were awarded. Two years earlier, foresighted Keller had initiated a program of evening classes in Naval Architecture, taught by Pearl Harbor naval architects, to senior engineering students and recent graduates.** The design section of Pearl Harbor Navy Yard eagerly absorbed the graduates of the program, but the engineering department rapidly declined until there were only two engineers on the University faculty and only one degree in engineering was awarded in 1946.

In 1947 Keller retired from the University and Holmes, who had returned from war-time naval service, became the second Dean of the College of Applied Science. The College of Agriculture split off and became the fourth University College, leaving Applied Science with curriculums in Engineering, Nursing, and Medical Technology. The University had been crowded by 2000 students in pre-war years. When Congress passed the G.I. Bill, providing educational benefits for veterans, it was apparent that double the number of students would soon be clamoring for admission. In 1947 the legislature provided funds for an administration building (Bachman Hall) and a chemistry building (Bilger Hall) but even this inadequate building program would not provide usable space during the next three or four years. It was difficult for many to realize that the days of the little cow college, under the rainbow at the foot of Manoa valley were over.

A few nostalgic old timers wanted to restrict the University enrollment, particularly the engineering enrollment, until adequate faculty and facilities could be provided. Fortunately that view did not prevail. In the best Land Grant College tradition, the University determined that the generation that fought the war should not be denied equal educational opportunity, even if classes had to be held under the trees. It did not come to that, but for awhile the facilities were minimal and the faculty overworked and underpaid.

Joseph F. Kunesh, a Honolulu engineer who had been Director of the Hawaii Territorial Planning Board's Historic Inventory of Resources of the Territory in 1939, joined the University staff. At first as University Engineer and then, for four years, as Dean of the College of Applied Science. He performed the herculean labor of acquiring an entire surplus Army field hospital for the University and

**He also organized a Federally sponsored course in aviation as a part of the national preparedness program and at the age of 58 took flight training with his students.

transporting about ninety barracks-type wooden buildings to the campus. In any available open space he set them up and converted them into offices, classrooms, work shops, a cafeteria, and apartments for faculty housing. They were equipped largely with surplus army furniture. This made it possible to more than double the University enrollment. It was confidently expected that within ten years these shacks could all be torn down and replaced by proper permanent buildings. In this, the year of our Lord 1975, some of them are still in service where Kunesh placed them.

Mae Nakatani, the first woman ever to earn an engineering degree from the University of Hawaii graduated in 1950. She, with 52 male classmates, constituted the largest class in engineering up to that time. On 1 October 1951 the civil engineering curriculum was accredited by the Engineers' Council for Professional Development. In a period of only four years the University graduated as many engineers as it had graduated in the previous forty years. Moreover, what had been regarded as a peak of engineering graduates turned out to be no more than a brief plateau before the trend turned upward again. For a year or two an artificial limitation was imposed on freshman engineering enrollment, but fortunately this idea was short-lived. Statehood, air travel, a new engineering faculty of bright young men, and national accreditation of the engineering curriculum broke down inherent insularity and engineering education in Hawaii became an integral part of engineering education in the United States. Some Hawaii engineering graduates went to mainland colleges for post graduate work. Mainland organizations sent recruiting teams to Hawaii to hire graduating seniors, and what had threatened to be a surplus of engineers quickly turned into a shortage.

Increasing engineering enrollment made it desirable to broaden the engineering program. In 1953 the Hawaiian Electric and the Westinghouse Electric companies gave the University the equipment for a heat power laboratory. This made it possible to increase course offering in the mechanical engineering field and enabled the University to offer a curriculum in General Engineering in addition to Civil Engineering. Further expansion of the engineering program had to be deferred because of very limited University budgets.

The academic year ending in 1953 was the first post war year that the Engineering Department and the Mathematics Department were separated administratively. The expenditure of the University that year, for practically everything except self-supporting auxiliary enterprise, totaled \$4,095,030. Engineering's share of this was approximately \$52,990 for personal services, \$938 for supplies and \$506 for equipment. A low expenditure for equipment in any one year, however, could be misleading. The legislature appropriated funds on a biennial basis. If the purchase of an expensive item of equipment, such as a surveying instrument or an attachment for the

Olsen testing machine, was budgeted the expenditure would be deferred until the last quarter of the biennium. This unbalanced the equipment expenditures between years but provided ready money which could be used to cover expenses which might be incurred by an unexpected casualty early in the biennium.

One evening John Evans, Scott Daniel, Chuck Engman and the Dean were all in the materials testing laboratory testing a concrete beam on the old Reihle testing machine. The beam was too big for the machine and John Mason Young was probably restless in his grave. Suddenly, with a loud report, one of the heavy cast iron beamsupport arms broke clear across.

The next morning Honolulu Iron Works estimated that a new casting would cost \$2100. This was over twice what the machine had cost and was more than the whole equipment budget for the biennium. The prospects for making the old machine available for the remainder of the year's instruction schedule appeared to be remote. Then Island Welding Company came to the rescue and, for about \$200, repaired the break by brazing. The next week the Reihle was back in service as good as ever—well, almost as good. From then on it carried the golden scar of its wounds and had to be treated with respect for its age and infirmities. In 1969 a new structures laboratory was put into service and the engineering materials laboratory became a print shop for student publications. After rounding out sixty years of service to the University the Reihle Universal Testing Machine was transferred to Honolulu Community College.

When the civil engineering curriculum was accredited, a student chapter of the American Society of Civil Engineers was organized with Professor J. Gardner Bennett as faculty adviser. This development increased the interchange between the University and professional engineers in Hawaii. In the next few years there were also a number of administrative changes in the University that indirectly affected engineering education. When President Gregg M. Sinclair retired Paul S. Bachman became President of the University, Holmes became Administrative Vice President and William M. Wachter became Dean of the College of Applied Science. In 1958 the School of Nursing achieved college status with Virginia Jones as the first Dean. When Nursing and Medical Technology left the bed and board of the College of Applied Science only engineering remained. The name was then changed to the College of Engineering. About that time also Wachter took over the administrative vice presidency and Holmes became Dean of the College of Engineering.

Meanwhile, in step with changes in curriculums in mainland universities, a gradual change was taking place in the civil engineering curriculum. More engineering science courses were included in the curriculum at the expense of pre-calculus mathematics, surveying, and some of the electrical and

mechanical engineering courses previously required in the civil engineering curriculum. A Master's degree in engineering, with professional experience and a professional engineer's license, had been considered adequate qualification for a faculty appointment but higher academic qualification now became desirable. Dr. Shigeo Okubo was the first member of the engineering faculty with a doctor's degree. He was followed by Fujio Matsuda, Stephen Lau, Arthur Chiu, Mateo Go and others until about half of the faculty had doctor's degrees in their fields. The faculty was also enriched by a system of visiting professors. President Sinclair had obtained a generous grant from Carnegie Foundation for a succession of distinguished visiting professors, spread out over several years, and engineering received its fair share. Visiting professors in engineering included L. E. Grinter, Charles Norris, Harold Martin, Henry Gomborg, and Wilbur Meserve, each of whom taught engineering classes, often scheduled in the late afternoon so they could be taken by practicing engineers as well as senior engineering students.

The year Hawaii became a state (1959) was also a banner year in the development of the College of Engineering. Keller Hall, a classroom and faculty office building for engineering and mathematics, was completed. This made space available in the old engineering quadrangle for electrical engineering laboratories. It thus became possible to offer a curriculum in Electrical Engineering, a development that had been too long deferred by lack of space and lack of funds. The engineering enrollment that year numbered 761 students. There were 71 Bachelor of Science degrees in Civil Engineering and 14 in General Engineering awarded in 1959. The University expended in that year, for Education and General, \$10,563,532. Engineering's share was \$277,263, including an extraordinary equipment budget of \$52,464 to provide for equipment for the new electrical engineering laboratories. Keller Hall cost \$632,211 and the book value of all University buildings, great and small, was then \$10,305,052.

Under the direction of Ralph Partridge at first, and later under Paul Yuen, the electrical engineering curriculum developed rapidly. In 1961 the first group of 15 electrical engineers graduated. The next year (1962) the Engineers' Council for Professional Development accredited the electrical engineering curriculum. A curriculum in mechanical engineering was first offered in 1960 and in 1963 the first group of three mechanical engineers graduated.

Until then organized research and graduate instruction had been neglected due to the urgent need to concentrate on the development of the undergraduate programs. Master's degree programs in civil engineering and in electrical engineering were authorized by the University in 1963. A Hawaii Engineering Experiment Station was authorized in 1962 and Dr. Fujio Matsuda was appointed the first Director. Before the program could get off the ground, the Governor of Hawaii (John Burns) requested the

service of Dr. Matsuda as Director of the State Department of Transportation. As it was expected that Matsuda would return to the University in two years, the position of Director of the Engineering Experiment Station remained unfilled during that period. Research studies, financed by various agencies, were conducted by some faculty members but the Experiment Station during that time was a paper organization. Dr. Matsuda remained away from the University for ten years and when he returned he became the first University of Hawaii alumnus and the first engineer to be President of the University of Hawaii.

In 1964 the College of Engineering was organized with four departments: Department of Civil Engineering, Dr. Arthur Chiu, Chairman; Department of General Engineering, Don Avery, Chairman; Department of Electrical Engineering, Dr. Paul Yuen, Chairman; and Department of Mechanical Engineering, Dr. Willem Stuiver, Chairman. Nicholas Corba was Assistant Dean. It is noteworthy that since World War II, through all the changes of organization and personnel, there have been only two secretaries of the College, Matsue Miyamoto succeeding Hazel Hee when the Administrative Vice President's office was organized. Between them these two secretaries have been acquainted with about ninety-five percent of all the engineering graduates since engineering education began in Hawaii.

In 1965 Holmes retired as Dean of the College of Engineering and Dr. John Shupe became the new Dean. The University was growing rapidly. That year, the University expenditure (including East-West Center) was over thirty-two million dollars. The buildings of the University were valued at over thirty million dollars on a cost basis. The expenditures for the College of Engineering that year were over five hundred thousand dollars. One hundred and eighteen engineering degrees were awarded during the year. Dean Shupe arrived just in time to take over the reins as the College of Engineering began the most interesting period of its development.

Prepared for the
Hawaii Bicentennial Encyclopedia, 1976
by Wilfred J. Holmes, Dean Emeritus

An Outline of Recent College History

1965-1981

A number of significant changes occurred in the late 1960's in college programs and activities. The Department of Ocean Engineering was established as a graduate program in 1966 — one of the first such programs in the U.S. Doctoral programs were subsequently approved for both electrical and ocean engineering with the first Ph.D. graduated in 1969. These continue as the only two doctoral degrees offered by the College, all the departments grant the M.S. degree. The James K.K. Look Laboratory of Oceanographic Engineering was transferred to the College from the U.S. Army Corps of Engineers in 1966. The Look Laboratory has been a major applied research facility for coastal engineering.

The Center for Engineering Research was created from the Engineering Experiment Station in 1965. Research activity related to state needs has been the Center's primary focus. Extramural support has been sustained at over \$1,000,000 annually for studies in coastal engineering, radio sciences, information and computer sciences, alternate energy, and pollution control. Energy research has increased in scope and significance so that a separate University research unit was formed to be its focal point, the Hawaii Natural Energy Institute.

The late 1960's was the planning period for a building complex to house all engineering activity on the Manoa Campus. Two buildings were planned for a site at the corner of Dole Street and East-West Road. Groundbreaking for the first building or Phase I took place on November 3, 1969. The building was completed and occupied in mid-1972. The building was officially named Holmes Hall in honor of Dean Emeritus Wilfred J. Holmes.

Holmes Hall provides space for the Dean's Office, the three undergraduate departments and most of their faculty and the Center for Engineering Research. Laboratories and classrooms for nearly all of the Civil, Mechanical and Electrical Engineering programs are housed in Holmes Hall. Three programs closely associated with engineering, Marine Programs, the Water Resources Research Center, and the Hawaii Natural Energy Institute, are also housed in Holmes.

In moving into Holmes Hall, the College vacated the old Engineering or Young Quadrangle and most of Keller Hall. Offices for the Department of Ocean Engineering remain in Keller as well as a few faculty offices, principally for Civil Engineering. Phase II of the planned engineering complex was to provide classrooms, auditoriums, and offices for the remainder of faculty and staff, however, construction has been postponed for the foreseeable future.

The decade of the 1970's saw a number of administrative, organizational, and programmatic changes in the College. Some reorganization of the College occurred in 1973 with the elimination of the Department of General Engineering. The faculty of

that former unit were transferred to new academic homes among the Civil, Electrical, and Mechanical Engineering departments, with the lower division course offerings similarly reallocated.

At the instigation of the General Contractor's Association, and with initial funding support totally from the Association, a curriculum in construction engineering was added in Civil Engineering. This addition has broadened the scope of CE education and made a direct contribution in professional staffing of Hawaii's construction industry.

The Electrical Engineering curriculum has been restructured extensively in the computer and electronics areas in an effort to maintain currency with a rapidly changing technology. The curriculum now provides an excellent foundation in computer architecture and solid state devices.

The College is partial beneficiary of an \$800,000 gift to the University by Coral Industries to fund a chair in Alternate Energy research. The chair holder will have a joint appointment within the Hawaii Natural Energy Institute and in Mechanical Engineering. This will sharpen the focus of both energy research and education in the College.

Through the inspiration and involvement of Drs. Patrick Takahashi, Joel Fox and others, the Engineers Council of the University of Hawaii (ECUH), the coordinating body for student professional and honor societies, has conducted an Open House in Holmes Hall each year since 1973. The Open House, or Expo as it has sometimes been named, is a showcase of student projects, displays, and contest organized and managed by the ECUH. The function has served to initiate thousands of high school and younger students as well as the general public to engineering education and achievements.

Finally, the most recent period has witnessed a number of major personnel changes in the College's administration. Nicholas Corba, Assistant Dean since 1960, retired in 1978. Dr. John Shupe, Emeritus Dean Holmes' successor in 1965, accepted the post of University Coordinator of Energy Research in 1980. After a lengthy search, a new Dean was chosen from among the College's faculty; Paul Yuen, Professor of Electrical Engineering, assumed the Dean's position in late 1981.

The present period is critical for the College as it is for all engineering schools. Increasing enrollments reflect the interest in engineering studies due to employment availability and higher starting salaries. Industry beckons engineering faculty with attractive salary offers as well. The 1970 decade was marked by budget-tightening which had a detrimental impact on equipment acquisition and upkeep. The problems thus facing the College are many, however, so are the opportunities.



Hazel Hee and Matsue Miyamoto, secretaries whose careers successively span the recent history of the College.



Sydney Furuya-Austin, Student Services Secretary, the first contact person for the new engineering student since 1964.



The first woman engineering graduate, Mae (Nakatani) Nishioka, Class of 1950, currently in Facilities Management at the UH Manoa campus.



Dean Paul congratulates Alvin Satogata, winner of the first College of Engineering golf tournament. Tournament chairman Harold Hamada, Professor of Civil Engineering holds the winners' plaque.



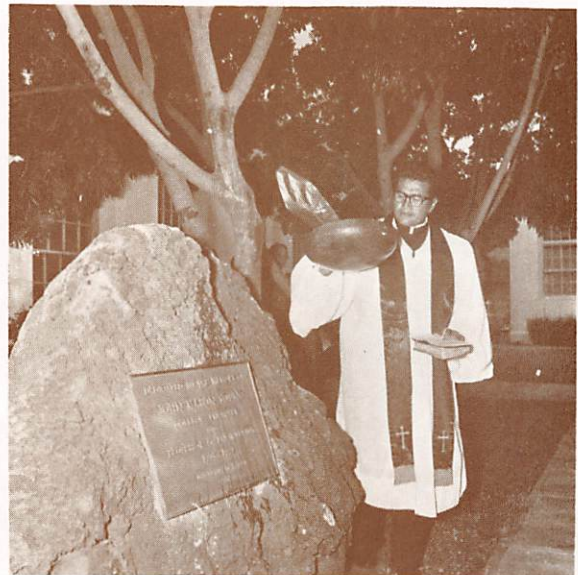
The Old Materials Testing Laboratory, the first engineering building and the second permanent building on the Manoa Campus, completed about 1915.



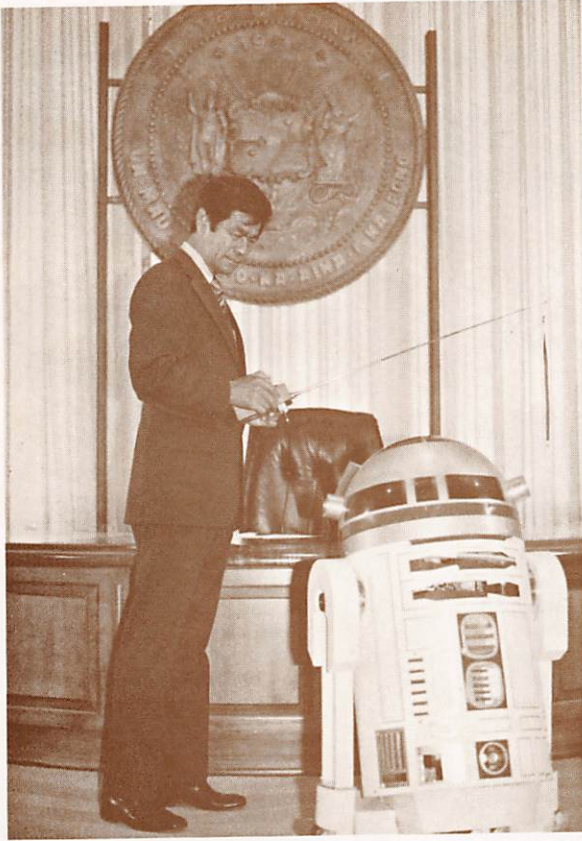
Keller Hall, the first building for the College of Engineering, completed in 1961, now housing the Mathematics and Information & Computer Science departments and the University's Computing Center.



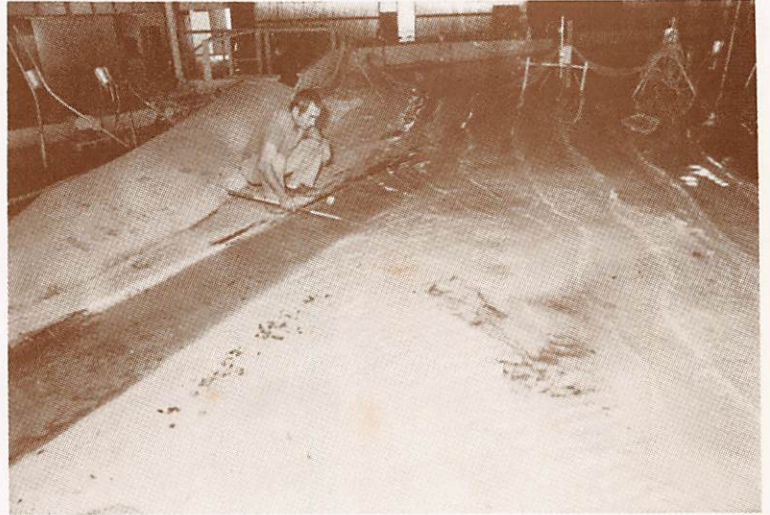
Holmes Hall, the present home of the College of Engineering, completed in 1972.



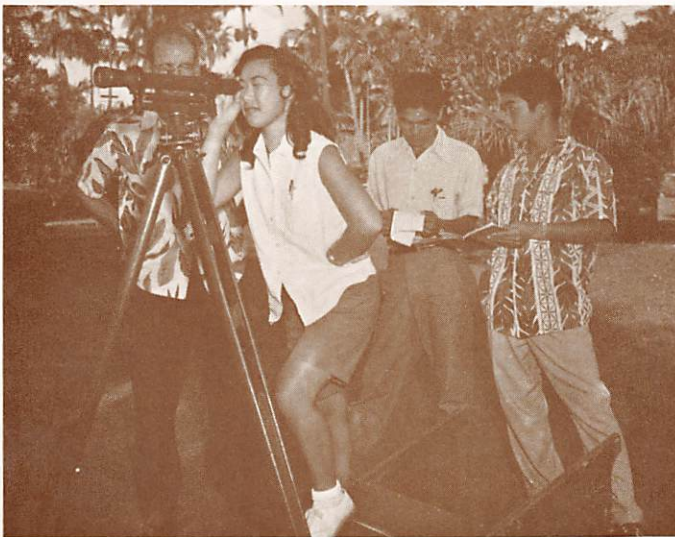
Dedication of the Young Quadrangle in 1955. The Engineering Quadrangle, renamed after the first engineering faculty is home today to the campus publication services.



MeToo/D2 meets Governor George Ariyoshi to kick off the 1978 Engineering Expo.



The Model Basin at the James K.K. Look Laboratory, the only University of Hawaii facility named in honor of one of its engineering alumni.



Maxine Yoshimoto surveying the campus about 1957.



Mechanical Engineering Professor Joel Fox ready to fire the furnace in his research lab, a hot example of student-faculty interaction.

ENGINEERING ALUMNI

The first engineering degree graduate was F. T. Yong in 1912. Since that time over 3000 men and women have attained the B.S. degree in engineering at the University of Hawaii. The first woman graduate was Mae Nakatani in 1950. Women now constitute about 15% of the student body and are represented in each department.

The following list includes all of our B.S. graduates by academic year. This listing constitutes the best available information in the College's records. If there are any errors, omissions or other discrepancies, please notify the Dean's office in order that the records may be appropriately updated.

1911-12 Yong, Fook Tong	Kurio, Howard H. Mau, Francis S.K. Penhallow, David P.	Sakai, Peter H. Suzuki, Francis T. Tsumoto, Yoshihiko F. Wong, Walter C.	1939-40 Aona, Francis K. Hara, Shoichiro Louis, Leighton Pyo, Jacob Tam, James S.K. Wong, Alfred J.Q.
1912-13 Tracy, Edward R.	1927-28 Ching, Hung Wai Jensen, Jorgen P. Lee, Kong Hui Myatt, John C. Okamoto, Toshinaga	1934-35 Ching, Larry F.C. Choy, Robert H.C. Hayashi, Hideo Higaki, Bunji Hirota, Osamu Inaba, Yoshio Kunimoto, Yoshio Nahm, Matthew M.T. Pang, Richard Y. Sone, Masao Takumi, Kenzo Tomonari, George Y. Tsuji, Yoshiharu	1940-41 Harada, Masato Hayama, Kiyoshi Izuta, Shigeyuki Lepine, Melvin E. Morita, Yoshio Peterson, Howard Sunn, Franklin Y.K. Wong, Kai Fong Young, Hung Joong
1913-14 Barnhart, George H.W. Lemke, Paul G.L.	1928-29 Cheatham, Orme E. Giles, Alfred O. Lum, Ah Chew Ozaki, Paul M. Smith, Percy E. Suzuki, Edward K. Swezey, Joseph A. Yamauchi, Masami	1935-36 Arledge, Arthur E., Jr. Furuhashi, Masao Kawakami, Sakai McKaig, Warren L. Mendonca, Adolph J. Nakahara, James M. Nakatani, Minoru Tsutsumi, Kentaro Uyeno, Ray M. Wagner, Henry J., Jr. Wai, Francis K. Wong, Benjamin Y.W. Yankoff, Victor I. Yap, Arthur A.C.	1941-42 Akiyama, Kenneth K. Arakaki, Yasuo Chee, Hon Hoong Chu, Guy Chu, Hary S.Y. Chun, Raymond K. Harano, Tetsuo Izumi, Tsutomu Ja, Melvin F.H. Kurio, George S. Ohata, Robert O. Siu, Kwong Yim Tsuji, Albert M. Yabusaki, Hisao
1914-15 Imai, Tomoso	1929-30 Chang, Bung Tong Hamada, Koichi Hee, Wah Ching Iwamoto, Hideshi Kawamura, Kenichi Sato, Kenneth K. Ting, Thomas A.	1936-37 Carmichael, Cecil S. Inouye, Ralph S. Loo, Ah Chun Stevenson, Robert L. Yee, Albert Y.L.	1942-43 Brier, Stewart D. Young, Ernest Y.H.
1915-16 Goo, Richard M.S.	1930-31 Awaya, Kaichi Kaaua, Edward S. Nogawa, James Sakamoto, Shuichi Shimogawa, Shigeru Tsugawa, Masaru	1937-38 Ahrens, Roy Chang, Kwan You Chock, Albert C. Clark, George V. Ho, Ah Leong Ho, Tim Lau, Hing Chock Leong, Ah Sum Stewart, Harry K. Yamanaga, George Yee, Jewett C. Yee, Philip K.H.	1943-44 Inada, Naoto Kashiwagi, Shizuo Luke, Charles W.W. Lum, Albert J.I. Miyake, Hiroshi Tom, Albert Q.Y.
1916-17 Hicks, Leslie A.	1931-32 Ching, Quan Yuen Chun, Cho Hen Lee, Robert L.B. Leong, Walsh S. Miyake, James H. Nakamoto, Katsumi Shimada, Louis N. Tyau, Yuen Fong	1938-39 Hori, Rijo Quon, Bung Yuen Reid, Keith C. Taniyama, Jack K. Yoshida, Tatsuki	1944-45 Pang, Dat Quon
1917-18 Hee, Tai Bun	1932-33 Fujita, Francis I. Lau, Thomas C.S. Obayashi, Tsuneo Okada, Stephen T. Park, Edward Van Orden, Herbert G.		1945-46 Shibano, George
1918-19 Wung, En Leong	1933-34 Aihara, Kenji Frazer, George P. Fruto, Lorenzo C. Hu, Wing Chung Jenkins, Lucius F. Kobatake, Gilbert D. Matsumoto, Walter T. Omori, Kenji		1946-47 Mau, Francis Suyama, Harris Watson, Walter O., Jr.
1919-1920 Ho, Elbert D.W. Pong, Ernest K.T.			1947-48 Chun, Paul Y.C. Fujii, Reynold T. Higa, Jinji Hirono, Howard M. Kaneshige, Lincoln T.
1920-21 Kealialio, Daniel			
1921-22 Chang, Peter Y.T. Kanahele, Francis A.H. Suzuki, Keiji Takemoto, Suematsu			
1922-23 Searle, Clarence C. Wilson, William S.			
1923-24 Chang, Peter T. Hirashima, Kazuo B. Keppeler, Herbert K. Koike, Tsuneo Matsuki, Henry Y. Morimoto, Hiroshi W. Omura, Shizuo Tani, Edward M. Wong, Sum			
1924-25 Mori, Takeshi Tanimura, John M.			
1925-26 Hartman, William A. Makino, Kazumi			
1926-27 Eremeef, Vasili S. Kaaua, Archibald S. Keala, Samuel L.			

Lum, Richard W.K.
Morita, Katsumi
Odo, Calvin Y.
Pai, Jack W.H.
Takano, Tadashi

Wong, Rodney K.F.
Yamaguchi, Harold T.
Young, Thomas H.T.
Yuen, Seung Fa

Munemasa, Harry I.
Nakashima, Takao
Nip, Willard H.W.
Okita, Herbert K.
Okoga, Lurthier T.
Osa, Thomas S.
Park, Herbert C.W.
Rokuhara, George
Runquist, Joseph J.
Shimabukuro, Roy S.
Shimizu, Kazuto
Sunada, Masaru
Taam, Samuel Y.S.
Taba, Kiyoshi
Takahashi, Stanley K.
Tamura, Masaru
Tanaka, Eiichi
Tarumoto, Kazumi
Tokunaga, James H.
Tom, William C.K.
Valenciano, Santos
Wong, Stanley
Yamashiro, Seiko
Yamashita, Raymond
Yee, Wilfred Y.S.

Ikeda, Milton H.
Ishigo, Susumu
Iwamoto, Roy M.
Koike, Ezra T.
Kumada, Richard A.
Miura, Evelyne Y.
Miyahira, Wallace
Mori, Kenneth Y.
Nishimura, George H.
Numa, Charles S.
Perry, August P., Jr.
Sasaki, Ronald T.
Shigemura, Akira
Shimabukuro, Stanley S.
Sumida, Henry M.
Taguchi, Ben
Tamura, Toshisada
Tanabe, John L.
Testerman, Edison L.
Wakayama, Jack H.
Watase, Yoshio
Wong, Sun Yet
Wozumi, James
Yamanaka, Stanley M.
Yokoyama, Susumu
Yoshiyama, Albert Y.
Yoshiyama, Takeo

1948-49

Ahn, Chung Dho
Chu, Jacob
Engman, Charles
Gladding, Raymond D.
Hong, William C.
Kitamura, Thomas T.
Kutaka, Masao
Lum, Wa Joong
Murakami, Masami
Murakami, Tooru
Nakahodo, Yoshinori
Nakano, Edwin H.
Ouchi, James T.
Rathburn, Leroy G.
Smythe, Alfred D.
Tani, Edwin
Tottori, Calvin A.
Yonezaki, Richard K.
Young, James S.S.

1950-51

Aratani, Terry T.
Arzadon, Juan
Austin, Donald S.
Chang, James D.C.
Ching, Wilton
Endo, Goro
Enoki, Osamu
Higashino, George T.
Honda, George
Iimura, Tadao
Inenaga, George
Kaneshige, Mitsuru
Kawamoto, Miyoji
Magoon, Orville T.
Marchal, Eugene F.
Mikasa, John H.
Miyasaki, Shuichi
Miyashiro, Larry S.
Morinaga, Thomas T.
Muraoka, Herbert K.
Nagai, Mataka
Nakahata, Tadaka
Niimoto, Satoru
Nakahata, Tadaka
Niimoto, Satoru
Nishikimoto, Harry
Nohara, Yoshio
Nosse, John H.
Oishi, Shigeru
Okano, James H.
Rasmussen, Malcolm W.
Sakamoto, Edward I.
Taketa, Noboru
Taniguchi, Paul T.
Tateishi, Herbert T.
Thoene, Alexander W.
Tonokawa, Etsuo
Tonokawa, Michio
Uehara, Henry H.
Whang, Lawrence H.Y.
Yamanaka, Francis
Yokoyama, David S.
Yoshida, Ronald M.
Yoshimoto, Asato
Young, Robert C.K.
Yuen, Jack K.

1949-50

Aona, Wilfred
Au, Harry S.H.
Chang, John Y.C.
Chinn, Newton K.S.
Chun, Richard S.Y.
Duncan, Wayne E.
Dung, Wallace S.H.
Fujii, Takeo
Fujimoto, Akira
Fujinaka, Ivan T.
Glynn, Aldon C.
Greig, George W.
Hamamoto, Albert H.
Hara, Robert T.
Imai, Harry M.
Isobe, Harry H.
Kaneko, George
Kawamura, Michael S.
Kawano, Walter I.
Lee, Frederick K.F.
Leong, Kwock Yai
Linneman, Earl A.
Masumoto, Noriyoshi
Matsuo, Larry K.
Miyamoto, Owen
Moriguchi, George S.
Murayama, Takashi
Nagato, Robert K.
Nakagawa, Hideo
Nakamura, Yasuo
Nakano, Roy R.
Nakashima, Roy T.
Nakatani, Mae
Nishimura, Harry H.
Nishimura, Masayoshi
Nishioka, Rikio
Nishizawa, Richard Y.
Okazaki, Rokuro
Saiki, Kazutaka
Saito, Norman M.
Sato, Harry N.
Sato, Kenji
Shigeta, Tsutomu
Sur, John B.K.
Tanaka, Harold H.
Thompson, William Y.
Tokushige, William S.
Tom, Herbert Q.H.
Tyau, Vernon S.F.
Watanabe, Edward K.

1951-52

Aumont, John
Chang, Herbert C.F.
Fujii, Clarence S.
Fujikawa, Yukio
Fujimoto, Clifford M.
Fujimoto, Stanley T.
Green, James S., Jr.
Hashimoto, Harry S.
Hayase, George
Iwamoto, George T.
Kagamida, Robert T.
Kawada, Hideo
Kim, Raymond C.C.
King, Donald H.
Kodama, Tamateru
Kong, Megumi
Lee, Willard P.K.S.
Liu, Paul E.S.F.
Loo, George W.T.
Luke, Theodore K.W.
Lum, Kalfred B.T.
Marutani, Arthur H.
Morimoto, George S.
Moriwaki, George G.

1952-53

Amioka, Ronald N.
Anbe, Natsuo
Arakaki, Bruce Y.
Burke, Lee H.
Chang, Walter C.Y.
Ching, Albert T.M.
Chun, Robert Y.D.
Eta, Hiroshi
Fujiyama, Stanley I.
Harada, James S.
Hirata, James S.
Hironaka, Yoshito
In, Paul W.O.
Kam, Jin Fong
Kasamoto, Yuji
Kawahara, Thomas Y.
Kawasaki, David S.
Matsuno, Miyuki
Matsusaka, Edwin N.
McMorrow, William M.
Mimaki, Calvin H.
Minamide, Masayuki
Miyamoto, Clifford T.
Mukaigawa, Kenneth T.
Nakagawa, John M.
Nakamura, Tetsuo
Nakao, James I.
Nakashima, Michiwo
Okuda, Hiromi
Okumura, Teruo
Olsen, Robert F., Jr.
Sato, Harry M.
Sekiguchi, Kenneth T.
Sideroff, Robert L.
Tanaka, Kenneth K.
Tani, Albert N.
Thompson, Melvin K.
Watanabe, Seige
Yamanaka, Charles S.
Yuen, Seung Hee

1954-55

Chun, Robert S.
Chun, Robert T.Y.
Distajo, Antonio, Jr.
Furukawa, Stanley Y.
Hamakawa, Masaru
Hee, Henry T.K.
Hirata, Kenneth T.
Iwamasa, Alfred M.
Kaluna, Jeremiah M.
Kaneshiro, Masanobu
Kato, Shoji
Kawaguchi, Seiji
Kawahara, Mitsuo
Koigawachi, Neil H.
Kozuma, Harry
Lee, Chew Hoy
Lee, Clarence B.H.
Lee, Richard C.C.
Look, Thomas H.L.
Martin, Charles
Mau, Wilfred K.F.
Mikami, Roy M.
Nagai, Ikuo
Nakamura, Masao
Naone, John K.
Nishizawa, Edgar T.
Okubo, Barry R.
Paresa, Wilfred
Sentani, Arthur T.
Suzuka, Reginald M.
Takara, Wesley H.
Taketa, Yukio
Tanonaka, Clarence K.
Tracy, George G.
Von, Vernon M.H.
Watanabe, Robert S.
Wung, Archibald E.F.
Yamada, Hisao
Yamamoto, David M.
Yoshizumi, Robert T.

1953-54

Arakawa, Edward T.
Atkinson, William J., Jr.
Bevier, David L.
Chun, Tit Mun
Endo, Wallace K.
Fukuda, Harold
Hanabusa, Reginald M.
Harada, Edward K.
Hirota, Paul M.

1955-56

Abe, Alfred M.
Ah New, Joseph A.
Aka, Roichi
Amaki, Satoru
Aragaki, Jerry T.
Asato, Edward Y.
Au, Charles

- Au, Clayton W.H.
 Chang, Lincoln M.H.
 Ching, Norman Y.S.
 Chun, Calvin K.K.
 Falardeau, Robert E.
 Hayase, Harry K.
 Hayashida, Kazuyoshi
 Hee, William B.C.
 Higuchi, Donald M.
 Hiramatsu, Robert K.
 Hirata, Edward Y.
 Hong, Wallace S.T.
 Inouye, Lewis S.
 Kawaguchi, Ronald T.
 Kellett, Edmund I.
 Kobashigawa, Reginald M.
 Kojima, James
 Kuniyoshi, Shinki
 Masatsugu, George
 Matsumoto, George S.
 Matsuoka, Allen K.
 Mikasa, Henry Y.
 Miyashiro, Susumu
 Morikawa, Ronald K.
 Muraoka, Chester K.
 Murata, Harold H.
 Niiya, Michio
 Nishimura, George K.
 Obatake, Junior K.
 Sato, Richard M.
 Takafuji, Norman K.
 Takakawa, Frederick T.
 Takeuchi, Walter M.
 Tam, Thomas
 Tamae, Robert S.
 Tanno, Stanley I.
 Tarumoto, Albert M.
 Yamaguchi, James M.
 Yanamura, Franklin K.
 Yonamine, Charles S.
 Yonemura, Yoshio
 Yoshizawa, Tadashi
 Zane, Alvin Y.S.
- 1956-57
- Arita, Thomas T.
 Asato, Masahiko
 Barona, Alfred
 Ching, Delwin P.K.
 Ching, Vernon H.S.
 Chong, Herbert H.W.
 Chun, John Y.J.
 Chung, David S.D.
 Chung, Donald H.
 Chung, Walter F.L.
 Emiliano, Manuel, Jr.
 Fujita, Richard Y.
 Goshi, Stanley S.
 Hamada, Harold S.
 Hosaka, Robert M.
 Hummel, Paul L.
 Imada, Tatsumi
 Izuo, Wallace K.
 Kawahigashi, Theodore S.
 Kodani, George T.
 Kuroiwa, Walter A.
 Kurosawa, Ernest
 Lau, Chew Lun
 Lau, Edward F.C.
 Lee, Francis M.G.
 Lee, Jin Young
 Makino, Alfred E.
 Masuda, Fred R.
 Miyamoto, Harold T.
 Muraoka, Arthur K.
 Nagaji, Michael
 Nagami, Carl O.
 Nishimura, Sidney S.
- Nomura, James K.
 Ogimi, Chosaburo
 Sakai, Harold M.
 Sano, Donald M.
 Scruton, Gordon L.
 Shimabukuro, Ernest T.
 Tagomori, Manabu
 Takamatsu, Daniel
 Tam, Roger H.
 Tsuha, Mitsuo
 Tsutsumi, Caesar S.
 Ueoka, David I.
 Yamanaka, Stanley T.
 Yang, Thomas N.H.
 Yuasa, Ernest T.
- 1957-58
- Akiona, Moses, Jr.
 Anderson, Doris N.
 Aono, Raymond
 Arakaki, Morris A.
 Asato, Kicho
 Bramhall, Grover C.
 Chun, Tit Kwong
 Crivello, Peter
 Doi, Stanley T.
 Dulay, Florante M.
 Furukawa, Harold H.
 Hedrick, Robert W.
 Higa, James J.
 Higaki, Kaoru
 Hironaga, Patrick I.
 Horikawa, Gerald A.
 Imahiro, Stanley S.
 Inouye, Charles T.
 Ito, Katsumi
 Iwai, Herbert T.
 Iwai, Robert H.
 Kagawa, Ernest
 Kaneshiro, Noboru
 Kashiwamura, James K.
 Kawaharada, Harry W.
 Kim, Donald C.W.
 Kimura, Shuzo
 Kiyabu, George K.
 Long, Kenneth Y.S.
 Lum, Frederick S.W.
 Lyau, Raymond K.S.
 Matsui, Richard
 Matsuo, Paul T.
 Mau, Howard H.W.
 Miura, Howard K.
 Miyazono, Kenneth M.
 Morimoto, Clarence T.
 Morimoto, Hiroshi
 Murakami, Harry
 Nakagawa, Richard Y.
 Nakanishi, Donald T.
 Nakayama, Thomas K.
 Ornellas, Donald
 Pai, William P.H.
 Sato, Sadao H.
 Shigemura, Robert Y.
 Shintaku, Shizuo
 Shirae, Takashi
 Shiraishi, Paul N.
 Sodatani, Eugene T.
 Sugihara, James K.
 Takita, Charles S.
 Terada, Herbert M.
 Terashima, Susumu
 Tominaga, Teuane N.
 Uyeda, Calvin S.
 Uyehara, Frank
 Wasada, Wallace I.
 Wong, Herbert K.H.
 Wong, Kenenth W.G.
 Wong, Reuben S.F.
- Wong, Waldo S.J.
 Yamamoto, Thomas H.
 Yim, George W.Y.
 Young, Allen C.H.
- 1958-59
- Abe, Harry H.
 Araki, Fred K.
 Asato, David E.
 Bello, Erenio
 Butas, Larry F.
 Chang, Joseph C.L.
 Chang, William C.F.
 Ching, Raymond H.S.
 Chinn, Salwyn S.W.
 Distajo, Rudolph K.
 Feiteira, Ronald H.
 Funasaki, Gerald T.
 Furukawa, Natsumi
 Higa, David K.
 Higa, Takashi
 Higashionna, Ryokichi
 Hirata, Herbert T.
 Hosokawa, Walter Y.
 Ichioka, Stanley S.
 Ichiyama, Ralph K.
 Itagaki, Robert I.
 Iwasaki, Donald K.
 Jacang, Bernard O.
 Kam, Donald Y.H.
 Kaneko, Roy T.
 Kawakami, Isami
 Kim, Calvin D.S.
 Kimura, Michael M.
 Kodama, Lester T.
 Koga, Albert M.
 Komoto, Roy M.
 Kop, Wendell K.C.
 Kusahara, Arthur H.
 Lee, Donald C.L.
 Lee, Sam Yit
 Liu, Christian K.S.
 Liu, William K.
 Look, James K.K.
 Masuoka, Edwin K.
 Matsuoka, Iwao
 McKinney, John S.
 Mitsumori, Richard Y.
 Miyataki, Haruto H.M.
 Morioka, William T.
 Morita, Michael M.
 Murabayashi, Richard J.
 Murata, Mark M.
 Nagamine, Richard S.
 Nakamura, Henry H.
 Nakanishi, Ronald S.
 Nakasone, Herbert Y.
 Ng, Albert H.H.
 Nishida, Jerry E.
 Okamoto, Richard T.
 Okamura, Kazumi
 Okimoto, Frank T.
 Otake, Stephen S.
 Rosene, John
 Sato, Daniel S.
 Sato, James I.
 Sato, Raymond N.
 Sawa, Charles H.
 Seita, Takeshi
 Shibata, Kenichi
 Shigano, George S.
 Shinsato, Frederick H.
 Sugiyama, Harold F.
 Takara, Howard K.
 Takara, Stanley K.
 Tam, Calvin B.M.
 Tokuda, Raymond T.
 Tong, Kwock Chew
- Unemori, Satoshi
 Ushijima, Thomas M.
 Von, Milton K.S.
 Watanabe, Wallace A.
 Yamaguchi, Albert S.
 Yamaguchi, Shigeto
 Yamamoto, Conway N.
 Yamauchi, James H.
 Yasumoto, Stanley Y.
 Yee, Clarence K.S.
 Yee, Edmund C.H.
 Yoshinaga, Gene N.
 Young, Howard C.Y.
 Young, Leonard H.L.
 Young, Reginald H.F.
- 1959-60
- Akita, Gordon K.
 Akiyoshi, Rudolph S.
 Aoki, George T.
 Arakaki, Norman T.
 Asato, Hitoshi
 Au, Peter W.K.
 Au, Reginald K.K.
 Chan, Freddie C.S.
 Chong, Quon Hin
 Chun, James Y.T.
 Date, Harry H.
 Doi, Roy T.
 Fujii, Richard M.
 Fujimoto, Frank S.
 Hansen, Hans C.
 Hirano, Takuji
 Hiraoka, George A.
 Hiu, George A.Y.
 Honda, Harry T.
 Hong, Charles S.K.
 Iboshi, Kenneth K.
 Ichiyama, Ronald S.
 Idehara, George M.
 Ing, Richard B.W.
 Iwasaki, George H.
 Izuka, Mikio
 James, Fred L.
 Kanehisa, David T.
 Kanemori, Claude H.
 Kaneyama, Noboru F.
 Kimura, Peter T.
 Kimura, Wilfred
 Kobayashi, Wayne K.
 Kohatsu, George S.
 Kuroda, Kazuo
 Lau, Robert W.
 Lee, Clarence M.C.
 Lee, Reuben
 Lee, William H.S.
 Lee, Winfred Y.K.
 Lock, Allan K.F.
 Loo, Gary Y.C.
 Mamiya, George I.
 Masaki, Kiyoji
 Masumoto, Robert S.
 Minakami, Herbert H.
 Mitsunaga, Wallace S.
 Miyasato, Richard H.
 Morikawa, Sterling H.
 Nagamine, Donald H.
 Nagano, Ronald H.
 Nakamura, Velma F.
 Nishimoto, Brian K.
 Nuha, Paul T.
 Ogawa, Sanford
 Okada, Tad T.
 Okamura, Richard M.
 Osada, Stanley H.
 Oshiro, Sachiya
 Pang, Hiram H.S.
 Patacsil, Peter E.
 Pimental, Richard A.

Ramelb, Benjamin
Reynolds, Elzie G.
Saiki, Albert S.
Saito, Elbert T.
Sakado, Raleigh T.
Santo, Dennis
Shinjo, Mamoru
Shiroma, Francis A.
Stone, Edwin K., Jr.
Takahashi, Lloyd Y.
Takahashi, Minoru
Takamiya, Wilbert T.
Takenaka, Ikuo
Tamanaha, Thomas S.
Tokunaga, Walter
Umamoto, Gilbert A.
Uyehara, Yukio
Wakahiro, Wallace M.
Watanabe, Kenneth N.
Yamada, Lloyd M.
Yasuda, Henry M.
Yee, Charles Y.S.
Yonamine, Kenneth T.
Young, William, C.L.

1960-61

Arakaki, Stanley T.
Balmores, Francis
Baxter, Bruce H.
Bohner, Richard L.
Chang, Elmer C.K.
Chang, Frank C.K.
Chang, Linford M.S.
Chee, Hon Ping
Ching, Godfrey W.K.
Ching, Stephen T.C.
Chong, Elizabeth K.O.
Chong, Harry W.K.
Chow, Albert W.K.
Chun, Ronald C.K.
Ebesu, James K.
Ejercito, Roland
Esaki, Richard H.
Fergerson, Robert F.
Fujimoto, Maurice M.
Fujitani, Ralph S.
Fukumoto, Malcolm T.
Gaborno, Modesto E.
Hamasaki, James K.
Harada, Edwin T.
Hayashida, Norman T.
Hee, Kenneth K.N.
Hee, Walter Y.H.
Higa, Roy Y.
Hindle, William F.
Ho, Roy K.T.
Ichinotsubo, Edward N.
Iida, Edward H.
Imanaka, Hisashi
Kagawa, Walter K.
Kagehiro, Edwin U.
Kaneshige, Tokuo
Kashiwahara, Royal M.
Katakura, Fred T.
Katano, Joseph
Kato, Robert S.
Kau, Leong Jean
Kido, Herbert I.
Kikuchi, Masao D.
Kikuchi, Stanley K.
Kim, Leslie J.
Kiyota, Harry H.
Koizumi, Melvin K.
Kwock, Kenneth C.W.
Lau, Raymond D.K.
Lear, Gregory T.
Lee, Albert Y.C.
Lee, Joel W.H.

1961-62

Liu, Owen S.
MacConnell, Michael J.
Maruyama, Edwin H.
Matsuo, Ted K.
Miyashiro, Yoshiaki
Moriyama, Kenneth J.
Murakami, Richard H.
Muraoka, Lawrence O.
Murata, Karen H.
Nagano, Richard T.
Nakahara, Richard H.
Nakamura, Carl T.
Nakata, Ikuo
Nishida, Kanehiro
Nishioka, Jerry M.
Noji, Ernest
Ogawa, Edwin
Ohara, James K.
Okamitsu, Taketo
Okumoto, Stanley K.
Onizuka, Arnold M.
Osaki, Allen I.
Sakai, Kenneth T.
Sato, James F.
Sears, Glenn A.
Shin, Stanley P.J.
Shiraishi, Elmer T.
Suzuki, Melvin M.
Takaesu, Richard H.
Takahashi, Stanley S.
Tanabe, Jessie H.
Teragawa, Richard K.
Tonda, Harold K.
Tsutomi, Kenneth S.
Uemae, Wayne S.
Umamoto, Kenneth M.
Vera Cruz, Mark K.
Wakida, Richard M.
Wann, Billy A.
Willocks, Jack P.
Wilmington, Clarence P.
Wong, Richard S.H.
Wong, Yun Bang
Yamamoto, Gerrick Y.
Yim, Stanley G.H.
Yoda, Kenneth M.
Yoshioka, Allen T.
Young, Wah Chun
Yukumoto, Ralph K.
Yutaka, Robert T.

1962-63

Len, Raymond C.Y.
Look, Michael L.
Lum, Herbert K.O.
Masuda, Richard T.
Matsumoto, Daniel S.
Matsumoto, Walter M.
Matsukado, Edes M.
McMorrow, Martin
Miura, James S.
Murphy, James E.
Nakahara, Richard Y.
Nakahara, Wallace S.
Nakamura, Fred S.
Nakashige, Hideo
Ng, Samuel C.W.
Nishida, Mitsuhiko
Okumura, Kenneth A.
Oyama, Richard C.
Ozaki, Carl Y.
Padilla, Joseph
Powell, Thomas S.
Sahara, Norman M.
Sakamoto, Gerard
Sanpei, Francis T.
Sekiya, Richard M.
Shiroma, Raymond
Takahama, Charles H.
Takayasu, Jack K.
Thompson, Frank C.
Uehara, Stanley Y.
Uekawa, Herbert T.
Uyehara, Lawrence E.
Uyema, George M.
Wallrabenstein, Paul
Wong, Stephen
Yamamoto, George M.
Yamanoha, Allen
Yamashita, Albert H.
Yoshioka, Marilyn E.
Young, Harvey H.B.

Abe, Hiroji
Abe, Michael I.
Anderson, Ronald W.
Andras, John
Arizala, Gary H.
Asato, George Y.
Asato, James K.
Bender, Robert D.
Bolosan, Onofre
Carlmark, Jon W.
Chee, Benjamin
Chee, Bernard L.K.
Ching, Rollin W.
Chong, Luther H.W.
Fong, Chuck S.
Fujikawa, Thomas T.
Fujimura, Ted M.
Fukuchi, Stephen M.
Goo, Audubon C.
Gushiken, James K.
Hasegawa, Kenneth T.
Ho, Francis L.W.
Inouye, Herbert S.
Itoga, Rex S.
Kadooka, Roy H.
Kanda, Gary T.
Kawaguchi, Stanley K.
Kimura, George M.
Kobayashi, Ronald T.
Koga, Malcolm T.
Kono, George
Kouchiyama, Robert
Lee, Peter W.D.
Leong, Clement T.K.
Lum, David A.
Malzman, Morris

1963-64

Masatsugu, Kenneth
Masuda, Manfred M.
Matsuo, Hisashi
Miura, Raymond H.
Miyashiro, Wilfred T.
Miyata, Francis L.
Mizuno, Thomas T.
Moon, Michael M.H.
Morimoto, Alvin K.
Morita, Henry S.
Nagatani, Kenneth T.
Naito, George Y.
Nakahara, Roy T.
Nekonishi, Calvin S.
Nishihara, Ronald T.
Nishimura, James K.
Oki, Leonard F.
Omari, Robert Y.
Onishi, Roy K.
Oshiro, Yoshimori
Palalay, Salvador F.
Riola, Robert A.
Rutledge, Ronald C.
Sakata, James I.
Sarae, Robert M.
Seki, Victor K.
Sewake, William H.
Shiroma, Richard K.
St. Claire, Robert K.
Stevenson, John C.
Sugita, Kenneth Y.
Takabayashi, Thomas S.
Takara, Roy H.
Takata, Alvin M.
Takayama, Thomas T.
Tamashiro, George T.
Tanaka, Benjamin S.
Tano, Sumio
Uyehara, Roy T.
Wasden, David R.
Wong, Gordon L.W.
Yamamoto, Richard K.
Yamamoto, Warren S.
Yamauchi, Jack A.
Yin, David J.H.
Yoshimura, Philip I.
Yoshinaga, Melvyn A.
Yuen, Howard H.W.

Abe, Kenneth H.
Abe, Richard T.
Adaniya, Fred S.
Agena, Lawrence S.
Ajimine, Ronald M.
Aono, Karl K.
Araki, Stanley I.
Asari, Leslie Y.
Ching, Wendell T.P.
Chong, Nelson K.M.
Chong, Robert D.
Chow, Leonard K.W.
Choy, Gary C.P.
Chun, Vernon P.
Domingo, Walter W.
Engel, Paul T.
Eto, Marshall A.
Hamamoto, Paul M.
Hayashi, James T.
Hayashi, Melvin
Higa, Roy T.
Higuchi, Hobart A.
Higuchi, Robert A.
Hung, Benjamin C.P.
Ibara, Kenneth F.
Ichioka, Stanley N.
Iwamasa, Raymond T.
Iwasaki, Donald K.

Kakimoto, William M.
Kanemori, Myron K.
Kaneshiro, Roy M.
Karimoto, Harold H.
Kawachika, Norman M.
Kawasaki, Robert K.
Kitabayashi, Kenneth S.
Kobayashi, Wayne K.
Kogasaka, Herbert M.
Kubo, Clarence K.
Kuwahara, Warren M.
Kwock, Edison C.Y.
Lau, Raymond W.S.
Lum, Eric H.C.
Lum, Franklin Y.S.
Matsukado, William M.
Mikami, David Y.
Mikasa, Glenn K.
Minakami, Melvin T.
Miyashiro, Albert H.
Murakami, David H.
Murakami, Stanley S.
Muranaka, Kay K.
Nakamura, Lloyd Y.
Nakatani, Henry M.
Nishimura, Donald M.
Nunogawa, Jerry H.
Ogle, William
Ohara, Clarence K.
Okikawa, Harold T.
Okinaga, Raymond I.
Ono, Raymond M.
Oshiro, Ronald K.
Ouchi, Jun
Pascua, Rudy M.
Rivera, Paul A., Jr.
Serikawa, Charles Y.
Soeda, Vincent T.
Souza, Howell H., Jr.
Sumida, Wilfred Y.
Suzuki, Richard M.
Takahara, Edmund W.
Takahashi, Richard T.
Takemoto, Alvin K.
Teruya, Shinichi
Thom, Kenneth J.
Tom, Remi K.H.
Toma, Thomas K.
Tomaso, Richard K.
Tsang, Ju Hau
Tsunoda, Roland T.
Tsunami, Ronald F.
Witt, James W.
Wong, Raphael W.H.
Wong, Raymond P.
Yamaguchi, Michael S.
Yasui, Glenn M.
Yoshizaki, Harold I.
Young, Stanley S.Y.

1964-65

Adachi, Glen Y.
Adams, Clarence S.
Albano, Andres, Jr.
Aono, Stanley M.
Arakaki, Alvin K.
Araki, Melvin H.
Arashiro, Daniel Y.
Asato, Melvin S.
Au, Kenneth Y.K.
Callejo, Simeon A.
Chang, Brian M.C.
Ching, Vivian W.M.
Chun, Delo K.W.
Ebisu, Yoichi
Fernandes, Steven C.
Fujieda, Roger Y.
Fujikawa, Stanley T.

Fukugawa, Marvin
Fukumoto, Denis
Funada, Lloyd I.
Fung, Gaye K.
Goo, Tyrus M.H.
Heller, Donald C.
Higa, Raymond T.
Ifuku, Frank T.
Imada, Kenneth S.
Inouye, Bert E.
Ishida, Herbert T.
Ishihiro, Lance M.
Ishizaki, Kenneth T.
Ito, James H.
Iwai, Paul S.
Iwata, Roy T.
Jarrett, Arthur B.
Kami, Jerry J.
Kawauchi, Carl M.
Kaya, Allen T.
Kimura, Roy K.
Kobayashi, Mavis K.
Koga, Marvin R.
Koga, Michael T.
Kong, Melvin K.T.
Kunimoto, Faith R.
Kunitake, Stanley S.
Kurusu, George T.
Lau, Calvin C.H.
Lee, Mervyn W.
Lee, Stanley H.K.
Leung, Alan H.
Lum, Wai Choy
Maeda, Randall K.
Malilay, Casey K.
Matsuda, Satoru
Matsumoto, Yukimasa
Matsunaga, Clyde K.
Matsushige, Roy K.
Mau, Francis H.
Miura, Harold H.
Miyake, Roy T.
Miyasaka, Edwin I.
Miyashiro, Malcolm Y.
Mock, Gray K.W.
Morikone, Wade K.
Morimoto, Homer M.
Morinaga, Richard S.
Morita, Thurston T.
Moriyama, Robert H.
Murakami, James H.
Nago, Brad T.
Nakahara, Raymond T.
Nakamoto, Thayer T.
Nakamura, Alex I.
Nakamura, Herbert I.
Nakasone, Herbert I.
Nakayama, Mashiko
Nishimura, Allan T.
Nishioka, Francis H.
Nogawa, Ernest T.
Nuibe, Gary A.
Nukushina, Robert K.
Okamura, Earle M.
Okamura, Ronald I.
Okinaga, Lance H.
Ono, Hugh Y.
Otani, Chester H.
Ouchi, Ken
Ouye, Randolph K.
Padaca, Rogelio
Richardson, George C.
Salmon, Fred E.
Sato, Milton K.
Sato, Stephen M.
Shimoko, Rodney N.
Shiu, Denis T.T.
Soong, Rodney T.H.

Sumida, Robert K.
Sumida, Thomas H.
Suzuki, Gary S.
Suzuki, Richard K.
Takamoto, Stanley M.
Takayasu, Gerald T.
Tam, George H.
Tamashiro, David N.
Teruya, Harry T.
Uesugi, William T.
Urata, Richard K.
Utsumi, Randall P.
Watanabe, George R.
Whiting, Stratford L.
Wong, Bobbie Y.K.
Wong, Norman W.
Yamamoto, Rodney T.
Yamamoto, Ronald A.
Yasutake, Donald S.
Yeen, Vincent Y.T.
Yoshimoto, Charles Y.

1965-66

Adaniya, Henry N.
Ahuna, Glenn G.Y.T.
Ah Yo, Herbert, Jr.
Angell, Roger G.
Aoki, Jerald K.
Au, Douglas K.H.
Camarillo, Tommy A.
Chang, Francis K.W.
Chang, Richard C.W.
Ching, Eddie K.H.
Chung, Giovanni K.L.
Cooke, Richard A.
Dant, Robert E.
DeBoice, John N.
DeWolf, John T.
Fujikawa, Daniel N.
Fukushima, Alan F.
Goto, Victor M.
Hamamoto, Darwin J.
Hayashida, Raymond T.
Hirata, Richard K.
Hirokawa, Dennis O.
Ikeda, Melvin K.
Imamura, Albert M.
Imamura, Albert Y.
Imata, Gordon Y.
Isa, Dennis A.
Ishida, Robert S.
Ito, Henry H.
Ito, Ronald M.
Kagawa, Clay A.
Kaku, Ronald M.
Kam, Phillip W.T.
Kanemura, Dennis T.
Karamatsu, Richard E.
Kawamura, Dennis K.
Kawasaka, Gary S.
Kishimori, George Y.
Kobashikawa, Peter L.
Kon, Raymond T.
Lee, Frederick H.K.
Lee, Gary
Lee, Norman Y.W.
Leong, Robin L.C.
Lindemann, William C.
Lok, Kenny Y.T.
Lum, Leslie K.
Maekawa, Stanley H.
Masaki, Melvin Y.
Masuko, Roy M.
Matsuoka, Gordon M.
Matsusaka, Eugene K.
Mau, Walter F.Y.
Matsuoka, Gordon
Matsusaka, Eugene K.

1966-67

Mau, Walter F.Y.
Mikasa, Melvin S.
Minamoto, Robert A.
Mitsunaga, Dennis K.
Miyashiro, Edwin H.
Miyata, Glenn H.
Moore, Robert J., Jr.
Morishige, Milton T.
Motokane, Earl S.
Murabayashi, Ronald H.
Muronaka, Robert Y.
Nakamoto, Francis T.
Nakao, Steven S.
Nishimura, Richard H.
Nishioka, Arnold Y.
Nielsen, Murl T.
Niizawa, Richard K.
Ogura, Isaac A.
Okinaga, Glenn T.
Okuda, Carl T.
Okumura, Owen
Oshiro, Michael H.
Oshiro, Roy S.
Otani, Henry H.
Shigeoka, Clifford K.
Shigetani, Michael H.
Sakai, Kenneth T.
Sano, Jerome S.
Shimabuku, Dennis K.
Shintani, George
Sokoloski, Stanley E.
Sonomura, Harold H.
Takamoto, Roy H.
Takano, Wayne S.
Tamanaha, Stanley A.
Tanabe, Yoshiaki
Tanaka, Ronald U.
Tomoyasu, Wayne R.
Tsujioka, Kenneth Y.
Uchida, Edward K.
Vaudrey, Walter D.
Wada, Warren T.
Watanabe, Robert S.
Wernle, Charles F., II
Wong, Michael K.C.
Wong, Robert K.Y.
Yahiku, Kenneth N.
Yamamoto, Gary K.
Yamamoto, Richard H.
Yamane, Craig Y.
Yamatsuka, Walter K.
Yang, Charles C.H.
Yeung, Cheuk H.
Yeung, Put Hing
Yeung, Tai Hing
Yoo, Chan
Yoshizawa, Edwin T.
Young, Daniel H.W.
Yuen, Stanford B.C.

Hamano, George I.
Hazama, Larry M.
Higuchi, Keith
Hirano, Ronald N.
Hirota, Francis T.
Ho, Ronald N.S.
Huntley, Charles M.
Ichinose, Paul M.
Iha, Richard Y., Jr.
Imada, Leslie H.
Inake, Michael T.
Iwata, Ronald K.
Kam, Thomas P.F.
Kamiya, Douglas S.
Kanehira, Earl M.
Katakura, Frank Y.
Kasaoka, Chester H.
Kataoka, Ronald K.
Kawamura, Rodney M.
Keone, Michael L.
Kishiba, Raymond I.
Knapp, Ronald H.
Koizumi, Koin
Kon, Stanley S.
Konishi, Carol T.
Koshi, Ray G.
Kuba, Edward M.
Kuba, Stephen Y.
Kurusu, Donald S.
Kuwanoe, Alan S.
Lee, John C.T.
Loo, Ralph K.K.
Lum, Harvey L.
Matsumoto, Carl
Matsumoto, Eric M.
Matsumoto, Melvin M.
Matsumoto, Michael P.
McClure, Bruce
Miller, Conovan L.
Miyashiro, Henry
Murayama, Randolph
Nagai, Kenneth O.
Narimasu, Edward T.
Newman, Gary L.
Nishiyama, Richard
Nomura, Edwin N.
Okubo, Michael T.
Onouye, Barry S.
Osterheim, Alan H.
Ramsey, Walter M.
Sagum, Marvin
Shak, Leslie Y.C.
Shimada, Ernest N.
Smith, Storrs D.
Soo, Milton Y.H.
Sumida, Francis D.
Takano, Bernard K.
Takemori, Kenneth K.
Tam, Kenton K.T.
Tamanaha, Doris Y.
Tamashiro, Roy J.
Tanaka, Howard H.
Tanaka, Jay M.
Tanaka, Rodney S.
Toda, Alvin E.
Tom, Robert G.T.
Tsuchida, George
Uechi, Thomas T.
Ueda, Tomoko
Uedoi, George M.
Umeda, David I.
Wakumoto, Richard H.
Wakuzawa, Lawson R.
Wong, Harvey L.
Yamamoto, Ernest H.
Yamamoto, Gerald T.
Yamamoto, Kenneth B.
Yamamoto, Richard S.

Yamamoto, Ronald T.
Yamamoto, Wesley
Yamamura, Mark T.
Yamasato, Sheldon T.
Yamashiro, Lawrence M.
Yasuda, Brian J.
Yee, David K.C.
Yee, Robert P.C.
Yoshida, Harry S.
Yoshioka, Howard
Young, Dolores M.L.

1967-68

Alencastre, Philbert J.
Arimoto, Walter M.
Ban, Eugene M.
Bode, Thomas H.
Bow, David M.H.
Chan, John N.H.
Chang, Allen K.
Char, Harvey T.
Cheng, Hing Yiu
Cheung, Kum Tim
Chun, Russell S.H.
Cooley, Kenneth R.
Daida, Brian A.
Fukumoto, Brian S.
Fung, John R.
Gakiya, Clifford S.
Gota, Raymond H.
Hagiwara, Curtis
Hanashiro, Kosu
Harvey, Michael L.
Higuchi, Glenn H.
Hinazumi, Wayne H.
Hirata, Theodore
Hirokane, Bryan F.
Hiroshige, James Y., Jr.
Hoo, Rodney G.O.
Hoshibata, Calvin Y.
Huffman, Walton H.
Ikehara, Norman K.
Inouye, Winfred T.
Ishihara, Benjamin
Itamura, Warren K.
Jennings, Kirk E.
Kaneshiro, Norman S.
Kaneshiro, Wilfred
Kato, Stanley F.
Kawauchi, Brian H.
Kosaka, Thomas S.
Kudo, Paul M.
Kunimitsu, Reginald T.
Kuroda, Randall S.
Lee, Victor W.H.
Lo, Robert W.
Mark, Kenneth M.S.
Matsuda, Alan M.
Matsuda, Jerry M.
Matsuda, Walter H.
Miller, David H.
Miyamoto, Dennis T.
Miyamoto, Henry H.
Morikawa, Dennis F.
Morita, Hiraoki
Mun, Thomas J.
Nakahara, Frederick S.
Nakahara, John I.
Nakamura, Russell Y.
Nash, Kenneth H., Jr.
Nasu, Milton T.
Ng, Herbert S.Y.
Okinaka, Warren K.
Okumura, Stanley H.
Omori, Roger T.
Orimoto, Douglas I.
Quon, Randolph D.S.
Robinson, Hal

Saignasith, Chantawong
Saito, Russ K.
Sakai, Dennis M.
Shigeoka, Dennis K.
Shimada, Jonathan K.
Shiraishi, David T.
Shojinaga, Richard H.
Sumida, Henry A.
Takahashi, Michael Y.
Takemori, Wesley S.
Tamakawa, Thomas T.
Tamura, Stanley M.
Tanaka, Alfred A.
Tomihama, Ernest H.
Trinh, Nakry
Tsuda, Calvin M.
Tuggle, Davis B.
Turner, Jerald C.
Umamoto, Michael S.
Valentine, John
Watanabe, David K.
Watanabe, Harry F.
Watanabe, Melvin M.
Watanabe, Morris H.
Wong, Wendell S.H.
Yamada, Michael K.
Yamamoto, Edwin T.
Yamamoto, Laurence H.
Yamanuha, Bert S.
Yamaoka, Alfred Y.
Yamasaki, Michael A.
Yamashiro, Roy K.
Yonamine, Gary
Yoshida, Paul H.
Yoshimura, Richard K.

1968-69

Abe, Richard S.
Akamine, Myles I.
Antonio, Robert
Aoyama, Stephen S.
Arakawa, Glen Y.
Arizumi, John L.
Ayau, Thomas L.C.
Chang, Wendell M.K.
Char, Marvin M.W.
Cheung, John L.N.
Chiu, Peter S.
Chung, Duke H.
Cox, Earl F.
Davis, Thomas D.
DeBeer, Martin K.
DeCosta, Manuel G., Jr.
Ebisu, Deniji
Endo, Melvin K.
Falkenstein, John B.
Fay, Richard H.
Ferreira, Joseph
Fong, Dennis
Fujioka, Henry T.
Halm, Samuel Y.S.
Hananani, Dennis K.
Harada, David K.
Hattori, Michael
Hee, Irving Y.W.
Higuchi, Lawrence M.
Hironaga, Alvin T.
Igarashi, Owen Y.
Imada, Alan M.
Isobe, Allan T.
Ito, Glenn S.
Kaapuni, Richard
Kagimoto, Ian
Kami, Earl E.
Kawakami, Gerald S.
Kawamura, Bruce K.
Kaya, Thomas
Keller, Larry E.

Kido, Wendell H.
Kim, Alison J.
Koki, Stanley
Konno, Leslie T.
Kop, Harold M.
Kuwanoe, Calvin
Kwock, Raymond
Lee, Duane L.N.
Lee, Harvey Y.C.
Lee, Herman B.K.
Lee, Melvin N.H.
Link, Gary L.
MacLaren, Ian R.
Maeda, Melvin M.
Mangahas, Rabel K.
Miyake, Takayoshi T.
Miyasato, Daniel S.
Mizobe, Marshall
Morikawa, Clifford Y.
Morimoto, Glenn M.
Morinaga, Wayne S.
Nagamine, David I.
Nagao, Michael H.
Nagatoshi, Clyde T.
Nakagawa, Edward T.
Nitta, Milton K.
Nunokawa, Alan
Okada, Garret S.
Okinaka, Alan K.
Oki, Wallace T.
Pang, Steven J.D.
Patnode, Paul J.
Pfeiffer, Barbara May
Reynolds, Clifford C.
Sagum, Nelson A.
Sakai, Christine M.
Sakai, Marshall I.
Sakamoto, Conrad S.
Sakamoto, Norman L.
Sakamoto, Leslie K.
Sato, Warren T.
Schroeder, Darrel
Shak, Ronald C.W.
Shin, Digby
Siu, Ronald C.
Sumile, Raymond
Takai, Daniel S.
Takashima, Ronald M.
Takemoto, Kenneth T.
Tanaka, Wilfred N.
Thompson, George R.
Toyama, Gary M.
Tung, Pho H.
Uyesugi, Michael
Wong, Darryl E.
Yamaoto, Roy H.
Yonehara, Wayne
Yoneyama, Craig T.
Yoshioka, John H.
Yoshioka, Bertram M.
Young, Melvin
Young, Michael S.Y.

1969-70

Abe, Stanley
Adaniya, Kenneth O.
Ahu, Norman
Akbar, Mohammed
Akita, Clifford T.
Arakaki, Kazuyuki
Arita, Howard Y.
Atabaki, Bijan
Behbahani, Esmeel I.
Blankenship, Mark H.
Calizar, Patrick
Chan, Kwok Lun
Chan, Wai Man
Chang, Edmund

Ching, Herman S.O.
 Ching, Reginald K.Y.
 Cheng, Louis T.L.
 Chong, Clarence K.W.
 Co, Benjamin Y.M.
 Coloma, Geneson
 Conway, Michael
 Dhakhwa, Madan Ratna
 Engstrom, Evan E.
 Fancett, Scott F.
 Fu, Victor Y.H.
 Fujii, Raymond H.
 Fujikawa, Edith M.
 Fujimoto, George S.
 Fujiwara, Thomas O.
 Fukumoto, Roy K.
 Gomes, Douglas L.
 Hamai, Jay K.
 Hamano, Miles
 Harada, Lawrence S.
 Harada, Peter A.
 Harrison, Christopher
 Hashimoto, Bruce T.
 Hashimoto, Clayton
 Hashiro, Wayne M.
 Hayama, Roy E.
 Higa, Dennis S.
 Ho, Morris Dean
 Ibara, Stanley
 Imamura, Clifford S.
 Infante, Raymond
 Ishimitsu, Paul T.
 James, Clifford E.
 Kapasebele, Phillimon
 Kaya, Maurice H.
 Kiehm, Robert S.G.
 Kim, Brian M.
 Kobayakawa, Wilfred K.
 Koike, Pierson H.
 Komine, Wilfred
 Kop, Steven K.C.
 Kott, Louis K.
 Koza, Ronald H.
 Kuiuoka, Bertram H.
 Kurashige, Roland
 Lagpacan, Jimmy C.
 Law, David Chung Yee
 Lee, Elizabeth M. (Mrs.)
 Lee, George H.N., Jr.
 Lee, Lloyd P.C.
 Leong, Leonard K.P.
 Leong, Margie S.J.
 Leu, Eric D.
 Lim, Chung Kyu
 Lizama, Jesus T.
 Lonblad, Sigurd C.
 Lum, Geraldine K.J.
 Magliulo, Joseph A.
 Malikyar, Mohammed O.
 Malina, Joseph K., Jr.
 Matsuda, Richard T.
 Matsushita, Gordon K.
 McKenna, James T., Jr.
 Mende, Howard
 Miwa, Stephen
 Miyamoto, Melvin
 Miyashita, Glenn
 Morita, Clyde T.
 Morita, Harry M.
 Nagasako, Roy
 Nakamura, Floyd A.
 Nakamura, Vernon
 Nakayama, Steve
 Narimasu, Wayne
 Nishioka, Roy
 Obispo, Edward L.
 Ogawa, Carl S.
 Ogawa, David T.
 Ogawa, Lawrence A.
 Okazaki, Clyde Y.
 Okura, Gary N.
 Onaka, Milton I.
 Oshiro, Henry S.
 Oshiro, Richard N.
 Otier, Richard A.
 Pang, Courtland H.L.
 Pang, Michael J.C.
 Ramirez, James C.
 Saiki, Edwin M.
 Sakamoto, Gary K.
 Sakimura, Glenn K.
 Sako, Lloyd M.
 Santo, Paul T.
 Sasaki, Melvin S.
 Sasamoto, Pedro A.
 Shimabukuro, Mark T.
 Shimamoto, Steve T.
 Shinmoto, Aaron H.
 Shirakawa, Kazuo
 Shiroma, Dallas M.
 Spithill, John A.
 Sueyoshi, Melvin
 Sung, Harold Y.C.
 Tahara, Erick K.
 TaiSee, George J.
 Takafuji, Melvin S.
 Takenaka, Phillip H.
 Tanimura, Arthur K.
 Tano, Darrel G.
 Tasaka, Robert E.
 Thompson, Robert, Jr.
 Tom, Dexter
 Toth, Andrew
 Uyeda, Derrick
 Wada, Ronald
 Watanabe, Gary K.
 Watari, James T.
 Watt, James S.B.
 Wong, Jeffrey C.D.
 Wong, KwaiYee
 Wong, Nolan G.H.
 Wong, Stephen C.L.
 Yamada, James
 Yamada, Ronald
 Yasunaga, Richard K.
 Yap, Emerson
 Yamasaki, Eric
 Yee, Michael K.H.
 Yueng, Kam Fook
 Yokomichi, Glenn T.
 Yokoyama, Melvin
 Yong, Alan Y.C.
 Yoshida, Grant N.
 Yoshimoto, Ronald K.
 Young, Richard S.W.

1970-71

Ahn, Dennis W.
 Arakaki, Gerald M.
 Araki, Richard
 Arisumi, Lloyd K.
 Asato, Stephen K.
 Bounkeoprseuth, Boun H.
 Bounlangsy, Vanxay
 Carnate, Gerobin
 Chan, Eddie Y.S.
 Chan, Wellington K.
 Chan, Yui Kwan
 Chin, Francis W.L.
 Ching, Boon Charn
 Ching, Christopher
 Ching, Daniel S.W.
 Chong, Reginald K.H.
 Chosa, Toshihiro
 Collado, Doroteo M.J.
 Choy, Curtis W.
 Dahilig, Richard C.V.
 Dunn, Melvin A.
 Elliot, Sucuma P.
 Fitch, Ronald E.
 Flores, Michael S.
 Flynn, William M.
 Fokumlah, Adolph B.
 Fujitani, Larry H.
 Fukushima, Roy Y.
 Fung, Francis T.P.
 Furumoto, Irwin I.
 Garcia, Clemente
 Gonzales, Virgilio P.
 Goto, David T.
 Goto, Leslie T.
 Hahn, Rory H.
 Hamada, Calvin T.
 Hamada, Gerald
 Harada, Edward
 Harada, John H.
 Hasebe, Kunio
 Hashimoto, Neil W.
 Hida, Harvey K.
 Higa, Samuel J.
 Higuchi, Alan E.
 Hikichi, Donald Y.
 Hongo, Gary K.
 Hoo, Kenneth G.W.
 Inouye, Robert
 Ishikawa, Gary M.
 Itaki, Colin S.
 Itsuno, Maurice
 Iwahashi, Vincent P.
 Josephson, Michael A.
 Kaizuka, Glenn M.
 Kaku, Melvin N.
 Kamaka, Clarence K.
 Kamimoto, Clyde H.
 Kaneda, Kenneth
 Karamatsu, Glenn T.
 Kawasaki, Arthur K.
 Kawasaki, Karl T.
 Kawata, Paul K.
 Kikuta, Roy S.
 Kim, Richard S.M.
 Kim, Tae Sun
 Kirpalani, Aroon K.
 Kobashigawa, Steve Y.
 Kobatake, Earl F.
 Kobayashi, Craig A.
 Kobayashi, Paul K.
 Kudo, Raymond K.
 Kuramoto, Dennis K.
 Lau, Kenneth K.S.
 Lau, Nelson K.H.
 Lee, Corneil M.Y.
 Lee, Darryl D.F.
 Lee, Dennis K.W.
 Lee, Ethan P.
 Lee, Robert G.F.
 Lee, Warren H.W.
 Lenchanko, Frederick, Jr.
 Leung, Daniel K.T.
 Leung, Richard K.
 Li, David D.K.
 Litfin, Kenneth F.
 Lum, Ross W.J.
 Magalong, Romeo G.
 Masada, Glenn Y.
 Matsuo, Ronald H.
 Matsuura, Glenn K.
 Mikasa, Gary T.
 Mimura, Clayton S.
 Minato, Frederick J.
 Miwa, Russell Y.
 Miyashiro, Clarence T.
 Miyashiro, Randall W.
 Mizumoto, Miles M.
 Mojaddidy, Zabihullah
 Morikawa, Wayne A.
 Morinaga, Marc A.
 Morishige, Robert T.
 Nagamine, Wilfred
 Nakagawa, Calvin T.
 Nanamori, Wesley
 Nishihara, Rodney
 Nishimura, Clifford K.
 Nishimura, Lennox K.
 Nomura, Myron
 Nunes, Frederic S.
 Odiorne, Clinton J.
 Oie, Myron T.
 Okada, Ralph T.
 Okada, Andrew S.
 Onishi, Roy M.
 Ota, Glenn Y.
 Oyama, Sidney M.
 Pai, June L.
 Pang, Barry K.O.
 Pang, Frederick J.S.
 Pang, Jerry J.
 Racelo, Michael M.
 Racuya, Carl M.
 Sakamoto, Kenneth T.
 Samori, Alan K.
 Sato, Ronald J.
 Satogata, Alvin N.
 Sawa, James K.
 Shen, Bob C.T.
 Shibuya, Dana Y.
 Shikuma, Eugene
 Shimamoto, Cary S.
 Shimamoto, Mike S.
 Shimazu, Gary M.
 Shintani, Edwin K.
 Simmons, Thomas C.
 Simon, James E.
 Siu, Benjamin C.D.
 Song, Chang Suk
 Sousa, Lawrence D.
 Souza, Leroy A.
 Spowart, Michael P.
 St. Clair, Robert H.
 Sthapornpat, Wirat
 Sue, Gregory S.H.
 Sunahara, Alvin Y.
 Suzuki, Theodore J.
 Takamiya, George
 Takara, Yuji
 Takeguchi, Earl S.
 Takeshita, Alvin
 Tanaka, Ronald S.
 Tay, Yina L.
 Teshima, Gregory S.
 Tin, Kingsley H.K.
 Tomita, Wayne T.
 Tomitagawa, James H., Jr.
 Tong, Kenneth K.W.
 Tsang, Albert C.
 Ueda, Glenn S.
 Wagatsuma, Alan S.
 Wardak, Hafizullah
 Wong, Arthur K.K.
 Woo, Danny T.W.
 Woodward, Darrell N.
 Yamaki, Dale N.
 Yamaki, Melvin S.
 Yamamoto, Warren
 Yamanouchi, Roy
 Yatsuhiko, Michael Y.
 Yee, David S.
 Yee, Glenn J.P.
 Yee, Harold K.
 Yim, Bryan K.H.
 Yim, Gordon S.W.
 Yogi, David R., Jr.

Kashiwa, Garold S.
Kato, Riki L.
Kawai, David K.
Kawakami, Clyde R.
Kawamoto, Clyde K.
Kawamoto, Owen N.
Kawamoto, Wayne T.
Kim, Walter P.H.
Kimura, Bruce K.
Kitkowski, Gary
Kutara, Brian I.
Kuwabara, James S.
Kwok, Samuel C.H.
Lai, Janice
Lam, Kwok C.
Lao, Chi Cheong
Lao, Louis K.C.
Lau, Chi Kwan
Lau, Edmund W.
Lau, Howard K.C.
Lee, Shiu Por
Lee, Wesley K.K.
Leong, Timothy
Leu, Dwight P.
Ling, Louis L.
Lu, Kelvin M.K.
Lung, Bradford L.
Makiya, Michael S.
Mashiba, Richard I.
Matsuba, Dana K.
Matsuyama, Milton
Matute, Albert
Mikasa, Michael H.
Miyata, Kenneth K.
Morita, Cleven A.
Morita, Hugh Y.
Murakami, Stephen V.
Muraki, Alan F.
Nagamine, Ralph M.
Nagasawa, Earl I.
Nakamura, Donald F.
Nakamura, Harlan T.
Nakamura, Myles N.
Ng, Samson C.S.
Niwa, Joyce C.
Nohara, Rodney H.
Nomura, Robert
Okada, Paul M.
Oshiro, Avin S.
Pagan, Martin Jr.
Pai, Michael D.S.
Pang, Henry B.H.
Paxson, Dennis
Poo, David T.
Rahi, Mumtaz R.
Richardson, James C.
Saruwatari, Calvin
Sato, Wallace K.
Segawa, Wesley R.
Seng, Emilio D.
Shih, Eddie C.
Shinsato, Mitsuo
Shioi, Warren T.
Shono, Brian K.
Silva, Donald W.
Shiu, Gary K.S.
So, Edward Y.
Soma, Izumi
Suzuki, Clayton S.
Suzuki, Warren A.
Taira, Daniel I.
Takanishi, Dale K.
Takenouchi, Glen H.
Takushi, Lee T.
Tam, Allyn H.C.
Tam, Leroy H.W.
Tamaye, Elaine E.
Tamayori, Nolan T.

Tamayori, Roy Y.
Tan, Ignacio A.
Tang, Chungshing
Taniguchi, Duane
Taniguchi, Glen R.
Tau, Kenneth W.O.
Thippavong, Visith
Toba, Bert R.
Tokuyama, Russell C.
Tom, Alan P.S.
Tsunezumi, Minnie N.
Uyehara, Dean K.
Williams, Ernest V.J.
Wilson, Steven K.
Won, Delmond J.H.
Wong, Clayton Y.
Wong, Kevin K.O.
Wu, Cho C.
Yamada, Lloyd S.
Yamane, Calvin K.
Yamase, Melvin N.
Yokota, Clyde K.
Yokoyama, Curtis
Yokoyama, Glenn
Yoshida, Stephen K.
Young, Susan L.
Yuen, Walter K.
Zane, Stephen K.S.

1975-76

Akita, Dean T.
Awada, Wendell S.
Barboo, Joseph B.
Bow, Daniel M.C.
Bow, William H.Q.
Burian, Jack R.
Byerly, Ira K.
Carranza, Gene S.
Chan, Peter Y.H.
Chau, Wing C.
Cheng, Ronald C.K.
Ching, Clarence J.C.
Ching, David K.T.
Ching, Debra Y.
Ching, Gary M.T.
Chiu, Kwok F.
Choi, Jae Ho
Chung, Darrell Y.H.
Clemente, Edward P.
Dabell, Stanley D.
Dayao, Manuel S., Jr.
Dissanayake, Tilak B.
Doi, Bryan C.
Dumlao, Christino, Jr.
Faufata, Omar J.
Frankel, Charles
Fujihara, Neal H.
Fujinaka, Aaron K.
Fujino, Hansel Y.
Fujise, Stanley H.
Fujiwara, Dean H.
Fukuda, Lester H.
Fukumoto, Ronald M.
Funai, Riyoji
Gima, Tomohide
Harris, Gary A.
Hashiro, Brian S.
Hayashi, Randall N.
Heu, Herbert D.
Hiratsuka, Ken T.
Hirose, George S.
Homfeld, Charles G.
Hsu, Robert Y.S.
Ikezaki, Gilbert F.
Inouye, Bruce H.
Inouye, Guy M.
Inouye, Paul N.
Iwata, Jon S.

Kagamida, Keith K.
Kageura, Harold K.
Kaiharu, Patrick H.
Kanayama, Michael K.
Kanda, Clifford T.
Kaneshiro, Ralph T.
Kanno, Neil
Kawamoto, Darek T.
Kobata, Karl M.
Kobayashi, Rodney R.
Kohatsu, Marvin N.
Koo, Chungshing
Kuga, Roy M.
Kunihiro, Stephen H.
Kuroda, Terry S.
Kutara, Brian I.
Kwok, Tszehang W.
Lam, Lawrence K.
Larson, Lowell V.
Lee, Leland Y.S.
Lee, Stephen W.
Leong, Rodney S.C.
Loo, Thomas C.K.
Lum, James C.L.
Lum, Marshall H.Y.
Lum, Stanley M.S.
Magaoay, Michael Y.
Mashiba, Richard I.
Matsuno, Raymond T.
Matsuoka, Milton J.
Mikasa, Michael H.
Mina, Rudolph
Miura, Benjamin M.
Miyoshi, Dennis M.
Mondoy, Patrick M.
Moriyama, Glenn T.
Mukai, Russell K.
Murakami, Gary T.
Muranaka, Ken T.
Nagano, Michael
Nakagawa, Roy Y.
Nakamura, Gary T.
Nakamura, Lloyd C.
Nakano, Donald K.
Nakaoka, Dennis H.
Nakaoka, Harold T.
Nakata, Mathew M.
Nakayama, Stanley M.
Ng, Gilbert Y.K.
Nishimoto, Lloyd Y.
Nishimura, Craig I.
Nishimura, Jon K.
Nishioka, Owen M.
Nomura, Robert
Ogan, Michael C.
Okada, Alan T.
Okaneke, Randall S.
Okimoto, Myron T.
Ong, Johnny
Osaki, Herbert H.
Oshiro, Steven
Pang, Halford W.H.
Pang, Maynard C.L.
Pang, Ronald C.L.
Parker, Guy W.
Poo, David T.
Raralio, Rudy L.
Saito, Carlton T.
Sakai, Gloria M.
Sakamoto, Roy K.
Schuster, Charles G.
Shak, Arthur T.
Sherman, John K.
Sheung, Guan Y.
Strain, Efen C.
Suehiro, Daniel M.
Sumida, Stephen G.
Suzuki, Jonathan M.

Takara, Russell H.
Takemura, Theodore T.
Takishita, Glen Y.
Tanaka, Dennis H.
Tasato, Gary T.
Tau, Kenneth W.O.
Taylor, William A.
Thippavong, Pirith
Tully, Gregory B.
Uchida, Norman M.
Uchimura, Lane K.
Urada, Wayne T.
Walter, David J.
Wine, Jan W.
Wong, Chin W.
Yamamura, Michael M.
Yamashiro, Gil T.
Yamauchi, Glenn T.
Yanamine, David Y.
Yoshimura, Edward I.
Young, Jeffrey A.
Zukemura, Allen M.

1976-77

Abing, Amrit
Agsalda, Renie P.
Aratani, Brian T.
Arikawa, August Y.
Atta, Glenn K.
Au, Roger A.
Cabalce, Kenneth A.
Chan, Cheung Y.J.
Chan, Wing M.
Chang, Allen K.
Chang, Herbert W.L.
Chiu, Kok L.
Choy, Wendell C.K.
Chu, Geoffrey
Chun, Cedric J.K.
Chun, Stephen Y.F.
Chung, Charlene K.
Chung, Michael M.C.
Chur, Stanford M.
Davis, Karen
Enomoto, Neal Y.
Evans, Donald E.
Fong, Dennis I.K.
Fujii, Harold T.
Fujimoto, Craig K.
Fujimoto, Donald M.
Fujimoto, Pamela K.
Fujisaki, Eric M.
Fukuda, Jon T.
Fukumitsu, Gregory S.
Fukushima, Harvey Y.
Goo, Gary W.
Gota, Gordon T.
Goto, Tom H.
Hamada, Brian T.
Hamamoto, Dale H.
Hashisaka, Edwin H.
Hee, George J.
Hess, Brian W.
Honbo, David M.
Horikawa, Phyllis A.
Ichiyama, Joy Y.
Ishizuka, Howard E.
Kagawa, Glenn C.
Kakemoto, Wallace
Kanai, Warren S.
Kawamoto, Neal W.
Kikuchi, Mark K.
Kim, Ernest M.
Kimura, Sharon F.
Kinoshita, Michael H.
Kobayashi, Glen Y.
Kong, Nathan S.L.
Kong, Raymond W.M.

Yoneda, Michael N.
Yonemoto, Arthur M.
Yoneshige, Steven
Yoshida, Michael M.
Yoshimura, Michael T.

1971-72

Ageno, Wilfred S.
AhYo, Gerald P.
Anzai, Bert H.
Aoyama, Marc M.
Arita, David K.
Arizumi, Thomas
Awa, Ivan Y.
Benevides, Francis L.
Bareng, Bobby A.
Cabanalit, William, Jr.
Chan, Shiu L.
Chang, Stanton A.
Chang, Stephen K.
Chang, Vernon W.T.
Chemistruck, Ronald S.
Chen, James D.W.
Chin, Harvey
Ching, Brian A.
Ching, Terrence K.J.
Chokvanitphong, Somkid
Chong, Kevin Y.F.
Chow, Allan K.K.
Choy, Norman C.H.
Chung, Dennis T.S.
Desroches, Edward B.
Doughty, David W.
Ebisu, Lloyd T.
Emmerson, John G.
Fong, EngKwee
Fujimoto, Stanley
Fuke, Michael A.
Fukuhara, Ronald C.
Galang, Sean
Gakiya, Raymond
Gima, Takeharu
Hamada, Cyril M.
Hamamura, Kerry M.
Hamayasu, Toru
Hanzawa, Howard T.
Harada, Kenneth Y.
Haraki, Warren S.
Hasegawa, Allan T.
Hayashi, Edwin M.
Higa, Thomas S.
Hiyama, Roy M.
Ho, Chee Wai
Hoontrakul, Bandhit
Houda, Pavel
Ikeda, Jeffrey W.
Inefuku, Rodney M.
Inouye, Randall R.
Ishida, Howard T.
Itano, Rory
Iwamoto, Keith K.
Iwasaki, Leighton S.
Izumi, Toru
Kan, Ronald
Kanda, Larry M.
Kaneshige, Roy S.
Kaneshiro, Dennis T.
Kasamoto, Michael K.
Kasaoka, John
Kawaguchi, Robert
Kawaharada, Michael K.
Kayum, Mohammed N.
Kimura, Stanley T.
Kinoshita, Charles M.
Ko, Peter Y.
Kobashikawa, Fred A.
Kodama, Lester A.
Kohistani, Ghulam R.

Kojima, Gilbert
Kollias, Tasos
Kum, Kenneth Y.K.
Kunishige, Alvin
Lai, David M.K.
Lai, Kenneth S.
Lam, Kwai Sheung
Lau, Phillip
Lau, Thomas K.C.
Lee, Gordon K.F.
Lee, Ronald Y.K.
Lee, Yewkeong
Like, William E., Jr.
Lin, Yu Hao
Loo, Jeffrey J.
Loui, Raymond K.S.
Lum, Chin Ming
Lum, Gerald C.F.
Lum, Vernon H.M.
Madolora, Willy B.
Masaki, Wayne T.
Masuno, Daniel K.
Masutani, Benjamin R.
Matsumoto, Glenn A.
Matsumoto, Thomas M.
Matsunaga, Wayne Y.
Matthews, Daniel H.
Maxton, Emil
McNesby, John B.
Miyamoto, Ross
Miyasato, Andrew
Miyashiro, Thomas K.
Mizushima, Roy
Moriki, Stephen K.
Morimoto, Clyde H.
Moss, Richard M.
Murashige, Michael I.
Murata, Kent
Nagata, Clyde H.
Nakamoto, Wayne S.
Nakamura, Edgar H.
Nakamura, Neal Y.
Nakamura, Ray K.
Nashiro, Seitoku
Ng, Julian
Nishiguchi, Herbert N.
Nishimoto, Gary M.
Obayashi, Joel H.
Oda, Wayne H.
Okawa, Dwight M.
Okawa, Ronald T.
Okuda, George
Otake, Arthur T.
Otoman, Gene
Oyama, Glenn D.
Padayhag, Sanito
Pang, Clayton
Pavao, Milton D.
Peters, Robert
Rutsch, Richard P.
Sakai, Ronald S.
Sakai, Shelley S.
Sakamoto, Gregory Y.
Sakumoto, Gary M.
Sandhusen, Henry
Sato, Vernon K.
Scott, Douglas A.
Shigeoka, Wayne M.
Shimabukuro, Stanley
Shimizu, Stanley S.
Shimomura, Melvin T.
Shinsato, Lawrence
Shiu, James C.Y.
Short, Steve E.
Sinclair, David L.
Siu, Howard W.
So, Jinoh
Sonobe, Ivan I.

Stanley James E., Jr.
Stoman, Sayed H.
Suetsugu, Alan M.
Sumitomo, Robert M.
Tada, Norman K.
Takamiya, Glenn
Takushi, W.T.
Tamura, James M.
Tao, Wallace S.
Tawata, Shinjin
Taylor, Livingston N.
Teruya, Kenneth K.
Thompson, James H.
Tift, William V.
Tinh, Nang N.
Toyofuku, Ralph
Tsukada, Wilfred
Tsutahara, Melvyn T.
Uchida, Vernon K.
Uemoto, Gary S.
Uyeda, Miles M.
Vanthanourath, Vangchanh
Wakabayashi, Marvin
Wong, Dominic W.K.
Wong, Ronald C.C.
Wong, William L.
Yamada, Miles S.
Yamada, Reggie H.
Yamasaki, Milton
Yamashita, Wayne T.
Yao, Anthony C.
Yap, Carleton
Yatagai, Alan
Yee, Dexter S.H.
Yee, Ronald
Yeh, Richard
Yoshimoto, Shigeru
Yoshioka, Leslie
Young, Hiram M.
Young, Marvin F.
Young, Steven C.

1972-73

Ajitomi, Henry H.
Akai, Gerald
Akimoto, Brian T.
Amimoto, Rhys
Arita, Roy K.
Arnold, William
Asing, Darrell K.
Aylward, Henry W.
Badua, Rolland M.
Bainsjordan, John W.
Brown, Edwin M.
Chagi, Roy H.
Chang, Creighton S.
Chang, Hubert W.
Cheng, Chi Chuen
Ching, Randall M.Y.
Chu, Simon C.C.
Chun, Gary W.C.
Chun, George C.K.
Chun, Randall K.B.
Cooley, Andrew S.
Craddick, David E.R.
Estes, Steven A.
Fok, Daisy T.
Fujioka, Masanobu R.
Fukunaga, Paul S.
Funasaki, Gary I.
Fung, Frank C.P.
Goo, Cleighton K.Q.
Hall, William M.
Hamano, Melvin J.
Heu, Vernon B.
Heung, Alain N.
Higa, Marjorie M.
Higa, Ronald K.

Higham, John L.
Hirano, Andrew J.
Hirano, Glenn M.
Ho, Dominic K.F.
Ho, Roger C.C.
Honea, James M.
Hong, Daniel S.C.
Horinouchi, Gary T.
Ikei, Norman T.
Inouye, Dennis T.
Ishida, Ronald T.
Ishii, Royden I.
Ishimaru, Ronald Y.
Isobe, Russell R.
Iwane, Roy K.
Kaku, Naoki
Kam, Alvin Y.H.
Kamura, Alan Y.
Kanemori, Raynard
Kaniho, Daniel K.
Kao, Jim K.
Kawano, Wayne T.
Koga, Steven Y.
Konno, Stanley K.
Kuba, Galen M.
Kudo, Wallace M.
Kugiya, Bruce
Kumabe, Clyde K.
Lam, Calvin K.M.
Lee, Charles S.W.
Lee, Herbert K.C.
Lee, John F.
Lee, Robert K.
Leong, Alvin J.T.
Leong, Patrick J.
Lui, GeeLup
Lui, Wealand
Lum, Glenn T.
Ma, John Y.
Manzano, Arnaldo L.
Mark, Bennett W.
Maruyama, Alan H.
Matsuo, Claude N.
Matsuoka, Masakatsu
Mente, Earl S.
Miyagawa, Vincent K.
Miyamura, Harvey K.
Miyasaki, Bryce K.
Momohara, Daniel S.
Nakamura, Charles I.
Nakasato, Lester
Nakamura, Wesley K.
Nishino, Roy N.
Nitahara, June J.
Obayashi, Kenneth
Ogasawara, Norman M.
Okada, Andrew S.
Okada, Vernon S.
Okamura, Dennis I.
Okazaki, Harvey H.
Omori, Andrew S.
Otoide, Bill M.
Ottoson, Lars E.
Oyama, Bert K.
Patel, Kiritkumar C.
Perreira, Ronald
Racelis, Pedro E., II
Sakima, Brian M.
Sakuda, Gerald K.
Sanderson, Ronald R.
Sasaki, Robert T.
Sato, Wesley H.
Shimozono, Gary S.
Shin, Malcolm B.
Shiroma, Conrad T.
Shishido, Chester M.
Sim, Henry W.
Simpliciano, Francisco A.

Sisounthone, Khamphone
 Smith, David C.
 Soon, Nicholas Y.
 Stevens, Warren R.
 Sue, Kuiwan M.
 Suehiro, Marshall K.
 Sugai, Brant
 Sugihara, Alan B.
 Tachibana, Ronald M.
 Takakura, Melvin T.
 Takamori, Gordon S.
 Takanishi, Claude K.
 Takemoto, Thomas T.
 Takeshita, Rodney K.
 Tam, Joseph A.
 Tang, Ronald
 Taniguchi, Ronald M.
 Tanouye, Larry Y.
 Tanouye, Perry A.
 Togashi, Glenn K.
 Ueno, Tomohiro
 Uyeno, Rodney T.
 Victor, David H.
 Watanabe, Alan K.
 Wilkinson, Larry F.
 Wilson, Stephen B.
 Wong, Daniel Y.Y.
 Wong, Peter P.K.
 Wong, Stephen W.K.
 Wong, Wayson W.S.
 Wun, Enoch W.K.
 Yabusaki, Lynne S.
 Yamada, Kenneth T.
 Yamamoto, Ann T.
 Yamamoto, Dean S.
 Yamamoto, Ralph J.
 Yamanaka, Myles H.
 Yamanouchi, Glenn T.
 Yamaoka, Clifford M.
 Yeung, Pui C.
 Yim, Spencer K.
 Yong, Sterling S.
 Yorimoto, Dennis T.
 Yoshida, Brian S.
 Yoshida, Ranceford S.
 Yoshida, Steven K.
 Young, James M.Q.
 Young, Russell K.

1973-74

Actouka, Marcelino K.
 Adachi, Athan K.
 Agena, Alvin S.
 AhSam, Edward J., Jr.
 Akiyama, Douglas K.
 Antonio, Quirino
 Asato, Dennis K.
 Azuma, Dennet M.
 Borkowski, Thomas J.
 Catone, Neil D.
 Chan, Dominic S.T.
 Chang, Gordon L.
 Chen, Wu T.
 Cheong, Herbert H.C.
 Ching, Clifton S.Y.
 Ching, Gary W.S.
 Chiu, Darryl M.
 Chun, Arlan H.L.
 Chun, Stanley
 Costa, Leonard J.
 Craddick, David E.
 Dang, Philip
 Ege, Stephen T.
 Fernandez, Richard
 Fong, Steven K.L.
 Fujii, Ronald H.
 Fujimoto, Myron T.
 Funai, Masami

Fung, Chi T.
 Gibo, Stanley
 Gouveia, Michael P.
 Gross, Kenneth B.
 Green, William J.
 Hagino, Randy I.
 Hamada, Wayne Y.
 Harada, Harry I.
 Harada, Michael A.
 Hermann, Jeffrey D.
 Hiraki, Earl C.
 Hirouji, Wallace T.
 Hite, Charles C.
 Ho, Kwok Chan
 Hunt, Rollie E.
 Ibaraki, Ronald
 Ibrahimkhail, Abdul K.
 Ichinose, David K.
 Ikerd, Richard G.
 Ikuta, Gary K.
 Imamura, Joy N.
 Imaoka, Ersten Y.
 Inake, Claude K.
 Inouye, Alan T.
 Irei, Roderick Y.
 Ito, Edward K.
 Iwane, Howard M.
 Iwashita, Masanobu
 Iwata, Nathan K.
 Iwata, Paul Y.
 Johnson, Bertram G.
 Jose, Raul
 Kaitoku, Chester A.
 Kam, Gerard K.S.
 Kamaura, Wayne T.
 Kaneshiro, Wayne H.
 Kawakami, Wallace M.
 Kawaoka, Daryl K.
 Kaya, Jocelyn C.
 Kido, Howard T.
 Kikuta, Malcolm Y.
 Kim, Edward B.K.
 Kimura, Dee Y.
 Kimura, Glenn I.
 Kinoshita, Barney H.
 Kishimoto, Michael K.
 Kobayashi, Stanley H.
 Komoto, Clifford
 Kondo, Cary K.
 Kong, Wendell M.T.
 Kuioka, Gordon M.
 Kutaka, Milton D.
 Kwok, Chungyan
 Lam, Vincent C.H.
 Lau, Owen H.K.
 Lau, Patrick S.W.
 Lee, Benjamin K.B.
 Lee, Bing H.
 Lee, Dick K.
 Lee, Hon Ying
 Lough, John B.
 Lum, Gordon G.W.
 Lum, Leighton W.
 Lum, Matthew K.S.
 Lum, Peter K.
 Ma, Henry L.
 Maeshiro, Calvin K.
 Marumoto, Boyd T.
 Mashima, Ken I.
 Masuno, Lawrence H.
 Matsuda, Robert K.
 Matsumoto, Paul S.
 Matsuura, Leslie M.
 Mau, Harold J.L.
 Miller, Robert H.
 Mitsunaga, Mark M.
 Miyakawa, Sidney
 Miyaoka, Lester H.

Miyasato, Clyde S.
 Miyashiro, Glenn M.
 Miyashiro, Warren S.
 Miyoshi, Eugene
 Mizushima, Vern A.
 Mondik, Frank J.
 Morales, Leonard W.
 Morimoto, Edmund F.
 Morris, Robert H.
 Murakami, Kenneth T.
 Murata, Donald T.
 Nagata, David J.
 Nagata, Leslie M.
 Nakagawa, Arthur T.
 Nakahara, Kenneth M.
 Nakahara, Yasuaki
 Nakamura, Sanford R.
 Nakamura, Wayne Y.
 Nakashima, Michael H.
 Nakashima, Wayne S.
 Nakatsuka, Ivan K.
 Nekota, Sachio
 Nikaido, Darwin Y.
 Nishimura, Dennis M.
 Nishimura, Morris H.
 Noborikawa, Robert M.
 Nohara, Glenn M.
 Nunokawa, Alan T.
 Ng, Earl W.M.
 Oehrlein, Douglas L.
 Oguma, Shohei
 Okazaki, Dennis Y.
 Omaye, Tetsu
 Ormine, Edward T.
 Onishi, Miles K.
 Oshiro, Richard S.
 Pang, Leslie M.
 Pegarido, Jose V., Jr.
 Perreira, Kenneth
 Pho, Bach Hoang
 Pratt, William L.
 Pyles, Troy K.
 Sato, Carl Y.
 Seeley, Theo R.
 Shido, Rodney S.
 Shimata, Wayne H.
 Shimamoto, Alan J.
 Shimazu, Carl N.
 Shimoji, Hiroshi
 Shinmoto, Donaly Y.
 Shiu, Michael J.
 Shoji, Lester T.
 Soken, Herbert M.
 Souza, Leroy
 Stewart, John A.
 Sugihara, Alan W.
 Sugai, Stanley I.
 Takemura, Stanley T.
 Tamabayashi, Wesley K.
 Tamashiro, Alan M.
 Taniyama, Leslie
 Toma, Allen K.
 Tomihara, Clyde Y.
 Tomiyoshi, Glenn D.H.
 Toyofuku, Lance K.
 Tsutsui, Roy T.
 Uratani, James S.
 Vincent, Anthony J.
 Vendetta, Thomas S.
 Wada, Wayne T.
 Watabu, Vincent K.
 Watanabe, Milton
 Wible, Gary L.
 Wohlers, Carl H.
 Wong, Charles C.H.
 Wong, Chewon
 Wong, David J.
 Woo, Yuenkeung E.

Wu, Yiu W.
 Yamagata, Gary Y.
 Yamamoto, Dennis Y.
 Yamamoto, Ronald Y.
 Yap, Yew Wah
 Yeung, Kung Chung
 Yorimoto, Don J.
 Yoshikawa, Craig T.
 Yoshimura, Arthur A.
 Yoshinaga, Glenn H.
 Young, Jonathan N.
 Young, Timothy D.F.
 Yuen, Brooks H.M.
 Yun, Alice M.

1974-75

Ahtoong, Edward
 Akiyoshi, Andrew M.
 Arakaki, Gerald K.
 Arakaki, Wayne T.
 Asamura, Tommy K.
 Austria, Duane A.
 Boswell, Michael J.
 Chan, Irvin S.
 Chan, Kin Lek
 Chang, SekYee
 Chang, Wesley H.P.
 Chanthavisouk, Bounthay
 Cheng, Shiao L.
 Cheng, Timothy S.
 Cherry, John M.
 Chinen, Kiyoshi
 Ching, Arnold, Jr.
 Ching, Stanley M.O.T.
 Chiu, David K.C.
 Choi, Joseph C.K.
 Chong, Rodney K.F.
 Choy, Rodney J.
 Choy, Yee Chung
 Chu, Lester
 Chung, Darrell Y.H.
 Chung, Man Shek
 Coombs, David F.
 Deguzman, Hilario D.
 Ebisu, James N.
 Fong, Kenneth Y.K.
 Fujimoto, Keith K.
 Fukuda, Joyce
 Fung, Pikchi
 Furuhashi, Kyle S.
 Greene, Vibert F.
 Hamaguchi, Wayne M.
 Hamamoto, Gregg K.
 Hara, Dennis K.
 Hasegawa, Glenn K.
 Higashi, James Y.
 Higuchi, Blake T.
 Hirokawa, Rodney T.
 Hishinuma, Craig T.
 Ho, Chipiu A.
 Ho, Nai K.
 Ho, Winston
 Honda, Clifford T.
 Honda, Steven C.
 Hong, Douglas W.W.
 Horimoto, Harold H.
 Ikawa, Milton M.
 Inouye, Ralph T.
 Ishikawa, Eric M.
 Itagaki, Lloyd J.
 Johnson, Lloyd W.
 Kam, Gregory C.
 Kamelamela, Joseph K.
 Kameya, Clifford N.
 Kamikawa, Neil T.
 Kamite, Dennis T.
 Kaneshiro, Melvin M.
 Kaplan, Gary M.

Kubota, Douglas
Kuniyuki, Alan A.
Lam, Lester H.
Lau, Nancy Jean
Law, Kincho H.
Liu, Edward K.F.
Lum, Howard B.
Martin, Stephen W.
Marumoto, Larky T.
Mato, Stanton
McGarry, William D.
Mikasa, Marc R.T.
Miura, Norman H.
Miyamoto, Joyce R.
Morikawa, Ken K.
Morita, Ralph
Moriwaki, Bruce T.
Muramoto, Lawrence H.
Muranaka, Ruth R.
Nakagawa, Bert H.
Nakamoto, Riki A.
Nakamitsu, Melvin S.
Nakamura, Daniel M.
Nakamura, Darryl H.
Nakamura, Wayne H.
Nakashima, Ross
Ng, Clinton H.P.
Nguyen, Duyet M.
Nishimura, Deane M.
Okada, Glenn H.
Okazaki, Eric T.
Oldford, Richard L.
Otake, Stuart K.
Pang, Stephen C.I.
Ralston, Arthur W., III
Rican, Robert E.
Saito, David M.
Salvail, James R.
Sasaki, Roslyn K.
Sato, Glenn S.
Sato, Steven T.
Schiaivoni, Richard F.
Shin, John S.O.
Shioji, Roy A.
Siu, Richard Y.H.
Smith, Austin C.
Songsong, Jose A.
Stone, Dennis A.
Sunada, Fred
Sung, DoYoung
Suzuki, Glenn Y.
Tanabe, Winslow I.
Tanaka, Bryan I.
Tanaka, Darryl A.
Tanaka, Randal T.
Thant, Myo
Tokumoto, Calvin Y.
Tong, Yuenkeung A.
Torigoe, Randall M.
Tsutsumi, Mark A.
Umetsu, Wendell M.
Urabe, Edmund M.
Uyeda, Chuck K.
Uyehara, Kyle T.
Wakumoto, Stanley N.
Wong, Waiming
Yadao, Gordon
Yoshioka, Harvey Y.
Yuen, Nathan Q.S.
Yung, Gerald Y.T.

1977-78

Ahlo, Ainsley
Ajitomi, Robert K.
Akazawa, Kelvin K.
Albright, Barry W.
Anderson, Harvey C.W.
Arakaki, Gary K.

Arakawa, Duane T.
Arakawa, Thomas T.
Asao, Westford S.
Azama, Genei
Baugartner, Craig A.
Cajigal, Ferdinand M.
Chan, Alfred K.C.
Chan, Hon W.
Chan, Mina S.M.
Chang, David J.W.
Chang, Terence C.W.
Char, Clinton Y.W.
Ching, Lawrence W.B.
Ching, Rodney D.H.
Choy, Paul I.M.
Choy, Yeuk Y.
Chun, Kerry K.Y.
Chun, Wendell H.
Dias, Rodney J.
Doi, Donnette
Ebesu, Mark K.
Ebisu, Keith M.
Endo, Howard K.
Fujii, Robert H.
Fujimori, Lynne N.
Fujimoto, Don S.
Fujinaka, Myles N.
Fujioka, Ranold I.
Fukushima, Curtis K.
Galicinao, Domingo C., Jr.
Gotanda, Vern J.
Green, Stephen C.
Hartanto, Martin K.
Heewai, Kurt D.
Heywood, Steven C.
Higa, Ross T.
Higuchi, Wayne K.
Hihara, Linda M.
Hirata, Robin H.
Ho, Hannah N.L.
Ho, Stanley K.L.
Hong, Gregory R.
Ishii, Alden K.
Ishii, Dexter K.
Isobe, Glen H.
Itamoto, Randy K.
Iwamasa, Lester A.
Iwamoto, Stanford M.
Iwata, Denis M.
Jacob, Celestino B., Jr.
Jacoby, Reily M.
Kam, Robert J.
Kamaka, Edmund T.
Kamigaki, Hal K.
Kaneshige, Keith S.
Kanno, Michael H.
Kashiwagi, Dean
Kau, Bruce K.
Kaulupali, Rodney K.
Kaya, Lawton N.
Kerr, Ronald W.M.K.
Komo, Lance S.
Knudsen, Chris J.
Korenaga, Kendall Y.
Koshiro, Ken Y.
Kudo, Rance T.
Kung, Mungkit S.
Kuniyuki, Valerie A.
Kuo, George V.Y.
Kurashima, Thomas K.
Kurihara, Randal S.
Kuriyama, Kent K.
Kwok, David W.Y.
Kwok, Kenneth C.K.
Lancaster, Mark S.
Lau, Ernest Y.W.
Lau, Tinchor E.
Lee, David W.K.

Lee, Karen M.L.
Leong, Sonny
Lines, Jeffrey K.
Luke, Russell K.H.
Ma, Anston K.Y.
Mailolo, William K.
Masui, Myles S.
Masutani, Stephen M.
Matsukawa, Gene S.
McNulty, Michael
Minami, Carol R.
Miranda, Alfredo Q., Jr.
Mita, Randal M.
Miyamoto, Eric K.
Miyamoto, Stephen H.
Miyashiro, Daniel W.
Morikawa, Daniel H.
Morimoto, Paul S.
Morisaki, Danny Y.
Motoda, Daryl S.
Mukai, Steven M.
Nagai, Walter T.
Nagamine, Norman K.
Nago, Shereen S.
Nakajo, Craig M.
Nakamura, Peter M.
Nakasone, Earle H.
Nakayama, Gary Y.
Ng, Delfin W.K.
Nguyen, Bao Q.
Nitta, Jonathan T.
Ogata, Owen K.
Okada, David N.
Onaka, Charlene M.
Ota, Sanford T.
Otomo, Stacy A.
Parker, Robert C.
Quarto, Dennis C.
Rohde, Kenneth R.
Saiki, Bryson S.
Saito, Doyle S.
Sakai, Mitchell Y.
Sakamoto, Wesley T.
Sakima, Owen S.
Singleton, Jan G.
Siu, Victor K.Y.
Somedra, Derek T.
Sone, James M.
Soutavong, Sinthavone
Sugihara, Donna L.
Tahata, Alan S.
Tajima, Rodney T.
Takamura, Eric S.
Takara, Wayne J.
Takashige, Chris T.
Takeuchi, Jeffrey A.
Tamura, Miles K.
Tanaka, Grant A.
Tang, Chakbun
Tanimoto, Jeffrey K.
Tanimura, Thomas Y.
Thuet, Darro J.
Tokuda, Russell S.
Tokunaga, John T.
Toyama, Daniel H.
Tsang, Tatchee D.
Tsutsui, Wesley M.
Umeda, Alan Y.
Ushijima, Ronald S.
Uyema, Raymond H.
Watanabe, Colin S.
Watanabe, Karen K.
Won, Wyatt H.S.
Wong, Benedict D.
Wong, Bryant W.C.
Wong, Henry P.H.
Wyatt, Elston, Jr.
Yabusaki, Steven B.

Yamada, Steve T.
Yamaguchi, Neil M.
Yamamoto, Yvonne E.
Yasui, Aaron H.
Yi, Yongwan
Yogi, Jerry
Yoneda, Lan R.
Yoshimori, James A.
Young, Robert K.W.Y.
Yung, Chung C.

1978-79

Abe, Roy K.
Adachi, Rian M.
Ah Yo, Clayton J.
Allison, John S.
Amuro, Wayne T.
Anzai, Dale J.
Arakaki, Eric M.
Asuka, Michael T.
Au, Eric W.K.
Au, Roland Y.C.
Au, Warren H.T.
Chan, Cho Lik
Chan, Kai Kin
Chan, Wai Lik
Chan, Wooncheung
Ching, Clayton D.L.
Chiu, Yuechung
Chock, Gary Y.K.
Chong, Bryan K.W.
Chow, Eric K.S.
Chow, Haysum
Chowhoy, Alan
Chun, Randall K.W.
Chun, Westley K.C.
Corrales, Benjamin
Dang, Wendell T.Y.
Date, James T.
Diniz, Stanley J.
Enomoto, Francis Y.
Feehan, Robert D.
Fong, Malcolm M.K.
Fujii, Daniel Y.
Fujii, Neil S.
Fujimoto, Owen K.
Fujita, Gary K.
Fujita, Michael I.
Ginoza, Michael A.
Goto, Arnold K.
Governale, John G.
Goya, Pamela Ann S.
Hamada, Eric E.
Hamada, Lester K.
Hamamoto, Charlene S.
Hee, Eric N.S.
Hettick, Dennis A.
Hidano, Lance A.
Hirano, Eric T.
Hirayama, Melvin J.
Ho, Man W.
Hoch, Richard A.
Horikawa, Walter T.
Howard, Edgar S.
Ibana, Scorro A.
Ige, Brian H.
Ige, David Y.
Imada, Dennis T.
Ishii, Brian T.
Iwamoto, Craig M.
Iwamoto, Stanley K.
Johnson, Donald L.
Kagawa, Tyrus I.
Kanemoto, Lynn Y.
Kaneshige, Donald T.
Kim, Gregory L.
Kinal, John L.
Kishi, Hugh K.

Kitamura, Ellen E.
 Kleinschmidt, Dale L.
 Kutaka, Michael T.
 Kwan, Po Sang
 Kwan, Tak Yin
 Kwok, Loongpiu
 (Lau, Glen Y.F.)
 Lau, Leonard S.C.
 Lau, Norman R.
 Lau, Richard H.M.
 Lee, Alan G.
 Lee, Randall Y.H.
 Lee, Rodney K.F.
 Lee, Yuk She R.
 Li, Wai Ping
 Li, William K.H.
 Lo, Tak Lok E.
 Loh, Chung Dzong L.
 Longboy, Reynaldo G.
 Look, Leighton B.C.
 Loui, Brendan D.
 Lui, Stanley H.H.
 Lum, Chester G.H.
 Ma, Eugene K.L.
 Ma, Kam Lau H.
 Ma, Leung Hoi J.
 Martin, James M.
 Martin, Timothy P.
 Masutani, Gail K.
 Michioka, Dean I.
 Miyachi, Craig S.
 Miyasawa, Richard T.
 Miyashiro, Gail K.
 Miyashiro, Jon K.
 Miyashiro, Lloyd T.
 Miyata, Gary T.
 Mizokami, Clinton H.
 Nakagawa, Alvin H.
 Nakamoto, Reginald T.
 Nakashima, Vickie M.
 Ng, Casey Y.K.
 Nishime, Kazunobu
 Noborikawa, Curtis M., Jr.
 Noda, Gerald M.
 Oda, Sanford M.
 Odo, Zenith H.
 Ogi, Irving S.
 Oguro, Keith K.
 Okamoto, Alan T.
 Olinger, Shirley J.
 Ota, Gerald M.
 Owens, Gertrude C.
 Oyama, Lance S.
 Pang, Daryl W.F.
 Pollard, Clifford M.
 Saiki, Kirk I.
 Saka, Paul M.
 Sakima, Phillip N.
 Sakanashi, Craig H.
 Sakuda, Ross H.
 Samaritano, Robert A.
 Sawa, Edwin N.
 Seki, Gerald H.
 Shigano, Cheryl H.
 Shigemoto, Alan K.
 Shigeoka, Ralph S.
 Shimabukuro, Gary K.
 Shin, Del J.
 Smith, William F.
 Soares, Patrick L.
 Suen, Kam Hon E.
 Sugai, Carolyn M.
 Sugiyama, Sam K.
 Sun, Edward B.T.
 Swartz, John C.
 Takaki, Jason H.
 Takashita, Michael H.
 Takushi, Cris T.

Tam, Pamela A.
 Tanaka, Denise
 Tanaka, Jill C.
 Tang, Brian B.
 Tanoura, Alan T.
 Tehada, Thomas J.
 Toba, Rodney A.
 Togami, Steven T.
 Tomosada, Neil
 Toyofuku, Michael T.
 Tsang, Chin Wing T.
 Uyesugi, Susan S.
 Wakumoto, Ralph M.
 Wine, Jerry P.
 Won, Dorinda Y.H.
 Wong, Kiman K.L.
 Wong, Randall K.S.
 Yamada, Russell T.
 Yamagata, Neil S.
 Yamamoto, Bert A.
 Yamashita, Cary K.
 Yanagihara, Linda A.
 Yano, Miles K.
 Yasuhara, Warren K., Jr.
 Yip, Melvin W.
 Yorita, Mark K.
 Yoshimoto, Alan K.
 Yoshino, Earl D.
 Yoshioka, Wayne Y.
 Young, George P.
 Yu, Honbor
 Yuen, Ting J.
 Zenigami, Curtis S.

1979-80

Abe, Ted S.
 Aoanan, Virgilio C.
 Arakaki, Melvin M.
 Arakaki, Craig S.
 Arita, Michael H.
 Ariyoshi, Reed M.
 Arucan, Daniel G.
 Asuka, Leslie S.
 Bautista, Arthur J.
 Benham, Hassan
 Braun, Rick G.
 Brown, Paul E., Jr.
 Bui, Dung T.
 Bui, Vinh Tuan
 Bunnell, David M.
 Burger, Fred F.
 Cabalbag, Ruben C.
 Cainelli, James L.
 Caliodan, June A.
 Cam, Gay F.
 Carillo, Juan
 Caserio, Donald J.
 Cheng, Alice N.K.
 Cheng, Chiu Ming J.
 Cheung, Richard W.H.
 Cheung, Yick Wa
 Chinen, Carey J.
 Chou, Thomas
 Chow, Patrick C.M.
 Chow, Takchung
 Chu, Kwokhung D.
 Chun, Curtis P.
 Chun, Mark L.
 Cooper, Robert B.
 Cummings, Kimo
 Dahlquist, Lamont R., Jr.
 Dung, Lily L.Q.
 Dodo, Glenn M.
 Domingo, Anthony E.
 Dowd, Jack L., Jr.
 Elfalan, Derrick
 Emoto, Clesson T.
 Endo, Sheryl C.

Eugenio, Pedro S., Jr.
 Eulalio, Jamie M.
 Fujimura, Mark T.
 Fujitani, Rena T.
 Fukuda, Ailene S.
 Fukuda, Derek Y.
 Galano, Elden M.
 Gentry, Norman H.
 Giubilato, James W.
 Goo, Joseph P.
 Guerin, Gregory James
 Hamada, David K.
 Harris, Mark J.
 Hasenyager, James D.
 Haw, Robert J.
 Heath, Fred E.
 Hee, Merritt K.H.
 Herbst, Stephen A.
 Higa, Gaylord H.
 Higa, Laverne T.
 Hihara, Shirley S.
 Hikichi, Bert S.
 Hikichi, Paul Y.
 Hirabara, Alvin Y.
 Hiyoto, Natalie T.
 Horstman, Philip
 Ige, Edward S.
 Iha, Preston Y.
 Imada, Neal I.
 Inada, Kevin M.
 Inamine, Clyde T.
 Inouye, Brian J.
 Iwami, Eric M.
 Iwami, Lance T.
 Jordan, Robert C.
 Kahn, Kathryn M.S.
 Kaitoku, Norman T.
 Kaku, Roger T.
 Kam, Malcolm K.W.
 Kami, Bert K.
 Kaneshiro, Jon J.
 Kang, Brian S.B.
 Kashiwabara, Glen K.
 Katsura, Lynn T.
 Kawakami, Noren N.
 Kawasaki, Beverly H.
 Kido, Randall S.
 Kikuyama, Gary K.
 Kimura, Kent Y.
 Kitamura, Holly Ann
 Kobashigawa, Sidney H.
 Kohashi, Andrew M.
 Kondo, Randall O.
 Koo, Kinshing
 Koshi, Leslie Y.
 Kwok, Calvin H.W.
 Kwok, Chikong S.
 Kwong, Waichak
 Lam, Arnold W.
 Lau, Chi-man E.
 Lau, Diane S.
 Lau, Ronald K.H.
 Law, Hungwai
 Lee, David H.
 Lee, Donald C.
 Lee, Douglas B.
 Lee, James S.
 Lee, William P.
 Lee, Yuen S.
 Leung, Jimmy M.T.
 Leung, Kwok C.D.
 Lum, Jared H.M.
 Lum, Philip M.H.
 Luzano, Douglas C.
 Mai, Kiet A.
 Matsui, Karen F.
 Matsumoto, Bryan Y.
 McDonough, Timothy F.

Mesa, Philip A.
 Mitsuyama, Alan H.
 Morita, Randall N.
 Moss, Dale C.
 Muckerhahn, Chet J.
 Mukai, Conrad I.
 Muranaka, Irene F.
 Muraoka, John T.
 Nakamura, Paul R.
 Nakamura, Wes S.
 Nazeman, Mohammad R.
 Nguyen, Ngoc H.
 Nihei, Clayton K.
 Niiyama, Paul N.
 Nishida, Audie K.
 Nonaka, Kenneth A.
 Ogata, Kenrick T.
 Okinaka, Nathan K.
 Okuda, Cory O.
 Ono, Franklin A.
 Ornelles, David A.
 Ota, Cedric T.
 Otaguro, Curtis M.
 Otsuka, Alden S.
 Paquin, Daniel G.
 Park, David A.
 Rodriguez, Dennis A.
 Rombaoa, Catalino B., Jr.
 Russell, William J.
 Sakabe, Rodney D.
 Sakaguchi, Roy Y.
 Sakanashi, Eric F.
 Sakurao, Clayton T.
 Sales, Jennifer C.
 Shak, Bryan O.S.
 Shigeta, Paul Y.
 Shimabukuro, Terry A.
 Shimada, Glenn M.
 Shimizu, Clyde T.
 Shiraishi, Rodney S.
 Shiroma, Richard S.
 Slaughter, Leslie A.
 Sniffen, Lloyd A.
 Sogi, Kenneth K.
 Tabiolo, Teresito N.
 Tajima, Lynn S.
 Takaesu, Wesley H.
 Takamine, Tracy N.
 Takenaka, Clifton K.
 Takeuchi, Jeffrey A.
 Tam, Elmer D.O., Jr.
 Tamura, Mark S.
 Tanaka, Aaron K.
 Tanaka, Gareth
 Tanigawa, Michael K.
 Tarumoto, Ken M.
 Tateishi, Paul M.
 Tew, Chit Beng
 Tokashiki, Jon
 Tohg, Pingtak P.
 Tran, Trung N.
 Ueno, Glen A.
 Urasaki, Dennis H.
 Uyehara, Carl M.
 Valdez, George G.
 Vanhorn, James R.
 Visitacion, Rodrigo L.
 Wagner, Richard J.
 Washio, Derek T.
 Watanabe, Craig K.
 Wataru, Weston Y.
 Wong, Chantale Y.M.
 Wong, Dwayne B.F.
 Wong, Elton W.H.
 Wong, Kee K.
 Wong, Taiwai D.
 Wong, Philip Y.
 Yamabe, Mark A.

Yamada, Stuart H.
Yamada, Wallace T.
Yamamoto, John S.
Yamamoto, Warde K.
Yamasaki, Glen T.
Yamashita, Lambert J.
Yamashige, Eric H.
Yamauchi, Lori A.
Yap, Jonathan M.W.
Yara, Calvin M.
Yee, Vivian Y.N.
Yen, Steven S.C.
Yoshida, Alvin K.
Yoshida, Alvin T.
Yoshiyama, Glenn H.
Young, Bruce K.F.
Zane, Lynette, K.Y.
YOUNG, DON

1980-81

AhSing, Kathleen K.W.
Ai, Steven J.
Arakaki, David T.
Aschert, Frank
Bascon, Tracy
Batt, Wayne M.
Burke, Michael B.
Buted, Rolando R.
Carrell, Christy K.
Chang, Mohammed N.H.
Cheung, Francis L.T.
Ching, Randal P.
Chong, Doraine W.H.
Choy, Barry G.W.
Choy, Elton C.L.
Chu, Randy N.T.
Chui, David K.
Chun, Chrisopher L.
Chun, Craig
Chun, Lambert W.M.
DeBettencourt, Paul W.
DeJesus, Tinamarie C.
Dias, Woody
Doi, Maryann C.
Dugay, Ronald S.
Edwards, James
Elliott, Mickle D.
Fackrell, John L.
Fong, Rendell K.G.
Fox, Bruce
Fujita, Ruby R.
Fukuda, Paul K.
Fukuhara, Patrick S.
Fukumoto, Neal S.
Gaorian, Roman M.
Gibo, Milton S.
Gushiken, Andrew K.
Hee, Karl R.
Hew, Eric Y.
Higa, Timothy S.
Higuchi, Mark K.
Hiromoto, Lloyd M.
Hirota, Lyle I.
Ho, Frank K.F.
Ho, Fredella M.
Ho, Kwan Ying
Ho, Stanley T.H.
Ho, Tina S.
Hoag, Kim A.
Horio, Amy K.
Huynh, Leduc
Ide, Brian M.
Illingworth, Thomas L.
Imata, Natalie C.
Ishii, Ben E.
Ishii, Beverly K.
Iwasa, Russell K.
Jandoc, Daniel
Kagawa, Wade Y.

Kaneshiro, Keith T.
Kaneshiro, Roy J.
Katsuhira, Takayuki
Kawabata, Arleen M.
Kobashigawa, Eric H.
Koki, Glenn M.
Koyanagi, Eric M.
Kunishige, Karl D.
Kurio, Jon H.
Kutara, Miles K.
Lam, Kamfai R.
Lam, May I.P.
Lam, Wayne W.
Lee, Homing
Lee, Nelson A.
Leonardo, Brillian D.
Leong, David K.S.
Li, Linda K.Y.
Libed, Oscar R.
Liu, Norman W.K.
Liu, Rodney K.H.
Lui, Clarence W.T.
Luk, Chunfai T.
Lynch, Douglas J.
Ma, Johnston K.Y.
Ma, Lily Y.C.
Maeda, Janice S.
Maeda, Lance N.
Major, Gary A.
Mak, Kwok K.
Man, Lai H.
Mannion, Virginia
Matsuoka, Bert S.
Merrick, Tom
Midomaru, Randall W.
Miho, Myron K.
Miyamoto, Gordon K.
Morinaga, Neil J.
Morita, Cary T.
Moseman, Steven N.
Muraoka, Melvin E.
Nago, Terrance I.
Nakagawa, Eric S.
Nakajima, Toshihiko
Nakamura, Lance S.
Namba, William I.
Nishimuta, Stephen S.
Nogami, Darryl I.
Nojima, Michael H.
Okuda, Christine K.
O'Neal, Mark S.
Ong, Frank B.
Ornellas, Lawrence G.
Oshiro, Alan T.
Oshiro, Nolan A.
Otsuka, James T.
Palisbo, Peter S.C.
Robello, Carl M.
Rombaoa, Samuel P.
Saito, Michael S.
Saka, Alan I.
Sakamoto, Dean A.
Sakima, Valerie N.
Sato, Michael M.
Schnell, Gary
Settsu, Kendrick
Shak, Clifton J.
Shigaki, Eric H.
Shigeta, Michael K.
Sorayama, Clayton T.
Staffelbach, Greg R.
Sunada, Jason K.
Surya, Charles
Tadjvar, Mohsen
Takahashi, Laura M.
Taira, Dan T.
Takamiya, Lance T.
Takehara, Stan K.

Tanda, Doreen S.
Tang, Sophia S.Y.
Tano, Jesse Q.
Tanouye, Duane T.
Tom, Patrick Y.M.
Toyota, Barry A.
Tsang, Barney P.C.
Tsuahako, David T.
Tsuji, Audrey Y.
Tsutsui, Cora E.
Tsuyemura, Jason A.
Tung, Albert T.Y.
Uejo, Susan M.
Umamoto, Karl M.
Umnus, Pilar J.
Ushijima, Wayne M.
Ushio, Myles J.
Vella, Paul L.
Walczak, Mark C.
Wang, Vincent W.
Ward, Allan C.
White, Gregory W.
Williams, Edwina
Wong, Amy Y.M.
Wong, Lenora W.L.
Wong, Michael W.
Wong, Yiu Tim
Wongwaiwit, Chalermchai
Wun, Kikwong
Yabusaki, Donn A.
Yamada, Alan J.
Yamaguchi, Keith K.
Yanagihara, Casey K.
Yee, Jocelyn M.U.
Yip, Kaman
Yoneshige, Darlene Y.
Young, Duane J.M.
Young, Elaine E.
Young, Lori Ann Y.K.
Yuen, Joel P.
Yuen, Michael R.K.

Acknowledgments

Masao Miyamoto
Kazutoshi Najita
Michael Tamaru

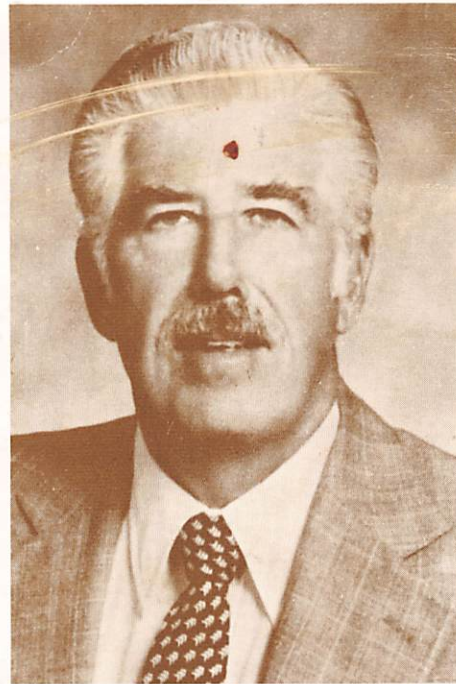
FORMER DEANS



Arthur R. Keller
1920-1947



Wilfred J. Holmes
1947-1965



John W. Shupe
1965-1980