

**Contribution to knowledge of the butterflies and moths (Lepidoptera)
of north-eastern Poland with a description of a new tineid species from
the genus *Monopis* HÜBNER, 1825**

JAN ŠUMPICH *, JAN LIŠKA **, IVO DVOŘÁK ***

* CZ-582 61 Česká Bělá 212, Czech Republic; e-mail: jansumpich@seznam.cz;

** Forestry and Game Management Research Institute Jíloviště-Strnady, CZ-156 04

Prague 5 – Zbraslav, Czech Republic; e-mail: liska@vulhm.cz;

*** Tylova 23, CZ-586 01 Jihlava, Czech Republic; e-mail: ivo.dvorak@post.cz

ABSTRACT. This work contains faunistic data on the occurrence of 677 butterfly and moth species found during 2000-2008 in north-eastern Poland (Podlasie Province). The species *Monopis fenestratella* (HEYDEN, 1863), *Amphisbatis elsae* SVENSSON, 1982, *Coleophora ptarmicia* WALSINGHAM, 1910 and *Epermenia falciformis* (HAWORTH, 1828) were found in Poland for the first time. Recent data are provided for five other species – *Monochroa servella* (ZELLER, 1839), *Teleiodes aenigma* SATTLER, 1983, *Dichomeris limosella* (SCHLÄGER, 1849), *Aethes rutilana* (HÜBNER, 1817) and *Eana derivana* (LA HARPE, 1858) – known in Poland only from historical data. The occurrence in Podlasie of 75 species is reported for the first time, and the occurrence of 6 other species is confirmed for this area after more than 50 years. This work also describes a new species, *Monopis bisonella* ŠUMPICH, sp. n. A number of species are very rare in Poland and occur only locally. These include *Nemapogon wolfftiellus* KARSHOLT & NIELSEN, 1976, *Coleophora trifariella* ZELLER, 1849, *Sophronia chilonella* (TREITSCHKE, 1833), *Syncopacma sangiella* (STANTON, 1863), *Helcystogramma albinerve* (GERASIMOV, 1929), *Cochylis flaviciliana* (WESTWOOD, 1854), *Acleris comariana* (LIENIG & ZELLER, 1846), *Apotomis semifasciana* (HAWORTH, 1811), *Cydia coniferana* (SAXESEN, 1840), *Euphydryas maturna* (LINNAEUS, 1758), *Lopinga achine* (SCOPOLI, 1763), *Scopula nemoraria* (HÜBNER, 1799), *Epirrhoe tartuensis* MOELS, 1965 and *Schrankia taenialis* (HÜBNER, 1809). A complete list of the species found is provided in the Appendix at the end of this work.

KEY WORDS: Lepidoptera, faunistics, new records, *Monopis bisonella* sp. n., Podlasie, Poland.

INTRODUCTION

This report summarizes findings about the lepidopteran fauna of north-eastern Poland

obtained during several random excursions in 2000-2008. The first collections were made in 2000 in association with the international meeting of lepidopterologists in Białowieża held by Societas Europaea Lepidopterologica (SEL). The field excursions of J. Šumpich and I. Dvořák took place in the close vicinity of Białowieża at that time, and the findings were recorded in written form. In 2006, the same authors took part in the 24th meeting of Polish lepidopterologists in the Biebrza National Park, where they examined material near the village of Osowiec Twierdza during very bad weather. The fundamental results presented in this report, however, were obtained by J. Šumpich and J. Liška during their third visit to north-eastern Poland in 2008, namely, to the region around the town of Augustów. During five night-time excursions in the neighbourhoods of Kukowo and Płaska several hundred species were found, a number of which turned out to be faunistically interesting not only for Poland but also in a broader central European context.

Most of the species found were caught using a 125 W mercury lamp and an 8 W fluorescent lamp. Additional adults were caught with a lepidopterological net (sweeping, by individual catching). The material evidence is filed in the authors' collections.

Acknowledgement

We would like to thank prof. dr J. Buszko for reviewing the manuscript. We also thank K. Šmerdová and A. Kirking for correcting the English. And finally we would like to thank mgr. inż. A. Rodziewicz (Kukowo) for kindly invitation, accompaniment and accomodation in the year 2008.

SYSTEMATICS

Monopis fenestratella (HEYDEN, 1863)

(Tineidae)

Material examined

Płaska, 1 female (Fig. 7), 17 VI 2008 (leg., coll. J. Šumpich). The specimen was captured at light in open woodland.

The species is known from all the countries surrounding Poland with the exception of Belarus (GAEDIKE, in KARSHOLT & NIEUKERKEN 2004); it is very rare in central Europe, as evidenced by the very small number of records from these neighbouring countries. In Slovakia, it was recorded for the first time at Prievidza in 1998 (TOKÁR et al. 2002). In the Czech Republic, it was found only in northern and southern Moravia in 2007 (SITEK 2008). We also know of a very few findings from Germany and Ukraine (PETERSEN 1969, PETERSEN & GAEDIKE 1987). Apart from central Europe, the species occurs in northern and north-western Europe including the British Isles. For Poland, it is a new species.

Monopis bisonella ŠUMPICH, sp. n.

(Tineidae)

Material examined

Holotype: male, Białowieża env., Podolany village, (genitalia in glycerine in the plastic tube on the pins below the adult) (Fig. 1), 28 V 2000 (leg., coll. J. Šumpich, later in Czech museum with author's collection).



Fig. 1. Holotype of *Monopis bisonella* sp. n.

Description of male

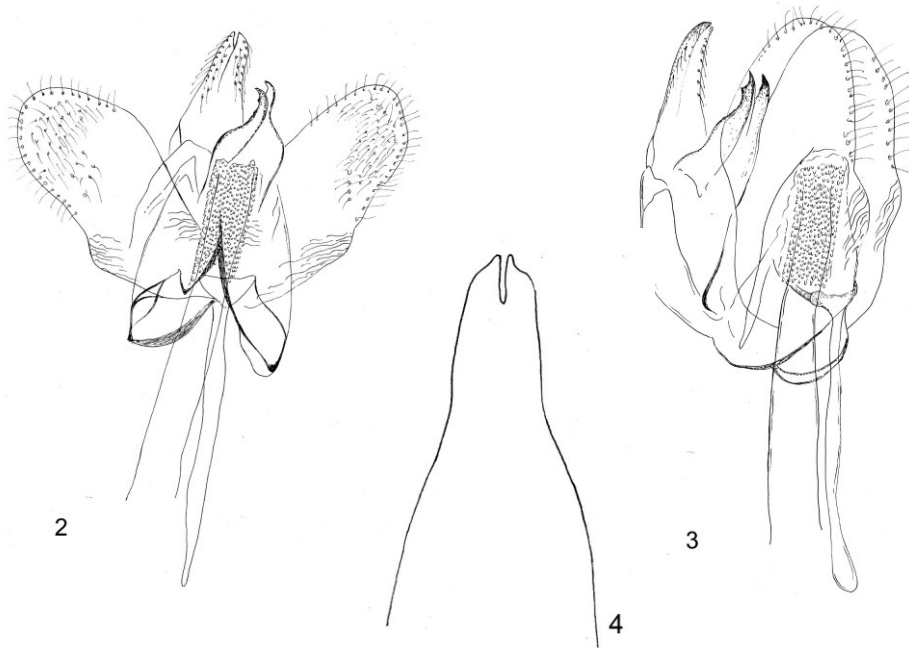
Wingspan: 11 mm. Head and frons densely covered with yellow ochre bristles (hairs). Labial palps yellow when fully extended. Antenna filiform, dark, the last third white. Thorax and abdomen brown, concolorous with the forewings. Leg undersides yellow, upper sides alternately black and yellow. Forewing: ground colour (Fig. 1) dark brown; in the centre, a bold, sharply defined white spot. A second white spot on the dorsum, the white colour extending to the fringes. Hindwings brown, paler than forewings. Fringes of both wings the same hue as hindwing except where the white spot meets the forewing edge.

Male genitalia (Figs 2-4): uncus oblong, bottle-shaped, tapering towards the tip; tip bifurcate with pointed terminations. Gnathos tapering gradually, convex in the middle, bent, with a pointed termination. A spur protrudes just below the termination. Valva elongate, oval, 2.5 x longer than its width in the middle; at the base it is wider than at the outer end.

Ventral border gently curved, dorsal side is very much convex; the shape of the valve remotely resembles the letter S. Saccus 1.2 x longer than aedeagus, very narrow, tapering slightly in bottom fifth of its length. Aedeagus narrow, 2.5x wider than saccus, slightly curved in the lateral aspect, 1.5 x longer than valva, without cornutus. Vesica densely covered with small striae.

Female: unknown.

Biology: unknown. The holotype was caught on a wet meadow close to a wet forest. Presumably, the ecological requirements of this species are similar to those of most species of the genus *Monopis*.



Figs 2-4. Male genitalia of *Monopis bisonella* sp. n., 2 – ventral aspect, 3 – lateral aspect, 4 – ventral aspect of uncus.

Distribution

The type locality is in north-eastern Poland (Fig. 5), which is the south-western border of the European boreal zone. Therefore, it may well be of boreal origin and has spread into a wider area.



Fig. 5. The habitat of *Monopis bisonella* sp. n. and the other species presented in this paper (Podolany near Białowieża).



Fig. 6. The habitat of the most interesting species presented: *Plaska*.

Etymology

The name of the new species is derived from the generic name of the European bison (*Bison bonasus*), as the population of these mammals is numerous precisely where the newly described moth was found.

Remarks

Nowadays, the genus *Monopis* HÜBNER, 1825 includes 135 species (ROBINSON 2002),

just 14 of which occur in Europe (GAEDIKE, in KARSHOLT & NIEUKERKEN 2004). *Monopis bisonella* ŠUMPICH, sp. n. can be relatively easily distinguished from other similar Palearctic species of this genus (PETERSEN 1957, ZAGULJAEV 1960, GAEDIKE & KARSHOLT 2001, XIAO & LI 2006), thanks to its two sharply defined spots on the forewing (the most similar species by size, *M. fenestratella*, has one spot with a fuzzy border). Compared to the species in the *M. laevigatella* group, which have a very similar forewing pattern, *Monopis bisonella* ŠUMPICH, sp. n. is significantly smaller and differs from most of the former species in the chocolate colour of its forewings. We can reliably differentiate the species by the male genitalia: the combination of the characteristically shaped gnathos and convex valve is a definitive characteristic.

***Parornix avellanella* (STAINTON, 1854)**

(Gracillariidae)

Material examined

Kukowo, 2 males, 17 VI 2008 (leg., coll. J. Šumpich). A widespread species, the name of which was until recently considered to be a synonym of *P. devoniella* (STAINTON, 1850) (PRINS & PRINS 2005). The material found in north-eastern Poland was identified according to KUZNETZOV & BARYSCHNIKOVA (2003), who revised the taxonomic position of the Palearctic species of the genus *Parornix* SPULER, 1910.

***Scythris palustris* (ZELLER, 1855)**

(Scythrididae)

Material examined

Białowieża env., Podolany village, 1 male, 28 V 2000 (leg., coll. J. Šumpich). A wetland species, its exclusive foodplant is *Rhytidiadelphus squarrosus* (BENGTSSON 1997). The range of distribution of this species is concentrated in central Europe, but it has also been known from western and north-eastern Europe (BENGTSSON in KARSHOLT & NIEUKERKEN 2004). In Poland it is very local. It used to be found in the provinces of Western Pomerania, Lower Silesia and Małopolska, but recently just in Lublin Province (BUSZKO & NOWACKI 2000).

***Coleophora ptarmicia* WALSINGHAM, 1910**

(Coleophoridae)

Material examined

Płaska, 1 male (Fig. 8), 17 VI 2008 (leg., coll. J. Šumpich). The specimen was caught at light in an open, steppe-like biotope with sandy soil. The caterpillar is associated with *Achillea millefolium*, which occurs in this locality in great abundance. A very local species; to date, there is insufficient knowledge regarding its occurrence. Today, the species is known from just a few countries in central and western Europe, the Baltic countries and Russia (BALDIZZONE & van der WOLF in KARSHOLT & NIEUKERKEN 2004). Among

Poland's neighbouring countries, it has been found only in the Czech Republic (STERNECK & ZIMMERMANN 1933, GREGOR et al. 1984, ŠUMPICH et al. 2007) and in Slovakia (REIPRICH & OKÁLI 1989). A new species for Poland.

***Pseudatemelia elsae* SVENSSON, 1982**

(Amphisbatidae)

Material examined

Łaska, 25 spec. (not sexed) (Fig. 9), 17 VI 2008 (leg., coll. J. Šumpich, J. Liška), many others were sighted. Material evidence was obtained by catching at light at the edge of a pine forest. We do not have sufficiently reliable information regarding the occurrence of this species, as it is very similar to related species of this genus and can very easily be confused with them. Current knowledge of the life history, habitats and distribution is summarized by TOKÁR et al. (2005). In neighbouring countries only known from the Czech Republic (LIŠKA et al. 2001) and Slovakia (TOKÁR et al. 2002). A new species for Poland.

***Monochroa servella* (ZELLER, 1839)**

(Gelechiidae)

Material examined

Łaska, 1 male, 17 VI 2008 (leg., coll. J. Liška). The specimen was caught individually in a wetland biotope near the lake "Jeziro Pobjno". A very local species (and very rare in most of the locations where it occurs), its food plants are *Primula farinosa* and *P. veris* (ELSNER et al. 1999). The species occurs in pockets across the whole of Europe, including all of Poland's neighbours (KARSHOLT in KARSHOLT & NIEUKERKEN 2004). In Poland to date, there exists only historical data on its occurrence, namely from Western Pomerania and Lower Silesia (BUSZKO & NOWACKI 2000). The rediscovery of this species in Augustów Forest confirms the occurrence of this species in Poland after a gap of more than 50 years.

***Monochroa rumicetella* (HOFMANN, 1868)**

(Gelechiidae)

Material examined

Biebrza National Park, Osowiec Twierdza env., 2 males (Fig. 10), 3 VI 2006 (leg., coll. J. Šumpich). The material was caught at UV light in a dry pine wood with numerous *Juniperus communis* bushes. The caterpillar is associated with species of *Acetosa* and *Acetosella*; it prefers forest-steppe biotopes (ELSNER et al. 1999). Although this species inhabits the whole of Europe, it is very local and its populations are not dense anywhere. In Poland, it has so far been known only from the province of Kujawy-Pomerania, and

historically Małopolska. The finding in Podlasie makes a significant addition to our knowledge of this species in Poland.

***Monochroa niphognatha* (GOZMÁNY, 1953)**

(Gelechiidae)

Material examined

Białowieża env., Podolany village, 1 male (Fig. 11), 28 V 2000 (leg., coll. J. Šumpich). The voucher specimen was caught at light in a meadow, which tallies with present knowledge of this species' ecological requirements (ELSNER et al. 1999). To date, the species has been known from just a few localities in central and northern Europe, and recently it was found in the British Isles and in Ukraine (ELSNER et al. 1999, KARSHOLT in KARSHOLT & NIEUKERKEN 2004, BIDZILYA & BUDASHKIN 2009). In Poland, it has so far been recorded in just two provinces (Lublin and Podlasie).

***Carpatolechia aenigma* SATTLER, 1983**

(Gelechiidae)

Material examined

Płaska, 1 male (Fig. 12), 17 VI 2008 (leg., coll. J. Šumpich). The voucher specimen was caught at light in an open, steppe-like habitat, which corresponds to the habitat preferences of the species (ELSNER et al. 1999). It occurs mostly in eastern, western and central Europe. It does not occur on the islands of Europe, in the Iberian Peninsula or in the Nordic countries (KARSHOLT in KARSHOLT & NIEUKERKEN 2004). In Poland to date it has been known only from historical data from the province of Mazovia (BUSZKO & NOWACKI 2000). The present finding from Augustów Forest provides important confirmation of its occurrence in Poland.

***Dichomeris limosella* (SCHLÄGER, 1849)**

(Gelechiidae)

Material examined

Białowieża env., Podolany village, 1 specimen, 21 VI 2008 (observ. J. Šumpich, J. Liška). The present specimen was observed on a forest path, where it was attracted to light. This species is widespread in Europe (KARSHOLT in KARSHOLT & NIEUKERKEN 2004), and it is not so rare in a number of places (hence, no voucher specimens were collected). However, only historical records are known from Poland (BUSZKO & NOWACKI 2000) and Bohemia, western part of the Czech Republic (NOVÁK et al. 1997). This is the first confirmed occurrence in Poland for more than 50 years.

Aethes rutilana (HÜBNER, 1817)

(Tortricidae)

Material examined

Płaska, 2 males, 17 VI 2008 (leg., coll. J. Šumpich). Both voucher specimens were attracted to light at the edge of a forest where *Juniperus communis* is common, with which the caterpillar is uniquely associated. This species is widespread in Europe. Among neighbouring countries, it has not yet been reported in Ukraine, Belarus or Russia (AARVIK in KARSHOLT & NIEUKERKEN 2004). In Poland, this species has been found in most provinces but there are no recent data (BUSZKO & NOWACKI 2000). The situation is similar in the Czech Republic, where the species was mentioned by a number of authors in the first half of the 20th century (STERNECK & ZIMMERMANN 1933, VLACH 1936, ZIMMERMANN & SKALA 1947), but recently there has been just one record (ŠUMPICH et al. 2007). The present finding confirms the species' occurrence in Poland after more than 50 years.

Cochylidia moguntiana (RÖSSLER, 1864)

(Tortricidae)

Material examined

Płaska, 14 males (Fig. 13), 2 females, 16 VI 2008 (leg., coll. J. Šumpich, J. Liška); several others were sighted. The moths were captured by sweeping in dry grasslands and by driving them out from clumps of *Artemisia campestris*, their food plant. The species occurs in pockets throughout most of Europe but is absent from a number of countries, including Ukraine, Belarus and Russia (AARVIK in KARSHOLT & NIEUKERKEN 2004); it has not been found in the Czech Republic either (LAŠTŮVKA & LIŠKA 2005). In Poland, it is known at present only from Kujawy-Pomerania, but in the past it was also recorded in Warmia-Mazury (BUSZKO & NOWACKI 2000). Its common occurrence in Augustów Forest illustrates the still insufficient knowledge of the moths of north-eastern Poland and highlights the exceptional natural conditions of this region.

Eana derivana (LA HARPE, 1858)

(Tortricidae)

Material examined

Płaska, 2 males (Fig. 14), 17 VI 2008 (leg., coll. J. Šumpich, J. Liška). The material was obtained by catching at light on sandy biotopes near the village of Płaska. It is a species whose life history and habitats are generally still unknown, and whose distribution is insufficiently understood. It is known to occur in many European countries but has not been found in the Iberian Peninsula, in the British Isles, or, to date, east of Poland (AARVIK in KARSHOLT & NIEUKERKEN 2004). From Poland, reports of its occurrence have been published only from the provinces of Pomerania, Silesia and Małopolska, but in all cases

these are historical data (BUSZKO & NOWACKI 2000). The present findings confirm the species' recent occurrence in Poland after more than 50 years.

***Cnephasia pasiuana* (HÜBNER, 1799)**
(Tortricidae)

Material examined

Płaska, 1 male (Fig. 15), 17 VI 2008 (leg., coll. J. Šumpich). The specimen was attracted to a source of ultraviolet light on a forest path. The species is widespread in Europe, its occurrence being reported in most countries (AARVIK in KARSHOLT & NIEUKERKEN 2004). The species has been found in a number of provinces in Poland, but recently only in Kujawy-Pomerania (BUSZKO & NOWACKI 2000). The finding contributes to our knowledge of the species' occurrence in Poland, and it provides the first record for Podlasie.

***Ancylis diminutana* (HAWORTH, 1811)**
(Tortricidae)

Material examined

Biebrza National Park, Osowiec Twierdza env., 1 male, 3 VI 2006, Kukowo, 1 male, 17 VI 2008 (leg., coll. J. Šumpich). Both specimens were captured at light in wetland habitats. The species is distributed in Europe locally and is come across very infrequently; it is absent from southern Europe and in most countries of western Europe. Among Poland's neighbours, it has been found only in the Czech Republic and in Lithuania (AARVIK in KARSHOLT & NIEUKERKEN 2004). For Poland, until recently its occurrence was known only from historical records (BUSZKO & NOWACKI 2000). It was recently reported by RAZOWSKI (2003) from the Borecka Forest (J. Buszko leg.).

***Dichrorampha incognitana* (KREMKY & MASLOWSKI, 1933)**
(Tortricidae)

Material examined

Płaska, 2 males (Fig. 16), 17 VI 2008 (leg., coll. J. Šumpich). A steppe species associated with *Achillea millefolium*, on which the material evidence was collected. The species occurs in almost the entire Palaearctic, but it is a very rare species in Europe and is wholly absent from the west and south of the continent (RAZOWSKI 2003, AARVIK in KARSHOLT & NIEUKERKEN 2004). In Poland, its occurrence is known from very old data from most provinces. It has recently been found only in Kujawy-Pomerania. This is a rare finding, not only from the viewpoint of Polish entomofaunistics but also from the wider European perspective.

***Dichrorampha agilana* (TENGSTROM, 1848)**

(Tortricidae)

Material examined

Plaska, 20 spec. (not sexed) (Fig. 17), 16-18 VI 2008 (leg., coll. J. Šumpich, J. Liška), many others were observed. The voucher specimens were obtained by sweeping dry grass in sandy habitats. The species occurs in all parts of Europe (RAZOWSKI 2003, AARVIK in KARSHOLT & NIEUKERKEN 2004) but is very local and it is unknown in many areas. For example, it is not known from the Moravian-Silesian region of the neighbouring Czech Republic (LAŠTŮVKA & LIŠKA 2005). Although its very abundant occurrence was documented in Augustów Forest, it is generally a rare species in Poland. Recent records are only from the province of Warmia-Mazury (BUSZKO & NOWACKI 2000).

***Epermenia falciformis* (HAWORTH, 1828)**

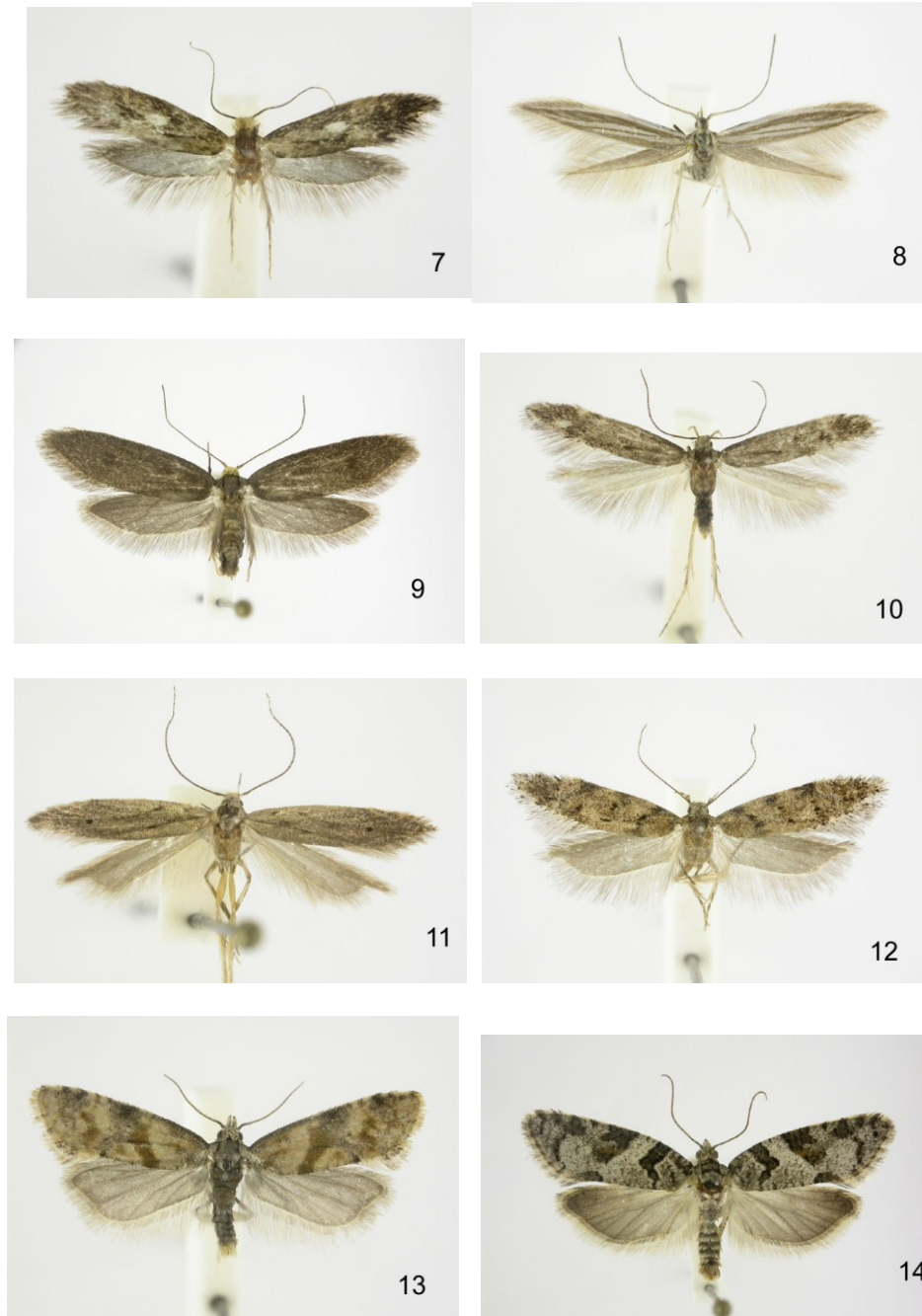
(Epermeniidae)

Material examined

Białowieża env., Podolany village, 3 males (Fig. 18), 21 VI 2008 (leg., coll. J. Šumpich, J. Liška). This species was overlooked in the past, and it was not distinguished from *Epermenia illigerella* (HÜBNER, 1813) until recently (SCHOLZ 1996). Mainly on this account, its occurrence is still known from only a small number of countries, mostly in central and northern Europe (SCHOLZ 1996, GAEDIKE in KARSHOLT & NIEUKERKEN 2004). Present-day records in neighbouring countries are from most German Lands (GAEDIKE & HEINICKE 1999), Bohemia (NOVÁK et al. 1997), Moravia (ŠUMPICH et al. 2006) and Slovakia (TOKÁR et al. 1999). To date, no evidence of its occurrence in Poland has been forthcoming. It is thus a new species for Poland.

CONCLUSION

In total nearly 700 moth species were found during three excursions to north-eastern Poland between 2000 and 2008. Among them were a number of faunistically or zoogeographically rare findings of interest beyond that of Polish entomofaunistics. Although we can regard the entire area of north-eastern Poland as having rather extraordinary natural conditions, here, too, we can observe the trend of decreasing insect populations that is characteristic of the whole of Europe. If we compare our impressions from our excursions in Poland with the findings obtained during our studies of the lepidopteran fauna of the Czech lands, however, we must state that the situation in Poland is still much more favourable than that in the Czech Republic (i.e. species abundances were conspicuously higher in comparable biotope types). We should note that the general decrease of moths in Europe, where a number of species are in jeopardy and in extreme cases even dying out, relates not only to large and attention-grabbing species but also to some very small species (the “Microlepidoptera” group) that are today very easily overlooked.



Figs. 7-14. Voucher specimens of some significant records: 7. *Monopis fenestratella*; 8. *Coleophora ptarmicia*; 9. *Pseudatemelia elsae*; 10. *Monochroa rumicetella*; 11. *Monochroa niphognatha*; 12. *Carpatolechia aenigma*; 13. *Cochylidia moguntiana*; 14. *Eana derivana*.



Figs 15-21. Voucher specimens of some significant records: 15. *Cnephasia pasiuana*; 16. *Dichrorampha incognitana*; 17. *Dichrorampha agilana*; 18. *Epermenia falciiformis*; 19. *Ptocheuusa inopella*; 20. *Sophronia chilonella*; 21. *Cydia coniferana*.

REFERENCES

- BENGTSSON B.Å. 1997. Scythrididae. [In:] HUEMER P., KARSHOLT O. & LYNEBORG L. (eds). *Microlepidoptera of Europe 2*. Apollo Books, Stenstrup, 301 pp.
- BIDZILYA O.V., BUDASHKIN YU.I. 2009. New records of Lepidoptera from Ukraine. *Proceedings of the Zoological Museum* **5**: 14-28. [In Ukrainian].
- BUSZKO J., NOWACKI J. (eds). 2000. *The Lepidoptera of Poland. A distributional Checklist*. Polish Entomological Monographs **1**, 178 pp.
- ELSNER G., HUEMER P., TOKÁR Z. 1999. Die Palpenmotten (Lepidoptera, Gelechiidae) Mitteleuropas. Bestimmung, Verbreitung, Flugstandort, Lebensweise der Raupen. F. Slamka, Bratislava, 208 pp.
- GAEDIKE R., HEINICKE W. (Hrsg.) 1999. Verzeichnis der Schmetterlinge Deutschlands (Entomofauna Germanica 3). *Entomologische Nachrichten und Berichte (Dresden) Beiheft* **5**: 1-216.
- GAEDIKE R., KARSHOLT O. 2001. Contribution to the Lepidoptera fauna of the Madeira Islands. Part 2. Tineidae, Acrolepiidae, Epermeniidae. *Beiträge zur Entomologie* **51**: 161-213.
- GREGOR F., LAŠTŮVKA A., LAŠTŮVKA Z., MAREK J. 1984. Zur Verbreitung der *Coleophora*-Arten in der Tschechoslowakei (Lepidoptera, Coleophoridae). *Biologia (Bratislava)* **39**: 1023-1032.
- KARSHOLT O., NIEUKERKEN E.J. van (eds). 2004. *Fauna Europaea: Lepidoptera, Moths*. Fauna Europaea, Version 2.1, <http://www.faunaeur.org> (visited on 15 March 2010).
- KUZNETZOV V.I., BARYSCHNIKOVA S.V. 2003. A brief review of gracillariid moths of the genus *Parornix* Spuler, 1910 (Lepidoptera, Gracillariidae) of the Palearctic fauna. *Entomologiceskoe Obozrenie* **82**: 116-137 [In Russian].
- LAŠTŮVKA Z., LIŠKA J. 2005. Checklist of Lepidoptera of the Czech Republic (Insecta: Lepidoptera). <http://www.mendelu.cz/user/zoapi/lepidoptera.htm> (visited on 15 March 2010).
- LIŠKA J., LAŠTŮVKA Z., JAROŠ J., MAREK J., NĚMÝ J., PETRŮ M., ELSNER G., SKYVA J., FRANZ J. 2001. Faunistic records from the Czech Republic – 142. *Klapalekiana* **37**: 275-278.
- NOVÁK I., LIŠKA J., ELSNER G., JAROŠ J., PETRŮ M., SKYVA J., SPITZER K., ŠPATENKA K., VÁVRA J., WEIDENHOFER Z. 1997. Katalog motýlů (Lepidoptera) Čech. *Klapalekiana* **33** (Suppl.): 1-159.
- PETERSEN G. 1957. Die Genitalien der paläarktischen Tineiden (Lepidoptera: Tineidae). *Beiträge zur Entomologie* **7**: 55-176.
- PETERSEN G. 1969. Beiträge zur Insekten-Fauna der DDR: Lepidoptera – Tineidae. *Beiträge zur Entomologie* **19**: 311-388.
- PETERSEN G., GAEDIKE R. 1987. Beiträge zur Insektenfauna der DDR: Lepidoptera. Nachträge IV (Tineidae, Acrolepiidae, Crambidae, Galleriidae, Pyralidae s. str., Douglassiidae, Pyraustinae, Scopariinae, Phycitinae). *Entomologische Nachrichten und Berichte* **31**: 29-36.
- DE PRINS W., DE PRINS J. 2005. Gracillariidae (Lepidoptera). *World Catalogue of Insects* **6**: 1-502.
- RAZOWSKI J. 2002. *Tortricidae of Europe. Volume 1. Tortricinae and Chlidanotinae*. František Slamka, Bratislava, 247 pp.
- RAZOWSKI J. 2003. *Tortricidae of Europe. Volume 2. Olethreutinae*. František Slamka, Bratislava, 301 pp.
- REIPRICH A., OKÁLI I. 1989. Dodatky k Prodrumu Lepidopter Slovenska. 2. zväzok (Ergänzungen zu Prodrum Lepidopterum Slovakiae). 2. Teil. Veda, vydavateľstvo Slovenskej akadémie vied, Bratislava, 107 pp [in Slovak, German abstr.].
- ROBINSON G.S. 2002. Global Taxonomic Database of Tineidae (Lepidoptera). <http://www.nhm.ac.uk/research-curation/research/projects/tineidae> (visited 15 March 2010).
- SCHOLZ A. 1996. Zur Identität von *Epermenia falciformis* (Haworth, 1828) (Lepidoptera: Epermeniidae). *Nota Lepidopterologica* **18**: 289-296.
- SITEK J. 2008. Faunistic records from the Czech Republic – 251. *Klapalekiana* **44**: 75-76.
- STERNECK J., ZIMMERMANN F. 1933. *Prodrum der Schmetterlingsfauna Böhmens II. (Microlepidoptera)*. Jacob Sterneck, Karlsbad, 168 pp.

- ŠUMPICH J., LIŠKA J., ELSNER G., ŽEMLIČKA M., MAREK J., DVOŘÁK I., DVOŘÁK M., DOBROVSKÝ T., SKYVA J. 2006. Faunistic records from the Czech Republic – 202. *Klapalekiana* **42**: 181-187.
- ŠUMPICH J., ŽEMLIČKA M., ČÍLA P., HEŘMAN P., LIŠKA J., ELSNER G., MAREK J., LAŠTŮVKA A., SKYVA J., MIKÁT M., ROTTER M. 2007. Faunistic records from the Czech Republic – 225. *Klapalekiana* **43**: 79-84.
- TOKÁR Z., LVOVSKY A., HUEMER, P. 2005. Die Oecophoridae s. l. Mitteleuropas (Lepidoptera) Bestimmung, Verbreitung, Habitat, Bionomie. František Slamka, Bratislava, 120 pp.
- TOKÁR Z., RICHTER I., PASTORÁLIS G., SLAMKA F. 2002. New and interesting records of Lepidoptera of Slovakia from the years 1998-2001. *Entomofauna Carpathica* **14**: 1-11.
- TOKÁR Z., SLAMKA F., PASTORÁLIS G. 1999. New and interesting records of Lepidoptera from Slovakia in 1995-1997. *Entomofauna Carpathica* **11**: 43-57.
- VLACH V. 1936. Microlepidoptera pro Čechy nová nebo pochybná. *Čas. Česke Společnosti Entomologické* **33**: 18-19 [In Czech].
- XIAO Y., LI H. 2006. A review of the genus *Monopis* Hübner from China (Lepidoptera, Tineidae, Tineinae). *Mitteilungen aus dem Museum für Naturkunde in Berlin; Deutsche Entomologische Zeitschrift* **53**: 193-212.
- ZAGULJAEV A.K. 1960. Tineidae; part 3, subfamily Tineinae. *Fauna SSSR* **78**: 1-267 (in Russian).
- ZIMMERMANN F., SKALA H. 1947. Kleinfalter aus Mähren-Schlesien. *Zeitschrift der Wiener Entomologischen Gesellschaft* **31**: 121-123.

APPENDIX

Overview of species of butterflies and moths found in Podlasie in 2000-2008.

(Explanations: numerals in columns 2-6 represent the numbers of specimens, species in column 7 (other) were observed to the amount of 10 specimens; the “other” column – 1) Strękowizna 15 VI 2008, 2) Sucha Rzecznka 18 VI 2008, 3) Strzelcowizna 18 VI 2008; “Notes” column: PL – new species for Poland, Pd – new species for Podlasie, (!) – confirmation of occurrence after a long time).

	Białowieża		Osowiec	Puszcza Augustowska			Notes
	28 V- 3 VI 2000	21 VI 2008		3 VI 2006	14-19 VI 2008	16-18 VI 2008	
Micropterigidae							
<i>Micropterix calthella</i> (LINNAEUS, 1761)					1		
Hepialidae							
<i>Hepialus hecta</i> (LINNAEUS, 1758)				3			
Nepticulidae							
<i>Stigmella zelleriella</i> (SNELLEN, 1875)		1					
Adelidae							
<i>Adela degeerella</i> (LINNAEUS, 1758)	1	5-10		1	11-30		
<i>Nematopogon metaxellus</i> (HÜBNER, 1813)		1			5-10		

Incurvariidae							
<i>Incurvaria oehlmanniella</i> (HÜBNER, 1796)	1						
<i>Incurvaria praelatella</i> (DEN. & SCHIFF., 1775)		1		5-10	1		
<i>Lampronia corticella</i> (LINNAEUS, 1758)	1						
Tischeriidae							
<i>Emmetia marginea</i> (HAWORTH, 1828)					1		Pd
Tineidae							
<i>Haplotinea insectella</i> (FABRICIUS, 1794)	1						
<i>Scardia boletella</i> (FABRICIUS, 1794)			1				
<i>Triaxomera fulvimitrella</i> (SODOFFSKY, 1830)	1						Pd
<i>Triaxomera parasitella</i> (HÜBNER, 1796)	1		1				
<i>Archinemapogon yildizae</i> KOCAK, 1981			1				
<i>Nemaxera betulina</i> (PAYKULL, 1785)					1		Pd
<i>Nemapogon cloacellus</i> (HAWORTH, 1828)	2	1	1		1		
<i>Nemapogon wolffiellus</i> KARS. & NIELSEN, 1976		1	1				Pd
<i>Tinea trinotella</i> THUNBERG, 1794					1		
<i>Monopis obviella</i> (DEN. & SCHIFF., 1775)					1		
<i>Monopis monachella</i> (HÜBNER, 1796)	1				1		
<i>Monopis fenestratella</i> (HEYDEN, 1863)					1		PL
<i>Monopis bisonella</i> sp. n.	1						sp. n.
Psychidae							
<i>Taleporia tubulosa</i> (RETZIUS, 1783)	1		1				
<i>Proutia betulina</i> (ZELLER, 1839)		1			1		
<i>Psyche casta</i> (PALLAS, 1767)		2					
<i>Bijugis bombycella</i> (DEN. & SCHIFF., 1775)	3						
<i>Sterrhopterix fusca</i> (HAWORTH, 1809)	5-10			1	11-30		
Bucculatricidae							
<i>Bucculatrix bechsteinella</i> (BCH. & SCHARF., 1805)					1		
<i>Bucculatrix frangutella</i> (GOEZE, 1783)					1		
Gracillariidae							
<i>Caloptilia populetorum</i> (ZELLER, 1839)	3				1		
<i>Caloptilia alchimiella</i> (SCOPOLI, 1763)				1	2		
<i>Caloptilia stigmatella</i> (FABRICIUS, 1781)					1		
<i>Aspilapteryx tringipennella</i> (ZELLER, 1839)					1		Pd
<i>Phyllonorycter kleemannellus</i> (FABRICIUS, 1781)		1			1		Pd
<i>Parornix avellanella</i> (STANTON, 1854)				2			Pd
<i>Phyllocnistis saligna</i> (ZELLER, 1839)					1		Pd
Yponomeutidae							
<i>Swammerdamia compunctella</i> (HER.-SCH., 1855)				1			

<i>Cedestis gysseleniella</i> ZELLER, 1839					1		
<i>Cedestis subfasciella</i> (STEPHENS, 1834)					1		Pd
<i>Ocnerostoma piniariellum</i> ZELLER, 1847					1	1)	
<i>Prays fraxinellus</i> (BJERKANDER, 1784)	1						
<i>Argyresthia glabratella</i> (ZELLER, 1847)					1		
<i>Argyresthia bergiella</i> (RATZEBURG, 1840)				1			Pd
<i>Argyresthia abdominalis</i> ZELLER, 1839					5-10		Pd
<i>Argyresthia brockeella</i> (HÜBNER, 1813)					2		
<i>Argyresthia curvella</i> (LINNAEUS, 1761)					1		Pd
<i>Argyresthia retinella</i> ZELLER, 1839					11-30		
<i>Argyresthia conjugella</i> ZELLER, 1839					1		
Plutellidae							
<i>Plutella xylostella</i> (LINNAEUS, 1758)	1				1		
Glyphipterigidae							
<i>Glyphipterix thrasonella</i> (SCOPOLI, 1763)	1						
<i>Glyphipterix equitella</i> (SCOPOLI, 1763)				1			
<i>Glyphipterix forsterella</i> (FABRICIUS, 1781)				1			
Ethmiidae							
<i>Ethmia quadrillemma</i> (GOEZE, 1783)	5-10						
Depressariidae							
<i>Luquetia lobella</i> (DEN. & SCHIFF., 1775)	5-10			2	1		Pd
<i>Agonopterix ocellana</i> (FABRICIUS, 1775)					1		
<i>Agonopterix arenella</i> (DEN. & SCHIFF., 1775)					1		
Oecophoridae							
<i>Denisia similella</i> (HÜBNER, 1796)	1				11-30		
<i>Denisia stipella</i> (LINNAEUS, 1758)					1		
<i>Metalampra cinnamomea</i> (ZELLER, 1839)					1		
<i>Borkhausenia minutella</i> (LINNAEUS, 1758)			1				
<i>Crassa tinctella</i> (HÜBNER, 1796)					1		
<i>Pleurota bicostella</i> (CLERCK, 1759)			1		1		
Elachistidae							
<i>Mendesia farinella</i> (THUNBERG, 1794)			5-10		11-30		
<i>Elachista utonella</i> FREY, 1856				3			Pd
<i>Elachista albidella</i> NYLANDER, 1848					2		
<i>Elachista albifrontella</i> (HÜBNER, 1817)				11-30	5-10		
<i>Elachista humilis</i> ZELLER, 1850				3			Pd
<i>Elachista maculicerusella</i> BRUAND, 1859		1		11-30		1)	
<i>Elachista argentella</i> (CLERCK, 1759)					2		
<i>Elachista pollinariella</i> ZELLER, 1839				11-30	11-30	1)	Pd
<i>Elachista pullicomella</i> ZELLER, 1839			2				Pd
Agonoxenidae							
<i>Blastodacna atra</i> (HAWORTH, 1828)					1		Pd
Scythrididae							
<i>Scythris palustris</i> (ZELLER, 1855)	1						Pd

Batrachedridae							
<i>Batrachedra pinicolella</i> (ZELLER, 1839)					11-30	1)	
Coleophoridae							
<i>Coleophora flavipennella</i> (DUPONCHEL, 1843)			1				Pd
<i>Coleophora milvipennis</i> ZELLER, 1839			2	1			
<i>Coleophora siccifolia</i> STANTON, 1856				2			Pd
<i>Coleophora serratella</i> (LINNAEUS, 1761)			5	3			
<i>Coleophora lusciniaepennella</i> (TREITSCHKE, 1833)		2					Pd
<i>Coleophora glitzella</i> HOFMANN, 1869					1		Pd
<i>Coleophora trifolii</i> (CURTIS, 1832)					1		
<i>Coleophora ptarmicia</i> WALSINGHAM, 1910					1		PL
<i>Coleophora trifariella</i> ZELLER, 1849					1		Pd
<i>Coleophora deauratella</i> LIENIG & ZELLER, 1846	1						
<i>Coleophora mayrella</i> (HÜBNER, 1813)	1						
<i>Coleophora betulella</i> HEINEMANN, 1876					1		
<i>Coleophora ibipennella</i> ZELLER, 1849					2		
<i>Coleophora vibicigerella</i> ZELLER, 1839					5-10	1)	
<i>Coleophora conspicuella</i> ZELLER, 1849					11-30		Pd
<i>Coleophora pennella</i> (DEN. & SCHIFF., 1775)					1		
<i>Coleophora caespitiella</i> ZELLER, 1839			2	5-10			
<i>Coleophora alticolella</i> ZELLER, 1849			2				
<i>Coleophora taeniipennella</i> HER.-SCH., 1855					1		
<i>Coleophora therinella</i> TENGSTRÖM, 1848					1		
<i>Coleophora squamosella</i> STANTON, 1856					1		Pd
<i>Coleophora vestianella</i> (LINNAEUS, 1758)					1		
<i>Coleophora striatipennella</i> TENGSTRÖM, 1848					2	1)	
<i>Coleophora artemisiella</i> SCOTT, 1861					11-30	1)	Pd
Blastobasidae							
<i>Blastobasis phycidella</i> (ZELLER, 1839)					1		Pd
<i>Hypatopa binotella</i> (THUNBERG, 1794)					5-10		
Amphisbatidae							
<i>Pseudatemelia elsae</i> SVENSSON, 1982					11-30		PL
Cosmopterigidae							
<i>Cosmopterix orichalcea</i> STANTON, 1861	1				1		
Gelechiidae							
<i>Aristotelia brizella</i> (TREITSCHKE, 1833)	1						
<i>Metzneria metzneriella</i> (STANTON, 1851)			1	5-10			
<i>Ptocheuusa inopella</i> (ZELLER, 1839)					31-100		
<i>Argolamprotes micella</i> (DEN. & SCHIFF., 1775)			3				

<i>Monochroa rumicetella</i> (HOFMANN, 1868)			2				Pd
<i>Monochroa servella</i> (ZELLER, 1839)					1		PL (!)
<i>Monochroa niphognatha</i> (GOZMÁNY, 1953)	1						
<i>Eulamprotes wilkella</i> (LINNAEUS, 1758)						1)	
<i>Eulamprotes superbella</i> (ZELLER, 1839)			4				Pd
<i>Eulamprotes unicolorella</i> (DUPONCHEL, 1843)					5-10		Pd
<i>Bryotropha terrella</i> (DEN. & SCHIFF., 1775)					5-10		
<i>Bryotropha desertella</i> (DOUGLAS, 1850)					2		
<i>Bryotropha similis</i> (STANTON, 1854)					11-30	1)	
<i>Exoteleia dodecella</i> (LINNAEUS, 1758)				1	>100		
<i>Parachronistis albiceps</i> (ZELLER, 1839)					1		
<i>Teleiodes luculellus</i> (HÜBNER, 1813)	1				1		
<i>Teleiodes wagaie</i> (NOWICKI, 1860)	3		1				
<i>Carpatolechia alburnellus</i> (ZELLER, 1839)					1		
<i>Pseudotelphusa paripunctella</i> (THUNBERG, 1794)			11-30				
<i>Carpatolechia proximella</i> (HÜBNER, 1796)		1	3	1			
<i>Carpatolechia aenigma</i> SATTTLER, 1983					1		PL (!)
<i>Teleiopsis diffinis</i> (HAWORTH, 1828)			2		1		Pd (!)
<i>Pseudotelphusa scalella</i> (SCOPOLI, 1763)					5-10		
<i>Altenia scriptella</i> (HÜBNER, 1796)				1			
<i>Gelechia sabinella</i> (ZELLER, 1839)					1		Pd
<i>Chionodes luctuellus</i> (HÜBNER, 1793)				5-10			
<i>Neofriseria peliella</i> (TREITSCHKE, 1835)					5-10		
<i>Euscrobipalpa acuminatella</i> (SIRCOM, 1850)			1				
<i>Sophronia semicostella</i> (HÜBNER, 1813)					31-100	1)	
<i>Sophronia chilonella</i> (TREITSCHKE, 1833)					31-100	1)	Pd
<i>Sophronia humerella</i> (DEN. & SCHIFF., 1775)					1		
<i>Syncopacma sangiella</i> (STANTON, 1863)	4						Pd
<i>Neofaculta infernella</i> (HER.-SCH., 1854)	1		31-100				
<i>Neofaculta ericetella</i> (GEYER, 1832)			11-30		5-10		
<i>Dichomeris marginella</i> (FABRICIUS, 1781)				1			Pd
<i>Dichomeris ustalella</i> (FABRICIUS, 1794)	1						
<i>Dichomeris limosella</i> (SCHLÄGER, 1849)		1					PL (!)
<i>Brachmia dimidiella</i> (DEN. & SCHIFF., 1775)						1)	
<i>Brachmia blandella</i> (FABRICIUS, 1798)					1		
<i>Brachmia inornatella</i> (DOUGLAS, 1850)					1		
<i>Helcystogramma lutatellum</i> (HER.-SCH., 1854)				1		1)	
<i>Helcystogramma rufescens</i> (HAWORTH, 1828)	1			1	1		

<i>Helcystogramma albinerve</i> (GERASIMOV, 1929)	1				3		
<i>Acompsia cinerella</i> (CLERCK, 1759)				1	5-10		
Limacodidae							
<i>Apoda limacodes</i> (HUFNAGEL, 1766)					5-10		
Zygaenidae							
<i>Adscita statices</i> (LINNAEUS, 1758)	31-100						
Cossidae							
<i>Phragmataecia castaneae</i> (HÜBNER, 1790)					1		
<i>Cossus cossus</i> (LINNAEUS, 1758)	5-10				1		
Tortricidae							
<i>Phtheochroa inopiana</i> (HAWORTH, 1811)	1						
<i>Phtheochroa sodaliana</i> (HAWORTH, 1811)					2		
<i>Phalonidia manniana</i> (FISCHER V.R., 1839)	11-30				1		
<i>Gynnidomorpha permixtana</i> (DEN. & SCHIFF., 1775)	2				1		
<i>Agapeta hamana</i> (LINNAEUS, 1758)				1			
<i>Aethes hartmanniana</i> (CLERCK, 1759)					2		
<i>Aethes margaritana</i> (HAWORTH, 1811)					2		
<i>Aethes triangulana</i> (TREITSCHKE, 1835)		2					
<i>Aethes rutilana</i> (HÜBNER, 1817)					2		PL (!)
<i>Aethes smeathmanniana</i> (FABRICIUS, 1781)			1	1			
<i>Aethes cnicana</i> (WESTWOOD, 1854)				1			Pd
<i>Aethes rubigana</i> (TREITSCHKE, 1830)	11-30						
<i>Cochylidia heydeniana</i> (HER.-SCH., 1851)					1		Pd
<i>Cochylidia moguntiana</i> (RÖSSLER, 1864)					11-30		Pd
<i>Cochylidia implicitana</i> (WOCKE, 1856)					5-10		
<i>Cochylis flaviciliana</i> (WESTWOOD, 1854)					1		
<i>Cochylis dubitana</i> (HÜBNER, 1799)	2						
<i>Tortrix viridana</i> (LINNAEUS, 1758)	5-10						
<i>Aleimma loeflingianum</i> (LINNAEUS, 1758)	1				1		
<i>Acleris comariana</i> (LIENIG & ZELLER, 1846)					1		
<i>Acleris laterana</i> (FABRICIUS, 1794)					1		
<i>Eana derivana</i> (LA HARPE, 1858)					11-30		PL (!)
<i>Cnephasia communana</i> (HER.-SCH., 1851)				1			
<i>Cnephasia asseclana</i> (DEN. & SCHIFF., 1775)	1	2		2			
<i>Cnephasia incertana</i> (TREITSCHKE, 1835)	1			11-30			Pd
<i>Cnephasia pasiuana</i> (HÜBNER, 1799)					2		Pd
<i>Eulia ministrana</i> (LINNAEUS, 1758)	5-10		1	1	1		
<i>Epagoge grotiana</i> (FABRICIUS, 1781)		2					
<i>Paramesia gnomana</i> (CLERCK, 1759)		1					
<i>Capua vulgana</i> (FRÖLICH, 1828)	1				1		

<i>Archips podanus</i> (SCOPOLI, 1763)	11-30				1		
<i>Archips xylosteanus</i> (LINNAEUS, 1758)					2		
<i>Choristoneura hebenstreitella</i> (MÜLLER, 1764)	1						
<i>Ptycholoma lecheanum</i> (LINNAEUS, 1758)	1						
<i>Pandemis corylana</i> (FABRICIUS, 1794)	1				1		
<i>Pandemis cerasana</i> (HÜBNER, 1786)	1			1	5-10		Pd
<i>Pandemis heparana</i> (DEN. & SCHIFF., 1775)	1						
<i>Lozotaenia forsterana</i> (FABRICIUS, 1781)				1	3		
<i>Aphelia unitana</i> (HÜBNER, 1799)	5-10	5-10					Pd
<i>Dichelia histrionana</i> (FRÖLICH, 1828)				4	1		Pd
<i>Clepsia spectrana</i> (TREITSCHKE, 1830)	1			11-30			
<i>Bactra lancealana</i> (HÜBNER, 1799)		5-10		11-30	5-10		
<i>Bactra furfurana</i> (HAWORTH, 1811)	1						
<i>Endothenia nigricostana</i> (HAWORTH, 1811)	1						Pd
<i>Endothenia quadrimaculana</i> (HAWORTH, 1811)	1						
<i>Pseudosciaphila branderiana</i> (LINNAEUS, 1758)				1			
<i>Apotomis semifasciana</i> (HAWORTH, 1811)	2			2	1		Pd
<i>Apotomis turbidana</i> HÜBNER, 1825	5-10				5-10		
<i>Apotomis betuletana</i> (HAWORTH, 1811)				1	5-10		
<i>Apotomis capreana</i> (HÜBNER, 1817)		1		1	1		
<i>Apotomis sauciana</i> (FRÖLICH, 1828)					1		Pd
<i>Orthotaenia undulana</i> (DEN. & SCHIFF., 1775)		5-10		2			
<i>Hedya salicella</i> (LINNAEUS, 1758)	5-10						
<i>Hedya nubiferana</i> (HAWORTH, 1811)	1			11-30	5-10		
<i>Hedya pruniana</i> (HÜBNER, 1799)				1			
<i>Hedya dimidiana</i> (CLERCK, 1759)	2						Pd
<i>Metendothenia atropunctana</i> (ZETTERSTEDT, 1839)	1		1		5-10		
<i>Celypha rufana</i> (SCOPOLI, 1763)					5-10	1)	
<i>Celypha striana</i> (DEN. & SCHIFF., 1775)				1	2		
<i>Celypha cespitana</i> (HÜBNER, 1817)					1		
<i>Celypha lacunana</i> (DEN. & SCHIFF., 1775)	1	11-30	5-10	5-10			
<i>Celypha siderana</i> (TREITSCHKE, 1835)					1		Pd (!)
<i>Celypha rivulana</i> (SCOPOLI, 1763)	5-10						
<i>Olethreutes arcuellus</i> (CLERCK, 1759)	2				1		
<i>Olethreutes umbrosanus</i> (FREYER, 1842)	1		1	1			
<i>Olethreutes bipunctatus</i> (FABRICIUS, 1794)			11-30	3			
<i>Piniphila bifasciana</i> (HAWORTH, 1811)					11-30		
<i>Pseudohermenias abietana</i> (FABRICIUS, 1787)				1			

<i>Thiodia citrana</i> (HÜBNER, 1799)					1		
<i>Spilonota laricana</i> (HEINEMANN, 1863)					1		
<i>Epinotia trigonella</i> (LINNAEUS, 1758)					1		
<i>Epinotia abbreviana</i> (FABRICIUS, 1794)					1		
<i>Epinotia bilunana</i> (HAWORTH, 1811)					1		
<i>Epinotia demarniana</i> (FISCHER V.R., 1840)					1		
<i>Epinotia immundana</i> (FISCHER V.R., 1839)	1						
<i>Epinotia tetraquetra</i> (HAWORTH, 1811)			1				
<i>Epinotia tenerana</i> (DEN. & SCHIFF., 1775)		1					
<i>Epinotia tedella</i> (CLERCK, 1759)	1		1	1	11-30		
<i>Epinotia rubiginosana</i> (HER.-SCH., 1851)					5-10		Pd
<i>Epinotia cruciana</i> (LINNAEUS, 1761)		1					
<i>Epinotia nanana</i> (TREITSCHKE, 1835)					1		
<i>Eucosma cana</i> (HAWORTH, 1811)	5-10						
<i>Eucosma metzneriana</i> (TREITSCHKE, 1830)	11-30				5-10		
<i>Gypsonoma dealbana</i> (FRÖLICH, 1828)	1				2		
<i>Epiblema foenellum</i> (LINNAEUS, 1758)	1						Pd
<i>Epiblema sticticanum</i> (FABRICIUS, 1794)	2						
<i>Epiblema scutulanum</i> (DEN. & SCHIFF., 1775)				1			Pd
<i>Epiblema graphanum</i> (TREITSCHKE, 1835)					5-10	1)	
<i>Notocelia cynosbatella</i> (LINNAEUS, 1758)				1			
<i>Notocelia uddmanniana</i> (LINNAEUS, 1758)	1	1			1		
<i>Notocelia trimaculana</i> (HAWORTH, 1811)	1			1			Pd
<i>Retinia resinella</i> (LINNAEUS, 1758)					5-10		
<i>Rhyacionia buoliana</i> (DEN. & SCHIFF., 1775)					11-30	1)	
<i>Rhyacionia pinicolana</i> (DOUBLEDAY, 1849)					11-30		
<i>Rhyacionia pinivorana</i> (LIENIG & ZELLER, 1846)			1		>100		
<i>Ancylis laetana</i> (FABRICIUS, 1775)	1				1		
<i>Ancylis unculana</i> (HAWORTH, 1811)	5-10	1	1	5-10	2		
<i>Ancylis uncella</i> (DEN. & SCHIFF., 1775)			5-10		2		Pd
<i>Ancylis mitterbacheriana</i> (DEN. & SCH., 1775)	5-10				31-100		
<i>Ancylis upupana</i> (TREITSCHKE, 1835)	2						
<i>Ancylis geminana</i> (DONOVAN, 1806)	1			1	1		
<i>Ancylis diminutana</i> (HAWORTH, 1811)			1	1			Pd
<i>Ancylis achatana</i> (DEN. & SCHIFF., 1775)			5-10	1	1		
<i>Ancylis badiana</i> (DEN. & SCHIFF., 1775)			1				
<i>Ancylis paludana</i> (BARRETT, 1871)			1				

<i>Ancylis apicella</i> (DEN. & SCHIFF., 1775)	1	1	5-10	3	1		
<i>Cydia splendana</i> (HÜBNER, 1799)					1		
<i>Cydia nigricana</i> (FABRICIUS, 1794)					3		
<i>Cydia coniferana</i> (SAXESEN, 1840)					5-10		Pd
<i>Cydia pomonella</i> (LINNAEUS, 1758)					1		
<i>Cydia gemmiferana</i> (TREITSCHKE, 1835)			2				Pd
<i>Cydia funebrana</i> (TREITSCHKE, 1835)				1			Pd
<i>Lathronympha strigana</i> (FABRICIUS, 1775)	1			5-10	1		
<i>Pammene fasciana</i> (LINNAEUS, 1761)					1		Pd
<i>Strophedra weirana</i> (DOUGLAS, 1850)		1					Pd
<i>Dichrorampha petiverella</i> (LINNAEUS, 1758)					11-30		
<i>Dichrorampha alpinana</i> (TREITSCHKE, 1830)		2			2		Pd
<i>Dichrorampha plumbagana</i> (TREITSCHKE, 1830)					11-30		Pd
<i>Dichrorampha incognitana</i> (KR. & MASLOWSKI, 1933)					2		Pd
<i>Dichrorampha agilana</i> (TENGGSTRÖM, 1848)					31-100		Pd
<i>Dichrorampha plumbana</i> (SCOPOLI, 1763)		1					Pd
Choreutidae							
<i>Anthophila fabriciana</i> (LINNAEUS, 1767)		1			5-10		
<i>Prochoreutis sehestediana</i> (FABRICIUS, 1776)					1		Pd
Epermeniidae							
<i>Epermenia falciformis</i> (HAWORTH, 1828)		3					PL
Pterophoridae							
<i>Platyptilia nemoralis</i> (ZELLER, 1841)					1		Pd
<i>Platyptilia gonodactyla</i> (DEN. & SCHIFF., 1775)	1						
<i>Stenoptilia pterodactyla</i> (LINNAEUS, 1761)						1)	
<i>Stenoptilia bipunctidactyla</i> (SCOPOLI, 1763)					1		
<i>Geina didactyla</i> (LINNAEUS, 1758)		1					
<i>Oxyptilus pilosellae</i> (ZELLER, 1841)						1)	
<i>Oxyptilus parvidactylus</i> (HAWORTH, 1811)					5-10	1)	
<i>Pterophorus pentadactylus</i> (LINNAEUS, 1758)	5-10				2		
<i>Emmelina monodactyla</i> (LINNAEUS, 1758)					11-30	1)	
Pyralidae							
<i>Pyralis farinalis</i> (LINNAEUS, 1758)	1				1		
<i>Pyralis regalis</i> (DEN. & SCHIFF., 1775)				1			
<i>Hypsopygia costalis</i> (FABRICIUS, 1775)					1		

<i>Cryptoblabes bistriga</i> (HAWORTH, 1811)					1		
<i>Elegia similella</i> (ZINCKEN, 1818)	1				1		
<i>Ortholepis betulae</i> (GOEZE, 1778)					1		
<i>Pyla fusca</i> (HAWORTH, 1811)					1		
<i>Sciota fumella</i> (EVERSMANN, 1844)	1						
<i>Sciota rhenella</i> (ZINCKEN, 1818)					2		Pd
<i>Sciota adelphella</i> (FISCHER VON R., 1836)					1		
<i>Pempelia palumbella</i> (DEN. & SCHIFF., 1775)					2		Pd
<i>Pempelia formosa</i> (HAWORTH, 1811)			1		2		
<i>Dioryctria abietella</i> (DEN. & SCHIFF., 1775)			1	1	5-10		
<i>Dioryctria simplicella</i> HEINEMANN, 1863					2		Pd
<i>Hypochalcia ahenella</i> (DEN. & SCHIFF., 1775)				1	1		
<i>Eurhodope cirrigerella</i> (ZINCKEN, 1818)					2		
<i>Assara terebrella</i> (ZINCKEN, 1818)	1				2		
<i>Homoeosoma nimbellum</i> (DUPONCHEL, 1837)					1	1)	Pd (!)
<i>Ephestia elutella</i> (HÜBNER, 1796)					1		Pd
<i>Anerastia lotella</i> (HÜBNER, 1813)	1				5-10		
<i>Scoparia subfusca</i> HAWORTH, 1811					1		Pd
<i>Scoparia ambigualis</i> (TREITSCHKE, 1829)	1	3		1	5-10		
<i>Scoparia pyralella</i> (DEN. & SCHIFF., 1775)	1				5-10		
<i>Eudonia murana</i> (CURTIS, 1827)	1						Pd
<i>Eudonia truncicolella</i> (STANTON, 1849)	1						
<i>Chilo phragmitellus</i> (HÜBNER, 1810)	1						
<i>Chrysoteuchia culmella</i> (LINNAEUS, 1758)	1	5-10			31-100	1)	
<i>Crambus pascuellus</i> (LINNAEUS, 1758)				2	31-100		
<i>Crambus ericellus</i> (HÜBNER, 1813)					1		
<i>Crambus pratellus</i> (LINNAEUS, 1758)	1				5-10	1), 2)	
<i>Crambus lathoniellus</i> (ZINCKEN, 1817)	5-10	1	5-10	5-10	>100	1), 2)	
<i>Catoptria permutatella</i> (HER.-SCH., 1848)					2		
<i>Pediasia luteella</i> (DEN. & SCHIFF., 1775)					5-10	2)	
<i>Platytes cerussellus</i> (DEN. & SCHIFF., 1775)	11-30				>100	1), 2)	
<i>Schoenobius gigantellus</i> (DEN. & SCHIFF., 1775)	1						
<i>Donacaula forficellus</i> (THUNBERG, 1794)				1			
<i>Elophila nymphaeata</i> (LINNAEUS, 1758)	5-10	1			1		
<i>Cataclysta lemnata</i> (LINNAEUS, 1758)		5-10		5-10			
<i>Parapoynx stratiotatum</i> (LINNAEUS, 1758)	2						
<i>Evergestis forficalis</i> (LINNAEUS, 1758)	1						
<i>Evergestis pallidata</i> (HUFNAGEL, 1767)	1						
<i>Evergestis aenealis</i> (DEN. & SCHIFF., 1775)					1		
<i>Udea lutealis</i> (HÜBNER, 1809)	1						

<i>Udea olivalis</i> (DEN. & SCHIFF., 1775)	1	5-10		2			
<i>Udea hamalis</i> (THUNBERG, 1788)				1			
<i>Opsibotys fuscalis</i> (DEN. & SCHIFF., 1775)			2				
<i>Loxostege turbidalis</i> (TREITSCHKE, 1829)	2				31-100	1), 2)	
<i>Pyrausta purpuralis</i> (LINNAEUS, 1758)	1						
<i>Pyrausta aerealis</i> (HÜBNER, 1793)	4				31-100		
<i>Nascia ciliaris</i> (HÜBNER, 1796)	2	1					
<i>Sitochroa verticalis</i> (LINNAEUS, 1758)	1				31-100	2)	
<i>Perinephela lancealis</i> (DEN. & SCHIFF., 1775)	5-10						
<i>Phlyctaenia coronata</i> (HUFNAGEL, 1767)	1			1	1		
<i>Phlyctaenia perlucidalis</i> (HÜBNER, 1809)	1			1	1		
<i>Ostrinia palustralis</i> (HÜBNER, 1796)	11-30		1		1		
<i>Ostrinia nubilalis</i> (HÜBNER, 1796)	1	1		5-10	1		
<i>Eurrhynpara hortulata</i> (LINNAEUS, 1758)	1	11-30			1		
<i>Paratalanta hyalinialis</i> (HÜBNER, 1796)				2	11-30		
<i>Agrotera nemoralis</i> (SCOPOLI, 1763)	1		1				
<i>Diasemia reticularis</i> (LINNAEUS, 1761)	1						
Lasiocampidae							
<i>Macrothylacia rubi</i> (LINNAEUS, 1758)	5-10	1			5-10	1)	
<i>Dendrolimus pini</i> (LINNAEUS, 1758)	11-30				5-10		
<i>Gastropacha populifolia</i> (DEN. & SCHIFF., 1775)	1				1		
Sphingidae							
<i>Sphinx ligustri</i> LINNAEUS, 1758	1						
<i>Sphinx pinastri</i> LINNAEUS, 1758	11-30		1		5-10		
<i>Mimas tiliae</i> (LINNAEUS, 1758)	1						
<i>Smerinthus ocellatus</i> (LINNAEUS, 1758)	1	1	3	1	1		
<i>Laothoe populi</i> (LINNAEUS, 1758)	1	1		2	1		
<i>Laothoe amurensis</i> (FISCHER V. WALDHEIM, 1830)	4						
<i>Deilephila elpenor</i> (LINNAEUS, 1758)	1				1		
<i>Deilephila porcellus</i> (LINNAEUS, 1758)	5-10						
Hesperiidae							
<i>Erynnis tages</i> (LINNAEUS, 1758)	1						
<i>Pyrgus malvae</i> (LINNAEUS, 1758)	1						
<i>Carterocephalus palaemon</i> (PALLAS, 1771)	1						
<i>Carterocephalus silvicolus</i> (MEIGEN, 1829)	1						
<i>Thymelicus sylvestris</i> (PODA, 1761)	11-30			1	5-10		
<i>Hesperia comma</i> (LINNAEUS, 1758)				5-10			
<i>Ochlodes venatus</i> (BREMER & GREY, 1853)	1			1			
Papilionidae							
<i>Parnassius mnemosyne</i> (LINNAEUS, 1758)			1				
Pieridae							
<i>Pieris brassicae</i> (LINNAEUS, 1758)	5-10						

<i>Pieris rapae</i> (LINNAEUS, 1758)	1					
<i>Pieris napi</i> (LINNAEUS, 1758)	1					
<i>Pontia daplidice</i> (LINNAEUS, 1758)	1					
<i>Anthocharis cardamines</i> (LINNAEUS, 1758)	5-10					
<i>Colias palaeno</i> (LINNAEUS, 1761)	1					
Lycaenidae						
<i>Lycaena phlaeas</i> (LINNAEUS, 1761)	11-30					
<i>Lycaena dispar</i> (HAWORTH, 1803)	1					
<i>Lycaena hippothoe</i> (LINNAEUS, 1761)	11-30					
<i>Celastrina argiolus</i> (LINNAEUS, 1758)	1					
<i>Cyaniris semiargus</i> (ROTTEMBURG, 1775)	1					
<i>Polyommatus amandus</i> (SCHNEIDER, 1792)	5-10				3	
<i>Polyommatus icarus</i> (ROTTEMBURG, 1775)	5-10				1	
Nymphalidae						
<i>Limenitis populi</i> (LINNAEUS, 1758)	11-30					
<i>Nymphalis antiopa</i> (LINNAEUS, 1758)	1					
<i>Inachis io</i> (LINNAEUS, 1758)	5-10					
<i>Aglais urticae</i> (LINNAEUS, 1758)	5-10	1		1	5-10	
<i>Vanessa atalanta</i> (LINNAEUS, 1758)	1					
<i>Polygonia c-album</i> (LINNAEUS, 1758)	1					
<i>Araschnia levana</i> (LINNAEUS, 1758)	1					
<i>Brenthis ino</i> (ROTTEMBURG, 1775)	5-10	11-30			11-30	
<i>Boloria selene</i> (DEN. & SCHIFF., 1775)	1				5-10	
<i>Procllossiana eunomia</i> (ESPER, 1799)	31-100					
<i>Melitaea cinxia</i> (LINNAEUS, 1758)	1					
<i>Melitaea athalia</i> (ROTTEMBURG, 1775)	11-30				11-30	
<i>Euphydryas maturna</i> (LINNAEUS, 1758)	1					
<i>Euphydryas aurinia</i> (ROTTEMBURG, 1775)	1					
Satyridae						
<i>Erebia medusa</i> (DEN. & SCHIFF., 1775)	1					
<i>Maniola jurtina</i> (LINNAEUS, 1758)				1	5-10	
<i>Coenonympha pamphilus</i> (LINNAEUS, 1758)	11-30				5-10	1)
<i>Coenonympha hero</i> (LINNAEUS, 1761)			2			
<i>Coenonympha glycerion</i> (BORKHAUSEN, 1788)	11-30				11-30	1)
<i>Pararge aegeria</i> (LINNAEUS, 1758)	1					
<i>Lasiommata megera</i> (LINNAEUS, 1767)	1					
<i>Lasiommata maera</i> (LINNAEUS, 1758)						3)
<i>Lopinga achine</i> (SCOPOLI, 1763)						3)
Drepanidae						
<i>Falcaria lacertinaria</i> (LINNAEUS, 1758)	1		2		1	
<i>Drepana falcataria</i> (LINNAEUS, 1758)	1	2	3	1	1	
<i>Drepana curvatula</i> (BORKHAUSEN, 1790)	5-10			1	2	

<i>Sabra harpagula</i> (ESPER, 1786)	1						
<i>Thyatira batis</i> (LINNAEUS, 1758)	1			1	1		
<i>Habrosyne pyritoides</i> (HUFNAGEL, 1766)	5-10	1			1		
<i>Tethea or</i> (DEN. & SCHIFF., 1775)	1		1				
<i>Tetheella fluctuosa</i> (HÜBNER, 1803)				1	1		
<i>Ochropacha duplaris</i> (LINNAEUS, 1761)	5-10						
Geometridae							
<i>Abraxas sylvatus</i> (SCOPOLI, 1763)		2			1		
<i>Lomaspilis marginata</i> (LINNAEUS, 1758)	11-30	5-10	1	11-30	5-10		
<i>Lomaspilis opis</i> (BUTLER, 1878)	13			3	4		
<i>Ligdia adustata</i> (DEN. & SCHIFF., 1775)	5-10	2			5-10		
<i>Chiasmia notata</i> (LINNAEUS, 1758)	1	2	5-10	1	5-10		
<i>Chiasmia alternata</i> (DEN. & SCHIFF., 1775)	1	1		1	5-10		
<i>Chiasmia signaria</i> (HÜBNER, 1809)	1			1	1	2)	
<i>Chiasmia liturata</i> (CLERCK, 1759)			5-10	3	5-10	1), 2)	
<i>Chiasmia wauaria</i> (LINNAEUS, 1758)	1	2					
<i>Chiasmia clathrata</i> (LINNAEUS, 1758)	5-10		5-10	1	>100	1)	
<i>Chiasmia brunneata</i> (THUNBERG, 1784)					2		
<i>Pseudopanthera macularia</i> (LINNAEUS, 1758)	1						
<i>Plagodis pulveraria</i> (LINNAEUS, 1758)	1		1	1			
<i>Plagodis dolabraria</i> (LINNAEUS, 1767)	1				1		
<i>Petrophora chlorosata</i> (SCOPOLI, 1763)	1		5-10		5-10		
<i>Opisthograptis luteolata</i> (LINNAEUS, 1758)					1		
<i>Cepphis advenaria</i> (HÜBNER, 1790)	11-30	5-10	11-30	5-10	11-30		
<i>Odontopera bidentata</i> (CLERCK, 1759)	5-10		1				
<i>Angerona prunaria</i> (LINNAEUS, 1758)	1	1		2	2		
<i>Lycia hirtaria</i> (CLERCK, 1759)	1						
<i>Biston betularius</i> (LINNAEUS, 1758)	1	1			5-10		
<i>Alcis repandata</i> (LINNAEUS, 1758)		1		1	1		
<i>Hypomecis roboraria</i> (DEN. & SCHIFF., 1775)	1	2		2	1		
<i>Hypomecis punctinalis</i> (SCOPOLI, 1763)	1	1	1	1	5-10		
<i>Parectropis similaria</i> (HUFNAGEL, 1767)	1			1			
<i>Aethalura punctulata</i> (DEN. & SCHIFF., 1775)		1	5-10				
<i>Ematurga atomaria</i> (LINNAEUS, 1758)	5-10			1	5-10	2)	
<i>Bupalus piniarius</i> (LINNAEUS, 1758)			5-10		>100		
<i>Cabera pusaria</i> (LINNAEUS, 1758)	1	1	5-10	2	1		
<i>Cabera exanthemata</i> (SCOPOLI, 1763)	5-10	2	5-10	11-30	4		
<i>Lomographa bimaculata</i> (FABRICIUS, 1775)	1	1			1		
<i>Lomographa temerata</i> (DEN. & SCHIFF., 1775)	1				2		
<i>Campaea margaritata</i> (LINNAEUS, 1767)				1	1		Pd (!)

<i>Hylaea fasciaria</i> (LINNAEUS, 1758)					2		
<i>Charissa ambiguata</i> (DUPONCHEL, 1830)					1		Pd (!)
<i>Stona lineata</i> (SCOPOLI, 1763)				1	31-100		Pd (!)
<i>Geometra papilionaria</i> (LINNAEUS, 1758)		1		1	5-10		
<i>Comibaena bajularia</i> (DEN. & SCHIFF., 1775)	1				5-10		
<i>Antonechloris smaragdaria</i> (FABRICIUS, 1787)	1				11-30		
<i>Chlorissa viridata</i> (LINNAEUS, 1758)					2		
<i>Jodis putata</i> (LINNAEUS, 1758)	1			1	1		
<i>Cyclophora pendularia</i> (CLERCK, 1759)			1	2			
<i>Cyclophora annularia</i> (FABRICIUS, 1775)	1						
<i>Cyclophora albipunctata</i> (HUFNAGEL, 1767)	1		1	1	1		
<i>Cyclophora porata</i> (LINNAEUS, 1767)					2		
<i>Cyclophora punctaria</i> (LINNAEUS, 1758)	1		5-10	1	11-30		
<i>Cyclophora linearia</i> (HÜBNER, 1799)			1		1		
<i>Timandra comae</i> SCHMIDT, 1931	11-30	1	5-10	1	5-10		
<i>Scopula immorata</i> (LINNAEUS, 1758)	5-10			5-10	5-10		
<i>Scopula nemoraria</i> (HÜBNER, 1799)			5-10				
<i>Scopula nigropunctata</i> (HUFNAGEL, 1767)				1	5-10		
<i>Scopula ornata</i> (SCOPOLI, 1763)	1						
<i>Scopula rubiginata</i> (HUFNAGEL, 1767)	1				5-10		
<i>Scopula immutata</i> (LINNAEUS, 1758)	5-10			5-10			
<i>Scopula ternata</i> SCHRANK, 1802	5-10			5-10	5-10	2)	
<i>Scopula floslactata</i> (HAWORTH, 1809)	1						
<i>Idaea dilutaria</i> (HÜBNER, 1799)			1				Pd
<i>Idaea aversata</i> (LINNAEUS, 1758)					1		
<i>Lythria cruentaria</i> (HUFNAGEL, 1767)					5-10	2)	
<i>Orthonama vittata</i> (BORKHAUSEN, 1794)	5-10	1	11-30	4	1		
<i>Xanthorhoe biriviata</i> (BORKHAUSEN, 1794)	1						
<i>Xanthorhoe designata</i> (HUFNAGEL, 1767)	1			1			
<i>Xanthorhoe spadicearia</i> (DEN. & SCHIFF., 1775)	1		5-10	1			
<i>Xanthorhoe ferrugata</i> (CLERCK, 1759)	1	2			3		
<i>Xanthorhoe quadrifasciata</i> (CLERCK, 1759)					1		
<i>Xanthorhoe montanata</i> (DEN. & SCHIFF., 1775)	1	1		11-30			
<i>Xanthorhoe fluctuata</i> (LINNAEUS, 1758)					1		
<i>Catarhoe cuculata</i> (HUFNAGEL, 1767)			1		2		
<i>Epirrhoe tristata</i> (LINNAEUS, 1758)	1			1	5-10		
<i>Epirrhoe alternata</i> (MÜLLER, 1764)	1	5-10	5-10	1	11-30	1)	
<i>Epirrhoe rivata</i> (HÜBNER, 1813)				1			
<i>Epirrhoe tartuensis</i> MOELS, 1965		2	2				
<i>Costaconvexa polygrammata</i> (BORKHAUSEN, 1794)					1		

<i>Camptogramma bilineatum</i> (LINNAEUS, 1758)	1				5-10		
<i>Mesoleuca albicillata</i> (LINNAEUS, 1758)	1				1		
<i>Lampropteryx suffumata</i> (DEN. & SCHIFF., 1775)	1						
<i>Lampropteryx otregiata</i> (METCALFE, 1917)	2						
<i>Cosmorhoe ocellata</i> (LINNAEUS, 1758)	1		5-10	1	5-10		
<i>Eulithis prunata</i> (LINNAEUS, 1758)	1	1					
<i>Eulithis populata</i> (LINNAEUS, 1758)				1	1		
<i>Eulithis mellinata</i> (FABRICIUS, 1787)	5-10	2			2		
<i>Eulithis pyrliata</i> (DEN. & SCHIFF., 1775)	1						
<i>Ecliptopera silaceata</i> (DEN. & SCHIFF., 1775)				1			
<i>Ecliptopera capitata</i> (HER.-SCH., 1839)	1		1		1		
<i>Chloroclysta siterata</i> (HUFNAGEL, 1767)			1				
<i>Chloroclysta truncata</i> (HUFNAGEL, 1767)	1	2		5-10	1		
<i>Thera obeliscata</i> (HÜBNER, 1787)	1		11-30	5-10	5-10		
<i>Thera variata</i> (DEN. & SCHIFF., 1775)	1			1			
<i>Eustroma reticulatum</i> (DEN. & SCHIFF., 1775)	1	1					
<i>Electrophaes corylata</i> (THUNBERG, 1792)	1				1		
<i>Colostygia pectinataria</i> (KNOCH, 1781)	5-10			1	1		
<i>Hydriomena furcata</i> (THUNBERG, 1784)			5-10				
<i>Hydriomena impluviata</i> (DEN. & SCHIFF., 1775)	5-10	5-10	5-10	1	1		
<i>Horisme tersata</i> (DEN. & SCHIFF., 1775)					1		
<i>Rheumaptera undulata</i> (LINNAEUS, 1758)	11-30		11-30	1	1		
<i>Euphyia biangulata</i> (HAWORTH, 1809)	2						
<i>Euphyia unangulata</i> (HAWORTH, 1809)	1	1		1	1		
<i>Perizoma alchemillatum</i> (LINNAEUS, 1758)		1		1	11-30		
<i>Perizoma albulatum</i> (DEN. & SCHIFF., 1775)	1						
<i>Perizoma flavofasciatum</i> (THUNBERG, 1792)	1						
<i>Perizoma didymatum</i> (LINNAEUS, 1758)	1						
<i>Eupithecia abietaria</i> (GOEZE, 1781)	5-10			1	5-10		
<i>Eupithecia venosata</i> (FABRICIUS, 1787)					1		
<i>Eupithecia tripunctaria</i> HER.-SCH., 1852			1				
<i>Eupithecia tantillaria</i> BOISDUVAL, 1840	11-30		31-100		1		
<i>Eupithecia selinata</i> HER.-SCH., 1861				3			
<i>Eupithecia plumbeolata</i> (HAWORTH, 1809)	5-10		5-10	5-10	5-10		
<i>Eupithecia centaureata</i> (DEN. & SCHIFF., 1775)					2		
<i>Eupithecia vulgata</i> (HAWORTH, 1809)			5-10				

<i>Eupithecia assimilata</i> DOUBLEDAY, 1856				1	2		
<i>Eupithecia satyrata</i> (HÜBNER, 1813)	5-10		11-30				
<i>Eupithecia intricata</i> (ZETTERSTEDT, 1839)			31-100	1			
<i>Eupithecia absinthiata</i> (CLERCK, 1759)					1		
<i>Eupithecia subumbrata</i> (DEN. & SCHIFF., 1775)	1			1	1	1)	
<i>Eupithecia subfuscata</i> (HAWORTH, 1809)	1		1		1		
<i>Eupithecia exiguata</i> (HÜBNER, 1813)	5-10		11-30	1			
<i>Eupithecia succenturiata</i> (LINNAEUS, 1758)					1		
<i>Rhinoprora debiliata</i> (HÜBNER, 1817)		1		1	1		
<i>Anticollix sparsata</i> (TREITSCHKE, 1828)	1		1				
<i>Hydrelia flammeolaria</i> (HUFNAGEL, 1767)	1	5-10	5-10	5-10	1		
<i>Hydrelia sylvata</i> (DEN. & SCHIFF., 1775)		1					
<i>Euchoeca nebulata</i> (SCOPOLI, 1763)	1	1	5-10	5-10	1		
<i>Asthena albulata</i> (HUFNAGEL, 1767)	1						
<i>Pterapherapteryx sexualata</i> (RETZIUS, 1783)	1			4	5-10		
Notodontidae							
<i>Clostera curtula</i> (LINNAEUS, 1758)	1		1				
<i>Clostera pigra</i> (HUFNAGEL, 1766)	1		5-10		1		
<i>Cerura erminea</i> (ESPER, 1783)					1		
<i>Furcula bicuspis</i> (BORKHAUSEN, 1790)	1						
<i>Notodonta dromedarius</i> (LINNAEUS, 1767)	1			5-10	1		
<i>Notodonta ziczac</i> (LINNAEUS, 1758)	1		1		1		
<i>Drymonia dodonaea</i> (DEN. & SCHIFF., 1775)	5-10			5-10	5-10		
<i>Drymonia velitaris</i> (HUFNAGEL, 1766)	1				3		Pd
<i>Drymonia obliterata</i> (ESPER, 1785)		2					
<i>Pheosia gnoma</i> (FABRICIUS, 1776)	1		5-10		1		
<i>Pterostoma palpinum</i> (CLERCK, 1759)				1			
<i>Leucodonta bicoloria</i> (DEN. & SCHIFF., 1775)	1			3	1		
<i>Ptilodon capucina</i> (LINNAEUS, 1758)	1	1	1	5-10	1		
<i>Gluphisia crenata</i> (ESPER, 1785)	3	2			3		
<i>Phalera bucephala</i> (LINNAEUS, 1758)	5-10	2		5-10	1		
<i>Stauropus fagi</i> (LINNAEUS, 1758)	1				1		
<i>Harpyia milhauseri</i> (FABRICIUS, 1775)			1				
Noctuidae							
<i>Moma alpium</i> (OSBECK, 1778)	1				2		
<i>Acrionicta megacephala</i> (DEN. & SCHIFF., 1775)		1		1	5-10		
<i>Acrionicta cuspis</i> (HÜBNER, 1813)	1				2		
<i>Acrionicta leporina</i> (LINNAEUS, 1758)	1	3		1	1		
<i>Acrionicta strigosa</i> (DEN. & SCHIFF., 1775)	2	1			1		
<i>Acrionicta auricoma</i> (DEN. & SCHIFF., 1775)			5-10				

<i>Acronicta rumicis</i> (LINNAEUS, 1758)	1	1			1		
<i>Craniophora ligustri</i> (DEN. & SCHIFF., 1775)	1						
<i>Simyra albovenosa</i> (GOEZE, 1781)			1				
<i>Macrochilo cribrumalis</i> (HÜBNER, 1793)				1			
<i>Herminia tarsicrinalis</i> (KNOCH, 1782)	1	1		1	5-10		
<i>Herminia grisealis</i> (DEN. & SCHIFF., 1775)	1			1			
<i>Polyopogon tentacularius</i> (LINNAEUS, 1758)	1	1					
<i>Pechipogo strigilata</i> (LINNAEUS, 1758)	1		5-10		1		
<i>Schrankia taenialis</i> (HÜBNER, 1809)	1	5-10		4	4		Pd
<i>Schrankia costaestrigalis</i> (STEPHENS, 1834)				3	1		
<i>Hypenodes humidalis</i> DOUBLEDAY, 1850				1			
<i>Lygephila viciae</i> (HÜBNER, 1822)	1				5-10		
<i>Callistege mi</i> (CLERCK, 1759)	1						
<i>Euclidia glyphica</i> (LINNAEUS, 1758)	1				1		
<i>Laspeyria flexula</i> (DEN. & SCHIFF., 1775)	1				5-10		
<i>Hypena crassalis</i> (FABRICIUS, 1787)					5-10		
<i>Hypena rostralis</i> (LINNAEUS, 1758)			5-10				
<i>Hypena proboscidalis</i> (LINNAEUS, 1758)		5-10			11-30		
<i>Rivula sericealis</i> (SCOPOLI, 1763)	11-30	11-30	5-10	5-10	11-30		
<i>Colobochyla salicalis</i> (DEN. & SCHIFF., 1775)	1	2		1	5-10		
<i>Plusia festucae</i> (LINNAEUS, 1758)					1		
<i>Plusia putnami</i> (GROTE, 1873)	1						
<i>Diachrysia chrysitis</i> (LINNAEUS, 1758)	1	2		1	1		
<i>Autographa gamma</i> (LINNAEUS, 1758)			1				
<i>Autographa pulchrina</i> (HAWORTH, 1809)	1	4			1		
<i>Autographa jota</i> (LINNAEUS, 1758)	1	1		2			
<i>Abrostola tripartita</i> (HUFNAGEL, 1766)	1	1					
<i>Abrostola triplasia</i> (LINNAEUS, 1758)	1			1			
<i>Emmelia trabealis</i> (SCOPOLI, 1763)					2		
<i>Protodeltote pygarga</i> (HUFNAGEL, 1766)	5-10			5-10	1		
<i>Deltote bankiana</i> (FABRICIUS, 1775)	11-30			11-30	1		
<i>Deltote uncula</i> (CLERCK, 1759)	5-10			1			
<i>Deltote deceptoris</i> (SCOPOLI, 1763)	1						
<i>Pseudeustrotia candidula</i> (DEN. & SCHIFF., 1775)	5-10				1		
<i>Trisateles emortualis</i> (DEN. & SCHIFF., 1775)	1						
<i>Cucullia umbratica</i> (LINNAEUS, 1758)	1			1			
<i>Elaphria venustula</i> (HÜBNER, 1790)	1	1	5-10	1	>100		
<i>Caradrina morpheus</i> (HUFNAGEL, 1766)				1			
<i>Hoploclitris octogenaria</i> (GOEZE, 1781)					2		
<i>Hoploclitris ambigua</i> (DEN. & SCHIFF., 1775)				1			

<i>Charanyca trigrammica</i> (HUFNAGEL, 1766)	5-10				5-10		
<i>Dypterygia scabriuscula</i> (LINNAEUS, 1758)	1	1	1	3	1		
<i>Rusina ferruginea</i> (ESPER, 1785)	11-30	1		1	2		
<i>Trachea atriplicis</i> (LINNAEUS, 1758)	1						
<i>Euplexia lucipara</i> (LINNAEUS, 1758)	1	1		1	1		
<i>Hyppa rectilinea</i> (ESPER, 1788)	1				1		
<i>Actinotia polyodon</i> (CLERCK, 1759)					1		
<i>Eucarta virgo</i> (TREITSCHKE, 1835)	1				1		Pd
<i>Apamea sublustris</i> (ESPER, 1788)	1				5-10		
<i>Apamea crenata</i> (HUFNAGEL, 1766)	1	1		3			
<i>Apamea remissa</i> (HÜBNER, 1809)				1	1		
<i>Apamea unanimis</i> (HÜBNER, 1813)	1	1		1			
<i>Apamea anceps</i> (DEN. & SCHIFF., 1775)					1		
<i>Apamea sordens</i> (HUFNAGEL, 1766)	1			3		1)	
<i>Oligia strigilis</i> (LINNAEUS, 1758)		1			5-10		
<i>Oligia latruncula</i> (DEN. & SCHIFF., 1775)	1			1	1		
<i>Oligia fasciuncula</i> (HAWORTH, 1809)					1		
<i>Discestra trifolii</i> (HUFNAGEL, 1766)	1						
<i>Lacanobia w-latinum</i> (HUFNAGEL, 1766)			1		1		
<i>Lacanobia splendens</i> (HÜBNER, 1808)	1		1	1			
<i>Lacanobia oleracea</i> (LINNAEUS, 1758)	1				1		
<i>Lacanobia contigua</i> (DEN. & SCHIFF., 1775)					5-10		
<i>Lacanobia thalassina</i> (HUFNAGEL, 1766)	1		1		1		
<i>Lacanobia suasa</i> (DEN. & SCHIFF., 1775)			1	2	1		
<i>Hada plebeja</i> (LINNAEUS, 1761)	1		5-10	5-10	5-10		
<i>Hadena bicruris</i> (HUFNAGEL, 1766)					1		
<i>Hadena compta</i> (DEN. & SCHIFF., 1775)	1						
<i>Hadena confusa</i> (HUFNAGEL, 1766)	1				1		
<i>Hadena luteago</i> (DEN. & SCHIFF., 1775)					1		
<i>Hadena rivularis</i> (FABRICIUS, 1775)	1	1	1	1	1		
<i>Heliophobus reticulatus</i> (GOEZE, 1781)					1	1)	
<i>Melanchra pisi</i> (LINNAEUS, 1758)	5-10			1	5-10		
<i>Polia bombycina</i> (HUFNAGEL, 1766)					5-10		
<i>Polia hepatica</i> (CLERCK, 1759)					2	1)	
<i>Polia nebulosa</i> (HUFNAGEL, 1766)	1				1		
<i>Mythimna turca</i> (LINNAEUS, 1761)	1				1		
<i>Mythimna conigera</i> (DEN. & SCHIFF., 1775)					1		
<i>Mythimna albipuncta</i> (DEN. & SCHIFF., 1775)					1		
<i>Mythimna pallens</i> (LINNAEUS, 1758)	1				1		
<i>Mythimna obsoleta</i> (HÜBNER, 1803)	1	1					
<i>Mythimna comma</i> (LINNAEUS, 1761)	5-10				5-10	1)	
<i>Mythimna l-album</i> (LINNAEUS, 1767)				1			

<i>Mythimna flamma</i> (CURTIS, 1828)	1		2				
<i>Hyssia cavernosa</i> (EVERSMANN, 1842)	1						
<i>Axylia putris</i> (LINNAEUS, 1761)	1	1		1			
<i>Ochropleura plecta</i> (LINNAEUS, 1761)	1	1	5-10	1	5-10		
<i>Diarsia mendica</i> (FABRICIUS, 1775)	11-30	1		11-30	3		
<i>Diarsia rubi</i> (VIEWEG, 1790)	1		5-10	4			
<i>Noctua pronuba</i> (LINNAEUS, 1758)				1	1		
<i>Anaplectoides prasinus</i> (DEN. & SCHIFF., 1775)		1					
<i>Lycophotia porphyrea</i> (DEN. & SCHIFF., 1775)					2		
<i>Eugraphe sigma</i> (DEN. & SCHIFF., 1775)					1		
<i>Xestia c-nigrum</i> (LINNAEUS, 1758)	11-30			1	1		
<i>Xestia ditrapezium</i> (DEN. & SCHIFF., 1775)		1					
<i>Xestia triangulum</i> (HUFNAGEL, 1766)	5-10			1	1		
<i>Agrotis exclamationis</i> (LINNAEUS, 1758)	5-10			5-10	5-10		
<i>Agrotis cinerea</i> (DEN. & SCHIFF., 1775)			5				
Pantheidae							
<i>Panthea coenobita</i> (ESPER, 1785)	1						
<i>Colocasia coryli</i> (LINNAEUS, 1758)	11-30	2		5-10			
Lymantriidae							
<i>Calliteara pudibunda</i> (LINNAEUS, 1758)	11-30	2	5-10	5-10			
<i>Calliteara abietis</i> (DEN. & SCHIFF., 1775)				1	1		
<i>Euproctis similis</i> (FUESSLY, 1775)		1					
<i>Leucoma salicis</i> (LINNAEUS, 1758)	1						
Nolidae							
<i>Meganola strigula</i> (DEN. & SCHIFF., 1775)					2		
<i>Nola confusalis</i> (HER.-SCH., 1847)	1						
<i>Pseudoips prasinanus</i> (LINNAEUS, 1758)	5-10	1		1	1		
<i>Earias clorana</i> (LINNAEUS, 1761)	1				1		
Arctiidae							
<i>Thumatha senex</i> (HÜBNER, 1808)	1						
<i>Miltochrista miniata</i> (FORSTER, 1771)	1	1			1		
<i>Cybosia mesomella</i> (LINNAEUS, 1758)	5-10	1		3	11-30		
<i>Pelosis muscerda</i> (HUFNAGEL, 1766)		1					
<i>Atolmis rubricollis</i> (LINNAEUS, 1758)	5-10			11-30	31-100		
<i>Eilema sororculum</i> (HUFNAGEL, 1766)	1		11-30	5-10	2	1)	
<i>Eilema complanum</i> (LINNAEUS, 1758)					1		
<i>Spiris striata</i> (LINNAEUS, 1758)					2		
<i>Parasemia plantaginis</i> (LINNAEUS, 1758)	5-10						
<i>Spilosoma lubricipeda</i> (LINNAEUS, 1758)	11-30	5-10	1	11-30	5-10		
<i>Spilosoma luteum</i> (HUFNAGEL, 1766)	1	11-30		3	5-10		
<i>Spilosoma urticae</i> (ESPER, 1789)	4	1		2	1		
<i>Rhyparia purpurata</i> (LINNAEUS, 1758)					1		
<i>Diacrisia sannio</i> (LINNAEUS, 1758)	5-10				1		

<i>Callimorpha dominula</i> (LINNAEUS, 1758)	1				1		
<i>Tyria jacobaeae</i> (LINNAEUS, 1758)		1					

Received: January 13, 2011

Accepted: February 25, 2011