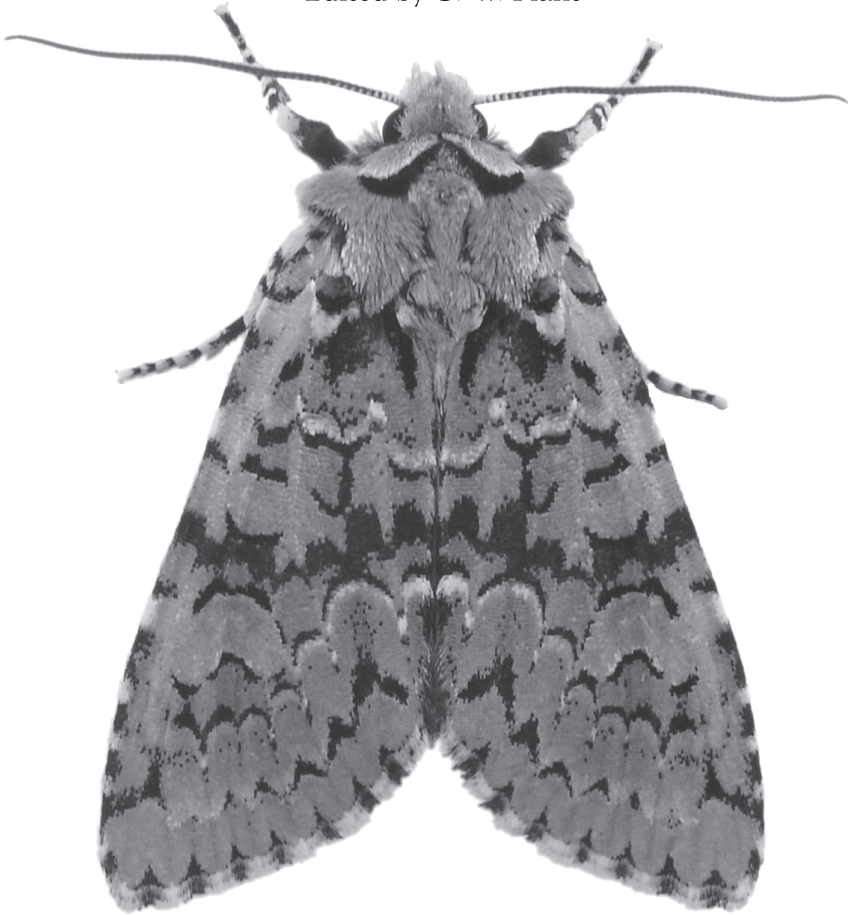


The
Entomologist's Record
and Journal of Variation

Edited by C. W. Plant



Contents and Special Index

Volume 127
2015

ISSN 0013-8916

THE ENTOMOLOGIST'S RECORD

AND JOURNAL OF VARIATION

World List abbreviation: *Entomologist's Rec. J. Var.*

<http://www.entrecord.com>

Published by the Amateur Entomologists' Society
UK Registered Charity number 2674302

Annual subscription for individual subscribers for 2015 is £25.
For institutional and overseas rates please visit the website at www.entrecord.com

Editor

C.W. PLANT, B.Sc., F.R.E.S., F.B.N.A.
14 West Road, Bishops Stortford, Hertfordshire CM23 3QP.
Telephone: 01279 507697 E-mail: cpauk1@ntlworld.com

Who to contact

Material for publication, books for review, obituaries, advertisements – the Editor
Subscriptions, change of address, etc – contact PO Box 8774, London SW7 5ZG
Late or non-arrivals, back issues – contact PO Box 8774, London SW7 5ZG

Back Issues

Volumes more than ten years old may be read at www.biodiversitylibrary.org/bibliography/8408

Readers are respectfully advised that the publication of material in this journal does not imply that the views and opinions expressed therein are shared by the Editor or by the Amateur Entomologists' Society or by any party other than the named author or authors.

Guidelines for Contributors

The Editor welcomes contributions on British Isles Lepidoptera, on non-British Lepidoptera where likely to be of interest to British researchers and on other groups of British Insects for which specialist English language journals do not currently exist. We accept descriptions of new species. Other subject matter may be accepted entirely at the discretion of the Editor, whose decision is final.

Please follow the format in this issue; if in doubt, ask the Editor. We positively encourage the use of colour photographs of insects and their habitats but their inclusion must enhance the text or serve some other useful purpose. We encourage the use of colour in the interpretation of graphs, charts etc. All images must be sent as individual separate files; please send high resolution files – do not reduce file size for ease of e-mailing. Images embedded (pasted into) word processor files cannot be used.

All papers are subject to peer-review and may be returned for changes prior to acceptance. Shorter communications and Notes are normally reviewed by the Editor but may also be sent for external review before acceptance; to reduce both cost and delay required changes to these are usually made by the Editor.

We now issue Pdf files in place of paper reprints. These are sent automatically to the first named author of Papers. Authors of Notes may request a Pdf of their contribution. Abstracts of Papers are published on our website.

Books for review must be sent to the Editor in the first instance. We do not normally accept unsolicited reviews by third parties.

Data Protection Act, 1998

Subscribers' names, address, AES publications subscribed to and, where provided, e-mail addresses and telephone numbers, are stored on a computer database for the sole purpose of administering the publication and distribution of this journal. The information may be accessed by or sent to elected AES council members for AES business purposes, but will be used solely for the purposes of managing AES membership subscriptions and administering the Society. It will not be divulged to any third party without your permission except where the Society is legally obliged to do so. By subscribing to the *Entomologist's Record and Journal of Variation* you agree to these data storage conditions. If you object to us storing these data please let us know.

The Entomologist's record is now printed in full colour, enabling us to accept a wider range of illustrative and interpretative material. This development has been made possible by a generous bequest by the late Andy Callow.

CONTENTS

Compiled by Colin W. Plant & Andrew Smith

1: PEER-REVIEWED PAPERS

B

Boudinotiana puella mediterranea (Gavev, 1984) (Lep.: Geometridae) – new genus and new species for Greece. *Stoyan Beshkov*, 116-118

C

(A) contribution to the microlepidopteran fauna of Cyprus. *Ian Barton*, 157-167

Cydalima perspectalis (Walker, 1859) (Lepidoptera: Pyraloidea: Crambidae: Spilomelinae) – new invasive pest moth in Bulgaria. *Stoyan Beshkov, Stanislav Abadjiev and Desislav Dimitrov*, 18-22

D

Delplanqueia inscriptella (Duponchel, 1836) a sister species of *D. dilutella* (Denis & Schiffermüller, 1775) (Lepidoptera: Pyralidae) resident in Britain. *David Agassiz*, 185-189

Discovery of *Ethmia pyrausta* (Pallas, 1771) (Lep.: Ethmiidae) breeding in Highland Scotland. *Nigel G. J. Richards, Mark R. Young and Keith P. Bland*, 11-17

E

Eight new and some rare for Serbia nocturnal Lepidoptera species collected at light. *Stoyan Beshkov*, 212-227

Golden-rod Pug *Eupithecia virgaureata* Doubleday (Lep: Geometridae) a truly polyphagous species and records of *Eupithecia* species overwintering twice as pupae. *B. P. Henwood*, 89-94

I

(The) immigration of Lepidoptera to the British Isles in 2011. *Sean P. Clancy*, 45-79

M

Microlepidoptera Review of 2014. *J. R. Langmaid and M. R. Young*, 237-264

N

New lepidopteran associations of the mite *Cheletomorpha lepidopterorum* (Shaw) (Acari: Prostigmata: Cheyletidae). *Anne S. Baker and Roy Leverton*, 168-175

A new *Phtheochroa* Stephens, 1829 (Lep.: Tortricidae: Cochylini) from Cyprus. *Ian Barton*, 97-101

Noctua janthe (Borkhausen, 1792) (Lep.: Noctuidae) – new for Montenegro and confirmed for Bulgaria. *Stoyan Beshkov*, 81-84

O

On *Pammene crataegophila* Amsel, 1935 (Tortricidae) from Cyprus, with a description of the female genitalia. *Ian Barton*, 104-108

P

Phyllonorycter pastorella (Zeller, 1846) (Lep.: Gracillariidae) in London: a species new to Britain. *Tim Freed*, 1-10

R

Recent additions to the moth fauna of Hertfordshire. *Colin W. Plant*, 137-149

S

(A) significant range extension of *Erannis declinans* (Staudinger, 1879) in Europe (Lep.: Geometridae). *Stoyan Beshkov*, 271-277
Some new for Serbia and rare Lepidoptera species collected at light in Eastern Serbia. *Stoyan Beshkov*, 127-134

V

Vitula edmandsii (Packard, [1865]) (Lep.: Pyralidae): in County Durham. *T. J. Tams*, 190-192

2: NOTES

A

A response to some criticisms of the 'Selection Theory' of industrial melanism. *J. C. Weir*, 206-211
Acrolepia autumnitella Curtis (Lep.: Glyphipterigidae): New to Northumberland. *T. J. Tams*, 149
(The) antennae of Twin-spotted Quaker *Anorthoa* (= *Orthosia*) *munda* (Lep.: Noctuidae). *J. C. A. Craik*, 119-121
Aphelia unitana (Hb.) and Bilberry Tortrix *Aphelia viburnana* (D. & S.) (Lep.: Tortricidae) found in Gloucestershire. *Guy H. J. Meredith*, 23
Aulagromyza luteoscutellata (de Meijere, 1924) (Dip.: Agromyzidae) and *Leycesteria formosa* (Wall.). *Robert Homan*, 44

B

Barkfly *Blaste quadrimaculata* (Latreille) (Pso.: Psocidae) on Leicestershire churches. *Stephen F. Woodward*, 17
Batesian mimicry in *Anarta myrtila* (L.) (Lep.: Noctuidae)? *J. C. Weir*, 135-136
Bivoltinism in *Epinotia immundana* (Fischer von Röslerstamm) (Lep.: Tortricidae) in the Inner Moray Firth, Scotland. *Nigel G. J. Richards*, 40-41
Blackthorn *Prunus spinosa* L.: a larval foodplant of *Swammerdamia pyrella* (Villers, 1789) (Lep.: Yponomeutidae). *Miss S. D. Beavan and R. J. Heckford*, 126
Bordered Grey *Selidosema brunnearia* (Villiers) (Lep.: Geometridae) at St. Cyrus, Kincardineshire, with a previously unrecorded foodplant in Britain. *Paul Brooks and Roy Leverton*, 267-270
Bristly Ox-tongue *Helminthotheca echioides* may be worth a second glance! *Kevin Royles*, 124-126
Bristly Ox-tongue. *Martin R. Honey*, 198-199
Brown-tails *Euproctis chrysorrhoea* (L.) and Spindle Ermine larvae *Yponomeuta cagnagella* (Hb.) at Loves Farm estate, St Neots, Huntingdonshire. *Barry Dickerson*, 111-114

C

Caradrina clavipalpis infested with *Cheletomorpha lepidopterorum*. *Jonathan Forgham*, 265-266
Clepsis dumicolana (Zeller) (Lep.: Tortricidae) in Buckinghamshire. *Andrew Kershaw*, 283-284
Coleophora pennella ([Denis & Schiffermüller], 1775) (Lep.: Coleophoridae): larvae feeding on Hound's-tongue *Cynoglossum officinale* L. in England. *Miss S. D. Beavan and R. J. Heckford*, 155
Cydia leguminana (Lienig & Zeller, 1846) (Lep.: Tortricidae) - first British record since 1976. *D. V. Manning*, 200

E

Eilema caniola (Hb) (Lep.: Erebidae), Hoary Footman new to Bedfordshire. *Melissa G. Banthorpe*, 94

Epermenia aequidentellus (Hofmann) (Lep.: Epermeniidae) – new for Norfolk. *Brian Jones*, 26-29
Epinotia subocellana (Donovan) (Lep.: Tortricidae) larva using an old gall as a habitation. *Roy Leverton and Mark R. Young*, 110-111

F

(The) Four-spotted Moth *Tyta luctuosa* (D. & S.) (Noctuidae) and the Grizzled Skipper *Pyrgus malvae* (L.) (Hesperiidae) at Werrington Brook Drain, Peterborough, in 2014. *Paul Waring*, 176-179

Further occurrences of *Clepsis dumicolana* (Zeller, 1847) (Lep.: Tortricidae) in Middlesex. *Andrew Culshaw and Rachel Terry*, 150

G

Garden Tiger *Arctia caja* (L.) (Lep.: Arctiidae), a distinctive aberration caught in Shropshire. *Graham Wenman*, 193-194

Gold Spangle *Autographa bractea* (D. & S.) (Lep.: Noctuidae) in Peterborough in 2014. *Paul Waring*, 80

H

Hellinsia osteodactylus (Zeller, 1841) (Lep.: Pterophoridae) larvae feeding on two previously unrecorded Compositae species in Northumberland. *A. J. Fairclough*, 264

Hornet Clearwing *Sesia apiformis* (Cl.) (Lep.: Sesiidae) feeding on willow *Salix*. *David A. Illiff*, 279-280

L

(The) larva aeterna. *Derek Parkinson*, 24-26

(The) larva of Light Brown Apple Moth *Epiphyas postvittana* (Walk.) (Lep.: Tortricidae) feeding on Broad Bean *Vicia faba*. *Barry Dickerson*, 199

Larva of Rosy Marsh moth *Coenophila subrosea* (Stephens, 1829) (Lep.: Noctuidae) found feeding in the wild on *Vaccinium myrtillus*, a previously unrecorded foodplant and on *Andromeda polifolia*. *B. P. Henwood and P. H. Sterling*, 85-87

Larvae of four species of footman moths (Lep.: Erebidae, Arctiinae) found on unusual foodplants. *B. P. Henwood and P. H. Sterling*, 108-110

Larvae of *Pieris brassicae* (L.) and *P. rapae* (L.) in winter (Lep.: Pieridae). *B. P. Henwood*, 114-115

Least Minor *Photedes captiuncula* (Tr.) ssp. *tincta* (Kane, 1895) (Lep.: Noctuidae) in Ireland – the finding of larvae and a previously unrecorded foodplant. *P. H. Sterling, B. P. Henwood and D. Foot*, 37-40

M

Macaria alternata (D. & S.) (Lep.: Geometridae): the first confirmed record of Sharp-angled Peacock in Bedfordshire. *Melissa G. Banthorpe*, 114

Marbled Green *Nyctobrya muralis* (Forster) and Scarce Silver Y *Syngnapha interrogationis* (L.) (Lep.: Noctuidae) in Huntingdonshire. *Barry Dickerson*, 29-30

Meganola abula (D. & S.) (Lep.: Nolidae), Kent Black Arches new to Bedfordshire (VC30). *Melissa G. Banthorpe*, 103

Mercury vapour light bulbs – past, present and future. *J. C. A. Craik*, 201-203

(The) moths of Fox Covert, Werrington, Peterborough. *Paul Waring*, 228-231

N

Northern Dart *Xestia alpicola* (Zett.) ssp. *alpina* (H. & W.) (Lep.: Noctuidae): a failed rearing attempt. *Roy Leverton*, 32-37

Nothochrysa fulviceps (Stephens) (Neur.: Chrysopidae). An unexpected flurry of records in 2015. *Colin W. Plant*, 205-206

O

Observations on the larva of *Incurvaria pectinea* Haworth (Lep.: Incurvariidae). *Miss S. D. Beavan and R. J. Heckford*, 95-96

P

Possible trivoltinism in *Ectoedemia septembrella* (Stainton) (Lep.: Nepticulidae). *Rob Edmunds*, 203-204

Psallus salicis (Kirschbaum) (Hem.: Miridae) new to Oxfordshire. *Rob Ryan*, 31-32

R

Recent records of the Festoon *Apoda limacodes* (Hufnagel) (Lep.: Limacodidae) on Salisbury Plain, Wiltshire. *M. H. Smith*, 101-103

Record of a larva of the Scarce Bordered Straw *Helicoverpa armigera* (Hb.) (Lep.: Noctuidae) in the wild. *Barry Henwood*, 115

Record of a larva of the Scarce Bordered Straw *Helicoverpa armigera* (Hb.) (Lep.: Noctuidae) in the wild. *Barry Henwood*, 134

Rhipidothrips brunneus Williams, 1913 (Thysanoptera: Aeolothripidae) in north Kent. *Laurence Clemons*, 30-31

Riband Wave *Idaea aversata* (L.) (Lep.: Geometridae) banded form frequency in Scotland. *Roy Leverton*, 195-197

S

Scythris empetrella Karsholt & Nielsen (Lep.: Scythrididae): larvae in October 2015. *R. J. Heckford*, 282-283

Stalis lutaria L. (Megaloptera: Sialidae) larvae recorded in a pitfall trap. *Kevin Royles*, 176

Slender-striped Rufous *Coenocalpe lapidata* (Hb) (Lep.: Geometridae) in the Southern Highlands of Scotland. *Nick A. Littlewood*, 41-43

Strange Copulation: Meadow Brown and Red Admiral. *Harry E. Clarke*, 197-198

Systematic predation of Emperor Moth *Saturnia pavonia* (L.) (Lep.: Saturniidae) cocoons. *Roy Leverton*, 280-281

T

Thalictrum delavayi (Chinese meadow-rue) – a new host plant for *Phytomyza minuscula* Goureau, 1851 (Dip.: Agromyzidae). *Rob Edmunds*, 278

The antennae of Twin-spotted Quaker *Anorthoa* (= *Orthosia*) *munda* (Lep.: Noctuidae). *J. C. A. Craik*, 119-121

The Elephant and the Wasp! *Dug Heath*, 194

The Four-spotted Moth *Tyta luctuosa* (D. & S.) (Noctuidae) and the Grizzled Skipper *Pyrgus malvae* (L.) (Hesperiidae) at Werrington Brook Drain, Peterborough, in 2014. *Paul Waring*, 176-179

The larva aeterna. *Derek Parkinson*, 24-26

The larva of Light Brown Apple Moth *Epiphyas postvittana* (Walk.) (Lep.: Tortricidae) feeding on Broad Bean *Vicia faba*. *Barry Dickerson*, 199

The moths of Fox Covert, Werrington, Peterborough. *Paul Waring*, 228-231

The use of a flight interception trap to record Lepidoptera. *Kevin Royles*, 122-123

V

Viper's-bugloss *Echium vulgare* and the Narrow-bordered Five-spot Burnet moth *Zygaena lonicerae* (Scheven). *Kevin Royles*, 151-155

3: SUBSCRIBERS' NOTICES AND ANNOUNCEMENTS

AES News, 87

Appeal for contributions, 103

Graham Howarth, 136

RHH Bloomer Medal. *Editor*, 156

Butterflies of Hertfordshire and Middlesex. *Andrew Wood*, 88

Records of Pyraloidea (Crambidae & Pyralidae) from Bulgaria. *Colin W. Plant*, 88

4: BOOK REVIEWS

The smaller moths of Shropshire. Their status, distribution and ecology, 183-184

Moths of Europe. Vol. 4: Pyralids 2, 231-233

The Moths and Butterflies of Great Britain and Ireland Volume 5 (parts I and II), 234-236

5: OBITUARIES

Torben Bjørn LARSEN, 180-182

6: ADDENDA & CORRIGENDA

Corrigenda, 284

7: CONTRIBUTORS

Page number entries **in bold** refer to peer-reviewed papers; entries in ordinary type refer to Notes and other communications that have been refereed internally by the Editor and his colleagues. Where an author is not the first named of multiple authors, page number entry is printed in *italic type*.

Abadjiev, Stanislav,**18-22**
Agassiz, David,**185-189**
Baker, Anne S.,**168-175**
Banthorpe, Melissa G.,94, 103, 114
Barton, Ian,**104-108, 157-167**
Beavan, S. D.,95-96, 126, 155
Beshkov, Stoyan,**18-22, 81-84, 116-118,**
127-134, 212-227, 271-277
Bland, Keith P.,**11-17**
Brooks, Paul,267-270
Clancy, Sean P.,**45-79**
Clarke, Harry E.,197-198
Clemons, Laurence,30-31
Craik, J. C. A.,119-121, 201-203
Culshaw, Andrew,150
Dickerson, Barry,29-30, 111-114, 199
Dimitrov, Desislav,**18-22**
Edmunds, Rob,203-204, 278

Fairclough, A. J.,264
Foot, D.,37-40
Forgham, Jonathan,265-266
Freed, Tim,**1-10**
Heath, Dug,194
Heckford, R. J., ..95-96, 126, 155, 282-283
Henwood, B. P.,37-40, 85-87, **89-94,**
108-110, 114-115, 115, 134,
Homan, Robert,44
Honey, Martin R.,198-199
Ian, Barton,**97-101**
Iliff, David A.,279-280
Jones, Brian,26-29
Kershaw, Andrew,283-284
Langmaid J. R.,**237-264**
Leverton, Roy,32-37, 110-111, **168-175,**
195-197, 267-270, 280-281
Littlewood, Nick A.,41-43

Manning, D. V.,	200
Meredith, Guy H. J. ,	23
Parkinson, Derek ,	24-26
Plant, Colin W. ,	137-149 , 205-206
Richards, Nigel G. J.,	11-17 , 40-41
Royles, Kevin,	122-123, 124-126, 151-155, 176
Ryan, Rob,	31-32
Smith, M. H.,	101-103

Sterling P. H.	37-40, 85-87, <i>108-110</i>
Tams, T. J.,	149, 190-192
Terry, Rachel	<i>150</i>
Waring, Paul	80, 176-179, 228-231
Weir, J. C.,	135-136, 206-211
Wenman, Graham	193-194
Woodward, Stephen F.,	17
Young, M. R.,	<i>11-17, 110-111</i> , 237-264

SPECIAL INDEX

Compiled by Catherine Wellings & Graham Wenman

Newly described taxa are indicated in **bold** type.

Taxa new to, or newly recognised in, the British Isles and mentioned first in this volume are denoted by an asterisk.

	Page		Page
LEPIDOPTERA			
<i>abietana</i> (Hübner), <i>Acleris</i>	238, 256	<i>agrimoniae</i> (Frey.), <i>Ectoedemia</i>	141
<i>abietella</i> (D. & S.), <i>Dioryctria</i>	262	<i>albicosta</i> (Haworth), <i>Coleophora</i>	251
<i>abscisana</i> (Doubleday), <i>Lobesia</i>	257	<i>albidella</i> (Nyl.), <i>Elachista</i>	253
<i>absinthiata</i> (Clerck), <i>Eupithecia</i>	93	<i>albifasciella</i> (Hein.), <i>Ectoedemia</i>	241
<i>absoluta</i> (Meyrick), <i>Tuta</i>	49, 77, 250	<i>albinaculea</i> (Haworth), <i>Denisia</i>	247
<i>abula</i> (D. & S.), <i>Meganola</i>	103	<i>albipuncta</i> (D. & S.), <i>Mythimna</i>	60
<i>aceriana</i> (Dup.), <i>Gypsonoma</i>	259	<i>albiramella</i> (Mann), <i>Ypsolopha</i>	160, 164
<i>aceris</i> (L.), <i>Acronicta</i>	230	<i>albstria</i> (Haworth), <i>Argyresthia</i>	247
<i>acetosae</i> (Stainton), <i>Enteucha</i>	240	<i>albuginana</i> (Guen.), <i>Pammene</i>	261
<i>acroxantha</i> (Meyrick), <i>Tachystola</i>	143	<i>albula</i> (D. & S.), <i>Meganola</i>	140
<i>acuminatana</i> (Lien. & Zeller), <i>Dichrorampha</i>	260	<i>algae</i> (Fabricius), <i>Cryphia</i>	62, 219, 222
<i>acuminatella</i> (Sirc.), <i>Scrobipalpa</i>	250	<i>algira</i> (L.), <i>Dysgonia</i>	67
<i>acuta</i> (Walk.), <i>Chrysodeixis</i>	46, 65	<i>aliena</i> Baldizzzone, <i>Coleophora</i>	161
<i>acutellus</i> (Evers.), <i>Scleroconia</i>	50, 262	<i>alimana</i> (Ragonot), <i>Gynnidomorpha</i>	257
<i>adjunctella</i> Hodgk., <i>Coleophora</i>	251	<i>alpella</i> (D. & S.), <i>Ypsolopha</i>	246
<i>adornatella</i> (Treitschke), <i>Delplanqueia</i>	185-189	<i>alpicola</i> (Zetterstedt), <i>Xestia</i>	32-37
<i>adscitella</i> (Stainton), <i>Elachista</i>	252	<i>alpina</i> ssp. of <i>alpicola</i> (Zetterstedt), <i>Xestia</i>	32-37
<i>adspersella</i> (Benander), <i>Coleophora</i>	252	<i>alpinana</i> (Treitschke), <i>Dichrorampha</i>	260
<i>advenella</i> (Zincken), <i>Acrobasis</i>	262	<i>alpinella</i> Stainton, <i>Elachista</i>	252
<i>aegeria</i> (L.), <i>Pararge</i>	122, 155	<i>alpium</i> (Osbeck), <i>Moma</i>	129
<i>aeneana</i> (Hübner), <i>Commophila</i>	257	<i>alsinella</i> (Zeller), <i>Caryocolum</i>	250
<i>aequidentellus</i> (Hofm.), <i>Epermenia</i>	26-29, 255	<i>alternaria</i> (Hübner), <i>Semiothisa</i> , <i>Macaria</i>	114
<i>aeriferanus</i> (H-S.), <i>Ptycholomoides</i>	255	<i>alternata</i> (D. & S.), <i>Macaria</i>	114
<i>aeruginea</i> (Hübner), <i>Dichonia</i>	130, 275	<i>amasina</i> (Draudt), <i>Nyctobrya</i>	222
<i>aerugula</i> (Hübner), <i>Nola</i>	59	<i>ambigua</i> (D. & S.), <i>Hoplodrina</i>	177
<i>affinis</i> (Haworth), <i>Bryotropha</i>	249	<i>ambiguella</i> (Hübner), <i>Eupoecilia</i>	49
<i>affinis</i> (L.), <i>Cosmia</i>	225	<i>amplana</i> (Hübner), <i>Cydia</i>	49, 144, 260
<i>agathina</i> (Dup.), <i>Xestia</i>	146	<i>amygdali</i> (Klimesch), <i>Stigmella</i>	159
<i>agestis</i> (D. & S.), <i>Aricia</i>	124	<i>anachoreta</i> (D. & S.), <i>Clostera</i>	57
<i>agnotana</i> Rebel, <i>Pammene</i>	261	<i>anatolica</i> (Hering), <i>Egira</i>	127, 130, 133
		<i>anceps</i> (Goeze), <i>Peridea</i>	129
		<i>ancipitella</i> (La Harpe), <i>Scoparia</i>	263

<i>angustella</i> (Zeller), <i>Nephoterix</i>	53
<i>anthyllidella</i> (Hübner), <i>Aproaerema</i>	249
<i>antiopa</i> (L.), <i>Nymphalis</i>	54
<i>Aphelia</i>	23
<i>apiformis</i> (Clerck), <i>Sesia</i>	279-280
<i>apparella</i> (H-S), <i>Phyllonorycter</i>	7
<i>arceuthina</i> Zeller, <i>Argyresthia</i>	246
<i>argentella</i> (Clerck), <i>Elachista</i>	252
<i>argyrana</i> (Hübner), <i>Pammene</i>	261
<i>aridus</i> (Zeller), <i>Stenoptilia</i>	165
<i>armigera</i> (Hübner), <i>Helicoverpa</i>	75,
	115, 134
<i>artemiscollella</i> (Scott), <i>Coleophora</i>	252
<i>arundinetella</i> (Boyd), <i>Monochroa</i>	250
<i>asiatica</i> (Krul.), <i>Nycteola</i>	76
<i>assectella</i> (Zeller), <i>Acrolepiopsis</i>	246
<i>asteris</i> (Mühlig), <i>Coleophora</i>	252
<i>astrantiae</i> (Hein.), <i>Agonopterix</i>	248
<i>atalanta</i> (L.), <i>Vanessa</i> 70, 122, 154, 197-198	
<i>atricomella</i> Stainton, <i>Elachista</i>	252
<i>atriplicis</i> (L.), <i>Trachea</i>	62
<i>atropos</i> (L.), <i>Acherontia</i>	56, 76
<i>atropunctana</i> (Zetterstedt), <i>Hedya</i>	257
<i>augur</i> (Fabricius), <i>Graphiphora</i> ...170, 171,	
	173, 266
<i>aurata</i> (Scopoli), <i>Pyrausta</i>	154
<i>auriciliella</i> (Joannis), <i>Bohemannia</i>	241
<i>aurita</i> (Raz.), <i>Pammene</i>	238, 261
<i>aurofasciana</i> (Haworth), <i>Celypha</i>	257
<i>autumnitella</i> Curtis, <i>Acrolepia</i>	149
<i>avensata</i> (L.), <i>Idaea</i>	195-197
<i>badia</i> (Hodges), <i>Anatrachytis</i>	49
<i>badiipennella</i> (Dup.), <i>Coleophora</i>	250
<i>baja</i> (D. & S.), <i>Xestia</i>	168, 169, 172, 266
<i>bajaria</i> (ID. & S.), <i>Agriopis</i>	128, 275
<i>bankiana</i> (Fabricius), <i>Deltote</i>	64
<i>basaltinella</i> (Zeller), <i>Bryotropha</i>	249
<i>basifasciella</i> Ragionot, <i>Tinea</i>	159
<i>basimaculella</i> Mann, <i>Coleophora</i>	161
<i>bennetii</i> (Curtis), <i>Agdistis</i>	254
<i>berbera svenssoni</i> (Fletcher),	
<i>Amphipyra</i>	222
<i>beschkovii</i> Ganev, <i>Agriopis</i>	271
<i>betulae</i> (Goeze), <i>Ortholepis</i>	53
<i>betularia</i> (L.), <i>Biston</i>	206-211
<i>betulella</i> (Hein.), <i>Coleophora</i>	251
<i>betuletana</i> (Haworth), <i>Apotomis</i>	257
<i>betulicola</i> (Her.), <i>Caloptilia</i>	243
<i>betulicola</i> (Stainton), <i>Stigmella</i>	240
<i>betulinella</i> (Paykull), <i>Nemaxera</i>	242
<i>biatomella</i> (Stainton), <i>Elachista</i>	160
<i>bicostella</i> (Clerck), <i>Pleurota</i>	248

<i>bicuris</i> (Hufnagel), <i>Hadena</i>	172
<i>bidentata</i> (Clerck), <i>Odontopera</i>	209
<i>bifasciana</i> (Haworth), <i>Piniphila</i>	257
<i>bifasciana</i> (Hübner), <i>Spatalists</i>	256
<i>bigramma</i> (Hübner), <i>Agrotis</i>	45, 59
<i>bilineata</i> (D. & S.), <i>Campotogramma</i>	123
<i>bilunana</i> (Haworth), <i>Empinotia</i>	259
<i>binderella</i> (Koll.), <i>Coleophora</i>	251
<i>biplaga</i> (Walker), <i>Earias</i>	8
<i>bipunctidactyla</i> (Scopoli), <i>Stenoptilia</i>	254
<i>bistriatella</i> (Hulst), <i>Apomyelois</i>	53
<i>bistriga</i> (Haworth), <i>Cryptoblabes</i>	261
<i>biviella</i> (Zeller), <i>Vitula</i>	262
<i>blancardella</i> (Fabricius), <i>Phyllonorycter</i>	244
<i>blanda</i> (D. & S.), <i>Hoplodrina</i>	224
<i>blandella</i> (Fabricius), <i>Brachmia</i>	249
<i>boeticus</i> (L.), <i>Lampides</i>	54, 76
<i>bractea</i> (D. & S.), <i>Autographa</i>	80
<i>bradleyi</i> Riedl, <i>Mompha</i>	253
<i>brassicae</i> (L.), <i>Pieris</i>	114-115, 123,
	124, 154
<i>brockeella</i> (Hübner), <i>Argyresthia</i>	246
<i>brongniardella</i> (Fabricius),	
<i>Acrocercops</i>	159, 244
<i>brunnearia</i> (Villiers), <i>Selidosema</i>	267-270
<i>brunneata</i> (Thunb.), <i>Itame</i>	45, 71-72, 76
<i>buettneri</i> (Her.), <i>Sedina</i>	62
<i>buoliana</i> (ID. & S.), <i>Rhyacionia</i>	260
<i>caecigena</i> (Kupido), <i>Saturnia</i>	129
<i>caeruleocephala</i> (L.), <i>Diloba</i>	275
<i>caesaris</i> Gozmány, <i>Pyroderces</i>	162
<i>caesiella</i> (Hübner), <i>Swammerdamia</i>	245
<i>caespitiella</i> Zeller, <i>Coleophora</i>	251
<i>cagnagella</i> (Hübner), <i>Yponomeuta</i>	111, 112
<i>cailino</i> (Lefebvre), <i>Drasteria</i>	221
<i>caja</i> (L.), <i>Arctia</i>	193-194
<i>caledoniana</i> (Stephens), <i>Acleris</i>	256
<i>calthella</i> (Linn.), <i>Micropterix</i>	239
<i>cambridgei</i> (Zeller), <i>Euchromius</i> ...166, 263	
<i>campoliliana</i> (ID. & S.), <i>Eucosma</i>	259
<i>canapennella</i> (Hübner), <i>Elachista</i>	253
<i>canescens</i> (Staudinger), <i>Scythris</i> ...160, 164	
<i>caniola</i> (Hübner), <i>Eilema</i>	58, 94, 145
<i>capnospila</i> (Meyrick), <i>Aethes</i>	162, 165
<i>capparidana</i> Zeller, <i>Selania</i>	165
<i>captiuncula</i> (Treitschke), <i>Photedes</i>	37-40
<i>cararia</i> (Hübner), <i>Stegania</i>	76, 206
<i>carbonaria</i> f. <i>betularia</i> (L.), <i>Biston</i>	206-211
<i>cardui</i> (L.), <i>Vanessa</i>	70, 155
<i>carphodactyla</i> (Hübner), <i>Hellinsia</i>	254
<i>castrensis</i> (L.), <i>Malacosoma</i>	221
<i>cataluanalis</i> (Dup.), <i>Antigastra</i>	46, 51

<i>catax</i> (L.), <i>Eriogaster</i>	129
<i>catharticella</i> (Stainton), <i>Stigmella</i>	240
<i>celerio</i> (L.), <i>Hippotion</i>	57
<i>centralasiae</i> Obratzsov, <i>Cydia</i>	164
<i>cerasana</i> (Hübner), <i>Pandemis</i>	255
<i>cerasi</i> (Fabricius), <i>Monima</i>	119-121
<i>cerasi</i> (Fabricius), <i>Orthosia</i> = <i>cerasi</i> (Fabricius), <i>Monima</i>	119-121
<i>cerasicolella</i> (H.-S.), <i>Phyllonorycter</i>	244
<i>chaerophyllella</i> (Hübner), <i>Epermenia</i>	255
<i>chalcites</i> (Esper), <i>Chrysoideixis</i>	65
<i>chalciopepla</i> (Walsingham), <i>Pseudopostega</i>	159, 164
<i>chenopodiata</i> (L.), <i>Scotopteryx</i>	267
<i>chiridota</i> (Grote), <i>Lacosoma</i>	77
<i>chrysanthemella</i> (Rebel), <i>Bucculatrix</i> ..	142
<i>chrysippus</i> (L.), <i>Danaus</i>	55
<i>chrysitis</i> (L.), <i>Diachrysa</i>	147
<i>chrysorrhoea</i> (L.), <i>Euproctis</i>	111-114
<i>cidadella</i> (Zeller), <i>Scythris</i>	264
<i>cicatricalis</i> (Treitschke), <i>Nola</i>	129
<i>cidarella</i> Zeller, <i>Bucculatrix</i>	243
<i>ciliella</i> (Stainton), <i>Agonopteryx</i>	248
<i>cilium</i> (Guen.), <i>Spodoptera</i>	46, 63
<i>cinerea</i> (ID. & S.), <i>Agrotis</i>	141
<i>cinereana</i> (Haworth), <i>Epinotia</i>	259
<i>cinerosella</i> (Zeller), <i>Euzophera</i>	262
<i>cinnamomeana</i> (Treitschke), <i>Pandemis</i>	138, 255
<i>cirsiana</i> (Zeller), <i>Epiblema</i>	259
<i>citrano</i> (L.) <i>Tiliacea</i>	130
<i>citrella</i> Stainton, <i>Phyllocnistis</i>	245
<i>claustrella</i> (Bruand), <i>Bacotia</i>	242
<i>clavipalpis</i> (Scopoli), <i>Caradrina</i>	168, 170-171, 173, 265-266
<i>cloacella</i> (Haworth), <i>Nemapogon</i>	242
<i>clypeiferella</i> Hofm., <i>Coleophora</i>	252
<i>cnicana</i> (Westw.), <i>Aethes</i>	257
<i>colquhounana</i> f. <i>penziana</i> (Thunb.), <i>Eana</i>	256
<i>comariana</i> (Lien. & Zeller), <i>Acleris</i>	138
<i>comes</i> (Hübner), <i>Noctua</i> 168, 172, 173, 266	
<i>communimacula</i> (ID. & S.), <i>Calymma</i> ..	221
<i>comparella</i> (Dup.), <i>Phyllonorycter</i> ...	7, 245
<i>complana</i> (L.), <i>Eilema</i>	108, 110
<i>compunctella</i> H.-S., <i>Swammerdamia</i> ..	245
<i>confusa</i> (Stephens), <i>Macdunnoughia</i> ..	66
<i>confusella</i> (Wood), <i>Stigmella</i>	240
<i>congelatella</i> (Clerck), <i>Exapate</i>	256
<i>conicolella</i> (Constant), <i>Assara</i>	165, 166
<i>coniferana</i> (Ratz.), <i>Cydia</i>	260
<i>conjugella</i> Zeller, <i>Argyresthia</i>	247

<i>connexela</i> (Zeller), <i>Phyllonorycter</i>	6, 7
<i>consortella</i> (Stainton), <i>Elachista</i> ...	160, 253
<i>conspersana</i> (Dougl.), <i>Cnephasia</i>	256
<i>conspersaria</i> (ID. & S.), <i>Dyscia</i>	129
<i>conspicillaris</i> (L.), <i>Egira</i>	130, 133
<i>continuella</i> (Stainton), <i>Stigmella</i>	241
<i>conturbatella</i> (Hübner), <i>Mompha</i>	253
<i>convolvuli</i> (L.), <i>Agrius</i>	72
<i>conwagana</i> (Fabricius), <i>Pseudargyrotoza</i>	257
<i>coronata</i> (Hufnagel), <i>Anania</i>	262
<i>coryli</i> (Nic.), <i>Phyllonorycter</i>	244
<i>corylifoliella</i> (Hübner), <i>Phyllonorycter</i> ..	159
<i>cosmophorana</i> (Treitschke), <i>Cydia</i>	260
<i>craccae</i> (D. & S.), <i>Lygephila</i>	77
<i>crassa</i> (Hübner), <i>Agrotis</i>	146
<i>crassica</i> (Fabricius), <i>Hypena</i>	67
<i>crassicervicella</i> (Chrétien), <i>Cosmopteryx</i>	162
<i>crassiuscula</i> (H.-S.), <i>Scythris</i>	282-283
<i>crataegella</i> (Klim), <i>Stigmella</i>	240
<i>crataegella</i> (L.), <i>Scythropia</i>	247
<i>crataegi</i> (L.), <i>Trichiura</i>	221
<i>crataegophila</i> Amsel, <i>Pammene</i> ...	104-107
<i>crenana</i> (Hübner), <i>Epinotia</i>	259
<i>crenata</i> (Esper), <i>Gluphisia</i>	45, 57
<i>cribraria</i> (L.), <i>Coscinia</i>	45, 58
<i>crocealis</i> (Hübner), <i>Anania</i>	262
<i>crocealis</i> (Hübner), <i>Ebulea</i>	140
<i>croceus</i> (Geoff.), <i>Colias</i>	69-70
<i>crocicapitella</i> (Clemens), <i>Monopis</i>	243
<i>croesella</i> (Scopoli), <i>Adela</i>	142
<i>cruda</i> (D. & S.), <i>Monima</i>	119-121
<i>cruda</i> (D. & S.), <i>Orthosia</i> = <i>cruda</i> (D. & S.), <i>Monima</i>	119-121
<i>culcatala</i> (Hufnagel), <i>Catarhoe</i>	215
<i>culcipennella</i> (Hübner), <i>Caloptilia</i>	243
<i>culullina</i> (ID. & S.), <i>Ptilodon</i>	230
<i>culmella</i> (L.), <i>Chrysoteuchia</i>	154
<i>culta</i> (ID. & S.), <i>Lamprosticta</i>	222
<i>cunea</i> (Drury), <i>Hyphantria</i>	145
<i>cuprella</i> (ID. & S.), <i>Adela</i>	242
<i>cupressata</i> (Geyer), <i>Thera</i>	56
<i>cupressella</i> Wals., <i>Argyresthia</i>	246, 264
<i>curvatula</i> (Borkh.), <i>Drepana</i>	45, 55
<i>curvipunctosa</i> (Haworth), <i>Agonopteryx</i> ..	160
<i>cyathigerum</i> (Charpentier), <i>Enallagma</i> ..	125
cypriana Barton, Phitheochroa	97-101
<i>cytisella</i> (Curtis), <i>Monochroa</i>	249
<i>dalmatina</i> Wagner, <i>Nychiodes</i>	215
<i>dealbana</i> (Fröhl.), <i>Gypsonoma</i>	259
<i>deauratella</i> (H.-S.), <i>Oegoconia</i>	162

<i>deauratella</i> Lien. & Zeller,	
<i>Coleophora</i>	251
<i>decentella</i> (H.-S.), <i>Ectoedemia</i>	241
<i>decepiens</i> Walsingham, <i>Phtheochroa</i>	97
<i>declinans</i> (Staudinger), <i>Erannis</i>	271-277
<i>degeneraria</i> (Hübner), <i>Idaea</i>	56
<i>delunella</i> (Stainton), <i>Eudonia</i>	50, 263
<i>denticulella</i> (Thunb.), <i>Callisto</i>	244
<i>depuncta</i> (L.), <i>Eugnorisma</i>	227
<i>despicata</i> (Scopoli), <i>Pyrausta</i>	262
<i>devoniella</i> (Stainton), <i>Parornix</i>	244
<i>dilectella</i> Zeller, <i>Argyresthia</i>	264
<i>dilucidella</i> (Dup.), <i>Isauria</i>	166
<i>dilutella</i> (D. & S.), <i>Delplanqueia</i>	185-189
<i>diminutana</i> (Haworth), <i>Ancyclus</i>	139,
	238, 258
<i>dispar</i> (L.), <i>Lymantria</i>	58
<i>dodecella</i> (L.), <i>Exoteleia</i>	250
<i>dodonaea</i> (Stainton), <i>Tischeria</i>	242
<i>doдрantaria</i> (Razowski),	
<i>Phtheochroa</i>	97, 100
<i>domestica</i> (Haworth), <i>Bryotropha</i>	249
<i>dominula</i> (L.), <i>Callimorpha</i>	102, 146
<i>dorsilineella</i> (Amsel), <i>Dextellia</i>	159, 164
<i>drenowskii</i> (Rebel), <i>Hadena</i>	212-214,
	225, 226
<i>dubitana</i> (Hübner), <i>Cochylis</i>	257
<i>dumerilii</i> (Dup.), <i>Luperina</i>	76
<i>dumicolana</i> (Zeller), <i>Clepsis</i>	150, 238,
	256, 283-284
<i>duplicella</i> (Goeze), <i>Narycia</i>	242
<i>edmandsii</i> (Packard), <i>Vitula</i>	190-192
<i>effractella</i> Zeller, <i>Eccopisa</i>	8
<i>electa</i> (View.), <i>Catocala</i>	45, 66, 76
<i>elinguaria</i> (L.), <i>Crocallis</i>	215
<i>elpenor</i> (L.), <i>Deilephila</i>	194
<i>emortualis</i> (D. & S.), <i>Trisateles</i>	67
<i>empetrella</i> Karsholt & Nielsen,	
<i>Scythris</i>	282-283
<i>Epimecia</i>	212
<i>Epirrita</i>	27
<i>ergasima</i> (Meyrick), <i>Scrobipalpa</i>	162
<i>ericinella</i> (Zeller), <i>Aristotelia</i>	249
<i>erythrocephala</i> (D. & S.), <i>Conistra</i>	46,
	61-62
<i>etruscaria</i> (Zeller), <i>Phaiogramma</i>	213
<i>euphorbiae</i> (L.), <i>Hyles</i>	56
<i>exclamationis</i> (L.), <i>Agrotis</i>	177
<i>exigua</i> (Hübner), <i>Spodoptera</i>	74-75, 206
<i>exsiccata</i> (Led.), <i>Tathorhynchus</i>	45, 67
<i>extimalis</i> (Scopoli), <i>Evergestis</i>	50, 238, 263
<i>extrema</i> (Hübner), <i>Chortodes</i>	62
<i>fabriciana</i> (L.), <i>Anthophila</i>	124
<i>fagiglandana</i> (Zeller), <i>Cydia</i>	260
<i>agivora</i> (Frey), <i>Parornix</i>	244
<i>fainae</i> ssp. of <i>pastorella</i> (Zeller),	
<i>Phyllonorycter</i>	7
<i>fallax</i> (Stdgr.), <i>Elegia</i>	45, 53
<i>falsella</i> ((D. & S.)), <i>Catoptria</i>	263
<i>fasciana</i> (L.), <i>Pammene</i>	261
<i>fasciella</i> (Fabricius), <i>Nemophora</i>	199
<i>faunus</i> (Turati), <i>Ochlodes</i>	154
<i>ferchaultella</i> (Stephens), <i>Luffia</i>	24-26
<i>ferrugalis</i> (Hübner), <i>Udea</i>	27, 67, 68, 262
<i>ferrugana</i> (D. & S.), <i>Acleris</i>	256
<i>festaliella</i> (Hübner), <i>Schreckensteinia</i>	254
<i>festivana</i> (Hübner), <i>Epinotia</i>	162
<i>ficulnea</i> Purplesis & Krasilnikova,	
<i>Stigmella</i>	159, 163
<i>filicivora</i> (Meyrick), <i>Psychoides</i>	142, 243
<i>filipendulae</i> (L.), <i>Zygaena</i>	151, 154
<i>filipendulae</i> (Wocke), <i>Stigmella</i>	138, 241
<i>fimbrialis</i> (Scopoli), <i>Thalera</i>	171
<i>fimbriata</i> (Schreber), <i>Noctua</i>	212
<i>finitimella</i> (Zeller), <i>Parornix</i>	244
<i>flammea</i> (Curtis), <i>Mythimna</i>	60
<i>flammea</i> (Esper), <i>Trigonophora</i>	61
<i>flammeolaria</i> (Hufnagel), <i>Hydrelia</i>	215
<i>flavalis</i> (D. & S.), <i>Mecyna</i>	262
<i>flavella</i> Chrétien, <i>Tortilia</i>	161, 163
<i>flavescentella</i> Haworth, <i>Tinea</i>	243
<i>flavipennella</i> (Dup.), <i>Coleophora</i>	250
<i>flavirena</i> Guenée, <i>Caradrina</i>	130
<i>florella</i> (Mann), <i>Asalebria</i>	166
<i>fluctuata</i> (L.), <i>Xanthorhoe</i>	171
<i>fluxa</i> (Hübner), <i>Photedes</i>	230
<i>foenella</i> (L.), <i>Epiblema</i>	259
<i>forcipula</i> (D. & S.), <i>Dichagyris</i>	225
<i>forficulis</i> (L.), <i>Evergestis</i>	263
<i>formosa</i> Rogenhofer, <i>Cucullia</i>	213, 219, 222
<i>formosana</i> (Fröhl.), <i>Lozotaeniodes</i>	256
<i>formosana</i> (Scopoli), <i>Enarmonia</i>	258
<i>forsterana</i> (Fabricius), <i>Lozotaenia</i>	255
<i>forsterella</i> (Fabricius), <i>Glyphipterix</i>	246
<i>fovealis</i> (Zeller), <i>Duponchella</i>	51, 263
<i>francillana</i> (Fabricius), <i>Aethes</i>	138
<i>frangitella</i> (Goeze), <i>Bucculatrix</i>	138
<i>fraternana</i> (Haworth), <i>Epinotia</i>	144
<i>fraxinella</i> (Bjerkander), <i>Prays</i>	247
<i>fraxini</i> (L.), <i>Catocala</i>	66
<i>freyerella</i> (Hübner), <i>Elachista</i>	253
<i>frischella</i> (L.), <i>Coleophora</i>	251
<i>frustrata</i> (Treitschke), <i>Euphyia</i>	215
<i>fuliginaria</i> (L.), <i>Parascotia</i>	67

<i>fulvalis</i> (Hübner), <i>Udea</i>	262
<i>fulviguttella</i> (Zeller), <i>Phaulernis</i>	255
<i>funebrana</i> (Treit), <i>Grapholita</i>	260
<i>funesta</i> (Esper), <i>Aedia</i>	206
<i>furcifera</i> (Hufnagel), <i>Lithophane</i>	45, 60
<i>furficella</i> (Scopoli), <i>Harpella</i>	48
<i>furfurana</i> (Haworth), <i>Bactra</i>	258
<i>fuscalis</i> (D. & S.), <i>Anania</i>	140, 262
<i>fuscatella</i> (Tengst.), <i>Lampronia</i>	242
<i>fuscescens</i> (Haworth), <i>Borkhausenia</i>	248
<i>fuscocuprella</i> H.-S., <i>Coleophora</i>	250
<i>galathea</i> (L.), <i>Melanargia</i>	154
<i>galbanella</i> (Zeller), <i>Bryotropha</i>	249
<i>gallii</i> (Rott.), <i>Hyles</i>	56-57
<i>gamma</i> (L.), <i>Autographa</i>	67, 76, 114-115, 123, 124
<i>geminana</i> (Don.), <i>Ancylis</i>	258
<i>geniculella</i> (Ragonot), <i>Phyllonorycter</i> ..	245
<i>gentianaecana</i> (Hübner), <i>Endothenia</i>	258
<i>germana</i> (Hübner), <i>Pammene</i>	261
<i>gerningana</i> (D. & S.), <i>Philedone</i>	255
<i>giganteana</i> (Peyer), <i>Pammene</i>	261
<i>gilvago</i> (D. & S.), <i>Xanthia</i>	62
<i>gilvaria</i> (D. & S.), <i>Aspilates</i>	215
<i>gilvata</i> (Fabricius), <i>Uresiphita</i>	46, 50
<i>glaucolella</i> Wood, <i>Coleophora</i>	251
<i>glaucinalis</i> (L.), <i>Hypsopygia</i>	262
<i>glaucinella</i> Zeller, <i>Argyresthia</i>	247
<i>glutinosa</i> (Stainton), <i>Stigmella</i>	158, 240
<i>glyphica</i> (L.), <i>Euclidia</i>	154
<i>gonodactyla</i> (D. & S.), <i>Platyptilia</i>	254
<i>gothica</i> (L.), <i>Orthosia</i> = <i>gothica</i> (L.), <i>Semiophora</i>	119-121
<i>gothica</i> (L.), <i>Semiophora</i>	119-121
<i>gracilis</i> (D. & S.), <i>Cororthosia</i>	119-121
<i>gracilis</i> (D. & S.), <i>Orthosia</i> = <i>gracilis</i> (D. & S.), <i>Cororthosia</i>	119-121
<i>gracilis</i> Lempke ssp. of <i>putnami</i> Lempke, <i>Plusia</i>	168, 169, 172, 266
<i>grandaevana</i> (Lien. & Zeller), <i>Epiblema</i> ..	49
<i>griseana</i> (Hübner), <i>Zeiraphera</i>	259
<i>grisella</i> (Fabricius), <i>Achroia</i>	261
<i>griseola</i> (Hübner), <i>Eilema</i>	109-110
<i>grotiana</i> (Fabricius), <i>Epagoge</i>	255
<i>gryphipennella</i> (Hübner), <i>Coleophora</i> ..	250
<i>hades</i> Gozmany, <i>Homaloxestis</i>	161, 165
<i>hamana</i> (L.), <i>Agapeta</i>	122, 257
<i>hannoverella</i> (Glitz), <i>Ectoedemia</i>	141, 238, 241
<i>harrisella</i> (L.), <i>Phyllonorycter</i>	244
<i>haworthana</i> (Stephens), <i>Glyphipterix</i> ..	246
<i>haywardi</i> (Tams), <i>Divaena</i>	226, 227
<i>heckfordi</i> van Nieukerken, <i>Ectoedemia</i> ..	156
<i>heegeriella</i> (Zeller), <i>Phyllonorycter</i>	244
<i>hellerella</i> (Dup.), <i>Blastodacna</i>	253
<i>helotella</i> (Staudinger), <i>Eulamprotes</i>	162
<i>helvola</i> (L.), <i>Anchoscelis</i>	275
<i>hepariella</i> Stainton, <i>Zelleria</i>	245
<i>heringella</i> (Mariani), <i>Ectoedemia</i>	8
<i>hexadactyla</i> L., <i>Alucita</i>	254
<i>hilarella</i> (Zetterstedt), <i>Phyllonorycter</i> ..	244
<i>hornigi</i> (Staudinger), <i>Monochroa</i>	8, 162
<i>horridella</i> (Treitschke), <i>Ypsolopha</i>	246
<i>hortulata</i> (L.), <i>Anania</i>	262
<i>hospes</i> (Frey.), <i>Proxenus</i>	63, 146
<i>hostis</i> Triberti, <i>Phyllonorycter</i>	159
<i>humilis</i> (Zeller), <i>Elachista</i>	253
<i>hybnerella</i> (Hübner), <i>Stigmella</i>	240
<i>hylaeiformis</i> (Laspeyres), <i>Pennisetia</i>	142
<i>hyperantus</i> (L.), <i>Aphantopus</i>	122, 155
<i>hyperici</i> (D. & S.), <i>Actinotia</i>	45, 62
<i>icarus</i> (Rott.), <i>Polyommatus</i>	124, 154
<i>ignorata</i> (Kuzn.), <i>Pammene</i>	260
<i>ignorata</i> Huemer & Hausmann, <i>Scotopteryx</i>	212, 213, 216
<i>illutana</i> (H.-S.), <i>Cydia</i>	260
<i>illyria</i> Frey., <i>Apamea</i>	224
<i>imitaria</i> (Hübner), <i>Scopula</i>	230
<i>immundana</i> (F. & R.), <i>Epinotia</i>	40-41
<i>immundella</i> (Zeller), <i>Trifurcula</i>	241
<i>impura</i> (Hübner), <i>Mythimna</i>	168, 169, 172, 173, 266
<i>incanana</i> (Stephens), <i>Eana</i>	256
<i>incarnatella</i> (Stuedel), <i>Rhigognostis</i>	246
<i>incerta</i> (Hufnagel), <i>Orthosia</i>	119-121
<i>incertana</i> (Treitschke), <i>Cnephasia</i>	162, 256
<i>incongruella</i> (Stainton), <i>Amphisbatis</i> ..	248
<i>innocentaria</i> (Christoph), <i>Dyscia</i>	127, 128, 132
<i>inornatella</i> (Douglas), <i>Brachmia</i>	249
<i>inquinatana</i> (Hübner), <i>Cydia</i>	49
<i>inscriptella</i> (Dup.),* <i>Delplanqueia</i>	185-189
<i>insectella</i> (Fabricius), <i>Haplotinea</i>	243
<i>inspersella</i> (Hübner), <i>Scythris</i>	254
<i>insulana</i> (Bois.), <i>Earias</i>	46, 65
<i>insularia</i> f. <i>betularia</i> (L.), <i>Biston</i>	206-211
<i>internana</i> (Guen.), <i>Grapholita</i>	260
<i>interpunctella</i> (Hübner), <i>Plodia</i>	53, 262
<i>interrogationis</i> (L.), <i>Syngrapha</i>	29-30
<i>intimella</i> (Zeller), <i>Ectoedemia</i>	241
<i>insularis</i> ssp. <i>jurtina</i> (L.), <i>Maniola</i> ..	197-198
<i>io</i> (L.), <i>Aglais</i>	124, 155
<i>ipsilon</i> (Hufnagel), <i>Agrotis</i>	67, 73
<i>irrella</i> (Hübner), <i>Yponomeuta</i>	245

<i>isodactylus</i> (Zeller), <i>Platyptilia</i>	254
<i>italica</i> Baldizzone, <i>Metalampra</i>	48, 247
<i>janthe</i> (Borkhausen), <i>Noctua</i>	81-84
<i>janthina</i> (ID. & S.), <i>Noctua</i>	59, 81
<i>janthinana</i> (Dup.), <i>Grapholita</i>	260
<i>josephinae</i> (Toll), <i>Pseudatemelia</i>	248
<i>juncicolella</i> (Stainton), <i>Coleophora</i>	251
<i>juncta</i> Tutt, f. of <i>chrysis</i> (L.), <i>Diachrysia</i>	147
<i>jurassicella</i> (Frey), <i>Mompha</i>	253
<i>jurtina</i> (L.), <i>Maniola</i>	122, 154, 197-198
<i>juventina</i> (Stoll), <i>Calloptistria</i>	206
<i>kadenii</i> (Frey.), <i>Platyperigea</i>	63
<i>kleini</i> Amsel (near), <i>Elachista</i>	160
<i>kollarella</i> (O.G.Kosta), <i>Odites</i>	161
<i>kuhlweiniella</i> (Zeller), <i>Phyllonorycter</i> ..	244
<i>labecula</i> (Esper), <i>Dryobota</i>	61
<i>lacteana</i> Caradja, <i>Bactra</i>	258
<i>laeteella</i> (Stephens), <i>Mompha</i>	253
<i>lacticolella</i> Rebel, <i>Blastobasis</i>	122, 254
<i>lactucae</i> (ID. & S.), <i>Cucullia</i>	222
<i>laetana</i> (Fabricius), <i>Ancylys</i>	258
<i>laetus</i> (Zeller), <i>Oxyptilus</i> ..	45, 53-54, 76, 77
<i>laevigatella</i> (Heyd.), <i>Argyresthia</i>	246
<i>laichartingella</i> (Goetze), <i>Diplodoma</i>	242
<i>l-album</i> (L.), <i>Mythimna</i>	60, 146
<i>lampra</i> (Schawerda), <i>Sideridis</i>	212
<i>lancealis</i> (ID. & S.), <i>Anania</i>	262
<i>langiella</i> (Hübner), <i>Mompha</i>	253
<i>langmaidi</i> Plant, <i>Tetramoera</i> ..	144, 237, 258
<i>lapidata</i> (Hübner), <i>Coenocalpe</i>	41-43
<i>laricella</i> (Hübner), <i>Coleophora</i>	251
<i>lathonia</i> (L.), <i>Issoria</i>	54
<i>lathoniellus</i> (Zincken), <i>Crambus</i>	263
<i>latistria</i> (Haworth), <i>Agriphila</i>	144
<i>latreillei</i> (Dup.), <i>Calloptistria</i>	129
<i>latruncula</i> (ID. & S.), <i>Oligia</i>	224
<i>leautieri</i> (Boisduval), <i>Lithophane</i>	231
<i>leguminana</i> (Lien. & Zeller), <i>Cydia</i>	200
<i>leporina</i> (L.), <i>Acrionicta</i>	230
<i>leucogaster</i> (Frey.), <i>Ochropleura</i>	46, 59
<i>leucographella</i> (Zeller), <i>Phyllonorycter</i>	9, 244
<i>leucophaearia</i> (ID. & S.), <i>Agriopis</i>	128, 229
<i>leucotreta</i> (Meyrick), <i>Thaumatotibia</i>	49
<i>leuwenhoekella</i> (L.), <i>Pancalia</i>	248
<i>levana</i> (L.), <i>Araschnia</i>	76
<i>lichenaria</i> (Hufnagel), <i>Cleorodes</i> ..	56, 140
<i>lichenella</i> (L.), <i>Dahlia</i>	242
<i>ligustri</i> (ID. & S.), <i>Craniophora</i>	230
<i>ligustri</i> L., <i>Sphinx</i>	230

<i>limacodes</i> (Hufn.), <i>Apoda</i>	101-103
<i>limbirena</i> (Guen.), <i>Ctenoplusia</i>	65
<i>limosipennella</i> (Dup.), <i>Coleophora</i>	250
<i>lineola</i> (Curtis), <i>Eudonia</i>	263
<i>lineola</i> (Ochs.), <i>Thymelicus</i>	154
<i>lineolea</i> (Haworth), <i>Coleophora</i>	251
<i>lithargyrinella</i> Zeller, <i>Coleophora</i>	251
<i>lithoxylaea</i> (ID. & S.), <i>Apamea</i>	224
<i>littoralis</i> (Westwood & Humphreys), <i>Lobesia</i>	257
<i>livornica</i> (Esper), <i>Hyles</i>	57
<i>lixella</i> (Zeller), <i>Coleophora</i>	251
<i>ljungiana</i> (Thunb.), <i>Argyrotaenia</i>	255
<i>lobarzewski</i> (Nowicki), <i>Grapholita</i> ..	144, 260
<i>locupletella</i> (ID. & S.), <i>Mompha</i>	253
<i>loeflingiana</i> (L.), <i>Aleimma</i>	256
<i>loganella</i> (Stainton), <i>Parornix</i>	244
<i>logiana</i> (Cl.), <i>Acleris</i>	257
<i>lonicerae</i> (Scheven), <i>Zygaena</i> ..	124, 151, 154
<i>loreyi</i> (Dup.), <i>Mythimna</i>	60-61
<i>lotella</i> (Hübner), <i>Anerastia</i>	262
<i>lucida</i> (Hufnagel), <i>Acontia</i>	147
<i>lucidella</i> (Stephens), <i>Monochroa</i>	249
<i>luctuosa</i> (ID. & S.), <i>Tyta</i>	176-179
<i>luctuosa</i> (Geyer), <i>Diaphora</i>	129
<i>luedersiana</i> (Sorh.), <i>Pammene</i>	261
<i>lunana</i> (Thunb.), <i>Philedonides</i>	255
<i>lunaris</i> (D. & S.), <i>Minucia</i>	45, 67
<i>lunaris</i> (Haworth), <i>Battia</i>	248
<i>lunifera</i> (Warren), <i>Xylena</i>	130
<i>lunularia</i> (Hübner), <i>Selenia</i>	56
<i>lupulinus</i> (L.), <i>Heptalius</i>	122
<i>luridata</i> (Hufnagel), <i>Scotopteryx</i> ..	213, 216
<i>lurideola</i> (Zincken), <i>Eilema</i>	108-110
<i>luteolata</i> (L.), <i>Opisthograptis</i>	122
<i>luzella</i> (Hübner), <i>Lampronia</i>	242
<i>lychnidis</i> (ID. & S.), <i>Agrochola</i>	275
<i>machaon</i> (L.), <i>Papilio</i>	54
<i>maculicerusella</i> Bru., <i>Elachista</i>	253
<i>maculosa</i> [(D. & S.)], <i>Chelis</i>	221
<i>maeotricaria</i> (Alphéraky), <i>Asovia</i>	212, 215, 218
<i>malella</i> (Stainton), <i>Stigmella</i>	240
<i>malifoliella</i> (Costa), <i>Leucoptera</i>	123
<i>malinellus</i> Zeller, <i>Yponomeuta</i>	245
<i>malvae</i> (L.), <i>Pyrgus</i>	176-179
<i>manniana</i> (F. v. R.), <i>Phalonidia</i>	138
<i>margaritacea</i> (de Villers), <i>Chersotis</i> ..	227
<i>margaritella</i> (ID. & S.), <i>Catoptria</i>	263
<i>margarotana</i> Heinemann, <i>Gravitarmata</i> ..	49
<i>marginaria</i> (Fabricius), <i>Agriopis</i> ..	208, 210
<i>marginata</i> (L.), <i>Lomaspilis</i>	230

marginella (Fabricius), *Dichomeris*249
maroccanella Amsel, *Blastobasis*254
mayrella (Hübner), *Coleophora*251
mediterranea Ganev ssp. of *puella*
(Esper), *Boudinotiana*116-118
megacephala (ID. & S.), *Acronicta*230
mendica (Fabricius), *Diarsia*225
mercurella (L.), *Eudonia*263
merdella (Zeller), *Proterospastis* ...159, 164
messomella (L.), *Cybosia*108, 110
messaniella (Zeller), *Phyllonorycter*244
messingiella (F. v. R.), *Eidophasia*246
metallella (ID. & S.), *Antispila*242
metaxella (Hübner), *Nematopogon*242
micalis (Mann), *Tebenna*48, 76, 255
microdactyla (Hübner), *Adaina*254
microtheriella (Stainton), *Stigmella*240
mindara (Barnes & McDunnough),
Proxenus172
minimella (Zetterstedt), *Ectoedemia*241
miniosa (D. & S.), *Orthosia*59
minutana (Hübner), *Gyponoma* ...163, 259
minutella (L.), *Borkhausenia*160
modesta (Stdgr.), *Dasycorsa*128
moesta (Busck), *Grapholita*260
molitana (Zeller), *Pelochrista*163
molliculana Zeller, *Cochylis*257
monochroma (Esper), *Dryobotodes* 225, 226
monoglypha (Hufnagel), *Apamea*..168-169,
171, 173, 223, 224, 266
morpheus (Hufnagel), *Caradrina* ..171, 174
multangula (Hübner), *Chersotis*227
multistrigaria (Haworth), *Colostygia* ...209
munda (D. & S.), *Anorthoa*119-121
munda (D. & S.), *Orthosia*119-121
mundella f. of *umbrosella* (Zeller),
Brytrophra249
muralis (Forster), *Nyctobrya*29-30
muralis Forster, *Cryphia*29-30
muscerda (Hufnagel), *Pelosia*58
myllerana (Fabricius), *Prochoreutis*255
myrtillana (H. & W.), *Rhopobota*258
myrtillella (Stainton), *Stigmella*240
myrtilli (L.), *Anarta*135-136
nanana (Treitschke), *Epinotia*259
napi (L.), *Pieris*122, 155
nebulella (D. & S.), *Homeosoma*53
nemoralis (Scopoli), *Agrotera*53
memorana (Hb), *Choreutis*238, 255
nemoralla (L.), *Ypsolopha*246
nerii (L.), *Daphnis*56
neustria (L.), *Malacosoma* ...171, 173, 266

ni (Hübner), *Trichoplusia*65
nicelli (Stainton), *Phyllonorycter*244
nigra(Haworth), *Gelechia*139
nigrata (Scopoli), *Pyrausta*262
nigrescens Hufnagel, *Dichagyris*225
nigricana (H.-S.), *Epinotia*238, 259
nigradorsella Amsel, *Coleophora* ..161, 165
nigropunctata (Hufnagel), *Scopula*55
nitidalis (Walk.), *Musotima*50, 264
nitidana (Fabricius), *Strophedra*261
nitidula (Hufnagel), *Nymphula*263
noctulla (D. & S.), *Nomophila*67, 69
nonagroides (Lefeb.), *Sesamia*46, 62
notana (Don.), *Acleris*257
notata (L.), *Macaria*114
nubeculosa (Esper), *Brachionycha*129
nubiferana (Haworth), *Hedya*125
nubilalis (Hübner), *Ostrinia*51
nupta (L.), *Catocala*171
nymphagoga (Esper), *Catocala*221
obliquella (Hein.), *Stigmella*.....1, 3, 8, 240
oblitella (Dup.), *Ancyloclosis*53
obratzsovi Amsel, *Gyponoma*163
obscurata (ID. & S.), *Charissa*215
obscuripunctella (Stainton), *Perittia*252
obsitalis (Hübner), *Hypena*67
obsoletella (F. v. R.), *Scrobipalpa*250
obstipata (Fabricius), *Orthonama*71
obtusana (Haworth), *Ancylicis*258
obumbratana (Lien. & Zeller),
Eucosma259
oculta (L.), *Eurois*59
ocellana (ID. & S.), *Spilonota*258
ocellana (Fabricius), *Agonopterix*248
ocellaris (Borkh.), *Xanthia*62
ocellea (Haworth), *Euchromius*50
ochrata (Scopoli), *Idaea*45, 55
ochsenheimeriana (Lien. & Zeller),
Pammene139
ochsi (Boursin), *Cryphia*219, 222
ocnerostomella (Stainton), *Tinagma*159
ocularis (L.), *Tethea*230
oehlmanniella (Hübner), *Incurvaria*242
ohridella (Deschka & Dimic),
Cameraria245
oleae (Bernard), *Prays*48
olivialis (ID. & S.), *Udea*262
oliviella (Fabricius), *Dasycera*248
ononaria (Fuessl.), *Aplasta*55
onustaria (H.-S.), *Charissa* ...127, 128, 132
opalina (Esper), *Calophassa*129
opima (Hübner), *Orthosia*130, 141

<i>orbitella</i> Zeller, <i>Coleophora</i>	251
<i>orichalcea</i> (Frey.), <i>Thysanoplusia</i>	66
<i>orichalcea</i> Stainton, <i>Cosmopterix</i>	249
<i>osteodactylus</i> (Zeller), <i>Hellinsia</i>	238,
254, 264	
<i>ostrina</i> (Hübner), <i>Eublemma</i>	63
<i>otidipennella</i> (Hübner), <i>Coleophora</i>	251
<i>oxyacanthae</i> (L.), <i>Allophyes</i>	275
<i>pachnodes</i> (Meyrick), <i>Ascalenia</i>	162, 165
<i>padella</i> (L.), <i>Yponomeuta</i>	245
<i>paleacea</i> (Esper), <i>Enargia</i>	62
<i>palealis</i> (D. & S.), <i>Sitochroa</i>	238, 262
<i>paleana</i> (Hufnagel), <i>Aphelia</i>	23
<i>pallida</i> (Curtis), <i>Eudonia</i>	263
<i>pallidata</i> (Hufnagel), <i>Evergestis</i>	263
<i>palpellus</i> (Haworth), <i>Aplota</i>	248
<i>paludella</i> (Hübner), <i>Calamotropha</i>	263
<i>palumbella</i> (D. & S.), <i>Pempelia</i>	165
<i>pallustrellus</i> (Dougl.), <i>Monochroa</i>	250
<i>pamphilus</i> (L.), <i>Coenonympha</i>	155
<i>panchalcella</i> (Staudinger), <i>Wegneria</i>	159
<i>paphia</i> (L.), <i>Argynnis</i>	55
<i>parasita</i> (Hübner), <i>Ocnogyna</i>	129
<i>parva</i> (Hübner), <i>Eublemma</i>	45, 63-64, 76,
147, 206	
<i>pascuella</i> (L.), <i>Crambus</i>	263
<i>pasiuana</i> (Hübner), <i>Cnephasia</i>	147, 148
<i>pastorella</i> (Zeller),* <i>Phyllonorycter</i>	1-10,
237, 245	
<i>pavonia</i> (L.), <i>Saturnia</i>	11, 280-281
<i>pectinea</i> Haworth, <i>Incurvaria</i>	95-96
<i>pedella</i> (L.), <i>Stathmopoda</i>	254
<i>pellionella</i> L., <i>Tinea</i>	243
<i>peltigera</i> (D. & S.), <i>Heliothis</i>	75, 206
<i>pennaria</i> (L.), <i>Colotois</i>	275
<i>pennella</i> (D. & S.), <i>Coleophora</i>	155
<i>pentadactyla</i> (L.), <i>Pterophorus</i>	154
<i>penziana</i> (Thunb.), <i>Eana</i>	256
<i>peregrina</i> Agassiz, <i>Prays</i>	247
<i>peribenanderi</i> (Toll), <i>Coleophora</i>	252
<i>perieresalis</i> (Walk.), <i>Diplopseustis</i>	51, 166,
262	
<i>perlucidalis</i> (Hübner), <i>Anania</i>	262
<i>permixtaria</i> (H.-S.), <i>Catarhoe</i>	212-215, 217
<i>perspectalis</i> (Walk.), <i>Cydalima</i>	18-22, 52,
144, 263	
<i>phasianipenella</i> (Hübner), <i>Calybitis</i>	243
<i>phragmitella</i> Stainton, <i>Limnaecia</i>	249
<i>pilosaria</i> (D. & S.), <i>Phigalia</i>	208, 210
<i>pilosaria</i> , <i>Apocheima</i>	208, 210
<i>pinastri</i> (L.), <i>Hyloicus</i>	230
<i>pinguis</i> (Haworth), <i>Euzophera</i>	262
<i>pini</i> (L.), <i>Dendrolimus</i>	45, 55
<i>pinicolana</i> (Doubleday), <i>Rhyacionia</i>	260
<i>pinicolella</i> (Zeller), <i>Batrachedra</i>	250
<i>pinivorana</i> (Lien. & Zeller), <i>Rhyacionia</i>	260
<i>platani</i> (Staud), <i>Phyllonorycter</i>	9, 238
<i>plebejana</i> (Zeller), <i>Crociosema</i>	259
<i>plexippus</i> (L.), <i>Danaus</i>	55
<i>plumigera</i> (D. & S.), <i>Ptilophora</i>	275
<i>plumigeralis</i> (Hübner), <i>Pechipogo</i>	67
<i>podalirius</i> (L.), <i>Iphiclides</i>	54
<i>politella</i> (Stainton), <i>Bryotropha</i>	156, 249
<i>polychloros</i> (L.), <i>Nymphalis</i>	54
<i>polygrammata</i> (Borkh.), <i>Costaconvexa</i>	56
<i>polyodon</i> (Clerck), <i>Actinotia</i>	45, 62
<i>populana</i> (Fabricius), <i>Pammene</i>	261
<i>populella</i> (Clerck), <i>Anacampsis</i>	249
<i>populeti</i> (Fabricius), <i>Orthosia</i>	130
<i>populetorum</i> (Zeller), <i>Caloptilia</i>	243
<i>populi</i> (L.), <i>Laithoe</i>	123, 230
<i>populi</i> (L.), <i>Poecilocampa</i>	129, 275
<i>populifoliella</i> (Treitschke), <i>Phyllonorycter</i>	7
<i>postvittana</i> (Walker), <i>Epiphyas</i>	199, 256
<i>potentillae</i> Elisha, <i>Coleophora</i>	139
<i>potentillella</i> (Zeller), <i>Scythris</i>	254, 264, 282
<i>poterii</i> (Stainton), <i>Stigmella</i>	241
<i>praeangusta</i> (Haworth), <i>Batrachedra</i>	250
<i>praecox</i> (L.), <i>Actebia</i>	59
<i>praelatella</i> (D. & S.), <i>Incurvaria</i>	242
<i>prenanthis</i> (Boisduval), <i>Shargacucullia</i>	222
<i>pretiosa</i> (Hein.), <i>Stigmella</i>	241
<i>proboscidata</i> (H.-S.), <i>Orectes</i>	221
<i>profundana</i> (D. & S.), <i>Eudemis</i>	238, 257
<i>promissa</i> (D. & S.), <i>Catocala</i>	45, 66
<i>pronuba</i> (L.), <i>Noctua</i>	59, 170, 172, 173,
229, 266	
<i>pronubana</i> (Hübner), <i>Cacoecimorpha</i>	255
<i>propinquella</i> (Stainton), <i>Mompha</i>	253
<i>pruinata</i> (Hufnagel), <i>Pseudoterpna</i>	213
<i>prunetorum</i> (Stainton), <i>Stigmella</i>	240
<i>pruniella</i> (Clerck), <i>Argyresthia</i>	247
<i>prunifoliella</i> (Hübner), <i>Lyonetia</i>	247
<i>pseudospretella</i> (Stainton), <i>Hofmannophila</i>	172, 248
<i>puella</i> (Esper), <i>Boudinotiana</i>	116-118
<i>puella</i> ssp. of <i>puella</i> Esper., <i>Boudinotiana</i>	118
<i>pulchella</i> (L.), <i>Utetheisa</i>	46, 58
<i>pulchrimella</i> Chambers, <i>Cosmopterix</i>	249
<i>pullicariae</i> (Klimesch), <i>Digitivalva</i>	246
<i>pullata</i> (D. & S.), <i>Charissa</i>	215, 218
<i>pumicana</i> (Zeller), <i>Cnephasia</i>	143

pupillaria (Hübner), *Cyclophora*55
purpurata (L.), *Rhyparia*221
purpurea (Haworth), *Agonopterix*248
purpurina (D. & S.), *Eublemma*63, 76
puta (Hübner), *Agrotis*177
putridaria (H.-S.), *Catarhoe*212, 213,
215, 217
pygmaeana (Hübner), *Epinotia*259
pyralella (ID.& S.), *Scoparia*263
pyramidea (L.), *Amphipyra*229
pyrausta (Pallas), *Ethmia*11-17
pyrella (Villiers), *Swammerdamia* .126, 245
quadra (L.), *Lithosia*58
quadrillella (Goeze), *Ethmia*49
quadrimalculana (Haworth),
Endothenia139, 258
quadripuncta (Haworth), *Oegoconia*.....247
quadrifunctaria (Poda), *Euplagia* .145, 221
quercifoliella (Zeller), *Phyllonorycter*...244
quercus (L.), *Lasiocampa*221
rajella (L.), *Phyllonorycter*.....244
ramburialis (Dup.), *Diasemiopsis*51-52,
76, 263
ramella (L.), *Epinotia*259
rapae (L.), *Pieris*54, 114-115, 123, 154
raschkiella (Zeller), *Mompha*253
ratzeburgiana (Saxesen), *Zeiraphera*259
reaumurella (L.), *Adela*123
rebeli Karsh, & Sin., *Blastobasis*254
rectangula (ID. & S.), *Chersotis*225
recurvalis (Fabricius), *Spoladea*46, 52,
76, 263
regiella (H.-S.), *Stigmella*240
regificella (Sirc.), *Elachista*252
reisseri (Razowski), *Phtheochroa* ...97-101
renati meszarosi Varga, *Conisania*212
resedana Obratsov, *Selania*164
resplendella (Stainton), *Heliozela*159,
163, 242
reticulata (Boisd.), *Heliophobus*59
rhamni (L.), *Gonepteryx*154
rhediiella (Clerck), *Pammene*261
rhombana (ID. & S.), *Acleris*256
ridens (Fabricius), *Polyploca*128
roborella (Johansson), *Stigmella* ...238, 241
roboris Zeller, *Phyllonorycter*244
robustana (Christoph), *Bactra*258
rorrella (Hübner), *Yponomeuta*.....238, 245
rosana (L.), *Archips*162
rubigana (Treitschke), *Aethes*257
rubiginata, *Plemyria*229
rubiginosa (Scopoli), *Conistra*61

rubiginosana (H.-S.), *Epinotia*259
rufana (ID. & S.), *Acleris*257
ruficeps (Hein.), *Prays*.....143, 247
ruficiliana (Haworth), *Falseuncaria*257
ruficiliaria (H.-S.), *Cyclophora*55
ruficornis (Hufnagel), *Drymonia*129
rufimitrana (H.-S.), *Zeiraphera*264
rufipennella (Hübner), *Caloptilia*243
rufocincta (Geyer), *Polymixis*.....275
rufocinerea (Haworth), *Elachista*253
rusticata (D. & S.), *Idaea*56
sabadiata (Dup.), *Triphosa*215
sacaria (L.), *Rhodometra*46, 70
sagitella (Bjerk.), *Phyllonorycter*7
sakhalinella Puplesis, *Stigmella*240
salaciella (Treitschke), *Opostega*241
salicata (Hübner), *Nebula*145
salicis (L.), *Leucoma*57, 230
salicorniae Hein. & Wocke,
Coleophora252
saligna (Zeller), *Phyllocnistis*...8, 160, 245
salopiella (Stainton), *Eriocrania*240
samiatella (Zeller), *Stigmella*241
samosella Sutter, *Batia*161, 164
santolinella (Amsel), *Metzneria*162
santonici (Hübner), *Cucullia*212- 214,
219, 222
saucia (Hübner), *Peridroma*73-74, 169,
172, 266
saxicola (Vaughan), *Phycitodes*262
saxicolella (Dup.), *Coleophora*252
scabrella (L.), *Ypsolopa*246
scandinaviaria Staudinger ssp. of
brunnearia (Villiers), *Selidosema* 269. 270
schalleriana (L.), *Acleris*256
schulziana (Fabricius), *Phiaris*257
schumacherana (Fabricius), *Olindia*255
scirpi Stainton, *Elachista*253
scoriacea (Esper), *Cleoceris*130
scribaiella Zeller, *Cosmopterix*249
sedella (Wals.), *Yponomeuta*245
sehestediana (Fabricius), *Prochoreutis*..255
selini (Boisduval), *Caradrina*224
semifusca (Haworth), *Argyresthia*247
semirubella (Scopoli), *Oncocera*.....53, 261
semitestacella (Curtis), *Argyresthia*.....247
senecionana (Hübner), *Clepsis*256
senectella (Zeller), *Bryotropha*249
senna contorta (Rebel & Zerny),
Spaelotis227
septembrella (Stainton),
Ectoedemia.....203-204, 241

<i>sequella</i> (Clerck), <i>Ypsolopha</i>	246
<i>sericopeza</i> (Zeller), <i>Ectoedemia</i>	241
<i>serratella</i> (L.), <i>Coleophora</i>	250
<i>sexpunctella</i> (Fabricius), <i>Prolita</i>	250
<i>shepherdana</i> (Stephens), <i>Acleris</i>	139
<i>sicula</i> (Turati), <i>Apamea</i>	224
<i>signatana</i> (Douglas), <i>Epinotia</i>	259
<i>signifera</i> (ID. & S.), <i>Dichagyris</i>	225
<i>similella</i> (Hübner), <i>Denisia</i>	247
<i>similella</i> (Zincken), <i>Elegia</i>	53
<i>similis</i> (Stainton), <i>Bryotropha</i>	249
<i>simpliciella</i> (Stephens), <i>Glyphipterix</i>	123, 246
<i>simulans</i> (Hübner), <i>Rhyacia</i>	59, 225
<i>smeathmanniana</i> (Fabricius), <i>Aethes</i>	257
<i>sociella</i> (L.), <i>Aphomia</i>	261
<i>solandriana</i> (L.), <i>Epinotia</i>	258
<i>somnulentella</i> (Zeller), <i>Bedellia</i>	160, 247
<i>sorbi</i> (Frey.), <i>Phyllonorycter</i>	244
<i>sorbi</i> (Stainton), <i>Stigmella</i>	241
<i>sorbiella</i> (Treitschke), <i>Argyresthia</i>	246
<i>sordidana</i> (Hübner), <i>Epinotia</i>	258
<i>sordidatella</i> (Tengst.), <i>Depressaria</i>	248
<i>sororculella</i> (Hübner), <i>Gelechia</i>	250
<i>sparagnella</i> (Thunb.), <i>Orthotelia</i>	246
<i>sparmannella</i> (Bosc.), <i>Eriocrania</i>	240
<i>sparsana</i> (ID. & S.), <i>Acleris</i>	256
<i>spinella</i> (Schrank), <i>Coleophora</i>	250
<i>spiniana</i> (Dup.), <i>Pammene</i>	261
<i>spinicolella</i> (Zeller), <i>Phyllonorycter</i>	244
<i>splendana</i> (Hübner), <i>Cydia</i>	260
<i>splendens</i> (Hübner), <i>Lacanobia</i>	59
<i>splendens</i> Cockayne ab. <i>caja</i> (L.), <i>Arctia</i>	193-194
<i>splendidulana</i> (Guen.), <i>Pammene</i>	260
<i>sponsa</i> (L.), <i>Catocala</i>	45, 66-67
<i>stagnana</i> (ID. & S.), <i>Rhopobota</i>	258
<i>steinkellneriana</i> (ID. & S.), <i>Semioscopis</i>	248
<i>stellatarum</i> (L.), <i>Macroglossum</i>	67, 72-73, 154, 206
<i>stenochrysis</i> (Warren), <i>Diachrysia</i>	147
<i>steropodes</i> (Meyrick), <i>Pachyrhabda</i>	254
<i>stettinensis</i> (Nic.), <i>Phyllonorycter</i>	160
<i>stigmatella</i> (Fabricius), <i>Caloptilia</i>	8, 243
<i>Stigmella</i>	123
<i>straminea</i> (Haworth), <i>Cochylimorpha</i>	257
<i>straminella</i> (D. & S.), <i>Agriphila</i>	122
<i>striana</i> (D. & S.), <i>Celypha</i>	257
<i>striatipennella</i> Nyl., <i>Coleophora</i>	252
<i>strigana</i> (Fabricius), <i>Lathronympha</i>	260
<i>striolella</i> (Matsumura), <i>Niditinea</i>	243
<i>strobilella</i> (L.), <i>Cydia</i>	139, 260
<i>suava</i> (Hübner), <i>Odice</i>	221
<i>suavis</i> (Butler), <i>Pseudocoremia</i>	56, 77
<i>subalbidella</i> Schläg., <i>Elachista</i>	252
<i>subcognata</i> (Ragonot) ssp. of <i>bistriatella</i> (Hulst), <i>Apomyelois</i>	53
<i>sublineatella</i> (Staudinger), <i>Amphithrix</i>	166
<i>sublustris</i> (Esper), <i>Apamea</i>	212, 224
<i>subnigrella</i> (Dougl.), <i>Elachista</i>	252
<i>subocellana</i> (Don.), <i>Epinotia</i>	110-111, 259
<i>subocellea</i> (Stephens), <i>Elachista</i>	252
<i>subornatella</i> (Dup.), <i>Delplanqueia</i>	185-189
<i>subrosea</i> (Stephens), <i>Coenophila</i>	85-87
<i>suffusella</i> (Douglas), <i>Monochroa</i>	250
<i>suscianja</i> (von Mentzer), <i>Caradrina</i>	212, 214, 220, 222, 223
<i>svenssoni</i> (Fletcher), ssp. of <i>berbera</i> Rungs, <i>Amphipyra</i>	222
<i>sylvaticella</i> Wood, <i>Coleophora</i>	252
<i>sylvestris</i> (Poda), <i>Thymelicus</i>	154
<i>syriaca tallosi</i> Kovacs & Varga, <i>Apamea</i>	212, 214, 223, 224
<i>taenialis</i> (Hübner), <i>Schrankia</i>	221
<i>taeniipennella</i> H.-S., <i>Coleophora</i>	251
<i>tamesis</i> Waters, <i>Coleophora</i>	251
<i>tarda</i> Meyrick, <i>Blastobasis</i>	161, 165
<i>taurella</i> (ID. & S.), <i>Ochsenheimeria</i>	246
<i>tedella</i> (Cl.), <i>Epinotia</i>	259
<i>templi</i> (Thunb.), <i>Dasyptilia</i>	130, 275
<i>tenebrosana</i> (Dup.), <i>Grapholita</i>	260
<i>tenuipennella</i> Gaedike, <i>Neurothaumasia</i>	159
<i>terebrella</i> (Zincken), <i>Assara</i>	53
<i>terminella</i> (H. & W.), <i>Mompha</i>	143, 253
<i>terminella</i> Fletcher, <i>Ethmia</i>	238, 248
<i>terrea</i> Frey., <i>Caradrina</i>	220, 222
<i>terrealis</i> (Treitschke), <i>Anania</i>	262
<i>tertia</i> Mentzer, Moberg & Fibiger, <i>Noctua</i>	81, 83
<i>tessulatana</i> (Stgr.), <i>Pseudococcyx</i>	49
<i>testudinaria</i> (Geoff.), <i>Hyphoraraia</i>	59
<i>tetra</i> (Fabricius), <i>Amphipyra</i>	222
<i>tetragonana</i> (Stephens), <i>Notocelia</i>	259
<i>tetralunaria</i> (Hufnagel), <i>Selenia</i>	215
<i>texanella</i> Chambers, <i>Coleophora</i>	161
<i>thapsiana</i> (Zeller), <i>Epinotia</i>	162
<i>tincta</i> (Kane) ssp. of <i>captiuncula</i> (Tr.), <i>Photedes</i>	37-40
<i>tinctella</i> (Hübner), <i>Crassa</i>	248
<i>tithonus</i> (L.), <i>Pyronia</i>	122, 155
<i>tokei</i> Larsen, <i>Clavigesta</i>	163
<i>trabeatella</i> (H.-S.), <i>Agriphila</i>	166
<i>traganella</i> (Chrétien), <i>Scrobipalpa</i>	162

<i>tragopoginis</i> (Clerck), <i>Amphipyra</i>	171, 173
<i>trapeziella</i> (Stainton), <i>Elachista</i>	253
<i>trauniana</i> (ID. & S.), <i>Pammene</i>	261
<i>triatomea</i> (Haworth), <i>Elachista</i>	252
<i>tridens</i> (Hufnagel), <i>Calamia</i>	40, 224
<i>trifasciata</i> Stdgr., <i>Argyresthia</i>	246
<i>trifasciella</i> (Haworth), <i>Phyllonorycter</i>	160, 244
<i>trifolii</i> (Curtis), <i>Coleophora</i>	251
<i>trifolii</i> (Hufnagel), <i>Anarta</i>	171, 174
<i>trifolii</i> (Hufnagel), <i>Discestra</i>	59
<i>trigeminata</i> (Haworth), <i>Idaea</i>	213
<i>trigeminella</i> Fuchs, <i>Coleophora</i>	250
<i>trimaculana</i> (Haworth), <i>Notocelia</i>	260
<i>trimaculella</i> (Haworth), <i>Stigmella</i>	158, 241
<i>triquetrella</i> (Hübner), <i>Dahlica</i>	242
<i>tresignaria</i> (H.-S.), <i>Eupithecia</i>	140
<i>tritici</i> (L.), <i>Euxoa</i>	147
<i>tritophus</i> (D. & S.), <i>Notodonta</i>	45, 57
<i>tullia</i> Müller, <i>Coenonympha</i>	135, 208
<i>tumidana</i> (D. & S.), <i>Acrobasis</i>	53
<i>tunbergella</i> (Fabricius), <i>Micropterix</i>	239
<i>turbida</i> (Esper), <i>Sideridis</i>	212, 225
<i>turpella</i> (ID. & S.), <i>Gelechia</i>	250
<i>tuscaria</i> (Borkhausen), <i>Crocalis</i>	128
tutti Kostrowicki, f. of <i>chrysis</i> , <i>Diachrysia</i>	147
<i>ulceratalis</i> Lederer, <i>Cornifrons</i>	166
<i>uliginosellus</i> Zeller, <i>Crambus</i>	263
<i>ulmifoliae</i> Hering, <i>Bucculatrix</i>	243
<i>ulmivora</i> (Fol.), <i>Stigmella</i>	240
<i>ulmella</i> Staint, <i>Depressaria</i>	248
<i>umbrana</i> (Hübner), <i>Acleris</i>	49, 256
<i>umbrosella</i> (Zeller), <i>Bryotropha</i>	249
<i>uncella</i> (ID. & S.), <i>Ancyliis</i>	258
<i>undalis</i> (Fabricius), <i>Hellula</i>	46, 50
<i>unguicella</i> (L.), <i>Ancyliis</i>	258
<i>unipuncta</i> (Haworth), <i>Mythimna</i>	60
<i>unitana</i> (Hübner), <i>Aphelia</i>	23, 255
<i>unitella</i> (Hübner), <i>Crassa</i>	248
<i>urticae</i> (L.), <i>Aglais</i>	154
<i>ustula</i> (Frey), <i>Epimecia</i>	212, 213, 219, 222
<i>ustulana</i> (Haworth), <i>Endothenia</i>	258
<i>utonella</i> (Frey), <i>Elachista</i>	253
<i>variegana</i> (ID. & S.), <i>Acleris</i>	256
<i>variegata</i> (Duponchel), <i>Charissa</i>	128
<i>verbascalis</i> (ID. & S.), <i>Anania</i>	166
<i>verellus</i> (Zincken), <i>Catoptria</i>	45, 50, 77, 263
<i>verhuella</i> Bruand, <i>Psychoides</i>	243
<i>versicolor</i> (Borkhausen), <i>Oligia</i>	225
<i>versurella</i> (Zeller), <i>Coleophora</i>	161
<i>vestianella</i> (L.), <i>Coleophora</i>	252

<i>vetusta</i> (Hübner), <i>Xylena</i>	61
<i>vetustata</i> (D. & S.), <i>Thera</i>	46, 56
<i>v-flava</i> (Haworth), <i>Oinophila</i>	48
<i>viburnana</i> (D. & S.), <i>Aphelia</i>	23, 256
<i>viminalis</i> (Fabricius), <i>Brachylomia</i>	225
<i>viminiella</i> (Sirc.), <i>Phyllonorycter</i>	8, 244
<i>violacea</i> (Ström), <i>Coleophora</i>	251
<i>virgaureae</i> Stainton, <i>Coleophora</i>	252
<i>virgaureata</i> Doubleday, <i>Eupithecia</i>	89-94
<i>viscariella</i> (Stainton), <i>Caryocolum</i>	250
<i>vitellina</i> (Hübner), <i>Mythimna</i>	74
<i>vitrata</i> (Fabricius), <i>Maruca</i>	51
<i>vitrealis</i> (Rossi), <i>Palpita</i>	46, 69, 263
<i>vittata</i> (Staudinger), <i>Paradrymonia</i>	212, 221
<i>vittata</i> (Woll.), <i>Blastobasis</i>	238, 254
<i>weaveri</i> (Stainton), <i>Ectoedemia</i>	241
<i>weirana</i> (Douglas), <i>Strophedra</i>	261
<i>wilkella</i> (L.), <i>Eulamprotes</i>	250
<i>wolffiella</i> Karsholt & Nielsen, <i>Nemapogon</i>	243
<i>xenia</i> Hering, <i>Phyllocnistis</i>	142, 245
<i>xylostella</i> (L.), <i>Plutella</i>	27, 67, 68, 123
<i>yeatiana</i> (Fabricius), <i>Agonopterix</i>	248
<i>ziczac</i> (L.), <i>Notodonta</i>	230
<i>zieglerella</i> (Hübner), <i>Cosmopterix</i>	249
<i>zinckenella</i> (Treitschke), <i>Etiella</i>	46, 53

ARACHNIDA

<i>Tetragnatha extensa</i> (L.)	125
<i>Cheletomorpha lepidopterorum</i> (Shaw)	168-175, 265-266

DIPTERA

<i>Aulagromyza luteoscutellata</i> (de Meijere)	44
<i>Phytomyza minuscula</i> Goureau	278
<i>Episyrphus balteatus</i> (Degeer)	125

HETEROPTERA

<i>Psallus falleni</i> Reuter	32
<i>Psallus scholtzi</i> Douglas & Scott	31-32
<i>Psallus alnicola</i> Douglas & Scott	31-32
<i>Psallus salicis</i> (Kirschbaum)	31-32

HYMENOPTERA

<i>Diadegma naryciae</i> Horstmann	24-26
<i>Euura atra</i> (Jurine)	110
<i>crabro</i> L., <i>Vespa</i>	26
<i>Vespula</i> sp.	194

MEGALOPTERA

<i>Sialis lutaria</i> L.	176
-------------------------------	-----

ODONATA

<i>Sympetrum striolatum</i> (Charpentier)	125
<i>Lestes sponsa</i> (Hansemann).....	125
<i>Enallagma cyathigerum</i> (Charpentier) ..	125
<i>Coenagrion puella</i> (L.)	125

NEUROPTERA

<i>Chrysopa perla</i> (L.)	125
<i>Nothochrysa fulviceps</i> (Stephens) ..	205-206

PSOCOPTERA

<i>Blaste quadrimaculata</i> (Latreille).....	17
---	----

THYSANOPTERA

<i>Aelothrips intermedius</i> Bagnall	30-31
<i>Melanthrips ficalbi</i> Buffa	30-31
<i>Melanthrips fuscus</i> (Sulzer).....	30-31
<i>Rhipidothrips brunneus</i> Williams.....	30-31

TRICHOPTERA

<i>Neureclipsis bimaculata</i> (L.)	125
---	-----

