

FLEA BEETLES OF THE GENUS *ALTICA* FOUND ON GRAPE IN NORTHEASTERN NORTH AMERICA (COLEOPTERA: CHRYSOMELIDAE)

LAURENT LeSAGE

Agriculture Canada, Agriculture and Agri-Food Canada, 960 Carling Ave.,
Ottawa, Ontario, Canada, K1A 0C6 (e-mail: lesage@agr.gc.ca)

J. ent. Soc. Ont. 133: 3–46

Abstract

Two species of *Altica*, *A. chalybea* Illiger (Grape Flea Beetle) and *A. woodsi* Isely (Lesser Grape Flea Beetle), are described and treated in detail. A key is provided for their distinction. Information is given on their distribution, host-plants, parasites, predators, common names, economic importance, and control. Comments on misidentifications found in the literature are also provided.

J. ent. Soc. Ont. 133: 3–46

Résumé

L'auteur décrit et traite en détail de deux espèces d'*Altica*, *A. chalybea* Illiger (Altise de la vigne) et *A. woodsi* Isely (Petite altise de la vigne), et propose une clé d'identification pour les déterminer. Il fournit également de l'information concernant leur répartition géographique, leurs plantes-hôtes, leurs parasites, leurs prédateurs, leur nom vernaculaire, leur importance économique et les moyens de lutte. Enfin, il commente les erreurs de détermination de la littérature.

Introduction

There are three major leaf beetle pests on grape in the northeastern North America. The Grape Rootworm, *Fidia viticida* Walsh, 1867, occasionally causes important damage to cultivated varieties; the adults feed on foliage whereas the larvae are root feeders. The other two pests are species of the genus *Altica* Geoffroy, 1762: *A. chalybea* Illiger, 1807 and *A. woodsi* Isely, 1920.

The purpose of the present paper is to describe in detail, and illustrate, the adults of these latter two species. Both species being very important economically, misidentifications and confusions found in the literature are clarified. Since many common names have been attributed to these pests over the years, their proper uses are also discussed.

Materials and Methods

The format and terminology of the descriptions, as well as the characters and the measurements provided here, are the same as those already used in my previous contributions to the revision of the North American species of the genus *Altica*, with the addition of notes on the contents of the citations in the literature review (LeSage 1995, 2000; LeSage and Denis 1999).

The following list of collection acronyms is in addition to those already given in LeSage (1995):

- CCC Claude Chantal (private) Collection. Association des entomologistes amateurs du Québec Inc., 302 Gabrielle Roy, Varennes, Québec, Canada J3X 1L8. c/o Claude Chantal.
- CFIM Collections en Fiducie de l'Insectarium de Montréal, Insectarium de Montréal, 4581 Sherbrooke Est, Montréal, Québec, Canada H1X 2B2. c/o Georges Brossard.

- EMEC Essig Museum of Entomology Collection, University of California, California Insect Survey, 201 Wellman Hall #3112, Berkeley, California 94720, USA c/o Cheryl B. Barr.
- UNHC University of New Hampshire Collection, Entomological Museum, University of New Hampshire, Department of Entomology, Nesmith Hall, Durham, New Hampshire 03824, USA c/o Donald S. Chandler.
- YPMC Yale Peabody Museum Collection, Peabody Museum of Natural History, Yale University, Entomology Division, 170 Whitney Avenue, PO Box 208118, New Haven, Connecticut 06520-8118, USA c/o Raymond Pupedis.

**Identification Key to *Altica* Flea-Beetles
Feeding on Plants of the Family Vitaceae
in Northeastern North America**

Before using the following key, it is assumed that the host-plants have been correctly identified. Although *Altica litigata* Fall does not feed on Vitaceae, it has been added to the key because it is externally very similar to *A. woodsi* Isely.

1. Pronotal transverse groove weakly impressed, not very distinct; host-plants not in the family Vitaceae (species not treated here) 3'
- 1'. Pronotal groove deeply impressed and distinct throughout (Figure 1); host-plants usually in the family Vitaceae 2
2. Size larger, usually over 4 mm long, body usually plumper (length/width body ratio on average less than 1.8), and colour usually dark metallic blue (Figure 1a).
..... *A. chalybea* Illiger
- 2'. Size smaller, usually less than 4 mm long, body usually slender (length/width body ratio on average more than 1.8), and colour usually blue-green or blue with green reflections (Figure 1b) 3
3. Male with tip of the aedeagus triangular and slightly nipple-shaped in the middle, ventral carina and longitudinal ridges well developed (Figure 2b); female with tip of the styli narrower and longer (Figure 3a); host-plants: *Vitis* spp. and *Parthenocissus* spp.
..... *A. woodsi* Isely
- 3'. Male with tip of the aedeagus lanceolate, ventral carina and longitudinal ridges not visible; female with tip of the styli proportionally shorter and broader; host-plants: *Ludwigia* spp., *Oenothera* spp. *A. litigata* Fall

**Clé d'identification des Altises du genre *Altica*
inféodées aux plantes de la famille des Vitaceae
dans le Nord-Est américain**

La clé suivante fonctionnera à la condition que les plantes-hôtes aient d'abord été identifiées correctement. *Altica litigata* Fall, qui n'est pas inféodée aux Vitaceae, a néanmoins été ajoutée à la clé parce que cette espèce est très proche d'*A. woodsi* Isely.

1. Sillon transversal du pronotum peu profond, pas très distinct; plantes-hôtes n'appartenant pas à la famille des Vitaceae (espèces non traitées ici) 3'
- 1'. Sillon transversal du pronotum profond et distinct sur toute sa longueur (figure 1); plantes-hôtes appartenant surtout à la famille des Vitaceae 2
2. Taille plus grande, habituellement plus de 4 mm, corps plus dodu (ratio longueur/largeur en moyenne moins de 1,8), et couleur en général bleu métallique foncé (figure 1a)
..... *A. chalybea* Illiger
- 2'. Taille plus petite, habituellement moins de 4 mm, corps plus allongé (ratio longueur/largeur en moyenne plus de 1,8) et couleur en général bleu-vert ou bleu avec des reflets verts (figure 1b) 3
3. Chez le mâle, bout de l'édéage triangulaire et légèrement mamelonné au milieu, carène ventrale et crêtes longitudinales très bien développées (figure 2b); chez la femelle, bout des styles plus étroit et plus long (figure 3a); plantes-hôtes: *Vitis* spp. et *Parthenocissus* spp.
..... *A. woodsi* Isely
- 3'. Chez le mâle, bout de l'édéage lancéolé, carène ventrale et crêtes longitudinales invisibles; chez la femelle, bout des styles proportionnellement plus large et plus court; plantes-hôtes: *Ludwigia* spp. et *Oenothera* spp. *A. litigata* Fall

1. *Altica chalybea* Illiger, 1807

Haltica chalybea Illiger 1807: 115 (original description); Harris 1833: 581 (list of Massachusetts animals); Melsheimer 1853: 121 (catalogue of United States Coleoptera); Fitch 1859a [1856]: 84 (annual report on insect pests of New York); Fitch 1859a [1858]: 63 (annual report on insect pests of New York); Fitch 1859b: 171 (answer to grower's question on grape pests); Larrowe 1862: 383 (answer to grower's question); Worden 1862: 350 (infestation in Oswego Co., New York); Walsh and Riley 1868: 27 (mentioned as pest); Riley 1870a: 309 (identification of grape pests); Riley 1870b: 327 (biology); Gott 1878: 45 (biology of fruit pests); Gott 1879: 58 (insect monitoring); Riley 1880: 183 (biology and control); Riley 1881: 53 (reference to *Graptodera*); Couper 1883: 219 (Québec fauna); Saunders 1883: 190, 277; 1889: 190, 277; 1900: 190, 277 (insects injurious to fruits); Harrington 1884: 82 (survey of Ottawa [Ontario] Coleoptera); Fletcher 1885: 26 (Ontario insect pest monitoring); Saunders 1885: 17 (annual address on various insects); Lintner 1888: 96 (comparison with *Altica bimarginata*); Osborn 1888: 162 (monitoring Iowa insect pests); Horn 1889: 220 (taxonomy of North American species); Riley 1889: 221 (compared to *Altica woodsi* [erroneously as *A. ignita*]); Lintner 1890: 188 (NY insect pests); Lintner 1891: 332, 353 (NY insect pests); Neal 1890: 11 (biological notes); Smith 1890: 225 (list of New Jersey insects); Schwarz 1892: 182 (Eastern United States fauna); Hamilton 1895: 340 (catalogue of Pennsylvania Coleoptera); Marlatt 1896: 395 (grape insect pests); Slingerland 1898: 189 (biology in New York); Blatchley 1896: 437 (winter fauna in Indiana); Lowe 1898: 263 (biology in New York); Lugger 1899: 241 (biology of Minnesota injurious insects); Felt 1900a: 555, 563, 564, 570, 573, 601 (grape pests monitoring in New York); Felt 1900b: 15 (injurious and beneficial insects in New York); Smith 1900: 312 (list of New Jersey insects); Felt 1901: 1005 (grape pests monitoring in New York); Felt 1902: 838 (grape pests monitoring in New York); Thomas 1906: 197 (fruit destructive insects); Bethune 1907: 35 (as *Haitica* (*sic*) *chalybea*, fruit-tree pests in Ontario);

Quaintance and Shear 1907: 23 (biology of grape insect pests); Hartzell 1910: 485 (biology in New York); Blatchley 1910: 1201 (Indiana fauna); Smith 1910: 552 (list of New Jersey insects); Wickham 1911: 32 (list of Iowa Coleoptera); Gibson 1913: 6 (flea beetle control in Canada); Reh 1913: 523 (handbook on beetle pests); Caesar 1914: 81 (Ontario grape pests); Slingerland and Crosby 1914: 403 (biology); Hartzell 1915: 201 (biology in New York); Hewitt 1915: 26 (control experiments); Caesar 1916: 31 (insects of the season in Ontario); Chagnon 1917: 243 (checklist of Québec Coleoptera); Duckett 1920: 138 (Maryland fauna); Fall 1920: 102 (taxonomic comparisons); Isely 1920: 4 (biology in Washington, D.C.); Leng 1920: 300 (catalogue of North American Coleoptera); Quaintance and Shear 1921: 26 (insect grape enemies); Cooper 1922: 388 (pests of Arkansas commercial grape); Quaintance and Shear 1922: 239 (insect grape enemies); Blatchley 1924: 20 (Florida fauna); Hartzell 1924:82 (grape insects of New York); AAEE 1925: 526 (checklist of common names); Ross and Caesar 1925: (insects of the season in Ontario); Eyer and McCubbin 1926: 12 (grape insects of Pennsylvania); Hatch and Ortenburger 1926: 10 (list of Oklahoma Chrysomelidae); Ross 1926b:188 (Niagara Peninsula grape insects); Britton 1927: 439 (summary on Connecticut insect pests); Britton 1928: 675 (Connecticut insect pests); Gibson 1928: 26 (flower and garden insect pests); Leonard 1928: 477 (New York insect checklist); Zappe 1928: 729 (Connecticut fruit pests); Dean 1930: 140 (grape pests in Kansas); Zappe 1930: 609 (summary of Connecticut fruit insects); Gibson 1934a: 30 (garden insects in Canada), Gibson 1934b: 32 (garden insect pests in Canada); Brimley 1938: 228 (list of North Carolina insects); Chagnon 1938: 163 (Québec fauna); Chagnon 1940: 316 (Québec fauna); Heikertinger and Csiki 1940: 237 (world catalogue); Peairs 1941: 322 (handbook on insect pests); Löding 1945: 134 (catalogue of Alabama Coleoptera); Blunck 1954: 325 (handbook of phytophagous beetles); Chagnon and Robert 1962: 316, 408 (Québec fauna); Taschenberg and Riedl 1985: 1 (grape pests in Northeastern North America); Syme and Nystrom 1988: 10 (Ontario forest insects).

Chrysomela vitivora Thomas 1834: 113 (original description); synonymy by Harris *vide* Herrick (1835: 420), quoted by Slingerland (1898: 213).

Galleruca janthina J.E. LeConte 1824: 173 (original description); Horn 1893: 132 (synonymy).

Graptodera chalybea (Illiger): Melsheimer 1853: 121 (Catalogue of the United States Coleoptera); Couper 1855: 326 (list of Canadian Coleoptera); Provancher 1877: 676 (Québec fauna); Comstock 1880: 213 (entomologist's report, United States, biology); Couper 1883: 219 (listed for Québec); Riley 1881: 53 (generic transfer); Harrington 1882a: 25 (pest monitoring); Harrington 1882b: 60 (pest monitoring); Bethune 1893: 10 (annual address on pests); Saunders 1883: 277; 1884: 207; 1889: 277; 1900: 277 (annual address); Bethune 1898: 31 (injuries in Ontario); McMillan 1888: 42 (biology in Nebraska); Townsend 1891: 7 (control of grape pests in New Mexico).

Graptodera vitivora Bell 1880: 66c (*nec* Thomas 1834: 113) (faunal survey; misidentification of *A. bimarginata* Say).

Altica chalybea Illiger: Britton 1920:278 (checklist of Connecticut insects); Herrick 1925: 175 (manual on injurious insects); Britton 1926: 221 (monitoring Connecticut insect pests); Caesar and Ross 1926: 14 (insects of the season in Ontario); Caesar 1927 (grape insects of Ontario); Muesebeck 1942: 87 (insect common names); SPPQ 1947: 8 (insect common names); Ross and Armstrong 1949: 1 (biology and control in Ontario); SPPQ 1952: 8 (insect common names); Wilcox 1954: 446 (Ohio fauna); MacNay 1956: 116 (insect infestations in Canada); SPPQ 1964: 9 (insect common names); Forsythe and Still 1969: 35 (Ohio grape insect pests); Balsbaugh and Hays 1972: 148 (Alabama fauna); Wilcox 1975: 110 (checklist of North American species); Benoit 1975: 25 (Canadian insect common names); Campbell *et al.* 1989: 68 (biology of Canada beetle pests to crops); Benoit 1985: 10 (Canada insect common names); Kirk 1969: 96 (South Carolina beetle list, Coastal Plain); Kirk 1970: 72 (South Carolina beetle list, Piedmont); Still and Rings 1973: 8 (Ohio grape pests); Sutherland 1978: 19 (insect common names); Wilcox 1979: 25 (host-plants);

Werner 1982: 19 (insect common names); Wilcox 1983: 110 (catalogue of North American Chrysomelidae); Taschenberg and Riedl 1985: 2 (insect identification sheet); Syme and Nystrom 1988: 10 (Ontario forest insects); Borror *et al.* 1989: 460 (general textbook on insects); Stoetzel 1989: 71 (insect common names); Laplante *et al.* 1991: 99 (checklist of Québec beetles); LeSage 1991: 301 (Canadian fauna); Belton and Eidt 1996: 4 (Canadian insect common names) Dearborn and Donahue 1993: 67 (survey of Maine forest insects); Weigle and Kovach 1995: Sheet 6 (grape IPM in the Northeast); Downie and Arnett 1996: 1374 (Northeast fauna); Bosik 1997: 31 (insect common names); Staines and Staines 1998: 239 (survey of Plummers Island [Maryland] Chrysomelidae); Clark 2000: 32 (annotated list of West Virginia Chrysomelidae); Lasnier *et al.* 2001: 4 (Web site on Québec grape insect pests).

Altica oleracea Melsheimer 1806: 22, *nec oleracea* Linné 1758: 372 (misidentification *vide* Schwarz 1895: 136).

“Grape vine flea-beetle” or “grape flea-beetle”: Harris 1854: 11 (report on grape pests); Lowe 1898: 263 (life history in Geneva, New York); Gott 1879: 58 (annual insect registry in Ontario); Fletcher 1884: 7 (Ontario insect pests); Ross 1926a (Niagara Peninsula grape insects); MacNay 1955: 80 (insect infestations in Ontario); Still and Rings 1965: 18 (grape insect pests); McGrew and Still 1968:17, 1979: 19 (grape pest control in Eastern United States).

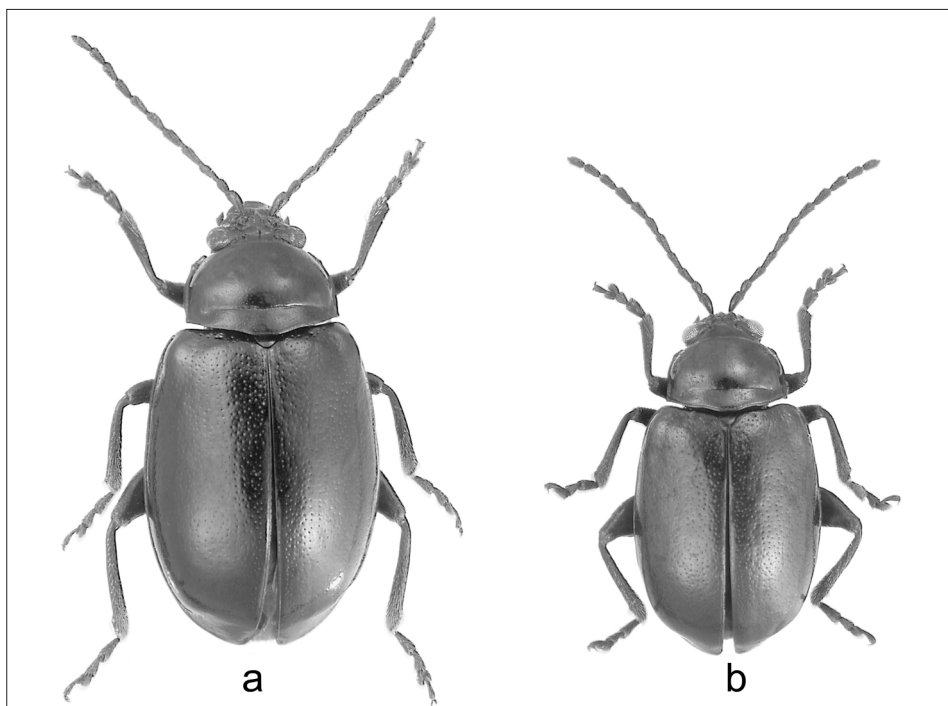


FIGURE 1. Habitus of adult, dorsal view. a, *Altica chalybea*; b, *A. woodsi*.

Etymology. The species name is derived from the Latin adjective *chalybeius*, meaning “made of steel”, in reference to the metallic blue colour of the body. However, three other variant spellings also exist according to Lorenz (1998): *chalibaeus*, *chalybaeus*, and *chalybe-us*, *-a*, *um*. Such variants are deemed to be identical according to the Code (ICZN 2000, Article 58.1).

I chose to follow Heikertinger and Csiki (1940) and used *chalybaea*, when I prepared the checklist of the Chrysomelidae of Canada (LeSage 1991), but did not notice the slight difference in spelling with that of the original description (*chalybea*). Although both variants are valid and equivalent, I will use the original spelling in the future.

Diagnosis. Colour metallic blue, shape oval, with a body length/width ratio on average less than 1.8, and pronotum with a deep transverse groove (Figure 1a).

In the male, tip of aedeagus triangular and nipple-shaped in the middle (Figure 4); lateral and ventral wrinkles oblique and fused together, ventral ridges short, 1/5 length of aedeagus (Figure 4b).

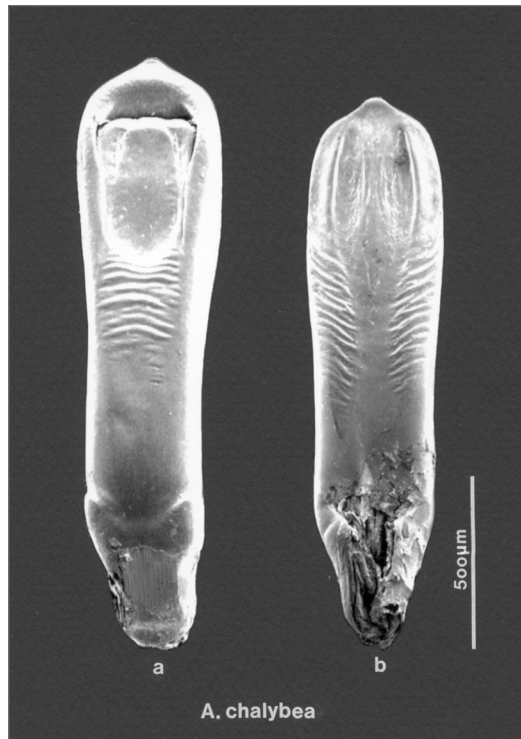


FIGURE 4. Aedeagus of *Altica chalybea*: a, dorsal view; b, ventral view.

In the female, receptacle of spermatheca almost cylindrical; basal portion of the spermathecal duct usually long, and median portion coiled into two loops (Figs. 5a-d); styli fused together for 4/5 their length, with their inner margins acutely diverging at apex (Figure 5a).

Host-plants restricted to the genera *Vitis* and *Parthenocissus* in the family Vitaceae (grape family).

Traits distinctifs. Corps bleu métallique, ovale, avec un ratio longueur/largeur, inférieur à 1,8, en moyenne, et un pronotum à sillon transverse profond (Figure 1a).

Chez le mâle, bout de l'édéage triangulaire et mammelonné au milieu (Figure 4); plis latéraux et ventraux obliques et fusionnés ensemble; arêtes ventrales courtes, 1/5 de la longueur de l'édéage (Figure 2b).

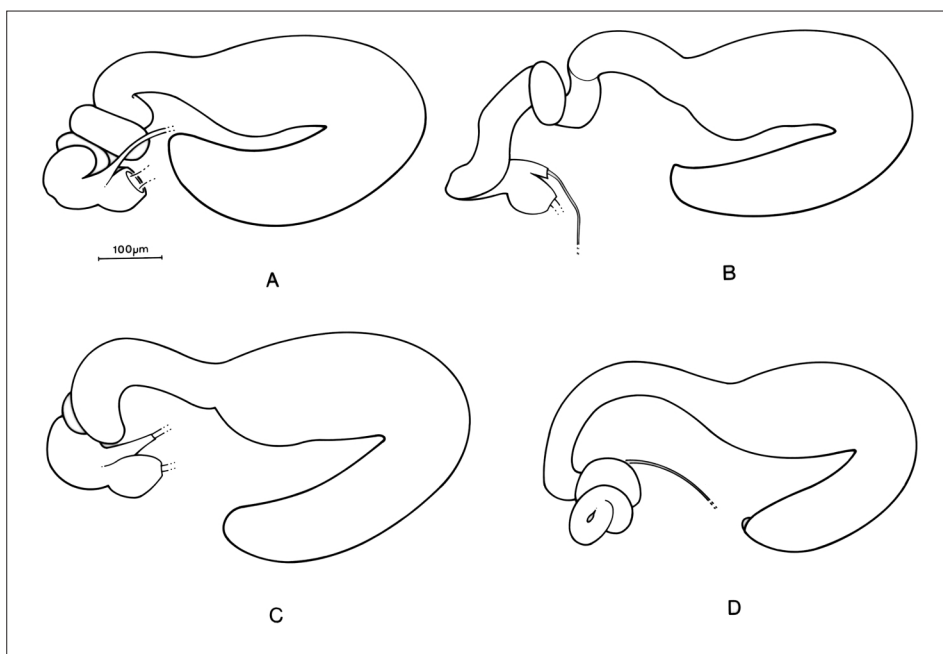


FIGURE 5. Variations of the spermatheca in *Altica chalybea*: a-d.

Chez la femelle, réceptacle de la spermathèque presque cylindrique; portion basale du canal spermathéal allongée, portion médiane à two boucles Figure 5a-d); styles fusionnés sur 4/5 de leur longueur, leurs marges internes écartées à angle aigüe Figure 5a).

Plantes-hôtes restreintes aux genres *Vitis* et *Parthenocissus* de la famille des Vitaceae.

Description. **BODY.** Medium-sized species, 3-5 mm long, distinctly ovoid with body length/width ratio usually less than 1.8 (Figure 1a) (Table I).

HEAD. *Antennae* moderately long about half length of body, proportionately longer in males than in females (Table I); antennomeres 3 and 4 subequal in length, but both distinctly longer than 2. *Frontal carina* moderately sharp, very finely punctulate, ending in middle of frontal tubercles. *Frontal tubercles* smooth, more or less well-defined posteriorly by frontal grooves; median frontal groove, between tubercles, moderately long (95% of specimens examined, $n = 20$), rarely not visible (5%). *Vertex* smooth on disc, with few coarse punctures behind eyes. *Eyes* separated by 2.5 times their diameter, not prominent. *Postocular macrochaetae*: 1. *Labral setae*: 6. *Mandibles* with outer tooth small (Figure 6c) or lacking (Figure 6b), median tooth of moderate size, inner tooth with indentation at base; cutting edge not produced at apex.

THORAX. *Pronotum* quadrate, slightly narrower at apex than at base (Figure 1a). *Anterior angles* of pronotum not prominent, obliquely truncate. *Transverse groove* of pronotum deep throughout. *Punctuation* of pronotum fine and moderately dense. *Microsculpture* of pronotum apparently absent at low magnification, but weakly impressed and distinct. *Legs* of same colour as body. *Tarsal claws* appendiculate, moderately bent.

ELYTRA. *Umbones* moderately prominent and defined on inner side by small depression. *Elytral costa* absent. *Punctuation* moderately dense, coarser than that of pronotum, and slightly finer at apex than at base. *Microsculpture* weakly impressed but distinct.

TABLE I. Measurements of body, antennae and pronotum in *Altica chalybaea*.

	Minimum	Maximum	Mean (<i>n</i> =10)
Male			
Body length (mm)	2.9	4.7	4.3
Body width (mm)	2.1	2.6	2.5
Body length/ width ratio	1.39	1.90	1.76
Antenna length (μm)	220	290	269
Antenna/ body ratio	0.58	0.77	0.63
Pronotum width (μm)	136	177	157
Pronotum length (μm)	88	106	101
Pronotum width/ length ratio	1.36	1.67	1.55
Female			
Body length (mm)	4.45	5.3	4.8
Body width (mm)	2.6	2.9	2.7
Body length/ width ratio	1.67	1.94	1.77
Antenna length (μm)	265	290	274
Antenna/ body ratio	0.53	0.61	0.57
Pronotum width (μm)	160	182	170
Pronotum length (μm)	96	110	105
Pronotum width/ length ratio	1.55	1.73	1.62

SEXUAL DIMORPHISM. (Table I) *Body* slightly more elongate in male than in female. *Antennae* proportionately longer in male than in female. *First tarsomeres* of front legs distinctly broader in male than in female.

MALE GENITALIA. (Table II) *Median lobe* of aedeagus slightly broadened in apical third in dorsal view (Figure 4a); *tip* triangular, nipple-shaped in middle; *dorsal undulations* distributed on 1/3 length of aedeagus; *ventral longitudinal ridges* not much elevated, short, not exceeding 1/5 length of aedeagus; *lateral* and *ventral wrinkles* oblique and fused together (Figure 4b).

FEMALE GENITALIA. (Table II) *Receptacle* of spermatheca almost cylindrical, slightly broader at base (Figure 5); *spermathecal pump* cylindrical, extending little beyond base of receptacle; *apical process* usually (95% of specimens examined, *n* = 20) absent (Figures 5a-c), or small (Figure 5d); *spermathecal valve* moderately developed; basal portion of *spermathecal duct* varying from short (Figures. 5a), to moderately long (Figures. 5b, 5c), to long (Figure 5d); median portion coiled into 2 loops; *styli* fused together on 4/5 their length with inner margins acutely diverging at apex (Figure 6a).

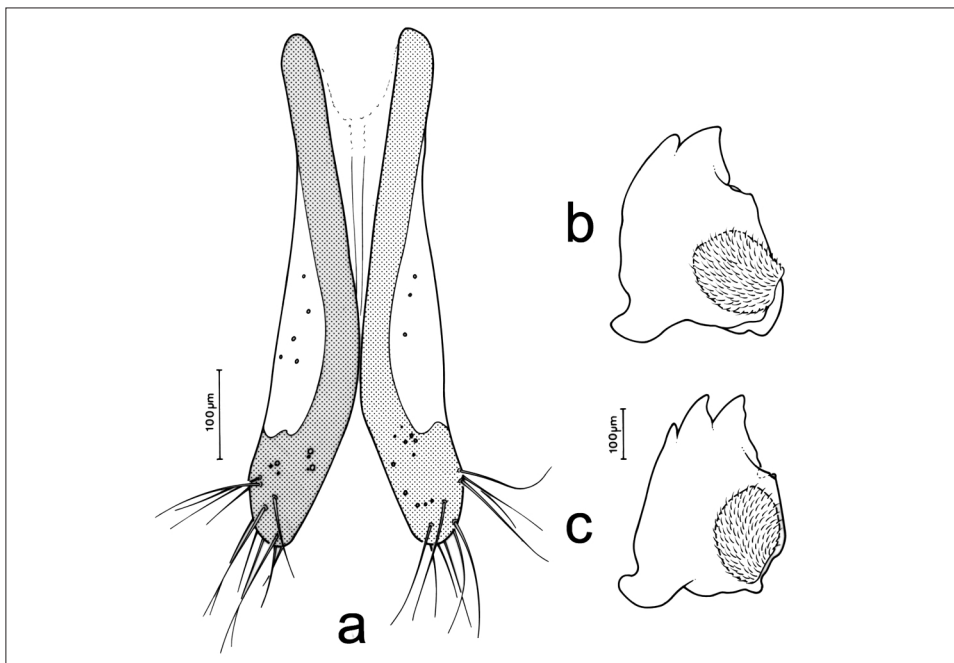
Remarks. Although *Altica chalybea* appears plumper than most species of the genus, this character is quite variable (Table I), and consequently, the identification should be confirmed by examining the genitalia.

With regards to size, Floridian specimens are often larger than average, and, in addition, individuals are sometimes entirely purple instead of blue; on the other hand, their genitalia are indistinguishable from those of northeastern individuals. This larger size and different colour might be significant enough to justify the creation of a distinct subspecies, but more material is needed to measure the extent and value of these variations.

TABLE II. Measurements of male and female genitalia in *Altica chalybea*

	Minimum	Maximum	Mean ($n=10$)
Male			
Aedeagus length (μm)	160	176	168
Ventral oblique wrinkles	14	21	19
Female			
Spermatheca length (μm)	288	333	310
Length of styli (μm)	425	538	480
Apical setae on styli	10	15	12
Sensilla on styli	8	16	12

In the field, *Altica chalybea* and *A. woodsi* are often found simultaneously on the same host-plant. In these circumstances, most individuals can be readily recognized with the naked eye by their size and colouration, those of *A. chalybea* being larger and deep blue whereas those of *A. woodsi* are smaller and blue-green.

FIGURE 6. *Altica chalybea*: a, styli; b-c, mandible.

Type material.

Haltica chalybea Illiger, 1807.

The type series of *Haltica chalybea* is preserved in the A.S. Knoch Collection in the Museum für Naturkunde der Humbolt-Universität zu Berlin in Germany. It consists of six specimens that have been discussed and lectotypes designated by LeSage (2000). The type locality is Francillon, in Georgia (USA).

Galleruca janthina J.E. LeConte, 1824.

P. Perkins (pers. comm.), curator of the MCZ entomological collection where J.L. LeConte's collection is housed, informed me that no type specimens could be found. According to my colleague Yves Bousquet, the collection of J.E. LeConte (father) is probably lost. However, since, LeConte's original description is sufficiently detailed, and the colour plate good enough to allow a reliable determination of the species (J.E. LeConte 1824: 173; plate XI, Figure 16), there is no need to designate a neotype. I follow here the recent recommendations (75.2) of the Code (ICZN 1999): "A neotype is not to be designated as an end in itself, or as a matter of curatorial routine, and any such neotype designation is invalid. If an author designates a neotype for *Xus albus* Smith, a species about whose identity there is no doubt and which is not involved in any complex zoological problem at the time at which it was designated, the purported "neotype" has no name-bearing status".

Chrysomela vitivora Thomas, 1834.

The types, if they exist, could not be located. The type locality is not specified by the author, but corresponds very likely to Central New York according to a statement of Comstock (1880: 214). For the same reason as above, there is no need to designate a neotype. In addition, it would be for a synonym.

Literature errors.

— Harris (1854: 11). Under the name "Grape-vine flea-beetle or *Haltica*", Harris included two species. The damages to grape definitely concern *Altica chalybea* but those on alder should be attributed to *A. ambiens alni* Harris. It is impossible to be entirely sure of the identity of these species because no voucher specimens were preserved.

Altica species are largely mono- or oligophagous, and very similar externally. Host-plants like alder or grape are easy to identify, even by people in general. Consequently, I believe that authors have correctly identified the host-plants, but have misidentified the beetles feeding on them. This interpretation also applies to the cases reported below.

— Fitch (1859a [1856]: 84) reported that "this sometimes invades the plum also, as mentioned p. 362, and it also infests the elm and the alder". The species on plum cannot be identified, but elm is the only host of *Altica ulmi* Woods, and *A. ambiens alni* Harris is monophagous on alder (LeSage 1995: 315).

— Fitch (1859a [1858]: 63) stated that "the Grape-vine flea beetle, a very small greenish-blue or purple jumping beetle, ... also inhabit the elm, eating the leaves", very likely concerns *Altica ulmi*, not *A. chalybea*.

— Riley (1870b: 327) claimed that "the grape-vine flea beetle is found in all parts of the United States and in the Canadas, and it habitually feeds on the alder (= *Alnus serrulata*), as well as upon the wild and cultivated Grape-vine". His statement on the distribution is partly wrong since *Altica chalybea* does not occur west of Ontario in Canada, nor in several western states in the United States (Figure 7). The host-plant *Alnus serrulata*, now considered a variety of *Alnus rugosa* (Du Roi) Spreng. *vide* Scoggan (1978: 589), has been recognized as the unique host-plant of *A. ambiens alni* Harris by LeSage (1995: 316), whereas *A. chalybea* is restricted to *Vitis* and *Parthenocissus*.

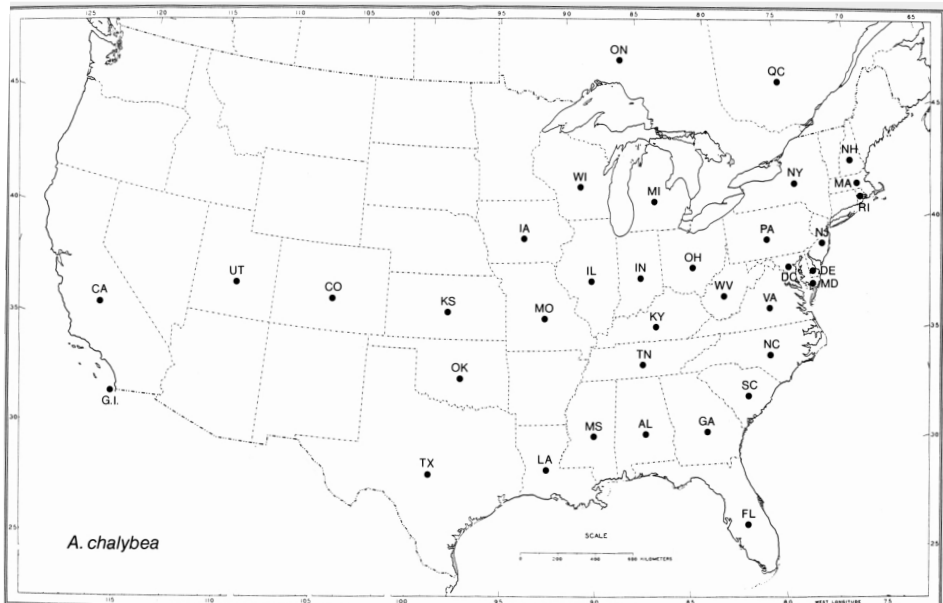


FIGURE 7. Distribution of *Altica chalybea* in North America.

— Saunders (1883: 279; 1889: 279; 1900: 279) reported that “besides the vine, they feed on the Virginia creeper, *Ampelopsis quinquefolia*, and the alder, *Alnus serrulata*, and sometimes eat the leaves of the plum-tree”. This refers to at least three species: *Altica chalybea* for the Virginia creeper, *A. ambiens alni* for the alder, and a third one on plum which cannot be identified.

— McMillan (1888:75) stated that “It seems to have devoted itself largely to seedling apples, pears, quince, and plum trees... In July Mr. S. Barnard, of Table Rock, Secretary of the Horticultural Society, wrote as follows: A small bright green fly, or bug, which can either fly or hop, has damaged apple grafts and yearling trees”. The beetles mentioned were very likely an *Altica*, but probably not *A. chalybea*. At this moment, it is impossible to determine which species might be involved.

— Saunders (1883: 279; 1889: 279; 1900: 279). This author repeated Riley’s observation, cited above, by giving *Alnus serrulata* as a host-plant of *Altica chalybea*. See the comments in the paragraph above.

— Britton (1898: 316) reported that plum leaves were eaten by *Altica chalybea* which, very likely, has been misidentified.

— Lowe (1898: 263) and Britton (1898: 316) attributed to *Altica chalybea* “that the eggs are placed in clusters on the under side of the leaves” whereas it is the typical oviposition habits of *A. woodsii*.

— Felt (1900a: 602) reported “*Haltica chalybea* Ill under bark of elm, 8 Nov.” In my opinion, this statement more likely refers to *Altica ulmi*.

Locality records from specimens examined.

The following list is based on the examination of 1185 specimens.

Rhode Island, Kentucky, Tennessee, Mississippi, Louisiana, Utah and California represent new state records.

The literature records from Maine, Vermont, Arkansas, Minnesota, Nebraska and New Mexico mentioned below have not been corroborated during the course of this study. The first four of these states listed above fit well into the known distribution of the species (Figure 7), but the last two remain questionable until they have been confirmed by voucher specimens.

CANADA

Ontario. *Brant Co.*: Ohsweken (SAMC) 2; *Carleton Co.*: Gloucester (CFIM) 2, Nepean (CFIM) 1, North Gower/ Marlborough Forest (CFIM) 2, Ottawa (MZELU), E Smiths Falls and N Burritts Rapids (CFIM) 1; *Essex Co.*: Point Pelee National Park (SAMC) 1, / Visitor's Centre (SAMC) 9, Windsor (SAMC) 2; *Grey Co.*: Owen Sound (SAMC) 1; *Hastings Co.*: Belleville (SAMC) 1, Georgetown/ Halton Hills (SAMC) 1; *Kent Co.*: Chatham (UBCC) 4; *Lambton Co.*: Arkona (SAMC) 1, Pinery (Provincial) Park (SAMC) 36; *Middlesex Co.*: London (SAMC) 2; *Northumberland Co.*: Dundas (SAMC) 1, Ferris Provincial Park (CFIM) 1, Freeleton (SAMC) 1, Mountsberg (SAMC) 1; *Renfrew Co.*: Long Point (SAMC) 1; *Simcoe Co.*: Simcoe (SAMC) 1; *Waterloo Co.*: Cambridge (SAMC) 1; *Wellington Co.*: Aberfoyle (SAMC) 1, Guelph (SAMC) 15, / University of Guelph (SAMC) 3, / (University of Guelph) Arboretum (SAMC) 1; *York Co.*: Keswick (SAMC) 1, King City (SAMC) 2.

Reported from this province by Harrington (1882a: 25; 1882b: 60; 1884: 82), Saunders (1883: 277; 1884: 207; 1889: 277; 1900: 277), Fletcher (1884: 7; 1885: 26), Bethune (1893: 10; 1898: 33), Hartzell (1910: 497), Gibson (1913: 6), Isely (1920: 2), Ross (1926a: 30; 1926b: 188), Caesar (1927: 44), MacNay (1955: 80; 1956: 116), Syme and Nystrom (1988: 10), LeSage (1991: 318) and Downie and Arnett (1996: 1374).

Québec. *Deux-Montagnes Co.*: Oka (CCC) 1; *Gatineau Co.*: Aylmer (CFIM) 60, Parc de la Gatineau/ Lac des Fées (CFIM) 1, / Lac Brown (CFIM) 2; *Huntingdon Co.*: Havelock (LEM) 1, Saint-Anicet (LEM) 2; *Iberville Co.*: Iberville/ Vignoble Dietrich-Jooss (CFIM) 1; *Île-de-Montréal Co.*: Communauté Urbaine (de Montréal) (USNM) 1; *Lévis Co.*: Saint-Nicolas (CFIM) 1; *Pontiac Co.*: Norway Bay (LEM) 1, (CFIM) 1; *Soulanges Co.*: Coteau-du-Lac (LEM) 1; *Vaudreuil Co.*: Rigaud (LEM) 5, (CFIM) 6.

Reported from this province by Provancher (1877: 676); Couper (1883: 219), Chagnon (1938: 163; 1940: 316), Chagnon and Robert (1962: 316, 408), LeSage (1991: 318), Laplante *et al.* (1991: 99) and Downie and Arnett (1996: 1373).

UNITED STATES

Alabama. *Baldwin Co.*: Oak Pond Branch E of Foley (NDSU) 2; *Dale Co.*: Fort Rucker Military Reserve (RHTC) 7; *Hale Co.*: Payne Lake NE of county (USNM) 1; *Houston Co.*: Chattahoochee State Park (UMMZ) 3, 1 mi. N Wicksburg (RHTC) 3; *Madison Co.*: Huntsville/ Monte Sano State Park (USNM) 1; *Washington Co.*: Calvert (CUIC) 1. Not located: Birmingham (as "B'ham") (FMNH) 1 (several possible counties).

Reported from this state by Löding (1945: 134), Balsbaugh and Hays (1972: 148), Downie and Arnett (1996: 1374).

(**Arkansas**). Reported from this state by Isely (1920: 6), Cooper (1922: 388), but not confirmed here by examined specimens.

California. *San Diego Co.*: Guadeloupe Island (as "Guadlpe Is.") (MCZ) 1.

Colorado. State record only: (USNM) 1; *Denver Co.*: Denver (MCZ) 1.

Reported from this state by Herrick (1925: 175) as “found from Massachusetts to Colorado”.

(Connecticut). Reported from this state by (Thomas 1834: 15) as *Chrysomela vitivora*, Hartzell (1910: 498), Britton (1920: 278; 1926: 221; 1927: 439; 1928: 675), Isely (1920: 6) and Zappe (1928: 729).

District of Columbia. District record only: (USNM) 1, Anacostia (USNM) 1, Washington (USNM) 2, (UMMZ) 1, / Rock Creek Park (USNM) 3.

Reported from this district by Isely (1920: 6).

Delaware. *New Castel Co.*: Newark (UMMZ) 1.

Reported from this state by Hartzell (1910: 497) and Isely (1920: 6).

Florida. State record only: (USNM) 1; *Alachua Co.*: county record only (UMMZ) 1, Chantilly Acres (USNM) 1, Gainesville (NDSU) 2, (UMMZ) 5, (USNM) 1, San Felasco Hammock (UMMZ) 1; *Bradford Co.*: Starks (SMCC) 2; *Charlotte Co.*: Charlotte Harbor (as “ChlrotteH”) (MCZ) 1, Salona (SMCC) 1; *Dade Co.*: county record only (UMMZ) 1, Biscayne (MCZ) 1, 4 mi S Homestead (FAMU) 1; Miami (UMMZ) 1, (USNM) 8, / *Hialeah* (USNM) 1; *Dixie Co.*: Old Town (USNM) 5; *Franklin Co.*: Saint Teresa Beach (FAMU) 1; *Highlands Co.*: Lake Placid/ Archbold Biological Station (RHTC) 5, (USNM) 1; *Holmes Co.*: 0.8 mi. SW Leonia (RHTC) 1; *Indian River Co.*: county record only (UNHC) 1, 2.5 mi. SE Wabasso (RHTC) 2; *Jackson Co.*: county record only (CCC) 1, Florida Caverns State Park (RHTC) 1, near Mariana (SMCC) 1; *Jefferson Co.*: county record only (USNM) 1; *Laluoka Co.*: Lake Okefenokee (as “Lake Oke.”) (PURC) 1; *Leon Co.*: Tallahassee (NDSU) 3, (SMCC) 1; *Liberty Co.*: Torreya State Park (RHTC) 1, (UMMZ) 3; *Marion Co.*: Ocala (RHTC) 3, Ocala National Forest (FAMU) 1; *Monroe Co.*: Key Largo (RHTC) 5, (USNM) 4, North Key Largo (EGRC) 1; *Orange Co.*: Goldenrod (SMCC) 3, Orlando (SMCC) 3, (USNM) 1, / Strickland (USNM) 1; *Palm Beach Co.*: Lake Worth (USNM) 1; *Pinellas Co.*: Belleair (MCZ) 1, Dunedin (CUIC) 6, (PURC) 6, (SMCC) 4; *Sarasota Co.*: county record only (PURC) 1, Laurel (SMCC) 6, / Siesta Beach (SMCC) 3, 2 mi. E Venice (SMCC) 8; *Seminole Co.*: Highway 441 at Seminole/ Lake county line (RHTC) 1, Sanford (USNM) 1; *St. Johns co.*: St. Augustine (MCZ) 3; *St. Lucie Co.*: St. Lucie (USNM) 1; *Suwannee Co.*: 5 mi. N Welborn (SMCC) 2; *Taylor Co.*: 11 mi. SW Steinhatchee (UNHC) 1; *Volusia Co.*: Enterprise (MCZ) 2, (UMMZ) 2, (USNM) 2, / New Smyrna (Beach) (USNM) 2; *Walton Co.*: Highway 185/ 1 mi. SW Holmes Co. (RHTC) 3.

County not specified (several possibilities): Paradise Key (USNM). Not located: “Link Port” (UNHC) 1, “Royal Palm Park” (PURC) 1, “Sunfall” (PURC) 1.

Reported from this state by Horn (1889: 220), Neal (1890: 10) as “Michigan to Florida”, Hartzell (1910: 497), Slingerland and Crosby (1914: 403), Isely (1920: 6), Leng (1920: 300), Herrick (1925: 175) as “south to Florida and New Mexico”, Wilcox (1975: 100), and Downie and Arnett (1996: 1373).

Georgia. *Chatham Co.*: Savannah (MCZ) 1; (UMMZ) 1; *Decatur Co.*: county record only (UMMZ) 1; *Pike Co.*: county record only (USNM) 13.

Not located: Chester Island (CUIC) 1, Georgia State College (CUIC) 1, (USNM) 1.

Reported from this state by Illiger (1807: 115), LeConte (1824: 173) as *Gallerucida janthina*, Comstock (1880: 214) citing Illiger (1807: 115), Hartzell (1910: 497), Isely (1920: 6) and LeSage (2000: 233).

Illinois. *Cook Co.*: Cicero (USNM) 5, Evanston (FMNH) 2, La Grange (USNM) 2, Riverside (UMMZ) 2, (USNM) 3; *Mason Co.*: Havana (USNM) 1; *St. Louis Co.*: county record only (UMMZ) 1; *Vermilion Co.*: Danville (SMCC) 2.

Reported from this state by Blatchley (1910: 1201), Hartzell (1910: 497) and Isely (1920: 6).

Indiana. *Allen Co.*: county record only (PURC) 1; *Clark Co.*: county record only (PURC) 1, State Forest (PURC) 1; *Crawford Co.*: county record only (PURC) 2; *Davies Co.*: county record only (PURC) 1; *Johnson Co.*: county record only (PURC) 1; *Kosciusko Co.*: county record only

(PURC) 1; *Laporte Co.*: county record only (PURC) 1; *Marion Co.*: county record only (PURC) 2; *Montgomery Co.*: Shades State Park (EGRC) 1; *Orange Co.*: county record only (PURC) 1; *Parke Co.*: county record only (LEM) 7; *Perry Co.*: county record only (PURC) 1; *Posey Co.*: county record only (PURC) 2, New Harmony (FMNH) 4; *Putnam Co.*: county record only (PURC) 1, Lieber State Park, 30 mi. W Indianapolis (CUIC) 14; *Starke Co.*: county record only (PURC) 2; *Tippecanoe Co.*: county record only (PURC) 8, Lafayette (FMNH) 1; *Vigo Co.*: county record only (PURC) 1; *Warren Co.*: county record only (PURC) 2.

Not located: Hickory Creek (FMNH) 1.

Reported from this state by Hartzell (1910: 497), Isely (1920: 6) and Blatchley (1910: 1201).

Iowa. *Henry Co.*: 5 mi. SW Mount Pleasant (TAMU) 1; *Johnson Co.*: Iowa City (USNM) 2; *Story Co.*: Ames/ Iowa State University (as "ISU") main campus (UMMZ) 1.

Reported from this state by Osborn (1888: 162), Wickham (1911: 32), Hartzell (1910: 497) and Isely (1920: 6).

Kansas. *Atchison Co.*: county record only (SEM) 1; *Douglas Co.*: county record only (SEM) 2, 16.5 mi. SE Lawrence (SEM) 1; *Riley Co.*: Popenoe (WFBM) 1.

Reported from this state by Quaintance and Shear (1907: 24; 1921: 27), Slingerland and Crosby (1914: 403), Isely (1920: 6) and Dean (1930: 140).

Kentucky. *Carter Co.*: Horton Flat near Grayson Lake (SMCC) 1; *Franklin Co.*: Frankfort (USNM) 1; *Henderson Co.*: Henderson (UMMZ) 3; *Menifee Co.*: Frenchburg (SMCC) 1, Red River/ Highway 77 (SMCC) 1; *Trigg Co.*: Golden Pond land between the Lake Recreation Area (CFIM) 1.

Louisiana. *East Baton Rouge Co.*: Baton Rouge (UMMZ) 1, (USNM) 2; *St. Landry Co.*: Opelousas (USNM) 1.

(Maine). Reported from this state by Dearborn and Donahue (1993: 67), but not confirmed here by specimens examined.

Maryland. *Baltimore Co.*: Stevenson (WFBM) 1; *Calvert Co.*: Chesapeake Beach (USNM) 12, Plum Point (USNM) 4; *Howard Co.*: Long Corner (USNM) 1; *Kent Co.*: Massey (CFIM) 3; *Montgomery co.*: county record only (USNM) 1, Cabin John Bridge (as "Cab.JohnBr") (USNM) 1, Glen Echo (USNM) 22, Great Falls (USNM) 4, Plummers Island (USNM) 5; *Prince George's Co.*: Beltsville (USNM) 1, Bowie (USNM) 2, College Park (UCR) 1, Largo (USNM) 2, Riverdale (USNM) 1; *St. Mary's Co.*: Wailes Bluff (USNM) 1.

Reported from this state by Hartzell (1910: 497), Isely (1920: 6), Staines and Staines (1998: 239) and Downie and Arnett (1996: 1373).

Massachusetts. State record only (MCZ) 2; *Bristol Co.*: Berkley (MCZ) 1, Fall River (MCZ) 1; *Essex Co.*: Newburyport (UNHC) 1; *Hampden Co.*: Montgomery (USNM) 1; *Hampshire Co.*: Cummington (USNM) 1; *Middlesex Co.*: Bedford (UMMZ) 2, Cambridge (as "Cambr.") (USNM) 1; *Norfolk Co.*: Stoughton (USNM) 1; *Plymouth Co.*: county record only (MCZ) 1; *Worcester Co.*: Southborough (USNM) 1.

Reported from this state by Harris (1833: 581, 1841: 104), Hartzell (1910: 497), Slingerland and Crosby (1914: 403), Isely (1920: 6), and Herrick (1925: 175) as "found from Massachusetts to Colorado".

Michigan. *Genesee Co.*: county record only (UMMZ) 1; *Gladwin Co.*: county record only (UMMZ) 1; *Huron Co.*: Port Crescent State Park (UMMZ) 1; *Ingham Co.*: county record only (UMMZ) 2, East Lansing (NDSU) 3, (East Lansing)/ Agriculture State College (as "Ag. Coll. Mich.") (CUIC) 1, (NDSU) 1, (USNM) 1; *Jackson Co.*: Waterloo State Recreation Area (UMMZ) 4; *Kalkaska Co.*: county record only (UMMZ) 1; *Livingston Co.*: E.S. George Reserve (UMMZ) 4; *Oakland Co.*: county record only (UMMZ) 5, Bloomfield (UMMZ) 2, Lake Orion (UMMZ) 1,

Milford (UMMZ) 1, Southfield (UMMZ) 2; *Washtenaw Co.*: county record only (UMMZ) 2, Ann Arbor (UMMZ) 6, Matthaei Botanical Gardens (UMMZ) 1, Salem Township (UMMZ) 1, Stony Creek (UMMZ) 1; *Wayne Co.*: Detroit (UMMZ) 1.

Reported from this state by Horn (1889: 220) as “Michigan to Florida”, Hartzell (1910: 497) and Isely (1920: 6).

(Minnesota). Reported from this state by Quaintance and Shear (1907: 24), Hartzell (1910: 497), and Isely (1920: 6), but not confirmed here by specimens examined.

Reported from this state by Quaintance and Shear (1921: 27).

Missouri. *Boone Co.*: Columbia (SMCC) 1, (USNM) 5; *Randolph Co.*: 1 mi. E Moberly (CUIC) 49.

Reported from this state by Riley (1870a: 309), Hartzell (1910: 497) and Isely (1920: 6).

Mississippi. *Desoto Co.*: Horn Island (CUIC) 6; *Harrison Co.*: Gulfport (USNM) 1; *Hinds Co.*: Jackson (NDSU) 1; *Lafayette Co.*: Oxford (NDSU) 1; *Lauderdale Co.*: Meridian (USNM) 2; *Oktibbeha Co.*: Agriculture College of Mississippi (CUIC) 1.

(Nebraska). Reported from this state by McMillan (1888:74), Quaintance and Shear (1907: 24; 1921: 27), Hartzell (1910: 497) and Isely (1920: 6), but not confirmed here by specimens examined.

New Hampshire. *Rockingham Co.*: Hampton (UNHC) 1, Raymond (UNHC) 1, Seabrook (UNHC) 1; *Strafford Co.*: Durham (UNHC) 5; *Sullivan Co.*: Claremont (UNHC) 1.

New Jersey. State record only (USNM) 1; *Atlantic Co.*: Buena (MCZ) 3; *Cape May Co.*: Anglesea (USNM) 1; *Morris Co.*: Lake Hopatcong (as “Hopakong”) FMNH) 1; *Ocean Co.*: Lakehurst (USNM) 1; *Orange Co.*: Greenwood Lake (USNM) 1; *Warren Co.*: Mountain Lake (FMNH) 1.

Not located: Crystal Lake (CUIC) 1 (county not specified, several possibilities).

Reported from this state by Smith (1890: 225; 1900: 312; 1910: 352), Hartzell (1910: 497) and Isely (1920: 6).

(New Mexico). Reported from this state by Townsend (1891: 7), Hartzell (1910: 497), Slingerland and Crosby (1914: 403) and Isely (1920: 6).

Reported from this state by Herrick (1925: 175) as “south to Florida to New Mexico”.

New York. State record only: (PURC) 1, (USNM) 1; *Allegany Co.*: Belmont (NDSU) 1; *Erie Co.*: Angola (USNM) 1; *Essex Co.*: Whiteface Mountain (EGRC) 3; *Franklin Co.*: Orient/ Long Island (as “L.I.”) (CUIC) 2; *Genesee Co.*: county record only (USNM) 1, Batavia (USNM) 65; *Niagara Co.*: Olcott (CUIC) 8, (USNM) 2; *Orange Co.*: West Point (USNM) 4; *Queens Co.*: Long Island (as “LI”)/ Rockaway Beach (USNM) 1; *Rockland Co.*: Bear Mountain (CUIC) 1, (USNM) 1; *Salem Co.*: Killcohook Wildlife Refuge (SMCC) 1; *Seneca Co.*: Willard (USNM) 1; *Suffolk Co.*: Long Island Aqueduct (as “Aqued’t”) (USNM) 1, Napeaque/ Long Island (as “LI”) (CUIC) 1; *Tompkins Co.*: Ithaca (CUIC) 4, (FAMU) 1, (UCR) 2, (UNHC) 1, (WFBM) 2, (Cornell University) Campus (CUIC) 1, (USNM) 1, / Taughanac (CUIC) 4.

Reported from this state by Thomas (1834: 113) as *Chrysomela vitivora*, LeConte (1824: 173) as *Galleruca janthina*, Fitch (1859a [1856]: 84; 1859b: 171), Comstock (1880: 214), Lintner (1890: 188; 1891: 332, 353; 1893: 298), Lowe (1898: 263), Felt (1900a: 555, 563, 564, 570, 573; 1900b: 15; 1901: 1005; 1902: 838), Hartzell (1910: 497; 1924: 82), Reh (1913: 524), Slingerland and Crosby (1914: 403), Isely (1920: 6), Leonard (1928: 477) and Downie and Arnett (1996: 1374).

North Carolina. State record only (MCZ) 4, (USNM) 1; *Buncombe Co.*: Asheville (USNM) 1; *Douglas Co.*: county record only (SEM) 1; *Guilford Co.*: (Greensboro) North Carolina Agricultural and Technical State University (as “NC Dept. Agr. Entomological Cat. No. 282”) (UCR) 1; *Haywood Co.*: Hazelwood/ Little Mountain (as “Lt.Mtn”) (USNM) 1; *Jackson Co.*: Balsam (USNM) 2; *Nash*

Co.: Rocky Mount (UCR) 1; *Pitt Co.*: Greenville (SEM) 1; *Swain Co.*: Indian Gap (USNM) 1; *Union Co.*: county record only (NDSU) 2; *Wake Co.*: Raleigh (UCR) 1, 3 mi. N. Wake Forest (USNM) 1.

Reported from this state by Hartzell (1910: 497), Isely (1920: 6), Brimley (1938: 228) and Downie and Arnett (1996: 1374).

Ohio. *Butler Co.*: Oxford (CUIC) 2; *Delaware Co.*: at junction Deer Run and Scioto River (SMCC) 1, O'Shaughnessy Reservoir (SMCC) 3; *Franklin Co.*: Columbus (SMCC) 3, (WFBM) 1, / Ohio State University Campus (SMCC) 2, / near Mason Run (SMCC) 1, Mifflin Township near Mock Park (SMCC) 1; *Hocking Co.*: county record only (SMCC) 1, Ash Cave (SMCC) 1; *Montgomery Co.*: Wayne Township (SMCC) 1; *Richland Co.*: Mansfield (SMCC) 2; *Ross Co.*: Chillcothe/ 1 mi. S route 50 at Scioto River (SMCC) 1, Tar Hollow State Forest (SMCC) 2; *Vinton Co.*: Lake Hope (SMCC) 1, Lake Hope State Park (SMCC) 3; *Washington Co.*: Hune Bridge/ 2.5 mi. N Dart (SMCC) 2.

Reported from this state by Hartzell (1910: 497), Isely (1920: 6), Wilcox (1954: 446) and Forsythe and Still (1969: 33).

Oklahoma. *Murray Co.*: 2 mi. S Sulphur (USNM) 1.

Reported from this state by Hatch and Ortenburger (1926: 10).

Pennsylvania. State record only: (USNM) 1; *Allegheny Co.*: county record only (CUIC) 6; Pittsburgh (UMMZ) 1; *Beaver Co.*: Brighton (USNM) 1; *Centre Co.*: First Mountain (as "1st Mt.") (NDSU) 1, State College (USNM) 1; *Chester Co.*: county record only (USNM) 1; *Cumberland Co.*: Camp Hill (as "Camphill") (UMMZ) 2, Enola (UMMZ) 2; *Delaware Co.*: county record only (FMNH) 2; *Erie Co.*: North East (USNM) 1, Presque Isle State Park (CUIC) 17; *Monroe Co.*: county record only (USNM) 3; *Montgomery Co.*: Abington (MCZ) 1, Glenside (USNM) 1, Edge Hill (USNM) 1; *Northumberland Co.*: Elysburg (USNM) 1; *Philadelphia Co.*: Philadelphia (as "Phila.") (USNM) 11; *Pike Co.*: Camp Colang (FMNH) 1; *Washington Co.*: Canonsburg/ Mount Blain (UMMZ) 1; *York Co.*: Frogtown (NDSU) 1.

Reported from this state by Melsheimer (1806: 22) as *Altica oleracea*, Thomas (1834: 113) *sub Chrysomela vittivora*, Comstock (1880: 214, 215), Hartzell (1910: 497), Isely (1920: 6), Eyer and McCubbin (1926), Downie and Arnett (1996: 1374) and LeSage (2000: 233).

Rhode Island. *Kent Co.*: Warwick (UMMZ) 5.

South Carolina. *Charleston Co.*: Island of Palms (MCZ) 1; *Florence Co.*: Florence (NDSU) 1; *Greenville Co.*: Greenville (TAMU) 1; *Horry Co.*: Myrtle Beach (NDSU) 7, (USNM) 2.

Reported from this state by Hamilton (1895: 340), Kirk (1969: 96; 1970: 92) and Downie and Arnett (1996: 1374).

Tennessee. *Coche Co.*: 6 mi. SE Cosby (UNHC) 1; *Davidson Co.*: Nashville (USNM) 1; *Elkhart Co.*: Dunlap (LEM) 1; *Sevier Co.*: Gatlinburg (MZELU) 1.

Texas. State record only: (MCZ) 2, (USNM) 1; *Jefferson Co.*: Sabine Pass (SMCC) 2; *Lavaca Co.*: 10 mi. N Hallettsville (TAMU) 1; *Webb Co.*: county record only (UMMZ) 1.

Not located: Brighton (USNM) 1.

Reported from this state by Horn (1889: 220), Hartzell (1910: 497), Quaintance and Shear (1907: 24; 1921: 26), Isely (1920: 6), Wilcox (1975: 110) and Downie and Arnett (1996: 1373).

Utah. *San Juan Co.*: Monument Valley (USNM) 1.

(Vermont). Reported from this state by Hartzell (1910: 497), and Isely (1920: 6) but not confirmed here by specimens examined.

Virginia. State record only: (USNM) 1; *Arlington Co.*: Glencarlyn (USNM) 1; *Chesapeake Co.*: Lake Drummond (USNM) 4; *Fairfax Co.*: county record only (USNM) 1, Dawson Beach 4 mi. S of Occoquan (USNM) 1, Falls Church (USNM) 3, Vienna (USNM) 1; *Fauquier Co.*: Warrenton (USNM) 1; *Giles Co.*: Jefferson National Forest (USNM) 5; *Hampton Co.*: Fort Monroe (Station)

(USNM) 1; *Lee Co.*: Pennington Gap (MCZ) 2, (USNM) 1; *Nelson Co.*: county record only (USNM) 1; *Shenandoah Co.*: Woodstock (USNM) 1; *Virginia Beach City*: Cape Henry (USNM) 5, Virginia Beach (as "Princess Anne Co.") (USNM) 1; *Westmoreland Co.*: Colonial Beach (USNM) 1.

Reported from this state by Comstock (1880: 215), Isely (1920: 6) and Downie and Arnett (1996: 1374).

West Virginia. *Barbour Co.*: Audra State Park (SMCC) 1; *Berkeley Co.*: county record only (SMCC) 6, Boyds Gap/ North Mountain (SMCC) 1, Potomac Park (SMCC) 1; *Braxton Co.*: Left Fork (of) Holly River near Holly (SMCC) 2; *Cabell Co.*: Green Bottom Wildlife Management Area (SMCC) 1, Huntington (SMCC) 1; *Doddridge Co.*: New Milton (SMCC) 1, 3 mi. E Sherwood (SMCC) 1, Smithburg (SMCC) 1; *Fayette Co.*: Fayette Station (SMCC) 1, Hawks Nest State Park (SMCC) 1, McKendree (SMCC) 1, New River Gorge near Prince (SMCC) 1; *Gilmer Co.*: Cedar Creek State Park (SMCC) 14, Stouts Mills (SMCC) 1, Tumbling Run (SMCC) 1; *Grant Co.*: North Fork of Patterson Creek at Greenland Gap (SMCC) 1; *Hardy Co.*: Old Fields (SMCC) 1; *Harrison Co.*: Clarksburg (SMCC) 1, Dog Run Nature Preserve/ near Salem (SMCC) 3; *Jackson Co.*: Ripley (SMCC) 4, 1 mi. N Ripley Landing (SMCC) 1; *Jefferson Co.*: Shepherdstown (SMCC) 1; *Kanawha Co.*: Guthrie (SMCC) 66, (WVDA) 3, / headwaters of Fisher Branch near Guthrie (SMCC) 1, / 0.5 mi. S Sixmile Branch Kanawha State Forest (SMCC) 12, (WVDA) 2, Lens Creek (SMCC) 2, Sissonville/ Tupper Creek at Spencer Branch (SMCC) 1; *Lewis Co.*: Jane Lew (SMCC) 1; *Lincoln Co.*: Hilbert Public Hunting Area (SMCC) 1; *Marshall Co.*: Glendale (SMCC) 2, Moundsville (SMCC) 2, Mount Olivet (SMCC) 1; *Mason Co.*: Beech Hill (SMCC) 9; *Mineral Co.*: Barnum (SMCC) 1, Keyser (SMCC) 1; *Monongalia Co.*: Blacksville (SMCC) 1, Cheat Neck (SMCC) 1, Core (SMCC) 3, Morgantown (SMCC) 2, / 3.5 mi. NE (SMCC) 1, Stewartstown (SMCC) 1; *Monroe Co.*: 1 mi. W Red Hill (SMCC) 5; *Morgan Co.*: Middle Fork (of) Indian Run (at) Cacapon State Park, (SMCC) 1, 2 mi. SE Hancock (SMCC) 1; *Nicholas Co.*: Gauley River near Peters Junction (SMCC) 1; *Ohio Co.*: 1 mi. SW Clinton (SMCC) 2; *Pendleton Co.*: Judy Gap (SMCC) 1, 1 mi. NW Ruddle (SMCC) 1, 3 mi. NW Ruddle (SMCC) 5, 5 mi. NW Ruddle (SMCC) 4; *Pleasants Co.*: Arvilla (SMCC) 1, Willow Island (SMCC) 1; *Pocahontas Co.*: Marlinton (SMCC) 1; *Preston Co.*: Cranesville Swamp (SMCC) 1; *Putnam Co.*: Hurricane (SMCC) 1, Teays (SMCC) 1; *Raleigh Co.*: Sandstone Falls (in) New River (SMCC) 1; *Roane Co.*: Stutler Run 1.5 mi. N Reedy (SMCC) 3; *Summers Co.*: Sandstone (SMCC) 1; *Taylor Co.*: Grafton (SMCC) 2, Valley Falls State Park (SMCC) 1; *Tyler Co.*: Luzon (SMCC) 1; *Upshur Co.*: 3 mi. E Buckhannon (SMCC) 8; *Wayne Co.*: Shoals (SMCC) 2; *Wetzel Co.*: Anthem (SMCC) 1, Newdale (SMCC) 2, Peabody (SMCC) 5, Pine Grove (SMCC) 1, Vernon (SMCC) 1; *Wirt Co.*: Stutler Run/ 2 mi. S (of) Lucile (SMCC) 1.

Not located: "Eng./ T.Z." (USNM) 1.

Reported from this state by Isely (1920: 6) and Clark (2000: 32).

Wisconsin. *Racine co.*: Kilbournville (as "Kilbourn") (USNM) 1.

Reported from this state by Isely (1920: 6).

Distribution. The distribution of *Altica chalybea* extends from southern Ontario and Québec to Florida and Texas with a western extension into Colorado (Figure 7). Rhode Island, Kentucky, Tennessee, Mississippi, and Louisiana are new state records. The presence of *Altica chalybea* on Guadeloupe Island (California), and Utah, corresponds to an introduction since no native species of *Vitis* or *Parthenocissus* grow naturally there (Gleason 1963: 517-520).

The literature records from Maine, Vermont, Arkansas, Minnesota, Nebraska and New Mexico have not been corroborated during the course of this study but fit well into the known distribution of the species.

Host-plants. The following host-plants, mentioned in the literature for *Altica chalybea*, are considered here either as “true” host-plants when beetles can complete their development on these plants, or “accidental” when the plants were misidentified, the beetles accidentally occurred on these plants, or the errors came from misidentifications of the flea beetles.

a) true host-plants mentioned in the literature:

- Wild grape: see *Vitis* spp.

- Bunch grapes (= either the European *Vitis vitifera* L. or the American *Vitis labrusca* L.): Kirk (1970: 92).

- *Clinton* (= a variety of *Vitis riparia* Michx. *fide* Engelman (1869: 321)): as

“a vineyard of *Clinton* grape which was totally devastated” reported by Slingerland (1898: 194).

- *Concord* (= variety of *Vitis labrusca* L. *fide* Engelman (1869: 321)): as “attacked the *Concord* grape more than any other” by Fletcher (1884: 7), cited by Slingerland (1898: 194); as “the Concord, Salem, Martha and Brighton vines” by Fletcher (1885: 26); as “the only food plants found during five seasons have been the *Concord* grape” by Hartzell (1915: 203); as “prefer the *Concord* during the spring” by Hartzell (1915: 203); as “does not favour thick-leaved sorts like the *Concord*” by Isely (1920: 4).

- Cultivated grape (= *Vitis vitifera* L., variety not specified): Saunders (1871: 108; 1883: 279; 1885: 17; 1889: 279; 1900: 279); Gott (1878: 45; 1879: 58); Slingerland (1898: 194); Lintner (1890: 188; 1891: 332, 353); “as young larvae... on grape” by Lintner (1893: 298); Bethune (1893: 10; 1898: 33); Lowe (1898: 263); Felt (1902: 838); Thomas (1906: 197); Hartzell (1910: 497; 1924: 82); Gibson (1913: 6); Reh (1913: 524); Isely (1920: 4); Quaintance and Shear (1907: 23; 1921: 27); Britton (1926: 221); Ross (1926a: 30; 1926b: 188); Caesar (1927: 44); Eyer and McCubbin (1926: 12); Zappe (1928: 729; 1930: 609).

- *Delaware* (= variety of *Vitis riparia* Michx. *fide* Engelman (1869: 321)): as “the larvae flourishes on thin-leaved varieties like the Delaware” (Isely 1920: 4).

- Muscadine (= *Vitis vulpina* L. *fide* Engelman (1869: 321)); Balsbaugh and Hays (1972: 148). See below.

- *Parthenocissus quinquefolia* (L.) Planch. (Virginia Creeper): Bethune (1893: 10), and Bethune (1898: 33) as *Ampelopsis quinquefolia*; Lugger (1899: 243) as *Ampelopsis quinquefolia*; Saunders (1883: 279; 1889: 279; 1900: 279) as *Ampelopsis quinquefolia*; Thomas (1906: 197); Reh (1913: 524); Isely (1920: 4) as *Pseudera quinquefolia*; Quaintance and Shear (1921: 27); Herrick (1925: 175); Caesar (1927: 44); Gibson (1928: 26; 1934a: 30; 1934b: 32); Zappe (1930: 609); Blunck (1954: 325), Campbell *et al.* (1989: 68).

- Virginia Creeper: see *Parthenocissus quinquefolia*.

- *Vitis* sp.: (Thomas 1834: 113) [as *Chrysomela vitivora*]; as “wild and cultivated grapes” by Harris (1841: 104; 1842: 104; 1852: 114; 1862: 129); Riley (1870b: 327); Saunders (1883: 279; 1889: 279; 1900: 279); as “commonly confined to grape vines, wild or cultivated” by McMillan (1888: 75); Bethune (1893: 10); Marlatt (1896: 396); Lugger (1899: 241); Bethune (1907: 35); Quaintance and Shear (1907: 24; 1921: 27); Blatchley (1910: 1201); Slingerland and Crosby (1914: 403); as “the chief food plants of the grape-vine flea-beetle are the various species of wild and cultivated grapes found in the eastern United States” by Hartzell (1915: 202); Blatchley (1924: 20); as “destroy all wild grapevines” by Hartzell (1924: 83); as “destroying all wild grape vines” by Ross (1926a: 30); Caesar (1927: 44); Britton (1928: 675); Zappe (1928: 729; 1930: 609); Blunck (1954: 325); Kirk (1969: 96; 1970: 92); Borrer *et al.* (1989: 460); as “wild grapes” by Dearborn and Donahue (1993: 67); Downie and Arnett (1996: 1374).

- *Vitis bicolor* LeConte (Wild Blue Grape): as “this grape species has been the preferred host during five years” according to Hartzell (1915: 203). Quoted later by Isely (1920: 4).

- *Vitis labrusca* L.: Clark (2000: 33).
- *Vitis rotundifolia* Michx.: Balsbaugh and Hays (1972: 148); Wilcox (1979: 25).
- *Vitis vulpina* L. (= Muscadine): Clark (2000: 33).
- *Vitis vinifera* L. : Fitch (1859a [1856]: 69, 84) as “*Vitis vinifera et. al*”.

b) accidental host-plants mentioned in the literature:

- *Acer saccharum* Marsh. (Sugar Maple): no feeding observed by Hartzell (1915: 203).
- Alder: see *Alnus*.
- *Alnus serrulata* (Ait.) Winkler (Rough Alder) [now considered a variety of *Alnus rugosa* (Du Roi) Spreng.] by Scoggan (1978: 589); Saunders (1883: 279; 1889: 279; 1900: 279); Schwarz (1892: 183); Luggar (1899: 243). In my opinion, all these records are in error and refer to the host-plant of *Altica ambiens alni* Harris (LeSage 1995).
- *Alnus* sp. (Alder): Fitch (1859a [1856]: 84); Marlatt (1896: 396); Reh (1913: 524).
- American Elm: see *Ulmus americana*.
- Apple: see *Malus pumila*.
- Ash (White Ash): see *Fraxinus americana*.
- *Betula lenta* L. (Cherry Birch): no feeding observed by Hartzell (1915: 203).
- Birch (Cherry Birch): see *Betula lenta*.
- Black Alder (= *Alnus glutinosa* (L.) Gaertn. [a European plant spread from cultivation and locally naturalized *fide* Scoggan (1978: 588)]: Harris (1835: 54), cited by Isely (1920: 4).
- Black Raspberry: see *Rubus* spp.
- Blue or Water Beech (= *Carpinus* sp.): Schwarz (1892): 183. Cited later by Quaintance and Shear (1907: 24; 1921: 27), Hartzell (1910: 498), and Isely (1920: 4).
- Canadian Elder: see *Sambucus canadensis*.
- *Carpinus* sp.: only adults found great numbers on this plant *fide* Schwarz (1892: 183), Reh (1913: 524)+.
- Cherry Birch: see *Betula lenta*.
- Common Chickweed: see *Stellaria media*.
- Common Willow: see *Salix alba*.
- *Cornus stolonifera* Michx. (Red Osier): no feeding observed by Hartzell (1915: 203).
- *Crataegus* sp.: no feeding observed by Hartzell (1915: 203).
- *Cydonia oblonga* Mill. (Quince): as “seedlings of ...” by McMillan (1888: 75), cited later by Quaintance and Shear (1907: 24; 1921: 27), Hartzell (1910: 498), and Isely (1920: 4).
- Dandelion: see *Taraxacum officinale*.
- Dog’s Tooth Violet: see *Erythronium americanum*.
- Elder: see *Sambucus canadensis*.
- Elm: see *Ulmus* sp.
- *Erythronium americanum* Ker-Gawl. (Dog’s Tooth Violet): no feeding observed by Hartzell (1915: 203).
- *Fagus grandifolia* Ehrh. (American Beech): no feeding observed by Hartzell (1915: 203).
- *Fragaria* sp. (Strawberry): no feeding observed by Hartzell (1915: 203).
- *Fraxinus americana* L. (White Ash or Ash): no feeding observed by Hartzell (1915: 203).
- Hawthorn: see *Crataegus* sp.
- *Malus pumila* Mill. [*Pyrus* (*Malus*) *sylvestris* L. is synonym *fide* P. Catling (pers. comm.)] (Apple): McMillan (1888: 75). Quoted later by Quaintance and Shear (1907: 24; 1921: 27), Hartzell (1910: 478), Isely (1920: 4), and Dean (1930: 140). No feeding observed by Hartzell (1915: 203).
- *Mucuna deeringania* (Bot.) Mer. Blatchley (1924: 20).
- *Myrica* sp.: Blatchley (1924: 20).

- Peach: see *Prunus persica*.
 - Pear: see *Pyrus communis*.
 - Plum, Plum tree: see *Prunus domestica*
 - Poison Ivy: see *Rhus radicans*.
 - *Prunus domestica* L. (Plum, Plum tree): Fitch (1859a [1856]: 84); “sometimes feeds on”, Saunders (1883: 190, 279; 1889: 190, 279; 1900: 190, 279); Britton (1898: 316); Lugger (1899: 243); McMillan (1888: 75); Quaintance and Shear (1907: 24; 1921: 27); Isely (1920: 4); as “on plum blossoms” Blatchley (1924: 20); Dean (1930: 140). No feeding observed by Hartzell (1915: 203).
 - *Prunus* sp.: doubtful occurrence *vide* Schwarz (1892: 183).
 - *Prunus persica* L. (Peach): as “seedlings of ...” by McMillan (1888: 75); Neal (1890: 11), cited by Isely (1920: 4), Quaintance and Shear (1907: 24; 1921: 27). No feeding observed by Hartzell (1915: 203).
 - *Pyrus communis* L. (Pear): no feeding observed by Hartzell (1915: 203).
 - *Cydonia oblonga* Mill. (Quince): as “seedlings of ...” by McMillan (1888: 75), cited later by Quaintance and Shear (1907: 24; 1921: 27), Hartzell (1910: 498), and Isely (1920: 4).
 - Quince: see *Cydonia oblonga* Mill.
 - Red Osier: see *Cornus stolonifera*.
 - Red raspberry: see *Rubus* spp.
 - *Rhus radicans* L. (Poison Ivy): Blatchley (1910: 1201). No feeding observed by Hartzell (1915: 203).
 - *Rhus typhina* L. (Sumac): no feeding observed by Hartzell (1915: 203).
 - *Rubus* spp. (Black and Red Raspberry): no feeding observed by Hartzell (1915: 203).
 - *Salix alba* L. (Common Willow): no feeding observed by Hartzell (1915: 203).
 - *Sambucus canadensis* L. (Elder, Canadian Elder): no feeding observed by Hartzell (1915: 203).
 - *Stellaria media* (L.) Cyrill. (Common Chickweed): no feeding observed by Hartzell (1915: 203).
 - Strawberry: see *Fragaria* sp.
 - Sugar Maple: see *Acer saccharum*.
 - Sumac: see *Rhus typhina*.
 - *Taraxacum officinale* Weber (Dandelion): no feeding observed by Hartzell (1915: 203).
 - *Ulmus* sp. (Elm): Fitch (1859a [1856]: 84; 1859a [1858]: 63); Reh (1913: 524), Dean (1930: 140). Doubtful occurrence *vide* Schwarz (1892: 183), Quaintance and Shear (1907: 24), and Isely (1920: 4). No feeding observed by Hartzell (1915: 203).
 - *Ulmus americana* L. (American Elm): no feeding observed by Hartzell (1915: 203).
 - Velvet bean: see *Mucuna deeringania* (Bot.) Mer.
 - Wax myrtle: see *Myrica* sp.
 - White Ash: see *Fraxinus americana*.
 - Willow (Common Willow): see *Salix alba*.
- c) true-host plants recorded on the labels of specimens examined:
- Concord grape (= a cultivated variety of *Vitis labrusca* L.; 1 record.
 - Cultivated Grape: see *Vitis vitifera*.
 - Grape: see *Vitis* sp.
 - Muscadine Grape (*Vitis vulpina* L.): 1 record
 - *Vitis* spp. 20 records.
 - *Vitis riparia* Michx., or Wild Grape: 4 records.

- *Vitis rotundifolia* Michx.: 1 record.
- *Vitis vitifera* L. (variety not specified): 2 records.

d) accidental host-plants recorded on the labels of specimens examined:

- *Amelanchier* sp.: 1 record.
- *Barbarea vulgaris* R. Br. (flowers of): 1 record.
- *Cornus stolonifera* Michx. (beating of): 1 record.
- *Crataegus* sp. : 1 record.
- Goldenrod (*Solidago* sp.): 1 record.
- Hawthorn (*Crataegus* sp.): see above.
- Oak (*Quercus* sp.): 1 record.
- Pine tree (*Pinus* sp.): 1 record.
- *Populus tremuloides* Michx. (beating of): 1 record.
- Spanish moss (*Tillandsia usneoides*): 1 record.
- "Wild thorn" (stem of; *Crataegus* sp.): 1 record

Biology. Like the majority of *Altica* species, *A. chalybea* overwinters in the adult stage. The first cold temperatures of the fall trigger adults to search for suitable places to overwinter with preference for woods and wastelands around vineyards (Hartzell 1910; Slingerland and Crosby 1914; Weigle and Kovach 1995). Various shelters are utilized: crevices of the bark and in the earth immediately around the root of the tree on which it feeds (Fitch (1859*b*), loose bark or crevices of stakes (Riley 1870*a*), in any crevices under stones, sticks or logs (Comstock 1880), in cracks of fences or buildings, in masses of leaves or under bark (Harrington 1882*b*; Marlatt 1896), around roots of vines (Comstock 1880; Lugger 1899), under bark and rubbish (Blatchley 1910), mainly under dry leaves and rubbish in woodlands, also under bark of trees or vines (Hartzell 1910), under loose bark, and trash around vineyards (Slingerland and Crosby 1914), under leaves, grass and rubbish (Ross and Armstrong 1949), and under plant debris (McGrew and Still 1979; Campbell *et al.* 1989).

Overwintered adults emerge in early spring in synchrony with the appearance of the first buds on vine canes and move from their winter quarters into vineyards (McGrew and Still 1979). In the Ottawa area, this migration corresponds to the last week of April or first week of May. It occurs earlier at lower latitudes.

Emerging males and females feed on buds for 1-2 weeks before mating and ovipositing. Blatchley (1910) observed first matings in Indiana on April 12. Pairs are rarely seen before the second week of May in the Ottawa area but were seen as soon as mid-April in spring 2002, during exceptionally warm days (25°C). According to Hartzell (1910) and my own observations, the mating period lasts over a month, until the death of the spring adults. Repeated copulations are usual in rearing cages, and probably occur in nature as well (Hartzell 1910). Spring adults eat the tender parts of developing buds, boring holes into them (Figure 8), or even scooping them out completely (Hartzell 1910; Still and Rings 1973; McGrew and Still 1979; Taschenberg and Riedl 1985; Weigle and Kovach 1995). After the buds have opened, they chew small holes in the leaves.

Oviposition begins a few days after mating. Eggs are usually deposited on buds, under bud scales (Isely 1920; Quaintance and Shear 1907), and within spaces in cracks of the bark at the base of the buds (Gibson 1913) or under loose bark of canes. Saunders (1883; 1889; 1900) reported that eggs are laid on the underside of the young vine leaves. Such questionable observations probably concerned the oviposition of *Altica woodsi*. For instance, Slingerland and Crosby (1914) claimed that eggs were rarely laid on leaves, whereas Marlatt (1896), and Lugger (1899) mentioned that eggs were occasionally laid there. According to Isely (1920), citing Comstock (1880), they are laid

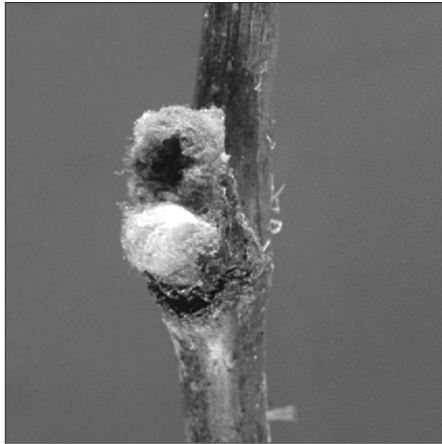


FIGURE 8. Unopened grapevine buds damaged by adults of *Altica chalybea* in early spring.

on both sides of leaves, whereas Peairs (1941) reported that eggs were laid on almost any part of the vines.

Females of *Altica chalybea* lay eggs singly or in small irregular clumps of 4-5 (Riley 1870*b*; Comstock 1880), in cracks in the bark at base of buds, between bud scales, or even in the holes which have been eaten into the buds (Quaintance and Shear 1921). The length of the eggs ranges from 0.93 to 1.14 mm with an average of 1.03 mm (Hartzell 1910). Their colour varies from straw (Comstock 1880, Isely 1920; Slingerland and Crosby 1914), to deep yellow (Isely 1920), or orange (Marlatt 1896; Lugger 1899; Isely 1920). The number of eggs laid by females is quite variable. According to Hartzell (1910), an average of 70 eggs were laid by females during their lives, with a maximum of 210 observed. This author also mentioned that the greatest numbers of eggs were laid during the warmest part of the day. The incubation period is highly dependent on weather conditions. It averaged 15 days and extended from May 18 to June 28 in eggs obtained from adults maintained in cages by Isely (1920). The oviposition period lasts roughly 2 months, from April to early June, with more or less important variations according to local weather conditions and latitude. First instar larvae can be seen as early as mid-March in Georgia according to Comstock (1880). There are 3 larval instars in *Altica chalybea*. Each instar lasts about 8 days, for a total larval period of 3-4 weeks (Isely 1920).

Larvae are exclusively leaf feeders. According to authors, the larvae are supposed to feed only the upper surface of the leaves and produce typical chain-like white patches on the leaf blade, but those reared in Petri dishes in 2002 fed exclusively on the undersurface of leaves. Larger larvae riddle the leaves with large irregular holes and can completely skeletonize the leaves (Comstock 1880, Neal 1890) if they are numerous. In the Northeast, larvae are mainly found on the vines in June and July (Isely 1920).

When fully grown, larvae drop onto the ground to pupate. Pupation takes place one to several inches underground in small earthen cells made of packed soil particles. The colour of the pupa varies from yellow (Hartzell 1910) to dark yellowish (Lugger 1899), saffron-yellow (Slingerland and Crosby 1914) or yellowish brown (Comstock 1880). The period of time spent underground lasts two to three weeks, and occurs largely in late June and July in the Northeast (Comstock 1880; Marlatt 1896; Isely 1920).

New adults appear on vines in late July. I agree with Lugger (1899), and Hartzell (1910) that these adults feed little on leaves in contrast to Comstock (1880) who reported that they do

considerable damage to leaves. According to Riley (1870b), Isely (1920), and my own observations, new adults do not mate nor oviposit but remain active on plants until the end of summer.

There is only one generation per year in the Northeast (Hartzell 1924; Eyer and McCubbin 1926). Marlatt (1896) and Comstock (1880) reported that there might be two in southern states, but their hypothesis has not yet been confirmed.

Parasites. Although none were found by Riley (1870b), Comstock (1880), or Isely (1920), parasites of adults or larvae probably exist but have not yet been identified.

Predators. Isely (1920) claimed that adults of *Altica chalybea* were found in the stomach contents of several kinds of birds. In my opinion, this statement is in error for two reasons. Firstly, *A. chalybea* adults are unlikely to be caught by birds due to their jumping habits, and secondly, they cannot be identified from body fragments.

Lintner (1891), cited later by Slingerland (1898), reported that Mr. George C. Snow of Penn Yan, New York observed a nymph of a stink bug, identified later by Mr. Uhler as probably *Podisus modestus* Dallas, sucking out the juices of a grape flea-beetle larva. Slingerland (1898) also observed the lady-bird *Megilla maculata* (= *Coleomegilla maculata lengi* Timberlake) "eating a young grub of the grape-vine flea-beetle", but concluded that these predators have done little to hold the grape flea beetle in check.

Hartzell (1915) noticed that eggs were not attacked by parasites to any extent. The larvae, however, were preyed upon by a species of carabid which closely resembles the adult flea-beetle in size and colour (probably *Lebia* sp.). These beetles were not found in high numbers, so their activities did not decrease the number of larvae to any great extent. In Aylmer, Québec (north of Ottawa, Ontario), I collected adults of the carabids *Lebia moesta* LeConte and *L. viridis* Say along a fence where *Altica chalybea* was breeding.

Hartzell (1915) also reported a nymph of an undetermined species of Pentatomidae piercing the bodies of the larvae and sucking their body fluids. Finally, the adults did not appear to be fed upon by birds.

In rearing cages, the ground beetle *Harpalus erythropus* Dejean fed on the larvae and pupae of *A. chalybea*, whereas *Lebia viridis* Say and *L. ornata* Say attacked its eggs, larvae, and pupae (Isely 1920). Isely also mentioned that the ant *Myrmica scabrinodis* Nylander destroyed larvae and pupae of this flea beetle under rearing conditions.

Common names. Harris (1841: 104, 1842: 104, 1852: 129, 1862: 129) first popularized the names "*Steel-blue flea-beetle*" for its usual blue colour and "*Grape-vine flea beetle*" in reference to its host-plant. Riley (1868: 27; 1870b: 327) also used both, whereas the latter name has been adopted by Harris (1854: 11), Fitch (1859a [1856]: 84), Saunders (1871: 108; 1872: 359; 1883: 277; 1884: 207; 1885: 17; 1889: 277; 1900: 277), Gott (1878: 45; 1879: 58), Harrington (1882a: 25; 1882b: 60), Smith (1890: 225), Lintner (1891: 332, 353), Bethune (1893: 10; 1898: 33; 1907: 35), Marlatt (1896: 395), Lowe (1898: 263), Lugger (1899: 241), Felt (1900a: 555, 563, 564, 601; 1900b: 15; 1901: 1005; 1902: 838), Thomas (1906: 197), Caesar (1914: 81; 1916: 31), Gibson (1914: 27), Quaintance and Shear (1922: 239), Herrick (1925: 175), Ross and Caesar (1925: 86), Britton (1926: 221; 1928: 675), Caesar and Ross (1925: 86; 1926: 14), Ross (1926a: 30; 1926b: 188), Caesar (1927: 44), Leonard (1928: 477) and Zappe (1928: 729; 1930: 609).

The shorter form "*Grape flea beetle*" was first proposed by Smith (1900: 312; 1910: 352) and accepted later by the *Entomological Society of America*: Muesebeck (1942: 87, 93), Werner (1982: 19), Stoetzel (1989: 29), Bosik (1997: 31), and most authors of the last century: Blatchley (1910: 1201), Hartzell (1910: 494), Smith (1910: 352), Eyer and McCubbin (1926: 12), Gibson (1934a:

32), MacNay (1955: 80), Balsbaugh and Hays (1972: 148), Benoit (1975: 25; 1985: 10), Taschenberg and Riedl (1985: 1), Dearborn and Donahue (1993: 67), Weigle and Kovach (1995: 8), Clark (2000: 32).

“*Steel-blue beetle*” was utilized once by Riley (1870a: 309), and later changed to “*Steel-blue flea-beetle*” (Riley 1889: 221). “*Steely beetle*” is given as a variation by Hartzell (1910: 494; 1924: 82). Finally, Riley (1870b) reported that some vineyardists erroneously called the grape flea beetles “thrips” when they first noticed them.

The popular name “*Steel-blue grapevine flea beetle*” has been erroneously used by Ebeling (1959: 333) for *Altica torquata* LeConte, a Southwestern species to be treated later in a separate contribution.

The French equivalent of the “*Grape flea beetle*”, is “*Altise de la vigne*” (SPPQ 1947: 8, 1952: 8, 1964: 9; Benoit 1975: 26, 1985: 10; Belton and Eidt 1996: 4).

Economic importance and control. The most important losses result through direct bud feeding by the overwintered adults when they hollow out the buds in the spring just as they are swelling (Gott 1879; Lintner 1891: 332, 353; Harrington 1882a,b; Saunders 1883, 1884, 1889, 1900; Hartzell 1924; Herrick 1925; Britton 1926, 1928; Eyer and McCubbin 1926; Ross 1926a, 1926b; Caesar 1927; Zappe 1930; Still and Rings 1973; McGrew and Still 1979; Weigle and Kovach 1995). Damage to buds largely occurs on vines located along the borders of vineyards next to wooded or trashy areas. Destroyed or damaged buds cannot develop into primary grape canes, and thus the crop yield is more or less reduced according to the severity of the attack.

Control measures are efficient only if they are timed with the vine development. Losses will be considerably reduced if the spring adults are killed before they chew up the developing buds. Weigle and Kovach (1995) recommended treatment as soon as damage to buds reached 1-2%.

Treatments applied in the past consisted mostly of arsenical poison (Marlatt 1896; Quaintance and Shear 1907; Slingerland and Crosby 1914). Air-slaked lime, Paris green, Bordeaux mixture, or unleached ashes were also tried with variable success (Lugger 1899; Quaintance and Shear 1907). Peairs (1941) suggested controlling the larvae before they produce new adults because it is too difficult to spray against the adults in the spring. Modern pesticides, such as *Rotenone*, *Malathion*, *Cygon*, etc. are probably more efficient than the old treatments, but accurate information on their efficiency is still lacking.

The grape flea beetle can also be partially controlled by appropriate vineyard management. The suggestion of Lugger (1899) to remove and destroy all rubbish that provides hibernation sites for adults is still valid. Hartzell (1910) also recommended keeping the vineyards clean and the surrounding wastelands clear.

2. *Altica woodsi* Isely, 1920

Altica woodsi Isely 1920: 11 (original description); Gibson 1925: 23 (biology in Ontario); Blackwelder 1939: 63 (supplement to the catalogue of North American Coleoptera); Heikertinger and Csiki 1940: 242 (world catalogue); Peairs 1941: 323 (handbook on insect pests); Wilcox 1954: 446 (Ohio fauna); MacNay 1956: 116 (infestation in Manitoba); Chagnon and Robert 1962: 316, 408 (Québec fauna); Balsbaugh and Hays 1972: 148 (Alabama fauna); Wilcox 1975: 110 (catalogue of North American Chrysomelidae); Wilcox 1979: 25 (host-plants of North American Chrysomelidae); Campbell *et al.* 1989: 74 (beetle pests of crops in Canada); Laplante *et al.* 1991: 99 (checklist of Québec Coleoptera); Downie and Arnett 1996: 1374 (Northeast fauna); Clark 2000: 34 (annotated list of West Virginia Chrysomelidae); Lasnier *et al.* 2001:4 (web site on Québec grape pests).

Haltica woodsii Isely, Leonard 1928: 477 (New York insect list); Chagnon 1938: 163 (Québec fauna); Chagnon 1940: 316 (Québec fauna); Blunck 1954: 326 (handbook of phytophagous beetles); Chagnon and Robert 1962: 316, 408 (Québec fauna).

Haltica ignita Lugger 1899: 243 [not *ignita* Illiger, 1807] (Minnesota insect pests). Misidentification.

Haltica ignita Gibson 1913: 7 [not *ignita* Illiger, 1807] (garden pests). Misidentification.

Haltica (Altica) woodsii, Gibson 1926: 578 (occurrence in Canada).

“An enemy to the grape”, Worden 1862: 350 (report on infestation).

“The blue grape beetle”, Larrowe 1862: 382 (answer to grower).

“Lesser grape vine flea-beetle”, Fall 1920: 105 (taxonomic comments).

Etymology. Named in honour of W.C. Woods, an American entomologist who made important contributions to the biology and taxonomy of *Altica*.

Diagnosis. Elongate, small blue-green species, 3.3-3.8 mm long, with deep pronotal groove (Figure 1b). Male with tip of aedeagus triangular and weakly nipple-shaped in the middle, with ventral median carina and ventral longitudinal ridges, both well developed (Figure 2b). Female with styli narrow, and their inner margins weakly diverging at apex (Figure 3a).

The host-plants of *Altica woodsii* are restricted to the plant genera *Vitis* and *Parthenocissus* in the family Vitaceae.

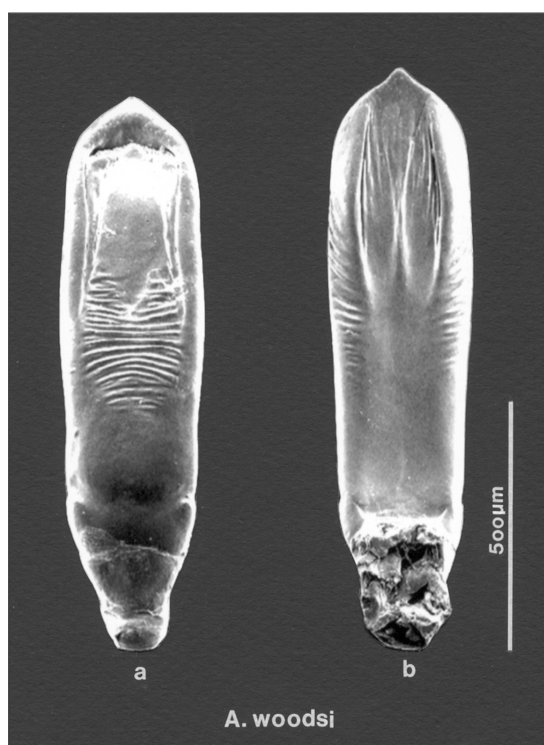


FIGURE 2. Aedeagus of *Altica woodsii*: a, dorsal view; b, ventral view.

Traits distinctifs. Petite espèce allongée, bleu-vert, 3,3-3,8 mm de longueur, à sillon pronotal profond (figure 1b). Chez le mâle, bout de l'édéage triangulaire et légèrement mammelonné au milieu, à carène ventrale médiane et arêtes longitudinales ventrales bien développées (figure 2b). Chez la femelle, styles étroits à marges internes peu divergentes à l'extrémité (figure 3a).

Les plantes-hôtes d'*Altica woodsi* sont restreintes aux espèces des genres botaniques *Vitis* et *Parthenocissus* de la famille des Vitaceae.

Description. BODY. Small elongate species, 3.3-3.8 mm long. (Table III). *Colour* appearing blue or blue-green when alive but with various reflections under the microscope: blue (74%), purplish-violet (21%), or blue-green on pronotum and purplish on elytra (5%); antennae and legs black with blue reflections; tarsi dark reddish brown.

HEAD. *Antennae* proportionately longer in males than in females (Table III); antennomeres 3 and 4 subequal in length but both distinctly longer than 2. *Frontal carina* broadly rounded, ending at 2/5 to Ω of frontal tubercles. *Frontal tubercles* smooth, weakly defined posteriorly by frontal groove; median frontal groove moderately long, not well defined (5%), short (50%), or moderately developed (45%). *Vertex* smooth or very faintly alutaceous, with few moderately coarse punctures behind eyes. *Eyes* separated by 2.5 times their diameter, not prominent. *Postocular macrochaetae*: 1. *Labral setae*: 6. *Mandibles* with outer and median teeth normal, inner tooth with deep basal indentation, cutting edge straight and rectangular or slightly produced at apex (Figures 3b-d).

THORAX. *Pronotum* quadrate, slightly narrower at apex than at base, with sides subparallel in basal half, moderately arcuate towards apex. *Anterior angles* of pronotum obliquely rounded. *Transverse groove* of pronotum deep, extending to lateral margins. *Punctuation* of pronotum moderately dense and fine. *Microsculpture* of pronotum visible but slightly impressed. *Tarsal claws* normal, basal tooth rectangular.

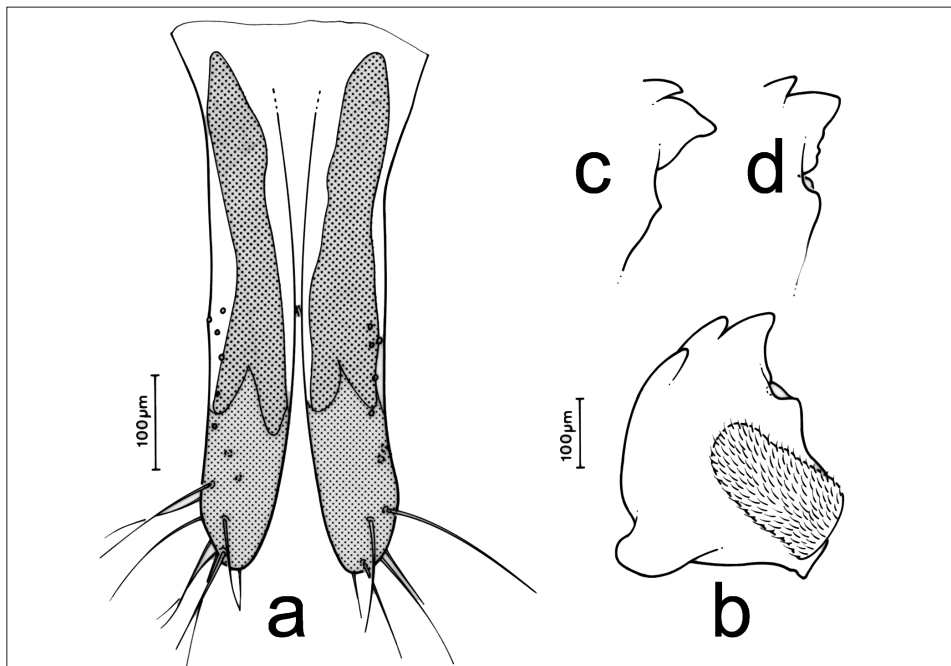


FIGURE 3. *Altica woodsi*: a, styli; b-d, mandible.

Table III. Measurements of body, antennae and pronotum in *Altica woodsii*

	Minimum	Maximum	Mean (n =10)
Male			
Body length (mm)	3.3	3.6	3.5
Body width (mm)	1.8	2	1.9
Body length/ width ratio	1.79	1.94	1.84
Antenna length (μm)	215	230	222
Antenna/ body ratio	0.61	0.67	0.64
Pronotum width (μm)	118	130	124
Pronotum length (μm)	76	84	79
Pronotum width/ length ratio	1.51	1.62	1.57
Female			
Body length (mm)	3.6	3.8	3.7
Body width (mm)	1.9	2.2	2
Body length/ width ratio	1.76	1.87	1.81
Antenna length (μm)	210	220	216
Antenna/ body ratio	0.58	0.62	0.59
Pronotum width (μm)	124	136	128
Pronotum length (μm)	76	86	79
Pronotum width/ length ratio	1.53	1.70	1.62

ELYTRA. *Umbones* not prominent, weakly defined on inner side by small depression. *Elytral costa* absent. *Punctuation* moderately dense, coarser than that of pronotum, moderately coarse and dense, with tendency to be arranged in irregular rows near suture and at base. *Microsculpture* present and deeper than on pronotum.

SEXUAL DIMORPHISM. *Body* slightly more elongate in male than in female (Table II). *Antennae* proportionately longer in male than in female. *First tarsomeres* of front legs slightly broader in male than in female.

MALE GENITALIA. (Table IV). *Median lobe* of aedeagus appearing almost straight in dorsal view (Figure 2a); *tip* triangular, and weakly nipple-shaped in middle; *dorsal undulations* distributed on 1/3 length of aedeagus; *ventral longitudinal ridges* broadly separated by 3/5 width of aedeagus;

TABLE IV. Measurement of male and female genitalia in *Altica woodsii*

	Minimum	Maximum	Mean (n =10)
Male			
Aedeagus length (μm)	116	124	118
Ventral wrinkles	10	12	11.6
Female			
Spermatheca length (μm)	224	256	237
Length of styli (μm)	333	416	381
Apical setae on styles	7	10	9
Sensilla on styles	5	11	9

10-12 *ventro-lateral wrinkles* present, larger towards base, not oblique, and not fused in middle; *median carina* sometimes weak but usually well defined (Figure 2b).

FEMALE GENITALIA. (Table IV). *Receptacle* of spermatheca ovoid, larger at base (Figs. 7); *spermathecal pump* cylindrical, not extending beyond base of receptacle; *apical process* present, large (Figure 9a, 9d), or small (Figure 9b, 9c); *spermathecal valve* small; *spermathecal duct* coiled into 2 loops, basal straight portion short; *styli* fused on half their length with inner margins weakly diverging at apex (Figure 3a).

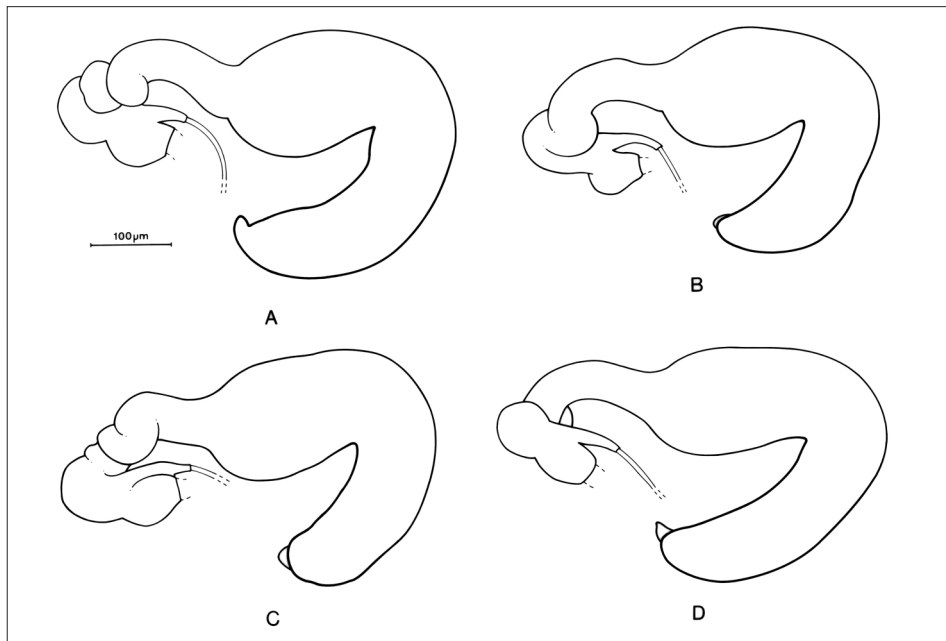


FIGURE 9. Variations of the spermatheca in *Altica woodsi*: a-d

Remarks. The female genitalia of *Altica woodsi* are very similar to those of *A. litigata* Fall or *A. suspecta* Fall, the latter probably being a synonym of the former. The spermathecae are virtually identical and the styli differ only by their width, those of *woodsi* (Figure 3a) being proportionally a little broader than in *A. litigata*. However, males of *Altica woodsi* and *A. litigata* are easily separated by the shape of their aedeagus: apex triangular and slightly nipple-shaped in the middle in *A. woodsi*, apex lanceolate in *A. litigata*.

Type material. The type series of *Altica woodsi* Isely contains 22 specimens which are deposited in the USNM, in Washington. The holotype bears the following labels: "North East, Pa. 1916/ Quaintance 16427/ Bred from grape/ Reared by D Isely, and a red label *Altica woodsi*, Type no. 22290 U.S.N.M.". Twenty paratypes have the same labels and red label "*Altica woodsi*, Type no. 22290 U.S.N.M."; in the last paratype, the month of the date is given: "VIII.1916". A database tag has been added to these labels: "Database/ LeSage/ *Altica woodsi*/ # 421". Finally, the type series is accompanied by an additional specimen with the same information, but without the red paratype label.

Literature errors.

- Larrowe (1862: 382). In his answer to an inquiry of Worden (1862: 350), Larrowe misidentified *Altica chalybea* for *A. woodsi*. His observation concerned *A. chalybea*, but the flea beetles mentioned by Worden were definitely *A. woodsi* since the adults were green, and above all, the eggs were laid on leaves, not inside the buds or in bark cracks as in *A. chalybea*.

- Slingerland (1898: 194). According to Isely (1920: 13) and myself, Slingerland's statement that thin-leaved varieties of grapes were preferred by the grapevine flea-beetle probably refers to *Altica woodsi* instead of *A. chalybea*.

- Marlatt (1896: 395). This author claimed that eggs of *Altica chalybea* were deposited later in the season "in clusters on their lower surface" (of leaves). These comments refer to *A. woodsi*.

- Luger (1899: 243). At least part of the information given on the host-plants and biology of the adults of "*Haltica ignita* Ill." likely concerns *Altica woodsi*, since the host-plants listed (Grape and Virginia Creeper) are those of *Altica chalybea* or *A. woodsi*. In addition, the habits of the adults to chew into the buds in early spring correspond to what is observed in both species of grape flea beetles.

- Comstock (1880: 214). This author stated that "the eggs [of *Altica chalybea* and *A. woodsi*] are laid in irregular clumps of four or five, more or less, both upon and under sides of the leaf. Rarely a few eggs are to be found upon unopened buds." Oviposition on the upper surface of leaves is unusual for both *Altica chalybea* and *A. woodsi*. *A. chalybea* deposits its eggs primarily on buds, whereas *A. woodsi* does so on the undersurface of leaves.

- Slingerland (1898: 197). Slingerland could not explain the discovery of eggs as late as July 15th on the underside of leaves in a New York vineyard owned by V.H. Lowe. In a footnote in his paper, Slingerland speculated that there could be a second brood in New York. This apparent second generation simply corresponds to the oviposition period of *Altica woodsi*.

Locality records from specimens examined. The following list is based on the examination of 1776 specimens.

CANADA

Ontario. *Carleton Co.*: Constance Bay (MZELU) 2, Gloucester (CFIM) 12, Harwood Plains (CFIM) 7, Kanata (CFIM) 7, Marshall Bay (CFIM) 1, Mer Bleue (CFIM) 1, (MZELU) 3, Nepean (CFIM) 12, North Gower (CNC) 11, / Marlborough Forest (CNC) 16, Ottawa (CNC) 22, (CFIM) 31, (MZELU) 3, (NDSU) 1, (SMCC) 1, / Hampton Park (CFIM) 3, Shirleys Bay (CNC) 1; *Cochrane Dist.*: Forks Creek River (as "FKS.Cr.R.") (SAMC) 2; *Durham Co.*: Darlington Provincial Park (CFIM) 1; *Essex Co.*: Park (CNC) 1; *Halton Co.*: Halton Hills/ Limehouse (SAMC) 1, Milton (CNC) 2, (SAMC) 2, Oakville (SAMC) 1; *Hastings Co.*: Foxboro (SAMC) 1, Marmora (CNC) 3; *Kent Co.*: Rondeau (CNC) 4, Rondeau Park (CNC) 14, / Marsh Trail (CNC) 3; *Lambton Co.*: Pinery Provincial Park (MZELU) 3, (SAMC) 1; *Leeds Co.*: St. Lawrence Islands National Park/ Aubrey Island (CNC) 6, / Camelot Island (CNC) 1, / Gordon Island (CNC) 4, / Grenadier Island (CNC) 11, / Grenadier Island Centre (CNC) 1, / Grenadier Island East (CNC) 6, / Lindsey Island (CNC) 1, / McDonald Island (CNC) 2, / Mulcaster Island (CNC) 1, / Thwartway Island (CNC) 13; *Lincoln Co.*: Vineland (SAMC) 1; *Norfolk Co.*: Port Rowan (CNC) 31; *Northumberland Co.*: Brighton (CFIM) 1, Dundas (SAMC) 2, Ferris Provincial Park (CFIM) 1, Presqu'ile Provincial Park (LEM) 8, (CFIM) 45, (MZELU) 1; *Peel Co.*: Belfountain (now part of Caledon) (SAMC) 1; *Prescott Co.*: Carillon (CNC) 2, Carillon Provincial Park (CNC) 5; *Prince Edward Co.*: county record only: (CDFA) 3, (CNC) 34, (CUIC) 4; *Renfrew Co.*: Arnprior (CNC) 66, (CFIM) 1; *Russell Co.*: Cumberland (ISAC) 16; *Simcoe Co.*: Lefroy (SAMC) 3; *Stormont Co.*: Long Sault/ St. Lawrence River (CFIM) 1; *Thunder Bay Dist.*: Kirby (SAMC) 8; *Wellington Co.*: Damascus (SAMC) 1, Elora (SAMC) 1, Guelph (SAMC) 9, Guelph/ University of Guelph Arboretum/ Goose Wood

(SAMC) 10, Orangeville (SAMC) 1, Rockwood (SAMC) 1; *Wentworth Co.*: Hamilton (CNC) 2; *York Co.*: Keswick (SAMC) 1, Stouffville (SAMC) 1, Toronto (LEM) 1, (SAMC) 3, / Royal Ontario Museum Department of Entomology (ROM) 1, / Zoo (AVMC) 3, Willowdale (SAMC) 1.

Previously reported from this province by Gibson (1913 : 6; 1925: 23; 1926: 578).

Québec. *Argenteuil Co.*: île de Carillon (LEM) 2, (CFIM) 1, / (by) Ottawa River (CFIM) 2; *Beauharnois Co.*: île Hébert (CFIM) 1; *Berthier Co.*: Berthierville (CEUM) 87, (CFLQ) 2, (LEM) 87, (CFIM) 1; *Chambly Co.*: Saint-Hubert (LEM) 26, (CFIM) 1, Saint-Lambert/ (by) Saint-Laurent (River) (CFIM) 1; *Champlain Co.*: Longueuil (CFIM) 1, *Châteauguay Co.*: Châteauguay (CEUM) 3, (CFIM) 1; *Deux-Montagnes Co.*: Kanesatake (= Oka) (CCC) 8, (CFIM) 5, La Trappe (CEUM) 56, (CFIM) 1, Oka (CFIM) 1, Parc d'Oka (CFIM) 1, Saint-Eustache (CFIM) 1; *Drummond Co.*: Drummondville (CFIM) 6, Saint-Charles (CFIM) 4; *Gatineau Co.*: Aylmer (CCC) 3, (CFLQ) 4, (CFIM) 134, (UNHC) 2, / bord de la rivière des Outaouais (= edge of Ottawa River) (CFIM) 1, Aylmer; Bouchette/ Lac Roddick (MZELU) 1; Gatineau Park/ Harrington Lake (CFIM) 1, / Camp Fortune (CFIM) 1, / Folley Bog (CFIM) 1, / Lac Black (CNC) 1, (CFIM) 1, / Lac Pink (CFIM) 1, / Lac Ramsay (CFIM) 1, / Lac Fortune (CNC) 1, (CFIM) 2, / Lac Mulvihill (CFIM) 4, Lucerne (CFIM) 6, Roddick Lake (= local name for Grand Lac Rond) (CFIM) 1, (MZELU) 1, Wakefield (CNC) 2, (CFIM) 1; *Gatineau and Pontiac Co.*: Gatineau Park (CFIM) 2; *Hull Co.*: Hull (AVMC) 4, (CFIM) 2, / Fairy Lake (CFIM) 1, Hull-Ouest/ Parc de la Gatineau (CFIM) 1, Touraine (CNC) 13, (CFIM) 1, Touraine/ Limbour (CNC) 1, (CFIM) 1; *Iberville Co.*: Iberville/ Vignoble Dietrich-Jooss (CFIM) 33; *Île-de-Montréal Co.*: Beaconsfield (LEM) 3, (CFIM) 1, Dollard-des-Ormeaux (CFIM) 13, Montréal (CEUM) 18, (CNC) 96, (LEM) 6, (CFIM) 21, (USNM) 5, / Bois de Saraguay (CFIM) 6, / Angrignon Park (CFIM) 3, Mount Royal (= Mont Royal) (CFIM) 1, Outremont (CFIM) 1, Sainte-Anne-de-Bellevue (LEM) 106, Sainte-Anne-de-Bellevue (as "Ste.Anne") (CEUM) 4, (LEM) 14; *Île-Jésus Co.*: county record only (as "Laval Co."), Laval (CFIM) 3, Sainte-Dorothée (CFIM) 1; *Lévis Co.*: Lauzon (CFIM) 1; *Lotbinière Co.*: Lotbinière (CFLQ) 9, (CFIM) 1; *Maskinongé Co.*: Maskinongé (CFIM) 1; *Pontiac Co.*: Fort-Coulonge (CFIM) 2, Lac Davis (CFIM) 1, Quyon (CFIM) 1, Shawbridge (LEM) 4, (CFIM) 1; *Portneuf Co.*: Neuville (CFLQ) 14, (CFIM) 1, Saint-Augustin (CCC) 5, (CFLQ) 1, (CFIM) 1; *Québec Co.*: Sainte-Foy (CFLQ) 1; *Rouville Co.*: Ange-Gardien (CFLQ) 2, (CFIM) 1, Saint-Hilaire (CFIM) 1; *Saint-Jean Co.*: Saint-Jean (CNC) 2, (CFIM) 1; *Soulanges Co.*: Côteau-du-Lac (CFIM) 1; *Vaudreuil Co.*: Choisy (CFIM) 1, Île Perrot (CFIM) 1, Pincourt (CNC) 23, (CFIM) 1, Rigaud (CCC) 5, (CEUM) 1, (CNC) 1, (LEM) 1, (CFIM) 31, / (by) Ottawa River (CNC) 3, (CFIM) 16; *Yamaska Co.*: Yamaska (CNC) 3, (CFIM) 1.

Not located: only a code "59-45" (CFLQ) 2.

Previously recorded for this province by Couper (1881; 219) and Gibson (1925: 23).

UNITED STATES

(Alabama). Previously recorded from this state by Downie and Arnett (1996: 1374). State record not confirmed by the present study.

Connecticut. *New Haven Co.*: New Haven (YPMC) 2.

District of Columbia. District record only: (CNC) 1, Washington (USNM) 2.

Illinois. *Cook Co.*: Glencoe/ Turnbull Woods (INHS) 1, / Riverside Wood (INHS) 1; *Knox Co.*: Galesburg (MCZ) 1; *McDonough Co.*: Macomb (NDSU) 1.

Indiana. *Kosciusko Co.*: county record only (PURC) 2; *Marshall Co.*: Tippecanoe (as "Tipp.") CAS 1; *Posey Co.*: county record only (PURC) 2.

Not located: (locality name illegible) (PURC) 1.

Kansas. *Crawford Co.*: county record only (ISAC) 1.

Louisiana. *Madison Co.*: Tallulah (CDFA) 1.

Maryland. State record only: (CNC) 1; *Anne Arundel Co.*: Odenton (USNM) 1; *Baltimore Co.*: Baltimore (CAS) 2; *Montgomery Co.*: Glen Echo (USNM) 3, Plummers Island (USNM) 2; *Prince George's Co.*: Bowie/ Patuxent Refuge, Laurel (CNC) 1.

Previously recorded from this state by Staines and Staines (1998: 239).

Massachusetts. *Hampden Co.*: Chicopee (USNM) 2 Longmeadow (USNM) 1.

Maine. *Kennebec Co.*: Waterville (RENC) 5; *Penobscot Co.*: Orono (CNC) 1, (USNM) 1.

Michigan. *Barry Co.*: Gull Lake/ 8 mi. S Delton (CNC) 8; *Berrien Co.*: Saint Joseph (CAS) 1; *St. Joseph* (as "St. Joe") *Co.*: county record only (EGRC) 1.

Minnesota. *Anoka Co.*: Ramsey (CNC) 2; *Hennepin Co.*: Saint Anthony Park (CNC) 1; *Sherburne Co.*: Elk River (CNC) 1.

Missouri. *Barry Co.*: Roaring River State Park (EGRC) 1; *Frederick Co.*: Frederick Municipal Forest (EGRC) 1; *Madison Co.*: 3 mi. W Fredericktown (EGRC) 2; *Randolph Co.*: 1 mi E Moberly (EGRC) 16, (RHTC) 1; *Saline Co.*: Van Meter State Park/ Woolbridge Lake (EGRC) 1.

New Hampshire. *Coos Co.*: Gorham (CNC) 3; *Grafton Co.*: Bedel Bridge/ S.P. Oliverian Brook (UNHC) 42.

North Carolina. *Jackson Co.*: Balsam (USNM) 8; *Robeson Co.*: Lumberton (USNM) 1; *Swain Co.*: Bryson City (USNM) 1, Indian Gap (USNM) 5.

New Jersey. State record only: (MCZ) 2; *Warren Co.*: Phillipsburg (CAS) 5.

New York. State record only: (USNM) 3; *Essex Co.*: Whiteface Mountain (EGRC) 1; *Jefferson Co.*: One Thousand Island Park/ Wellesley Island (MZELU) 3; *Monroe Co.*: Rochester (NDSU) 1; *Nassau Co.*: Inwood (USNM) 2; *New York Co.*: New York (CNC) 2; *Niagara Co.*: Olcott (CUIC) 2; *Orange Co.*: West Point (USNM) 19; *Richmond Co.*: Staten Island (MCZ) 1, Staten Island (as "S.I.") (USNM) 5; *Suffolk Co.*: Huntington (in Long Island) (CUIC) 1, Riverhead (NDSU) 2; *Tompkins Co.*: Ithaca (CUIC) 29, Lansing Monkey Run, Taughannock Falls/ 8 mi. N. of Ithaca (CUIC) 28; *Westchester Co.*: Montrose (USNM) 1.

Previously recorded from this state by Isely (1920: 13), Leonard (1928: 477), Wilcox (1975: 110) and Downie and Arnett (1996: 1374).

North Carolina. *Jackson Co.*: Balsam (USNM) 6.

Ohio. *Lake Co.*: Headlands (USNM) 2.

Oklahoma. *Pittsburg Co.*: McAlester (USNM) 1.

Pennsylvania. State record only: (CNC) 3; *Dauphin Co.*: Paxtang (NDSU) 2; *Delaware Co.*: Castle Rock (SMCC) 1, Glenolden (MCZ) 2; *Erie Co.*: North East (CNC) 5, (USNM) 22 [type locality]; *Montgomery Co.*: Miquon (NDSU) 1; *Northampton Co.*: Easton (CAS) 12.

Not located: Hanover (USNM) 3 (county not specified, many possibilities).

Previously recorded from this state by Isely (1920: 13), Gibson (1925: 23) and Downie and Arnett (1996: 1374).

South Carolina. *Chesterfield Co.*: Sandhill State Forest (FAMU) 1.

Tennessee. *Washington Co.*: Johnson City (CAS) 3.

(Texas). Recorded from this state by Wilcox (1974: 110) and Downie and Arnett (1996: 1374).

Vermont. *Chittenden Co.*: Burlington (CNC) 3.

Virginia. State record only: (USNM) 1; *Fairfax Co.*: Black Pond (USNM) 1, Great Falls (USNM) 1; *Lee Co.*: Pennington Gap (USNM) 1; *Loudoun Co.*: near Plummers Island (in MD) (USNM) 1; *Pulaski Co.*: Mechanicsburg (MZELU) 1; *Shenandoah Co.*: New Market (CNC) 3; *Southampton Co.*: Boykins (MCZ) 1; *Virginia Beach City.*: Cape Henry (USNM) 9, Virginia Beach (CNC) 1.

West Virginia. *Cabell Co.*: 1 mi. S Dudley Gap (SMCC) 1; *Doddridge Co.*: Randolph (CFIM) 1; *Fayette Co.*: Hawks Nest State Park (SMCC) 2; *Kanawha Co.*: Ruthdale (SMCC) 1, Guthrie (SMCC) 17, Kanawha State Forest (SMCC) 3, Shrewsbury Hollow (SMCC) 1; *Pleasants Co.*:

Belmont (SMCC) 1; *Ritchie Co.*: 1.5 mi. W Stanley (SMCC) 1; *Summers Co.*: New River at Sandstone (SMCC) 1, Pipestem (MZELU) 1.

Previously recorded from this state by Clark (2000: 34).

Wisconsin. *Dane Co.*: Baskerville Park (CDFA) 2, (CDFA) 3, (EGRC) 1, (NDSU) 1, (USNM) 1.

Distribution. *Altica woodsi* is a Northeastern species distributed from Ontario and Québec to South Carolina and Louisiana (Figure 10). The distribution of *Altica woodsi* is similar to that of *A. chalybea* but does not include the Gulf States. Louisiana is considered here an extension of the natural distribution due to grape growing. Alabama and Texas recorded by authors (see above) are doubtful records that have not been confirmed by voucher specimens.

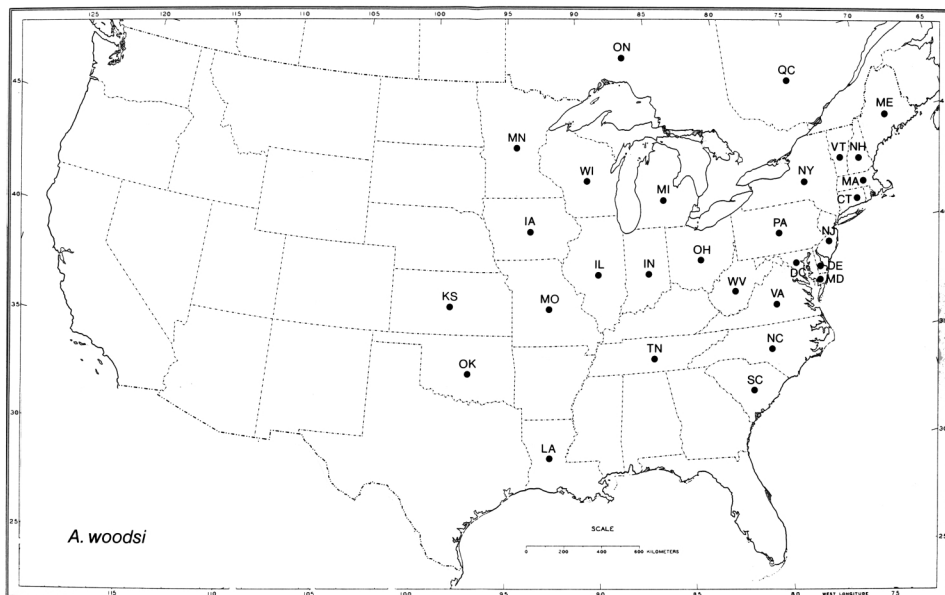


FIGURE 10. Distribution of *Altica woodsi* in North America.

Host-plants.

a) True host-plants mentioned in the literature

- *Delaware* grape (a variety of *Vitis riparia* Michx.): as "...of the cultivated grapes the larva flourishes on thin-leaved varieties like the Delaware" by Isely (1920: 13)

- *Concord* grape (a variety of *Vitis labrusca* L.): as "Larvae were frequently found on Concord grapes in the field but the majority of the newly hatched larvae placed on Concord leaves in cages failed to pass the first instar. After this instar was passed little difficulty was experienced in carrying them to the adult stage." and "but does not favor thick-leaved sorts like the Concord" *vide* Isely (1920: 13).

- Cultivated grape (= *Vitis vitifera* L.): Isely (1920: 13); Gibson (1925: 24; 1926: 578).

- *Parthenocissus quinquefolia* (L.) Planch. (or as "Virginia Creeper"): Gibson (1925: 24, 1926: 578), Wilcox (1979: 16); Downie and Arnett (1996: 1374).

- *Parthenocissus* sp.: Wilcox (1979: 16); Downie and Arnett (1996: 1374).

- *Vitis* spp. (or as "Grape"): Wilcox (1979: 24); as "wild and cultivated grape" by Isely (1920: 13); Downie and Arnett (1996: 1374).

- *Vitis riparia* Michx. (Wild Grape): (Gibson 1925: 24).

b) Accidental host-plants mentioned in the literature.

- None found so far.

c) True host-plants recorded on the labels of specimens examined

- "Grape *ampelopsis*" (*Parthenocissus quinquefolia* (L.) Planch.): 1 record.

- "Cultivated Grape" (*Vitis vitifera* L.): 2 records.

- "Grape", "Grapevine", (*Vitis* spp.): 26 records

- *Parthenocissus quinquefolia* (L.) Planch. (Virginia Creeper, "Virginia Grape"): 28 records.

- "Wild Grape", "Wild Vitis" (*Vitis riparia* Michx.): 14 records.

d) Accidental host-plants recorded on the labels of specimens examined:

- *Amelanchier* sp. (blooming): 1 record.

- "Asclépiade" (*Asclepias syriaca* L.): 1 record.

- *Avena sativa* L.: 1 record.

- *Barbarea vulgaris* R. Br.: 1 record.

- *Carex* sp.: 1 record.

- *Cassandra* sp. (probably *calyculata* (L.) D. Don): 1 record.

- *Cornus* sp.: 1 record.

- *Cornus stolonifera* Michx.: 7 records.

Note: Wild Grape and Virginia Creeper often grow intermixed with Dogwood in Ontario and Québec where the beetles with this host-plant were collected. This may explain the large number of records of this accidental host.

- "Hawthorn" (*Crataegus* sp.): 1 record.

- *Nasturtium* sp.: 1 record.

- "Plants" (undetermined): 2 records.

- *Populus* sp.: 2 records.

- "Red Cedar" (*Juniperus virginiana* L.): 1 record.

- "Spurge" (*Euphorbia cyparissias* L.): 1 record.

- "Sunflower" (*Helianthus* sp.): 1 record.

- *Populus tremuloides* (Michx.): 1 record.

- *Prunus* sp.: 1 record.

- *Salix* sp. : 1 record.

- *Salix lucida* Mühl. (= Shining Willow): 1 record.

- *Scirpus* sp.: 1 record.

- *Solidago* sp.: 3 records.

- *Tilia americana* L. (= Tilleul d'Amérique, Basswood): 1 record.

- "undetermined grass": 1 record.

- "Wheat" (*Triticum aestivum*. L.): 1 record.

Biology. *Altica woodsi* overwinters in the adult stage. Overwintering adults hide in leaf litter, under the rough bark of trees or in the crevices of wood not far from their host plants, and look for winter quarters at the time the leaves of the grape start to fall. According to the information recorded on the labels of specimens examined, habitats recorded included deciduous, poplar, beech/maple, pine, mixed and flood plain forests, the edges of forests, lakes, rivers, creeks, ditches and roads, as well as vineyards, gardens, picnic areas, and abandoned fields.

Most of the biological information dealing with *Altica woodsi* comes from the original work of Isely (1920), and the contribution of Gibson (1925) in Ottawa, Ontario. Earlier observations exist but they were published under different species names (*A. chalybea* Illiger, *A. ignita* Illiger, etc.; see Literature review). Peairs (1941) claimed that adults of *A. woodsi* emerged from hibernation in early spring and fed on the foliage that was already expanded. However, according to Lugger (1899), and from my own observations made in the Ottawa area in spring 2001 and 2002, overwintering adults were chewing into the leaf buds of the wild grapes before they opened, just as those of *A. chalybea* do. They usually attack cultivated grapes soon after if vineyards are present in the surroundings. Hibernated adults feed for 1-2 weeks before mating and ovipositing.

As correctly reported by Gibson (1925), eggs are usually laid singly along the veins on the underside of leaves, but sometimes, two or three may be deposited together. The eggs are pale yellow in colour, typically with a narrow line of feces stuck on one side. According to Isely (1920), the largest number of eggs deposited by a female in a single day was 31. Females kept under observation by this author deposited 37-181 eggs during their lifetime, for an average of 102.5 eggs per female. Incubation time depended considerably on weather conditions, but, in general, eggs hatched within 2 weeks.

Newly hatched larvae eat only the under surface of leaves, whereas larger ones make holes through the blade (Figure 11a). There are 3 larval instars. Each instar lasts about 6 days (Isely 1920). Larvae prefer thin-leaved grape varieties, and do not move readily from one leaf to another. The larval period lasts 18 days.

Pupation occurs underground, 1-2 cm under the surface, in a pupal chamber made of packed soil material. The pupation period lasts about a week, but may vary considerably according to the local weather conditions. The pupa is yellow.

First adults of the new generation appear at the end of July and beginning of August. Like large larvae, they typically make irregular feeding marks on leaves (Figure 11b). Adults feed on their host for the rest of the season but without mating or ovipositing. They look for shelters with the arrival of the first cold night in the fall.

According to my observations there is only one generation a year in the Ottawa area, but Gibson (1925) reported that females of the new generation maintained in cages produced eggs in mid-August, suggesting two generations, at least in some years.

Parasites. They probably exist, but none have yet been identified.

Predators. In Aylmer, Québec (north of Ottawa, Ontario), adults of the carabids *Lebia moesta* LeConte and *L. viridis* Say were collected by myself in company of adults of *Altica woodsi*.

Economic importance. Damage to grapes has been reported as minor since *Altica woodsi* feed exclusively on the developed leaves of grape (Isely 1920; Peairs 1941). However, my colleague, Henri Goulet, lost all of his Concord grapes in summer 2001 due to this pest. I have observed spring adults during the first week of May 2001, and in mid-April in 2002, feeding on opening buds of wild grape along the Ottawa River. In two vineyards of the Eastern Townships in Québec, adults of both *A. woodsi* and *A. chalybea* were collected on canes in early spring 2001, but it could not be determined whether they were feeding on leaf or fruit buds (Martin Trudeau, pers. comm.).

Common names. Lugger (1899: 243) first proposed the popular name “*Lesser grapevine flea-beetle*” but erroneously applied it to *Altica ignita*. The name was later used by Isely (1920: 11) when he described *A. woodsi*, and accepted by Herrick (1925: 177), Gibson (1925: 23, 1926: 578), and Peairs (1941: 323). Surprisingly, it is not included in the lists of the common names of insects produced by the Entomological Society of America (Muesebeck 1942; Werner 1982; Stoetzel 1989; Bosik 1997).

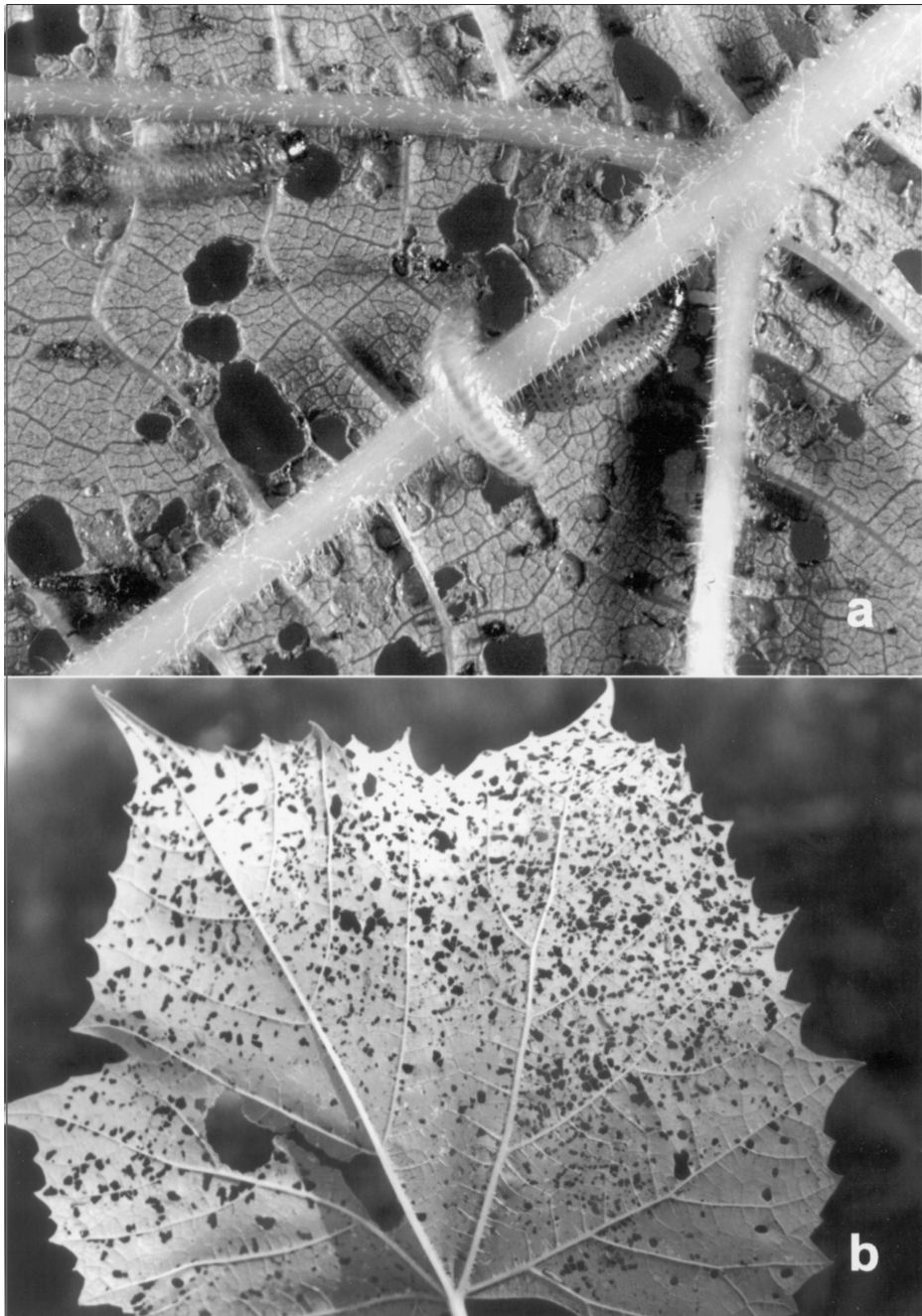


FIGURE 11. a, underside of a leaf of *Vitis riparia* damaged by larvae of *Altica woodsi*; b, leaf of the same plant typically riddled with holes by adults of the new generation and large larvae.

Benoit (1975: 26, 1985: 10) proposed the French name “*Altise de Woods*” for *Altica woodsi*, in reference to the species name *woodsii* with the English equivalent “*Wood’s flea beetle*.” Unfortunately, few people are aware that Woods was an entomologist who studied the biology of *Altica*, so it is not a useful common name. Alternatively, since most *Altica* species are mono- or oligophagous, it is usually easier to identify them indirectly by their host-plants than directly by their morphological external features. Consequently, the proper French equivalent of the *Lesser grapevine flea beetle* should be “*Petite altise de la vigne*”.

Conclusion

Although both *Altica chalybea* and *A. woodsi* develop on the same host-plants (*Vitis*, *Parthenocissus*), slight differences exist in their habits that reduce interspecific competition. For instance, *A. chalybea* lays its eggs on buds or in bark crevices, whereas *A. woodsi* does so on the underside of leaves later in the season. More data are needed to confirm early observations of authors on egg hatching and larval development of *A. chalybea* which are supposed to occur 2-3 weeks later in *Altica woodsi*.

With regards to larval habits, the larvae of *Altica chalybea* are usually found on the upperside of leaves according to authors, whereas those of *A. woodsi* commonly develop on the underside. However, rarely were larvae of *A. chalybea* found on the upper surface in rearings maintained in the laboratory in 2002. Also, it is not known whether the larvae of both species can feed together on the same leaf in nature. More information is also needed on the morphology of the larvae since it is presently impossible to recognize individual instars or separate larvae of both species using the existing descriptions or illustrations (Slingerland 1898; Isely 1920). Such information is essential for understanding how the larvae of two species can share the same food source. Do they feed on the same plant without serious competition by sharing different portions of the canes? Within a given habitat, or vineyard, do they develop in different areas to reduce competition? At present, the answers to these questions are still unknown. The same lack of information applies to the pupae. Finally, an extensive search for parasites would be of great interest for pest management in vineyards.

Acknowledgments

I wish to thank my colleagues Drs. Yves Bousquet and Henri Goulet for their comments, and Diana Barnes and Lisa Bartels for checking the data in the databases and in the text. My thanks are also extended to Go Sato for inking the figures, and Henri Goulet for the photographs of the adults and the anonymous reviewers for their very useful comments, corrections, and suggestions.

References

- AAEE. 1925. Common names of insects approved for general use by the American Association of Economic Entomologists. *Journal of Economic Entomology* 18: 521-545.
- Balsbaugh, E. and K.L. Hays. 1972. The Leaf Beetles of Alabama (Coleoptera: Chrysomelidae). *Bulletin of the Agricultural Experiment Station, Auburn University* No 441. 223 pp.
- Bell R. 1880 (1879). Report on explorations on the Churchill and Nelson rivers and around God’s and Island Lakes, 1879. *Geological Survey of Canada, Appendix V*, pp. 65c-66c.
- Belton, E.M. and D.C. Eidt. 1996 (1993). Noms communs des insectes au Canada. *Entomological Society of Canada/ Société d’Entomologie du Québec*. 110 pp.

- Benoit, P. 1975. French Names of Insects in Canada with Corresponding Latin and English Names (fourth edition). Agriculture Québec. Publication QA38-R4-30. 214 pp.
- Benoit, P. 1985. *Nomenclatura Insectorum canadensis* (5e édition). Service canadien des forêts, Centre de recherches forestières des Laurentides. 299 pp.
- Bethune, C.J.S. 1893 [1892]. The president's annual address. Twenty-Second Annual Report of the Entomological Society of Ontario for 1891, 22: 7-14.
- Bethune, C.J.S. 1898 [1897]. Notes on the season of 1897. Twenty-Eighth Annual Report of the Entomological Society of Ontario for 1897, 28: 31-34.
- Bethune, C.J.S. 1907. Common insects affecting fruit-trees. Bulletin of the Ontario Agricultural College No. 158. 47 pp.
- Blackwelder, R.E. 1939. Fourth Supplement, 1933 to 1939 (inclusive), to the Leng Catalogue of Coleoptera of America, North of Mexico. Mount Vernon, New York: John D. Sherman Jr. 146 pp.
- Blatchley, W.S. 1896. Notes on the winter insect fauna of Vigo County, Indiana. VII. Psyche 7: 434-437.
- Blatchley, W.S. 1910. An Illustrated Descriptive Catalogue of the Coleoptera or Beetles Known to Occur in Indiana. Indianapolis: The Nature Publishing Co. 1385 pp.
- Blatchley, W.S. 1924. The Chrysomelidae of Florida. The Florida Entomologist 8: 17-46.
- Blunck, H. 1954. Tierische Schädlinge an Nutzpflanzen, 2. teil. Handbuch der Pflanzenkrankheiten, Fünfter Band. Berlin, Hamburg: Paul Parey. 599 pp.
- Borror, D.J., C.A. Triplehorn and N.F. Johnson. 1989. An Introduction to the Study of Insects (sixth edition). Philadelphia: Saunders College Publishing. 875 pp.
- Bosik, J.J. 1997. Common names of insects and related organisms. Committee on Common Names of Insects. Lanham, Maryland: Entomological Society of America. 232 pp.
- Brimley, C.S. 1938. The Insects of North Carolina. Raleigh: North Carolina Department of Agriculture, Division of Entomology. 560 pp.
- Britton, W.E. 1898 (1897). Notes of the season. Twenty-first Annual Report of the Connecticut Agricultural Experiment Station for 1897, pp. 314-319.
- Britton, W.E. 1920. Checklist of the Insects of Connecticut. State of Connecticut, State Geological and Natural History Survey Bulletin 31. 397 pp.
- Britton, W.E. 1926 (1925). Twenty-fifth report of the State Entomologist of Connecticut. Bulletin of the Connecticut Agricultural Experiment Station 275: 1-272.
- Britton, W.E. 1927 (1926). Twenty-fifth report of the State Entomologist of Connecticut. The Review of Applied entomology (series A: Agricultural) 14: 439-440.
- Britton W.E. 1928. Twenty-eighth report of the State Entomologist of Connecticut. Bulletin of the Connecticut Agricultural Experiment Station 305: 669-708.
- Caesar, L. 1914 (1913). Insects of the season in Ontario. Forty-Fourth Annual Report of the Entomological Society of Ontario 44: 75-84.
- Caesar, L. 1916 (1915). Insects of the season in Ontario. Forty-Sixth Annual Report of the Entomological Society of Ontario 46: 29-33.
- Caesar, L. 1927. Grape insects, pp. 44-51 in The Grape in Ontario by E.F. Palmer and J.R. van Haarlem (authors). Ontario Department of Agriculture, Horticultural Experimental Station, Vineland Station. Bulletin 328, 52 pp.
- Caesar, L. and W.A. Ross. 1926 (1925). Insects of the season in Ontario. Fifty-Sixth Annual Report of the Entomological Society of Ontario 56: 13-17.
- Campbell, J.M., M.J. Sarazin and D.B. Lyons. 1989. Canadian Beetles (Coleoptera) Injurious to Crops, Ornamentals, Stored Products, and Buildings. Agriculture Canada, Research Branch, Publication 1826. 491 pp.

- Chagnon, G. 1917. A Preliminary List of the Insects of the Province of Quebec. Report of the Quebec Society for the Protection of Plants - Part III Coleoptera (suppl.). 277 pp.
- Chagnon, G. 1938. Contribution à l'étude des Coléoptères de la province de Québec. *Le Naturaliste canadien* 65: 157-166.
- Chagnon, G. 1940. Contribution à l'étude des Coléoptères de la province de Québec. Montréal: Département de Biologie de l'Université de Montréal. 385 pp.
- Chagnon, G. and A. Robert. 1962. Principaux Coléoptères de la province de Québec. Les Presses de l'Université de Montréal, Montréal. 440 pp.
- Clark, S.M. 2000. An Annotated List of the Leaf Beetles of West Virginia (Coleoptera: Orsodacnidae, Megalopodidae, Chrysomelidae exclusive of Bruchinae). Occasional Publications of the West Virginia Department of Agriculture. Charleston, West Virginia. 93 pp.
- Comstock, J.H. 1880 (1879). Report of the Entomologist. pp. 185-348 in Report of the Commissioner of Agriculture for the Year 1879. Washington, Government Printing Office. 611 pp.
- Cooper, J.R. 1922. Commercial grape growing. *The Review of Applied Entomology*. Series A: Agricultural 10: 388.
- Couper, W. 1855. Canadian Coleoptera in the collection of Fred. H. Ibbetson. *The Canadian Journal, a repertory of industry, science and art*, September 1855: 325-327.
- Couper, W. 1883. Coleoptera found in the province of Quebec. *The Canadian Sportsman and Naturalist* 3: 219-220.
- Dean, G.A. 1930. Insects injurious to small fruits. *The Biennial Report of the Kansas State Horticultural Society* 40: 137-155 (Contribution No. 378 from the Department of Entomology).
- Dearborn, R.G. and C.P. Donahue. 1993. *The Forest Insect Survey of Maine*. Maine Forest Service, Department of Conservation. Insect and Disease Division. Technical Report No. 32. 101 pp.
- Downie, N.M and R.H. Arnett. 1996. *The Beetles of Northeastern North America*. Gainesville, Florida: The Sandhill Crane Press. Volume II, pp. 891-1721.
- Duckett, A.B. 1920. Annotated list of *Halticini*. *Bulletin of the University of Maryland Agricultural Experiment Station* No. 241: 111-155.
- Ebeling, W. 1959. *Subtropical Fruit Pests*. University of California, Division of Agricultural Science. Los Angeles, California. 436 pp.
- Engelmann, I.G. 1869. The North American grapes. *The American Naturalist* 2: 320-323.
- Eyer, J.R. and W.A. McCubbin. 1926. Grape insects and diseases. *Bulletin of the Pennsylvania Department of Agriculture* 9: 1-27 (General Bulletin No. 433).
- Fall, H.C. 1920. On certain species of *Haltica*, old and new. *Psyche* 27: 101-111.
- Felt, E.P. 1900a (1899). 15th report of the state entomologist - 1899. *Bulletin of the New York State Museum* 6: 551-653.
- Felt, E.P. 1900b. Illustrated descriptive catalogue of some of the more important injurious and beneficial insects of New York state. *Bulletin of the New York State Museum* 8 (No. 37): 1-52.
- Felt, E.P. 1901 (1900). 16th report of the state entomologist - 1900. *Bulletin of the New York State Museum* 7: 951-1063.
- Felt, E.P. 1902 (1901). 17th report of the state entomologist - 1901. *Bulletin of the New York State Museum* 8: 699-925.
- Fitch, A. 1859a (1856-1858). Third [1856], fourth [1857], and fifth [1858] reports on the noxious, beneficial and other insects of the state of New York. Albany, New York: C. Van Benthuysen Printer. pp. 1-172 (3rd), 1-67 (4th), 1-74 (5th) [Issued separately with title and index].
- Fitch, A. 1859b. Beetles infesting grape-vines. *The Country Gentleman* 14: 171
- Fletcher, J. 1884. Report of the Entomologist for 1884. Ottawa: Department of Agriculture. pp. 1-7.

- Fletcher, J. 1885. Report of the Entomologist for 1884. Ottawa: Department of Agriculture. pp. 7-34.
- Forsythe, H.Y. and G.W. Still. 1969. Insects injurious to grapes in Ohio. Ohio Agricultural Research Center - Research Summary 38: 33-36.
- Geoffroy, E.L. 1762. Histoire abrégée des insectes qui se trouvent aux environs de Paris, dans laquelle ces animaux sont rangés suivant un ordre méthodique. Volume 1, 523 pp. Volume 2, 690 pp.
- Gibson, A. 1913. Flea-beetles and their control. Dominion of Canada, Department of Agriculture, Experimental Farms, Division of Entomology. Entomological Circular No. 2. 11 pp.
- Gibson, A. 1914. The injurious flea-beetles of the prov. of Quebec. 6th Report for the Protection of Plants, 6: 25-30.
- Gibson, A. 1925. Notes on the occurrence of the Lesser Grapevine Flea-Beetle in Canada. Fifty-Fifth Annual Report of the Entomological Society of Ontario (for) 1924, 55: 23-24.
- Gibson, A. 1926 (1925). Notes on the occurrence of the Lesser Grapevine Flea-beetle in Canada. The Review of Applied Entomology (Series A: Agricultural) 13: 578.
- Gibson, A. 1928. Insects of the Flower Garden and their Control. Dominion of Canada, Department of Agriculture. Entomological Bulletin (N.S.) No. 29. 56 pp.
- Gibson, A. 1934a. Insects of the Flower Garden and their Control. Dominion of Canada, Department of Agriculture. Entomological Bulletin (N.S.) No. 99. 69 pp.
- Gibson, A. 1934b. Insectes qui nuisent aux fleurs et moyens de les détruire. Ottawa: Miniature fédéral de l'Agriculture. Bulletin No. 39. 69 pp.
- Gleason, H.A. 1963. The New Britton and Brown Illustrated Flora of the Northeastern United States and Adjacent Canada. For the New York Botanical Garden. New York: Hafner Publishing Co. Volume 2. 655 pp.
- Gott, B. 1878 (1877). Report on some of our fruit insect enemies. Annual Report of the Entomological Society of Ontario 1877: 40-47.
- Gott, B. 1879 (1878). Notes of the year. Annual Report of the Entomological Society of Ontario for the year 1878: 55-59.
- Hamilton, J. 1895. Catalogue of the Coleoptera of Southwestern Pennsylvania, with notes and descriptions. Transactions of the American Entomological Society 22: 317-353.
- Harrington, W.H. 1882a. Report of the entomological branch for the season 1881. Transactions of the Ottawa Field-Naturalists' Club 1: 24-26.
- Harrington, W.H. 1882b. Chrysomelidae — leaf-eaters. Annual Report of the Entomological Society of Ontario for 1881: 53-62.
- Harrington, W.H. 1884. List of Ottawa Coleoptera. Transactions of the Ottawa Field-Naturalists' Club 2: 67-85.
- Harris, T.W. 1833. VIII. Insects. Pp. 566-595 in E. Hitchcock (Ed.), Part, IV, A catalogue of the animals and plants in Massachusetts. Report on the geology, mineralogy, botany, and zoology of Massachusetts. Amherst, J.S. & C. Adams. 692 pp.
- Harris, T.W. 1835. VIII. Insects. Pp. 33-82 in E. Hitchcock (Ed.), Catalogue of the Animals and Plants in Massachusetts, with a copious index. Amherst. 142 pp.
- Harris, T.W. 1841. Report on the Insects of Massachusetts Injurious to Vegetation. Cambridge: Folsom, Wells, and Thurston. 459 pp.
- Harris, T.W. 1842. Treatise on some of the Insects of New England which are Injurious to Vegetation. Cambridge: John Owen. 459 pp.
- Harris, T.W. 1852. A Treatise on some of the Insects of New England which are Injurious to Vegetation (second edition). Boston: White & Potter. 513 pp.

- Harris, T.W. 1854. Report on Insects and Diseases Injurious to Vegetation. Boston: Tress of the Franklin Printing House. 11 pp. (printed separately).
- Harris, T.W. 1862. A Treatise on Some of the Insects Injurious to Vegetation (a new edition). Boston: Crosby and Nichols. 640 pp., 8 coloured plates.
- Hartzell, F.Z. 1910. A preliminary report on grape insects. Bulletin of the New York Agricultural Experiment Station, Geneva 331: 481-581.
- Hartzell, F.Z. 1915. The grapevine flea-beetle (*Haltica chalybea* Illiger). International Congress of Viticulture. Report of the Committee on Publication, pp. 201-208.
- Hartzell, F.Z. 1924. Grape insects. Proceedings of the annual Meeting of the New York State Horticulture society, pp. 78-87.
- Hatch, M.H. Ortenburger A.I. 1926. Records and new species of Coleoptera from Oklahoma. Publications of the University of Oklahoma Biological Survey 2: 7-14.
- Heikertinger, F. and E. Csiki. 1940. Pars 166 and 169. Chrysomelidae: Halticinae. in *Coleopterorum Catalogus*. Junk, W. and S. Schenkling (Eds). W. Junk's-Gavenhage. 635 pp.
- Herrick, E.C. 1835. On the *Chrysomela vitivora*. The American Journal of Science and Arts 27: 420.
- Herrick, G.W. 1925. Manual of Injurious Insects. New York: Henry Holt and Company. 489 pp.
- Hewitt, C.G. 1915. Report of the Dominion Entomologist for the Year ending March 31, 1915. Ottawa: Canada Department of Agriculture. 40 pp.
- Horn, G.H. 1889. A synopsis of the Halticini of Boreal America. Transactions of the American Entomological Society 16: 163-320.
- Horn, G.H. 1893. The Galerucini of Boreal America. Transactions of the American Entomological Society 20: 57-144.
- ICZN 1999. International Code of Zoological Nomenclature, Fourth Edition. London: The Natural History Museum. 306 pp.
- Illiger, K. 1807. Verzeichniss der Arten der Flokäufer, Halticae, in der Hellwig-Hoffman-seggischen Sammlung, mit Beschreibung der neuen, und Bezeichnung der übrigen Arten. Magazin für Insektenkunde 6: 81-188.
- Isely, D. 1920. Grapevine flea-beetles. Bulletin of the United States Department of Agriculture 901: 1-27.
- Kirk, V.M. 1969. A List of Beetles of South Carolina. Part 1 - Northern Coastal Plain. South Carolina Agricultural Experiment Station, Clemson University Technical Bulletin No. 1033. 124 pp.
- Kirk, V.M. 1970. A list of the beetles of South Carolina. Part 2 - Mountain, Piedmont, and Southern Coastal Plain. South Carolina Agricultural Experiment Station, Clemson University. Technical Bulletin No. 1038. 117 pp.
- Laplante, S. Y. Bousquet, P. Bélanger, C. Chantal. 1991. Liste des espèces de Coléoptères du Québec. Fabriques, Supplément 6. 136 pp.
- Larroe, J. 1862. The blue-grape beetle. The Country Gentleman 19: 382.
- Lasnier, J. M. Trudeau, N.J. Bostanian, C. Vincent, H. Goulet, L. LeSage. 2001. Les insectes ravageurs de la vigne au Québec. wysiwyg://1/http://res2.agr.gc.ca/stjean/recherche/vigne2_f.h.
- LeConte, J.E. 1824. Description of some new species of North American insects. Annals of the Lyceum of Natural History of New York 1: 169-173. plate XI, Figure 16.
- Leng, C.W. 1920. Catalogue of the Coleoptera of America, North of Mexico. Mount Vernon, New York: John D. Sherman, Jr. 470 pp.
- Leonard, M.D. 1928 (1926). A list of the insects of New York with a list of the spiders and certain other allied groups. Memoir of the Cornell University Agricultural Experiment Station 101: 1121 pp.

- LeSage, L. 1991. Family Chrysomelidae. Pp. 301-323 in Y. Bousquet (Ed.) Checklist of Beetles of Canada and Alaska. Ottawa: Agriculture Canada, Research Branch. Publication 1861/ E. 430 pp.
- LeSage, L. 1995. Revision of the costate species of *Altica* Müller of North America North of Mexico (Coleoptera: Chrysomelidae). The Canadian Entomologist 127: 295-411.
- LeSage, L. 2000. On the type series of *Altica chalybea* (Coleoptera: Chrysomelidae). Entomological News 111 (4): 233-237.
- LeSage, L. and J. Denis. 1999. The flea-beetles *Altica corni* Woods in North America (Coleoptera: Chrysomelidae, Alticinae). Pp. 533-544 in M.L. Cox (Ed.) Advances in Chrysomelidae biology. Leiden, Netherlands: Backhuys Publishers. Volume I, 671 pp.
- Linné, C. 1758. *Systema naturae*. 10th edition. Holmiae. Volume I, 824 pp.
- Lintner, J.A. 1888. Insect attacks and miscellaneous observations. Fourth report on the injurious and other insects of the state of New York 4: 19-147.
- Lintner, J.A. 1890. (B.) Contributions to the Department. Sixth report on the injurious and other insects of the state of New York 6: 186-190.
- Lintner, J.A. 1891. Entomological Contributions. Seventh report on the injurious and other insects of the state of New York 7: 331-356.
- Lintner, J.A. 1893. Contributions to the Department. Eighth report on the injurious and other insects of the state of New York for the year 1891 8: 296-30.
- Löding, H.P. 1945. Catalogue of the Beetles of Alabama. Geological Survey of Alabama. Monograph 11. 172 pp.
- Lorenz, W. 1998. *Nomina Carabidarum*: A Directory of the Scientific Names of Ground Beetles. Tutzing, Germany: Privately published. 937 pp.
- Lowe V.H. 1898. Preliminary notes on the grape-vine flea-beetle. Bulletin of the New York Agricultural Experiment Station, Geneva 150: 263-265.
- Lugger, O. 1899. Beetles injurious to fruit-producing plants. Bulletin of the University of Minnesota Agricultural Experiment Station 66: 85-331.
- McMillan, C. 1888. Twenty-two common insects of Nebraska. Bulletin of the Agricultural Experiment Station of Nebraska 1: 33-133.
- MacNay, C.G. 1955 (1954). Summary of important insect infestations, occurrences, and damage in Canada in 1954. Annual Report of the Entomological Society of Ontario 85: 61-91.
- MacNay, C.G. 1956 (1955). Summary of important insect infestations, occurrences, and damage in Canada in 1955. Annual Report of the Entomological Society of Ontario 86: 104-127.
- Marlatt, C.L. 1896 (1895). The Principal Insect Enemies of the Grape. Pp. 385-404 in Yearbook of the United States Department of Agriculture, Washington. 656 pp.
- McGrew, J.R. and G.W. Still. 1968. Control of grape diseases and insects in the Eastern United States. USDA Farmer's Bulletin No. 1893: 1-27.
- McGrew, J.R. and G.W. Still. 1979. Control of Grape Diseases and Insects in the Eastern United States. USDA Farmer's Bulletin #1893 (revised). 35 pp.
- Melsheimer, F.E. 1806. A Catalogue of Insects of Pennsylvania. Part First. Hanover, York co: W.D. Lepper. 60 pp.
- Melsheimer, F.E. 1853. Catalogue of the described Coleoptera of the United States. Washington: Smithsonian Institution (revised by S.S. Haldeman and J.L. LeConte). 172 pp.
- Muesebeck, C.F.W. 1942. Common names of insects approved by the American Association of Economic Entomologists. Journal of Economic Entomology 35: 83-101.
- Neal, J.C. 1890. Entomological notes. Bulletin of the Florida Agricultural Experiment Station 9: 1-16.

- Osborn, H. 1888 (1887). Report upon the insects of the season in Iowa. Pp. 154-164, in C.V. Riley, Report of the Entomologist. Washington: Government Printing Office. 178 pp
- Peairs, L.M. 1941. Insect pests of farm, garden, and orchard. New York: John Wiley & Sons. 549 pp.
- Provancher, L. 1877. Petite faune entomologique du Canada. Québec: Des Presses de C. Darveau. 785 pp.
- Quaintance, A.L. and C.L. Shear. 1907. Insect and fungus enemies of the grape east of the Rocky Mountains. United States Department of Agriculture, Farmer's Bulletin 284: 1-48.
- Quaintance, A.L. and C.L., Shear. 1921. Insect and Fungous Enemies of the grape. United States Department of Agriculture, Farmers' Bulletin 1220. 75 pp.
- Quaintance, AL, Shear CL. 1922. Insect and fungous enemies of the grape. The review of applied entomology 10: 239.
- Reh, L. 1913. Die tierischen Feinde. Handbuch der Pflanzenkrankheiten, Dritter Band. Berlin: Paul Parey Verlagsbuchhandlung. 774 pp.
- Riley, C.V. 1868. The cucumber flea-beetle (*Haltica cucumeris* Harris). The American Entomologist 1: 27.
- Riley, C.V. 1870a. Grape-vine Flea-beetle. The American Entomologist and Botanist 2: 309.
- Riley, C.V. 1870b. Insects injurious to the grape-vine. The American Entomologist and Botanist 2: 327-328.
- Riley, C.V. 1880. The grapevine flea-beetle (*Graptodera chalybea* Illig.). The American Entomologist 3: 183-184.
- Riley, C.V. 1881. General index and supplement to the nine reports of the insects of Missouri. Bulletin of the United States Entomological Commission. 6: 1-177.
- Riley, C.V. 1889. A grape-vine flea-beetle in the Southwest. Insect Life 1: 221.
- Ross, W.A. 1926a. Niagara Peninsula grape insects. The Canadian Horticulturist 43: 30.
- Ross, W.A. 1926b (1925). Niagara Peninsula grape insects. The review of Applied Entomology. Series A: Agricultural 13: 188.
- Ross, W.A. and L. Caesar 1925. Insects of the season. Fifty-fifth Annual Report of the Entomological Society of Ontario 55: 84-88.
- Ross W.A. and T. Armstrong. 1949. Common grape insects in Ontario and their control. Canada Department of Agriculture, Science Service, Division of Entomology. Processed Publication Series 26: 1-10.
- Saunders, W. 1871 (1870). Insects injurious to the grape. First Annual Report of the Entomological Society of Ontario 1: 94-117.
- Saunders, W. 1872 (1871). Insects injurious to the grape. First Annual Report of the Entomological Society of Ontario 2: 357-361.
- Saunders, W. 1883. Insects injurious to fruits. Philadelphia: J.P. Lippincott & co. 436 pp.
- Saunders, W. 1884. Annual address of the president of the Entomological Society of Ontario. The Canadian Entomologist 16: 204-213.
- Saunders, W. 1885 (1884). Annual address of the president. Fifteenth Annual Report of the Entomological Society of Ontario 15: 15-21.
- Saunders, W. 1889. Insects Injurious to Fruits. J.P. Lippincott & co., Philadelphia. 436 pp. (second edition).
- Saunders, W. 1900. Insects Injurious to Fruits. J.P. Lippincott & co., Philadelphia. 436 pp. (second edition, new printing).
- Schwarz, E.A. 1892. Note on the food-habits of some halticids. Proceedings of the Entomological Society of Washington 2: 182-184.

- Schwarz, E.A. 1895. Some notes on Melsheimer's catalogue of the Coleoptera of Pennsylvania. *Proceedings of the Entomological Society of Washington* 3: 134-138.
- Scoggan, H.J. 1978. The flora of Canada. National Museum of Natural Sciences, National Museums of Canada, Ottawa, Ontario. *Publications in Botany* 7: 547-1115 (part 3).
- Slingerland, M.V. 1898. The grape-vine flea beetle. *Bulletin of the Cornell University Agricultural Experiment Station (Entomological Division)* 157: 189-213.
- Slingerland, M.V. and C.R. Crosby. 1914. *Manual of Fruit Insects*. New York: The MacMillan Company. 503 pp.
- Smith, J.B. 1890. *Catalogue of Insects found in New Jersey*. 486 pp.
- Smith, J.B. 1900 (1899). *Insects of New Jersey — a List of the species Occurring in New Jersey, with Notes on those of Economic Importance*. Printed as a supplement to the 27th Annual Report of the State Board of Agriculture. Trenton, New Jersey. 755 pp.
- Smith, J.B. 1910 (1909). *Annual Report of the New Jersey State Museum Including a Report on the Insects of New Jersey*. Trenton: MacCrellish & Quigley State Printers. 888 pp.
- SPPQ. 1947. *Société de Protection des Plantes du Québec. Liste officielle des noms français des insectes d'importance économique au Canada*. Québec: Ministère de l'Agriculture du Québec. 66 pp.
- SPPQ. 1952. *Société de Protection des Plantes du Québec. Liste officielle des noms français des insectes d'importance économique au Canada*. Québec: Ministère de l'Agriculture du Québec. 73 pp.
- SPPQ. 1964. *Société de Protection des Plantes du Québec. Noms français des insectes au Canada et noms latins et anglais correspondants*. Québec: Ministère de l'Agriculture du Québec. Publication 295, 102 pp.
- Staines, C.L. and S.L. Staines. 1998. The leaf beetles (Insecta: Coleoptera: Chrysomelidae): potential indicator species assemblages for natural area monitoring. Pp. 233-244, in *Conservation of Biological Diversity: A Key to the Restoration of the Chesapeake Bay and beyond*. G.D. Theres (Ed.). Annapolis, Maryland: Maryland Department of Natural Resources. 344 pp.
- Still, G.W. and R.W. Rings. 1965. A guide to insect pests and damage to eastern grapes. Ohio Agriculture Research Development Center. Research summary - Fruit Crop Research 2: 17 - 20.
- Still, G.W. and R.W. Rings. 1973. *Insect and mite pests of grapes in Ohio*. Ohio Agricultural Research and Development Center, Wooster, Ohio. Research Bulletin 1060. 30 pp.
- Stoetzel, M.B. 1989. *Common Names of Insects and Related Organisms*. Committee on Common Names of Insects. Lanham, Maryland: Entomological Society of America. 199 pp.
- Sutherland, D.W.S. 1978. *Common Names of Insects and Related Organisms (1978 revision)*. Committee on Common Names of Insects. Lanham, Maryland: Entomological Society of America. 132 pp.
- Syme, P.D. and K.L. Nystrom. 1988. *Insects and Mites Associated with Ontario forests: Classification, Common Names, Main Hosts, Importance*. Canadian Forestry Service, Great Lakes Forest Centre. Information report O-X-392. 131 pp.
- Taschenberg, E.F. and H. Riedl. 1985. Grape flea beetle *Altica chalybea* (Illiger) [Grape Insect IPM, Insect Identification Sheet No. 6]. in Appendix 2 of Weigle, T. and J. Kovach. 1995 (Eds.). *Grape IPM in the Northeast*. Cornell Cooperative Extension. New York State Integrated Pest Management Program No. 211.
- Thomas, D. 1834. Some account of the *Chrysomela vitivora*, (with an engraving). *American Journal of Sciences and Arts (also known as Silliman's Journal of Sciences)* 26: 113-116.
- Thomas, J.J. 1906. *The American fruit culturist*. Orange Judd Company, New York. 220 pp.

- Townsend, C.H.T. 1891. A preliminary account of some insects injurious to fruits. Bulletin of the New Mexico Agriculture Experiment Station 3: 1-19.
- Walsh, B.D. 1867. The grape-vine *Fidia*. Practical Entomology 2: 87-88.
- Walsh, B.D. and C.V. Riley. 1868. The cucumber flea-beetle (*Haltica cucumeris* Harris). The American Entomologist 1: 27.
- Weigle, T. and J. Kovach. 1995. Grape IPM in the Northeast. Cornell Cooperative Extension. New York State Integrated Pest Management Program No. 211 [pages not consecutively paginated].
- Werner, F.G. 1982. Common Names of Insects and Related Organisms. Committee on Common Names of Insects. Lanham, Maryland: Entomological Society of America. 132 pp.
- Wickham, H.F. 1911. A list of the Coleoptera of Iowa. University of Iowa, Bulletin of the Laboratory of Natural History (N.S.) 6(1): 1-40.
- Wilcox, J.A. 1954. The leaf beetles of Ohio (Chrysomelidae): Coleoptera. Bulletin of the Ohio Biological Survey 43: 353-506.
- Wilcox, J.A. 1975 (1974). Checklist of the Chrysomelidae of Canada, United States, Mexico, Central America, and the West Indies (Red Version). Family 104. Chrysomelidae. Latham, New York: Biological Research, Institute of America, Inc. 166 pp.
- Wilcox, J.A. 1979. Leaf beetle host plants in northeastern North America (Coleoptera: Chrysomelidae). North American Beetle Fauna Project. The Biological Research Institute of America, Inc. 30 pp.
- Wilcox JA. 1983 (1975). Checklist of the Chrysomelidae of Canada, United States, Mexico, Central America, and the West Indies (Yellow Version). Family 104. Chrysomelidae. Latham, New York: Biological Research, Institute of America, Inc. 166 pp.
- Worden, S. 1862. An enemy to the grape — Inquiry. The Country Gentleman 19: 350.
- Zappe, M.P. 1928. Notes on fruit insects in 1928. Bulletin of the Connecticut Agricultural Experiment Station 305: 728-729.
- Zappe, M.P. 1930. Notes on fruit insects in 1928. Bulletin of the Connecticut Agricultural Experiment Station 17: 609.