

Advancing the  
Heart and Science  
of Healthcare



Erie Family Health Centers cared for more than 85,000 patients in 2022. We provide medical, dental and behavioral healthcare that is ranked #1 for quality in Illinois.



Shanika McIntosh, *(above)*  
Medical Assistant Team  
Leader at Erie Evanston/  
Skokie Health Center.

Erie patient Nelson Colon  
*(on the cover)* with his  
provider, Dr. Syed Mustafa  
Alavi.

**OUR MISSION**

Motivated by the belief that healthcare is a human right, we provide high quality, affordable care to support healthier people, families and communities.

**OUR VISION**

All people living their healthiest lives.

DEAR FRIENDS OF ERIE,

WHAT DO ARCHITECTS, CHEFS, AND GLASS BLOWERS HAVE IN COMMON? They must effectively combine elements of both art and science to achieve their final product. At Erie Family Health Centers, we believe that helping people live their healthiest lives requires a combination of *heart* and science. We work to balance both to provide the highest quality healthcare to our patients every day.

Erie providers follow clinical practice guidelines based on the best available current research, and are committed to improving clinical processes and quality. We partner with Chicago's leading hospitals so our patients can access cutting-edge specialty care. We teach medical residents, advanced practice nursing fellows and future medical assistants to practice high-quality care in community health settings. We use data to identify needs across our patient population and to develop responses to improve health outcomes.

At the same time, Erie sees our patients as whole and unique people, with talents, strengths, goals and the desire to be healthy in the fullest sense of what that means. We listen to what patients tell us is standing in their way of their goals, and connect them with mental health support, social services, financial assistance or supplies to help remove those barriers. We develop relationships with our patients to foster trust and nurture the belief in ongoing, preventative healthcare that leads to healthier lives. We see the unique strengths in the communities we serve and strive to employ people whose shared backgrounds with our patients informs and strengthens their care.

In the pages of this Annual Report, we share stories of how, with our partners and supporters fueling our work, we have emerged from the darkest days of the pandemic with an even deeper commitment to making access to quality healthcare more equitable in our communities. We are making investments in new tools and programs that give our patients more power and autonomy over their own healthcare. We are working to advance both the heart and science of healthcare.

Thank you for your generous support of our patients and communities.

In good health,



*Brian P. Marsella*  
Brian P. Marsella  
Chair, Board of Directors



*Lee Francis*  
Lee Francis, MD, MPH  
President and CEO

85,479

patients served received affordable, holistic primary care



11,489

patients received state-of-the-art oral care at Erie's four integrated dental care sites

20,268

oral health patient visits

345,052

total patient visits

262,597

in-person visits

82,455

telehealth visits

24,896

patient visits for behavioral healthcare, fully integrated into Erie's primary care

8,109

patients received care for diabetes

75%

of diabetic patients ages 18-74 maintained well controlled HbA1c levels

9,878

patients received care for hypertension

67%

of hypertensive patients maintained healthy blood pressure



2,439

Erie babies were delivered in 2022—**more babies than any other community health center in Illinois and more than 99% of health centers nationally.** Erie's prenatal team helps patients stay healthy during pregnancy, giving babies a great start in life.



BABIES BORN WITH NORMAL BIRTHWEIGHTS

|          |     |
|----------|-----|
| ERIE     | 95% |
| STATE    | 91% |
| NATIONAL | 91% |

PATIENTS RECEIVING PRENATAL CARE IN FIRST TRIMESTER

|          |     |
|----------|-----|
| ERIE     | 92% |
| STATE    | 80% |
| NATIONAL | 74% |



7

primary care centers

- ERIE DIVISION STREET
- ERIE EVANSTON/SKOKIE dental onsite
- ERIE FOSTER AVENUE dental onsite
- ERIE HEALTHREACH WAUKEGAN dental onsite
- ERIE HELPING HANDS
- ERIE HUMBOLDT PARK dental onsite
- ERIE WEST TOWN

5

school-based health centers

- ERIE AMUNDSEN
- ERIE CLEMENTE
- ERIE JOHNSON
- ERIE LAKE VIEW
- ERIE WESTSIDE

1

teen & young adult center

- ERIE TEEN CENTER

10

hospital partners

- ASCENSION ILLINOIS
  - > ST. FRANCIS HOSPITAL
  - > SAINTS MARY & ELIZABETH MEDICAL CENTER
- HUMBOLDT PARK HEALTH
- ANN & ROBERT H. LURIE CHILDREN'S HOSPITAL OF CHICAGO
- NORTHSHORE UNIVERSITY HEALTHSYSTEM
  - > EVANSTON HOSPITAL
  - > HIGHLAND PARK HOSPITAL
  - > SWEDISH HOSPITAL
- NORTHWESTERN MEDICINE
  - > LAKE FOREST HOSPITAL
  - > NORTHWESTERN MEMORIAL HOSPITAL
- VISTA HEALTH SYSTEM

ranked in top 10%

Last year, Erie was recognized among the top 10% of health centers nationally for our **clinical performance**. Even during the pandemic, Erie did not stop proactively caring for patients to prevent and manage chronic disease and other illness.

CERVICAL CANCER SCREENING

|          |     |
|----------|-----|
| ERIE     | 79% |
| STATE    | 59% |
| NATIONAL | 53% |

PEDIATRIC IMMUNIZATIONS

|          |     |
|----------|-----|
| ERIE     | 46% |
| STATE    | 33% |
| NATIONAL | 38% |



Erie serves communities from North Lawndale on Chicago's West Side all the way up to Waukegan. And we do it regardless of a patient's insurance status, immigration status, primary language or ability to pay.

>200

zip codes where Erie patients live

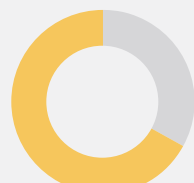
92

languages used in serving Erie patients

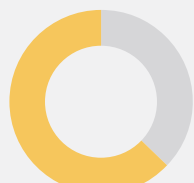
PATIENT DEMOGRAPHICS



70% HISPANIC/LATINO



67% INSURED BY MEDICAID



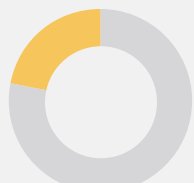
63% FEMALE



45% BEST SERVED IN A LANGUAGE OTHER THAN ENGLISH



43% UNDER THE AGE OF 18



22% UNINSURED

256

providers in training

9

post-graduate medical training programs



862

staff are employed at Erie, including 227 healthcare providers

110

staff members have been at Erie for >10 years



## Addressing food insecurity in Lake County

**A program that began at the start of the COVID pandemic to link Erie patients to the social resources they needed outside of the exam room has grown into a core component of Erie's patient care model.** Our Social Determinants of Health (SDOH) program significantly expanded its footprint this past year, but the goal remains the same: to help Erie's patients live their healthiest lives. In Lake County, for example, many Erie patients have told our SDOH teams at Erie HealthReach Waukegan Health Center that they are facing food insecurity. Last summer, Erie HealthReach Waukegan began a partnership with the Northern Illinois Food Bank. Once a month, the Food Bank sends a truck to provide free food to Erie patients and the community. The partnership has grown to provide approximately 200 families each month with food and healthy recipes. Erie's health education team is sharing de-identified patient data with the Northern Illinois Food Bank every six months—for example, A1C blood glucose levels (an indicator of diabetes)—to study the impact that access to healthy food has on a person's health.



## Expanding healthcare access through new digital health tools

Nearly 20 years ago, Erie became one of our nation's first health centers to switch from paper health records to an electronic system. This past year, in a major reinvestment in clinical quality and patient access, Erie transitioned to a new electronic health records (EHR) system called Epic. **This leading EHR technology gives Erie patients better, more convenient access to their health information.** Through MyChart, Epic's patient portal, patients can easily exchange messages with their providers, get lab test results, download referral forms, pay bills online, and much more—right from a smartphone or computer, at a time most convenient for them. Also, Erie can now better coordinate patient care with our many hospital partners on the same EHR system. In addition, Epic allows for more robust data management, helping Erie identify and engage patients at the highest risk for poor health outcomes, and understand where we can focus our efforts outside the exam room.



## Helping patients navigate virtual care

The pandemic exposed health equity gaps across the U.S., bringing to the forefront the need to increase access to quality healthcare for medically underserved populations. Many healthcare systems, including Erie, turned to digital tools and telehealth services to maintain patients' access to care. Digital literacy and internet connectivity are now fundamental to health as essential information, resources, and services are increasingly, and sometimes exclusively, accessible only online. **The Health Resources and Services Administration (HRSA) awarded Erie a competitive \$2 million grant to optimize virtual care for the communities we serve.** As part of that grant, Erie partnered with Northwestern University researchers on a needs assessment to learn more about patients' use of, interest in, and barriers to engagement in virtual care. We are now using the outcomes of our findings to inform how Erie can break down barriers to digital healthcare access, by promoting and educating patients about the new online patient portal, MyChart, telehealth, remote patient monitoring tools for diabetes, hypertension and other conditions, texting and other virtual supports. Funds are also supporting Digital Health Navigators to help patients with accessing, using and troubleshooting technology to support their health.



## A transformational investment in families on Chicago's West Side

Currently, life expectancy for residents of Chicago's West Garfield Park neighborhood is nearly 13 years less than residents of the Loop, just five miles away. In 2020, Erie was invited to join conversations with the Garfield Park Rite to Wellness Collaborative, a group of community residents, non-profit organizations and other community stakeholders seeking to decrease that disparity. **We are a proud anchor partner in the Collaborative's visionary project, the Sankofa Wellness Village, the 2022 recipient of the prestigious Chicago Prize.** This \$10 million grant from the Pritzker Traubert Foundation is a transformational investment in this historic, yet historically underinvested, community. The Sankofa Wellness Village is series of interconnected projects that include a community grocer initiative, a business incubator, a residential workforce development hub and arts center, and the Sankofa Village Wellness Center. Inside the Wellness Center, Erie will provide services alongside the YMCA of Metropolitan Chicago, Rush University Medical Center, West Side United, and Leaders Network Credit Union. Erie will operate a comprehensive community health center, expanding our high-quality primary healthcare and patient programs to families of West Garfield Park and the surrounding communities. We will have the capacity to serve more than 6,000 patients a year once the health center is up and running in the spring of 2025.



# Advancing the Heart and Science of Healthcare

Erie Family Health Centers practices the latest evidence-based medicine that results in quality outcomes that are among the highest in the nation. Erie follows the science — but we do it with heart. And ultimately, it's the compassion, the respect, the inclusion, the connection, that changes people's lives. Science helps us see something in the body that might be causing someone pain, and indicates a course of treatment. The heart compels us to see the whole person — their goals, and the things that might be standing in the way of those goals — and support them in living their healthiest lives.

Erie's Chief Clinical Officer  
Dr. Caroline Hoke with Erie  
patient Yvette Busia.

## HEALTHCARE PIPELINE

### WHEN ADILENY BOTELLO WAS JOB HUNTING AFTER COLLEGE GRADUATION, SHE WAS THRILLED TO LEARN A VERY FAMILIAR PLACE WAS HIRING.

Adileny's entire family is an Erie family. She was born at Erie, got all of her pediatric vaccinations, learned to manage her asthma, and received behavioral health support at Erie. Adileny's mother received prenatal care and case management support throughout her pregnancies, and used the nutrition guidance she learned from Erie's health promotions team to create healthier family meals. When Adileny's sister learned during a visit with her own Erie provider that Erie was expanding its Social Determinants of Health team, she referred Adileny. A few weeks later Adileny was helping patients just like herself, equipped with a lifetime of firsthand experience with and knowledge about the resources Erie has to offer. Adileny's situation is far from unique—a significant portion of Erie's employees have deep roots in the communities we serve. This shared background builds trust between patients and their healthcare teams, and helps ensure that Erie's care is culturally responsive and community-centered. As Erie expands care to new areas—for example to Waukegan in 2014 and soon, West Garfield Park on Chicago's West Side—our commitment to these communities extends to employment opportunities, simultaneously benefiting residents and patients.

*"I've come full circle, and it feels really good to work in my community—returning to the clinic where I was born to help patients who look like me, and come from similar backgrounds as me."*

#### ADILENY BOTELLO

Social Determinants of Health Care Coordinator and Erie Patient

AT ERIE HUMBOLDT PARK HEALTH CENTER—

**82%**  
of patients are Latino

**72%**  
of employees are Latino

AT ERIE JOHNSON SCHOOL-BASED HEALTH CENTER—

**69%**  
of patients are Black

**63%**  
of employees are Black



ABOVE. Adileny Botello, Social Determinants of Health Care Coordinator, takes pride in her work connecting patients with resources available at Erie and their communities.

RIGHT. Adileny grew up coming to Erie, along with her entire family. Three-year-old Adileny enjoyed a day at the Adler Planetarium with her sister, Alejandra Garcia, and mother, Marisol Arevalo.

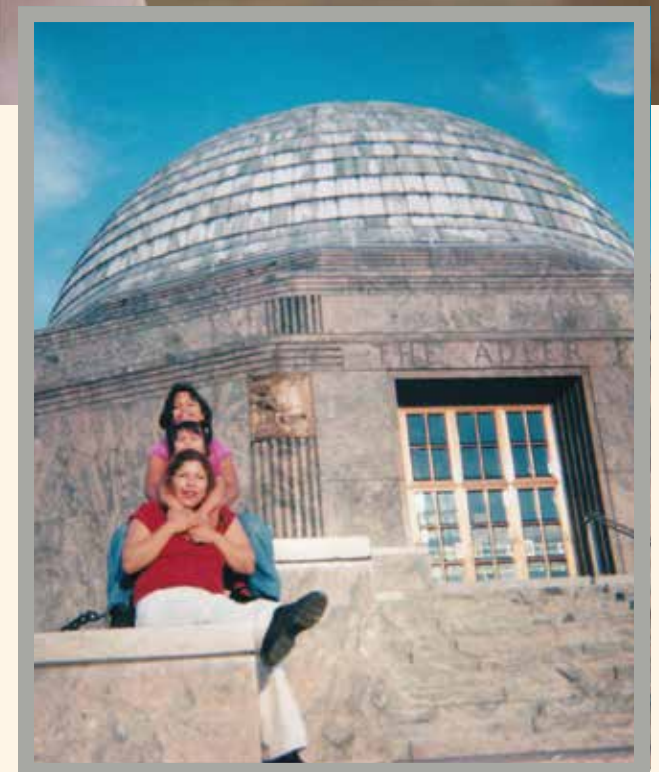
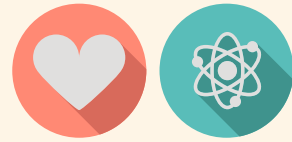


PHOTO BY: Hector Botello, Adileny's Father

PHOTO BY: Christine Donovan



LEFT. Christine Donovan enjoying the holidays with her daughter. "I'm such a better mom now," says Christine, crediting the help she received from Erie's Behavioral Health services.

BELOW. Christine Donovan speaks with her therapist, Erie's Clinical Director of Behavioral Health Jose Viruet, LCPC.



## BEHAVIORAL HEALTH

### **DURING A ROUTINE MEDICAL CHECK-UP, CHRISTINE DONOVAN TOLD HER ERIE PRIMARY CARE PROVIDER THAT SHE WAS STRUGGLING WITH ANXIETY.**

It's a feeling that so many relate to, particularly as the pandemic put an increased strain on everyone's mental health. Christine's provider introduced her to Jose Viruet, LCPC, an Erie therapist who has been working with her via telehealth. Recent expansions to Erie's behavioral health program mean Erie is now even better positioned to help patients of all ages. At every Erie health center, a medical provider can make a "warm hand-off"—immediately inviting a behavioral health provider into the exam room or telehealth visit when a patient expresses need for additional mental health support. Erie therapists have increased their in-person presence at Erie's school-based sites to better serve students. Three ongoing telehealth support groups launched for patients dealing with anxiety, grief and post-partum anxiety/depression. More than 300 behavioral health and other patient-facing employees have been trained in providing trauma-informed care to better recognize the role trauma may play in a patient's life, or even the vicarious trauma that impacts healthcare providers themselves. Erie's psychiatry team also significantly expanded in the past year, making services more accessible to adult and pediatric patients. Erie now offers sub-specialties like perinatal and geriatric psychiatry and Medication-Assisted Treatment (MAT) for opioid use disorders. And our psychiatrists have more opportunities to be involved in Erie's medical resident and advanced practice nursing education.

*"If it wasn't for Jose, I would not have the mental strength that I have to have made all of these changes, and just become a completely different person for the better."*

**CHRISTINE DONOVAN**  
Erie Patient

Hear Christine's story at [erie.health/christineandjose](https://erie.health/christineandjose)



## CARE FOR IMMIGRANT COMMUNITIES

### ONE OF ERIE'S VALUES IS SOCIAL JUSTICE: WE HONOR THE DIGNITY OF ALL PEOPLE AND THEIR RIGHT TO HIGH QUALITY CARE AND SAFE ENVIRONMENTS.

In early September 2022, Erie mobilized literally overnight to help staff the City of Chicago's pop-up welcome center by offering urgent medical care to asylum seekers bused from the Texas border. Erie's team triaged patients with a wide range of health needs after their long, arduous journeys and provided follow-up care to many in our health centers. Erie's response was rooted in our mission and mirrored the work we do every day to be a welcoming, compassionate source of care and support for families who are new to the United States. Erie serves our patients in the language they prefer, and 45% of Erie's patients speak a language other than English. In 2022, Erie provided high-quality medical, dental and behavioral healthcare in 92 different languages. We care for refugees and people seeking asylum from Afghanistan, Myanmar, Pakistan, Ukraine, and elsewhere. At the time of a medical exam, a provider can now make a warm hand-off to one of Erie's onsite Social Determinants of Health Care Coordinators who, aided by an interpreter, can help connect the patient to myriad resources they often need as they settle into their new community. Erie's culturally respectful approach helps our providers recognize when, for example, a patient could benefit from support from a behavioral health therapist trained in trauma-informed care, or when they should recommend a certain brand of Halal certified vitamins. In both times of extraordinary crisis, and on very ordinary days, Erie is motivated by the same belief that high-quality healthcare is a human right.

*"People Erie takes care of are all a part of our community. If nothing else, the pandemic has taught us that our health isn't our own—we're a community. And we need to strive to improve the health of everyone who lives in our communities."*

**NATALIE RAGHU, DNP, FNP-C, BC-ADM**  
Medical Director of Advanced Practice Providers

**45%**  
of Erie patients speak a language other than English



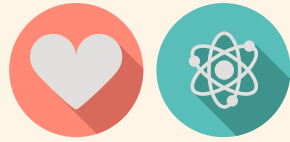
ABOVE. Erie OB/GYN Dr. Lyjia Strachan examines patient Arezo Naimee with the help of an Arabic interpreter on the phone.



RIGHT. In September 2022, Erie sent staff and equipment to the City of Chicago's pop-up Welcome Center to care for displaced asylum seekers arriving by bus from the Texas border.

PHOTO BY: Amy Valukas, Chief Population Health Officer





RIGHT. Social Determinants of Health (SDOH) Manager Lacey Johnson and SDOH Care Coordinator Emily Olson offer personal hygiene supplies to moms at *It Takes A Village*, a Community Baby Shower event that supported more than 100 expectant patient families on September 24, 2022.

BELOW. Patient Care Assistant Paula Pinzon monitors the blood pressure of patient Sheila Bahena during her prenatal appointment at Erie Evanston/Skokie Health Center.



PHOTO BY: Cathy Junia, Associate Director of Individual Giving and Events



## REPRODUCTIVE HEALTH

### ERIE RESPECTS OUR PATIENTS' REPRODUCTIVE HEALTH CHOICES, NO MATTER WHAT THEY ARE.

Our multidisciplinary reproductive health team includes OB/GYNs, family medicine doctors, advanced practice nurses, certified nurse midwives, health promoters and case managers. Regardless of their role on the care team, their priority is supporting patients and their children amidst all of the forces and factors affecting their ability to prioritize their own health and access quality healthcare. In 2022, more than 2,400 babies were delivered across all 13 Erie locations, more than any other community health center in Illinois and more than 99% of health centers nationally. Just as notable as the quantity of our deliveries is the quality of our care. Erie is among only 1% of health centers nationally—and the only one in Illinois—to receive the distinction “National Quality Leader in Maternal and Child Health” from the US Health Resources and Services Administration (HRSA). We provide pregnant patients with the highest quality medical care while also giving them tools and resources to ensure their babies have the healthiest start in life—from breastfeeding and nutrition support, to referrals for post-partum therapy, donations of infant supplies like diapers and safe sleep equipment, and the Reach Out and Read early literacy and language development program. And when it’s time for a patient to make very personal decisions about family planning, Erie partners with each of them to make the best, most informed, autonomous choices about their reproductive healthcare. Erie even offers patients same-day contraceptive access, so they can immediately receive the method of their choosing after consultation with their provider.



#### badge of honor

Erie is the only health center in Illinois to receive the distinction *National Quality Leader in Maternal and Child Health* from HRSA.

Erie provides  
the highest  
quality health  
care, doing  
it with heart.

Family Medicine Resident  
Dr. Eva Stoops helps young  
patient Daphne McSparron  
feel her heartbeat while she  
sits on her father Hector  
Reyes' lap.

# FINANCIAL HIGHLIGHTS

**Erie's community of supporters helps advance the unique combination of heart and science that makes Erie a welcoming, top quality healthcare home for patients across the lifespan.**

## Our growth

Generous partners have helped promote Erie's growth over the last five years, bringing our holistic, high quality, affordable healthcare to more people and communities.

REVENUES (At year end, dollars in millions)

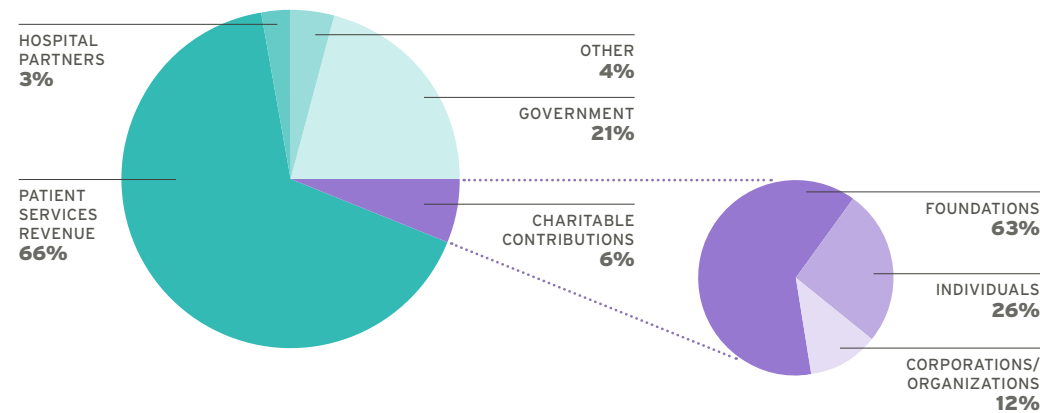


Revenue growth in FY21 and FY22 reflect a significant infusion of government grants and fees in response to the COVID-19 pandemic.

## Community of support

Your charitable contributions and multifaceted partnerships help ensure a diverse stream of funding for essential healthcare services and innovative programs for patients, regardless of insurance status, immigration status or ability to pay.

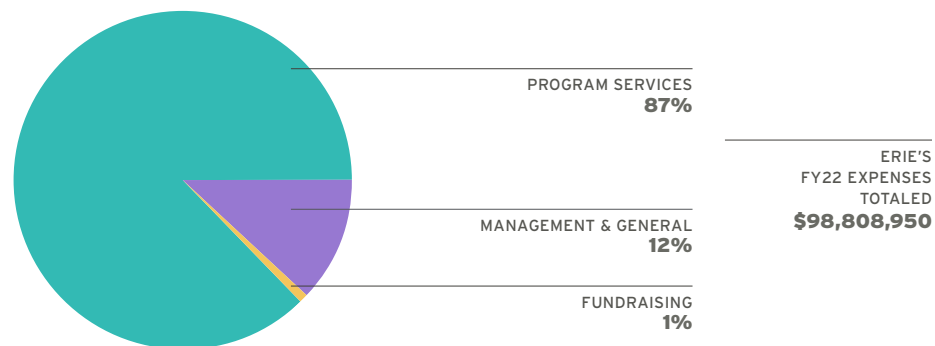
FY22 TOTAL REVENUE SOURCES



## Impact that matters

Throughout the challenges of the pandemic, your support has directly benefited Erie's patients with access to the comprehensive care and support they need, inside and outside the exam room.

FY22 FUNCTIONAL EXPENSES



For the audited Erie FY22 Financial Statements, click on the QR code or go to [erie.health/fy22financial](http://erie.health/fy22financial)

# DEAR PARTNERS AND FRIENDS,

At the heart of Erie Family Health Centers' (Erie's) impact and accomplishments is a community of people—patients, staff, supporters—bound by a shared belief that healthcare is a human right. As in previous years, your contributions helped drive the scientifically rooted achievements and innovations celebrated in the preceding pages.

In 2022, new and longtime funders and donors stepped up generously, creatively, and with so much care. Your generosity helped ensure ongoing, affordable medical, dental, and mental healthcare access to more than 85,000 Erie patients. And it also allowed our teams to respond rapidly in the face of a crisis, like providing urgent medical care to displaced asylum seekers in September.

We are grateful to supporters like you who understand the meaningful difference that access to compassionate and holistic healthcare makes for individuals, families and communities.

## EVERY DOLLAR RAISED BY ERIE FAMILY HEALTH FOUNDATION GOES DIRECTLY TO SUPPORTING ESSENTIAL PROGRAMS ACCORDING TO DONOR INTENT.

Erie patients and teams experienced the direct impact of your giving to our Social Determinants of Health team, resulting in expanded access to resources like durable medical equipment, transportation, healthy food, baby supplies, and other essentials. Your contributions allowed us to build and nurture connections beyond the health centers' walls through programs like the Erie Running Club and Reach Out and Read, and activities like *It Takes a Village*, a community baby shower for more than 100 Erie patient families.

We are grateful for your investment that promotes healthy and strong communities. Contributions to Erie's workforce development, for instance, not only allow us to train the diverse, skilled, and engaged team that is essential to Erie's mission, it also helps build a talent pipeline from the communities we serve.

After two years of virtual gatherings, we were thrilled to exchange warm greetings as we returned to in-person events hosted by Erie Family Health Foundation, the Erie Associate Board, and other leaders and volunteers. Thanks to our sponsors, donors, and the hundreds of attendees who gathered for Eriedescence in June and the Health Equity and Impact Awards and Gala in October.

On behalf of the Erie Family Health Foundation Board of Directors, thank you for your commitment to health equity and access to holistic, affordable care. Together, we will continue to advance the heart and science of healthcare.

Sincerely,



*Melissa Hilton*  
Melissa Hilton  
Executive Director  
Erie Family Health Foundation

*Nancy Bock*  
Nancy Bock  
Board Chair  
Erie Family Health Foundation

# THANK YOU TO OUR GENEROUS DONORS

● Staff during FY22 ▲ Governing Board ● Foundation Board ◆ Associate Board ■ Multi-year Grant ● Deceased

## OPERATING GIFTS

Annual Gifts from  
July 1, 2021-June 30, 2022

### Public Sources

Chicago Department of Public Health (CDPH)  
Chicago Public Schools  
Ela Township  
Federal Communications Commission (FCC)  
Illinois Department of Human Services (IDHS)  
Illinois Department of Public Health (IDPH)  
Lake County Community Development Division  
Libertyville Township  
Niles Township  
US Department of Health and Human Services, Health Resources and Services Administration (HRSA)  
Vernon Township  
Wauconda Township  
Waukegan Township

### Academic Partnerships

AllianceChicago  
Ann & Robert H. Lurie Children's Hospital of Chicago  
NorthShore University HealthSystem  
Northwestern University  
Rush University Medical Center  
University of Chicago Medical Center  
University of Illinois Chicago

### CORPORATIONS, FOUNDATIONS, ORGANIZATIONS AND INDIVIDUALS

Combined donations,  
for all purposes

### \$1,000,000 and above

NorthShore University HealthSystem  
Northwestern Medicine ■  
The Grainger Foundation ■

### \$500,000-\$999,999

The Crown Family ■  
John and Kathleen Schreiber Swedish Hospital (Part of NorthShore University HealthSystem)

### \$200,000-\$499,999

AIDS Foundation of Chicago (AFC)  
Illinois Children's Healthcare Foundation  
Living On The Go Foundation  
Local Initiatives Support Corporation (LISC)  
Polk Bros. Foundation ■  
West Side United

### \$100,000-\$199,999

Abbott Fund  
Ann & Robert H. Lurie Children's Hospital of Chicago  
Finnegan Family Foundation ■  
Gorter Family Foundation ■  
Healthcare Foundation of Northern Lake County  
Healthy Communities Foundation  
Hunter Family Foundation  
Tom Russell Charitable Foundation  
Tony Valukas and Cathy Beres ■

### \$50,000-\$99,999

Anonymous (2)  
AbbVie Foundation  
AllianceChicago-Illinois Contraceptive Access Now (ICAN)  
BlueCross and BlueShield of Illinois  
Joanne and Jeff Burgess JAB2 Fund  
Elizabeth Morse Genius Charitable Trust  
Illinois Primary Health Care Association (IPHCA)  
Mark and Maureen Miller Family Foundation  
Michael Reese Health Trust  
Sisyphus Supporting Foundation ■

### \$25,000-\$49,999

Anonymous  
Bowman C. Lingle Trust  
The Brinson Foundation  
The Coleman Foundation  
D&R Fund/Glasser Family  
Evanston Community Foundation  
Mary and Paul Finnegan  
Florence and Laurence Spungen Family Foundation ■  
Lee Francis ●● and Michelle Gittler  
Paul Francis

Lake County Community Foundation  
Lloyd A. Fry Foundation ■

The Northern Trust Foundation  
North Shore Gas Community Fund  
Prevent Cancer Foundation  
Siragusa Family Foundation ■  
United Way of Metropolitan Chicago  
Washington Square Health Foundation

### \$10,000-\$24,999

Anonymous  
Matt Aaronson ▲ and Kate Sanderson  
Aetna Better Health of Illinois

ALLSTAR Partners  
A. Montgomery Ward Foundation  
AAPD Foundation  
Arnold Family Foundation  
Stephen W. and Susan M. Baird Foundation  
William Cape  
Chicago Foundation for Women  
Cigna  
Colonel Stanley R. McNeil Foundation  
Linda Cushman ▲●  
Delta Dental of Illinois Foundation  
The Donley Foundation  
Evanston Cradle to Career Fifth Generation, Inc.  
First Presbyterian Church of Libertyville  
Francis Beidler Foundation  
The Frankel Family Foundation  
The Honorable Susan ● and Mr. Scott Garrett/Garrett Family Foundation  
Grant Healthcare Foundation  
Harry S. Black & Allon Fuller Fund  
Helen Brach Foundation  
Illinois Public Health Institute  
Rachel Kohler and Mark Hoplamazian  
LabCorp  
The Lehman-Stamm Family Fund  
David Leib and Anne Gendler  
North Shore Illinois Chapter of the Links, Inc.  
Sara Paretsky  
Gary Raju ● and Melissa Macek  
Eleanor and William Revelle  
Jill Simon Svoboda ▲ and John Svoboda  
Takeda Pharmaceuticals  
Lolli Zarlin

Anonymous  
Air Comfort Corporation  
Alera Group  
Ellen and Michael Alter  
Center for Food Allergy and Asthma Research  
Charles Barone and Susan Keiffer  
Amy ● and Mark Blumenthal  
Michael Cole ▲  
Adriana Diaz ●  
George M. Eisenberg Foundation for Charities  
Carol Gittler  
Laurence E. Herman Family Foundation  
Highland Park Presbyterian Church  
Melissa Hilton ● and Jonathan Perman  
Kellcie Fund  
Sheila and Christopher Kennedy  
Sara ● and Ted Naureckas  
Sherry Nordstrom ● and David Weindling  
Olivia Bea Ross Foundation  
Lisa Paccione and Melissa Robbins  
Lorraine and Norman Perman  
Rachel Ramaswamy ●  
Barbara Rother  
Michael Stateczny  
Darryl Tom ▲  
Holly Van Essen

### \$5,000-\$9,999

Aetna CVS Health  
Helen and Duane Binns  
Nancy Bock ▲● and Doug Fendon  
Gauri ◆ and Matt Brown  
Coalition of Limited English Speaking Elderly  
Patrick and Anna M. Cudahy Fund  
Lawrence and Charlotte Damron  
Valerie Egem  
Javier Flores  
Fresenius Kabi USA, LLC  
GE Healthcare  
Craig and Michal Golden  
Gould & Ratner  
Avery Hart and Nina Black

Amy Morrison Heinrich and Robert Heinrich  
Caroline Hoke ●  
Richard ● and Sandra Hutson  
Richard W & Mary Louise Hurckes Family Foundation  
Kenneth and Barbara Kaufman  
Pascale and Thomas Kichler  
William G. ▲ and Joan Kistner  
Lake County Community Foundation  
Leopardo Companies, Inc.  
Paul and Nancy Maddrell  
Brian P. ▲ and Michele Marsella  
Emily and Jess Martin  
Eric ▲ and Sarah Mayeda  
Nancy and Dave Napalo  
Polsinelli  
PNC  
Quest Diagnostics  
Dan Reinberg and Susie McMonagle  
Jeffrey Rubenstein  
Andrew Rubenstein  
Dr. Scholl Foundation  
Carl and Donna Stapleton  
The Trustmark Foundation  
Wintrust Wealth Management

### \$2,500-\$4,999

Anonymous  
Comcast Business  
Antonia J. Contro and George Marquisos  
Terry J. Conway and Judith A. Neafsey  
Judith Cothran ●  
Ann and Russ Covode  
Maureen M. Culhane  
Davies Family Foundation  
Mark Davis  
Dearborn Life Insurance Company  
Ann E. and Theodore C. ● Doege  
Lisa ▲ and Joel Dykstra  
Elizabeth Ester and Michael Brody  
Missy Fleming and Jack Block  
Brenda Fowler ●  
Kirkland & Ellis Foundation/  
Willard and Anne Fraumann  
GCS Charitable Fund  
Steven Geiermann  
James and Louise Glasser  
James and Tiffany Gruber  
Sarah B. Hahn ●  
Miranda Hart ● and Jacob Shapiro  
Edith Harte ● and Karl Matlin

Vot-ER  
Val and Rob Weiss  
Claudia Wyatt-Johnson and Rick Johnson/  
Partners in Performance  
Jenny Yu Zhang

### \$1,000-\$2,499

Advis, Inc  
Brian and Julie Alcalá  
American Academy of Family Physicians Foundation (AAFP)  
American Hospital Association  
Bonnie and Michael Balkin  
Ed Bancroft  
Betsy and Bill Banks  
Ann and Steve Bartram  
Belcore Electric  
Benco Dental  
Marjorie Benton  
Carly Berg ●  
Paul and Lisa Blumberg  
Calvine and Charles Bowen  
James and Corrinne Boyer  
David Bruce ●  
Joel Buchanan  
William and Kathy Chapman  
Posh and Michelle Charles  
Catherine Chen ●  
Chicago Dental Society Foundation  
Victoria Chiou  
Church of the Holy Spirit (Lake Forest)  
Deborah and Walter Clements  
Nancy Coletto  
Comcast Business  
Antonia J. Contro and George Marquisos  
Terry J. Conway and Judith A. Neafsey  
Judith Cothran ●  
Ann and Russ Covode  
Maureen M. Culhane  
Davies Family Foundation  
Mark Davis  
Dearborn Life Insurance Company  
Ann E. and Theodore C. ● Doege  
Lisa ▲ and Joel Dykstra  
Elizabeth Ester and Michael Brody  
Missy Fleming and Jack Block  
Brenda Fowler ●  
Kirkland & Ellis Foundation/  
Willard and Anne Fraumann  
GCS Charitable Fund  
Steven Geiermann  
James and Louise Glasser  
James and Tiffany Gruber  
Sarah B. Hahn ●  
Miranda Hart ● and Jacob Shapiro  
Edith Harte ● and Karl Matlin

Henderson Family Foundation  
Robert E. and Carol J. Hirschtick  
Humboldt Park Health  
Tim and Maureen Hunter Charitable Foundation  
Peter Jones and Marian Percy  
Cathy Junia ● and Andrew Cierny  
Catherine Kallal and Maurice Lemon  
Marie Kaufman  
Nicole Kaze ● and Andrew Lewis  
Suzanne and Jim Kenney  
Ian and Debbie Lesch  
Sally and Steve Ludeen  
Melissa Lupella  
Mary-Anne Meyer and Janet M. Larson  
Monterrey Security Consultants, Inc.  
Iliana Mora and Bodee Kittikamron  
Northern Trust  
Peters & Associates  
Feyce M. Peralta ●  
Nancy E. Pick and Lawrence R. Douglas  
Miriah Plawer-Volmerding ● and Matt Volmerding  
Power Bright Cleaning Services  
David Rahija  
Radha Reddy and Bruce Buerk  
Elizabeth and Daniel Reidy  
Ruth Richman  
Guy Rozentsveig and Vicky Shapiro  
Margaret Russell ●  
Consuelo and Luis Salazar  
Sentinel Technologies, Inc.  
Jeffrey ● and Mary Sherman  
Susan and Dwight Sippelle  
Valeria J. Stokes ●  
Lyjia Olayinka E.S. Strachan ●  
Daniel Stutzman  
Susan Swider and John Rogers  
Thomas Toser  
Vail Family Foundation/  
Margaret Vail  
Amy Valukas ● and Paul Brinkmann  
Robin Varnado ● and Dean Loizou  
Elliot Weisenberg and Clara Orban  
Bert and Barbara Weller  
Santina ● and Chris Wheat  
Vicki ● and John Whildin

### \$500-\$999

Anonymous (3)  
Timothy and Jessica Achtstatter

Rosalie Alicea ▲ and Robert Tutman  
All Saints' Episcopal Church/  
Ravenswood Run  
Virginia and John Andersen  
Diana Avarca ●  
David W. and Ann P. Baker  
John and Carol Balkcom  
Laura Banks ●  
Douglas Batesky and Maura Kennedy  
Tom Bauer  
Courtney Benson  
Janice Benson ●  
BMO Harris Bank  
Christopher Boisselle ●  
Melissa Bowie  
Caryn Brissman  
Lawrence and Ann Hartman Brown  
Valerie Browne  
Carol Ann and Jerry Burin  
Amy Armstrong and Robert Cape  
Alissa ● and Ryan Carlson  
Indie Carlson  
Susan Chakos  
Justin Chura  
Lewis M. Collens  
Elizabeth Cook ●  
MaryAnn and Charlie Czerepak  
Amanda Dauten ●  
Marisol De Jesus ●  
Sandra Del Toro ● and Gonzalo Rodriguez  
Susan Dennehy  
Carolyn Ann Dickens ▲  
Catherine Dimou  
Derek Dunn  
Don and Barbara Enns  
Andrew Ewbank ●  
Jean and Andy Fies  
Julie Francis and Howard Drossman  
Todd Frech  
Arthur J. Gallagher & Co.  
Sandra and Franklin Gelber  
Anne and Steve Gilford  
Kathleen Gillespie and Debra Shore  
Mita Goel  
Cornelia Grumman and James Warren  
Christine and Tyler Harshey  
Jill Heaton Gross and Charles Frank Gross  
Keith Hebeisen  
Jeff Herriman  
Douglas Hough  
Sarah K. Howie  
Tracy Irwin ●  
Christine Junia-Trias and Derick Trias  
Eileen and Gerard Kelly

Miriam Kelm  
Jeff and Beth Kopin  
Joan Kopinski  
Rachel Krause and Adam Helman  
Matthew Kunkel and Neal Lenhoff  
Rachel Lackland  
Lewis ● and Jill Landsberg  
Karen Lau  
Legat Architects  
Jon Lewis ◆  
Josie Llana ●  
Sara and Steven Loevy  
John Mancini and Lucinda Fox  
Kristin and Tony Mateja  
Jon Mayeda  
Annet Miranda ●  
David Moreno  
Jack Murchie and Carol Becker  
Jeannie Nethery  
NP NOW LLC  
Kim A. Nugent  
Matt O'Brien  
Thomas and Mary Ann Oczkowski  
Kelly and Timothy O'Day  
Denise Oleske  
Rebekah Osgood  
John and Katie Palmer  
Robert and Nancy Paul  
Anne Pease  
Livier Pelayo ●  
Elizabeth and James Peterson  
Daniel Pinkert and Laura Schwab ●  
Sarah Quirk ●  
Chuck Randall  
Vera Rigolin and Keith Dunn  
Carla Rubalcava ◆ and Juan J. Gonzalez  
Karen Salmon and Eric Garton  
Joanne Sarroza ●  
Gordon Schiff and Mardge Cohen  
Amy Schroeder ●  
April and Jon Schweitzer  
David R. Schultz ●  
Jerome Shilling  
Ana R. Sigda ●  
Debra Sikanas  
Stephen and Janet Smith  
Glen M. Spear and Myra Wagner  
Eric and Christine Strobel  
Caryn Summer and Bradley Reiff  
Aparna Sundaram  
Mayumi ● and Chris Swanson  
Matt and Jeanne Turner  
Gintaras Vaisnys and Gloria Kot  
Janice C. Valukas

Daniel Wachter and Annie Grossman  
Jaclyn● and Tom Walsh  
Carol Waugh  
Lauren Weber  
Sara Welker  
Forrest Whittaker  
Steph Willding  
Mark and Margie Zivin

**\$250-\$499**

Anonymous (4)  
Samuel and Catherine Ach  
James N. Alexander  
André Andrade  
Alona Anspach  
Maria D. Ascencio●  
Robert Bacci  
Katie and A. Wynn Bailey  
Tiosha Bailey  
Kate and David Balsley  
Susana Barona●  
Christopher Benavente●  
Lisa and Jeff Black  
Christine A. Bock  
Amy Bolton  
Elizabeth Bryan  
David Buchanan and Lacinda Hummel  
Lisa Buckley  
Andrew● and Susanna Bunta  
Margaret Burke  
John Byrne  
Edie Canter and Fred Wellisch  
Thomas Carter  
Erin B. Cavanaugh●  
Ernest▲ and Sarah Chang  
Kay Christ and Don Tomei  
Fay Clayton and Lowell Sachnoff  
Lisa Coburn  
Elaine Coldren●  
Michelle Collins  
Rebeca Covarrubias●  
Lisette Craft●  
Jennifer Cruz●  
Krishna Das●  
Aldrin Deloria●  
Daniel Derman and Shoshana Korrub  
Mara Divis●  
James and Sara Downey  
Megan Doyle●  
Kristin Estandarte  
Stephanie V. Feijoo●  
Elizabeth Feldman● and Jay Shefsky  
Janet Ferguson●  
Allen Finkelstein  
Christine Frech  
Judy and Jerrold Frumm  
Raymundo Galeno Navarro  
Stephanie L. Gallo●  
George Gardiakos●

Trish and Charles Georgas  
John and Shari Glynn  
Martha Glynn●  
Allen I. Goldberg  
Andrea and Jeff Gosz  
Nina Graf  
Charles Graves  
Melissa Graves  
Kendall Griffith  
Gena M. Grospe●  
Allen Gustafson  
Linda Hall  
Maureen Hellwig  
Robert and Janet Helman  
Robert Holland  
Linda and Doug Honnold  
Eugene Hotchkiss III  
Kierra A. Jackson●  
Susan Jaffee  
Daisy Jaime Guzman●  
Altamush Jindani●  
Natalie Jinete●  
Lacey Johnson●◆  
Matt Juszcak  
Sharon and Tom Kazee  
Robert Keim  
Mary King  
Patricia H. Kleeman  
Melanie Knuppel  
James Kroeger  
Janice Kupiec  
Steven Kymes  
Carmen Lago  
Barth Landor●  
Caitlin and Donald Lassus●  
Karen and Robert Lewis  
Paul Ligon  
Julie Lockwood  
Linda Loving and Richard Aaronson  
Denise Macey  
Kate Maehr and Sam Pickering  
Mary and Tim Marnell  
Allee E. McDaniel●  
Carine and Robert McGreevey  
Michael McHugh  
Jacqueline McSparron●  
Betsey and Scott Wills  
Kellie● and Marlon Medious  
Daniel Mendoza●  
Lois H. Meyer  
David and Janet Midgley  
Menya Miles●  
Barry Moltz  
Mara Motley●  
Carol Mullins  
Laura and Bob Murphy  
Richard and Jill Murphy  
Rose Navarro and Ronald Leahy  
Diamond Neita●  
Geoyia Nightengale●

Charlotte M. Niznik  
Corey Noland  
Anne and John O'Connor  
Emily Olson●  
Jung Panambo-Kantoff and Howie Kantoff  
Manas Parikh●  
Carolyn Payne●  
Daniel Peluse  
Angelica Perez●  
Jesse and Elizabeth Peterson  
Hall  
Maria D. Pirotte●  
Dan and Alison  
Christy Prah  
Herbert Prochnow  
Nicole● and Michael Quien  
Nagaraja and Usha Raghu  
Natalie Raghu●  
Steve and Lucille Ramsey  
Jean Reidy●  
Olga and Roger Reupert  
Patricia Richter  
John and Audrey Rosenheim  
Piper and Jono Rothschild  
Hannah Rowell●  
Emily Rubenstein and Angel Rivera  
Richard C. Rutschman  
Jeffrey Schaidler  
David and Judith Schiffman  
Tina Schuh  
Janet Silverberg  
Linda G. Silverstein  
Edwin Simon  
Sandra Small●  
William Smith  
Debbie Sontag●  
Sherri Spear  
Scott J. Spencer●  
Zachary Spreitzer●  
Ingrid and Bill Stafford  
Deborah Stefani  
Peter Stille  
Lori and Kevin Suddick  
Kathy Tisdahl and Patrick Hughes  
Patrick Tosetti  
Sara Tranchina●  
Steven Urban and Maria Choca  
Beth Valukas and Peter Barash  
Gail Warner  
Katie Waymack  
Karelle A. Webb●  
Catherine W. and Robert C. Wegrzyn  
Adrienne White-Faines  
Stephanie Whyte  
Rebecca Wiedmeyer  
Kimberly Williams●  
Danielle J. Williams●  
Derek Wolken●  
Anna Jean Woroch  
Clyde W. Yancy

Eanas Yassa  
Bridget Zahares  
Julia Zupko  
**\$100-\$249**  
Anonymous (3)  
Michele and Sheldon Abrams  
AFSCME Retirees Chapter 66  
Alma Aguila●  
Jazmine Aguila●  
Lauren Ahern  
Syed Mustafa Alavi●  
Lucy M. Amaro●  
Michelle Anderson●  
Gena and Jeff Andreason  
Marco Aquino  
Beth and Jim Ashley  
Allison Axtell  
Scott Bakal and Beth Solomon  
Jeff Banks  
Michael Barin  
Katrina Barone●  
Grizel Barrera●  
Ronald and Queta Bauer  
John Bausch  
Amir Behdad  
Kathleen Behner  
Angelica Bello●  
Elizabeth Bennetts● and Ron Chitekwe  
Betzy Berganza▲  
Kate● and Jack Birdwell  
Janet Blachman  
Karen Blair  
Ann S. Blouin  
John and Cindy Blumberg  
Michael Boyd▲  
Peter C. Brennan  
Sylvie Brick●  
Perla Brito●  
Mary Brown  
William Burley  
Arlene Bury-Fiol●  
Brenda and Walter Bushala  
Michelle Byrne●  
Derrick Cabrera●  
Amy Cai  
Rebecca Calendo●  
Nancy Callaway  
Nicole C. Camardo●  
Kenzie A. Cameron  
Steve Barlock and Jill Capobianco  
Alexie L. Caraballo●  
Alissa and Ryan Carlson  
Kim Carlson  
Terence Carmichael  
Paul Casamassimo  
Philip and Meg Cavanaugh  
Christina Cedeno●  
Diane Cesarone  
Bryan Cheek  
Catherine Cheng  
Karen Christiansen

Michaela Ciulla●◆  
Lynne M. Clapman●  
Robert and Carolyn Clarick  
Richard R. and Melanie H. Clark  
Ronald Cohen and Helen Kim  
Rebecca A. Commito●  
Kevin Conlon  
Nancy Coolley  
Melissa Costello  
William and Kamala Cotts  
Maureen and Thomas Cox  
Marianna Crane  
Niels W. Dale●  
Shira Danan  
Elizabeth R. Danan  
Geri and James Davis  
Patricia De Biasi Cooper and Edward Cooper  
Antonina De Torres Ignacio  
Mary DeBartolo  
Ariel and Steven Derringer  
Richard and Sarah DeYoung  
Ethan Domsten  
Susan B. Doroshov  
Meredith and Phil Dray  
Kathy and Neil Driscoll  
Anne Durkin  
Jane and Tim Eaton  
Laura Eder  
Michael Elliott  
Howard Elson  
Katherine Erbe  
Ashley B. Estrada●  
Juan Estupinan  
Rovee A. Fabi●  
Karen Feijoo  
Ellen and Joel Feldman  
Joe Felger●  
Lauren Fifarek●  
Neil Fisher  
Barbara Fishman  
Sheila Fleming  
George Fogel  
Mary Kay Foley●  
Lisa Fowler  
Roark Frankel and Gillian Goern  
Earl Frederick  
Michael and Deena Friedman  
Jane Friedman  
Mike Frumm  
Deborah Fuchs  
Janet Gans Epner and Paul Epner  
Joselyn Garcia●  
Jill R. Gardner  
Shannon Giblin  
Debra Gittler  
Betty and Bruce Gladfelter  
Corey Glenn●  
Roberta Glick  
Christine A. Gnutek  
Celeste Goering●◆

Mary Goetz  
Claire Goulding  
Mai Lynn Grajewski●  
Jennifer Green  
William and Mary Greene  
David D. Gries  
Kate Grossman  
Katherine Guay  
Ada Mary Gugenheim  
Karyn Gutierrez  
Adriana Guzman●  
Susana Guzman●  
Mira Hager●  
Ryan Hajen  
Gabriela Hallas●  
Paul A. Hallas  
Pat N. Harada  
Ari Hart and Becca Linden  
Janis Hartman  
Nevin and Marialice Harwood  
Karen Haverkamp●  
David Hayes  
Rachel Hayman  
Jason and Laura Helveston  
Kristie Henry  
Lauren Henry●  
Janeen Hernan  
Janet A. and Stuart P. Hersh  
Debbie Hew●  
Nancy Hijjawi  
Jennifer Hill●◆  
Alison S. Hilton  
Arielle Hirschfeld●  
James Hock●  
Kristen Hohl  
Jean G. and Lon W. Homeier  
Michael D. Horton and Lesa M. Vidovic  
Margaret C. Howard  
David Hunt  
Samantha Hunter●  
Byron Hutson  
Barbara Jane Irwin  
Mary Ivascu  
Tiphany Dee Jackson●  
Janine Jackson  
Jennifer Jaffe  
Raymond James Charitable  
Sheila and Kenneth Javor  
Larisa● and Paul Jesinskis  
Hilary Jesudoss  
Wesley and Sandra Johnson  
Averille D. Jones●  
Lynn Joy  
Jody Junia  
Jamie Kaplan  
Pamela Kaplan  
Alisa Karmi  
Robert Kastenholz  
Lisa Kearney● and Richard Bolliger  
Hannah E. Keel●  
Dana Kelly

Bob and Judy Kemp  
Charles L. Killman  
Kathryn Kinsella  
Bryce Kita  
Devin Kitashiro  
Kelly Klingensmith●  
Mary Knight  
Elaine and Ronald Kobold  
Danka Kormosova  
Kenneth I. Kornbluh  
Ronda and Gary Korzon-Kromelow  
Gary and Erica Krugel  
Anne Ladky and Karen Fishman  
Gail Lagman  
Sarah Lambeth●  
Ms. Merle Lambeth  
Rebecca Lapat●  
Scottie Larson  
Kathleen Laslo●  
Lansdale Lau  
Winifred and Walter Lau  
Matthew Laubenstein  
Hyo Lee●  
Thomas S. Lee  
Troy Leight  
Todd and Lisa Lesser  
Peter and Aviva Levavi  
Megan Levonyak  
Nicole Levonyak  
James Lifton  
Jerry and Fay Ligon  
Lana L. Lindgren●  
Clifford Lisman  
Jose Lopez  
Jacqueline D. Lovelace●  
Paul Luning  
Margaret and Paul Lurie  
Mary Lusk  
Barry Lutz  
Jay Lynch  
Amanda Lyon  
Tracy Lyons●  
Jacqueline S. Ma●  
Erin Mandel  
Claudia Marinescu●  
Carolyn Marsolai  
Andrew Mcaleese  
Scott A. McDonald  
Jeanine McGrath  
Betsy● and Mark McKelvey  
Lisa B. McKenna●  
Ramil Mendoza and Todd Cummings  
Ana Mercado●  
David Meyers and Roberta Strickler  
Ed Michael and Rachel Hayman  
Deborah Midgley● and Brian Gladstein  
The League of Women Voters of Evanston

Mark Miller  
Lory Mishra●◆  
Alexandra Morreale  
Y. S. and Suguna Murthy  
Liliana Navarrete●  
Carol and Pat Navin  
Anna Nguyen●  
Megan Noakes  
Alice Setrini▲ and Chris Norborg  
Cheyla Noriega●  
Susan and Mark Nystuen  
Tiffany Okoniewski●  
Gregory and Susan Olson  
Vanessa Ortega●  
Joseph Palombo  
Robert Paral  
Prashant Parikh  
Rosio Patino●  
Donna E. and Randall R. Patterson  
Paul and Amy Pedersen  
Cindy Perez●  
Cynthia Petrie  
Linda Pfeffer  
Brigitte Pintz●  
Barbara Pratt  
Shruti Raghu  
Priya Rajan  
Laurene Raleigh  
Carol Ramaswamy  
Karen Randolph  
Lynn and Phil Rauch  
Gwenn Rausch  
Bradley T. Ray  
Ravali Reddy  
Patricia and Robert Reece  
Iqbal Rehman and Razia Memon  
Amy and Doug Reilly  
Ruth Reiner  
Anne Reusche and David Marzahl  
Marcia and John Rea  
Giannina Riccardi  
Tehemina Richardson  
AnnMarie Ries  
Osmany I. Rivas●  
Vanessa Rivas-Lopez●  
Marybeth Robb  
Margaret Romm  
Abigail and Michael Roos  
Esther R. Rosenbloom  
Catherine Ross  
Susan and David Rossi  
Angkana Roy●  
Alejandra Rubalcava  
Oliver Ruff  
Paula Rusca●  
Deborah Russell  
Ana Saavedra●  
Cheryl and Lee Sachnoff  
Lois Sachs

|                            |                           |                                |                            |   |                               |                              |                           |
|----------------------------|---------------------------|--------------------------------|----------------------------|---|-------------------------------|------------------------------|---------------------------|
| Marisol Samano●            | Margaret Wojcik           | Meredith Berlin●               | Sharon Clough              | Steve Fishman                               | Jim Hensel                    | Gia C. Kunkel                | Anita B. McCarthy●        |
| Jane Sanjinez              | Harriet Wolf              | Maria De La Luz Bernabe Munoz● | Ari Clouse                 | Julia Fishman                               | Maria G. Heredia●             | Mike Kunkel                  | Mary Mccoullough          |
| Lisa M. Sawczuk            | Elizabeth and Robert Wood | Meg Bernard                    | Angela Coderre             | Sarah Fitz●                                 | Richard Herman                | Sheila Kunkel                | Anne Mcdonagh●            |
| Anna and Jeffrey Schaider  | Patricia C. Wood          | Emily Bettencourt●             | Hedy Cohen                 | Amy Fitzjarrald                             | Stephanie Hernandez●          | Suzanne Kunkel●              | Julie McDonnell           |
| Margie Schaps              | Paula Worthington         | Melissa Bert                   | Charles Cohen              | Robin F. Fletcher●                          | Patricia Hernandez            | Jackie Kutrovacz             | Lisa McGowan              |
| Elizabeth R. Schenkier     | Kenneth Wright            | Alejandra Biancucci            | Allie Colaco               | Raquel Flores●                              | Clemente Hernandez●           | Margaret Ladner●             | Kathleen A McGuire●       |
| Amy Schuman                | Colleen Wyse              | Christan Biggers●              | Michelle G. Coleman●       | Maria G. Flores●                            | Roxana Hernandez●             | Jennifer Lainson             | John P. Mckenna           |
| Paul Shadle                | Nicole Yanez-Zamora●      | Nicole Binkowski               | Laura Concannon            | Rienna L. Flowers●                          | Emmanuel Hernandez●           | Lewis Lampiris               | Joseph Mckenna            |
| Jayanti Shah               | Jessica Young●            | Nina Binkowski                 | Teresita Consunji          | Alysha Fluno                                | Maritza Herrera               | Martha and George Lannert    | Stephen J. and Lisa B.●   |
| Anita and Gautam Shah      | Nancy Zamora              | Yalem Bitewlegn                | J. Wesley Cook             | Andrea Fragoso●                             | Joel and Maria Herrera        | Derek and Kate Larsen        | McKenna                   |
| Jane Shapiro               | <b>Up to \$99</b>         | Rabbi Joseph Black             | Evelyn Cortes●             | Sylvia Franke                               | Katie Hew                     | Eric Larson                  | David Mckeon              |
| Michele Shubitowski●       | Anonymous (8)             | Sue Black                      | Erin Craft-Otterbacher     | Carla and Mark Frisch                       | Mei Hew                       | Anahy Lazaro●                | Mary McNamara●            |
| Diane and David Sigman     | Rachel Abramson           | Marquita Blackwell             | Barbara Creed              | Stacey Frumm                                | Tamara Hibbard                | Medora Lee                   | Virginia McTier           |
| Kevin Smith                | Cecilia Ackmann           | Steve Blye                     | Alejandro Cruz●            | Evelyn M. Fuentes●                          | Natalie S. Hiebert●           | Young J. Lee                 | Dwight McTizic◆           |
| Kristen Soehngen           | Stephanie Acosta●         | Taylor Boelkes                 | Chloe Dale                 | Mikhail A. Furman● and Yevgeniya R. Barmash | Andrea Hirschfeld             | James Lenert●                | Kyle Mellinger            |
| Amy Solas                  | Mark Adams                | Mary M. Bogasky●               | Marcia M. Dalton●          | Amy Gabel                                   | Jenny Ho                      | Tanya L. Lenkaitis           | Judy Mendez▲              |
| Kiersten Solis●            | Desiree Adaway            | Ashley Bolin                   | Patricia M. Dasilva●       | Robyn Gabel                                 | Jessica Hoang                 | Michael Lennon               | Janett Mendiola●          |
| Barbara Solit              | Leslee and Danilo Adriano | Cristina Bondoc                | Samuel Daviera●            | Denise Galaviz●                             | Renee and Bruce Hochberg      | Jessica Leone                | Abigail Merkel            |
| Mary Beth Sommer           | Rubi Aguilar●             | Greg Bork                      | Kevin Davis●               | Guadalupe Gallardo                          | Melanie Hoffman               | Rodion Leshinsky             | Shannon● and Paul Metzger |
| Kelley Staley●             | Mary Aguilar●             | Aviva Bowen                    | Kevanya J. Davis●          | Alma Gamez●                                 | Linda Hogan and John Morrison | Chuck Lesnick                | Emily Meyers              |
| Helen M. Stancik●          | Sherie O. Ajayi●          | Micaela Bowers●                | Rosa M. De Leon●           | Patricia Gammon                             | Margy Levinson                | Margy Levinson               | Amy and Josh Michael      |
| Scott Stebbins             | Nizamuddin Alavi          | Caitlin Bree                   | Celesta DeAstis            | Esperanza Garcia                            | Ashley C. Levitan●            | Ashley C. Levitan●           | Kimberly and Tim Miller   |
| David Stolberg             | Munsarim Alavi            | Tony Breitbart                 | Muhammad Deen●             | Esther J. Garcia●                           | Jennifer G. Lewallen          | Jennifer G. Lewallen         | Ahresha Minter-Bey●       |
| Vanessa Stubbs             | Alex Alcozer              | Stephanie Brinkerhoff          | Paula del Cerro            | Paula Garcia                                | Marcia Lewin-Berlin           | Marcia Lewin-Berlin          | Mayra Miranda             |
| Kierra Stuvland●           | Maria Esther Almanza●     | Cheyenne M. Brinson            | Tina L. Delgado●           | Sarah Garcia                                | Alison Lewis                  | Alison Lewis                 | Irene Mitchell            |
| Robert R. Tanz             | Madeline Alvarado●        | Cate Brodner                   | Yaretzi Delgado●           | Kelly Garrett                               | Daniel Lewis                  | Daniel Lewis                 | Nivedita Mohanty●         |
| Diane Tate                 | Jose and Mary Alvarado    | Laura Brodsky                  | Janett Delgado●            | Glenda Genio                                | Marilyn Leyva                 | Marilyn Leyva                | Lupita Monroy●            |
| Jennifer Tello●            | Pricilla Alvarado●        | Susan and Tom Brooks           | Beth DeMars                | Mark and Katherine Gibson                   | Edgar Leyva                   | Edgar Leyva                  | Jeannette Montoya         |
| Mayra Terrones●            | Karina Alvarez Espinoza●  | Anne Brown                     | Michelle Dempster          | Judith E. Gill                              | Susana Leyva                  | Susana Leyva                 | Chantill M. Moody         |
| Tara A. Tillman●           | Itzel Alvarez Leon●       | Barbara Brown                  | Lauren Desmond             | Mandy L. Gittler●                           | Jenny Liem Nordin●            | Jenny Liem Nordin●           | Margaret Moore            |
| Chevonne Toney●            | Peter Anderson            | Christina E. Brown             | Catherine Dezynski         | Yasmine Goelzer● and Daniel Alter           | Dhanya Limaye●                | Dhanya Limaye●               | Grace Moore               |
| Top Box Foods              | Cathy Antunez●            | Gwennetta Bulter               | Kerry Di Pasquale          | Carolyn Goering                             | Erica Lippitz                 | Erica Lippitz                | Stephanie Mora●           |
| Esperanza Torres●          | Karen Appleby             | Jayne Bumgarner                | Elaine Diamond             | Claire and Mark Golan                       | Pauline and Brent Little      | Pauline and Brent Little     | Eyhary Morales●           |
| Juana Torres●              | Laura April               | Steve Harp and Nancy Burke     | Vanessa Diaz●              | Angel Gonzalez                              | Frank Lizzadro                | Frank Lizzadro               | Matt Moran                |
| Hannah Trezise●            | Milka Aratlakova          | Cameron Burnette●              | Luz Diaz●                  | Jasmine Gonzalez●                           | Joan Long                     | Joan Long                    | Julie Morath              |
| Robert D. Trezise          | Phoebe Arbogast           | Deborah S. Burton              | Humberto Diaz              | Marixsa Gorgas●                             | Vanessa Lopez●                | Vanessa Lopez●               | Suzanne Morden            |
| Steve Trubac               | Cathy Arista●             | Idessa D. Butler●              | Lina Y. Diaz●              | Melissa M. Goslawski●                       | Stuart Lubin and Mollie Reed  | Stuart Lubin and Mollie Reed | Lawrence Moss             |
| Beth Truett Haagen         | Adolfo Ariza              | Floria Butler                  | Silvia Diaz-Ponce●         | Judith and Philip Graff                     | Eliza Lucio●                  | Eliza Lucio●                 | Susan Moss                |
| Margaret Trufant           | Marisol Arreola           | Shana Butler                   | Guistrian Dior             | Lark M. Gray                                | Kayleigh Lundh                | Kayleigh Lundh               | Ashley Moy Wooten         |
| Yesika Trujillo Facio●     | Marissa Arrez             | Brianna R. Byrd●               | David Doerr                | Anna Graziano                               | Princess Mikha Lundrigan      | Princess Mikha Lundrigan     | Esther Murillo●           |
| Joel Tune                  | Maritza Arroyo●           | Thomas Campbell                | Meztli Doles●              | Frances and David Griffin                   | Nancy Lyons                   | Nancy Lyons                  | Kimario Murray●           |
| Patti Tuomey               | Angie Avila               | Cynthia Campos●                | Diana Dominguez Flores●    | Eston and Sandy Gross                       | Eileen Macdonald              | Eileen Macdonald             | Tom E. Murray             |
| Toshiko Uchida             | Maribel Avila●            | Alexandra Caneris              | Alyssa Dones●              | Jacqueline Guadarrama●                      | Emily MacDonald●              | Emily MacDonald●             | Fahlyn Myrie              |
| Matthew Urkoski            | Edgar Aviles●             | Belen Cano●                    | Amber M. Dotson●           | Amy Gudgeon                                 | Andrea Mackey●                | Andrea Mackey●               | Hansika Narayanan         |
| Aurea Urquiza●             | Alex Baciu                | Cassidy F. Carlson             | Ms. Paula Douglass         | Maria Guerrero                              | Ebony Mackey●                 | Ebony Mackey●                | Sandi Nathan              |
| Eduardo Valentin-Perez●    | Ana Baez                  | Karyl Carlson and Carlson Jeff | Alma Drabkin               | Christian Guerrero                          | Bridget● and Patrick Magner   | Bridget● and Patrick Magner  | James Naureckas           |
| Shaunda Van Hook           | Erica Bahena●             | Jaynette Carrion●              | Kathryn E. Dreitzler       | Rocio Guillen●                              | Mercedes Main-Duplechin       | Mercedes Main-Duplechin      | Rebecca Nelson●           |
| Arvydas D. Vanagunas       | Stacy Bailey              | Roshanda Carter●               | Lauren Drowley             | Ruchi Gupta                                 | Barbara Makovec               | Barbara Makovec              | Alejandra Ng-Feng         |
| Mary Lynn Vaughan          | Kathy Bailon              | Sarah Cassidy                  | Carol Ducommun             | Ellen Gussin                                | Paul Makovec                  | Paul Makovec                 | Maria D. Nickerson●       |
| Barb Vicory                | Hannah Ballard            | Mercedes Castillo●             | Shira Dunn● and Tyler Dunn | Carmen Gutierrez                            | Jacqueline Malee              | Jacqueline Malee             | Cristina Nieves●          |
| Kathy and Michael Violtt   | Lourdez Barajas           | Celeste Castillo▲              | Jennifer Duran             | Kerry Hagy                                  | Stephanie Marin●              | Stephanie Marin●             | Priscilla Nieves●         |
| Heidi J. Voorhees          | Jeanne M. Barlett         | Yesenia Ceja●                  | Robin Duray                | Ann Hajicek                                 | Nicole Markovich●             | Nicole Markovich●            | Hokuto Nishioka           |
| Paul Waytz                 | Audwin Barnes             | Amanda Cespedes                | Carol Edelson              | Alberto Hanan                               | Marilyn Martinez              | Marilyn Martinez             | Laura L. Nozicka●         |
| Claire West●               | Sherry Barren●            | Veronica Chaidez               | Maribeth T. Edwards●       | Nicole Hand                                 | Michael Martinez              | Michael Martinez             | Jennifer Nguyen●          |
| Jennifer Whitehead         | Sweet Barren●             | Esseida U. Chavez●             | David Escontrias           | Ivan A. Handler                             | Celia Martinez●               | Celia Martinez●              | Nayeli Ocampo●            |
| Sidney Whitman             | Jacquelyn Batty           | Monica G. Chavez               | Ali Exner                  | Lilah R. Handler●                           | Erika L. Martinez             | Erika L. Martinez            | Jennifer Ocampo-Martinez  |
| Clark and Megan Wildenradt | Christine Baumbach        | Hannah Chi●                    | Zaid Farahid               | Patricia Hannon●                            | Linda Martinez                | Linda Martinez               | Aidyn Ocon                |
| Dawn M. Williams           | Elizabeth Bautista        | Gina Ciaccia                   | Laura Farchone             | Elizabeth Hart                              | Gabriela Martinez●            | Gabriela Martinez●           | Lisa M. Oldham●           |
| Leslie and Kevin Williams  | Ralph Bayoneto            | Molly Cioni                    | Trish Farrell              | Brittany R. Hay●                            | Joanne L. Marwil              | Joanne L. Marwil             | Mayra Olivares●           |
| Lorena A. Williams●        | Ewa Bednarczyk●           | Allison Clark Young●           | Benjamin Feijoo            | Carissa Heine                               | Sonia Massey●                 | Sonia Massey●                | Christina N. Oliveros●    |
| Timothy J. Williamson      | Anita Bednarz             | Marina Claudio                 | Paul Feldman               | Jessica Hellriegel●                         | Maria Matias-Areizaga●        | Maria Matias-Areizaga●       | Michael J. Olson          |
| Elizabeth Wilson           | Janet Bennick             |                                | Jose Fernandez             |   | Casley Matthews               | Casley Matthews              | Liz O'Mahoney             |
| Heather Winn               |                           |                                | Jazmin Figueroa●           |   | Schell McCall                 | Schell McCall                | Constance C. Oneal●       |

Richard Oravec  
 Ryan O'Reilly  
 Peter and Myra Orlinsky  
 Doralis Coriano Ortiz  
 Mary Kate Osborne●  
 Audrey Ostrowski  
 Cheryl Otoole  
 Carina Palfenier  
 Ami D. Pandya●  
 Shivam Parikh  
 Sherry L. Parker-Lewis  
 Cathy Parr  
 Stanley Parzen  
 Mehmed Pasalic●  
 Katie Pascoe  
 Greg Pasieka  
 Meera Patel  
 Purva Patel  
 Umeah Patel  
 Ina Patel  
 Sandra and Nick Paterakos  
 Rosalba Pelaez-Bustamante●  
 Daniel Pelayo  
 Luis Pelayo  
 Jose Pelayo  
 Leticia Pelayo  
 Abigail Peralta  
 Ignacio Perez●  
 Irma Perez●  
 Karen Perez●  
 Nancy Perez●  
 Carrie Perman  
 Robin Perrtree and Francis Unger  
 Rachel Perry  
 Alissa Peterson  
 Julie Pfeffer◆  
 Karen Pflaumer  
 Rita Philip●  
 Kevin Phung  
 Patrick Pickarts●  
 Rachel Pike-Norton  
 Megan Piotrowski  
 Panna Pithadia  
 Melanie Pivarski  
 Thomas Plum  
 Janet Poleski  
 Katherine Pomaranski  
 Kelly Pompea  
 Josie Porcelli  
 Peter Power  
 Jean Powers  
 Patryk Prasad  
 Aaron Priskorn  
 Christopher Proscia  
 Sam Provenzano  
 Patricia Pruitt  
 Kelly A. Quaine●  
 Abigail Quay●  
 Jimmy A. Quijada  
 Maira Eliza Quizhpi●  
 Vanessa Ramirez●  
 Maria L. Ramirez●

Esmeralda Ramirez●  
 Martha Ramirez●  
 Rafael Rauda●  
 Meghan M. Rausch  
 Barbara Ray  
 Paul Reardon  
 Maureen Reardon  
 Paula Reeves  
 Suzanne Reicher  
 Jeanne Reilly  
 Steve Reinhart  
 Richard S. Reizen  
 Cheryl and James Render  
 Lilliana Rendon  
 Louis Ressler  
 Adriana Restrepo●  
 Guadalupe I. Reyes●  
 Denise Rice  
 Jeff Richardson  
 April Richardson  
 Nicki Rimkus  
 Irmario Rios●  
 Ana Roberts  
 Jose A. Rocha  
 Jovani Rodriguez  
 Robin Rogers  
 Megan Rogers Zaccaro◆ and Mino Zaccaro  
 Mickey Rolfe  
 Adriana Roman●  
 Grizel Roman●  
 Richard J. Romanowski▲  
 Marta Romeo-Waliszewska  
 Rene Rosa  
 Cristina Rosa●  
 Stephanie Rose  
 Rhoda Rosen  
 Chava Rosenbaum●  
 Yulanda Ross●  
 Rhonda and Dennis Roth  
 Iris Rudnick  
 Diana Ruiz●  
 Guillermo Ruiz●  
 Janae Russell●  
 Derek Ryan●  
 Nour El-Houda Sahraoui●  
 Genevieve Salazar●  
 Irina Salazar●  
 Andrea Salcido  
 Tess Sales-Agoncillo  
 Mayra Salgado  
 Cedrick D. Sallis●  
 Cristina Samonte  
 Evelin Santos●  
 Rev. Edward▲ and Linda Sarden  
 Joan E. Savage●  
 Hannah Schaefer  
 Diane Scholz  
 David Schreier  
 W. Widick Schroeder  
 Nancy P. Schubert  
 Caroline Schulte

Laura Schwab● and Daniel Pinkert  
 Ilana Schwartz Bley  
 Mina Seetharaman  
 Monica Segura  
 Alyssa Seisser  
 Carla Serrano●  
 Anne and Eric Shain  
 Merle Shapera  
 Susan H. Shapiro  
 Dannielle Shaw  
 Hannah Shefsky  
 Lynne Shutan  
 Daniella Silva  
 Andrea E. Silva Alvarez●  
 Rebecca S. Silverman  
 Jaclyn Sliger  
 Barbara Slinker  
 Anna Sokolowski  
 Alejandro D. Solano●  
 Angelina Sorika  
 Kurtis M. Soroka  
 Megha Srinivasan  
 Lesley Stein Peters  
 Tatum Stewart●  
 Sara J. Stewart  
 Amy Stocker  
 MaryAnn Stoermer  
 Cynthia Stoffel●  
 Katherine Strathmann  
 Cara Strom●  
 Elein Suarez●  
 Cecilia Suh  
 Annette Sutherland  
 Lois Taft  
 Jessica Tapia●  
 Victoria Tate  
 Terrick L. Taylor●  
 Leonard Tenner  
 Antoinette and Alex Thiele  
 Mary Thomas  
 Diana Thompson  
 Zatonya N. Threatt●  
 Njefris Timagen●  
 Rosie Tingpalpong  
 Adilene Torres●  
 Lizette Torres  
 Selene Torres  
 Meredith and Keith Travers  
 Briana Trevizo Gee●  
 Malgorzata Truszkowska  
 Maria Tuazon  
 United Way of Southeastern Pennsylvania  
 Bruce E. Unterman  
 Madeline Urban  
 Jennifer Uycho  
 Mark Vajaranant  
 Lety Valladerez●  
 Barb Vana  
 Linda Vander Naald  
 Sarah Vanderwicken

Beatriz Vargas●  
 Satirah M. Varner●  
 Lisa Vazquez●  
 Sean Veal  
 Joyce Vela  
 Gerardo Velasco●  
 Irene Villalpando●  
 Jose M. Viruet●  
 Rebecca and Andris Vizulis  
 Kathleen M. Voss  
 Dianna Voss  
 Walder Charitable Fund  
 Matthew Walsh●  
 Julie Wang  
 Ron Weiner  
 Rachel S. Weiss  
 Marcie Weiss  
 Rebecca Wellisch  
 Anna and Michael James Warble  
 Katie Wiest  
 Marshelle Williams●  
 Darnell Williams  
 Katrise L. Williams●  
 Yolanda Williams  
 Kara Windsor  
 Hannah Wolff  
 Sophia Wolfinger  
 Vicki Wolfinger  
 Jeanne Wolken  
 D'Artis Wright●  
 Elizabeth A. Wunschel  
 Daisy Wynn●  
 Michelle Wyszomirski●  
 Yi-An Yang  
 Roman Yevstihnyeyev  
 Alex Yukhvidin●  
 Alana Zalas  
 Yasmin Zaragoza●  
 Donald Zeigler  
 Laura Zimmermann  
 Therese Zott  
 Alex and Bianca Zuellig  
 David Zupko

#### Matching Gifts

Abbott Laboratories  
 Adobe Systems, Inc.  
 Callaway Golf Company  
 Cigna Foundation  
 Expedia  
 Fidelity Charitable  
 Fox Corporation  
 Google Inc.  
 Henry Crown and Company  
 Horizon Therapeutics  
 MassMutual  
 Pepsico Foundation  
 Robert R. McCormick Foundation  
 The Walt Disney Company Foundation  
 UnitedHealth Group

#### In-Kind Donations

Aimee Anderson  
 Neova Antonik  
 Bang Bang Pie & Biscuits  
 Calvine Bowen  
 Sylvie Brick◆  
 Bright Endeavors  
 Alissa Carlson  
 Lynne Clapman  
 Cellar Angels  
 Classic Kids Photography  
 Crosstown Fitness  
 Jean Crovetti  
 Cuddle Bunny  
 Fifth Generation, Inc.  
 Humboldt House  
 Richard● and Sandra Hutson  
 Abha Kapila  
 Danielle Klinsenber  
 Sarah Kuchar  
 Lacey Johnson◆◆  
 Cathy Junia●  
 Lake County Community Foundation  
 Le Sud Chicago  
 Young J. Lee  
 Brian P.▲ and Michele Marsella  
 Lory Mishra◆  
 George Nolan  
 Tim O'Day  
 Offset BBQ  
 Martha Perritt●  
 Piazza Bella  
 Helen Potsic  
 Remy Bumpo Theatre Company  
 Revolution Brewing  
 Laurabelle Roderick  
 Temperance Brewing  
 Timeline Productions  
 Steve Urban  
 Wintrust Wealth Management  
 Betty Wood

#### COMMEMORATIVE GIFT In Memory Of

NORMA CAPE  
 William Cape  
 ARDEN FREDERICK  
 Earl Frederick  
 RICHARD "DICK" HUTSON  
 Virginia and John Andersen  
 BMO Harris Bank  
 John Bausch  
 Lawrence and Ann Hartman Brown  
 Margaret Burke  
 Brenda and Walter Bushala  
 Richard R. and Melanie H. Clark  
 Nancy Coolley  
 Maureen and Thomas Cox  
 Linda Cushman  
 Anne Durkin

Don and Barbara Enns  
 Frances and David Griffin  
 Kendall Griffith  
 Ann Hajicek  
 Janis Hartman  
 Jeff Herriman  
 Renee and Bruce Hochberg  
 Michael D. Horton and Lesa M. Vidovic  
 Eugene Hotchkiss III  
 David Hunt  
 Byron Hutson  
 Barbara Jane Irwin  
 Peter Jones and Marian Percy  
 Lynn Joy  
 Marie Kaufman  
 Suzanne and Jim Kenney  
 Patricia H. Kleeman  
 Mary Knight  
 Carmen Lago  
 Jerry and Fay Ligon  
 Paul Ligon  
 Barry Lutz  
 Jay Lynch  
 Carolyn Marsolai  
 Scott A. McDonald  
 Virginia McTier  
 Nancy and Dave Napalo  
 Anne and John O'Connor  
 Elizabeth and James Peterson  
 Cynthia Petrie  
 Herbert Prochnow  
 Steve and Lucille Ramsey  
 Steve Reinhart  
 Marybeth Robb  
 John and Audrey Rosenheim  
 Susan and David Rossi  
 Diane Scholz  
 Kevin, Norman, and Rosalie Smith  
 Leonard Tenner  
 Thomas Toser  
 Joel Tune  
 Bert and Barbara Weller  
 Elizabeth and Robert Wood  
 Patricia C. Wood  
 Anna Jean Woroch

NAN MAHAFFY  
 Elaine Coldren●  
 Lee Francis●●  
 Patricia Hannon●  
 Melissa Hilton●  
 Caroline Hoke●  
 Judith Horwitz●  
 Cathy Junia●  
 Kanako Kawai Shuaipaj●  
 Jessica Korpics  
 Rebecca Lapat●  
 Kathleen Laslo●  
 Dhanya Limaye●  
 Lisa B. McKenna●  
 Shannon Metzger●  
 Nivedita Mohanty●  
 Margaret Moore  
 Vanessa Rivas-Lopez●

Angkana Roy●  
 Nour El-Houda Sahraoui●  
 Laura Schwab● and Daniel Pinkert  
 MaryAnn Stoermer  
 Amy Valukas●  
 Jaclyn Walsh●  
 JULIANA MOLOSKY●  
 Danka Kormosova  
 KATHLEEN NAURECKAS  
 Sara● and Ted Naureckas  
 JOSEPH MARCELLA NIZNIK  
 Charlotte M. Niznik  
 JAMES WILBERT RENDER  
 Anonymous  
 Meredith Berlin●  
 Emily Bettencourt●  
 William Burley  
 Nicole C. Camardo●  
 Thomas Campbell  
 Yesenia Ceja●  
 Allison Clark Young●  
 Evelyn Cortes●  
 Sarah Fitz●  
 Debbie Fuchs, Cindy Tapper, Andy Goldberg and Mike Pontrelli  
 Michael and Deena Friedman  
 Patricia Gammon  
 Mark and Katherine Gibson  
 Judith E. Gill  
 Judith and Philip Graff  
 Keith Hebeisen  
 Melanie Hoffman  
 Caroline Hoke●  
 Nilusha Jayasinghe●  
 Ashley C. Levitan●  
 Mary McNamara●  
 Stephanie Mora●  
 Kimario Murray●  
 Y. S. and Suguna Murthy  
 Cathy Parr  
 Katie Pascoe  
 Barbara Pratt  
 Sarah Quirk●  
 Nagaraja and Usha Raghu  
 Shruti Raghu  
 Ana Saavedra●  
 Linda G. Silverstein  
 Kiersten Solis●  
 Glen Spear and Myra Wagner  
 Sherri Spear  
 Amy Valukas●  
 Therese Zott  
 LAWRENCE SHEFSKY  
 Jay Shefsky

**In Honor Of**  
 ASSOCIATE BOARD  
 Lee Francis●●  
 JASMINE MJ CHANG  
 Yi-An Yang  
 LINDA CUSHMAN▲●  
 Denise Macey  
 Andrew Rubenstein

CHARLIE CZEREPAK  
 Steven Geiermann  
 Eric Larson  
 DEVELOPMENT TEAM  
 Mayumi Swanson●  
 SARA ELSASSER AND TIM HOLBROOK  
 Sara and Steven Loevy  
 Diane and David Sigman  
 ERIE CASE MANAGEMENT TEAM  
 Richard C. Rutschman  
 LIZ FELDMAN●  
 Janice Benson●  
 Missy Fleming  
 LIZ FELDMAN● AND AVERY HART  
 Peter and Aviva Levavi  
 MISSY FLEMING  
 Rachel Hayman  
 Paul Waytz  
 MARY KAY FOLEY●  
 Michelle Byrne●  
 Janet Ferguson●  
 Nicole E. Quien●  
 Jacqueline McSparron●  
 Sara Naureckas●  
 Amy Valukas●  
 Kimberly Williams●  
 LEE FRANCIS●●  
 David Meyers and Roberta Strickler  
 Lolli Zarin  
 KATHY GARNEAU  
 Joanne Burgess  
 STEVE GEIERMANN  
 MaryAnn and Charlie Czerepak  
 MITA SANGHAVI GOEL  
 Kenzie A. Cameron  
 MELISSA HILTON●  
 Laura April  
 Jeffrey Sherman●  
 CATHY JUNIA●  
 Jeffrey Sherman●  
 Koichi Swanson  
 SUSAN KORALIK  
 Linda Cushman▲●  
 NATALIE RODRIGUEZ  
 Mita Goel  
 LIDA SCHENKIER  
 Elizabeth R. Schenkier  
 JILL SIMON SVOBODA  
 Susan and Dwight Sipprelle  
 TINA WHEAT●  
 Alona Anspach  
 SKY ZAMORA  
 Nancy Zamora

## ERIE FAMILY HEALTH CENTERS BOARD MEMBERS AND AFFILIATIONS

Through December 31, 2022

### ERIE FAMILY HEALTH CENTERS BOARD OF DIRECTORS

#### Officers

Brian P. Marsella  
Chair

Rosalie Alicea  
Vice Chair

William G. Kistner  
Treasurer

Celeste Castillo  
Secretary

#### Board Members

Matt Aaronson  
Managing Director  
and Senior Partner  
The Boston Consulting Group

Rosalie Alicea  
Reyes Holdings, LLC

Betzy Berganza  
Director of Health  
and Human Services  
YWCA Metropolitan Chicago

Nancy Bock  
Former Executive Director  
HealthReach, Inc.

Michael Boyd  
Community Volunteer

Celeste Castillo  
Community Volunteer

Ernest Chang  
Senior Advisor  
BMO Harris Bank, N.A.

Michael Cole  
President, Keystone  
Aetna Health, Inc.  
Pennsylvania

Linda Cushman  
Former Principal  
Hewitt Associates

Carolyn Dickens  
Assistant Professor  
College of Nursing  
University of Illinois  
at Chicago

Lisa Dykstra  
SVP & Chief Information  
Officer  
Ann & Robert H. Lurie  
Children's Hospital of Chicago

Iman Emamifard  
Community Volunteer

William G. Kistner  
Retired Partner  
Ernst & Young

Brian P. Marsella  
President  
HPS/PayMedix

Eric Mayeda  
Director  
The Chartis Group, LLC

Judy Mendez  
Community Volunteer

Richard J. Romanowski  
Community Volunteer

Rev. Edward Sarden  
Senior Minister  
Christian Church Center

Alice Setrini  
Attorney, Executive Director  
Mary and Michael Jaharis  
Health Law Institute  
DePaul University  
College of Law

Jill Simon Svoboda  
Community Volunteer

Katherine Wilson  
Community Volunteer

### ERIE FAMILY HEALTH CENTERS LEADERSHIP

#### Executive Leadership Team

Lee Francis, MD, MPH  
President and CEO

Vicki Whildin, MA  
Chief Operating Officer

Amy Valukas, MPH  
Chief Population Health  
Officer

Caroline Hoke, MD  
Chief Clinical Officer

David C. Bruce, CPA  
Chief Financial and  
Administrative Officer

Nicole Kazee, PhD  
Senior Vice President  
Strategy & Business  
Development

Melissa Hilton  
Vice President Development  
Executive Director  
Erie Family Health Foundation

Raheel Shahzad  
Vice President of Finance

Valeria Stokes, EdD  
Vice President Human  
Resources

Kellie Medious  
Associate Vice President  
Patient Operations and DEI  
Officer

Robin Varnado  
Associate Vice President  
of Operations

#### Associate Board

Julie Awad  
Sylvie Brick  
Harte Brick  
Gauri Brown  
Michaela Ciulla  
Celeste Goering  
Jennifer Hill  
Lacey Johnson  
Jeffrey Kunkel\*  
Justin Levonyak  
Jon Lewis  
Dwight McTizic\*  
Lory Mishra  
Brook Osborn\*  
Julie Pfeffer\*  
Ava Regan\*  
Casandra Roy  
Carla Rubalcava  
Jared Ticktin  
Megan Rogers Zaccaro\*

### FRIENDS OF ERIE EVANSTON/SKOKIE HEALTH CENTER

Missy Fleming  
Co-Chair

Kathy Tisdahl  
Co-Chair

Sara Elsasser  
Elizabeth Feldman

Marya Frankel  
Trina Janes

Lauren Keenan-Devlin  
Mary Leopold

Bonnie Lytle  
Val Weiss

### ERIE FAMILY HEALTH FOUNDATION BOARD OF DIRECTORS

Nancy Bock  
Chair  
Former Executive Director  
HealthReach, Inc.

Amy Blumenthal  
Managing Partner  
Gould & Ratner

Linda Cushman  
Former Principal  
Hewitt Associates

Elizabeth Feldman, MD  
Retired Site Medical Director  
Erie Evanston/Skokie  
Health Center

Lee Francis, MD, MPH  
President and CEO  
Erie Family Health Centers

Hon. Susan Garrett  
Civic Leader  
Former Illinois State Senator

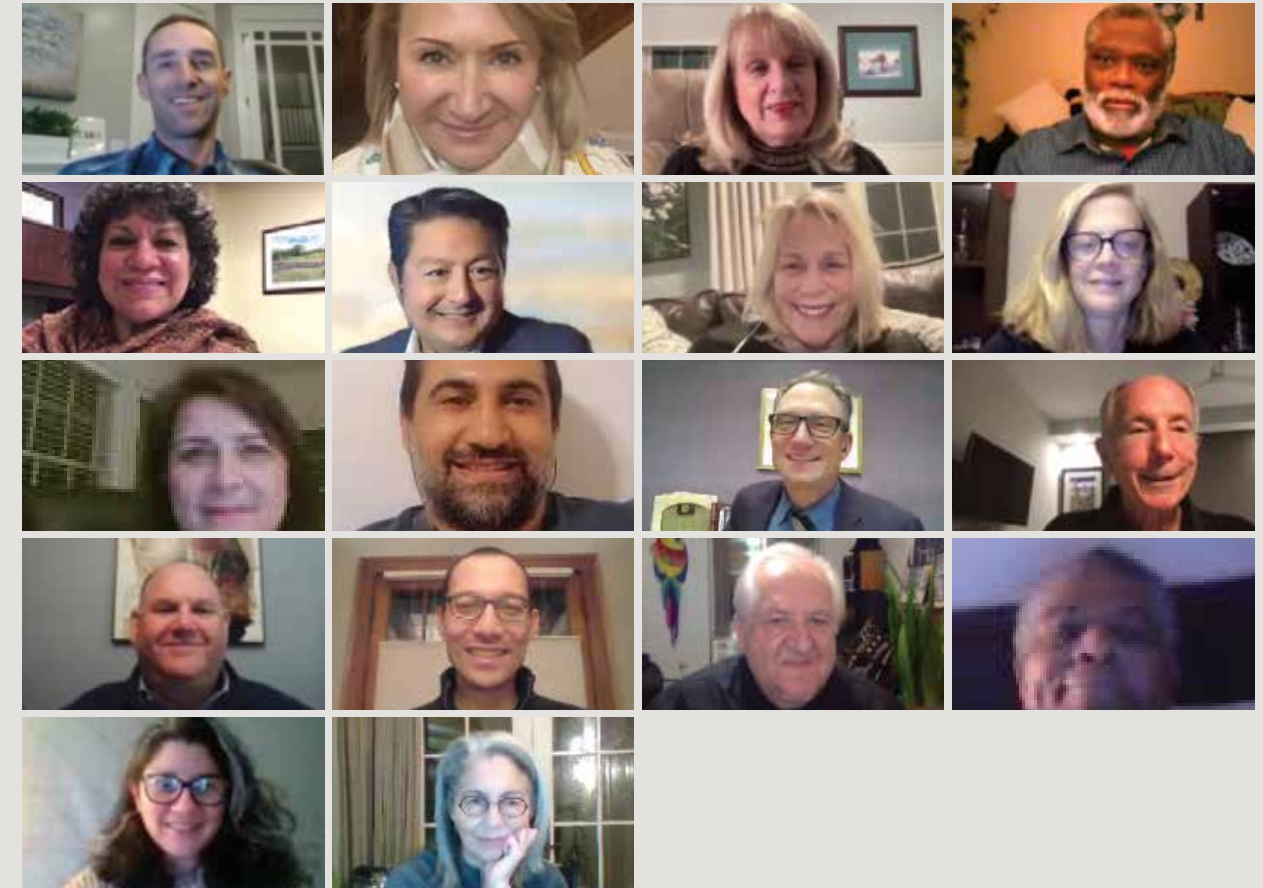
Feyce Peralta, MD, MS, FASA  
Obstetric Anesthesiologist  
Northwestern Medicine

Gary Raju  
Chief Operating Officer  
Prota Ventures

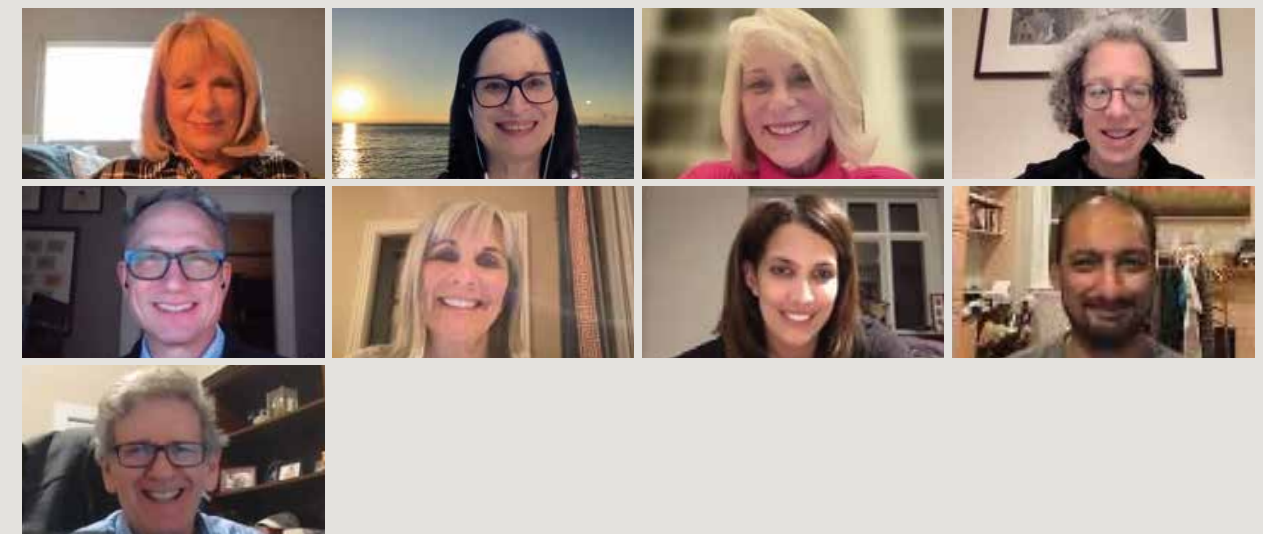
Jeff W. Sherman, MD, FACP  
Executive Vice President  
Chief Medical Officer  
Horizon Therapeutics

\*Term ended in 2022

### ERIE FAMILY HEALTH CENTERS BOARD OF DIRECTORS



### ERIE FAMILY HEALTH FOUNDATION BOARD OF DIRECTORS



ERIE'S BOARDS OF DIRECTORS MET VIRTUALLY IN 2022. TOP ROW DOWN, LEFT TO RIGHT:

#### ERIE FAMILY HEALTH CENTERS BOARD

Matt Aaronson, Betzy Berganza, Nancy Bock, Michael Boyd  
Celeste Castillo, Ernest Chang, Linda Cushman, Carolyn Dickens  
Lisa Dykstra, Iman Emamifard, Lee Francis (President and CEO), Bill Kistner  
Brian Marsella, Eric Mayeda, Richard Romanowski, Rev. Ed Sarden  
Alice Setrini, Jill Svoboda

NOT PICTURED:

Rosalie Alicea, Michael Cole, Judy Mendez, and Katherine Wilson

#### ERIE FAMILY HEALTH FOUNDATION BOARD

Nancy Bock, Amy Blumenthal, Linda Cushman, Liz Feldman  
Lee Francis, Hon. Susan Garrett, Feyce Peralta, Gary Raju  
Jeff Sherman

**52.3%**  
of Erie's Board of Directors  
are patients or  
parents of patients.



Alexia Ibarra peeks at the book that was given to her at her Erie exam. Through the Reach Out and Read Program, Erie provides free books to young patients ages six months to six years during their well-child exams to promote early literacy skills and encourage health language development.



**STAY CONNECTED WITH ERIE**

FACEBOOK  
[www.facebook.com/eriefamilyhealth](http://www.facebook.com/eriefamilyhealth)

INSTAGRAM  
[www.instagram.com/eriefamily](http://www.instagram.com/eriefamily)

LINKEDIN  
Erie Family Health Center

TWITTER  
[www.twitter.com/eriefamhealth](http://www.twitter.com/eriefamhealth)

VIMEO  
[www.vimeo.com/erie](http://www.vimeo.com/erie)