

<p style="text-align: center;"><b>COST CENTER ACCOUNTING</b> <b>END USER TRAINING DOCUMENTS</b></p>
---

## **KP97 - CCA Copy Plan to Plan**

### **Functionality**

We can copy previous year's plan to next year plan.

### **Scenario**

Management wants planning to be done in a fast manner. Last year's plan figures can be copied to the next year plan. These copied figures then can be revalued based on % revaluation.

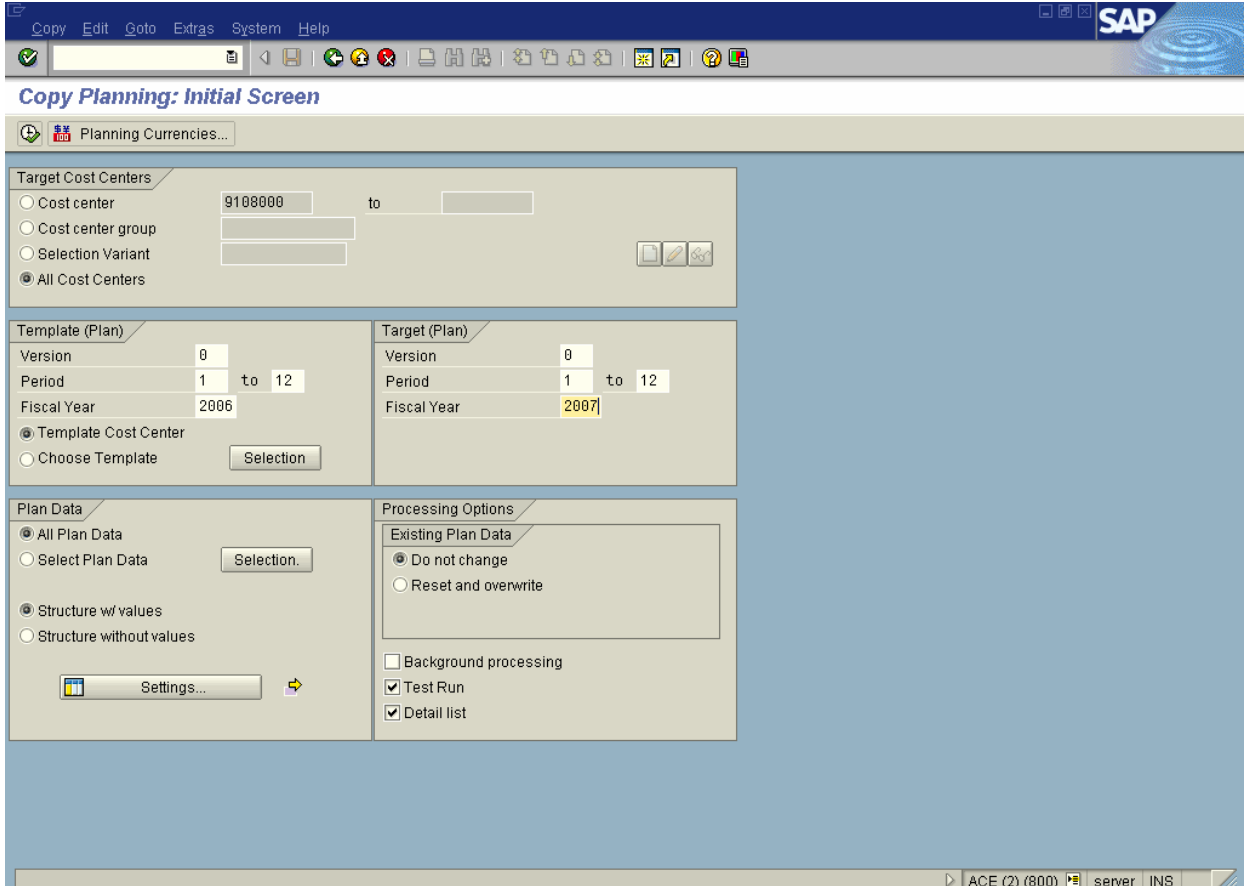
### **Requirements**

A plan must exist as a source plan.

Menu Path	Accounting → Controlling → Cost Center Accounting → Cost Center Accounting → Planning → Planning Aids → Copy → KP97 - Copy Plan to Plan
Transaction Code	KP97

1. Double Click on **KP97 - Copy Plan to Plan**

# COST CENTER ACCOUNTING END USER TRAINING DOCUMENTS

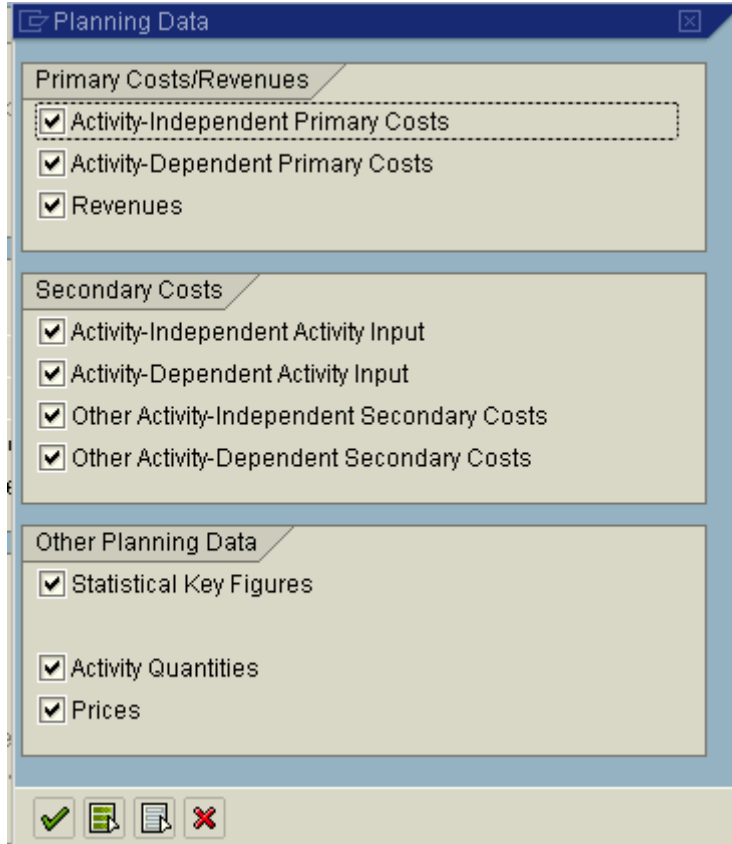



2. Click <radio button> **All cost centers**  All cost centers.
3. Update the following fields:

Field Name	Description	Values
<b>Template (plan)</b> From Period	Template from period	1
<b>Template (plan)</b> To Period	Template to period	12
<b>Template (plan)</b> Fiscal Year	Template Fiscal Year	2006
<b>Target (plan)</b> Version	Plan Version	0
<b>Target (plan)</b> From Period	Target from period	1
<b>Target (plan)</b> To Period	Target to period	12
<b>Target (plan)</b> Fiscal Year	Target Fiscal Year	2007

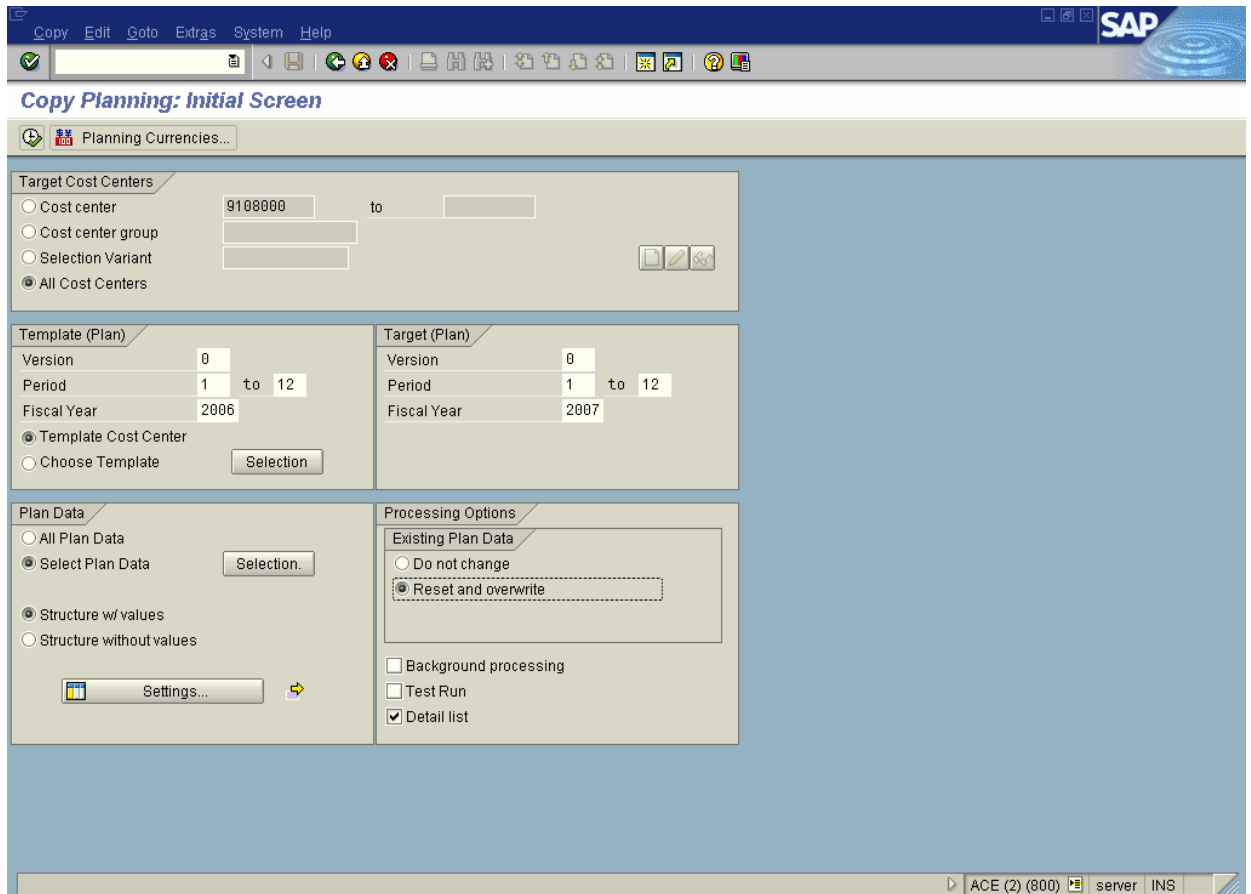
4. Click **Selection.** Button


**COST CENTER ACCOUNTING**  
**END USER TRAINING DOCUMENTS**



5. De-activate <radio button> **Revenues**.
6. Click **Enter** .

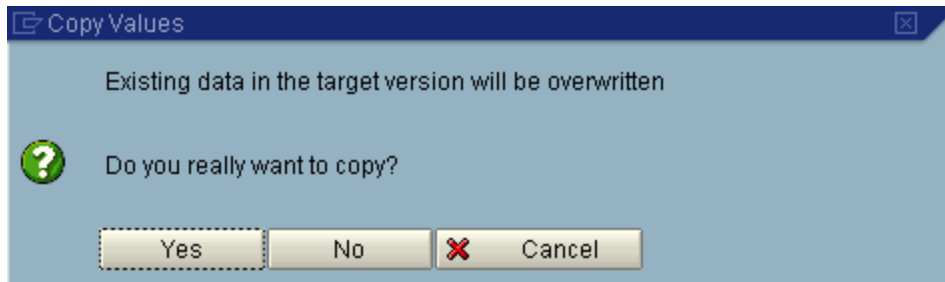
# COST CENTER ACCOUNTING END USER TRAINING DOCUMENTS



7. Click <radio button> **Reset and overwrite**  Reset and overwrite .
8. Click <checkbox> **Test run**  Test run to run the process in productive mode.
9. Click the **Enter**  button.

**COST CENTER ACCOUNTING**  
**END USER TRAINING DOCUMENTS**

10. Click **Execute** 



11. Click **Yes** Button 

# COST CENTER ACCOUNTING END USER TRAINING DOCUMENTS

The screenshot displays the SAP 'Copy Planning: Detail List' window. The interface includes a menu bar (List, Edit, Goto, Settings, System, Help) and a toolbar with various icons. Below the toolbar, there are several input fields and buttons for navigation and settings.

Key parameters shown in the interface include:

- Controlling Area: 9100, A Grp Controlling area
- Template Version: 0, Plan/Act - Version
- Fiscal Year: 2006, Period 1 to 12
- Target Version: 0, Plan/Act - Version
- Fiscal Year: 2007, Period 1 to 12
- Cost Center: A11
- Processing Status: Update Run
- Copied Records: 13
- Existing Planning Data: Reset and Overwrite with Values

The main data is presented in a table with the following columns: Transaction text, DTy, Object ID, Cost Elem., StatKF, Resource, D, DepSrcType, TCurr, DTy, PObj. ID, DTy, SObj. ID, and Errors.

Transaction text	DTy	Object ID	Cost Elem.	StatKF	Resource	D	DepSrcType	TCurr	DTy	PObj. ID	DTy	SObj. ID	Errors
Planning primary costs													
	CTR	9108000	420003										
	CTR	9108000	420004										
	CTR	9108000	420005										
	CTR	9108000	420006										
	CTR	9108000	420007										
	CTR	9108000	420212										
	CTR	9119000	420003										
	CTR	9119000	420004										
	CTR	9119000	420005										
	CTR	9119000	420211										
	CTR	9119000	420401										
	CTR	9119000	420408										
Planning activities													
	ATY	9101011/1PDH01											

12. A list of copied plan values is displayed.