

F fantec

USB 3.0
SUPERSPEED ~ 5 Gbps

SERIAL eATA
3.0 Gb/s

INTERNAL COOLER

ENERGY+



4 HDD
3 BAY

SUPERSPEED
USB 3.0

6G
SATA III

4x 3.5" HDD CASE with eSATA & USB 3.0 ■ Model: QB-35US3-6G black



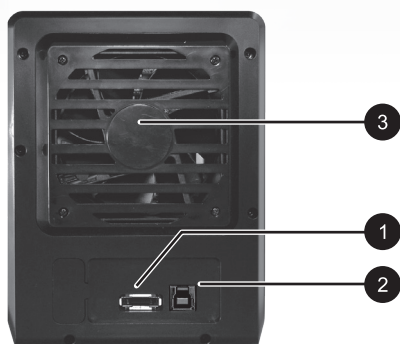
A FRONT PANEL



DESCRIPTION

- ① Blue power on
Orange standby
- ② eSATA on/off line
- ③ USB on/off line
- ④ eSATA in use / access
- ⑤ USB in use / access
- ⑥ Fan speed level 1
- ⑦ Fan speed level 2
- ⑧ Fan speed level 3
- ⑨ Synchronization 3 modes :
Blue When the PC is off, the device goes off in 15 seconds.
Orange When the PC is off, the device goes to sleeping mode.
Off Synchronization is off.
- ⑩ Power Presses 3 seconds to power off the device.
- ⑪ - ⑭ HDD1 / HDD2 / HDD3 / HDD4 active
- ⑮ Smart Fan automatic mode
- ⑯ Smart Fan manual mode
- ⑰ Interface switch
- ⑱ Synchronization mode switch
- ⑲ Smart fan Switch: auto, manual and fan speed from level 1 to level 3
Button 17 and 18 need to be pressed for 3 seconds to switch the device's mode.
This design will prevent accidental execution of these functions.

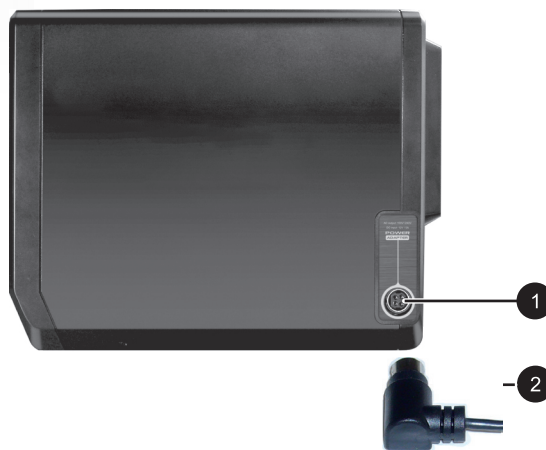
B REAR PANEL



DESCRIPTION

- ① eSATA port
- ② USB 3.0 port
- ③ Smart fan

C SIDE PANEL right



DESCRIPTION

- ① DC Jack
- ② DC Power

D HDD HANDLE



E FRONT COVER



F METAL FRAME



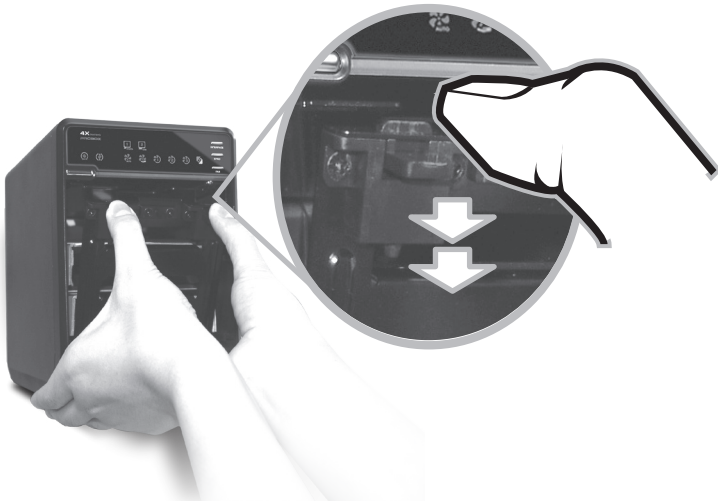
- A** Please use the provided handles to secure the 4 HDDs with screws.



- B** Press the circular deepening to open the cover.



- C** Press down the rib to detach the metal frame and remove it.



- D** Take the transport paper board out of the device.



- E** Slide 4 HDDs into the chassis and make sure they are securely installed in order from up to down.



NOTE: Make sure the HDD1 is securely installed in slot 1. Otherwise the PC may not recognize the device. The content of slot 2 - 4 may vary.

- F** Adjust the metal frame that was removed back to the chassis and close the cover (based on how it was opened in Step 2).

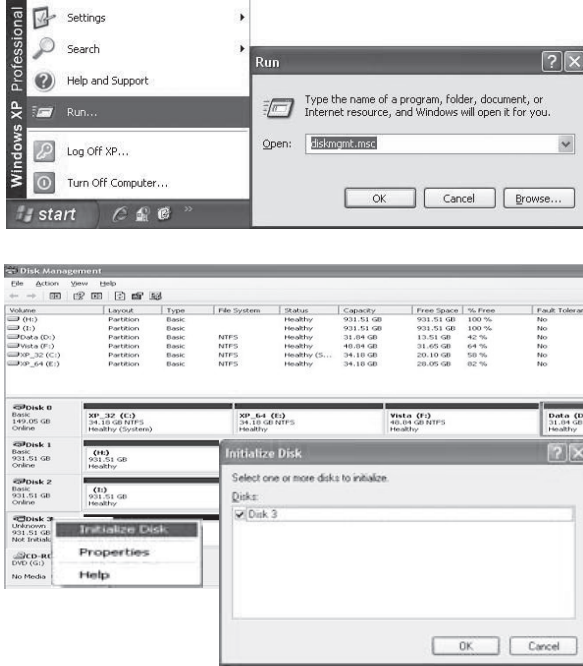
- G** Connect the FANTEC QB-35US3-6G to the power adapter. Follow this sequence: 1) power supply connect to the housing. 2) power supply connect with socket. Plug in USB or eSATA cable in the rear panel and power on the device.

- H** If the HDD is unformatted, you have to initialize it at your PC. Please run the steps as followed: At first click "Start", "Execute" at your Windows based PC and key in "diskmgmt.msc". After that please press the "RETURN" key.

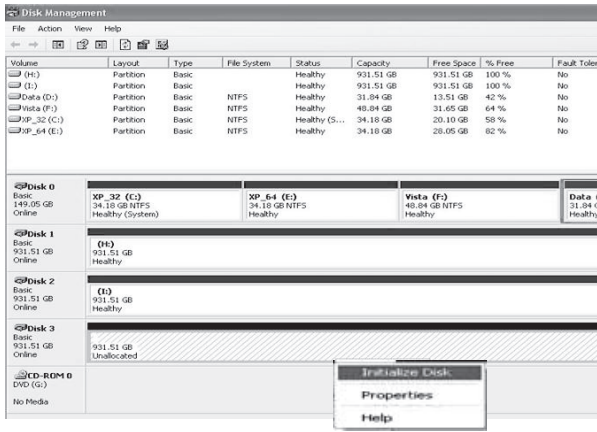
3 STEP

Windows 2000 / XP

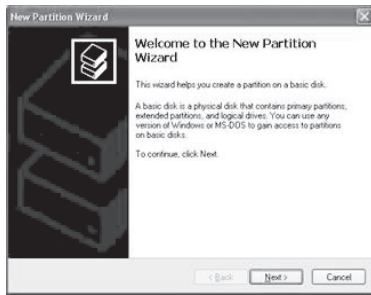
Diskmgmt.msc



Create a new partition and format the hard drive: Next→finish



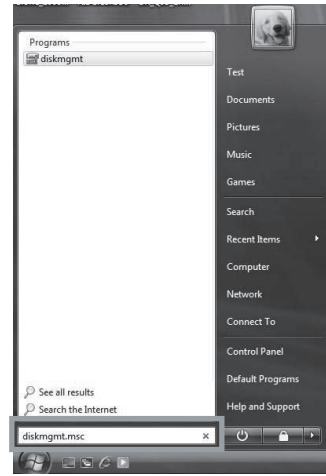
Format finished



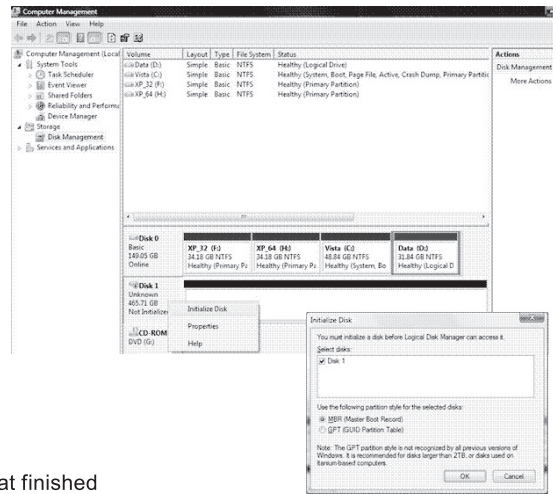
4 STEP

Win Vista / 7 / 8 (32 / 64bit)

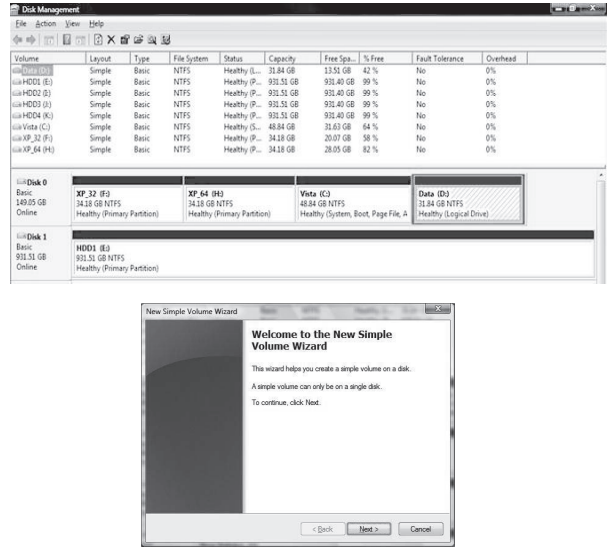
Diskmgmt.msc



Initialize Disk if it is a new one.



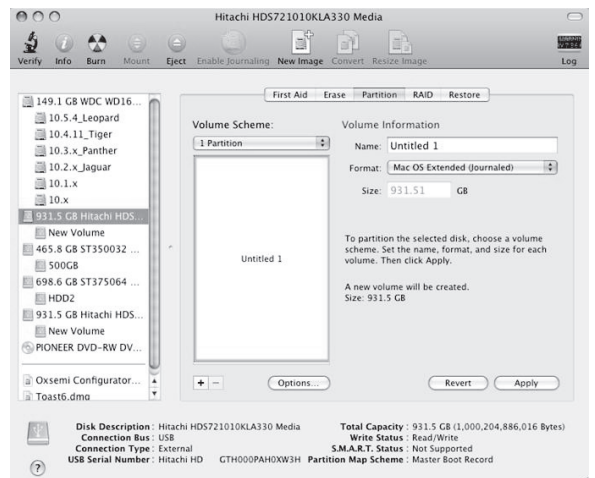
Format finished



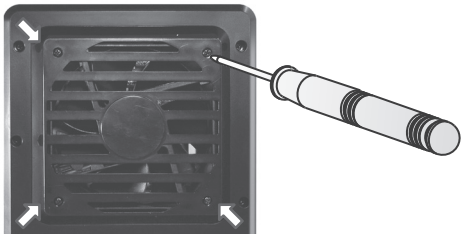
5 STEP

Macintosh 10.X O.S

In "Disk Utility" function to "Erase" or "Partition" disk.



- A** If the FANTEC QB-35US3-6G (2-4 HDDs installed) is connected to the PC with eSATA cable and the PC does not recognize these 4 SATA HDDs, please check if the eSATA controller supports **Port Multiplier** or update the eSATA driver version.
- B** If the FANTEC QB-35US3-6G (2-4 HDDs installed) takes too long to initial, please check if the HDD is securely installed or update the eSATA driver version.
- C** If the transfer rate seems to be too low, please check if the SATA HDD jumper is set up in 1.5 or 3.0 Gbps.
- D** If there is noise with the fan, unscrew the fan, take out the cover, clean the fan and assemble it back.



- E** If you forgot to attach the metal frame before you closed the cover, simply press the down the rib as shown below. The cover will slowly release and open outwards. Please do not attempt to open the cover with something sharp.



- F** To take the HDD out from the device, slightly press down the handle and pull it out.



- A** USB port of your PC must support power-off function so that the device would go to standby mode. Setting up motherboard's (power management) in S3 is strongly recommended. For more details, please refer to user guide of motherboard BIOS setting.
- B** Smart fan controlled by the built-in thermal sensor and it comes with 2 modes (auto / manual) and 3 levels of speed :

Low	below	45°C		1200rpm
Medium	between	45°C~55°C		1800rpm
High	hotter than	55°C		2500rpm
- C** Alternative the USB and eSATA interface can be connected at 2 working PCs but only 1 interface can be used at one time. You can switch between USB and eSATA by pressing the INTERFACE button at the FANTEC QB-35US3-6G. The interface selection is only for Macintosh to Macintosh or Windows to Windows system.
- D** Simply press the POWER button to power the device on and press the button for 3 seconds to power off the device.
- E** Operation System : Windows Vista / 7 / 8 / 8.1 (32/64bit), Macintosh 10.x, Linux
- F** Maximum HDD capacity: 4TB each HDD (status: August 2014), 4 single hard drives are displayed at PC (JBOD)
- G** USB3.0 transfer data up to 5 Gbps
eSATA transfer data up to 3 Gbps
- H** Hot-plug for USB / eSATA interface
- I** USB1.1 / 2.0 / 3.0 compatible

Operation Environment:

- Temperature: 0°C~ 60°C
- Humidity: 0%~ 90% R.H.



Please contact our support department with any questions!

www.fantec.de
www.fantec-forum.de
E-Mail: service@fantec.de