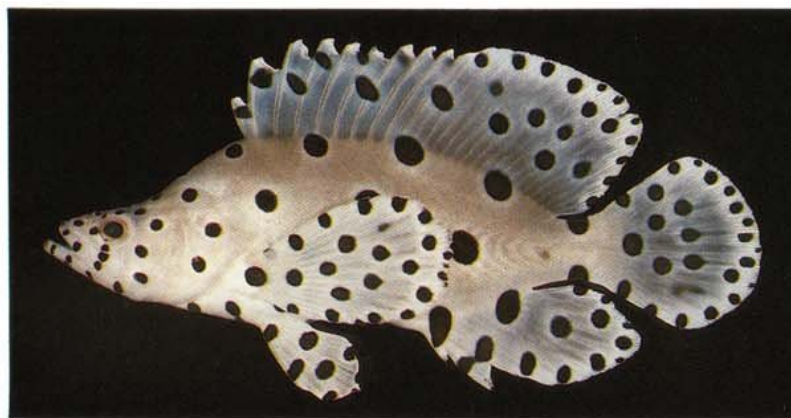


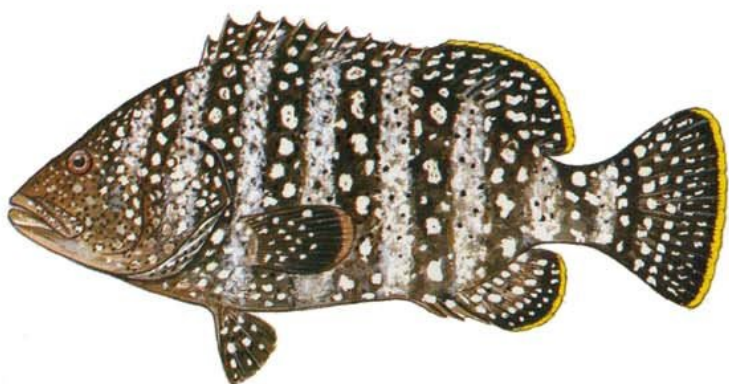
PLATE VI



a) *Cephalopholis urodeta*, 136 mm SL, Mauritius
(J.E. Randall)



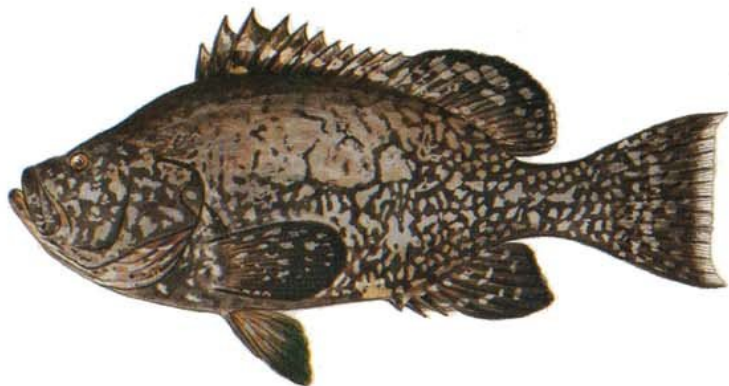
b) *Cromileptes altivelis*, 93 mm SL, Great Barrier Reef
(J.E. Randall)



c) *Dermatolepis dermatolepis*, Gulf of California
(P. Lastrico)



d) *Dermatolepis dermatolepis*, Gulf of California
(P. Lastrico)

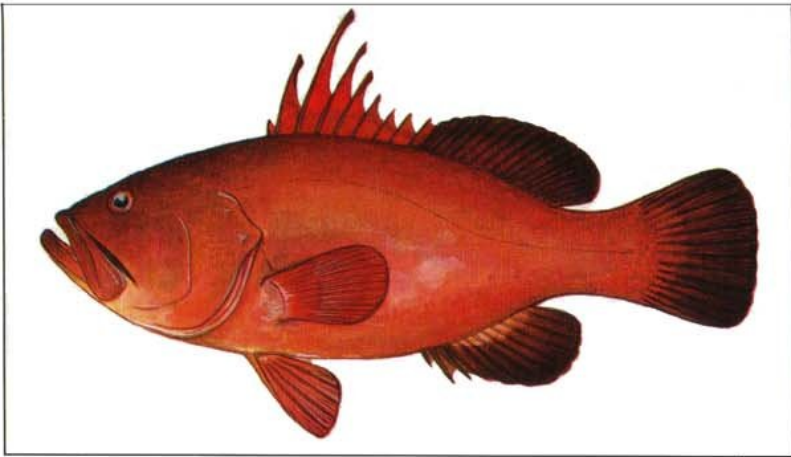


e) *Dermatolepis inermis*, ~500 mm TL, Caribbean Sea
(P. Lastrico)

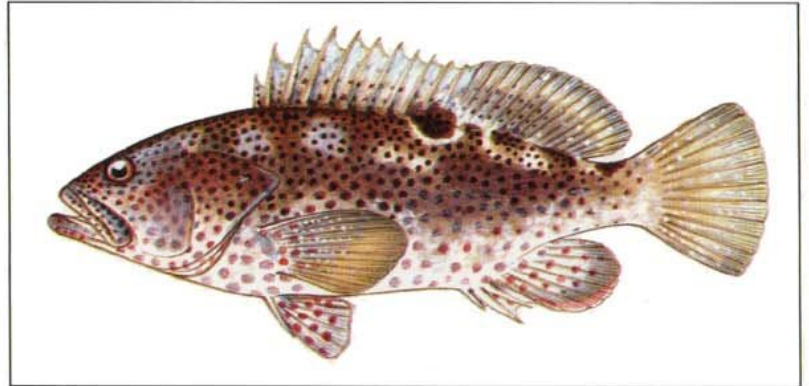


f) *Dermatolepis striolata*, ~500 mm SL, Kenya
(Smith and Heemstra, 1986)

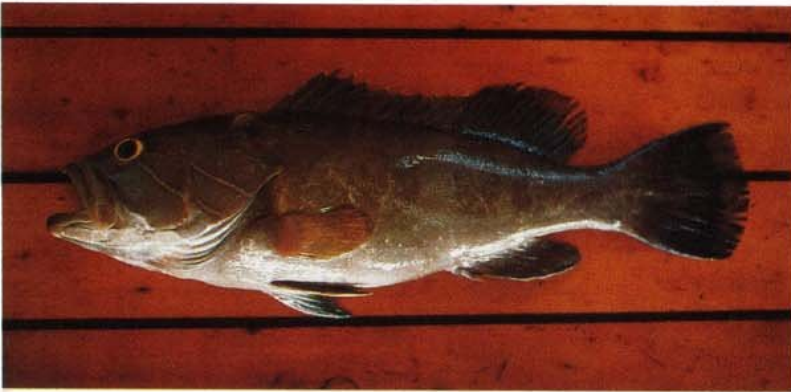
PLATE VII



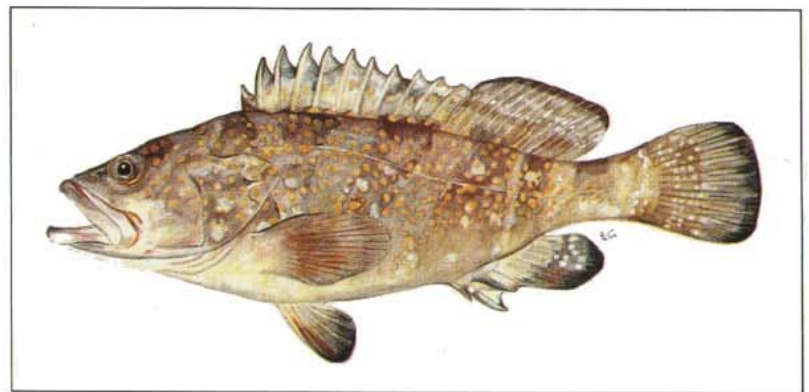
a) *Epinephelus acanthistius*, eastern Pacific
(P. Lastrico)



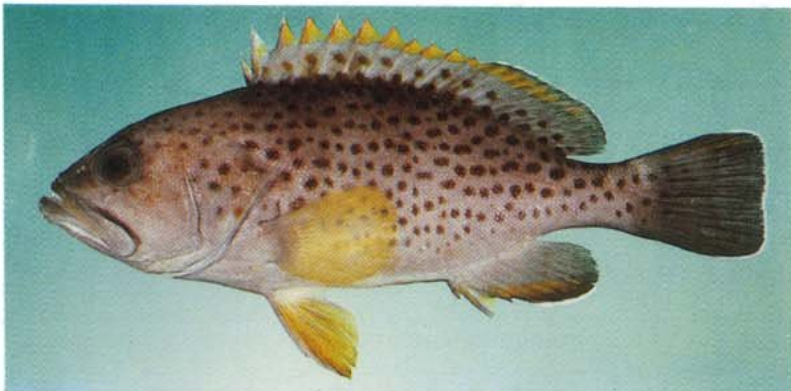
b) *Epinephelus adscensionis*, 275 mm SL
(P. Lastrico)



c) *Epinephelus aeneus*, 450 mm SL, Angola
(G. Bianchi)



d) *Epinephelus akaara*, 232 mm SL, Taiwan
(E. Heemstra)

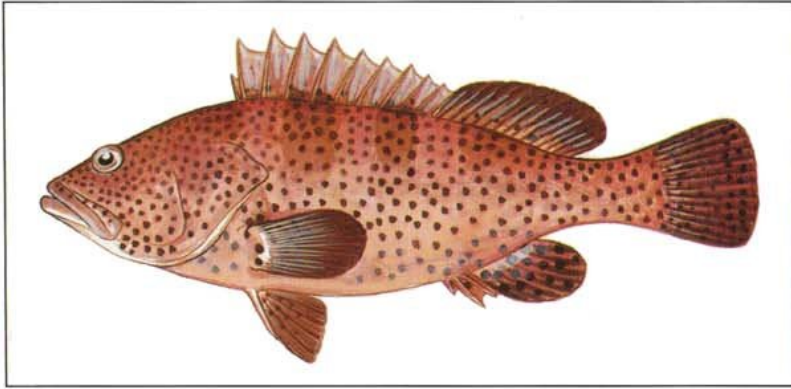


e) *Epinephelus albomarginatus*, 192 mm SL, Natal, South Africa
(J.E. Randall)



f) *Epinephelus amblycephalus*, 314 mm SL, Negros, Philippines
(J.E. Randall)

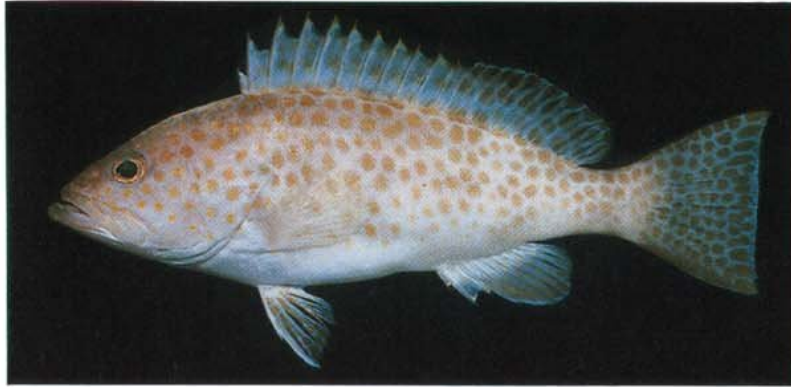
PLATE VIII



a) *Epinephelus analogus*, -760 mm TL, Panama
(P. Lastrico)



b) *Epinephelus andersoni*, 372 mm SL, Natal, South Africa
(J.E. Randall)



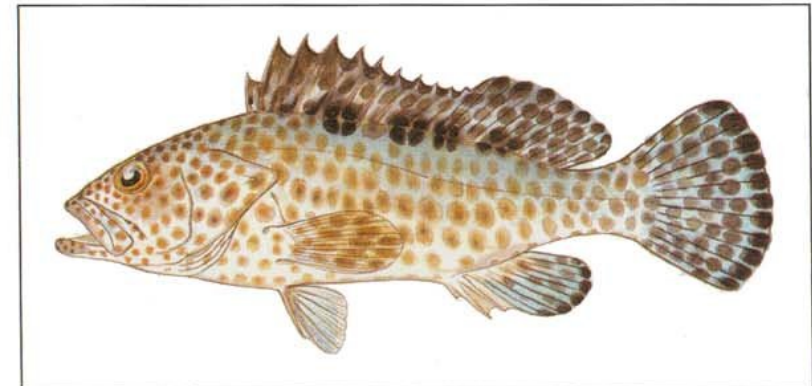
c) *Epinephelus areolatus*, 253 mm SL, Gulf of Aqaba, Red Sea
(J.E. Randall)



d) *Epinephelus awoara*, 301 mm SL, Makung
(RUSI)



e) *Epinephelus awoara*, 202 mm SL, Taiwan
(J.E. Randall)

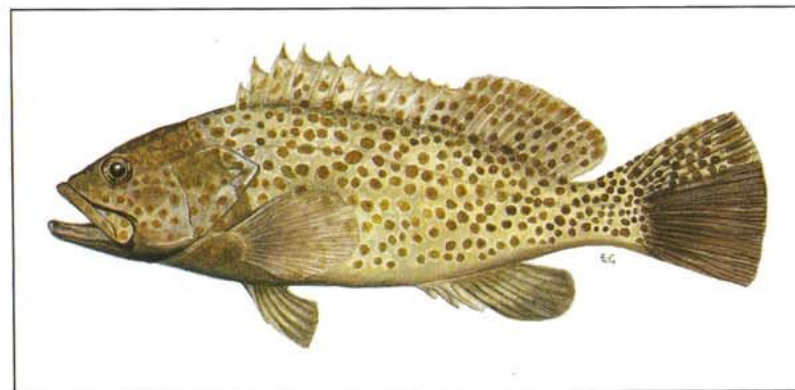


f) *Epinephelus bilobatus*, -230 mm TL, northwestern Australia
(P. Lastrico)

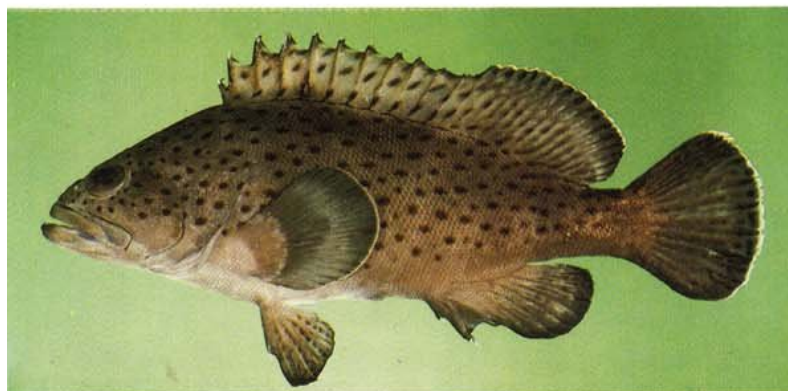
PLATE IX



a) *Epinephelus bleekeri*, 326 mm SL, Cochin, India
(J.E. Randall)



b) *Epinephelus bleekeri*, 193 mm SL, Taiwan
(E. Heemstra)



c) *Epinephelus bontoides*, 130 mm SL, Taiwan
(J.E. Randall)



d) *Epinephelus bruenus*, 437 mm SL, Penghu Islands
(P.C. Heemstra)



e) *Epinephelus bruneus*, 400 mm SL, Japan
(H. Masuda)



f) *Epinephelus caeruleopunctatus*, 330 mm SL, Bahrain, Persian Gulf
(J.E. Randall)