

PLATE X



a) *Epinephelus caeruleopunctatus*, Maldives
(J.E. Randall)



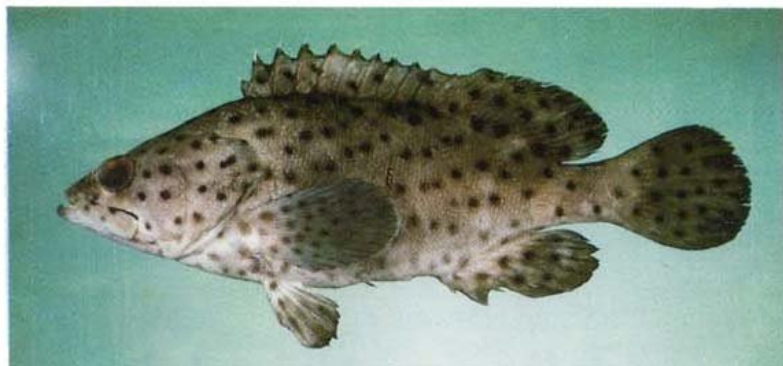
b) *Epinephelus chabaudi*, 330 mm SL, Transkei, South Africa
(P.C. Heemstra)



c) *Epinephelus chlorostigma*, 327 mm SL, Sudan, Red Sea
(J.E. Randall)



d) *Epinephelus coioides*, 323 mm SL, Bahrain, Persian Gulf
(J.E. Randall)

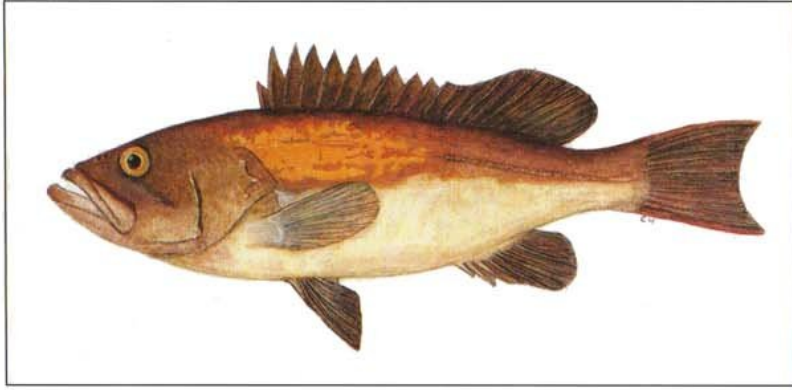


e) *Epinephelus corallicola*, 194 mm SL, Cebu, Philippines
(J.E. Randall)

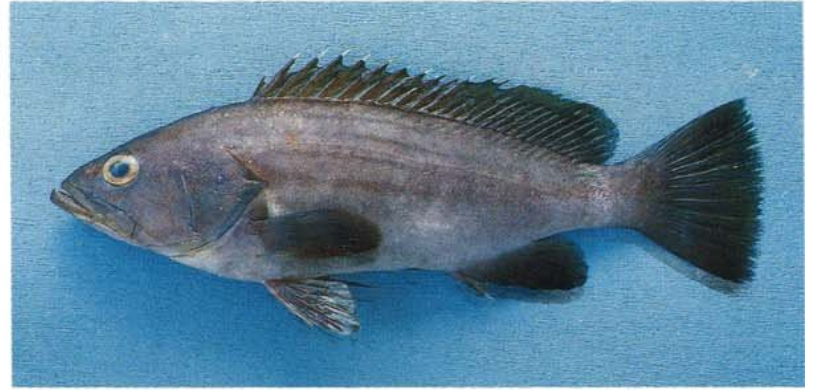


f) *Epinephelus corallicola*, 60 mm SL, Darwin, Australia
(P.C. Heemstra)

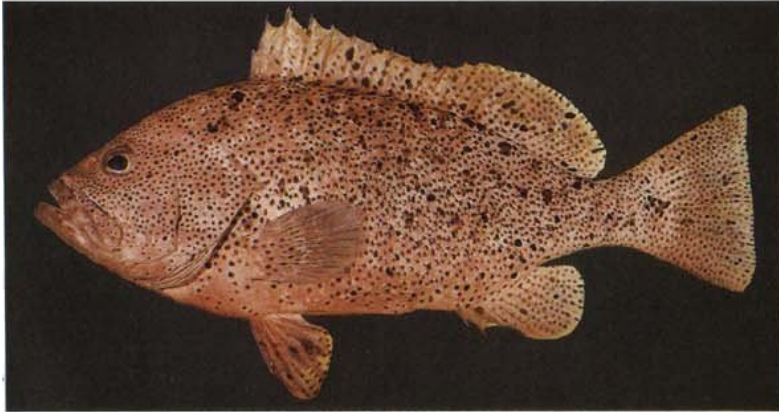
PLATE XI



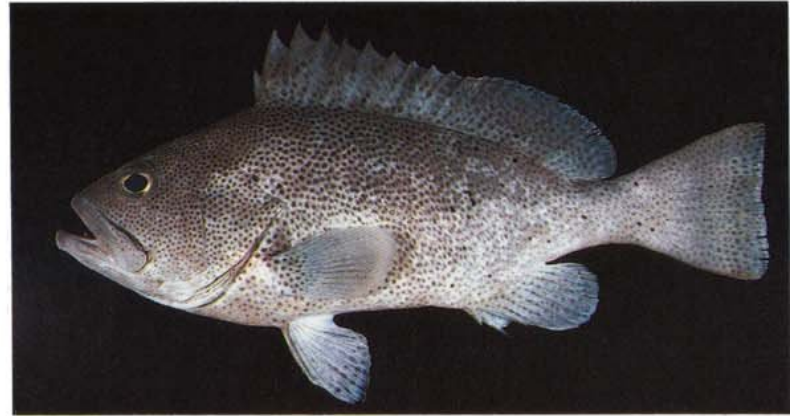
a) *Epinephelus costae*, 400 mm SL, Senegal
(E. Heemstra)



b) *Epinephelus costae* Gambia, Senegal
(M. Bellemans)



c) *Epinephelus cyanopodus*, 319 mm SL, Enewetak, Marshall Islands
(J.E. Randall)



d) *Epinephelus cyanopodus*, 180 mm SL, Enewetak, Marshall Islands
(J.E. Randall)

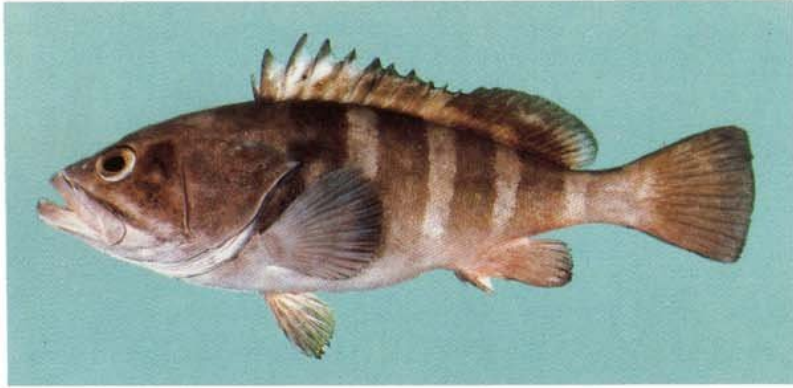


e) *Epinephelus daemeli*, 230 mm SL, Lord Howe Island
(I.E. Randall)

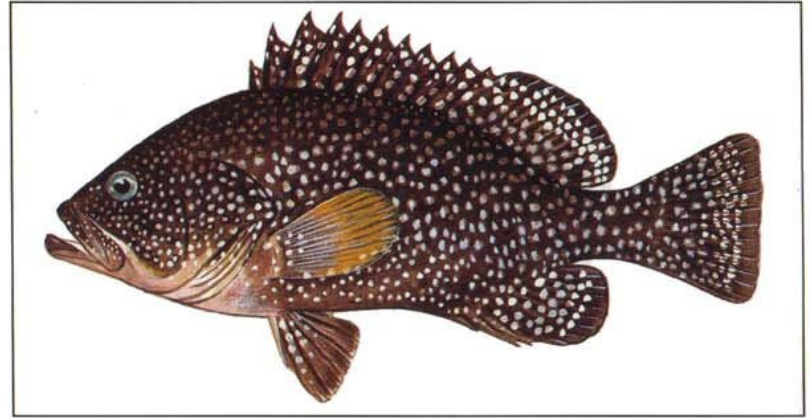


f) *Epinephelus darwinensis*, 535 mm SL, Timor Sea
(P.C. Heemstra)

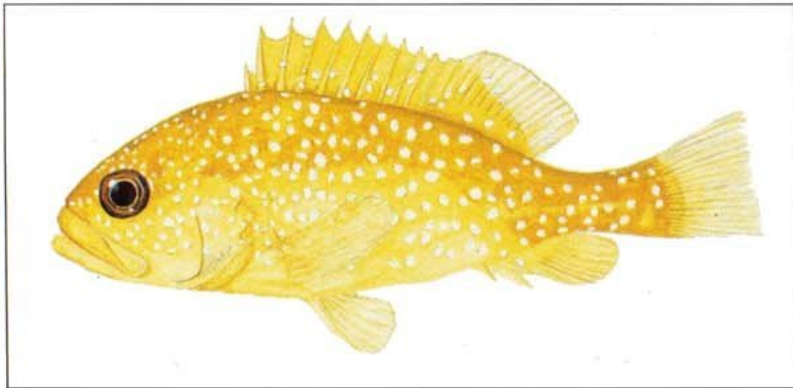
PLATE XII



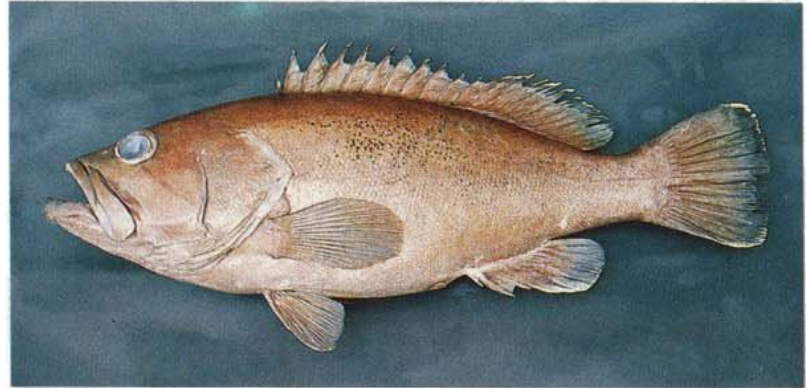
a) *Epinephelus diacanthus*, 327 mm SL, Cochin, India
(J.E. Randall)



b) *Epinephelus drummondhayi*, ~250 mm SL, USA, Atlantic Ocean
(P. Lastrico)



c) *Epinephelus drummondhayi*, 100 mm SL, USA, Atlantic Ocean
(J.E. Randall)



d) *Epinephelus epistictus*, 503 mm SL, Natal, South Africa
(P.C. Heemstra)

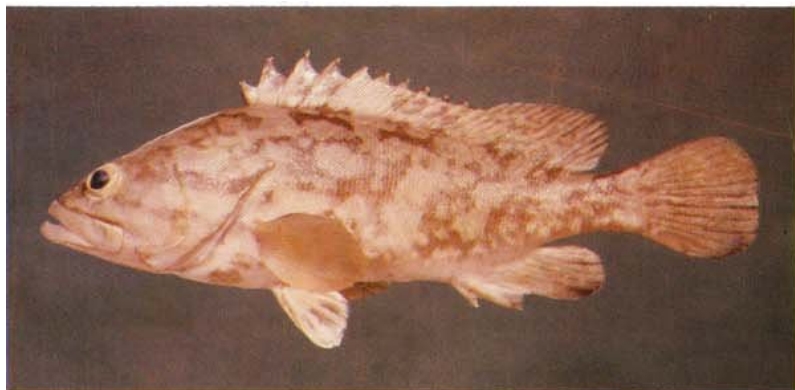


e) *Epinephelus epistictus*, 371 mm SL, Penghu Islands
(P.C. Heemstra)



f) *Epinephelus ergastularius*, Australia
(J.B. Hutchins)

PLATE XIII



a) *Epinephelus erythrurus*, 219 mm SL, Gulf of Thailand
(R. Rofen)



b) *Epinephelus fasciatomaculosus*, 205 mm SL, Taiwan
(P.C. Heemstra)



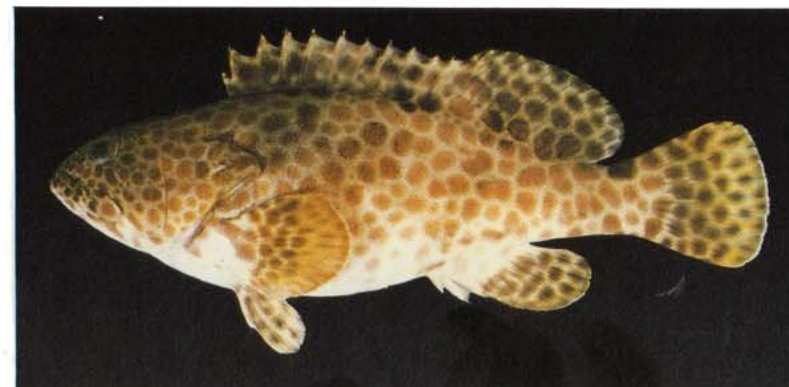
c) *Epinephelus fasciatus*, 218 mm SL, Nuku Hiva, Marquesas
(J.E. Randall)



d) *Epinephelus fasciatus*, 207 mm SL, Tahiti, Society Islands
(J.E. Randall)



e) *Epinephelus fasciatus*, 151 mm SL, Gulf of Aqaba, Red Sea
(J.E. Randall)



f) *Epinephelus faveatus*, 209 mm SL, Kovalam, India
(J.E. Randall)