

## PLATE XVIII



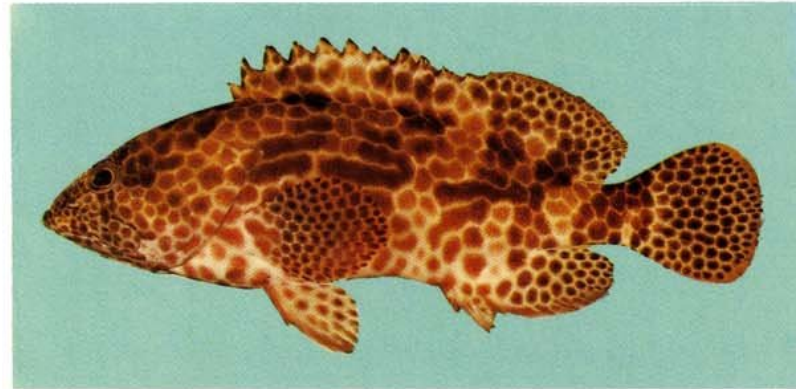
a) *Epinephelus malabaricus*, 316 mm SL, Natal, South Africa  
(J.E. Randall)



b) *Epinephelus marginatus*, -290 mm SL, Formigas, Azores  
(P.C. Heemstra)



c) *Epinephelus melanostigma*, 107 mm SL, Natal, South Africa  
(J.E. Randall)



d) *Epinephelus merra*, 172 mm SL, Tahiti, Society Islands  
(J.E. Randall)



e) *Epinephelus merra*, 63.3 mm SL, Peros, Chago Archipelago  
(Burhos)



f) *Epinephelus miliaris*, 430 mm SL, Bassas da India, Mozambique Channel  
(P.C. Heemstra)

## PLATE XIX



a) *Epinephelus morio*, - 230 mm SL  
(P. Lastrico)



b) *Epinephelus morrhuia*, 512 mm SL, Maldives Islands  
(J.E. Randall)



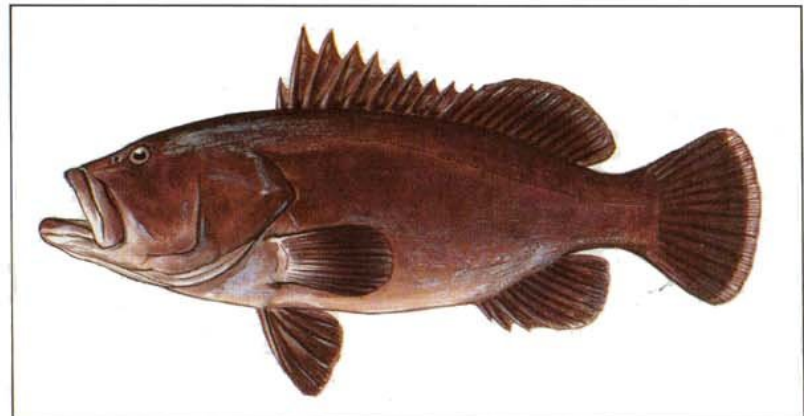
c) *Epinephelus multinotatus*, 519 mm SL, southern Mozambique  
(RUSI)



d) *Epinephelus multinotatus*, 340 mm SL, Bahrain, Persian Gulf  
(J.E. Randall)

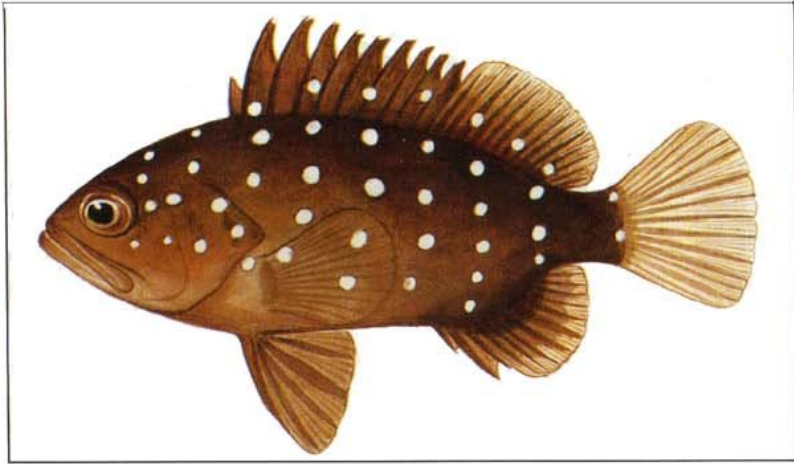


e) *Epinephelus mystacinus*, - 60 mm TL  
(P. Lastrico)



f) *Epinephelus nigrilus*, 600 mm SL (P.  
Lastrico)

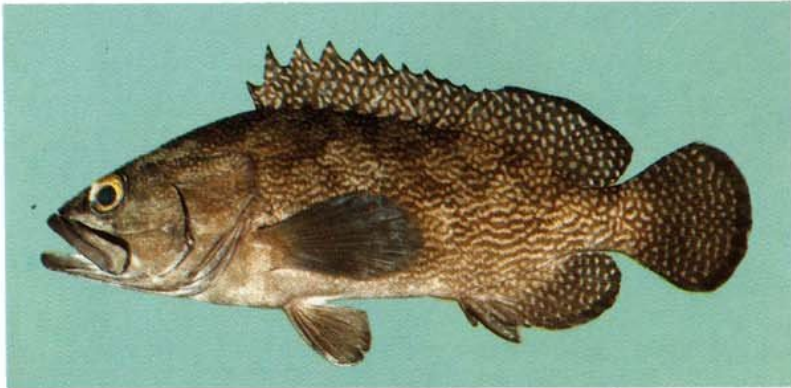
## PLATE XX



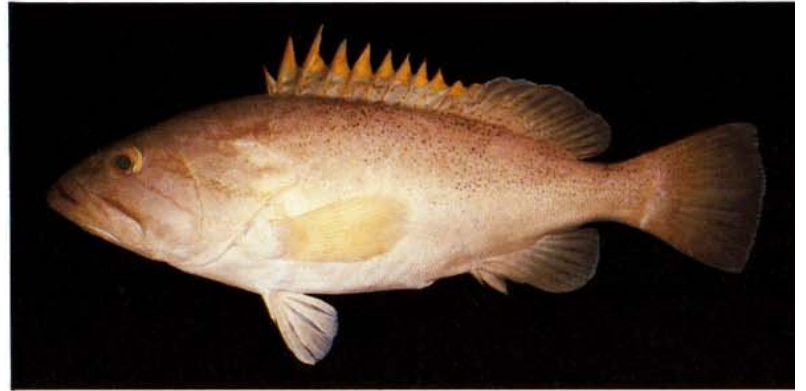
a) *Epinephelus niveatus*, - 60 mm TL  
(P. Lastrico)



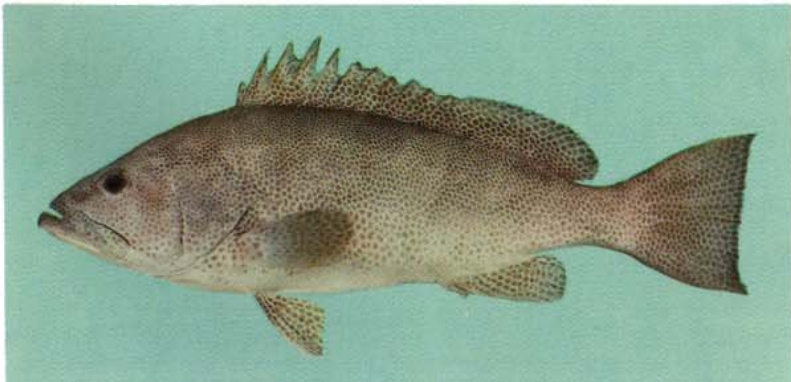
b) *Epinephelus octofasciatus*, 228 mm SL, Okinawa, Japan  
(J.E. Randall)



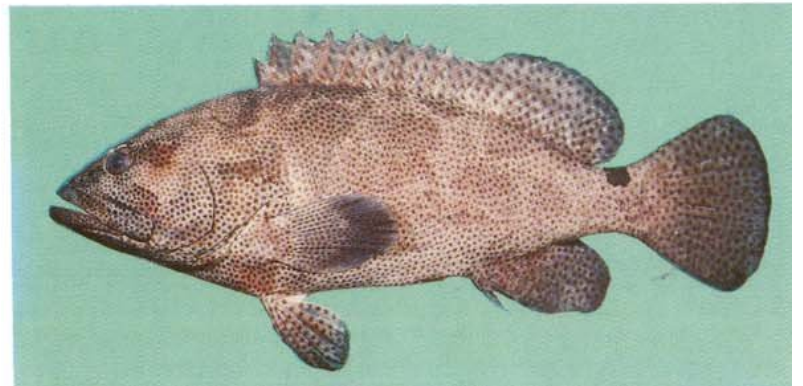
c) *Epinephelus ongus*, 219 mm SL, Okinawa, Japan  
(J.E. Randall)



d) *Epinephelus poecilnotus*, 520 mm SL, Maldive Islands  
(J.E. Randall)

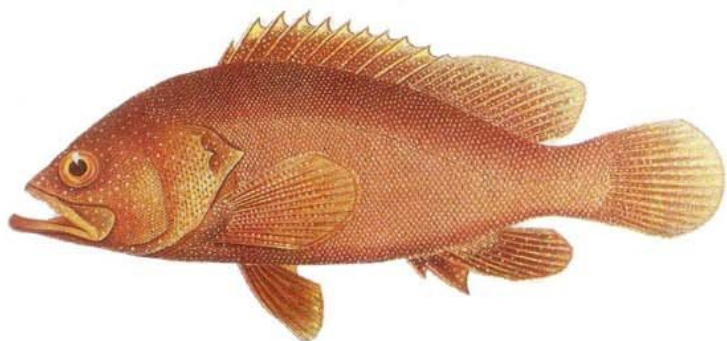


e) *Epinephelus polylepis*, 440 mm SL, Bahrain, Persian Gulf  
(J.E. Randall)

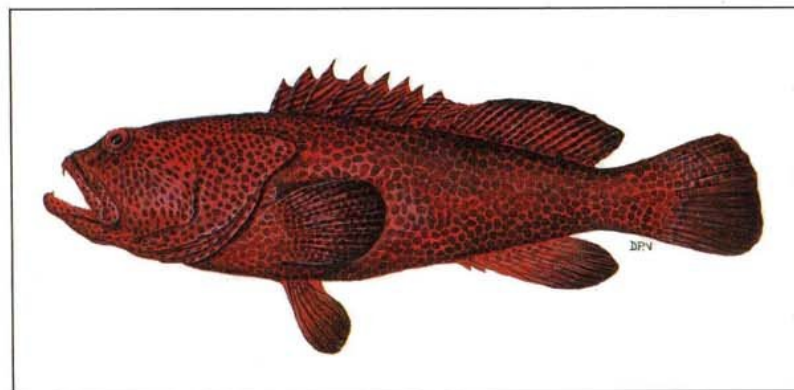


f) *Epinephelus polyphkadion*, 408 mm SL, Sudan, Red Sea  
(J.E. Randall)

## PLATE XXI



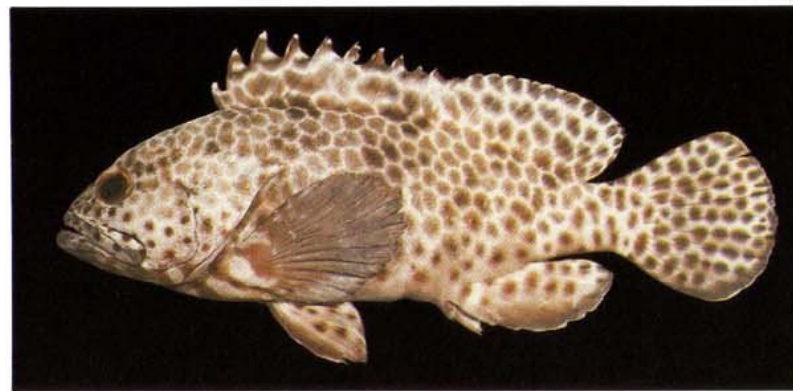
a) *Epinephelus polystigma*, 245 mm TL, Indonesia  
(Bleeker, 1873-76)



b) *Epinephelus posteli*, 610 mm SL, Mozambique  
(D.P. Voorvelt)



c) *Epinephelus quernus*, -550 mm TL, Midway, Hawaiian Islands  
(J.E. Randall)



d) *Epinephelus quoyanus*, 245 mm SL, Great Barrier Reef  
(J.E. Randall)



e) *Epinephelus radiatus*, 282 mm SL, Okinawa, Japan  
(J.E. Randall)



f) *Epinephelus retouti*, 286 mm SL, Taiwan  
(J.E. Randall)