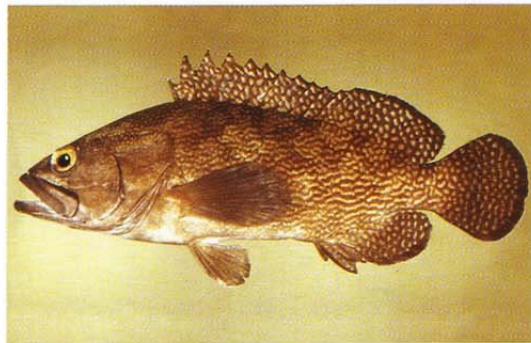


PLATE V



33. *Epinephelus morrhua* 22.4 cm SL, Naha, Okinawa, Ryukyu Islands



34. *Epinephelus ongus* 22.2 cm SL, Pohnpei, Caroline Islands



35. *Epinephelus polystigma* 8.8 cm SL, Ambon Bay, Indonesia



36. *Epinephelus quoyanus* 10 cm SL, Poka, Ambon, Indonesia



37. *Epinephelus radiatus* 29.5 cm SL, Naha, Okinawa, Ryukyu Islands



38. *Epinephelus retouti* 30.4 cm SL, Papeete, Tahiti



39. *Epinephelus rivulatus* 20.6 cm SL, Naha, Okinawa, Ryukyu Islands

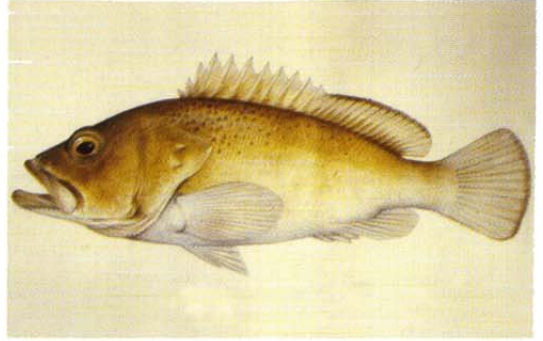


40. *Epinephelus sexfasciatus* 20.8 cm SL, Cebu, Philippines

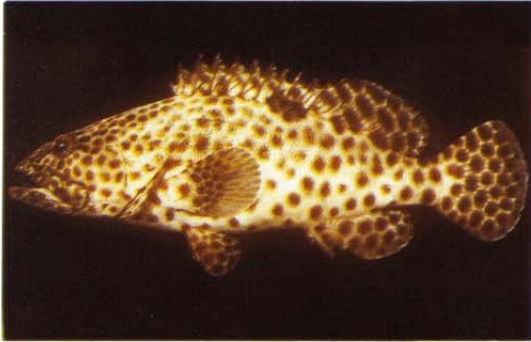
PLATE VI



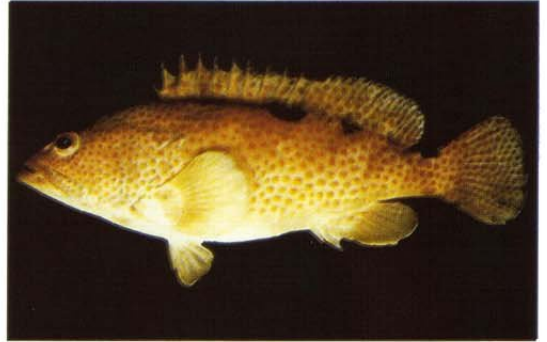
41. *Epinephelus spilotoceps* 18.8 cm SL, Kwajalein, Marshall Islands



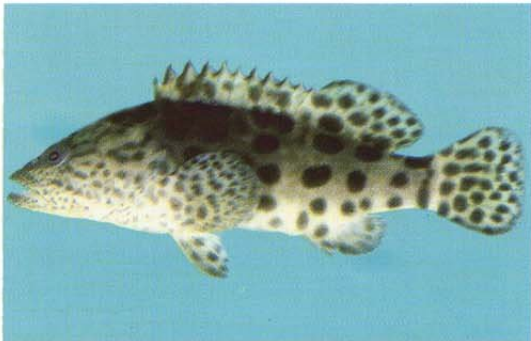
42. *Epinephelus stictus* Western Australia (painting by R. Swainston)



43. *Epinephelus tauvina* 19.2 cm SL, Enewetak, Marshall Islands



44. *Epinephelus trimaculatus* 27 cm SL, Keelung, Taiwan Province of China



45. *Epinephelus tukula* 8.8 cm SL, Kovalam, India



46. *Epinephelus undulatostratus* 26.4 cm SL, One Tree Island, Great Barrier Reef, Australia

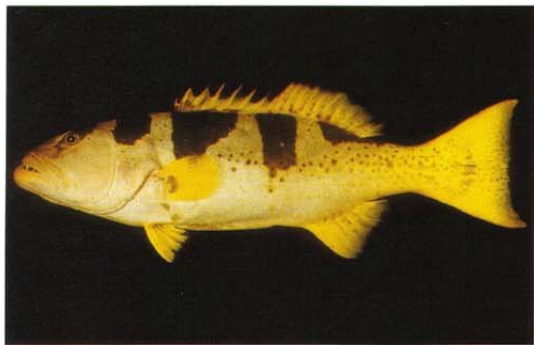


47. *Gracila albomarginata* 23 cm SL, Majuro, Marshall Islands

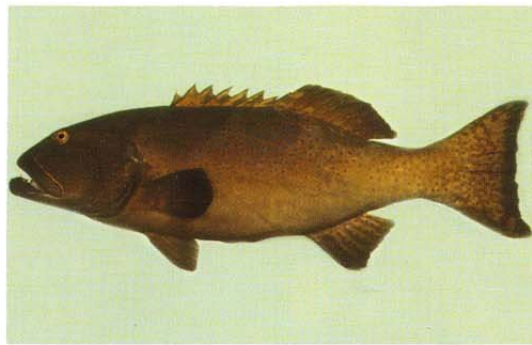


48. *Plectropomus areolatus* 35 cm SL, Enewetak, Marshall Islands

PLATE VII



49. *Plectropomus laevis* 59.7 cm SL, Enewetak, Marshall Islands



50. *Plectropomus laevis* 47.5 cm SL, Enewetak, Marshall Islands



51. *Plectropomus leopardus* 20.8 cm SL, Gill Ayer, Lombok, Indonesia



52. *Plectropomus maculatus* 40.2 cm SL



53. *Plectropomus oligacanthus* 24A cm SL, Alite Reef, Solomon Islands



54. *Saloptiapowellii* 38.8 cm SL, Guam



55. *Variola albimarginata* 22 cm SL, Mauritius



56. *Variola louti* 27.3 cm SL, Enewetak, Marshall Islands