

**battery type:** Lithium - Thionyl - Chloride  
**battery size:** IEC: 6AM6; ANSI: 1604LC; LA522; 9V-Block  
**chemical system:** Li-SOCl<sub>2</sub>

**Conditions**

**nominal voltage:** 10.8 V  
**open circuit voltage:** 10.8...11.2 V new battery  
 10.5...11.2 V after 1 year storage at 20°C

**capacity rated:** 1200 mAh all measurements at 20°C ambient  
 discharge at 1mA load; 24h/d  
 End Voltage (EV): 6.0V  
**minimum:** 700 mAh discharge at 10mA load; 24h/d  
 End Voltage (EV): 6.0V  
 500 mAh discharge at 50mA load; 24h/d  
 End Voltage (EV): 6.0V

**typical service output (new batteries)**

≥ 10 h load resistor: 180Ω; EV: 6.0V  
 discharge 24h/d  
 ≥ 18 h load resistor: 270Ω; EV: 6.0V  
 discharge 1h/d  
 ≥ 55 h load resistor: 620Ω; EV: 6.0V  
 discharge 2h/d

**max. continuous discharge current:** 50 mA

**max. peak discharge current:** 100 mA

**internal resistance:** ≤ 8 Ω at 1kHz, sine wave measurement  
 according to IEC 896-2

**shelf life:** 10 years under proper storage conditions

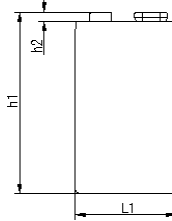
**leakage resistance over discharge:** no leakage 180ohms continuous discharge for 48h; ta: 20°C; RH: 60±15%  
**high temperature:** no leakage store 20days at ta: 60°C; RH:90±5%

**ambient temperature range:** - 40...60 °C

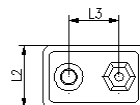
**recommended storage conditions:** -20...40 °C ambient temperature  
 45...75 % rel. humidity


**mechanical specifications**

**cell dimensions**  
 length L1: 26.5 -2 mm  
 length L2: 17.5 -2 mm  
 length L3: 12.7 ± 0.25 mm  
 height h1: 48.5 -2 mm  
 weight: 32 ± 2 g



**blister card dimensions:** 120 x 85 mm  
**weight (incl. batteries):** 45 ± 2 g



	<b>ANSMANN Specifications for model:</b>	<b>Ansmann Lithium Battery</b>
		<b>9V - E-Block 1pcs blister</b>
	data sheet no. / part no.	5021023
	author / date	Gramlich / 29.09.2010