

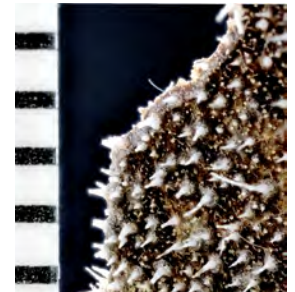
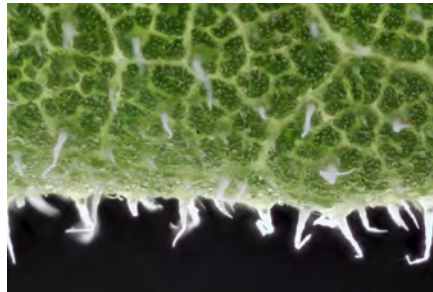
Soapstone Prairie Natural Area

Early July Plants



Prairie sunflower *Helianthus pumilus*

(Sunflower family) native. Leaves have short stiff hairs that make them feel like sandpaper. Abundant



Prickly poppy

Argemone spp.
(Poppy family) native
Leaves look like thistle,
but the flowers are
distinctly poppy-like.
Stem, leaves and buds
are very prickly.



bud



Blanket flower

Gaillardia aristata
(Sunflower family)
native. One of the
showiest plants of the
prairie. Very attractive
to butterflies.



Skunkbush *Rhus trilobata*

(Sumac family) native

Native americans used the wood for arrows and made a lemonade-like drink from the berries



Calcareous cryptantha

Oreocarya or *Cryptantha thyrsoiflora*

(Borage family) native
Borage is from Latin for bristly hair. The foliage is covered with stiff hairs.

Opposite leaf bahia

Picradeniopsis oppositifolia

(sunflower family) native

Smallish plant coming into bloom along roads and trails, fairly abundant



New Mexico needlegrass

Hesperostipa neomexicana (Grass family) native

Beautiful tall grass The seed has a long tail (awn) This tail is furry making the head look very white (most visible looking into the sun). The tail curls when dry.



These sheets are available online at: fcgov.com/anturalareas (then go to "native plants" and to the wildflowers in Natural Areas —> [wildflower handouts for Soapstone Prairie](#))