

# Soapstone Prairie Natural Area

## Mid August Plants



photoglass

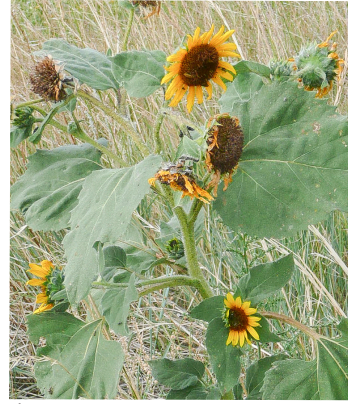


### Fetid marigold

*Dyssodia papposa*

native

strong odor deters grazers, except prairie dogs



photoglass

### Annual Suflower

*Helianthus annuus*

native

Native Americans used fiber from stems and made yellow dye from flowers



photoglass



### Bush Sunflower

*Helianthus pumilus*

native

Seeds a favorite food of native Americans; leaves feel like sand-paper



photoglass

### Jeweled blazingstar

*Mentzelia speciosa*  
(*Nuttallia*)

native

These are buds. They open only in the evening. There is also a white species here (*Mentzelia nuda*).



photoglass

### Hairy goldenaster

*Heterotheca villosa*

native

Smaller flowers and leaves than above and leaves hairy instead of rough



photoglass

### Needle-n-thread grass

*Hesperostipa comata*

native

One of the most common and beautiful grasses. These are the only seeds left on the plant. They have long tails like thread.



photoglass



**Prairie thistle**  
*Cirsium canescens*

native  
Large, coarse, weedy plants but they are not aggressive exotics



photoglass

**Dotted gayfeather**  
*Liatris punctata*

native  
One of the prettiest prairie plants; not often grazed or browsed



photoglass

**Rush skeletonplant**  
*Lygodesmia juncea*

native  
The stems are almost leafless-skeleton like; roots have been used for chewing gum



photoglass



**Winterfat**  
*Krascheninnikovia (Ceratoides) lanata*

native  
Plant resembles fringed sage, but look carefully— this has woolly tops

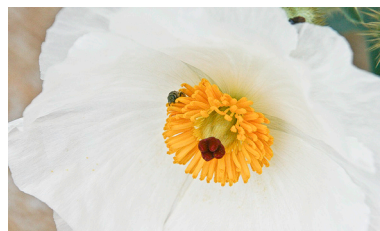


photoglass



**Wax current**  
*Ribes cereum*

native  
Native Americans ate berries fresh, dried and in pemmican, they also used stems for arrows



photoglass



**Rough pricklypoppy**  
*Argemone hispida*

native  
Brilliant white flowers with very bluish and prickly leaves pods and stems