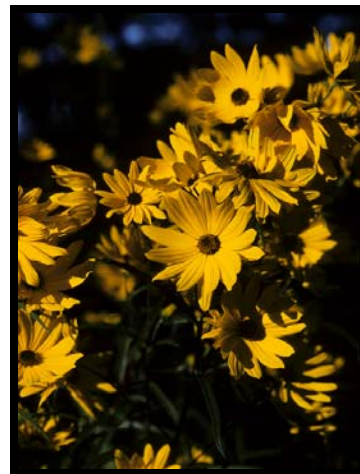


## BOTANY SECTION

Compiled by Richard E. Weaver, Jr., Ph.D., and Patti J. Anderson, Ph.D.

For this period, 167 specimens were submitted to the Botany Section for identification, and 1,418 were received from other sections for identification/name verification for a total of 1,585. In addition, 57 specimens were added to the herbarium, and 48 specimens of invasive species were prepared for the Division of Forestry's Forest Health Project. Some of the samples received for identification are discussed below:

*Helianthus simulans* E. E. Wats. (an endemic North American genus of 49 species, occurring throughout the United States and adjacent Canada, as well as in Baja California). Compositae (Asteraceae). **Muck sunflower**. It is unfortunate that such an attractive plant has such an unattractive common name. Growing to more than 2 m tall, this sunflower makes a showy and impressive specimen in the garden. In its best forms, the lanceolate leaves are leathery and dark green, somewhat reminiscent of those of the oleander (*Nerium oleander*). The flower heads, with bright yellow rays and usually a reddish-purple disk, are borne in profusion in October and November and vary from 7-10 cm across. Although it grows at least twice as tall and the leaves are broader and not revolute (turned under along the margins), it is often confused with the very common swamp sunflower (*H. angustifolius*). The origin of *H. simulans* is a mystery. Some authorities think it is native only in eastern Louisiana and has escaped from cultivation as far away as Central Florida. Others consider it to be native from Louisiana to Florida. Still others consider this plant a hybrid that arose in cultivation, with *H. angustifolius* as one parent, and perhaps *H. maximilianii* as the other. At any rate, it is a common garden plant here in Florida, where it is known as the "October daisy." It is an easy and very satisfactory plant in cultivation, but for greatest vigor and a compact habit, it is best grown in moist soil and full sun. (Alachua County; B2008-668; Paul Cohen, Florida Native Plant Society; 9 October 2008). (Cronquist 1980; Heiser 1969; <http://www.wildflower.org>).



*Helianthus simulans*  
Photograph courtesy of Sally Wasowski and  
the Lady Bird Johnson Wildflower Center

*Ipomoea cordatotriloba* Dennst. (a genus of 650 species from tropical and warm temperate areas in the Americas and Europe). Convolvulaceae. **Tievine, sharp-pod morning-glory**. This herbaceous vine has alternate leaves 4-9 cm long and 2-5 cm wide with cordate to sagittate bases and may be entire or lobed. The funnel-shaped flowers occur singly or in groups of three and range from pale lavender-pink to purple with a darker throat. The sepals of this species are subequal. The corolla is 3-8 cm long, which helps distinguish it from the smaller-flowered noxious weed, *I. triloba*, with a corolla not longer than 2.5



cm. This is a vine found mainly in the coastal plain from North Carolina to Florida and westward to Texas. In Florida, this native vine is found in disturbed sites where it blooms all year and provides nectar for butterflies. (Alachua County; B2008-626; Cheryl A. Jones; 25 September 2008). (Wunderlin and Hansen 2003; Miller and Miller 2005).

*Leucaena leucocephala* (Lam.) De Wit. (a genus of 22 species distributed from Texas to Peru).

Leguminosae (Fabaceae). **Lead tree**. This native of Mexico and Central America has a split



personality. On one hand, it is very useful in tropical and subtropical agriculture; on the other, it is a noxious weed. It is a member of the Mimosoideae subfamily of the legumes, in which the flowers are usually small, radially symmetrical and arranged in round, dense, headlike clusters as in *Mimosa* and *Acacia*. In this species, the heads are white, about 2-2.5 cm across, and arranged in small, open clusters. The fruit is a flattened pod, 12-20 cm long and about 2 cm wide, very similar to that of the mimosa or silk tree (*Albizia julibrissin*). Likewise, the fine-textured, bipinnately compound leaves are very similar to those of the mimosa, with numerous small leaflets usually less than 1.5 cm long. Several subspecies are recognized, and two have become naturalized in Florida: subsp. *leucocephala*, usually densely branched and shrublike, with hairy branchlets; and subsp. *glabrata*, usually a tree to 15 m tall, with hairless (glabrous) branchlets. Although subsp. *glabrata* is reputed to be less weedy, there is little research to corroborate this

characterization. Plants of this subspecies were formerly cultivated at the University of Florida, and seedlings escaped. Still, there is little chance that the lead tree will become invasive in northern Florida, since it usually freezes to the soil line during winter, except in particularly sheltered areas. In the tropics of both hemispheres, *Leucaena* is grown as forage, green manure, and living fence posts and to increase soil nitrogen. Because of its adaptability to poor soils and its rapid growth rate, the lead tree has been suggested for use as a biomass crop here in Florida. That use is no longer possible since the plant is now regulated by the state as a noxious weed. (Polk County; B2008-650; Albert L. Wright; 7 October 2008). (Mabberley 1997; [www.echotech.org](http://www.echotech.org)).

*Oplismenus burmannii* (Retz.) P. Beauv. (a genus of seven species widely distributed in tropical and subtropical areas, with one species native to the southeastern United States). Gramineae (Poaceae). **Burmans' basketgrass**. This prostrate annual grass is pantropical in distribution and was not known to occur in the United States until 2005. In that year, Mark Garland of the Division of Plant Industry found it in his lawn in Gainesville, and its identity was confirmed by an expert on grasses. Unfortunately, Mr. Garland did not publish his findings, so neither he nor DPI received credit for the discovery. Also in 2005, misidentified



specimens of the species were collected in the Kanapaha Botanical Garden in Gainesville, and herbarium records show that it had been collected in Orange County in 1996 and in Osceola County as early as 1944. All early collections were misidentified as being our native basket grass, *O. hirtellus*. The two species are easily confused because they are very similar in appearance. At present, *O. burmannii* is known from eight counties in Florida, from Alachua to Highlands.

Grasses of the genus *Oplismenus* are quite distinctive. They are plants of shady places and they bloom in the fall. The lanceolate or narrowly elliptic leaves are from 2-4 cm long and about one-quarter as wide. They are widely spaced on the creeping or prostrate stems (culms). The



flowering stems are more or less erect, with the spikelets arranged in short racemes at their tips. The tip of the lowermost bract (glume) of each spikelet is prolonged into a long, narrow projection known as an awn. The awns of *O. burmannii* are armed with tiny forward-pointing teeth, but these are absent in *O. hirtellus*. The teeth are not evident to the unaided eye, but their effects are evident to anyone walking through a patch of *O. burmannii*--these teeth enable the dry spikelets to attach to one's socks in great profusion. This plant is not yet on any list of noxious weeds, but it has the potential to become seriously invasive, and its

spread should be carefully monitored. (Hillsborough County; B2008-697; James R. Martin; 17 October 2008). (Davis *et al.* 2006; Mabberley 1997).

*Stephanotis floribunda* Brogn. (a genus of five species from the Old World tropics).

Asclepiadaceae. **Madagascar**

**Jasmine, Waxflower, Hawaiian Wedding Flower.**

This twining, evergreen shrub has stems up to 4 m long and opposite, coriaceous leaves to 15 cm long. Although this plant is not a true jasmine, its white to ivory flowers with fused corollas to 6 cm long are as delightfully fragrant as those of "real" jasmines. The fruit is a surprisingly large (to 10 cm), fleshy follicle. This drought tolerant species is a good choice for indoor



*Stephanotis floribunda*

Photographs courtesy of Top Tropicals

gardeners who sometimes forget to add water. Clusters of the lovely, fragrant flowers are often used as bridal bouquets. (Miami-Dade County; B2008-567; Olga Garcia; 3 September 2008). (Huxley 1992; <http://www.ces.ncsu.edu> ).

*Tinospora crispa* (L.) Hook. f. & Thomson (a genus of 32 Old World tropical species).

Menispermaceae. **Makabuhay, putarwali.** Native to India, China and other countries of

Southeast Asia, this climber grows up to 15 m long; has small, hard, wart-like lumps (tubercles) along its stems; and produces a bitter, milky latex. The leaves are broadly ovate with a cordate base. Inflorescences are 9-25 cm long with staminate and carpellate flowers on separate plants. Individual flowers have yellow-green corollas, surrounded by awl-shaped, fleshy bracts. The fruits are orange-colored drupes, about 2 cm long. This species has been used medicinally for a number of ailments, including fevers, jaundice, malaria and diabetes. Medical researchers have found the plant contains mixed results. (Pinellas County; B2008-633; Linda G. McRay; 29 September 2008). (Mabberley 1997; Noor and Ashcroft 1998; Sharma *et al.* 1993).



*Tinospora crispa*  
Photograph courtesy of Top Tropicals

## REFERENCES

- Cronquist, A. J. 1980. Vascular flora of the southeastern United States, Volume 1: Asteraceae. University of North Carolina Press. Chapel Hill, North Carolina. 261 p.
- Davis, S. B., W. S. Judd and K. D. Perkins. 2006. Notable collections: Florida. *Castanea* 71: 333-334.
- Heiser, C. B. 1969. The North American sunflowers (*Helianthus*). *Memoirs of the Torrey Botanical Club* 22: 1-218.
- Huxley, A. J. (editor). 1992. The new Royal Horticultural Society dictionary of gardening. 4 volumes. Macmillan Press. London, England. 3,240 p.
- Mabberley, D. J. 1997. The plant book, 2nd edition. Cambridge University Press. Cambridge, England. 858 p.
- Miller, J. H. and K. V. Miller. 2005. Forest plants of the southeast and their wildlife uses. University of Georgia Press. Athens, Georgia. 454 p.
- Noor, Hamdan and S. J. H. Ashcroft. 1998. Insulinotropic activity of *Tinospora crispa* extract: effect on  $\beta$ -cell  $Ca^{2+}$  handling. *Phytotherapy Research* 12: 98-102.
- Sharma, B. D., N. P. Balakrishnan, R. R. Rao, and P. K. Hajra. 1993. Flora of India: Volume 1. Botanical Survey of India. Calcutta, India. 467 p.
- Wunderlin, R. P. and B. F. Hansen. 2003. Guide to the vascular plants of Florida, 2nd edition. University Press of Florida. Gainesville, Florida. 787 p.

Unless otherwise noted, all photographs are generously provided by the Institute for Systematic Botany, Atlas of Florida Vascular Plants: <http://www.plantatlas.usf.edu>.

## ENTOMOLOGY SECTION

### Compiled by Susan E. Halbert, Ph. D.

For the month of September, there were 956 samples, consisting of 51,496+ specimens. In October, there were 927 samples, consisting of 28,817+ specimens. Some of the samples are listed below:

#### ORNAMENTALS, WOODY PLANTS, AND PALMS:

*Aiphanes caryotifolia* (coyure palm, ruffle palm, spine palm) -- *Raoiella indica* Hirst, **red palm mite**: An infestation was found at the Deerfield Beach Arboretum in Deerfield Beach (Broward County; E2008-5591; Jennifer J. Beard, Queensland Museum, Ronald Ochoa, USDA/ARS/SEL, and W.C. 'Cal' Welbourn; 21 August 2008). NEW DPI HOST RECORD.

*Eucalyptus* sp. (eucalyptus) -- *Leptocybe invasa* Fisher & LaSalle, **blue gum chalcid wasp**: A moderate infestation was found on a plant at a residence in Lauderhill (Broward County; E2008-4347; William A. Thiel, USDA/APHIS/PPQ; 2 July 2008). NEW USA CONTINENTAL RECORD.

This species, found on *Eucalyptus*, is an Australian gall wasp new to Florida and the United States. This gall-forming wasp was described in 2004. Within the past decade, it has become established in the Mediterranean basin, several African countries, India, Southeast Asia and Brazil. As *Eucalyptus* is used as both an ornamental and commercial tree in Florida, *L.*



Left: *Leptocybe invasa* adult female wasp. Right: Galls on Eucalyptus from Florida  
Photograph courtesy of P.E. Skelley, DPI

*invasa* has the potential of becoming a problematic pest. The wasp forms galls on new growth of young trees and seedlings, stunting growth. When large concentrations of these wasps are present, all new growth is susceptible to damage. The impact on adult trees is unknown (James R. 'Jim' Wiley).

*Glycosmis pentaphylla* (Jamaican mandarin-orange) -- new species in the family Coccidae, **croton scale**: A slight infestation was found on a plant at the Fruit and Spice Park in Homestead (Miami-Dade County; E2008-7254; Richard F. Lee, USDA/ARS, and Susan E. Halbert; 27 October 2008). NEW DPI HOST RECORD.

*Ravenia spectabilis* (limonia, pink ravenia) -- *Diaphorina citri* Kuwayama, **Asian citrus psyllid**: A slight infestation, including immatures, was found at Fairchild Tropical Botanical Garden in Coral Gables (Miami-Dade County; E2008-7280; Richard F. Lee, USDA/ARS, and Susan E. Halbert; 28 October 2008). NEW DPI HOST RECORD.

*Senna pendula* (Christmas cassia, velamuerto) -- *Myloccerus undecimpustulatus undatus* Marshall, **a weevil**: A severe infestation was found on three of five plants at a nursery in Bradenton (Manatee County; E2008-7064; James E. 'Eddie' Anderson; 21 October 2008). NEW DPI HOST RECORD.

*Tabebuia heterophylla* (white cedar, roble blanco) -- *Holopothrips tabebuia* Cabrera & Segarra, **trumpet tree thrips**: A slight infestation was found at a nursery in Fort Pierce (St. Lucie County; E2008-5891; Dagne A. Vasquez; 3 September 2008). NEW DPI COUNTY RECORD.

*Viburnum odoratissimum* (sweet arrowwood, sweet viburnum) -- *Thrips palmi* Karny, **melon thrips**: A moderate infestation was found on plants at a discount store in Clermont (Lake County; E2008-6710; Lorrie R. Rigby; 3 October 2008). NEW DPI HOST RECORD.

#### ORNAMENTALS, FOLIAGE PLANTS:

*Acalypha wilkesiana* (Jacob-coat, copperleaf, beefsteak plant) -- new species in the family Coccidae, **croton scale**: a moderate to severe infestation was found at a nursery in Vero Beach (Indian River County; E2008-7180; Mario Perez; 27 October 2008). NEW DPI HOST RECORD.

*Acorus gramineus* (grassy-leaved sweetflag) -- *Pseudaulacaspis cockerelli* (Cooley), **magnolia white scale**: A severe infestation was found at a nursery in Gainesville (Alachua County; E2008-6203; Cheryl A. Jones, Christine A. Zamora, Sol F. Looker, and W. Wayne Bailey; 17 September 2008). NEW DPI HOST RECORD.

*Alocasia* sp. (taro) -- new species in the family Coccidae, **croton scale**: A severe infestation on plants was found at a nursery in Miami (Miami-Dade County; E2008-6205; Ana L. Ochoa and Rosamaria M. Quiñones; 16 September 2008). NEW DPI HOST RECORD.

*Ceratophyllum* sp. (hornwort) -- *Parapoinx allionealis* (Walker), **watermilfoil leafcutter**: A severe infestation on more than 1,000 plants was found at a nursery in Plant City (Hillsborough County; E2008-6509, 6510; Joseph S. Hawk; 29 September 2008). NEW DPI HOST RECORD.

*Codiaeum variegatum* (croton) -- new species in the family Coccidae, **croton scale**: A severe infestation was found at a nursery in Brooksville (Hernando County; E2008-6272; Stephen R. Jenner; 19 September 2008). NEW DPI COUNTY RECORD.

*Cycas* sp. (cycad) -- *Mylocerus undecimpustulatus undatus* Marshall, **a weevil**: A slight infestation was found at a nursery in Miami (Miami-Dade County; E2008-5867; Stephen P. Beidler; 28 August 2008). NEW DPI HOST RECORD.

#### ORNAMENTALS, FLOWERING PLANTS:

*Justicia brandegeana* (shrimp plant) -- Pyralidae, **a snout moth**: A moderate infestation was found at a nursery in Gainesville (Alachua County; E2008-6222; Cheryl A. Jones, Christine A. Zamora, Sol F. Looker, and W. Wayne Bailey; 17 September 2008). NEW DPI HOST RECORD.

*Passiflora suberosa* (corksystem passion flower) -- *Phyllocoptruta* sp., **an eriophyid mite**: A slight infestation was found at a residence in Cooper City (Broward County; E2008-6972; William A Thiel, USDA/APHIS/PPQ; 14 October 2008). NEW DPI HOST RECORD.

*Zinnia* sp. (zinnia) -- *Mylocerus undecimpustulatus undatus* Marshall, **a weevil**: A moderate infestation was found at a residence in Indialantic (Brevard County; E2008-5783; Mary C. Sellers; 17 August 2008). NEW DPI HOST RECORD.

#### FOREST AND SHADE TREES:

- Acer palmatum* (Japanese maple) -- *Japanus hyalinus* (Osborn), **a leafhopper**: A moderate infestation was found at a nursery in Milton (Santa Rosa County; E2008-5567; W.L. 'Robbie' Robinson; 20 August 2008). NEW DPI COUNTY RECORD.
- Celtis laevigata* (hackberry, sugarberry) -- *Shivaphis celti* Das, **Asian woolly hackberry aphid**: An infestation was found on four plants on the campus of Florida State University in Tallahassee (Leon County; E2008-6335; Michael A. Bentley; 22 September 2008). NEW DPI COUNTY RECORD.
- Euodia elleryana* (corkwood) -- *Paratachardina pseudolobata* Kondo & Gullan, **lobate lac scale**: A moderate infestation was found on a specimen plant at the Fairchild Tropical Botanical Garden in Coral Gables (Miami-Dade County; E2008-7288; Richard F. Lee, USDA/ARS, and Susan E. Halbert; 28 October 2008). NEW DPI HOST RECORD. This scale was previously called *Paratachardina lobata* (Dr. Greg S. Hodges).
- Hura crepitans* (sandbox tree) -- *Pseudaonidia trilobitiformis* (Green), **trilobe scale**: A slight infestation was found on a plant at a residence in Key West (Monroe County; E2008-5933; William A. Thiel, USDA/APHIS/PPQ; 2 September 2008). NEW DPI HOST RECORD.
- Magnolia grandiflora* (southern magnolia) -- *Leptoglossus fulvicornis* (Westwood), **a leaffooted bug**: A moderate infestation was found on a tree at a residence in Naples (Collier County; E2008-6268; Scott D. Krueger; 16 September 2008). NEW DPI COUNTY RECORD.
- Salix* sp. (willow) -- *Scirtothrips dorsalis* Hood, **chili thrips**: A slight infestation was found on six plants at a discount store in Clermont (Lake County; E2008-6707; Lorrie R. Rigby; 3 October 2008). NEW DPI HOST RECORD.

#### FOOD AND CROP PLANTS:

- Averrhoa carambola* (carambola, starfruit, blimbing) -- new species in the family Coccidae, **croton scale**: An infestation was found at a residence in Homestead (Miami-Dade County; E2008-6750; homeowner; 8 October 2008). NEW DPI HOST RECORD.
- Cucumis sativus* (cucumber, garden cucumber) -- *Thrips palmi* Karny, **melon thrips**: An infestation was found at an Agricultural Experiment Station (AES) located on the St. Croix Campus of the University of the Virgin Islands (E2008-6172; Jozef L. W. Keularts, Cooperative Extension Service, University of the Virgin Islands; 19 June 2008). NEW US VIRGIN ISLANDS RECORD.
- Spondias purpurea* (Spanish plum, purple mombin) -- new species in the family Coccidae, **croton scale**: A severe infestation was found at a nursery in Miami (Miami-Dade County; E2008-6492; Stephen P. Beidler; 26 September 2008). NEW DPI HOST RECORD.
- Zea mays* (corn, maize, Indian corn, elote) -- *Duplachionaspis divergens* Green, **an armored scale** and *Antonina graminis* nr. (Maskell), **a mealybug**: Moderate infestations were found on roots of a plant at a residence in Miami (Miami-Dade County; E2008-6010; Olga Garcia; 6 September 2008). Both species NEW DPI HOST RECORDS.

#### CITRUS:

- Citrus aurantium* (sour orange) -- *Diptilomiopus assamica* Keifer, **an eriophyid mite**: A slight infestation was found on a plant at John Williams Park in Hollywood (Broward County; E2008-6354; Karolynne M. Griffiths, USDA/APHIS/PPQ/CAPS, and Michael E. Meadows; 23 September 2008). NEW USA CONTINENTAL RECORD. This species was reported previously from India and Australia on citrus. This mite does not seem to be an important pest, due to very low numbers, and is unlikely to be a pest on plants other than citrus. Further

investigation would be needed to determine how widespread this species has become (Dr. W.C. 'Cal' Welbourn).

### WEEDS AND GRASSES:

*Alysicarpus vaginalis* (white moneywort) -- *Microparsus olivei* (Smith & Tuatay), **an aphid**: A moderate infestation was found in the University of Florida, Natural Area Teaching Laboratory in Gainesville (Alachua County; E2008-6658; Kevyn J. Juneau, Student, University of Florida; 2 October 2008). NEW DPI HOST RECORD.

*Antigonon leptopus* (coral vine, queen's jewels) -- *Mylocerus undecimpustulatus undatus* Marshall, **a weevil**: A slight infestation was found on a plant at a residence in Miami (Miami-Dade County; E2008-7270; Olga Garcia; 28 October 2008). NEW DPI HOST RECORD.

*Dalbergia ecastophyllum* (coinvine) -- *Mylocerus undecimpustulatus undatus* Marshall, **a weevil**: A severe infestation was found at Grandview Park in St. Petersburg (Pinellas County; E2008-6742; Deborah L. Simmons; 3 October 2008). NEW DPI HOST RECORD.

*Galactia elliotii* (Elliott's milkpea) -- possible *Tetra* sp., **an eriophyid mite**: A moderate infestation was found at Branchton Park in Tampa (Hillsborough County; E2008-6319; Jason B. Sharp; 16 September 2008). NEW DPI HOST RECORD. This probably is a new species (Dr. W.C. 'Cal' Welbourn).

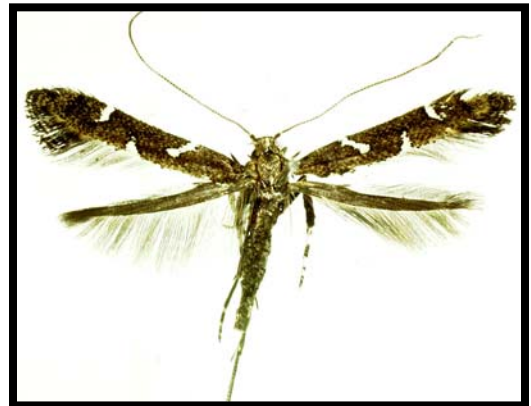
*Nandina domestica* (heavenly bamboo, nandina) -- *Scirtothrips dorsalis* Hood, **chili thrips**: A moderate infestation was found at a nursery in Mount Dora (Lake County; E2008-6793; Mary C. Sellers; 10 October 2008). NEW DPI HOST RECORD.

*Sapium sebiferum* (Chinese tallow tree, popcorn tree) -- *Caloptilia* sp., **a leafminer**: A moderate infestation was found on five trees at Branchton Park in Tampa (Hillsborough County; E2008-6291; Jason B. Sharp; 16 September 2008). NEW USA CONTINENTAL RECORD. More specimens were collected from the FDACS/DPI compound in Gainesville (Alachua County; E2008-6506; James A. Lollis and Susan A. Wineriter Wright, USDA/ARS, Gainesville; 20 September 2008). NEW DPI COUNTY RECORD. The new leafminers make very distinctive leafrolls and are doing extensive damage to Chinese tallow trees, with some trees having as many as half their leaves damaged. The species might not yet be described (Dr. John B. Heppner).

*Sida cordifolia* (llima) -- *Mylocerus undecimpustulatus undatus* Marshall, **a weevil**: A slight infestation was found on a plant in an empty lot in Miami (Miami-Dade County; E2008-7215; Olga Garcia; 24 October 2008). NEW DPI HOST RECORD.

*Solanum diphyllum* (twoleaf nightshade) -- *Mylocerus undecimpustulatus undatus* Marshall, **a weevil**: A moderate infestation was found at a residence in St. Petersburg (Pinellas County; E2008-7143; Linda G. McRay; 23 October 2008). NEW DPI HOST RECORD.

*Thalia geniculata* (bent alligatorflag, fireflag) -- *Ischnodemus sallei* (Signoret), **a seed bug**: A moderate infestation was found on plants in the University of Florida, Natural Area Teaching Laboratory (Alachua County; E2008-7240; Patti J. Anderson; 30 October 2008). NEW DPI COUNTY RECORD.



*Caloptilia* sp.  
Photograph courtesy of J. B. Heppner, DPI



*Turnera ulmifolia* (yellow alder, ramgoat dashalong, buttercup) -- *Myllocerus undecimpustulatus undatus* Marshall, **a weevil**: A slight infestation was found on a plant at a residence in St. Petersburg (Pinellas County; E2008-7145; Linda G. McRay; 23 October 2008). NEW DPI HOST RECORD.

#### NATIVE AND NATURALIZED PLANTS:

*Ardisia escallonioides* (marlberry) -- *Asaphocrita* sp., **a moth**: Specimens were reared from two infested plants found at the Captain Forster's Hammock Preserve in Orchid (Indian River County; E2008-4417; Kenneth L. Hibbard; 1 May 2008). NEW DPI HOST RECORD. This is an undescribed species (Dr. John B. Heppner).

*Gymnanthes lucida* (crabwood) -- new species in the family Coccidae, **croton scale**: A moderate infestation was found at a nursery in Homestead (Miami-Dade County; E2008-7098; Juan M. Menendez Torres; 22 October 2008). NEW DPI HOST RECORD.

*Hamelia patens* (firebush, scarletbush) -- new species in the family Coccidae, **croton scale**: A severe infestation was found at a discount store in Clermont (Lake County; E2008-6712; Lorrie R. Rigby; 3 October 2008). NEW DPI COUNTY RECORD.

*Litsea aestivalis* (pondspice, pondbush) -- *Xyleborus glabratus* Eichhoff, **ambrosia beetle**: Specimens were collected on several trees on city property in St. Augustine (St. John's County; E2008-6837; Albert E. 'Bud' Mayfield, Division of Forestry; 29 August 2008). NEW DPI HOST RECORD FOR A FLORIDA ENDANGERED PLANT.

*Myrcianthes fragrans* (Simpson's stopper, nakedwood, twinberry) -- new species in the family Coccidae, **croton scale**: A slight infestation was found at a nursery in Homestead (Miami-Dade County; E2008-6403; Lynn D. Howerton; 22 September 2008). NEW DPI HOST RECORD.

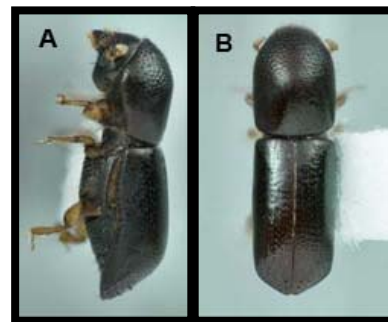
*Rapanea punctata* (myrsine, colicwood, Florida rapanea) -- new species in the family Coccidae, **croton scale**: A slight infestation was found on a plant at a nursery in Homestead (Miami-Dade County; E2008-6409; Lynn D. Howerton; 22 September 2008). NEW DPI HOST RECORD.

*Sophora tomentosa* (yellow necklace pod, silverbush) -- *Myllocerus undecimpustulatus undatus* Marshall, **a weevil**: A slight infestation was found on plants at a nursery in Naples (Collier County; E2008-6573; Scott D. Krueger; 29 September 2008). NEW DPI HOST RECORD.

#### ARTHROPOD DETECTION:

*Boreioglycaspis melaleucae* Moore, **melaleuca psyllid**: A specimen was collected in a suction trap in a citrus grove near Arcadia (De Soto County; E2008-3042; grove employee; 13 May 2008). NEW DPI COUNTY RECORD.

*Diaditus pictipes* Champion, **an assassin bug**: A specimen was found on a roadside in Monticello (Jefferson County; E2008-7402; Michael A. Bentley; 9 October 2008). NEW DPI COUNTY RECORD.



*Xyleborus glabratus* female.  
A) lateral view, B) dorsal view.  
Photograph courtesy of M.C. Thomas, DPI

*Haylomorpha halys* Stål, **brown marmorated stinkbug**: Specimens were found at a residence in Plant City (Hillsborough County; E2008-7236; Douglas A. Restom Gaskill and Julieta Brambila, both USDA/APHIS/PPQ; 28 September 2008). This infestation evidently was brought into the state with household possessions moved from New Jersey. No additional specimens have been collected outside the residence. The only previous record of this species in Florida was a single specimen collected alive in a Jackson trap at Port Everglades in March 2006 (E2006-1900). Surveys revealed no subsequent occurrence of this pest in Port Everglades. The brown marmorated stinkbug is a serious pest of cultivated plants and a significant urban nuisance (Dr. Susan E. Halbert).



*Haylomorpha halys*  
Photograph courtesy of Bugwood Images, University of Georgia,  
contributed by David R. Lance, USDA/APHIS/PPQ

*Trachyderes mandibularis* Dupont, **a cerambycid**

**beetle**: A specimen was found on a citrus tree at a nursery in Miami (Miami-Dade County; E2008-5700; Jose L. Llanos Ruiz; 27 August 2008). NEW DPI COUNTY RECORD. Although this specimen was found on citrus, the species does not infest living citrus (Dr. Michael C. Thomas).

*Trigoniulus corallinus* (Gervais), **a centipede**: A specimen was found at the McGuire Center for Lepidoptera and Biodiversity in Gainesville (Alachua County; E2008-4751; David C. Ziesk and Louis A. Somma; 18 July 2008). NEW DPI COUNTY RECORD.

*Xanthaciura chrysur* (Thomson), **a fruit fly**: A specimen was caught in a Multi-lure trap in an avocado tree at a residence in Orlando (Orange County; E2008-6169; Nermaret Canales-Guardiola, USDA/APHIS/PPQ; 11 September 2008). NEW DPI COUNTY RECORD. The host is unknown, but it probably is *Mikania scandens* (Dr. Gary J. Steck).

**NEMATODOLOGY SECTION**

**Compiled by Janete A. Brito, Ph.D., and Renato N. Inserra, Ph.D.**

A total of 2,318 samples (2,014 for morphological and 304 for molecular identifications) were processed in September-October 2008. Details are shown below:

<p><b>Certification and Regulatory Samples:</b>                  Multi-state Certification for National and International Export ..... 1450                  California Certification ..... 369                  Pre-movement (Citrus Nursery Certification) ..... 59                  Site or Pit Approval (Citrus Nursery and Other Certifications) ..... 37</p>	<p><b>Other Samples:</b>                  Identifications (invertebrate) ..... 1                  Plant Problems ..... 26                  Intrastate Survey, Random ..... 72  <b>Molecular Identifications*</b> ..... 304</p> <p><small>*The majority of these analyses involved root-knot nematode species</small></p>
------------------------------------------------------------------------------------------------------------------------------------------------------------------------------------------------------------------------------------------------------------------------------------------------------------------------------------------------------------------------------------	------------------------------------------------------------------------------------------------------------------------------------------------------------------------------------------------------------------------------------------------------------------------------------------------------------------------------------------

**Nematodes of Special Interest**

Nematodes of special interest detected and/or identified in September-October 2008:

*Morus alba* (white mulberry) – *Meloidogyne mayaguensis* Rammah and Hirschmann, 1988, the **guava root-knot nematode** was found infecting the roots of this deciduous tree (Collier County; N08-1322; Scott D. Krueger; 10 October 2008). Roots were severely galled by this nematode. The guava root-knot nematode is an important pathogen of several agronomic and horticultural species as well as weed species associated with crops in Florida. This is the first occurrence of *M. mayaguensis* infection on white mulberry. NEW HOST RECORD.



*Morus alba*. Photograph courtesy of M.A. Beckman and J.A. Brito, DPI.

**COLLECTORS SUBMITTING FIVE OR MORE SAMPLES THAT WERE PROCESSED FOR NEMATOLOGICAL ANALYSIS DURING SEPTEMBER-OCTOBER 2008**

Anderson, James L.	31	Ochoa, Ana L.	168
Bailey, Wayne W.	26	Pate, Jo Ann	46
Burgos, Frank A.	43	Qiao, Ping	94
Edenfield, Carrie S.	101	Spriggs, Charles L.	241
Krueger, Scott D.	200		

## PLANT PATHOLOGY

### Compiled by: Robert M. Leahy

For this period, the Plant Pathology Section received and processed 2,230 specimens. These included 514 pathology, 458 citrus canker, 1,241 citrus greening, five bee, six soil and six miscellaneous samples.

#### ORNAMENTALS, WOODY PLANTS AND PALMS:

*Kalmia latifolia* (mountain laurel) – *Phytophthora cinnamomi*, **root rot**: Collected at Trillium Gardens in Leon County (13 October 2008, Michael A. Bentley, P2008-19815). NEW HOST RECORD.

*Rhodomyrtus tomentosa* (downy myrtle) – *Puccinia psidii*, **rust**: Collected at a nursery in Orange County (23 October 2008, Leslie J. Wilber, P2008-19498). NEW HOST RECORD.

*Sabal palmetto* (cabbage palm) – *Phytoplasma* sp., **Phytoplasma disease**: Collected on a roadside in Desoto County (4 August 2008, Karen L. Etchells and Douglas A. Restom Gaskill, USDA/CAPS, P2008-16724). NEW HOST RECORD.

#### ORNAMENTALS, FOLIAGE PLANTS:

*Christia obcordata* (striped butterfly leaf, christia) – *Bipolaris* sp., **leaf spot**: Collected at a nursery in Hendry County (10 October 2008, JoAnn Pate, P2008-19022). NEW HOST RECORD.

*Crassula* sp. (jade plant) – *Cercospora* sp., **leaf spot**: Collected at a nursery in Alachua County (2 October 2008, Cheryl A. Jones, P2008-18663).

*Ctenanthe oppenheimiana* (never-never plant) – *Exserohilum rostratum*, **leaf spot**: Collected at a nursery in Pinellas County (6 October 2008, Thomas S. Lastrapes; P2008-18926). NEW HOST RECORD.

*Dracaena sanderiana* (lucky bamboo) – *Colletotrichum dracaenophilum*, **lesions**: Collected at an Asian market in Palm Beach County (3 September 2008, Karolynne M. Griffiths, USDA/APHIS/PPQ/CAPS, P2008-17756).

*Dracaena sanderiana* (lucky bamboo) – *Colletotrichum dracaenophilum*, **lesions**: Collected at a nursery in Broward County (4 September 2008, Karolynne M. Griffiths, USDA/APHIS/PPQ/CAPS and Michael E. Meadows, DPI/CAPS; P2008-17755).

#### ORNAMENTALS, FLOWERING PLANTS:

*Brugmansia* sp. (Angel's trumpet) – *Agrobacterium tumefaciens*, **crown gall**: Collected at a dooryard in Miami-Dade County (25 September 2008, Olga Garcia, P2008-18497). NEW HOST RECORD.

*Ipomoea hederifolia* (scarlet creeper) – *Cercospora ipomoeae*, **leaf spot**: Collected at FDACS-DPI, Alachua County (29 September 2008, Romy Krueger, P2008-18448). NEW HOST RECORD.

*Stokesia laevis* (Stokes' aster) – Tomato Spotted Wilt Tospovirus, **virus**: Collected at a nursery in Alachua County (17 September 2008, Wayne W. Bailey, P2008-18035). NEW HOST RECORD.

*Viola x wittrockiana* (pansy) – *Thielaviopsis basicola*, **black root rot**: Collected at a nursery in Duval County (8 October 2007, Flewellyn W. Podris, P2008-18891).

*Viola x wittrockiana* (pansy) – *Thielaviopsis basicola*, **black root rot**: Collected at a nursery in Duval County (20 October 2008, nursery employee, P2008-19213).

**FOOD AND CROPS:**

*Ocimum* sp. (basil) – *Peronospora* sp., **downy mildew**: Collected at a nursery in Sarasota County (7 October 2008, Karen L. Etchells, P2008-18880).

*Sorghum* sp. (sorghum) – *Sphacelia sorghi*, **ergot**: Collected at a grove in Indian River County (4 September 2008, Dagne A. Vazquez, P2008-17696).