



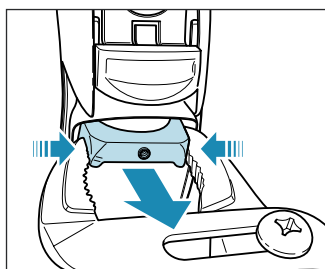
Philips Domestic Appliances and Personal Care

# Service Manual

SAP coding HQ 8445

**HINTS FOR REPAIR:**

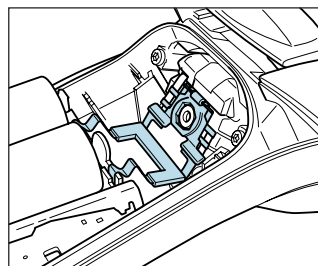
- Remove shaving unit, to prevent damages during repairing.
- Remove screws A1 (2x).
- Take cover from housing (trimmer must be opened).
- Remove bracket large (17).



- The PCB-board can now be removed out of the housing.
- Remove the connecting strip from the motor by dis soldering.
- Remove screws B1 (2 x), now the motor and hairchamber can be removed out of the housing.
- Detach the motor springs (14) from the gearwheel unit with a small screwdriver.

**ASSEMBLY:**

- Think by assembly on the hooks from the connecting strip assy.

**GENERAL:**

- Main shaver
- Constant motor voltage
- Electronic push on/off
- Washable

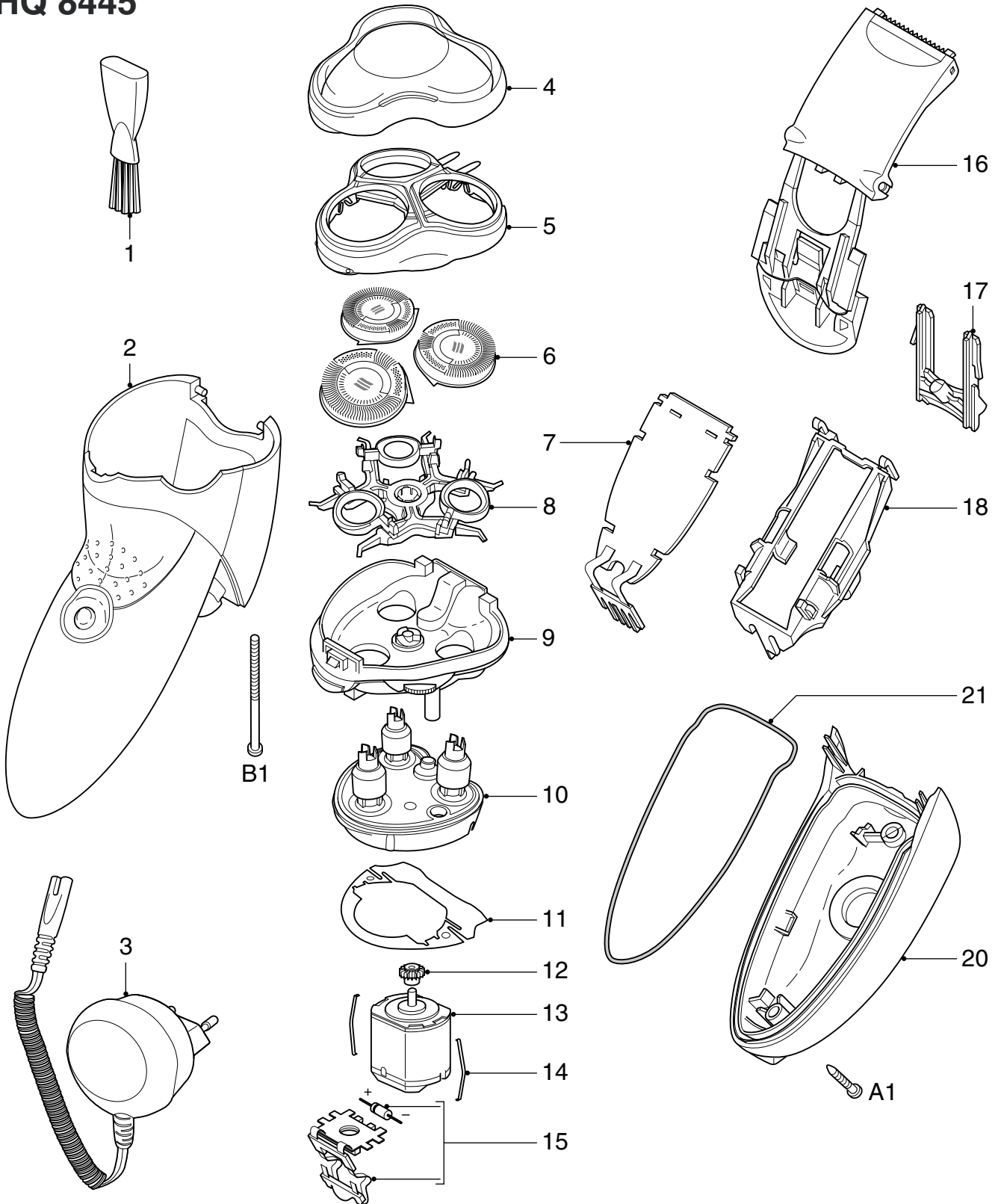
**TECHNICAL DATA:**

Voltage	: 100 - 240 Volt	50 - 60 Hz
Motor voltage	: 6,2 Volt	
Speed of cutters	: > 2100 r.p.m.	
Shaving heads	: HQ8 - 4222 036 05820	

This product meets the requirements regarding interference suppression on radio and TV.

After the product has been repaired, it should function properly and has to meet the safety requirements as officially laid down at this moment.

# HQ 8445



1	4222 036 05770	cleaning brush	12	4822 522 10763	pinion
2	4222 036 05780	housing	13	4822 361 11177	motor
3	4222 036 05790	power plug EUR	14	4822 492 71735	motor spring
	4222 036 04010	power plug CAN/ROW	15	4222 036 05860	connecting strip assy
	4222 036 07250	power plug GBR/ZAF	16	4222 036 05870	trimmer assy
4	4222 036 05800	protecting cap	17	4222 036 05880	bracket large
5	4222 036 05810	bracket	18	4222 036 05890	spacer AA
6	4222 036 05820	HQ8 shaving heads	20	4222 036 05900	cover
7	4222 036 05830	mains	21	4222 036 05910	rubber seal
8	4222 036 05840	holder assy	A	4222 036 05920	screw J1-6
9	4222 036 05850	hair chamber	B	4222 036 05930	screw 1ADU
10	4222 036 05410	driving unit		4222 036 05940	pouch
11	4822 466 12233	dust seal		4222 036 06370	pouch Can/Row