

## 研究資料 (Research material)

# Checklist of longicorn coleoptera of Sri Lanka (1) Vesperidae and Cerambycidae excluding Lamiinae

Hiroshi MAKIHARA<sup>1)\*</sup>, Amani MANNAKKARA<sup>2)</sup>,  
Toshihiko FUJIMURA<sup>3)</sup> and Akio OHTAKE<sup>4)</sup>

### Abstract

In order to support identification and investigation of longicorn coleoptera in Sri Lanka, we have compiled a checklist of Sri Lankan longicorn with 26 color pictures based on the collection of the coauthors, FUJIMURA Toshihiko and OHTAKE Akio, in conjunction with previous studies. The checklist presents 86 species with information on their host plants and distributions. The listed species belong to Vesperidae (1), Cerambycidae, Prioninae (9), Lepturinae (1) and Cerambycinae (75). The checklist includes 5 species newly recorded from Sri Lanka..

**Key words** : Longicorn beetles, Checklist, Forest insect, Sri Lanka

### Introduction

Sri Lanka, which has rich forests, lies in the Indian Ocean to the southwest of the Bengal Bay and to the southeast of the Arabian Sea. Longicorn beetles“typical forest insects” constitute one of the largest groups of wood boring insects. Most are wood scavengers, and some are injurious to living trees including plantations and orchids. Cerambycid beetles occurred in Sri Lanka were investigated by C. J. Gahan who edited Fauna of British India, Col. 1 in 1906. Thereafter Gahan’s work, studies on longicorn coleoptera in Sri Lanka blacked out. Therefore, to support investigating in longicorn beetles, we compiled a checklist of cerambycid beetles in Sri Lanka. In the present checklist, 86 species are listed with 5 new record species, color pictures of 26 species, host plants past recorded and detail distributions.

Specimens discussed in this work are deposited in Forestry and Forest Products Research Institute (FFPRI) and National Institute of Agro-Environmental Science (NIAES).

### Checklist of longicorn coleoptera in Sri Lanka (1)

#### Family Vesperidae

#### Subfamily Philiinae

#### Tribe Philini

##### 1. *Doesus taprobanicus* Gahan

*Doesus taprobanicus* Gahan, 1906, Fauna Brit. India, Col. 1:  
56 (Ceylon).

Specimen examined: No examined.

Host plant: Unknown.

Distribution: Sri Lanka.

#### Family Cerambycidae

#### Subfamily Prioninae

#### Tribe Macrotomini

##### 2. *Rhaphipodus taprobanicus* Gahan (Pl. 1, Fig. 1)

*Rhaphipodus taprobanicus* Gahan, 1890, Anns. Mag. nat. Hist., (6)5: 49 (Ceylon); Lameere, 1903, Mém. Soc. ent. Belg., 11: 73 (Révision Prion., p. 267) (Ceylon); Gahan, 1906, Fauna Brit. India, Col. 1: 30, fig. 12 (Ceylon); Lameere, 1913, Col. Cat. Junk, 52: 31 (Ceylon).

Specimen examined: 1♀, Ukuwela, Kandy, 19. VII. 1975, T. Fujimura leg. (NIAES).

Host plant: Unknown.

Distribution: Sri Lanka.

##### 3. *Bander pascoei pascoei* (Lansberge)

*Macrotoma luzonum* Pascoe, 1869, Trans. ent. Soc. Lond., (3)3: 666 (nec Fabricius, 1775) (Sarawak and Aru Is.).

*Macrotoma Pascoei*: Lansberge, oct. 1884, Note Leyden Mus., 6: 144 (Sumatra, Banga, Billiton and Borneo).

*Macrotoma fisheri*: Waterhouse, dec. 1884, Anns. Mag. nat. Hist., (5)14: 382 (Burma).

*Macrotoma fisheri*: Gahan, 1906, Fauna Brit. India, Col. 1: 35 (Burma).

原稿受付：平成20年1月8日 Received 8 January 2008 原稿受理：平成20年3月10日 Accepted 10 March 2008

1) Department of Forest Entomology, Forestry and Forest Products Research Institute (FFPRI)

2) Forest Research Center, Kumbalipola, Boyagane, Kurenegala, Sri Lanka

3) Ishigaki City, Okinawa Pref.

4) Kyoto City, Kyoto Pref.

\* Department of Forest Entomology, Forestry and Forest Products Research Institute (FFPRI), Matsunosato 1, Tsukuba, Ibaraki 305-8687, Japan; e-mail: makihara@ffpri.affrc.go.jp

*Macrotoma (Bander) Fisheri*: Lameere, 1912, Mem. Soc. ent. Belg., 21: 144 (Rév., p. 1008); 1913, Col. Cat. Junk, 52: 29 (Burma and Cochichina); 1919, Gen. Ins. Wystman, 172: 52 (Burma, Cochichina and Thibet).

*Macrotoma (Bander) Pascoei*: Lameere, 1912, Mem. Soc. ent. Belg., 21: 144 (Rév., p. 1008) ; 1913, Col. Cat. Junk, 52: 29 (Sumatra, Banga, Billiton and Borneo); 1919, Gen. Ins. Wystman, 172: 52 (Tonkin, Cochichina, Sumatra, Banga, Billiton and Borneo).

*Macrotoma (Bander) fisheri*: Gressitt, 1951, Longicornia, 2: 11 (Thibet); Gilmour, 1954, Bull. Inst. Sci. Nat. Brux., 30(24): 29, pl. 1, figs. 1 and 2 (Thibet); Gressitt & Rondon, 1970, Pac. Ins. Mon., (24): 13 (Burma, S. China, S. Vietnam and Laos).

*Macrotowa [sic] (Bander) fisheri* ssp. *khoi* Hayashi, 1975, Bull. Osaka Jonan Women's Jr. Coll., 10: 168, pl. 1, fig. 2 (Malaysia).

*Macrotoma fisheri* [sic] : Heyrovsky, 1976, Kumbu Himal, 5: 125 (Nepal).

*Bander pascoei pascoei*: Quentin & Villiers, 1981, Ann. Soc. ent. Fr. (N. S.), 17(1): 363 (Ceylon, India, Thibet, Myanmar, Thailand, Malay Peninsula, Sumatra, Java, Borneo, Billiton, Cochichina, Annam, Tonkin, S. China and Hainan Is.).

Specimen examined: No examined.

Host plants: *Castanea mollissima*, *Diospyros kaki*, *Malus pumila*, *Pistacia chinensis*, *Prunus armeniaca*, *P. persica*, *Pyrus serotina* and *Quercus variabilis* (Gressitt, 1951).

Distribution: Sri Lanka, India, Thibet, Nepal, Myanmar, Thailand, Laos, Vietnam, Malay Peninsula, Sumatra, Java, Borneo, Billiton Is., Banga Is., S. China and Hainan Is.

#### 4. *Anomophysis spinosa* (Fabricius) (Pl. 1, Fig. 2)

*Prionus spinosus* Fabricius, 1787, Mant. Ins., 1: 130 (Tranquebariae).

*Macrotoma spinosa + ellioti + difformis*: Lameere, 1903, Mem. Soc. ent. Belg., 11: 162 et 199 (Révision, p. 359 et 393)(part); Gahan, 1906, Fauna Brit. India, Col. 1: 38 (part: Ceylon, India).

*Macrotoma (Zooblast) spinosa*: Lameere, 1913, Col. Cat. Junk, 52: 28 (part: Ceylon, India); 1919, Gen. Ins., 172: 51 (part: Ceylon, India); Duffy, 1968, Imm. Stages Orient. Timb, Beetl., p. 46 (part: Ceylon, India).

*Anomophysis spinosa*: Quentin et Villiers, 1981, Anns. Soc. ent. Fr. (N. S.), 17(1): 380 (India, Sri Lanka).

Specimen examined: 1♂, Kala Oya, near Willpattu Nat. Park, 15.III. 1975, A. Ohtake leg. (FFPRI).

Host plants: *Casuarina equestifolia*, *Lannea coromandelica* (Beeson & Bhatia, 1939).

Distribution: Sri Lanka, India.

### Tribe Megopodini

#### 5. *Baralipton dorhni* (Lameere)

*Megopis (Baralipton) Dorhni* Lameere, 1909, Anns. Soc. ent. Belg., 53: 160 (Rév. Prion., p. 574).

*Baralipton dorhni*: Lepesme & Breuning, 1952, Trans. Ninth int. Congr. Ent., 1: 40.

Specimen examined: No examined.

Host plant: Unknown.

Distribution: Sri Lanka.

#### 6. *Megopis (Megopis) terminalis* Gahan (Pl. 1, Fig. 3)

*Aegosoma terminale* Gahan, 1906, Fauna Brit. India, Col. 1, p. 49 (Ceylon).

*Megopis (Megopis) terminalis*: Lameere, 1909, Anns. ent. Soc. Belg., 53: 146 (Rév., p. 560) (Sri Lanka).

Specimen examined: 1♂, Ganoruwa, Kandy, 8. V. 1975, T. Fujimura leg. (NIAES).

Host plant: Unknown.

Distribution: Sri Lanka.

#### 7. *Spinimegopis cingalensis* (White) (Pl. 1, Fig. 4)

*Aegosoma Cingalensis* White, 1853, Cat. Col. Brit. Mus., Longic., 1: 31 (Ceylon).

*Aegosoma cingalensis*: Gahan, 1906, Fauna Brit. India, Col. 1, p. 46 (Ceylon).

*Megopis (Baralipton) cingalensis*: Lameere, 1909, Anns. ent. Soc. Belg., 53: 159 (Rév., p. 573) (Ceylon); Duffy, 1968, Imm. Stages Orient. Timb. Beetl., p. 51 (Ceylon).

*Megopis cingalensis*: Drumont, 2003, Le Cahiers Magallanes, 24: 3 (Sri Lanka).

*Spinimegopis cingalensis*: Komiya & Dumont, 2007, Elytra, Tokyo, 35(1): 360 (Sri Lanka).

Specimens examined: 1♂, Hills, South of the Lake Kandy, 6. III. 1975, A. Ohtake leg. (FFPRI); 1♂, same locality & collector as above, 6. III. 1975(FFPRI); 1♂, same locality & collector as above, 26. III. 1975(FFPRI); 1♂, same locality & collector as above, 4. IV. 1975. (FFPRI).

Host plants: *Acacia melanoxylon*, *Alsodaphne semecarpifolia*, *Eucalyptus globulus*, *Michelia nilagirica*, *Rhododendron arboreum* and *Semecarpus thwaitesii* (Duffy, 1968).

Distribution: Sri Lanka.

### Tribe Prionini

#### 8. *Dorysthenes rostratus* (Fabricius)

*Prionus rostratus* Fabricius, 1792, Ent. Syst., I, 2: 243; Olivier, 1795, Ent., 4(66): 36 (India).

*Dorysthenes rostratus*: Vigors, 1826, Zool. Jl., 2: 516, pl. 19,

fig. 4 (India); Gahan, 1906, Fauna Brit. India, Col. 1: 6, fig. 1 (India, Thailand?); Lameere, 1911, Anns. Soc. ent. Belg., 55: 348 (Révision Prion., p. 780) (India, Ceylon); 1913, Col. Cat. Junk, 52: 71 (S. India, Ceylon); 1919, Gen. Ins. Wytsman, p. 131 (S. India, Ceylon).

*Cyrtognathus rostratus*: Castelnau, 1840, Hist. nat. An. Art., 2: 389 (India).

Specimen examined: No examined.

Host plant: Unknown.

Distribution: Sri Lanka, S. India.

9. *Prionomma (Prionomma) atratum* (Gmelin) (Pl. 1, Fig. 5)

*Prionus atratum* Gmelin, 1789, Syst. Nat., I(4): 1818 (S. India, Ceylon).

*Prionus orientalis* Olivier, 1795, Ent., 4(66): 28, pl. 13, fig. 51 (S. India, Ceylon).

*Prionus tranquebaricus* Fabricius, 1798, Ent. Syst., Suppl., p. 141 (S. India, Ceylon).

*Prionoma orientalis*: White, 1853, Cat. Col. Brit. Mus., 7, Longic., 1: 19, pl. 1, fig. 3 (S. India, Ceylon).

*Prionomma atratum*: Gahan, 1906, Fauna Brit. India, Col., 1: 17, fig. 5 (S. India, Ceylon).

*Prionoma (Prionomma) atratum*: Lameere, 1910, Anns. Soc. ent. Belg., 54: 279 (Révision Prion., p. 708) (India, Ceylon); 1913, Col. Cat. Junk, 52: 71 (S. India, Ceylon); 1919, Gen. Ins. Wytsman, p. 131 (S. India, Ceylon); Duffy, 1968, Imm. Orient. Timb. Beetl., p.56 (Ceylon, India).

Specimens examined: 1♀, Kandy, 24. X. 1973, A. Ohtake leg. (FFPRI); 1♂, Kandy, 1. XII. 1973, A. Ohtake leg. (FFPRI); 1♀, Kandy, 2. XII. 1973, A. Ohtake leg. (FFPRI); 1♀, Ampitiya, Kandy, 15. IX. 1975, T. Fujimura leg. (NIAES); 1♂, Napana, Kandy, 5. X. 1975, T. Fujimura leg. (NIAES); 1♀, Gannoguwa, Kandy, 11. X. 1975, T. Fujimura leg. (NIAES); 1♀, Gannoguwa, Kandy, 24. X. 1975, T. Fujimura leg. (NIAES); 1♀, Ampitiya, Kandy, 26. X. 1975, T. Fujimura leg. (NIAES); 3♂♂2♀♀, Hapana, Kandy, 5. X. 1977, T. Fujimura leg. (NIAES); 5♂♂4♀♀, Kurunegalla, 9. X. 1977, T. Fujimura leg. (NIAES); 1♂, Napana, Kandy, 11. X. 1977, T. Fujimura leg. (NIAES); 1♂, Aniewatta, Kandy, 17. X. 1977, T. Fujimura leg. (NIAES); 1♂1♀, Napana, Kandy, 17. X. 1977, T. Fujimura leg. (NIAES).

Host plant: *Boswellia serrata* (Duffy, 1968).

Distribution: Sri Lanka, India.

**Tribe Anacolini**

10. *Cantharocnemis downesi* Pascoe

*Cantharocnemis Downesi* Pascoe, 1858, Trans. ent. Soc. Lond., (2)4: 236 (Bombay, Ceylon); Lameere, 1911,

Anns. Soc. ent. Belg., 46: 314 (Révision Prion., p. 102) (Bombay, Ceylon); 1913, Col. Cat. Junk, 52: 79 (Bombay, Ceylon); 1919, Gen. Ins. Wytsman, p. 142 (Bombay, Ceylon).

*Cantharocnemis downesi*: Gahan, 1906, Fauna Brit. India, Col., 1: 26, fig. 10 (Bombay, Ceylon).

Specimen examined: No examined.

Host plant: Unknown.

Distribution: Sri Lanka, S. India.

**Subfamily Lepturinae**

**Tribe Xylosteini**

11. *Capnolymma cingalensis* Gahan

*Capnolymma cingalensis* Gahan, 1906, Fauna Brit. India, Col. 1: 73, fig. 28 (Ceylon); Duffy, 1968, Imm. Orient. Timb., Beetl., p. 73 (Ceylon, India).

Specimen examined: No examined.

Host plants: *Terminalia paiculata*, *Pterocarpus dalbergioides* (Duffy, 1968).

Distribution: Sri Lanka, S. India.

**Subfamily Cerambycinae**

**Tribe Methiini**

12. *Xystrocera globosa* (Olivier) (Pl.1, Fig. 7)

*Cerambyx globosus* Olivier, 1795, Ent., 4: 27, pl. 12, fig. 81 (Java).

*Xystrocera globosa*: Serville, 1834, Anns. Soc. ent. Fr., 3: 69 (Java); Gahan, 1906, Fauna Brit. India, Col. 1: 196, Fig. 42 (India, Ceylon, Burma, Siam, Malay Peninsula, Java, Celebes, Philippines, Egypt, Mauritius and Hawaii Is.); Duffy, 1968, Imm. Stages Orient. Timb. Beetl., p.73 (Andaman Is., Burma, Celebes, Ceylon, China, East Pakistan, Formosa, India, Java, Malaya, New Guinea, Philippine Is., Seychelles, Sumatra, Thailand, Australia, Arabia, Egypt, Japan, Korea, Madagascar, Rodrigues, Mauritius, Hawaii Is. and Caribbean); Matsumoto, 2000, Tropical Forestation, (47): 15 (East Asia, Tropical and Subtropical Asia, Australia, Seychelles, Mauritius, Madagascar, Egypt, Hawaii Is. and Puerto Rico).

Specimens examined: 1♀, 26. VI. 1973, Paradeniya, Kandy Distr., A. Ohtake leg. (FFPRI); 1♂, Kandy, 23. II. 1974, A. Ohtake leg. (FFPRI); 1♂, Kandy, 30. IX. 1975 A. Ohtake leg. (FFPRI); 1♀, 2. III. 1976, A. Ohtake leg. (FFPRI); 1♂, Katumaya, X. 1987, T. Kawashita leg. (FFPRI).

Host plants: *Acacia arabica*, *A. catechu*, *A. chinensis*, *A. confusa*, *A. cordifolia*, *A. modesta*, *Acrocarpus fraxinifolius*, *Adenatehera pavonia*, *Albizia lebek*, *A. lucida*, *A. odoratissima*, *A. procera*, *A. stipulata*, *Bauhinia acuminata*, *Cassia glauca*, *Duabanga sonneratioides*,

*Grewia tiliaefolia*, *Haematoxylon campechianum*, *Paraserianthes falcataria*, *Parkia speciosa*, *Prunus persica*, *Salmalia malabarica*, *Samanea samon*, *Theobroma* and *Xylia xylocarpa*, (Duffy, 1968); *Acacia auriculoformis*, *A. mangium*, *Albizia lebbbeck* and *Xylia dolabriformis* (Matsumoto, 2000).

Distribution: Sri Lanka, Andaman Is., Burma, Celebes, China, East Pakistan, Formosa, India, Java, Malaya, New Guinea, Philippine Is., Seychelles, Sumatra, Thailand, Australia, Arabia, Egypt, Japan, Korea, Madagascar, Rodriguez, Mauritius, Hawaii Is. and Caribbean.

13. *Tetraommatus filiformis* Perroud

*Tetraommatus filiformis* Perroud, 1855, Anns. Soc. Linn. Lyon (2)2: 391 (Ceylon); Gahan, 1906, Fauna Brit. India, Col. 1: 101, fig. 40 (Ceylon); Duffy, 1968, Imm. Orient. Timb. Beetl., p.73 (Ceylon).

Specimen examined: No examined.

Host plant: *Chloroxylon swietenia* (Duffy, 1968).

Distribution: Sri Lanka.

14. *Tetraommatus muticus* Pascoe

*Tetraommatus muticus* Pascoe, 1858, Trans. ent. Soc. Lond., (2)5: 25. (Ceylon); Duffy, 1906, Fauna Brit. India, Col. 1: 101 (Ceylon).

Specimen examined: No examined.

Host plant: Unknown.

Distribution: Sri Lanka.

15. *Amimes macilentus* Pascoe

*Psilimerus? macilentus* Pascoe, 1858, Trans. ent. Soc. Lond., (2)4: 238 (Ceylon).

*Amimes macilentus*: Gahan, 1906, Fauna Brit. India, Col. 1: 99, fig. 39 (Ceylon).

Specimen examined: No examined.

Host plant: Unknown.

Distribution: Sri Lanka.

16. *Hypoeshrus indicus* Gahan

*Hypoeshrus indicus* Gahan, 1906, Fauna Brit. India, Col. 1: 104, fig. 41 (India); Duffy, 1968, Imm. Orient. Timb. Beetl., p.87 (Ceylon, India).

Specimen examined: No examined.

Host plants: *Acacia catechu*, *Dichopsis grandis* and *Shorea robusta* (Beeson and Bhatia, 1939); *Acacia senegal*, *Gymnosporia montana* (Duffy, 1968).

Distribution: Sri Lanka, India.

**Tribe Hesperophanini**

17. *Stromatium barbatum* (Fabricius)

*Callidium barbatum* Fabricius, 1775, Syst. Ent., p. 180 (East India).

*Stromatium barbatum*: Castelnau, 1840, Hist. Nat., 2: 452; Gahan, 1906, Fauna Brit. India, Col. 1: 114, fig. 45 (India, Ceylon, Burma, Andamans, Bourbon and Madagascar); Aurivillius, 1912, Coleoptm. Cat. Junk, 39: 73 (East India, Ceylon, Birma, Andamanen, Madagascar, Mauritiu, Bourbon and Seychellen); Duffy, 1968, Imm. Orient. Timb. Beetl., p.120, pl.14, fig.1 (Andaman Is., Burma, Ceylon, East Pakistan, India, West Pakistan, Seychelles, Madagascar, Mauritius, Réunion and Rodriguez).

*Callidium funestum* Boisd., 1835, Voy. d'Astrolabe, 2: 481.

*Callidiellum tranquebaricum* Gmelin, 1790, Syst. Nat., 1, 4: 1848.

Specimen examined: No examined.

Host plants: *Abies*, *Acacia*, *Acer*, *Aesculus*, *Alangium*, *Albizia*, *Alnus*, *Anogeissus*, *Annona*, *Anthocephalus*, *Ardisia*, *Artocarpus*, *Averrhoa*, *Balanites*, *Bambusa*, *Bauhinia*, *Beaumontia*, *Betula*, *Bischofia*, *Boswellia*, *Bridelia*, *Broussonetia*, *Butea*, *Canarium*, *Carallia*, *Carapa*, *Carpinus*, *Cassia*, *Casuarina*, *Cedrela*, *Cedrus*, *Celtis*, *Chloroxylon*, *Cinnamomum*, *Citrus*, *Clausena*, *Clerodendrum*, *Coffea*, *Cordia*, *Cordyline*, *Cornus*, *Corylus*, *Cotoneaster*, *Crateagus*, *Cryptomeria*, *Cudrania*, *Cupressus*, *Dalbergia*, *Debregeasia*, *Dendrocalamus*, *Desmodium*, *Deutzia*, *Diospyros*, *Dipterocarpus*, *Docynia*, *Elaeagnus*, *Elaeocarpus*, *Eriobitrya*, *Eriolobus*, *Erythrina*, *Eucalyptus*, *Eugenia*, *Euonymus*, *Eurya*, *Exocoecaria*, *Fagus*, *Feronia*, *Ficus*, *Fraxinus*, *Gamblea*, *Garcinia*, *Gardenia*, *Garuga*, *Gaya*, *Gmelina*, *Gouania*, *Grevillea*, *Grewia*, *Gynocardia*, *Hedera*, *Helicia*, *Helicteres*, *Heritiera*, *Heteropanax*, *Hiptage*, *Holigarna*, *Holmskioldia*, *Holoptelea*, *Hopea*, *Hypericum*, *Ilex*, *Indigofera*, *Juglans*, *Kydia*, *Lagerstroemia*, *Lannea*, *Larix*, *Lasiosiphon*, *Leucomeis*, *Litsea*, *Machilus*, *Malus*, *Madhuca*, *Magnolia*, *Mallotus*, *Mangifera*, *Mappia*, *Meliosma*, *Michelia*, *Millettia*, *Mimusops*, *Norus*, *Murraya*, *Myrica*, *Myrsine*, *Olearia*, *Ougeinia*, *Oxyspora*, *Parkinsonia*, *Parrotira*, *Pentacme*, *Phlogacanthus*, *Photinia*, *Picea*, *Pinus*, *Piptadenia*, *Piptanthus*, *Pistacia*, *Pithcellobium*, *Pittosporum*, *Plecosperrum*, *Poinciana*, *Polygala*, *Pongamia*, *Populus*, *Premna*, *Prinsepia*, *Prosopis*, *Prunus*, *Pterocarpus*, *Pterygota*, *Pyrus*, *Quercus*, *Randia*, *Rhamnus*, *Rhododendron*, *Rhus*, *Ribes*, *Rosa*, *Rubus*, *Salix*, *Salmalia*, *Salvadora*, *Sapium*, *Saurauja*, *Semecarpus*, *Sesbania*, *Shorea*, *Siphonodon*, *Sonneratia*, *Sorbus*, *Spiraea*, *Spondias*, *Staphylea*, *Styrax*, *Sterculia*, *Syzygium*, *Tectona*, *Terminalia*, *Tilia*, *Toddalia*, *Toricellia*, *Trewia*, *Turpinia*, *Ulmus*, *Vibramum*, *Woodfoldia*, *Wrightia*, *Xylosoma* and *Ziziphus* (Duffy,

1968).

Distribution: Sri Lanka, India, Andaman Is., Myanmar, Bangladesh, Pakistan, Seychelles, Madagascar, Mauritius, Réunion and Rodriguez.

18. *Gnatholea simplex* Gahan (Pl.1, Fig. 7)

*Gnatholea simplex* Gahan, 1890, Annl. Mag. nat. Hist., (6)5: 53 (Sikkim); 1906, Fauna Brit. India, Col. 1: 111, fig. 44 (Sikkim, Assam and Burma).

Specimens examined: 5♂♂2♀♀, Near Habarane, Anuradhapura Dist., 11. V. 1975, A. Ohtake leg. (FFPRI).

Host plant: Unknown.

Distribution: Sri Lanka (New record), Sikkim, Assam and Myanmar.

19. *Zoodes eburioides* Lacordaire

*Zoodes eburioides* Lacordaire, 1869, Gen. Coleoptm., 8: 282 (Ceylon); Gahan, 1906, Fauna Brit. India, Col. 1: 118 (Ceylon).

?*Stromatium carinulatum* Karsche, 1882, Berl. ent. Zeit., 26: 389 (Ceylon).

*Stromatium signiferum* Pascoe, 1885, Annl. Mag. nat. Hist., (5)15: 53 (Ceylon).

Specimen examined: No examined.

Host plant: Unknown.

Distribution: Sri Lanka.

20. *Zoodes maculatus* (White)

*Stromatium? maculatum* White, 1855, Cat Col. Brit. Mus., 8, Longic., 2: 301, t. 7, fig. 4 (Ceylon).

*Zoodes maculatus*: Lacordaire, 1869, Gen. Coleoptm., 8: 282(Ceylon); Gahan, 1906, Fauna Brit. India, Col. 1: 116 (Ceylon).

Specimen examined: No examined.

Host plant: Unknown.

Distribution: Sri Lanka.

**Tribe Phoracanthini**

21. *Nyphasia torrida* Pascoe

*Nyphasia torrida* Pascoe, 1867, Annl. Mag. nat. Hist., (3)19: 313 (Ceylon); Gahan, 1906, Fauna Brit. India, Col. 1: 152 (Ceylon).

Specimen examined: No examined.

Host plant: Unknown.

Distribution: Sri Lanka.

**Tribe Cerambycini**

22. *Neocerambyx opulentus* Holzschuh

*Neocerambyx opulentus* Holzschuh, 1998, FBVA-Berichte, 107, p. 31, fig. 39 (Sri Lanka).

Specimen examined: No examined.

Host plant: Unknown.

Distribution: Sri Lanka.

23. *Aeolesthes (Aeolesthes) holosericea* (Fabricius)

*Cerambyx holosericea* Fabricius, 1787, Mant. Ins., 1: 135 (India).

*Aeolesthes holosericea*: Gahan, 1906, Fauna. Brit. India, Col. 1: 127 (India, Ceylon, Assam, Andamans, Nicobar Is., Thailand and Malay Peninsula); Duffy, 1968, Imm. Orient. Timb. Beetl., p. 99, fig. 51 (Andaman Is., Burma, Ceylon, China, India, Jammu, Kashmir, Vietnam, Malaya, Nicobar Is., Philippines, Thailand and West Pakistan).

*Aeolesthes* (s. str.) *holosericea*: Gressitt & Rondon, 1970, Pac. Ins. Mon., (24): 65 (Ceylon, India, S. China, Hainan, Thailand, Malaysia, Indonesia and Laos).

*Pachydissus similis* Gahan, 1890, Annl. Mag. nat. Hist., (6)5: 52 (India, Ceylon).

*Neocerambyx holosericeus*: Cotes, 1889, Ind. Mus. Notes, 1(2): 60, 80, pl. 5, fig. 3 (India, Ceylon).

Specimen examined: No examined.

Host plants: *Acacia*, *Aegele*, *Alnus*, *Anacardium*, *Anogeissus*, *Bauhinia*, *Boswellia*, *Bridelia*, *Butea*, *Careya*, *Casearia*, *Cedrwla*, *Chloroxylon*, *Cynometra*, *Dipterocarpus*, *Duabanga*, *Eucalyptus*, *Excaecaria*, *Ficus*, *Grewia*, *Hardwickia*, *Jugulans*, *Mangifera*, *Psidium*, *Kydia*, *Lagerstroemia*, *Lamnea*, *Mallotus*, *Miliusa*, *Morus*, *Myristica*, *Ougeinia*, *Pentacme*, *Pinus*, *Polyartia*, *Prunus*, *Pterocarpus*, *Pyrus*, *Quecus*, *Samalia*, *Sapium*, *Shorea*, *Soymida*, *Tamarix*, *Tectona* and *Terminalia* (Duffy, 1968).

Distribution: Ceylon, India, Pakistan, S. China, Hainan, Thailand, Malaysia, Indonesia and Laos.

24. *Aeolesthes (Aeolesthes) induta* (Newman)

*Hammaticherus indutus*; Newman, 1842, Entomol., 1: 245 (Philippines).

*Aeolesthes induta*: Gahan, 1906, Fauna. Brit. India, Col. 1: 128 (Ceylon, Upper Burma, Thailand, Sumatra, Java, Borneo and Philippine Is.); Duffy, 1968, Imm. Orient. Timb. Beetl., p.103 (Borneo, Burma, Ceylon, China, Formosa, Hong Kong, India, Java, Philippines, Sumatra and Thailand).

*Aeolesthes* (s. str.) *induta*: Gressitt & Rondon, 1970, Pac. Ins. Mon., (24): 65, fig. 13b (Ceylon, Burma, S. China, Thailand, Sunda Is., Philippines and Laos).

Specimen examined: No examined.

Host plants: *Camellia thea*, *Chloroxylon swietenia*, *Delonix regia*, *Dracontomelon dao*, *Eugenia operculata*, *Hymenodictyon excelsum*, *Melia azedarach*, *Melia japonica*, *Parashorea malayanonan*, *Pinus*, *Sapium*

- sebiferum* and *Theobroma* (Duffy, 1968).  
Distribution: Sri Lanka, Myanmar, India, S. China, Thailand, Sunda Is., Philippines and Laos.
25. *Plocaederus consocius* (Pascoe)  
*Cerambyx consocius* Pascoe, 1859, Trans. ent. Soc. Lond., (2)5: 20 (Ceylon).  
*Plocaederus consocius*: Gahan, 1890, Anns. Mag. nat. Hist., (6)6: 258 (Ceylon); 1906, Fauna Brit. India, Col. 1: 124 (Ceylon).  
Specimen examined: No examined.  
Host plant: Unknown.  
Distribution: Sri Lanka.
26. *Plocaederus ferrugineus* (Linnaeus)  
*Cerambyx ferrugineus* Linnaeus, 1766, Syst. Nat., 12th ed., p.626 (Ceylon).  
*Plocaederus ferrugineus*: Gahan, 1906, Fauna Brit. India, Col. 1: 121 (Ceylon, Trivandrum); Duffy, 1968, Imm. Orient. Timb. Beetl., p.116 (Ceylon, India).  
*Cerambyx gigas* Fabricius, 1787, Mant. Ins., 1: 132.  
*Lamia umbrina* Dalm., 1817, in Schoen. Syn. Ins., 1, 3, Append., p.161.  
*Hammaticherus nitidus* White, 1853, Cat. Col. Brit. Mus., 7, Longic., 1: 127(Ceylon).  
*Cerambyx versutus* Pascoe, 1859, Trans. ent. Soc. Lond., (2)5: 20 (Ceylon).  
*Plocaederus ferrugineus*, var. *niger* Gahan, 1890, Anns. Mag. nat. Hist., (6)5: 52 (Bengal).  
Specimen examined: No examined.  
Host plants: *Anacardium occidentale*, *Boswellia serrata*, *Buchanania lanzan*, *Diospyros melanoxylon*, *Hardwickia binata*, *Lannea coromandelica*, and *Salmalia malabarica* (Duffy, 1968).  
Distribution: Sri Lanka, India.
27. *Plocaederus obesus* Gahan  
*Plocaederus obesus* Gahan, 1906, Fauna Brit. India, Col. 1: 121, fig. 47 (India, Ceylon); Duffy, 1968, Imm. Orient. Timb. Beetl., p.114 (Ceylon, India, Andaman is., Myanmar, China, Bangladesh, Taiwan, Hainan Is., Indo-China and Thailand).  
Specimen examined: No examined.  
Host plants: *Boswellia serrata*, *Buchanania lanzan*, *Butea monosperma*, *Caryota urens*, *Cedrela toona*, *Ceiba pentandra*, *Cordia dichotoma*, *Dracontomelon dao*, *Eriodendron anfractuosum*, *Garuga pinnata*, *Gmelina arborea*, *Kydia calycina*, *Lannea coromandelica*, *Mangifera indica*, *Odina*, *Protium serratum*, *Pterocarpus marsupium*, *Salmalia malabarica*, *Shorea robusta*, *Spondias mangifera*, *Sterculia colorata*, *S. urens*, *S. villosa* and *Terminalia tomentosa* (Duffy, 1968).  
Distribution: Sri Lanka, India, Andaman Is., Myanmar, S. China, Bangladesh, Taiwan, Hainan Is., Laos and Thailand.
28. *Massicus venustus* Pascoe  
*Massicus venustus* Pascoe, 1859, Trans. ent. Soc. Lond., (2)5: 19 (Ceylon); Gahan, 1906, Fauna Brit. India, Col. 1: 130 (Ceylon).  
Specimen examined: No examined.  
Host plant: Unknown.  
Distribution: Sri Lanka.
29. *Diorthus cinereus* (Fabricius) (Pl. 1, Fig. 8)  
*Cerambyx cinereus* Fabricius, 1792, Ent. Syst., 1, 2, p.265 (Tranquebar).  
*Hammaticherus simplex* White, 1853, Cat. Col. Brit. Mus., 7, Longic., 1: 130 (W. Africa).  
*Diorthus simplex*: Gahan, 1906, Fauna Brit. India, Col. 1: 133, fig. 51 (Baluchistan, Ormarah, Karachi, Bengal, Madras, Ceylon, N. Burma, Siam, Java, Aden, Mauritius and W. Africa).  
*Diorthus* [sic] *cinereus*: Aurivillius, 1912, Coleoptm. Cat., 39: 56 (West Africa, Mauritius, East India, Ceylon, Java, Birma and Siam).  
*Diorthus cinereus*: Duffy, 1968, Imm. Orient. Timb. Beetl., p.107 (Burma, Ceylon, India, Java, Thailand, West Pakistan, West Africa, Aden, Tanzania and Mauritius); Gressitt & Rondon, 1970, Pac. Ins. Mon., (24): 71, fig. 14b (West Africa, Aden, Baluchistan, Pakistan, India, Ceylon, N. Burma, Thailand, Java, Laos).  
Specimen examined: 1♂, Sigiriya, 15. VII. 1998, T. Kawashita leg.  
Host plants: *Acacia leucophloea*, *Albizia odoratissima*, *Anogeissus latifolia*, *Bauhinia vahlii*, *Butea superba*, *Cassia fistula*, *Dalbergia fusca*, *D. sisso*, *Dichopsis grandis*, *Eugenia*, *Hardwickia binata*, *Heritiera minor*, *Lannea coromandelica*, *Mallotus philippinensis*, *Quercus incana*, *Scutia indica* and *Shorea robusta* (Duffy, 1968).  
Distribution: Sri Lanka, India, Myanmar, Thailand, Java, Laos, W. Africa, Mauritius, Aden, Baluchistan and Pakistan.
30. *Dymasius macilentus* (Pascoe) (Pl.1, Fig. 9)  
*Cerambyx macilentus* Pascoe, 1859, Trans. ent. Soc. Lond., (2)5: 20 (Ceylon).  
*Dymasius macilentus*: Gahan, 1906, Fava Brit. India, Col. 1: 139, fig. 55 (Ceylon).  
Specimen examined: 1♂, Sigiriya, Matale Distr., 10. V. 1975,

- A. Ohtake leg. (EEPRI).  
Host plant: Unknown.  
Distribution: Sri Lanka.
31. *Dymasius minor* Gahan (Pl. 2, Fig. 1)  
*Dymasius minor* Gahan, 1906, Fauna Brit. India, Col. I: 140 (S. India).  
Specimen examined: 1♀, Sigiriya, Matale Distr., 11. V. 1975, A. Ohtake leg. (FFPRI).  
Host plant: Unknown.  
Distribution: Sri Lanka (New record), S. India.
32. *Dialeges undulatus* Gahan  
*Dialeges undulatus* Gahan, 1891, Anns. Mag. nat. Hist., (6)7: 23 (Ceylon); 1906, Fauna Brit. India, Col. 1: 143 (Ceylon, Burma, Siam); Duffy, 1968, Imm. Orient. Timb. Beetl., p.106 (Burma, Ceylon, Hainan Is., Thailand).  
Specimen examined: No examined.  
Host plant: *Actinophora fragrans*, *Berrya cordifolia*, *Prunus puddum*, *Pyrus communis* and *Xylia xylocarpa* (Duffy, 1968).  
Distribution: Sri Lanka, Myanmar, Thailand and Hainan Is.
33. *Sebasmia templetoni* Pascoe  
*Sebasmia templetoni* Pascoe, 1859, Trans. ent. Soc. Lond., (2)5: 19 (Ceylon); Gahan, 1906, Fauna Brit. India, Col. 1: 144, fig. 57 (Ceylon).  
Specimen examined: No examined.  
Host plant: Unknown.  
Distribution: Sri Lanka.
34. *Sebasmia testacea* Gahan  
*Sebasmia testacea* Gahan, 1906, Fauna Brit. India, Col., 1, p.144 (Ceylon).  
Specimen examined: No examined.  
Host plant: Unknown.  
Distribution: Sri Lanka.
35. *Xoanodera amoena* Pascoe (Pl. 2, Fig. 11)  
*Xoanodera amoena* Pascoe, 1885, Anns. Mag. nat. Hist., (5)15: 53 (Ceylon); Gahan, 1906, Fauna Brit. India, Col. 1: 150 (Ceylon).  
Specimens examined: 2♀♀, Hills, South of the Lake, Kandy, 19. III. 1975, A. Ohtake leg. (FFPRI).  
Host plant: Unknown.  
Distribution: Sri Lanka.
- Tribe Callidiopini**
36. *Gelonaetha hirta* (Fairmaire)  
*Stromatium hirta* Fairmaire, 1850, Rev. et Mag. de Zool., p. 60 (East India).  
*Gelonaetha hirta*: Gahan, 1906, Fauna Brit. India, Col. 1: 156, fig. 62 (India, Siam, Philippine Is., Sandwich Is. and Tahiti); Duffy, 1968, Imm. Orient. Timb. Beetl., p.156 (Burma, Ceylon, East Indies, India, Philippine Is., Thailand, Mariana Is., Society Is., Tahiti, Hawaiian Is. and Sandwich Is.); Gressitt & Rondon, 1970, Pac. Ins. Mon., (24): 93, fig. 17i (India, Thailand, Taiwan, Philippines, Micronesia, Polynesia, W. Indies and Laos); Makihara, 1999, PUSREHUT Sp. Public., (7): 59, pl. 10, Fig. 104 (Borneo, India, Thailand, Philippines, Micronesia, Polynesia and W. Indies).  
*Gelonaetha curtipes* Thomson, 1878, Rev. et Mag. du Zool., (3)4: 13 (Sandwich Is.).  
*Astrimus obscurus* Sharp, 1878, Trans. ent. Soc. Lond., 1878: 204 (Tahiti).  
Specimen examined: No examined.  
Host plants: *Anogeisus latifolia*, *Berrya cordifolia*, *Dipterocarpus*, *Grewia*, *Heritiera minor* and *Tectona grandis* (Duffy, 1968), *Shorea laevis* (Makihara, 1999).  
Distribution: Sri Lanka, India, Myanmar, Thailand, Laos, Hainan Is., Taiwan, Borneo, Philippines, Micronesia, Polynesia and W. Indies.
37. *Ceresium flavipes* (Fabricius) (Pl. 2, Fig. 12)  
*Callidium flavipes* Fabricius, 1792, Ent. Syst. 1(2): 327 (Cape of Good Hope).  
*Stenochorus simplex* Gyllenhal, 1817, in Schönh. Syn. Ins., 1, 3 Append.,: 178.  
*Arhopalus ambiguus* Newman, 1842, Entmol., 1: 246 (Philippines).  
*Ceresium simplex* Gahan, 1906, Fauna Brit. India, Col. 1: 162 (N. India, Burma, Tenasserim, Ceylon, Nicobar Is., Philippine Is., Sumatra, Java to New Guinea, Mauritius, Madagascar and Mexico).  
*Ceresium flavipes*: Schwarzer, 1925, Ent. Blätt., 21: 22 (Taiwan); Shiraki et al., 1933, Ini. Ins. Agr. Crops Formosa, 1: 137 (Ryukyu, Iriomote Is.); Duffy, 1968, Imm. Orient. Timb. Beetl., p. 144 (Andaman Is., Burma, Ceylon, Formosa, India, Java, Malaya, New Guinea, Nicobar Is., Philippine Is., Sumatra, Thailand, Japan, Australia, New Zealand, Norfolk Is., Lord Howe Is., Solomon Is., Cocos of Keeling Is., Madagascar, Mauritius, Rodriguez, Mexico and Tahiti); Gressitt & Rondon, 1970, Pac. Ins. Mon. (24): 96 (Laos, India and China to Indonesia etc.).  
Specimens examined: 1♀, Kandy, 20. III. 1974, A. Ohtake leg. (FFPRI); 1♀, Kandy, 11. IV. 1975, A. Ohtake leg. (FFPRI); 1♂, Lakeside, Kandy, 14. V. 1977, T. Fujimura

leg. (NIAES).

Host plants: *Artocarpus*, *Cassia fistula*, *Strebus asper*, *Casuarina equisetifolia*, *Citrus* and *Hevea* (Duffy, 1968).

Distribution: Sri Lanka, India, Andaman Is., Thailand, Laos, Taiwan, China, Indonesia, New Guinea, Solomon Is., Nicobar Is., Philippines, Australia, New Zealand, Madagascar, Mauritius, Rodriguez and Mexico.

38. *Ceresium gracile* (Perroud) (Pl. 2, Fig. 13)

*Raphidera? gracile* Perroud, 1855, Annls. Soc. Linn. de Lyon, (2)2: 333 (S. India).

*Ceresium crenatum* White, 1855, Cat. Col. Brit. Mus., 8, Longic., 2: 246 (N. India).

*Ceresium gracile*: Gahan, 1906, Fauna Brit. India, Col. 1: 157 (S. India, Ceylon).

Specimen examined: 1♀, Near Sigiriya, Matale Distr., 11. V. 1975, A. Ohtake leg. (FFPRI).

Host plant: Unknown.

Distribution: Sri Lanka, India.

39. *Ceresium nilgriense* Gahan (Pl. 2, Fig. 14)

*Ceresium nilgriense* Gahan, 1906, Fauna Brit. India, Col., 1: 161 (S. India, Ceylon); Duffy, 1968, Imm. Stages Orient. Timb. Beet., p. 143 (Ceylon, India); Gressitt & Rondon, 1970, Pac. Ins. Mon. (24): 97, fig. 18f (S. India, Ceylon and Laos).

Specimen examined: 1♂, Kandy, 26. V. 1973, A. Ohtake leg. (FFPRI).

Host plants: *Albizia lebbek*, *Shorea robusta* (Duffy, 1968).

Distribution: Sri Lanka, S. India and Laos.

40. *Ceresium rotundicolle* Pascoe

*Ceresium rotundicolle* Pascoe, 1885, Annls. Mag. nat. Hist., (5)15: 54 (S. India); Gahan, 1906, Fauna Brit. India, Col., 1: 161 (S. India, Ceylon); Duffy, 1968, Imm. Stages Orient. Timb. Beetl., p. 143 (S. India, Ceylon).

Specimen examined: No examined.

Host plants: *Berrya cordifolia*, *Cassia fistula* and *Dichopsis grandis* (Duffy, 1968).

Distribution: Sri Lanka, S. India.

41. *Ceresium zeylanicum* White (Pl. 2, Fig. 15)

*Ceresium zeylanicum* White, 1855, Col. Cat. Brit. Mus., 8, Longic., 2: 246 (Ceylon); Pascoe, 1869, Trans. ent. Soc. Lond., (3)3: 538 (Sarawak); Gahan, 1906, Fauna Brit. India, Col., 1: 155 (Ceylon, Assam, India and Borneo); Duffy, 1968, Imm. Stages Orient. Timb. Beetl., p. 143 (India, Ceylon, Burma, Java, Sumatra and Borneo); Gressitt & Rondon, 1970, Pac. Ins. Mon., (24): 99, fig. 18i (Ceylon, India, Burma, Java, Borneo, Philippines and

Laos).

Specimen examined: 1♂, near Sigiriya, Matale Distr., 11. V. 1975, A. Ohtake leg. (FFPRI).

Host plants: *Artidesma tetrandrum*, *Bauhinia malabarica*, *Careya arborea*, *Heritiera minor*, *Lagerstroemia parviflora* and *Shorea robusta* (Duffy, 1968).

Distribution: Sri Lanka, India, Myanmar, Laos, Java, Borneo and Philippines.

### Tribe Obrini

42. *Stenhomalus lateralis* Pascoe

*Stenhomalus lateralis* Pascoe, 1859, Trans. ent. Soc. Lond., (2)5: 26 (Ceylon); Gahan, 1906, Fauna Brit. India, Col. 1: 167 (Ceylon).

Specimen examined: No examined.

Host plant: Unknown.

Distribution: Sri Lanka.

43. *Stenhomalus vesculus* Holzschuh

*Stenhomalus vesculus* Holzschuh, 1986, Koleopt. Rdsch., 58: 122, fig. 8 (Ceylon).

Specimen examined: No examined.

Host plant: Unknown.

Distribution: Sri Lanka.

44. *Stenhomalus y-pallidum* Motschulsky

*Phyton Y-pallidum* Motschulsky, 1863, Bull. Mosc. 36(1): 495 (Ceylon).

*Stenhomalus Y-pallidum*: Gahan, 1906, Fauna Brit. Ind., Col. 1: 167 (Ceylon).

Specimen examined: No examined.

Host plant: Unknown.

Distribution: Sri Lanka.

### Tribe Molorchini

45. *Merionoeda taprobanica* Gahan

*Merionoeda taprobanica* Gahan, 1906, Fauna Brit. India, Col., 1: 173 (Ceylon).

Specimen examined: No examined.

Host plant: Unknown.

Distribution: Sri Lanka.

46. *Molorchus filiformis* Motschulsky

*Molorchus filiformis* Motschulsky, 1858, Etudes Ent., 7: 67 (Ceylon); Gahan, 1906, Fauna Brit. India, Col., 1: 170 (Ceylon).

Specimen examined: No examined.

Host plant: Unknown.

Distribution: Sri Lanka.



47. *Molorchus taprobanicus* Gahan  
*Molorchus taprobanicus* Gahan, 1906, Fauna Brit. India, Col.,  
1: 170 (Ceylon).  
Specimen examined: No examined.  
Host plant: Unknown.  
Distribution: Sri Lanka.

48. *Epania cingalensis* Gardner  
*Epania cingalensis* Gardner, 1936, Ind. For. Rec., 2: 131  
(Ceylon).  
Specimen examined: No examined.  
Host plant: Unknown.  
Distribution: Sri Lanka.

#### Tribe Pyrestini

49. *Pachylocerus crassicornis* (Olivier)  
*Cerambyx crassicornis* Olivier, 1795, Ent., 4(67): 51, pl. 20,  
fig. 150 (Ceylon).  
*Pachylocerus crassicornis*: Gahan, 1906, Fauna Brit. Ind.,  
Col. 1: 226, fig. 84 (Ceylon, S. India); Duffy, 1968, Imm.  
Stages Orient. Timb. Beetl., p. 192 (Ceylon, India and  
Pakistan).  
*Pachylocerus plumiferus* Pascoe, 1857, Trans. ent. Soc.  
Lond., (2)4: 96, pl. 23, fig. 5.  
Specimen examined: No examined.  
Host plant: *Loranthus longiflorus* (Duffy, 1968).  
Distribution: Sri Lanka, India and Pakistan.

#### Tribe Cleomenini

50. *Dere apicalis* Gahan  
*Dere apicalis* Gahan, 1906, Fauna Brit. India, Col., 1: 316  
(Ceylon).  
Specimen examined: No examined.  
Host plant: Unknown.  
Distribution: Sri Lanka.

51. *Halme cinctella* Gahan  
*Halme cinctella* Gahan, 1906, Fauna Brit. India, Col., 1: 311,  
fig. 101 (Ceylon).  
Specimen examined: No examined.  
Host plant: Unknown.  
Distribution: Sri Lanka.

52. *Paramimistena duplicata* Holzschuh  
*Paramimistena duplicata* Holzschuh, 1989, Koleopt. Rdsch.,  
59: 171, fig. 30 (Ceylon).  
Specimen examined: No examined.  
Host plant: Unknown.  
Distribution: Sri Lanka.

53. *Centrotoclytus quadridens* Motschulsky  
*Centrotoclytus quadridens* Motschulsky, 1863, Bull. Soc.  
nat. Moscou, 36(1): 496 (Ceylon); Gahan, 1906, Fauna  
Brit. India, Col. 1: 308 (Ceylon).  
*Epipedocera setulosa* Chevrolat, 1863, Mém. Soc. R. Sci. de  
Liege, 18: 342 (Ceylon).  
*Plangone biseburata* Thomson, 1864, Syst. Ceramb., p. 155  
(Ceylon).  
Specimen examined: No examined.  
Host plant: Unknown.  
Distribution: Sri Lanka.

#### Tribe Thranini

54. *Thranium gibbosus* Pascoe  
*Thranium gibbosus* Pascoe, 1859, Trans. ent. Soc. Lond., (2)5:  
23 (Ceylon); Gahan, 1906, Fauna Brit. Ind., Col. 1: 237,  
fig. 89 (S. India, Ceylon).  
Specimen examined: No examined.  
Host plant: Unknown.  
Distribution: Sri Lanka, S. India.

#### Tribe Prothemini

55. *Homalomelas gracilipes* (Parry)  
*Cerambyx gracilipes* Parry, 1849, Trans. ent. Soc., 5: 184, pl.  
8, fig. 6 (Ceylon).  
*Homalomelas gracilipes*; Gahan, 1906, Fauna Brit. India,  
Col. 1: 233, fig. 87 (Ceylon).  
Specimen examined: No examined.  
Host plant: Unknown.  
Distribution: Sri Lanka.

56. *Homalomelas quadridentatus* Gahan  
*Homalomelas quadridentatus* Gahan, 1906, Fauna Brit.  
India, Col., 1: 234 (Ceylon).  
Specimen examined: No examined.  
Host plant: Unknown.  
Distribution: Sri Lanka.

57. *Homalomelas zonatus* Pascoe  
*Homalomelas zonatus* Pascoe, 1859, Trans. ent. Soc. Lond.,  
(2) 5: 23 (Ceylon); Gahan, 1906, Fauna Brit. India, Col. 1:  
234 (Ceylon).  
Specimen examined: No examined.  
Host plant: Unknown.  
Distribution: Sri Lanka.

#### Tribe Callichromini

58. *Bostrichopsebius usurpator* Holzschuh  
*Bostrichopsebius usurpator* Holzschuh, 1989, Koleopt.  
Rdsch., 59: 159, figs. 16, 17 (Ceylon).

- Specimen examined: No examined.  
Host plant: Unknown.  
Distribution: Sri Lanka.
59. *Callichromopsis telephoroides* (Westwood)  
*Cerambyx telephoroides* Westwood, 1848, Cab. Orient. Ent., p. 59, pl. 29, fig. 1 (Ceylon).  
*Callichromopsis telephoroides*: Gahan, 1906, Fauna Brit. India, Col. 1: 172, fig. 71 (Ceylon).  
Specimen examined: No examined.  
Host plant: Unknown.  
Distribution: Sri Lanka.
60. *Nothopeus cingalensis* (White)  
*Colobus cingalensis* White, 1855. Cat. Col. Brit. Mus., 8, Longic., 2: 176 (Ceylon).  
*Nothopeus cingalensis*: Gahan, 1906, Fauna Brit. India, Col. 1: 204 (Ceylon).  
Specimen examined: No examined.  
Host plant: Unknown.  
Distribution: Sri Lanka.
61. *Zonopterus diversus* Gahan  
*Zonopterus diversus* Gahan, 1906, Fauna Brit. India, Col., 1: 193 (Ceylon).  
Specimen examined: No examined.  
Host plant: Unknown.  
Distribution: Sri Lanka.
62. *Zonopterus redemanni* Nonfried  
*Zonopterus redemanni* Nonfried, 1891, Deut. ent. Zeit., 1892: 275 (Ceylon); Gahan, 1906, Fauna Brit. India, Col. 1: 192 (Ceylon).  
Specimen examined: No examined.  
Host plant: Unknown.  
Distribution: Sri Lanka.
63. *Dubianella chrysogaster* (Ritsema)  
*Callichroma chrysogaster* Ritsema, 1888, Notes Leiden Mus., 10: 195 (Ceylon).  
*Pachyteria chrysogaster*: Gahan, 1906, Fauna Brit. India, Col. 1: 197 (Ceylon).  
*Dubianella chrysogaster*: Morati & Huet, 2004, Rev. *Pachyteria*, p. 91, ph. 57 (Sri Lanka).  
Specimen examined: No examined.  
Host plant: Unknown.  
Distribution: Sri Lanka.
64. *Pachyteria fasciata* (Fabricius)  
*Cerambyx fasciatus* Fabricius, 1775, Syst. Ent., p.168 (Tranquebar).  
*Pachyteria fasciata*: Serville, 1833, Anns. ent. Soc. Fr., 2: 553 (India); Gahan, 1906, Fauna Brit. India, Col. 1: 195, Fig. 76 (Himalaya, Ranchi, Chutia Nagpur, Tranquebar, Ceylon and Siam); Gressitt & Rondon, 1970, Pac. Ins. Mon., (24): 139 (India, Ceylon and Thailand); Morati & Huet, 2004, Rev. *Pachyteria*, p. 40, ph. 8 (India, Vietnam, Cambodia, Sri Lanka, Thailand and China).  
*Pachyteria populnea*: White, 1853, Cat. Col. Brit. Mus., 7, Longic. 1: 144 (Assam) (nec Schröter, 1776).  
*Pachyteria voluptosa* Thomson, 1865, Syst. Cerambyc., p. 568 (Cambodia).  
Specimen examined: No examined.  
Host plant: Unknown.  
Distribution: Sri Lanka, India, Vietnam, Cambodia, Thailand and China.
65. *Chloridolum trogoninum* (Pascoe)  
*Callichroma trogoninum* Pascoe, 1859, Trans. ent. Soc. Lond., (2)5: 24 (Ceylon).  
*Chloridolum trogoninum*: Gahan, 1906, Fauna Brit. India, Col. 1: 199 (Ceylon).  
Specimen examined; No examined.  
Host plant: Unknown.  
Distribution: Sri Lanka.
66. *Chelidonium argentatum* (Dalman) (Pl. 2, Fig. 16)  
*Cerambyx argentatum* Dalman, 1817, Schönh. Syn. Ins., App., p. 151 (China).  
*Chelidonium argentatum*: Thomson, 1864, Syst. Ceramb., p. 176 (China); Gahan, 1906, Fauna Brit. India, Col. 1: 211 (India, China); Gressitt, 1951, Longicornia, 2: 197 (Assam, S. India, Burma, Annam and China); Duffy, 1968, Imm. Stages Orient. Timb. Beetl., 179 (Burma, China, Hainan Is., Assam and Vietnam); Gressitt & Rondon, 1970, Pac. Ins. Mon., (24): 152, Fig. 26c (India, Burma, S. China, Hainan Is. and Laos).  
Specimens examined: 2♂♂, Minipe, Kandy, 25. XI. 1975, T. Fujimura leg. (NIAES).  
Host plant: *Citrus aurantifolia*, *C. aurantium*, *C. limonia*, *C. microcarpa*, *C. reticulata* and *Fortunella margarita* (Duffy, 1968).  
Distribution: Sri Lanka (New record), India, Myanmar, Vietnam, Laos, Hainan Is. and S. China.

#### Tribe Purpuricenini

67. *Purpuricenus sanguinolentus* (Olivier) (Pl. 2, Fig. 17)  
*Cerambyx sanguinolentus* Olivier, 1795, Ent., 4(67): 93, Pl. 20, fig. 155 (E. India).  
*Philagathes sanguinolentus*; Lacordaire, 1869, Gen. Coleopt.,

9: 176, note 2 (Sunda Is. ?).

*Purpuricenus sanguinolentus*: Gahan, 1906, Fauna Brit. India, Col. 1: 184, fig. 73 (Ceylon, India); Duffy, 1968, Imm. Stages Orient. Timb. Beetl., p. 139 (Ceylon, India).

Specimens examined: 2♂♂1♀, Alut Oya, 28. IX. 1975, T. Fujimura leg. (NIAES).

Host plant: *Acacia arabica*, *Bambusa* and *Dendrocalamus strictus* (Duffy, 1968).

Distribution: Sri Lanka, India.

### Tribe Glaucytni

#### 68. *Ceylanoglaucytes moesta* (Pascoe)

*Obrium moesta* Pascoe, 1859, Trans. ent. Soc. Lond., (2)5: 20 (Ceylon).

*Iresioides moesta* Gahan, 1906, Fauna Brit. India, Col. 1: 320, fig. 107 (Ceylon).

*Glaucytes moesta*: Aurivillius, 1912, Coleoptm. Cat., Junk, 39: 437 (Ceylon).

*Ceylanoglaucytes moesta*: Breuning, 1970, Bull. Soc. ent. Mulhouse, 1970: 18 (Ceylon).

*Iresioides brunnea* Thomson, 1865, Syst. Ceramb., p. 547 (Ceylon); Gahan, 1906, Fauna Brit. India, Col. 1: 320 (Ceylon).

*Glaucytes brunnea*: Aurivillius, 1912, Coleoptm. Cat., Junk, 39: 436 (nec Thomson, 1865) (Ceylon).

Specimen examined: No examined.

Host plant: Unknown.

Distribution: Sri Lanka.

#### 69. *Ceylanoglaucytes kraatzi* (Thomson)

*Iresioides kraatzi* Thomson, 1865, Syst. Ceramb., p. 547 (Ceylon); Gahan, 1906, Fauna Brit. India, Col. 1: 321 (Ceylon).

*Glaucytes kraatzi*: Aurivillius, 1912, Coleoptm. Cat., Junk, 39: 436 (Ceylon).

*Ceylanoglaucytes kraatzi*: Breuning, 1970, Bull. Soc. ent. Mulhouse, 1970: 18, fig. 1 (Ceylon).

Specimen examined: No examined.

Host plant: Unknown.

Distribution: Sri Lanka.

### Tribe Clytini

#### 70. *Xylotrechus carenifrons* (Castelnau et Gory) (Pl. 2, Fig. 18)

*Clytus carenifrons* Castelnau et Gory, 1841, Hist. Nat. et Iconogr. des Ins. Coleopt. (Mon. du genre *Clytus*), p. 65, pl. 12, fig. 75 (Ceylon).

*Xylotrechus carinifrons* [sic] ; Chevrolat, 1863, Mém. Soc. R. Sci. de Liege, 18: 316 (Ceylon); Gahan, 1906, Fauna Brit. India, Col. 1: 243 (Ceylon); Duffy, 1968, Imm. Stages Orient. Timb. Beetl., p. 208 (Ceylon).

*Xylotrechus carenifrons*: Aurivillius, 1912, Coleoptm. Cat., Junk, 39: 365 (Ceylon).

Specimen examined: 1♂, Lahugala, Amparai District, 26. IV. 1975, A. Ohtake leg. (FFPRI).

Host plant: *Chloroxylon swietenia*, *Eugenia* and *Tectona grandis* (Duffy, 1968).

Distribution: Sri Lanka.

#### 71. *Xylotrechus subscutellatus* Chevrolat (Pl. 2, Fig. 19)

*Xylotrechus subscutellatus* Chevrolat, 1863, Mem. Soc. Sci. Liege, 18: 317 (E. India); Gahan, 1906, Fauna Brit. India, Col. 1: 242 (Ceylon, India); Duffy, 1968, Imm. Stages Orient. Timb. Beetl., p. 213 (Ceylon, India).

Specimen examined: 1♀, Sigiriya, Matale District, 10. V. 1975, A. Ohtake leg. (FFPRI).

Host plant: *Codiaeum maculata*, *Coffea arabica*, *Dalbergia latifolia*, *Kydia calycina*, *Olea dioica*, *Polyalthia coffeoides*, *Pterocarpus marsupium*, *Tectona grandis*, *Vitex altissima* and *V. pinnata* (Duffy, 1968).

Distribution: Sri Lanka, India.

#### 72. *Perissus myops* Chevrolat

*Perissus myops* Chevrolat, 1863, Mem. Soc. Sci. Liege, 18: 267 (Ceylon); Gahan, 1906, Fauna Brit. India, Col. 1: 258 (Ceylon).

Specimen examined: No examined.

Host plant: Unknown.

Distribution: Sri Lanka.

#### 73. *Perissus parvulus* Gahan (Pl. 2, Fig. 20)

*Perissus parvulus* Gahan, 1906, Fauna Brit. India, Col., 1: 258 (Ceylon); Duffy, 1968, Fauna Brit. India, Col. 1: 202 (Ceylon).

Specimen examined: 1♂, Damabulla, Matale District, 30. VIII. 1973, A. Ohtake leg. (FFPRI).

Host plant: *Cupressus lawsoniana*, *Pinus patula* (Duffy, 1968).

Distribution: Sri Lanka.

#### 74. *Rhaphuma elegantula* Gahan (Pl. 2, Fig. 21)

*Rhaphuma elegantula* Gahan, 1906, Fauna Brit. India, Col. 1: 279 (Ceylon).

Specimens examined: 1♀, Udawattekele Sanctuary, Kandy, 9. VIII. 1973, A. Ohtake leg. (FFPRI); 1♀, Udawattekele Sanctuary, Kandy, 4. IX. 1977, T. Fujimura leg. (NIAES).

Host plant: Unknown.

Distribution: Sri Lanka.

#### 75. *Rhaphuma teres* Holzschuh

*Rhaphuma teres* Holzschuh, 1989, Koleopt. Rdsch., 59: 167,

- fig. 25 (Ceylon).  
Specimen examined: No examined.  
Host plant: Unknown.  
Distribution: Sri Lanka.
76. *Clytus ceylonicus* Gardner  
*Clytus ceylonicus* Gardner, 1939, Ind. For. Rec. (N.S.), Ent., 6: 7 (Ceylon); Duffy, 1968, Imm. Stages Orient. Timb. Beetle. p. 199 (Ceylon).  
Specimen examined: No examined.  
Host plant: *Vitex altissima* (Duffy, 1968).  
Distribution: Sri Lanka.
77. *Chlorophorus annularis* (Fabricius)  
*Callidium annularis* Fabricius, 1787, Mant. Ins., 1: 156 (Siam).  
*Clytus annularis*: Fabricius, 1801, Syst. Eleuth., 2: 352.  
*Chlorophorus annularis*: Chevrolat, 1863, Mém. Soc. R. Sci. Liege, 18: 290; Duffy, 1968, Imm. Stages Orient. Timb. Beetl., p. 193 (East, South East and South Asia, Australia, Micronesia and Hawaii Is.).  
*Clytanthus annularis*: Bates, 1873, Annls. Mag. nat. Hist., (4)12: 16 (Japan).  
*Caloclytus annularis*: Gahan, 1906, Fauna Brit. India, Col. 1: 261 (India, Burma, Siam, these extending to China and Japan, and southwards through the Malay Peninsula and Archipelago to New Guinea).  
*Rhaphuma annularis*: Ohbayashi, 1963, Fragment. coleopt., (3): 11 (Japan).  
*Callidium bidens* Wever, 1801, Obs. ent., p. 90 (East Indies).  
Specimen examined: No examined.  
Host plant: *Bambusa*, *Citrus*, *Dendrocalamus strictus*, *Dipterocarpus tuberculatus*, *Gossypium*, *Liquidambar formosana*, *Phyllostachys reticulata*, *Pyrus malus*, *Shorea robusta*, *Sinocalamus*, *Sinobambusa gibbosa*, *Spondias*, *Tectona grandis* and *Vitis* (Duffy, 1968).  
Distribution: Sri Lanka, South East and South Asia, PNG, Australia, Micronesia and Hawaii Is.
78. *Chlorophorus cingalensis* (Gahan)  
*Caloclytus cingalensis* Gahan, 1906, Fauna Brit. India, Col., 1: 268 (Ceylon).  
*Chlorophorus cingalensis*: Aurivillius, 1912, Coleoptm. Cat., Junk, 39: 403 (Ceylon).  
Specimen examined: No examined.  
Host plant: Unknown.  
Distribution: Sri Lanka.
79. *Chlorophorus melancholicus* (Chevrolat) (Pl. 20, Fig. 22)  
*Anthoboscus melancholicus* Chevrolat, 1863, Mem. Soc. Sci. Liege, 18: 299 (Ceylon).  
*Caloclytus melancholicus*: Gahan, 1906, Fauna Brit. India, Col. 1: 266 (Ceylon).  
*Chlorophorus melancholicus*: Aurivillius, 1912, Coleoptm. Cat., Junk, 39: 403 (Ceylon).  
Specimen examined: 1♂, near Sigiriya, Matale District, 11. V. 1975, A. Ohtake leg. (FFPRI).  
Host plant: Unknown.  
Distribution: Sri Lanka.
80. *Chlorophorus moestus* (Chevrolat) (Pl. 20, Fig. 23)  
*Anthoboscus moestus* Chevrolat, 1863, Mem. Soc. Sci. Liege, 18: 300 (Ceylon).  
*Caloclytus moestus*: Gahan, 1906, Fauna Brit. India, Col. 1: 266 (Ceylon).  
*Chlorophorus moestus*: Aurivillius, 1912, Coleoptm. Cat., Junk, 39: 403 (Ceylon).  
Specimens examined: 1♂1♀, Sigiriya, Matale District, 1. I. 1999, T. Kawashita leg. (FFPRI).  
Host plant: Unknown.  
Distribution: Sri Lanka.
81. *Chlorophorus sagittarius* (Gahan)  
*Caloclytus sagittarius* Gahan, 1906, Fauna Brit. India, Col., 1: 261 (Ceylon).  
*Chlorophorus Sagittarius*: Aurivillius, 1912, Coleoptm. Cat., Junk, 39: 404 (Ceylon).  
Specimen examined: No examined.  
Host plant: Unknown.  
Distribution: Sri Lanka.
82. *Demonax ascendens* (Pascoe)  
*Clytus ascendens* Pascoe, 1859, Trans. ent. Soc. Lond., (2)5: 27 (E. India).  
*Demonax ascendans*: Gahan, 1906, Fauna Brit. India, Col. 1: 296 (India, Ceylon); Duffy, 1968, Imm. Stages Orient. Timb. Beetl., p. 215 (Ceylon, India).  
*Rhaphuma geniculata* Chevrolat, 1863, Mém. Soc. R. Sci. Liege, 18: 280 (Ceylon).  
Specimen examined: No examined.  
Host plant: *Shorea robusta* (Duffy, 1968).  
Distribution: Sri Lanka, India.
83. *Demonax decorus* Gahan (Pl. 2, Fig. 24)  
*Demonax decorus* Gahan, 1906, Fauna Brit. India, Col. 1: 298 (S. India).  
Specimen examined: 1♂, near Alut Oya, Polonnaruwa District, 17. V. 1975, A. Ohtake leg. (FFPRI).  
Host plant: Unknown.  
Distribution: Sri Lanka (New record), S. India.

84. *Demonax divisus* Chevrolat (Pl. 2, Fig. 25)

*Demonax divisus* Chevrolat, 1863, Mem. Soc. Sci. Liege, 18: 271 (S. India); Gahan, 1906, Fauna Brit. India, Col. 1: 295 (S. India).

Specimens examined: 1♀, Kandy, 5. V. 1975, A. Ohtake leg. (FFPRI); 1♂, 11. V. 1975, Hills, South of the Lake, Kandy, 11. V. 1975, A. Ohtake leg. (FFPRI).

Host plant: Unknown.

Distribution: Sri Lanka (New record), S. India.

85. *Demonax olemehli* Holzschuh

*Demonax olemehli* Holzschuh, 1989, Koleopt. Rdsch., 59: 168, fig. 26 (Ceylon).

Specimen examined: No examined.

Host plant: Unknown.

Distribution: Sri Lanka.

86. *Demonax walkeri* (Pascoe) (Pl. 2, Fig. 26)

*Clytus walkeri* Pascoe, 1859, Trans. ent. Soc. Lond., (2) 5: 27 (Ceylon).

*Demonax walkeri*: Gahan, 1906, Fauna Brit. India, Col. 1: 289 (Ceylon).

Specimen examined: 1♀, Mt. Pudurutalanga, Nuwaraeliya District, 25. IV. 1975, A. Ohtake leg. (FFPRI)

Host plant: Unknown.

Distribution: Sri Lanka.

#### Acknowledgement

The present checklist could not have been completed without supports and cooperation of the following persons. We would like to express our sincere thanks to S. YOSHIMATSU of National Institute of Agro-Environmental Science for grant permission of surveying of FUJIMURA Collection, and T. KAWASHITA of Yokohama Plant Protection Station, Ministry of Agriculture, Forestry and Fisheries, Japan for donation of the valuable specimens. Our thanks are also due to T. TOMA, Mses A. IMAI, A. TSUBOKAWA and Y. KINOTO of FFPRI for their supports in the study.

#### References

- Beeson, C. F. C. and Bhatia, R. M. (1939) On the biology of the Cerambycidae (Coleopt.), Ind. For. Rec., 5(1), 1-235, figs. 1-17, pls. I-VIII.
- Breuning, S. (1970) Révision des Glaucyteni de la région asiato-ausralienne (COL. CERAMBYCIDAE), Bull. Soc. ent. Mulhouse, 1970, 17-30, figs. 1-9.
- Duffy, E. A. J. (1968) A monograph of the immature stages of Oriental Timber Beetles (Cerambycidae), 414 p., 198

figs., 18 pls., Brit. Mus. (Nat. Hist.).

Gahan, C. J. (1906) The Fauna of British India, including Ceylon and Burma. Coleoptera.—Vo. 1. (Cerambycidae), 329pp., 107 figs.

Gressitt, J. L. (1951) Longicorn beetles of China, Longicornia, 2, 667 pp., 22 pls.

Komiya, Z. (2003) Notes on the Genus *Baralipton* (Coleoptera, Cerambycidae), with description of a new species, Elytra, Tokyo, 31, 43-54, figs. 1-11.

Komiya, Z. and Drumont, A. (2007) A synopsis of the Prioninae Genus *Spinimegopsis* stat. nov. (Coleoptera, Cerambycidae, Prioninae), Elytra, Tolyo, 35: 345-384.

Lameere, A. (1913) Cerambycidae: Prioninae. In Junk, W. & Schenkling, S. (eds.), Coleopterm. Cat., 52, 108 pp., W. Junk, Berlin.

Lameere, A. (1919) Coleoptera Longicornia, Fam. Cerambycidae, Subfam. Prioninae. In Wytzman, P. (ed.), Genera Ins., 189pp., 8 pls., Desmet-Vertenneuil, Bruxelles.

Makihara, H. (1999) Atlas of longicorn beetles in Bukit Soeharto Education Forest, Mulawarman Univ., East Kalimantan, Indonesia. PUSREHUT Sp. Public., (7), 140 pp.

Morati, J. and Huet, M. (2004) Revision du genre *Pachyteria*, 145 pp., Megallanes, Paris.

Quentin, R. M. & Villiers, A. (1981) Les Macrotomini de L'Ancien Monde (Région Éthiopienne Exclue) Genre et Catalogue Raisonné [Col. Cerambycidae Prioninae], Anns. Soc. ent. Fr. (N. S.), 17, 359-393, 76 figs.

Thomson, J. (1864) Syst. Ceramb., 19, 540pp.

White, J. (1853) Catalogue of the Coleopterous insects in the Collection of the British Museum, part 7, Longicornia, 1, 1-174.

White, J. (1855) Catalogue of the Coleopterous insects in the Collection of the British Museum, part 8, Longicornia, 2, 175-412.



1. *Rhapsipodus taprobanicus*  
Gahan  
♀ 61mm



2. *Anomophysis spinosa*  
(Fabricius)  
♂ 51mm



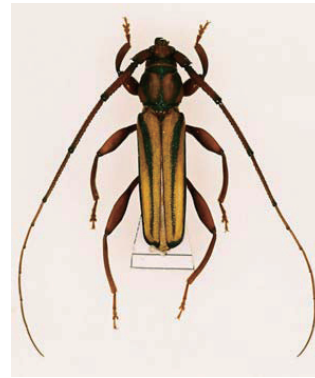
3. *Megopsis (Megopsis) terminalis*  
(Gahan)  
♂ 26mm



4. *Spinimegopsis cingalensis*  
(White)  
♂ 27mm



5. *Prionomma atratum*  
(Gmelin)  
♂ ♀ 45mm



6. *Xystrocera globosa*  
(Olivier)  
♂ 25mm



7. *Gnatholea simplex*  
Gahan  
♂ 18.5mm ♀ 23.2mm



8. *Diorthus cinereus*  
(Fabricius)  
♂ 28mm



9. *Dymasius machilentus*  
(Pascoe)  
♂ 21mm



Plate 1. Longicorn beetle s of Sri Lanka Fig. 1-9.



10. *Dymasium minor*  
Gahan  
♀ 14mm

11. *Xoanodera amoena*  
Pascoe  
♀ 22mm

12. *Ceresium flavipes*  
(Fabricius)  
♀ 15mm

13. *Ceresium gracile*  
(Perroud)  
♂ 8.6mm



14. *Ceresium nilgriense*  
Gahan  
♂ 12mm

15. *Ceresium zeylanicum*  
White  
♂ 12.5mm

16. *Chelidonium argentatum*  
(Dalman)  
♂ 25mm

17. *Purpuricenus sanguinolentus*  
(Olivier)  
♂ 21mm ♀ 18mm



18. *Xylotrechus carenifrons*  
(Castelnau et Gory)  
♂ 9.4mm

19. *Xylotrechus subscutellatus*  
Chevrolat  
♀ 9.8mm

20. *Perissus parvulus*  
Gahan  
♂ 7.1mm

21. *Rhapsoma elegantula*  
Gahan  
♀ 4.6mm

22. *Chlorophorus melancholicus*  
Chevrolat  
♂ 10mm



23. *Chlorophorus moestus*  
(Chevrolat)  
♂ 7.5mm ♀ 11.4mm

24. *Demonax decorus*  
Gahan  
♂ 8.5mm

25. *Demonax divisus*  
Chevrolat  
♀ 8.5mm

26. *Demonax walkeri*  
Pascoe  
♀ 10.6mm

Plate 2. Longicorn beetle s of Sri Lanka Fig. 10-26.1

# スリランカのカミキリムシ類のチェックリスト (1) ムカシカミキリムシ科およびフトカミキリ亜科を除くカミキリムシ科

楨原 寛<sup>1)\*</sup>・アマーニ・マンナカラ<sup>2)</sup>・藤村 俊彦<sup>3)</sup>・大竹 昭郎<sup>4)</sup>

## 要旨

スリランカのカミキリムシ研究に役立たせるために、カミキリムシ科のフトカミキリ亜科を除くカミキリムシ類のチェックリストを作成した。このリストは共著者の藤村、大竹の採集品と過去のスリランカカミキリ研究資料を併せて編集した。86種のカミキリムシ類をリストアップしたが、これには、26種のカラー写真、これまで知られてきた食樹と詳しい分布記録も併記した。86種の内訳はムカシカミキリムシ科が1種、カミキリムシ科のノコギリカミキリ亜科9種、ハナカミキリ亜科1種、カミキリ亜科75種であり、スリランカ初記録となる5種が含まれている。

キーワード：カミキリムシ、チェックリスト、森林昆虫、スリランカ

---

1) 森林総合研究所昆虫研究領域

2) Forest Research Center, Kumbalipola, Boyagane, Kurenegala, Sri Lanka

3) 沖縄県石垣市在住

4) 京都府京都市在住

\* 森林総合研究所昆虫研究領域 〒305-8687 茨城県つくば市松の里1 e-mail: makihara@ffpri.affrc.go.jp