



PLATE XXIII.
A typical seine net catch at Bulisa, Lake Albert.

[Photo by B. G. Kinloch.]



PLATE XXIV.
Hauling a seine net at Bulisa, Lake Albert.

[Photo by B. G. Kinloch.]

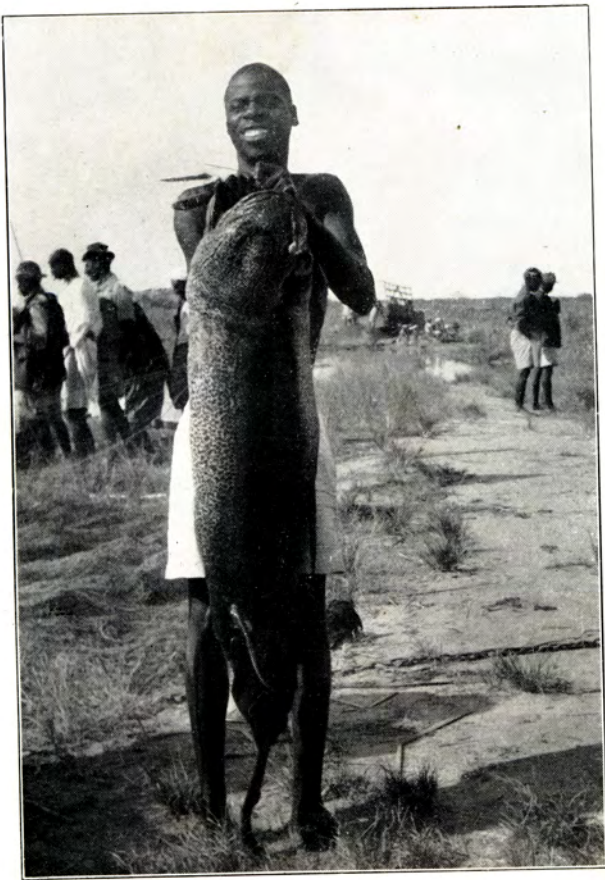


PLATE XXV.

A big lung-fish (*Protopterus aethiopicus*), weight 46 lb., caught on a long line at Lwampanga, Lake Kyoga, by a Muruli fisherman.
[Photo by D. H. Rhodes.]



PLATE XXVI.

Dug-out canoes at Bukungu in Busoga manned by Baruli and Bakenyi fishermen.
[Photo by D. H. Rhodes.]



PLATE XXVII.

Species of fish caught in seine nets on Lake Albert.

From top to bottom:—

- (a) Left hand row.—(1) Bubu (*Auchinoglanis occidentalis*), (2) Kisinja (*Barbus bynni*), (3) Ngege (*Tilapia nilotica*—a large specimen of 3½ lb.), (4) Semutundu (*Bagrus docmac*).
- (b) Right hand row.—(1) Ngassa or Tiger-fish (*Hydrocyon forskalii*), (2) Ngara (*Alestes baremose*), (3) Ngege (*Tilapia galilea*).

[Photo by B. G. Kinloch.



PLATE XXVIII.

Species of fish caught in seine nets on Lake Albert.

From left to right:—

- (1) Wachone (*Distichodus niloticus*—a 9 lb. specimen).
 (2) Waraga (*Alestes macrolepidotus*).
 (3) Mputa or Nile Perch—(*Lates albertianus*—a very small specimen).
 (4) Wahrindi (*Synodontis schall*).
 (5) Karuka (*Labeo horie*—a large specimen of 3½ lb.).

[Photo by B. G. Kinloch.



PLATE XXIX.
Women fishing in Lango.

[Photo by J. B. Heppes.]



PLATE XXX.
Collection of indigenous fishing equipment from the Lake Kyoga area—For description see para. 474.

[Photo by B. G. Kinloch.]



PLATE XXXI.

Fish traps set in a river in Lango.

[Photo by J. B. Heppes.]



PLATE XXXII.

The same traps removed after use.

[Photo by J. B. Heppes.]

QUANTITIES AND VALUES OF DRIED (SALTED) AND SMOKED FISH EXPORTED FROM LAKES EDWARD, GEORGE AND ASSOCIATED FISHERIES—1951.

Month	Weight						TOTAL	Value						TOTAL	
	Dried (salted)			Smoked				Dried (salted)			Smoked				
	Tons	cwt.	lb.	Tons	cwt.	lb.	Tons	cwt.	lb.	£	s.	£	s.	£	s.
January	126	17	92	34	17	15	161	14	107	7,595	7	£ 382	3	7,977	10
February	99	2	44	57	7	6	156	9	50	6,707	3	6,255	2	12,962	5
March	96	6	13	42	8	4	138	14	17	6,562	14	5,467	12	12,030	6
April	101	0	82	58	1	43	159	2	13	7,583	3	7,485	0	15,068	3
May	151	8	70	52	15	92	204	4	50	12,025	18	7,567	7	19,593	5
June	108	16	74	49	15	1	158	11	75	9,068	0	7,085	0	16,153	0
July	85	17	46	27	10	47	113	7	93	7,300	6	4,065	6	11,365	12
August	79	3	47	29	8	10	108	11	57	6,788	10	4,391	16	11,180	6
September	98	6	28	42	15	0	141	1	28	9,034	4	6,430	3	15,464	7
October	149	17	59	45	2	21	194	19	80	14,197	15	6,904	19	21,102	14
November	133	17	50	63	1	103	196	19	41	16,373	8	9,907	17	26,281	5
December	103	10	68	37	1	26	140	11	94	13,825	11	6,022	1	19,847	12
GRAND TOTALS	1,334	5	1	540	3	32	1,874	8	33	117,061	19	71,964	6	189,026	5

The average monthly value of these exports is £15,752, which is an increase of nearly 135% since 1949.