



Department of  
Primary Industries and  
Regional Development

Protect  
Grow  
Innovate

# Recreational fishing identification guide



Published August 2023

Cover: Mahi mahi *Coryphaena* spp

Published by the Department of Primary Industries and Regional Development, Perth, Western Australia.

Fisheries Occasional Publication No. 103, 8th edition, August 2023

ISSN: 1447–2058 (Print) ISBN: 978-1-921845-16-1 (Print)

ISSN: 2206–0928 (Online) ISBN: 978-1-921845-17-8 (Online)

**[library.dpird.wa.gov.au/fr\\_fop/37/](http://library.dpird.wa.gov.au/fr_fop/37/)**

# Contents

About this guide.....	2
Offshore demersal.....	4
Inshore demersal.....	5
Nearshore.....	13
Estuarine .....	20
Pelagic.....	21
Sharks .....	24
Crustaceans .....	27
Molluscs.....	29
Freshwater.....	30
Index of common names.....	32

# About this guide

Throughout this guide you will see all or some of the marine bioregion symbols with each fish illustration, indicating where the species is most likely to occur.

**NC** North Coast

**GC** Gascoyne Coast

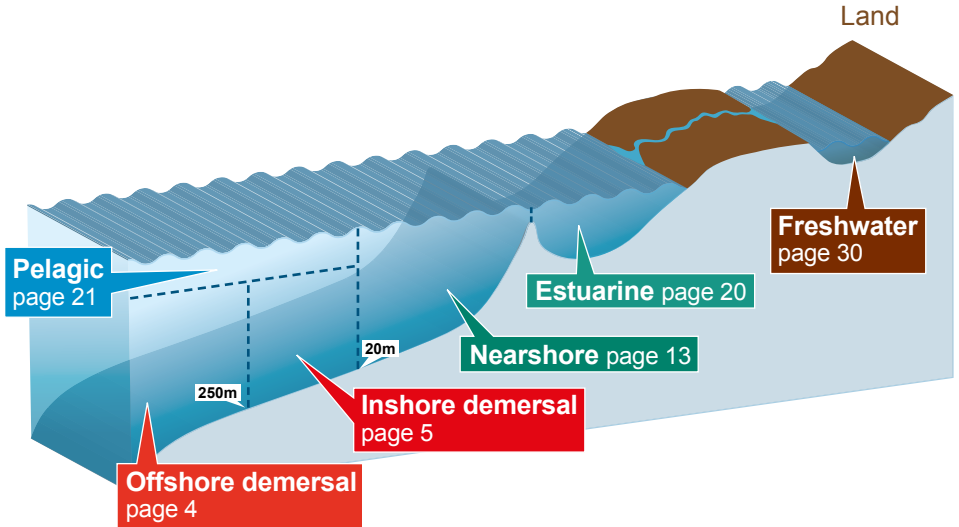
**WC** West Coast

**SC** South Coast

Freshwater species inhabit the inland bioregions, which are shown on the map on page 30.



Six broad ecological depth-based habitats are recognised within each bioregion. Finfish species are listed in the habitat where they most commonly occur. Sharks and crustaceans are presented separately as they may occupy many habitats.



This guide has been developed to help you identify the more common species in Western Australia that you may encounter. The purpose of this guide is to enhance consistent and accurate species identification.

If you are unsure about a particular species (or if it is not in this guide), please discuss it with a representative of the Department of Primary Industries and Regional Development, Western Australia. You can access additional information from [dpird.wa.gov.au](http://dpird.wa.gov.au)

# Offshore demersal



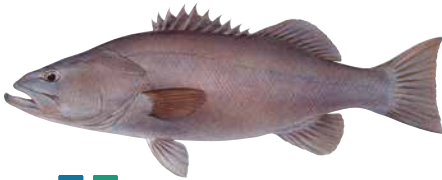
NC GC WC SC

**Greybanded grouper**  
*Hyporthodus griseofasciatus*



GC WC SC

**Blue-eye trevalla**  
*Hyperoglyphe antarctica*



WC SC

**Hapuku**  
*Polyprion oxygeneios*



NC GC WC

**Ruby snapper**  
*Etelis boweni*



GC WC SC

**Bass groper**  
*Polyprion americanus*

Juvenile



NC GC WC

**Flame snapper**  
*Etelis coruscans*

# Inshore demersal



GC WC SC

Juvenile

**Pink snapper**  
(Snapper, pinkie)  
*Chrysophrys auratus*



GC WC SC

Juvenile

**West Australian dhufish**  
(Dhuie)  
*Glaucosoma hebraicum*



WC SC

**Bight redfish**  
(Red snapper, nannygai)  
*Centroberyx gerrardi*



NC GC

**Northern pearl perch**  
*Glaucosoma buergeri*



GC WC SC

**Yelloweye redfish**  
*Centroberyx australis*



WC SC

**Foxfish**  
(Western foxfish)  
*Bodianus frenchii*



WC SC

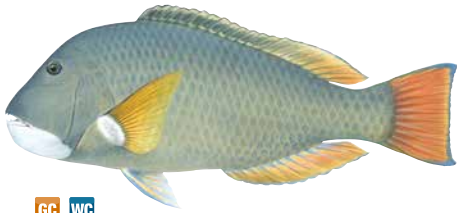
**Swallowtail**  
*Centroberyx lineatus*



NC GC

**Sunburnt pigfish**  
*Bodianus solatus*

Inshore demersal (continued)



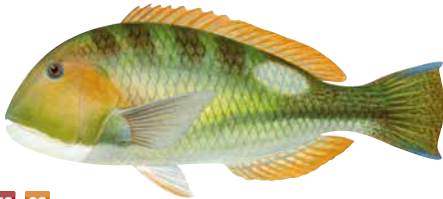
GC WC

**Baldchin groper  
(Baldie)**  
*Choerodon rubescens*



NC GC

**Blackspot tuskfish  
(Bluebone)**  
*Choerodon schoenleinii*



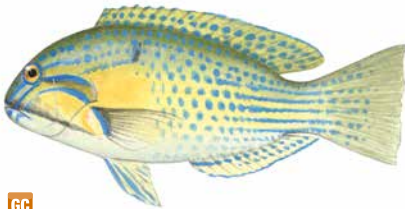
NC GC

**Blue tuskfish  
(Bluebone)**  
*Choerodon cyanodus*



NC GC WC

**Bluebarred parrotfish**  
*Scarus ghobban*



NC GC

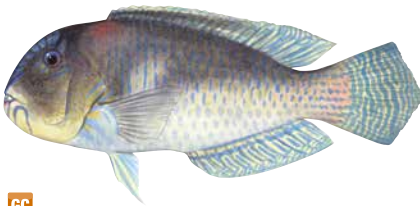
**Bluespotted tuskfish**  
*Choerodon cauteroma*



WC SC

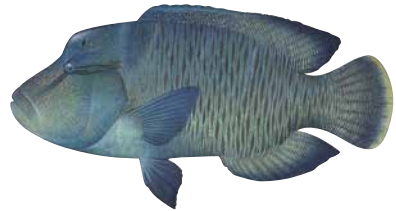
Juvenile

**Western blue groper**  
*Achoerodus gouldii*



NC GC

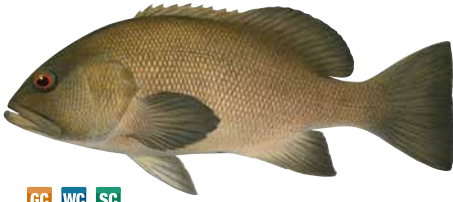
**Purple tuskfish  
(Grass tuskfish, bluebone)**  
*Choerodon cephalotes*



NC

**Humphead maori wrasse**  
PROTECTED SPECIES  
*Cheilinus undulatus*





GC WC SC

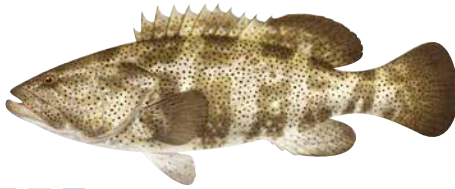
**Breaksea cod**  
(Black arse snapper)  
*Epinephelus armatus*



NC GC WC

**Rankin cod**  
(Whitespotted rockcod)  
*Epinephelus rankini*

Juvenile



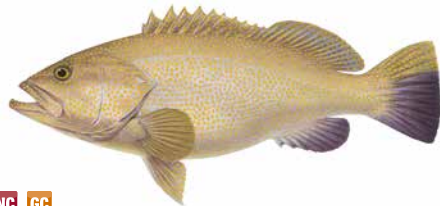
NC GC WC

**Blackspotted rockcod**  
(Malabar cod, estuary cod, slimy cod)  
*Epinephelus malabaricus*



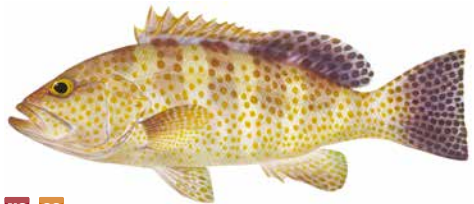
NC GC WC

**Goldspotted rockcod**  
(Estuary cod, slimy cod, greasy grouper)  
*Epinephelus coioides*



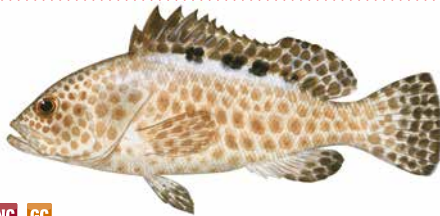
NC GC

**Duskytail grouper**  
(Spotted trout, trout cod)  
*Epinephelus bleekeri*



NC GC

**Yellowspotted rockcod**  
(Spotted cod, honeycomb cod)  
*Epinephelus areolatus*



NC GC

**Frostback rockcod**  
(Spotted cod, honeycomb cod,  
frostback cod)  
*Epinephelus bilobatus*



NC GC WC

**Tomato rockcod**  
*Cephalopholis sonnerati*

Inshore demersal (continued)



WC SC

**Harlequin fish**

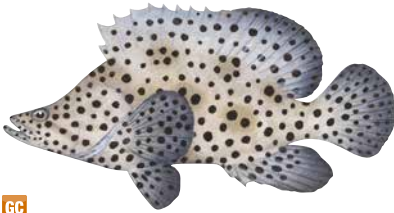
*Othos dentex*



NC GC

**Barcheek coral trout**

(Inshore coral trout)  
*Plectropomus maculatus*



NC GC

**Barramundi cod**

*Cromileptes altivelis*



NC GC WC

**Common coral trout**

(Leopard coral trout)  
*Plectropomus leopardus*



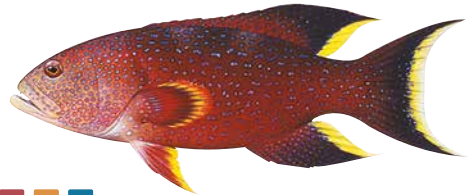
NC GC

**Potato rockcod**

PROTECTED SPECIES

(Potato cod)

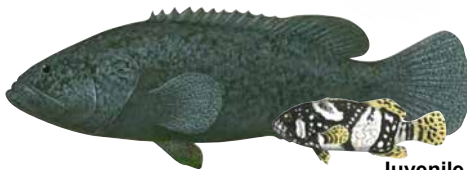
*Epinephelus tukula*



NC GC WC

**Yellowedge coronation trout**

(Coronation trout, lunartail trout)  
*Variola louti*



NC GC WC

**Queensland grouper**

PROTECTED SPECIES

(Giant grouper, Queensland grouper)

*Epinephelus lanceolatus*

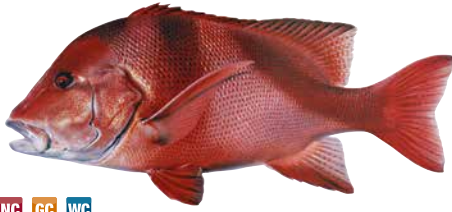


NC GC

**Chinamanfish**

(Chinaman)

*Symphorus nematophorus*



NC GC WC

**Red emperor**  
**(Reds)**  
*Lutjanus sebae*



NC GC WC

**Mangrove Jack**  
**(Jacks)**  
*Lutjanus argentimaculatus*



NC GC

**Crimson snapper**  
**(Crimson seaperch, red snapper)**  
*Lutjanus erythropterus*



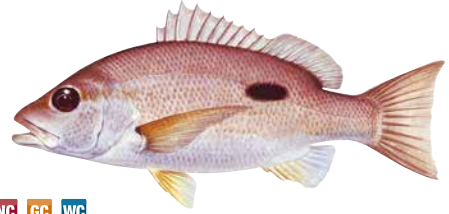
NC GC WC

**Darktail snapper**  
**(Maroon seaperch, dark tailed seaperch)**  
*Lutjanus lemniscatus* **Juvenile**



NC GC

**Saddletail snapper**  
**(Scarlet seaperch)**  
*Lutjanus malabaricus*



NC GC WC

**Moses' snapper**  
**(Moses' perch, fingermark bream)**  
*Lutjanus russellii*



NC

**Golden snapper**  
**(Fingermark seaperch, fingermark bream)**  
*Lutjanus johnii*

Inshore demersal (continued)



NC GC WC

**Stripey snapper**  
(Spanish flag, stripey seaperch)  
*Lutjanus carponotatus*



NC GC WC

**Goldband snapper**  
*Pristipomoides multidentus*



NC GC WC

**Brownstripe snapper**  
(Flagfish)  
*Lutjanus vitta*



NC GC WC

**Rosy snapper**  
(Rosy jobfish, crimson jobfish)  
*Pristipomoides filamentosus*



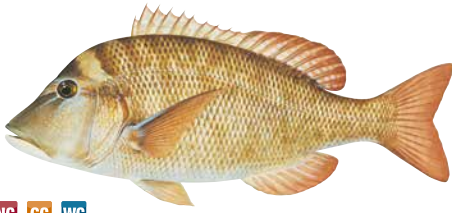
NC GC

**Maori snapper**  
(Maori seaperch)  
*Lutjanus rivulatus*



NC GC WC

**Sharptooth snapper**  
(Sharptooth jobfish)  
*Pristipomoides typus*



NC GC WC

**Grass emperor**  
(Black snapper, blue-lined emperor,  
grass snapper, tricky snapper)

*Lethrinus laticaudis*



NC GC WC

**Spangled emperor**

*Lethrinus nebulosus*



NC GC WC

**Bluespotted emperor**  
(Lesser spangled emperor)

*Lethrinus punctulatus*



NC GC WC

**Redthroat emperor**  
(Sweetlip emperor)

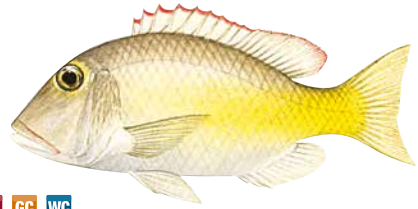
*Lethrinus miniatus*



NC GC

**Longnose emperor**  
(Long-nosed emperor)

*Lethrinus olivaceus*



NC GC WC

**Yellowtail emperor**

*Lethrinus atkinsoni*



NC GC

**Redspot emperor**  
(Pink-eared emperor)

*Lethrinus lentjan*



NC GC WC

**Robinson's seabream**  
(Robinson's bream, Robinson's perch)

*Gymnocranius grandoculis*

Inshore demersal (continued)



WC SC

**Blue morwong**  
(Queen snapper)  
*Nemadactylus valenciennesi*



NC GC WC

**Painted sweetlips**  
(Slatey bream, sweetlip)  
*Diagramma labiosum*



GC WC SC

**Sergeant baker**  
*Aulopus purpurissatus*



NC GC

**Rosy threadfin bream**  
*Nemipterus furcosus*



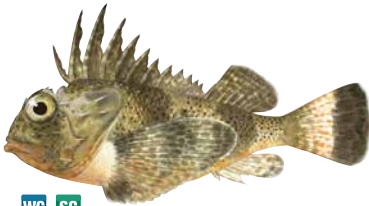
GC WC SC

**Sea sweep**  
*Scorpis aequipinnis*



NC GC WC

**Frypan bream**  
*Argyrops notialis*



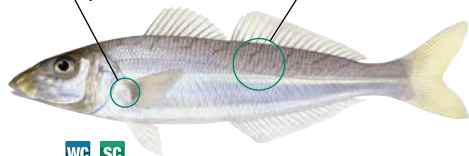
WC SC

**Bighead gurnard perch**  
(Gurnard perch)  
*Neosebastes pandus*

# Nearshore

No dot markings on base of pectoral fin

Faint or no bars



WC SC

**Southern school whiting**  
(Sand whiting, school whiting)  
*Sillago bassensis*



WC SC

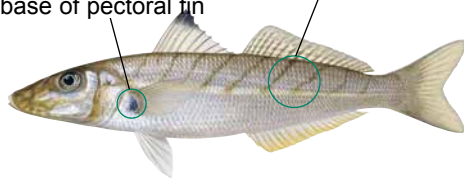
**King George whiting**  
*Sillaginodes punctatus*



Dot markings on base of pectoral fin



Well defined bars



GC WC

**Western school whiting**  
(Sand whiting, school whiting)  
*Sillago vittata*



NC GC WC

**Western trumpeter whiting**  
*Sillago burrus*



NC GC

**Goldenline whiting**  
(Golden-lined whiting)  
*Sillago analis*



GC WC SC

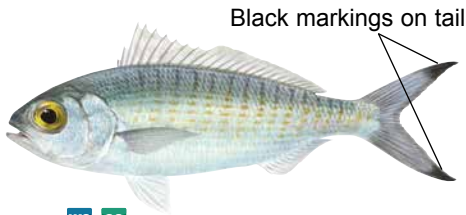
**Yellowfin whiting**  
(Sand whiting, silver whiting)  
*Sillago schomburgkii*



GC WC SC

**Yellowtail scad**  
(Yellowtail, yellowtail horse mackerel)  
*Trachurus novaezelandiae*

Nearshore (continued)



WC SC

**Australian herring**  
(Herring, tommy ruff)  
*Arripis georgianus*



GC WC SC

**Tailor**  
(Chopper – small tailor)  
*Pomatomus saltatrix*



WC SC

**Western Australian salmon**  
(Salmon)  
*Arripis truttaceus*



WC SC

**Snook**  
*Sphyraena novaehollandiae*



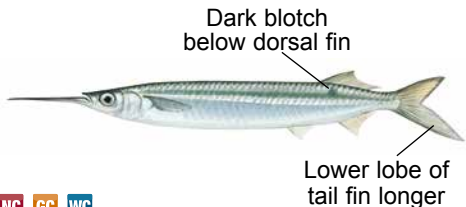
WC SC

**Southern garfish**  
(Gardie, southern sea garfish)  
*Hyporhamphus melanochir*



NC GC WC SC

**Yellowtail barracuda**  
(Pike, striped seapike)  
*Sphyraena obtusata*



NC GC WC

**Three-by-two garfish**  
(Robust garfish, storm garfish)  
*Hemiramphus robustus*



NC GC WC

**Longtom**  
Family Belontiidae



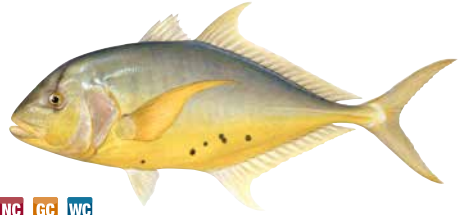


GC WC SC

**Silver trevally (Skipjack, skippy)**

*Pseudocaranx* spp

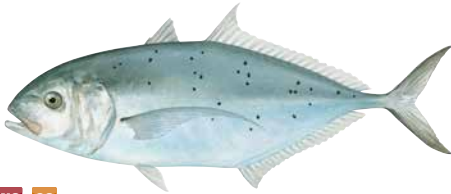
This includes the smaller sand trevally (*P. wrighti*)



NC GC WC

**Golden trevally  
(Banded trevally)**

*Gnathanodon speciosus*



NC GC

**Bludger trevally**

*Carangoides gymnostethus*



NC GC WC

**Giant trevally  
(GT)**

*Caranx ignobilis*



NC GC WC

**Turrum  
(Goldspotted trevally)**

*Carangoides fulvoguttatus*



NC GC

**Queenfish  
(Queenie)**

*Scomberoides* spp



GC WC

**Common dart**

*Trachinotus botla*



NC GC WC

**Chinaman rockcod  
(Charlie court)**

*Epinephelus rivulatus*

Nearshore (continued)



GC WC SC

**Blue mackerel**  
(Slimey mackerel, common mackerel)  
*Scomber australasicus*



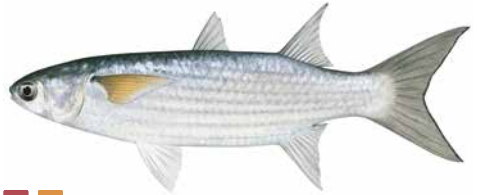
NC GC WC SC

**Sea mullet**  
(Mullet)  
*Mugil cephalus*



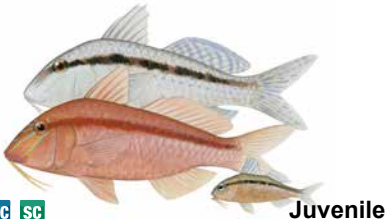
GC WC SC

**Oriental bonito**  
*Sarda orientalis*



NC GC

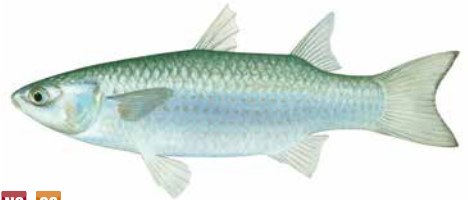
**Bluetail mullet**  
*Valamugil buchanani*



WC SC

**Bluespotted goatfish**  
(Red mullet)  
*Upeneichthys vlamingii*

Juvenile



NC GC

**Greenback mullet**  
*Liza subviridis*



WC SC

**Yelloweye mullet**  
(Pilch, yellow-eyed mullet)  
*Aldrichetta forsteri*



NC GC

**Diamondscale mullet**  
*Liza vaigiensis*



Male

Female

GC WC SC

**Western King wrasse**

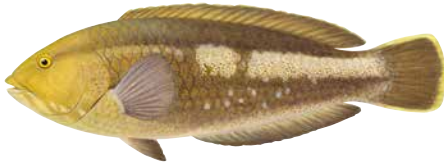
*Coris auricularis*



WC SC

**Banded sweep**

*Scorpis georgiana*



GC WC SC

**Brownspeckled wrasse**

*Notolabrus parilus*



NC GC WC

**Western butterflyfish  
(Butterfish, buttery)**

*Pentapodus vitta*



WC SC

**Southern maori wrasse**

*Ophthalmolepis lineolatus*



NC GC WC SC

**Western striped grunter  
(Trumpeter, striped trumpeter)**

*Pelates octolineatus*



NC GC WC

**Tripletail**

*Lobotes surinamensis*



WC SC

**Sea trumpeter**

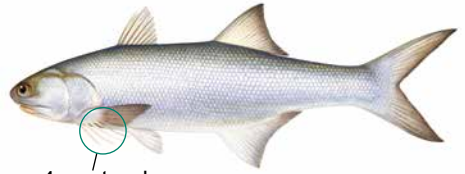
*Pelsartia humeralis*

Nearshore (continued)



GC WC SC

**Mulloway**  
(River kingfish)  
*Argyrosomus japonicus*



NC

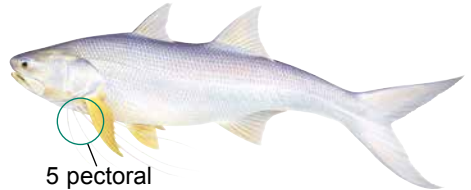
4 pectoral filaments

**Blue threadfin**  
(Bluenose threadfin salmon, blue salmon)  
*Eleutheronema tetradactylum*



NC

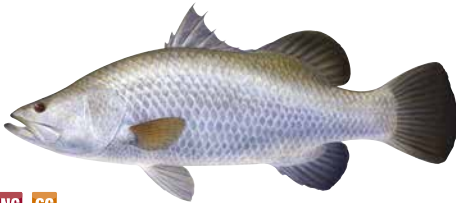
**Black jewfish**  
(Northern mulloway)  
*Protonibea diacanthus*



NC

5 pectoral filaments

**King threadfin**  
(Giant threadfin salmon, giant threadfin)  
*Polydactylus macrochir*



NC GC

**Barramundi**  
*Lates calcarifer*



NC GC

**Barred javelin**  
(Spotted javelinfish)  
*Pomadasyds kaakan*



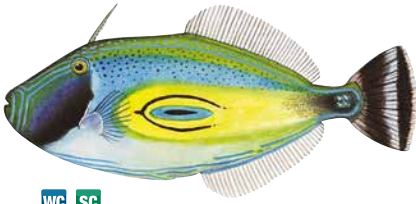
NC GC WC

**Giant sea catfish**  
(Giant salmon catfish)  
*Arius thalassinus*



NC GC

**Blotched javelin**  
(Blotched javelinfish)  
*Pomadasyds maculatus*



WC SC

**Horseshoe leatherjacket**

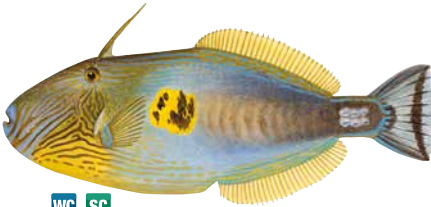
*Meuschenia hippocrepis*



NC

**Northwest black bream  
(Pikey bream)**

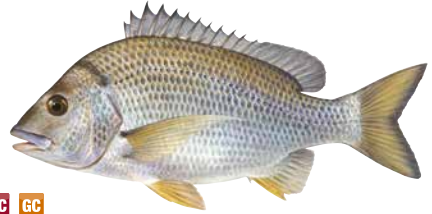
*Acanthopagrus palmaris*



WC SC

**Sixspine leatherjacket  
(Reef leatherjacket)**

*Meuschenia freycineti*



NC GC

**Western yellowfin bream  
(Yellowfin bream)**

*Acanthopagrus morrisoni*



NC GC WC SC

**Silver toadfish  
POISONOUS  
(North-West blowfish)**

*Lagocephalus sceleratus*



GC WC SC

**Weeping toadfish  
POISONOUS  
(Blowie, pufferfish, common blowfish)**

*Torquigener pleurogramma*

# Estuarine



WC SC

**Black bream**  
*Acanthopagrus butcheri*



NC GC WC

**Yellowtail flathead  
(Bartailed flathead)**  
*Platycephalus westraliae*



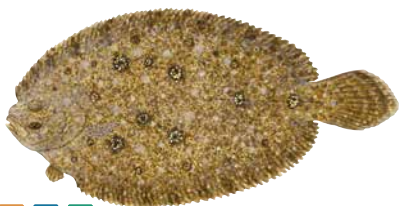
GC WC SC

**Tarwhine  
(Silver bream)**  
*Rhabdosargus sarba*



NC GC

**Northern sand flathead  
(Sand flathead, flag tailed flathead)**  
*Platycephalus endrachtensis*



NC GC WC SC

**Smalltooth flounder**  
*Pseudorhombus jenynsii*



WC SC

**Southern bluespotted flathead  
(Bluespotted flathead, southern flathead)**  
*Platycephalus speculator*



NC GC

**Largetooth flounder**  
*Pseudorhombus arsius*



WC SC

**Estuary cobbler  
(Cobbler)**  
*Cnidogobius macrocephalus*

# Pelagic



GC WC SC

**Samsonfish**  
*Seriola hippos*

Juvenile



NC GC WC SC

**Southern bluefin tuna**  
*Thunnus maccoyii*



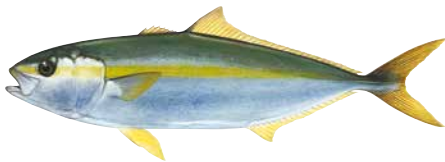
NC GC WC

**Amberjack**  
*Seriola dumerili*



NC GC WC

**Longtail tuna**  
*Thunnus tonggol*



GC WC SC

**Yellowtail kingfish**  
(Kingfish, kingie)  
*Seriola lalandi*



NC GC WC

**Yellowfin tuna**  
*Thunnus albacares*



NC

**Dogtooth tuna**  
(Doggie)  
*Gymnosarda unicolor*

Pelagic (continued)



NC GC WC

**Mackerel tuna**  
(Jack mackerel, Kawa Kawa)  
*Euthynnus affinis*



NC GC WC

**Spanish mackerel**  
(Narrow-barred Spanish mackerel)  
*Scomberomorus commerson*



NC GC WC SC

**Skipjack tuna**  
*Katsuwonus pelamis*



NC GC WC

**School mackerel**  
(Queensland school mackerel, doggie)  
*Scomberomorus queenslandicus*



NC GC WC

**Shark mackerel**  
(Scaly mackerel, salmon mackerel)  
*Grammatorcynus bicarinatus*



NC GC WC

**Spotted mackerel**  
(Australian spotted mackerel)  
*Scomberomorus munroi*



NC GC WC

**Wahoo**  
*Acanthocybium solandri*



NC GC WC

**Grey mackerel**  
(Broad-barred Spanish mackerel,  
broad-banded mackerel)  
*Scomberomorus semifasciatus*





NC GC WC

**Cobia**  
(Black kingfish)  
*Rachycentron canadum*



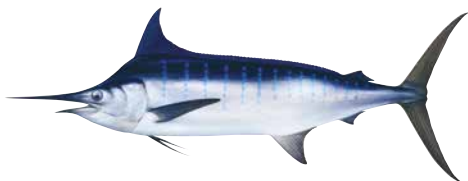
NC GC WC

**Black marlin**  
*Makaira indica*



NC GC WC

**Great barracuda**  
*Sphyraena barracuda*



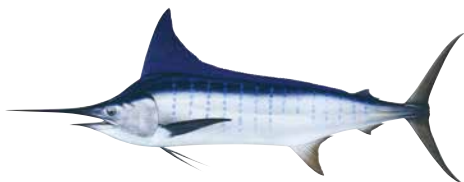
NC GC WC

**Blue marlin**  
*Makaira nigricans*



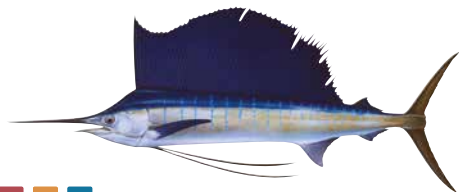
NC GC WC

**Mahi mahi**  
(Dolphinfish)  
*Coryphaena spp*



NC GC WC

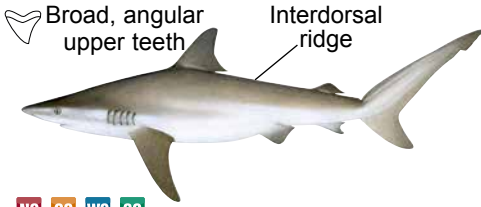
**Striped marlin**  
*Kajikia audax*



NC GC WC

**Sailfish**  
*Istiophorus platypterus*

# Sharks



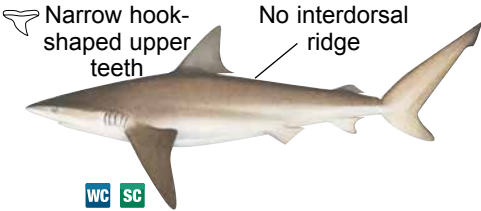
NC GC WC SC

**Dusky whaler**  
*Carcharhinus obscurus*



NC GC WC

**Common blacktip shark**  
*Carcharhinus limbatus*



WC SC

**Bronze whaler**  
*Carcharhinus brachyurus*



NC GC

**Whitetip reef shark**  
*Triaenodon obesus*



NC GC WC SC

**Sandbar shark**  
(Thickskin shark, northern whaler, sand shark)  
*Carcharhinus plumbeus*



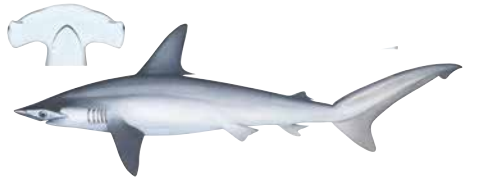
NC GC WC SC

**Tiger shark**  
*Galeocerdo cuvier*



NC GC WC

**Bull shark**  
*Carcharhinus leucas*



NC GC WC SC

**Hammerhead sharks**  
Family Sphyrnidae



WC SC

**Gummy shark**  
(Southern gummy shark)  
*Mustelus antarcticus*



NC GC WC

**Western spotted gummy shark**  
*Mustelus stevensi*



GC WC SC

**Whiskery shark**  
*Furgaleus macki*



NC GC WC SC

**Greynurse shark**  
PROTECTED SPECIES  
*Carcharias taurus*



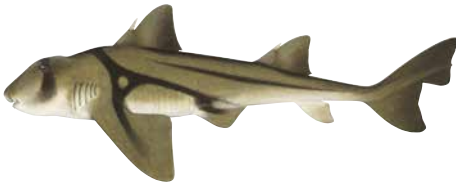
NC GC WC SC

**Wobbegongs**  
Family Orectolobidae



NC GC WC SC

**White shark**  
PROTECTED SPECIES  
*Carcharodon carcharias*



WC SC

**Port Jackson shark**  
*Heterodontus portusjacksoni*



WC SC

### Sawsharks

Family Pristiophoridae



NC GC WC

### Sawfishes

PROTECTED SPECIES

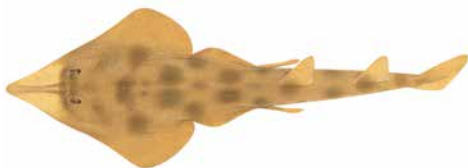
Family Pristidae



WC SC

### Southern fiddler ray

*Trygonorrhina dumerilii*



NC GC WC SC

### Western shovelnose ray

*Aptychotrema vincentiana*

# Crustaceans

Forked antennular flagellum



Antennae longer than tail

GC WC SC

**Western rock lobster**

*Panulirus cygnus*

Non-forked antennular flagellum



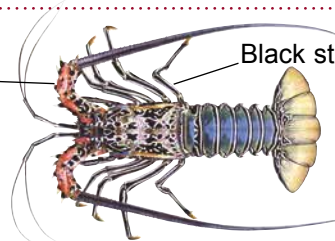
Antennae shorter than tail

WC SC

**Southern rock lobster**

*Jasus edwardsii*

Pink/orange coloured base of antennae



Black stripe on legs

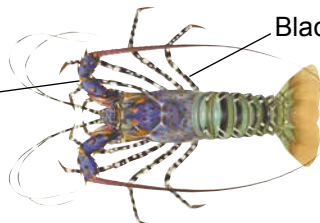
NC GC

**Painted rock lobster**

(Tropical rock lobster, green rock lobster)

*Panulirus versicolor*

Blue coloured base of antennae



Black and white spots on legs

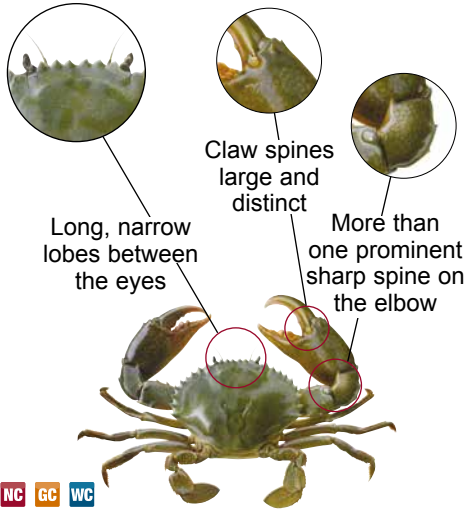
NC GC

**Ornate rock lobster**

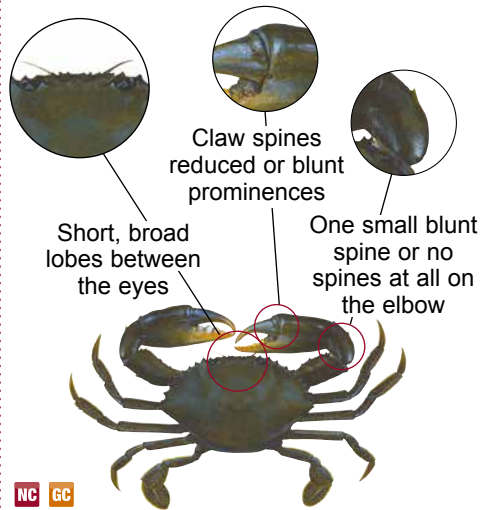
(Tropical rock lobster)

*Panulirus ornatus*

## Crustaceans (continued)



**Green mud crab**  
**(Giant mud crab)**  
*Scylla serrata*



**Brown mud crab**  
**(Orange mud crab)**  
*Scylla olivacea*



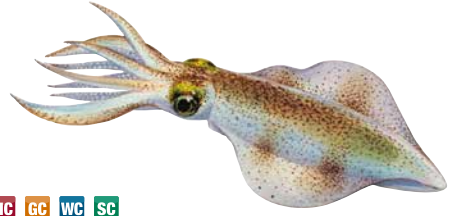
**Blue swimmer crab**  
**(Blue manna, blue crab)**  
*Portunus armatus* (formerly *P. pelagicus*)

# Molluscs



WC SC

**Roe's abalone**  
*Haliotis roei*



NC GC WC SC

**Squid**  
Order Teuthoidea



WC SC

**Greenlip abalone**  
*Haliotis laevigata*



NC GC WC SC

**Octopus**  
Family Octopodidae



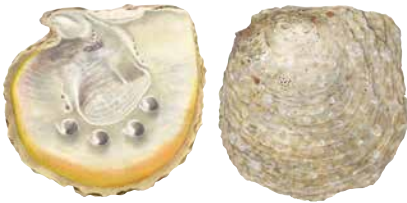
WC SC

**Brownlip abalone**  
*Haliotis conicopora*



NC GC WC SC

**Cuttlefish**  
*Sepia* spp



NC

**Silverlip pearl oyster**  
PROTECTED SPECIES  
*Pinctada maxima*

# Freshwater

Two bioregions apply for freshwater species – Northern Inland and Southern Inland.



NI

**Silver cobler**  
(Lake Argyle catfish, Ord River catfish)  
*Neoarius midgleyi*



NI

**Western sooty grunter**  
(Sooty grunter)  
*Hephaestus jenkinsi*



NI

**Cherabin**  
(Freshwater prawns)  
*Macrobrachium rosenbergii*



NI

**Redclaw**  
**PEST SPECIES**  
(Queensland red claw crayfish)  
*Cherax quadricarinatus*





SI

**Freshwater cobbler**  
(Freshwater catfish)  
*Tandanus bostocki*



SI

**Redfin**  
**PEST SPECIES**  
*Perca fluviatilis*



SI

**Rainbow trout**  
*Oncorhynchus mykiss*



SI

**Brown trout**  
*Salmo trutta*



SI

**Marron**  
*Cherax cainii*

# Index of common names

Amberjack.....	21	Bronze whaler.....	24	Golden snapper.....	9
Australian herring .....	14	Brownlip abalone .....	29	Golden trevally.....	15
Baldchin groper .....	6	Brown mud crab .....	28	Goldspotted rockcod.....	7
Banded sweep.....	17	Brownspotted wrasse .....	17	Grass emperor.....	11
Barcheek coral trout .....	8	Brownstripe snapper....	10	Great barracuda .....	23
Barramundi .....	18	Brown trout.....	31	Greenback mullet .....	16
Barramundi cod .....	8	Bull shark.....	24	Greenlip abalone .....	29
Barred javelin.....	18	Cherabin .....	30	Green mud crab.....	28
Bass groper .....	4	Chinamanfish.....	8	Greybanded grouper .....	4
Bighead gurnard perch.....	12	Chinaman rockcod.....	15	Grey mackerel .....	22
Bight redfish.....	5	Cobia .....	23	Greynurse shark .....	25
Black bream.....	20	Common blacktip shark.....	24	Gummy shark .....	25
Black jewfish.....	18	Common coral trout.....	8	Hammerhead sharks ...	24
Black marlin .....	23	Common dart.....	15	Hapuku .....	4
Blackspotted rockcod ...	7	Crimson snapper .....	9	Harlequin fish.....	8
Blackspot tuskfish.....	6	Cuttlefish.....	29	Horseshoe leatherjacket .....	19
Blotched javelin .....	18	Darktail snapper .....	9	Humphead maori wrasse .....	6
Bludger trevally.....	15	Diamondscale mullet ...	16	King George whiting ...	13
Bluebarred parrotfish .....	6	Dogtooth tuna.....	21	King threadfin .....	18
Blue-eye trevala.....	4	Duskytail grouper.....	7	Largetooth flounder .....	20
Blue mackerel.....	16	Dusky whaler .....	24	Longnose emperor .....	11
Blue marlin.....	23	Estuary cobbler.....	20	Longtail tuna .....	21
Blue morwong.....	12	Flame snapper.....	4	Longtom.....	14
Bluespotted emperor ...	11	Foxfish .....	5	Mackerel tuna.....	22
Bluespotted goatfish ...	16	Freshwater cobbler.....	31	Mahi mahi.....	23
Bluespotted tuskfish .....	6	Frostback rockcod .....	7	Mangrove Jack .....	9
Blue swimmer crab .....	28	Frypan bream .....	12	Maori snapper.....	10
Bluetail mullet.....	16	Giant sea catfish.....	18	Marron .....	31
Blue threadfin .....	18	Giant trevally.....	15	Moses' snapper .....	9
Blue tuskfish .....	6	Goldband snapper.....	10	Mulloway.....	18
Breaksea cod.....	7	Goldenline whiting .....	13	Northern pearl perch.....	5
				Northern sand flathead.....	20
				Northwest black bream.	19

Octopus .....	29	Sharptooth snapper .....	10	West Australian dhufish ..	5
Oriental bonito .....	16	Silver cobbler .....	30	Western Australian	
Ornate rock lobster .....	27	Silverlip pearl oyster .....	29	salmon .....	14
Painted rock lobster .....	27	Silver toadfish .....	19	Western blue groper .....	6
Painted sweetlips .....	12	Silver trevally .....	15	Western butterfish .....	17
Pink snapper .....	5	Sixspine leatherjacket ..	19	Western King wrasse ...	17
Port Jackson shark .....	25	Skipjack tuna .....	22	Western rock lobster .....	27
Potato rockcod .....	8	Smalltooth flounder .....	20	Western school	
Purple tuskfish .....	6	Snook .....	14	whiting .....	13
Queenfish .....	15	Southern bluefin tuna ..	21	Western shovelnose	
Queensland groper .....	8	Southern bluespotted		ray .....	26
Rainbow trout .....	31	flathead .....	20	Western sooty grunter ..	30
Rankin cod .....	7	Southern fiddler ray .....	26	Western spotted	
Redclaw .....	30	Southern garfish .....	14	gummy shark .....	25
Red emperor .....	9	Southern maori		Western striped	
Redfin .....	31	wrasse .....	17	grunter .....	17
Redspot emperor .....	11	Southern rock lobster ..	27	Western trumpeter	
Redthroat emperor .....	11	Southern school		whiting .....	13
Robinson's		whiting .....	13	Western yellowfin	
seabream .....	11	Spangled emperor .....	11	bream .....	19
Roe's abalone .....	29	Spanish mackerel .....	22	Whiskery shark .....	25
Rosy snapper .....	10	Spotted mackerel .....	22	White shark .....	25
Rosy threadfin bream ..	12	Squid .....	29	Whitetip reef shark .....	24
Ruby snapper .....	4	Striped marlin .....	23	Wobbegongs .....	25
Saddletail snapper .....	9	Stripey snapper .....	10	Yellowedge coronation	
Sailfish .....	23	Sunburnt pigfish .....	5	trout .....	8
Samsonfish .....	21	Swallowtail .....	5	Yelloweye mullet .....	16
Sandbar shark .....	24	Tailor .....	14	Yelloweye redfish .....	5
Sawfishes .....	26	Tarwhine .....	20	Yellowfin tuna .....	21
Sawsharks .....	26	Three-by-two garfish ...	14	Yellowfin whiting .....	13
School mackerel .....	22	Tiger shark .....	24	Yellowspotted rockcod ...	7
Sea mullet .....	16	Tomato rockcod .....	7	Yellowtail barracuda .....	14
Sea sweep .....	12	Tripletail .....	17	Yellowtail emperor .....	11
Sea trumpeter .....	17	Turrum .....	15	Yellowtail flathead .....	20
Sergeant baker .....	12	Wahoo .....	22	Yellowtail kingfish .....	21
Shark mackerel .....	22	Weeping toadfish .....	19	Yellowtail scad .....	13

The information in this guide is current at the date of printing, but may change. For more information visit the Department of Primary Industries and Regional Development website or contact us.

## Contact us

---

1300 374 731 (1300 DPIRD1)

[enquiries@dpird.wa.gov.au](mailto:enquiries@dpird.wa.gov.au)

### **Albany Office**

444 Albany Highway,  
Albany WA 6330  
(08) 9845 7400

### **Broome Office**

401 Port Drive,  
Broome WA 6725  
(08) 9193 8600

### **Busselton Office**

48A Bussell Highway,  
Busselton WA 6280  
(08) 9752 2152

### **Carnarvon Office**

262 South River Road,  
Carnarvon WA 6701  
(08) 9956 3333

### **Fremantle Office**

14 Capo D'Orlando  
Drive,  
South Fremantle WA  
6162  
(08) 9432 8000

### **Geraldton Office**

69-75 Connell Road,  
Geraldton WA 6530  
(08) 9956 8555

### **Hillarys Office**

39 Northside Drive,  
Hillarys WA 6025  
(08) 9203 0111

### **Mandurah Office**

107 Breakwater  
Parade,  
Mandurah Ocean  
Marina,  
Mandurah WA 6210  
(08) 9583 7800

## Important disclaimer

The Chief Executive Officer of the Department of Primary Industries and Regional Development and the State of Western Australia accept no liability whatsoever by reason of negligence or otherwise arising from the use or release of this information or any part of it.

Copyright © State of Western Australia (Department of Primary Industries and Regional Development), 2023.

[dpird.wa.gov.au](http://dpird.wa.gov.au)

ABN: 18 951 343 745



Scan to report  
illegal fishing