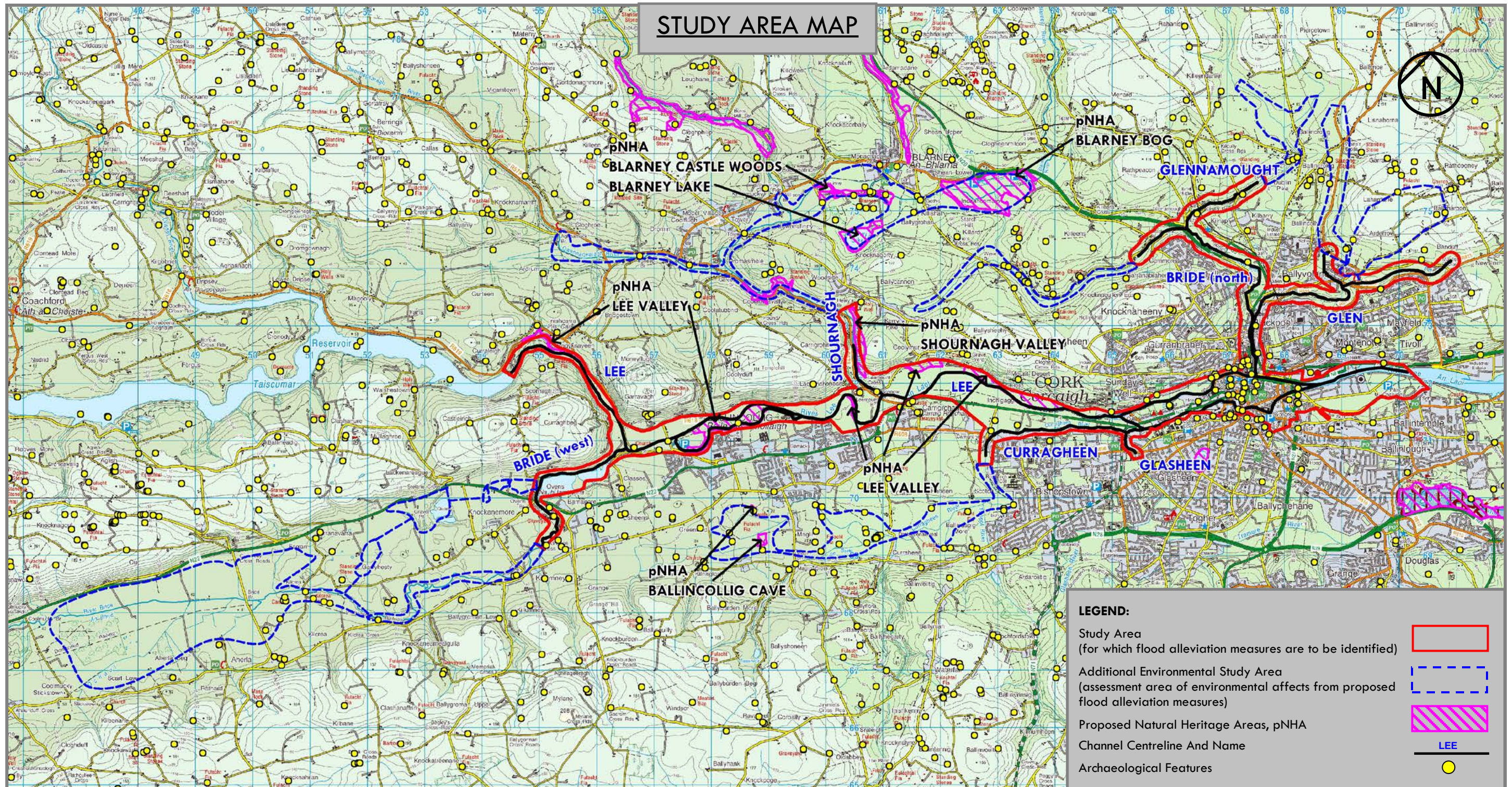
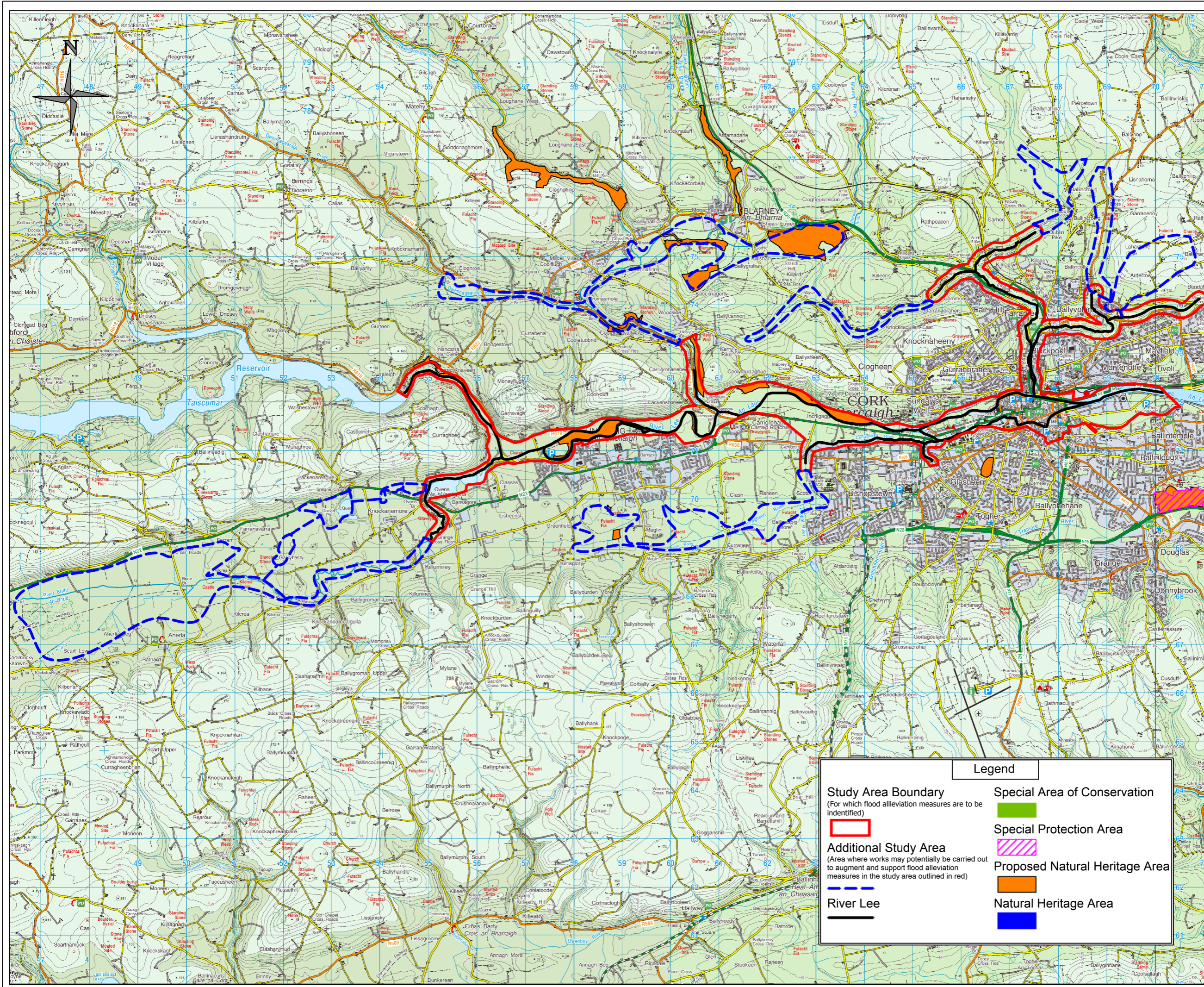


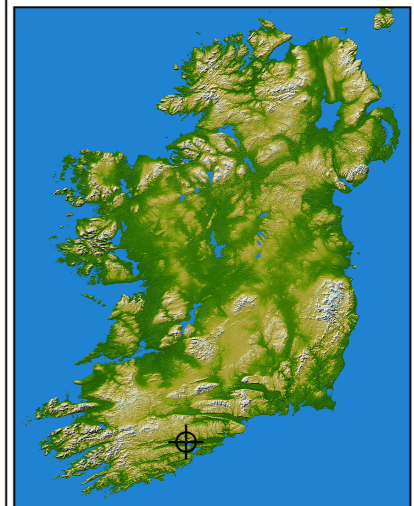
# Lower Lee (Cork City) Flood Relief Scheme (Including Blackpool and Ballyvolane)







NOTES



REV	DATE	ORN	DESCRIPTION	CHK	APP
REVISIONS					

Copyright Ryan Hanley  
This drawing must not be reproduced in any form without the prior written consent of Ryan Hanley consulting engineers

DRAWING STATUS			
<input type="checkbox"/> PRELIMINARY	<input type="checkbox"/> CONTRACT	<input type="checkbox"/> ISSUED	<input type="checkbox"/> CONSTRUCTION
<input type="checkbox"/> FOR APPROVAL	<input checked="" type="checkbox"/> FOR INFORMATION	<input type="checkbox"/> DECONSTRUCTED	<input type="checkbox"/> DRAFT

**RYAN HANLEY**  
CONSULTING ENGINEERS  
Sherwood House, Sherwood Avenue  
Taylor's Hill, Galway  
Tel: (091) 587116 Fax: (091) 587110  
Email: rhc@ryanhaley.ie  
Web: www.ryanhaley.ie

Dublin Office: Ground Floor, Suite 11, The Mall, Beacon Court, Sandycroft, Dublin 18.

CLIENT  
**Office of Public Works**

PROJECT  
**Lower Lee  
Flood Relief Scheme**

TITLE  
**Study Area  
and Protected Site Designations**

SCALE	DATE	DRAWN	CHECKED	APPROVED
NTS	09/13	JH	LD	TS
JOB NO.	DRAWING PATH	PROJECT NO.	REV	
2317		Figure 3.4.1		

Legend	
Study Area Boundary (For which flood alleviation measures are to be identified)	Special Area of Conservation
Additional Study Area (Area where works may potentially be carried out to augment and support flood alleviation measures in the study area outlined in red)	Special Protection Area
River Lee	Proposed Natural Heritage Area
	Natural Heritage Area



## SITE SYNOPSIS

**SITE NAME: GREAT ISLAND CHANNEL**

**SITE CODE: 001058**

The Great Island Channel stretches from Little Island to Midleton, with its southern boundary being formed by Great Island. It is an integral part of Cork Harbour which contains several other sites of conservation interest. Geologically, Cork Harbour consists of two large areas of open water in a limestone basin, separated from each other and the open sea by ridges of Old Red Sandstone. Within this system, Great Island Channel forms the eastern stretch of the river basin and, compared to the rest of Cork Harbour, is relatively undisturbed. Within the site is the estuary of the Owennacurra and Dungourney Rivers. These rivers, which flow through Midleton, provide the main source of freshwater to the North Channel.

The main habitats of conservation interest are the sheltered tidal sand and mudflats and Atlantic salt meadows, both habitats listed on Annex I of the EU Habitats Directive. Owing to the sheltered conditions, the intertidal flats are composed mainly of soft muds. These muds support a range of macro-invertebrates, notably *Macoma balthica*, *Scrobicularia plana*, *Hydrobia ulvae*, *Nephtys hombergi*, *Nereis diversicolor* and *Corophium volutator*. Green algal species occur on the flats, especially *Ulva lactuca* and *Enteromorpha* spp. Cordgrass (*Spartina* spp.) has colonised the intertidal flats in places, especially at Rossleague and Belvelly. The salt marshes are scattered through the site and are all of the estuarine type on mud substrate. Species present include Sea Purslane (*Halimione portulacoides*), Sea Aster (*Aster tripolium*), Thrift (*Armeria maritima*), Common Saltmarsh-grass (*Puccinellia maritima*), Sea Plantain (*Plantago maritima*), Greater Sea-spurry (*Spergularia media*), Sea Lavender (*Limonium humile*), Sea Arrowgrass (*Triglochin maritimum*), Mayweed (*Matricaria maritima*) and Red Fescue (*Festuca rubra*).

The site is extremely important for wintering waterfowl and is considered to contain three of the top five areas within Cork Harbour, namely North Channel, Harper's Island and Belvelly-Marino Point. Shelduck are the most frequent duck species with 800-1000 birds centred on the Fota/Marino Point area. There are also large flocks of Teal and Wigeon, especially at the eastern end. Waders occur in the greatest density north of Rosslare, with Dunlin, Godwit, Curlew and Golden Plover the commonest species. A population of about 80 Grey Plover is a notable feature of the area. All the mudflats support feeding birds; the main roost sites are at Weir Island and Brown Island and to the north of Fota at Killacloyne and Harper's Island. Ahanesk supports a roost also but is subject to disturbance. The numbers of Grey Plover and Shelduck, as given above, are of national importance.

The site is an integral part of Cork Harbour which is a wetland of international importance for the birds it supports. Overall, Cork Harbour regularly holds over 20,000 waterfowl and contains Internationally important numbers of Black-tailed Godwit (1,181) and Redshank (1,896) along with Nationally important numbers of

nineteen other species. Furthermore, it contains the large Dunlin (12,019) and Lapwing (12,528) flocks. All counts are average peaks, 1994/95 – 1996/97. Much of the site forms part of Cork Harbour Special Protection Area, an important bird area designated under the EU Birds Directive.

While the main land use within the site is aquaculture (Oyster farming), the greatest threats to its conservation significance come from road works, infilling, sewage outflows and possible marina developments.

The site is of major importance for the two habitats listed on the EU Habitats Directive that it contains, as well as for its important numbers of wintering waders and wildfowl. It also supports a good invertebrate fauna.

## SITE SYNOPSIS

**SITE NAME: CORK HARBOUR SPA**

**SITE CODE: 004030**

Cork Harbour is a large, sheltered bay system, with several river estuaries - principally those of the Rivers Lee, Douglas, Owenboy and Owennacurra. The SPA site comprises most of the main intertidal areas of Cork Harbour, including all of the North Channel, the Douglas River Estuary, inner Lough Mahon, Monkstown Creek, Lough Beg, the Owenboy River Estuary, Whitegate Bay and the Rostellan and Poul nabibe inlets.

Owing to the sheltered conditions, the intertidal flats are often muddy in character. These muds support a range of macro-invertebrates, notably *Macoma balthica*, *Scrobicularia plana*, *Hydrobia ulvae*, *Nephtys hombergi*, *Nereis diversicolor* and *Corophium volutator*. Green algae species occur on the flats, especially *Ulva lactuca* and *Enteromorpha* spp. Cordgrass (*Spartina* spp.) has colonised the intertidal flats in places, especially where good shelter exists, such as at Rossleague and Belvelly in the North Channel. Salt marshes are scattered through the site and these provide high tide roosts for the birds. Salt marsh species present include Sea Purslane (*Halimione portulacoides*), Sea Aster (*Aster tripolium*), Thrift (*Armeria maritima*), Common Saltmarsh-grass (*Puccinellia maritima*), Sea Plantain (*Plantago maritima*), Lax-flowered Sea-lavender (*Limonium humile*) and Sea Arrowgrass (*Triglochin maritima*). Some shallow bay water is included in the site. Cork Harbour is adjacent to a major urban centre and a major industrial centre. Rostellan Lake is a small brackish lake that is used by swans throughout the winter. The site also includes some marginal wet grassland areas used by feeding and roosting birds.

The site is a Special Protection Area (SPA) under the E.U. Birds Directive, of special conservation interest for the following species: Little Grebe, Great Crested Grebe, Cormorant, Grey Heron, Shelduck, Wigeon, Teal, Pintail, Shoveler, Red-breasted Merganser, Oystercatcher, Golden Plover, Grey Plover, Lapwing, Dunlin, Black-tailed Godwit, Bar-tailed Godwit, Curlew, Redshank, Black-headed Gull, Common Gull, Lesser Black-backed Gull and Common Tern. The site is also of special conservation interest for holding an assemblage of over 20,000 wintering waterbirds. The E.U. Birds Directive pays particular attention to wetlands and, as these form part of this SPA, the site and its associated waterbirds are of special conservation interest for Wetland & Waterbirds.

Cork Harbour is an internationally important wetland site, regularly supporting in excess of 20,000 wintering waterfowl, for which it is amongst the top five sites in the country. The two-year mean of summed annual peaks for the entire harbour complex was 55,401 for the period 1995/96 and 1996/97. Of particular note is that the site supports internationally important populations of Black-tailed Godwit (905) and Redshank (1,782) - all figures given are average winter means for the two winters 1995/96 and 1996/97. At least 18 other species have populations of

national importance, as follows: Little Grebe (51), Great Crested Grebe (204), Cormorant (705), Grey Heron (63), Shelduck (2,093), Wigeon (1,852), Teal (922), Pintail (66), Shoveler (57), Red-breasted Merganser (88), Oystercatcher (1,404), Golden Plover (3,653), Grey Plover (84), Lapwing (7,688), Dunlin (10,373), Bar-tailed Godwit (417), Curlew (1,325) and Greenshank (26). The Shelduck population is the largest in the country (over 10% of national total). The site has regionally or locally important populations of a range of other species, including Whooper Swan (10), Pochard (145) and Turnstone (79). Other species using the site include Gadwall (13), Mallard (456), Tufted Duck (113), Goldeneye (31), Coot (53), Mute Swan (38), Ringed Plover (34) and Knot (38). Cork Harbour is a nationally important site for gulls in winter and autumn, especially Black-headed Gull (4,704), Common Gull (3,180) and Lesser Black-backed Gull (1,440).

A range of passage waders occurs regularly in autumn, including such species as Ruff (5-10), Spotted Redshank (1-5) and Green Sandpiper (1-5). Numbers vary between years and usually a few of each of these species over-winter.

The wintering birds in Cork Harbour have been monitored since the 1970s and are counted annually as part of the I-WeBS scheme.

Cork Harbour has a nationally important breeding colony of Common Tern (3-year mean of 69 pairs for the period 1998-2000, with a maximum of 102 pairs in 1995). The birds have nested in Cork Harbour since about 1970, and since 1983 on various artificial structures, notably derelict steel barges and the roof of a Martello Tower. The birds are monitored annually and the chicks are ringed.

Extensive areas of estuarine habitat have been reclaimed since about the 1950s for industrial, port-related and road projects, and further reclamation remains a threat. As Cork Harbour is adjacent to a major urban centre and a major industrial centre, water quality is variable, with the estuary of the River Lee and parts of the Inner Harbour being somewhat eutrophic. However, the polluted conditions may not be having significant impacts on the bird populations. Oil pollution from shipping in Cork Harbour is a general threat. Recreational activities are high in some areas of the harbour, including jet skiing which causes disturbance to roosting birds.

Cork Harbour is of major ornithological significance, being of international importance both for the total numbers of wintering birds (i.e. > 20,000) and also for its populations of Black-tailed Godwit and Redshank. In addition, there are at least 18 wintering species that have populations of national importance, as well as a nationally important breeding colony of Common Tern. Several of the species which occur regularly are listed on Annex I of the E.U. Birds Directive, i.e. Whooper Swan, Golden Plover, Bar-tailed Godwit, Ruff and Common Tern. The site provides both feeding and roosting sites for the various bird species that use it.