

**FLORIDA
MUSEUM**
OF NATURAL HISTORY®

BULLETIN

**NEW SPECIMEN-BASED RECORDS
OF FLORIDA BIRDS**

Andrew W. Kratter, Tom Webber, Terry Taylor, and David W. Steadman

Vol. 43, No. 4, pp. 111-161

2002

UNIVERSITY OF FLORIDA

GAINESVILLE

Numbers of the **BULLETIN OF THE FLORIDA MUSEUM OF NATURAL HISTORY** are published at irregular intervals. Volumes contain about 300 pages and are not necessarily completed in any one calendar year.

FRED G. THOMPSON, *Editor*
MARGARET E.B. JOYNER, *Managing Editor*

Send communications concerning purchase or exchange of the publication and manuscripts queries to:

Managing Editor of the BULLETIN
Florida Museum of Natural History
University of Florida
PO Box 117800
Gainesville, FL 32611-7800, U.S.A.
Phone: 352-392-1721, ext. 457
Fax: 352-846-0287
e-mail: mjoyner @ flmnh.ufl.edu

ISSN: 0071-6154

CODEN: BF 5BA5

Publication date: March 20, 2002

Price: \$5.50

NEW SPECIMEN-BASED RECORDS OF FLORIDA BIRDS

ANDREW W. KRATTER^{1,2}, TOM WEBBER¹, TERRY TAYLOR¹, AND DAVID W. STEADMAN¹

ABSTRACT

We report 1258 specimens of 217 species of indigenous and non-indigenous birds salvaged or collected in Florida and deposited in the Florida Museum of Natural History from 1992 to 2001. Each of these specimens advances our understanding of the geographic and seasonal occurrence of birds in Florida, with added biological perspective from data on sex, reproductive condition, molt, age, and fat levels taken during preparation of the specimens. Included are detailed accounts of 161 specimens of 53 species. Of these, 15 were known previously from 10 or fewer specimens from Florida (*Puffinus puffinus*, *Oceanites oceanicus*, *Phaethon aethereus*, *Melanitta nigra*, *M. fusca*, *Porphyrio porphyrio*, *Calidris maritima*, *Larus fuscus*, *Rissa tridactyla*, *Brachyramphus [marmoratus] perdix*, *Chordeiles acutipennis*, *Streptoprocne zonaris*, *Acridotheres tristis*, *Molothrus bonariensis*, and *Carpodacus mexicanus*). A specimen of *Streptoprocne zonaris* represents *S. z. pallidifrons* and is the first North American specimen of this West Indian subspecies.

RESUME

Reportamos 1258 especímenes de 217 especies de aves nativas e introducidas colectados o recuperados en Florida y depositados en el Florida Museum of Natural History desde 1992 a 2001. Cada uno de esos especímenes amplía nuestro conocimiento sobre la distribución geográfica y la presencia estacional de aves en Florida, y añade una perspectiva biológica sobre estas aves con datos sobre el sexo, estado reproductivo, muda de plumaje, edad, y niveles de grasa notados durante la preparación de los especímenes, incluimos reseñas detalladas de 161 especímenes de 53 especies. De éstos, 15 son conocidas previamente de 10 o menos especímenes de Florida (*Puffinus puffinus*, *Oceanites oceanicus*, *Phaethon aethereus*, *Melanitta nigra*, *M. fusca*, *Porphyrio porphyrio*, *Calidris maritima*, *Larus fuscus*, *Rissa tridactyla*, *Brachyramphus [marmoratus] perdix*, *Chordeiles acutipennis*, *Streptoprocne zonaris*, *Acridotheres tristis*, *Molothrus bonariensis*, and *Carpodacus mexicanus*). Un espécimen de *Streptoprocne zonaris* pertenece a *S. z. pallidifrons* y es el primer espécimen norteamericano de esa subespecie antillana.

Key Words: Florida, birds, museum, specimens, seasonality, rare species, molt

TABLE OF CONTENTS

INTRODUCTION	113
SPECIES ACCOUNTS	115
CORY'S SHEARWATER <i>Calonectris diomedea diomedea</i>	115
GREATER SHEARWATER <i>Puffinus gravis</i>	115
MANX SHEARWATER <i>Puffinus puffinus</i>	115
SOOTY SHEARWATER <i>Puffinus griseus</i>	115
WILSON'S STORM-PETREL <i>Oceanites oceanicus</i>	115
LEACH'S STORM-PETREL <i>Oceanodroma leucorhoa leucorhoa</i>	116
RED-BILLED TROPICBIRD <i>Phaethon aethereus mesonauta</i>	116
WHITE-TAILED TROPICBIRD <i>Phaethon lepturus ascensionis</i>	118
BROWN BOOBY <i>Sula leucogaster</i>	118
AMERICAN BITTERN <i>Botaurus lentiginosus</i>	118
BLACK SCOTER <i>Melanitta nigra americana</i>	118
WHITE-WINGED SCOTER <i>Melanitta fusca deglandi</i>	118
"FLORIDA" SNAIL KITE <i>Rostrhamus sociabilis plumbeus</i>	118

¹ Florida Museum of Natural History, P. O. Box 117800, University of Florida, Gainesville, FL 32611.

² Corresponding author: phone 352-392-1721; fax 352-846-0287; email kratter@flmnh.ufl.edu

COOPER'S HAWK <i>Accipiter cooperii</i>	119
BROAD-WINGED HAWK <i>Buteo platypterus platypterus</i>	119
SHORT-TAILED HAWK <i>Buteo brachyurus fuliginosus</i>	119
"AUDUBON'S" CRESTED CARACARA <i>Caracara cheriway audubonii</i>	119
MERLIN <i>Falco columbarius columbarius</i>	120
PEREGRINE FALCON <i>Falco peregrinus anatum</i>	120
BLACK RAIL <i>Laterallus jamaicensis jamaicensis</i>	120
PURPLE SWAMPHEN <i>Porphyrio porphyrio poliocephalus</i>	120
WHOOPIING CRANE <i>Grus americana</i>	120
BLACK-BELLIED PLOVER <i>Pluvialis squatarola</i>	120
SNOWY PLOVER <i>Charadrius alexandrinus nivosus</i>	120
PURPLE SANDPIPER <i>Calidris maritima</i>	120
RED-NECKED PHALAROPE <i>Phalaropus lobatus</i>	121
POMARINE JAEGER <i>Stercorarius pomarinus</i>	121
LESSER BLACK-BACKED GULL <i>Larus fuscus</i>	122
GREAT BLACK-BACKED GULL <i>Larus marinus</i>	122
BLACK-LEGGED KITTIWAKE <i>Rissa tridactyla tridactyla</i>	122
ROSEATE TERN <i>Sterna dougallii dougallii</i>	122
BRIDLED TERN <i>Sterna anaethetus recognita</i>	123
LONG-BILLED MURRELET <i>Brachyramphus [marmoratus] perdix</i>	124
WHITE-CROWNED PIGEON <i>Columba leucocephala</i>	124
EURASIAN COLLARED-DOVE <i>Streptopelia decaocto</i>	124
WHITE-WINGED DOVE <i>Zenaida asiatica</i>	125
MONK PARAKEET <i>Myiopsitta monachus</i>	125
"ANTILLEAN" SHORT-EARED OWL <i>Asio flammeus domingensis</i>	125
LESSER NIGHTHAWK <i>Chordeiles acutipennis acutipennis</i>	125
WHITE-COLLARED SWIFT <i>Streptoprocne zonaris pallidifrons</i>	125
COMMON MYNA <i>Acridotheres tristis</i>	126
CEDAR WAXWING <i>Bombycilla cedrorum</i>	126
NASHVILLE WARBLER <i>Vermivora ruficapilla ruficapilla</i>	127
MAGNOLIA WARBLER <i>Dendroica magnolia</i>	127
BLACK-THROATED GREEN WARBLER <i>Dendroica virens</i>	127
BAY-BREASTED WARBLER <i>Dendroica castanea</i>	127
CONNECTICUT WARBLER <i>Oporornis agilis</i>	127
LOUISIANA WATERTHRUSH <i>Seiurus motacilla</i>	128
SCARLET TANAGER <i>Piranga olivacea</i>	128
"FLORIDA" GRASSHOPPER SPARROW <i>Ammodramus savannarum floridanus</i>	128
ROSE-BREASTED GROSBEAK <i>Pheucticus ludovicianus</i>	128
SPOT-BREASTED ORIOLE <i>Icterus pectoralis</i>	128
SHINY COWBIRD <i>Molothrus bonariensis minimus</i>	128
HOUSE FINCH <i>Carpodacus mexicanus</i>	129
ACKNOWLEDGMENTS	129
LITERATURE CITED	129
APPENDIX: Birds acquired in Florida, June 1992 through May 2001	131
INDEX	160

INTRODUCTION

In recent years, the bird collection at the Florida Museum of Natural History, University of Florida (UF), has grown substantially. Much of this growth has been from specimens acquired in Florida (>1000 specimens from 1998 to May 2001). More than half these specimens (>550) have come from wildlife rehabilitation clinics, which accept birds found injured or sick in the wild and try to rehabilitate them for release. Because of the severity of many injuries and illnesses, however, rehabilitation clinics report mortality rates of 40-50% (J. Fitzgerald, C. Rohkamm, S. Small, P. Deitschel, pers. comm.). Many of these dead birds, formerly incinerated, are now being saved for UF, where most are being prepared and cataloged into the collection. The other major source of recent specimens from Florida has been birds found dead and donated to UF by the Florida Fish and Wildlife Conservation Commission (FFWCC), United States Department of Agriculture (USDA), United States Fish and Wildlife Service (USFWS), other governmental agencies, and the general public.

Aside from allowing determination of age, sex, and subspecies (often not possible with sight records), new methods of specimen preparation (such as saving a spread wing, partial skeleton, and tissue sample, as well as the skin from a single specimen) and data recording (e.g., noting detailed reproductive condition, presence or absence of a bursa of Fabricius, skull ossification, soft-part colors, molt, fat levels, and stomach contents) have greatly increased the biological value of recently prepared specimens (Winker, 2000). A major collection of bird specimens may be viewed as a library that serves as a long-term resource for researchers and educators. Especially given the recent proliferation of molecular techniques, one can determine the content of the genome, the isotope signatures, and the presence of such extraneous molecules as pesticides or heavy metals from our specimens by plucking a single feather or clipping a single toenail.

The principal reason for this paper is to document the more noteworthy records among the specimens prepared during the past ten years from Florida (Fig. 1). These include records of several species that are of accidental or casual status in Florida (e.g., *Puffinus puffinus*, *Phaethon aethereus*, *Chordeiles acutipennis*: see accounts or Index for English names), are rare and local (e.g., *Rostrhamus sociabilis*, *Laterallus jamaicensis*, *Charadrius alexandrinus*, *Asio flammeus*, *Vermivora ruficapilla*), may be more common, but have few specimen records (e.g., various shearwaters, storm-

petrels, and migrant warblers), or are recently introduced (e.g., *Grus americana*, *Porphyrio porphyrio*, *Streptopelia decaocto*, *Acridotheres tristis*, *Carpodacus mexicanus*). Secondarily, we provide a complete listing of all specimens from Florida that we have prepared from January 1992 to present (Appendix). This list will update the compilation of all Florida specimens presented in Stevenson and Anderson (1994).

The contribution of bird specimens to the UF collection by wildlife rehabilitation clinics comes at a time when active bird collecting is becoming less feasible due to land-use restrictions, declining populations of some species, and increased restrictions on scientific collecting by federal and state agencies. For these reasons, the specimen resource afforded by wildlife rehabilitation clinics is our only means of acquiring new specimens of many species. Because of limitations in storage space and time for preparing specimens, however, we receive specimens from only a small fraction of the more than 200 clinics currently licensed in Florida by the FFWCC. The clinics that have recently donated large numbers of specimens to us are the Florida Keys Wild Bird Center (FKWBC) in Key Largo (Monroe Co.), the Wildlife Care Center (WCC) in Ft. Lauderdale (Broward Co.), the Conservancy of Southwest Florida (CSWF) in Naples (Collier Co.), Care and Rehabilitation of Wildlife (CROW) on Sanibel Island (Lee Co.), Florida Wildlife Hospital (FWH) in Melbourne (Brevard Co.), Cynthia Rohkamm (CRRC) at Lighthouse Point (Broward Co.), and P. and J. Loll Wildlife Rehabilitation Clinic (PJL) in Indialantic (Brevard Co.).

We emphasize the importance of the UF bird collection for both professional and amateur students of ornithology in Florida. We regularly host visitors from around the state. The UF collection is available for in-house use by making an appointment with any of the authors (contact details above). Our specimens and associated data are used daily for a wide variety of anatomical, systematic, paleontological, distributional, and ecological studies. They also provide data useful to land managers. Various UF faculty use the specimens for teaching in five different graduate and undergraduate courses. Recently, Alachua County's Rex Rowan has made extensive use of the collection for his accounts of birds in the county (Rowan and Manetz, 1995; Alachua Audubon Society and Florida Museum of Natural History, 1997; R. Rowan, ms. in prep.).

In our species accounts, the previous specimen records and status of the species in Florida are taken from Stevenson and Anderson (1994), unless cited

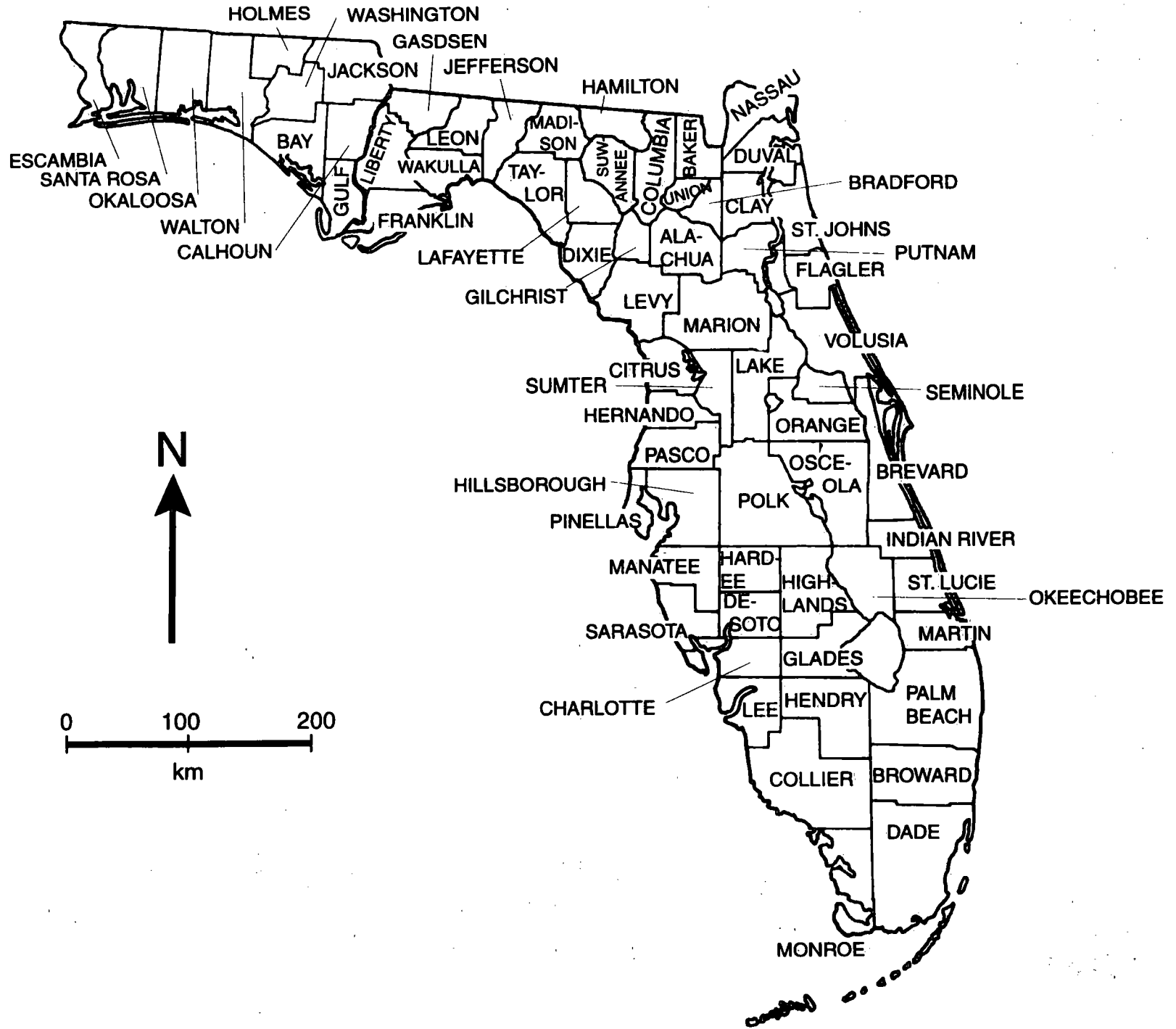


Figure 1. Map of Florida, with counties.

otherwise. We continue their use of the terms "reports" for sight records without further documentation and "records" for records that have photographic or specimen documentation. In their measures of relative abundance, Stevenson and Anderson (1994) usually consider species less common than in the other modern standard reference on Florida birds (Robertson and Woolfenden, 1992). The more conservative measures of status are appropriate here given the difficulty and unpredictability of securing specimens. We consider the specimen records in Stevenson and Anderson (1994) to be current through 1991. For the period after 1991, our data on species records and reports are taken from the *Florida Field Naturalist* (compiled by B. Anderson and B. Pranty). Some of the specimens reported here were first published in these seasonal reports, although seldom with any data other than location and date. Most specimens reported here are published for the first time.

SPECIES ACCOUNTS

CORY'S SHEARWATER *Calonectris diomedea diomedea*.

UF 39995 (skin). Immature male, plumage a mix of worn and fresh feathers, one secondary sheathed, no other molt; found alive, Melbourne Beach, Brevard Co., 7 October 1996, brought to PJJ, where it died.

Although this species is a regular and frequent migrant offshore, there were only approximately 50 records through 1994, including 17 specimens, two of which were from Brevard Co. The subspecies represented is the expected *C. d. diomedea*, which breeds on Mediterranean islands.

GREATER SHEARWATER *Puffinus gravis*.

UF 39914 (complete skeleton). Male, found dead in surf, Paradise Beach, Brevard Co., 12 June 1997.

UF 39962 (skin, partial skeleton, spread wing). Emaciated immature female, active primary molt, remiges mixed fresh and worn, rectrices fresh, no body molt; found alive in surf, Indialantic, Brevard Co., 11 June 1997; died same day at PJJ.

UF 40740 (complete skeleton, spread wing). Emaciated female, fresh plumage, no molt; found dead in surf, Vilano Beach, St. Johns Co., 10 June 1999.

UF 41628 (skin, partial skeleton, spread wing). Emaciated after-hatch-year male, found dead on beach by Diane Reed, Vilano Beach, St. Johns Co., 12 June 2000. No active molt, primary 10 and secondaries 1-2 and 7+ worn, rectrices 2-6 worn, other wing and tail feathers fresh.

This species is an irregular summer visitor. The four specimens listed above were all found from 10 to 12 June, although in three different years. To the total of 35 specimens listed for Florida (Stevenson and Anderson, 1994), including a few from both St. Johns and Brevard Cos., can be added an additional 70 specimens found dead in June 1993, which were distributed among various museums (Pranty, 1994, but none to UF), but not all were preserved (B. Anderson, in litt.).

MANX SHEARWATER *Puffinus puffinus*.

UF 39973 (skin, partial skeleton, spread wing; Fig. 2). Immature female, plumage fresh, no molt; found dead on beach by Mark Robson, 1.5 km south of Lake Worth Public Beach, Palm Beach Co., 21 or 22 November 1997; British Museum of Natural History band.

UF 40551 (skin, partial skeleton, spread wing; Fig. 2). Immature female, actively replacing primaries, tail fresh, light body molt; received in December 1998 without data from CRRC. Judging by wear and active molt, probably a first-summer bird. Nearly all specimens from CRRC come from the Boca Raton or Ft. Lauderdale area; presumably found on the beach in this area.

This species is occasional in Florida with approximately 20 reports and six specimens through 1996 (Anderson, 1996), one of which was from Palm Beach Co.

SOOTY SHEARWATER *Puffinus griseus*.

UF 39963 (skin, partial skeleton, spread wing). Emaciated immature female, plumage fresh, no molt; found alive on beach, north Indialantic, Brevard Co., 9 June 1997; died same day at PJJ. Squid or octopus beak in stomach.

UF 39993 (skin, partial skeleton, spread wing). Unknown sex and age (gonads decayed), wing worn, tail fresh, no molt; found dead on the beach by Rex Rowan, Vilano Beach, St. Johns Co., 10 June 1997.

This species is occasional in Florida, chiefly during the warmer months, with about 60 reports and 11 specimens through 1991. The University of Central Florida (UCF) has two more recent specimens from Brevard Co. that have not been published (Bruce Anderson, in litt.).

WILSON'S STORM-PETREL *Oceanites oceanicus*.

UF 40159 (skin). Adult female, active wing and body molt; found dead, Vilano Beach, St. Johns Co., 12 June 1997.

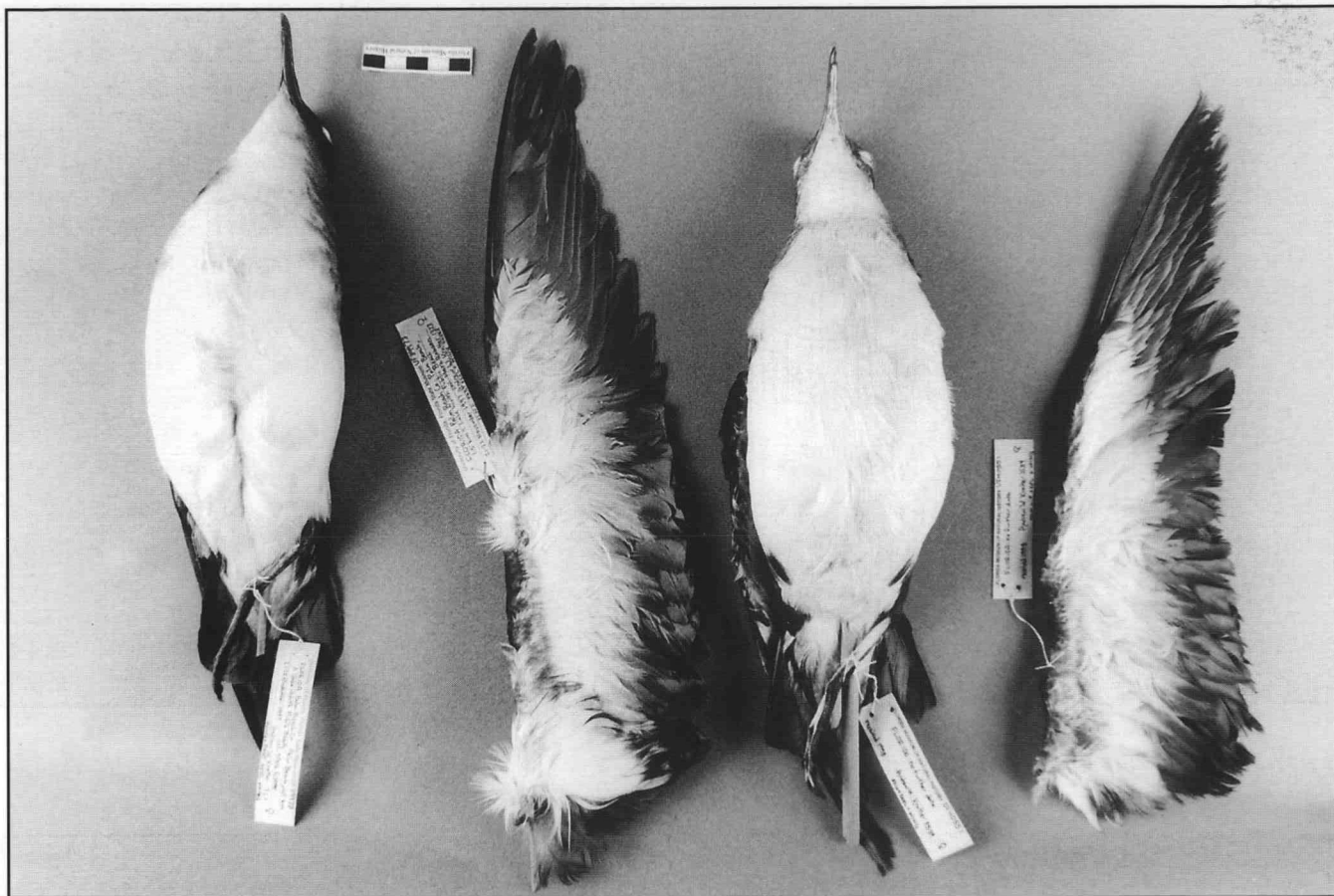


Figure 2. *Puffinus puffinus*, (left) UF 39973, skin and spread wing; (right) UF 40551, skin and spread wing. It is distinguished from *Puffinus lherminieri* (Audubon's Shearwater), the only other small, white-bellied species of *Puffinus* in Florida, by the white undertail coverts, proportionately long bill, and large size.

UF 42053 (skin, partial skeleton, wing). Adult male, worn primaries, light body molt; found emaciated, Indialantic, Brevard Co., 9 May 2001, died at FWH.

UF 42142 (skin, partial skeleton, wing). Adult female, light wear in remiges and rectrices, no active molt, found dead by Michelle Davis and David LaPuma, Boca Raton, Palm Beach Co., 11 May 2001.

This storm-petrel is a regular summer visitor in small numbers to Florida. Through 1991, only three specimens were known for Florida, none from south of Brevard Co. UF 40159 is the first record and specimen from St. Johns Co. UF 42142, the first specimen for Palm Beach Co, is the southernmost specimen for Florida.

LEACH'S STORM-PETREL *Oceanodroma leucorhoa leucorhoa*.

UF 39369 (skin). Immature male found dead, Melbourne Beach, Brevard Co., 11 June 1997.

UF 42023-27, UF 42050-52 (mix of skins, skeletons, and spread wings). All found on beaches in Brevard Co. (42023-27) or St. Johns and Duval Cos. (UF 42050-52), during the intense easterly winds of 3-9 May 2001.

This storm-petrel is a rare summer visitor to Florida, with 21 specimens known through 1996 (Anderson, 1993; Stevenson and Anderson, 1994; Pranty, 1997a,b).

RED-BILLED TROPICBIRD *Phaethon aethereus mesonauta*.

UF 40996 (skin, partial skeleton, spread wing: Figs. 3A, 3B). Adult female (no bursa; appeared not to have bred that year), active primary molt, tail mix of worn and fresh feathers, no body molt; found alive in median of Highway A1A on Patrick Air Force Base, Brevard Co., 2 October 1999; brought alive to FWH, died 3 October. Necrotic tissue found around the heart and upper intestines.

This species is casual in Florida. The five reports

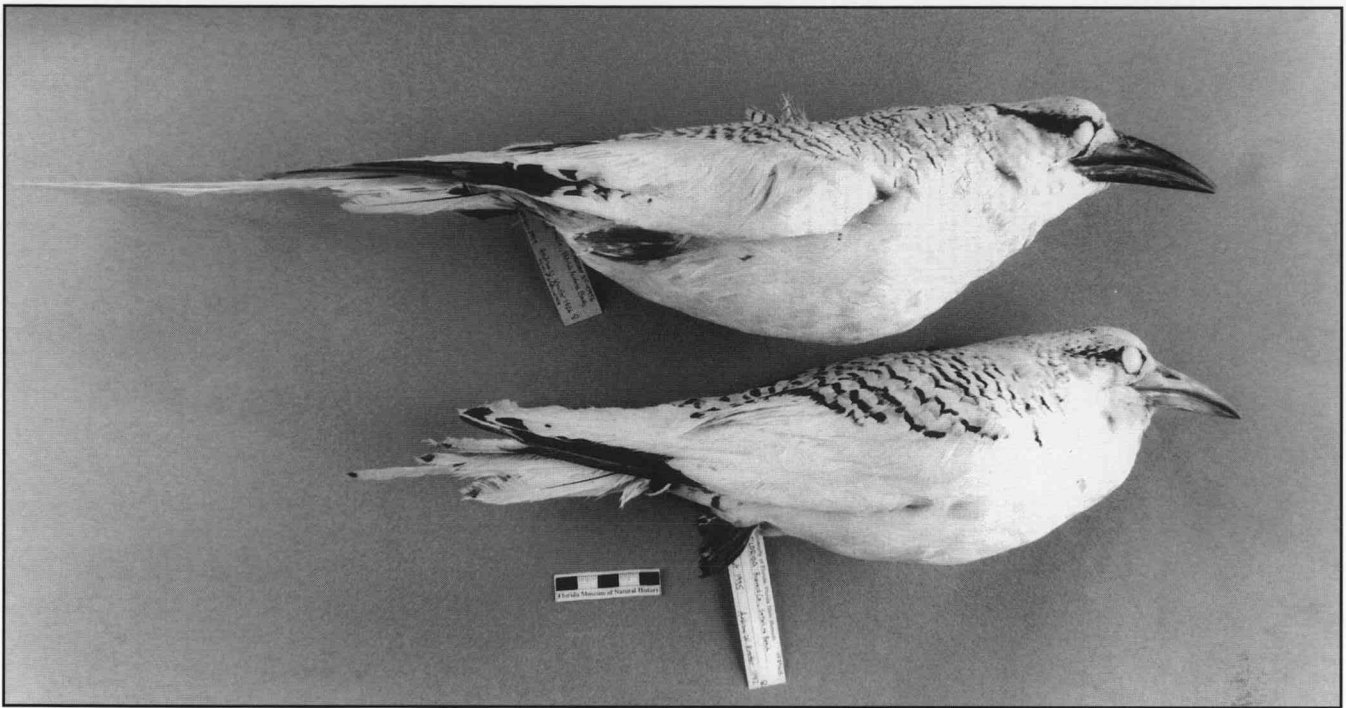


Figure 3A. *Phaethon aethereus* (UF 40996, top) and *P. lepturus* (UF 39615, bottom).

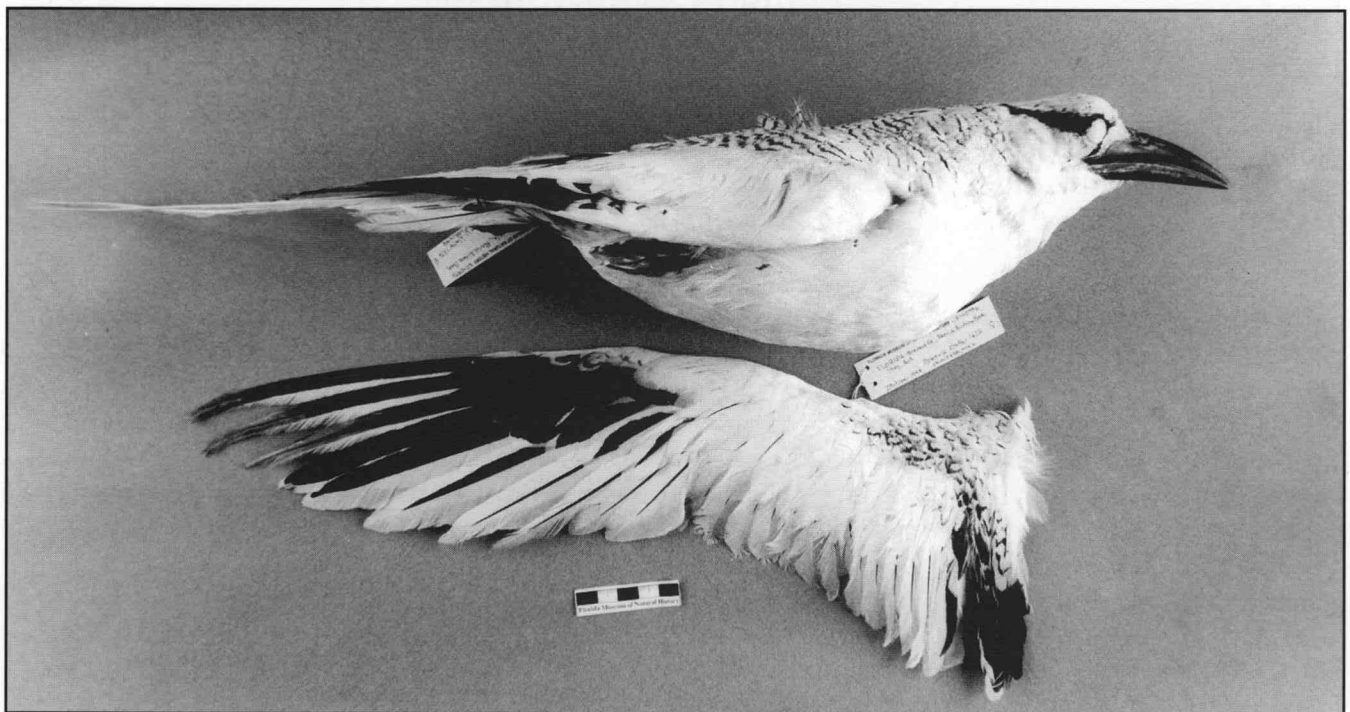


Figure 3B. *Phaethon aethereus*, UF 40996, skin (top) and spread wing (bottom). Notice the thicker and darker bill of *P. aethereus* (red in *aethereus* and yellow in *lepturus*), the elongated central rectrices (indicating adult plumage), and the barred back. The black barring in the more common *P. lepturus* is more prominent and occurs only in sub-adult plumages, which lack elongated central rectrices. In addition, *P. aethereus* has a more prominent black eyeline and the outer primary coverts are black (white in *P. lepturus*).

listed through 1996 (Anderson, 1996) were from spring (one record), summer, and early fall (to 9 October). The three previous specimens consist of one each from St. Lucie, St. Johns, and Martin Cos. The only other evidence from Brevard Co. was a sighting off Cape Canaveral in 1964 (Stevenson and Anderson, 1994).

WHITE-TAILED TROPICBIRD *Phaethon lepturus ascensionis*.

UF 39615 (skin; Fig. 3A). Immature female, no molt; found alive by Norma Sebers, Satellite Beach, Brevard Co., 3 August 1995; brought to PJJ, died 5 September.

UF 40589 (skin). Immature male, plumage fresh, no molt; found alive in surf, St. Augustine, St. Johns Co., 14 October 1998; brought to Lora Smith, licensed wildlife rehabilitator, died next day.

Although this is the only regularly occurring tropicbird in Florida, it is still uncommon. Reports have been decreasing recently. All the ca. 14 specimens for the state through 1991 are from June to September, except for one on 20 October (Vero Beach, Indian River Co.).

BROWN BOOBY *Sula leucogaster*.

UF 40628 (skin, partial skeleton, spread wing). Juvenile female, plumage light wear, no molt; found alive but weak and emaciated, J. U. Lloyd State Park, Dania, Broward Co., 21 November 1998; brought to WCC, died 22 November.

UF 41423 (skin, partial skeleton, spread wing). Juvenile female, worn plumage, no molt; found with broken ulna and emaciated, Key Largo, Monroe Co., 10 May 2000; died 12 May at FKWBC.

UF 41610 (complete skeleton, spread wing). Juvenile female, worn plumage; found emaciated, Pompano Beach, Broward Co., 3 May 2000; died 8 May at WCC.

This species is occasional in Florida away from the Dry Tortugas. Of the ca. 16 specimens from the state through 1991, none was from Broward Co.

AMERICAN BITTERN *Botaurus lentiginosus*.

UF 39916 (complete skeleton). Female (age not determined), found dead by Jim Schuette on the Miami Canal levee, 8 mi. north of the Broward County line, Palm Beach Co., 22 November 1992.

UF 40304 (skin, partial skeleton, spread wing). Female (probably immature), wing and tail moderately worn, no molt; found alive, Hollywood, Broward Co., 7 March 1998; brought to WCC where it died.

UF 42006 (complete skeleton). Adult male, wing and tail lightly worn, no molt, heavy fat; found with

fractured legs, Miami, Dade Co., 11 March 1998; brought to WCC where it was euthanized.

This species is generally rare to casual, sometimes locally uncommon, in the winter in Florida. UF 40304 and UF 42006 are the first specimens for Broward Co. and Dade Co., respectively, with ca. 30 others from the state through 1991.

BLACK SCOTER *Melanitta nigra americana*.

UF 40629 (skin, partial skeleton, spread wing). Immature female, wing slight wear; tail worn, light molt on head only; found dead by Dale Henderson, ca. 2 miles northeast of the #4 Bridge on the State Route 24 causeway to Cedar Key, Levy Co., 14 December 1998. It had been shot.

UF 41048 (skin and spread wing). Immature female, wing light wear, tail very worn, light molt on head and neck only; found dead by Greg McDermott and Rex Rowan, Huguenot County Park, Duval Co., 17 December 1999; blunt trauma to the neck, perhaps from flying into a wire.

Black Scoters are rare and irregular in coastal Florida. Approximately eight specimens were known through 1991. UF 40629 is the first specimen from Levy Co.

WHITE-WINGED SCOTER *Melanitta fusca deglandi*.

UF 40555 (skin, partial skeleton, spread wing). Emaciated immature female, fresh plumage, light body molt; found alive, Lighthouse Point, Broward Co., 11 November 1998; brought to WCC, where it died.

White-winged Scoters are rare to very rare and irregular in coastal Florida. Only four specimens were known from the state through 1991. This is the first record and specimen from Broward Co.

"FLORIDA" SNAIL KITE *Rostrhamus sociabilis plumbeus*.

UF 40329 (skin, partial skeleton, spread wing). Adult female in breeding condition, found dead on nest by Victoria Drietz (University of Florida), Water Conservation District 3A, Dade Co., 11 April 1998; wounds consistent with being shot.

UF 41836 (skin, partial skeleton, spread wing). Immature female, found emaciated, Merritt Island, Brevard Co., 14 May 2000; dead on arrival at FWH.

This subspecies, also found in Cuba, is considered Endangered by the USFWS. A few specimens and several egg sets were collected in Florida in the late nineteenth and early twentieth centuries, but there are no published records of any collected or salvaged more recently. An

unpublished specimen (UCF 2351), also from May 2000, was found injured in Broward Co. (Bruce Anderson, in litt.). Bennetts et al. (1998) reported another Snail Kite gunshot victim.

COOPER'S HAWK *Accipiter cooperii*.

UF 41003 (skin). Adult female, found alive by Jason Pobac, Pompano Beach, Broward Co., 3 August 1999; euthanized 5 August at WCC; necrotic wound to lower back.

This bird was probably a local breeder. One oviduct was convoluted, indicating that the bird had bred in 1999, although the ovaries appeared somewhat underdeveloped for a bird that had recently bred. The date is probably too early for a migrant (earliest Florida migrants on 15 August). In addition, the specimen was in heavy pre-basic molt (remiges, rectrices, and body tracts), which in Cooper's Hawk appears to occur prior to fall migration (Rosenfield and Bielefeldt, 1993). Cooper's Hawks are rare to uncommon breeders in Florida, south to Glades and Lee Cos. (Pranty, 1999). This is the southernmost breeding evidence in Florida.

BROAD-WINGED HAWK *Buteo platypterus platypterus*.

UF 40247 (skin, partial skeleton, spread wing). Immature male, no molt; found dead on road by Rodney Felix, Orchard Pond Road at Old Bainbridge Road, Leon Co., 4 August 1998.

UF 40752 (skin, partial skeleton, spread wing). Adult female, found alive by Ken Sabourin, North Miami Beach, Dade Co., 8 March 1999; died 9 April at WCC.

UF 41139 (complete skeleton, spread wing). Immature male, hit by a car, found alive by Laura Rider, St. James City, Lee Co., 13 November 1999; died 5 December at CROW.

UF 41140 (skin, partial skeleton). Immature female, hit by car, found alive, Sanibel, Lee Co., 4 December 1999; died 6 December at CROW.

UF 42046 (complete skeleton, wing). First-winter male, found injured, Sanibel Island, Lee Co., 10 March 2000; died at CROW.

This hawk is an uncommon summer resident in the panhandle and northern Florida and a rare to very rare winter resident north of Everglades National Park. It can be abundant, however, during migration (e.g., autumn along the coasts) (Robertson and Woolfenden, 1992). The juvenile specimen from Leon Co. (UF 40247) was probably from a local nest, as fall migration typically does not begin until much later than 4 August. The ground color of underparts of UF 40247 is a rich buff (Munsell

10YR 7/6 yellow), much brighter than in other immature specimens in our collection. Although this plumage is said to be diagnostic of immature *B. p. antillarum* (Friedmann, 1950: 323), a small resident race in the southern Lesser Antilles, the possibility of this race reaching Florida seems slight. The color of UF 40247 is in the range of overlap between the subspecies breeding in Florida (*B. p. platypterus*) and *B. p. antillarum*. The richness of buff color in juvenile Broad-winged Hawks appears to vary within subspecies.

SHORT-TAILED HAWK *Buteo brachyurus fuliginosus*.

UF 40124 (skin, complete skeleton, spread wing). Adult female, dark morph, found injured on an unknown date; brought to CRRC, where it died; received at UF in February 1998. The exact locale where it was found is not known, although nearly all birds brought to CRRC are from the Boca Raton/Ft. Lauderdale area (Palm Beach and Broward Cos.). This non-breeding female had active wing molt, worn rectrices, and light body molt. It apparently had been shot.

UF 41630 (complete skeleton, spread wing). This adult light morph female was found with a broken ulna and radius in 1998 or 1999 and taken to the Miami Museum of Science Bird of Prey Center. After the wing healed, it was released at Lake Walk-in-the-Water (Polk Co.) on 27 May 2000. It was found dead and emaciated on 16 June 2000. Although the bones had healed, the bird probably could not hunt well.

This species is a rare to uncommon breeder in peninsular Florida (Robertson and Woolfenden, 1992). Among ca. 30 specimens for Florida through 1991, at least one was from Broward Co., but none was from Palm Beach Co.

"AUDUBON'S" CRESTED CARACARA *Caracara cheriway audubonii*.

UF 22223 (skin). Female, found dead at the junction of State Routes 29 and 78 in Big Cypress National Preserve, Glades Co., on 4 January 1992.

UF 41161 (skin, partial skeleton, spread wing). Adult male, found in Sanibel, Lee Co., 10 January 2000; brought to CROW, where it died 24 November 2000. It had a healed fracture of the right humerus.

UF 42180 (complete skeleton). Adult male, active molt wing (primaries), tail, and body molt, found dead on State Route 192 by Jeff Ripple, 1.4 mi. west of Interstate 95, West Melbourne, Brevard Co., 2 August 2001.

The Crested Caracara is a generally rare and local

breeding resident in south-central Florida, north to Brevard Co. The Florida population is considered Threatened by the USFWS.

MERLIN *Falco columbarius columbarius*.

UF 40971 (skin, partial skeleton). Adult female, found Lee Co., 29 October 1999; brought to CROW, where it died.

UF 42034 (complete skeleton). Adult female, found Indian Harbor Beach, Brevard Co., 6 February 2001; brought to FWH, where it died.

In Florida, Merlins are rare to uncommon fall migrants and occasional to rare in the winter.

PEREGRINE FALCON *Falco peregrinus anatum*.

UF 42034 (skin, partial skeleton). Adult female, found with broken wing in Ft. Lauderdale, Broward Co., 31 January 2001; brought to CROW, where it died.

Peregrine Falcons are rare as winter residents in Florida and were, until recently, considered Threatened by the USFWS.

BLACK RAIL *Laterallus jamaicensis jamaicensis*.

UF 39722 (skin, complete skeleton, spread wing). Adult female, found dead by Rex and Graham Rowan, U.S. 441 in Paynes Prairie State Preserve, Alachua Co., 5 September 1997. Although the oviduct was convoluted, indicating recent breeding, the remiges were moderately fresh and not molting, indicating it had probably already undergone pre-basic molt. Therefore, this specimen could represent either a migrant or local breeder.

The seasonal distribution of this rare and secretive species is not well understood in North America (Eddleman et al., 1994). In Florida, the small resident population is augmented by migrants and possibly winter visitors, although the timing of migration is not known (Stevenson and Anderson, 1994). This is the first Alachua Co. specimen.

PURPLE SWAMPHEN *Porphyrio porphyrio poliocephalus*.

UF 40766 (skin, partial skeleton, spread wing: Fig. 4). First-basic female in very worn plumage, found weak by James Parker, Pembroke Pines, Broward Co., 31 May 1999; died same day at WCC.

A population of this widespread and highly variable Old World species (Taylor, 1998) has recently become established in Pembroke Pines (Pranty, 2000). In 1999, the population numbered 125 and breeding was confirmed. UF 40766 is the second specimen for Florida;

a specimen found dead in February 1999 was donated to Archbold Biological Station (Pranty, 2000). Based on plumage and skin measurements, the subspecies appears to be *P. p. poliocephalus* of the Indian subcontinent and southeast Asia (Taylor, 1998).

WHOOING CRANE *Grus americana*.

UF 40248-40299 (one skin and partial skeleton, 49 complete or partial skeletons, 2 complete skeletons and spread wings). UF has been receiving the remains of Whooping Cranes that have died as part of the USFWS/FFWCC reintroduction program in Osceola Co. (Nesbitt et al., 1997). Because most of the carcasses are badly damaged (from combinations of bobcat predation, necropsies, and decomposition), nearly all have been prepared as skeletons.

BLACK-BELLIED PLOVER *Pluvialis squatarola*.

UF 39977 (partial skeleton, spread wing). Unknown sex (all internal organs consumed by maggots), basic plumage, no wing or tail molt; found dead by Lora Smith (U.S. Geological Survey), U.S. 441 in Paynes Prairie State Preserve, Alachua Co., 18 May 1999.

Black-bellied Plovers are common along the Florida coast in winter and during migration. Although generally rare inland, migrants can occasionally occur there in large numbers. This is the first specimen of this species for any non-coastal county in Florida and the third record for Alachua Co. (Alachua Audubon Society and Florida Museum of Natural History, 1997).

SNOWY PLOVER *Charadrius alexandrinus nivosus*.

UF 39977 (skin, partial skeleton, spread wing). Immature female, plumage fresh, light molt on head, no other molt; found dead on beach by Bob Duncan, Gulf Islands National Seashore, Escambia Co., 13 August 1997.

UF 41119 (skin, partial skeleton). Adult female, plumage lightly worn, no molt; found sick by David Burr, Tigertail Beach, Marco Island, Collier Co., 9 November 1999; died same day at CSWF; necrotic wound on torso.

This species, listed as Threatened in the United States (USFWS), is a rare to uncommon breeder on Florida's Gulf Coast. Only eight previous specimen locales were known from Florida through 1991, including one from Marco Island (Collier Co).

PURPLE SANDPIPER *Calidris maritima*.

UF 40450 (skin, partial skeleton). Adult female,

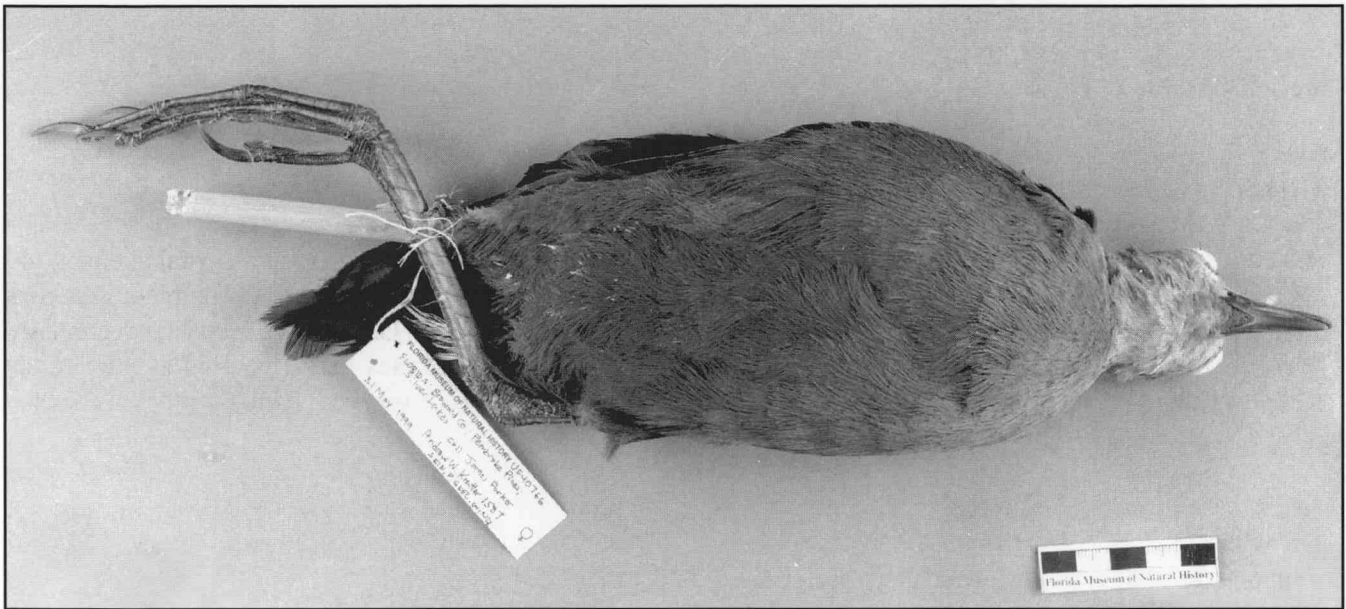


Figure 4. *Porphyrio porphyrio*, UF 40766, skin (Fig. 4A, top) and close-up of head (Fig. 4B, bottom). The bill of this large-bodied rail is very large and even-colored (red in life) with an arching culmen. In this subspecies (*P. p. poliocephalus*) the head is paler and grayer than the bluish body. The only other vaguely similar species in Florida is the much smaller *Porphyryla martinica* (Purple Gallinule), which has a smaller bill, a pale blue shield basal to the straighter culmen, a yellow bill tip, thinner tarsi, and a head that is dark purple-blue like the body.



plumage fresh, light molt on throat, no other molt; found dead on the pier by David Cole, Ft. Clinch State Park, Nassau Co., 16 December 1998.

Purple Sandpipers are uncommon winter residents in northeast Florida. Surprisingly, this is the first specimen for Nassau Co., where the species is regular. There were only seven specimens for Florida through 1991.

RED-NECKED PHALAROPE *Phalaropus lobatus*.

UF 40995 (skin, partial skeleton). Emaciated juvenile male, plumage fresh, no molt; attacked by a cat and found alive, presumably in the vicinity of Melbourne, Brevard Co., 26 October 1999; died next day at FWH.

This species is a very rare migrant and winter visitor, particularly offshore. None of the ca. 10 previous specimens for Florida (through 1991) was from Brevard Co.

POMARINE JAEGER *Stercorarius pomarinus*.

UF 40753 (skin, partial skeleton, spread wing). Probable first-summer female, heavy molt in secondaries and rectrices, moderate molt in body tracts; found alive, Dania Pier, Broward Co., 13 May 1999; euthanized on arrival at WCC; severe throat lacerations, probably from a fish hook.

This jaeger is fairly common in migration off



Figure 5. *Larus fuscus*. UF 40678, skin and spread wing. This first-winter bird is similar to several other large species of gull, especially *L. argentatus* (Herring Gull) and *L. marinus* (Great Black-backed Gull). Particularly noticeable on *L. fuscus* is the uniform appearance of the remiges and wing coverts. In *L. argentatus* the inner primaries are much paler than the outer. In *L. marinus* the feathers of the wing coverts and mantle have dark centers with pale edges, creating a checkered appearance.

Florida's east coast. There were only 12 previous specimens from Florida through 1991.

LESSER BLACK-BACKED GULL *Larus fuscus*.

UF 40618 (skin, partial skeleton, spread wing: Fig. 5). First-winter female, plumage moderately worn, no molt; found alive but emaciated, Florida Turnpike in Pompano Beach, Broward Co., 17 January 1999; died at CRRC; intestines with large tumor.

Although wintering populations have increased dramatically in recent decades along the east coast of the United States, only five previous specimens are from Florida (including an unpublished specimen [UCF 2274], 5 April 1999, from Brevard Co.; Bruce Anderson in litt.), and none from Broward Co.

GREAT BLACK-BACKED GULL *Larus marinus*.

UF 40385 (skin, partial skeleton, spread wing). First-winter male, wing and tail worn, not molting, scattered

body molt; found alive, Hillsboro Beach, Broward Co., 21 March 1998; died at WCC.

This gull is fairly common in northeast Florida and casual to rare in south Florida. There were only 14 Florida specimens through 1991. UF 40385 is the southernmost specimen from the state and the first for Broward Co.

BLACK-LEGGED KITTIWAKE *Rissa tridactyla tridactyla*.

UF 40354 (skin, partial skeleton, spread wing). First-winter male, plumage lightly worn, no molt; found alive in the vicinity of Flagler Beach, Flagler Co., probably in late 1997; died at Flagler Wildlife Hospital.

This gull is a rare winter visitor to Florida, with about 9 specimens through 1991. This is the first record for Flagler Co.

ROSEATE TERN *Sterna dougallii dougallii*.

UF 40983 (skin, partial skeleton, spread wing: Fig. 6). Subadult male, active wing, tail, and body molt,

apparently changing into second basic plumage; found with a broken wing, Hollywood, Broward Co., 17 October 1999; euthanized on arrival at WCC.

The Roseate Tern has two disjunct breeding populations in North America: about 3500 pairs of the northeastern population, federally list as Endangered, breed from Nova Scotia south to Long Island, New York (Gochfeld et al., 1998); and about 150-300 pairs of the Caribbean population, federally listed as Threatened, nest in the Florida Keys (Zambrano et al., 2000). UF 40983 could have originated from either population. This is the first specimen for Florida north of the Florida Keys, where its status is uncertain, especially because of difficulty distinguishing it in the field from Common (*S. hirundo*), Arctic (*S. paradisaea*), and Forster's terns (*S. forsteri*).

BRIDLED TERN *Sterna anaethetus recognita*.

UF 40303 (skin, partial skeleton, spread wing). Adult male, not molting, wing and tail fresh, except three outer rectrices quite worn; found alive but missing most of mandible, Pompano Beach, Broward Co., 17 May 1998; died at the WCC.

UF 41611 (complete skeleton, spread wing). First-winter female, no molt; found weak at Gumbo Limbo Nature Center, Boca Raton, Palm Beach Co., 6 January 1999; died at CRRC.

UF 41612 (skin). First-winter male, no molt; found emaciated and weak in Ft. Lauderdale, Broward Co., 7 January 1999; died next day at WCC.

Although fairly numerous offshore during the summer, this species is rarely seen from shore and only

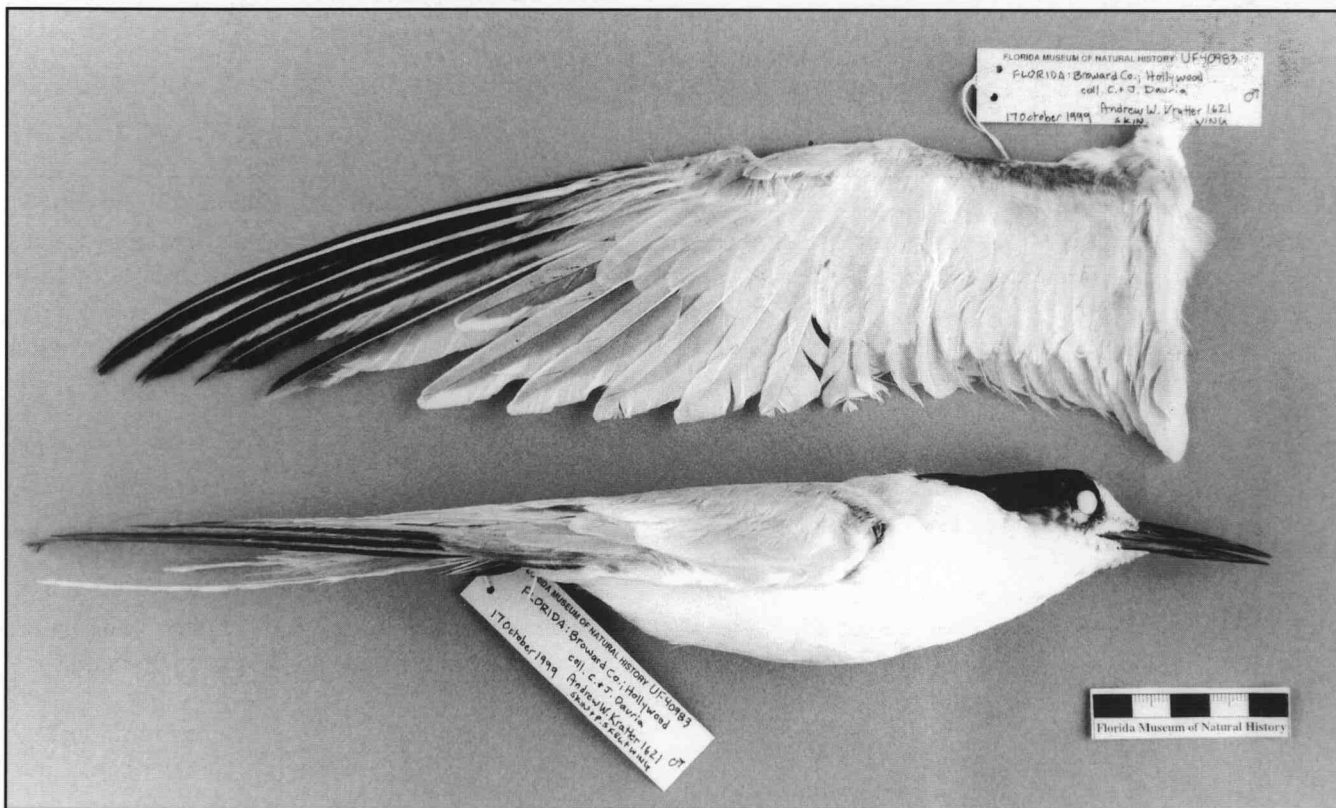


Figure 6. *Sterna dougallii*, UF 40983, skin (top), and spread wing (bottom). This sub-adult non-breeding-plumage bird is similar to several other medium-sized species of *Sterna* in Florida, particularly the more common *S. hirundo* (Common Tern) and *S. forsteri* (Forster's Tern), and the more rare *S. paradisaea* (Arctic Tern). In non-breeding plumages as compared to *S. dougallii*: *S. forsteri* has a black ear patch that does not circle around the nape and the bill is thicker; *S. hirundo* has the black in the outer primaries restricted to the tips of the feathers, the inner primaries often are dark, creating a dark wedge; and *S. paradisaea* has almost wholly white outer primaries with pale gray tips, and a shorter bill. Uniquely among these species, *S. dougallii* has mostly dark outer primaries and wholly white inner primaries.



Figure 7. *Brachyramphus perdix*, UF 39297. Notice the long bill, black nape, and prominent white eye-crescents. Among *Brachyramphus* murrelets in basic plumage, these features are diagnostic for *B. perdix*, the only species recorded from Florida.

occasionally found during winter. Through 1991, only five winter specimens were known from Florida.

LONG-BILLED MURRELET *Brachyramphus [marmoratus] perdix*.

UF 39297 (skin, partial skeleton: Fig. 7). Male, fresh basic plumage, no molt; found dead by John Tipton, about 4 km west of St. Petersburg, Pinellas Co., in the Gulf of Mexico, 28 November 1994. The low mass (154 g), lack of fat, and reduced pectoral muscles indicated that it had probably been sick for some time; there was no sign of injury.

This is the third specimen of this species for Florida. The first two also were from Pinellas Co.—one (GEW 5848) found dead on Honeymoon Island in 1986 (Hoffman and Woolfenden, 1988) and another (UCF 2081) found dead off Mullet Key in 1993 (Anderson, 1995). The only other record is one photographed off Cedar Key, Levy Co., in March 1994 (Muschlitz, 1995).

Brachyramphus perdix, which breeds along the Pacific coast of northeast Asia, was recently split from the North American *B. marmoratus* (Friesen et al., 1996; AOU, 1998). All verified North American records of *Brachyramphus* away from the Pacific coast are of *B. perdix* (Sealy et al., 1982; Mlodinow, 1997).

WHITE-CROWNED PIGEON *Columba leucocephala*.

UF 40335 (complete skeleton, spread wing). Female that recently bred, no molt; found alive with severe head trauma, Ft. Lauderdale, Broward Co., 8 June 1998; euthanized at WCC.

In Florida, this species only rarely nests away from the Florida Keys and is not known to breed north of Dade Co. This is the first specimen for Broward Co.

EURASIAN COLLARED-DOVE *Streptopelia decaocto*.

From 1997 through 1999, we received and prepared 58 specimens (numerous skins, skeletons, and spread

wings) of this non-native, recent immigrant to Florida (Romagosa and McEneaney, 2000). Most specimens are from Broward and Palm Beach Cos., but others are from Dade, Pinellas, Levy, and Santa Rosa Cos.

WHITE-WINGED DOVE *Zenaida asiatica*.

UF 40660 (skin, partial skeleton, spread wing). Immature female (bursa small), active wing and body molt, tail worn; received March 1999 without data from CRRC.

UF 41613 (complete skeleton, spread wing). Adult female, active molt in primaries, secondaries, and body tracts, no tail molt; received March 1999 without data from CRRC. Most birds from this clinic are from Broward or Palm Beach Co.

Zenaida asiatica has become common in southern Florida, with populations probably originating from both introductions and natural colonization from the West Indies in the last few decades. There are at least 20 previous specimens from Florida.

MONK PARAKEET *Myiopsitta monachus*.

UF 40236-40244, 40659. As part of her Master's thesis research, UF student A. Van Doorn has collected several Monk Parakeets in Homestead, Dade Co., Florida. Although this species is by far the most common and widespread introduced psittacid in Florida, only three specimens—from Broward, Dade, and Hillsborough Cos.—were listed through 1991.

"ANTILLEAN" SHORT-EARED OWL *Asio flammeus domingensis*.

UF 41995 (complete skeleton, skin, spread wing). Adult female, very emaciated, plumage quite worn, with limited body molt in the nape and back; found by FFWCC personnel, west of Sunrise, Broward Co., 16 March 2001; died same day at WCC.

This species is a very rare winter resident in Florida, represented by the widespread, holarctic nominate subspecies in most of Florida and by *A. f. domingensis* in the Keys. The latter form was previously known only from the Greater Antilles; since 1978, however, it has been found regularly in the Florida Keys, with at least eight specimens salvaged since 1990 (Hoffman et al., 1999). It had not been recorded away from the Keys until now. The measurements and plumage characters (see Hoffman et al., 1999) of UF 41995 indicate that it is *A. f. domingensis*: the mantle feathers are mostly brown with narrow tawny edges (mantle feathers with brown central stripe and broad tawny edges in *A. f. flammeus*),

streaking on the lower breast and belly is lacking (streaking present in *A. f. flammeus*), and the wing is short (flattened wing chord = 302 mm vs. 308-325 mm in *A. f. flammeus*). UF 41995 is the first specimen of any Short-eared Owl from Broward Co.

LESSER NIGHTHAWK *Chordeiles acutipennis acutipennis*.

UF 39661 (complete skeleton, spread wing). First-winter male (sexed by plumage), found dead, Plantation Key, Monroe Co., 7 January 1981; not prepared until 1997.

UF 40464 (skin, partial skeleton, spread wing; Fig. 8). First-winter male, found dead by Roy Ozmore, north rim of Paynes Prairie State Preserve, Alachua Co., 11 January 1999.

This species is a rare migrant and very rare winter visitor to Florida, mainly in the south. The only previous specimens were one collected on St. George Island, Franklin Co., in 1976 (Tall Timbers Research Station #3482) and one found dead (UCF 2170) in Pembroke Pines, Broward Co., January 1997 (Pranty, 1997c). UF 40464 is the first documented record for Alachua Co.

WHITE-COLLARED SWIFT *Streptoprocne zonaris pallidifrons*.

UF 38059 (partial skeleton, skin; Fig. 9). Female, overall body molt, no fat, wing chord 194 mm; found alive, Lauderdale Lakes, Broward Co., 15 September 1994 by Alex Tosi and Wally George; died two days later at WCC.

The usual range of *S. zonaris* extends from the West Indies and northeastern Mexico south to Bolivia and northern Argentina. UF 38059 is of the race *S. z. pallidifrons*, endemic to the West Indies. The gray-white forehead and the thin white line bounding the dark area in front of the eye (Fig. 9) are diagnostic of this race (Parkes, 1993). The wing chord of UF 38059 falls within the range for *S. z. pallidifrons* (193-206.5 mm, n = 17; Parkes, 1993), and well outside the range for *S. z. mexicana* (206.5-217 mm, n = 20; Parkes, 1993), the race of Mexico and northern Central America. The Florida Ornithological Society Records Committee has accepted this specimen as documenting the first known occurrence of *S. z. pallidifrons* in Florida (Anderson, 1996). This is also the first specimen and record of *S. z. pallidifrons* for North America. The two previous specimens of *S. zonaris* from North America are both *S. z. mexicana* (Hardy and Clench, 1982, UF 20620; Lasley, 1984; Parkes, 1993). The northernmost island in the usual range of *S. z. pallidifrons* is Cuba, about 300 km south



Figure 8. Wings of *Chordeiles* nighthawks. Top, *C. acutipennis* (UF 40464), bottom, *C. minor* (UF 41850). Notice the smaller size, the more rounded tip, and especially the more distal position of the white wing stripe in *C. acutipennis*.

of Broward Co. No known weather event provides a simple explanation for the appearance of this specimen in Florida. The only major weather disturbance in the Caribbean near this time was Tropical Storm Debbie, which passed from east to west over the Lesser Antilles on 10 September and dissipated south of Hispaniola the next day.

COMMON MYNA *Acridotheres tristis*.

UF 41394 (skin). Adult female, found alive, presumably Boca Raton/Ft. Lauderdale (Broward or Palm Beach Co.), 26 March 1999; died at CRRC.

This species, native to south Asia, has been established on the southeast coast of Florida since at least the mid-1980s. There are no previously published reports of specimens for Florida.

CEDAR WAXWING *Bombycilla cedrorum*.

UF 41998 (skin). Adult male, found alive, Turkey Creek Sanctuary, Palm Bay, Brevard Co., 23 December 2000; died at FWH.

This specimen is unusual in that the waxy red tips typical of the secondaries and tertiaries are also present on all but one (L2) of the rectrices (although rectrices R4-6 are missing) and on the third primary. The number and placement of waxy red tips on the secondaries and tertiaries are quite variable in Cedar Waxwings, with males generally having more feathers with red tips than females of the same age class (Pyle, 1997; Witmer et al., 1997). Occasional variants have red tips on the primaries and/or rectrices (Yunick, 1970). For example, while banding over 500 waxwings, Myers and Myers (1967) found two individuals with waxy red tips on the rectrices. Yunick (1970) found one bird with waxy red tips on the rectrices while banding over 350 waxwings and three birds with that condition among 327 waxwing specimens at the American Museum of Natural History. One of the latter specimens (unsexed) also had three primaries with red wax tips. At UCF, a male (UCF 385) had red tips on some rectrices (Bruce Anderson, in litt.).

NASHVILLE WARBLER *Vermivora ruficapilla ruficapilla*.

UF 40455 (skin, partial skeleton). Hatching-year male, emaciated, found alive, Ft. Lauderdale, Broward Co., 22 October 1998; euthanized on arrival at WCC.

This species is a very rare to casual fall migrant in Florida, with only about 10 specimens for the state through 1991.

MAGNOLIA WARBLER *Dendroica magnolia*.

UF 40984 (skin). Hatching-year female, found alive by Ana Vizcaino, Boca Raton, Palm Beach Co., 24 September 1999; euthanized following day at WCC. The bird has an unusual tail, with rectrices L1, 2, 5, and 6 much longer than the corresponding feathers on the right side. No rectrices are sheathed. This may be a developmental abnormality rather than an unusual molt pattern.

This species is a regular but uncommon migrant, with fewer than 25 specimens for the state through 1991. This is the first specimen from Palm Beach Co.

BLACK-THROATED GREEN WARBLER *Dendroica virens*.

UF 40584 (skin). Hatching-year male, found with a fractured wing, presumably Boca Raton/Ft. Lauderdale area (Broward or Palm Beach Co.), 28 October 1998; died at CRRC.

UF 40998 (skin). After-hatching-year female, found stunned, by Craig Berry, Ft. Lauderdale, Broward Co.,

16 October 1999; died 18 October at WCC.

UF 41154 (skin). Hatching-year female, found injured in Pompano Beach, Broward Co., 4 November 1999; euthanized on arrival at WCC.

This is an uncommon migrant in Florida. There are no previous specimens for either Palm Beach Co. or Broward Co.

BAY-BREADED WARBLER *Dendroica castanea*.

UF 40904 (skin). Hatching-year male, found dead by Peggy Powell, Ponte Vedra Beach, St. Johns Co., 18 October 1998.

This species is an occasional to uncommon migrant in Florida, with ca. 20 specimens from the state through 1991. This is the first specimen from St. Johns Co.

CONNECTICUT WARBLER *Oporornis agilis*.

UF 40300 (complete skeleton). Female (adult?), found alive, presumably Boca Raton/Ft. Lauderdale area (Broward or Palm Beach Co.), spring, 1998?; died at CRRC.

UF 40301 (skin, partial skeleton). Female, Pompano Beach, Broward Co., 11 May 1998.

UF 40302 (skin, partial skeleton). Male, Hollywood, Broward Co., 10 May 1998.

UF 40650 (skin). Male; presumably Boca Raton/Ft. Lauderdale (Broward or Palm Beach Co.), spring 1998; died at CRRC.



Figure 9. *Streptoprocne zonaris*. Left to right: AMNH 166365, *S. z. pallidifrons*; UF 38059; AMNH 778260, *S. z. mexicana*. Note the whitish forehead, diagnostic of *S. z. pallidifrons*, on AMNH 166365 and UF 38059.

UF 40768 (skin, partial skeleton). Male, found with head trauma, Parkland, Broward Co., 2 May 1999; died 6 May at WCC.

UF 42211 (skin). Male, found with head trauma by Doug Nelson, Boca Raton, Palm Beach Co., 15 May 2001; died next day at WCC.

This species is an occasional to rare migrant in Florida. There were no specimens from Broward Co. through 1991.

LOUISIANA WATERTHRUSH *Seiurus motacilla*.

UF 40471 (skin). Male, struck window and died, Rainbow Springs State Park, Marion Co., 25 March 1992.

UF 42176 (skin). Hatching-year male, found dead, Jacksonville Zoo, Jacksonville, Duval Co., 19 July 2001.

This species is a rare breeder and migrant in Florida, with about 50 previous specimens through 1991. UF 40471 and 42176 are the first specimens for Marion Co. and Duval Co., respectively.

SCARLET TANAGER *Piranga olivacea*.

UF 40553 (skin). Hatching-year female, found alive by L. M. Bigger, Oakland Park, Broward Co., 13 October 1998; died 15 October at WCC.

This species is a rare migrant in Florida, represented by at least 19 specimens through 1991. This may be the first specimen from Broward Co.

"FLORIDA" GRASSHOPPER SPARROW *Ammodramus savannarum floridanus*.

UF 39334 (partial skeleton, flat skin). Female, found dead by Tylan Dean, Avon Park Air Force Range, Highlands Co., 20 August 1996.

UF 39366 (complete skeleton, spread wing). Fledgling, unknown sex, found dead on road by Tylan Dean, Avon Park Air Force Range, Highlands Co., 2 July 1996.

UF 40245 (skull, feathers). Unknown sex, found by Bill Pranty impaled on barbed-wired fence by Loggerhead Shrike (*Lanius ludovicianus*), Avon Park Air Force Range, Highlands Co., 22 July 1998.

UF 40326 (partial skeleton, flat skin). Adult female, found dead by Tylan Dean, Three Lakes Wildlife Management Area, Osceola Co., 22 February 1998; received necropsied.

This subspecies, endemic to grasslands in the central Florida peninsula, is federally listed as Endangered. The nominate subspecies is widespread in Florida as a winter resident.

ROSE-BREASTED GROSBEAK *Pheucticus ludovicianus*.

UF 40927 (skin, spread wing). Hatching-year male, found dead by Ed Bonahue, Alachua, Alachua Co., 17 October 1999.

UF 40994 (skin). Hatching-year male, found alive, vicinity of Melbourne, Brevard Co., 18 October 1999; died at FWH.

UF 42029 (complete skeleton, wing). Hatching-year bird, unknown sex (gonads decayed), found dead, Jacksonville, Duval Co., 23 October 2000.

This species is an uncommon migrant throughout Florida, with at least 15 specimens for the state through 1991. UF 40994 and UF 42029 are the first specimens for Brevard Co. and Duval Co., respectively.

SPOT-BREASTED ORIOLE *Icterus pectoralis*.

UF 40642 (complete skeleton, spread wing). Adult male, found alive, Deerfield Beach, Broward Co., 14 September 1998; euthanized at WCC.

UF 40658 (skin). Hatching-year male, juvenile plumage, found alive but emaciated, Boca Raton, Palm Beach Co., 16 October 1998; died at CRRC.

UF 41101 (skin). Adult female, breeding condition, found with broken wing and leg by C. Sergio, Hollywood, Broward Co., 24 November 1999; died same day at WCC.

This introduced species, native to southern Mexico and northern Central America, has been established in urban areas of southeast Florida since the late 1940s. There were about 14 specimens for Florida through 1991. UF 40658, a juvenile male, has underparts and head much more yellow than the juvenile depicted in Jaramillo and Burke (1999), which is labeled as subspecies *guttulatus*. The subspecific identity of Florida's population has not been established.

SHINY COWBIRD *Molothrus bonariensis minimus*.

UF 41263 (skin, partial skeleton). Adult male, trapped by Eric Tillman for USDA research on cowbirds, Micanopy, Alachua Co., 31 March 2000.

This species recently (first record in 1985) colonized Florida from the West Indies (Post et al., 1993). It has become locally common in southern Florida and is frequent along the Gulf Coast. The eight other Florida specimens are from St. Lucie Co. (UF 28299, Charleston Museum 1991.37.04) and Collier Co. (USF, GEW 5973-5978). This is the first Alachua Co. record.

HOUSE FINCH *Carpodacus mexicanus*.

UF 40764 (skin). Adult male, found dead by Graham Rowan, Gainesville, Alachua Co., 31 July 1999.

UF 41641 (skin). Adult male, testes enlarged, found alive but thin by Roland Born, Lauderdale Lakes, Broward Co., 24 April 2000; died 26 April at WCC.

Since the mid-1980s, this species, which colonized the state from introduced eastern populations farther north, has become common in parts of Florida (e.g., Alachua Co., pers. obs.). Evidence for breeding in south Florida, however, was lacking until 2000 (Bruce Anderson, in litt.). Only one specimen, a juvenile from Leon Co., was listed for Florida in 1994.

ACKNOWLEDGMENTS

We are especially grateful to the many wildlife rehabilitators who donated specimens to our museum, particularly Lisa Wood, Debbie Anderson, Judy LaRose (WCC), P. J. Deitschel and Anita Pinder (CROW), Laura Quinn (FKWBC), Joanna Fitzgerald (CSWF), Susan Small (FWH), and Cynthia Rohkamm (CRRC). We also thank the many private citizens and employees of governmental agencies who have donated specimens, either directly to us or through wildlife rehabilitation hospitals around the state. For research permits, we thank Brian A. Millsap of the FFWCC, Carmen Simonton of the USFWS, and Ken Litzenberger of the Lower Suwannee/Cedar Key National Wildlife Refuge. We thank George Barrowclough of the American Museum of Natural History for loan of specimens. For comments that improved the manuscript, we are grateful to Bruce H. Anderson and an anonymous reviewer. Marcus P. Tellkamp provided the Spanish abstract.

LITERATURE CITED

- Alachua Audubon Society and Florida Museum of Natural History. 1997. Birds of the Gainesville region, Florida: a checklist (5th ed.). Alachua Audubon Society and Florida Museum of Natural History, Gainesville, Florida.
- American Ornithologists' Union. 1998. Check-List of North American Birds. 7th Edition. American Ornithologists' Union, Washington, D.C.
- American Ornithologists' Union. 2000. Forty-second supplement to the Check-List of North American Birds. Auk 117: 847-858.
- Anderson, B. H. 1993. Ninth report of the Florida Ornithological Society Records Committee. Florida Field Naturalist 21: 86-91.
- Anderson, B. H. 1995. Eleventh report of the Florida Ornithological Society Records Committee. Florida Field Naturalist 23: 38-43.
- Anderson, B. H. 1996. Twelfth report of the Florida Ornithological Society Records Committee. Florida Field Naturalist 24: 122-134.
- Bennetts, R. E., M. R. Shannon, and W. M. Kitchens. 1998. Causes of mortality of post-fledgling juvenile and adult Snail Kites in Florida. Florida Field Naturalist 26: 84-87.
- Eddleman, W. R., R. E. Flores, and M. L. Legare. 1994. Black Rail (*Laterallus jamaicensis*). In The Birds of North America, No. 123 (A. Poole and F. Gill, eds.). Academy of Natural Sciences, Philadelphia, and American Ornithologists' Union, Washington, D.C.
- Friedmann, H. 1950. The birds of North and Middle America. Part XI. Bulletin of the United States National Museum 50.
- Friesen, V. L., A. J. Baker, and J. F. Piatt. 1996. Phylogenetic relationships within the Alcidae inferred from total molecular evidence. Molecular Biology and Evolution 13: 359-367.
- Gochfeld, M., J. J. Burger, and I.C.T. Nisbet. 1998. Roseate Tern (*Sterna dougallii*). In The Birds of North America, No. 370 (A. Poole and F. Gill, eds.). Academy of Natural Sciences, Philadelphia, and American Ornithologists' Union, Washington, D.C.
- Hardy, J. W., and M. H. Clench. 1982. First United States specimen of the White-collared Swift. American Birds 36: 139-141.
- Hoffman, W., and G. E. Woolfenden. 1988. A specimen of the Asiatic Marbled Murrelet (*Brachyramphus marmoratus perdix* [Pallas]) from Florida. Florida Field Naturalist 16: 37-38.
- Hoffman, W., G. E. Woolfenden, and P. E. Smith. 1999. Antillean Short-eared Owls invade southern Florida. Wilson Bulletin 111: 303-313.
- Jaramillo, A., and P. Burke. 1999. New World Blackbirds. Princeton University Press, Princeton, New Jersey.
- Lasley, G. W. 1984. First Texas specimen of the White-collared Swift. American Birds 38: 37-371.
- Mlodinow, S. G. 1997. The Long-billed Murrelet (*Brachyramphus perdix*) in North America. Birding 29: 461-475.
- Muschlitz, B. 1995. Asiatic Marbled Murrelet: first spring record in North America. Florida Field Naturalist 23:30-32.
- Myers, M. L., and J. Myers. 1967. Quantitative notes on the variation of wax on Cedar Waxwings (*Bombycilla cedrorum*). Kansas Ornithological Society Bulletin 18: 1.
- Nesbitt, S. A., M. J. Folk, M. G. Spaulding, J. A. Schmidt, S. T. Schwikert, J. M. Nicolich, M. Wellington, J. C. Lewis, and T. H. Logan. 1997. An experimental release of Whooping Cranes in Florida, the first three years. Proceedings of the North American Crane Workshop 7: 79-85.

- Parkes, K. C. 1993. Taxonomic notes on the White-collared Swift (*Streptoprocne zonaris*). *Avocetta* 17: 95-100.
- Post, W., A. Cruz, and D. B. McNair. 1993. The North American invasion pattern of the Shiny Cowbird. *Journal of Field Ornithology* 64: 32-41.
- Pranty, B. 1994. Summer report: June-July 1993. *Florida Field Naturalist* 22: 23-28.
- Pranty, B. 1997a. Summer report: June-July 1996. *Florida Field Naturalist* 25: 26-31.
- Pranty, B. 1997b. Fall report: August-November 1996. *Florida Field Naturalist* 25: 74-84.
- Pranty, B. 1997c. Winter report: December 1996-February 1997. *Florida Field Naturalist* 25: 111-116.
- Pranty, B. 1999. Summer report: June to July 1997. *Florida Field Naturalist* 27: 25-30.
- Pranty, B. 2000. Discovery, origin, and current distribution of the Purple Swamphen (*Porphyrio porphyrio*) in Florida. *Florida Field Naturalist* 28:1-11.
- Pyle, P. 1997. Identification guide to North American birds, part 1. Slate Creek Press, Bolinas, California.
- Robertson, W. B., Jr., and G. E. Woolfenden. 1992. Florida bird species; an annotated list. Florida Ornithological Society Special Publication no. 6, Gainesville.
- Romagosa, C. M., and T. McEneaney. 2000. Eurasian Collared-Dove in North America and the Caribbean. *North American Birds* 53: 348-353.
- Rosenfield, R. N., and J. Bielefeldt. 1993. Cooper's Hawk (*Accipiter cooperii*). In *The Birds of North America*, No. 75 (A. Poole and F. Gill, eds.). Academy of Natural Sciences, Philadelphia, and American Ornithologists' Union, Washington, D.C.
- Rowan, R. and M. Manetz. 1995. A birdwatcher's guide to Alachua County, Florida. Privately published by the authors.
- Sealy, S. G., H. R. Carter, W. D. Shuford, K. D. Powers, and C. A. Chase III. 1982. Long-distance vagrancy of the Asiatic Marbled Murrelet in North America, 1979-1989. *Auk* 99: 778-781.
- Stevenson, H. M., and B. H. Anderson. 1994. The birdlife of Florida. University Press of Florida, Gainesville.
- Taylor, P. B. 1998. Rails, a guide to the rails, crakes, gallinules and coots of the world. Yale University Press, New Haven, Connecticut.
- Winker, K. 2000. Obtaining, preserving, and preparing bird specimens. *Journal of Field Ornithology* 71: 250-297.
- Witmer, M. C., D. J. Mountjoy, and L. Elliot. 1997. Cedar Waxwing (*Bombycilla cedrorum*). In *The Birds of North America*, No. 309 (A. Poole and F. Gill, eds.). The Academy of Natural Sciences, Philadelphia, and the American Ornithologists' Union, Washington, D.C.
- Yunick, R. P. 1970. An examination of certain aging and sexing criteria for the Cedar Waxwing (*Bombycilla cedrorum*). *Bird-Banding* 41: 291-299.
- Zambrano, R., H. T. Smith, and M. Robson. 2000. Summary of breeding Roseate Terns in the Florida Keys: 1974-1998. *Florida Field Naturalist* 28: 64-68.

APPENDIX: List of birds acquired in Florida from January 1992 through May 2001, with a few specimens from later months. Nomenclature and sequence follows AOU 1998 and AOU 2000. Form: c skel = complete skeleton; p skel = partial skeleton. County: * = received at wildlife hospital in that county, but precise locale where found not known. Date given is date collected unless otherwise indicated; * = date died (usually in rehabilitation clinic); received = received at UF without data on when collected or died. Sex: M=males, F=female, U=unknown.

UF#	genus	species	form	county	year	date	sex
39612	<i>Podilymbus</i>	<i>podiceps</i>	skin	Brevard	1996	15 September	F
40448	<i>Podilymbus</i>	<i>podiceps</i>	c skel, wing	Broward	1998	10 October	F
40884	<i>Podilymbus</i>	<i>podiceps</i>	skin	Broward	1998	19 November	M
40754	<i>Podilymbus</i>	<i>podiceps</i>	c skel, wing	Broward	1998	13 September	M
41851	<i>Podilymbus</i>	<i>podiceps</i>	skin	Lee	2000	13 October	F
41913	<i>Podilymbus</i>	<i>podiceps</i>	c skel, wing	Monroe	1999	May	M
41159	<i>Podiceps</i>	<i>auritus</i>	p skel, skin, wing	Levy	2000	received	M
39995	<i>Calonectris</i>	<i>diomedea</i>	skin	Brevard	1996	07 October	M
39914	<i>Puffinus</i>	<i>gravis</i>	c skel	Brevard	1997	12 June	M
39962	<i>Puffinus</i>	<i>gravis</i>	p skel, skin, wing	Brevard	1997	11 June	F
39310	<i>Puffinus</i>	<i>gravis</i>	c skel	Martin	1993	16 June	M
39311	<i>Puffinus</i>	<i>gravis</i>	c skel	Martin	1993	16 June	M
40740	<i>Puffinus</i>	<i>gravis</i>	c skel, wing	St. Johns	1999	10 June	F
41628	<i>Puffinus</i>	<i>gravis</i>	skin, wing	St. Johns	2000	12 June	M
39963	<i>Puffinus</i>	<i>griseus</i>	p skel, skin, wing	Brevard	1997	09 June	F
41873	<i>Puffinus</i>	<i>griseus</i>	p skel, skin, wing	Lee	2000	13 July	M
39993	<i>Puffinus</i>	<i>griseus</i>	p skel, skin, wing	St. Johns	1997	10 June	U
40551	<i>Puffinus</i>	<i>puffinus</i>	p skel, skin, wing	Broward*	1998	received	F
39973	<i>Puffinus</i>	<i>puffinus</i>	p skel, skin, wing	Palm Beach	1997	21-22 November	F
40440	<i>Puffinus</i>	<i>lherminieri</i>	skin	no locale data	1998	10 December	F
40322	<i>Puffinus</i>	<i>lherminieri</i>	c skel	Atl. Ocean	1998	04 July	F
41824	<i>Puffinus</i>	<i>lherminieri</i>	skin	Brevard	2000	29 July	M
41823	<i>Puffinus</i>	<i>lherminieri</i>	p skel, wing	Brevard	2000	29 July	M
40761	<i>Puffinus</i>	<i>lherminieri</i>	c skel, wing	Broward	1998	11 August	M
40444	<i>Puffinus</i>	<i>lherminieri</i>	c skel	Palm Beach	1998	09 August	M
40099	<i>Puffinus</i>	<i>lherminieri</i>	c skel, wing	St. Johns	1995	01 August	F
39613	<i>Puffinus</i>	<i>lherminieri</i>	skin	St. Johns	1996	09 August	U
39959	<i>Puffinus</i>	<i>lherminieri</i>	p skel, skin, wing	St. Johns	1997	11 August	M
40486	<i>Puffinus</i>	<i>lherminieri</i>	skin	St. Johns	1998	05 August	F
40159	<i>Oceanites</i>	<i>oceanicus</i>	skin	St. Johns	1997	12 June	F
42053	<i>Oceanites</i>	<i>oceanicus</i>	p skel, skin, wing	Brevard	2001	09 May	M
42142	<i>Oceanites</i>	<i>oceanicus</i>	p skel, skin, wing	Palm Beach	2001	11 May	F
42051	<i>Oceanodroma</i>	<i>leucorhoa</i>	c skel, wing	Brevard	2001	03 May	M
42050	<i>Oceanodroma</i>	<i>leucorhoa</i>	c skel, wing	Brevard	2001	09 May	M
42052	<i>Oceanodroma</i>	<i>leucorhoa</i>	p skel, skin, wing	Brevard	2001	03 May	M
39369	<i>Oceanodroma</i>	<i>leucorhoa</i>	skin	Brevard	1997	11 June	M
42025	<i>Oceanodroma</i>	<i>leucorhoa</i>	p skel, skin, wing	Duval	2001	04 May	M
42027	<i>Oceanodroma</i>	<i>leucorhoa</i>	p skel, skin, wing	Duval	2001	04 May	F
39614	<i>Oceanodroma</i>	<i>leucorhoa</i>	skin	Duval	1996	31 May	F

UF#	genus	species	form	county	year	date	sex
42023	<i>Oceanodroma</i>	<i>leucorhoa</i>	c skel	St. Johns	2001	05 May	M
42026	<i>Oceanodroma</i>	<i>leucorhoa</i>	p skel, skin	St. Johns	2001	04 May	U
42024	<i>Oceanodroma</i>	<i>leucorhoa</i>	c skel	St. Johns	2001	05 May	F
22235	<i>Oceanodroma</i>	<i>leucorhoa</i>	skin	St. Johns	1992	23 May	U
22236	<i>Oceanodroma</i>	<i>leucorhoa</i>	skin	St. Johns	1992	26 May	F
39615	<i>Phaethon</i>	<i>lepturus</i>	skin	Brevard	1995	03 August	F
40589	<i>Phaethon</i>	<i>lepturus</i>	skin	St. Johns	1998	14 October	M
40996	<i>Phaethon</i>	<i>aethereus</i>	p skel, skin, wing	Brevard	1999	02 October	F
40628	<i>Sula</i>	<i>leucogaster</i>	p skel, skin, wing	Broward	1998	21 November	F
41610	<i>Sula</i>	<i>leucogaster</i>	p skel, wing	Broward	2000	03 May	F
41423	<i>Sula</i>	<i>leucogaster</i>	p skel, skin	Monroe	2000	10 May	M
40987	<i>Morus</i>	<i>bassanus</i>	c skel, wing	Broward*	1998	28 December	F
39616	<i>Morus</i>	<i>bassanus</i>	skin	Brevard	1996	11 October	M
42081	<i>Morus</i>	<i>bassanus</i>	c skel	Brevard	2001	14 May	F
40662	<i>Morus</i>	<i>bassanus</i>	c skel, wing	Broward	1998	28 December	F
40600	<i>Morus</i>	<i>bassanus</i>	c skel, wing	Broward	1999	11 March	F
41175	<i>Morus</i>	<i>bassanus</i>	skin, wing	Collier	2000	13 February	M
41792	<i>Morus</i>	<i>bassanus</i>	c skel, wing	Collier	2000	31 March	M
41639	<i>Morus</i>	<i>bassanus</i>	p skel	Lee	1999	05 December	F
41860	<i>Morus</i>	<i>bassanus</i>	c skel, wing	Lee	2000	28 December	F
42222	<i>Morus</i>	<i>bassanus</i>	c skel	Lee	2001	21 July	F
42223	<i>Morus</i>	<i>bassanus</i>	c skel	Lee	2001	30 May	M
42162	<i>Morus</i>	<i>bassanus</i>	c skel, wing	Levy	2001	20 July	F
40990	<i>Morus</i>	<i>bassanus</i>	c skel, wing	Palm Beach	1998	15 March	F
40919	<i>Pelecanus</i>	<i>erythrorhynchos</i>	c skel	Columbia	1999	03 February	F
40922	<i>Pelecanus</i>	<i>erythrorhynchos</i>	c skel	Dade	1999	04 March	F
40735	<i>Pelecanus</i>	<i>erythrorhynchos</i>	c skel	Lake	1999	18 March	M
40920	<i>Pelecanus</i>	<i>erythrorhynchos</i>	c skel	Monroe	1999	22 February	F
40921	<i>Pelecanus</i>	<i>erythrorhynchos</i>	c skel	Orange	1999	12 January	F
40734	<i>Pelecanus</i>	<i>erythrorhynchos</i>	p skel, wing	Orange	1999	8 January	M
40750	<i>Pelecanus</i>	<i>erythrorhynchos</i>	c skel, wing	Orange	1999	8 February	F
40923	<i>Pelecanus</i>	<i>erythrorhynchos</i>	c skel	Orange	1999	10 February	M
42082	<i>Pelecanus</i>	<i>occidentalis</i>	c skel	Broward	2001	11 May	M
39319	<i>Anhinga</i>	<i>anhinga</i>	p skel	Alachua	1996	06 December	M
40723	<i>Anhinga</i>	<i>anhinga</i>	c skel	Alachua	1999	14 January	M
40860	<i>Anhinga</i>	<i>anhinga</i>	c skel, wing	Alachua	1999	11 January	F
41060	<i>Anhinga</i>	<i>anhinga</i>	skin	Broward	1998	16 August	F
40165	<i>Anhinga</i>	<i>anhinga</i>	c skel, wing	Broward	1998	30 April	F
40166	<i>Anhinga</i>	<i>anhinga</i>	c skel	Broward	1998	12 July	F
41006	<i>Anhinga</i>	<i>anhinga</i>	skin	Broward	1998	13 September	F
40893	<i>Anhinga</i>	<i>anhinga</i>	wing	Collier	1999	27 September	F
40930	<i>Anhinga</i>	<i>anhinga</i>	wing	Collier	1999	26 September	M
40859	<i>Anhinga</i>	<i>anhinga</i>	c skel, wing	Collier	1999	01 October	M
40368	<i>Anhinga</i>	<i>anhinga</i>	c skel	Palm Beach	1998	04 June	F

UF#	genus	species	form	county	year	date	sex
41548	<i>Fregata</i>	<i>magnificens</i>	p skel, skin, wing	Monroe	2000	17 April	M
42006	<i>Botaurus</i>	<i>lentiginosus</i>	c skel	Dade	2001	11 March	M
40304	<i>Botaurus</i>	<i>lentiginosus</i>	p skel, skin, wing	Broward	1998	07 March	F
39916	<i>Botaurus</i>	<i>lentiginosus</i>	c skel	Palm Beach	1992	22 November	F
42030	<i>Ixobrychus</i>	<i>exilis</i>	c skel, wing	Alachua	2001	22 May	M
40664	<i>Ixobrychus</i>	<i>exilis</i>	c skel, wing	Alachua	1999	24 May	M
40679	<i>Ixobrychus</i>	<i>exilis</i>	skin	Alachua	1999	02 June	M
40336	<i>Ixobrychus</i>	<i>exilis</i>	p skel, skin, wing	Broward	1998	03 March	F
41906	<i>Ixobrychus</i>	<i>exilis</i>	skin	Broward	2000	08 March	U
41898	<i>Ixobrychus</i>	<i>exilis</i>	c skel, wing	Broward	2000	12 March	M
40883	<i>Ixobrychus</i>	<i>exilis</i>	skin	Dade	1999	18 April	M
41847	<i>Ixobrychus</i>	<i>exilis</i>	skin	Lee	2000	01 November	M
41852	<i>Ixobrychus</i>	<i>exilis</i>	skin	Lee	2000	28 August	M
40632	<i>Ardea</i>	<i>herodias herodias</i>	wing	Broward	1999	04 January	M
41629	<i>Ardea</i>	<i>herodias occidentalis</i>	c skel	Dade	2000	07 March	M
40814	<i>Ardea</i>	<i>herodias occidentalis</i>	p skel, skin	Palm Beach	1999	13 May	M
39314	<i>Ardea</i>	<i>alba</i>	c skel	no locale data	1997	received	U
41821	<i>Ardea</i>	<i>alba</i>	c skel	Dade	2000	21 November	M
39323	<i>Ardea</i>	<i>alba</i>	c skel	Monroe	1995	September	M
41949	<i>Ardea</i>	<i>alba</i>	c skel, wing	Palm Beach	1998	04 September	U
40992	<i>Ardea</i>	<i>alba</i>	c skel, wing	Palm Beach	1998	16 December	M
40367	<i>Ardea</i>	<i>alba</i>	c skel	Palm Beach	1998	29 July	M
40325	<i>Ardea</i>	<i>alba</i>	c skel	Palm Beach	1998	*16 July	F
40155	<i>Egretta</i>	<i>thula</i>	p skel, wing	Alachua	1998	13 April	M
40730	<i>Egretta</i>	<i>thula</i>	c skel	Broward	1999	21 June	M
41846	<i>Egretta</i>	<i>thula</i>	c skel	Broward	2000	02 August	M
40861	<i>Egretta</i>	<i>caerulea</i>	c skel, wing	Broward	1998	06 October	M
40759	<i>Egretta</i>	<i>caerulea</i>	c skel	Broward	1998	24 September	M
41802	<i>Egretta</i>	<i>tricolor</i>	c skel	Collier	2000	31 January	M
40866	<i>Egretta</i>	<i>tricolor</i>	c skel, wing	Dade	1999	11 May	M
41803	<i>Bubulcus</i>	<i>ibis</i>	c skel	Collier	2000	24 January	M
40857	<i>Bubulcus</i>	<i>ibis</i>	c skel, wing	Palm Beach	1998	14 October	M
40757	<i>Bubulcus</i>	<i>ibis</i>	c skel	Palm Beach	1999	04 February	F
40896	<i>Butorides</i>	<i>virescens</i>	skin	Broward*	1998	06 September	M
41080	<i>Butorides</i>	<i>virescens</i>	skin	Broward*	1998	07 October	F
40864	<i>Butorides</i>	<i>virescens</i>	c skel, wing	Broward	1998	15 September	M
40353	<i>Butorides</i>	<i>virescens</i>	c skel	Broward	1998	25 May	M
40762	<i>Butorides</i>	<i>virescens</i>	c skel	Broward	1998	13 September	M
40548	<i>Butorides</i>	<i>virescens</i>	skin	Broward	1998	07 October	M
40872	<i>Butorides</i>	<i>virescens</i>	skin	Broward	1999	02 June	M
40841	<i>Butorides</i>	<i>virescens</i>	c skel, wing	Palm Beach	1998	14 September	M
40152	<i>Nycticorax</i>	<i>nycticorax</i>	p skel, wing	Alachua	1996	06 January	M
40758	<i>Nycticorax</i>	<i>nycticorax</i>	c skel	Broward	1998	11 October	M
40756	<i>Nycticorax</i>	<i>nycticorax</i>	c skel, wing	Broward	1998	27 August	F

UF#	genus	species	form	county	year	date	sex
40721	<i>Nycticorax</i>	<i>nycticorax</i>	c skel	Dade	1998	01 September	M
41012	<i>Nycticorax</i>	<i>nycticorax</i>	skin	Palm Beach	1999	16 October	F
40334	<i>Nyctanassa</i>	<i>violacea</i>	c skel	Broward	1998	06 August	M
40763	<i>Nyctanassa</i>	<i>violacea</i>	c skel	Broward	1998	19 August	F
40862	<i>Nyctanassa</i>	<i>violacea</i>	c skel, wing	Broward	1998	30 July	M
40348	<i>Eudocimus</i>	<i>albus</i>	c skel	Broward	1998	17 July	F
40755	<i>Eudocimus</i>	<i>albus</i>	c skel, wing	Broward	1998	02 September	M
41011	<i>Eudocimus</i>	<i>albus</i>	skin	Broward	1999	04 August	M
40863	<i>Eudocimus</i>	<i>albus</i>	c skel, wing	Broward	1999	27 January	M
41160	<i>Ajaia</i>	<i>ajaja</i>	p skel, skin, wing	Monroe	2000	02 February	M
39717	<i>Ajaia</i>	<i>ajaja</i>	p skel	St. Johns	1995	12 March	U
39617	<i>Mycteria</i>	<i>americana</i>	skin	Alachua	1996	08 October	F
40989	<i>Mycteria</i>	<i>americana</i>	c skel, wing	Alachua	1998	04 October	M
40139	<i>Mycteria</i>	<i>americana</i>	c skel	Brevard	1998	04 January	F
40592	<i>Mycteria</i>	<i>americana</i>	c skel	Charlotte	1993	23 March	U
40986	<i>Mycteria</i>	<i>americana</i>	c skel, wing	Collier	1999	03 November	F
40988	<i>Mycteria</i>	<i>americana</i>	c skel	Jefferson	1998	29 November	F
40924	<i>Mycteria</i>	<i>americana</i>	c skel	Lake	1999	16 April	M
40591	<i>Mycteria</i>	<i>americana</i>	c skel	Sarasota	1993	13 January	F
41946	<i>Coragyps</i>	<i>atratus</i>	c skel, wing	Broward	2001	28 February	U
40134	<i>Coragyps</i>	<i>atratus</i>	c skel	Pinellas	1996	15 January	F
39998	<i>Cathartes</i>	<i>aura</i>	p skel, skin, wing	Alachua	1998	15 February	M
41136	<i>Cathartes</i>	<i>aura</i>	c skel	Alachua	2000	31 January	F
40630	<i>Cathartes</i>	<i>aura</i>	c skel	Broward	1998	28 November	F
42003	<i>Anas</i>	<i>crecca</i>	c skel, wing	Brevard	2000	26 November	F
40728	<i>Anas</i>	<i>fulvigula</i>	c skel, wing	Palm Beach	1999	14 June	F
40555	<i>Melanitta</i>	<i>fusca</i>	p skel, skin, wing	Broward	1998	11 November	F
41048	<i>Melanitta</i>	<i>nigra</i>	skin, wing	Duval	1999	17 December	F
40629	<i>Melanitta</i>	<i>nigra</i>	p skel, skin, wing	Levy	1998	14 December	F
42005	<i>Lophodytes</i>	<i>cucullatus</i>	c skel, wing	Brevard	2000	23 December	M
40593	<i>Lophodytes</i>	<i>cucullatus</i>	c skel, wing	Alachua	1999	11 March	F
41928	<i>Lophodytes</i>	<i>cucullatus</i>	p skel, skin, wing	Alachua	2001	26 February	M
41113	<i>Mergus</i>	<i>serrator</i>	c skel, wing	Broward*	1999	received	F
41008	<i>Mergus</i>	<i>serrator</i>	skin	Broward	1998	15 December	F
40653	<i>Mergus</i>	<i>serrator</i>	p skel, wing	Broward	1998	18 December	F
40738	<i>Mergus</i>	<i>serrator</i>	c skel	Broward	1999	03 April	F
41912	<i>Mergus</i>	<i>serrator</i>	c skel, wing	Monroe	2000	21 April	F
40856	<i>Oxyura</i>	<i>jamaicensis</i>	c skel, wing	Broward	1998	26 November	F
41947	<i>Pandion</i>	<i>haliaetus</i>	c skel, wing	Alachua	1999	05 November	M
39752	<i>Pandion</i>	<i>haliaetus</i>	c skel	Brevard	1997	22 January	M
41833	<i>Pandion</i>	<i>haliaetus</i>	c skel, wing	Brevard	2000	15 May	M
41000	<i>Pandion</i>	<i>haliaetus</i>	skin	Broward	1998	17 July	M
41001	<i>Pandion</i>	<i>haliaetus</i>	skin	Broward	1998	29 October	F
41861	<i>Pandion</i>	<i>haliaetus</i>	c skel, wing	Lee	2000	24 December	M

UF#	genus	species	form	county	year	date	sex
41640	<i>Pandion</i>	<i>haliaetus</i>	p skel, wing	Monroe	2000	09 February	M
40599	<i>Pandion</i>	<i>haliaetus</i>	c skel, wing	Palm Beach	1998	31 October	M
39359	<i>Elanoides</i>	<i>forficatus</i>	wings, tail	Collier	1996	19 June	M
41836	<i>Rostrhamus</i>	<i>sociabilis</i>	p skel, skin, wing	Brevard	2000	14 May	F
40329	<i>Rostrhamus</i>	<i>sociabilis</i>	p skel, skin, wing	Dade	1998	11 April	F
39938	<i>Haliaeetus</i>	<i>leucocephalus</i>	c skel	no locale data	1995	received	F
41890	<i>Haliaeetus</i>	<i>leucocephalus</i>	p skel, skin, wing	Alachua	2001	06 February	F
41174	<i>Haliaeetus</i>	<i>leucocephalus</i>	skin, wing	Collier	2000	25 February	M
39942	<i>Haliaeetus</i>	<i>leucocephalus</i>	c skel	Columbia	1995	received	F
39915	<i>Haliaeetus</i>	<i>leucocephalus</i>	c skel	Lee	1993	28 March	F
39944	<i>Haliaeetus</i>	<i>leucocephalus</i>	c skel	Lee	1994	December	M
41626	<i>Haliaeetus</i>	<i>leucocephalus</i>	p skel, wing	Lee	1999	*20 September	F
39937	<i>Haliaeetus</i>	<i>leucocephalus</i>	c skel	Marion	1992	15 December	F
39943	<i>Haliaeetus</i>	<i>leucocephalus</i>	c skel	Marion	1995	15 April	U
39940	<i>Haliaeetus</i>	<i>leucocephalus</i>	c skel	Orange	1994	June	F
39322	<i>Haliaeetus</i>	<i>leucocephalus</i>	c skel	Polk	1995	04 January	F
39939	<i>Haliaeetus</i>	<i>leucocephalus</i>	c skel	Polk	1996	received	M
39941	<i>Haliaeetus</i>	<i>leucocephalus</i>	c skel	Putnam	1995	15 January	F
41099	<i>Accipiter</i>	<i>striatus</i>	skin, wing	no locale data	1999	23 November	F
41992	<i>Accipiter</i>	<i>striatus</i>	c skel	Alachua	2000	01 December	M
39860	<i>Accipiter</i>	<i>striatus</i>	skin	Alachua	1997	28 November	F
40598	<i>Accipiter</i>	<i>striatus</i>	c skel, wing	Alachua	1998	09 November	F
40587	<i>Accipiter</i>	<i>striatus</i>	skin	Broward	1998	16 December	F
41106	<i>Accipiter</i>	<i>striatus</i>	skin	Broward	1999	23 October	M
40879	<i>Accipiter</i>	<i>striatus</i>	skin	Broward	1999	23 January	F
41893	<i>Accipiter</i>	<i>striatus</i>	c skel, wing	Broward	2000	07 February	F
41075	<i>Accipiter</i>	<i>striatus</i>	skin	Levy	1999	30 November	F
40894	<i>Accipiter</i>	<i>striatus</i>	skin	Palm Beach	1998	23 November	M
39618	<i>Accipiter</i>	<i>cooperii</i>	skin	Alachua	1997	06 February	F
40309	<i>Accipiter</i>	<i>cooperii</i>	c skel	Alachua	1998	received	F
40331	<i>Accipiter</i>	<i>cooperii</i>	skin	Alachua	1998	14 August	F
41007	<i>Accipiter</i>	<i>cooperii</i>	skin	Alachua	1999	27 August	F
41054	<i>Accipiter</i>	<i>cooperii</i>	skin	Broward	1998	18 December	F
41003	<i>Accipiter</i>	<i>cooperii</i>	skin	Broward	1999	03 August	F
41107	<i>Accipiter</i>	<i>cooperii</i>	skin	Lee	1999	10 December	U
40917	<i>Accipiter</i>	<i>cooperii</i>	skin	St. Johns	1997	25 March	M
22230	<i>Buteo</i>	<i>lineatus</i>	skin	Alachua	1992	25 May	U
40160	<i>Buteo</i>	<i>lineatus</i>	skin	Alachua	1998	21 March	M
40865	<i>Buteo</i>	<i>lineatus</i>	c skel, wing	Alachua	1999	07 June	M
41004	<i>Buteo</i>	<i>lineatus</i>	skin	Broward	1999	10 February	M
40737	<i>Buteo</i>	<i>lineatus</i>	c skel, wing	Broward	1999	13 May	F
40752	<i>Buteo</i>	<i>platypterus</i>	p skel, skin, wing	Dade	1999	08 March	F
42046	<i>Buteo</i>	<i>platypterus</i>	c skel, wing	Lee	2000	10 March	M
41140	<i>Buteo</i>	<i>platypterus</i>	p skel, skin	Lee	1999	04 December	F

UF#	genus	species	form	county	year	date	sex
41139	<i>Buteo</i>	<i>platypterus</i>	p skel, wing	Lee	1999	13 November	M
40247	<i>Buteo</i>	<i>platypterus</i>	p skel, skin, wing	Leon	1998	04 August	M
40124	<i>Buteo</i>	<i>brachyurus</i>	c skel, skin, wing	Broward*	1998	received	F
41630	<i>Buteo</i>	<i>brachyurus</i>	c skel, wing	Polk	2000	16 June	F
39948	<i>Buteo</i>	<i>jamaicensis</i>	p skel, skin	Alachua	1998	12 January	M
41079	<i>Buteo</i>	<i>jamaicensis</i>	c skel	Alachua	1999	20 December	M
41002	<i>Buteo</i>	<i>jamaicensis</i>	skin	Lee	1999	20 May	F
22223	<i>Caracara</i>	<i>cheriway</i>	skin	Glades	1992	04 January	F
41161	<i>Caracara</i>	<i>cheriway</i>	p skel, skin, wing	Lee	1998	10 January	M
42180	<i>Caracara</i>	<i>cheriway</i>	c skel	Brevard	2001	02 August	M
40316	<i>Falco</i>	<i>sparverius</i>	c skel	Alachua	1996	16 December	M
41041	<i>Falco</i>	<i>sparverius</i>	skin	Alachua	1998	20 October	M
41030	<i>Falco</i>	<i>sparverius</i>	skin	Alachua	1999	12 November	M
39365	<i>Falco</i>	<i>sparverius</i>	p skel, flat skin	Bradford	1994	08 December	F
41794	<i>Falco</i>	<i>sparverius</i>	skin	Brevard	1999	16 November	M
40556	<i>Falco</i>	<i>sparverius</i>	skin	Broward	1998	30 November	F
40327	<i>Falco</i>	<i>sparverius</i>	skin	Broward	1998	23 April	F
40895	<i>Falco</i>	<i>sparverius</i>	skin	Broward	1999	21 February	M
41100	<i>Falco</i>	<i>sparverius</i>	skin	Broward	1999	07 November	F
41040	<i>Falco</i>	<i>sparverius</i>	skin	Broward	1999	12 October	F
41940	<i>Falco</i>	<i>sparverius</i>	c skel	Clay	1994	13 September	U
41163	<i>Falco</i>	<i>sparverius</i>	skin	Collier	1999	06 December	F
40979	<i>Falco</i>	<i>sparverius</i>	p skel, skin	Lee	1999	16 October	F
41848	<i>Falco</i>	<i>sparverius</i>	skin	Lee	2000	10 October	F
41822	<i>Falco</i>	<i>sparverius</i>	skin	Lee	2000	27 January	M
41855	<i>Falco</i>	<i>sparverius</i>	skin	Lee	2000	06 November	M
40389	<i>Falco</i>	<i>sparverius</i>	skin	Marion	1998	31 October	F
42034	<i>Falco</i>	<i>columbarius</i>	c skel	Brevard	2001	06 February	F
40971	<i>Falco</i>	<i>columbarius</i>	p skel, skin	Lee	1999	29 October	F
41943	<i>Falco</i>	<i>peregrinus</i>	p skel, skin	Broward	2000	13 January	F
37996	<i>Meleagris</i>	<i>gallopavo</i>	mount	Indian River	1993	Spring	M
40751	<i>Colinus</i>	<i>virginianus</i>	skin	Alachua	1999	25 January	M
39048	<i>Colinus</i>	<i>virginianus</i>	skin	Dixie	1996	05 May	M
39722	<i>Laterallus</i>	<i>jamaicensis</i>	c skel, skin, wing	Alachua	1997	05 September	F
40956	<i>Rallus</i>	<i>longirostris</i>	c skel	Broward	1998	30 October	F
41078	<i>Rallus</i>	<i>longirostris</i>	skin	Levy	1999	19 November	F
40583	<i>Rallus</i>	<i>elegans</i>	c skel, wing	Alachua	1998	20 December	F
40954	<i>Rallus</i>	<i>elegans</i>	c skel	Alachua	1998	31 December	M
40957	<i>Rallus</i>	<i>elegans</i>	c skel	Alachua	1999	24 April	M
40967	<i>Rallus</i>	<i>elegans</i>	c skel	Broward	1998	15 October	F
40955	<i>Rallus</i>	<i>elegans</i>	c skel	Broward	1999	16 February	F
40098	<i>Rallus</i>	<i>elegans</i>	c skel, wing	Collier	1994	21 March	M
40958	<i>Rallus</i>	<i>limicola</i>	c skel	Alachua	1999	20 September	F
40554	<i>Rallus</i>	<i>limicola</i>	p skel, skin, wing	Broward	1998	19 December	U

UF#	genus	species	form	county	year	date	sex
40333	<i>Rallus</i>	<i>limicola</i>	p skel, skin, wing	Levy	1998	11 September	M
39723	<i>Rallus</i>	<i>limicola</i>	p skel, skin, wing	Santa Rosa	1997	05 September	M
39625	<i>Porzana</i>	<i>carolina</i>	p skel, wing	Alachua	1997	29 August	M
40079	<i>Porzana</i>	<i>carolina</i>	p skel, skin, wing	Alachua	1997	04 December	F
40135	<i>Porzana</i>	<i>carolina</i>	p skel, wing	Alachua	1998	04 March	F
40612	<i>Porzana</i>	<i>carolina</i>	skin	Alachua	1999	14 April	F
40966	<i>Porzana</i>	<i>carolina</i>	c skel	Broward	1998	13 October	U
40961	<i>Porzana</i>	<i>carolina</i>	c skel	Broward	1998	26 October	F
40960	<i>Porzana</i>	<i>carolina</i>	c skel	Broward	1998	05 September	U
41104	<i>Porzana</i>	<i>carolina</i>	skin	Broward	1999	07 November	M
41905	<i>Porzana</i>	<i>carolina</i>	c skel, wing	Broward	2000	29 March	F
40559	<i>Porzana</i>	<i>carolina</i>	c skel, wing	Glades	1999	21 February	M
41859	<i>Porzana</i>	<i>carolina</i>	skin	Lee	2000	28 September	M
40611	<i>Porzana</i>	<i>carolina</i>	skin	Levy	1999	09 March	F
39619	<i>Porphyryula</i>	<i>martinica</i>	skin	Alachua	1996	07 June	M
40305	<i>Porphyryula</i>	<i>martinica</i>	skin	Broward	1998	21 March	F
40324	<i>Porphyryula</i>	<i>martinica</i>	c skel	Broward	1998	11 April	F
40963	<i>Porphyryula</i>	<i>martinica</i>	c skel	Broward	1999	16 April	F
40816	<i>Porphyryula</i>	<i>martinica</i>	p skel, skin, wing	Broward	1999	29 March	M
40597	<i>Porphyryula</i>	<i>martinica</i>	p skel, skin	Broward	1999	26 March	F
41907	<i>Porphyryula</i>	<i>martinica</i>	skin	Broward	2000	17 February	M
41897	<i>Porphyryula</i>	<i>martinica</i>	skin	Palm Beach	2000	06 April	M
40766	<i>Porphyrio</i>	<i>porphyrio</i>	p skel, skin, wing	Broward	1999	31 May	F
40153	<i>Gallinula</i>	<i>chloropus</i>	skin	Alachua	1995	04 April	M
39363	<i>Gallinula</i>	<i>chloropus</i>	skin	Alachua	1997	April	F
39964	<i>Gallinula</i>	<i>chloropus</i>	p skel, skin, wing	Alachua	1998	14 January	M
40959	<i>Gallinula</i>	<i>chloropus</i>	c skel	Alachua	1999	30 March	F
41798	<i>Gallinula</i>	<i>chloropus</i>	c skel, wing	Alachua	2000	02 November	F
40318	<i>Gallinula</i>	<i>chloropus</i>	c skel	Broward	1998	03 July	M
40343	<i>Gallinula</i>	<i>chloropus</i>	c skel	Broward	1998	11 July	M
40965	<i>Gallinula</i>	<i>chloropus</i>	c skel	Broward	1998	28 September	M
40372	<i>Gallinula</i>	<i>chloropus</i>	c skel	Broward	1998	19 March	M
40610	<i>Gallinula</i>	<i>chloropus</i>	p skel	Broward	1999	26 March	M
40729	<i>Gallinula</i>	<i>chloropus</i>	p skel, wing	Broward	1999	10 June	F
40964	<i>Gallinula</i>	<i>chloropus</i>	c skel	Broward	1999	09 April	M
40968	<i>Gallinula</i>	<i>chloropus</i>	c skel	Broward	1999	06 April	F
40962	<i>Gallinula</i>	<i>chloropus</i>	c skel	Palm Beach	1999	24 March	M
39726	<i>Gallinula</i>	<i>chloropus</i>	p skel, skin, wing	St. Johns	1997	25 March	F
39913	<i>Fulica</i>	<i>americana</i>	p skel, wing	Alachua	1997	31 October	M
39912	<i>Fulica</i>	<i>americana</i>	p skel, wing	Alachua	1997	04 November	M
40953	<i>Fulica</i>	<i>americana</i>	c skel	Alachua	1999	22 October	M
41797	<i>Fulica</i>	<i>americana</i>	c skel, wing	Alachua	2000	03 November	M
39743	<i>Fulica</i>	<i>americana</i>	c skel	Clay	1995	23 October	M
41070	<i>Fulica</i>	<i>americana</i>	p skel, skin	Collier	1999	16 October	F

UF#	genus	species	form	county	year	date	sex
40338	<i>Fulica</i>	<i>americana</i>	c skel	Dade	1998	06 April	F
41085	<i>Fulica</i>	<i>americana</i>	skin	Levy	1999	06 November	F
41944	<i>Aramus</i>	<i>guarauna</i>	c skel	Broward	1999	02 April	F
41105	<i>Aramus</i>	<i>guarauna</i>	p skel, skin	Broward	1999	02 November	M
41137	<i>Grus</i>	<i>canadensis</i>	c skel	Hernando	2000	11 January	F
41945	<i>Grus</i>	<i>canadensis</i>	c skel, wing	Lee	1999	16 November	M
41138	<i>Grus</i>	<i>canadensis</i>	c skel	Lee	1999	19 November	U
40250	<i>Grus</i>	<i>americana</i>	p skel	Brevard	1997	21 January	F
40268	<i>Grus</i>	<i>americana</i>	p skel	Brevard	1997	19 November	M
40296	<i>Grus</i>	<i>americana</i>	p skel	Brevard	1997	17 September	F
40297	<i>Grus</i>	<i>americana</i>	p skel	Brevard	1997	17 July	F
40274	<i>Grus</i>	<i>americana</i>	p skel, skin	Brevard	1997	19 November	M
40260	<i>Grus</i>	<i>americana</i>	p skel	Lafayette	1997	16 March	F
40295	<i>Grus</i>	<i>americana</i>	p skel	Lake	1997	08 April	F
40251	<i>Grus</i>	<i>americana</i>	p skel	Lake	1997	24 March	M
40266	<i>Grus</i>	<i>americana</i>	c skel, wing	Lake	1997	28 March	M
40249	<i>Grus</i>	<i>americana</i>	p skel	Osceola	1993	13 December	M
39360	<i>Grus</i>	<i>americana</i>	p skel, wing	Osceola	1993	10 May	F
40272	<i>Grus</i>	<i>americana</i>	p skel	Osceola	1993	13 June	F
40271	<i>Grus</i>	<i>americana</i>	p skel	Osceola	1994	30 September	M
40255	<i>Grus</i>	<i>americana</i>	p skel	Osceola	1994	03 November	F
40262	<i>Grus</i>	<i>americana</i>	p skel	Osceola	1994	18 February	M
40248	<i>Grus</i>	<i>americana</i>	p skel	Osceola	1994	07 May	M
40263	<i>Grus</i>	<i>americana</i>	p skel	Osceola	1994	29 March	M
40273	<i>Grus</i>	<i>americana</i>	p skel	Osceola	1994	11 February	M
40264	<i>Grus</i>	<i>americana</i>	p skel	Osceola	1995	20 December	F
40265	<i>Grus</i>	<i>americana</i>	p skel	Osceola	1995	21 February	M
40281	<i>Grus</i>	<i>americana</i>	p skel	Osceola	1995	06 December	F
40275	<i>Grus</i>	<i>americana</i>	p skel	Osceola	1995	05 January	F
40257	<i>Grus</i>	<i>americana</i>	p skel	Osceola	1995	10 July	M
40291	<i>Grus</i>	<i>americana</i>	p skel	Osceola	1995	13 November	M
40290	<i>Grus</i>	<i>americana</i>	p skel	Osceola	1995	27 November	M
40278	<i>Grus</i>	<i>americana</i>	p skel	Osceola	1995	04 October	M
40285	<i>Grus</i>	<i>americana</i>	p skel	Osceola	1995	04 October	M
40256	<i>Grus</i>	<i>americana</i>	p skel	Osceola	1996	19 August	F
40288	<i>Grus</i>	<i>americana</i>	p skel	Osceola	1996	20 June	M
40284	<i>Grus</i>	<i>americana</i>	p skel	Osceola	1996	23 April	F
40270	<i>Grus</i>	<i>americana</i>	p skel	Osceola	1996	19 August	F
40252	<i>Grus</i>	<i>americana</i>	p skel	Osceola	1996	30 August	M
40287	<i>Grus</i>	<i>americana</i>	p skel	Osceola	1996	13 December	U
40258	<i>Grus</i>	<i>americana</i>	p skel	Osceola	1996	11 August	M
40289	<i>Grus</i>	<i>americana</i>	p skel	Osceola	1996	09 September	F
40253	<i>Grus</i>	<i>americana</i>	p skel	Osceola	1996	12 July	F
40254	<i>Grus</i>	<i>americana</i>	c skel	Osceola	1997	02 January	M

UF#	genus	species	form	county	year	date	sex
40293	<i>Grus</i>	<i>americana</i>	p skel, wing	Osceola	1998	06 March	M
40282	<i>Grus</i>	<i>americana</i>	c skel	Osceola	1998	06 December	F
40292	<i>Grus</i>	<i>americana</i>	p skel	Osceola	1998	05 March	F
40269	<i>Grus</i>	<i>americana</i>	p skel	Osceola	1998	07 April	M
40280	<i>Grus</i>	<i>americana</i>	p skel	Osceola	1998	02 April	M
40283	<i>Grus</i>	<i>americana</i>	p skel	Osceola	1998	11 May	M
40267	<i>Grus</i>	<i>americana</i>	p skel	Osceola	1998	04 April	F
40277	<i>Grus</i>	<i>americana</i>	p skel	Osceola	1998	01 April	F
40279	<i>Grus</i>	<i>americana</i>	p skel	Osceola	1998	05 April	M
40261	<i>Grus</i>	<i>americana</i>	p skel	Osceola	1998	06 April	M
40286	<i>Grus</i>	<i>americana</i>	p skel	Osceola	1998	31 March	M
40276	<i>Grus</i>	<i>americana</i>	c skel	Osceola	1998	11 May	M
40294	<i>Grus</i>	<i>americana</i>	p skel	Palm Beach	1997	06 March	F
40298	<i>Grus</i>	<i>americana</i>	p skel	St. Lucie	1997	11 September	M
40259	<i>Grus</i>	<i>americana</i>	p skel	Suwannee	1997	21 October	M
40681	<i>Pluvialis</i>	<i>squatarola</i>	p skel, wings	Alachua	1999	18 May	U
41909	<i>Pluvialis</i>	<i>squatarola</i>	skin, wing	Lee	2000	06 November	M
41119	<i>Charadrius</i>	<i>alexandrinus</i>	p skel, skin	Collier	1999	09 November	F
39977	<i>Charadrius</i>	<i>alexandrinus</i>	p skel, skin, wing	Escambia	1997	13 August	F
40582	<i>Charadrius</i>	<i>vociferus</i>	skin	Broward	1998	26 October	M
40323	<i>Charadrius</i>	<i>vociferus</i>	c skel	Broward	1998	27 June	F
40644	<i>Charadrius</i>	<i>vociferus</i>	skin	Broward	1999	*20 January	M
41900	<i>Charadrius</i>	<i>vociferus</i>	c skel, wing	Broward	2000	01 January	F
42083	<i>Catoptrophorus</i>	<i>semipalmatus</i>	p skel, skin, wing	Brevard	2001	17 April	F
41642	<i>Arenaria</i>	<i>interprex</i>	skin	Broward	2000	01 April	M
41845	<i>Calidris</i>	<i>alba</i>	skin	Brevard	2000	15 April	F
40459	<i>Calidris</i>	<i>alba</i>	c skel, wing	Broward	1998	20 March	F
40624	<i>Calidris</i>	<i>alba</i>	c skel, wing	Broward	1998	11 October	U
40648	<i>Calidris</i>	<i>alba</i>	c skel, wing	Broward	1999	26 January	M
41128	<i>Calidris</i>	<i>alba</i>	c skel, wing	Broward	1999	23 October	M
41899	<i>Calidris</i>	<i>alba</i>	c skel, wing	Broward	2000	24 February	M
41856	<i>Calidris</i>	<i>alba</i>	c skel	Lee	2000	27 December	F
40458	<i>Calidris</i>	<i>alba</i>	c skel	Palm Beach	1998	09 March	F
40375	<i>Calidris</i>	<i>alba</i>	c skel	Palm Beach	1998	received	M
40903	<i>Calidris</i>	<i>alba</i>	skin	Palm Beach	1999	16 December	F
42071	<i>Calidris</i>	<i>pusilla</i>	skin	Brevard	2001	29 May	F
42072	<i>Calidris</i>	<i>pusilla</i>	skin, wing	Brevard	2001	29 May	F
40868	<i>Calidris</i>	<i>mauri</i>	skin	Levy	1999	17 May	M
41637	<i>Calidris</i>	<i>melanotos</i>	p skel, skin, wing	Broward	2000	11 August	F
40450	<i>Calidris</i>	<i>maritima</i>	c skel, skin	Nassau	1998	16 December	F
41127	<i>Calidris</i>	<i>alpina</i>	c skel, wing	Escambia	1996	05 October	F
40483	<i>Calidris</i>	<i>alpina</i>	skin, wing	Levy	1998	23 November	F
41122	<i>Scolopax</i>	<i>minor</i>	skin, wing	Alachua	1999	26 November	M
42009	<i>Scolopax</i>	<i>minor</i>	skin	Brevard	2001	03 January	F

UF#	genus	species	form	county	year	date	sex
41111	<i>Gallinago</i>	<i>gallinago</i>	c skel, wing	Alachua	1999	08 February	M
40646	<i>Gallinago</i>	<i>gallinago</i>	p skel, skin, wing	Broward	1999	07 February	F
40995	<i>Phalaropus</i>	<i>lobatus</i>	p skel, skin	Brevard	1999	26 October	F
40753	<i>Stercorarius</i>	<i>pomarinus</i>	p skel, skin, wing	Broward	1999	13 May	F
40315	<i>Larus</i>	<i>atricilla</i>	c skel	Broward	1998	received	F
40876	<i>Larus</i>	<i>atricilla</i>	c skel, wing	Collier	1999	28 September	F
41129	<i>Larus</i>	<i>atricilla</i>	c skel	Collier	1999	28 November	M
41130	<i>Larus</i>	<i>atricilla</i>	c skel, wing	Collier	1999	19 November	F
41849	<i>Larus</i>	<i>atricilla</i>	c skel, wing	Lee	2000	21 December	M
41110	<i>Larus</i>	<i>philadelphia</i>	c skel, wing	Broward	1999	07 January	M
42035	<i>Larus</i>	<i>philadelphia</i>	c skel	Santa Rosa	2000	22 March	F
40045	<i>Larus</i>	<i>philadelphia</i>	p skel, skin, wing	Levy	1997	30 December	F
40550	<i>Larus</i>	<i>delawarensis</i>	p skel, skin, wing	Brevard	1999	31 January	M
40640	<i>Larus</i>	<i>delawarensis</i>	c skel, wing	Broward	1998	17 January	M
40351	<i>Larus</i>	<i>delawarensis</i>	c skel	Broward	1998	17 April	M
41005	<i>Larus</i>	<i>delawarensis</i>	skin	Broward	1999	05 January	M
41131	<i>Larus</i>	<i>delawarensis</i>	c skel, wing	Collier	1999	06 December	F
41800	<i>Larus</i>	<i>argentatus</i>	p skel, skin, wing	Collier	2000	11 March	F
41350	<i>Larus</i>	<i>argentatus</i>	c skel, wing	Collier	2000	14 January	M
40618	<i>Larus</i>	<i>fuscus</i>	p skel, skin, wing	Broward	1999	17 January	F
40385	<i>Larus</i>	<i>marinus</i>	p skel, skin, wing	Broward	1998	21 March	M
40354	<i>Rissa</i>	<i>tridactyla</i>	p skel, skin, wing	Flagler	1998	received	M
40602	<i>Sterna</i>	<i>maxima</i>	c skel, wing	Broward	1998	28 December	F
40609	<i>Sterna</i>	<i>maxima</i>	c skel	Broward	1999	*6 January	F
41112	<i>Sterna</i>	<i>maxima</i>	c skel	Broward	1999	06 January	F
41141	<i>Sterna</i>	<i>maxima</i>	skin	Lee	1999	29 December	F
40144	<i>Sterna</i>	<i>maxima</i>	skin	Levy	1998	10 March	M
40981	<i>Sterna</i>	<i>sandvicensis</i>	p skel, skin	Broward	1999	02 September	F
40982	<i>Sterna</i>	<i>sandvicensis</i>	p skel, skin	Broward	1999	02 September	F
40980	<i>Sterna</i>	<i>sandvicensis</i>	p skel, skin	Collier	1999	21 September	F
41117	<i>Sterna</i>	<i>sandvicensis</i>	skin, wing	Collier	1999	19 November	F
41793	<i>Sterna</i>	<i>sandvicensis</i>	c skel, wing	Collier	2000	12 March	M
40643	<i>Sterna</i>	<i>sandvicensis</i>	c skel	Palm Beach	1998	28 August	M
40983	<i>Sterna</i>	<i>dougallii</i>	p skel, skin, wing	Broward	1999	17 October	M
41118	<i>Sterna</i>	<i>hirundo</i>	skin	Collier	1999	02 November	F
41120	<i>Sterna</i>	<i>hirundo</i>	c skel, wing	Lee	1999	28 November	F
41143	<i>Sterna</i>	<i>antillarum</i>	skin	Broward*	1999	22 May	U
40638	<i>Sterna</i>	<i>antillarum</i>	p skel, skin, wing	Broward	1998	30 July	M
41911	<i>Sterna</i>	<i>antillarum</i>	skin	Monroe	2000	05 May	U
41910	<i>Sterna</i>	<i>antillarum</i>	skin	Monroe	2000	05 May	M
40303	<i>Sterna</i>	<i>anaethetus</i>	p skel, skin, wing	Broward	1998	17 May	M
40675	<i>Sterna</i>	<i>anaethetus</i>	skin, wing	Broward	1999	11 January	F
41612	<i>Sterna</i>	<i>anaethetus</i>	skin	Broward	1999	07 January	M
41611	<i>Sterna</i>	<i>anaethetus</i>	c skel, wing	Palm Beach	1999	06 January	F

UF#	genus	species	form	county	year	date	sex
40654	<i>Sterna</i>	<i>fuscata</i>	c skel, wing	Broward	1998	29 July	M
40352	<i>Sterna</i>	<i>fuscata</i>	c skel	Broward	1998	28 March	M
41114	<i>Sterna</i>	<i>fuscata</i>	c skel, wing	Broward	1999	03 June	M
40977	<i>Sterna</i>	<i>fuscata</i>	p skel, skin	Broward	1999	16 October	M
40978	<i>Sterna</i>	<i>fuscata</i>	p skel, skin	Broward	1999	16 October	F
41895	<i>Sterna</i>	<i>fuscata</i>	c skel, wing	Broward	2000	20 May	F
41853	<i>Sterna</i>	<i>fuscata</i>	skin	Lee	2000	18 September	M
41854	<i>Sterna</i>	<i>fuscata</i>	skin	Lee	2000	19 September	M
40976	<i>Sterna</i>	<i>fuscata</i>	p skel, skin	Palm Beach	1999	18 September	F
40661	<i>Anous</i>	<i>stolidus</i>	p skel, skin, wing	Broward	1998	26 September	F
41841	<i>Anous</i>	<i>stolidus</i>	skin, wing	Broward	2000	21 May	M
40163	<i>Rynchops</i>	<i>niger</i>	skin	Broward	1998	11 July	M
40373	<i>Rynchops</i>	<i>niger</i>	c skel	Broward	1998	11 April	F
40867	<i>Rynchops</i>	<i>niger</i>	skin	Broward	1998	21 July	F
41896	<i>Rynchops</i>	<i>niger</i>	c skel, wing	Broward	2000	11 January	M
41908	<i>Rynchops</i>	<i>niger</i>	c skel, wing	Broward	2000	05 January	M
40341	<i>Rynchops</i>	<i>niger</i>	c skel	Dade	1998	30 May	M
39297	<i>Brachyramphus</i>	<i>perdix</i>	p skel, skin	Pinellas	1994	28 November	M
40747	<i>Columba</i>	<i>livia</i>	c skel, wing	Palm Beach	1999	08 January	M
40335	<i>Columba</i>	<i>leucocephala</i>	c skel, wing	Broward	1998	08 June	F
42004	<i>Columba</i>	<i>leucocephala</i>	c skel, wing	Monroe	2000	07 April	M
40909	<i>Streptopelia</i>	<i>decaocto</i>	c skel	Broward*	1998	received	M
40911	<i>Streptopelia</i>	<i>decaocto</i>	c skel	Broward*	1998	27 February	F
40733	<i>Streptopelia</i>	<i>decaocto</i>	c skel	Broward*	1999	16 June	M
40732	<i>Streptopelia</i>	<i>decaocto</i>	c skel	Broward	1999	27 May	M
40910	<i>Streptopelia</i>	<i>decaocto</i>	c skel	Broward*	1999	received	F
40709	<i>Streptopelia</i>	<i>decaocto</i>	c skel	Broward	1995	14 October	F
40359	<i>Streptopelia</i>	<i>decaocto</i>	c skel, wing	Broward	1998	05 August	F
40614	<i>Streptopelia</i>	<i>decaocto</i>	c skel	Broward	1998	13 September	M
40914	<i>Streptopelia</i>	<i>decaocto</i>	c skel	Broward	1998	12 October	F
40912	<i>Streptopelia</i>	<i>decaocto</i>	c skel	Broward	1998	31 December	F
40844	<i>Streptopelia</i>	<i>decaocto</i>	c skel	Broward	1998	08 July	M
40716	<i>Streptopelia</i>	<i>decaocto</i>	c skel	Broward	1998	31 December	F
40246	<i>Streptopelia</i>	<i>decaocto</i>	c skel, wing	Broward	1998	10 March	M
40358	<i>Streptopelia</i>	<i>decaocto</i>	c skel	Broward	1998	05 August	F
40934	<i>Streptopelia</i>	<i>decaocto</i>	c skel	Broward	1998	05 January	U
40929	<i>Streptopelia</i>	<i>decaocto</i>	c skel	Broward	1998	21 October	M
40468	<i>Streptopelia</i>	<i>decaocto</i>	c skel, wing	Broward	1998	02 July	M
40720	<i>Streptopelia</i>	<i>decaocto</i>	c skel	Broward	1998	13 September	M
40932	<i>Streptopelia</i>	<i>decaocto</i>	c skel	Broward	1998	09 April	M
40360	<i>Streptopelia</i>	<i>decaocto</i>	c skel, wing	Broward	1998	24 July	F
40717	<i>Streptopelia</i>	<i>decaocto</i>	c skel	Broward	1998	26 September	M
40938	<i>Streptopelia</i>	<i>decaocto</i>	c skel	Broward	1999	20 May	M
40937	<i>Streptopelia</i>	<i>decaocto</i>	c skel	Broward	1999	21 May	M

UF#	genus	species	form	county	year	date	sex
40665	<i>Streptopelia</i>	<i>decaocto</i>	c skel	Broward	1999	09 April	M
40936	<i>Streptopelia</i>	<i>decaocto</i>	c skel	Broward	1999	09 April	F
40719	<i>Streptopelia</i>	<i>decaocto</i>	c skel	Broward	1999	15 February	F
41056	<i>Streptopelia</i>	<i>decaocto</i>	c skel	Broward	1999	21 May	F
40913	<i>Streptopelia</i>	<i>decaocto</i>	c skel	Broward	1999	06 January	F
41057	<i>Streptopelia</i>	<i>decaocto</i>	c skel	Broward	1999	05 April	F
40704	<i>Streptopelia</i>	<i>decaocto</i>	c skel	Broward	1999	05 April	M
40843	<i>Streptopelia</i>	<i>decaocto</i>	c skel	Broward	1999	23 January	M
40933	<i>Streptopelia</i>	<i>decaocto</i>	c skel	Broward	1999	04 January	F
40694	<i>Streptopelia</i>	<i>decaocto</i>	c skel	Broward	1999	19 April	M
40613	<i>Streptopelia</i>	<i>decaocto</i>	skin	Dade	1999	17 February	M
40467	<i>Streptopelia</i>	<i>decaocto</i>	c skel	Levy	1998	12 September	M
40931	<i>Streptopelia</i>	<i>decaocto</i>	c skel	Levy	1998	29 July	F
40916	<i>Streptopelia</i>	<i>decaocto</i>	c skel	Levy	1998	18 November	M
40915	<i>Streptopelia</i>	<i>decaocto</i>	c skel	Levy	1999	26 May	M
40362	<i>Streptopelia</i>	<i>decaocto</i>	c skel	Palm Beach	1998	29 May	M
40363	<i>Streptopelia</i>	<i>decaocto</i>	c skel	Palm Beach	1998	received	M
40906	<i>Streptopelia</i>	<i>decaocto</i>	c skel	Palm Beach	1998	16 August	F
40905	<i>Streptopelia</i>	<i>decaocto</i>	c skel	Palm Beach	1998	16 August	M
40847	<i>Streptopelia</i>	<i>decaocto</i>	c skel	Palm Beach	1998	06 September	M
40928	<i>Streptopelia</i>	<i>decaocto</i>	c skel	Palm Beach	1998	28 December	M
40361	<i>Streptopelia</i>	<i>decaocto</i>	p skel, skin	Palm Beach	1998	13 April	M
40908	<i>Streptopelia</i>	<i>decaocto</i>	c skel	Palm Beach	1998	01 April	M
40356	<i>Streptopelia</i>	<i>decaocto</i>	c skel, wing	Palm Beach	1998	23 May	M
40846	<i>Streptopelia</i>	<i>decaocto</i>	c skel	Palm Beach	1998	12 September	M
40907	<i>Streptopelia</i>	<i>decaocto</i>	c skel	Palm Beach	1998	06 April	M
40845	<i>Streptopelia</i>	<i>decaocto</i>	c skel	Palm Beach	1998	27 November	M
40365	<i>Streptopelia</i>	<i>decaocto</i>	skin	Palm Beach	1998	01 June	M
40718	<i>Streptopelia</i>	<i>decaocto</i>	c skel	Palm Beach	1998	07 September	F
40357	<i>Streptopelia</i>	<i>decaocto</i>	c skel	Palm Beach	1998	29 July	F
40935	<i>Streptopelia</i>	<i>decaocto</i>	c skel	Palm Beach	1999	03 February	U
40706	<i>Streptopelia</i>	<i>decaocto</i>	c skel	Palm Beach	1999	21 March	M
40499	<i>Streptopelia</i>	<i>decaocto</i>	c skel	Pinellas	1998	29 October	M
41133	<i>Streptopelia</i>	<i>decaocto</i>	c skel	Santa Rosa	1999	29 March	F
40660	<i>Zenaida</i>	<i>asiatica</i>	p skel, skin, wing	Broward*	1999	received	F
41613	<i>Zenaida</i>	<i>asiatica</i>	c skel, wing	Broward*	1999	received	F
40641	<i>Zenaida</i>	<i>asiatica</i>	c skel, wing	Palm Beach	1998	02 April	M
39859	<i>Zenaida</i>	<i>macroura</i>	c skel, skin	Alachua	1997	24 November	F
39620	<i>Zenaida</i>	<i>macroura</i>	skin	Alachua	1997	20 February	M
40940	<i>Zenaida</i>	<i>macroura</i>	c skel	Alachua	1999	23 May	F
40939	<i>Zenaida</i>	<i>macroura</i>	c skel	Broward	1998	31 March	F
40655	<i>Zenaida</i>	<i>macroura</i>	c skel, wing	Broward	1998	17 September	M
40710	<i>Zenaida</i>	<i>macroura</i>	c skel	Broward	1999	received	M
41132	<i>Zenaida</i>	<i>macroura</i>	c skel, wing	Collier	1999	01 December	M

UF#	genus	species	form	county	year	date	sex
40724	<i>Zenaida</i>	<i>macroura</i>	c skel, wing	Palm Beach	1998	14 August	M
40725	<i>Zenaida</i>	<i>macroura</i>	c skel	Palm Beach	1998	15 July	M
42144	<i>Columbina</i>	<i>passerina</i>	c skel	Broward	2000	10 June	M
42145	<i>Columbina</i>	<i>passerina</i>	c skel, wing	Broward	2000	11 February	M
40239	<i>Myiopsitta</i>	<i>monachus</i>	skin	Broward	1998	29 July	M
40659	<i>Myiopsitta</i>	<i>monachus</i>	skin	Broward	1998	28 December	F
40244	<i>Myiopsitta</i>	<i>monachus</i>	c skel, wing	Dade	1998	28 July	F
40241	<i>Myiopsitta</i>	<i>monachus</i>	c skel	Dade	1998	28 July	M
40243	<i>Myiopsitta</i>	<i>monachus</i>	p skel, skin	Dade	1998	28 July	U
40238	<i>Myiopsitta</i>	<i>monachus</i>	c skel	Pinellas	1998	08 April	U
40242	<i>Myiopsitta</i>	<i>monachus</i>	c skel	Pinellas	1998	08 April	U
40240	<i>Myiopsitta</i>	<i>monachus</i>	c skel	Pinellas	1998	08 April	U
40236	<i>Myiopsitta</i>	<i>monachus</i>	c skel	Pinellas	1998	08 April	F
40237	<i>Myiopsitta</i>	<i>monachus</i>	c skel, wing	Pinellas	1998	08 April	M
40667	<i>Coccyzus</i>	<i>americanus</i>	skin	Broward*	1998	08 November	M
40097	<i>Coccyzus</i>	<i>americanus</i>	c skel	Alachua	1998	April	F
41392	<i>Coccyzus</i>	<i>americanus</i>	skin	Brevard	1999	October	M
41627	<i>Coccyzus</i>	<i>americanus</i>	skin	Brevard	2000	25 April	F
41050	<i>Coccyzus</i>	<i>americanus</i>	skin	Broward	1998	11 October	M
41416	<i>Coccyzus</i>	<i>americanus</i>	skin	Broward	1998	28 September	M
40447	<i>Coccyzus</i>	<i>americanus</i>	c skel	Broward	1998	07 October	M
40900	<i>Coccyzus</i>	<i>americanus</i>	skin	Broward	1999	25 May	F
40319	<i>Coccyzus</i>	<i>americanus</i>	c skel	Levy	1994	20 October	F
40760	<i>Coccyzus</i>	<i>americanus</i>	c skel	Levy	1999	11 May	F
41051	<i>Coccyzus</i>	<i>americanus</i>	c skel	Palm Beach	1998	18 October	M
40346	<i>Coccyzus</i>	<i>americanus</i>	c skel	Palm Beach	1998	24 April	F
42047	<i>Tyto</i>	<i>alba</i>	skin, p. skel, wing	Alachua	2001	29 March	F
40146	<i>Tyto</i>	<i>alba</i>	c skel, wing	Broward*	1998	received	F
41010	<i>Tyto</i>	<i>alba</i>	skin	Broward	1998	12 August	F
41894	<i>Tyto</i>	<i>alba</i>	c skel, wing	Broward	2000	06 January	F
40620	<i>Tyto</i>	<i>alba</i>	c skel	Collier	1997	18 December	M
40145	<i>Otus</i>	<i>asio</i>	c skel, wing	Alachua	1992	29 January	F
40891	<i>Otus</i>	<i>asio</i>	skin	Alachua	1999	21 September	M
40376	<i>Otus</i>	<i>asio</i>	c skel	Broward	1998	12 July	F
40479	<i>Otus</i>	<i>asio</i>	skin	Broward	1998	07 September	F
40605	<i>Otus</i>	<i>asio</i>	skin	Broward	1999	20 January	F
41036	<i>Otus</i>	<i>asio</i>	skin	Broward	1998	23 July	F
40902	<i>Otus</i>	<i>asio</i>	skin	Broward	1999	20 May	M
39994	<i>Otus</i>	<i>asio</i>	p skel, skin, wing	Citrus	1997	08 November	F
41062	<i>Otus</i>	<i>asio</i>	skin	Citrus	1999	17 November	M
40871	<i>Otus</i>	<i>asio</i>	skin	Palm Beach	1998	08 December	M
40878	<i>Otus</i>	<i>asio</i>	skin	Palm Beach	1998	21 September	M
40898	<i>Otus</i>	<i>asio</i>	skin	Palm Beach	1998	24 December	F
40328	<i>Bubo</i>	<i>virginianus</i>	c skel, wing	Alachua	1998	27 January	M

UF#	genus	species	form	county	year	date	sex
41631	<i>Bubo</i>	<i>virginianus</i>	c skel	Alachua	1999	24 November	M
40485	<i>Bubo</i>	<i>virginianus</i>	c skel	Broward	1998	04 May	U
40631	<i>Bubo</i>	<i>virginianus</i>	c skel	Broward	1998	01 November	M
40842	<i>Bubo</i>	<i>virginianus</i>	c skel	Broward	1998	01 November	F
40484	<i>Bubo</i>	<i>virginianus</i>	c skel	Flagler	1998	05 December	U
40991	<i>Bubo</i>	<i>virginianus</i>	c skel, wing	Flagler	1998	05 December	F
41278	<i>Bubo</i>	<i>virginianus</i>	c skel	Suwannee	1996	06 February	F
40649	<i>Athene</i>	<i>cunicularia</i>	c skel, wing	Broward	1998	17 August	M
40585	<i>Athene</i>	<i>cunicularia</i>	skin	Broward	1998	06 November	M
40588	<i>Athene</i>	<i>cunicularia</i>	p skel, skin	Broward	1998	*28 September	F
40549	<i>Athene</i>	<i>cunicularia</i>	skin	Broward	1998	11 July	F
41052	<i>Athene</i>	<i>cunicularia</i>	c skel, wing	Broward	1999	21 May	M
40837	<i>Athene</i>	<i>cunicularia</i>	skin	Palm Beach	1998	28 August	M
40873	<i>Athene</i>	<i>cunicularia</i>	skin	Palm Beach	1999	15 June	M
41948	<i>Strix</i>	<i>varia</i>	c skel, wing	Alachua	2000	24 January	F
40096	<i>Strix</i>	<i>varia</i>	c skel	Alachua	1996		F
41279	<i>Strix</i>	<i>varia</i>	c skel, wing	Alachua	1998	03 June	M
41009	<i>Strix</i>	<i>varia</i>	skin	Alachua	1998	27 October	F
40739	<i>Strix</i>	<i>varia</i>	c skel	Alachua	1999	07 August	M
41831	<i>Strix</i>	<i>varia</i>	skin	Alachua	2000	13 December	F
40310	<i>Strix</i>	<i>varia</i>	c skel	Collier	1996	28 October	M
40999	<i>Strix</i>	<i>varia</i>	p skel	Gadsden	1999	11 April	F
41995	<i>Asio</i>	<i>flammeus</i>	c skel, skin, wing	Broward	2001	16 March	F
39661	<i>Chordeiles</i>	<i>acutipennis</i>	c skel, wing	Monroe	1981	07 January	M
40464	<i>Chordeiles</i>	<i>acutipennis</i>	p skel, skin, wing	Alachua	1999	11 January	M
40637	<i>Chordeiles</i>	<i>minor</i>	c skel, wing	Broward	1998	28 August	M
40746	<i>Chordeiles</i>	<i>minor</i>	c skel, wing	Broward	1999	06 May	F
40128	<i>Chordeiles</i>	<i>minor</i>	p skel, wing	Collier	1996	01 August	F
40889	<i>Chordeiles</i>	<i>minor</i>	c skel, wing	Collier	1999	26 September	F
41850	<i>Chordeiles</i>	<i>minor</i>	c skel, wing	Lee	2000	22 September	F
40666	<i>Caprimulgus</i>	<i>carolinensis</i>	c skel	Alachua	1999	20 May	F
41997	<i>Caprimulgus</i>	<i>carolinensis</i>	c skel	Broward	2001	12 March	M
41996	<i>Caprimulgus</i>	<i>carolinensis</i>	c skel	Broward	2001	27 March	F
41055	<i>Caprimulgus</i>	<i>carolinensis</i>	skin	Broward	1998	10 August	M
40454	<i>Caprimulgus</i>	<i>carolinensis</i>	c skel, wing	Broward	1998	25 August	F
40445	<i>Caprimulgus</i>	<i>carolinensis</i>	c skel	Broward	1998	04 October	M
40317	<i>Caprimulgus</i>	<i>carolinensis</i>	c skel	Broward	1998	14 April	F
40615	<i>Caprimulgus</i>	<i>carolinensis</i>	c skel	Broward	1998	14 October	F
40744	<i>Caprimulgus</i>	<i>carolinensis</i>	c skel	Broward	1999	10 March	M
40460	<i>Caprimulgus</i>	<i>carolinensis</i>	c skel, wing	Dade	1998	06 March	M
40133	<i>Caprimulgus</i>	<i>carolinensis</i>	wing	Gilchrist	1998	06 June	F
41402	<i>Caprimulgus</i>	<i>carolinensis</i>	skin	Levy	2000	16 April	M
40745	<i>Caprimulgus</i>	<i>carolinensis</i>	c skel	Palm Beach	1998	*02 November	F
41103	<i>Caprimulgus</i>	<i>vociferus</i>	c skel	Broward	2001	21 February	M

UF#	genus	species	form	county	year	date	sex
41103	<i>Caprimulgus</i>	<i>vociferus</i>	skin	Broward	1999	04 November	M
41172	<i>Caprimulgus</i>	<i>vociferus</i>	skin	Lee	1999	17 October	M
40633	<i>Caprimulgus</i>	<i>vociferus</i>	p skel, skin, wing	Palm Beach	1998	15 December	M
38059	<i>Streptoprocne</i>	<i>zonaris</i>	p skel, skin	Broward	1994	15 September	F
38060	<i>Chaetura</i>	<i>pelagica</i>	p skel, skin	Alachua	1993	01 December	M
42049	<i>Chaetura</i>	<i>pelagica</i>	skin	Brevard	2001	14 May	M
42039	<i>Archilochus</i>	<i>colubris</i>	c skel	Alachua	1998		M
42033	<i>Archilochus</i>	<i>colubris</i>	skin	Alachua	2001	20 April	F
40378	<i>Archilochus</i>	<i>colubris</i>	c skel	Alachua	1997	11 July	M
41409	<i>Archilochus</i>	<i>colubris</i>	skin	Alachua	1999	23 September	F
40635	<i>Archilochus</i>	<i>colubris</i>	c skel, wing	Gilchrist	1998	23 March	M
40634	<i>Archilochus</i>	<i>colubris</i>	skin	Gilchrist	1999	04 April	M
42002	<i>Archilochus</i>	<i>colubris</i>	skin	Liberty	2001	06 April	F
38823	<i>Selasphorus</i>	<i>rufus</i>	feathers	Alachua	1995	14 December	F
41406	<i>Ceryle</i>	<i>alcyon</i>	c skel, wing	Alachua	1999	20 September	F
40972	<i>Ceryle</i>	<i>alcyon</i>	p skel, skin	Alachua	1999	27 October	F
40974	<i>Ceryle</i>	<i>alcyon</i>	p skel, skin	Alachua	1999	09 October	M
40457	<i>Ceryle</i>	<i>alcyon</i>	skin	Broward	1998	22 October	U
40617	<i>Ceryle</i>	<i>alcyon</i>	c skel	Broward	1998	13 October	F
40452	<i>Ceryle</i>	<i>alcyon</i>	c skel, wing	Broward	1998	06 September	F
41038	<i>Ceryle</i>	<i>alcyon</i>	skin	Broward	1999	12 August	F
40748	<i>Ceryle</i>	<i>alcyon</i>	c skel, wing	Broward	1999	03 April	M
40603	<i>Ceryle</i>	<i>alcyon</i>	skin	Broward	1999	11 March	M
41033	<i>Ceryle</i>	<i>alcyon</i>	skin	Broward	1999	19 September	M
40897	<i>Ceryle</i>	<i>alcyon</i>	skin	Collier	1999	25 September	F
41039	<i>Ceryle</i>	<i>alcyon</i>	skin	Dade	1999	10 August	F
40973	<i>Ceryle</i>	<i>alcyon</i>	p skel, skin	Lee	1999	16 October	M
40975	<i>Ceryle</i>	<i>alcyon</i>	p skel, skin	Lee	1999	22 October	M
41032	<i>Ceryle</i>	<i>alcyon</i>	skin	Palm Beach	1998	11 October	M
42032	<i>Melanerpes</i>	<i>erythrocephalus</i>	c skel	Alachua	2001	22 April	F
41799	<i>Melanerpes</i>	<i>erythrocephalus</i>	skin	Alachua	2000	11 November	M
41123	<i>Melanerpes</i>	<i>erythrocephalus</i>	skin	Alachua	2000	11 January	M
42007	<i>Melanerpes</i>	<i>erythrocephalus</i>	c skel	Levy	1997	July	F
40161	<i>Melanerpes</i>	<i>carolinus</i>	skin	Alachua	1997	15 September	M
39990	<i>Melanerpes</i>	<i>carolinus</i>	skin	Alachua	1998	17 February	U
40507	<i>Melanerpes</i>	<i>carolinus</i>	skin	Alachua	1999	25 February	M
40901	<i>Melanerpes</i>	<i>carolinus</i>	skin	Broward	1999	10 April	M
41037	<i>Melanerpes</i>	<i>carolinus</i>	skin	Broward	1999	12 August	F
40604	<i>Melanerpes</i>	<i>carolinus</i>	c skel, wing	Broward	1999	05 January	F
41031	<i>Melanerpes</i>	<i>carolinus</i>	skin	Broward	1999	22 May	M
40818	<i>Melanerpes</i>	<i>carolinus</i>	skin	Broward	1999	15 March	F
41035	<i>Melanerpes</i>	<i>carolinus</i>	skin	Collier	1998	23 October	M
41396	<i>Melanerpes</i>	<i>carolinus</i>	c skel, wing	Lee	2000	19 February	M
41805	<i>Melanerpes</i>	<i>carolinus</i>	skin, wing	Leon	2000	29 November	M

UF#	genus	species	form	county	year	date	sex
41804	<i>Melanerpes</i>	<i>carolinus</i>	skin	Leon	2000	29 November	M
39810	<i>Melanerpes</i>	<i>carolinus</i>	c skel	Levy	1996	06 December	M
41084	<i>Melanerpes</i>	<i>carolinus</i>	skin	Levy	1999	30 November	F
40778	<i>Melanerpes</i>	<i>carolinus</i>	skin	Levy	1999	08 September	M
41261	<i>Melanerpes</i>	<i>carolinus</i>	skin	Levy	2000	12 April	M
41296	<i>Melanerpes</i>	<i>carolinus</i>	skin	Levy	2000	10 May	M
39662	<i>Sphyrapicus</i>	<i>varius</i>	skin	Alachua	1997	29 January	M
40475	<i>Sphyrapicus</i>	<i>varius</i>	skin	Alachua	1998	29 November	M
40474	<i>Sphyrapicus</i>	<i>varius</i>	skin	Alachua	1999	04 January	M
40969	<i>Sphyrapicus</i>	<i>varius</i>	skin	Alachua	1999	SPRING	F
41796	<i>Sphyrapicus</i>	<i>varius</i>	c skel, wing	Alachua	2000	25 October	F
41795	<i>Sphyrapicus</i>	<i>varius</i>	skin	Brevard	1999	29 November	F
40607	<i>Sphyrapicus</i>	<i>varius</i>	skin	Broward	1998	28 December	F
41082	<i>Sphyrapicus</i>	<i>varius</i>	skin	Broward	1999	14 November	F
40726	<i>Sphyrapicus</i>	<i>varius</i>	skin	Broward	1999	*03 April	M
41059	<i>Sphyrapicus</i>	<i>varius</i>	skin	Clay	1999	11 February	M
41043	<i>Sphyrapicus</i>	<i>varius</i>	skin	Levy	1999	01 December	M
41042	<i>Sphyrapicus</i>	<i>varius</i>	skin	Levy	1999	01 December	F
40473	<i>Sphyrapicus</i>	<i>varius</i>	skin	Palm Beach	1998	11 November	F
40438	<i>Sphyrapicus</i>	<i>varius</i>	skin	Sumter	1997	01 December	M
41397	<i>Picoides</i>	<i>pubescens</i>	skin	Collier	2000	04 February	M
40770	<i>Picoides</i>	<i>pubescens</i>	skin	Levy	1999	08 September	F
40854	<i>Picoides</i>	<i>pubescens</i>	skin	Volusia	1999	20 June	F
41152	<i>Picoides</i>	<i>borealis</i>	c skel	Clay	1997	19 June	F
41151	<i>Picoides</i>	<i>borealis</i>	p skel, wing	Clay	1997	19 June	F
41150	<i>Picoides</i>	<i>borealis</i>	p skel, skin	Levy	1997	01 May	M
39727	<i>Colaptes</i>	<i>auratus</i>	p skel, skin	Alachua	1997	30 May	M
40162	<i>Colaptes</i>	<i>auratus</i>	c skel	Alachua	1998	19 February	M
40858	<i>Colaptes</i>	<i>auratus</i>	skin	Alachua	1999	24 May	F
41832	<i>Colaptes</i>	<i>auratus</i>	skin	Brevard	2000	01 July	F
41034	<i>Colaptes</i>	<i>auratus</i>	skin	Broward	1998	30 September	F
40636	<i>Colaptes</i>	<i>auratus</i>	skin	Palm Beach	1998	*11 September	M
41286	<i>Dryocopus</i>	<i>pileatus</i>	skin	Alachua	2000	02 May	F
40129	<i>Dryocopus</i>	<i>pileatus</i>	c skel	Collier	1997	19 May	F
40657	<i>Contopus</i>	<i>virens</i>	skin	Broward	1998	23 October	M
39814	<i>Contopus</i>	<i>virens</i>	skin	Levy	1996	13 September	M
41662	<i>Contopus</i>	<i>virens</i>	skin	Levy	2000	22 September	M
40985	<i>Empidonax</i>	<i>virescens</i>	skin	Broward	1999	19 October	M
40435	<i>Sayornis</i>	<i>phoebe</i>	skin	Collier	1996	20 October	M
40417	<i>Sayornis</i>	<i>phoebe</i>	skin	Levy	1998	06 November	F
40421	<i>Sayornis</i>	<i>phoebe</i>	skin	Levy	1998	30 November	F
40942	<i>Sayornis</i>	<i>phoebe</i>	skin	Levy	1999	28 October	F
41811	<i>Sayornis</i>	<i>phoebe</i>	skin	Levy	2000	08 December	F
42031	<i>Myiarchus</i>	<i>crinitus</i>	c skel	Alachua	2001	30 April	M

UF#	genus	species	form	county	year	date	sex
42012	<i>Myiarchus</i>	<i>crinitus</i>	skin	Alachua	2001	21 April	M
41419	<i>Myiarchus</i>	<i>crinitus</i>	skin	Brevard	2000	16 April	F
41155	<i>Myiarchus</i>	<i>crinitus</i>	skin	Broward	1998	26 September	F
42019	<i>Myiarchus</i>	<i>crinitus</i>	skin	Levy	2001	30 April	M
42020	<i>Myiarchus</i>	<i>crinitus</i>	skin	Levy	2001	30 April	M
39046	<i>Tyrannus</i>	<i>tyrannus</i>	skin	Alachua	1996	03 May	M
40381	<i>Tyrannus</i>	<i>dominicensis</i>	c skel	Broward	1998	*30 May	F
40622	<i>Tyrannus</i>	<i>dominicensis</i>	c skel, wing	Broward	1998	10 July	F
40552	<i>Tyrannus</i>	<i>dominicensis</i>	skin	Broward	1998	14 August	M
41064	<i>Tyrannus</i>	<i>dominicensis</i>	skin	Broward	1999	15 September	M
39292	<i>Lanius</i>	<i>ludovicianus</i>	c skel	Alachua	1992	received	U
40127	<i>Lanius</i>	<i>ludovicianus</i>	skin	Alachua	1998	09 May	M
40874	<i>Lanius</i>	<i>ludovicianus</i>	skin	Broward	1998	13 March	M
41020	<i>Lanius</i>	<i>ludovicianus</i>	skin	Broward	1999	30 April	M
40749	<i>Lanius</i>	<i>ludovicianus</i>	c skel	Broward	1999	24 May	M
40608	<i>Lanius</i>	<i>ludovicianus</i>	c skel, wing	Broward	1999	07 February	M
39663	<i>Lanius</i>	<i>ludovicianus</i>	skin	Duval	1997	13 January	F
41024	<i>Lanius</i>	<i>ludovicianus</i>	skin	Palm Beach	1998	16 May	F
40830	<i>Lanius</i>	<i>ludovicianus</i>	skin	Palm Beach	1999	received	F
40433	<i>Vireo</i>	<i>griseus</i>	c skel	Collier	1997	28 April	M
39685	<i>Vireo</i>	<i>griseus</i>	skin	Levy	1996	13 September	F
39740	<i>Vireo</i>	<i>griseus</i>	c skel	Levy	1996	13 September	F
39728	<i>Vireo</i>	<i>griseus</i>	c skel	Levy	1996	06 September	M
40775	<i>Vireo</i>	<i>griseus</i>	skin	Levy	1999	08 September	M
40780	<i>Vireo</i>	<i>griseus</i>	skin	Levy	1999	08 September	M
40779	<i>Vireo</i>	<i>griseus</i>	skin	Levy	1999	08 September	M
40781	<i>Vireo</i>	<i>griseus</i>	skin	Levy	1999	08 September	F
40812	<i>Vireo</i>	<i>griseus</i>	skin	Levy	1999	15 September	M
41633	<i>Vireo</i>	<i>griseus</i>	skin	Levy	2000	13 September	F
41271	<i>Vireo</i>	<i>griseus</i>	skin	Levy	2000	19 April	M
41270	<i>Vireo</i>	<i>griseus</i>	skin	Levy	2000	19 April	F
41663	<i>Vireo</i>	<i>griseus</i>	skin	Levy	2000	22 September	F
41158	<i>Vireo</i>	<i>griseus</i>	skin	Levy	2000	25 February	M
41167	<i>Vireo</i>	<i>griseus</i>	skin	Levy	2000	07 March	F
41921	<i>Vireo</i>	<i>griseus</i>	skin	Levy	2001	27 February	F
41973	<i>Vireo</i>	<i>griseus</i>	skin	Levy	2001	27 March	M
41974	<i>Vireo</i>	<i>griseus</i>	skin	Levy	2001	27 March	M
41979	<i>Vireo</i>	<i>griseus</i>	skin	Levy	2001	27 March	M
41983	<i>Vireo</i>	<i>griseus</i>	skin	Levy	2001	27 March	M
42062	<i>Vireo</i>	<i>griseus</i>	skin	Levy	2001	25 May	M
40774	<i>Vireo</i>	<i>flavifrons</i>	skin	Levy	1999	08 September	M
41985	<i>Vireo</i>	<i>flavifrons</i>	skin	Levy	2001	27 March	M
40488	<i>Vireo</i>	<i>solitarius</i>	skin	Levy	1999	08 January	M
40496	<i>Vireo</i>	<i>solitarius</i>	skin	Levy	1999	07 January	M

UF#	genus	species	form	county	year	date	sex
41818	<i>Vireo</i>	<i>solitarius</i>	skin	Levy	2000	08 December	F
41817	<i>Vireo</i>	<i>solitarius</i>	skin	Levy	2000	08 December	F
40406	<i>Vireo</i>	<i>olivaceus</i>	skin	Alachua	1998	16 September	M
40497	<i>Vireo</i>	<i>olivaceus</i>	skin	Alachua	1998	29 September	F
40621	<i>Vireo</i>	<i>olivaceus</i>	c skel	Broward	1998	11 October	M
39733	<i>Vireo</i>	<i>olivaceus</i>	c skel	Levy	1996	06 September	M
39734	<i>Vireo</i>	<i>olivaceus</i>	skin	Levy	1996	06 September	U
39811	<i>Vireo</i>	<i>olivaceus</i>	c skel	Levy	1996	13 September	U
39684	<i>Vireo</i>	<i>olivaceus</i>	skin	Levy	1996	06 September	M
41280	<i>Vireo</i>	<i>olivaceus</i>	skin	Levy	2000	28 April	M
41300	<i>Vireo</i>	<i>olivaceus</i>	skin	Levy	2000	10 May	M
41269	<i>Vireo</i>	<i>olivaceus</i>	skin	Levy	2000	19 April	F
41281	<i>Vireo</i>	<i>olivaceus</i>	skin	Levy	2000	28 April	M
41284	<i>Vireo</i>	<i>olivaceus</i>	skin	Levy	2000	28 April	M
41258	<i>Vireo</i>	<i>olivaceus</i>	skin	Levy	2000	12 April	M
41984	<i>Vireo</i>	<i>olivaceus</i>	skin	Levy	2001	27 March	M
41986	<i>Vireo</i>	<i>olivaceus</i>	skin	Levy	2001	27 March	M
42061	<i>Vireo</i>	<i>olivaceus</i>	skin	Levy	2001	25 May	M
41116	<i>Vireo</i>	<i>olivaceus</i>	skin	Palm Beach	1998	02 October	M
41115	<i>Vireo</i>	<i>olivaceus</i>	skin	Palm Beach	1999	18 August	M
40855	<i>Vireo</i>	<i>olivaceus</i>	skin	Volusia	1999	20 June	F
40674	<i>Vireo</i>	<i>altiloquus</i>	c skel	Broward	1999	14 April	M
41027	<i>Cyanocitta</i>	<i>cristata</i>	skin	Broward*	1999	01 May	M
40437	<i>Cyanocitta</i>	<i>cristata</i>	c skel	Broward	1998	20 July	F
40384	<i>Cyanocitta</i>	<i>cristata</i>	skin	Broward	1998	22 April	M
40456	<i>Cyanocitta</i>	<i>cristata</i>	skin	Broward	1998	20 September	M
40825	<i>Cyanocitta</i>	<i>cristata</i>	skin	Broward	1999	28 September	M
40885	<i>Cyanocitta</i>	<i>cristata</i>	skin	Collier	1999	22 September	F
41398	<i>Cyanocitta</i>	<i>cristata</i>	skin	Collier	2000	28 January	M
41405	<i>Cyanocitta</i>	<i>cristata</i>	skin	Collier	2000	25 February	F
40993	<i>Cyanocitta</i>	<i>cristata</i>	skin	Lee	1999	25 October	F
38189	<i>Cyanocitta</i>	<i>cristata</i>	skin	Orange	1993	May	F
40823	<i>Cyanocitta</i>	<i>cristata</i>	skin	Palm Beach	1998	02 November	M
41028	<i>Cyanocitta</i>	<i>cristata</i>	skin	Palm Beach	1999	20 April	M
42038	<i>Aphelocoma</i>	<i>coerulescens</i>	c skel	Highlands	1998	04 May	F
41991	<i>Corvus</i>	<i>brachyrhynchos</i>	c skel	Alachua	2000	27 May	U
39813	<i>Corvus</i>	<i>brachyrhynchos</i>	skin	Levy	1996	13 September	M
41395	<i>Corvus</i>	<i>brachyrhynchos</i>	skin	Levy	2000	28 April	F
41614	<i>Corvus</i>	<i>ossifragus</i>	skin	Alachua	1999	03 July	U
41915	<i>Corvus</i>	<i>ossifragus</i>	skin	Alachua	2001	01 February	F
40344	<i>Corvus</i>	<i>ossifragus</i>	c skel	Palm Beach	1998	06 August	F
40410	<i>Progne</i>	<i>subis</i>	skin	Brevard	1998	24 February	F
40875	<i>Progne</i>	<i>subis</i>	skin	Broward	1998	01 September	F
40693	<i>Progne</i>	<i>subis</i>	skin	Broward	1999	*19 April	F

UF#	genus	species	form	county	year	date	sex
41857	<i>Progne</i>	<i>subis</i>	skin	Lee	2000	26 August	F
40881	<i>Tachycineta</i>	<i>bicolor</i>	skin	Alachua	1999	16 March	U
40882	<i>Tachycineta</i>	<i>bicolor</i>	skin	Alachua	1999	16 March	M
40078	<i>Hirundo</i>	<i>rustica</i>	skin, wing	Levy	1998	22 March	M
39742	<i>Poecile</i>	<i>carolinensis</i>	c skel	Levy	1996	13 September	U
40673	<i>Poecile</i>	<i>carolinensis</i>	skin	Levy	1999	28 May	M
40771	<i>Poecile</i>	<i>carolinensis</i>	skin	Levy	1999	08 September	M
40772	<i>Poecile</i>	<i>carolinensis</i>	skin	Levy	1999	08 September	M
40688	<i>Poecile</i>	<i>carolinensis</i>	skin	Levy	1999	05 March	F
40773	<i>Poecile</i>	<i>carolinensis</i>	skin	Levy	1999	08 September	M
40697	<i>Poecile</i>	<i>carolinensis</i>	skin	Levy	1999	04 June	F
41266	<i>Poecile</i>	<i>carolinensis</i>	skin	Levy	2000	19 April	M
41618	<i>Poecile</i>	<i>carolinensis</i>	skin	Levy	2000	04 August	F
41250	<i>Poecile</i>	<i>carolinensis</i>	skin	Levy	2000	12 April	M
41869	<i>Poecile</i>	<i>carolinensis</i>	skin	Levy	2001	18 January	M
41983	<i>Poecile</i>	<i>carolinensis</i>	skin	Levy	2001	25 May	M
40880	<i>Baeolophus</i>	<i>bicolor</i>	skin	Alachua	1999	09 September	M
39817	<i>Baeolophus</i>	<i>bicolor</i>	skin	Levy	1996	23 October	M
39741	<i>Baeolophus</i>	<i>bicolor</i>	c skel	Levy	1996	13 September	F
39730	<i>Baeolophus</i>	<i>bicolor</i>	c skel	Levy	1996	05 September	F
40428	<i>Baeolophus</i>	<i>bicolor</i>	skin	Levy	1998	30 November	F
40782	<i>Baeolophus</i>	<i>bicolor</i>	skin	Levy	1999	08 September	F
40810	<i>Baeolophus</i>	<i>bicolor</i>	skin	Levy	1999	15 September	F
40672	<i>Baeolophus</i>	<i>bicolor</i>	skin	Levy	1999	28 May	M
40494	<i>Baeolophus</i>	<i>bicolor</i>	skin	Levy	1999	07 January	M
40941	<i>Baeolophus</i>	<i>bicolor</i>	skin	Levy	1999	28 October	M
40950	<i>Baeolophus</i>	<i>bicolor</i>	skin	Levy	1999	28 October	F
41617	<i>Baeolophus</i>	<i>bicolor</i>	skin	Levy	2000	04 August	M
41634	<i>Baeolophus</i>	<i>bicolor</i>	skin	Levy	2000	13 September	F
41827	<i>Thryothorus</i>	<i>ludovicianus</i>	c skel	Alachua	2000	15 December	U
41125	<i>Thryothorus</i>	<i>ludovicianus</i>	skin	Alachua	2000	07 February	M
42060	<i>Thryothorus</i>	<i>ludovicianus</i>	skin	Levy	2001	25 May	F
39732	<i>Thryothorus</i>	<i>ludovicianus</i>	c skel	Levy	1996	06 September	F
41077	<i>Thryothorus</i>	<i>ludovicianus</i>	skin	Levy	1999	26 November	U
40702	<i>Thryothorus</i>	<i>ludovicianus</i>	skin	Levy	1999	04 June	M
40952	<i>Thryothorus</i>	<i>ludovicianus</i>	skin	Levy	1999	28 October	F
41297	<i>Thryothorus</i>	<i>ludovicianus</i>	skin	Levy	2000	10 May	M
41275	<i>Thryothorus</i>	<i>ludovicianus</i>	skin	Levy	2000	19 April	M
41146	<i>Troglodytes</i>	<i>aedon</i>	skin	Alachua	2000	14 February	F
41145	<i>Troglodytes</i>	<i>aedon</i>	skin	Alachua	2000	10 February	U
41813	<i>Troglodytes</i>	<i>aedon</i>	skin	Levy	2000	08 December	F
40851	<i>Regulus</i>	<i>calendula</i>	skin	Levy	1998	07 December	F
40415	<i>Regulus</i>	<i>calendula</i>	skin	Levy	1998	06 November	M
40429	<i>Regulus</i>	<i>calendula</i>	skin	Levy	1998	30 November	F

UF#	genus	species	form	county	year	date	sex
41148	<i>Regulus</i>	<i>calendula</i>	skin	Levy	1999	22 December	F
41147	<i>Regulus</i>	<i>calendula</i>	skin	Levy	1999	22 December	M
40493	<i>Regulus</i>	<i>calendula</i>	skin	Levy	1999	07 January	F
40690	<i>Regulus</i>	<i>calendula</i>	skin	Levy	1999	05 March	F
40685	<i>Regulus</i>	<i>calendula</i>	skin	Levy	1999	09 February	F
40686	<i>Regulus</i>	<i>calendula</i>	skin	Levy	1999	05 March	F
40951	<i>Regulus</i>	<i>calendula</i>	skin	Levy	1999	28 October	M
41045	<i>Regulus</i>	<i>calendula</i>	skin	Levy	1999	01 December	M
41812	<i>Regulus</i>	<i>calendula</i>	skin	Levy	2000	08 December	F
41169	<i>Regulus</i>	<i>calendula</i>	skin	Levy	2000	07 March	F
41788	<i>Regulus</i>	<i>calendula</i>	skin	Levy	2000	15 November	F
41256	<i>Regulus</i>	<i>calendula</i>	skin	Levy	2000	12 April	F
41919	<i>Regulus</i>	<i>calendula</i>	skin	Levy	2001	27 February	M
41866	<i>Regulus</i>	<i>calendula</i>	skin	Levy	2001	18 January	M
41867	<i>Regulus</i>	<i>calendula</i>	skin	Levy	2001	18 January	F
41982	<i>Regulus</i>	<i>calendula</i>	skin	Levy	2001	27 March	M
41975	<i>Regulus</i>	<i>calendula</i>	skin	Levy	2001	27 March	F
39724	<i>Polioptila</i>	<i>caerulea</i>	skin	Levy	1997	16 April	M
40423	<i>Polioptila</i>	<i>caerulea</i>	skin	Levy	1998	30 November	M
40422	<i>Polioptila</i>	<i>caerulea</i>	skin	Levy	1998	30 November	F
40765	<i>Polioptila</i>	<i>caerulea</i>	c skel	Levy	1999	24 June	M
41615	<i>Polioptila</i>	<i>caerulea</i>	skin	Levy	2000	04 August	F
41171	<i>Polioptila</i>	<i>caerulea</i>	skin	Levy	2000	07 March	M
41252	<i>Polioptila</i>	<i>caerulea</i>	skin	Levy	2000	12 April	M
41168	<i>Polioptila</i>	<i>caerulea</i>	skin	Levy	2000	07 March	F
41268	<i>Polioptila</i>	<i>caerulea</i>	skin	Levy	2000	19 April	M
41251	<i>Polioptila</i>	<i>caerulea</i>	skin	Levy	2000	12 April	F
41262	<i>Polioptila</i>	<i>caerulea</i>	skin	Levy	2000	12 April	M
41274	<i>Polioptila</i>	<i>caerulea</i>	skin	Levy	2000	19 April	M
41282	<i>Polioptila</i>	<i>caerulea</i>	skin	Levy	2000	28 April	F
41980	<i>Polioptila</i>	<i>caerulea</i>	skin	Levy	2001	27 March	M
41977	<i>Polioptila</i>	<i>caerulea</i>	skin	Levy	2001	27 March	M
41976	<i>Polioptila</i>	<i>caerulea</i>	skin	Levy	2001	27 March	F
39666	<i>Sialia</i>	<i>sialis</i>	skin	Alachua	1996	12 May	M
41404	<i>Sialia</i>	<i>sialis</i>	skin	Alachua	2000	09 April	M
39664	<i>Catharus</i>	<i>fuscescens</i>	skin	Alachua	1995	08 September	F
40330	<i>Catharus</i>	<i>fuscescens</i>	skin	Alachua	1998	22 September	F
41724	<i>Catharus</i>	<i>fuscescens</i>	p skel, skin	Alachua	2000	14 September	F
40446	<i>Catharus</i>	<i>fuscescens</i>	c skel	Broward	1998	20 September	F
40557	<i>Catharus</i>	<i>fuscescens</i>	skin	Broward	1998	02 October	M
40767	<i>Catharus</i>	<i>fuscescens</i>	c skel, wing	Taylor	1999	01 May	U
42044	<i>Catharus</i>	<i>minimus</i>	c skel	Alachua	2000	10 October	F
39665	<i>Catharus</i>	<i>minimus</i>	skin	Alachua	1995	21 October	F
40815	<i>Catharus</i>	<i>minimus</i>	skin	Levy	1999	14 May	F

UF#	genus	species	form	county	year	date	sex
40918	<i>Catharus</i>	<i>ustulatus</i>	skin	Alachua	1999	08 October	F
41829	<i>Catharus</i>	<i>ustulatus</i>	skin	Alachua	2000	19 October	M
41081	<i>Catharus</i>	<i>ustulatus</i>	skin	Broward	1998	08 October	M
42028	<i>Catharus</i>	<i>ustulatus</i>	c skel	Duval	1995	19 October	M
39737	<i>Catharus</i>	<i>ustulatus</i>	skin	St. Johns	1997	01 October	M
40506	<i>Catharus</i>	<i>guttatus</i>	skin	Alachua	1999	23 February	F
41987	<i>Catharus</i>	<i>guttatus</i>	skin	Levy	2001	27 March	F
40427	<i>Catharus</i>	<i>guttatus</i>	skin	Levy	1998	30 November	F
40495	<i>Catharus</i>	<i>guttatus</i>	skin	Levy	1999	07 January	M
41044	<i>Catharus</i>	<i>guttatus</i>	skin	Levy	1999	01 December	F
40683	<i>Catharus</i>	<i>guttatus</i>	skin	Levy	1999	09 February	F
41819	<i>Catharus</i>	<i>guttatus</i>	skin	Levy	2000	08 December	F
41780	<i>Catharus</i>	<i>guttatus</i>	skin	Levy	2000	15 November	M
41917	<i>Catharus</i>	<i>guttatus</i>	skin	Levy	2001	27 February	F
40439	<i>Catharus</i>	<i>guttatus</i>	c skel	Marion	1997	24 November	U
41807	<i>Hylocichla</i>	<i>mustelina</i>	c skel, wing	Alachua	1999	18 November	M
42045	<i>Hylocichla</i>	<i>mustelina</i>	skin	Alachua	2000	03 October	F
40505	<i>Turdus</i>	<i>migratorius</i>	skin	Alachua	1999	25 February	M
41166	<i>Turdus</i>	<i>migratorius</i>	skin	Alachua	2000	05 March	M
41914	<i>Turdus</i>	<i>migratorius</i>	skin	Alachua	2000	26 December	F
40696	<i>Turdus</i>	<i>migratorius</i>	p skel, wing	Broward	1999	03 April	F
40606	<i>Turdus</i>	<i>migratorius</i>	c skel	Broward	1999	26 February	F
40687	<i>Turdus</i>	<i>migratorius</i>	skin	Levy	1999	05 March	F
41870	<i>Turdus</i>	<i>migratorius</i>	skin	Levy	2001	18 January	F
40405	<i>Dumetella</i>	<i>carolinensis</i>	c skel, wing	Alachua	1994	08 February	F
40463	<i>Dumetella</i>	<i>carolinensis</i>	c skel, wing	Alachua	1998	18 October	M
40462	<i>Dumetella</i>	<i>carolinensis</i>	c skel	Alachua	1998	19 October	M
40877	<i>Dumetella</i>	<i>carolinensis</i>	skin	Alachua	1999	08 October	M
41149	<i>Dumetella</i>	<i>carolinensis</i>	skin	Alachua	2000	07 February	M
41808	<i>Dumetella</i>	<i>carolinensis</i>	skin	Brevard	2000	26 April	F
41021	<i>Dumetella</i>	<i>carolinensis</i>	skin	Broward	1999	16 October	F
40432	<i>Dumetella</i>	<i>carolinensis</i>	c skel	Collier	1996	18 February	M
41399	<i>Dumetella</i>	<i>carolinensis</i>	skin	Collier	2000	10 March	F
41016	<i>Dumetella</i>	<i>carolinensis</i>	skin	Lee	1999	16 October	M
39753	<i>Dumetella</i>	<i>carolinensis</i>	skin	Levy	1996	09 October	U
39754	<i>Dumetella</i>	<i>carolinensis</i>	skin	Levy	1996	09 October	M
40416	<i>Dumetella</i>	<i>carolinensis</i>	skin	Levy	1998	06 November	M
40419	<i>Dumetella</i>	<i>carolinensis</i>	skin	Levy	1998	06 November	M
40887	<i>Dumetella</i>	<i>carolinensis</i>	skin	Levy	1999	24 April	F
40949	<i>Dumetella</i>	<i>carolinensis</i>	skin	Levy	1999	28 October	M
41257	<i>Dumetella</i>	<i>carolinensis</i>	skin	Levy	2000	12 April	M
41157	<i>Dumetella</i>	<i>carolinensis</i>	skin	Levy	2000	25 February	M
39680	<i>Mimus</i>	<i>polyglottos</i>	c skel	Alachua	1996	06 November	M
40826	<i>Mimus</i>	<i>polyglottos</i>	skin	Alachua	1999	14 September	M

UF#	genus	species	form	county	year	date	sex
42077	<i>Mimus</i>	<i>polyglottos</i>	skin	Brevard	2001	29 May	U
40833	<i>Mimus</i>	<i>polyglottos</i>	skin	Broward	1998	19 June	M
41047	<i>Mimus</i>	<i>polyglottos</i>	skin	Broward	1998	08 May	M
41022	<i>Mimus</i>	<i>polyglottos</i>	skin	Broward	1999	10 October	F
41029	<i>Mimus</i>	<i>polyglottos</i>	skin	Broward	1999	20 May	M
40337	<i>Mimus</i>	<i>polyglottos</i>	skin	Levy	1998	19 September	F
41417	<i>Mimus</i>	<i>polyglottos</i>	skin	Palm Beach	1998	18 October	F
40835	<i>Mimus</i>	<i>polyglottos</i>	skin	Palm Beach	1998	13 October	M
40647	<i>Mimus</i>	<i>polyglottos</i>	c skel	Palm Beach	1998	19 October	M
40892	<i>Toxostoma</i>	<i>rufum</i>	skin	Alachua	1999	28 September	F
40899	<i>Toxostoma</i>	<i>rufum</i>	skin	Alachua	1999	13 September	F
41276	<i>Toxostoma</i>	<i>rufum</i>	skin	Alachua	2000	19 April	F
41809	<i>Toxostoma</i>	<i>rufum</i>	skin	Brevard	2000	08 December	M
41810	<i>Toxostoma</i>	<i>rufum</i>	skin	Levy	2000	08 December	F
40831	<i>Sturnus</i>	<i>vulgaris</i>	skin	Palm Beach	1998	26 April	F
40306	<i>Sturnus</i>	<i>vulgaris</i>	skin	Palm Beach	1998	07 April	F
41394	<i>Acridotheres</i>	<i>tristis</i>	skin	Broward*	1999	received	F
39045	<i>Bombycilla</i>	<i>cedrorum</i>	skin	Alachua	1995	19 March	U
40430	<i>Bombycilla</i>	<i>cedrorum</i>	c skel, wing	Alachua	1995	15 February	U
40332	<i>Bombycilla</i>	<i>cedrorum</i>	skin	Alachua	1997	06 February	F
40478	<i>Bombycilla</i>	<i>cedrorum</i>	skin	Alachua	1997	06 February	F
40465	<i>Bombycilla</i>	<i>cedrorum</i>	skin	Alachua	1997	06 February	F
40477	<i>Bombycilla</i>	<i>cedrorum</i>	skin	Alachua	1997	06 February	M
39978	<i>Bombycilla</i>	<i>cedrorum</i>	skin	Alachua	1997	06 February	F
40466	<i>Bombycilla</i>	<i>cedrorum</i>	skin	Alachua	1997	06 February	M
39949	<i>Bombycilla</i>	<i>cedrorum</i>	p skel, skin	Alachua	1997	06 February	F
39667	<i>Bombycilla</i>	<i>cedrorum</i>	skin	Alachua	1997	01 February	F
39950	<i>Bombycilla</i>	<i>cedrorum</i>	c skel	Alachua	1997	06 February	F
39961	<i>Bombycilla</i>	<i>cedrorum</i>	p skel, skin	Alachua	1997	06 February	F
39895	<i>Bombycilla</i>	<i>cedrorum</i>	skin	Alachua	1997	06 February	M
39894	<i>Bombycilla</i>	<i>cedrorum</i>	p skel, skin	Alachua	1997	06 February	M
39979	<i>Bombycilla</i>	<i>cedrorum</i>	skin	Alachua	1997	06 February	F
39668	<i>Bombycilla</i>	<i>cedrorum</i>	skin	Alachua	1997	06 February	F
40040	<i>Bombycilla</i>	<i>cedrorum</i>	skin	Alachua	1997	06 February	F
40480	<i>Bombycilla</i>	<i>cedrorum</i>	skin	Alachua	1999	27 January	F
40822	<i>Bombycilla</i>	<i>cedrorum</i>	skin	Alachua	1999	13 February	M
40498	<i>Bombycilla</i>	<i>cedrorum</i>	skin	Alachua	1999	28 January	M
41407	<i>Bombycilla</i>	<i>cedrorum</i>	skin	Alachua	2000	24 March	F
41393	<i>Bombycilla</i>	<i>cedrorum</i>	skin	Alachua	2000	04 May	F
41998	<i>Bombycilla</i>	<i>cedrorum</i>	skin	Brevard	2000	23 December	M
40824	<i>Bombycilla</i>	<i>cedrorum</i>	skin	Broward*	1999	06 January	M
40886	<i>Bombycilla</i>	<i>cedrorum</i>	skin	Broward	1999	25 February	F
40834	<i>Bombycilla</i>	<i>cedrorum</i>	skin	Broward	1999	30 January	M
40832	<i>Bombycilla</i>	<i>cedrorum</i>	skin	Broward	1999	31 January	F

UF#	genus	species	form	county	year	date	sex
40828	<i>Bombycilla</i>	<i>cedrorum</i>	skin	Duval	1999	15 February	M
39687	<i>Vermivora</i>	<i>peregrina</i>	skin	Alachua	1996	09 October	F
41643	<i>Vermivora</i>	<i>peregrina</i>	skin	Alachua	2000	15 September	F
41927	<i>Vermivora</i>	<i>celata</i>	skin	Alachua	2001	24 January	M
41978	<i>Vermivora</i>	<i>celata</i>	skin	Levy	2001	27 March	F
40455	<i>Vermivora</i>	<i>ruficapilla</i>	skin, p skel	Broward	1998	22 October	M
40461	<i>Parula</i>	<i>americana</i>	c skel	Broward	1998	10 March	F
41162	<i>Parula</i>	<i>americana</i>	skin	Broward	1998	25 November	U
40639	<i>Parula</i>	<i>americana</i>	skin	Broward	1999	09 February	F
42042	<i>Parula</i>	<i>americana</i>	skin	Broward	2001	22 March	F
40692	<i>Parula</i>	<i>americana</i>	skin	Levy	1999	05 March	M
40777	<i>Parula</i>	<i>americana</i>	skin	Levy	1999	08 September	F
40776	<i>Parula</i>	<i>americana</i>	skin	Levy	1999	08 September	M
40670	<i>Parula</i>	<i>americana</i>	skin	Levy	1999	28 May	M
40698	<i>Parula</i>	<i>americana</i>	skin	Levy	1999	04 June	M
41170	<i>Parula</i>	<i>americana</i>	skin	Levy	2000	07 March	M
41254	<i>Parula</i>	<i>americana</i>	skin	Levy	2000	12 April	M
41249	<i>Parula</i>	<i>americana</i>	skin	Levy	2000	12 April	M
41298	<i>Parula</i>	<i>americana</i>	skin	Levy	2000	10 May	M
41272	<i>Parula</i>	<i>americana</i>	skin	Levy	2000	19 April	M
41916	<i>Parula</i>	<i>americana</i>	skin	Levy	2001	27 February	M
40652	<i>Parula</i>	<i>americana</i>	c skel, wing	Palm Beach	1998	12 October	M
40853	<i>Parula</i>	<i>americana</i>	skin	Volusia	1999	20 June	M
41772	<i>Dendroica</i>	<i>pensylvanica</i>	skin	Alachua	2000	04 October	F
40984	<i>Dendroica</i>	<i>magnolia</i>	skin	Palm Beach	1999	24 September	F
41901	<i>Dendroica</i>	<i>tigrina</i>	c skel, wing	Broward	2000	05 April	M
41638	<i>Dendroica</i>	<i>tigrina</i>	skin	Broward	2000	17 August	M
41414	<i>Dendroica</i>	<i>caerulescens</i>	c skel, wing	Broward*	1999	18 April	F
41413	<i>Dendroica</i>	<i>caerulescens</i>	c skel, wing	Broward	1998	01 October	M
41109	<i>Dendroica</i>	<i>caerulescens</i>	skin	Broward	1999	24 September	M
41049	<i>Dendroica</i>	<i>caerulescens</i>	skin	Palm Beach	1998	27 October	M
40627	<i>Dendroica</i>	<i>caerulescens</i>	skin	Palm Beach	1998	21 October	M
41173	<i>Dendroica</i>	<i>caerulescens</i>	skin	Palm Beach	1998	22 October	M
39688	<i>Dendroica</i>	<i>coronata</i>	skin	Alachua	1997	05 February	F
40436	<i>Dendroica</i>	<i>coronata</i>	skin	Alachua	1998	15 March	M
41073	<i>Dendroica</i>	<i>coronata</i>	skin	Alachua	1999	01 November	M
41408	<i>Dendroica</i>	<i>coronata</i>	skin	Alachua	1999	29 January	F
41401	<i>Dendroica</i>	<i>coronata</i>	skin	Collier	2000	26 February	F
39819	<i>Dendroica</i>	<i>coronata</i>	skin	Levy	1996	23 October	F
39818	<i>Dendroica</i>	<i>coronata</i>	skin	Levy	1996	23 October	M
39735	<i>Dendroica</i>	<i>coronata</i>	skin	Levy	1997	16 April	F
40849	<i>Dendroica</i>	<i>coronata</i>	skin	Levy	1998	07 December	M
40420	<i>Dendroica</i>	<i>coronata</i>	skin	Levy	1998	06 November	M
40425	<i>Dendroica</i>	<i>coronata</i>	skin	Levy	1998	30 November	F

UF#	genus	species	form	county	year	date	sex
40412	<i>Dendroica</i>	<i>coronata</i>	skin	Levy	1998	24 November	U
40413	<i>Dendroica</i>	<i>coronata</i>	skin	Levy	1998	06 November	F
40850	<i>Dendroica</i>	<i>coronata</i>	skin	Levy	1998	07 December	M
40490	<i>Dendroica</i>	<i>coronata</i>	skin	Levy	1999	08 January	M
40691	<i>Dendroica</i>	<i>coronata</i>	skin	Levy	1999	05 March	M
40684	<i>Dendroica</i>	<i>coronata</i>	skin	Levy	1999	09 February	M
40947	<i>Dendroica</i>	<i>coronata</i>	skin	Levy	1999	28 October	F
40492	<i>Dendroica</i>	<i>coronata</i>	skin	Levy	1999	07 January	F
40945	<i>Dendroica</i>	<i>coronata</i>	skin	Levy	1999	28 October	M
40946	<i>Dendroica</i>	<i>coronata</i>	skin	Levy	1999	28 October	F
40491	<i>Dendroica</i>	<i>coronata</i>	skin	Levy	1999	07 January	M
40943	<i>Dendroica</i>	<i>coronata</i>	skin	Levy	1999	28 October	M
41784	<i>Dendroica</i>	<i>coronata</i>	skin	Levy	2000	15 November	M
41787	<i>Dendroica</i>	<i>coronata</i>	skin	Levy	2000	15 November	M
41781	<i>Dendroica</i>	<i>coronata</i>	skin	Levy	2000	15 November	F
41785	<i>Dendroica</i>	<i>coronata</i>	skin	Levy	2000	15 November	M
41786	<i>Dendroica</i>	<i>coronata</i>	skin	Levy	2000	15 November	M
41782	<i>Dendroica</i>	<i>coronata</i>	skin	Levy	2000	15 November	F
41783	<i>Dendroica</i>	<i>coronata</i>	skin	Levy	2000	15 November	F
41922	<i>Dendroica</i>	<i>coronata</i>	skin	Levy	2001	27 February	M
41918	<i>Dendroica</i>	<i>coronata</i>	skin	Levy	2001	27 February	F
41862	<i>Dendroica</i>	<i>coronata</i>	skin	Levy	2001	18 January	F
41923	<i>Dendroica</i>	<i>coronata</i>	skin	Levy	2001	27 February	F
41865	<i>Dendroica</i>	<i>coronata</i>	skin	Levy	2001	18 January	M
41863	<i>Dendroica</i>	<i>coronata</i>	skin	Levy	2001	18 January	M
41864	<i>Dendroica</i>	<i>coronata</i>	skin	Levy	2001	18 January	F
40584	<i>Dendroica</i>	<i>virens</i>	skin	Broward*	1998	28 October	M
41154	<i>Dendroica</i>	<i>virens</i>	skin	Broward	1999	04 November	F
40998	<i>Dendroica</i>	<i>virens</i>	skin	Broward	1999	16 October	F
39812	<i>Dendroica</i>	<i>fusca</i>	skin	Levy	1996	13 September	M
41723	<i>Dendroica</i>	<i>fusca</i>	skin	Levy	2000	18 October	M
41722	<i>Dendroica</i>	<i>fusca</i>	c skel	Levy	2000	03 October	M
42043	<i>Dendroica</i>	<i>dominica</i>	skin	Duval	2001	09 January	M
39816	<i>Dendroica</i>	<i>dominica</i>	skin	Levy	1996	23 October	M
39755	<i>Dendroica</i>	<i>dominica</i>	skin	Levy	1996	05 September	F
40948	<i>Dendroica</i>	<i>dominica</i>	skin	Levy	1999	28 October	M
40783	<i>Dendroica</i>	<i>dominica</i>	skin	Levy	1999	08 September	F
40489	<i>Dendroica</i>	<i>dominica</i>	skin	Levy	1999	08 January	U
41299	<i>Dendroica</i>	<i>dominica</i>	skin	Levy	2000	10 May	M
41635	<i>Dendroica</i>	<i>dominica</i>	skin	Levy	2000	13 September	F
41835	<i>Dendroica</i>	<i>pinus</i>	skin	Alachua	2000	20 December	M
41941	<i>Dendroica</i>	<i>pinus</i>	c skel	Alachua	2001	14 January	F
39815	<i>Dendroica</i>	<i>pinus</i>	skin	Levy	1996	13 September	M
40424	<i>Dendroica</i>	<i>pinus</i>	skin	Levy	1998	30 November	M

UF#	genus	species	form	county	year	date	sex
40701	<i>Dendroica</i>	<i>pinus</i>	skin	Levy	1999	04 June	F
41816	<i>Dendroica</i>	<i>pinus</i>	skin	Levy	2000	08 December	M
41622	<i>Dendroica</i>	<i>pinus</i>	c skel, wing	Levy	2000	04 August	M
41981	<i>Dendroica</i>	<i>pinus</i>	c skel	Levy	2001	27 March	F
42059	<i>Dendroica</i>	<i>pinus</i>	skin	Levy	2001	25 May	F
42058	<i>Dendroica</i>	<i>pinus</i>	skin	Levy	2001	25 May	F
41420	<i>Dendroica</i>	<i>discolor</i>	skin	Brevard	2000	20 April	M
41135	<i>Dendroica</i>	<i>discolor</i>	skin	Broward	1999	18 August	M
41839	<i>Dendroica</i>	<i>discolor</i>	skin	Broward	2000	27 March	M
41902	<i>Dendroica</i>	<i>discolor</i>	skin	Broward	2000	11 April	F
40705	<i>Dendroica</i>	<i>palmarum</i>	c skel	Broward	1999	07 February	U
40434	<i>Dendroica</i>	<i>palmarum</i>	c skel	Collier	1997	23 October	M
41400	<i>Dendroica</i>	<i>palmarum</i>	skin	Collier	2000	01 February	M
39736	<i>Dendroica</i>	<i>palmarum</i>	skin	Levy	1997	16 April	U
39725	<i>Dendroica</i>	<i>palmarum</i>	skin	Levy	1997	16 April	M
41253	<i>Dendroica</i>	<i>palmarum</i>	skin	Levy	2000	12 April	F
40481	<i>Dendroica</i>	<i>palmarum</i>	skin	Polk	1998	02 October	M
40904	<i>Dendroica</i>	<i>castanea</i>	skin	St. Johns	1998	18 October	M
40836	<i>Mniotilta</i>	<i>varia</i>	skin	Broward	1998	24 September	M
40414	<i>Mniotilta</i>	<i>varia</i>	skin	Levy	1998	06 November	M
40418	<i>Mniotilta</i>	<i>varia</i>	skin	Levy	1998	06 November	M
40852	<i>Mniotilta</i>	<i>varia</i>	skin	Levy	1998	07 December	U
40848	<i>Mniotilta</i>	<i>varia</i>	c skel, wing	Levy	1998	07 December	F
40682	<i>Mniotilta</i>	<i>varia</i>	skin	Levy	1999	09 February	F
41267	<i>Mniotilta</i>	<i>varia</i>	skin	Levy	2000	19 April	M
41273	<i>Mniotilta</i>	<i>varia</i>	skin	Levy	2000	19 April	F
41156	<i>Mniotilta</i>	<i>varia</i>	skin	Levy	2000	25 February	M
41283	<i>Mniotilta</i>	<i>varia</i>	skin	Levy	2000	28 April	F
41868	<i>Mniotilta</i>	<i>varia</i>	skin	Levy	2001	18 January	M
41920	<i>Mniotilta</i>	<i>varia</i>	skin	Levy	2001	27 February	F
42021	<i>Mniotilta</i>	<i>varia</i>	skin	Levy	2001	30 April	F
39043	<i>Setophaga</i>	<i>ruticilla</i>	skin	Alachua	1995	17 September	F
40888	<i>Setophaga</i>	<i>ruticilla</i>	skin	Alachua	1999	24 September	F
39958	<i>Setophaga</i>	<i>ruticilla</i>	p skel, skin	Brevard	1997	26 May	F
41411	<i>Setophaga</i>	<i>ruticilla</i>	c skel	Broward	1998	04 October	M
40712	<i>Setophaga</i>	<i>ruticilla</i>	c skel, wing	Broward	1998	20 September	M
41412	<i>Setophaga</i>	<i>ruticilla</i>	skin	Broward	1999	22 April	M
41067	<i>Protonotaria</i>	<i>citrea</i>	skin	Broward	1998	08 September	M
41083	<i>Protonotaria</i>	<i>citrea</i>	skin	Broward	1999	16 April	M
41903	<i>Protonotaria</i>	<i>citrea</i>	skin	Broward	2000	16 August	M
41858	<i>Protonotaria</i>	<i>citrea</i>	skin	Lee	2000	05 August	U
41624	<i>Protonotaria</i>	<i>citrea</i>	skin	Levy	2000	04 August	M
41623	<i>Protonotaria</i>	<i>citrea</i>	skin	Levy	2000	04 August	M
42064	<i>Protonotaria</i>	<i>citrea</i>	skin	Levy	2001	25 May	M

UF#	genus	species	form	county	year	date	sex
40656	<i>Helmitheros</i>	<i>vermivorus</i>	skin	Broward	1998	12 September	F
40695	<i>Helmitheros</i>	<i>vermivorus</i>	c skel	Broward	1999	16 April	F
41134	<i>Helmitheros</i>	<i>vermivorus</i>	skin	Dade	1999	28 September	M
40626	<i>Helmitheros</i>	<i>vermivorus</i>	skin	Palm Beach	1998	10 April	M
40623	<i>Seiurus</i>	<i>aurocapillus</i>	c skel	Broward	1998	05 October	M
39686	<i>Seiurus</i>	<i>aurocapillus</i>	skin	Levy	1996	13 September	U
41017	<i>Seiurus</i>	<i>aurocapillus</i>	c skel	Broward*	1999	26 September	M
41418	<i>Seiurus</i>	<i>aurocapillus</i>	skin	Brevard	2000	26 April	U
40713	<i>Seiurus</i>	<i>aurocapillus</i>	c skel	Broward	1998	28 September	M
40711	<i>Seiurus</i>	<i>aurocapillus</i>	c skel	Broward	1998	20 September	M
41061	<i>Seiurus</i>	<i>aurocapillus</i>	skin	Broward	1998	10 September	U
40383	<i>Seiurus</i>	<i>aurocapillus</i>	skin	Broward	1998	12 May	M
40619	<i>Seiurus</i>	<i>aurocapillus</i>	c skel	Broward	1998	11 October	M
41018	<i>Seiurus</i>	<i>aurocapillus</i>	c skel	Broward	1999	13 September	F
41068	<i>Seiurus</i>	<i>aurocapillus</i>	skin	Broward	1999	03 September	M
41066	<i>Seiurus</i>	<i>aurocapillus</i>	skin	Broward	1999	03 September	F
41814	<i>Seiurus</i>	<i>aurocapillus</i>	skin	Levy	2000	08 December	U
41660	<i>Seiurus</i>	<i>aurocapillus</i>	skin	Levy	2000	22 September	F
41661	<i>Seiurus</i>	<i>aurocapillus</i>	skin	Levy	2000	22 September	M
41046	<i>Seiurus</i>	<i>noveboracensis</i>	skin	Broward*	1999	27 April	M
40870	<i>Seiurus</i>	<i>noveboracensis</i>	skin	Alachua	1999	01 September	M
41778	<i>Seiurus</i>	<i>noveboracensis</i>	c skel	Alachua	2000	07 October	F
41828	<i>Seiurus</i>	<i>noveboracensis</i>	c skel	Alachua	2000	18 October	F
42048	<i>Seiurus</i>	<i>noveboracensis</i>	skin	Alachua	2001	20 May	F
40451	<i>Seiurus</i>	<i>noveboracensis</i>	c skel, wing	Broward	1998	06 September	M
41053	<i>Seiurus</i>	<i>noveboracensis</i>	p skel, wing	Broward	1999	05 May	M
41069	<i>Seiurus</i>	<i>noveboracensis</i>	skin	Broward	1999	16 September	M
41248	<i>Seiurus</i>	<i>noveboracensis</i>	skin	Levy	2000	12 April	M
40703	<i>Seiurus</i>	<i>noveboracensis</i>	skin	Palm Beach	1999	12 May	F
40471	<i>Seiurus</i>	<i>motacilla</i>	skin	Marion	1992	25 March	M
42176	<i>Seiurus</i>	<i>motacilla</i>	skin	Duval	2001	19 July	M
39957	<i>Oporornis</i>	<i>formosus</i>	p skel, skin	Levy	1997	26 September	M
40300	<i>Oporornis</i>	<i>agilis</i>	c skel	Broward*	1998	received	F
40650	<i>Oporornis</i>	<i>agilis</i>	skin	Broward*	1999	received	M
40302	<i>Oporornis</i>	<i>agilis</i>	p skel, skin	Broward	1998	10 May	M
40301	<i>Oporornis</i>	<i>agilis</i>	p skel, skin	Broward	1998	11 May	F
40768	<i>Oporornis</i>	<i>agilis</i>	p skel, skin	Broward	1999	02 May	M
42211	<i>Oporornis</i>	<i>agilis</i>	skin	Palm Beach	2001	15 May	M
40708	<i>Geothlypis</i>	<i>trichas</i>	c skel, wing	Broward*	1999	16 May	F
39042	<i>Geothlypis</i>	<i>trichas</i>	skin	Alachua	1996	26 April	M
41825	<i>Geothlypis</i>	<i>trichas</i>	skin	Alachua	2000	20 September	M
40714	<i>Geothlypis</i>	<i>trichas</i>	c skel	Broward	1998	11 October	M
40680	<i>Geothlypis</i>	<i>trichas</i>	skin	Broward	1999	29 April	M
41415	<i>Geothlypis</i>	<i>trichas</i>	skin	Broward	1999	11 May	F

UF#	genus	species	form	county	year	date	sex
40707	<i>Geothlypis</i>	<i>trichas</i>	c skel	Broward	1999	17 May	F
41072	<i>Geothlypis</i>	<i>trichas</i>	wing	Clay	1998	21 October	F
40431	<i>Geothlypis</i>	<i>trichas</i>	skin	Collier	1997	23 October	M
40700	<i>Geothlypis</i>	<i>trichas</i>	skin	Levy	1999	04 June	M
40944	<i>Geothlypis</i>	<i>trichas</i>	skin	Levy	1999	28 October	M
40811	<i>Geothlypis</i>	<i>trichas</i>	skin	Levy	1999	15 September	F
40699	<i>Geothlypis</i>	<i>trichas</i>	skin	Levy	1999	04 June	M
41616	<i>Geothlypis</i>	<i>trichas</i>	skin	Levy	2000	04 August	F
41632	<i>Geothlypis</i>	<i>trichas</i>	skin	Levy	2000	13 September	M
41247	<i>Geothlypis</i>	<i>trichas</i>	skin	Levy	2000	12 April	M
41295	<i>Geothlypis</i>	<i>trichas</i>	skin	Levy	2000	10 May	M
41621	<i>Geothlypis</i>	<i>trichas</i>	skin	Levy	2000	04 August	M
41924	<i>Geothlypis</i>	<i>trichas</i>	skin	Levy	2001	27 February	M
39041	<i>Wilsonia</i>	<i>citrina</i>	skin	Alachua	1995	03 April	M
41820	<i>Wilsonia</i>	<i>citrina</i>	skin	Alachua	2000	09 October	M
22233	<i>Wilsonia</i>	<i>citrina</i>	skin, wing	Gilchrist	1992	April	M
40553	<i>Piranga</i>	<i>olivacea</i>	skin	Broward	1998	13 October	F
40411	<i>Piranga</i>	<i>rubra</i>	c skel	Alachua	1994	19 September	U
40840	<i>Piranga</i>	<i>rubra</i>	skin	Alachua	1999	13 July	F
41063	<i>Piranga</i>	<i>rubra</i>	skin	Broward	1999	27 September	M
40669	<i>Piranga</i>	<i>rubra</i>	skin	Levy	1999	28 May	M
40668	<i>Piranga</i>	<i>rubra</i>	skin	Levy	1999	28 May	F
41636	<i>Piranga</i>	<i>rubra</i>	skin	Levy	2000	13 September	F
42057	<i>Piranga</i>	<i>rubra</i>	skin	Levy	2001	25 May	M
40377	<i>Pipilo</i>	<i>erythrophthalmus</i>	c skel	Alachua	1998	received	M
41999	<i>Pipilo</i>	<i>erythrophthalmus</i>	skin	Alachua	2000	24 April	F
42000	<i>Pipilo</i>	<i>erythrophthalmus</i>	skin	Alachua	2000	23 March	M
42056	<i>Pipilo</i>	<i>erythrophthalmus</i>	skin	Levy	2001	25 May	F
42055	<i>Pipilo</i>	<i>erythrophthalmus</i>	skin	Levy	2001	25 May	M
39648	<i>Aimophila</i>	<i>aestivalis</i>	p skel, skin	Highlands	1996	03 June	M
41806	<i>Spizella</i>	<i>passerina</i>	skin	Alachua	2000	16 March	F
39670	<i>Ammodramus</i>	<i>savannarum</i>	skin	Alachua	1992	02 November	M
41086	<i>Ammodramus</i>	<i>savannarum</i>	skin	Clay	1999	29 October	M
39334	<i>Ammodramus</i>	<i>savannarum</i>	p skel, flat skin	Highlands	1996	20 August	F
39366	<i>Ammodramus</i>	<i>savannarum</i>	p skel, wings	Highlands	1996	02 July	U
41165	<i>Ammodramus</i>	<i>savannarum</i>	alcohol	Highlands	1997	06 July	U
39956	<i>Ammodramus</i>	<i>savannarum</i>	skin	Highlands	1997	22 December	F
40245	<i>Ammodramus</i>	<i>savannarum</i>	p skel, feathers	Highlands	1998	22 July	U
39682	<i>Ammodramus</i>	<i>savannarum</i>	c skel	Leon	1993	29 March	U
39669	<i>Ammodramus</i>	<i>savannarum</i>	skin	Marion	1996	01 May	U
41164	<i>Ammodramus</i>	<i>savannarum</i>	alcohol	Osceola	1997	19 May	U
40326	<i>Ammodramus</i>	<i>savannarum</i>	p skel, flat skin	Osceola	1998	22 February	F
40547	<i>Melospiza</i>	<i>georgiana</i>	skin	Alachua	1998	12 November	M
41255	<i>Melospiza</i>	<i>georgiana</i>	skin	Levy	2000	12 April	M

UF#	genus	species	form	county	year	date	sex
41815	<i>Melospiza</i>	<i>georgiana</i>	skin	Levy	2000	08 December	F
40094	<i>Cardinalis</i>	<i>cardinalis</i>	skin	Alachua	1995	26 January	M
41403	<i>Cardinalis</i>	<i>cardinalis</i>	skin	Alachua	1999	23 March	F
40715	<i>Cardinalis</i>	<i>cardinalis</i>	c skel	Alachua	1999	26 February	F
40997	<i>Cardinalis</i>	<i>cardinalis</i>	skin	Brevard	1999	03 November	M
42065	<i>Cardinalis</i>	<i>cardinalis</i>	skin	Brevard	2001	29 May	F
41019	<i>Cardinalis</i>	<i>cardinalis</i>	skin	Broward	1998	26 August	M
39960	<i>Cardinalis</i>	<i>cardinalis</i>	skin	Citrus	1997	29 December	F
39739	<i>Cardinalis</i>	<i>cardinalis</i>	c skel	Levy	1996	06 September	M
39731	<i>Cardinalis</i>	<i>cardinalis</i>	c skel	Levy	1996	05 September	M
39738	<i>Cardinalis</i>	<i>cardinalis</i>	c skel	Levy	1996	06 September	M
39820	<i>Cardinalis</i>	<i>cardinalis</i>	skin	Levy	1997	22 March	M
40426	<i>Cardinalis</i>	<i>cardinalis</i>	skin	Levy	1998	30 November	M
40689	<i>Cardinalis</i>	<i>cardinalis</i>	skin	Levy	1999	05 March	F
40671	<i>Cardinalis</i>	<i>cardinalis</i>	skin	Levy	1999	28 May	M
40813	<i>Cardinalis</i>	<i>cardinalis</i>	skin	Levy	1999	15 September	M
41285	<i>Cardinalis</i>	<i>cardinalis</i>	skin	Levy	2000	28 April	M
41619	<i>Cardinalis</i>	<i>cardinalis</i>	skin	Levy	2000	04 August	F
41779	<i>Cardinalis</i>	<i>cardinalis</i>	skin	Levy	2000	15 November	M
41620	<i>Cardinalis</i>	<i>cardinalis</i>	skin	Levy	2000	04 August	F
41925	<i>Cardinalis</i>	<i>cardinalis</i>	skin	Levy	2001	27 February	F
41926	<i>Cardinalis</i>	<i>cardinalis</i>	skin	Levy	2001	27 February	M
42001	<i>Cardinalis</i>	<i>cardinalis</i>	skin	Marion	2000	19 August	F
40927	<i>Pheucticus</i>	<i>ludovicianus</i>	skin, wing	Alachua	1999	17 October	M
40994	<i>Pheucticus</i>	<i>ludovicianus</i>	skin	Brevard	1999	18 October	M
42029	<i>Pheucticus</i>	<i>ludovicianus</i>	c skel, wing	Duval	1999	23 October	U
40095	<i>Passerina</i>	<i>cyanea</i>	skin	Alachua	1998	18 April	M
41826	<i>Passerina</i>	<i>cyanea</i>	c skel	Alachua	1999	07 October	F
41830	<i>Passerina</i>	<i>cyanea</i>	c skel, wing	Alachua	2000	10 October	M
41076	<i>Passerina</i>	<i>cyanea</i>	skin	Levy	1999	14 October	F
41023	<i>Passerina</i>	<i>cyanea</i>	skin	Palm Beach	1998	24 April	M
42040	<i>Passerina</i>	<i>ciris</i>	c skel	Brevard	2000	03 October	M
40663	<i>Passerina</i>	<i>ciris</i>	p skel, skin	Broward	1999	14 April	M
41153	<i>Dolichonyx</i>	<i>oryzivorus</i>	skin	Broward*	1999	08 May	F
40154	<i>Agelaius</i>	<i>phoeniceus</i>	skin	Alachua	1992	no date	M
40100	<i>Agelaius</i>	<i>phoeniceus</i>	skin	Alachua	1998	19 May	M
40123	<i>Agelaius</i>	<i>phoeniceus</i>	skin	Alachua	1998	19 May	M
42067	<i>Agelaius</i>	<i>phoeniceus</i>	skin	Alachua	1999	07 September	M
42068	<i>Agelaius</i>	<i>phoeniceus</i>	skin	Brevard	2001	29 May	F
42069	<i>Agelaius</i>	<i>phoeniceus</i>	skin	Brevard	2001	29 May	F
42070	<i>Agelaius</i>	<i>phoeniceus</i>	skin	Brevard	2001	29 May	M
40890	<i>Agelaius</i>	<i>phoeniceus</i>	skin	Brevard	2001	29 May	F
40819	<i>Agelaius</i>	<i>phoeniceus</i>	skin	Marion	1999	25 February	M

UF#	genus	species	form	county	year	date	sex
40839	<i>Agelaius</i>	<i>phoeniceus</i>	skin	Marion	1999	26 February	M
40838	<i>Agelaius</i>	<i>phoeniceus</i>	skin	Marion	1999	23 February	M
40827	<i>Agelaius</i>	<i>phoeniceus</i>	skin	Marion	1999	24 February	M
41904	<i>Sturnella</i>	<i>magna</i>	skin	Broward	2000	29 April	M
40164	<i>Quiscalus</i>	<i>quiscula</i>	skin	Alachua	1998	02 June	M
42066	<i>Quiscalus</i>	<i>quiscula</i>	skin	Brevard	2001	29 May	M
41065	<i>Quiscalus</i>	<i>quiscula</i>	skin	Broward	1998	01 April	F
40817	<i>Quiscalus</i>	<i>quiscula</i>	skin	Broward	1999	received	M
40476	<i>Quiscalus</i>	<i>quiscula</i>	skin	Levy	1999	08 January	M
41259	<i>Quiscalus</i>	<i>quiscula</i>	skin	Levy	2000	12 April	F
41260	<i>Quiscalus</i>	<i>quiscula</i>	skin	Levy	2000	12 April	M
42022	<i>Quiscalus</i>	<i>quiscula</i>	skin	Levy	3001	30 April	M
40829	<i>Quiscalus</i>	<i>quiscula</i>	skin	Palm Beach	1998	12 August	M
40651	<i>Quiscalus</i>	<i>quiscula</i>	skin	Palm Beach	1999	*01 March	M
40307	<i>Quiscalus</i>	<i>major</i>	c skel	Alachua	1994	01 October	M
42074	<i>Quiscalus</i>	<i>major</i>	c skel	Brevard	2001	29 May	F
42075	<i>Quiscalus</i>	<i>major</i>	c skel	Brevard	2001	29 May	M
42076	<i>Quiscalus</i>	<i>major</i>	skin	Brevard	2001	29 May	F
42073	<i>Quiscalus</i>	<i>major</i>	skin	Brevard	2001	29 May	M
40601	<i>Quiscalus</i>	<i>major</i>	skin	Broward	1998	*06 March	M
40821	<i>Quiscalus</i>	<i>major</i>	skin	Broward	1999	09 February	F
40453	<i>Quiscalus</i>	<i>major</i>	c skel, wing	Dade	1998	10 December	M
40586	<i>Quiscalus</i>	<i>major</i>	skin	Alachua	1997	06 November	F
40820	<i>Quiscalus</i>	<i>major</i>	skin	Palm Beach	1998	21 April	M
41801	<i>Quiscalus</i>	<i>major</i>	skin	Pinellas	2000	received	M
41263	<i>Molothrus</i>	<i>bonariensis</i>	p skel, skin	Alachua	2000	31 March	M
40642	<i>Icterus</i>	<i>pectoralis</i>	c skel, wing	Broward	1998	14 September	M
41101	<i>Icterus</i>	<i>pectoralis</i>	skin	Broward	1999	24 November	F
40658	<i>Icterus</i>	<i>pectoralis</i>	skin	Palm Beach	1998	16 October	M
42041	<i>Icterus</i>	<i>galbula</i>	skin	Brevard	2000	02 October	F
41015	<i>Icterus</i>	<i>galbula</i>	skin	Broward*	1999	no date	F
40645	<i>Icterus</i>	<i>galbula</i>	skin	Broward	1998	23 September	F
40764	<i>Carpodacus</i>	<i>mexicanus</i>	skin	Alachua	1999	31 July	M
41641	<i>Carpodacus</i>	<i>mexicanus</i>	skin	Broward	2000	24 April	M
39689	<i>Carduelis</i>	<i>tristis</i>	skin	Alachua	1996	09 April	F
41942	<i>Carduelis</i>	<i>tristis</i>	skin	Alachua	2001	01 February	F
40926	<i>Passer</i>	<i>domesticus</i>	skin	Alachua	1999	February	M
41025	<i>Passer</i>	<i>domesticus</i>	skin	Alachua	1999	*13 February	M
41026	<i>Passer</i>	<i>domesticus</i>	skin	Alachua	1999	*15 February	F
41126	<i>Passer</i>	<i>domesticus</i>	skin	Collier	1999	11 November	F

INDEX

- Accipiter cooperii* 119
Acridotheres tristis 126
Ammodramus savannarum 128
Asio flammeus 125
 BITTERN, AMERICAN 118
Bombycilla cedrorum 126
 BOOBY, BROWN 118
Botaurus lentiginosus 118
Brachyramphus [marmoratus] pernix 124
Buteo
 brachyurus 119
 platypterus 119
Calidris maritima 120
Calonectris diomedea 115
Caracara cheriway 119
 CARACARA, CRESTED 119
Carpodacus mexicanus 129
Charadrius alexandrinus 120
Chordeiles acutipennis 125
 COLLARED-DOVE, EURASIAN 124
Columba leucocephala 124
 COWBIRD, SHINY 128
 CRANE, WHOOPING 120
Dendroica
 castanea 127
 magnolia 127
 virens 127
 DOVE
 COLLARED-, *see* COLLARED-DOVE
 WHITE-WINGED 125
Falco
 columbarius 120
 peregrinus 120
 FALCON, PEREGRINE 120
 FINCH, HOUSE 129
 GROSBK, ROSE-BREASTED 128
Grus americana 120
 GULL
 GREAT BLACK-BACKED 122
 LESSER BLACK-BACKED 122
 HAWK
 BROAD-WINGED 119
 COOPER'S 119
 SHORT-TAILED 119
Icterus pectoralis 128
 JAEGER, POMARINE 121
 KITE, SNAIL 118
 KITTIWAKE, BLACK-LEGGED 122
Larus
 fuscus 122
 marinus 122
Laterallus jamaicensis 120
Melanitta
 fusca 118
 nigra 118
 MERLIN 120
Molothrus bonariensis 128
 MONK PARAKEET 125
 MURRELET, LONG-BILLED 124
 MYNA, COMMON 126
Myiopsitta monachus 125
 NIGHTHAWK, LESSER 125
Oceanites oceanicus 115
Oceanodroma leucorhoa 116
Oporornis agilis 127
 ORIOLE, SPOT-BREASTED 128
 OWL, SHORT-EARED 125
 PETREL, STORM-, *see* STORM-PETREL
Phaethon
 aethereus 116
 lepturus 118
 PHALAROPE, RED-NECKED 121
Phalaropus lobatus 121
Pheucticus ludovicianus 128
 PIGEON, WHITE-CROWNED 124
Piranga olivacea 128
 PLOVER
 SNOWY 120
 BLACK-BELLIED 120
Pluvialis squatarola 120
Porphyrio porphyrio 120
Puffinus
 gravis 115
 griseus 115
 puffinus 115
 PURPLE SWAMPHEN 120
 RAIL, BLACK 120
Rissa tridactyla 122
Rostrhamus sociabilis 118
 SANDPIPER, PURPLE 120
 SCOTER
 BLACK 118
 WHITE-WINGED 118
Seiurus motacilla 128
 SHEARWATER
 CORY'S 115
 GREATER 115
 MANX 115
 SOOTY 115
 SPARROW, GRASSHOPPER 128
 STORM-PETREL
 LEACH'S 116
 WILSON'S 115
Stercorarius pomarinus 121

Sterna:

anaethetus recognita 123

dougallii dougallii 122

Streptopelia decaocto 124

Streptoprocne zonaris pallidifrons 125

Sula leucogaster 118

SWIFT, WHITE-COLLARED 125

TANAGER, SCARLET 128

TERN:

BRIDLED 123

ROSEATE 122

TROPICBIRD

RED-BILLED 116

TROPICBIRD (cont.):

WHITE-TAILED 118

Vermivora ruficapilla ruficapilla 127

WARBLER:

BAY-BREASTED 127

BLACK-THROATED GREEN 127

CONNECTICUT 127

MAGNOLIA 127

NASHVILLE 127

WATERTHRUSH, LOUISIANA 128

WAXWING, CEDAR 126

Zenaida asiatica 125

NOW AT A SPECIAL PRICE

Carter R. Gilbert's definitive

**TYPE CATALOGUE OF RECENT AND FOSSIL
NORTH AMERICAN FRESHWATER FISHES:
Families Cyprinidae, Catostomidae, Ictaluridae,
Centrarchidae, and Ellassomatidae**

Florida Museum of Natural History

Special Publication #1

8° x 11", 284 pages, 28pp of references

originally published at \$40

Now \$30 plus \$2 s/h

(This price applies to US and Canada;
other countries s/h \$5 surface, \$10 first class.)

Florida residents, please add \$1.80 state tax for a total of \$33.80.)

all payments in US funds, check or major credit card

Order from FLMNH Bulletin, University of Florida
PO Box 117800, Gainesville, FL 32611 USA
or e-mail: mjoyner@ufl.edu

The BULLETIN OF THE FLORIDA MUSEUM OF NATURAL HISTORY publishes original biological research. Manuscripts dealing with natural history or systematic problems involving the southeastern United States or the neotropics are especially welcome. Submitted papers should be of medium length, ca. 10,000-60,000 words. Authors should include the names of three suggested reviewers. The BULLETIN receives manuscripts in confidence and protects the confidentiality of the content.

The BULLETIN is distributed worldwide through institutional exchanges and standing orders. Fifty free copies are sent to the first author who may order additional reprints at cost (see below).

PREPARATION OF MANUSCRIPT

Format—The BULLETIN encourages the following format. Contributors also should consult recent numbers of the BULLETIN for style and format, as well as the book *Scientific Style and Format, CBE Style Manual for Authors, Editors, and Publishers*, 6th Edition, 1994 (published by the Council of Biology Editors). Authors should submit three hard copies of the manuscript with complete tables, table legends, figures (one set original, two photocopies), and figure legends, plus a floppy disc or CD compatible with Word for Windows. Manuscripts must be typed, one side only, on 8-1/2 x 11" (A4) white bond paper, and double-spaced throughout. All pages must be numbered consecutively, including references, figure legends, footnotes, and tables. All margins should be at least 1 inch (25 mm) wide, and not justified on the right margin. Manuscripts not submitted in the format will be returned to the authors.

In most cases the parts of the manuscript should be as follows.

a. Title page—A separate sheet with the title, name(s) and address(es) of author(s), and a suggested running title.

b. Abstract—A separate sheet with 200 words or less summarizing the paper, and listing **five boldfaced key words**.

c. Conventions—Introduction, material and methods, results, discussion, and acknowledgments. Taxonomic reviews: the first mention in the text of a binomial species name should include the taxonomic authority and the year of publication [e.g., *Notogillia wetherbyi* (Dall, 1865)]. Thereafter the full generic name and species epithet must be written out each time the name first appears in a paragraph. The generic name may be abbreviated in the remainder of that paragraph as follows: *N. wetherbyi*. The reference need not be cited when author and date are given only as authority for a taxonomic name. Use italics for species names and metric units for measurements. A figure is cited in the text as "Fig." (e.g., Fig. 3). Authors should cite figures and tables in the text.

d. Literature cited—References in the text should give the name of the author(s) followed by the date of publication: for one author (Smith, 1999), for two authors (Schultz and Whitacre, 1999), and for more than two (Britt *et al.*, 1983). Only papers cited in the text may be included. All authors' last names are given in full. Initials are used for first and middle names. Each citation must be complete, with all journal titles *unabbreviated*, and in the following forms:

Periodicals:

Eisenberg, J. F. and J. R. Polisar. 1999. The mammal species of north-central Venezuela. *Bulletin of the Florida Museum of Natural History*, 42 (3):115-160.

Books:

Lundell, C. L. 1937. *The Vegetation of Petén*. Carnegie Institute of Washington, Publication 478. Washington, D.C.

Composite Works:

Gardner, A. L. 1993. Didelphimorpha. Pp. 15-24 in D. Wilson and D. M. Reeder, eds. *Mammal Species of the World*. Washington, D.C.: Smithsonian Institution Press, 1206 pp.

e. Legends—Legends should be typed on a separate sheet for each table and each set of figures. Abbreviations used in the figures should be included in the figure legends.

f. Tables—Each table should be on a separate sheet. Tables must be numbered with Arabic numerals. Each table should be headed by a brief legend. Avoid vertical rules.

g. Figures—All illustrations are referred to as figures. Authors should submit one set of original figures consecutively numbered with Arabic numerals. Clear photocopies are suitable for reviewer's copies of submitted manuscript. All figures must be ready for publication and comply with the following standards:

Photographs and halftone reproductions must be on glossy high-contrast paper, grouped as appropriate, and in focus with good contrast. Any not meeting these criteria will be returned or be reshot for higher contrast at author expense. A scale bar may be used in the photograph; otherwise, the figure legend should give the size. If the background of photographs (especially those of specimens) is not desired, amberlith or other means may be used to mask the background.

Text figures should be printed or drawn in black and completely lettered. Drawings (unless computer generated) should be made with dense black waterproof ink on quality paper or illustration board. All lettering must be sans serif in medium weight (bold for small type that prints white on black), using cutout, dry transfer, or lettering guide letters. Lettering must be not less than 2 mm high or greater than 5 mm high after reduction for publication.

Maximum size for figures is 9x14" (23 x 36 cm). Figures should be approximately typepage width (6-1/2"; 16.5 cm) or column width (3-1/8"; 8 cm), and should comply with page format. Figures should be labeled on the back to indicate the top of the figure and to identify author's name, manuscript title, and figure number.

Proofs—Page proofs will be sent to the first author to check for printer's errors and returned to the Editor promptly.

Page charges—Publication necessitates page charges to the first author, which are determined after consultation with the first author upon final acceptance of the manuscript. The first author is responsible for any charges incurred for alterations made by him on galley or page proofs, other than corrected printer's errors. The MUSEUM will send an invoice to the first author for all charges upon completion of publication. Color illustrations will be published at extra cost to the author(s).

Reprints—Order forms are sent to the first author with the page proofs. The first author is responsible for placing all orders.