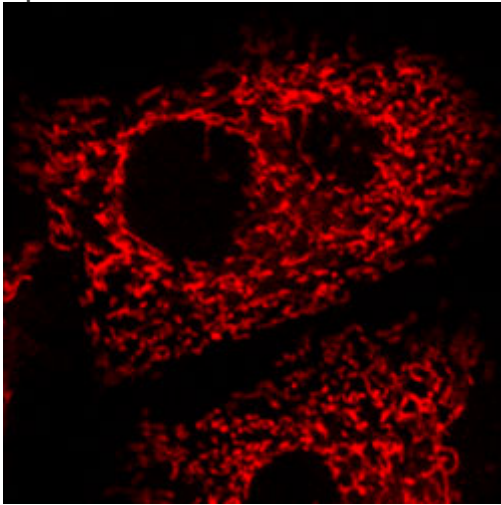


## MitoTracker Red CMXRos

Optimised for live HeLa cells grown in DMEM/5% FCS on WPI Fluorodishes.



Catalogue number: **M7512** (Invitrogen – Molecular Probes)

- Diffuses across cell membrane and accumulates in mitochondria
- Fixable with aldehyde-based fixative

(Labeling takes approximately 25 minutes)

### Preparation of stock solution (1mM)

- i. Warm vial to Room Temperature before opening vial.
- ii. Prepare stock solution in anhydrous DMSO.
- iii. Aliquot and store frozen, protected from light.

### Preparation of working solution (200nM)

- i. Dilute stock solution in DMEM + 5% FCS, (1ul stock solution + 4999.5ul DMEM/5% FCS) in a centrifuge tube.
- ii. Wrap in aluminium foil to protect from light.
- iii. Warm to 37 degrees Celsius in waterbath.

### Labelling protocol

- i. Remove medium from cells in Petri dish using a plastic transfer pipette.
- ii. Add pre-warmed working solution.
- iii. Incubate in tissue culture incubator at 37 degrees/5% CO<sub>2</sub> for 15 minutes.
- iv. Remove labelling solution.
- v. Add fresh pre-warmed medium.
- vi. Image as soon as possible