

**The original documents are located in Box 39, folder “Governors - Biographical Sketches and Portraits (1975)” of the Betty Ford White House Papers, 1973-1977 at the Gerald R. Ford Presidential Library.**

### **Copyright Notice**

The copyright law of the United States (Title 17, United States Code) governs the making of photocopies or other reproductions of copyrighted material. Betty Ford donated to the United States of America her copyrights in all of her unpublished writings in National Archives collections. Works prepared by U.S. Government employees as part of their official duties are in the public domain. The copyrights to materials written by other individuals or organizations are presumed to remain with them. If you think any of the information displayed in the PDF is subject to a valid copyright claim, please contact the Gerald R. Ford Presidential Library.

*Partial and Preliminary*  
*February 1975*

**GOVERNORS**

*of the*

**AMERICAN STATES,  
COMMONWEALTHS AND  
TERRITORIES**

1975

---

*Biographical Sketches and Portraits*

---



**NATIONAL GOVERNORS' CONFERENCE  
ANNUAL MEETINGS**

1st	Washington, D.C.	May 13-15	1908
2nd	Washington, D.C.	January 18-20	1910
3rd	Frankfort and Louisville, Kentucky	Nov. 29-Dec. 1	1910
4th	Spring Lake, New Jersey	September 12-16	1911
5th	Richmond, Virginia	December 3-7	1912
6th	Colorado Springs, Colorado	August 26-29	1913
7th	Madison, Wisconsin	November 10-13	1914
8th	Boston, Massachusetts	August 24-27	1915
9th	Washington, D.C.	December 14-16	1916
		No Meeting	1917
10th	Annapolis, Maryland	December 16-18	1918
11th	Salt Lake City, Utah	August 18-21	1919
12th	Harrisburg, Pennsylvania	December 1-3	1920
13th	Charleston, South Carolina	December 5-7	1921
14th	White Sulphur Springs, West Virginia	December 14-16	1922
15th	West Baden, Indiana	October 17-19	1923
16th	Jacksonville, Florida	November 17-18	1924
17th	Poland Springs, Maine	June 29-July 1	1925
18th	Cheyenne, Wyoming	July 26-29	1926
19th	Mackinac Island, Michigan	July 25-27	1927
20th	New Orleans, Louisiana	November 20-22	1928
21st	New London, Connecticut	July 16-18	1929
22nd	Salt Lake City, Utah	June 30-July 2	1930
23rd	French Lick, Indiana	June 1-2	1931
24th	Richmond, Virginia	April 25-27	1932
25th	Sacramento and San Francisco, Calif.	July 24-26	1933
26th	Mackinac Island, Michigan	July 26-27	1934
27th	Biloxi, Mississippi	June 13-15	1935
28th	St. Louis, Missouri	November 16-18	1936
29th	Atlantic City, New Jersey	September 14-16	1937
30th	Oklahoma City, Oklahoma	September 26-28	1938
31st	Albany and New York, New York	June 26-29	1939
32nd	Duluth, Minnesota	June 2-5	1940
33rd	Boston and Cambridge, Massachusetts	June 29-July 2	1941
34th	Asheville, North Carolina	June 21-24	1942
35th	Columbus, Ohio	June 20-23	1943
36th	Hershey, Pennsylvania	May 28-31	1944
37th	Mackinac Island, Michigan	July 1-4	1945
38th	Oklahoma City, Oklahoma	May 26-29	1946
39th	Salt Lake City, Utah	July 13-16	1947
40th	Portsmouth, New Hampshire	June 13-16	1948
41st	Colorado Springs, Colorado	June 19-22	1949
42nd	White Sulphur Springs, West Virginia	June 18-21	1950
43rd	Gatlinburg, Tennessee	Sept. 30-Oct. 3	1951
44th	Houston, Texas	June 29-July 2	1952
45th	Seattle, Washington	August 2-6	1953
46th	Lake George, New York	July 11-14	1954
47th	Chicago, Illinois	August 9-12	1955
48th	Atlantic City, New Jersey	June 24-27	1956
49th	Williamsburg, Virginia	June 23-26	1957
50th	Bal Harbour, Florida	May 18-21	1958
51st	San Juan, Puerto Rico	August 2-5	1959
52nd	Glacier National Park, Montana	June 26-29	1960
53rd	Honoŕulu, Hawaii	June 25-28	1961
54th	Hershey, Pennsylvania	July 1-4	1962
55th	Miami Beach, Florida	July 21-24	1963
56th	Cleveland, Ohio	June 6-10	1964
57th	Minneapolis, Minnesota	July 25-29	1965
58th	Los Angeles, California	July 4-7	1966
59th	S.S. Independence and Virgin Islands	October 16-24	1967
60th	Cincinnati, Ohio	July 20-24	1968
61st	Colorado Springs, Colorado	Aug. 31-Sept. 3	1969
62nd	Lake of the Ozarks, Missouri	August 9-12	1970
63rd	San Juan, Puerto Rico	September 12-15	1971
64th	Houston, Texas	June 4-7	1972
65th	Lake Tahoe, Nevada	June 3-6	1973
66th	Seattle, Washington	June 2-5	1974
67th	New Orleans, Louisiana	June 8-11	1975

ALABAMA



GEORGE C. WALLACE



*Inaugurated January, 1963  
 Term expired January, 1967  
 Inaugurated January, 1971  
 Re-elected November, 1974  
 Term will expire January, 1979*

GEORGE C. WALLACE, born in Clio, Alabama, August 23, 1919. Attended University of Alabama. Married; three sons, three daughters. Attorney. Served in the United States Army Air Force, 1942-45. Public offices include: Assistant Attorney General of Alabama, 1945-46; member, Alabama House of Representatives, 1947-52; elected Third Judicial Circuit Judge, 1952; Governor of Alabama, 1963-67, and since January, 1971. Member, American Legion, Veterans of Foreign Wars, Eastern Star, Disabled American Veterans, Shrine, Woodmen, Masons, Moose, Elks, Civitan, Alabama Council for Better Schools, and Alabama Congress of Parents and Teachers. Member, Board of Directors, Alabama Tuberculosis Association; Board of Directors, Alabama Pension Institute, Inc. Chairman, Southern Governors' Conference, 1972-73. Methodist. Democrat.

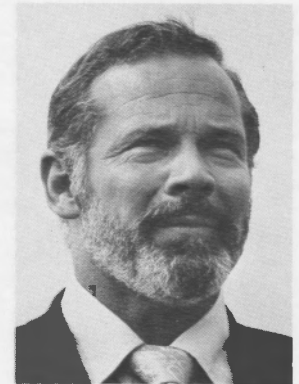


CORNELIA WALLACE

ALASKA

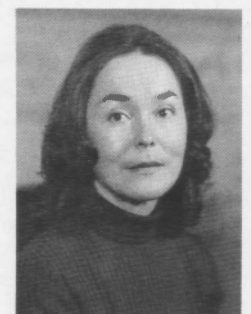


*Inaugurated December, 1974  
 Term will expire December, 1978*



JAY S. HAMMOND

JAY S. HAMMOND, born in Troy, New York, July 21, 1922. B.S., University of Alaska, 1948. Married; two daughters. Businessman. Served as fighter pilot in U.S. Marine Corps during World War II. Public offices include: Member, State House of Representatives, 1959-65; Manager, Bristol Bay Borough, 1965-67; Member, State Senate, 1967-72; Mayor, Bristol Bay Borough, 1972-74; Governor of Alaska since December, 1974. Member of Alaska Humanities Forum; International North Pacific Fisheries Convention Advisory Committee; Joint Federal-State Land Use Planning Advisory Committee; Alaska Airmen's Association, Inc.; Veterans of Foreign Wars; and National Rifle Association. Protestant. Republican.



BELLA HAMMOND



## AMERICAN SAMOA



EARL B. RUTH



*Inaugurated February, 1975  
Term indefinite*

EARL B. RUTH, born in Spencer, North Carolina, February 7, 1916. A.B., University of North Carolina, 1938; M.A., 1942; Ph.D., 1955. Married; one son, three daughters. Educator. Served as lieutenant in U.S. Navy, 1942-45. Public offices include: Member, Salisbury City Council; Mayor Pro Tem, 1967-68; Member, U.S. House of Representatives, 1969-75; Governor of American Samoa since February, 1975. Past board member, YMCA; Past President, National Sportscasters and Sportswriters Awards Program; Member, American Legion, Civitan, and Elks. Presbyterian. Republican.

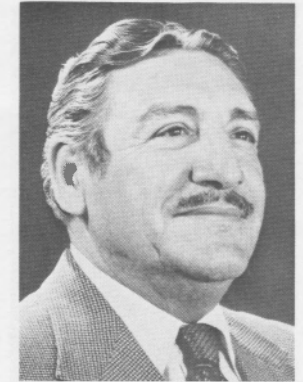


JANE RUTH

## ARIZONA



*Inaugurated January, 1975  
Term will expire January, 1979*



RAUL H. CASTRO

RAUL H. CASTRO, born in Cananea, Mexico, June 12, 1916. B.A., Northern Arizona University, 1939; J.D., University of Arizona, 1949; honorary doctorates from Arizona State University and Northern Arizona University. Married; two daughters. Attorney. Public offices include: Pima County Attorney, 1955-59; Judge, Pima County Superior Court, 1959-64; American Ambassador to El Salvador, 1964-68; American Ambassador to Bolivia, 1968-69; Governor of Arizona since January, 1975. Past President, Pima County Tuberculosis Association, Pima County Legal Aid Society, Pima Section — International Rights Association. Past member, Board of Directors, Tucson Art Center and Museum, Red Cross of America — Tucson Chapter, Tucson YMCA. Past member, Governor's Committee on Correction and Penology, Mexican-American Commercial Relations Committee, Tucson Chamber of Commerce. Past Chairman, Pima County United Way. Member, Board of Directors, Legal Aid Society, Pio Decimo Center, United Community Campaign, Development Authority of Tucson's Economy. Member, National Board of Directors, Boy Scouts of America and Humane Society of America. Catholic. Democrat.

PATRICIA CASTRO

Photograph  
not  
available  
as of  
publication  
date.

## ARKANSAS



DAVID H. PRYOR



*Inaugurated January, 1975  
Term will expire January, 1977*

DAVID HAMPTON PRYOR, born in Camden, Arkansas, August 29, 1934. B.A., University of Arkansas, 1957; LL.B., 1964. Married; 3 sons. Attorney. Public offices include: Member, State House of Representatives, 1961-66; U.S. House of Representatives, 1967-72; Governor of Arkansas since January, 1975. Chairman, Arkansas Cancer Crusade, 1973; Campaign Chairman, Central Arkansas Chapter, March of Dimes, 1974. Past Director, Camden Chamber of Commerce; past member, Camden Rotary Club and Jaycees. Board member, Presbyterian Family and Child Services, Little Rock. Member of Arkansas and American Bar Associations; Little Rock Chamber of Commerce; Pulaski County Health and Welfare Council. Recipient of National Council of Senior Citizens "Man of the Year" award, 1971. Presbyterian. Democrat.



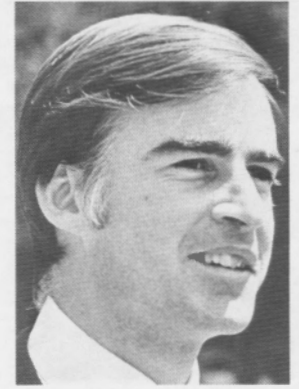
BARBARA PRYOR

## CALIFORNIA



*Inaugurated January, 1975  
Term will expire January, 1979*

EDMUND G. BROWN, JR., born in San Francisco, California, April 7, 1938. B.A., University of California, 1961; LL.B., Yale University, 1964. Attorney. Public offices include: Los Angeles Community College Board of Trustees, 1969; Secretary of State, 1970-74; Governor of California since January, 1975. Catholic. Democrat.



EDMUND G. BROWN, JR.

## COLORADO



RICHARD D. LAMM



*Inaugurated January, 1975  
Term will expire January, 1979*

RICHARD D. LAMM, born in Madison, Wisconsin, August 3, 1935. B.B.A., University of Wisconsin, 1957; LL.B., University of California, 1961. Married; one son, one daughter. Attorney. First Lieutenant in U.S. Army, 1957-58. Public offices include: President, Denver Young Democrats, 1963; Vice President, Colorado Young Democrats, 1964; Member, Colorado House of Representatives, 1966-74; Governor of Colorado since January, 1975. Unitarian. Democrat.



DOROTHY LAMM

## CONNECTICUT



*Inaugurated January, 1975  
Term will expire January, 1979*

ELLA T. GRASSO, born in Windsor Locks, Connecticut, May 10, 1919. B.A., Mt. Holyoke College, 1940; M.A., 1942; honorary doctorates from Sacred Heart University and Mt. Holyoke College. Married; one son, one daughter. Public official. Public offices include: Assistant Director of Research, War Manpower Commission, Connecticut, 1942-45; Member, State House of Representatives, 1953-59; Secretary of State, 1959-70; U.S. House of Representatives, 1970-74; Member, National Democratic Platform Committee, 1960; Delegate, Connecticut Constitutional Convention, 1965; Chairman, Democratic State Platform Committee, 1956-68; Governor of Connecticut since January, 1975. Catholic. Democrat.



ELLA T. GRASSO

DR. THOMAS GRASSO

Photograph  
not  
available  
as of  
publication  
date.



## DELAWARE



SHERMAN W. TRIBBITT



*Inaugurated January, 1973  
Term will expire January, 1977*

SHERMAN W. TRIBBITT, born in Denton, Maryland, November 9, 1922. Graduate of Beacom College, Wilmington, Delaware. Married; two sons, one daughter. Business executive. Served three years in United States Navy during World War II. Public offices include: Member, State House of Representatives, 1957-65 and 1971-73; Speaker, 1959-65; Minority Leader, 1971-73; Lieutenant Governor of Delaware, 1965-69; Governor of Delaware since January, 1973. Member of Masons, Moose, American Legion, and Veterans of Foreign Wars. Methodist. Democrat.



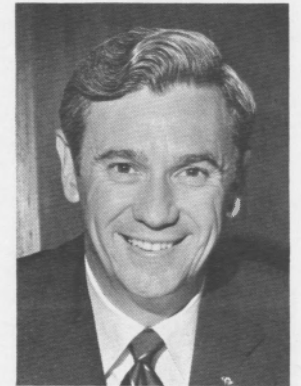
JEANNE TRIBBITT

## FLORIDA



*Inaugurated January, 1971  
Re-elected November, 1974  
Term will expire January, 1979*

REUBIN O'D. ASKEW, born in Muskogee, Oklahoma, September 11, 1928. B.S., Florida State University, 1951; LL.B., University of Florida, 1956. Married; one son, one daughter. Attorney. United States Army Paratrooper, 1946-47; Air Force Officer, 1951-53. Public offices include: Assistant Escambia County Solicitor, Florida, 1956-58; Member, State House of Representatives, 1958-62, State Senate, 1962-70 (President Pro Tempore, 1968-70); Governor of Florida since January, 1971. Member of First Judicial Circuit, Florida, and American Bar Associations; Masons; Shrine; Rotary; American Legion; Officer and member of Children's Home Society, Florida Association for Retarded Children, Pensacola Oratorio Society, Florida Tuberculosis and Health Association, Pensacola YMCA, United Fund and Heart Association. Chairman, Education Commission of the States, 1973-74. Vice Chairman, Southern Governors' Conference, 1973-74; Chairman, 1974-75. Presbyterian. Democrat.



REUBIN O'D. ASKEW



DONNA LOU ASKEW

## GEORGIA



GEORGE D. BUSBEE



*Inaugurated January, 1975  
Term will expire January, 1979*

GEORGE DEKLE BUSBEE, born in Vienna, Georgia, August 7, 1927. B.A., University of Georgia, 1949; LL.B., 1952. Married; two sons, two daughters. Attorney. Served in the U.S. Navy. Public offices include: Member, State House of Representatives, 1956-74; Majority Leader, 1967-74; Governor of Georgia since January, 1975. Past President, Albany Jaycees and PTA. Baptist. Democrat.



MARY ELIZABETH BUSBEE

## GUAM



*Inaugurated January, 1975  
Term will expire January, 1979*

RICARDO JEROME BORDALLO, born in Agana, Guam, December 11, 1927. Attended University of San Francisco, 1947-50. Married; one daughter. Businessman. Public offices include: Member, Guam Legislature, 1956-70; Chairman, Democratic Party of Guam, 1960-63, 1971-73; Governor of Guam since January, 1975. President, Marianas Lions Club, 1956-57. Past member, Marianas Lions Club, Guam Tourist Commission, Spanish Club of Guam, Guam Chamber of Commerce, SKOL Club, Air Force Association of Guam. Past member, Board of Directors, Marianas Association for Retarded Children; Young Men's League of Guam; Navy League of Guam; American Red Cross, Vice Chairman, 1966; Committee, American Red Cross Fund Drive, TB Drive. Catholic. Democrat.



RICARDO J. BORDALLO



MADELEINE BORDALLO



## HAWAII



GEORGE R. ARIYOSHI



*Inaugurated December, 1974  
Term will expire December, 1978*

GEORGE RYOICHI ARIYOSHI, born in Honolulu, Hawaii, March 12, 1926. B.A., Michigan State University, 1949; J.D., University of Michigan Law School, 1952. Married; two sons, one daughter. Attorney and businessman. U.S. Army Military Intelligence Service, 1945-46. Public offices include: Member, Territory of Hawaii House of Representatives, 1954-58; Territory of Hawaii Senate, 1958; State Senate, 1959-70; Senate Majority Leader, 1965-66; Senate Majority Floor Leader, 1969-70; Lieutenant Governor of Hawaii, 1970-73; Acting Governor, 1973-74. Governor of Hawaii since December, 1974. Member, YMCA Board of Managers, 1955-57; American Bar Association House of Delegates, 1969. Past President, Hawaii Bar Association, Hawaii Bar Foundation, Military Intelligence Service Veterans Club. Democrat.



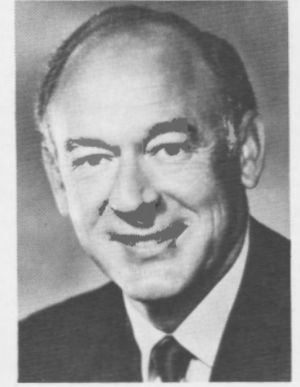
JEAN ARIYOSHI

## IDAHO



*Inaugurated January, 1971  
Re-elected November, 1974  
Term will expire January, 1979*

CECIL D. ANDRUS, born in Hood River, Oregon, August 25, 1931. Attended Oregon State University. Married; three daughters. Businessman. Served with United States Navy, 1951-55; Korean War veteran. Public offices include: Member, Idaho Senate, 1961-67 and 1969-71; Governor of Idaho since January, 1971. Former Director, Idaho Mental Health Association, and Associated Taxpayers of Idaho. Advisory Council member, Idaho Mental Retardation Task Force. Member, B.P.O.E. Lodge and American Legion; former Post Commander, VFW Member, National Governors' Conference Executive Committee, 1971-72; Chairman, Committee on Human Resources, 1974. Lutheran. Democrat.

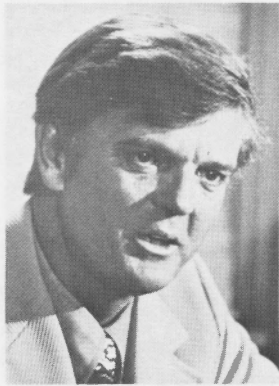


CECIL D. ANDRUS



CAROL ANDRUS

## ILLINOIS



DAN WALKER



*Inaugurated January, 1973  
Term will expire January, 1977*

DAN WALKER, born in Washington, D. C., August 6, 1922. Graduate, United States Naval Academy, 1945; Northwestern University Law School, 1950; (hon.) Carroll College, 1969. Married; three sons, four daughters. Attorney and business executive. Active duty in United States Navy, 1940-41, 1945-47, and 1951; Deputy Chief Commissioner, United States Court of Military Appeals, 1951-52. Public offices include: Administrative Aide to Governor Adlai E. Stevenson, 1952; Secretary, Illinois Public Aid Commission, 1962, Acting Chairman, 1964; Governor of Illinois since January, 1973. President, Democratic Federation of Illinois, 1958-59; Director, National Commission on the Causes and Prevention of Violence, 1968; President, Chicago Crime Commission, 1968-69; President, Metropolitan Housing Development Corporation, 1968-69. Member of Chicago, Illinois and American Bar Associations; American Society of International Law; Economic Club of Chicago; American Civil Liberties Union. Methodist. Democrat.



ROBERTA WALKER

## INDIANA



*Inaugurated January, 1973  
Term will expire January, 1977*

OTIS R. BOWEN, born near Rochester, Indiana, February 26, 1918. B.A. (1939) and M.D. (1942), Indiana University. Married; three sons, one daughter. Physician. Served as Captain in U.S. Army Medical Corps during World War II. Public offices include: County Coroner, 1952-56; Member, State House of Representatives, 1957-58 and 1961-73; Speaker, 1967-73; Chairman, Legislative Council, 1970 and 1972; Governor of Indiana since January, 1973. Recipient in 1971 of Indiana Public Health Association Merit Award and Indiana University School of Medicine Alumnus of the Year Award. Member of Indiana and American Medical Associations; Indiana University Medical Alumni Council; Kiwanis Club; Chamber of Commerce; Alpha Omega Alpha; Phi Beta Pi; Delta Chi. Lutheran. Republican.

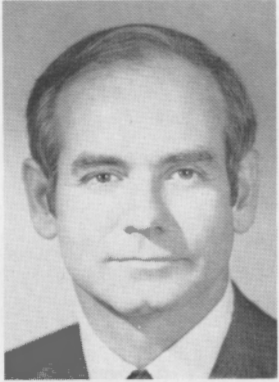


OTIS R. BOWEN



ELIZABETH BOWEN  
"Beth"

## IOWA

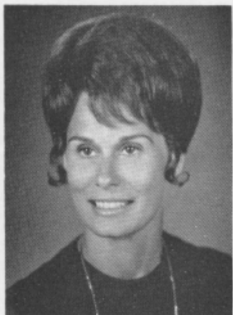


ROBERT D. RAY



*Inaugurated January, 1969  
Re-elected November, 1970, 1972, 1974  
Term will expire January, 1979*

ROBERT D. RAY, born in Des Moines, Iowa, September 26, 1928. Graduate of Drake University Law School; recipient of numerous honorary degrees. Married; three daughters. Attorney. Served in 1st Cavalry of U.S. Army. Public offices include: Republican State Chairman, 1963-67; Governor of Iowa since January, 1969. President, Alpha Kappa Psi, Omicron Delta Kappa; Member, Alpha Zeta; Former Chairman, March of Dimes of Iowa; Member, Polk County and American Bar Associations; Member, American Trial Lawyers and Iowa Academy of Trial Lawyers; Member, Advisory Commission on Intergovernmental Relations. Honorary Advisor, National Boy Scout Council. Recipient, National Distinguished Service Award, Future Farmers of America; Distinguished Alumnus Award, Drake University; Order of the Coif, Drake University Law School. Member, National Governors' Conference Executive Committee, 1970-71, 1974-75. Vice Chairman, Midwestern Governors' Conference, 1971-72; Chairman, 1972-73. Disciples of Christ. Republican.



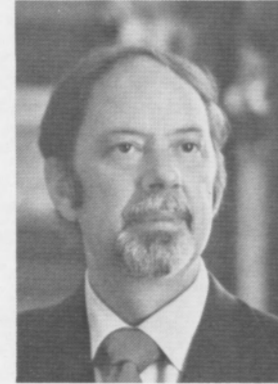
BILLIE LEE RAY  
"Billie"

## KANSAS



*Inaugurated January, 1975  
Term will expire January, 1979*

ROBERT F. BENNETT, born in Johnson County, Kansas, May 23, 1927. A.B., University of Kansas, 1950; LL.B., 1952. Married; one son, three daughters. Attorney. U.S. Marine Corps, World War II and Korean War. Public offices include: Prairie Village City Council, 1955-57; Mayor, City of Prairie Village, 1957-65; State Senator, 1965-74; President of Senate, 1973-74; Governor of Kansas since January, 1975. Past President, Kansas League of Municipalities; former Secretary-Treasurer, Executive Council of Kansas Bar Association. Member of Kansas, Missouri, and American Bar Associations; Old Mission Lodge, AF&AM. Presbyterian. Republican.



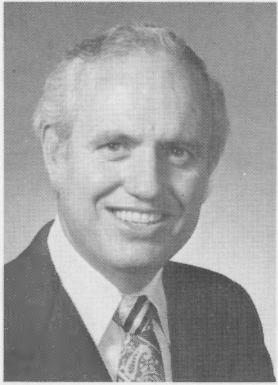
ROBERT F. BENNETT

OLIVIA BENNETT

Photograph  
not  
available  
as of  
publication  
date.



## KENTUCKY



JULIAN M. CARROLL



*Succeeded to office December, 1974  
Term will expire December, 1975*

JULIAN MORTON CARROLL, born in West Paducah, Kentucky, April 16, 1931. B.S., University of Kentucky, 1954; LL.B., 1956; honorary doctorates, Eastern Kentucky University and Morehead State University. Married; two sons, one daughter. Attorney. Served in U.S. Air Force, 1956-59; Captain, Air Force Reserve. Public offices include: Member, State House of Representatives, 1962-71; Speaker of the House, 1968-71; Lieutenant Governor, 1971-74; Chairman, Legislative Research Commission, 1971-74; Vice Chairman, Kentucky Turnpike Authority, and State Property and Buildings Commission. Succeeded to office of Governor in December, 1974, to fill vacancy created by resignation of Governor Wendell H. Ford. Charter President and member, Paducah Optimist Club. Member of Lions Club; Hiram Lodge #4, F&M; York Rite Mason; Rizpah Shrine Temple. Former Director, Paducah Junior Chamber of Commerce. Member of McCracken County, Kentucky, and American Bar Associations. Presbyterian. Democrat.



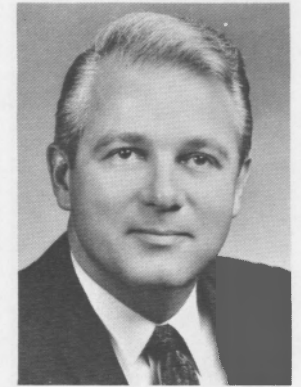
CHARLANN CARROLL

## LOUISIANA



*Inaugurated May, 1972  
Term will expire May, 1976*

EDWIN W. EDWARDS, born in Marksville, Louisiana, August 7, 1927. LL.B., Louisiana State University, 1949; LL.D., 1968. Married; two sons, two daughters. Attorney. U.S. Navy, World War II. Public offices include: Crowley City Council, 1954-62; Member of Louisiana Senate, 1964-65; Member of United States House of Representatives, 1965-72 (served on Public Works Committee, Judiciary Committee and Committee on Internal Security); Governor of Louisiana since May, 1972. Member of Crowley Lions Club, Greater Crowley Chamber of Commerce, American Legion, Civil Air Patrol. Catholic. Democrat.



EDWIN W. EDWARDS



ELAINE EDWARDS

## MAINE



JAMES B. LONGLEY



*Inaugurated January, 1975  
Term will expire January, 1979*

JAMES B. LONGLEY, born in Lewiston, Maine, April 22, 1924. B.A., Bowdoin College, 1947; C.L.U., American College of Life Underwriters, 1954; LL.B., University of Maine Law School, 1957. Married; two sons, three daughters. Attorney and Businessman. Served in U.S. Air Force during World War II. Public offices include: Former Chairman, Maine Management and Cost Survey Study of State Government; Governor of Maine since January, 1975. Past President, Million Dollar Round Table; State of Maine Chapter, CLU; Androscoggin Valley Life Underwriters Association. Past Chairman, Board of Editors of *Query*; Past Director, Healey Home for Boys. Director, Child and Family Services of Maine; Member, Board of Trustees, Central Maine General Hospital; Member of Androscoggin County, Maine, and American Bar Associations. Independent.

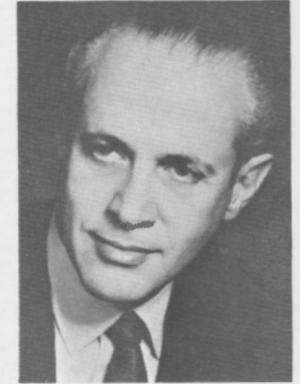
Photograph  
not  
available  
as of  
publication  
date.

HELEN LONGLEY

## MARYLAND



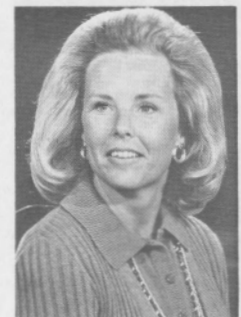
*Elected by General Assembly January, 1969  
Elected November, 1970, 1974  
Term will expire January, 1979*



MARVIN MANDEL

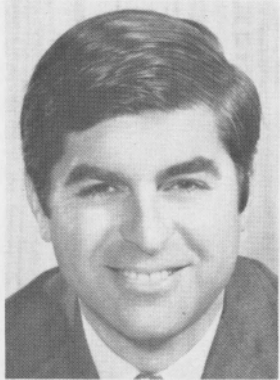
MARVIN MANDEL, born in Baltimore, Maryland, April 19, 1920. LL.B., University of Maryland, 1942. Married. Attorney. Served in United States Army, 1942-44. Public offices include: Justice of the Peace, Baltimore, 1950; Member, Maryland House of Delegates, 1952-69; Speaker, 1964-69; elected to office of Governor by Maryland General Assembly, January, 1969, to fill vacancy created by resignation of Governor Spiro T. Agnew. Chairman, Democratic State Central Committee, 1968. Member, American Legion; Jewish War Veterans; Omicron Delta Kappa; American, Maryland and Baltimore Bar Associations. Former member of Executive Committee, National Conference of State Legislative Leaders. Chairman, Democratic Governors' Conference, 1971-72. Member, National Governors' Conference Executive Committee, 1970-71. Chairman, National Governors' Conference, 1972-73. Member of Chizuk Amuno Congregation. Democrat.

JEANNE MANDEL





## MASSACHUSETTS



MICHAEL S. DUKAKIS



*Inaugurated January, 1975  
Term will expire January, 1979*

MICHAEL S. DUKAKIS, born in Brookline, Massachusetts, November 3, 1933. Graduate of Swarthmore College and Harvard Law School. Married; one son, two daughters. Attorney. Served in U.S. Army, Korea. Public offices include: Member, State House of Representatives, 1962-70; Governor of Massachusetts since January, 1975. Vice Chairman, New England Governors' Conference, 1975. Greek Orthodox. Democrat.



KATHARINE DUKAKIS

## MICHIGAN



*Succeeded to office January, 1969  
Elected November, 1970, 1974  
Term will expire January, 1979*



WILLIAM G. MILLIKEN

WILLIAM G. MILLIKEN, born in Traverse City, Michigan, March 26, 1922. Graduate of Yale University; honorary Doctor of Laws degrees from University of Michigan, Central Michigan University, Detroit Institute of Technology and Eastern Michigan University. Married; one son, one daughter. President of J. W. Milliken, Inc., department stores. Combat flier with fifty missions in World War II; awarded Purple Heart, Air Medal with two Oak Leaf Clusters, European Ribbon with three battle stars. Public offices include: Member, Michigan Senate, 1960-64; Majority Floor Leader, 1963-64; Lieutenant Governor, 1965-68; succeeded to office of Governor, January, 1969, to fill vacancy created by resignation of Governor George Romney. Member of Board of Counselors, Smith College, Northampton, Massachusetts; former member, Michigan Waterways Commission. Chairman, Republican Governors' Association, 1972. Member, National Governors' Conference Executive Committee, 1973-74. Vice Chairman, Midwestern Governors' Conference, 1973-74; Chairman, 1974-75. Congregationalist. Republican.



HELEN MILLIKEN

## MINNESOTA



WENDELL R. ANDERSON



*Inaugurated January, 1971  
Re-elected November, 1974  
Term will expire January, 1979*

WENDELL R. ANDERSON, born in St. Paul, Minnesota, February 1, 1933. B.A. (1954) and LL.B. (1960), University of Minnesota. Married; one son, two daughters. Attorney. United States Army Infantry Officer, 1955-56. Public offices include: Member, State House of Representatives, 1959-63; State Senate, 1963-71; Governor of Minnesota since January, 1971. Member of Minnesota and Ramsey County Bar Associations; Sigma Alpha Epsilon; United States Olympic Hockey Team, 1956; past member, Board of Directors of St. Paul Sister City Association. Member, National Governors' Conference Executive Committee, 1971-72. Chairman, Democratic Governors' Conference, 1974-75. Protestant. Democrat.



MARY ANDERSON

## MISSISSIPPI



*Inaugurated January, 1972  
Term will expire January, 1976*

WILLIAM L. WALLER, born in Community of Burgess, Mississippi, October 21, 1926. B.S., Memphis State University; LL.B., University of Mississippi. Married; four sons, one daughter. Attorney. Served with Counterintelligence Corps, 1951. Public offices include: District Attorney, Hinds County, 1959-67; Governor of Mississippi since January, 1972. Past President, Mississippi Prosecutors Association. Member of American and Mississippi Bar Associations; American Trial Lawyers Association; Board of Directors, National District Attorneys' Association. Member, National Governors' Conference Executive Committee, 1974-75. Baptist. Democrat.

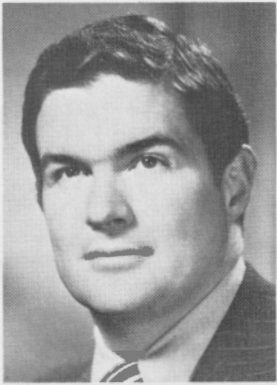


WILLIAM L. WALLER



CARROLL WALLER

## MISSOURI



CHRISTOPHER S. BOND



*Inaugurated January, 1973  
Term will expire January, 1977*

CHRISTOPHER S. BOND, born in St. Louis, Missouri, March 6, 1939. Graduate, Princeton University, 1960; University of Virginia Law School, 1963; honorary Doctor of Laws degrees from Westminster College and William Jewell College. Married. Attorney. Public offices include: Clerk, United States Court of Appeals for the Fifth Circuit, 1963-64; Assistant Attorney General of Missouri, 1969-70; State Auditor, 1971-73; Governor of Missouri since January, 1973. Recipient, Jaycees One of Ten Outstanding Young Men of America, 1974. Trustee, School of the Ozarks; past Director, Missouri Association for Social Welfare and Audrain County Cerebral Palsy School. Member of Jaycees, Optimists, Omicron Delta Kappa, Order of the Coif. Chairman, Republican Governors' Association, 1974-75. Member, National Governors' Conference Executive Committee, 1974-75. Presbyterian. Republican.



CAROLYN BOND

## MONTANA

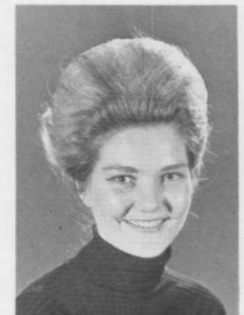


*Inaugurated January, 1973  
Term will expire January, 1977*

THOMAS L. JUDGE, born in Helena, Montana, October 12, 1934. Graduate of University of Notre Dame, 1957; Graduate School, University of Louisville, 1960; (hon.) University of Santa Clara, 1967. Married; two sons. Advertising executive. Served as Second Lieutenant in U.S. Army, 1958; Captain, U.S. Army Reserve. Public offices include: Member, State House of Representatives, 1961-67; Secretary, Legislative Council, 1965-67; Member, State Senate, 1967-69; Lieutenant Governor, 1969-73; Governor of Montana since January, 1973. Recipient of Helena Jaycees Distinguished Service Award, 1963; Montana's Notre Dame Man of the Year, 1966; Jaycees Outstanding Young Man of Montana, 1967; National VFW Award. Member of Eagles, Elks, Knights of Columbus. Member of Executive Committee, National Conference of Lieutenant Governors, 1970-71; Chairman, 1972. Catholic. Democrat.



THOMAS L. JUDGE



CAROL JUDGE



## NEBRASKA



J. JAMES EXON



*Inaugurated January, 1971  
Re-elected November, 1974  
Term will expire January, 1979*

J. JAMES EXON, born in Geddes, South Dakota, August 9, 1921. Attended University of Omaha. Married; one son, two daughters. Business executive. Served in United States Army Signal Corps, 1942-45; Army Reserve, 1945-49. Public offices include: Vice Chairman, Nebraska State Democratic Central Committee, 1964-68; Democratic National Committeeman, 1968-70; Governor of Nebraska since January, 1971. Attended 1964, 1968, and 1972 Democratic National Conventions and Chairman of Nebraska delegation to 1974 Mid-term Convention. Thirty-second Degree Mason; Shriner; Member of Eagles; Elks; American Legion; life member of Veterans of Foreign Wars; former Lieutenant Governor, District 10 Optimist International. Member, National Governors' Conference Executive Committee, 1971-72; Education Commission of the States, 1972-73; and present member of Executive Committee of Democratic Governors' Conference. Vice Chairman, Midwestern Governors' Conference, 1972-73; Chairman, 1973-74. Episcopalian. Democrat.



PATRICIA EXON  
"Pat"

## NEVADA



*Inaugurated January, 1971  
Re-elected November, 1974  
Term will expire January, 1979*

MIKE O'CALLAGHAN, born in LaCrosse, Wisconsin, September 10, 1929. B.S. and M.Ed., University of Idaho; also graduate studies at Colorado State, University of Nevada, Georgetown University and Claremont. Married; three sons, two daughters. Teacher and Public Administrator. Served with United States Marine Corps (1946-50), Air Force (1950-52), Army Infantry (1952-53); recipient of Purple Heart, Silver Star and Bronze Star. Public offices include: Chief Probation Officer and Director of Court Services; Clark County, Nevada, 1961-63; Nevada State Director of Health and Welfare, 1963-64; Project Management Director, Job Corps Conservation Centers, Washington, D.C., 1964-66; Regional Director, Office of Emergency Preparedness, San Francisco, 1967-69; Governor of Nevada since January, 1971. Member, Knights of Columbus, Lions International, and Veterans of Foreign Wars. Chairman, Western Governors' Conference, 1975. Catholic. Democrat.



MIKE O'CALLAGHAN



CAROLYN O'CALLAGHAN

## NEW HAMPSHIRE



MELDRIM THOMSON, JR.



*Inaugurated January, 1973  
Re-elected November, 1974  
Term will expire January, 1977*

MELDRIM THOMSON, JR., born in Pittsburgh, Pennsylvania, May 8, 1912. Attended Mercer University; LL.B., University of Georgia. Married; four sons, two daughters. Publisher. Public offices include: School Board Chairman; Member, Constitutional Convention; Governor of New Hampshire since January, 1973. Vice Chairman, New England Governors' Conference, 1974. Congregationalist. Republican.



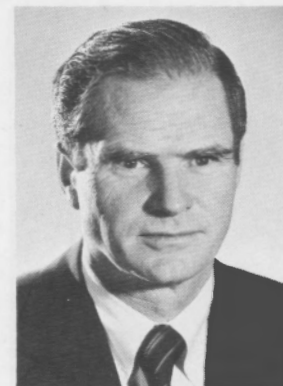
GALE THOMSON

## NEW JERSEY



*Inaugurated January, 1974  
Term will expire January, 1978*

BRENDAN T. BYRNE, born in West Orange, New Jersey, April 1, 1924. B.A., Princeton University; LL.B., Harvard University. Married; three sons, four daughters. Attorney. Served as Lieutenant in United States Air Force during World War II; recipient of Distinguished Flying Cross and Air Medals. Public offices include: Assistant Counsel, 1955, and Executive Secretary, 1956-58, to the Governor; Deputy Attorney General, 1958-59; County Prosecutor, 1959-68; President, State Board of Public Utilities Commissioners, 1968-70; Superior Court Judge, 1970-73; Governor of New Jersey since January, 1974. Past President, National District Attorneys Association; Trustee, Princeton University. Catholic. Democrat.



BRENDAN T. BYRNE



JEAN BYRNE



## NEW MEXICO



JERRY APODACA



*Inaugurated January, 1975  
Term will expire January, 1979*

JERRY APODACA, born in Las Cruces, New Mexico, October 3, 1934. B.S., University of New Mexico. Married; two sons, three daughters. Businessman. Marine Reserves, 1953-55. Public offices include: Member, State Senate, 1967-74; Governor of New Mexico since January, 1975. Member, Board of Directors, New Mexico Amigos. Catholic. Democrat.

Photograph  
not  
available  
as of  
publication  
date.

CLARA APODACA

## NEW YORK



HUGH L. CAREY



*Inaugurated January, 1975  
Term will expire January, 1979*

HUGH L. CAREY, born in Brooklyn, New York, April 11, 1919. J.S.D., St. John's Law School. Widower; 8 sons, 4 daughters. Attorney. Officer in U.S. Army during World War II; recipient of Bronze Star, Croix de Guerre with Silver Star, and Combat Infantry Award. Public offices include: Member, U.S. House of Representatives, 1961-75; Governor of New York since January, 1975. Member, Board of Directors, St. Vincent's Home for Boys, Boy Scouts Finance Campaign, Montauk and Cathedral Clubs of Brooklyn, Emerald Association; Member, Board of Trustees, Brooklyn Public Library; Member, Veterans of Foreign Wars; Phi Delta Phi. Catholic. Democrat.

## NORTH CAROLINA



JAMES E. HOLSHOUSER, JR.



*Inaugurated January, 1973  
Term will expire January, 1977*

JAMES E. HOLSHOUSER, JR., born in Boone, North Carolina, October 8, 1934. Graduate of Davidson College and University of North Carolina Law School. Married; one daughter. Attorney. Public offices include: Member, State House of Representatives, 1962-66, 1968-73; Governor of North Carolina since January, 1973. Member of American Revolution Bicentennial Commission, 1969; North Carolina Bar Association. National and state winner, Jaycees Freedom Guard Award, 1971. Member, National Governors' Conference Executive Committee, 1973-75. Chairman, Southern Regional Education Board, 1974-75. Presbyterian. Republican.



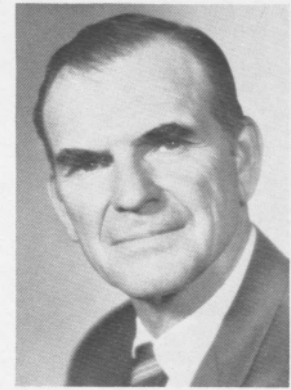
PATRICIA HOLSHOUSER

## NORTH DAKOTA



*Inaugurated January, 1973  
Term will expire January, 1977*

ARTHUR A. LINK, born in Alexander, North Dakota, May 24, 1914. Attended North Dakota Agricultural College. Married; five sons, one daughter. Farmer-Rancher. Public offices include: Member, Randolph Township and McKenzie County Welfare Boards; Member, State House of Representatives, 1947-71; Speaker, 1965; Chairman, State Advisory Council for Vocational Education, 1969-71; Member, United States House of Representatives, 1971-73; Governor of North Dakota since January, 1973. Member, North Dakota Nonpartisan League; Board member, Williston University Center Foundation; past board member, McKenzie County and Lewis and Clark Trail Museums. Past President, Alexander Trinity Lutheran Church Council and Alexander Lions Club. Lutheran. Democrat.



ARTHUR A. LINK



GRACE LINK

## OHIO



JAMES A. RHODES



*Inaugurated January, 1963  
Re-elected November, 1966  
Term expired January, 1971  
Inaugurated January, 1975  
Term will expire January, 1979*

JAMES ALLEN RHODES, born in Coalton, Ohio, September 13, 1909. Attended Ohio State University; Honorary degrees from Heidelberg, Rio Grande, Steubenville and Otterbein Colleges, and Miami, Akron, Capital, Youngstown, Wilberforce, Toledo, Cincinnati, Ohio State and Ohio Universities. Married; three daughters. Businessman. Public offices include: Member, Columbus Board of Education, 1937-39; City Auditor, Columbus, 1940-44; Mayor of Columbus, 1944-53; State Auditor, 1953-63; Governor of Ohio, 1963-71 and since January, 1975. Member, United States Olympic Committee; organizer, Knot Hole Gang; founder, National Caddie Association, Columbus Boys' Club, All-American Newspaperboys Sports Scholarship; President, Amateur Athletic Union; represented the United States at the 1948 Olympic Games in London; founder of the Pan American Games. State Chairman, Cancer Crusade, 1959, and Easter Seal Campaign, 1962; Trustee Emeritus, Rio Grande College; Chairman, National Advisory Council for Vocational Education. Member, National Governors' Conference Executive Committee, 1963-64, 1966-67; Vice Chairman, Special Study Committee on Riot Control, 1965-66; Vice Chairman, Committee on Law Enforcement, Justice and Public Safety, 1969. Vice Chairman, Midwestern Governors' Conference, 1965-66; Chairman, 1966-67. Presbyterian. Republican.



HELEN RHODES

## OKLAHOMA



*Inaugurated January, 1975  
Term will expire January, 1979*



DAVID L. BOREN

DAVID LYLE BOREN, born in Washington, D.C., April 21, 1941. B.A., Yale University, 1963; M.A., Oxford University, 1965; J.D., University of Oklahoma, 1968. Married; one son, one daughter. Attorney and professor. Company Commander, Oklahoma Army National Guard. Public offices include: Member, State House of Representatives, 1966-74; Governor of Oklahoma since January, 1975. Assistant to Director of Liaison, Office of Civil and Defense Mobilization, 1960-62; Propaganda Analyst, Soviet Affairs, U.S. Information Agency, 1962-63; Speakers Bureau, U.S. Embassy, London, England, 1963-65. Member of College of Young Democrats; National Forensic League; Association of U.S. Rhodes Scholars; Yale Club of Western Oklahoma; Seminole Sportsmens Club; Seminole Quarterback Club; Seminole Chamber of Commerce; Junior Chamber of Commerce; Phi Beta Kappa; Sigma Delta Rho; Order of the Coif, Phi Delta Phi; advisory member, Seminole County Women's Democratic Club; Board of Directors, Wewoka Chamber of Commerce; Vice Chairman, Legal Education Committee and Oklahoma Bar Association. Methodist. Democrat.



JANNA LOU BOREN



## OREGON



ROBERT W. STRAUB



*Inaugurated January, 1975  
Term will expire January, 1979*

ROBERT W. STRAUB, born in San Francisco, California, May 6, 1921. M.A., Dartmouth College. Married; two sons, three daughters. Businessman. Served in U.S. Army during World War II. Public offices include: Lane County Commissioner, 1954-58; Member, State Senate, 1958-62; State Treasurer, 1964-72; Governor of Oregon since January, 1975. Protestant. Democrat.



PAT STRAUB

## PENNSYLVANIA



*Inaugurated January, 1971  
Re-elected November, 1974  
Term will expire January, 1979*

MILTON J. SHAPP, born in Cleveland, Ohio, June 25, 1912. BSE, Case Institute of Technology. Married; one son, two daughters. Business Executive. Captain in United States Army during World War II. Governor of Pennsylvania since January, 1971. Chairman, Pennsylvania Committee for State Constitutional Revision, and Philadelphia Manpower Utilization Commission; President, Greater Philadelphia Council, American Jewish Congress; State Chairman, Pennsylvania American Jewish Congress; Vice Chairman, National Public Advisory Committee on Area Redevelopment; Vice President, National Council on the Aging; Consultant to the Peace Corps and U. S. Department of Commerce for Economic Redevelopment; Board Member, Police Athletic League of Philadelphia, Pennsylvania League for Consumer Protection, Philadelphia Association for Retarded Children; Member, Governors' Committee of 100 for Better Education. Chairman, Mid-Atlantic Governors' Conference, 1973-75. Jewish. Democrat.



MILTON J. SHAPP



MURIEL SHAPP

## PUERTO RICO



*Inaugurated January, 1973  
Term will expire January, 1977*

RAFAEL HERNÁNDEZ-COLÓN

RAFAEL HERNÁNDEZ-COLÓN, born in Ponce, Puerto Rico, October 24, 1936. B.A., Johns Hopkins University, 1956; LL.B., University of Puerto Rico, 1959. Married; three sons, one daughter. Attorney. Public offices include: Associate Public Service Commissioner, 1960-62; Secretary of Justice, 1965-67; President of Commonwealth Senate, 1969-73; Governor of Puerto Rico since January, 1973. Author of numerous books and articles on law. Member of Phi Beta Kappa, Phi Eta Mu, National Honor Society, Academy of Law and Science, American Academy of Political Science, Interamerican Association of Lawyers, National Council of Boy Scouts of America. Catholic. Popular Democrat.

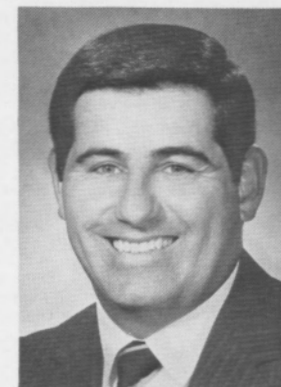


LILA MAYORAL DE HERNÁNDEZ-COLÓN

## RHODE ISLAND



*Inaugurated January, 1973  
Re-elected November, 1974  
Term will expire January, 1977*



PHILIP W. NOEL

PHILIP W. NOEL, born in Providence, Rhode Island, June 6, 1931. B.A., Brown University, 1954; J.D., Georgetown University Law School, 1957. Married; two sons, three daughters. Attorney. Member of U.S. Naval Reserve. Public offices include: Administrative Assistant to U.S. Senator John O. Pastore, 1955-56; Clerk, Rhode Island Constitutional Convention, 1958; Special Counsel to State Tax Administrator, 1958-59; Member, Warwick City Council, 1960-66; Mayor of Warwick, 1967-73; Governor of Rhode Island since January, 1973. Past President, Rhode Island League of Cities and Towns. Chairman, Warwick Heart Fund, 1968-69, and State Fund, 1972; State Municipal Vice Chairman, United Fund, 1969. Member of Kent County, Rhode Island, and American Bar Associations; American Judicature Society; Elks; Knights of Columbus. Member, National Governors' Conference Executive Committee, 1973-74. Catholic. Democrat.



JOYCE NOEL



## SOUTH CAROLINA



JAMES B. EDWARDS



*Inaugurated January, 1975  
Term will expire January, 1979*

JAMES B. EDWARDS, born in Hawthorne, Florida, June 24, 1927. B.S., College of Charleston, 1950; D.M.D., University of Louisville, 1955. Married; one son, one daughter. Dentist. Officer in U.S. Maritime Service, 1944-47; U.S. Navy, 1955-57. Public offices include: Member, Federal Hospital Council, 1969-73; State Senate, 1973-75; Governor of South Carolina since January, 1975. Past Director, Coastal Carolina Boy Scouts; Past member, Board of Trustees, Charleston County Hospital and Greater Charleston YMCA; Past member, Sertoma International and Advisory Council to the Dean, College of Dental Medicine, Medical University of South Carolina. Member, Board of Trustees, College Preparatory School, and Baker Hospital, Charleston, South Carolina. Member of Executive Committee, Alumni Association, College of Charleston; Charleston Council of the Navy League of the U.S.; Delta Sigma Delta; Pi Kappa Phi; Omicron Delta Kappa; Phi Delta; Mason; Order of AHEPA, and numerous professional organizations. Methodist. Republican.



ANN EDWARDS

## SOUTH DAKOTA



*Inaugurated January, 1971  
Re-elected November, 1972, 1974  
Term will expire January, 1979*



RICHARD F. KNEIP

RICHARD F. KNEIP, born in Tyler, Minnesota, January 7, 1933. Attended St. John's University, Minnesota, and South Dakota State University. Married; eight sons. Businessman. Served in United States Air Force, 1951-55. Public offices include: Member, State Senate, 1965-71; Governor of South Dakota since January, 1971. Member of American Legion. Member, National Governors' Conference Executive Committee, 1972-73. Vice Chairman, Midwestern Governors' Conference, 1974-75. Catholic. Democrat.



NANCY KNEIP

## TENNESSEE

Photograph  
not  
available  
as of  
publication  
date.



RAY BLANTON

*Inaugurated January, 1975  
Term will expire January, 1979*

RAY BLANTON, born in Harden County, Tennessee, April 10, 1930. B.S., University of Tennessee, 1951. Married; two sons, one daughter. Businessman. Public offices include: Member, State House of Representatives, 1965-67; U.S. House of Representatives, 1967-72; Governor of Tennessee since January, 1975. Past Chairman of Finance, Boy Scouts of Adamsville; Member of Moose, Lions, Shrine, and University of Tennessee Alumni Association; Member, Board of Development, Lambuth College. Methodist. Democrat.

Photograph  
not  
available  
as of  
publication  
date.

BETTY BLANTON

## TEXAS



*Inaugurated January, 1973  
Re-elected November, 1974  
Term will expire January, 1979*

DOLPH BRISCOE, born in Uvalde, Texas, April 23, 1923. Graduate of University of Texas, 1943. Married; one son, two daughters. Rancher and business executive. Served in China-Burma-India Theatre during World War II. Public offices include: Member, State House of Representatives, 1949-57; Governor of Texas since January, 1973. Named "Outstanding Conservation Rancher in Texas," 1958. Received Knapp-Porter Award for distinguished service to agriculture by Agricultural Extension Service, Texas A&M University, 1966. Past President of Texas and Southwestern Cattle Raisers Association, 1960-61; and regional and state Chambers of Commerce, 1967-68. Regional Director, Boy Scouts of America. Member of various banking and educational boards. Member, National Governors' Conference Executive Committee, 1973-74. Episcopalian. Democrat.



DOLPH BRISCOE

JANEY BRISCOE



## UTAH



CALVIN L. RAMPTON



*Inaugurated January, 1965  
Re-elected November, 1968, 1972  
Term will expire January, 1977*

CALVIN L. RAMPTON, born in Bountiful, Utah, November 6, 1913. B.A., University of Utah; attended George Washington University; LL.B., University of Utah Law School, 1940. Married; two sons, two daughters. Attorney. Served in the Utah National Guard beginning in 1932; active service during World War II included duty in European Theatre; awarded Bronze Star and Army Commendation Ribbon; served as Chief of Army Claims Commission; left active duty with rank of Major; presently Reserve Colonel in Army Field Judiciary Service. Public offices include: County Attorney, Davis County, 1939-40; Assistant Attorney General of Utah, 1941 and 1946-48; Governor of Utah since January, 1965. Member of International Academy of Trial Lawyers. Member, National Governors' Conference Executive Committee, 1966-68, 1969-70, 1974-75; Chairman, Committee on Education, 1967-68; Chairman, Committee on Law Enforcement, Justice and Public Safety, 1969; Chairman, Committee on Executive Management and Fiscal Affairs, 1971-74. Chairman, Education Commission of the States, 1967-68. Vice Chairman, Western Governors' Conference, 1968-69; Chairman, 1969-70. Chairman, National Governors' Conference, 1974-75. Latter Day Saint. Democrat.

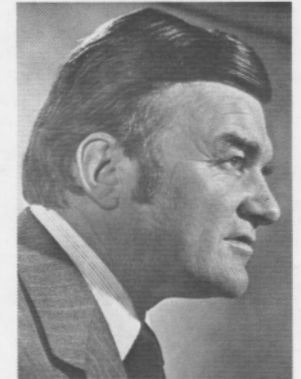


LUCYBETH RAMPTON

## VERMONT



*Inaugurated January, 1973  
Re-elected November, 1974  
Term will expire January, 1977*



THOMAS P. SALMON

THOMAS P. SALMON, born in Cleveland, Ohio, August 19, 1932. Graduate of Boston College, 1954; J.D., Boston College Law School, 1957; LL.M., New York University Law School, 1958. Married; one son, three daughters. Attorney. Public offices include: Town Counsel, Rockingham, Vermont, 1959-72; Municipal Court Judge, Bellows Falls, 1963-65; Member, State House of Representatives, 1965-70; House Minority Leader, 1969-70; Governor of Vermont since January, 1973. Member of local, county and American Bar Associations; American Trial Lawyers Association; Elks; Moose; Knights of Columbus. Chairman, New England Governors' Conference, 1974-75. Member, National Governors' Conference Executive Committee, 1974-75. Catholic. Democrat.



MADELEINE SALMON  
"Madge"



## VIRGINIA



MILLS E. GODWIN, JR.



*Inaugurated January, 1966  
Term expired January, 1970  
Inaugurated January, 1974  
Term will expire January, 1978*

MILLS E. GODWIN, JR., born in Nansemond County, Virginia, November 19, 1914. LL.B., University of Virginia, 1938; LL.D. (hon.), Elon, Roanoke, and Elmira Colleges, College of William and Mary, and Washington and Lee University. Married. Attorney and farm operator; F.B.I. special agent, 1942-46. Public offices include: Assistant Commonwealth's Attorney, 1938-42; member, State House of Delegates, 1948-52; Senate, 1952-60; Lieutenant Governor, 1962-66; Governor of Virginia, 1966-70, and since January, 1974. Board member, Elon and Virginia Wesleyan Colleges and Thomas Jefferson Memorial Foundation. Recipient of special awards from Suffolk and Nansemond County, Virginia Chamber of Commerce, National Guard and Education Association. Past President, Ruritan National; member of Phi Delta Phi, Omicron Delta Kappa, Raven Society and Masons. Member, National Governors' Conference Executive Committee, 1967-69. Vice Chairman, Southern Governors' Conference, 1968-69, 1974-75. Chairman, Southern Regional Education Board, 1968-69. Congregational Christian. Republican.



KATHERINE GODWIN

## VIRGIN ISLANDS



*Inaugurated January, 1975  
Term will expire January, 1979*

Information not available  
as of publication date.

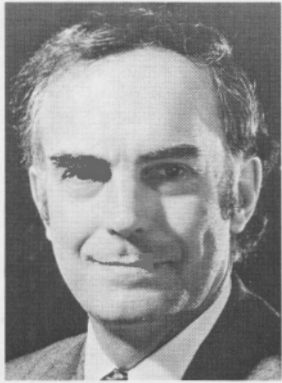
AGNES KING

Photograph  
not  
available  
as of  
publication  
date.

CYRIL E. KING

Photograph  
not  
available  
as of  
publication  
date.

## WASHINGTON



DANIEL J. EVANS



*Inaugurated January, 1965  
Re-elected November, 1968, 1972  
Term will expire January, 1977*

DANIEL JACKSON EVANS, born in Seattle, Washington, October 16, 1925. B.S. and M.S., University of Washington, 1948 and 1949. Married; three sons. Civil and Structural Engineer. Served as Naval officer in Pacific Theatre during World War II and in Korean War; Admiral's aide at peace negotiations at Panmunjom; discharged as Lieutenant, Senior Grade, in 1953. Public offices include: Member, Washington House of Representatives, 1956-64; House Minority Floor Leader, 1960-64; Governor of Washington since January, 1965. Member, Washington State Society of Professional Engineers and American Society of Civil Engineers. Member, National Governors' Conference Executive Committee, 1966-67, 1973-75; Chairman, Committee on Constitutional Revision and General Government Organization, 1966-68; Chairman, Committee on Executive Management and Fiscal Affairs, 1969; Chairman, Committee on Transportation, Commerce, and Technology, 1969-72. Vice Chairman, Western Governors' Conference, 1967-68; Chairman, 1968-69. Chairman, National Governors' Conference, 1973-74. Congregationalist. Republican.



NANCY EVANS

## WEST VIRGINIA



ARCH A. MOORE, JR.



*Inaugurated January, 1969  
Re-elected November, 1972  
Term will expire January, 1977*

ARCH A. MOORE, JR., born in Moundsville, West Virginia, April 16, 1923. B.A. in Political Science (1948) and LL.B. (1951), West Virginia University; also attended Lafayette College. Married; one son, two daughters. Attorney. World War II veteran; Recipient of Purple Heart; Combat Infantryman's Badge; European Campaign Ribbon with three Battle Stars. Public offices include: Member, West Virginia House of Delegates, 1953-56; Member, United States House of Representatives, 1957-68 (served as Ranking Republican Member of numerous House Committees); Governor of West Virginia since January, 1969. Member of American Bar Association, American Judicature Association and Phi Delta Phi Legal Fraternity. Member of many fraternal, commercial, public service and veterans' organizations. Member, National Governors' Conference Executive Committee, 1969-70, 1974-75. Chairman, National Governors' Conference, 1971-72. Vice Chairman, Mid-Atlantic Governors' Conference, 1973-75. Chairman, Education Commission of the States, 1975-76. Methodist. Republican.



SHELLEY MOORE

## WISCONSIN



PATRICK J. LUCEY



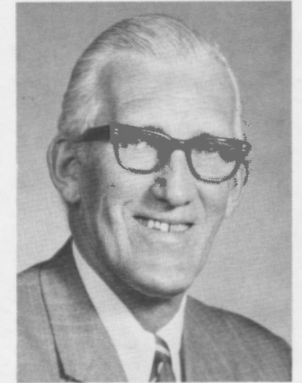
*Inaugurated January, 1971  
Re-elected November, 1974  
Term will expire January, 1979*

PATRICK J. LUCEY, born in LaCrosse, Wisconsin, March 21, 1918. B.A., University of Wisconsin, 1946. Married; two sons, one daughter. Business executive. United States Army Officer, Caribbean Theatre, 1941-45. Public offices include: Treasurer, Ferryville School Board, 1946-49; Justice of the Peace, 1946-50; Member, DeSoto Union Free High School Board, 1947-50; Member, State Assembly, 1949-51; Lieutenant Governor, 1965-67; Governor of Wisconsin since January, 1971. Member, National Governors' Conference Executive Committee, 1973-74. Catholic. Democrat.



JEAN LUCEY

## WYOMING



ED HERSCHLER



*Inaugurated January, 1975  
Term will expire January, 1979*

ED HERSCHLER, born in Lincoln County, Wyoming, October 27, 1918. Graduated, University of Wyoming Law School, 1949. Married; one son, one daughter. Attorney. Served with the U.S. Marine Corps during World War II, 1942-45. Public offices include: Kemmerer Town Attorney; Lincoln County Prosecutor; Member, State House of Representatives, 1959-69; Governor of Wyoming since January, 1975. Member, Board of Directors, Wyoming Heart Association; American Lung Association of Wyoming; Goettche Rehabilitation Center, Wyoming; past President, Wyoming Bar Association; past Executive Secretary, State Democratic Central Committee; Director, American Legion's Boys' State. Episcopalian. Democrat.

CASEY HERSCHLER

Photograph  
not  
available  
as of  
publication  
date.