



# Framingham State

A MAGAZINE FOR ALUMNI AND FRIENDS OF THE UNIVERSITY



## Healthy Career Opportunities

**Food & Nutrition** Emerges as 21st-Century Super Major



**WINTER COMMENCEMENT**

Hundreds gather to honor the achievement

**50TH ANNIVERSARY OF CHILD DEVELOPMENT LAB**

Officials rededicate the Jeanne M. Canelli Child Development Lab

**PRESIDENT'S REPORT**

Highlights of the University's progress during fiscal year 2012

Framingham State University

Spring 2013  
Published Semiannually

**EXECUTIVE EDITOR**

Dan Magazu

**WRITERS**

Dan Magazu  
Kathleen McDonough '13  
Maura King Scully

**PHOTOGRAPHY**

Robert Carlin Photography  
Kent Dayton Photography  
David Fox Photography  
Dan Magazu  
Zeina Sader '13

**ADVISORY TEAM**

Eric Gustafson  
*Development and Alumni Relations*  
Kathleen Lynch '02, '10  
*Sports Information*  
Melinda Stoops  
*Student Affairs*  
Robert Walmsley '02  
*Alumni Relations*  
Ellen Zimmerman  
*Academic Affairs*

**PUBLICATIONS INTERN**

Kathleen McDonough '13

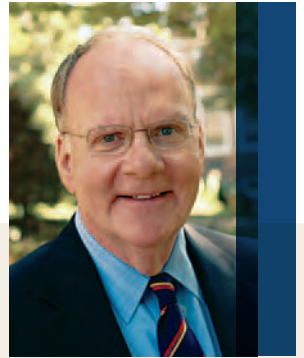
**DESIGN**

Moth Design

**COPY EDITOR**

Linda Walsh  
*Editorial Express*

100 State Street, PO Box 9101  
Framingham, Massachusetts 01701-9101  
www.framingham.edu



**LETTER from the PRESIDENT**

**HEALTHY CAREER OPPORTUNITIES**

An important part of our mission at Framingham State University is preparing a highly educated workforce to boost the Massachusetts economy. We seek to prepare our students for success in important fields that are growing. As the economy evolves and new opportunities for employment develop, our academic programs and offerings also evolve to meet the need.

No program demonstrates this process better than our Food and Nutrition major. Born out of our Home Economics program, and the Household Arts Program before it, Food and Nutrition has become a science-intensive major that opens a world of professional opportunities for our students. Initially designed as a program for nutritionists seeking to work in hospitals and other clinical settings, the employment opportunities for registered dietitians and nutritionists have grown as people have come to understand the correlation between a healthy lifestyle and a long and happy life. This has led to substantial growth in the number of Food and Nutrition majors on campus. In fact, last fall the program welcomed its largest incoming class since its inception.

Today, Framingham State's Food and Nutrition alumni play major roles in a variety of industries, from the traditional clinical setting to nonprofit agencies such as Project Bread and the Greater Boston Food Bank and commercial food companies and restaurants such as Kashi and Legal Sea Foods.

Inside this issue of *FSU Magazine*, you will hear from current students who are putting their classroom knowledge to practice while interning at local hospitals, schools and community centers. You will learn about the diverse career paths our Food and Nutrition alumni have taken, and you will discover how the John C. Stalker Institute of Food and Nutrition is shaping school nutrition policy and standards across the Commonwealth. These stories demonstrate how a long-standing Framingham State academic program has evolved to meet the needs of the Commonwealth in the 21st century.

Best wishes,

A handwritten signature in gold ink that reads "Timothy J. Flanagan". The signature is fluid and cursive, written in a professional style.

Timothy J. Flanagan, PhD  
President

TABLE of CONTENTS



2



10



12



32

For content available online visit [www.framingham.edu](http://www.framingham.edu)

the feature

02 HEALTHY CAREER OPPORTUNITIES

Framingham State's Food and Nutrition Program has emerged as a 21st-Century super major

in this issue

10 WINTER COMMENCEMENT 2013  
Honoring the Achievement: Alumni, family and friends gather on campus to celebrate the graduates

INSERT FISCAL YEAR 2012 PRESIDENT'S REPORT  
An overview of Framingham State's progress during FY 2012

16 HONOR ROLL OF GIVING  
We recognize and thank those who supported the University's current and future students by making a gift in FY 2012

our departments

08 STUDENT VOICE | A Coordinated Effort  
Food and Nutrition Major Sarah Coughlin '14 talks about how the University's Coordinated Program in Dietetics provides her with a strong academic background and practical experience

09 ON COURSE | A Distinguished Career  
Dr. Patricia Luoto reflects on her career in the Food and Nutrition Department and on leading the John C. Stalker Institute of Food and Nutrition

12 CAMPUS LIFE | Jeanne M. Canelli Child Development Lab  
For 50 years, the University's Child Development Lab has been preparing students to become early childhood educators

14 FACULTY NEWS | Teaching a Community How to Eat Healthy  
Framingham State Instructor Karen White talks about her hit cable access show *Healthy Bites*, which has been shown on local stations in nine other states

24 ALUMNI CORNER | 2013 Alumni Achievement Awards  
Alumni are recognized for their career and community accomplishments

26 RAM NATION | Ram in Focus  
Volleyball Captain Andressa Fernandes '14 led the FSU Volleyball Team to its best finish in school history last fall

28 CLASS NOTES | News from Alumni  
Learn how your classmates are spending their time

32 HAPPENINGS | McAuliffe Center Renovations  
State and local officials gathered to celebrate the new planetarium and renovations at the Christa Corrigan McAuliffe Center

33 DONOR PROFILE | Fred Brown Includes FSU in His Will  
Fred Brown honors the memory of his wife, Marjorie (Morgan) Brown, by including her beloved alma mater in his will

Once confined to hospitals and other clinical settings, Food and Nutrition graduates are now out there in the world in a wide variety of careers.

**Food & Nutrition**

Emerges as  
21st-Century  
Super Major

# Healthy Career Opportunities

Amount per Serving	% DV*
Director of Food and Nutrition Services, Boston Public Schools	'96
Food Technologist, Natick Soldiers System Center	'03
Chef, Dietitian and Food Writer, America's Test Kitchen	'06
Project Bread, Senior Manager	'09
Senior Quality Manager, Edesia Global Nutrition Solutions	'79
Physician Liaison, Nemours/Alfred I. DuPont Hospital for Children	'80
VP of Client Support and Education, The CBORD Group	'77
Director, New England Center for Nutrition Education	'70

What do U.S. service personnel in Afghanistan, kids at the Boys & Girls Club in Chelsea, and 58,000 Boston Public Schools students have in common? They've all been touched by the Framingham State University Food and Nutrition Program.

"As healthcare changes, so does where we 'do' nutrition," says Janet Schwartz, chair of the Department of Consumer Science. Recognizing this new reality, the Food and Nutrition Program prepares students to work in three diverse settings: clinical, community and food service.

"In addition to hospitals, clinical includes elder care, dietitians in private practice and diabetes educators," Schwartz explains. Community settings involve nonprofit organizations, such as Project Bread and Oxfam, and government programs like Women, Infants and Children (WIC). Opportunity also abounds in the commercial side of the business, with FSU graduates at food companies like Kashi and Unilever. In addition, Food and Nutrition can be a powerful combination degree for those in culinary fields or exercise physiology. "One of our graduates (Bryan Roof '06), who also had a culinary degree, is now senior editor at *Cook's Country* magazine," she notes.

\* Actual positions held by FSU Food and Nutrition alumni





Jill (St. Marie) Bates '03

“Something as basic as food makes a huge difference in soldiers’ lives and their morale in the field.”

## A Few Good Nutritionists

Jill (St. Marie) Bates '03 is one of 25 FSU Food and Nutrition graduates working at the Natick Soldier Systems Center. A food technologist, Bates is on a team in charge of the sensory evaluation laboratory where “we evaluate all of the ration products to ensure they’re of the highest quality,” she explains. “Something as basic as food makes a huge difference in soldiers’ lives and in their morale in the field. We’re always testing different things, purchasing new products and putting them through the test.”

Rations, she explains, have to be shelf stable for three years at 80 degrees Fahrenheit. Meals are one thing, but there are also morale-boosting treats. Some commercially wrapped candies, like M&Ms and Skittles, are fine as is. Others, like Pop Tarts and pretzels, need to be in special laminate films to pass inspection.

“We’ve just figured out how to package condiments like ketchup, mustard and hot sauce in a special new high-acid packaging so they’ll stay shelf stable,” Bates notes.

On the lower-tech side, Stephanie Zafiroopoulos '13 is interning at the Greater Boston Food Bank. “I create handouts for the Brown Bag Lunch Program, run through senior centers and school-based food pantries, which highlight different nutritional aspects of the lunch,” she says. “Typically, they are related to a specific theme. October was Breast Cancer Awareness Month, so we featured high-antioxidant foods.”



Jill Bates '03 works in the sensory evaluation laboratory at the Natick Soldier Systems Center where she evaluates ration products to ensure their quality.

25

FSU nutrition graduates work at the Natick Soldier Systems Center

But the favorite part of her internship is the monthly Kids Café she teaches at the Boys & Girls Club in Chelsea. “They get so excited, especially when we do demonstrations,” she says. Last month, Zafiroopoulos taught the group how to make smoothies, using healthy ingredients like fresh fruit and plain Greek yogurt. “It’s rewarding to work with the kids, particularly when I can get them to try something new,” she says.

This internship has also exposed Zafiroopoulos to a new field: community nutrition—one she hadn’t considered before. “I’m really enjoying it. This has opened up a lot of possibilities for me,” she says.

In Boston, Michael Peck '96 is tackling kids’ nutrition on a broader level: as director of food and nutrition services for the Boston Public Schools. Peck has spent the majority of his career in school food service, something he never imagined when he enrolled at Framingham State. An internship in the Brookline Public Schools, arranged with the help of one of his professors, introduced Peck to school food service—and he was hooked. “In schools, you’re at the front end, trying to help establish good patterns and access to better foods. It’s incredibly satisfying,” he says.



Michael Peck '96

“In schools, you’re at the front end, trying to help establish good patterns and access to better foods.”

# Ever-Expanding Opportunities

As the settings for nutrition expand, so do the job prospects. Dr. Patricia Luoto, executive director of the John C. Stalker Institute (JSI) of Food and Nutrition and a faculty member, traces increased opportunities to the nation's growing interest in food and nutrition. "Part of it is the overweight and obesity epidemic, and part of it is the First Lady's focus on kids' nutrition," she says, noting Michelle Obama's Let's Move Initiative. "There's also greater awareness of the role nutrition plays in health and wellness, as well as its role in chronic disease management."

This greater awareness has led to a bumper crop of majors: Last fall, the Food and Nutrition Program accepted its largest incoming class ever—100 students—bringing the total to 250 majors. Students come to Framingham State because "our reputation is at the top," says Dr. Luoto.

Students currently majoring in Food and Nutrition at FSU

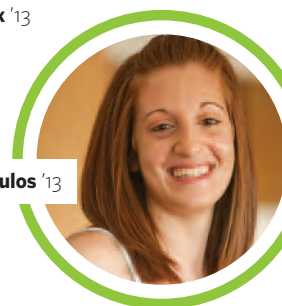
250

More and more people are starting to understand the correlation between a healthy diet and a long and happy life.

"I feel like the opportunities are endless, because you have all these skills."



Leora L'Heureux '13



Stephanie Zafiroopoulos '13

Leora L'Heureux '13 came to appreciate that national reputation when she attended the Food & Nutrition Conference & Expo (FNCE), sponsored by the Academy of Nutrition and Dietetics, in Philadelphia last fall. "Everyone there knew about Framingham State," she says. At an alumni reception, she found there was "immediate bonding because alumni know you went through the same rigorous training they had, so they automatically hold you to a higher standard."

Now interning at New England Rehabilitation Hospital in Woburn, L'Heureux will switch to food service in the Dedham Public Schools next semester. "Internships are great because you can see what direction you want to take," she says. Right now, L'Heureux thinks that she'll pursue a clinical setting, at least right out of school.

That's what Jill Bates did. Following graduation, she worked at Lawrence General Hospital as a dietitian. After a few years, she was ready for a change. "A friend who worked at the Natick Army Labs told me about an opportunity there," she says. "Nutrition is a really diverse field. I feel like the opportunities are endless, because you have all these skills. And the strength of Framingham State University's program is widely known."

“Fundamentally, we believe that students still have to know how to prepare food and how much it costs.”

**John C.  
Stalker  
Institute**

Celebrates  
**25** Years



**Karen McGrail**

## Tradition Runs Deep

Karen McGrail, director of the John C. Stalker Institute, calls FSU's Food and Nutrition Program “the premier program in New England.” And because it's at a state university, “students are getting an incredibly high-quality experience with a phenomenal cost-benefit ratio. But that's not at the expense of personal attention: Faculty members are very vested in each student's success. Students get a lot of individual attention.”

McGrail, also an adjunct instructor in the program, speaks from experience. She holds both bachelor's and master's degrees in nutrition from FSU. Prior to 1999, she worked in pediatric and neonatal nutrition at Massachusetts General Hospital and MetroWest Medical Center, and then in private practice in a pediatrician's office consulting on nutrition issues.

“The foundation for my career has been my Framingham State degree,” she says. “I couldn't have done all the things I have without it.” Today's students have the advantage of a robust internship program, which McGrail calls “amazing opportunities to prepare students for future jobs.”

As forward facing as the program is, Schwartz points out that it's also firmly rooted in Framingham State history. “Framingham State has always been strong in nutrition. Years ago, it was based in home economics. Now, there's much more science and technology. But fundamentally, we believe that students still have to know how to prepare food and how much it costs. We haven't lost those very basic values. We want students to learn that, as well as how to write grants and create their own businesses.”

“In other words,” concludes McGrail, “with this degree, the sky's the limit.”

## Reaching Out

As a state university, FSU takes its public mission seriously. In the Food and Nutrition Program, that mission is lived through the John C. Stalker Institute (JSI) of Food and Nutrition, a resource for professionals responsible for the nutritional health of Massachusetts schoolchildren.

In 2013, the JSI, funded by the Massachusetts Department of Elementary and Secondary Education, celebrates 25 years of providing programs and training to school nutrition directors, managers and line staff at systems throughout the Bay State.

“Massachusetts is unique in that it has this resource—there's nothing else like it at the state level anywhere in the country,” says JSI Director Karen McGrail. “Because it's housed at Framingham State University, it's the best of both worlds. It means JSI can work collaboratively with students in courses and on graduate assistantships, and can be a resource for projects. It's also great that the people who take part in Stalker Institute programs see that connection. Many of them then decide to come to Framingham State University for their degrees.”

The Food and Nutrition Program is planning a gathering on Saturday, May 4, to give alumni a chance to reconnect and to celebrate the 25th anniversary of JSI.

Visit the University's website at [www.framingham.edu](http://www.framingham.edu) for emerging details.



# ALUMNI PROFILES Food & Nutrition Success Stories



## Ashley (Hall) Krebs '09

Senior Manager, Child Nutrition Outreach Program

### PROJECT BREAD

Ashley Krebs says one of the best aspects of Framingham State's Coordinated Program in Dietetics is that it exposes students to several different areas of nutrition. That helped her realize that she has a passion for community nutrition.

Krebs is the senior manager of the Child Nutrition Outreach Program. The program is run through a partnership between Project Bread, a nonprofit hunger-relief organization, and the Massachusetts Department of Elementary and Secondary Education. Krebs works with targeted communities in central and western Massachusetts in an effort to increase school breakfast participation and to promote the Summer Food Service Program.

"The work is really rewarding, and it allows me to have an administrative role, while also maintaining a direct connection to the community," she says. "I have my feet in both worlds."

Krebs has strong ties to Framingham State. For one thing, it's her mother's alma mater. Maria Hall '94 is the current director of school nutrition for Walpole Public Schools. FSU is also where Krebs met her husband, Brandon Krebs '09, a fellow Food and Nutrition graduate. "I loved my time at Framingham State," she says. "I got a great education and made some incredible friendships."



## Bryan Roof '06

Chef, Dietitian and Food Writer

### AMERICA'S TEST KITCHEN

Bryan Roof wears many hats in his professional career. The chef, dietitian, food writer and editor works at America's Test Kitchen in Brookline, where he develops delicious recipes for the "at home" cook. The recipes are compiled in two publications—*Cook's Illustrated* and *Cook's Country*.

"I work with a team of six test cooks," says Roof, who is senior editor of *Cook's Country*. "We develop a lineup of what we are going to make for the whole year and then attack it issue by issue. Each dish is critiqued, and I will edit the recipes prior to publication."

In addition to the two magazines, America's Test Kitchen offers cookbooks and online cooking courses and also creates programming for PBS. "It's a perfect job for me," Roof says. "I have a family, so I don't want to be stuck in a restaurant kitchen all night long. It's opened a lot of great opportunities. I'm on television doing segments for PBS, which is a dream situation for any chef."

Roof spent five years as a professional chef prior to coming to Framingham State to be trained as a registered dietitian. "Framingham was appealing because the tuition is affordable, the campus is small, and the professors have impressive backgrounds," Roof says. "It's a great value."



## Maryann Sterin '80

Physician Liaison

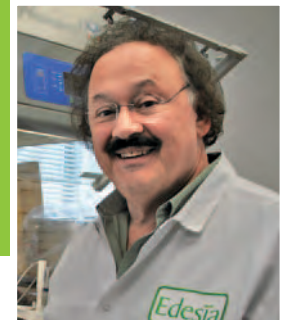
### NEMOURS/ALFRED I. DUPONT HOSPITAL FOR CHILDREN

Maryann Sterin knows firsthand the wide variety of different career paths one can take with a Food and Nutrition background.

After graduating from Framingham State in 1980, she began her career as a clinical dietitian for the food-service company Seiler Corporation. Shortly after that, Sterin joined Ross Laboratories (now Abbott Laboratories) as a medical nutritional representative in Boston, selling the adult liquid nutritional line of Ensure products. She also has held jobs as an online chef for LA Weight Loss and as a referral specialist for Remuda Ranch, a hospital for people with eating disorders.

Today, Sterin is a physician liaison for Nemours/Alfred I. duPont Hospital for Children in Delaware. In this role, she meets with community pediatricians to provide them with information on the hospital for patient referrals. "Being a registered dietitian adds a lot of value, because I am very familiar with any clinical setting," Sterin says. "It lends a lot of credibility when I walk into an office and talk with them about what we are doing at the hospital."

Sterin says that she was first introduced to nutrition when she took it as an elective at North Quincy High School. Her teacher, FSU alumna Maureen (McKay) Ajemian '72, encouraged her to attend the University.



## Stephen Martinello '79

Senior Quality Manager

### EDESIA GLOBAL NUTRITION SOLUTIONS

If it isn't fresh, it isn't getting past Stephen Martinello. The Food and Nutrition major is also a registered environmental health specialist and a registered sanitarian.

Martinello developed the food safety and public health programs for Legal Sea Foods back when the restaurant chain was just starting to expand.

"They had five restaurants and a small processing plant," Martinello says. "I built them a microbiology lab and started testing the products they were making and instituting food safety plans, hazard analysis and critical controls."

While working as the director of Quality Control for Legal Sea Foods, Martinello helped the U.S. Food and Drug Administration shape the seafood-processing regulations that went into effect in 1997.

Today, Martinello is senior quality manager for Edesia Global Nutrition Solutions, a nonprofit producer of ready-to-use foods that are sent to malnourished children and their families throughout the developing world. He also oversaw the creation of the organization's state-of-the-art quality control system.

"The product is going to children suffering from severe malnutrition, so it has to be absolutely pristine," he says. "We have one of the highest-quality management systems in the world. I'm able to do food safety programs here that I wasn't able to do anywhere else."



Sarah Coughlin '14

Sarah Coughlin is enrolled in the University's Coordinated Program in Dietetics. She is a member of FSU's Honors Program, an SGA senator, a member of the Dance Team and the vice president of the local Beta Pi chapter of Phi Upsilon Omicron, the National Honor Society in Family and Consumer Sciences.

# A Coordinated Effort

## What attracted you to Framingham State's Coordinated Program in Dietetics?

Initially, I wanted to work in a hospital, but I didn't want to become a nurse. I've always loved food, particularly the health aspect, so I picked the Coordinated Program in Dietetics at Framingham State. The program allows you to take the academic courses needed to become a registered dietitian along with the supervised practice experience. That way, you are fully prepared for the national registration exam. I was surprised to learn about all the different career opportunities that are out there for dietitians.

## What practical experiences have you taken part in so far?

I had the opportunity to work at Norwood Hospital in the kitchens and with the dietitians. The best part was seeing the patients because you get to meet such a variety of people. Some are willing to listen to you, but others not so much. I've also had the chance to work at Marlboro Hospital, meeting with patients who were sent there at the recommendation of their doctors. Usually, they have warning signs such as high cholesterol or high blood pressure. The dietitian will go over their height and weight and review what they eat in a typical day. I also spent time at Dedham High School getting a feel for the food service operation and everything that goes into ordering and preparing the food.

## What would you like to do following graduation?

Originally, I was set on working at a hospital, but now I'm keeping my options open. Next year, I will have the opportunity to spend seven weeks working at a community nutrition facility. I'm really looking forward to that. What I love about the program is that I have the opportunity to work in a lot of different settings, so I can figure out which jobs are the best fit for me. It's opened up so many possibilities.

## Have you enjoyed your time at FSU?

I've loved my time at Framingham State, where I've made so many close friendships. Being part of the Honors Program has been great because it helped me to meet people right away. I lived on the Honors Floor in Towers Hall my freshman year, and I'm still friends with a lot of people who I met through that connection. It's also easy to get involved in the FSU community because there are so many different clubs and organizations.



# A Distinguished Career

WITH DR. PATRICIA LUOTO '76G

Dr. Patricia Luoto has been a member of Framingham State's Food and Nutrition Program since 1981. She is a Registered Dietitian and holds a Doctor of Education degree from Boston University. Dr. Luoto is a former chair of the Department of Consumer Sciences and was the first director of Framingham State's John C. Stalker Institute of Food and Nutrition. She continues to serve as executive director of the institute today. In 2002, Dr. Luoto was recognized as the Distinguished Faculty Member of the Year. She is retiring as a full-time professor at the end of the academic year.



**Professor Patricia Luoto**

## How has the Food and Nutrition Program changed since you arrived at FSU?

The three areas of study have remained the same—Nutrition Science and Clinical Nutrition, Community Nutrition, and Foodservice Systems and Management—but the curriculum has changed. Each area has become more specialized. The competencies required for students to become dietitians have increased significantly, as has the use of technology. In terms of career opportunities for our graduates, a lot has changed as well. When I first came to Framingham State, most students were interested in becoming clinical dietitians working in a hospital. We still see that as a primary interest, but now we're seeing students interested in other areas, such as school nutrition and community nutrition. Many students have a desire to use their degree to give back to the community, which has led to community nutrition becoming a big area of interest.

## How did you first get involved with the John C. Stalker Institute of Food and Nutrition?

The Massachusetts Department of Education approached us in the late 1980s and asked if we would set up a center that would provide professional development and training for the school nutrition programs across the Commonwealth. Framingham State was ideal due to its central location. I was asked to become director of the center as I was the only faculty member on staff at that time who had experience working in food service operations. The center is named in honor of John C. Stalker, the longtime director of the Commonwealth's Bureau of Nutrition Education and School Food Services.

## What impact has the Stalker Institute had on nutrition in Massachusetts, and what's in store for the future of the institute?

The work done through the Stalker Institute is really the highlight of my career. If you think about where it started to where it is today, the scope has broadened so much. Initially, it served as a resource solely for school nutrition professionals. Today, the institute provides year-round programming, including workshops, courses, conferences and certificate programs designed to support the Commonwealth's school and child nutrition professionals, including teachers. The institute has played a critical role in integrating nutrition education and wellness using a coordinated school health approach. Moving forward, I expect the scope of the institute to expand even further. We were recently approached by the National Food Service Management Institute about setting up a regional training center for the entire New England area that would be coordinated through the John Stalker Institute.

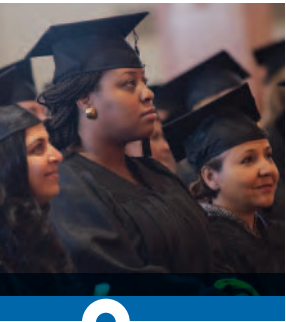
## What will you miss most about FSU, and what are your plans for the future?

Without question, I will miss the people the most. The faculty here not only are my colleagues, but also are my friends. I will also miss being involved with the students every day. I still intend to teach online courses in the graduate program, but that's not the same as having day-to-day contact with them. One thing I won't miss is grading papers on a regular basis. It will be nice to have a little more free time to spend with my grandchildren and travel.

# Honoring the Achievement

# Winter Commencement 2013

484 Graduates Join the FSU Alumni Association



**THE BIG MOMENT**

Students line up in preparation for receiving their diplomas.



**LIVE TO THE TRUTH**

Artist-in-Residence Mark Evans performs the University Hymn, *Live to the Truth*.



**DISTINGUISHED GUESTS**

Commissioner of Higher Education Dr. Richard M. Freeland looks on, while seated next to Vice President of Academic Affairs Dr. Linda Vaden-Goad and Chief of Staff and General Counsel Rita Colucci.



**FSU HONORS GRADUATES DURING WINTER COMMENCEMENT**

Hundreds of students, families, faculty and staff gathered in Dwight Hall on February 2 to celebrate Framingham State University's Winter Commencement 2013 during two ceremonies.

Undergraduate Commencement Speaker, Dr. Nicholas Racheotes, a professor of history at Framingham State, urged students to remain curious as they move into the next phase of their lives. "This is our greatest gift to you," Racheotes said. "It demands that you use all your senses. That you discover talents you never knew you had."

Dr. Richard M. Freeland, the Massachusetts Commissioner of Higher Education, served as the commencement speaker for the graduate ceremony and told the graduates that earning their master's degree was about embracing an ideal. "Today, we need the kind of leaders and thinkers and professionals that this University seeks to produce," Freeland said. "That means we need you."



**HARD WORK REWARDED**

The graduate students have a lot to celebrate after receiving their master's degrees.



248

BACHELOR'S DEGREES  
CONFERRED



**WORDS OF WISDOM**

Dr. Nicholas Racheotes, undergraduate commencement speaker, addresses the Class of 2013.



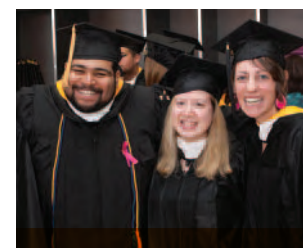
**PROUD PARENTS**

The graduates celebrate with their families following the ceremony.



**THE HOODING**

Dr. Ellen Zimmerman, vice president of Academic Affairs, assists the graduate program coordinators and advisors with the hooding of each master's degree recipient.



**ON THEIR WAY**

Many smiling faces were photographed following the ceremony.

236

MASTER'S DEGREES  
CONFERRED

69

LATIN HONORS  
STUDENTS

## University Opens New Community Education Center

by KATHLEEN MCDONOUGH '13



Framingham State sophomore Thierry Aka '15 came to the United States unable to speak a word of English and uncertain about how he was going to succeed here. Knowing he wouldn't make it far without being able to speak English, the Ivory Coast native enrolled in FSU's English as a Second Language course offered through the University's Community Education Program.

After a year in the course, Aka fully enrolled at Framingham State as an undergraduate economics major.

Aka shared his success story during a ribbon-cutting ceremony to celebrate the opening of Framingham State's new Community Education Center in the historic Jonathan Maynard Building, across from the University on Route 9. The center will house a variety of professional development and workshop opportunities for the community, in addition to the University's four English language programs.

Aka, who is now treasurer of the student Culture Club at FSU, says he hopes to use his degree to help fight poverty in his native Africa. He and all the other international students at FSU are grateful to the teachers and peers who are helping them to achieve success. "If you are helping us, you are helping our countries. By helping me, you are helping Africa."



## Jeanne M. Canelli Child Development Lab Celebrates 50th Anniversary

No matter how much you learn in the classroom, in any profession there is no substitute for on-site, practical experience. In the case of aspiring teachers, this means working in a classroom where young children get firsthand opportunities to read, write, listen, solve problems and play.

**"We get to observe them teaching in the field, putting theory and new knowledge into practice."**

For 50 years, Framingham State Early Childhood Education students have had the opportunity to teach and observe young children here on campus. "The Jeanne M. Canelli Child Development Lab is a learning environment in which children from the area come and spend their morning or afternoon," says Professor Emerita Dr. Cathleen Buydoso, a member of the Education Department at FSU for 30 years. "Students observe and interact with children, create lessons and write a case study after following the growth and development of one child during the 16-week semester.

All of this is done under the supervision of the lab director and teachers."

Dr. Buydoso was among those honored in March during a rededication of the lab to celebrate its 50th anniversary. The lab is named in memory of former FSU Professor Dr. Jeanne M. Canelli '70, who was director for 18 years and passed away in 2006. "Dr. Canelli was so active in early childhood organizations and issues throughout the state," says Valerie Hytholt '07, the current director of the lab. "I still run into people all the time who sorely miss her."

Child Development Lab Instructor Joni Theodoss '07 says she and Hytholt continually discuss Dr. Canelli today, and keep her guidance and instruction in mind as they plan lessons for the children and work with current students. "Working with Dr. Canelli was a great experience, because she had so much knowledge and expertise and was just so genuine with the kids," Theodoss says.



## An Invaluable Experience

Many Early Education alumni credit their time in the Child Development Lab with helping to shape their teaching style and approach. FSU alumna Jennifer Chirco '10 says she still draws upon her experience in the lab now that she has her own kindergarten classroom at McCarthy Elementary School in Framingham.

"I learned so much from Valerie, watching her model lessons and work with the children," says Chirco, who is pursuing her master's degree at FSU. "I also helped out on the Parent Advisory Board and learned a lot from her in terms of working with parents."

Education Chair Dr. Kelly Kolodny says the lab is an integral part of the department because it allows students to work directly with children while being observed by an instructor. "The importance of family connections also is recognized," Dr. Kolodny says. "Events such as art shows, literacy programs and movie nights are coordinated, which bring together preschool children, families, early childhood students and faculty."

Students get their first experience in the lab as part of Education 320—The Young Child and Emerging Literacy—previously taught by Dr. Buydoso and now taught by Dr. Marlene Correia. Students meet three days a week in class sessions and do a half-day a week in the lab as their field placement.



"One of the unique aspects of our program is that students are all working in the same class with the same children right on campus," Dr. Correia says. "We get to observe them teaching in the field, putting theory and new knowledge into practice. Then we can come back together as a class, and we have a common set of children and a common set of instructional practices we can talk about."

Gabriella Silvagni '14 has worked in the Child Development Lab for the past year and says she's amazed at how much the children absorb at such a young age. She has enjoyed working directly with the children and observing how other teachers work with them. "I'd love to work in a pre-school or kindergarten class after graduation, so this experience has been perfect for me," she says.

**“Working with Dr. Canelli was a great experience because she had so much knowledge and expertise, and was just so genuine with the kids.”**

Junior Kayla Simpson '14 says her experience working alongside other teachers in the lab has been huge in preparing her for a classroom of her own one day. "The main thing I learned is how to be quick on my feet and how to change plans if needed," says Simpson.

While the lab is steeped in 50 years of tradition, it's constantly adopting new teaching practices and technology to remain at the forefront of early childhood education.

"The best part of the lab is that it's never static," says Hytholt. "It continues to provide innovative and outstanding preschool experiences to make a difference in the lives of our children and families, and carries on as an excellent preschool program for our students to start their early childhood teaching careers."

## Business Student Launches Tech Website

Bursting with an entrepreneurial spirit and anxious to start his own company, Framingham State senior Alex Brayman recently launched UpRating.com, a technology website he hopes to develop into a business.



Brayman, a business major at FSU, co-founded the site with his friend, Jeffrey Blackler, who has a background in computer engineering technology. At the moment, the site primarily serves as a blog where Brayman posts information on some of the latest technology products and trends. Sometime next year, he plans to launch the full site, which will serve as a convenient technology search engine.

"Say you want to search for the fastest computer processor," Brayman explains. "If you search on Google, you are going to run into a bunch of news articles and advertisements, and you will have to do all sorts of research to get the answer to your question. On our site, we've done the research for you. So when you perform a search for the fastest processor, you will get a list of processors in descending order by speed."

Brayman says that in addition to listing information about products, they will have price comparisons for purchasing online or in stores. He and Blackler are realistic about the chances of the site developing into a viable business.

"We believe in the idea," Brayman says. "But even if it's not successful, figuring out how to build a functional website that looks nice is a great learning experience."

Brayman plans to pursue his MBA at Framingham State following graduation in the spring. He envisions himself either owning a company or working in upper management at a large corporation in the future.



## Karen White Teaches Community How to Eat Healthy

Framingham State Food and Nutrition Instructor Karen White '92, '98G has been sharing her tips for delicious and nutritious cooking on her popular cable access show, *Healthy Bites*.

"I want people to realize that food can be healthy and delicious," White says.

The show is produced at Westborough Community Access Television and has been picked up by cable access channels in nine other states, including California. White, a registered dietitian, says she was inspired to create the show while watching culinary legend Julia Child.

"I noticed that she wasn't afraid to make mistakes when she was cooking, and I realized you don't have to be perfect in the culinary world to have a cooking show," White says. "I'm not a culinary expert, but I do have a lot to share with people in terms of eating healthy."

White tapes one show each month and has produced about 21 shows since she started. In the fall, she taped a show on cooking with pumpkin, during which she created a healthy pumpkin black bean soup and pumpkin quesadillas. In December, she made seven holiday recipes that people can enjoy without packing

on the pounds. During each 30-minute episode, White discusses the health benefits of the foods she is using, in addition to instructing people on how to create the dish.

"Every recipe has to be easy and it has to be healthy," White says. "I want people to watch my show and think, 'I can do that.'"

**"I'm not a culinary expert, but I do have a lot to share with people in terms of eating healthy."**

White, who has taught Food and Nutrition courses at FSU since 2006, has incorporated the show into her senior-level Experience in Community Nutrition class. Each student is required to tape a five-minute segment for the show in which they create a healthy dish. The television station has come out to campus to tape the students in the University's food labs.

"It's worked out great," White says. "The students have really enjoyed being involved with the show."

Watch episodes of *Healthy Bites* online at [www.westboroughtv.org/healthy\\_bites.html](http://www.westboroughtv.org/healthy_bites.html).

# 21

SHOWS  
PRODUCED

# 9

STATES AIR  
*HEALTHY BITES*





# Welcome, New Faculty

FSU welcomes a diverse group of highly qualified faculty to the campus community.

## TENURE TRACK

### Dr. Lori Bihler

*History & Education Departments*

BA State University of New York at Binghamton  
MEd, PhD University of Sussex, UK

### Dr. Bartholomew Brinkman

*English Department*

BA University of Utah  
MA Johns Hopkins University  
MA, PhD University of Illinois at Urbana-Champaign

### Professor Stephanie Grey

*Art & Music Department*

BFA Carnegie Mellon University  
MFA Rhode Island School of Design

### Dr. Juliana Luna Freire

*Modern Languages Department*

BA Roanoke College  
MA, PhD University of Arizona

### Dr. Jesse Marcum

*Chemistry & Food Science Department*

BS University of New Hampshire  
PhD University of Colorado

### Dr. Lawrence McKenna

*Physics & Earth Sciences Department*

BS, PhD Massachusetts Institute of Technology

### Dr. Ruth Remington

*Nursing Department*

BS Rutgers University  
MS, PhD University of Massachusetts

### Dr. Nicole Rossi

*Psychology & Philosophy Department*

BA Mount Holyoke College  
MA Brandeis University  
MA, PhD University of New Hampshire

### Dr. Shelli Waetzig

*Chemistry & Food Science Department*

BS Creighton University  
PhD University of Kansas

### Dr. Chunsheng Yang

*Modern Languages Department*

BA University of Science and Technology of China  
MA The University of Nottingham Ningbo  
MA, PhD Ohio State University

## FULL-TIME TEMPORARY

### Dr. Joseph Adelman

*History Department*

BA Harvard University  
MA, PhD Johns Hopkins University

### Professor Kathleen Browne

*Chemistry & Food Science Department*

BA University of New Hampshire  
MA Worcester Polytechnic Institute

### Dr. Patrick Gordon

*Chemistry & Food Science Department*

BS University of Guyana  
MS University of New South Wales  
PhD University of Manitoba

### Dr. May Hara

*Education Department*

BA Cornell University  
MS City College of New York  
MA, PhD University of Wisconsin

### Dr. Ann Johnson

*Consumer Sciences Department*

BA Bryn Mawr College  
MBA Tepper School of Business at Carnegie Mellon University  
MS Framingham State University  
PhD Auburn University

### Dr. Athena King

*Political Science Department*

BA Coker College  
MA, PhD University of South Carolina

### Professor Douglas Leaffer

*Physics & Earth Science Department*

BS University of Miami  
MS Tufts University

### Professor Meredith O'Brien-Weiss

*English Department*

BA University of Massachusetts  
MA The American University

### Dr. Israel Rolon-Barada

*Modern Languages Department*

BA University of Puerto Rico  
MS Georgetown University  
PhD University of Málaga

# Thank You

## FISCAL YEAR 2012 HONOR ROLL of GIVING

### HORACE MANN SOCIETY

\$5,000.00+

Raymond P. and  
Maureen F. Boulanger  
Maureen (Murphy) Donovan '45  
Kevin M. '84 and Paula Foley  
Robert and Margaret (McIntyre)  
King '62  
Jonathan T. Lee  
Richard C. '70 and  
Mary E. Logan '71  
Kathleen (Ryan) Roberts '37  
Peter '90 and Cheri  
(Petersen) Salenius '96  
Roland A. Van Liew '79  
Roger Vorce

—  
Bose Corporation  
Boston College  
Class of 1962  
Coca Cola  
Davis Educational Foundation  
Framingham Union  
Aid Association  
Highland Street Foundation  
Independent Association  
of Framingham State Alumni  
LEF New England  
Liberty Mutual  
Linnea Anderson Trust  
Massachusetts Biotechnology  
Education Foundation  
Massachusetts Service Alliance  
MetroWest Health Foundation  
Sodexo, Inc. & Affiliates  
The Van Liew Family Foundation  
Arthur Ashley  
Williams Foundation  
Wyncote Foundation

### PRESIDENT'S CIRCLE

\$1,000 to \$4,999.99

James Brochu  
Silvy A. Brookby  
Andrew M. '87 and Robin Chaves  
Rita P. Colucci  
Paul C. '72, '76 and  
Candace H. Combe '79, '87  
Susanne H. (McGinnis) Conley '90  
Michael Desilets '69  
Alan G. Feldman  
Henry Fitzgerald  
Timothy J. and Nancy A. Flanagan

Barbara G. Gardner '82  
Kevin J. Gosnell '91  
Richard and Gillian Gregory  
Dale M. Hamel  
Jill D. Healey '67  
Doris A. Kalohn  
Elizabeth Kane  
Jeffrey B. Killian  
John and Judy C. Klaas  
Patrick D. and Kathleen Laughran  
Neil and Maria Martinuzzi  
Dr. Mary L. O'Connor '43  
Janet Pfeiffer  
Claire Ramsbottom '79  
Robert E. '83 and Lisa Richards  
James V. Roman '91  
Mary H. Shea  
Nancy A. Swiacki '68  
Janina W. Swiacki '67  
Drs. Linda and Bob Vaden-Goad  
Karen Williams

—  
Class of 2001  
Commercial Construction  
Consulting, Inc.  
Framingham Co-operative Bank  
Charitable Foundation  
Impact Framingham  
Louisa A. Nicholass Trust  
Pfeufer/Richardson P.C. Architects  
T & K Asphalt Services, Inc.  
UNUM Foundation  
Wing Press

### LUCRETIA CROCKER ASSOCIATES

\$500 to \$999.99

Robert P. Bonnevie  
Judy Brodtkin  
John T. Carroll  
Jane A. Cummings '52  
Kevin R. Currie '74  
Walter E. Davis '93  
Karen DeMartino '99  
Philip M. Dooher  
Priscilla D. (Delahunt) Douglas '56  
Maureen J. Dugan '71  
Ralph '96 and Shayna Eddy '98, '02  
Diane (Horton) Finch '66  
Judith Z. (Zaccagnini) Flynn '69  
Kathleen J. Freeman  
Judith Gilbride '66  
Scott B. Greenberg

Framingham State is reaching new heights as a comprehensive public university committed to academic excellence. This is due in large part to a loyal and active group of alumni, friends, parents and corporate partners who are dedicated to supporting our current and future students. With your help, the University continues to distinguish itself as a leader in public higher education in Massachusetts.

*Fiscal Year 2012 encompassed the period from July 1, 2011 through June 30, 2012*

Mark R. Haranas '77  
Eileen G. (Bruce) Hardaway '73  
Cam (Cellucci) Hilbert '46  
Joan E. Horrigan  
Dr. Kirk and Lorraine H. Jordan  
John C. Kalohn  
Richard Keats  
Anne MacIntyre '41  
Missy D. Margolis '62  
Robert and Elaine M. (Whitman)  
Martin '96  
Dana M. Neshe '90  
Garrett Niland '83  
Donna Paruti '76  
Lewis R. Piantadosi '90  
Alice L. Pomponio  
Marilyn M. Schwab '76  
Eli '92 and Laura Valk '00  
Karen Williams

—  
Amica Companies Foundation  
Carroll Advertising  
Company, Inc.  
Craig-Hallum Capital  
Group, LLC  
IBM Corporation Foundation  
Imperial Ford Corporation  
NStar Electric Corporation

### ELLEN HYDE ASSOCIATES

\$250.00 to \$499.99

Susan M. (Westcott)  
Alessandri '91  
Steven J. Baldelli '92  
Elaine V. Beilin  
Eileen R. (Zendali) Belloli '71  
Deborah Bitsoli  
Brian R. Bonazzoli '84  
Dena D. Brayson '92  
Caroline A. Breen '89  
Nancy Carr '69  
Mark E. Cohen '85  
Sandra C. Comastra '98  
Timothy M. Cornely '75, '80  
Kathleen Cotter '78  
Harold P. Coyle '74  
Hope Damon '79  
Eileen M. (Francis)  
DesRosiers '82  
Michael A. Fagone '98  
Priscilla J. (Woods-Bartlett)  
Galvin '97  
Karen I. Gibson '86  
Robert C. Graceffa '90

Doris Granger '48  
Warren C. Griffin '73, '78  
Eric P. and Maleah Gustafson  
Norma (MacLeod) Hagstrom '61  
Kathleen T. (Gardner)  
Hebden '70  
Suzanne M. (Thornton)  
Henricksen '02  
Christopher (Dwyer) Horblit '87  
James F. Kalohn  
Rosalie P. (Pittari) Kelleher '62  
Neil C. Kelley '79  
Donna G. Kressaty '77  
Elaine M. Lang '78  
Duc H. Le '86  
Emily Lindberg '41  
Gregory T. Livingstone '80  
Sheila MacAuley '67  
Marguerite A. Mahler  
Desmond F. McCarthy '81  
Joseph T. McConnon '97  
Pamela McGarry '71  
Jacqueline McGrory-Zeledon '96  
Kim Y. McGuckin '91  
John J. McLaren '88  
Walter B. '78 and  
Eileen (Tosney) Mills '78  
Stephen G. Miner '84  
Marilyn L. (Lally) Nalbandian '63  
Anne M. Paulsen '58  
James R. Pidacks '78  
Pauline (Willus) Pope '71  
Fernando Quezada  
Nina Ricci  
Peter D. Rosenbaum  
Dawn Ross '08  
Maureen K. Ryan '83  
Janet B. Schwartz  
Lisa A. (Walmsley) Slavin '99, '02  
Elin A. Soderholm '76  
Mark Sorenson '81  
Claire (Gilligan) Tremblay '71  
Richard D. VanBuskirk '72  
Roberta W. (Ward) Walsh '66  
Robert J. Wyman '01

—  
1st Ad Specialties  
Class of 1961  
Dell Employee Giving Program  
Haynes, Lieneck, and Smith, Inc.  
MetroWest Medical Center  
Middlesex Savings  
Charitable Foundation  
SC Johnson Foundation

### G.O.L.D. SOCIETY

**Graduates of the Last Decade**  
\$100+

June M. Bixby '02  
Paul F. Bolles '04  
Melissa M. Bonofilio '02  
James M. Carvalho '06  
Patrick W. Conley '02  
Zhiqi Fan '04  
Wendy H. Hanlon '02  
Suzanne M. (Thornton)  
Henricksen '02  
Julie-Ann (Mina)  
Horrigan '02, '11  
Anne G. Huntington '10  
Ramakrishna V. Iyer '06  
Dana M. Lemelin '11  
Marc D. Massarotti '10  
George F. Mohn '05  
Betsy A. Morris '06  
James P. '08 and  
Jan-Marie Murray '03  
Jenna B. Noel-Grinshleyn '07  
Anita L. Probst '03  
Rosemary E. Quirk '06  
Dawn Ross '08  
Joan M. Sacco '04  
Deborah L. Saltzman '10  
Joseph T. Sheehan '11  
Matthew D. Stockbridge '02  
Steven J. Tramontozzi '10  
Kym Welch '09

### EDMUND DWIGHT SOCIETY

**Planned Giving**

Estate of Lillian Buckely '62  
Estate of Alice G. Dabrowski '43  
Estate of Carol A. Gates  
Estate of Anita Goldner  
Estate of Edith (Davenport)  
Griswold '30  
Estate of Louise Guild '34  
Estate of M. Lucille Hanna  
Estate of Ursula Patterson '40  
Estate of Mary F. Thompson '55  
Estate of Barbara E. Tucker '38  
Linnea Anderson Trust  
Louisa A. Nicholass Trust

—  
Frederick Brown  
Grace G. Corrigan '79  
Ethel M. Fowler '51  
Carmela (Cellucci) Hilbert '46  
Elinor Zeeb '61

## UNDERGRADUATE ALUMNI

### By Class Year

#### 1936

Helen Dahill

#### 1937

Caroline Coderre  
 Claire (Foster) Hooper  
 Kathleen (Ryan) Roberts  
 Jeannette (Wilcox) Tucker

#### 1939

Leah Robinson

#### 1940

Margaret Gagliardi

#### 1941

Agnes (Garoian) Davagian  
 Emily Lindberg  
 Anne MacIntyre  
 Maude Payne  
 Charlotte Tarbox  
 Audrey Wellington

#### 1942

Esther (Height) Burlingham  
 Ruth (Rothberg) Erno  
 Anne (Sullivan) Healey  
 Eileen O'Connell  
 Helen Southwood

#### 1943

Sheila (O'Connell) Berg  
 Helen Colling  
 Mary (Decourcey) Doherty  
 Marie (Plunkett) Galeota  
 Gertrude (O'Connor) Kneeland  
 Marjorie Kummer  
 Mary Largess  
 Shirley Mason  
 Dr. Mary L. O'Connor

#### 1944

Mary Alves  
 Jacqueline Bush  
 Catherine Haggerty  
 Kathleen (Walsh) McGuire

#### 1945

Claire (Fitzpatrick) Bagale  
 Maureen (Murphy) Donovan  
 Virginia Farrell  
 Clare Forbes  
 Phyllis (Hamilton) Frechette  
 Arlene (Martin) Gray  
 Alice (Dowling) Griffin  
 Margaret Harper  
 Leonor Luiz  
 Rose Mary (Hoye) McCarthy  
 Dorothy Murphy  
 Rosemary O'Connell  
 Mary (Saulnier) Potter

#### 1946

Shirley Blacher  
 Cam (Cellucci) Hilbert  
 Mabel McCarthy  
 Helen Miller  
 Earlene Oman  
 Mary Roberts  
 Ellen Scannell

#### 1947

Frances (Bellantoni) Condaxis  
 Phyllis (Elmer) Gleason  
 Anna (Maglio) Grande  
 Mary Houghton  
 Edwina Howatt  
 Joan (Sutherland) Hulme

#### 1948

Florence (Gilboy) Borrelli  
 Audrey (Huff) Carpenter  
 Barbara (Smith) Condict  
 Marion (Noonan) Devlin  
 Doris Granger  
 Virginia (McCauley) Scott

#### 1949

Margaret (Sweeney) Branagan  
 Millicent (Jarvis) Callahan  
 Rosemary (Donahue) Campbell  
 Jean (Palmer) Dyer  
 Irene (Marotte) Ferguson  
 Shirley (Young) Muir  
 Miriam Nichols  
 Charlotte (Crosier) Orrall  
 Agnes Sayers  
 Mary Sughrue  
 Louise Toler  
 Elizabeth Walsh  
 Marie Welch

#### 1950

Virginia (Colwell) Anthony  
 Marie (McGillicuddy) Coyle  
 Anne (Couming) Grisanti  
 Ann (O'Brien) Healey  
 Elizabeth King  
 Julia Kula  
 Adele Monahan  
 Mary Ellen (Whearty) Mullins  
 Marjorie (Fisk) Scudder  
 Jean Shadley  
 Maria Timmerman

#### 1951

Anne (Bergman) Anderson  
 Leona (Smith) Briggs  
 Patricia (Driscoll) Casavant  
 Mary Ellen Collins  
 Jeanne (Goodman) Eriksen  
 Nancy (Boyle) Ferone  
 Ethel Fowler  
 Eleanor (Craig) Landry  
 Janet Montgomery  
 Dorothy Nathan  
 Alayne Retherford  
 Cora Rice  
 Nancy Ryan

Margaret (Tracy) Tuttle  
 Lois (Mason) Vashaw  
 Ann (Flaherty) Whelan  
 Muriel (Butler) Yager

#### 1952

Marjorie Brown  
 Grace (Norton) Carney  
 Jane Cummings  
 Barbara Curtiss  
 Eleanor Desaultels  
 Catherine Dewsnap  
 Alberta Durfee  
 Kathryn (Lavin) Ferri  
 Paula (King) Gaynor  
 Joanne Hartnett  
 Louise (Mealey) Kapples  
 Beverly (Richardson) Lowe  
 Jeanne Nash  
 Betty (Stephens) Pafenbach  
 Liz (Ryan) Polder  
 Ruth Rabelais  
 Josephine (Kennedy) Repko

#### 1953

Pauline (Ashness) Gallagher  
 Elizabeth Granfield  
 Alice Keefe  
 Barbara Kelley  
 Anne Quinlan  
 Mary (Young) Sioras

#### 1954

Eileen (Saunders) Buckley  
 Sandra (Dallaire) Bue  
 Virginia Cancroft  
 Anne (Hogan) Deveau  
 Anne Downey  
 Patricia Fordekonz  
 Ellen (O'Hare) Frank  
 Marjorie (Moran) McKay  
 Ann Quirk  
 Anne Slater  
 Ida Toro  
 Daurice Trachtenberg  
 Kathleen (Morrison) Weber

#### 1955

Joan (Calore) Bucher  
 Dorothy Charland  
 Emily (Sprague) Eisenhaure  
 Margaret (Norton) Hannigan  
 Mary (Chisholm) Johnson  
 Mary Kiley  
 Joanne Read  
 Eileen Siegel  
 Theresa Sorrentino

#### 1956

Margaret Buckley  
 Geralde (Sweeney) Buckley  
 Anne (Murphy) Buonopane  
 Anne (Lyons) Carty  
 Joan (McHugh) Dee  
 Priscilla (Delahunt) Douglas  
 June (Wilson) Dufficy  
 Nancy (Tracy) Fitzgerald

Virginia (Mayo) Howe  
 Jean Latham  
 Dorothy Lopes  
 Judith McGovern  
 Joan McKenna  
 Marjorie (Dickey) Quackenbush

#### 1957

Gloria Aspesi  
 Arlene Curtin  
 Anne (Lawlor) Dinapoli  
 Ann (Teehan) McAleer  
 Phyllis (Brown) McCampbell  
 Mary (Callahan) McLaughlin  
 Elizabeth (Harris) Mullins  
 Jacqueline Quinn  
 Mary (Reid) Richmond  
 Patricia (Tierney) Rotelli  
 Reine Sonnenberg  
 Elena Vine

#### 1958

Marie (Callahan) Altmeyer  
 Marylyn (Nelson) Anderson  
 Jean (Richardson) Cade  
 Joan (Barrett) Callahan  
 Helen Carlson  
 Joanne (O'Neil) Collins  
 Joan (Doull) Craig  
 Virginia (Compisi) Cusack  
 Elizabeth (Johnson) DeCoursey  
 Judith Denham  
 Susan (Henriques) Erdman  
 Saralei Fowler  
 Jane (Cahill) Fullilove  
 Joan (Lawlor) Grady  
 Therese (Montminy) Grosso  
 Carlene (Mello) Haughey  
 JoAnne (Danahy) Kellett  
 Janice (Clark) Lee  
 Karolin (Manackas) Losert  
 Joan (Lafford) McCann  
 Rosemary Morrow  
 Eileen (McDevitt) Our  
 Elinore (Dreher) Pasquill  
 Helen Paulette  
 Anne Paulsen  
 Susanna (Montalbano-McCluskey)  
 Schneider  
 Joan (Wilki) Smith

#### 1959

Maryruth (Melody) Alves  
 Jocelyn (Kinney) Baylow  
 Eleanor (Sheehan) Beauvais  
 Anne (Clancy) Botsch  
 Roberta (Cooney) Burns  
 Carol (Brandli) Cavanaugh  
 Elinor (Healy) Dare  
 Ann (Kenney) Donovan  
 Maureen (O'Brien) Fessenden  
 Helen (Burns) Finn  
 Patricia (O'Neil) Garrity  
 Maureen (McDonough) Healey  
 Shirley Kangas  
 Joan McDade

Maureen Orr  
 Ida Papalia  
 Patricia (Tighe) Quade  
 Priscilla (Freeman) Rorstrom  
 Marilyn Sicurella  
 Patricia (Nolan) Spirito  
 Patricia (Atkinson) Sullivan  
 Jane (Volpe) Thomas  
 Diane (Bernier) Whitehouse  
 Rita (Lynch) Wood  
 Barbara (Hobin) Zielinski

#### 1960

Linda (Bonni) Acone  
 Rhoda (Crooks) Berube  
 Eleanor (Shea) Bloom  
 Judith (Brownell) Collatz  
 Janet (Miller) Doe  
 Kathleen Eldredge  
 Dorie Goodlatte Walmsley  
 Mary (Moynihan) Griffin  
 Elaine Hearn  
 Julie Heron Cooney  
 Janet (Walsh) Herterick  
 Phyllis Horsefield  
 Kathleen (Magnani) Huchthausen  
 Susanne (Black) Locklin  
 Barbara (Shaw) Mullett  
 Nancy O'Herron  
 Shirley (Secord) Powell  
 Mary Prince  
 Karyl Silva  
 Judith Wyner

#### 1961

Erika (Fickeisen) Barnet  
 Joyce (Morrissey) Donohue  
 Catherine (Reardon) Drew  
 Christine (Burke) Faurot  
 Norma (MacLeod) Hagstrom  
 Olive (MacDonald) Johnston  
 Carol Larkin  
 Nancy Mazzei  
 Kathleen Mello  
 Joan Murtaugh  
 Marguerite Ryder  
 Martha (Garrahan) Scott

#### 1962

Beatrice (Morris) Biello  
 Diane (Plevock) Dipiero-Saia  
 Marie (Kramer) Dooling  
 Joan (Vodoklys) Fleming  
 Sheila Gough  
 Rosalie (Pittari) Kelleher  
 Margaret (McIntyre) King  
 Missy Margolis  
 Jean (Goranson) Muncy  
 Elizabeth O'Grady  
 Jane Quilty  
 Alice Reeley  
 Crystal Ribich  
 Margaret (Frame) Smith  
 Alice Wells

**1963**

Nancy (Bryniarski) Hooper  
Janice Kiley  
Elizabeth (Berggren) Moore  
Marilyn (Lally) Nalbandian  
Nancy Spinale  
Cathleen Stark  
Nancy Sullivan  
Dorothy Vacca  
Ellen Walker  
Irene Welch

**1964**

Marguerite Anderson  
Janice (Cetrone) Belisle  
Pamela (Cornell) Buchek  
Elizabeth Clark  
Madlyn (Pizzeri) Fafard  
Lorraine (Schwartz) Jenkins  
Margaret (Sullivan) Mahoney  
Debbora (Kramer) Marsh  
Jean McDevitt  
Carolyn (Watts) Murphy  
Meryl (Cohen) Novek  
Molly Sheriff  
Patricia Slavin  
Patricia (McMahon) Towle

**1965**

Louise (McDonald) Abbott  
Susan Anderson  
Mary (Collamore) Attridge  
Jane (Aitken) Baker  
Mary (Molloy) Benton  
Marjorie (Devlin) Berger  
Joanne (Kennedy) Collins  
Elizabeth (Hughes) Craig  
Susan Enman  
Mary Harrington  
Carol (LaFrance) Herlihy  
Janet (Woodlock) Hunt  
Carole Jubb  
Beatrice (Nugent) Malone  
Bonnie (Mee) Mayo  
Priscilla McVeigh  
Catherine Morse  
Rosanne Phelan  
Marsha Soucy  
Gertrude Strober  
Patricia (Stowe) Townsend  
Barbara (French) Tracy  
Judith (Fifield) Walsh

**1966**

Sharon (McEwan) Brennan  
Edith (Kirkland) Clooney  
Mary (Ferrick) Darcy  
Jean (Walent) Despinosa  
Patricia (Martin) Drapeau  
Kathleen (MacAdams) Duane  
Diane (Horton) Finch  
Judith (Dupuis) Fitzgerald  
Judith Gilbride

Mary (Dumalac) Hocknell  
Geraldine (Jackson) Kerdok  
Joann (Miller) McCullough  
Pamela McKenzie  
Linda (Densmore) McManus  
Arlene (Benlifer) Mindus  
Mary (Tocci) Regan  
Pamela (Purcell) Scapicchio  
Constance Schetzel  
Priscilla Trinder  
Roberta (Ward) Walsh  
Janice Welch

**1967**

Susan (Smith) Brown  
Diane (Cashman) Campbell  
Maureen (Drinon) D'Addario  
Patricia Daly  
Mary Davies  
Lucia Depamphilis  
Jill Healey  
Virginia Hogan  
Jane (Wold) Hopkinson  
Lorraine Krulikowski  
Virginia (Richer) Lafond  
Jill (Reid) Lukesh  
Sheila MacAuley  
Paula Nappi  
Suzanne Nocella  
Elizabeth Perrin  
Sandra Romanowsky  
Janina Swiacki  
Kathleen Tibbetts  
Kathleen (McDevitt) Wilde

**1968**

Carolyn Anderson  
Jean Barker  
Susan (Kenny) Barry  
Sharon (Daigle) Bloom  
Florence Bray  
Noreen (DeVito) Capotosto  
Nancy (Anthony) Chapman  
Alice Collins  
Betty (Monroe) Coutts  
Joanne (Lumpkin) Cutler  
George Duane  
Sally (Miller) Dyer  
Polly (Mitchell) Eldridge  
Karen (Whitley) Giusti  
Irene (Downs) Jahnle  
Barbara (McGuire) Keefe  
Mary (Birmingham) Killarney  
Rosemary McGovern-LoRusso  
Brenda Ponichtera  
Nancy Swiacki  
Linda (Novak) Tolland  
Theresa Vachowski  
Paul Willitts  
Helen (Stuart) Wood  
Margaret Woods  
Eletha Yeaton

**1969**

Judith (Lanza) Allardice  
Gail (Keyes) Anderson  
Claire (Arsenault) Arnold  
Karen (Chalmers) Baudin  
Alice (Loughry) Campbell  
Maureen (Murphy) Carlson  
Nancy Carr  
Irene Coates  
Susan (Deer) Conte  
Elaine (Morrison) D'Alfonso  
Patrick DeSantis  
Michael Desilets  
Catherine (Provost) Digiusto  
Judith (Zaccagnini) Flynn  
Lorna Fox  
Carol Gloski  
Margaret (Nadeau) Gray  
Frances (Pupalaigis) Hunt  
Phyllis (Vaccaro) Jordan  
Caryn Kovacs  
Nancy Lemerise  
Jane Maloney  
Marilyn (Booth) Manzella  
Susan McCrensky  
Kathleen McMahan  
Stephen Ryder  
Patricia Schuchard  
Betty St. Onge  
Susan (Johnson) Varin  
Ina (Robinson) Werman  
Barbara Zilinskas

**1970**

Vanessa (Linkiewicz) Adamowski  
Susan (Hodgerney) Andrews  
Cynthia Atkins  
Linda (Keefe) Austin  
Gail (Warren) Baldaserini  
Patricia (Doherty) Berlandi  
Jeanne (Tetreault) Corliss  
Constance Curtin  
Diane (Nicoli) Ferkler  
Kathleen Gruszka  
Jane (Bichajian) Gupta  
Kathleen (Gardner) Hebden  
Doris (Chase) Iandoli  
Eileen Kane  
Judith Kilpatrick  
Lorraine (Pandolfo) Kives  
Janie (White) Larson  
Mary Liscombe  
Richard Logan  
Elizabeth (Tettoni) Maney  
Margaret (Sperandio) McEwan  
Paulette Rio  
Christina (Reihl) Schwager  
Gary Stockbridge  
Geoffrey Tedoldi  
Kathryn (Barbieri) Tomasetti

**1971**

Carol (Hoisington) Brouwer  
Elizabeth Cahill  
Louise (Perry) Cue  
Loretta (Desantis) Cunha  
Maureen Dugan  
Patricia (Coyle) Fountain  
Deborah (Howard) Greene  
Elsa Johnson  
Mary Logan  
Pamela McGarry  
Linda (Wetherell) Nasuti  
Judith O'Neil  
Catherine (Taylor) Perry  
Pauline (Willus) Pope  
Elaine Ravelson  
Warren Richards  
Sandra Rock  
Diane (Shields) Spanos  
Sally Suomala  
Claire (Gilligan) Tremblay  
Diane (Stinson) Vassar

**1972**

Thomas Bannon  
Sharon (Rossetti) Berridge  
Susan Burak  
Paul Combe  
Kathryn Daddesio  
Terry D'Amour  
Nancy (Mathieu) Davis  
Denise (Ryan) Finnegan  
Pauline Gauthier  
Susan Huard  
Judith Kane  
Cynthia (Stokowski) Keagy  
James Keohane  
Brenda Kleinman  
Susan (Mastrogiacomio) Lalli  
Patricia Lenehan  
Pearl Libenson  
Ann Marques  
Rosemary McDonald  
Jean Morse  
Nancy Mutty  
Dennis Nasuti  
Esta (Reisman) Nickinson  
Elizabeth O'Neil  
Charles Reimer  
Lawrence Salava  
George Stone  
Barbara Sullivan  
Nancy Thompson  
Joan Trowel  
Ruth Turner  
Richard VanBuskirk  
Virginia (Mullen) Walega  
Heather Welch

**1973**

Myra (Pareman) Aframe  
Susan Albrecht  
Patricia Bell  
Joanne (Hamel) Bonner  
Rozanna Broseghini  
Beverly Bucklin  
Debra Cleveland  
Elaine (Scheffler) Coyne  
Margaret Crock  
Zarri (Hougasian) Dhembe  
Nancy (Dauplaise) Dzielenski  
Simon Essajanian  
Cynthia (Jurjunurian) Gonzalez  
Warren Griffin  
Michelle Groleau  
Eileen (Bruce) Hardaway  
Myra (Pianovich) Kovalak  
Gail (Joslin) Latvis  
Lorraine Melican  
Anne (McGuiness) Pearson  
Nancy (Grieve) Peloquin  
Kathleen Richov  
Robert Rose  
Patricia (Lynn) Smith  
Carol Smith  
James Tolland  
Joseph Tracy  
Jane Tucker  
Myrna Waltzer

**1974**

David Ball  
Gail Bernstein  
Cynthia Christ  
Glenn Coppelman  
Cheryl (Fleury) Correia  
Harold Coyle  
Kevin Currie  
Stella (MacDonald) Daigneault  
Theresa Desantis  
Frederick Dufault  
Mary (Ganley) Dufault  
Richard Ellis  
Patricia (Leon) Finan  
Christine (Dallas) Gennaro  
Janice Good  
Deborah Guarino  
Robert Haynes  
Florence (Haugh) Jones  
Karen (Spink) Lock  
Mary (Mullin) Lopez  
Michelle (Carrier) Murphy  
Barbara Post  
Deborah (Colaluca) Small  
Linda Solari  
Peter Tosches

**1975**

Linda (Thompson) Agostinelli  
 Paul Baudner  
 Diane Browne  
 Patricia Caldwell  
 Victoria (DiRenzo) Canner  
 Linda (Simonelli) Carr  
 Patricia Condon  
 Timothy Cornely  
 Linda (Johnson) Daley  
 Doris Dermarderosian  
 Ruth Fay  
 Mary (Macklin) Ferguson  
 Patricia (Bray) Fryatt  
 Ellen (Weinstein) Funk  
 Joyce (Donahue) Gianfelice  
 Elizabeth Gibbons  
 John Graham  
 Janet (Weinheimer) Gulezian  
 Marcia (Fisher) Harrington  
 Diane (West) Jackson  
 Ann (DelGreco) King  
 Roberta Kwiatkowski  
 Janice Liljestrand  
 Martin Moran  
 Mary O'Neill  
 Donald Papa  
 Elaine Payne  
 Diana Phillips  
 Nancy (Shea) Purpura  
 Maryellen (Dudley) Rancourt  
 Deborah Robbins  
 George Stelljes, Jr.  
 Janice (Tripp) Stelljes  
 Mary Taft  
 Carole (Thomas) Todisco  
 Deborah (Kane) Tomell  
 Margaret Turco  
 Dennis Willis

**1976**

Janice Acquafresca  
 Lisa Backman  
 Anne (Czarnetzki) Balzarini  
 Rachel (Giargiari) Bartlett  
 Paula Bartosiak  
 Virginia (Bartlett) Conway  
 Fred Daley  
 Karen (Guglielmo) Drummond  
 Linda Feldman  
 Ava (Portman) Grimason  
 Reverend Hamilton  
 Stephen Herring  
 Barbara (Barron) Kaligian  
 Laurie Lynch  
 Faith Madzar  
 Joanne (Lamacchia) McCarter  
 Barbara McCorkindale  
 Deborah McQuillan  
 Jean Moroney  
 Donna Paruti  
 Diane (Congdon) Piechowski  
 Richard Policella  
 Margret (Toler) Richard  
 Mildred Rely  
 Rita Schmid

Lee (Cormay) Smith  
 Elin Soderholm  
 Karen Taylor  
 Umberto Tosti  
 Marjorie (Fletcher) Touzjian  
 Mercedes Tyler  
 Lauren Underhill  
 Lora Warren

**1977**

Karen (Paulino) Baer  
 Ann (Edwards) Burchill  
 Paul Carchedi  
 Patricia (Ferreri) Coan  
 Kathleen (Nunas) Danca  
 Helen (Crowley) Evers  
 Janice (Weiner) Fellner  
 Catherine (Magee) Flaherty  
 Jean (Kelly) Fortier  
 Deborah (Rosenburg) Gamari  
 Joanne Gray  
 Donna (Madanjian) Griswold  
 Margaret (Brodeur) Guardiani  
 Mark Haranas  
 Jane (Edgington) Higgins  
 Joan (Czarnowski) Hill  
 Mary-Ann Hornbaker  
 Peter Iannuzzo  
 Susan Larracey  
 William Lennon  
 Elaine (Ryan) Lovett  
 Deborah (Gallagher) McIntosh  
 Deborah Moriarty  
 David Morrisette  
 Karen Navaroli  
 Annette (Martineau) O'Brien  
 Janet Page  
 Donna Parandes O'Neil  
 Anthony Patti  
 James Redfearn  
 Anne (MacPhee) Rogers  
 Joseph Sano  
 Nancy Sullivan  
 Peter Tokarz  
 Robin Welch  
 Anita Zollo

**1978**

Dennis Alves  
 Lauren (Cavanaugh) Alves  
 Susan (Adam) Benard  
 Pierrette Birge  
 Joseph Borrelli  
 Judith Caplan  
 Jill Carroll  
 Roberta (Garcia) Collins  
 Elizabeth Comstock  
 Kathleen Cotter  
 Lillian (Kurker) Cronin  
 Michael Crosson  
 Mary (Cusick) Danahy  
 Lois (Danin) Dillemath  
 Janet (Sumski) Diprisco  
 Dorothy Verdi  
 Lynda (Alemian) Duplissee  
 Grace Franco

Cynthia (Hubley) Galuska  
 Denis Goneau  
 Nancy Hall  
 William Higgins  
 Clare (O'Connor) Hurley  
 Domenic Jannetti  
 Rosemary Kaupp  
 Michael Keohane  
 Kathryn Kidd  
 Donna (Carneiro) Korbel  
 Elaine Lang  
 Marie McGah  
 Walter Mills  
 Eileen (Tosney) Mills  
 Nancy (Buzzell) Murphy  
 Kathleen Nawn  
 James Pidacks  
 Thomas Sartori  
 Melinda (Shippee) Shebell  
 Janet (Vartanian) Sheffield  
 Monica Skerry  
 Kyriaki Stefano  
 Regina Stoker  
 Maureen Tivnan  
 Mary Toney  
 Caryl Walsh  
 Henry Walsh

**1979**

Constance (Anderson) Alexander  
 John Andreola  
 Vicky Benedek  
 Mary (Sheedy) Benoit  
 Jeanne Buccigross  
 Candace Combe  
 Catherine Crohan  
 Denise (Hardy) Daignault  
 Hope Damon  
 Timothy Danahy  
 Cheryl Demeo  
 Patricia Doherty  
 Beatrice Goudey  
 Lee Hoffstein  
 Donna (Pelletier) Jarvis  
 Neil Kelley  
 Paula (Cardiff) Leporati  
 Julie-Ann (Marston) Lombardi  
 Kevin Maines  
 Jeanne Mbagwu  
 Diane O'Shaughnessy  
 Elizabeth (Small) Palladino  
 Joseph Pavone  
 Virginia Petronio  
 Elizabeth (Sheehan) Pomfred  
 Elizabeth Quigley  
 Claire Ramsbottom  
 Janice (Call) Rosado  
 Cynthia Sarapas  
 Dianne Sarault  
 Donald Schwartz  
 Gary Shultz  
 Joanne (Wright) Simmons  
 Jane Simpson  
 Gerard Supple  
 Holly Veum

Christine (Kennally) Weithman  
 Judith White-Orlando  
 William Wiggin

**1980**

Beth (Medeiros) Bell  
 Cindy (Ockerbloom) Byers  
 Martha (Gallant) Crimmins  
 Ronald Cryan  
 Virginia Cumming  
 Rebecca (Lindberg) Dubowik  
 Michael Fabbri  
 Robert German  
 Linnea Hallberg  
 Randy Jacques  
 Gregory Livingstone  
 Kathryn Lucey  
 Michelle Lucier  
 Anthony McCook  
 Bruce McNulty  
 Joan Metcalfe  
 Karen Murtagh  
 Diana Nunnaley  
 Daniel O'Brien  
 Robert Pulster  
 Deborah Sadzewicz  
 Patricia Thomas  
 Wayne Twombly

**1981**

Linda Annino  
 Diane Armstrong  
 Carol Burns  
 Daniel Ciullo  
 Deborah (Weathers) Desmond  
 Rosemarie (Bolduc) Doolin  
 Anne Drolet  
 Corinne Epstein  
 Erminia Errico  
 Susan Flaherty  
 Cindy Gertsen  
 Marianne (Lareau) Gesner  
 Diane (Doody) Granger  
 Mary (Regan) Larkin  
 Jo Anne (Horlick) Lemenager  
 Desmond McCarthy  
 John McGinnis  
 Mary Ellen Rivet  
 Nancy Sitta  
 Mark Sorenson  
 Ellen Weber  
 Gaynelle Weiss

**1982**

Joan Cannon  
 Paul DelVecchio  
 Eileen (Francis) DesRosiers  
 Ernest Fleming  
 Barbara Gardner  
 Victoria Harding  
 Maureen (Kelly) Hird  
 Lianne Manzella  
 Janet Murray  
 Julie (Siler) Olander  
 Philip Quinn  
 Maria Strattner  
 Frederick Thompson

**1983**

Lisa (Leaf) Dean  
 Mary (Stack) Donofrio  
 Sheila (Eastman) Jeffrey  
 Deborah (Buteyn) Lamplough  
 Barbara (Waite) LeDuc  
 Carol McAndrew  
 Donna Oliver  
 Robert Richards  
 Mark Rizzo  
 Nancy Romano  
 Maureen Ryan  
 Dianne (Mulvaney) Stearns  
 Caroline Vogel



**UNDERGRADUATE  
 PARTICIPATING CLASSES**  
 -----  
 PERCENT of CLASS PARTICIPATION  
 -----

1945	40.62%
1941	28.57%
1958	26.47%
1942	23.80%
1943	23.07%
1959	22.72%
1952	22.36%
1937	22.22%
1949	21.66%
1950	21.56%

**1984**

Nancy (Wolkovich) Atchue  
 Mary (Walsh) Bagley  
 Brian Bonazzoli  
 Janet Bricault  
 Robert Julio  
 Gloria Maroni  
 Stephen Miner  
 Ann-Marie Morse  
 Mary Parcher  
 Doreen Paris  
 Susan Patti  
 Dianne Perini  
 Donna (Daigneault) Peter  
 Susan Spendley  
 Victoria Tang  
 Carolyn Toohey  
 Joanna Zanchi

**1985**

Elizabeth (Leone) Adams  
 Marcia Bachman  
 Robert Berube  
 Kevin Brennan  
 Mark Cohen  
 Janet Connolly  
 Elizabeth (Freedman) Doherty  
 Brian Engel  
 Keith Faulkner  
 Nancy Gardner  
 Mary Hodgdon-Manning  
 Susan (Montcalm) Kinsella  
 Marie Leuchte  
 Patricia Levesque  
 Keith MacPherson  
 Lee McElroy  
 Karen McGrail  
 Judith Moore  
 Steven Oakes  
 Christopher Previte

**1986**

Inger Anderson  
 Diane (Buonopane) Bernazzani  
 Michael Bordogna

Catherine Fitzgerald  
 Karen Fleming-Brooks  
 Irene (Reimer) Foster  
 Christopher (Dwyer) Horblit  
 Bridget Kane  
 Kelly Leydon  
 Alan Loftus  
 John McNamara  
 Cynthia Moulton  
 Przemek Skoskiewicz  
 Katherine Stamper  
 David Thompson  
 Anne Ziobrowski

**1988**

Timothy Baker  
 Scott Cashman  
 John McLaren  
 Charles Meninno  
 Tara Murphy  
 Michael Roppolo  
 Bernadette Shaw  
 Gina (Zaccaria) Shea  
 Brendan St. George  
 Donna (Henderson) Terestre  
 Tracey Welch

**1990**

Dale Bowlin  
 Susanne (McGinnis) Conley  
 Daniel Dowd  
 Diane (Tamagno) Elhilow  
 John Greaney  
 Paul Guzzi  
 Lynne Harlow  
 Deborah (McNeil) Kenney  
 Christopher Maher  
 Dana Neshe  
 Francis Perfetuo  
 Lewis Piantedosi  
 Kristen (Holmes) Riddell  
 Peter Salenius  
 Deborah Schreiber  
 Kimberly Springston  
 Catherine (Mantegani) Swanson

**1991**

Susan (Westcott) Alessandri  
 Kimberley (Coffre) Beattie  
 Joanne Covell  
 John Donna  
 Linda Fitzpatrick  
 Kevin Gosnell

Karen White  
 Michelle Zamora

**1993**

Nicole Billet  
 Linda Hiort  
 Tracy Landry  
 Robert Lane  
 Peter Ricci

**1994**

Maureen Barila  
 Sharon Hollinden  
 Ian Kurtinitis  
 Jeffrey Megar  
 Charles Scott  
 Carol Sullivan  
 Meredith Twombly  
 Dana Vecchione  
 Robbin (Vipond) Woods

**1995**

Mary Ellen (Iagulli) Castagno  
 Karen (Cole) Cicchetti  
 Marynilda (Vega) Gaetan  
 Todd Galusha  
 Scott Gauthier

Amy (Tolman) Phoenix  
 Veda Quinn  
 Cheri (Petersen) Salenius  
 Valeria Sarosky  
 Laura Tierney  
 Eric Vaughan  
 Kimberly VanWinkle

**1997**

Scot Alexander  
 Laura Beals  
 Elsie (Macaulay) Bockwinkel  
 Carla Daher  
 Faith Demarinis  
 Priscilla (Woods-Bartlett) Galvin  
 Patrick Gamere  
 Janice (Peterson) Harvey  
 David Joyner  
 Jessica Lewis  
 Joseph McConnon  
 Susan Murphy  
 Falguni Patel  
 Patricia Texeira

# Invest in the Future

**MAKE A GIFT TODAY**

The future of the University and its students is literally made possible by private support, which provides the financial foundation for a quality educational experience. This means every gift, no matter the size, has an immediate impact on campus. Moreover, this means every gift helps shape the future of Framingham State.

To make a gift online visit [www.framingham.edu/give](http://www.framingham.edu/give) or call 508-626-4012

Cynthia Crohan  
 John Flinter  
 Karen Gibson  
 Maria Hays  
 Maureen Krol  
 Duc Le  
 Joseph Lundy  
 Hazel Miele  
 Valerie Miller  
 Mavis O'Leary  
 Louis Sandman  
 Lori (Colletto) Saslav  
 Edward Sybertz  
 Rosemary Weich

**1987**

Steven Belair  
 Dianna (DiCastro) Breneman  
 Anne (Ireland) Brisbois  
 Andrew Chaves  
 Burton Choiniski  
 Barbara Crowley  
 Colleen (Riley) Day  
 Eric Dragsbaek

**1989**

Gail (Garbarino) Bourque  
 Caroline Breen  
 Carl Buck  
 Carol Carew  
 Robert Cass  
 Kenneth Decoste  
 Colleen (Moore) Delaney  
 Jeffrey Dyer  
 Maureen (Kelly) Frangioso  
 Anne (Tompkins) Garcia-Meitin  
 Ellen Laquidara-Meehan  
 Ann Mignosa  
 Melinda Rea  
 Linda Rezzuti  
 Elaine Richard  
 Paulette Sherrill  
 Judith Spivak  
 Catherine Treanor  
 Brenda Weiser  
 Teresa Zuckerman

Ann May  
 Kim McGuckin  
 Charlene Miller  
 Catherine Orellana  
 Jennafer Souders-Gauthier  
 Darra (Gleason) Sweetser  
 Charles Waitt  
 Marc White  
 Cara Zwicker

**1992**

Steven Baldelli  
 Nancy Bradley  
 Dena Brayson  
 Carlene Codling  
 Marlene (Lalli) Coleman  
 Donald Ledbury  
 Deborah McMakin  
 Kenneth Morey  
 Eve Perfetuo  
 Sandra Piccolo-Savage  
 Kathleen Savage  
 Eli Valk  
 Claire Wheeler Pond

Kristen (Mara) Hidalgo  
 Lois Hutchings  
 Jennifer (Williams) Lawless  
 Anne (Kloczkowski) Mangano  
 Sheila (Murphy) Miller  
 Dori Pedrol  
 Carlos Sanchez  
 Bethany Simoes

**1996**

John Andrews  
 Kristie (Barrett) Barry  
 Meg Byron  
 Gwen Collins  
 Robin (East) Crown  
 Ralph Eddy  
 Paula Forcier  
 Jill (Stonebraker) Gaudet  
 Brenda Goins-Wallace  
 Denise (Arsenault) Hobby  
 Dawn Jacques  
 Michelle Kirrane  
 Elaine Martin  
 Elizabeth Painter

**1998**

John Bonney  
 Shayna Eddy  
 Michael Fagone  
 Jennifer (Lickver) Giddings  
 Kerrie Harper  
 Barbara Leboff  
 Beverly Niit  
 Joseph Palowich  
 Megan Tolland

**1999**

Paul DeCesare  
 Karen DeMartino  
 Scott Fraser  
 Alexandra Grebenyuk  
 Dany Guillemette  
 Cheryl Loring  
 Jaimee Nelsen  
 Katherine Palmer  
 Sangeta Pradhan  
 Douglas Scott  
 Lisa (Walmsley) Slavin  
 David Stubbart

**2000**

Allison Biron  
Kathryn (Cotter) Brown  
Annmarie (Vachon) Carey  
Charles Dufault  
Lori (Seney) Jayko  
Nicholas LoCoco  
Sahal Osman  
Sharon Summers

Enzo Surin  
Michael Thum  
Laura Valk  
Julia Varriale

**2001**

James Folk  
John Haddigan  
Jacqueline (Bowes) Koch  
Jonathan Lent  
Sean Murphy  
Amy Padden

**2002**

June Bixby  
Melissa Bonofilio  
Suzanne (Thornton) Henricksen  
Julie-Ann (Mina) Horrigan  
Catherine McHugh  
Sarah Schofield  
Caitlin Slavin  
Matthew Stockbridge  
Robert Walmsley

**2003**

Marissa (Jones) Carvelli  
Heather Conlan  
Mark D'Agostino  
Hang Le  
Annmarie McKinley  
Cathleen Moore  
Jan-Marie Murray

**2004**

Paul Bolles  
Travis Elibox  
Shawn Hanks  
Joan Sacco

**2005**

Elizabeth Daly  
Kati Dewar  
Rosalind Forber  
George Mohn  
Jose Moreno  
Erin O'Leary  
Edward Zullo

**2006**

Ramakrishna Iyer  
William McGoldrick  
Michael Melia  
Betsy Morris  
Angela Quinty  
Ian Rugg  
Jorge Torres  
Jessica (Staniunas) Yttredahl

**2007**

Joseph Gould  
Joan Kulman  
Susan Lasky  
Christine McMahon  
Jenna Noel-Grinshleyn  
Diane Reardon  
Ann Tierney  
Pamula Zicko

**2008**

Brigid Dailey  
Matthew Dernoga  
Jennifer Mazzei  
Michael Murphy  
James Murray  
Dawn Ross  
Karen Woo

**2009**

Lauren Arsenault  
Sean Boudreau  
Kaitlyn DePonte  
Rachel Devlin  
Allison Hart  
Andrea Morgan  
Rachel Sobol  
Kym Welch

**2010**

Jaime Carvajal  
Brett Casavant  
Ryan Ford  
Kathleen Hart  
Marc Massarotti  
Steven Tramontozzi

**2011**

Brendan Carter  
Allison Chisholm  
Candace Franco  
Dana Lemelin  
Aesha Patel  
John Sheehan  
Joseph Sheehan  
Sarah-Anne Lubowicki

**GRADUATE ALUMNI***By Class Year***1962**

James Halliday

**1963**

David Tenney

**1964**

Paul MacArthur  
James O'Connell

**1965**

Lourdes Javier  
Anne Pratt

**1966**

James Argir  
Paul Carbone  
Jane Harvey

**1967**

Mary Morrison

**1969**

Carol (MacCready) Hazen  
Stephen Ryder  
Mary (Aiken) Tribe

**1970**

Paul Hickey

**1971**

Eileen (Zendali) Belloli

**1972**

Douglas Shepard

**1973**

Robert Berardi  
Edith Getchell  
Ellen Miller

**1974**

Elizabeth (Wade) Drum  
John Lent  
Bernard Pohl  
Mary Riddell  
Joyce Smith  
David Sveden  
Ilene Wolfman

**1975**

John Cashman  
Paul Colbert  
Harold Dickert  
Doreen Feldhouse  
Andrea Hallion  
Robert Heaton  
Phyllis Webb  
Alice Wells

**1976**

Anita Danker  
Judith Fader  
Devalie Gibbons  
Patricia Luoto  
Elizabeth (Wilson) Martin  
Ellen Oasis  
Edna Perlmutter  
Margaret Reed  
Marilyn Schwab  
Helen Velie  
John Welch

**1977**

Susan Bruce  
Elizabeth LeBaron  
Sally Logan

**1978**

John Barry  
Edgar Boucher  
Cheryl Rowe  
Marion Wollmeringer

**1979**

Eugenia Gomes  
Gerry Marcus  
Dorothea Rourke

**1980**

Ruth Delmonico  
Sue (Miller) Foster  
Margaret Gaughan  
Nancy (Keith) Maki  
Joan Miceli

**1981**

Arlene Argir  
Nancy Ford  
Sandra Hegstad  
Geraldine Madigan  
Anne McNeece  
Florence (Lee) Yuan

**1982**

Christine (Barrett) Collins  
Bonita Hansberry  
Barbara Robinson

**1983**

Mary Alessi  
Debra Chiacu  
Susan (Hobbs) Cowmeadow  
Herbert Lannon  
James Lorenzen  
Garrett Niland  
Marcella Theeman

**1984**

Elizabeth (Laucks) Brock  
Anna Bush  
Kathleen Gould  
Mary-Lee Mahoney-Emerson

**1985**

Mary Ellen Swydan

**1986**

Judith (Crowley) Bolick  
Susan (Keegan) Boyd  
Carol Lees  
Miriam Wilson

**1987**

Brian Caspersen  
Paula Connolly  
Melinda (Minsky) Torbin

**1988**

David Augustinho  
Nicholas DiIeso  
Alvin Shope

**1989**

Philip Quillard  
Lisa Vandusen

**1990**

Carole Gagnon  
Robert Graceffa  
June Hunter  
Karen (Macarthy) Ogorzalek  
John Steacie

**1991**

Dorothy Keeney  
Mary Mangan  
Christine Robbins  
James Roman  
Paula Snyder

**1992**

Wellman Bartlett  
Elizabeth Griffin  
Beverly Myers  
Anne Tobin

**1993**

Walter Davis  
Steven Lutch

**1994**

Kathleen (Murphy) Bernegger  
Eileen Cerne  
Patricia D'Amour  
Bonnie Mitchell  
Victoria Waterbury

**1995**

Anne Danahy  
Catherine Hanley  
Renee Merolli  
Anne Nichols

**1996**

David Drucker  
Merry Glosband  
Jacqueline McGrory-Zeledon

**1997**

Joe Blackburn  
Jennifer Mosher  
Jane Stabile  
Cynthia Wackerbarth  
Raymond West  
Rhys Wyman

**1998**

Muhammed Attiany  
Sandra Comastra  
Janis Kahn

**1999**

Gloria Bell  
Lisa Casey  
Linda DiPasqua

**2000**

Tim Berringer  
Kristen Mogensen  
Linda Morse  
Laura Slaney

**2001**

Stephen Goodwin  
Nancy Larsen  
Marian MacPherson  
Christine Mosher  
Christine Williams  
Robert Wyman

**2002**

Kathleen Carey  
Patrick Conley  
Kimberly Conner  
Wendy Hanlon  
Maryann Hunter  
Margaret O'Neill  
Barbara Pascoe  
Mary Plouffe  
Greta Stone

**2003**

Stephen Capeless  
Anita Probst  
Christine Randall  
Peter Regan

**2006**

Rosemary Quirk

**2009**

Joseph DiCarlo  
Linda Walters

**2010**

Donna Bond  
Mary Ann Case  
Anne Huntington  
Debra Ragosta  
Deborah Saltzman

**2011**

Amy (Iammarino) Luoto

**2012**

Jacqueline Ryan

**GIFTS IN MEMORY****JAMES AND MARGARET AKILLIAN**

John C. Graham '75

**JACK BALBEN '75**

John C. Graham '75

**DR. DOUGLAS BLOOMQUIST**

Paula Bloomquist  
Harold Kiess

**MARY BURNS**

Judith L. Cohen  
Paul and Katherine Gerke  
Marilyn M. Harter  
Joan E. Horrigan  
Patricia Lawson  
Anne Levine  
Bonnie D. Mitchell '94  
Mary E. Murphy  
Gail Nemic  
Dr. Mary L. O'Connor '43  
Michael Rubino

**RYAN CHAVALIER '03**

James '08 and  
Jan-Marie Murray '03

**DR. ARTHUR CHAVES**

Andrew M. '87 and Robin Chaves

**ASHLEY DONAHUE**

Michael R. Britt

**MIRIAM FELDMAN**

Beverly Butler

**SALLY PALMER FIELD '45**

Virginia M. Farrell '45  
Phyllis (Hamilton) Frechette '45  
Leonor M. Luiz '45

**DR. GARY R. FREDRICKSON**

Louise Balboni  
Nancy Goedecke  
William and Claire Hallisey  
Christopher and Claire Hurley  
Norman Wironen

**MARY FRIEL**

Linnea M. Hallberg '80

**NANCY HERON '67**

Jill D. Healey '67  
Paula M. Nappi '67

**DR. CONSTANCE B. JORDAN**

Dr. Kirk and Lorraine H. Jordan

**MILDRED KINNARNEY**

John C. Eckel  
Jane Monti  
Rocco and Carlene Porretta  
Jason Yung

**MARY THORN MACDONALD '65**

Elizabeth (Hughes) Craig '65

**KATHLEEN MAGUIRE '51**

Thomas G. Cody

**BRIAN MARTINUZZI**

Mr. and Mrs. Balish  
Mr. and Mrs. Brake  
Gill and Mary Lou Buford  
Tom and Cindy Burger  
Margaret Burger  
Mike and Linda Carter  
Mr. and Mrs. Gerard Cavanaugh  
Kent and Theresa Contreras  
Marjorie Danish  
John and Janet Dillon  
Jo Evangelista  
Joseph and Maureen Gagliano  
Sharon Gibbons  
Stephen and Jeanne Gierak  
John and Kathy Janssen  
Frank Johnson  
Adam T. Johnson  
Kenneth and Dorothy Johnson  
Shirley Johnson  
Ellen Kalt  
Mary Jane Klebba  
Alger Luckham  
Theresa Lynch  
Kelly W. Machenry  
Neil and Maria Martinuzzi  
Elaine O'Neill  
Robert Sager  
Beverly Suchenek  
Kimberly Weiner  
Mr. and Mrs. Williams  
Mary Wright  
Louie and Paula Zasuwa  
Stanley and Kathy Zasuwa  
Theresa Zasuwa  
Anthony and Mary Zasuwa  
Gary and Marilyn Zasuwa

**YOICHI MAZOWA**

James F. Kalohn  
John C. Kalohn  
Doris A. Kalohn

**ELEANOR HARRINGTON**

ROLLINS '45  
Clare Forbes '45  
Rose Mary (Hoye) McCarthy '45  
Mary (Saulnier) Potter '45

**BILLY SIMS '75**

John C. Graham '75

**DONNA SMITH**

Nancy Lankford

**SOLANGE SAULNIER SULLIVAN '48**

Doris Granger '48

**GIFTS IN HONOR****DR. NANCY BOWDEN**

Deborah (Black) Hefner '78

**DR. JOYCE (BLOCK) LAZARUS**

Kathleen (Nunas) Danca '77

**DR. MARGUERITE MAHLER**

Katherine L. Palmer '99

**RITA MCLAUGHLIN MCCABE**

Geoffrey A. Tedoldi '70

**JANE LONHER BASTOW MUSGRAVE**

Nancie Entenmann

**AUDREY SEYFERRT**

Janis B. Kahn '98

**DR. RICHARD SIGNES**

Robin (East) Crown '96  
Brigid M. Dailey '08

**MATCHING GIFTS COMPANIES**

AIG Foundation  
Amica Companies Foundation  
Dell Employee Giving Program  
Fidelity Foundation  
FM Global Foundation  
GE Foundation  
IBM Corporation Foundation  
Macy's Foundation  
Motorola Foundation  
NStar Electric Corporation  
Pfizer  
REI Foundation  
SC Johnson Foundation  
The Clorox Company Foundation  
UNUM Foundation  
Verizon Foundation

**CORPORATIONS, FOUNDATIONS & ORGANIZATION**

168 Main St LLC  
1st Ad Specialties  
Anastas Lock & Safe Company  
Atent for Rent, Inc.  
Brochu Bros., Inc.  
Carroll Advertising Company, Inc.  
Coca Cola  
Commercial Construction Consulting, Inc.  
Craig-Hallum Capital Group, LLC  
D.C. Sparrow, Inc.  
Framingham Co-operative Bank  
Charitable Foundation  
Future Technologies Group, Inc.  
GiGMark, LLC.  
Grasseschi Plumbing & Heating, Inc.  
Haynes, Lieneck, and Smith, Inc.  
Imperial Ford Corporation  
Independent Association of Framingham State Alumni  
It's All About Me, Inc.  
Kane Engineering  
Metrowest Medical Center  
Pfeuffer/Richardson P.C. Architects  
Reeves Company, Inc.  
Sodexo, Inc. & Affiliates  
T & K Asphalt Services, Inc.  
The Van Liew Family Foundation  
Tracker Systems  
Wing Press  
WOM Communications, LLC.  
Zahner Equipment

**GRANTS & SPONSORED PROGRAMS**

Bose Corporation  
Boston College  
Davis Educational Foundation  
Framingham Union Aid Association  
Highland Street Foundation  
Impact Framingham  
LEF New England  
Massachusetts Biotechnology Education Foundation  
Massachusetts Service Alliance  
MetroWest Health Foundation  
Middlesex Savings Charitable Foundation  
Arthur Ashley Williams Foundation  
Wyncote Foundation

**PARENTS & FRIENDS**

Sarah Agabian  
Peter J. Andolino  
Aron Aronian  
Louise Balboni  
Mr. and Mrs. Balish  
Laura Bascom  
Deborah Bitsoli  
Paula F. Bloomquist  
Robert P. Bonnevie  
Raymond P. Boulanger  
Lennie Bowen  
Leonard T. Bowen  
Lawrence P. Boyd  
Doreen Bradbury  
Mr. and Mrs. Brake  
Susan Brim  
Michael R. Britt  
James Brochu  
Judy Brodtkin  
Gill and Mary Lou Buford  
Tom and Cindy Burger  
Margaret Burger  
Beverly Butler  
Paul Byrd  
Kathryn Callahan  
Mike and Linda Carter  
Gerard Cavanaugh  
David J. Cella  
Christopher C. Chiu  
Marshall Clyburn  
Thomas G. Cody  
Judith L. Cohen  
Kent and Theresa Contreras  
Anthony Cristello  
Frank Cristello  
Marjorie Danish  
William David  
James Depalma  
John and Janet Dillon  
Denis Donoghue  
Kelley Ann Donovan  
Philip M. Dooher  
Mary Driscoll  
Howard Eckel  
John C. Eckel  
James D. Eng  
Nancie Entenmann  
Jo Evangelista  
Dorothea Everett  
Keith Ewing  
Alan G. Feldman  
Kathleen Ferguson-Mormul  
Henry Fitzgerald  
Helen A. Fitzgerald  
Joseph N. Flanagan  
Joseph and Maureen Gagliano  
Eleanor M. Garlisi  
Paul and Katherine Gerke  
George Gerrish  
Sharon Gibbons  
Stephen and Jeanne Gierak  
Nancy Goedecke  
Christine Goscola  
Andrew Graham



Richard Gregory  
William and Claire Hallisey  
John and Linda Hampton  
Marilyn M. Harter  
Helen L. Heineman  
Nancy J. Hodsdon  
Rusten Hogness  
Joan E. Horrigan  
William E. Howland  
Ann T. Hunt  
Christopher and Claire Hurley  
John and Kathy Janssen  
Frank Johnson  
Adam T. Johnson  
Kenneth and Dorothy Johnson  
Shirley Johnson  
Kirk Jordan  
Doris A. Kalohn  
John C. Kalohn  
James F. Kalohn  
Ellen Kalt  
Elizabeth Kane  
Yenovk H. Karagoezian  
Hank Kasbarian  
Richard Keats  
Margaret C. Kelley  
Harold O. Kiess  
Jeffrey B. Killian  
Thomas and Sharon Kilpatrick  
John and Judy C. Klaas  
Mary Jane Klebba  
Victor Koytikh  
Gary H. Kreppl  
Nancy Lankford  
Mike Lawler  
Patricia Lawson  
Renee J. Leonard  
Robert J. Lepardo Jr.  
Anne Levine  
Joan Lewis  
Richard and Jane Lombard  
Thomas B. Longtine  
Alger Luckham  
Melissa M. Luo  
Theresa Lynch  
Kelly W. Machenry  
Richard Mackey  
Leo K. Mainini  
Jeanne M. Maloney  
Lawrence C. Manning  
Robert Martin  
Neil and Maria Martinuzzi  
James McCloud  
George McCormack  
Marie M. McKinney  
Robert T. McSweeney  
Catherine S. Michael  
Jane Monti  
William W. Moreland  
Mary E. Murphy  
Mary Murphy  
Gail Nemic  
Patricia M. O'Brien  
Lynn B. Olson  
Elaine O'Neill

Jeanne Ottaviani  
Paul C. Pacheco  
Charles R. Parent  
Hope J. Parretti-Everett  
Albertha Paul  
Paul D. Peterson  
Michael Petrishen  
Janet Pfeiffer  
Patricia Piazza  
Mary and Frank Pirrello  
Alice L. Pomponio  
Rocco and Carlene Porretta  
Margaret H. Potter  
Helen Powell  
Cory Primm  
Fernando Quezada  
Daniella Reichstetter  
Todd Roberts  
Peter D. Rosenbaum  
Michael Rubino  
Karen Rundlett  
Stephen and Diane Russo  
Dorothy Ruzzo  
Robert Sager  
Edward H. Sahagian  
Kendra D. Sampson  
Lori Scott  
Mary H. Shea  
Gail Shew  
Janet Shonak  
Donald F. Smith  
Barbara St. George  
Margaret B. Storch  
Beverly Suchenek  
Joseph Sugrue  
Kevin Sullivan  
Steve Swets  
Kevin Thurston  
William Tobin  
Anthony Tocci  
Joseph Vajda  
Heidi Van Zee  
Debra von Taube  
Roger Vorce  
Stella A. Wagner  
Jamie Walker  
Kimberly Weiner  
M. B. Werner  
Robert A. Wheeler  
Betsey S. Whitman  
Karen Williams  
Mr. and Mrs. Williams  
Gary V. Wing  
Robert A. Winrow  
Norman Wironen  
Cecelia A. Wohler  
Paul Wojdag  
Mary Wright  
Jason Yung  
Louie and Paula Zasuwa  
Stanley and Kathy Zasuwa  
Theresa Zasuwa  
Anthony and Mary Zasuwa  
Gary and Marilyn Zasuwa

#### FACULTY & STAFF

Elaine V. Beilin  
Brian L. Bishop  
Kathleen Bohner  
Patricia Bossange  
Silvy A. Brookby  
Kathleen M. Brosnihan  
Margaret M. Charbonnier  
Robert C. Chen  
Rita P. Colucci  
Susanne H. (McGinnis) Conley '90  
Maureen Cupoli  
Elizabeth M. Daly '05, '12  
Maureen E. Dunne  
Shayna M. Eddy '98, '02  
Ralph G. Eddy '96  
H. Warren Fairbanks  
Michelle C. Fallon  
Timothy J. and  
Nancy A. Flanagan  
James Flynn  
Irene M. (Reimer) Foster '87, '88  
Shin Freedman  
Joseph and Maureen Gagliano  
Robert B. Grant  
Scott B. Greenberg  
Christopher W. Gregory  
Eric P. Gustafson  
Mary Haley  
Dale M. Hamel  
Lillian Holden  
Jon Huibregtse and  
Ellen Zimmerman  
Kelly A. Kolodny  
Patrick and Kathleen Laughran  
Jonathan T. Lee  
Mary E. Liscombe '70  
Diane L. Lowe  
Patricia K. Luoto '76  
Amy L. Luoto '11  
John M. Macuga  
Dan Magazu  
Marguerite A. Mahler  
Desmond F. McCarthy '81  
Deborah A. McMakin '92  
Erin Nechipurenko  
P. Bradley Nutting  
Dori A. Pedroli '95, '05  
Maria Quiray  
Nina Ricci  
Robin S. Robinson  
Dawn Ross '08  
Janet B. Schwartz  
Timothy J. Slocum  
Melinda Stoops  
Dr. Linda Vaden-Goad  
Mark A. Veligor  
Robert L. Walmsley '02

# All-Alumni Reunion & Commencement Weekend

## MAY 17-19

Celebrate Yesterday, Today and Tomorrow with fellow Framingham State alumni and friends during an activity-packed weekend

Contact the Office of Development & Alumni Relations to Register or for more information on All-Alumni Reunion & Commencement Weekend:

**CALL** 508-626-4687

**EMAIL** [alumni@framingham.edu](mailto:alumni@framingham.edu)

#### ALL-ALUMNI REUNION & COMMENCEMENT WEEKEND

## Yes! I will attend!

Cut and mail reply card to:



**Office of Development  
and Alumni Relations**

Framingham State University  
100 State Street, PO Box 9101  
Framingham, MA 01701-9101

*A member of the Development & Alumni Relations staff will contact you to confirm your attendance and event participation specifics.*

ALL-ALUMNI REUNION &amp; COMMENCEMENT WEEKEND

# Schedule of Events

FRIDAY

17

Reunion Welcome Reception  
Cocktail Reception Followed by Dinner  
Concert & Dessert on the North  
Hall Green

SATURDAY

18

All-Alumni Breakfast  
Campus Tours  
All-Alumni Luncheon & Achievement  
Awards Presentation  
Chocolate and Wine Reception  
Undergraduate Admission Welcome  
Center Open for Hospitality Suite  
Remembrance Ceremony  
Golden Anniversary Dinner

SUNDAY

19

Luncheon for Alumni Participating  
in Commencement  
Alumni Robing  
Undergraduate Commencement  
Ceremony

## ALL-ALUMNI REUNION & COMMENCEMENT WEEKEND RSVP CARD

FIRST NAME \_\_\_\_\_

MAIDEN NAME \_\_\_\_\_

LAST NAME \_\_\_\_\_

ADDRESS \_\_\_\_\_

CITY, STATE, ZIP \_\_\_\_\_

PHONE \_\_\_\_\_

EMAIL ADDRESS \_\_\_\_\_

YEAR OF GRADUATION \_\_\_\_\_

# 2013 Alumni Achievement Awards

Framingham State University is pleased to recognize the 2013 Alumni Achievement Award winners. Each of the winners will be honored during All-Alumni Commencement & Reunion Weekend, May 17-19, 2013.

## Janina Swiacki '67 and Nancy Swiacki '68

### DISTINGUISHED ALUMNI ACHIEVEMENT AWARD

Janina and Nancy have spent their entire adult lives as teachers and community advocates. Janina taught at Burgess Elementary School in Sturbridge, MA, for 34 years. Nancy taught in the Southbridge Public School system for 33 years, spending the bulk of that time at the high school. The sisters are longtime supporters of the annual Framingham State Children's Literature Festival, helping sponsor the event each year through the Swiacki Children's Literature Fund. Janina and Nancy are also very active in their community, volunteering at their local parish, co-chairing a committee to have a sculpture erected in the Southbridge Town Common, and co-chairing a committee that supports programs at Harrington Memorial Hospital.

## Ellen DiBattista '98

### ALUMNI LEADERSHIP AND SERVICE AWARD

Ellen is the senior Merchandise Manager for Classic and Basketball Footwear and Apparel for Reebok, Intl. She has been an active alumna at FSU, serving on the Industry Advisory Board for the University's Fashion Design and Retailing program and has supervised many FSU interns at Reebok. She has also mentored new hires at Reebok who are FSU graduates and she attends and critiques the Fashion Design and Retailing program's annual portfolio day. Ellen is teaching an online independent study course at Framingham State this semester.

## Timothy Cornely '75, '80G

### ALUMNI EDUCATOR ACHIEVEMENT AWARD

Timothy spent 35 years in the Holliston Public School system, serving in a wide variety of roles prior to retiring in 2011. During his career he served as an elementary school teacher, guidance counselor, assistant principal, principal, and curriculum director for the district. He spent his last seven years as the assistant superintendent for curriculum and instruction. Timothy's family has strong ties to FSU as his sister, brother and oldest daughter are alumni. His youngest daughter will earn her master's degree from FSU this spring. He is a current member of the Alumni Association Board of Directors.

## Rob DeLeo '06, PhD

### YOUNG ALUMNI ACHIEVEMENT AWARD

Rob is an assistant professor of Global Public Policy at Bentley University, where he teaches courses on public policy and state and local government. His research interests include public policy theory (problem definition and agenda setting) as well as public health policy, science and technology policy, and environmental policy. His work, which examines policy change in anticipation of potentially catastrophic events, has appeared in a number of academic and professional journals. Rob received his doctorate in political science from Northeastern University in 2012.



September 28–30, 2012

# Homecoming & Family Weekend

## RAM PRIDE

Hundreds of current and former students came out to cheer on the Rams.



Hundreds turned out for the annual Homecoming and Family Weekend at Framingham State last fall and watched the football team win a thrilling 35-28 overtime game against the Massachusetts Maritime Academy. Alumni were treated to a free pre-game brunch and gift.



## THE RAM FAITHFUL

Alumni packed the stands to cheer on the football team.



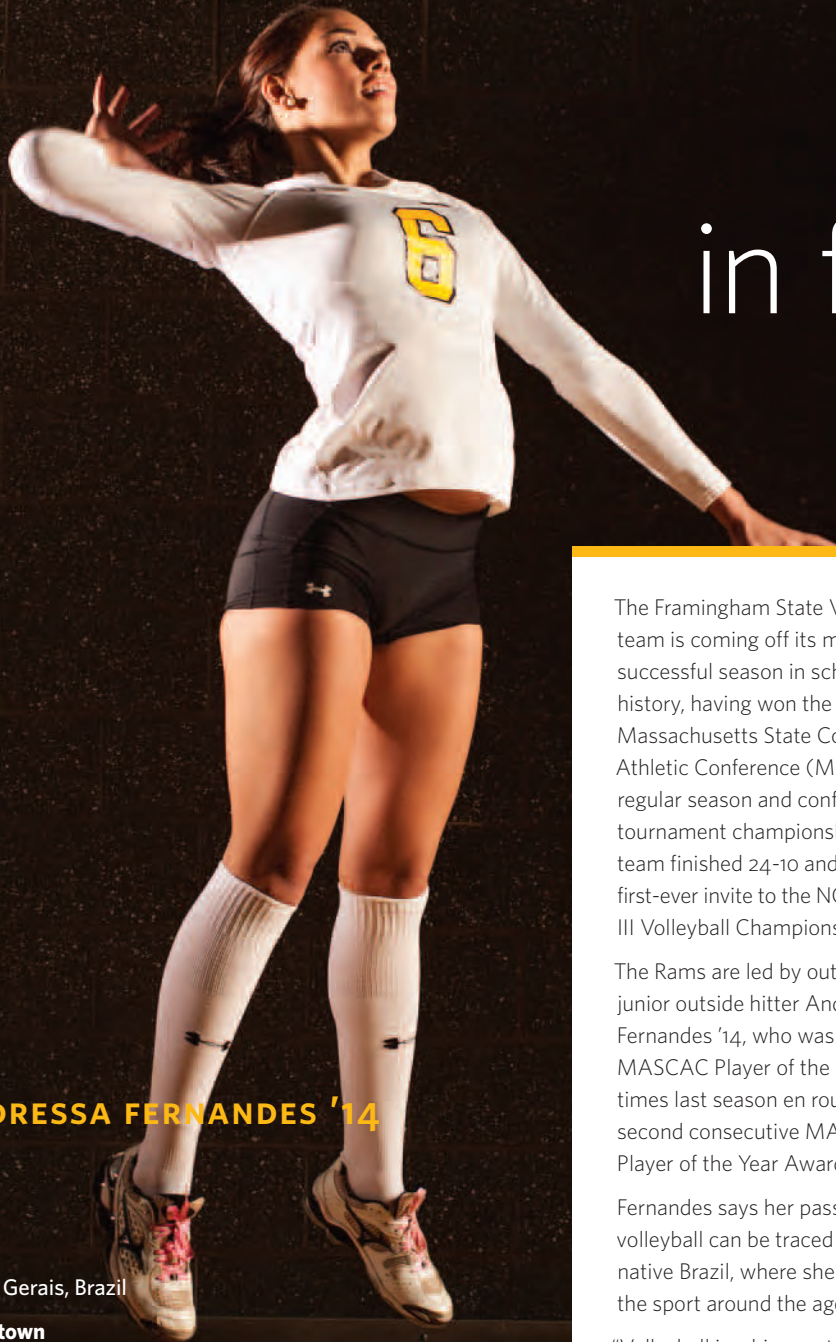
## LOUD AND PROUD

The football team had plenty of support in the stands.



## YOUNG OR OLD

Everyone has a blast at Homecoming and Family Weekend.



# RAM

## in focus

### ANDRESSA FERNANDES '14

**Age**

21

**Born**

Minas Gerais, Brazil

**Hometown**

Framingham, MA

**Favorite Hangout on Campus**

Athletic Center

**Residence Hall**

Commuter Student

**Favorite Aspect of FSU**

Small Classrooms

The Framingham State Volleyball team is coming off its most successful season in school history, having won the Massachusetts State Collegiate Athletic Conference (MASCAC) regular season and conference tournament championship. The team finished 24-10 and earned its first-ever invite to the NCAA Division III Volleyball Championship.

The Rams are led by outstanding junior outside hitter Andressa Fernandes '14, who was named MASCAC Player of the Week six times last season en route to her second consecutive MASCAC Player of the Year Award.

Fernandes says her passion for volleyball can be traced back to her native Brazil, where she took up the sport around the age of 10.

"Volleyball is a big sport in Brazil, particularly for women," says Fernandes. "I learned the basics and fundamentals when I was young."

Her family moved to Massachusetts when Fernandes was 13, and she stopped playing the sport until her junior year of high school at Keefe Regional Technical School in Framingham. The opportunity to play at Framingham State played a role in her decision to attend the University.

Fernandes says that it's exciting to be part of the first FSU team to win the MASCAC Tournament.

"It's something we've been working toward since my freshman year," she says. "All the girls were really focused and passionate from the start this year. We knew that we had a chance to be successful."

When asked about her two Player of the Year awards, Fernandes deflects attention onto her teammates.

"It's an individual award, but this is a team sport," she says. "I play well when my teammates are playing well, so they certainly deserve credit for it."

An economics major, Fernandes says she has high hopes for next season's team.

"We're only losing one senior, so we feel like we have a good shot at the title again," she says. "Hopefully, we can get back to the NCAA Tournament and make some noise."

Fernandes, who didn't speak a word of English when her family moved to the United States, says that she's enjoyed her time at FSU.

"I love all my classes, and I love my major," she says. "It's a great community. I'm really looking forward to senior year."



The football team now sports an impressive 26-8 record over the past three seasons under Tom Kelley, following several years of struggling to earn wins in the NEFC

## FSU Football Continues to Rewrite the Record Books

Another year, another record-setting season for Coach Tom Kelley '76 and his football squad. The team finished 10-2, setting a record for wins and earning its first-ever New England Football Conference Championship (NEFC) by defeating Salve Regina 28-16 in the finals.

The win earned the Rams an automatic bid into the NCAA Division III Football Tournament, where they narrowly lost to Cortland State 20-19 in New York. Kelley was honored as the Division II/III Coach of the Year by the New England Football Writers, and defensive lineman James Muirhead was awarded the Division II/III Gold Helmet Award, which is given to the best player in New England. Muirhead led the Rams in tackles, recorded 10.5 sacks and was the

first-ever FSU player to win the season Gold Helmet Award.

Junior running back Melikke Van Alstynne also enjoyed another stellar season and joined Muirhead on the All-New England Team. He has rushed for more than 4,000 yards during his three years at FSU.

The football team now sports an impressive 26-8 record over the past three seasons under Kelley, following several years of struggling to earn wins in the NEFC. During Kelley's six seasons at the helm, he has been recognized as Coach of the Year five times by four different organizations.

### Annual Rams Booster Club Golf Tournament

MONDAY, JUNE 24, 2013

*Highfields Golf & Country Club*

Help support the proud tradition of Framingham State Athletics by participating in the annual Rams Booster Club Golf Tournament scheduled for Monday, June 24, 2013. The event will once again take place at beautiful Highfields Golf & Country Club, an 18-hole championship course in Grafton, Mass.

The tournament will begin at 10 a.m. with a shotgun start. The day will include a raffle, silent auction and awards dinner along with 18 holes of spectacular golf—all in support of a great cause.

The Rams Booster Club is the fundraising arm for athletics at FSU. Booster Club funding helps underwrite equipment, uniform purchases and team travel.

For registration information, contact Carey Eggen at [ceggen@framingham.edu](mailto:ceggen@framingham.edu) or 508-626-4565.

## Of Special Note...

PROFESSOR EVGENIJA  
GARBOLEVSKY '03: FROM  
STUDENT TO TEACHER

by KATHLEEN MCDONOUGH '13



It took Evgenija Garbolevsky '03 four challenging years of studying, taking notes and writing papers to earn a bachelor's degree in history at Framingham State. But just two years after graduating, Garbolevsky found herself back at the University—only this time, she was the one giving lectures, assigning essays and passing out exams.

Garbolevsky was offered a visiting lecturer position in the History Department in 2005 while still in graduate school at Brandeis University. Having been on the other side of the desk not so long ago, Garbolevsky says she knows what it feels like to be a student and has respect and admiration for the hard work they put into their studies. "It is just exciting to give back and kind of switch places," she says. "It's nice to still be in the classroom no matter what side you are on."

The Bulgarian native was offered full scholarships to Brandeis and Boston College after she graduated from FSU, which she says demonstrates how well the University prepared her for post-graduate education. Garbolevsky remained at Brandeis University through 2011, earning a PhD in history, while continuing to teach at FSU.

The topic of her dissertation recently resulted in her first published book, *The Conformists: Creativity and Decadence in the Bulgarian Cinema 1945–89*, which examines the Bulgarian film industry during the Cold War era.

## ALUMNI BY YEAR

'73 **Warren Griffin '73G** has been elected as commandant of the Department of Massachusetts Marine Corps League. He received his undergraduate and graduate degrees from Framingham State.

'75 **Patti Delaney Pultorak '75G** recently retired as a family and consumer science teacher from the Syracuse City School District in New York.

'79 **June Lantry**, a special education teacher at Oakmont Regional High School in Ashburnham, MA, recently received the 2012 Oakmont Excellence in Education Award. She has taught at the school since 1993.

'80 **Michael Fabbri** was recently named an associate justice of the State District Court. Fabbri received an Alumni Achievement Award in 2005 and served three terms on the Alumni Association Board of Directors.

'81 **Elaine Beckett** has been hired as a health and wellness teacher at the Bromfield School in Harvard, MA. She was previously a health teacher at Nashoba Valley Regional High School.

'84 **Sandra Wheeler** was promoted to vice-president of Tactical Networks for General Dynamics C4 Systems and will work in the U.S. Army's network modernization plan. Sandra will lead the teams responsible for the continuous development and fielding of the U.S. Army's Warfighter Information Network-Tactical, the "cornerstone of the Army's network modernization plan." She has worked for the company for 32 years.

'89 **Alan MacRae** was recently named principal of Triton Regional Middle School in Newbury, MA.

**Teri Hegarty** has been promoted to director of Marketing and Communication for Marlborough Hospital in Marlborough, MA. Before joining Marlborough Hospital, Hegarty was the marketing and public relations manager at Saint Vincent Hospital in Worcester, MA. She is also a playwright and a collage artist whose work was recently exhibited at the Thayer Memorial Library in Lancaster, MA.

'92 **Craig Williams** has been named chief operating officer of Tufts Medical Center. He has more than 20 years of experience in healthcare management, and most recently served as the COO of the Tufts Medical Center Physicians Organization.

'94 **Matthew Pike** has been appointed to the South Dakota Criminal Justice Initiative work group by Governor Dennis M. Daugaard. The work group is a bipartisan collaboration among all three branches of state government. Matthew is a criminal defense attorney who currently works for the Lawrence County Public Defenders Office.

Former FSU roommates **Kerri Casarano '94** and **Laura (Coppola) Spathanas '94** are training to run together in the Fool's Dual Half Marathon in Gloucester, MA, this April. Casarano and Spathanas have remained close friends over the years and look back on their time at Framingham State as four of the best years of their lives.

## Class Notes Submissions

Are you getting married or starting a new job? Do you have a new bundle of joy or did you publish your work?

Share your news and photos with the University and fellow alumni. Each class note should include your full name and year of graduation from Framingham State.

Submit your class notes to  
[publications@framingham.edu](mailto:publications@framingham.edu)

Class notes can also be faxed to  
**508-626-4036**

Questions? Call us at  
**508-626-4012**



'95 **Laura (Murphy) Richards** and her husband Kevin Richards of Framingham, MA, are excited to announce the birth of their fourth child, Jack Forslind Richards, born July 12, 2012, weighing 9 pounds 4 ounces and measuring 21.5 inches. Jack joins older brothers Nick and Charlie (age 10) and Harry (age 7).

**Richard Haney** has joined St. Mary's Bank in Manchester, NH, as a residential loan originator. He previously worked in a similar capacity for People's United Bank.

'98 **Tony Rino** was named executive director of the New England region for IPC: The Hospitalist Company. In that role, he provides operational supervision of IPC's hospitalist services throughout the region, both in acute and post-acute facilities.

'99 **Lisa (Walmsley) Slavin** and her husband Tim welcomed their third child, Thomas Joseph Slavin, on October 30, 2012.

**Jean Perry** was named the new principal for Veterans Memorial Elementary School in Saugus, MA. She is "excited to get to know the community through the students, parents and staff."

**Kristen (Bard) Serra** and Thom Serra welcomed their first child, Ryan Thomas Serra, on November 28, 2012.

'01 **Maria Sorrentino Montanez** and Greg Montanez are pleased to announce the birth of their first child, Tina Marie Montanez, on July 25, 2012. Tina weighed 6 pounds 4 ounces and measured 19.25 inches.

## FSU Alumni Club Annual Spring Meeting

The annual spring meeting and luncheon of the Cape Cod Framingham College Club (CCFCC) will be held on **Saturday, May 4, at the Old Yarmouth Inn, Route 6A, Yarmouthport at 11:30 a.m.** There will be networking, a brief business meeting and dinner and the O'Demello's guitar duo will provide entertainment. The cost is \$26. The event is open to all FSU graduates living on Cape Cod and the Islands, and the primary focus is to raise money for student scholarships.

For more information, contact Barbara Campion at 508-362-2934.

# Event Planning and New Media Course at FSU

Framingham State alumna Suzanne McDonald '95 early on recognized the power of new media to engage an audience and market a product or event. McDonald is president and chief content strategist for Designated Editor, an Internet marketing company that integrates traditional strategies with social media, blogs and user-generated content.

"It's a small niche company that I started with a focus on content for websites, search marketing and social media strategy," says McDonald, who wrote for *The Gatepost* during her time at FSU and previously worked for the *Boston Globe*.

Now, McDonald is sharing her expertise with current students at FSU. Last fall, she taught Framingham State's first-ever Event Planning and New Media course. She also teaches a Social Media Strategies course at the University of Rhode Island.

"I've really enjoyed coming back to Framingham," McDonald says. "The students here are hard-working and smart. Class just flies right by because the students are engaged and have lots of questions."

During the course, McDonald had the students analyze what goes into planning a conference, how to handle sponsorships and how to market and build interest in an event through social media, blogs and other tools. The major project for the year required each of the 28 students to pair up with a nonprofit agency to gain an understanding of their mission and audience. Students then created a plan for a major fundraiser for the agency, including information on how the event would be marketed, who would go and what their motivations would be for supporting the cause.

While the students didn't actually run the event they planned, they did share the plans with the nonprofit agencies for future consideration.

"The students came up with several ideas that the nonprofit agencies were interested in exploring further," McDonald says. "Overall, I'd say that the event was a big success."



SUZANNE MCDONALD '95

"The industry changes so rapidly that it's critical to network with other professionals to stay on top of new developments and technologies."

In addition to teaching and running her company, McDonald founded Newport Interactive Marketers, a networking group made up of dozens of marketing and new media professionals.

"The industry changes so rapidly that it's critical to network with other professionals to stay on top of new developments and technologies," McDonald says.

To learn more about McDonald's company and networking group, visit [www.designatededitor.com](http://www.designatededitor.com).

# Innovative Resource for Parents of Special Needs Children

Adam Goldberg '07G never imagined after graduating from one of the most prestigious business schools in the country that his career would lead him to educational consulting.

But after earning his degree from the Wharton School at the University of Pennsylvania and spending a few years working in the high-tech industry, Goldberg realized he wanted to join his mother's family practice.

"My mother was inspired by a close family member on the autism spectrum to get involved in educational consulting for parents of special needs children," Goldberg says. "I never expected I would join her in that. But on a fateful redeye flight home one day, it struck me that I wanted to change my career path."

When Goldberg approached his mother about the idea, she told him he needed to get his master's degree, which led him to Framingham State, where he earned an MA in Special Education.

"I had a great experience at FSU because the teaching staff and administration in Special Education knew right off the bat I wasn't a typical student," he says. "I wasn't attending for teaching licensure. I was there to gain knowledge that would be beneficial for providing private guidance to families of students who are struggling."

Goldberg quickly realized that one of the biggest challenges in educational consulting is that 95 percent of the people seeking assistance

had to be turned away because they couldn't afford pricy private service. That's when he decided to make use of his business and technology expertise.

Goldberg is the founder of myEdGPS, a first-of-its-kind online platform for parents of children diagnosed with autism, attention deficit hyperactivity disorder (ADHD), learning disabilities or other exceptional needs.

"It's sort of like TurboTax for special education navigation," Goldberg says. "Parents answer a series of questions about their child and based on their answers they are brought down a particular path. It simplifies what can be a complicated and frustrating process, provides parents with online tools and puts them in touch with experts for less money than they would pay visiting them off the street."

The service is getting a lot of attention. It was showcased last year at the Democratic and Republican national conventions and at the White House. It's also been featured in *The Huffington Post*, on CBSRadio, and in several other forums.

"We're really excited about the response we're getting," Goldberg says. "We have been able to raise a lot of capital and we are planning for a full commercial launch around March or April."

For more information about the service, visit [www.myedgps.com](http://www.myedgps.com).

"I had a great experience at FSU because the teaching staff and administration in Special Education knew right off the bat I wasn't a typical student."

ADAM GOLDBERG '07G

'03 Mark D'Agostino is president of RF D'Agostino Insurance Agency, Inc., in Brockton, MA. He enjoys Bruins and Red Sox games.

Dan Izen will be the manager of a new office for Professional Sound Services in New Orleans, LA. Professional Sound Services offers audio equipment sales, service and rentals throughout the United States and internationally. Izen is an accomplished sound mixer who has worked on a number of television shows, including *Common Law*, which aired this past summer on the USA Network.

'05 Kelly Slavin has received the Young Manager Development Award, given annually by the Worshipful Company of Pattenmakers. This charitable foundation identifies young people in the footwear industry, and the award assists with continued professional development and education. Kelly currently resides in England.

Rich Gadoury is the new head coach for the Granby High School Football Team in Granby, CT. He was previously an assistant coach there, and also has coached at Weston High School in Weston, MA, and Western New England College.



'06 Felipe Pereira married Keriann Pereira in June 2012.

Veishal Singhal '09G is the new community banking officer and manager for the Needham branch of Middlesex Savings Bank. He has been with the company for 12 years.

'07 April Bonarrigo was engaged to Chris Palmquist in June 2012. The couple is planning a wedding for September 2013.





**f Framingham State University Alumni**

Your classmates, your University, your community... Join alumni online to network, learn about upcoming events and find out what's new at your alma mater.

[www.facebook.com/framinghamstatealumni](http://www.facebook.com/framinghamstatealumni)

'08 Cheryl Van de Streek '08G recently received the Love of Learning Award from the Phi Kappa Phi Honor Society. She is a teacher in the Breckinridge County Public Schools in Kentucky.

'09 Jenna Marie Kelly received her Juris Doctor degree from New England Law during a commencement ceremony at the City Performing Arts Center's Wang Theatre in May 2012. A Dean's List student, Kelly was the recipient of an Academic Achievement Scholarship and a CALI Excellence for the Future Award for Alternative Dispute Resolution. She was a Barbri representative and a member of both the Women's Law Caucus and Phi Alpha Delta.

Kelly (Ney) Megna recently married Michael Megna. Kelly is studying holistic nutrition and is employed by the Longfellow Health Center in Wayland, MA. Michael is a team leader at Whole Foods Market in Cambridge, MA.

Josiah Curtis and Jennifer Bilbrey were married in October 2012. Josiah is an associate attorney with Fragomen, Del Rey, Bernsen & Loewy, LLP, and Jen has accepted a position as a research technician for Dana-Farber Cancer Institute.

'10 Jenna Stewart, an income development associate for the American Cancer Society, is engaged to Anthony Langone.

Angela Theresa DiSanta and William Edward Capen recently announced their engagement. A wedding is set for October 2013.

Marcie Lee Vassy and Jason Perron Glick are set to be married in October 2013.

Raquel Vazquez became director of Dining Services for the Jaffrey-Rindge Cooperative School District in New Hampshire.

'11 Bret Shepherd '11G is the new director of Career Services at Remington College in Shreveport, LA.

**IN MEMORIAM**

- Barbara Lovett Van Buskirk '30 — June 21, 2012
- Helen M. (Hatch) Vaughan '34 — June 23, 2012
- Marguerite A. Philbin '36 — July 29, 2012
- Priscilla Pettingell Fischer '39 — June 14, 2012
- Helen Maxwell Horan '41 — Dec. 11, 2012
- Marion Congdon Taft '42 — Aug. 12, 2012
- Edna (Banis) Cann '43 — Oct. 5, 2012
- Elaine Murphy Maroney '43 — Nov. 21, 2012
- Shirley Askin Mason '43 — Oct. 10, 2012
- Doris Hickman Levanitis '44 — May 11, 2011
- Phyllis Pennucci Lennon '45 — April 4, 2012
- Claire Haffer Karlson '49 — July 10, 2012
- Norma Higgins Bowersox '51 — July 17, 2012
- Margaret Kennedy Heelan '51 — Feb. 26, 2012
- Eleanor Moriarty Burns '52 — June 23, 2012
- Myra Farnum Claffin '54 — Nov. 21, 2012
- Nancy Thoren Macdonald '65 — June 4, 2012
- Charles W. Bassett '66G — July 15, 2012
- Malcolm W. Nason '66G — Aug. 31, 2012
- Doris Liberman Salzberg '66G — Nov. 22, 2012
- Phyllis Mattley Palmer '72G — Aug. 11, 2012
- Howard M. Sears '73 '78G — Aug. 8, 2012
- Leslie Ann Clark '75 — June 5, 2010
- Pamela A. Murphy '75 — March 21, 2012
- Paul Saletnik '76 — Sept. 1, 2012
- Ellen Franklin Hill '80 — June 30, 2010
- Cynthia (Cyr) McIntosh '80 — Sept. 2, 2012
- Patricia M. (Wall) Hennigar '81 — Aug. 24, 2012
- Rose Marie Tanner DeCenzo '82 — July 7, 2012
- Helen Shea Sheridan '82 — Nov. 27, 2012
- Constance Leard Palmer '86G — Dec. 6, 2012
- Laura Mix Kerr '87 — July 17, 2012
- Katherine DeWolf '93 — Jan. 27, 2011
- Robert G. Scott '93, '98G — Dec. 29, 2012
- Matthew M. Felts '97 — July 4, 2012

**Of Special Note...**

**FSU ALUMNA PUBLISHES PSYCHOLOGICAL THRILLER**

Gledé Browne Kabongo '94 recently released her debut novel, *Conspiracy of Silence*, a psychological thriller about an Ivy League-educated executive who would do anything to prevent revealing a dark secret from her past.



Kabongo says that like many writers, she drew inspiration for the protagonist, Nina Kasai, from her own life.

"In the case of *Conspiracy of Silence*, my protagonist is a marketing executive," Kabongo says. "I was able to draw on my experience as a marketer to make that aspect of the character's life authentic."

Kabongo began writing at the age of 14 when she covered soccer matches for her hometown newspaper. She has also written for the *Patriot Ledger* and *MetroWest Daily News*, two Massachusetts-based metropolitan newspapers. For the past decade, Kabongo has worked in senior marketing roles for organizations in the information technology, publishing and nonprofit sectors. She spends much of her free time writing.

"I'm working on my second novel now and will probably start outlining the third towards the end of this year or early next year," she says.

Her dream is to one day win a Pulitzer Prize for fiction and a Best Screenplay Academy Award®.

To learn more about Kabongo and her debut novel, visit [www.gledebrownekabongo.com](http://www.gledebrownekabongo.com).



# Officials Celebrate McAuliffe Center Renovations

by KATHLEEN MCDONOUGH '13



Getting a generation of tech-savvy children who are hooked on social media and television interested in science and math is no easy task.

But Framingham State's Christa Corrigan McAuliffe Center has been making the job easier since 1986 by providing middle-school children with interactive experiences designed to bring science and math to life. Renovations to the facility and the installation of a brand-new planetarium will allow officials at the center to enhance the experience for the more than 12,000 students who visit annually.

Faculty, staff and local politicians gathered at the center behind O'Connor Hall last October to celebrate the new building during a ribbon-cutting ceremony. FSU President Timothy J. Flanagan said that the McAuliffe Center is critical to the Commonwealth because it provides professional development in global warming, engineering and topographical maps to teachers. The center also teaches kids about Science, Technology, Engineering and Math (STEM) while they are having fun in the simulated Mission Control Room, Space Station and planetarium. "This one-of-a-kind experience stays with students for years and, for many, it helps spark an interest in the STEM subjects."

The newest addition to the McAuliffe Center—a planetarium that boasts a brand-new \$260,000 projector system—will allow FSU students to develop their own programming to be projected onto the dome. In addition to taking trips into space, the technology will enable

middle-school students to "take a trip inside a human cell or travel to the darkest depths of the ocean... . The learning opportunities are limitless," said Flanagan.

Those in attendance at the ribbon-cutting ceremony were led into the planetarium for a sneak-peek at some of the simulations from the state-of-the-art projector. Tilting their heads back in the dark circular room and looking up at the massive planetarium dome, visitors entered the solar system while stars, planets and beams of light danced across the ceiling as if they could be touched by merely reaching up. The wide-eyed audience also went on a journey through the craters of Mars in search of life's most necessary resource—water. The lifelike projection of the dome made each corner and crevice of Mars seem real for the audience, who were gripping the edge of their seats and audibly gasping at the experience. Middle-school students will be just as riveted by this experience as were the adults at the ceremony, and they will take away important educational lessons as well.

Massachusetts State Senator Karen Spilka, who supported funding for the project, said the new McAuliffe Center will "inspire thousands of children across the Commonwealth" and instill in them "an exciting thirst for knowledge."

The McAuliffe Center was named in memory of Framingham State alumna Christa Corrigan McAuliffe '70, the first teacher in space. The University was honored to have Grace Corrigan, McAuliffe's mother, attend the ceremony. "Christa would be so grateful for all the students coming here," said McAuliffe. "She loved the University, and had a wonderful four years here."

"This one-of-a-kind experience stays with students for years and, for many, it helps spark an interest in the STEM subjects."



## Fred Brown Includes FSU in His Will

Fred Brown is not a Framingham State alumnus. However, he feels a strong connection to the University through his beloved wife Marjorie (Morgan) Brown '58, who cherished her time at FSU and passed away in 2002.

"Marjorie really loved attending Framingham State," Brown says. "She always wanted to teach children, and her education at the University allowed her to follow that dream."

Marjorie's education took her to Japan to teach for a year and later to California, where she met Fred Brown. The couple eventually moved to Massachusetts to be closer to family. Marjorie grew up in Holliston, MA.

Brown endowed a scholarship in his wife's name shortly after she died. To ensure the scholarship remains funded for years to come, Brown recently informed the University that he would be including a generous bequest to FSU in his will.

"I do feel a connection to Framingham State even though I never attended," Brown says. "I was invited to Marjorie's 50th class reunion and got a chance to meet her classmates, and learn what they did and where they taught. The people there and the alumni team at the University were very good to me."

Brown says that since he and Marjorie never had children of their own and the rest of his family is well taken care of, he wants to leave something that will help future students and carry on his wife's memory through the Marjorie Morgan Brown '58 Scholarship.

"I think it's important to help out the kids," he says. "I certainly could have used some extra money when I was in college. It would have been nice to receive some money to help pay for books and other expenses."

One of the easiest ways to leave a legacy at Framingham State University is through a bequest. By making arrangements for FSU in your will, you can support a specific department or program, establish a new scholarship or grow an existing one, or provide funds for the University's greatest needs at that time.

You may arrange for the University to receive a specific dollar amount, a percentage of the estate or the remainder of your estate after all obligations have been met. An outright bequest to FSU is fully tax-deductible for estate-tax purposes.

For more information on planned giving, estate planning and endowment opportunities, please contact the Office of Development and Alumni Relations at [508-626-4012](tel:508-626-4012).

“Marjorie really loved attending Framingham State. She always wanted to teach children, and her education at the University allowed her to follow that dream.”



# Framingham State University

100 State Street, PO Box 9101, Framingham, MA 01701-9101

Nonprofit Org.  
U.S. Postage  
**PAID**  
Holliston, MA  
Permit NO. 20

**Parents:** If this issue of *Framingham State* magazine is addressed to your son or daughter who now lives at a separate permanent address, please let us know. Call 508-626-4012 or email [alumni@framingham.edu](mailto:alumni@framingham.edu).

## UPCOMING EVENTS

### Food & Nutrition Gala Dinner

SATURDAY, MAY 4, 2013

Framingham State Food & Nutrition alumni are encouraged to attend this special event to connect with friends and celebrate the 25th anniversary of the John C. Stalker Institute of Food and Nutrition.

### All-Alumni Reunion & Commencement Weekend

MAY 17-19, 2013

The Framingham State University Alumni Association is hosting the perfect opportunity to catch up with old friends, make new ones and learn about some of the exciting changes taking place at your alma mater.

### Annual Alumni Red Sox Outing

FRIDAY, JUNE 7, 2013

Catch a Red Sox game while you catch up with old friends. There will be an alumni reception prior to the Red Sox taking on the Anaheim Angels at 7:05 p.m. at historic Fenway Park. Alumni are each limited to two tickets. Tickets will not be mailed and must be picked up on game day.

## SAVE THE DATE

### 2013 Rams Booster Club Golf Tournament

MONDAY, JUNE 24, 2013 | 10 A.M. SHOTGUN START

Join us for 18 holes of championship golf in a scramble format at Highfields Golf & Country Club in Grafton, Mass., in support of Framingham State University Athletics. A raffle, silent auction and awards dinner will round out the day.

### Tanglewood

SUNDAY, AUGUST 4, 2013

Join fellow alumni, family and friends at this acclaimed summer venue: The Leonard Bernstein Memorial Concert, featuring the Tanglewood Music Center Orchestra and Festival Chorus. This year's event will feature world-famous cellist Yo-Yo Ma!

### Homecoming & Family Weekend

SEPTEMBER 20-21, 2013

Discover what Ram Pride is all about at the 2013 Framingham State University Homecoming & Family Weekend. Come cheer on the Rams and stop by the alumni tent for a free pre-game brunch and alumni gift.

For more information or to register for alumni events, contact the Office of Alumni Relations at 508-626-4012 or [alumni@framingham.edu](mailto:alumni@framingham.edu).

Purchase tickets for certain events online at [www.framingham.edu/alumnievents](http://www.framingham.edu/alumnievents)

Visit our fan page at [www.facebook.com/framinghamstatealumni](http://www.facebook.com/framinghamstatealumni)



*Framingham State University is committed to sustainability and chose to print this magazine on Utopia 2 paper, which is certified to Forest Stewardship Council™ (FSC)® standards and contains a minimum of 10% post-consumer recovered fiber.*