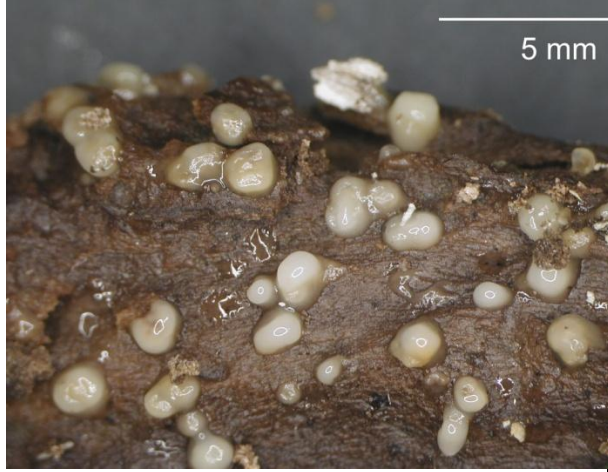
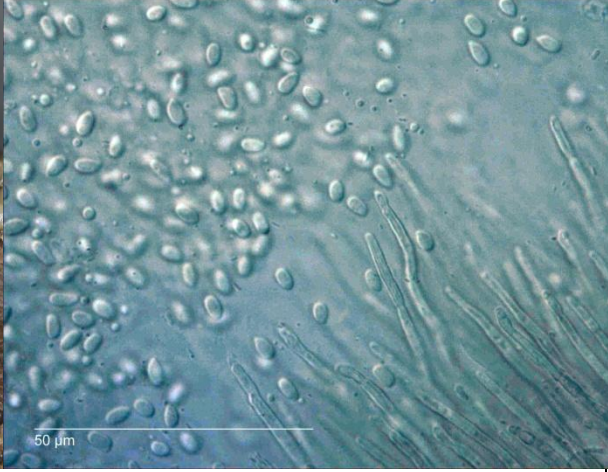


Mycological Notes 8: Grey jelly blobs and the Yin-Yang fungus

Jerry Cooper, June 2012


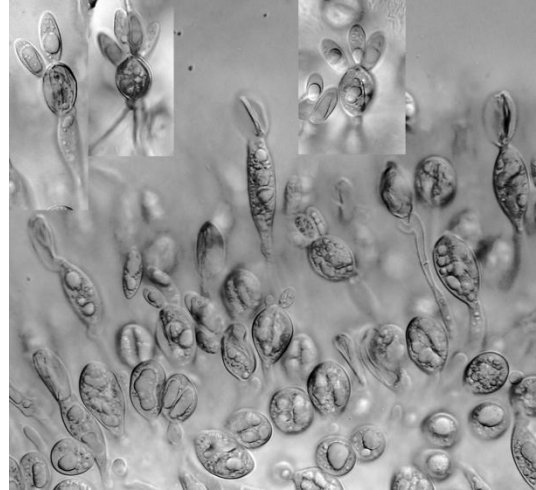
Grey gelatinous pustules are quite common on wood. Some collections in New Zealand have been referred to *Sirobasidium brefeldianum* but it is always worth a closer look. Most of the pustules I've looked are the sporodochial spermatial anamorph state of a probable ascomycete.

Not *Sirobasidium*

	
PDD 96479	conidia

Sirobasidium is a true 'jelly fungus', a heterobasidiomycete, and microscopically is quite distinctive. MyoKeys has some good macro and micro images of [Sirobasidium album](#)

I have come across the red *Sirobasidium rubrofusum* in New Zealand...

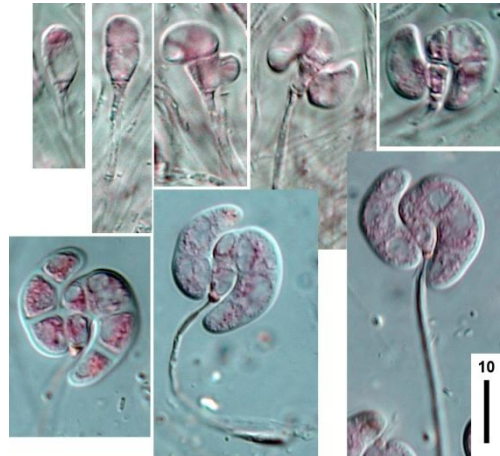
	
<p><i>Sirobasidium fuscum</i> on a Diatrypaceous ascomycete on wood (PDD 95538)</p>	<p>basidia and basidiospores</p>

The Yin-Yang Fungus

Here's another collection of grey gelatinous blobs. If you see this one then I'd like to know about it.



scale = 2mm



PDD 86923. On wood.

I have no idea what this is. My nearest guess is an undescribed species of *Delortia*, *Everhartia* or *Helicomyxa*. Unfortunately I have seen this just once and an attempt to get it into culture failed.

So grey gelatinous blobs are worth a second, and closer look, and not all *Sirobasidium brefeldianum*