

Sensitive Plant Survey and Reporting Requirements - BLM

BLM Vernal Field Office

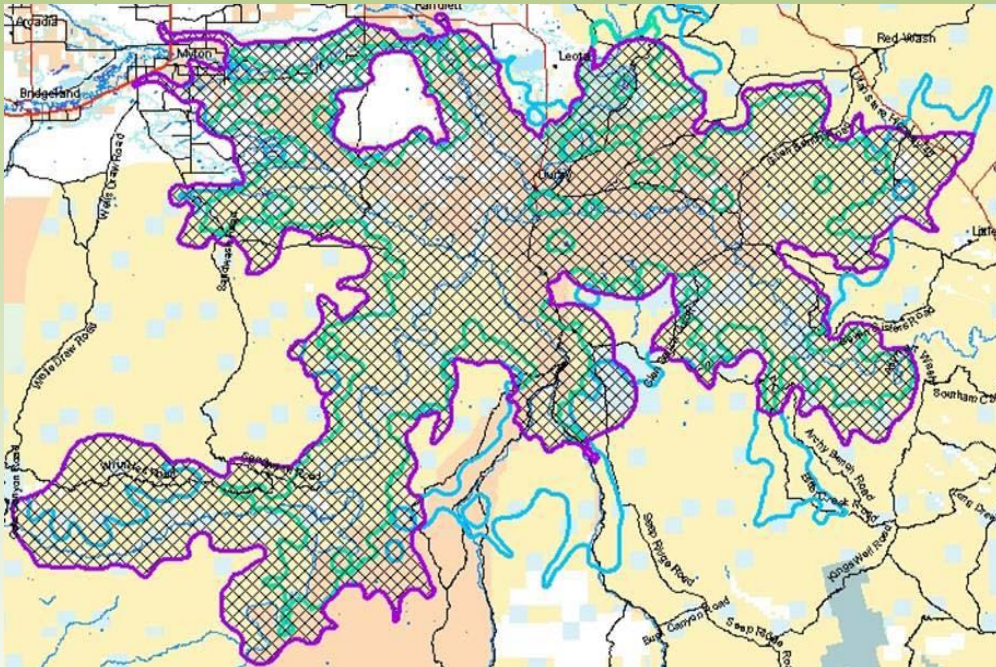


Habitat definitions

VFO RMP (Appendix L-6,7 footnote)

- Potential:

For most listed species, defined by “potential habitat polygon;” remains at discretion of USFWS and BLM botanists



- Suitable:
Can be marginal or ideal
- Occupied:
Known occurrence plus 300 feet

What are BLM-Sensitive Plant Species?

In addition to threatened, endangered, and candidate plants:

- Conservation Agreement plants
- Other sensitive plants that are not listed

Utah BLM list will be revised soon?

Table 1. BLM-VFO Sensitive Plant Species

Genus	Species	Variety/Subspecies	Common Name	County
<i>Aquilegia</i>	<i>atwoodii</i>		Atwood columbine	Uintah
<i>Aquilegia</i>	<i>scopulorum</i>	var. <i>goodrichii</i>	rock columbine	Duchesne
<i>Astragalus</i>	<i>equisolensis</i>		horseshoe milkvetch	Uintah
<i>Astragalus</i>	<i>hamiltonii</i>		Hamilton milkvetch	Uintah
<i>Boechera</i>	<i>fernaldiana</i>	ssp. <i>vivariensis</i>	Fernald rockcress	Uintah
<i>Cleomella</i>	<i>hillmanii</i>	var. <i>goodrichii</i>	desert stinkweed	Uintah
<i>Cryptantha</i>	<i>barnebyi</i>		Barneby catseye	Uintah
* <i>Cryptantha</i>	<i>grahamii</i>		Graham catseye	Duchesne, Uintah
<i>Erigeron</i>	<i>untermannii</i>		marly ridge daisy	Duchesne, Uintah
<i>Frasera</i>	<i>ackermaniae</i>		Ackerman gentian	Uintah
<i>Hymenoxys</i>	<i>lapidicola</i>		rock hymenoxys	Uintah
<i>Lepidium</i>	<i>huberi</i>		Huber pepperplant	Uintah
<i>Mentzelia</i>	<i>goodrichii</i>		Goodrich blazingstar	Duchesne
<i>Penstemon</i>	<i>acaulis</i>	var. <i>acaulis</i>	stemless beardtongue	Daggett
<i>Penstemon</i>	<i>gibbensii</i>		Gibben beardtongue	Daggett
<i>Penstemon</i>	<i>goodrichii</i>		Goodrich beardtongue	Duchesne, Uintah
<i>Penstemon</i>	<i>grahamii</i>		Graham beardtongue	Duchesne, Uintah
<i>Penstemon</i>	<i>scariosus</i>	var. <i>albifluvis</i>	White River beardtongue	Uintah
<i>Phacelia</i>	<i>argylensis</i>		Argyle Canyon phacelia	Duchesne
<i>Thelesperma</i>	<i>subnudum</i>	var. <i>caespitosum</i>	Green River greenthread	Duchesne
* <i>Townsendia</i>	<i>strigosa</i>	var. <i>prolixa</i>	strigose townsendia	Duchesne
<i>Yucca</i>	<i>sterilis</i>		sterile yucca	Uintah

This list is updated regularly and plant species can be added or deleted based on changes made to the state list of sensitive plant species. * These species have been proposed to the State Office for de-listing.

VERNAL FIELD OFFICE
BLM-SENSITIVE PLANT SPECIES
PROTOCOL



Same as it ever was ...

Listed Plant Species

Hesperidanthus (Schoenocrambe) argillaceus

Hesperidanthus (Schoenocrambe) suffrutescens

Sclerocactus brevispinus

Sclerocactus wetlandicus

Spiranthes diluvialis

- For *Sclerocactus*, 100 percent clearance surveys within polygon
 - Maybe surveys outside of polygon too
- For all other species, habitat assessments within polygons
 - 100 percent clearance within suitable habitat
- Survey during flowering or demonstrate identification
 - Prior approval from USFWS
 - *Sclerocactus brevispinus*: additional requirements

And...

300 foot surveys for ALL BLM-sensitive plants



Survey and reporting for BLM sensitive plant species is the same as for listed species (see 2011 USFWS guidance):

- 300 foot buffer (pipeline exception)
- conducted by qualified individuals
- data submitted to BLM at end of year, UNHP forms
- ... etc.

Exception:

Surveys can be good for up to 4 years (may need spot checks)

It is up to you, the third-party surveyor, to make sure you and your field crews are trained and practiced in identification.

- Uinta Herbarium (BLM)
- USU Uinta Basin Herbarium



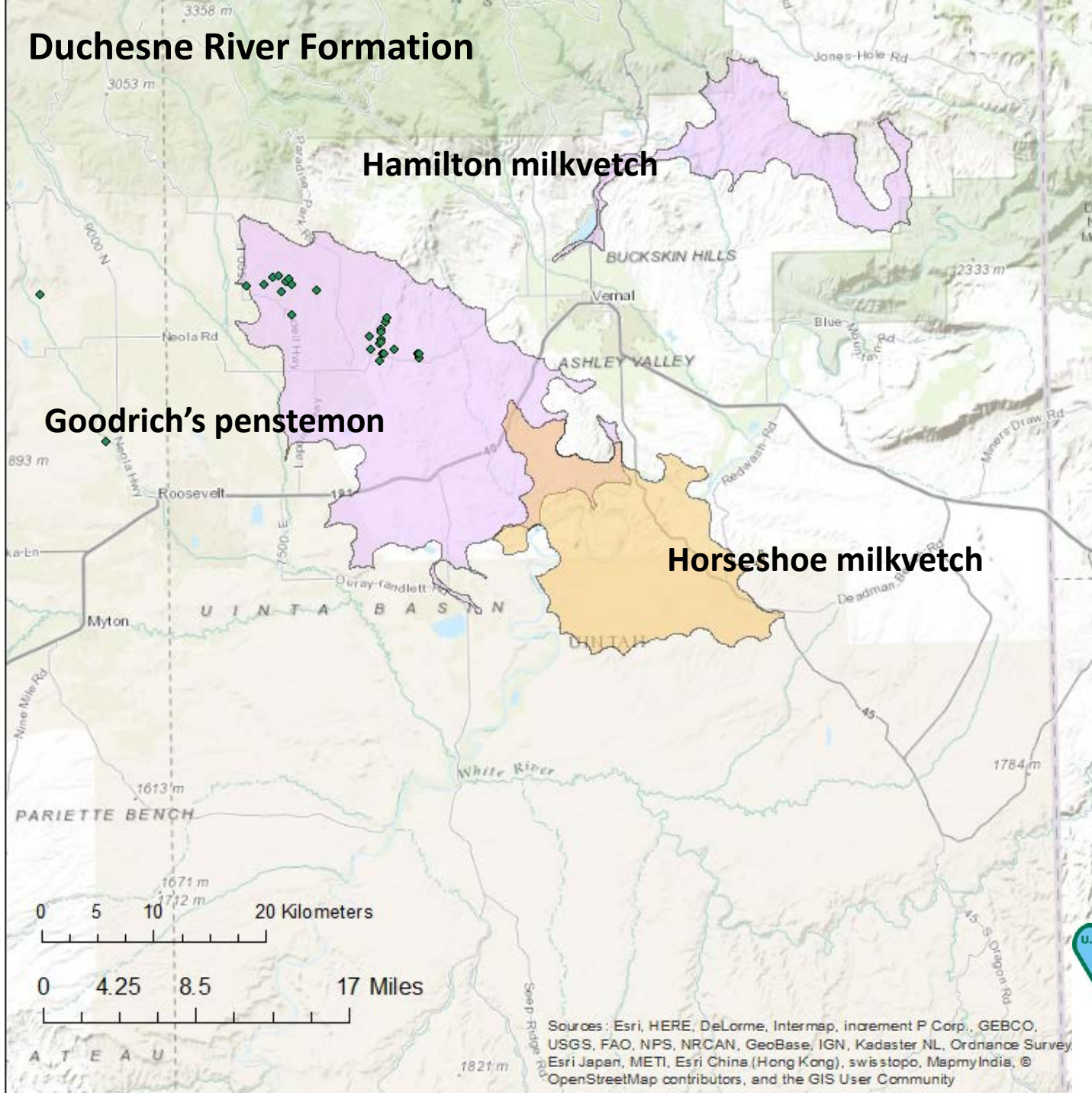
... can prevent misidentification.

Table 1. BLM-VFO Listed and Sensitive Plant Species

Group	Genus	Species	Variety/Subspecies	Common Name	County
Duchesne River Formation	<i>Astragalus</i>	<i>equisolensis</i>		horseshoe milkvetch	Uintah
	<i>Astragalus</i>	<i>hamiltonii</i>		Hamilton milkvetch	Uintah
	<i>Penstemon</i>	<i>goodrichii</i>		Goodrich beardtongue	Duchesne, Uintah
East Green River Shale	<i>Cryptantha</i>	<i>barnebyi</i>		Barneby catseye	Uintah
	* <i>Cryptantha</i>	<i>grahamii</i>		Graham catseye	Duchesne, Uintah
	<i>Penstemon</i>	<i>grahamii</i>		Graham beardtongue	Duchesne, Uintah
	<i>Penstemon</i>	<i>scariosus</i>	var. <i>albifluvis</i>	White River beardtongue	Uintah
	<i>Hesperidanthus</i>	<i>argillaceus</i>		Clay reed-mustard	Uintah
	<i>Hesperidanthus</i>	<i>suffrutescens</i>		Shrubby reed-mustard	Duchesne, Uintah
Widespread (with <i>Scleros</i>)	<i>Yucca</i>	<i>sterilis</i>		sterile yucca	Uintah
	<i>Sclerocactus</i>	<i>brevispinus</i>		Pariette cactus	Duchesne, Uintah
	<i>Sclerocactus</i>	<i>wetlandicus</i>		Uinta Basin hookless cactus	Uintah
SE Flank of Uintas	<i>Lepidium</i>	<i>huberi</i>		Huber pepperplant	Daggett, Duchesne, Uintah
	<i>Spiranthes</i>	<i>diluvialis</i>		Ute ladies'-tresses	
West Green River Shale	<i>Aquilegia</i>	<i>scopulorum</i>	var. <i>goodrichii</i>	rock columbine	Duchesne
	<i>Erigeron</i>	<i>untermannii</i>		marly ridge daisy	Duchesne, Uintah
	<i>Mentzelia</i>	<i>goodrichii</i>		Goodrich blazingstar	Duchesne
	<i>Phacelia</i>	<i>argylensis</i>		Argyle Canyon phacelia	Duchesne
	<i>Thelesperma</i>	<i>subnudum</i>	var. <i>caespitosum</i>	Green River greenthread	Duchesne
Browns Park White Shale	<i>Penstemon</i>	<i>acaulis</i>	var. <i>acaulis</i>	stemless beardtongue	Daggett
	<i>Penstemon</i>	<i>gibbensii</i>		Gibben beardtongue	Daggett
Near Dinosaur National Monument	<i>Boechea</i>	<i>fernaldiana</i>	ssp. <i>vivariensis</i>	Fernald rockcress	Uintah
	<i>Cleomella</i>	<i>hillmanii</i>	var. <i>goodrichii</i>	desert stinkweed	Uintah
	<i>Hymenoxys</i>	<i>lapidicola</i>		rock hymenoxys	Uintah
Coyote Gulch	<i>Frasera</i>	<i>ackermaniae</i>		Ackerman gentian	Uintah
Desolation Canyon	<i>Aquilegia</i>	<i>atwoodii</i>		Atwood columbine	Uintah
Widespread	* <i>Townsendia</i>	<i>strigosa</i>	var. <i>prolixa</i>	strigose townsendia	Duchesne

This list is updated regularly and plant species can be added or deleted based on changes made to the state list of sensitive plant species. * These species have been proposed to the State Office for de-listing.

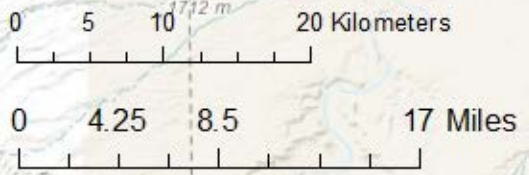
Duchesne River Formation



Hamilton milkvetch

Goodrich's penstemon

Horseshoe milkvetch



Sources: Esri, HERE, DeLorme, Intermap, increment P Corp., GEBCO, USGS, FAO, NPS, NRCAN, GeoBase, IGN, Kadaster NL, Ordnance Survey, Esri Japan, METI, Esri China (Hong Kong), swisstopo, MapmyIndia, © OpenStreetMap contributors, and the GIS User Community



Hamilton milkvetch

Astragalus hamiltonii



Goodrich penstemon (beardtongue)



Horseshoe milkvetch

Astragalus equisolensis

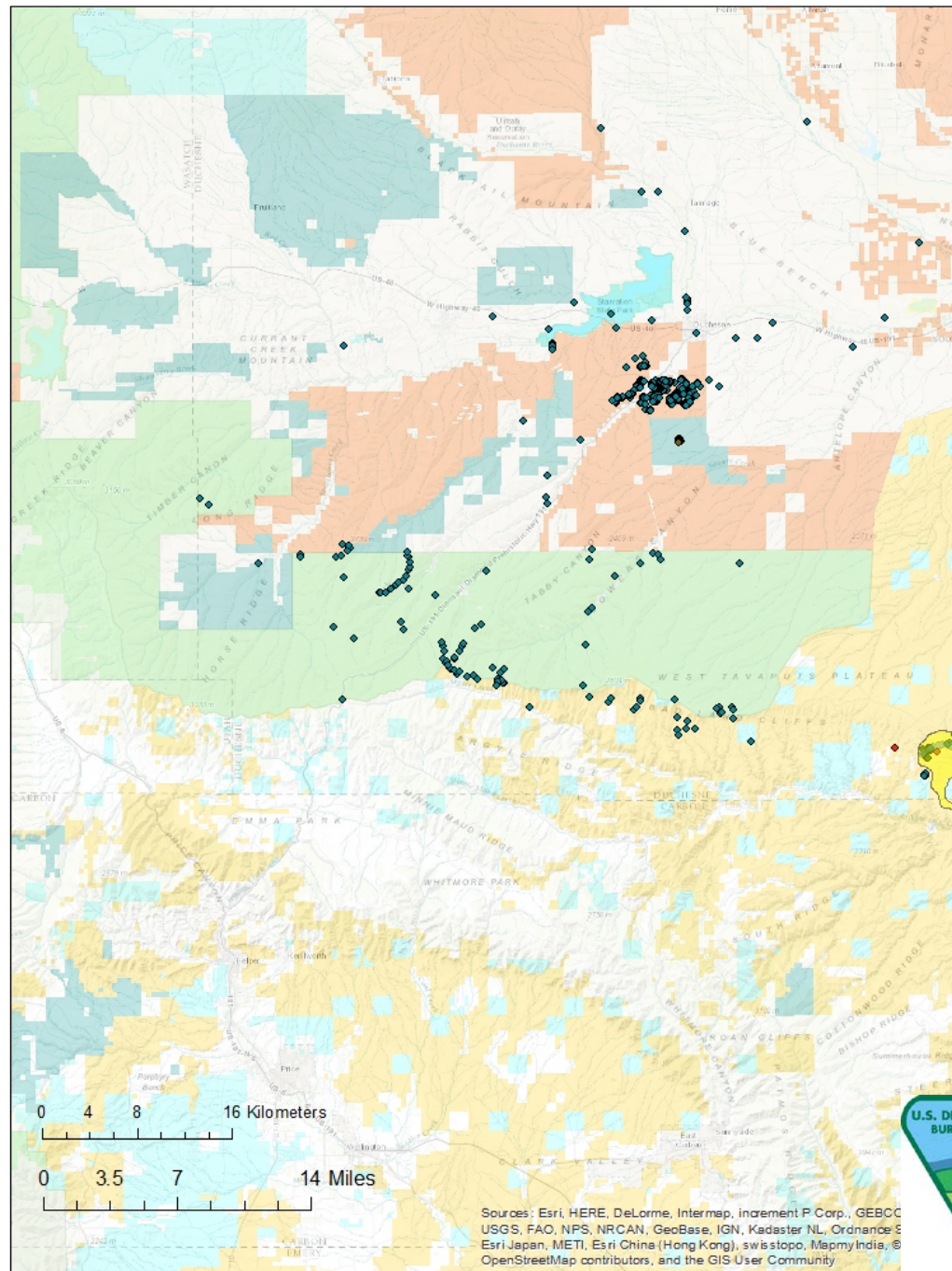


Photo by Aaron Roe, BLM



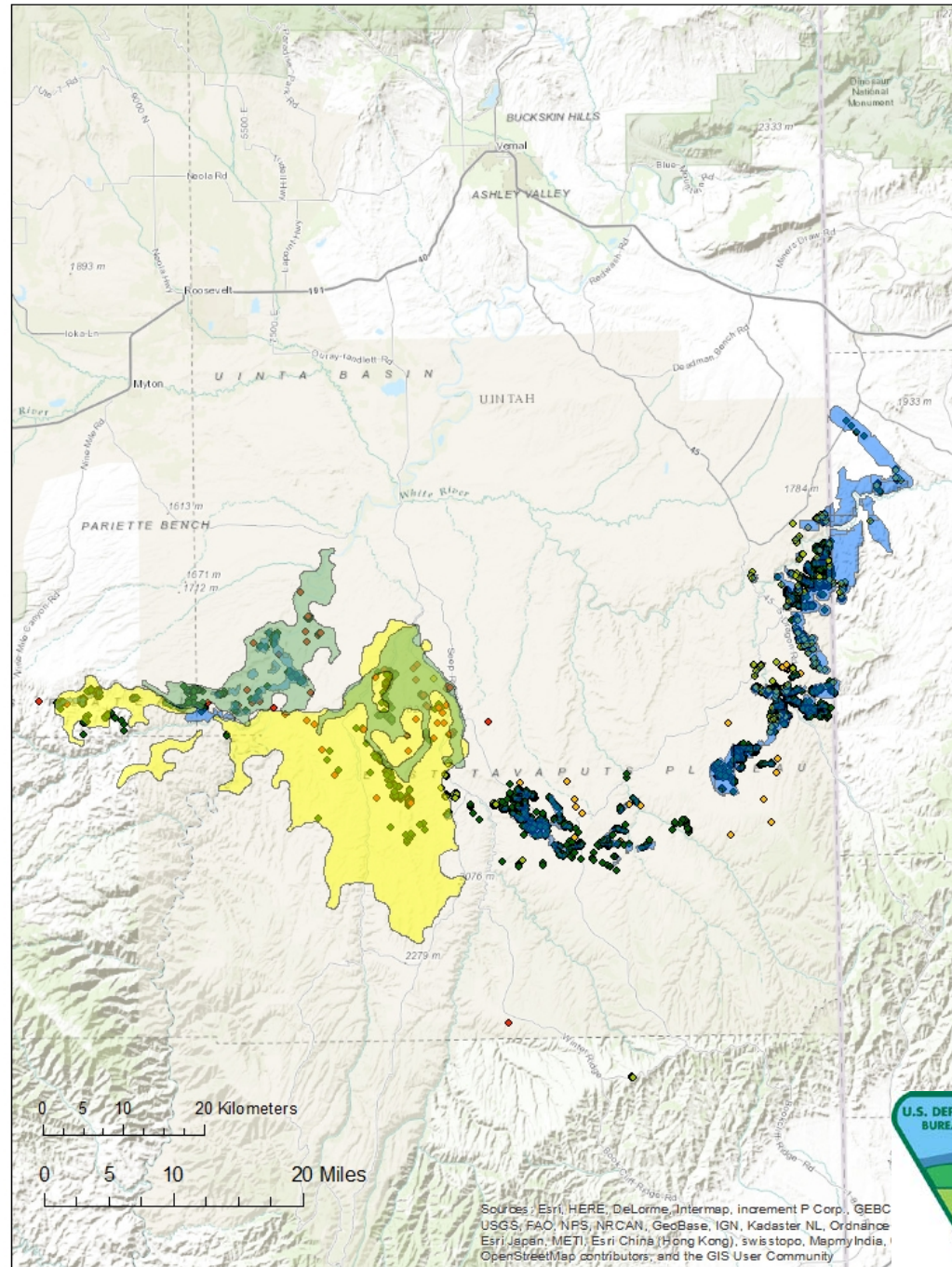
Western Tavaputs/Green River Shale?

Talk to VFO Botanists ...

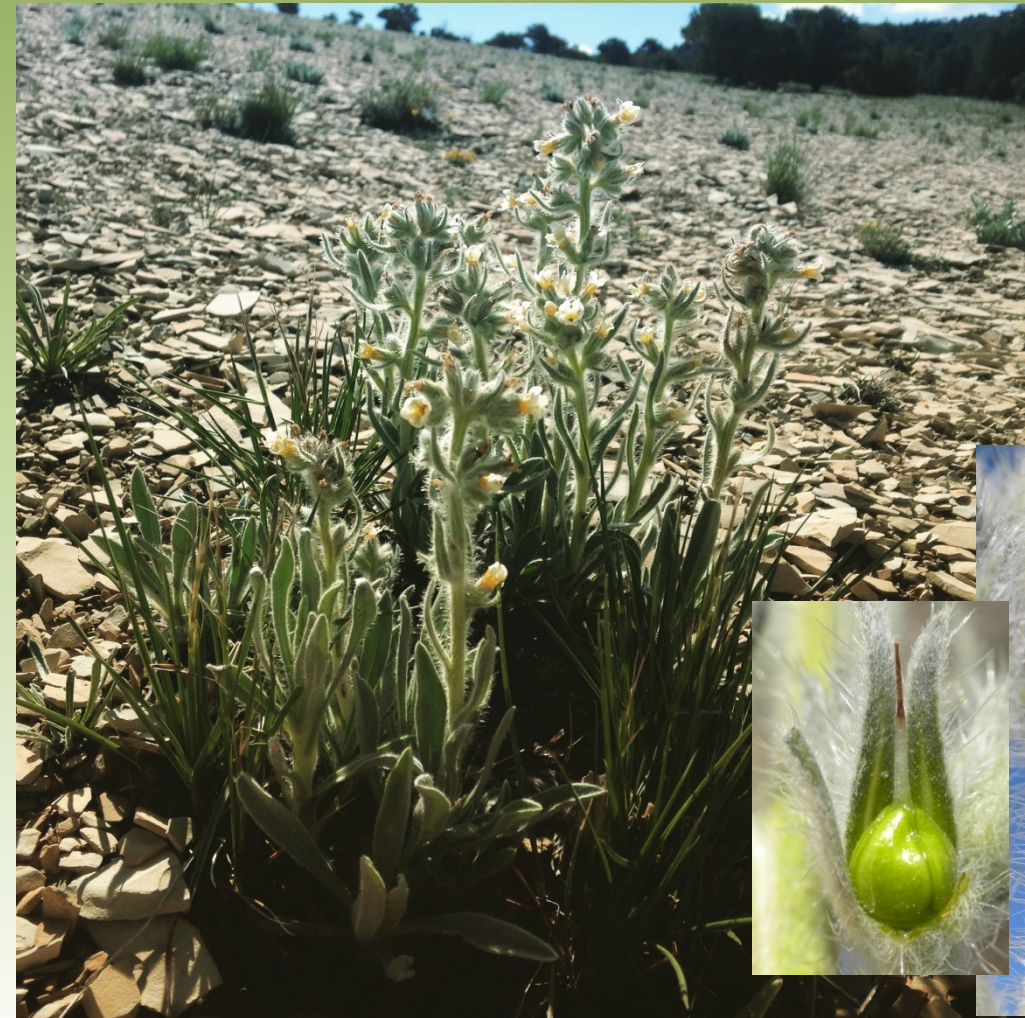


Eastern Green River Shale

- Barneby cryptanth
- Graham cryptanth
- Graham penstemon
- White River penstemon
- Shrubby reed-mustard
- Clay reed-mustard



Barneby catseye (*Cryptantha barnebyi*)



Photos by Sheryl Goodrich, Matt Lewis

Graham catseye (*Cryptantha grahamii*)



Photos by [Cristel Goodrich](#), USFS



Graham penstemon (*Penstemon grahamii*)



White River penstemon

(*Penstemon albifluvis*)



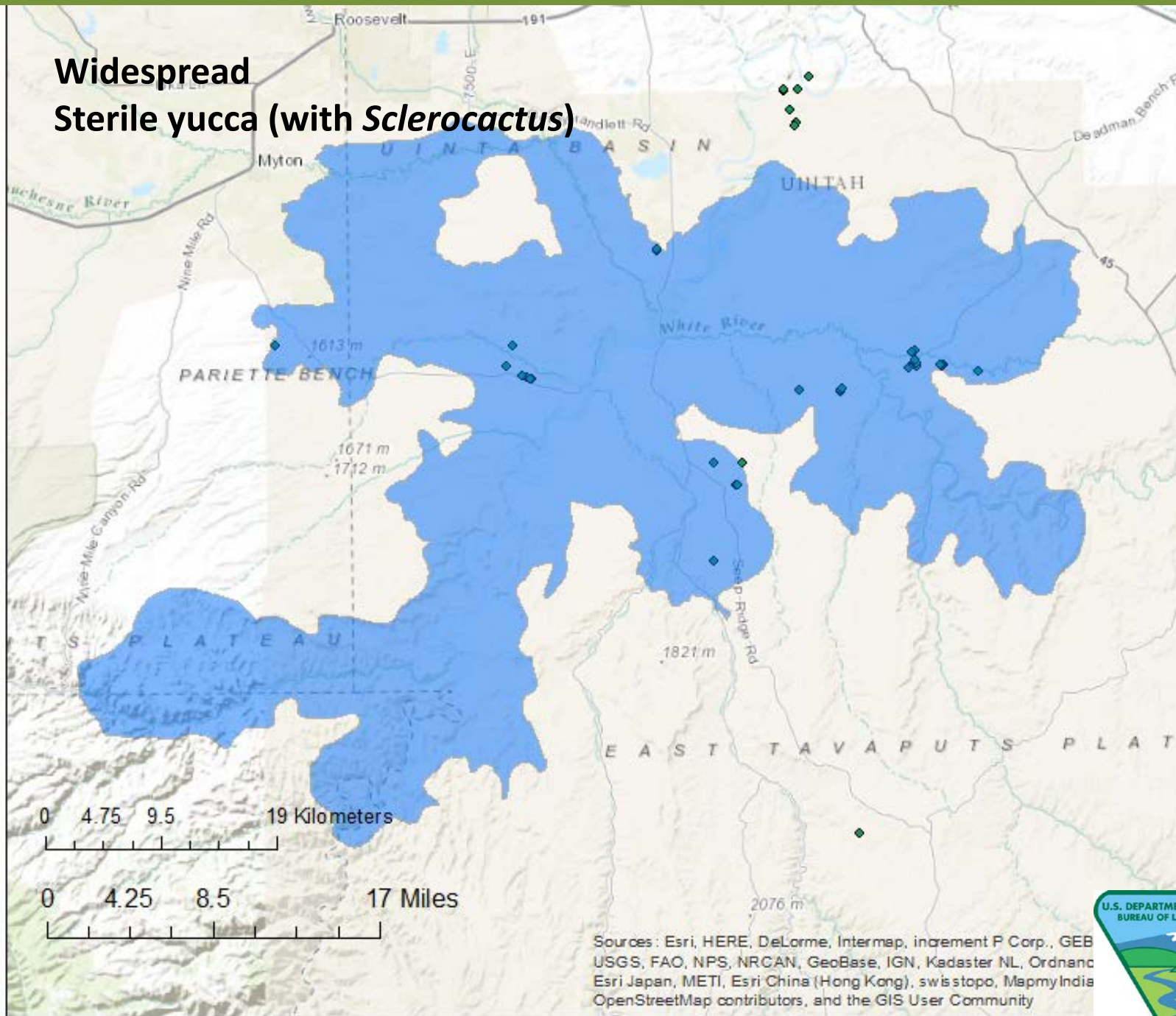
Shrubby reed-mustard (*Hesperidanthus suffrutescens*)



Clay reed-mustard (*Hesperidanthus argillaceus*)



Widespread Sterile yucca (with *Sclerocactus*)



Sources: Esri, HERE, DeLorme, Intermap, increment P Corp., GEB USGS, FAO, NPS, NRCAN, GeoBase, IGN, Kadaster NL, Ordnance Esri Japan, METI, Esri China (Hong Kong), swis stopo, MapmyIndia OpenStreetMap contributors, and the GIS User Community



Sterile yucca (*Yucca sterilis*)

Strongly rhizomatous
Clone forming
Apparently sterile
Leaves narrow, thin, flexible
Marginal fibers little exfoliating
Sandy places



Photos by Sherel Goodrich, USFS



Uinta Basin hookless cactus

(*Sclerocactus wetlandicus*)

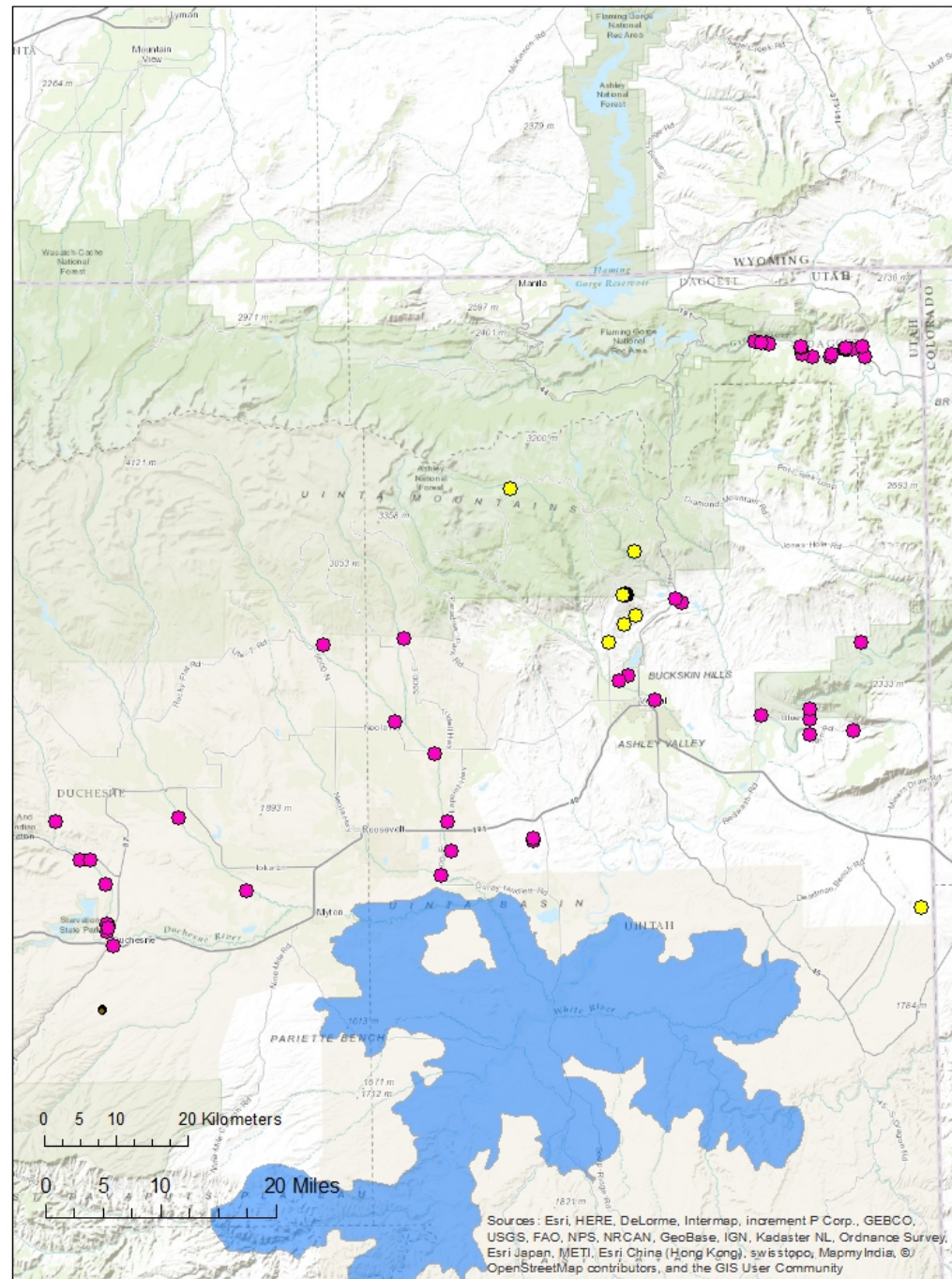


Pariette cactus (*Sclerocactus brevispinus*)



SE Flank Uinta mtns

Ute ladies'-tresses
Huber lepidium



Ute ladies'-tresses (*Spiranthes diluvialis*)



Photo by Jim Spencer, NRCS



Huber lepidium (*Lepidium huberii*)



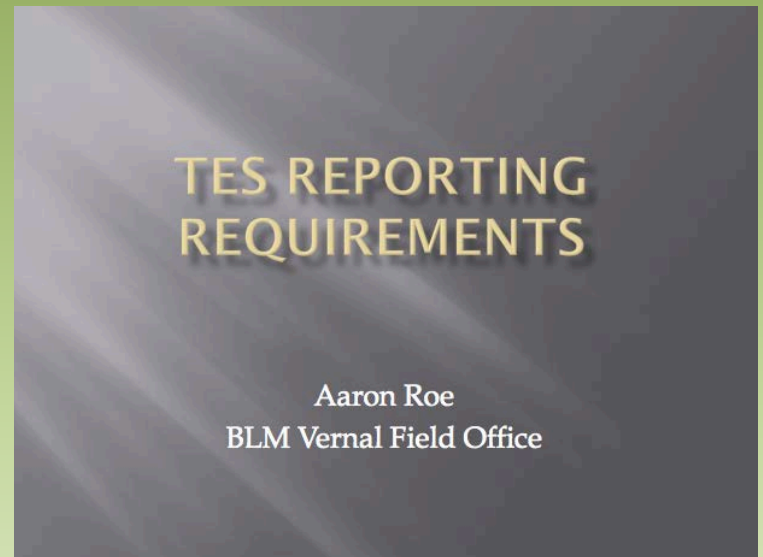
Photos by Sheryl Goodrich, USFS



On to Reporting Requirements!

Follow your previous report format (unless directed otherwise) or USFWS 2011 guidelines

If you have additional questions, contact us.



Additional Reporting Requirements

- For all species except *Sclerocactus*: fill out a field form and submit data directly to UNHP
- Include a copy of the UNHP forms in the BLM report
- Submit a digital copy of survey reports to BLM botanist as completed or at end of year, or both

Submitting Survey Data to BLM

- End of January (with reports)
 - ESRI shapefile
 - MS Excel Spreadsheet

Projection: UTM
Zone: 12 North
Units: Meters
Datum: NAD 1983

1/12/2016

In an effort to help standardize the BLM Vernal Field Office's GIS layer for threatened and endangered plants, we are requesting that the plant data you collect be submitted electronically in BOTH of the following formats:

Format 1: An ESRI Shapefile
AND
Format 2: A Microsoft Excel Spreadsheet.

Please submit your data in the following projection:

Projection: UTM
Zone: 12 North
Units: Meters
Datum: NAD 1983

If, for some reason, you cannot get your data into this projection, you must let us know the projection parameters of your data.

Minimum attribute table names/definitions/domains

The following attribute table items should be included as part of the shapefile and spreadsheet. This list includes the minimum attributes that we would like to receive.

SYMBOL (text, 12) Four letter plant code (first two letters of the genus and of the specific epithet)

LATIN_NAME (text, 50) Latin plant name

COMMON_NAME (text, 50) Common plant name

STATUS (text, 20) Status of the plant

Fisher
Bureau-sensitive
Candidate
de-listed_monitor
Endangered
Forest-sensitive
Mammom-sensitive
not_status
not listed
potential status
Threatened

SURVEYOR (text, 50) Name of person/company/organization who collected datum

SURV_DATE (date, 8) Date datum was collected

1/12/2016

METHOD (text, 10) Data collection method

Fisher
TD = Tablet Digiized
HD = Handi-up Digiized on-screen
GPS1 = High accuracy GPS unit <= 1 meter accuracy
GPS2 = Resource grade GPS unit 1-5 meter accuracy
GPS3 = Recreation grade GPS unit > 5 meter accuracy
OTH = Other

ACCURACY (text, 10) Estimated or known accuracy of the datum

PLANTS (number) Number of plants the point represents

Optional additional fields:

SEEDLING/JUVENILE/VEGETATIVE/FLOWERING/FRUITING (number)
Number of plants in each stage class at that location, if collected

NUMBER ALIVE (number) Number of living plants at that point location

NUMBER DEAD (number) Number of dead plants at that point location, if number of dead and alive plants are not reported, we will assume that the number reported in the "PLANTS" field are all alive.

COMMENTS (text, 100) Comments

Fields that must be included in the spreadsheet (with tabular data):

The following two fields are required with tabular data so that the points may be displayed based on the rating/monitoring values.

EASTING East/West coordinate value, in UTM, zone 12, meters, NAD 1983

NORTHING North/South coordinate value, in UTM, zone 12, meters, NAD 1983

Questions?

Matt Lewis Botanist BLM - Vernal Field Office 435-791-4427 mlewis@blm.gov	Jessi Branson Botanist BLM - Vernal Field Office 435-781-4448 jbranson@blm.gov	Kyle Smith GIS Specialist BLM - Vernal Field Office 435-781-4402 ksmith@blm.gov
---	--	---

Minimum Attributes

SYMBOL (text, 12) Four letter plant code (first two letters of the genus and of the specific epithet)

LATIN_NAME (text, 50) Latin plant name

COMMON_NAME (text, 50) Common plant name

STATUS (text, 20) Status of the plant

Values

Bureau-sensitive

Candidate

de-listed, monitor

Endangered

Forest-sensitive

Monument-sensitive

non-status

not listed

potential status

Threatened

SURVEYOR (text, 50) Name of person/company/organization who collected datum

SURV_DATE (date, 8) Date datum was collected

METHOD (text, 10) Data collection method

Values

TD = Tablet Digitized

HD = Heads-up Digitized on-screen

GPS1 = High accuracy GPS unit < 1 meter accuracy

GPS2 = Resource grade GPS unit 1-5 meter accuracy

GPS3 = Recreation grade GPS unit > 5 meter accuracy

OTH = Other

ACCURACY (text, 10) Estimated or known accuracy of the datum

PLANTS (number) Number of plants the point represents

Optional Additional Fields

SEEDLING/JUVENILE/VEGETATIVE/FLOWERING/FRUITING (number) Number of plants in each stage class at that location, if collected

NUMBER ALIVE (number) Number of living plants at that point location

NUMBER DEAD (number) Number of dead plants at that point location; if number of dead and alive plants are not reported, we will assume that the number reported in the “PLANTS” field are all alive

COMMENTS (text, 100) Comments

Required Spreadsheet Fields

EASTING East/West coordinate value, in UTM, zone 12, meters, NAD 1983

NORTHING North/South coordinate value, in UTM, zone 12, meters, NAD 1983

