

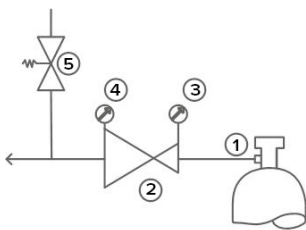
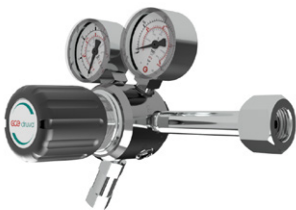
# CPLAVSJ | CPLAESJ – DRUVA® PUR CYLINDER REGULATOR

CYLINDER REGULATOR | PURE LINE (BRASS CHROME PLATED) | 20 m³ SERIES | ABSOLUT PRESSURE RANGE | SINGLE STAGE | 6-PORT VERSION



This single-stage cylinder pressure regulator is used in gas supply systems for pure, inert, flammable, oxidising gases and gas mixtures up to gas purity 6.0. It is not usable for corrosive and / or toxic gases and their mixtures.

**Option-00:**



- 1 – Cylinder connection
- 2 – Pressure regulator
- 3 – Inlet pressure gauge
- 4 – Outlet pressure gauge
- 5 – Relief valve

*Dimension for standard version see technical drawing*

**SPECIAL FEATURES:**

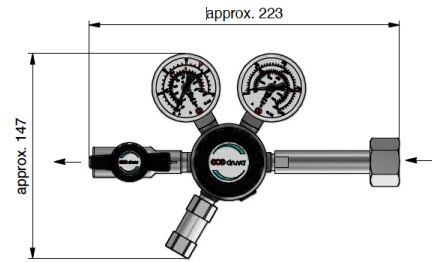
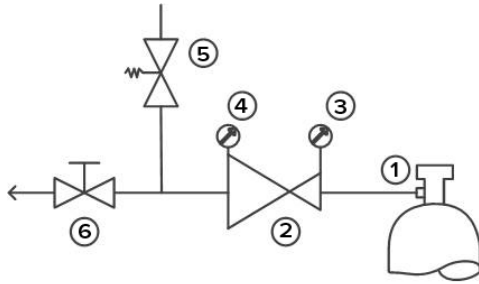
- > Hastelloy diaphragm tightening system to atmosphere
- > Available with several options (shut-off valve, regulating valve, purge valve, etc.), see drawing
- > Available with several international cylinder connections, see drawing
- > Compact design
- > Excellent pressure adjustment
- > Designed and approved regarding ISO 7291
- > Relief valve in delivery pressure side available
- > Electrostatic chargeability test
  - Fulfills requirements according to ISO 80079-36; IEC TS 60079-32-1 and German TRGS 727
  - Usable in EX- areas zones 1 and 2 for gases with explosion risk group I; IIA; IIB; IIC

TECHNICAL DATA	
<b>Working temperature:</b>	-20 °C to +60 °C
<b>Inlet port:</b>	Cylinder connection according to national / international directives
<b>Leakage rate seat:</b>	<5x10 <sup>-6</sup> mbar l/s (Helium)
<b>Leakage rate outside:</b>	<1x10 <sup>-9</sup> mbar l/s (Helium)
<b>Filter:</b>	1x for inlet 1x for each outlet
<b>Weight:</b>	2,46 kg
<b>Flow nominal:</b>	3 m³/h (N2)
<b>Material gas wettet parts:</b>	
<b>Regulator body:</b>	Brass chrome plated
<b>Regulator diaphragm:</b>	Hastelloy
<b>Regulator seat:</b>	CPLAVSJ-Version: FKM CPLAESJ-Version: EPDM
<b>Relief valve seat:</b>	CPLAVSJ-Version: FKM CPLAESJ-Version: EPDM
<b>Regulator poppet:</b>	Brass
<b>Pressure rates cylinder regulator:</b>	
<b>Max. inlet pressure</b>	12 bar
<b>Delivery pressure</b>	2/ 3 bar abs
<b>Pressure gauges rates (pressure rates):</b>	-1 bar till 1,5 bar (2 bar abs)/ -1 till 5 bar (3 bar abs)
<b>Contact gauges available – please contact us</b>	
<b>Cracking pressure relief valves:</b>	1,5 bar (2 bar abs)/ 3,1 Bar (3 bar abs)
<b>Test in production:</b>	Pressure test with Helium of each item
	Seat leakage test with Helium of each item
	Helium leak test of each regulator against atmosphere
	Test of functionality of each item
<b>Approvals during development:</b>	Type test in accordance with ISO 7291
	Additional life cycle test
	Electrostatic chargeability test <ul style="list-style-type: none"> <li>• Fulfills requirements according to ISO 80070-36; IEC TS 60079-32-1 and German TRGS 727</li> <li>• Usable in EX-areas zones 1 and 2 for gases with explosion risk group I; IIA; IIB; IIC</li> </ul>

OPTIONEN DES FLASCHENDRUCKREGLER CPLAVSJ | CPLAESJ:

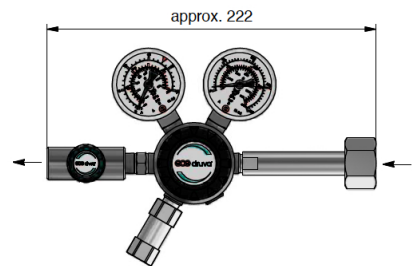
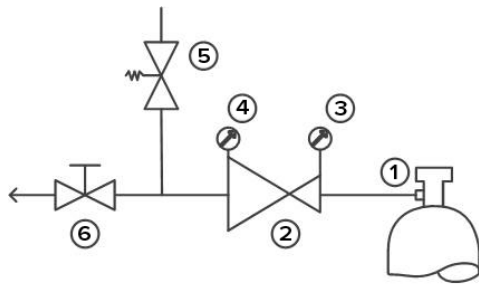
Option-**OS**: with low pressure shut-off valve

- 1 – Cylinder connection
- 2 – Pressure regulator
- 3 – Inlet pressure gauge
- 4 – Outlet pressure gauge
- 5 – Relief valve
- 6 – Outlet shut-off valve



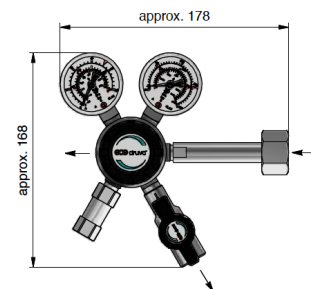
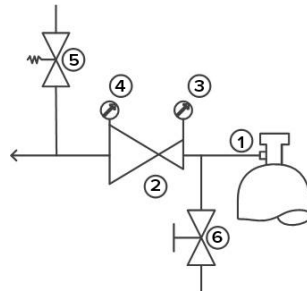
Option-**OR**: with low pressure regulating valve

- 1 – Cylinder connection
- 2 – Pressure regulator
- 3 – Inlet pressure gauge
- 4 – Outlet pressure gauge
- 5 – Relief valve
- 6 – Outlet regulating valve



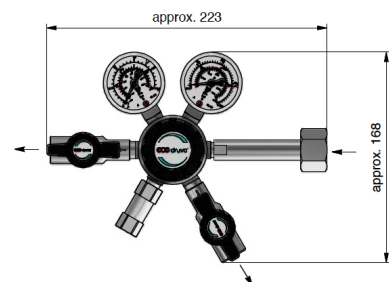
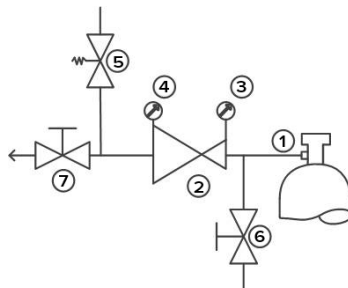
Option-**P0**: with high pressure purge valve

- 1 – Cylinder connection
- 2 – Pressure regulator
- 3 – Inlet pressure gauge
- 4 – Outlet pressure gauge
- 5 – Relief valve
- 6 – Purge valve



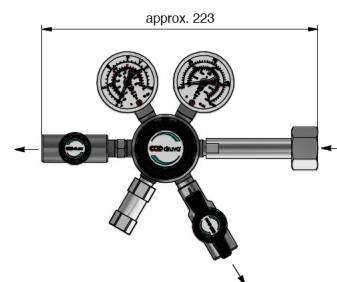
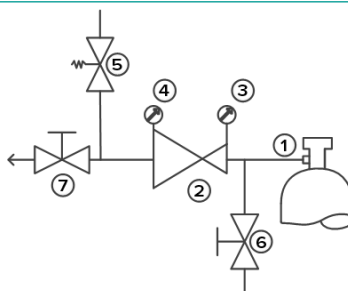
Option-**PS**: with high pressure purge valve & low pressure shut-off valve

- 1 – Cylinder connection
- 2 – Pressure regulator
- 3 – Inlet pressure gauge
- 4 – Outlet pressure gauge
- 5 – Relief valve
- 6 – Purge valve
- 7 – Outlet shut-off valve

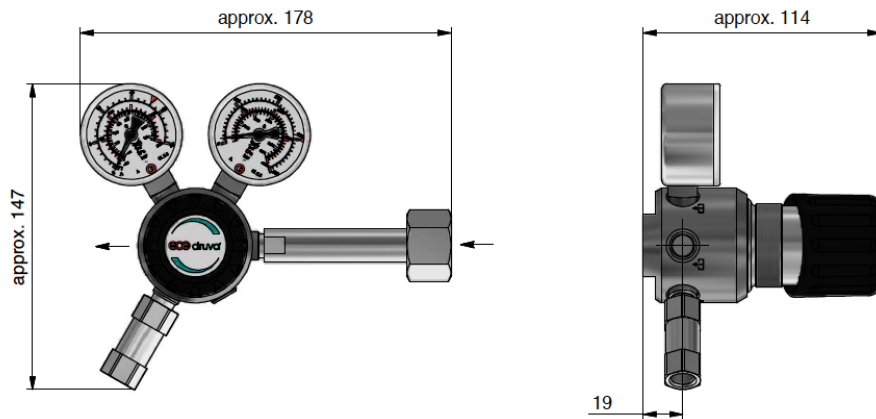
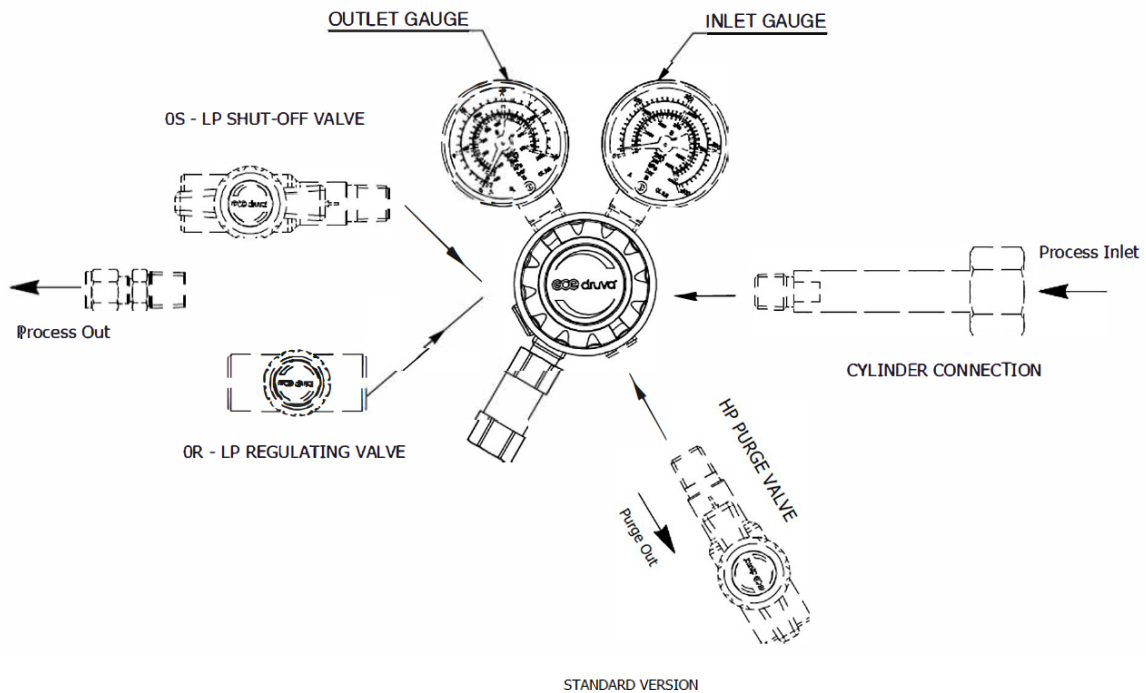


Option-**PR**: with high pressure purge valve & low pressure regulating valve

- 1 – Cylinder connection
- 2 – Pressure regulator
- 3 – Inlet pressure gauge
- 4 – Outlet pressure gauge
- 5 – Relief valve
- 6 – Purge valve
- 7 – Outlet regulating valve



TECHNICAL DRAWING:



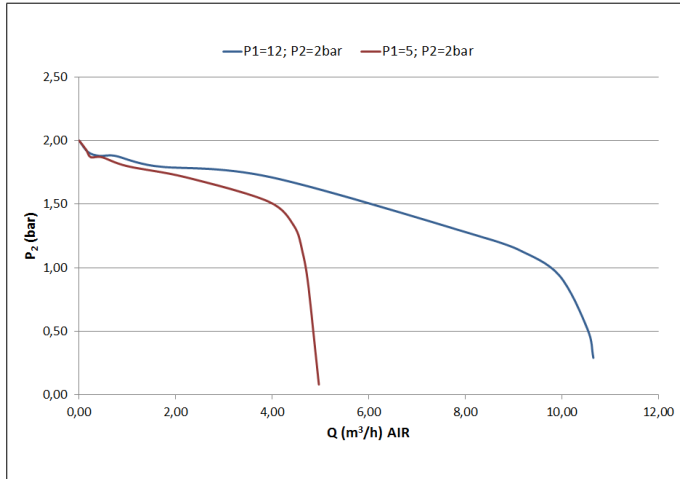
List of possible cylinder connections

- |                             |                              |                              |
|-----------------------------|------------------------------|------------------------------|
| N14F00 - NPT1/4" female     | DI005W - DIN477 No 5 Wrench  | DI054H - DIN477 No 54 Hand   |
| BS003W - BSI341-3 Wrench    | DI006H - DIN477 No 6 Hand    | DI054W - DIN477 No 54 Wrench |
| BS004W - BSI341-4 Wrench    | DI006W - DIN477 No 6 Wrench  | DI057W - DIN477 No 57 Wrench |
| BS008W - BSI341-8 Wrench    | DI007W - DIN477 No 7 Wrench  | DI059W - DIN477 No 59 Wrench |
| BS010W - BSI341-10 Wrench   | DI008W - DIN477 No 8 Wrench  | NELU1W - NEN LU1 Wrench      |
| BS014W - BSI341-14 Wrench   | DI009W - DIN477 No 9 Wrench  | NELU4W - NEN LU4 Wrench      |
| CG170W - CGA No 170 Wrench  | DI010H - DIN477 No 10 Hand   | NERI2W - NEN RI2 Wrench      |
| CG330W - CGA No 330 Wrench  | DI010W - DIN477 No 10 Wrench | NERU1W - NEN RU1 Wrench      |
| CG580W - CGA No 580 Wrench  | DI011W - DIN477 No 11 Wrench | NERU3W - NEN RU3 Wrench      |
| CG590W - CGA No 590 Wrench  | DI013W - DIN477 No 13 Wrench | NF00CW - AFNOR Type C Wrench |
| DI001H - DIN477 No 1 Hand   | DI014H - DIN477 No 14 Hand   | NF00FW - AFNOR Type F Wrench |
| DI001W - DIN477 No 1 Wrench | DI014W - DIN477 No 14 Wrench | other connections on request |

List of possible connections

- |  |   |   |
|--|---|---|
| N14F - NPT1/4" female                    | IX2B - Compression fitting ø 1/8" Brass | H04B - Hose nozzle 4,8 mm Brass   |
| M03B - Compression fitting ø 3 MM Brass  | IX4B - Compression fitting ø 1/4" Brass | H06B - Hose nozzle 6,4 mm Brass   |
| M06B - Compression fitting ø 6 MM Brass  | IX6B - Compression fitting ø 3/8" Brass | H08B - Hose nozzle 8,0 mm Brass   |
| M08B - Compression fitting ø 8 MM Brass  | IX8B - Compression fitting ø 1/2" Brass | H04S - Hose nozzle 4,8 mm SST   |
| M10B - Compression fitting ø 10 MM Brass | IX2S - Compression fitting ø 1/8" SST   | H06S - Hose nozzle 6,4 mm SST   |
| M12B - Compression fitting ø 10 MM Brass | IX4S - Compression fitting ø 1/4" SST   | H08S - Hose nozzle 8,0 mm SST   |
| M03S - Compression fitting ø 3 MM SST    | IX6S - Compression fitting ø 3/8" SST   | <b>Availability of brass fittings depending on pressure &amp; size.</b> |
| M06S - Compression fitting ø 6 MM SST    | IX8S - Compression fitting ø 1/2" SST   | <b>Pay attention to the maximum approved pressure of your pipework.</b> |
| M08S - Compression fitting ø 8 MM SST    |   | <b>Hose nozzle max. 15 bar.</b>   |
| M10S - Compression fitting ø 10 MM SST   |   |   |
| M12S - Compression fitting ø 12 MM SST   |   |   |

FLOW CURVE:



ORDER CODE:

Example Cylinder Regulator | PUR Linie | Brass chrome Plated | Low Flow | Absolute Pressure | Single Stage | 6-Port Version | Inlet Right

CPLAVSJ CPLAESJ	R	00	D1	AX	I1	BT	N14F (1/4" NPT female)	N14F (1/4" NPT female)
	Porting	Options	Inlet pressure	Outlet pressure	Inlet gauge	Outlet gauge	Cylinder connection	Process outlet connection
R	Inlet right	00 No option	D1 12 bar	AX 2 bar (abs)	00 Without gauge 1/4" NPT female	00 Without gauge 1/4" NPT female	possible connections  see technical drawing	possible connections  see technical drawing
		0S LP* Shut-off valve		BX 3 bar (abs)	01 Without (plugged)	01 Without (plugged)		
		0R LP* Regulating valve			BT Bourdon Tube gauge	BT Bourdon Tube gauge		
		P0 HP** Purge valve			I1 Inductiv contact gauge I1			
		PS HP** Purge- and LP* Shut-off valve			R5 Reed contact gauge R5			
		PR HP** Purge- and LP* Regulating valve						

Order code (as described above) without special characters or spaces! Complete Order Code **CPLAVSJROOD1AXI1BTN14FN14F**

\* LP = Low pressure

\*\* HP = High pressure

