



# Ecological, behavioral, and phylogenetic influences on the evolution of dorsal color pattern in geckos\*

William L. Allen,<sup>1,2</sup> Nickolas Moreno,<sup>3</sup> Tony Gamble,<sup>4,5,6</sup> and Ylenia Chiari<sup>3,7,8</sup>

<sup>1</sup>Department of Biosciences, Swansea University, Swansea, UK SA2 8PP

<sup>2</sup>E-mail: W.L.Allen@swansea.ac.uk

<sup>3</sup>Department of Biology, University of South Alabama, Mobile, Alabama 36688

<sup>4</sup>Department of Biological Sciences, Marquette University, Milwaukee, Wisconsin 53233

<sup>5</sup>Bell Museum of Natural History, University of Minnesota, Saint Paul, Minnesota 55113

<sup>6</sup>Milwaukee Public Museum, Milwaukee, Wisconsin 53233

<sup>7</sup>Department of Biology, George Mason University, Manassas, Virginia 20110

<sup>8</sup>E-mail: ychiari@gmu.edu

Received May 31, 2019

Accepted December 15, 2019

The dorsal surfaces of many taxonomic groups often feature repetitive pattern elements consisting of stripes, spots, or bands. Here, we investigate how distinct categories of camouflage pattern work by relating them to ecological and behavioral traits in 439 species of gecko. We use phylogenetic comparative methods to test outstanding hypotheses based on camouflage theory and research in other taxa. We found that bands are associated with nocturnal activity, suggesting bands provide effective camouflage for motionless geckos resting in refugia during the day. A predicted association between stripes and diurnal activity was not supported, suggesting that stripes do not work via dazzle camouflage mechanisms in geckos. This, along with a lack of support for our prediction that plain patterning should be associated with open habitats, suggests that similar camouflage patterns do not work in consistent ways across taxa. We also found that plain and striped lineages frequently switched between using open or closed habitats, whereas spotted lineages rarely transitioned. This suggests that pattern categories differ in how specialized or generalized their camouflage is. This result has ramifications for theory on how camouflage compromises to background heterogeneity and how camouflage pattern might influence evolutionary trajectories.

**KEY WORDS:** Animal coloration, animal patterning, camouflage, compromise camouflage, functional morphology, lizards.

The diversity of animal color patterns and their ease of observation have made this trait a popular subject for comparative investigations into the adaptive evolution of characters (Protas and Patel 2008; Cuthill et al. 2017; Endler and Mappes 2017). The adaptive causes of variation in camouflage coloration within species have been widely studied (reviewed in Protas and Patel 2008; Cuthill et al. 2017; Endler and Mappes 2017); however, species-level variation in camouflage is not well understood. In vertebrates, large comparative studies on the drivers of camouflage diversity

have only been conducted in a few groups (e.g., Ortolani 1999; Stoddard and Prum 2008; Wollenberg and Measey 2009; Allen et al. 2013; Halperin et al. 2017). There is a pressing need for macroevolutionary studies of animal coloration that aim to understand how different selection pressures influence the evolution of different color pattern phenotypes (Caro and Allen 2017). Here, we use phylogenetic comparative approaches to investigate how the evolution of major categories of camouflage pattern such as stripes, spots, and bands relate to differences in species' ecology and behavior to find out why there is diversity in camouflage pattern phenotype. Do key differences between species in habitat and

\*This article corresponds to H. Gruson. 2020. Digest: Evolution of camouflage patterns in geckos. *Evolution*. <https://doi.org/10.1111/evo.13999>.

activity time select for different camouflage patterns? This knowledge is essential for addressing outstanding questions in camouflage theory, such as whether some patterns make inherently better “specialist” camouflage suited to one particular niche, or if some patterns provide “generalist” camouflage suited to species that occupy a wide variety of niches (Ruxton et al. 2018).

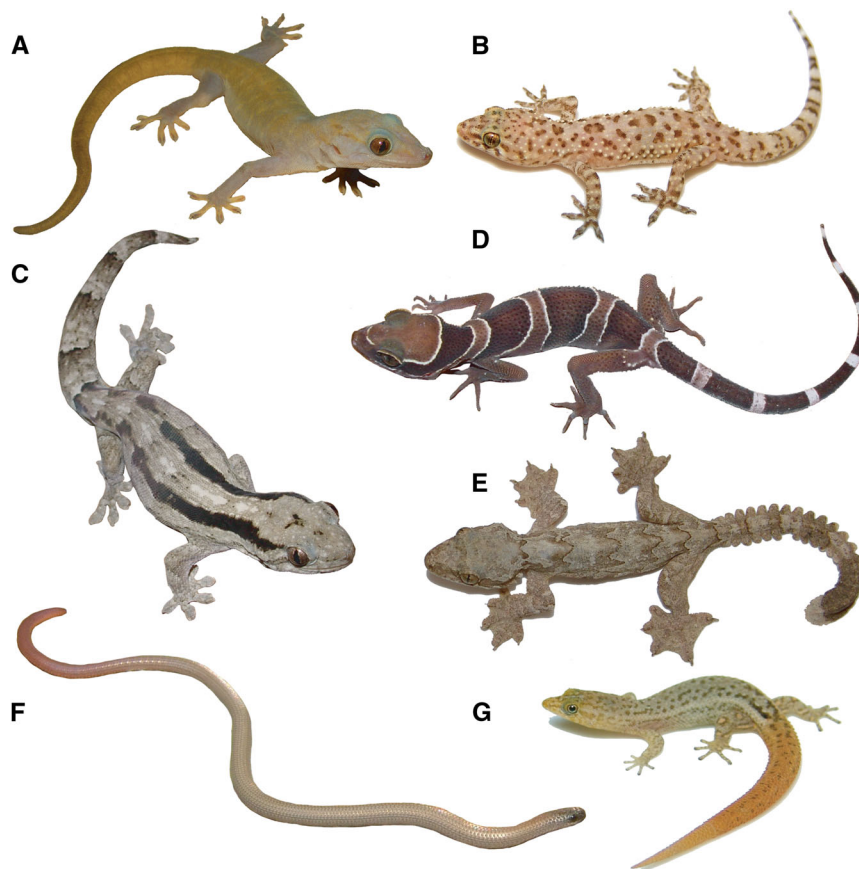
In this work, we study these questions in geckos, a group of about 1744 species of squamate reptiles. Geckos present an ideal opportunity to understand camouflage pattern diversity at macroevolutionary scales for two main reasons. First, we can confidently assume that dorsal pigmentation has been selected for a camouflage rather than signaling (e.g., warning coloration) function. The dorsal color gamut is almost entirely restricted to earthy and neutral tones (Fig. 1), with the exception of a few green arboreal taxa (e.g., genera *Naultinus* and *Phelsuma*), consistent with background matching camouflage. Experimental studies also support a camouflage function of gecko dorsal pigmentation (Vroonen et al. 2012; Ito et al. 2013; Fulgione et al. 2019), and camouflage is the primary function of dorsal pigmentation in other squamate groups (Allen et al. 2013; Marshall et al. 2016). Except for the genus *Strophurus* (Nielsen et al. 2016), geckos are not known to possess significant secondary defenses that might support an aposematic strategy. Furthermore, coloration used for intraspecific signaling in geckos has only been identified on the head (Harmon and Gibson 2006; Nielsen et al. 2016), throat (Blouin-Demers et al. 2013), tail (Alonso et al. 2010; Nielsen et al. 2016), and through posture and movement for visual display (Marcellini 1977). Geckos are likely to benefit from camouflage through increased foraging success, but the primary selection pressure for camouflage is thought to be protection against visually oriented predators such as birds-of-prey, snakes, and mammalian carnivores (Ito et al. 2013). Being able to assume geckos’ dorsal patterns function as camouflage facilitates investigation of how camouflage pattern diversity evolves and works by reducing noise that would be introduced when different selection pressures for non-camouflage functions lead to convergent patterns (Allen et al. 2013).

The second reason for investigating our research questions in geckos is their varied dorsal patterning, with species presenting spots, stripes, and bands (Fig. 1), and diverse ecology, and behavior. About 30% of gecko species are mostly active during the day (diurnal), whereas other species are mostly active after sunset and in the first hours of the night (nocturnal; Gamble et al. 2015). Geckos are globally distributed and occur in a variety of distinct habitats, including desert and sandy areas, trees and forests, urban environments, leaf litter, and rocky habitats. This species-level variation in camouflage pattern and hypothesized predictors of pattern variation makes the group ideal for comparative investigations. In geckos, the relationship between ecology and color pattern has only been investigated within single species

or a few closely related species (Gübitz et al. 2000; Harmon and Gibson 2006; Saenko et al. 2013; Nielsen et al. 2016). At broader taxonomic scales, previous comparative studies of lizard coloration have excluded geckos on the basis of their generally nocturnal habits (Halperin et al. 2017; Murali and Kodandaramaiah 2018). We therefore do not yet know how pattern phenotype has responded to different selection regimes across geckos.

Although the majority of gecko species are nocturnal, multiple lineages have reverted to diurnality (Gamble et al. 2015). This makes geckos an excellent group to test predicted relationships between activity time and camouflage pattern, which have not yet been thoroughly investigated. Predation on lizards by visually oriented predators is expected to be higher during the day than at night (Poulin et al. 2001). To avoid predation, nocturnal geckos will use refugia and minimize movement during the day. We therefore predict that nocturnal geckos will utilize bands as camouflage because bands should be particularly effective background matching camouflage in typical refugia, such as rocky crevices and leaf litter, which have varying depth profiles that create high contrast shadows (Egan et al. 2016). Banded patterns should also provide better disruptive camouflage as more pattern elements intersect the outline. Disruptive camouflage through edge-intersecting patterns is an effective anti-predator strategy for motionless prey, but fails when prey moves (Hall et al. 2013). We therefore predict that diurnally active geckos, who are more likely to be moving when seen by diurnal visually oriented predators, will utilize camouflage patterns thought to be effective during movement. Several lines of experimental evidence suggest that longitudinal stripes fulfill this criteria, providing effective dazzle camouflage that creates in predators an erroneous perception of the speed or trajectory of moving prey, facilitating escape (Scott-Samuel et al. 2011; Murali and Kodandaramaiah 2016). Because longitudinal stripes are more common on diurnal non-gekkotan squamates (Murali et al. 2018), here we test whether this is also the case in geckos. Support for these predictions would be good evidence that different categories of camouflage pattern have key mechanistic differences, and that these differences are maintained across different taxonomic groups.

Similar to variation in activity time, gecko habitat diversity also enables investigation of whether there are broad evolutionary relationships in how habitat structure relates to camouflage patterning, as has been observed for other reptile taxa (Allen et al. 2013; Halperin et al. 2017; Murali and Kodandaramaiah 2018), to determine whether there are any general “rules” about how habitat influences camouflage pattern. To be as general as possible, we contrast open habitats, such as deserts, with closed habitats, such as forests. This has been shown to be a primary driver of camouflage diversity in other taxa. For example, felids inhabiting open environments are more likely to be plain (Allen et al. 2011). In color changing animals, dorsal patterning emerges



**Figure 1.** Dorsal pattern and color in several exemplar gecko species. (A) *Gekko badenii*, plain pattern; (B) *Hemidactylus turcicus*, spotted; (C) *Homopholis arnoldi*, striped; (D) *Cyrtodactylus cf. intermedius*, banded; (E) *Ptychozoon kuhli*, a highly cryptic species with interdigital webbing and skin flaps that aid in concealment; (F) *Aprasia parapulchella*, a limbless pygopodid with a pinkish tail; (G) *Sphaerodactylus townsendi*, a diurnal gecko with an orange tail.

against darker backgrounds as would be found in closed habitats (Kang et al. 2016). The likely explanation for these results is background matching that selects for plain patterns in open habitats that have more visually homogenous backgrounds, whereas patterning evolves in more heterogeneous closed environments characterized by a variety of different surfaces and dappled illumination. We therefore predict plain patterning to be associated with open habitats in geckos and patterning with closed habitats.

We additionally investigate whether particular categories of color pattern are selected as flexible solutions that are effective in a wide variety of habitat types, while other patterns are more specialized and only effective in particular habitats. Optimization of camouflage patterning against backgrounds that vary in appearance is an area of active theoretical and empirical development (Bond and Kamil 2006; Michalis et al. 2017), but it is rarely considered whether some patterns are inherently better “general-purpose” coloration than others. In theory general purpose camouflage should evolve when animals utilize a wide variety of habitats with different background appearances (Ruxton et al. 2018). Generalist camouflage pattern phenotypes should be those that

approximate the spatial pattern statistics across a variety of backgrounds. While some backgrounds such as vertical or horizontal vegetation feature oriented pattern elements, most gecko habitats are on average isotropic (e.g., sand, gravel, leaf litter), particularly when gecko movement is factored in. Therefore, we predict that geckos that inhabit multiple habitats will more likely be plain or feature isotropic spots, whereas more specialist geckos inhabiting a single habitat will more likely have anisotropic patterns (stripes or bands). This hypothesis is supported in snakes, where species with banded patterns tend to be habitat specialists (Allen et al. 2013). In this work, we therefore ask if this association is more general in squamate reptiles.

To address these questions, we carry out the first large-scale comparative analyses of 439 species (about 25% of all gecko species) belonging to all seven gekkotan families to understand how habitat type, activity time, and habitat specialism influence the diversity of gecko dorsal color patterns. In addition to testing our main hypotheses, we conduct an exploratory analysis of all pattern categories and eco-behavioral predictors to investigate further relationships that might inspire future studies.

## Materials and Methods

### SPECIES SELECTION AND PATTERN CLASSIFICATION

We developed a novel card sorting task to quantify gecko patterns to overcome practical issues associated with computational analysis of animal patterns for large comparative projects (Supporting Information 1). Beginning with all the species included in a recent phylogeny of geckos (Pyron et al. 2013), we built a gecko pattern dataset comprised of images available freely on the web. We followed a similar approach to Kelley et al. (2013) and checked a minimum of three images per species among those found through a Google Images search with the binomial name of the species (or synonym names) as the search term. Because geckos may have polymorphic coloration, including pattern polymorphisms existing between sexes and age classes (Johnston and Bouskila 2007; Booth 2008; Regalado 2012), two authors (N.M. and Y.C.) screened all images publicly available on the web for each species to select the one that showed the best view of the dorsal pattern for the most common pattern of adult males, in order to remove pattern variation due to ontogeny or sexual differences. To help ensure reliable species identification, we preferentially selected images taken by one of the authors (T.G.) or hosted on well-known reliable herpetological websites, including The Reptile Database, ARKive, and CalPhotos. A link to each image is available in Supporting Information 2 and images are also available on request. The images initially selected by two of us were then further checked by one of the other authors (T.G.), who has the most extensive expertise of gecko identification and color patterning among the authors. If suitable images could not be found for a species, or could not be reliably identified, we did not include the species. Our final sample included an image of 439 species. Selected images were resized to the same length while keeping the original aspect ratio and printed in color on a 13 cm length cardstock. No cropping of the image or image adjustment was carried out except for the length resizing, so the height of the printed images could be variable and the relative size of the gecko on each card could differ (Supporting Information 3).

In the card sorting task, we allowed observers to freely sort patterns on a continuous pattern scale from transversely striped species (“bands”) at one end of the scale, through spotted species and then longitudinally striped species (“stripes”) with increased physical distance between images representing increased pattern difference. This quantification of finer similarities and differences between phenotypes enabled us to validate the categorization of patterns into distinct groups. Cards were sorted via a two-stage process. First two groups of seven observers each worked as independent groups, with the instruction to focus only on dorsal pattern (pattern occurring between the front and rear legs of each individual) and organize the images on each card into four discrete pattern categories (stripes, spots, bands, and plain

patterns, which corresponds to no pattern, Fig. 1) that were then piled on a table in a plain-band-spot-stripe order. In the few cases in which species had more than one category of pattern (e.g., spots and stripes), observers were asked to classify the card based on which pattern was visually more prominent. Image sorting from these two groups produced one pile with cards, for which both groups agreed on card classification in plain-band-spot-stripe order, with plain cards on the top and one pile consisting of cards that were assigned to different pattern category by the two groups (unassigned cards). We did not record which card belonged to which pattern for stage 1 observers, except for cards with plain patterns, which were not given to the stage two observers. The pile of band-spot-stripe and the one with discordant classification cards were combined into a single pile, with the unassigned cards from the stage 1 observers after the pile of cards in order band-spot-stripe. This single pile of cards was then given to seven additional observers in turn who each worked individually to arrange photos on a one-dimensional scale. Stage 2 observers did not know how cards were ordered in the pile nor where one pattern category ended and another started according to stage 1 observers. The reason for the first stage was to make the task of arranging such a large number of images more tractable for stage 2 observers by having similar patterns already initially grouped together. The stage two observers however were free to disagree with the stage one observers’ assessments and place them on the scale wherever they thought most appropriate. The seven stage two observers were instructed to place the cards along a line running down a hallway (44 m in length) in the band-spot-stripe order, with position within this constraint judged as they saw fit, without specific instruction on how each pattern should look for each category. Observers were allowed to overlap photos or leave space between photos to quantify perceptual difference (Fig. 2). This allowed observers significant freedom in determining what pattern attributes they considered perceptually most important, avoiding over-prescriptive instructions that produce classifications discordant with perceptually important variation.

When each observer had finished arranging the photos, they were then asked at what point on the scale the two pattern category boundaries lay (i.e., between bands and spots, and between spots and stripes), and these positions were recorded. The position of each image along the scale was then recorded using a tape measure and divided by the total length of the scale to give each image a continuous pattern score ranging from 0 to 1 for each observer. All observers were unfamiliar with the scientific aims of the study, except for one stage 2 observer, the author N.M. Each image was assigned to a pattern category based on the majority categorical classification (dataset available as Supporting Information 4). Interobserver reliability for the continuous pattern scores was assessed using intraclass correlation coefficients, and interobserver agreement for the categorical pattern judgments,





**Figure 2.** Printed cards organized along the 44 m long hallway. Left image: Cards as organized by one of the stage 2 observers. Right image: The relative position of each card was recorded using a tape measure.

was measured using Fleiss' kappa (Fleiss 1971). Additionally, to validate observers categorical classifications, we used k-means clustering ( $n = 3$  clusters) on the continuous pattern scores and compared clusters using Cohen's kappa (Cohen 1960). To test the hypothesis that anisotropic patterns should be more common in habitat specialists, we created a variable contrasting striped and banded geckos (0) with plain and spotted geckos (1).

### ECOLOGICAL AND BEHAVIORAL DATA

To study the relationship between color pattern and the time at which a species is mostly active (night or day), we used the data from Gamble et al. (2015) to classify all the species in the dataset as nocturnal (0) or diurnal (1). We collected information on habitat type(s) using online species descriptions and published information about each species. Specifically, data on habitat occurrence for each species were obtained using the following strategy: (1) we used data from IUCN Red List and published scientific papers whenever possible; (2) when data were not available from the IUCN Red List or published papers, we used herpetology websites, such as the "Australian Reptile Online Database"; (3) if the information could not be found in either of these resources, we used field guides or general biodiversity websites such as the Encyclopedia of Life. We only considered habitats in which species were most commonly found and not occasional occurrences. We classified habitats as sand (sand dune/desert), arid rock (rock outcrops or gravel plains in areas with sparse vegetation), shrub, forested rock (rock outcrops in forested areas), arboreal tree, and

leaf litter, following the general habitat type categories used by the IUCN when available or using common category descriptors found on species descriptions on scientific papers or on the web. Each species was assigned a value of 0 (absent) or 1 (present) for each habitat category. Using these scores, we also constructed a summary measure quantifying whether a species was more associated with open or closed habitats. Species were classified as occupying closed habitats (0) if they were present in more closed habitat types (leaf litter, forested rock, arboreal trees) than open habitat types (sand, arid rock); shrub habitats were considered intermediate and not included in this classification. Nine species were present in one open and one closed habitat. In these cases we further investigated the literature using the same sources to establish whether open or closed habits were preferred. All nine species had a preference for open habitats. Finally, species were classified as specialist or generalist based on whether they occupied a single habitat category only (e.g., arid rock uniquely) or more than one habitat category. We obtained habitat category and habitat generalism data for 369 species, of which 340 species had an open/closed score (the other 29 species were only found in shrubland).

### DATA ANALYSES

We used the *Discrete* function in BayesTraits version 3.0.1 (Meade and Pagel 2016), which implements Pagel's (1994) method to test for correlated evolution between two binary traits. The traits analyzed were the pattern categories (spot

vs. non-spot; stripe vs. non-stripe; band vs. non-band; plain vs. non-plain; isotropic pattern vs. anisotropic pattern) and categorical eco-behavioral traits (open vs. closed; generalist vs. non-generalist; diurnal vs. nocturnal). We tested each combination of pattern category and eco-behavioral trait for a total of 15 analyses. The *Discrete* function tests for correlated evolution between two binary traits by comparing the strength of evidence for a dependent model, where the transition rate of one trait from 0 to 1 and/or 1 to 0 is dependent on the state of the other trait (e.g., that transitions from plain patterning to spots are more frequent when a lineage is nocturnal than diurnal), to that for an independent model, where the transition rates between the states of each trait are unrelated. The independent model has four parameters (0-1 and 1-0 for both traits) and the dependent model has a maximum of eight parameters (0-1 and 1-0 for both traits when the state of the other trait is both 0 and 1). Support for the dependent model over the independent model was assessed by log Bayes Factors (BFs) greater than 2, which implies that the evolution of the two traits is linked, with the pattern of transition rates describing the strength and direction of the relationship (Pagel and Meade 2006).

Additionally, we used the *Multistate* function in BayesTraits to establish the rate of evolutionary transitions between the four pattern categories. To test for phylogenetic signal in the discrete traits, that is pattern categories and eco-behavioral traits, we used the *phylo.d* function in the R (R Core Team 2018) *caper* package version 1.0.1 (Orme et al. 2018) to calculate the D statistic (Fritz and Purvis, 2010) and test if each trait is conserved as expected under a Brownian model of trait evolution ( $D = 0$ ) or has evolved randomly ( $D = 1$ ). To run all comparative analyses, we used the squamate phylogeny of Pyron et al. (2013) to incorporate phylogenetic relationships between the species included in our dataset. The tree was scaled so branches had a mean length of 0.1 by multiplying branch lengths by 0.006514. This facilitates parameter estimation and interpretation in BayesTraits by avoiding all parameter values being very small (Meade and Pagel 2016). Full details on the MCMC procedure are provided in the Supporting Information 5.

As the BayesTraits *discrete* method can sometimes lead to erroneous interpretations when single evolutionary events have a dramatic effect on results (Maddison and FitzJohn 2014), we evaluated the robustness of our results using phylogenetic logistic regression (Ives and Garland 2009) using the *phylolm* function in the *phylolm* package in R (Tung Ho and Ané 2014; R Core Team 2018). This tests for linear relationships between pattern traits and the predictor variables, rather than complex trait relationships potentially identified by the BayesTraits method, but it provides a useful validation of any simple associations the *discrete* method identifies. To facilitate comparisons with the discrete results, we ran three separate models with habitat generalism, activity time, and habitat openness as individual predictors and the phylogeny

as a random effect. *P*-values were assessed using the Benjamini–Hochberg procedure (Benjamini and Hochberg 1995) to control the false discovery rate.

## Results

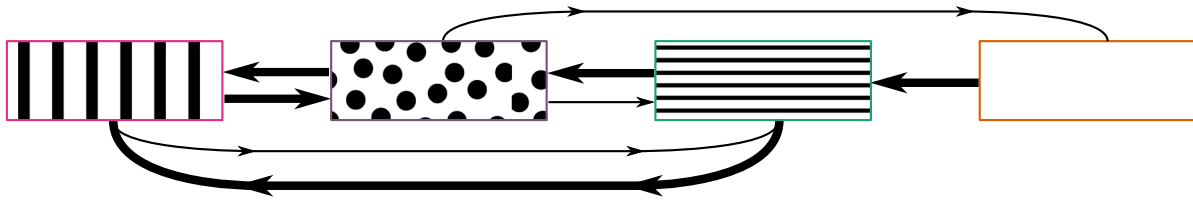
### GECKO PATTERNS

All stage two observers produced an overall similar pattern gradient. Interobserver reliability for the continuous pattern scores, measured by the intraclass correlation coefficient was 0.82, and interobserver agreement for the categorical pattern judgments, measured by Fleiss' kappa was 0.74. Agreement between observers' majority-rule categorical pattern classifications and classification of continuous pattern scores into three categories using k-means clustering was also high (Cohen's kappa = 0.69). These scores indicate very good to excellent agreement between observers and between observers and k-means classification in categorical and continuous pattern judgments (Cicchetti 1994). Observers tended to place species with clear unbroken stripes or bands at either end of the scale, with dorsal patterns with broken stripes or bands, or patterns where both stripes and bands are present together with spots, being placed toward the central "spot" portion of the scale. Forty (9.1%) species were classified by stage 1 observers as plain and were not given to stage 2 observers to arrange along a scale (see Materials and Methods section). Stage 2 observers classified 125 species (28.5%) as having banded patterns, 229 species (52.2%) as having a spotted pattern, and 45 species (10.3%) as having a striped pattern.

Testing for the strength of phylogenetic signal in the categories of pattern traits using the D statistics showed that plain and striped patterning was highly conserved within lineages and, spots and bands were moderately phylogenetically conserved (plain:  $D = -0.035$ ,  $P(D = 0) = 0.55$ ,  $P(D = 1) = 0$ ; stripes:  $D = 0.208$ ,  $P(D = 0) = 0.27$ ,  $P(D = 1) = 0$ ; spots:  $D = 0.487$ ,  $P(D = 0) = 0$ ,  $P(D = 1) = 0$ ; bands:  $D = 0.403$ ,  $P(D = 0) = 0$ ,  $P(D = 1) = 0.02$ ). This confirms the necessity of using phylogenetically controlled analyses. The ancestral pattern at the root of the gecko phylogeny was estimated as striped ( $P = 0.16$ ), spotted ( $P = 0.31$ ), or banded ( $P = 0.51$ ), with plain pattern very unlikely ( $P = 0.02$ , Supporting Information 6).

### TRANSITION RATES BETWEEN BANDS, STRIPES, SPOTS, AND PLAIN PATTERNS

The multistate analysis of evolutionary transitions between plain, striped, spotted, and banded geckos showed that of the 12 parameters, four were estimated as zero (i.e., they do not occur) in over 50% of posterior samples. These were plain to spots, plain to bands, stripes to plain, and bands to plain. A second group of pattern transitions occurred at a relatively low rate (spots to stripes, spots to plain, and bands to stripes, mean posterior



**Figure 3.** Transition rates between the four pattern categories. Thick lines denote a high transition rate and thin lines a low transition rate. From left to right, are bands, spots, stripes, and plain pattern. Colors around each rectangle correspond to color coding used in Figures 4 and 5.

estimate = 0.363), while the other transitions were generally grouped as occurring at a high rate (mean posterior estimate = 2.27, see Supporting Information 7 for a full summary of the top 10 models). The transitions among patterns are summarized in Figure 3 and suggest that the pattern gradient we asked observers to classify images on has some evolutionary/developmental basis: transitions between pattern categories adjacent on the gradient are generally more frequent than transitions between separated pattern categories, except that stripes frequently become bands without transitioning through spots. Plain patterns frequently transition to stripes but stripes do not transition back to plain, rather spots revert to plain.

### GECKO ECO-BEHAVIORAL TRAIT EVOLUTION

In our sample, 309 (70.5%) gecko species are classified as nocturnal and 129 (29.5%) species as diurnal. *Multistate* analysis of transitions from nocturnality to diurnality occurred at the same low rate as transitions from diurnality to nocturnality (0.207, equal rates in 98.5% of posterior models). The ancestral gecko was estimated to be nocturnal ( $P = 1$ ).

One hundred sixty-nine (38.6%) species in our sample live mainly in “open” habitats (“sandy” or “arid rocky”) whereas 171 (39 %) species live mainly in closed habitats (“forested rock,” “trees” or “leaf litter”). Habitat information could not be confirmed for 70 (15.9%) species, and 29 (6.6%) species live in shrubland, which was not classified as either open or closed. Transitions from closed to open habitats have occurred at a negligible rate (posterior mean rate = 0.02, 88.5% of posterior models had a zero rate), whereas transitions from open to closed have occurred more frequently (posterior mean rate = 1.189, above zero in 99.9% of posterior samples). Geckos were inferred to have evolved from an ancestor that lived in open habitats ( $P = 0.98$ ).

Of the species with habitat data, 259 (70.2%) are “specialist” species that were scored as only inhabiting one habitat type and 110 (29.8%) are “generalist” species that inhabit more than one habitat type. Transitions from habitat specialism to generalism occurred at a lower rate (1.358, above zero in 99.9% of samples) than transitions from generalism to specialism (4.368, above zero

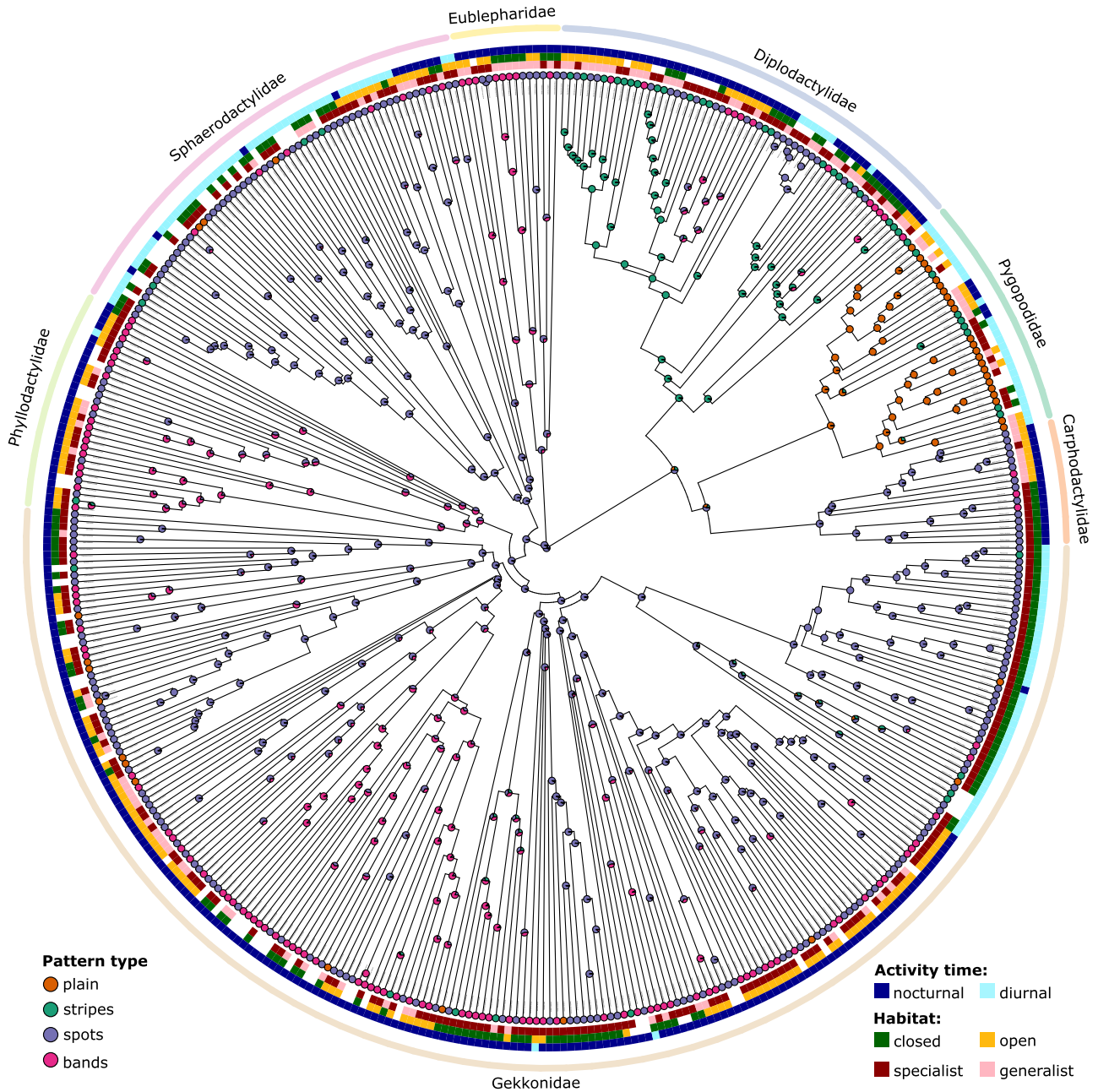
in 100% of samples). At the root of the tree, habitat generalism was the preferred state ( $P = 0.77$ ).

Testing for phylogenetic signal in the eco-behavioral traits showed that activity time is highly conserved ( $D = -1.04$ ,  $P(D = 0) = 1$ ,  $P(D = 1) = 0$ ), as is habitat openness ( $D = -0.663$ ,  $P(D = 0) = 1$ ,  $P(D = 1) = 0$ ) and habitat generalism ( $D = 0.184$ ,  $P(D = 0) = 0.178$ ,  $P(D = 1) = 0.0$ ), congruent with the low transition rates observed for these traits in the *multistate* analyses. The phylogenetic distribution of eco-behavioral traits and pattern categories is presented in Figure 4.

### CORRELATED EVOLUTION OF GECKO DORSAL PATTERNING AND ECO-BEHAVIORAL TRAIT

To investigate the evolution of the four main pattern categories, plain, stripes, spots, and bands, we calculated BFs to establish evidence for dependent models of trait evolution, where the transition rates of one trait are dependent on the state of the other trait, over independent models, where the transition rates of pattern and eco-behavioral traits are not related. Additionally, we tested our hypothesis that isotropic patterns (plain + spots) should be related to habitat generalism. Results (Table 1) showed strong support for the evolution of bands being associated with gecko activity time and indicate that the evolution of all pattern categories (plain, stripes, spots, and bands) is associated with whether the habitat is open or closed. There was no relationship between any of the pattern categories or pattern isotropy and habitat generalism, or between plain, stripe, or spot patterns and activity time. Repeat runs of models were all highly consistent and prior choice did not strongly influence posterior samples except for two uniform models that did not converge (Supporting Information 8–10). Unsupported dependent models were also nonsignificant in the phylogenetic logistic regression results (Table 1).

To investigate the nature of the dependent relationships indicated in Table 1, we examined the transition rate parameters of the models with highest posterior probability. These are illustrated in Figure 5 and described in the next two sections, along with the complementary phylogenetic logistic regression results. The 10 best supported models for each analysis are fully summarized in Supporting Information 11–15.



**Figure 4.** Phylogeny of the gecko species included in the present study with trait data, with gecko families indicated on the outer ring by distinct colors. Circular symbols at the tips illustrate the four pattern categories, with orange corresponding to plain, green to stripes, purple to spots, and pink to bands. The pie charts at the nodes display the posterior probability of each pattern category, calculated using the *make.simmap* function in the *phytools* R package (Revell 2012) using the three-rate model and root state prior probabilities estimated by the “multistate” pattern evolution analysis (Fig. 3), simulating character histories 1000 times. The middle rings surrounding the tips shows data for habitat generalism, habitat openness, and activity time scores.

**Activity time and bands**

The model with highest posterior probability (10.85% of samples) was a two-rate model where nocturnal lineages with any other pattern category gain bands, and nocturnal lineages with bands lose bands at a high rate (mean posterior rate = 2.62) while other transitions occur at a lower rate (0.45, Fig. 5A.). Other models with high

posterior support (Supporting Information 11) similarly found the high rate of gains and losses of bands when nocturnal but additionally set one or two parameters to zero in ways consistent with an association between bands and nocturnal activity, for example transitions to diurnal when banded (Supporting Information 11, model 2 6.53% of posterior sample), or losses of banding when



**Table 1.** Results showing support for dependent models of trait evolution compared to independent models in discrete analyses and a summary of phylogenetic logistic regression models. In the discrete analyses, BF's >10 indicate very strong evidence for the dependent model, 5–10 is strong evidence, >2 is positive evidence, and <2 is weak evidence. Dependent models with positive evidence and significant regression models after Benjamini–Hochberg correction are indicated in bold.

		Marginal likelihood		log Bayes	logistic regression		
		dependent	independent	Factor (BF)	$\beta$	Z	P
Activity time	Plain	–185.10	–180.15	–9.89	0.70	1.13	0.26
	Stripes	–220.15	–215.54	–9.21	0.83	1.50	0.13
	Spots	–365.44	–365.66	0.43	0.64	2.12	0.03
	Bands	<b>–318.77</b>	<b>–331.85</b>	<b>26.17</b>	<b>–2.03</b>	<b>–4.85</b>	<b>&lt;0.001</b>
Habitat generalism	Plain	–315.24	–312.70	–5.09	0.18	0.43	0.67
	Stripes	–350.15	–349.19	–1.92	0.24	0.47	0.63
	Spots	–460.68	–455.17	–11.02	–0.43	–1.86	0.06
	Bands	–461.09	–454.91	–12.35	0.47	1.90	0.06
Habitat openness	Isotropic	–494.80	–494.26	–1.08	–0.31	–1.37	0.17
	Plain	<b>–227.78</b>	<b>–234.25</b>	<b>12.94</b>	–0.58	–1.04	0.30
	Stripes	<b>–262.54</b>	<b>–271.30</b>	<b>17.52</b>	–0.91	–1.31	0.19
	Spots	<b>–415.74</b>	<b>–419.57</b>	<b>7.66</b>	–0.32	–1.22	0.22
	Bands	<b>–373.64</b>	<b>–379.78</b>	<b>12.27</b>	0.55	1.89	0.06

diurnal to a high transition rate (Supporting Information 11, model 5, 4.52% of posterior samples), suggesting an association between bands and nocturnality. This was supported by the phylogenetic logistic regression that found a significant relationship between bands and nocturnal activity ( $Z = -4.853$ ,  $P < 0.001$ ). Overall this supports our hypothesis that bands are associated with nocturnal activity patterns and shows that lineages both gain and lose bands when they are nocturnal at a much faster rate than when they are diurnal.

#### Habitat openness and all pattern categories

The evolution of plain and striped patterns is associated with whether a lineage utilizes open or closed habitats (Fig. 5B and C, Supporting Information 12 and 13). Transitions between open and closed habitats are frequent when plain (mean posterior rate = 6.61) or striped (6.12) compared to other pattern categories. This suggests that plain and striped patterns do not strongly constrain habitat type. Furthermore, in both open and closed habitats species change from striped or plain patterns to other pattern categories at a higher rate than other pattern categories change to plain or striped patterns, confirming the results of the multistate analysis of pattern categories (Fig. 3).

In contrast while spots are gained and lost at the same moderate rate (2.40, Fig. 5D) in both open and closed habitats, spotted lineages very infrequently switch between open and closed habitats or vice versa (0.05, Supporting Information 14). This suggests that spots can be an effective phenotype in both open and closed habitats, but that they prevent switches between open and closed habitat.

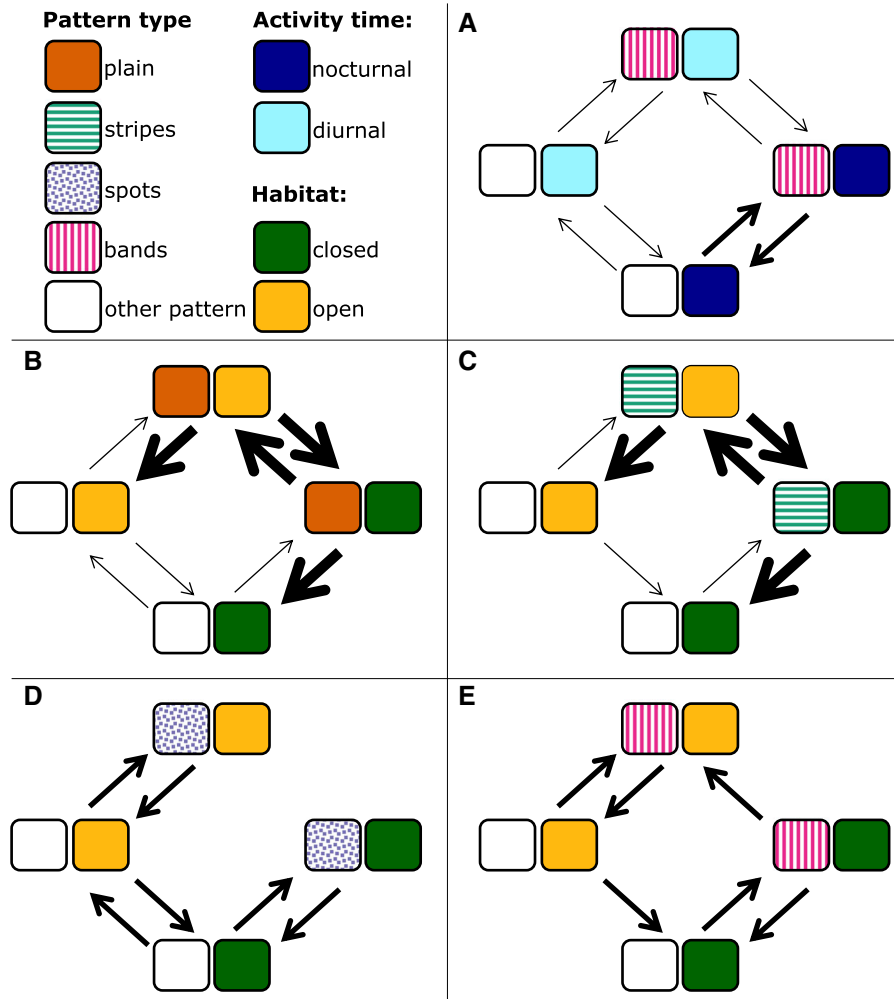
These results suggesting that the key difference between patterns is in their flexibility, is consistent with the phylogenetic logistic regression analysis, which showed no support for a simple association between habitat openness and plain ( $Z = -1.040$ ,  $P = 0.299$ ), striped ( $Z = -1.309$ ,  $P = 0.191$ ) or spotted ( $Z = -1.219$ ,  $P = 0.223$ ) patterns.

Geckos with bands transition from closed to open habitats at a higher rate (1.61, Supporting Information 15) than non-banded geckos (99% of posterior samples set this rate to zero). The rate banded geckos transition from open to closed habitats is also set to zero in 98% of samples. While bands evolve in closed habitats at a similar rate (1.50), overall this supports an association between banding and utilization of open habitats (Fig. 5E). This weak association was supported by the phylogenetic logistic regression, with a trend toward bands being associated with open habitats ( $Z = -1.887$ ,  $P = 0.059$ ).

## Discussion

Our results reveal at a macroevolutionary scale the major species-level ecological and behavioral drivers of gecko dorsal pattern variation. Broadly, we see that dorsal patterning is associated with activity time and habitat type. Overall, observed relationships are consistent with our assumption that gecko dorsal patterning functions as camouflage and provide insight into the direction and pace of dorsal pattern evolution, enabling evaluation of outstanding hypotheses in camouflage theory.

We inferred the ancestral gecko to be nocturnal, living in open habitats, but not specialized to one habitat type, and



**Figure 5.** Estimated transition rates for the best supported dependent model of trait evolution for (A) activity time and bands, (B) plain pattern and habitat openness, (C) stripes and habitat openness, (D) spots and habitat openness, and (E) bands and habitat openness. In the figure legend “other pattern” refers to all the other patterns excluding the one examined in each inset. The absence of an arrow indicates that the rate is zero, thin arrows indicate rates below 0.5, medium thickness arrows indicate rates between 0.5 and 3, and thick arrows indicate rates between 3 and 7.

probably either spotted or banded. Our results confirm that the gecko radiation has transitioned to diurnality at least six times, produced hundreds of diurnal species, and subsequently reverted to a nocturnal lifestyle multiple times, making the group ideal for understanding how phenotypes adapt to this major change in lifestyle, especially in terms of visual changes (Roth et al. 2009; Gamble et al. 2015; Pinto et al. 2019). In support of our prediction that bands should evolve as a camouflage defense against visual predators when the prey is likely to be seen motionless, we found that bands were associated with nocturnal activity in both the *discrete* and logistic regression analyses. Nocturnal geckos rest in concealed locations during the daytime (Aguilar and Cruz 2010). Banded patterns are likely to provide effective disruptive camouflage for nocturnal geckos that will be motionless when visually oriented predators are most active because bands intersect edges,

breaking up the conspicuous outline (Cuthill et al. 2005; Hall et al. 2013).

In contrast, we did not observe direct support for the prediction that longitudinal stripes should be associated with diurnal activity. This relationship was found in a similar comparative analysis of non-gecko lizard dorsal patterning (Murali et al. 2018), though not in a study of snake patterning (Allen et al. 2013). The hypothesis that stripes should be associated with diurnal prey is based on the idea that they might work via a dazzle camouflage mechanism rather than background matching camouflage. Unlike cryptic strategies that “break” as soon as prey move (Ioannou and Krause 2009), dazzle camouflage works while prey are in motion, with theory suggesting that some dorsal patterns such as stripes could make it harder for predators to accurately estimate the speed of trajectory of prey (Scott-Samuel et al. 2011). Although we did

not directly test the relationship between stripes and gecko mobility, the lack of association between stripes and diurnality is inconsistent with this idea, as diurnal geckos are more likely to be seen while moving by visually oriented predators. Current experimental support for the theory of dazzle camouflage in animals is mixed and largely limited to human predators (Ruxton et al. 2018). In non-gecko lizards stripes tend to co-evolve with colorful tails after a lineage has evolved caudal autotomy (Murali et al. 2018), with the suggestion that dazzling body stripes support redirection of predator attacks toward detachable tails, a comparative association that is also supported by experimental evidence (Murali and Kodandaramaiah 2018). In geckos, caudal autotomy is common but only a few species have conspicuously colorful tails (e.g., *Sphaerodactylus townsendi*, Fig. 1G), and problematically for the “dazzle and deflect” theory, none of these have striped bodies. Furthermore, these colorful tails may be differently colored between the two sexes and may be under sexual selection more than functioning in predator escape. However, given the rapid prey speeds at which dazzle effects have been observed in the lab, it is possible that geckos simply move too slowly for dazzle camouflage to be effective against their predators. Experimental results are also mixed on whether stripes would be more effective dazzle patterns than bands (Hughes et al. 2014; Hogan et al. 2016). Thus it may be that stripes simply represent an effective background matching or disruptive camouflage pattern in circumstances unrelated to activity time. For example, some striped species may be associated with visually linear microhabitats such as grass (e.g., some *Strophurus* and *Cryptactites*) or narrow branches (e.g., *Uroplatus lineatus*) where stripes may be more cryptic than blotches or bands. Further, it remains possible that striped patterns are associated with non-camouflage functions. For example, within *Podarcis hispanicus*, a species of lacertid lizard with polymorphic coloration, striped individuals are darker than banded morphs and give birth to lighter offspring, with the suggestion that stripes support the camouflage of an alternative ecotype that has a greater demand placed on pigmentation for thermoregulation (Ortega et al. 2015). This may also be the case at the species-level in geckos, although striped geckos do not obviously appear to be any lighter or darker on average than non-striped geckos.

Another important result of the analysis of how patterning relates to activity time was that bands were both gained and lost at a higher rate in nocturnal lineages than diurnal lineages. The same was not true for other pattern categories. Species active at night are likely to be less exposed to visually oriented predators, so there may be relaxed selection on poorly camouflaged intermediate forms as populations shift to or from a banded phenotype that provides good camouflage to another well camouflaged pattern category. Why this might apply only to bands is unclear. Other studies of reptile dorsal coloration have found that banded patterns are often found on “sit-and-wait” ambush predators (Allen

et al. 2013). Ambush hunters aim to remain hidden from prey while motionless, using microhabitats where they are especially cryptic. The majority of gecko species are considered primarily ambush hunters as opposed to active hunters, although species-level data were not available for us to include this variable in our analysis. It may be that banded nocturnal ambush hunting lineages are under selection to change to or from other pattern categories frequently as a consequence of being able to change (over evolutionary time) preferred ambush sites with different appearances, to an extent that is not possible for diurnal lineages.

In the analysis of how patterning relates to habitat openness, we observed simple correlated evolution between banded patterning and utilization of open habitats, whereas stripes, spots, and plain patterns do not have any directional evolution with habitat openness. This general result was partly confirmed in the logistic regression analysis, with a trend toward bands being associated with open habitats, while other patterns showed no linear relationships. There was no support for our prediction that open habitats and plain patterns should be associated. While we did not make a prediction about how bands relate to habitat openness, bands may be adaptive background matching camouflage in open rocky environments where substrates are made up of surfaces at many different depths that produce high-contrast shadows. As well as background matching against areas of light and shade, banded geckos with “edge-enhanced” appearances, where light patches are bordered by a lighter outline and dark patches by a darker outline, as in *Cyrtodactylus cf. intermedius* (Fig. 1D), increase the local internal edge contrast. By creating pictorial relief, this phenotype may improve disruptive camouflage in environments that contain surfaces at many different depths (Egan et al. 2016).

Examining transition rates in the analyses of how spotted, striped, and plain pattern categories associate with habitat openness found that lineages transitioned between open and closed habitats relatively frequently when they were plain or striped, but infrequently when they were spotted. This suggests that spots generally represent a more specialized camouflage, ill-suited to facilitating evolutionary transitions between habitats, whereas plain and striped patterns are a more flexible camouflage solution across habitat types. While this conclusion was not supported by any relationships between habitat generalism (the number of habitat categories occupied by a species) and pattern category, overall our results suggest that an important difference between major dorsal pattern categories are in terms of their flexibility; both stripes and plain patterns seem to facilitate transitions between open and closed habitats, while spots hinder them. Considerable work has aimed to understand the circumstances under which compromise camouflage that affords some protection against multiple backgrounds, or specialized camouflage against one background, might evolve, depending on the nature of the

trade-off between the probability of detection against different backgrounds (Ruxton et al. 2018). To our knowledge, this is the first evidence that broad dorsal pattern categories may be intrinsically better compromise camouflage. The mechanism underlying pattern flexibility would be interesting to explore. One possibility is that flexible pattern categories reflect image statistics across the range of backgrounds (Chiao et al. 2009; Fennell et al. 2019), for example, stripes, but not other pattern categories may be a common feature in both open and closed habitats. Another is that in different circumstances pattern categories reflect utilization of alternative camouflage mechanisms that are (partially) independent from background matching, and so provide flexibility across backgrounds, for example, that banded geckos utilize disruptive camouflage, and striped geckos dazzle camouflage. The lack of any association between patterning and habitat generalism, and isotropic patterns with generalism specifically, may be because our level of analysis and the way we scored generalism was insufficient for capturing how variable the appearance of backgrounds used by a species is. Alternatively geckos may be able to use positional behavior to make anisotropic patterns work as effective background matching camouflage against a range of backgrounds (Webster et al. 2008).

A consequence of analyzing such a large species sample was that we were unable to quantify and analyze within-species variation in camouflage. Some of the 1744 species of gecko show considerable variation between populations, age classes, and individuals of the same species (Regalado 2012; Kiskowski et al. 2019). However, it appears that color is more variable than patterning. Additionally, most pattern variation appears to be within pattern-category (e.g., spots of different sizes, density or arrangements), so incorporating intraspecific variation would be unlikely to significantly alter our findings. Some gecko species can change color, with animals darkening over a period of minutes as they become cooler, enter lighter habitats, or become threatened (Vroonen et al. 2012; Ito et al. 2013). Although geckos may change their body color darkening it or lightening it, the pattern does not change, it only becomes more or less visible because of the contrast with the rest of the body color. Therefore, the actual pattern is not influenced by the potential color change. Finally, our study does not include data on UV reflectance of the color pattern. UV reflectance data cannot be collected from the images used in this study. Furthermore, as this study focuses on color pattern used for camouflage and virtually all natural backgrounds are strongly UV-absorbing (foliage, earth, rocks, water, bark), we do not think ignoring potential UV reflectance is an issue for our analysis of camouflage patterning. Dorsal pattern polymorphism, sexual dichromatism, and rapid color change have been widely investigated in lizards (Paemelaere et al. 2011; Medina et al. 2016) but very little in geckos (Johnston and Bouskila 2007), so these topics could be a key subject for further investigation.

The multistate analysis of evolutionary transitions between the pattern categories may reveal features of the developmental basis of pattern formation in geckos. Results show that all transitions between stripes, spots, and bands are possible. Transitions from stripes to spots and bands, and between spots and bands are common, while transition to stripes from bands and spots are less frequent. In contrast plain geckos transition first to stripes, and only fade to plain again from a spotted phenotype. This result mirrors the results of mathematical models of pattern formation and *evo-devo* results that demonstrate how, once a pigment pattern generating mechanism is operational, minor alterations to the developmental process are required to produce marked phenotypic differences (Murray and Myerscough 1991; Chang et al. 2009; Allen et al. 2013; Dhillon et al. 2017; Kiskowski et al. 2019).

In conclusion, comparing the results observed here with those from comparative analyses of camouflage patterning in other taxa suggest that there are few, if any, general rules spanning different groups about the relationship between camouflage pattern category and ecology and behavior. We did not find support for relationships that have been identified in other Squamate taxa, for example between stripes and diurnal activity (Murali et al. 2018). We predicted plain patterning would evolve in open habitats, partly on the basis of relationships observed in other taxa (Allen et al. 2011), but instead found evidence that banded patterning was associated with open habitats. This suggests that effective camouflage is often relatively specific to natural image statistics at the spatial scale predator-prey interactions in a given taxa take place at (Fennell et al. 2019). The potential for camouflage to be highly specific to an individual, population, or species' visual ecology, including the visual behavior of predators, is clearly reflected in the intricate camouflage of some gecko species, for example in *Ptychozoon kuhli* (Fig. 1E) the effect of bands on disrupting the outline is further enhanced through epidermal fringes and webbing. Perhaps the most interesting result of our study is in the role of pattern flexibility in camouflage pattern evolution. Plain and striped patterns were found to be more flexible than spotted patterns, facilitating transitions between open and closed habitats. This finding could have important implications for how camouflage patterning influences lineage evolution and diversification, so the result warrants further experimental work and comparative investigation in other groups.

#### AUTHOR CONTRIBUTIONS

Y.C. conceived the study. Y.C. and W.A. designed the study. N.M., T.G., and Y.C. collected the data. W.A. and N.M. ran the analyses. W.A. and Y.C. wrote the paper. Y.C. secured funding. All the authors read and approved the final manuscript.

#### ACKNOWLEDGMENTS

We are thankful to the undergraduate students of the Vertebrate Form and Function class (Fall semester 2015) at the University of South Alabama



who participated as stage one observer for this study and to Jennifer Axsmith, Katie Dankovic, Stephanie Jett, Tully Garner, Scott Glaberman, Amber Simpson, and Adam Stern for building the image gradient used in this study. We are thankful to Isabella Capellini for discussion on this topic during the early stages of this project and Kevin Arbuckle for feedback during manuscript preparation. We are also grateful to the three anonymous reviewers, the Associate Editor, Dr. Martins, and the Handling Editor, Dr. Servedio, for their helpful comments and suggestions on an earlier version of this manuscript. T.G. is supported by NSF-DEB1657662. This work was supported by the Gulf Coast Advance Fellowship (<http://www.gulfcoastadvance.org/home-2-1/>) and University of South Alabama Research and Development Fund (<http://www.southalabama.edu/departments/research/rdl/funding-opportunities/internal-funding-opportunities.html>) to Y.C.

## LITERATURE CITED

- Aguilar, R., and F. B. Cruz. 2010. Refuge use in a Patagonian nocturnal lizard, *Homonota darwini*: the role of temperature. *J. Herpetol.* 44:236–242.
- Allen, W. L., R. Baddeley, N. E. Scott-Samuel, and I. C. Cuthill. 2013. The evolution and function of pattern diversity in snakes. *Behav. Ecol.* 24:1237–1250.
- Allen, W. L., I. C. Cuthill, N. E. Scott-Samuel, and R. Baddeley. 2011. Why the leopard got its spots: relating pattern development to ecology in felids. *Proc. R. Soc. B* 278:1373–1380.
- Alonso, M. L. B., J. M. Cotrina, D. A. Pardo, E. Font, and M. Molina-Borja. 2010. Sex differences in antipredator tail-waving displays of the diurnal yellow-headed gecko *Gonatodes albugularis* from tropical forests of Colombia. *J. Ethol.* 28:305–311.
- Benjamini, Y., and Y. Hochberg. 1995. Controlling the false discovery rate: a practical and powerful approach to multiple testing. *J. R. Stat. Soc. Ser. B* 57:289–300.
- Blouin-Demers, G., O. Lourdaux, A. Bouazza, C. Verreault, H. El Mouden, and T. Slimani. 2013. Patterns of throat colour variation in *Quedenfeldtia trachyblepharus*, a high-altitude gecko endemic to the High Atlas Mountains of Morocco. *Amphibia-Reptilia* 34:567–572.
- Bond, A. B., and A. C. Kamil. 2006. Spatial heterogeneity, predator cognition, and the evolution of color polymorphism in virtual prey. *Proc. Natl. Acad. Sci. USA* 103:3214.
- Booth, C. L. 2008. Evolutionary significance of ontogenetic colour change in animals. *Biol. J. Linn. Soc.* 40:125–163.
- Caro, T., and W. L. Allen. 2017. Interspecific visual signalling in animals and plants: a functional classification. *Phil. Trans. R. Soc. B* 372:20160344.
- Chang, C., P. Wu, R. E. Baker, P. K. Maini, L. Alibardi, and C.-M. Chuong. 2009. Reptile scale paradigm: evo-devo, pattern formation and regeneration. *Int. J. Dev. Biol.* 53:813–826.
- Chiao, C.-C., C. Chubb, K. C. Buresch, L. Siemann, and R. T. Hanlon. 2009. The scaling effects of substrate texture on camouflage patterning in cuttlefish. *Vis. Res.* 49:1647–1656.
- Cicchetti, D. V. 1994. Guidelines, criteria, and rules of thumb for evaluating normed and standardized assessment instruments in psychology. *Psychol. Assess.* 6:284.
- Cohen, J. 1960. A coefficient of agreement for nominal scales. *Educ. Psychol. Meas.* 20:37–46.
- Cuthill, I. C., W. L. Allen, K. Arbuckle, B. Caspers, G. Chaplin, M. E. Hauber, G. E. Hill, N. G. Jablonski, C. D. Jiggins, A. Kelber, et al. 2017. The biology of color. *Science* 357:eaan0221.
- Cuthill, I. C., M. Stevens, J. Sheppard, T. Maddocks, C. A. Párraga, and T. S. Troscianko. 2005. Disruptive coloration and background pattern matching. *Nature* 434:72–74.
- Dhillon, D. S. J., M. C. Milinkovitch, and M. Zwicker. 2017. Bifurcation analysis of reaction diffusion systems on arbitrary surfaces. *Bull. Math. Biol.* 79:788–827.
- Egan, J., R. J. Sharman, K. C. Scott-Brown, and P. G. Lovell. 2016. Edge enhancement improves disruptive camouflage by emphasising false edges and creating pictorial relief. *Sci. Rep.* 6:38274.
- Endler, J. A., and J. Mappes. 2017. The current and future state of animal coloration research. *Philos. Trans. R. Soc. B Biol. Sci.* 372:20160352.
- Fennell, J., L. Talas, R. Baddeley, I. Cuthill, and N. Scott-Samuel. 2019. Optimising colour for camouflage and visibility: the effects of the environment and the observer's visual system. *J. R. Soc. Interface* 16:20190183. <https://doi.org/10.1098/rsif.2019.0183>
- Fleiss, J. L. 1971. Measuring nominal scale agreement among many raters. *Psychol. Bull.* 76:378.
- Fritz, S. A., and A. Purvis. 2010. Selectivity in mammalian extinction risk and threat types: a new measure of phylogenetic signal strength in binary traits. *Cons. Biol.* 24:1042–1051.
- Fulgione, D., M. Buglione, D. Rippa, M. Trapanese, S. Petrelli, D. M. Monti, M. Aria, R. Del Giudice, and V. Maselli. 2019. Selection for background matching drives sympatric speciation in Wall Gecko. *Sci. Rep.* 9:1288.
- Gamble, T., E. Greenbaum, T. R. Jackman, and A. M. Bauer. 2015. Into the light: diurnality has evolved multiple times in geckos. *Biol. J. Linn. Soc.* 115:896–910.
- Gübitz, T., R. S. Thorpe, and A. Malhotra. 2000. Phylogeography and natural selection in the Tenerife gecko *Tarentola delalandii*: testing historical and adaptive hypotheses. *Mol. Ecol.* 9:1213–1221.
- Hall, J. R., I. C. Cuthill, R. Baddeley, A. J. Shohet, and N. E. Scott-Samuel. 2013. Camouflage, detection and identification of moving targets. *Proc. R. Soc. B Biol. Sci.* 280:20130064.
- Halperin, T., L. Carmel, and D. Hawlena. 2017. Movement correlates of lizards' dorsal pigmentation patterns. *Funct. Ecol.* 31:370–376.
- Harmon, L., and R. Gibson. 2006. Multivariate phenotypic evolution among island and mainland populations of the ornate day gecko, *Phelsuma ornata*. *Evolution* 60:2622–2632.
- Hogan, B. G., N. E. Scott-Samuel, and I. C. Cuthill. 2016. Contrast, contours and the confusion effect in dazzle camouflage. *R. Soc. Open Sci.* 3:160180.
- Hughes, A. E., J. Troscianko, and M. Stevens. 2014. Motion dazzle and the effects of target patterning on capture success. *BMC Evol. Biol.* 14:201.
- Ioannou, C., and J. Krause. 2009. Interactions between background matching and motion during visual detection can explain why cryptic animals keep still. *Biol. Lett.* 5:191–193.
- Ito, R., I. Ikeuchi, and A. Mori. 2013. A day gecko darkens its body color in response to avian alarm calls. *Curr. Herpetol.* 32:26–33.
- Ives, A. R., and T. Garland Jr. 2009. Phylogenetic logistic regression for binary dependent variables. *Syst. Biol.* 59:9–26.
- Johnston, G., and A. Bouskila. 2007. Sexual dimorphism and ecology of the gecko, *Ptyodactylus guttatus*. *J. Herpetol.* 41:506–513.
- Kang, C., Y. E. Kim, and Y. Jang. 2016. Colour and pattern change against visually heterogeneous backgrounds in the tree frog *Hyla japonica*. *Sci. Rep.* 6:22601.
- Kelley, J. L., J. L. Fitzpatrick, and S. Merilaita. 2013. Spots and stripes: ecology and colour pattern evolution in butterfly fishes. *Proc. R. Soc. B* 280:20122730–20122730.
- Kiskowski, M., T. Glimm, N. Moreno, T. Gamble, and Y. Chiari. 2019. Isolating and quantifying the role of developmental noise in generating phenotypic variation. *PLoS Comput. Biol.* 15:e1006943.
- Maddison, W. P., and R. G. FitzJohn. 2014. The unsolved challenge to phylogenetic correlation tests for categorical characters. *Syst. Biol.* 64:127–136.

- Marcellini, D. 1977. Acoustic and Visual Display Behavior of Gekkonid Lizards. *Am. Zool.* 17:251–260.
- Marshall, K. L. A., K. E. Philpot, and M. Stevens. 2016. Microhabitat choice in island lizards enhances camouflage against avian predators. *Sci. Rep.* 6:19815.
- Meade, A., and M. Pagel. 2016. BayesTraits v.3.0.1. Available at <http://www.evolution.rdg.ac.uk/BayesTraitsV3.0.1/BayesTraitsV3.0.1.html>.
- Medina, I., J. B. Losos, and D. L. Mahler. 2016. Evolution of dorsal pattern variation in Greater Antillean Anolis lizards. *Biol. J. Linn. Soc.* 120:427–435.
- Michalis, C., N. E. Scott-Samuel, D. P. Gibson, and I. C. Cuthill. 2017. Optimal background matching camouflage. *Proc. R. Soc. B* 284:20170709.
- Murali, G., and U. Kodandaramaiah. 2018. Body size and evolution of motion dazzle coloration in lizards. *Behav. Ecol.* 29:79–86.
- Murali, G., and U. Kodandaramaiah. 2016. Deceived by stripes: conspicuous patterning on vital anterior body parts can redirect predatory strikes to expendable posterior organs. *R. Soc. open Sci.* 3:160057.
- Murali, G., S. Merilaita, and U. Kodandaramaiah. 2018. Grab my tail: evolution of dazzle stripes and colourful tails in lizards. *J. Evol. Biol.* 31:1675–1688.
- Murray, J. D., and M. R. Myerscough. 1991. Pigmentation pattern formation on snakes. *J. Theor. Biol.* 149:339–360.
- Nielsen, S. V., P. M. Oliver, R. J. Laver, A. M. Bauer, and B. P. Noonan. 2016. Stripes, jewels and spines: further investigations into the evolution of defensive strategies in a chemically defended gecko radiation (*Strophurus*, Diplodactylidae). *Zool. Scripta* 45:481–493.
- Orme, D., R. P. Freckleton, G. H. Thomas, T. Petzoldt, S. A. Fritz, N. Issac, and W. Pearse. 2018. The caper package: comparative analysis of phylogenetics and evolution in R package version 1.0.1, 1–36. Available at <https://CRAN.R-project.org/package=caper>.
- Ortega, J., D. Pellitteri-Rosa, P. López, and J. Martín. 2015. Dorsal pattern polymorphism in female Iberian wall lizards: differences in morphology, dorsal coloration, immune response, and reproductive investment. *Biol. J. Linn. Soc.* 116:352–363.
- Ortolani, A. 1999. Spots, stripes, tail tips and dark eyes: Predicting the function of carnivore colour patterns using the comparative method. *Biol. J. Linn. Soc.* 67:433–476.
- Paemelaere, E., C. Guyer, and F. S. Dobson. 2011. A phylogenetic framework for the evolution of female polymorphism in anoles. *Biol. J. Linn. Soc.* 104:303–317.
- Pagel, M. 1994. Detecting correlated evolution on phylogenies: a general method for the comparative analysis of discrete characters. *Proc. R. Soc. B* 255:37–45.
- Pagel, M., and A. Meade. 2006. Bayesian analysis of correlated evolution of discrete characters by reversible-jump Markov chain Monte Carlo. *Am. Nat.* 167:808–825.
- Pinto, B. J., S. V. Nielsen, and T. Gamble. 2019. Transcriptomic data confirms an ancient nocturnal bottleneck in gecko lizards. *Molecular Phylogenetics and Evolution.* 141:106639.
- Poulin, B., G. Lefebvre, R. Ibáñez, C. Jaramillo, C. Hernández, and A. S. Rand. 2001. Avian predation upon lizards and frogs in a neotropical forest understorey. *J. Trop. Ecol.* 17:21–40.
- Protas, M. E., and N. H. Patel. 2008. Evolution of coloration patterns. *Annu. Rev. Cell Dev. Biol.* 24:425–446.
- Pyron, R., F. T. Burbrink, and J. J. Wiens. 2013. A phylogeny and revised classification of Squamata, including 4161 species of lizards and snakes. *BMC Evol. Biol.* 13:93.
- R Core Team. 2018. R: a language and environment for statistical computing. R Foundation for Statistical Computing, Vienna, Austria.
- Regalado, R. 2012. Social behavior of dwarf geckos (*Sphaerodactylus*): a comparative repertoire. *Ethol. Ecol. Evol.* 24:344–366.
- Revell, L. J. 2012. phytools: an R package for phylogenetic comparative biology (and other things). *Methods Ecol. Evol.* 3:217–223.
- Roth, L. S. V., L. Lundström, A. Kelber, R. H. H. Kröger, and P. Unsbo. 2009. The pupils and optical systems of gecko eyes. *J. Vis.* 9:27.
- Ruxton, G. D., W. L. Allen, T. N. Sherratt, and M. P. Speed. 2018. Avoiding attack: the evolutionary ecology of crypsis, mimicry and warning signals. 2nd ed. Oxford Univ. Press, Oxford, U.K.
- Saenko, S. V., J. Teyssier, D. van der Marel, and M. C. Milinkovitch. 2013. Precise colocalization of interacting structural and pigmentary elements generates extensive color pattern variation in *Phelsuma* lizards. *BMC Biol.* 11:105.
- Scott-Samuel, N. E., R. Baddeley, C. E. Palmer, and I. C. Cuthill. 2011. Dazzle camouflage affects speed perception. *PLoS One* 6:e20233.
- Stoddard, M. C., and R. O. Prum. 2008. Evolution of avian plumage color in a tetrahedral color space: a phylogenetic analysis of new world buntings. *Am. Nat.* 171:755–776.
- Tung Ho, L. S. V., and C. Ané. 2014. A linear-time algorithm for Gaussian and non-Gaussian trait evolution models. *Syst. Biol.* 63:397–408.
- Vroonen, J., B. Vervust, D. Fulgione, V. Maselli, and R. Van Damme. 2012. Physiological colour change in the Moorish gecko, *Tarentola mauritanica* (Squamata: Gekkonidae): effects of background, light, and temperature. *Biol. J. Linn. Soc.* 107:182–191.
- Webster, R. J., A. Callahan, J.-G. J. Godin, and T. N. Sherratt. 2008. Behaviourally mediated crypsis in two nocturnal moths with contrasting appearance. *Philos. Trans. R. Soc. B Biol. Sci.* 364:503–510.
- Wollenberg, K. C., and J. G. Measey. 2009. Why colour in subterranean vertebrates? Exploring the evolution of colour patterns in caecilian amphibians. *J. Evol. Biol.* 22:1046–1056.

Associate Editor: E. Martins  
 Handling Editor: M. R. Servedio

## Supporting Information

Additional supporting information may be found online in the Supporting Information section at the end of the article.

**Supporting Information 1.** Additional explanation on card sorting task.

**Supporting Information 2.** Links where the images used in this study were downloaded. Links highlighted in bold indicate that the original image used in this study cannot be found anymore. All images can be requested to the authors.

**Supporting Information 3.** Example of two printed cards used in this study.

**Supporting Information 4.** Dataset. Species: binomial name; pattern\_cat: majority rule pattern classification by observers; pattern\_score: mean continuous pattern score; habitat\_categories (sand, arid\_rock, shrub, forest\_rock, tree, leaf\_litter) : whether the habitat category is commonly utilised by the species; n\_habitats: sum(habitat\_categories); open\_habitat: (0) if species present in more closed habitat types (leaf litter, forested rock, arboreal trees) than open habitat types (sand, arid rock); habitat\_generalist: occupies a single habitat category (0) or multiple habitat categories (1); diurnal\_activity: primarily nocturnal (0) or diurnal (1).

**Supporting Information 5.** MCMC Analysis Procedure.

**Supporting Information 6.** Summary of pattern probability at root of gecko phylogeny from multiple multistate transition rate models between the four pattern categories, using different priors on parameters.

**Supporting Information 7.** Summary of the 10 top models of transitions between the four pattern categories (plain = p; stripes = st; spots = sp, bands = b) as determined by the posterior probability (.PP).

**Supporting Information 8.** Summary of multiple runs of dependent and independent models testing correlated evolution of each pattern trait and activity time.

**Supporting Information 9.** Summary of multiple runs of dependent and independent models testing correlated evolution of each pattern trait and habitat generalism.

**Supporting Information 10.** Summary of multiple runs of dependent and independent models testing correlated evolution of each pattern trait and habitat openness.

**Supporting Information 11.** Summary of the 10 most frequently sampled posterior models of the dependent relationship between bands (bands = b, not bands = xb) and activity time (diurnal = d, nocturnal = n).

**Supporting Information 12.** Summary of the 10 most frequently sampled posterior models of the dependent relationship between plain (plain = p, not plain = xp) and habitat openness (open = o, closed = c).

**Supporting Information 13.** Summary of the 10 most frequently sampled posterior models of the dependent relationship between stripes (stripes = st, not stripes = xst) and habitat openness (open = o, closed = c).

**Supporting Information 14.** Summary of the 10 most frequently sampled posterior models of the dependent relationship between spots (spots = sp, not spots = xsp) and habitat openness (open = o, closed = c).

**Supporting Information 15:** Summary of the 10 most frequently sampled posterior models of the dependent relationship between bands (bands = b, not bands = xb) and habitat openness (open = o, closed = c).