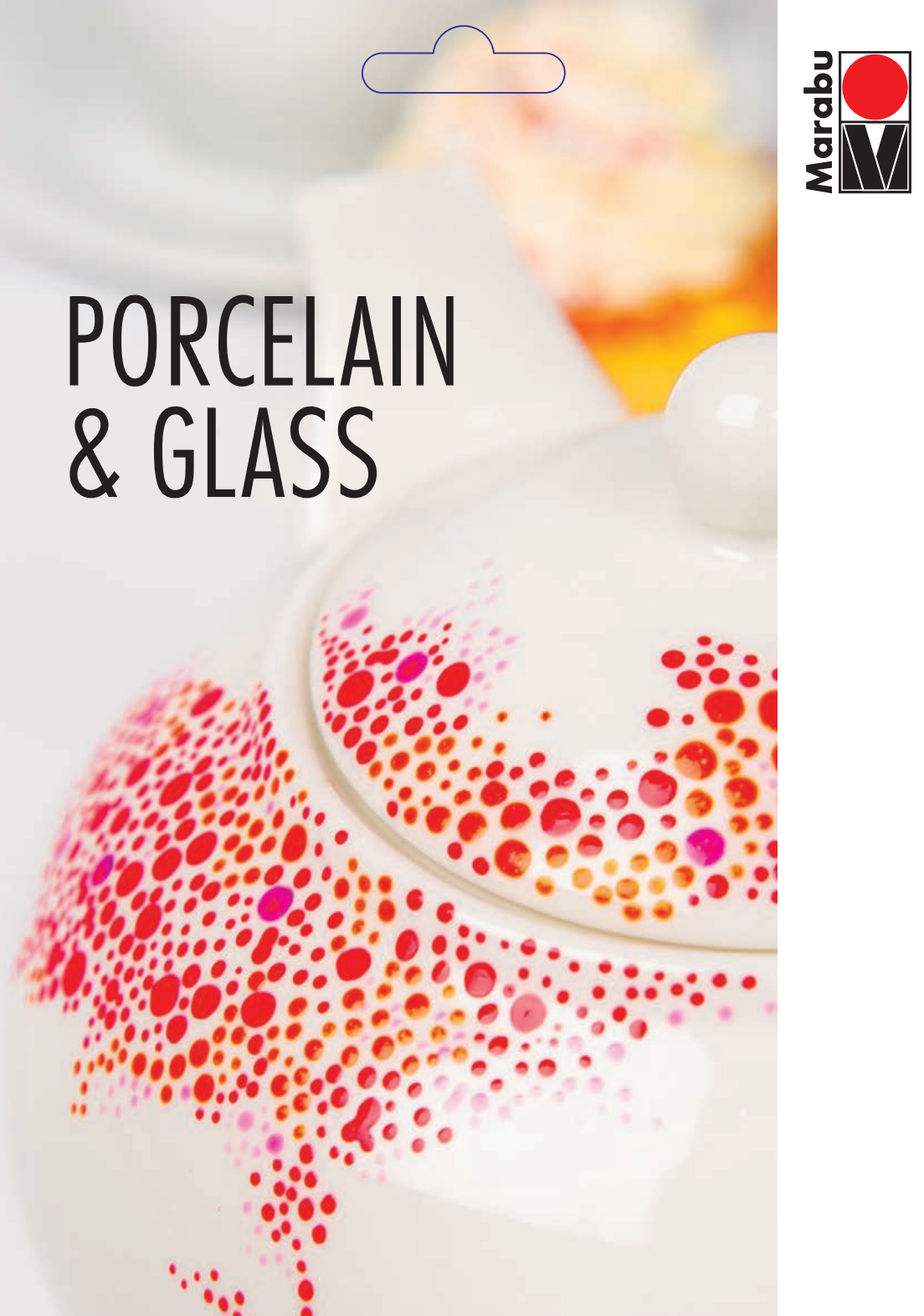




PORCELAIN & GLASS





ADD A COLOURFUL TOUCH TO PORCELAIN



DRYING AND HEAT SETTING

Dry to the touch after 30 minutes and dishwasher-safe after 3 days. You can shorten the drying time by leaving the object to air dry for one hour then drying it in an oven heated to 100 °C for 30 minutes. When used together with the Porcelain & Glas Painter, both paints can be fired once dried (160 °C/30 min). Painted tableware should be washed at max. 50 °C on a glasses/cups cycle.



PORCELAIN

DESIGN YOUR OWN TABLEWARE

Add impressive decorative touches to porcelain. Transform plain white cups, jugs and plates into a one-of-a-kind dining collection featuring your own designs, and impress friends and family with original artwork whenever they come over for tea and cake.

- Our wide selection of 18 basic and trend colours is enhanced with 8 metallic and glitter paints to create unique effects.
- Versatile use: paint, stamp, stencil.
- Water-based, odourless and lightfast.
- Dishwasher-safe without firing.
- Stir paint well as colour pigments settle in the jar – do not shake! Do not use water to thin paint.
- For porcelain, glass, metal, mirrors, ceramic, terracotta, stone and many different plastics, such as acrylic plastic and ABS.



220	sunshine yellow	
013	orange	
125	cherry	
133	rose pink	
131	raspberry	
251	violet	
223	blackberry	
090	light blue	
057	gentian	
293	night blue	
092	petrol	
153	mint	
061	reseda	
158	apple	
295	cocoa	
271	ivory	
070	white	
073	black	
782	metallic-silver	
784	metallic-gold	
582	glitter-silver	
584	glitter-gold	
570	glitter-white	
532	glitter-red	
533	glitter-pink	
555	glitter-blue	



PORCELAIN & GLAS PAINTER

HIGH-GLOSS PORCELAIN AND GLASS PAINT MARKER

Turn glass and porcelain objects into personalised decorations by adding your own individual touch. A range of different tip sizes allows pinpoint design accuracy. Use your imagination to bring ideas to life and create a unique setting in your living room or dining area.

- Pump system with highly pigmented ink.
 - Colour range comprises 17 basic and trend colours, 9 metallic and 7 glitter paints that can be used in combination with Marabu Porcelain and Glas.
 - More transparent on glass than on porcelain. Choose the right tip and apply a thicker/thinner layer to achieve the desired coverage.
 - Dishwasher-safe after firing.
 - Suitable for porcelain, glass, metal, mirrors, ceramic, terracotta and stone.
- Create unique works of art by combining all four tips:
- Metal-enclosed MULTI-PURPOSE plastic tip 0.8 mm: for clean outlines and lettering.
 - MULTI-PURPOSE tip 1-2 mm: can be used for a range of painting and writing activities.
 - MULTI-PURPOSE tip 2-4 mm: brush-like feel. For filling in large surfaces.
 - CALLIGRAPHY tip 1-2.5 mm: ornately write names, messages and signatures.



DRYING AND HEAT SETTING

Leave to dry for 4 hours, then fire in the oven for 30 minutes at 160 °C (do not preheat). Leave to cool down in the oven. Painted tableware should be washed at max. 50 °C on a glasses/cups cycle.



FOR LITTLE HANDS





PORCELAIN & GLAS PAINTER KIDS

THE ULTIMATE PORCELAIN AND GLASS PAINT MARKER FOR CHILDREN

Kids love painting. These paint markers are perfect for capturing your child's creative moments on glass or porcelain objects. Make memories that last with your little one's own hand-decorated breakfast bowls, plates and cups.

- The extra thick point marker is the perfect size for children's hands.
- Water-based, odourless and best suited to children aged three years and over.
- The colour palette features 13 basic colours and the tip allows paint to be applied generously.
- The filter system is easy to use: paint is directed to the tip without the need to shake or pump the marker.
- Dishwasher-safe after firing.
- Suitable for porcelain, glass, metal, mirrors, ceramic, terracotta and stone.



Multi-purpose tip 1-3 mm 	
019	yellow 
013	orange 
031	cherry red 
033	rose pink 
005	raspberry 
251	violet 
090	light blue 
053	dark blue 
062	light green 
068	dark green 
285	brown 
078	grey 
073	black 

DRYING AND HEAT SETTING

Leave to dry for 4 hours, then fire in the oven for 30 minutes at 160 °C (do not preheat). Leave to cool down in the oven. Painted tableware should be washed at max. 50 °C on a glasses/cups cycle.



A VIVID PLAY OF COLOUR ON GLASS





GLASS

TRANSPARENT GLASS PAINT

Painted glass is perfect for capturing light and reflecting it back into the room in a multitude of colours. Transparent glass paints allow you to bring added splendour to decorated objects and their surroundings.

- The 18 different colours can be mixed and used to create a wide range of tones. Once dry, colours appear transparent. Black and white appear opaque.
- Water-based, odourless and lightfast.
- Dishwasher-safe without firing.
- Suitable for use on glass, porcelain, metal, mirrors, ceramic, terracotta, stone and different plastics, such as acrylic plastic and ABS.



020	lemon	
220	sunshine yellow	
013	orange	
125	cherry	
131	raspberry	
223	blackberry	
033	pink	
081	amethyst	
092	petrol	
057	gentian	
055	dark ultramarine	
293	night blue	
061	reseda	
062	light green	
068	dark green	
295	cocoa	
070	white	
073	black	

DRYING AND HEAT SETTING

Dry to the touch after 30 minutes and dishwasher-safe after 3 days. You can shorten the drying time by leaving the object to air dry for one hour then drying it in an oven heated to 100 °C for 30 minutes. When used together with the Porcelain & Glas Painter, both paints can be fired once dried (160 °C/30 min). Painted tableware should be washed at max. 50 °C on a glasses/cups cycle.



ARTISTIC CREATIONS: COLOUR AND LIGHT





GLAS ART

PROFESSIONAL GLASS PAINT

These sparkling and extravagant colours allow you to effortlessly create stylish glass art. Vivid paints turn simple glass into multi-coloured glass-ware that is sure to impress with intense colours that produce stunning visual effects.

- High-quality pigments provide impressive colour depth.
- Delivers results that are almost identical to authentic stained glass.
- Colour concept comprises 18 colours (black and white are opaque) as well as 6 stylish special effect colours. Fine flow for even application. Colours can be easily mixed and dry to a bright, transparent finish.
- High-quality organic solvent based paint.
- Very good light fastness, easy to mix, smudge-proof.
- For glass, porcelain, metal, mirrors, ceramic, terracotta, stone and acrylic plastic.



421	lemon	
420	yellow	
422	yellow orange	
436	vermilion	
432	carmine red	
434	bordeaux	
450	violet	
455	dark ultramarine	
458	parisian blue	
498	turquoise	
496	emerald	
407	dark green	
463	light green	
461	reseda	
440	brown	
470	white	
473	black	
400	clear	
270	pearl white	
787	metallic-copper	
582	glitter-silver	
584	glitter-gold	
586	glitter-red gold	
587	glitter iridescent	

DRYING AND HEAT SETTING

Dry to the touch after 30 minutes and completely dry after 2 days. You can shorten the drying time by leaving the object to air dry for 30 minutes then drying it in an oven heated to 150°C for 5 minutes. The paint is then smudge-proof and weather-resistant. Clean painted objects carefully using a damp cloth.



A SPECIAL TOUCH





RELIEF PASTE

CREATE OUTLINES STRAIGHT FROM THE TUBE

Soft lines and sparkling dots create elegant patterns and effects. Visible and tactile designs add a refined look to delicate glass objects and an elegant finish to porcelain vases. Our metallic and glitter paints conjure up an enchanting contrast between four different elements: glass, porcelain, metal and magic.

- Draw lines straight from the tube and then fill in colour.
- Water-based, odourless and lightfast.
- The range comprises 14 colours and includes the classic opaque colours (black and white), transparent colours as well as elegant metallic and glitter paints.
- The paint tip allows you to even create delicate designs and lettering.
- Dishwasher-safe without firing.
- Suitable for porcelain, glass, metal, mirrors, ceramic, terracotta, stone and many plastics, such as acrylic plastic and ABS.

125	cherry	
081	amethyst	
057	gentian	
061	reseda	
070	white	
073	black	
101	crystal clear	
770	metallic-white	
782	metallic-silver	
784	metallic-gold	
787	metallic-copper	
582	glitter-silver	
584	glitter-gold	
590	glitter-opal	

DRYING AND HEAT SETTING

Dry to the touch after 30 minutes and dishwasher-safe after 3 days. You can shorten the drying time by leaving the object to air dry for one hour then drying it in an oven heated to 100 °C for 30 minutes. Painted tableware should be washed at max. 50 °C on a glasses/cups cycle.





TIPS AND TRICKS FOR BRILLIANT RESULTS



TRANSFERRING DESIGNS

- **Onto glass:** fix the template behind the glass and trace the outline of the design, for example, using Relief Paste or the Painter. Once dry, fill in the design.
- **Onto porcelain:** trace the reverse side of the template with a soft pencil. Place the paper onto the porcelain, the traced side facing downwards. Go over the lines again firmly using a pencil. This should transfer the design onto the object.



PRE-CLEANING

Before painting, your porcelain or glass must be free from any grease. The best way to clean it is with a small sponge and hand-wash/cream cleanser, then rub off any finger prints with Marabu Cleaner or white spirit.

Do not use a dishwasher for pre-cleaning.



DO NOT PAINT CUTTING SURFACES OR GLASS RIMS

Cutlery can rub off or damage the design. Marabu porcelain and glass paints are intended for decorative purposes only and should not come into direct contact with any food items. We therefore recommend that when creating your tableware designs, you do not paint on cutting areas, inner surfaces or glass rims.



CORRECTING MISTAKES

Providing the paint is not completely dry, it is still possible to correct any mistakes or to completely remove the paint with either a cloth or a cotton bud and Marabu Cleaner or white spirit.

CLEANING EQUIPMENT

Clean brushes and equipment with Marabu Cleaner & Thinner or white spirit immediately after use.

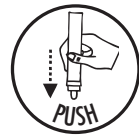


CLEANING THE TIPS

If the tip is stained or dried out, simply remove it from the shaft of the marker, clean with water and dry thoroughly. You may need to remove any ink remnants from the shaft before replacing the tip. Afterwards, reactivate the flow of ink to the tip.

ACTIVATING THE PORCELAIN & GLAS PAINTER (PUMP SYSTEM)

- Before first use, shake the paint marker vigorously with the cap on for 60 seconds.
- Gently press the tip onto a piece of scrap paper several times until the ink becomes visible. Make sure to wait in between. Once the flow of ink has been activated, the tip will slowly start to absorb paint until it is full. The length of time required for pumping depends on the type of tip.
- Test the marker on a neutral and absorbent surface.
- The paint applied will remain full and even if you pump the marker occasionally during use.
- Close the marker with the cap firmly after use, even when changing colours.
- Store the marker horizontally and briefly shake and re-pump before the next application.





GET IT RIGHT WITH THESE TRUSTED TECHNIQUES



AIRBRUSH

The paint is mixed with a stream of air inside the spray gun (nozzle size starting at 0.2 mm) and applied in very fine layers. You can create different effects by adapting the nozzle opening, changing the distance from the painting surface or by using stencils. Clean nozzles immediately after use, or between uses, thoroughly with water, or Cleaner & Thinner in the case of Glas Art.

Guidelines for individual products:

Marabu Porcelain: For pressure starting at 1.9 bar. Mix 1 part paint with 2 parts water.

Marabu Glas: For pressure starting at 2 bar. Marabu Glas is ready to use but it can be further diluted with water if required.

Marabu Glas Art: For pressure starting at 2.5 bar. Mix 3 parts paint with 1 part Marabu Cleaner & Thinner.





PAINING ON THE BACK OF GLASS



You can create outlines and designs with even greater depth and clarity by applying paint to the back of glass. As you will be working on the reverse side, all elements of the design that will appear in the foreground need to be painted first. Any designs featuring lettering must be applied back-to-front.



DECORATION AND LETTERING



The Porcelain & Glas Painter is compatible with four different tips: one for large-area application with a paint brush effect, two different stroke widths for painting and writing, as well as a calligraphy tip for stylish lettering. Decorations, lettering or shapes applied using the Relief Paste create raised effects on glass and porcelain. Glitter and glass beads can be applied to the paste when still wet. It can also be sculpted into different shapes or applied using a palette knife.





LARGE-AREA APPLICATION

Dab on the paint using a stencilling sponge or brush to create very fine areas with delicate transitions. You can produce a frosted effect by dabbing white Marabu Porcelain on glass. It's also possible to create patterns in the paint while still wet, e.g., by using a cotton bud. Glas Art can be applied using a pipette and evenly spread over the area using a toothpick.





FREEHAND PAINTING



Apply the liquid paint using a soft brush or, if using the Painter or Relief Paste, paint directly onto the chosen surface. Apply paint as evenly as possible using the brush so that it doesn't run. When working with round objects, use a turntable to ensure a straight line when applying paint using either brushes or markers.



OUTLINE TECHNIQUES



Draw raised outlines on glass and porcelain. Fix the design to the back of the glass and trace the outlines, or transfer the silhouette to the porcelain object and trace around it. Leave to dry for around 30 min before filling in the design using a brush and Marabu Glas, Glas Art or Porcelain.



STENCILLING



You can use self-adhesive stencils to create elaborate designs. Firmly press the stencil onto an even surface. Dab a stencil sponge or brush into the paint, gently shake off any excess and apply evenly to the stencil using a stipple effect. Use a painting knife to spread the Relief Paste over the design. Carefully lift off the stencil.



PORCELAIN & GLASS



Subject to change without prior notice. Differences in tone due to printing method. No liability for printing errors.



MORE INFORMATION



facebook.com/
MarabuChannel



youtube.com/
MarabuChannel



pinterest.com/
MarabuChannel

Marabu GmbH & Co. KG
Fritz-Lieken-Straße 7-9
D-74321 Bietigheim-Bissingen
Tel. + 49 7141 691 0
www.marabu.com/creative



since 1859
EXPERIENCE IDEAS QUALITY

