

# *THERMAL- PRINTER*

## *Selection Guide 2018*

Exit

GO

C-Link

*Seiko Instruments GmbH is not  
responsible for the content of this link.*

Seiko Instruments GmbH

# First selection of printer design



Thermal Printer Mechanisms



Exit

Mobile & Stand Alone Printers



Info

Panel Mount Printers



Driver



Kiosk Printers



POS Printers



SLP Printers



Internet  
connection  
necessary

## Paper-Width Selection

58mm Paper- Width

80mm Paper-Width



# Panel-Mount Printer **DPU-D3-00A-E**



Softwaretool for change  
Baudrate of serial line  
available upon request

- paper-width 80mm
- easy operation
- USB + serial interface 80 mm/s.
- 5V to 9V operating voltage
- 2 tear bars



## Interface Selection

Serial Interface

USB Interface



# Panel-Mount Printer **DPU-D2-00A-E**



Softwaretool for change  
Baudrate of serial line  
available upon request



Also available in black  
starting with 400 pcs.

Partnumber:

DPU-D2-02A-E

- paper-width 58mm
- easy operation
- USB + serial interface 100mm/s.
- 5V to 9V operating voltage
- 2 tear bars



## Paper-Width Selection

58mm

112mm



## Interface Selection

**Label print possible**

USB + Bluetooth®

USB + Serial

USB + Serial + Bluetooth®





# Mobile Printer **DPU-S245-00B-E**



KIT

- paper-width 58mm
- USB + serial
- printspeed 100mm/s.
- label print possible
- easy paper operation
- Windows Drivers (7, 8,8.1, 10) Android SDK, IOS SDK



Datasheet

# Mobile Printer 58mm Kit



## DPU-S245-Standard Kit



Typ	Interfaces	Country
DPU-S245-00B 10819-E	S/U	EU
DPU-S245-00B 10819-U	S/U	UK

### Includes:

- Printer **DPU-S245-00B-E**
- AC Adapter **PW-D0940-W2**
- AC Cable **CB-CE01-18B-E**  
(CB-UK01-20A-E for UK)
- Battery Pack **BP-L0716-A1**
- USB Cable **IFC-U01-1-E**
- Paper roll **MM58-17-38**
- or • Users guide

Accessories, not included: **PWC-L07C1-W1** Battery Charger, **IFC-S01-1-E** Serial cable RS232, **CVR-C01-1-E** Nylon carrying case



# Mobile Printer **DPU-S245-01B-E**



KIT

- paper-width 58mm
- Bluetooth® + USB + serial
- printspeed 100mm/s.
- label print possible
- easy paper operation
- Windows Drivers (7, 8,8.1,10)
- Android SDK IOS SDK



Datasheet

# Mobile Printer Bluetooth® Kit



## DPU-S245 BT Kit



Typ	Interfaces	Country
DPU-S245-01B 10819-E BT	S/U/BT	EU
DPU-S245-01B 10819-U BT	S/U/BT	UK

Including:

- Printer **DPU-S245-01B-E**
- AC Adapter **PW-D0940-W2**
- AC Cable **CB-CE01-18B-E**  
-UK01-20A-E for UK
- Battery Pack **BP-L0716-A1**
- USB Cable **IFC-U01-1-E**
- Paper roll **MM58-17-38**

or(CB

Accessories, not included: **PWC-L07C1-W1** Battery Charger, **IFC-S01-1-E** Serial cable RS232, **CVR-C01-1-E** Nylon carrying case



## Paper / Label Selection

Label Print Possible

No Label Print Possible



## Interface Selection

**Label print possible**

USB + Bluetooth or USB + WLAN

USB + RS232

USB + RS232 + Bluetooth®



# Mobile Printer **DPU-S445-00B-E**



KIT

Video

- paper-width 112mm
- interface USB + RS232
- print speed max. 90mm/s.
- easy paper operation
- single sheet possible

- label print possible
- 50mm roll diameter
- Windows Drivers (7, 8,8.1,10)
- Android SDK IOS SDK



Datasheet

# Mobile Printer 112mm Kit



## DPU-S445-Standard Kit



Typ	Interfaces	Country
DPU-S445-00B 10819-E	S/U	EU
DPU-S445-00B 10819-U	S/U	UK

Including:

- Printer **DPU-S445-00B-E**
- AC Adapter **PW-D0940-W2**
- AC Cable **CB-CE01-18B-E**  
or(CB-UK01-20A-E for UK )

- Battery Pack **BP-L0725-A1**
- USB Cable **IFC-U01-1-E**
- Paper roll **MM112-30-50**

Accessories, not included: **PWC-L07C1-W1** Battery Charger, **IFC-S01-1-E** Serial cable RS232, **CVR-B01-1-E** Nylon carrying case





# Mobile Printer **DPU-S445-01B-E**



[KIT](#)

[Video](#)

- paper-width 112mm
- interface Bluetooth® + RS232
- print speed max. 90mm/s.
- easy paper operation
- single sheet possible

- label print possible
- 50mm roll diameter
- Windows Drivers (7, 8.8,1,10)
- Android SDK



[Datasheet](#)

# Mobile Printer Bluetooth® Kit



## DPU-S445-BT Kit



Typ	Interfaces	Country
DPU-S445-01B 10819-E BT	S/U/BT	EU
DPU-S445-01B 10819-U BT	S/U/BT	UK

Including:

- Printer **DPU-S445-01B-E**
- AC Adapter **PW-D0940-W2**
- AC Cable **CB-CE01-18B-E**  
or(CB-UK01-20A-E for UK )

- Battery Pack **BP-L0725-A1**
- USB Cable **IFC-U01-1-E**
- Paper roll **MM112-30-50**

Accessories, not included: **PWC-L07C1-W1** Battery Charger, **IFC-S01-1-E** Serial cable RS232, **CVR-B01-1-E** Nylon carrying case



## Resolution-Selection

Stand Alone 9 x 320 Serial Dot Printer



# Mobile Printer 112mm



Resolution 200 dpi **Label Print Possible**

## Interface Selection

Serial + USB

Bluetooth<sup>®</sup> + Serial + USB



# Mobile Printer 112 mm

## MP-A40-B / MP-A40-W



- ESC/POS™ conformity,
- CPCL conformity,
- Markup Language (subset)
- Windows, Android, iOS
- -20° to 50° Celsius

- Paper width: 112mm (80-, 100-, 105 mm possible)
- Print speed: 105 mm/sec.
- IP54
- **USB & Bluetooth™ Version**
- **USB & WLAN Version**

[Kits](#)

[Accessoires](#)

[Video](#)

[Datasheet](#)



## MP-A40 Kits

Type	Interfaces	AC-cable for Country
<b>MP-A40 B06JK1 10819-E</b>	BT / USB	EU
<b>MP-A40 B06JK1 10819-U</b>	BT / USB	UK
<b>MP-A40-W06JK1E 10819-E</b>	WLAN / USB	EU
<b>MP-A40-W06JK1E 10819-U</b>	WLAN / USB	UK

Kit includes:

AC Adapter: [PW-D0940-W2](#)

AC Cable: [CB-CE01-18B-E](#) (EU) /or [CB-UK01-20A](#) (UK)

Li-Ion Battery Pack : [BP-A0720-A1](#)

USB cable: [IFC-U01-1-E](#)

Thermalpaper: [sample roll](#)

[Accessoires](#)

[Datasheet](#)



# Overview MP-A40 Accessoires

AC Adapter(5): **PW-D0940-W2**

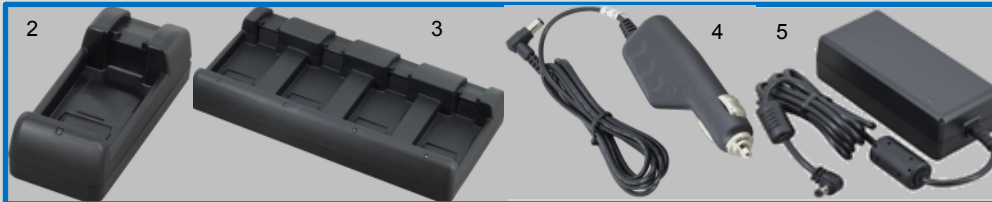
AC Cable EU: **CB-CE01-18B-E**

AC cable UK: **CB-UK01-20A**

USB cable: **IFC-U01-1-E**

Thermalpaper roll :**MM112-40-58**

Shoulder Strap for MP-A40 Series: **STR-A3-1**

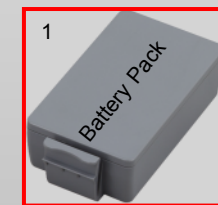


Single Battery charger for MP-A40 Series (2): **PWC-A071-A1**

Car charger for MP-A40 Series (3): **CC-A12-A1**

Quad Battery Charger for MP-A40 Series (4): **PWC-A074-A1**

Li-Ion Battery Pack (1): **BP-A0720-A1**



# Mobile Printer 58 mm

## MP-B20



- Very small and lightweight
- Withstand drops from up to 1,5m
- ESC/POS™ conformity,
- USB style battery charger
- Windows, Android, iOS
- -10°to 50°Celsius

- Paper width: 58mm
- Outer diameter paper roll 40mm
- Print speed: 80 mm/sec.
- **USB & Bluetooth™ Version**

Kits

Accessoires

 Video

Datasheet





# Overview MP-B20 Kit



## MP-B20 Kit

Type

**MP-B20-B02JK1-74**

Interfaces

BT / USB

Kit includes:

Belt-clip: **BLT-B01-1**

Li-Ion Battery Pack : **BP-B0326-A1**

USB cable: **IFC-U03-1**

Thermalpaper: **sample roll**



Accessories

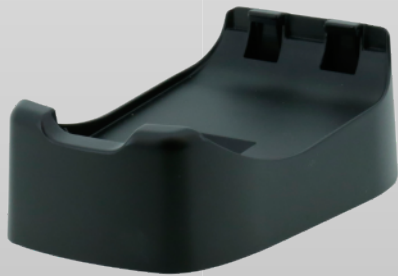
Datasheet



# Overview MP-B20 Accessoires



- Cradle for MP-B20: **CDL-B01K-1**
- Li-Ion Battery Pack: **BP-B0326-A1**
- USB cable: **IFC-U03-1**
- Thermalpaper roll: **MM58-20-40**
- Belt Clip for MP-B20: **BLT-B01-1**



Cradle



Battery Pack



Belt Clip



# Stand-Alone Printer, 112mm

## DPU-414-50B-E



Accessoires

- paper-width 112mm
- interface serial + parallel
- print speed max. 52.5 character/s.



Datasheet

## DPU-414-50B-E

Type	Description
<b>PW-C0725-W2-E</b>	AC adapter 220V wall plug
<b>BP-4005-E</b>	Rechargeable battery DPU-414

Info for  
Power supply compatibility



Datasheet

## Head-Type Selection

Thermal Line Head

Serial Moving Thermal-Head



Character or Graphic Head  
Selection

Character Print

Graphic Print



# Serial-Head Printer

## Character Printout

### Paper-Width Selection

38mm Paper-Width

58mm Paper-Width

80mm Paper-Width



# Serial-Head Printer

## Character 58mm

Character per Line Selection

20 Character/Line

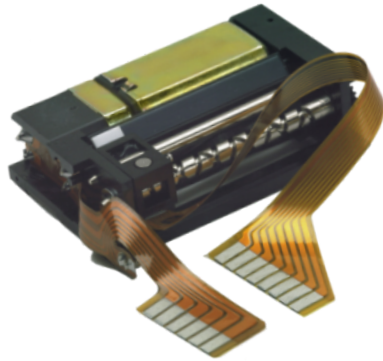
24 Character/Line





# Serial Head Mechanism 38mm

## MTP102-16B-E



- paper-width 38mm
- 16 character/line
- print speed 1.2 character lines/s.



# Serial Head Mechanism 38mm

## MTP201-20B-E



- paper-width 58mm
- 20 character/line
- print speed 1.0 character lines/s.



# Serial Head Mechanism 58mm

## MTP201-24B-E

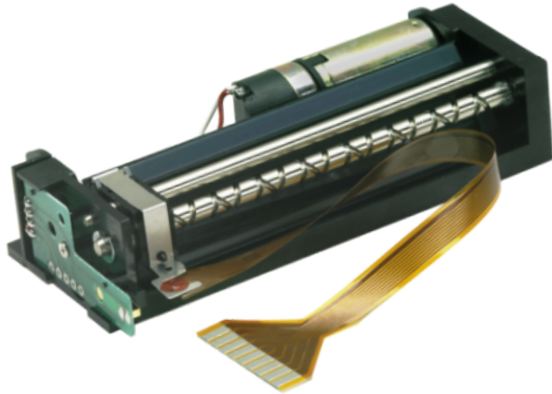


- paper-width 58mm
- 24 character/line
- print speed 0.9 character lines/s.



# Serial Head Mechanism 80mm

## MTP401-40B-E



- paper-width 80mm
- 40 character/line
- print speed 0.5 character lines/s.



# Serial-Head Printer

## Graphic Printout

### Paper-Width Selection

58mm Paper-Width

112mm Paper-Width



# Serial Head Mechanism 58mm



## MTP201G-166-E



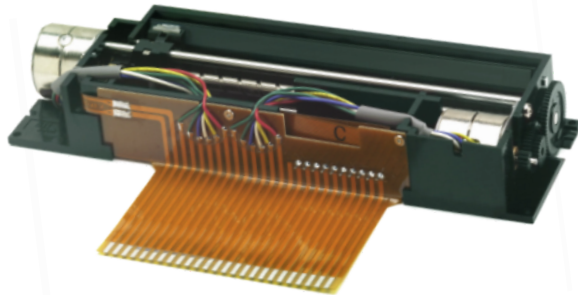
- paper-width 58mm
- graphic 166 dots/line (8x166)
- print speed 0.9 character lines/s.



# Serial Head Mechanism 112mm



**STP411B-320-E** without flexcable



**STP411G-320-E** version with flexcable

- paper-width 112mm (2 motors)
- graphic 320 dots/line (9x320)
- print speed 0.78 character lines/s.



## Head Voltage Selection

5V DC (Battery Type Printer)

24V DC





## Paper-Width Selection

2 inch 58/60mm

3 inch 80/82.5mm

4 inch 112mm



# 5V Thermal-Line-Head Printer



## 58/60mm

### Paper Load Selection

Automatic Paper Load

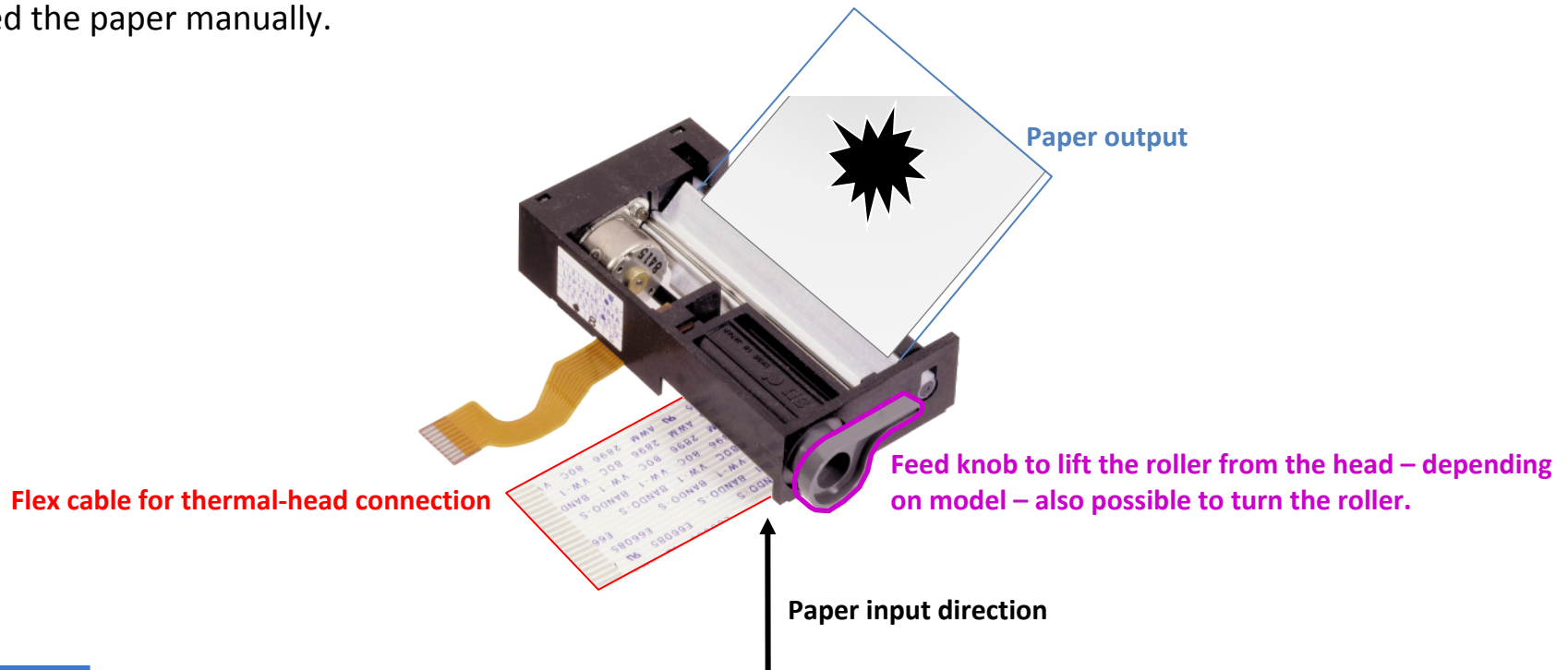


Easy Paper Operation (EZOP)



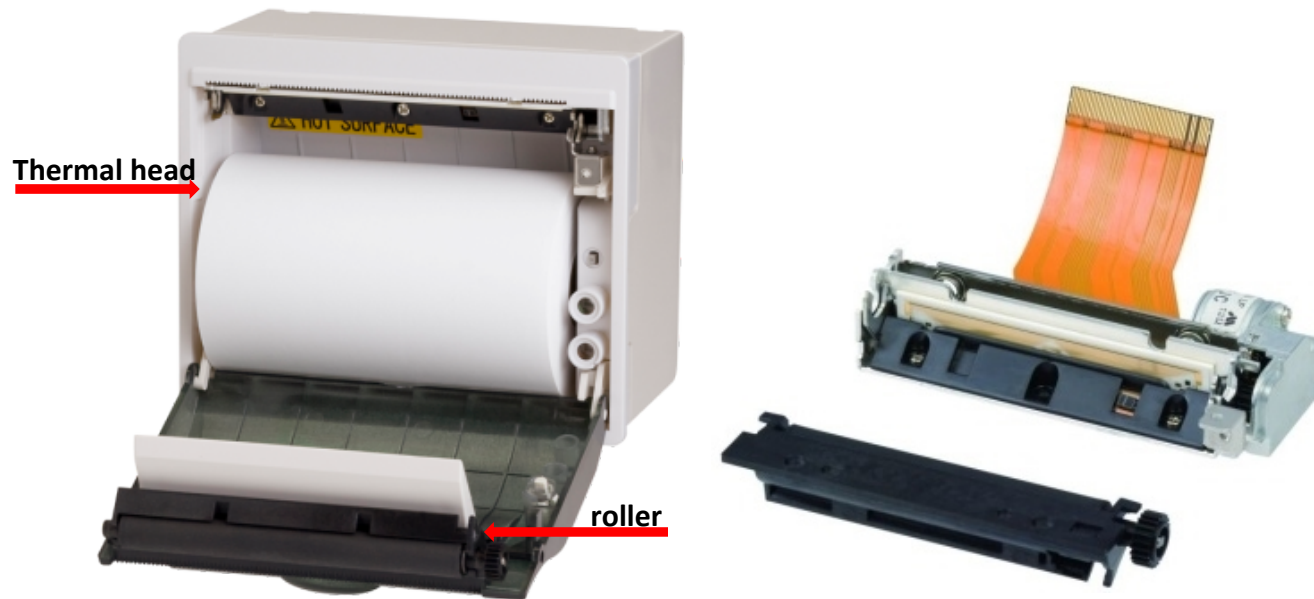
# What is Automatic Paper Loading ? SII

automatic paper loading needs a manual insertion of the paper into the paper slot. Then the printer moves the roller to automatically feed the paper into the mechanism. The platen roller cannot be removed from the mechanism completely. In some cases the roller can be lifted by a knob to remove or feed the paper manually.



# What is Easy Paper Operation (EZOP)? SII

Easy paper operation allows for a complete removal of the platen roller from the thermal head. The roller is mounted on the door. Therefore, the paper can simply be placed into the printer, without needing a paper slot. Just open the door and put the paper roll inside. By closing the door, the paper is pressed against the thermal head by the roller. It's as easy as that.



# 5V Line-Head Printer 58/60mm



## Automatic Paper Load

Cutter Selection

without Cutter

with Cutter



# 5V Line-Head Printer 58/60mm w/o cutter Automatic Paper Load



Print Speed Selection

max. 60mm/s. 6V mechanism 6 dots/mm

max. 62.5mm/s.



# Mechanism Series 5V 58mm



## Automatic Paper Load **LTP1245x-y384-E**



Overview

- paper-width 58mm
- print speed 62.5mm/s. max.
- cutter and interface as accessories available
- curved and straight paper path and also with and without knob available



Datasheet

# Overview 5V, 58mm, 62.5mm/s.



## Automatic Paper Load

### LTP1245 Series

Type	Paper Path & Knob	Applicable Cutter w. Full Cut
<b>LTP1245R-C384-E</b>	curved w/o feed knob	<b>ACU-6205A-E</b>
<b>LTP1245S-C384-E</b>	curved with feed knob	<b>ACU-6205A-E</b>
<b>LTP1245T-S384-E</b>	straight w/o feed knob	<b>ACU-6205A-E</b>
<b>LTP1245U-S384-E</b>	straight with feed knob	<b>ACU-6205A-E</b>

Mounting plate for LTP125 (**OP-L1245A-E**) and motor / sensor cable (**CONN-MOS1245S-90°-E** /**CONN-MOS-1245S-E**) and thermal-head connection cable (**CONN-TH1245-S-E**) are available. Also CPU (**PT110P01-E** serial TTL)

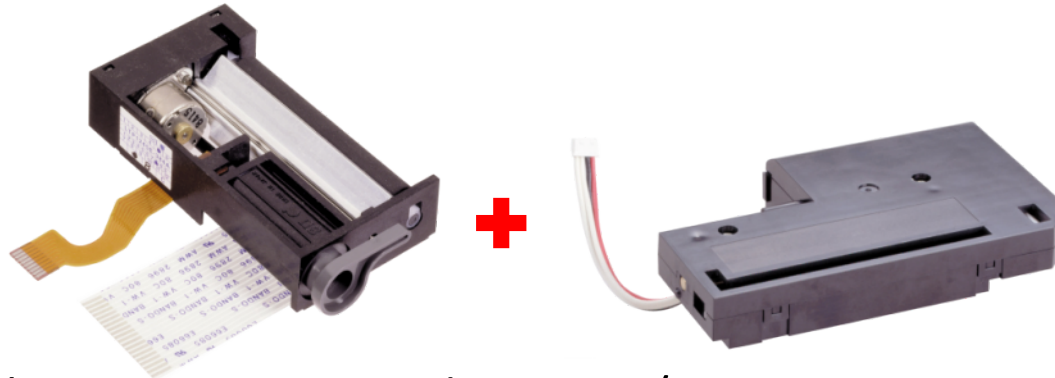




# Mechanism Series 5V 58mm

## Automatic Paper Load

**LTP1245x-y384-E + ACU6205A-E**



Overview

- paper-width 58mm, print speed 62,5mm/s. max.
- additional Cutter **ACU6205A-E** full
- interface with serial (TTL) and parallel 8 bit available
- curved and straight paper path and also with and without knob available

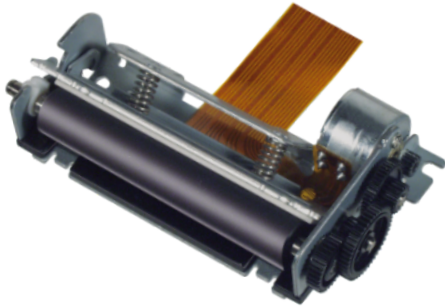


Datasheet

# Mechanism Series 6V 58mm



## Automatic Paper Load **LTP8235G-C288-E**



Overview

- resolution 6 dots/mm, paper-width 58mm
- prints peed 40 (6.0V), 50 (7.2V), 60 (8.0V)mm/s. max.
- without head up lever and with sensor



Datasheet

# Overview 6V, 58mm, 60mm/s.



## Automatic Paper Load

### LTP8235 Series

Type	Description of Details
LTP8235G-C288-E	Without head up lever with sensor



## Paper Load Selection

**Automatic Paper Load** (not available at this moment)



**Easy Paper Operation (EZOP)**



# 5V Line-Head Printer 58mm

## Easy Paper Operation



Cutter Selection

without Cutter

with Cutter



# 5V Line-Head Printer 58mm w/o Cutter Easy Paper Operation



Resolution Selection

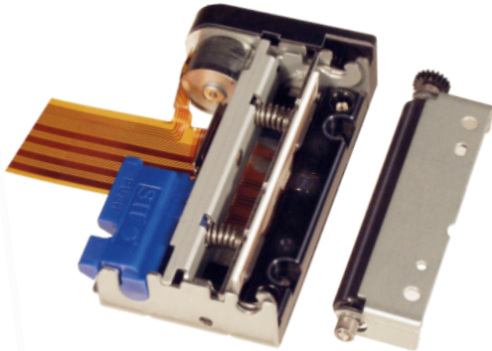
6 dots /mm

8 dots/mm (Standard)



# 5V 58mm EZOP w/o Cutter

## 6 dots/mm **LTPC235E-C288-E**



- paper-width 58mm, print speed 60mm/s. max.
- no interface, no chipset available



## Print Speed Selection

25mm/s.

Operating Temperature -30°C-+70°C

65mm/s.

75mm /s.

100mm/s.





# 5V Line-Head Printer 58mm w/o Cutter EZOP 100mm/s.



## Version Selection

100mm/s .  
LTPD-Series mit latch function

100mm/s.  
LTP02-Series (Typical OEM-product)



# 5V 58mm EZOP w/o Cutter

## 8 dots/mm **LTP02-245-13**



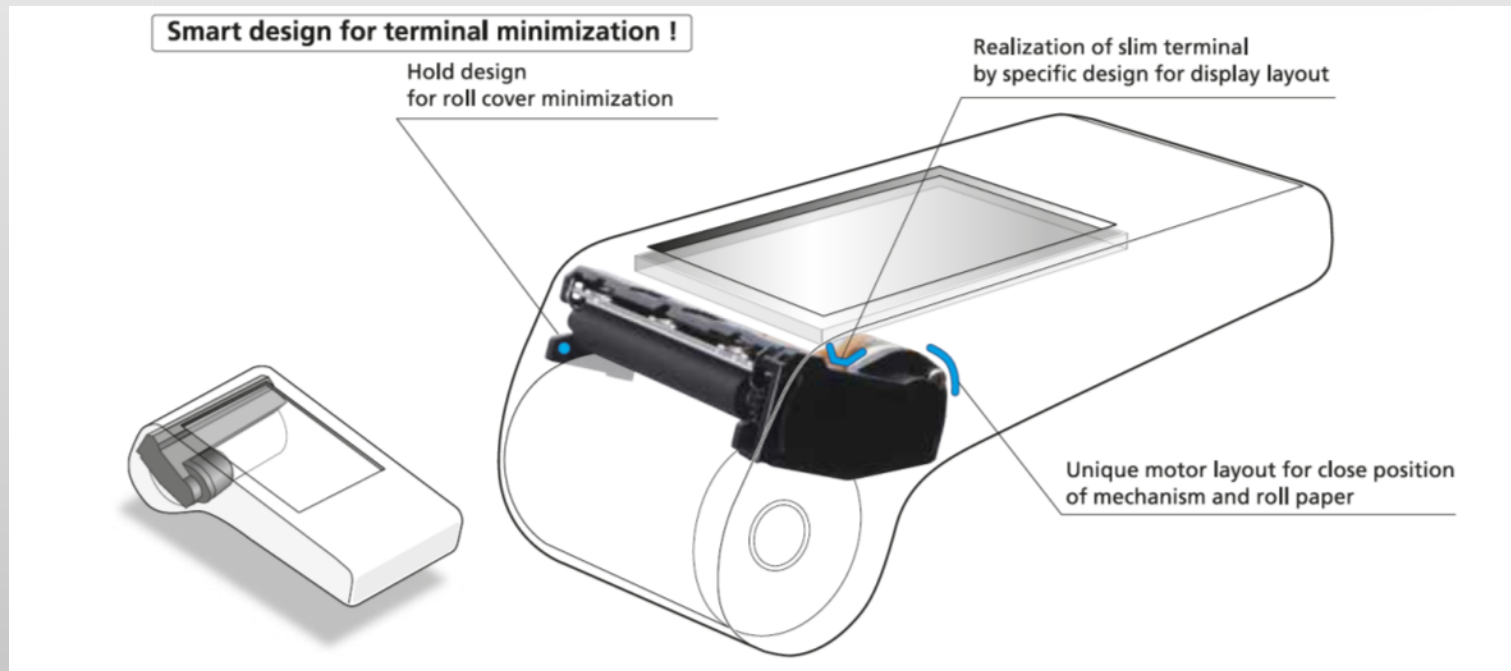
Design

- max. printing speed: 100 mm/s
- extremely small design for mobile terminal applications
- light weight, only 28 g



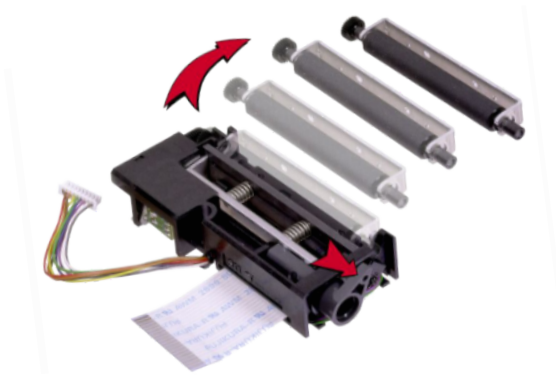
Datasheet

## LTP02-245-13



# 5V 58mm EZOP w/o Cutter

## 8 dots/mm **LTPH245D-C384-E**

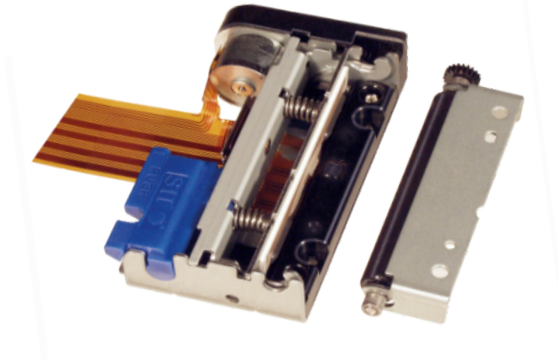


- paper-width 58mm,
- print speed 25mm/s. 5V to 60 mm/s. 8V max.
- **operating Temperature -30°C- +70°C**



# 5V 58mm EZOP w/o Cutter

## 8 dots/mm **LTPC245G-C384-E**



- paper-width 58mm,
- print speed 65mm/s. max.
- no interface, no chipset available



# 5V Line-Head Printer 58mm w/o Cutter Easy Paper Operation



## Version Selection

75mm/s. -20°C - +50°C  
LTPZ-Series (Typical OEM-product)

75mm/s. 0°C - +50°C  
LTP01-Series (Typical OEM-product)

75mm/s. with Platen Latch Function  
Ultra Small (LTPU245)

75mm/s. with Platen Latch Function  
LTPJ245 (compact design)



# 5V 58mm EZOP w/o Cutter

## 8 dots/mm **LTP01-245-x**



[Overview](#)

- max. printing speed: 75mm/s
- compact and light-weight
- compatible model with LTPZ245(horizontal)



[Datasheet](#)

## LTP01-245x-series

Type	Platen detecting switch
LTP01-245-11	No
LTP01-245-12	Yes





# 5V 58mm EZOP w/o Cutter

## 8 dots/mm **LTPU245A-384-E**



- extremely small version, very light version (30g)
- paper-width 58mm, print speed 75mm/s
- platen latch function
- **operating temperature -10°C - +50°C**
- no interface , no chipset available

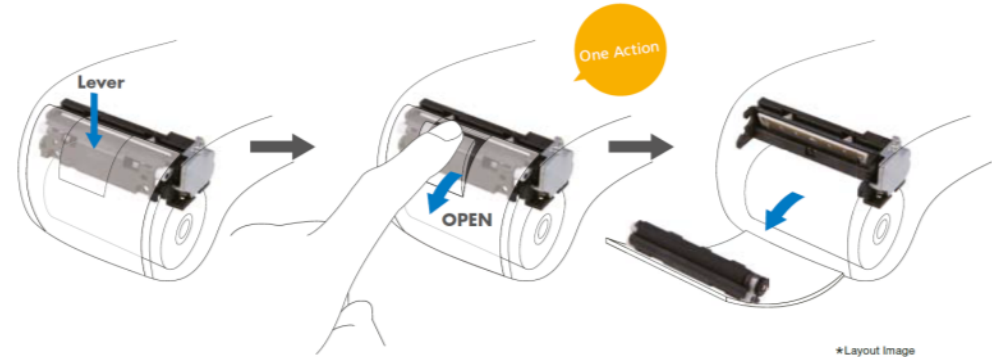


# 5V 58mm EZOP w/o Cutter

## 8 dots/mm **LTPJ245D-S384-E**



**New Latch mechanism** The highly innovative latch mechanism provides most natural and easiest operation when paper reloading.

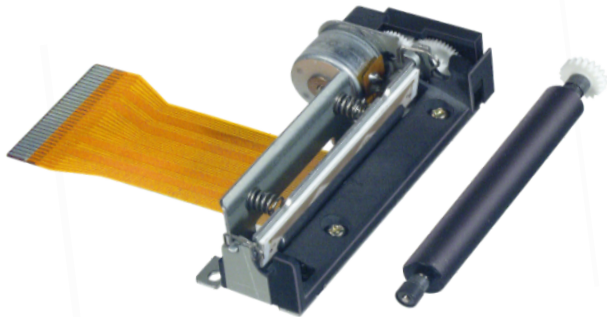


- Front open mechanism with latch
- paper-width 58mm, print speed 75mm/s
- **operating temperature -10°C - +50°C**
- no interface , no chipset available



# 5V 58mm EZOP w/o Cutter

## 8 dots/mm **LTPZ245x-C384-E series**



Overview

- small version, paper-width 58mm, print speed 75 mm/s
- no interface , CPU available on request.
- typically OEM version



Datasheet

# Overview 5V, 58mm, EZOP



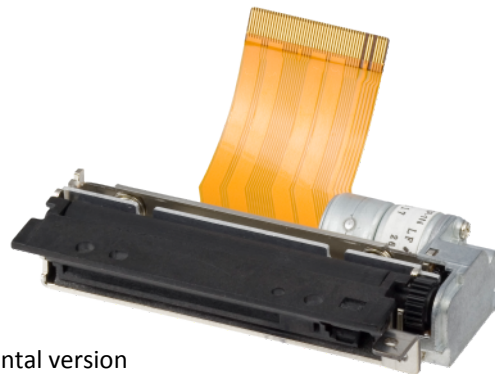
## LTPZ245x-C384-E Series

Type	Motor	Sensor
LTPZ245M-C384-E	behind	1 sensor
LTPZ245N-C384-E	underneath	1 sensor
LTPZ245U-C384-E	behind	2 sensors for fiscal printers

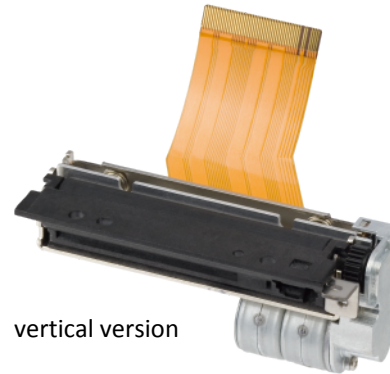


# 5V 58mm EZOP w/o Cutter

## 8 dots/mm **LTPD245x-384-E Series**



horizontal version



vertical version

Overview

- paper-width 58mm, print speed 100mm/s
- **operating temperature -30°C - +70°C**
- interface and chipset available.
- also available with cutter and as a 24V version



Datasheet

# Overview 5V, 58mm, EZOP



## LTPD245x-384-E Series

Type	Motor	Sensor
<b>LTPD245A-384-E</b>	horizontal	1 Sensor
<b>LTPD245B-384-E</b>	vertical	1 Sensor

Interfaces: **IFD501-01UK-E** (USB), **IFD501-01SK-E** (serial)

CPU: **PTD50-P01-E**

CG ROM & Memory : **PTJCGG2-E** (also needed for function settings store and keep it after power off)

USB cable for Interface: **IFC-U01-1-E**



# 5V Line-Head Printer 58mm w. Cutter Easy Paper Operation



Print Speed Selection

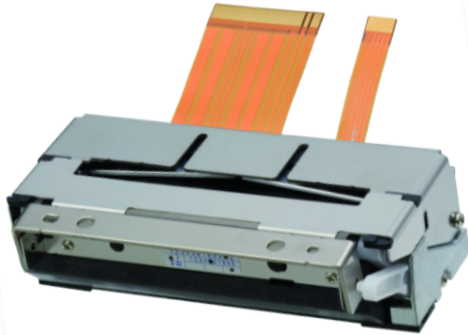
100mm/s.

Operating Temperature -10°C - + 50°C



# 5V 58mm EZOP w. Cutter

## 8 dots/mm **CAPD245x-E** Series



Overview

- full and partial cut, paper-width 58mm, print speed 100mm/s
- interface and chipset available
- interfaces: **IFD501-01UK-E** (USB), **IFD501-01SK-E** (serial)
- CPU: **PTD50-P01-E**, cables for power, switch, serial and USB connection available



Datasheet



# Overview 5V, 58mm, EZOP



## CAPD245x-E Series

Type	Metal ground plate protection
<b>CAPD245D-E</b>	no
<b>CAPD245E-E</b>	yes

Interfaces: **IFD501-01UK-E** (USB), **IFD501-01SK-E** (serial)

CPU: **PTD50-P01-E**

CG ROM & Memory : **PTJCGG2-E** (also needed for function settings store and keep it after power off)

USB cable for Interface: **IFC-U01-1-E**



# 5V Line-Head Printer 80mm

## Easy Paper Operation



Cutter Selection

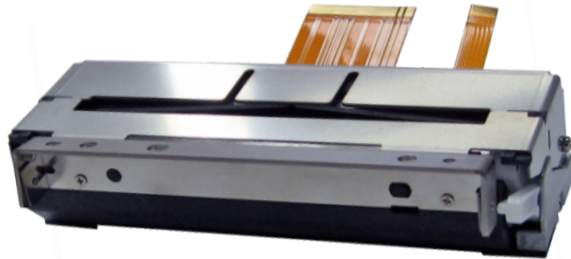
without Cutter

with Cutter



# 5V 80mm EZOP w. Cutter

## 8 dots/mm **CAPD345x-E** Series



Overview

- full and partial cut, paper-width 80mm, print speed 80mm/s
- interface and Chipset available
- interfaces: **IFD501-01UK-E** (USB), **IFD501-01SK-E** (serial)
- CPU: **PTD50-P01-E**, cables for power, switch, serial and USB connection available



Datasheet

# Overview 5V, 80mm, EZOP



## CAPD345x-E Series

Type	Metal ground plate protection
<b>CAPD345D-E</b>	no
<b>CAPD345E-E</b>	yes

Interfaces: **IFD501-01UK-E** (USB), **IFD501-01SK-E** (serial)

CPU: **PTD50-P01-E**

CG ROM & Memory : **PTJCGG2-E** (also needed for function settings store and keep it after power off)

USB cable for Interface: **IFC-U01-1-E**



# 5V Line-Head Printer 80mm w/o Cutter Easy Paper Operation



Print Speed Selection

45mm/s. at 5V (85mm/s. 8,5V)

max. 80mm/s.



# 5V 80mm EZO w/o Cutter

## 8 dots/mm **LTPD345x-576-E** Series



Overview

- paper-width 80mm, print speed 80mm/s
- **operating temperature -30°C - + 70°C**
- interface and chipset available.
- also 24V version and version with cutter available



Datasheet

# Overview 5V, 80mm, EZOP



## LTPD345x-576-E Series

Type	Motor	Sensor
LTPD345A-576-E	horizontal	1 sensor
LTPD345B-576-E	vertical	1 sensor
LTPD345D-576-E *	horizontal	2 sensors for fiscal printers

Interfaces: IFD501-01UK-E (USB), IFD501-01SK-E (serial)

CPU: PTD50-P01-E

CG ROM & Memory : PTJCGG2-E (also needed for function settings store and keep it after power off)

USB cable for Interface: IFC-U01-1-E

\* Off Promotion



# 5V 80mm EZOP w/o Cutter

## 8 dots/mm **LTPV345C-576-E**



- paper-width 80mm, print speed 45mm/s 5V, 85mm/s 8.5V
- interface **IFV101-01B-E**, CPU **PTV10P01-E**
- paper thickness up to 125 $\mu$ m





# 5V 112mm EZOP w/o Cutter

## 8 dots/mm **LTPV445C-832-E**

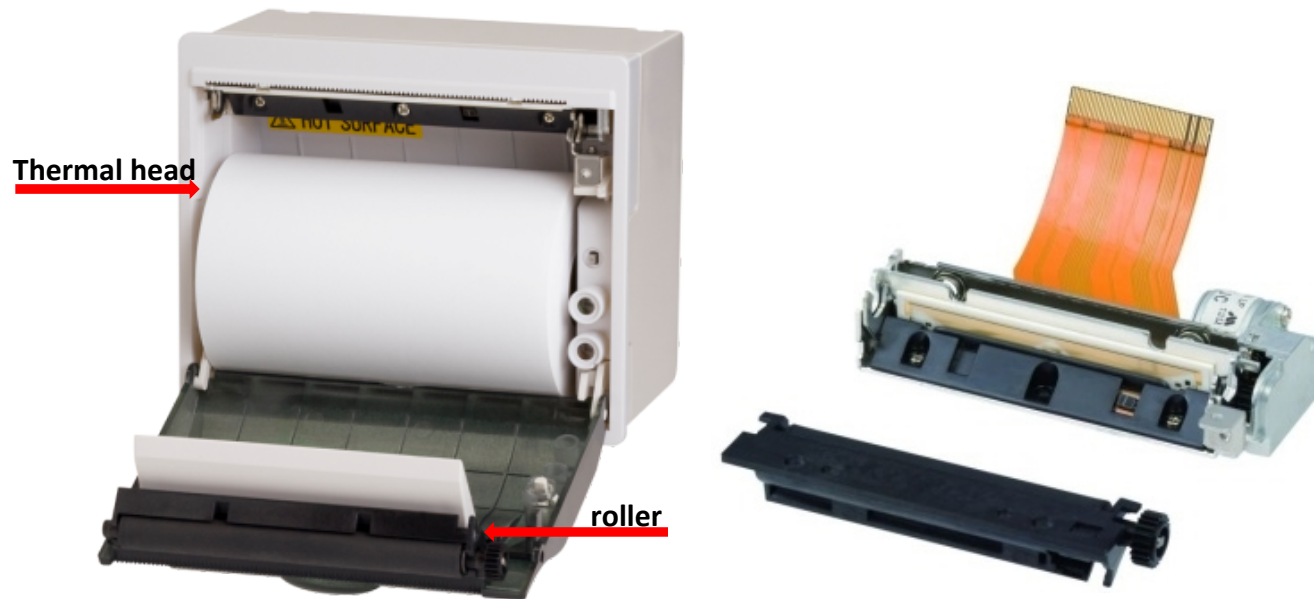


- paper-width 112mm, print speed 45mm/s 5V, 85mm/s 8.5V
- interface **IFV101-01B-E**, CPU **PTV10P01-E**
- paper thickness up to 125 $\mu$ m



# What is Easy Paper Operation (EZOP)? SII

Easy paper operation allows for a complete removal of the platen roller from the thermal head. The roller is mounted on the door. Therefore, the paper can simply be placed into the printer, without needing a paper slot. Just open the door and put the paper roll inside. By closing the door, the paper is pressed against the thermal head by the roller. It's as easy as that.



## Paper-Width Selection

2 inch 58/60mm

3 inch 80/82.5mm

4 inch 112mm



## Paper Load Selection

Automatic Paper Load



Easy Paper Operation (EZOP)



## Automatic Paper Load

Cutter Selection

without Cutter

with Cutter



# 24V Line-Head Printer 58/60mm w/o Cutter Automatic Paper Load



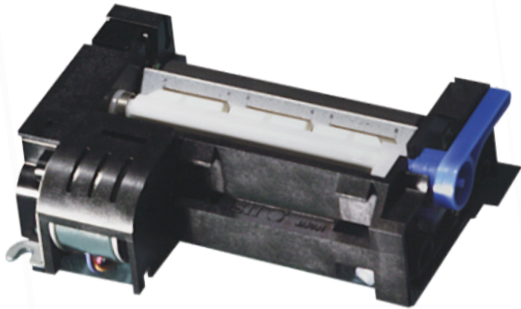
Print Speed Selection

90mm/s.



# 24V 60mm w/o Cutter Automatic Paper Load **LTP2242x-y432A-E**

SII 



[Overview](#)

- paper-width 60mm, print speed 90mm/s
- **thick paper and label print possible at straight paper path**
- interface, chipset and cutter available



[Datasheet](#)

# Overview 24V, 60mm, 90mm/s.



## Automatic Paper Load

### LTP2242-series

Type	Paper Path	Compatible Interface	Applicable Cutter Full & Partial	Applicable CPU
<b>LTP2242C-S432A-E</b>	Straight	<b>IF2305-01B-E</b> (8bit parallel & serial (TTL)) <b>IF2304-01UK-E</b> USB	<b>ACU2224F-A-E</b>	<b>PT230P01-E</b>
<b>LTP2242D-C432A-E</b>	Curved	<b>IF2305-01B-E</b> (8bit parallel & serial (TTL)) <b>IF2304-01UK-E</b> USB	<b>ACU2224F-A-E</b>	<b>PT230P01-E</b>

Thermal Head cable 220mm Standard Connection Pin1-Pin1 [CONN-CABLE-TH2000-E\(1-1\)](#)

Thermal Head cable 220mm Cross Connection Pin1-Pin16 [CONN-CABLE-TH2000-E\(1-16\)](#)





# 24V Line-Head Printer 58/60mm w. Cutter Automatic Paper Load



## Print Speed Selection

90mm/s.

250mm/s.

Operating Temperature -20°C - +50°C

300mm/s.

Operating Temperature -20°C - +50°C



# 24V 58/60mm with Cutter

SII 

## Automatic Paper Load **CAP9247E-S448-E**



[Overview](#)

- paper-width 58/60mm, print speed 250mm/s
- thick paper possible up to 155  $\mu\text{m}$  at straight paper path
- **operating temperature -20°C - +60°C**



[Datasheet](#)

# Overview 24V, 58/60mm, 250mm/s. SII

## Automatic Paper Load

### CAP9247E-S448-E

Type with Cutter	Paper Path	Compatible Interface
<b>CAP9247E-S448-E</b>	straight	<b>IF9001-02U-E</b> (USB) <b>IF9001-03S-E</b> (serial)

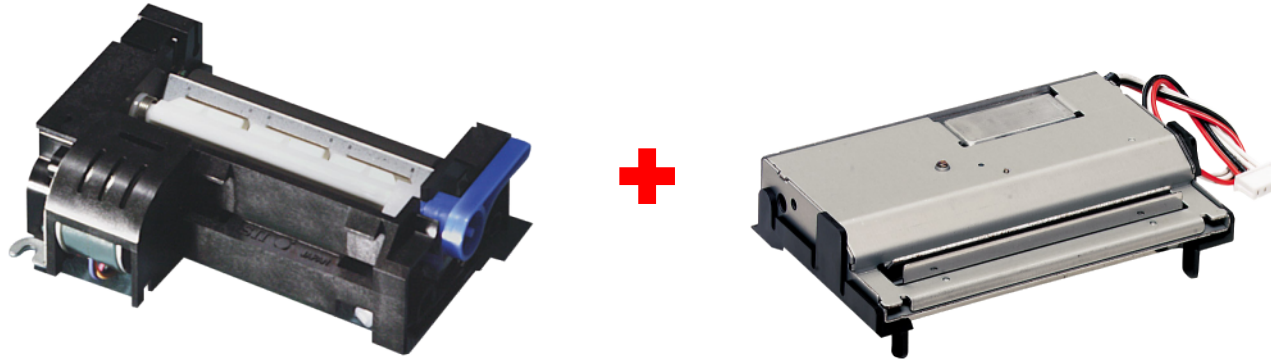
Head Connector cable for connection Interface - mechanism : **IFC-94020A-E** (200mm) discontinued



# 24V 60mm w. Cutter

SII 

## Automatic Paper Load **LTP2242x-y432A-E**



[Overview](#)

- paper-width 60mm, print speed 90mm/s
- **thick paper and label print possible at straight paper path**
- interface and chipset available



[Datasheet](#)

# Overview 24V, 60mm, 90mm/s.



## Automatic Paper Load

### LTP2242x-y432 Series

Type	Paper Path	Compatible Interface	Applicable Cutter Full & Partial	Applicable CPU
<b>LTP2242C-S432A-E</b>	straight	<b>IF2305-01B-E</b> (8bit parallel & serial (TTL)) <b>IF2304-02UK-E</b> (USB)	<b>ACU2224F-A-E</b>	<b>PT230P01-E</b>
<b>LTP2242D-C432A-E</b>	curved	<b>IF2305-01B-E</b> (8bit parallel & serial (TTL)) <b>IF2304-02UK-E</b> (USB)	<b>ACU2224F-A-E</b>	<b>PT230P01-E</b>

Thermal Head cable 220mm Standard Connection Pin1-Pin1 **CONN-CABLE-TH2000-E(1-1)**

Thermal Head cable 220mm Cross Connection Pin1-Pin16 **CONN-CABLE-TH2000-E(1-16)**



# 24V 58-82mm w. Cutter

SII 

## Automatic Paper Load **CAPM347 Series**



[Overview](#)

- max. printing speed: 300mm/s (standard paper)
- built-in auto cutter partial and full cut
- heavy-duty : 200km abrasion , 2Mio. Cuts (standard paper)
- **wide operating temperature : -20°C to 60°C**
- various drivers



[Datasheet](#)

# Overview 24V, 58-82mm, 300 mm/s. SII

## Automatic Paper Load

### CAPM347 Series

Type w. Cutter	Paper	Compatible Interface	Applicable Chipset
<b>CAPM347H</b>	standard paper	IFM201-01UK-E (USB) IFM201-01SK-E (Serial) discontinued	PTM20P01 (CPU) CGJG-01 (ROM)
<b>CAPM347E</b>	thick paper	IFM201-01UK-E (USB) IFM201-01SK-E (Serial) discontinued	PTM20P01 (CPU) CGJG-01 (ROM)

Thermal Head cable 200mm: [IFC-M2220A-E](#)

Serial cable: [IFC-S01-1-E](#)



# 24V 58-82mm w. Cutter

SII 

## Automatic Paper Load **CAPM347 Series**



[Overview](#)

- max. printing speed: 300mm/s (standard paper)
- built-in auto cutter, partial and full cut
- heavy-duty : 200km abrasion, 2mMio. Cuts (standard paper)
- **wide operating temperature : -20°C to 60°C**
- various drivers



[Datasheet](#)



# Overview 24V, 58-82mm, 300mm/s. SII

## Automatic Paper Load

### CAPM347 Series

Type w. Cutter	Paper	Compatible Interface	Applicable Chipset
<b>CAPM347H</b>	standard paper	IFM201-01UK-E (USB) IFM201-01SK-E (Serial) discontinued	PTM20P01 (CPU) CGJG-01 (ROM)
<b>CAPM347E</b>	thick paper	IFM201-01UK-E (USB) IFM201-01SK-E (Serial) discontinued	PTM20P01 (CPU) CGJG-01 (ROM)

Thermal Head cable 200mm: [IFC-M2220A-E](#)

Serial cable: [IFC-S01-1-E](#)



## Paper Load Selection

Automatic Paper Load



Easy Paper Operation (EZOP)



## Automatic Paper Load

Cutter Selection

without Cutter

with Cutter



# 24V Line-Head Printer 80/82.5mm w/o Cutter Automatic Paper Load



Print Speed Selection

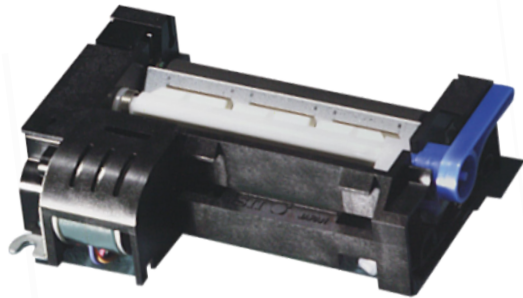
75mm/s.



# 24V 80mm w/o Cutter

SII 

## Automatic Paper Load **LTP2342x-y576A-E**



[Overview](#)

- paper-width 80mm, print speed 75mm/s
- **thick paper and label print possible at straight paper path**
- interface and chipset and cutter available.



[Datasheet](#)

# Overview 24V, 80mm, 75mm/s.



## Automatic Paper Load

### LTP2342x-y576 Series

Type	Paper Path	Compatible Interface	Applicable cutter Full & Partial	Applicable CPU
<b>LTP2342C-S576A-E</b>	straight	<b>IF2305-01B-E</b> (8bit parallel & serial (TTL)) <b>IF2304-01UK-E</b> USB	<b>ACU2324C-A-E</b>	<b>PT230P01-E</b>
<b>LTP2342D-C576A-E</b>	curved	<b>IF2305-01B-E</b> (8bit parallel & serial (TTL)) <b>IF2304-01UK-E</b> USB	<b>ACU2324C-A-E</b>	<b>PT230P01-E</b>

Thermal Head cable 220mm Standard Connection Pin1-Pin1 **CONN-CABLE-TH2000-E(1-1)**

Thermal Head cable 220mm Cross Connection Pin1-Pin16 **CONN-CABLE-TH2000-E(1-16)**



# 24V Line-Head Printer 80/82.5mm w. Cutter Automatic Paper Load



## Print Speed Selection

75mm/s.

250mm/s.

Operating Temperature -20°C - +50°C

300m/s.

Operating Temperature -20°C - +60°C  
thick paper model 0°C -50°C



# 24V 80/82.5mm w. Cutter

SII 

## Automatic Paper Load **CAP9347E-S640-E**



[Overview](#)

- paper-width 80/82.5mm, print speed 250mm/s
- **thick paper possible up to 155 $\mu$ m at straight paper path**
- **operating temperature -20 $^{\circ}$ C - +60 $^{\circ}$ C**



[Datasheet](#)



# Overview 24V, 80/82.5mm, 250mm/sSII

## Automatic Paper Load

**CAP9347E-S640-E**

Type with Cutter	Paper Path	Compatible Interface
<b>CAP9347E-S640-E</b>	straight	<b>IF9001-02U-E</b> (USB) <b>IF9001-03S-E</b> (serial)

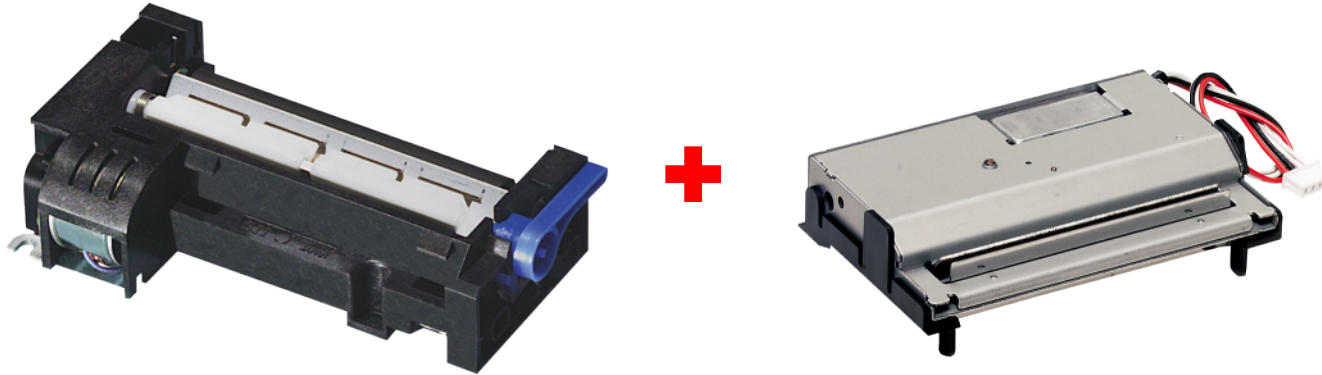
Head Connector cable for connection Interface - mechanism : **IFC-94020A-E** (200mm) discontinued



# 24V 80mm w. Cutter

SII 

## Automatic Paper Load **LTP2342x-y576A-E**



[Overview](#)

- paper-width 80mm, print speed 75mm/s
- **thick paper and label print possible at straight paper path**
- interface and chipset available



[Datasheet](#)

# Overview 24V, 80mm, 75mm/s.



## Automatic Paper Load

### LTP2342-Series

Type	Paper Path	Compatible Interface	Applicable cutter Full & Partial	Applicable CPU
<b>LTP2342C-S576A-E</b>	straight	IF2305-01B-E (8bit parallel & serial (TTL)) IF2304-01UK-E (USB)	<b>ACU2324C-A-E</b>	PT230P01-E
<b>LTP2342D-C576A-E</b>	curved	IIF2305-01B-E (8bit parallel & serial (TTL)) IF2304-01UK-E (USB)	<b>ACU2324C-A-E</b>	PT230P01-E

Thermal Head cable 220mm Standard Connection Pin1-Pin1 CONN-CABLE-TH2000-E(1-1)

Thermal Head cable 220mm Cross Connection Pin1-Pin16 CONN-CABLE-TH2000-E(1-16)



## Paper Load Selection

Automatic Paper Load



# 24V Line-Head Printer 112mm



## Automatic Paper Load

Cutter Selection

without Cutter



# 24V Line-Head Printer 112mm w/o Cutter Automatic Paper Load



Print Speed Selection

75mm/s.



# 24V 112mm w/o Cutter

SII 

## Automatic Paper Load **LTP2442x-y832A-E**



[Overview](#)

- paper-width 112mm, print speed 75mm/s.
- **thick paper and label print possible at straight paper path**
- interface, chipset available



[Datasheet](#)

# Overview 24V, 112mm, 75mm/s.



## Automatic Paper Load

### LTP2442-Series

Type	Paper Path	Compatible Interface	Applicable CPU
<b>LTP2442D-C832A-E</b>	curved	<b>IF2305-01B-E</b> (8bit parallel & serial (TTL)) <b>IF2304-01UK-E</b> USB	<b>PT230P01-E</b>

Thermal Head cable 220mm Standard Connection Pin1-Pin1: [CONN-CABLE-TH2000-E\(1-1\)](#)

Thermal Head cable 220mm Cross Connection Pin1-Pin16 : [CONN-CABLE-TH2000-E\(1-16\)](#)





# 24V Line-Head Printer 58mm



## Easy Paper Load

### Cutter Selection

without Cutter

with Cutter



# 24V Line-Head Printer 58mm w/o Cutter Easy Paper Operation



Print Speed Selection

150mm/s.

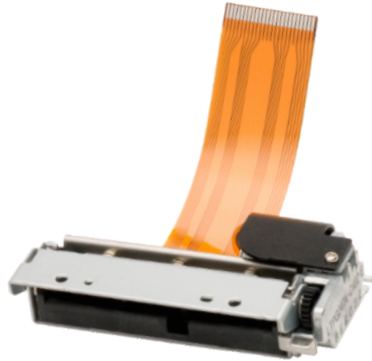
200mm/s.

220mm/s.



# 24V 58mm w/o Cutter

## Easy Paper Load **LTPG247B-C432-E**



Overview

- paper-width 58mm, print speed 150mm/s
- interface and chipset available



Datasheet

# Overview 24V, 58mm, 150mm/s.



## Easy Paper Load

### LTPG247B-C432-E

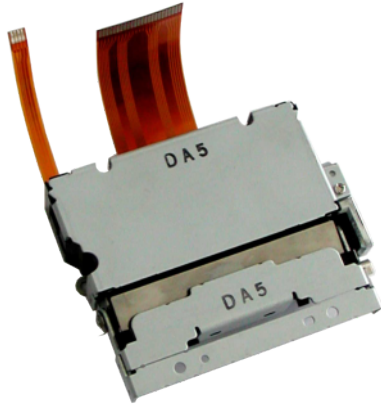
Type w. Cutter	Paper Path	Compatible Interface
LTPG247B-C432-E	EZOP	IFG001-03SK-E (serial)

Chip CPU: contact technical support.



# 24V 58mm with Cutter

## Easy Paper Load **CAPG247B-E**



[Overview](#)

- paper-width 58mm, print speed 150mm/s
- interface and chipset available



[Datasheet](#)

# Overview 24V, 58mm, 150mm/s.



## Easy Paper Load with Cutter

### CAPG247B-E

Type w. Cutter	Paper Path	Compatible Interface
<b>CAPG247B-E</b>	EZOP	<b>IFG001-03SK-E</b> (serial)

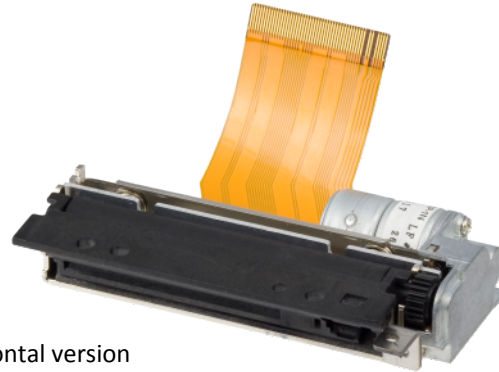
Chip CPU: contact technical support.



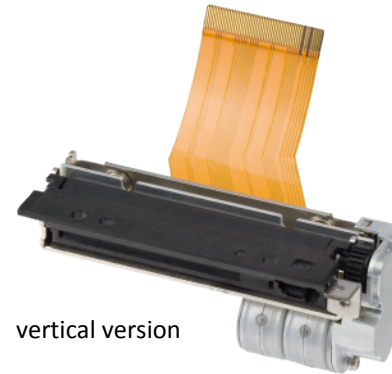
# 24V 58mm 200mm/s.

# SII

## Easy Paper Operation **LTPD247x-432-E**



horizontal version



vertical version

[Overview](#)

- paper-width 58mm, print speed 200mm/s. max.
- horizontal and vertical version available
- interface and CPU as accessories available



[Datasheet](#)

# Overview 24V, 58mm, 200mm/s.



## Easy Paper Operation

### LTPD247x-432-E

Type	Description of Details	Compatible Interface
<b>LTPD247A-432-E</b>	motor horizontal 1 sensor	<b>IFD001-01UK-E</b> (USB) <b>IFD001-01US-E</b> (serial)
<b>LTPD247B-432-E</b>	motor vertical 1 sensor	<b>IFD001-01UK-E</b> (USB) <b>IFD001-01SK-E</b> (serial)

CPU: **PTD00-P01-E**

CG ROM & Memory : **PTJCGG2-E** (also needed for function settings store and keep it after power off)

USB cable for Interface: **IFC-U01-1-E**

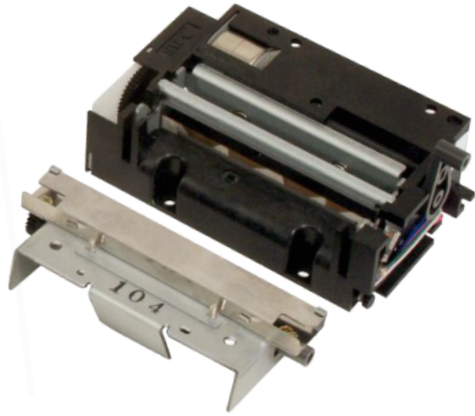




# 24V 58mm w/o Cutter

SII 

## Easy Paper Operation **LTPF247F-C432-E**



[Overview](#)

- paper-width 58mm.
- high-speed 220mm/s.
- interface available



[Datasheet](#)

# Overview 24V, 58mm, Easy Paper Operation



## LTPF247F-C432-E

Type	Print Speed	Compatible Interface
LTPF247F-C432-E	220mm/s	IFF001-02B-E *

\* Off Promotion



# 24V Line-Head Printer 58mm w. Cutter Easy Paper Operation



## Print Speed Selection

150 mm/s.

200mm/s.

300mm/s.



# 24V 58-82mm w. Cutter

SII 

## Easy Paper Operation **CAPM347 Series**



[Overview](#)

- max. printing speed: 300mm/s (standard paper)
- built-in auto cutter partial and full cut
- heavy-duty : 200km abrasion , 2Mio. Cuts (standard paper)
- **wide operating temperature : -20°C to 60°C**
- various drivers



[Datasheet](#)

# Overview 24V, 58-82mm, 300 mm/s. SII

## Easy Paper Operation

### CAPM347 Series

Type w. Cutter	Paper	Compatible Interface	Applicable Chipset
<b>CAPM347G</b>	standard paper	IFM201-01UK-E (USB) IFM201-01SK-E (Serial) discontinued	PTM20P01 (CPU) CGJG-01 (ROM)

Thermal Head cable 200mm: [IFC-M2220A-E](#)

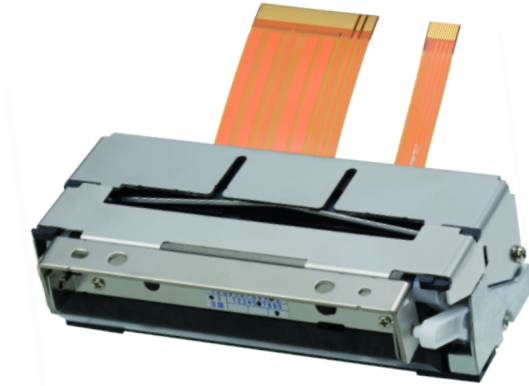
Serial cable: [IFC-S01-1-E](#)



# 24V 58mm 200mm/s.

SII 

## Easy Paper Operation **CAPD247x-E**



Overview

- paper-width 58mm
- print speed 200mm/s
- interface and CPU as accessories available
- full cut and partial cut



Datasheet

# Overview 24V, 58mm, 200mm/s.



## Easy Paper Operation

### CAPD247x-E

Type	Description of Details	Compatible Interface
<b>CAPD247D-E</b>	motor horizontal 1 sensor incl. Cutter	<b>IFD001-01UK-E</b> (USB) <b>IFD001-01SK-E</b> (serial)
<b>CAPD247E-E</b> with grounding plate	motor horizontal 1 sensor incl. cutter	<b>IFD001-01UK-E</b> (USB) <b>IFD001-01SK-E</b> (serial)

CPU: **PTD00-P01-E**

CG ROM & Memory : **PTJCGG2-E** (also needed for function settings store and keep it after power off)

USB cable for Interface: **IFC-U01-1-E**



## Easy Paper Load

### Cutter Selection

without Cutter

with Cutter





# 24V Line-Head Printer 80mm w/o Cutter Easy Paper Operation



## Print Speed Selection

100mm/s.

170mm/s. ----- 200mm/s.

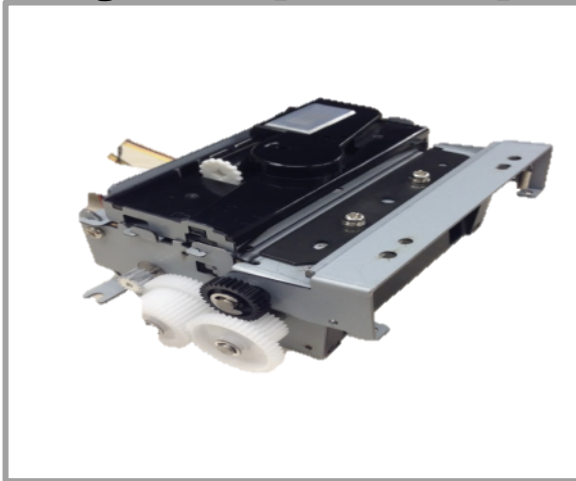
250mm/s.



# 24V 80mm 250 mm/s.

SII 

## Easy Paper Operation **LTP04-347**



[Overview](#)

- paper-width 80mm
- print speed 250mm/s. max.
- head removable without tools
- abrasion 150 km
- 2 headcontrols possible, 250mm/s. and 170 mm/s



[Datasheet](#)

# Overview 24V, 80mm, 250mm/s.



## Easy Paper Operation

### LTP04 Series

Type	Cutter model optional	Compatible Interface
<b>LTP04-347</b>	ACU04-37	No interface available

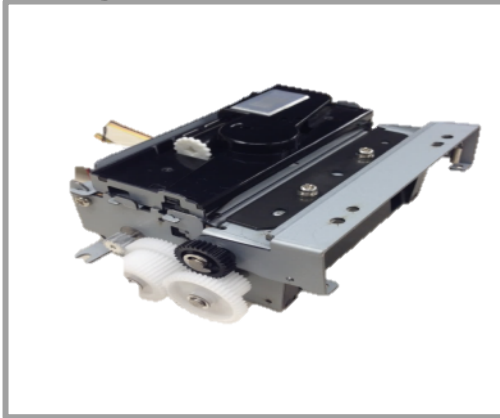
Printer mechanism and Cutter must be ordered separate. Only partial cut possible



# 24V 80mm 250 mm/s. with cutter

SII 

## Easy Paper Operation **LTP04-347 /ACU04-37**



[Overview](#)

- paper-width 80mm
- print speed 250mm/s. max.
- head removable, cutter removable, without tools
- abrasion 150 km, cutter 2 Mio. cuts
- 2 headcontrols possible, 250mm/s. and 170 mm/s
- partial cut only



[Datasheet](#)

# Overview 24V, 80mm, 250mm/s.



## Easy Paper Operation

### LTP04 Series

Type	Cutter model	Compatible Interface
<b>LTP04 -347-D4</b>	<b>ACU04-37-A2</b> <b>Screw for ACU04</b> (must be ordered)	No interface available

Printer mechanism, Cutter and Screw must be ordered separate



# 24V 80mm 170-200 mm/s.

SII 

## Easy Paper Operation **LTPD347x-576-E**



[Overview](#)

- paper-width 80mm
- print speed 200mm/s. max.
- horizontal and vertical version available
- interface and CPU as accessories available



[Datasheet](#)

# Overview 24V, 80mm, 200mm/s.



## Easy Paper Operation

### LTPD347x-576-E Series

Type	Description of Details	Compatible Interface
<b>LTPD347A-576-E</b>	motor horizontal 1 sensor	IFD001-01UK-E (USB) IFD001-01SK-E (serial)
<b>LTPD347B-576-E</b>	motor vertical 1 sensor	IFD001-01UK-E (USB) IFD001-01SK-E (serial)

CPU: **PTD00-P01-E**

CG ROM & Memory : **PTJCGG2-E** (also needed for function settings store and keep it after power off)

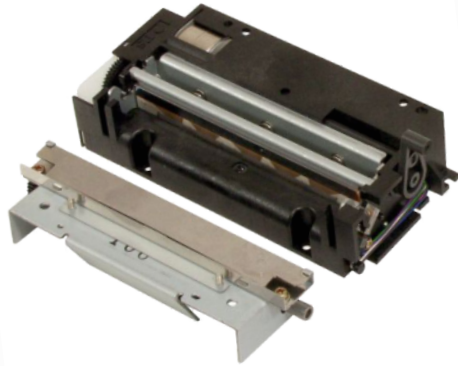
USB cable for Interface: **IFC-U01-1-E**



# 24V 80mm w/o Cutter

SII 

## Easy Paper Operation **LTPF347x-C576-E Series**



Off Promotion

[Overview](#)

- paper-width 80mm
- print speed 100mm/s.



[Datasheet](#)



# Overview 24V, 80mm, 100/220mm/s.SII

## Easy Paper Operation

**LTPF347E-C576-E**

Type	Print Speed
LTPF347E-C576-E *	100mm/s.

\* Off Promotion



# 24V Line-Head Printer 80/82mm w. Cutter Easy Paper Operation



Print Speed Selection

200mm/s.

250mm/s.

300mm/s.



# 24V 58-82mm w. Cutter

SII 

## Easy Paper Operation **CAPM347 Series**



Overview

- max. printing speed: 300mm/s
- built-in auto cutter, partial and full cut
- heavy-duty : 200km abrasion, 2 Mio. Cuts (standard paper)
- **wide operating temperature : -20°C to 60°C**
- various drivers



Datasheet

# Overview 24V, 58-82mm, 300mm/s. SII

## Easy Paper Operation

### CAPM347 Series

Type w. Cutter	Paper	Compatible Interface	Applicable Chipset
<b>CAPM347G</b>	standard paper	IFM201-01UK-E (USB) IFM201-01SK-E (Serial) discontinued	PTM20P01 (CPU) CGJG-01 (ROM)

Thermal Head cable 200mm: [IFC-M2220A-E](#)

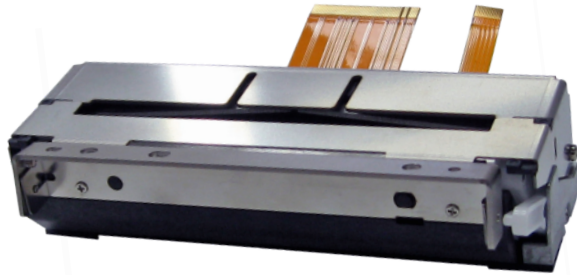
Serial cable: [IFC-S01-1-E](#)



# 24V 80mm 200mm/s.

SII 

## Easy Paper Operation CAPD347F(J)-E



Overview

- paper-width 80mm
- print speed 200mm/s. (170mm/s. from -10° to 60°C)
- interface and CPU as accessories available



Datasheet

# Overview 24V, 80mm, 200mm/s.



## Easy Paper Operation

### CAPD347F/J-E

Type	Description of Details	Compatible Interface
<b>CAPD347F-E</b>	motor horizontal 1 sensor	<b>IFD001-01UK-E</b> (USB) <b>IFD001-01SK-E</b> (serial)
<b>CAPD347J-E</b> with grounding plate	motor horizontal 1 sensor	<b>IFD001-01UK-E</b> (USB) <b>IFD001-01SK-E</b> (serial)

CPU: **PTD00-P01-E**

CG ROM & Memory : **PTJCGG2-E** (also needed for function settings store and keep it after power off)

USB cable for Interface: **IFC-U01-1-E**



## Paper width Selection

58/60mm

80 /83 mm



## Interface Selection

Serial Interface

USB Interface

Ethernet Interface





## Interface Selection

Serial Interface

USB Interface

Ethernet Interface



## Print Speed Selection

150 mm/ sec.

200 mm/sec.



## Print Speed Selection

150 mm/ sec.

200 mm/sec.



# Kiosk-Printer 58/60mm w/o Presenter SII

## Serial Interface 150mm/s. **APU-G247-A01S-E**



- paper-width 58mm
- print speed 150mm/s., power 24V
- easy paper operation
- serial interface
- paper-roll max. 83mm



# Kiosk-Printer 58/60mm w/o Presenter SII

## USB Interface 150mm/s. **APU-G247-A01U-E**



- paper-width 58mm
- print speed 150mm/s., power 24V
- easy paper operation
- USB interface
- paper-roll max. 83mm



Base modul



with Output Control



with Presenter



with Presenter & Retractor





- mark detection
- paper near end detection
- driver Windows 7/8/10
- Linux Cups Driver
- XFS Driver

Type	With paperholder	Interface	Power supply
<b>KSM347-S/U</b>	Yes (adjustable)	Serial / USB	STD-24037 Power Supply edito
<b>KSM347-S/U/E</b>	Yes (adjustable)	Serial / USB / Ethernet	STD-24037 Power Supply edito

- paper-width 58mm – 83 mm
- print speed 200mm/s., power 24V DC
- paper-roll max. 200 mm
- mounting plates on request
- paper loading left or right side

**Accessoires:**

STD-24037

MED W1 Cable edito printer

MED W2 Serial cable edito

IFC-WH-001U

power supply 90W with cables

power cable open end

Serial adapter cable RJ12 &gt; DB9

USB cable

[Brochure](#)




- paper push - stop print function
- paper pull - cut paper function
- mark detection
- paper near end detection
- paper output detection
- driver Windows 7/8/10
- Linux Cups Driver
- XFS Driver

Type	With paperholder	Interface	Power supply
<b>KSM3470-S/U</b>	Yes (adjustable)	Serial / USB	STD-24037 Power Supply edito
<b>KSM3470-S/U/E</b>	Yes (adjustable)	Serial / USB / Ethernet	STD-24037 Power Supply edito

- paper-width 58mm – 83 mm
- print speed 200mm/s., power 24V DC
- paper-roll max. 200 mm
- paper loading left or right side
- illuminated paper mouth

**Accessoires:**

STD-24037

MED W1 Cable edito printer

MED W2 Serial cable edito

IFC-WH-001U

power supply 90W with cables

power cable open end

Serial adapter cable RJ12 > DB9

USB cable



Brochure





- presenter function
- mark detection
- paper near end detection
- paper output detection
- driver Windows 7/8/10
- Linux Cups Driver
- XFS Driver

Type	With paperholder	Interface	Power supply
<b>KSM347P-S/U</b>	Yes (adjustable)	Serial / USB	STD-24037 Power Supply edito
<b>KSM347P-S/U/E</b>	Yes (adjustable)	Serial / USB / Ethernet	STD-24037 Power Supply edito

- paper-width 58mm – 83 mm
- print speed 200mm/s., power 24V DC
- paper-roll max. 200 mm
- paper loading left or right side
- illuminated paper mouth

**Accessoires:**

STD-24037

MED W1 Cable edito printer

MED W2 Serial cable edito

IFC-WH-001U

power supply 90W with cables

power cable open end

Serial adapter cable RJ12 &gt; DB9

USB cable


[Brochure](#)



- present and retract function
- hidden print function (internal print)
- mark detection
- paper near end detection
- paper output detection
- driver Windows 7/8/10
- Linux Cups Driver
- XFS Driver

Type	With paperholder	Interface	Power supply
<b>KSM347R-S/U</b>	Yes (adjustable)	Serial / USB	STD-24037 Power Supply edito
<b>KSM347R-S/U/E</b>	Yes (adjustable)	Serial / USB / Ethernet	STD-24037 Power Supply edito

- paper-width 58mm – 83 mm
- print speed 200mm/s., power 24V DC
- paper-roll max. 200 mm
- paper loading left or right side
- illuminated paper mouth

**Accessoires:**

- |                            |                                 |
|----------------------------|---------------------------------|
| STD-24037                  | power supply 90W with cables    |
| MED W1 Cable edito printer | power cable open end            |
| MED W2 Serial cable edito  | Serial adapter cable RJ12 > DB9 |
| IFC-WH-001U                | USB cable                       |



## Print Speed Selection

200mm/s

350mm/s



## Interface Selection

Serial Interface

USB Interface

Ethernet

Bluetooth



# POS Printer RP-D10 200mm/s

## Serial Interface



[Overview](#)

- **Dual usage:** Top and Front Exit in one model
- compact cube: 129x129x129mm
- 200mm/s, 100km, 1.5m cuts
- operating temperature to 45°C
- **Energy Star® qualified**

5°

[Leaflet](#)

[Datasheet](#)



# Overview POS Printer RP-D10



## 200mm/s Serial Interface

### RP-D10 Kit

Type	Paper Exit	Color
<b>RP-D10-K27J1-S KIT</b>	Dual Top/Front	black
<b>RP-D10-W27J1-S KIT</b>	Dual Top/Front	white
<b>RP-D10-K27J1-S UK KIT</b>	Dual Top/Front	black

Kit includes: AC Adaptor **PW-E2427-W1** and AC Cable **CB-CE04-20A** (EU Kit); or **CB-UK03-20A** (UK Kit)

**Optional:**

Wallmount kit **WLK-B01-1**

Specified serial cable **IFC-S02-2**

Paperroll: **MM80-80-80**

USB Interface: **RP-E10-SUB-U-A**

Ethernet Interface: **RP-E10-SUB-E-A**

Back plate white: **BCP-A01.W**; Back plate black: **BCP-A01-K**



# POS Printer RP-D10 200mm/s

## USB Interface



Overview

- **Dual usage:** Top and Front Exit in one model
- compact cube: 129x129x129mm
- 200mm/s, 100km, 1.5m cuts
- operating temperature to 45°C
- **Energy Star® qualified**

5°

Leaflet

Datasheet



# Overview POS Printer RP-D10



## 200mm/s USB Interface

### RP-D10 Kit

Type	Paper Exit	Color
<b>RP-D10-K27J1-U KIT</b>	dual Top/Front	black
<b>RP-D10-W27J1-U KIT</b>	dual Top/Front	white
<b>RP-D10-K27J1-U UK KIT</b>	dual Top/Front	black

Kit includes: AC Adaptor [PW-E2427-W1](#) and AC Cable [CB-CE04-20A](#) (EU Kit) or [CB-UK03-20A](#) (UK Kit)

#### Optional:

Wallmount kit [WLK-B01-1](#)

specified USB cable [IFC-U02-2](#)

powered USB (Y) [IFC-V01-1](#)

Paperroll: [MM-80-80-80](#)

Serial Bord: [RP-E10-SUB-S-A](#)

Ethernet Board: [RP-E10-SUB-E-A](#)

Back plate white: [BCP-A01-W](#); Back plate black: [BCP-A01-K](#)





# POS Printer RP-D10 200mm/s

## Ethernet Interface



[Overview](#)

- **Dual usage:** Top and Front Exit in one model
- compact cube: 129x129x129mm
- 200mm/s, 100km, 1.5m cuts
- operating temperature to 45°C
- **Energy Star® qualified** 5°

[Leaflet](#)

[Datasheet](#)



# Overview POS Printer RP-D10

## 200mm/s Ethernet Interface



### RP-D10 Kit

Type	Paper Exit	Color
<b>RP-D10-K27J1-E KIT</b>	dual Top/Front	black
<b>RP-D10-W27J1-E KIT</b>	dual Top/Front	white
<b>RP-D10-K27J1-E UK KIT</b>	dual Top/Front	black

Kit includes: AC Adaptor **PW-E2427-W1** and AC Cable **CB-CE04-20A** (EU Kit) or **CB-UK03-20A** (UK Kit)

#### Optional:

Wallmount kit **WLK-B01-1**

Paperroll: **MM80-80-80**

Serial Board: **RP-E10-SUB-S-A**

USB Board: **RP-E10-SUB-U-A**

Back plate white: **BCP-A01-W**; Back plate black: **BCP-A01-K**



# POS Printer RP-D10 200mm/s

## Bluetooth Interface



Overview

- **Dual usage:** Top and Front Exit in one model
  - compact cube: 129x129x129mm
  - 200mm/s, 100km, 1.5m cuts
  - operating temperature to 45°C
  - **Energy Star® qualified**
- 5°



Datasheet

# Overview POS Printer RP-D10

## 200mm/s Bluetooth Interface



### RP-D10 Kit

Type	Paper Exit	Color
<b>RP-D10-K27J2-BT KIT</b>	dual Top/Front	black
<b>RP-D10-W27J2-BT KIT</b>	dual Top/Front	white
<b>RP-D10-W27J2-BT UK KIT</b>	dual Top/Front	white
<b>RP-D10-K27J2-BT UK KIT</b>	dual Top/Front	black

Kit includes: AC Adaptor [PW-E2427-W1](#) and AC Cable [CB-CE04-20A](#) (EU Kit) or [CB-UK03-20A](#) (UK Kit)

**Optional:**

Wallmount kit [WLK-B01-1](#)

Paperroll: [MM80-80-80](#)

Back plate white: [BCP-A01-W](#); Back plate black: [BCP-A01-K](#)



## Interface Selection

Serial Interface

USB Interface

Ethernet



# POS Printer RP-E1x 350mm/s

## Serial Interface



[Kit Overview](#)

- RP-E10: Receipt top-exit
- RP-E11: Receipt front-exit
- compact cube: 129x129x129mm
- 350mm/s, 150km, 2m cuts
- large LED indicator
- **operating temperature to 45°C**
- **5°**
- near paper end sensor

[Leaflet](#)

[Datasheet](#)



# Overview POS Printer RP-E1x

## 350mm/s Serial Interface



### RP-E1x Kit

Type	Paper Exit	Color
<b>RP-E10-K3FJ1-S-C5</b>	top exit	black
<b>RP-E10-W3FJ1-S-C5</b>	top exit	white
<b>RP-E11-K3FJ1-S-C5</b>	front	black
<b>RP-E11-K3FJ1-S-C5 UK</b> (UK AC cable)	front	black
<b>RP-E11-W3FJ1-S-C5</b>	front	white

Kit includes: AC Adaptor **PW-E2427-W1** and AC Cable **CB-CE04-20A** / or **CB-UK03-20A** (UK)

**Optional:**

Wallmount kit **WLK-B01-1**

Specified serial cable **IFC-S02-2**

Paperroll: **MM80-80-80**

USB Interface: **RP-E10-SUB-U-A**

Ethernet Interface: **RP-E10-SUB-E-A**

Back plate white: **BCP-A01-W**; Back plate black: **BCP-A01-K**

Leaflet

Datasheet



# POS Printer RP-E1x 350mm/s

## USB Interface



[Kit Overview](#)

- RP-E10: Receipt top-exit
- RP-E11: Receipt front-exit
- compact cube: 129x129x129mm
- 350mm/s, 150km, 2m cuts
- large LED indicator
- **operating temperature to 45°C** **5°**
- near paper end sensor

[Leaflet](#)

[Datasheet](#)





# Overview POS Printer RP-E1x

## 350mm/s USB Interface



### RP-E1x Kit

Type	Paper Exit	Color
<a href="#">RP-E10-K3FJ1-U-C5</a>	top exit	black
<a href="#">RP-E10-W3FJ1-U-C5</a>	top exit	white
<a href="#">RP-E11-K3FJ1-U-C5</a>	front	black
<a href="#">RP-E11-K3FJ1-U-C5 UK</a> (UK AC cable)	front	black
<a href="#">RP-E11-W3FJ1-U-C5</a>	front	white

Kit includes: AC Adaptor [PW-E2427-W1](#) and AC Cable [CB-CE04-20A](#) /or [CB-UK03-20A](#) (UK)

**Optional:**

Wallmount kit [WLK-B01-1](#)

specified USB cable [IFC-U02-2](#)

Powered USB cable (Y) [IFC-V01-1](#)

Paperroll: [MM-80-80-80](#)

Serial Bord: [RP-E10-SUB-S-A](#)

Ethernet Board: [RP-E10-SUB-E-A](#)

Back plate white: [BCP-A01-W](#); Back plate black: [BCP-A01-K](#)

[Leaflet](#)

[Datasheet](#)



# POS Printer RP-E1x 350mm/s

## Ethernet Interface



[Kit Overview](#)

- RP-E10: Receipt top-exit
- RP-E11: Receipt front-exit
- compact cube: 129x129x129mm
- 350mm/s, 150km, 2m cuts
- large LED indicator
- **operating temperature 5° to 45°C**
- near paper end sensor

[Leaflet](#)

[Datasheet](#)



# Overview POS Printer RP-E1x

## 350mm/s Ethernet Interface



### RP-E1x Kit

Type	Paper Exit	Color
<a href="#">RP-E10-K3FJ1-E-C5</a>	top exit	black
<a href="#">RP-E10-W3FJ1-E-C5</a>	top exit	white
<a href="#">RP-E11-K3FJ1-E-C5</a>	front	black
<a href="#">RP-E11-K3FJ1-E-C5 UK</a> (UK AC cable)	front	black
<a href="#">RP-E11-W3FJ1-E-C5</a>	front	white

Kit includes: AC Adaptor [PW-E2427-W1](#) and AC Cable [CB-CE04-20A](#) / or [CB-UK03-20A](#) (UK)

**Optional:**

Wallmount kit [WLK-B01-1](#)

Paperroll: [MM80-80-80](#)

Serial Board: [RP-E10-SUB-S-A](#)

USB Board: [RP-E10-SUB-U-A](#)

Back plate white: [BCP-A01-W](#); Back plate black: [BCP-A01-K](#)

[Leaflet](#)

[Datasheet](#)



## Resolution Selection

203 dpi

300 dpi



# SLP620



Driver:  
Server 2003  
Windows 7, 8, 8.1 and 10  
MacOS 10.6 or later

- Resolution 203 dpi
- USB Interface
- Printspeed 70 mm/sec.
- 6V
- Print Barcodes Graphic and Text
- Smart Label Software included.



Accessoire:Tray



## Interface Selection

USB 12V

USB + Serial 12V



# SLP650



Driver:  
Server 2003  
Windows 7, 8, 8.1 and 10  
MacOS 10.6 or later

- Resolution 300 dpi
- USB Interface
- Printspeed 70 mm/sec.
- 12V
- Print Barcodes Graphic and Text
- Smart Label Software included.



Accessoire:Tray



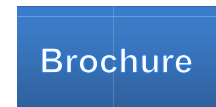


Driver:  
Server 2003  
Windows 7, 8, 8.1 and 10  
MacOS 10.6 or later

- Resolution 300 dpi
- USB Interface + Serial Interfac
- Printspeed 100 mm/sec.
- 12V
- Print Barcodes Graphic and Text
- Smart Label Software included.



Accessoire:Tray





# THANK YOU FOR YOUR ATTENTION!



SII 

**SEIKO**  
SEIKO HOLDINGS GROUP

Homepage SIG



Seiko Instruments GmbH

Siemensstraße 9, 63263 Neu-Isenburg, Germany  
Tel.: +49-6102-297-100, Fax: +49-6102-297-50-100  
info@Seiko-Instruments.de  
www.seiko-instruments.de



Catalog-  
download

