



# Product Catalog

---

**Megapixel IP** Camera Solutions

A decorative grey swoosh graphic that starts as a thin line on the left and curves upwards and to the right, ending as a thicker line on the right side of the page.

# About Arecont Vision



Arecont Vision is the leading manufacturer of high-performance megapixel IP cameras and associated software. Arecont Vision products are made in the USA and feature low-cost massively parallel image processing architectures MegaVideo® and SurroundVideo® that represent a drastic departure from traditional analog and network camera designs. All-in-one products such as the MegaDome®, MegaView™, SurroundVideo® and D4F/D4S/D4SO series provide installer friendly solutions. Compact JPEG and H.264 series of cameras address cost sensitive applications. These innovative technologies enable Arecont Vision to deliver multi-megapixel digital video at IP VGA camera price points.

Arecont Vision is leading the way in IP video with cutting edge innovations, superior performance, and the broadest selection of megapixel cameras.

# Product Lines and Vertical Markets



**SurroundVideo®  
H.264**  
8MP & 20MP  
180° and 360° D/N  
All-in-One  
Dome Cameras



**MegaDome® 2  
H.264**  
1.3 to 10MP color  
Color and D/N  
All-in-One  
Remote Focus,  
Remote Zoom  
and Auto-Iris  
Dome Cameras



**MegaDome®  
H.264**  
1.3 to 5MP color  
and D/N  
All-in-One  
Dome Cameras



**MegaVideo®  
H.264 Compact**  
1.3 to 10MP  
WDR @ 1080p & 3 MP  
Color, AI and  
D/N Cameras



**MegaVideo®  
JPEG Compact**  
1.3 to 5MP  
Color and  
D/N Cameras



**MegaVideo®  
Dual Sensor**  
**H.264 & JPEG**  
3MP/1.3MP  
Color, AI and  
D/N Cameras

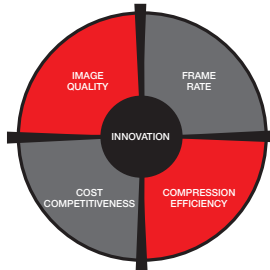


**D4F/D4S/D4SO  
H.264**  
1.3 to 5MP  
Color and D/N  
Low-Cost, All-in-One  
Indoor & Outdoor  
Dome Cameras



**MegaView™  
H.264**  
1.3 to 5MP  
D/N and D/N with  
IR illuminator  
All-in-One  
Bullet-Style Cameras

## Product Focus



## Vertical Markets



- Education
- Retail
- Municipal Surveillance
- Healthcare

- Ports
- Petrol/C-Store
- Banks/Financial
- Gaming

- Logistics
- Large Venue
- Manufacturing
- Large Enterprise

# H.264 SurroundVideo® Day/Night Series

## Product Line Summary

H.264 SurroundVideo® Day/Night Series is an all-in-one solution consisting of an 8 or 20 megapixel panoramic dual encoder (H.264 and MJPEG) camera and vandal resistant dome with 180° and 360° configurations. A SurroundVideo® camera can replace up to multiple fixed cameras of a PTZ while recording the entire panoramic field of view with ability to zoom into multiple regions of interest - a return on investment that's easily measured.



## Arecont Vision Advantages:

### All-in-One H.264 Day/Night or Color SurroundVideo® Solutions

- 8 or 20 megapixel 180° or 360° field of view
- Integrated four 2 or 5 megapixel cameras, IR corrected lenses and vandal resistant dome housing
- Day/Night or Color options
- Simultaneous support of both H.264 and MJPEG
- IP66 weatherproofing standard
- Easily adjustable 2-axis camera gimbal with 360° pan and 90° tilt
- Hard ceiling mount and surface mount with optional pendant mount and wall mount
- Heater and blower kit versions for cold climate environments

### Privacy Mask

- Multiple regions of arbitrary shape to block video

### Extended Motion Detection Grid

- 1024 distinct motion detection zones

### Binned Mode (20MP)

- Binning technique improves low light performance

### Unparalleled High Definition Resolution - 10240 x 1920

- Resolution up to 2560(H) x 1920(V) per sensor, 10240(H) x 1920(V) - (4 x 5 MP) total
- Substitute up to sixty-five analog cameras

### Fastest Megapixel Image Rates

- 3.5 fps @ 10240 x 1920
- 11 fps @ 2560 x 1920
- 13 fps @ 5120 x 960 (binned)

### Forensic Zooming

- Zoom live or after-event while recording full field of view in HD - replace PTZ devices

### Other Key Features

- -30°C ~ +50°C operating temperature
- +/- 5° electrical vertical alignment to locator sensor position (180° versions)
- +/- 10° tilt mechanical adjustment to adjust sensor angle (360° versions)

# H.264 SurroundVideo® Series Product Line at a Glance

	AV8185 Series	AV8365 Series	AV20185 Series	AV20365 Series
Sensor	Four x 2 MP, 1/2" CMOS 8 MP total	Four x 2 MP, 1/2" CMOS 8 MP total	Four x 5 MP, 1/2.5" CMOS 20 MP total	Four x 5 MP, 1/2.5" CMOS 20 MP total
Resolution	1600(H) x 1200(V) each sensor 6400(H) x 1200 (V) total	1600(H) x 1200(V) each sensor 6400(H) x 1200 (V) total	2560(H) x 1920(V) each sensor 10240(H) x 1920 (V) total	2560(H) x 1920(V) each sensor 10240(H) x 1920 (V) total
Compression	H.264 & MJPEG	H.264 & MJPEG	H.264 & MJPEG	H.264 & MJPEG
Max Frame Rate @ Max Res	6fps@6400x1200 22fps@1600x1200 88fps@800x600	6fps@6400x1200 22fps @ 1600x1200 88fps @ 800x600	3.5 fps @ 10240x1920 4.2 fps @ 10240x1600 11 fps @ 2560x1920 11 fps @ 2560x1600 13 fps @ 5120x960 (binned) 27 fps @ 1280x960 (binned)	3.5 fps @ 10240x1920 4.2 fps @ 10240x1600 11 fps @ 2560x1920 11 fps @ 2560x1600 13 fps @ 5120x960 (binned) 27 fps @ 1280x960 (binned)
Min. Illumination	0.2 Lux Color@F2.0 0 Lux, IR Sensitive D/N	0.2 Lux Color@F2.0 0 Lux, IR Sensitive D/N	Color (non-binned): 0.3 Lux Color (binned): 0.15 Lux Day/Night: 0 Lux, IR sensitive	Color (non-binned): 0.3 Lux Color (binned): 0.15 Lux Day/Night: 0 Lux, IR sensitive
Color Only Model	AV8185CO	AV8365CO	AV20185CO	AV20365CO
Day/Night Model	AV8185CODN	AV8365CODN	AV20185CODN	AV20365CODN
Heater Kit Option	'HB' Versions 11 W Htr, Separate DC12V 13 W Htr, Separate AC24V	'HB' Versions 11 W Htr, Separate DC12V 13 W Htr, Separate AC24V	'HB' Versions 11 W Htr, Separate DC12V 13 W Htr, Separate AC24V	'HB' Versions 11 W Htr, Separate DC12V 13 W Htr, Separate AC24V

# MegaDome® 2 (IR, Audio, SD Card, WDR Options) – COMING SOON

## Product Line Summary

The MegaDome® 2 series is an all-in-one solution combining megapixel resolution from 1.3 to 10MP, with remote focus, remote zoom, day/night and auto-iris capabilities. The superior resolution of MegaDome® 2 megapixel cameras along with its varying fields of view allows them to do the work of multiple conventional cameras and provide critical forensic information – all without the need and associated expense of system operators having to “catch” activities of interest as they occur.



## Arecont Vision Advantages:

### All-In-One H.264 MegaDome® 2 Solution

- Integrated megapixel camera, lens and outdoor, IP66 IK10 dome housing
- Easily adjustable 3-axis camera gimbal with 360° pan, 90° tilt and 360° z-axis
- Available in 1.3, 1080p, 3, 5 and 10MP sensor configurations with remote focus and remote zoom, day/night and auto-iris capabilities
- Remote focus, remote zoom and auto-iris
  - 1.3MP, 1080p = 3-9m F1.2
  - 3MP, 5MP = 3.6-9m F1.8
- Total PoE Solution
  - No external power requirement for heater

### Dual Encoder H.264 (MPEG-4, Part 10) and MJPEG

- H.264 provides 10x average bandwidth and storage reduction over MJPEG

### Multi-Streaming

- Up to 8 concurrent non-identical streams

### Fastest Megapixel Image Rates

- 14fps @ 5MP, 21fps @ 3MP, 32fps @ 1080p, 42fps @ 1.3MP

### Future Options

- IR
- WDR
- Audio
- SD Card

### Other Key Features

- Binning Mode on 3, 5 and 10MP
- Privacy Masking, 1024 Zone Motion Detection, CasinoMode™

	AV1255AM Series	AV2255AM Series	AV3155 Series	AV5255 Series	AV10255 Series
Sensor	1.3MP	1080p	3MP	5MP	10MP
Resolution	1280 x 1024	1920 x 1080	2048 x 1536	2592 x 1944	3648 x 2752
Compression	H.264 & MJPEG	H.264 & MJPEG	H.264 & MJPEG	H.264 & MJPEG	H.264 & MJPEG
Max Frame Rate @ Max Res	42 fps	32fps @ 1920x1080 42fps @ 1280x1024	21fps @ 2048x1536 47fps @ 1024x768 (binned)	14fps @ 2592x1944 34fps @ 1296x972(binned)	7fps @ 3648x2752 32fps @ 1920x1080(binned)
Min. Illumination	0.1 Lux	0.1 Lux	0.15 Lux 0.3 Lux Binned	0.15 Lux 0.3 Lux Binned	0.42 Lux Binned 0.21 lux
Day/Night Model	AV1255AM	AV2255AM	AV3255AM	AV5255AM	AV10255AM
PSIA	Yes	Yes	Yes	Yes	Yes
ONVIF	Soon	Soon	Soon	Soon	Soon
Heater Kit Option	"HK" Versions 2.28W Heater	"HK" Versions 2.28W Heater	"HK" Versions 2.28W Heater	"HK" Versions 2.28W Heater	"HK" Versions 2.28W Heater
Lens Options	MP Motorized Lens 3-9mm, F1.2, IR corrected	MP Motorized Lens 3-9mm, F1.2, IR corrected	MP Motorized Lens 3.6-9mm, F1.8, IR corrected	MP Motorized Lens 3.6-9mm, F1.8, IR corrected	MP Motorized Lens 4.7-9mm, F1.8, IR corrected

# H.264 MegaDome® Series

## Product Line Summary

The MegaDome® series is an all-in-one solution which includes 1.3, 2, 3 or 5 megapixel color or day/night camera, megapixel varifocal lens and vandal resistant dome enclosure. With all the advanced technology and performance of our MegaVideo® camera series, MegaDome's complete configuration makes installation easy – without any guesswork.

## Arecont Vision Advantages:

### All-In-One H.264 MegaDome® Solution

- Integrated megapixel camera, lens and IP66 dome housing
- Easily adjustable 3-axis camera gimbal with 360° pan, 90° tilt and 360° z-axis
- Available in 1.3, 2, 3 and 5MP sensor configurations with color only or Day/Night versions

### Dual Encoder H.264 (MPEG-4, Part 10) and MJPEG

- H.264 provides 10x average bandwidth and storage reduction over MJPEG

### Multi-Streaming

- Up to 8 concurrent non-identical streams

### Bit Rate Control

- Maintain desired bandwidth and storage size

### Real Time Streaming Protocol (RTSP)

- Compatible with Apple QuickTime, VLC Player, etc.

### Superior Low Light Performance

- 1/2" and 1/2.5" CMOS sensor and proprietary noise cancellation technology

### Unparalleled High-Definition Resolution

- Up to 15 times the resolution of IP VGA or analog cameras

### Fastest Megapixel Image Rates

- Full frame rates with no image quality degradation

### Other Key Features

- 4.5-10mm or 8-16mm optic package options
- Wall, pendant, flush, corner, pole and electrical box mounting options





# H.264 MegaDome® Product Line at a Glance

	AV1355 Series	AV2155 Series	AV3155 Series	AV5155 Series
Sensor	1.3MP	2MP	3MP	5MP
Resolution	1280 x 1024	1600 x 1200	2048 x 1536	2592 x 1944
Compression	H.264 & MJPEG	H.264 & MJPEG	H.264 & MJPEG	H.264 & MJPEG
Max Frame Rate @ Max Res	32 fps	24 fps	15 fps	9 fps
Min. Illumination	0.1 Lux Color 0 Lux, IR Sensitive D/N	0.1 Lux Color 0 Lux, IR Sensitive D/N	0.2 Lux Color 0 Lux, IR Sensitive D/N	0.3 Lux Color 0 Lux, IR Sensitive D/N
Color Only Model	AV1355-xxx	AV2155-xxx	AV3155-xxx	AV5155-xxx
Day/Night Model	AV1355DN-xxx	AV2155DN-xxx	AV3155DN-xxx	AV5155DN-xxx
Heater Kit Option	Yes	Yes	Yes	Yes
Lens Options	4.5 - 10 mm or 8 - 16 mm	4.5 - 10 mm or 8 - 16 mm	4.5 - 10 mm or 8 - 16 mm	4.5 - 10 mm or 8 - 16 mm

## Product Line Summary

Arecont Vision's new H.264 megapixel cameras in 1.3 to 10MP megapixel formats, were designed to address the cost-sensitive H.264 market as well as environmental housings requiring more compact camera and lens configurations. With the features of PSIA compliance, privacy masking, binning technique, extended motion detection grid and flexible cropping, the compact H.264 series is a high sensitivity, PoE (IEEE 802.3af) compliant camera with color and Day/Night configurations - ideal for installations and a cost effective solution.

## Arecont Vision Advantages:

### Compact

- Compact models are 1/2 the size and 1/3 the weight of regular cameras

### Cost Efficiency

- Comparable cost to IP VGA & analog cameras

### Dual Encoder H.264 and MJPEG

- Simultaneous support of both H.264 & MJPEG

### PSIA Compliance

- Fully Compliant with PSIA industry standards

### Privacy Mask

- Multiple regions of arbitrary shape to block video

### Extended Motion Detection Grid

- 1024 distinct motion detection zones

### Casino Mode (1080p)

- Casino Mode™ guarantees 30 fps under all conditions

### Flexible Cropping

- No restriction on any image size cropping

### Multi-Streaming

- Up to 8 concurrent non-identical streams

### Binned Mode (3, 5, 10MP)

- Binning technique improves low-light performance and sensitivity

### The Fastest Frame Rate on the Market

- 7fps @ 10MP / 14fps @ 5MP / 21fps @ 3MP
- 32 fps @1080p / 42fps @1.3MP

### Auxiliary Power

- 12-48VDC, 24VAC

### Other Key Features

- Simultaneous full field of view and Region-of-Interest (ROI)
- On-camera motion detection
- Mechanical IR Cut Filter (DN Version) and more



# H.264 MegaVideo® Compact Series Product Line at a Glance

	AV1115 Series	AV2115 Series	AV3115 Series	AV5115 Series	AV10115 Series
Sensor	1.3MP	2.07MP	3MP	5MP	10MP/1080p Dual Mode
Resolution	1280 x 1024	1920 x 1080	2048 x 1536	2592 x 1944	3648 x 2752 1920 x 1080
Compression	H.264 & MJPEG	H.264 & MJPEG	H.264 & MJPEG	H.264 & MJPEG	H.264 & MJPEG
Max Frame Rate @ Max Res	42 fps	32 fps	21 fps @ 2592 x 1944 47 fps @ 1024 x 768 (binned)	14 fps @ 2592 x 1944 34 fps @ 1286 x 972 (binned)	7fps @ 3648 x 2752 32 fps @ 1920 x 1080 (binned)
Min. Illumination	0.1 Lux Color 0 Lux, IR Sensitive D/N	0.1 Lux Color 0 Lux, IR Sensitive D/N	0.3 Lux (Non-Binned) Color 0.15 Lux (Binned) Color 0 Lux, IR sensitive D/N	0.3 Lux (Non-Binned) Color 0.15 Lux (Binned) Color 0 Lux, IR Sensitive D/N	0.42 Lux (Non-Binned) Color 0.21 Lux (Binned) Color 0 Lux, IR sensitive D/N
Color Only Model	AV1115	AV2115	AV3115	AV5115	AV10115
Day/Night Model	AV1115DN	AV2115DN	AV3115DN	AV5115DN	AV10115DN
Auto Iris Model	AV1115AI	AV2115AI	AV3115AI	AV5115AI	AV10115AI
Binned Mode	N/A	N/A	Yes	Yes	Yes
PSIA	Yes	Yes	Yes	Yes	Yes
Casino Mode™	N/A	Yes	N/A	N/A	N/A

## Product Line Summary

Arecont Vision's new Compact JPEG series of cameras in 1.3, 2, 3 or 5 megapixel formats, were designed to address cost sensitivities in the JPEG market as well as the size constraints of environmental housings. With on camera motion detection and 64 zone capability, the cameras provide custom programmable resolution, brightness, saturation, gamma, sharpness and tint. Ideal for installations in environmental housings where a lighter, more space-saving design is required, the Compact JPEG cameras function via PoE, eliminating the need for auxiliary power.



## Arecont Vision Advantages:

### Compact

- Compact models are 1/2 the size and 1/3 the weight

### Superior Low Light Performance

- 1/2" CMOS Sensors in 1.3, 2, and 3 MP
- 1/2.5" CMOS Sensors in 5MP

### Multi-Streaming

- Up to 8 concurrent non-identical streams with different frame rates, bit rates, resolutions and picture quality

### Fastest Megapixel Image Rates

- Full frame rates with no image degradation

### Forensic Zooming

- Zoom live or after event while recording full field of view in HD replace PTZ devices

### Reduced Overall System Cost

- Fewer cameras to install, less wiring, no external power (PoE only), lower NVR licensing fees

### Cost Efficiency

- Comparable cost to IP VGA & analog cameras

### Full or 1/4 Resolution

- Can be selected for either live viewing or archiving purposes

### Other Key Features

- Simultaneous full field of view and Region-of-Interest (ROI)
- Image cropping allow streaming of full density partial images
- On-camera motion detection
- Mechanical IR Cut Filter (DN Version) and more

# MJPEG MegaVideo® Compact Series Product Line at a Glance

	AV1310	AV2110	AV3110	AV5110
Sensor	1.3MP	2MP	3MP	5MP
Resolution	1280 x 1024	1600 x 1200	2048 x 1536	2592 x 1944
JPEG	Y	Y	Y	Y
Max Frame Rate @ Max Res	32 fps	24 fps	15 fps	9 fps
Min. Illumination	0.1 Lux Color 0 Lux, IR Sensitive D/N	0.1 Lux Color 0 Lux, IR Sensitive D/N	0.2 Lux Color 0 Lux, IR Sensitive D/N	0.3 Lux Color 0 Lux, IR Sensitive D/N
Color Only	AV1310	AV2110	AV3110	AV5110
Day/Night	AV1310DN	AV2110DN	AV3110DN	AV5110DN

# H.264 MegaVideo® WDR Camera - Coming Soon

## Product Line Summary

Arecont Vision's new Wide Dynamic Range (WDR) megapixel cameras provide a dynamic range of up to 100dB representing up to a 50dB improvement compared to traditional non-WDR cameras, which is equivalent to 300 times wider dynamic range. By extending dynamic range, Arecont Vision's WDR line provides the greatest amount of detail in both bright and dark areas of the picture at the same time.



### PSIA Compliance

- Fully Compliant with PSIA industry standards

### Privacy Mask

- Multiple regions of arbitrary shape to block video

### Extended Motion Detection Grid

- 1024 distinct motion detection zones

### Casino Mode™ (1080p)

- Casino Mode™ guarantees 30 fps under all conditions

### Binned Mode in 3MP Version

- Binning technique improves low light performance and sensitivity

### The Fastest Frame Rate on the Market

- AV2116xx: 32fps max
- AV3116xx: 21fps max

## Arecont Vision Advantages:

### WDR (Wide Dynamic Range)

- True WDR camera with dynamic range up to 100dB
- Available in 1080p & 3MP compact models
- Color, day/night and auto-iris options

### Dual Encoder H.264 and MJPEG

- Simultaneous support of both H.264 & MJPEG

	AV2116 Series	AV3116 Series
Sensor	1080p	3MP
Resolution	1920 x 1080	2048 x 1536
Compression	H.264 & MJPEG	H.264 & MJPEG
Max Frame Rate @ Max Res	32 fps	21 fps @ 2592 x 1944
Min. Illumination	0.1 Lux Color 0 Lux, IR Sensitive D/N	0.3 Lux (Non-Binned) Color 0.15 Lux (Binned) Color 0 Lux, IR sensitive D/N
Color Only Model	AV2116	AV3116
Day/Night Model	AV2116DN	AV3116DN
Auto Iris Model	AV2116AI	AV3116AI
Binned Mode	No	Yes
ONVIF	Soon	Soon
PSIA	Yes	Yes

## Product Line Summary

Arecont Vision pioneered the implementation of H.264 (MPEG-4, Part 10) compression in the security industry for dual sensor cameras. The MegaVideo® Dual Sensor series is available in 3MP/1.3MP resolutions. The 3MP sensor in day mode and 1.3MP (B/W) sensor in night mode provide the best quality in both day and night modes.



## Arecont Vision Advantages:

### Megapixel Dual Sensor Cameras

- Dual Sensor: 3MP in Day Mode and 1.3MP in Night Mode

### H.264 (MPEG-4, Part 10) Compression Standard (AV3135 only)

- Simultaneous support of both H.264 and MJPEG
- 10x average bandwidth and storage reduction over MJPEG

### Multi-Streaming

- Up to 8 concurrent non-identical streams with different user-selectable frame rates, bit rates, resolutions and picture quality

### Bit Rate Control

- Maintain desired bandwidth and storage size

### Real Time Streaming Protocol (RTSP)

- Allows for compatibility with media players such as Apple QuickTime, VLC Player, etc.

### Auxiliary Power

- 12-48VDC, 24VAC

### Fastest Megapixel Image Rates

- Full frame rates with no image quality degradation

### Other Key Features

- Simultaneous full field of view and Region-of-Interest (ROI)
- On-camera motion detection
- Mechanical IR Cut Filter (DN Version) and more

	AV3135	AV3130M
Sensor	3MP/1.3MP	3MP/1.3MP
Resolution	2048 x 1536/ 1280 x 1024	2048 x 1536/1280 x 1024
Compression	H.264 & MJPEG	MJPEG
Max Frame Rate @ Max Res	15 fps/32 fps	15 fps/32 fps
Min. Illumination	0.2 Lux Color 0 Lux, IR Sensitive B/W	0.2 Lux Color 0 Lux, IR Sensitive B/W
Color Only Model	N/A	N/A
Day/Night Model	Dual Sensor	Dual Sensor
Auto Iris Model	N/A	N/A
Binned Mode	N/A	N/A
PSIA	N/A	N/A

# H.264 D4F/D4S/D4SO All-in-One Dome Series



## Product Line Summary

The H.264 D4F/D4S (Indoor) and D4SO (Outdoor) Dome Series is an all-in-one solution with an integrated megapixel IP camera, 3.3-12mm IR corrected vari-focal lens and easily adjustable 2-axis gimbal. These 1.3MP, 1080p, 3MP and 5MP dome solutions are available in both color and day/night models with either surface-mount (D4S/D4SO) or in-ceiling configurations (D4F only). The D4F/D4S and D4SO deliver the highest quality megapixel imaging at very competitive price points for cost sensitive applications.

## Arecont Vision Advantages:

### All-in-One H.264 D4S and D4F Solution

- Integrated megapixel camera, 3.3-12mm vari-focal lens and 2-axis gimbal
- Available in 1.3, 3, 5MP & 1080p configurations w/ Color or Day/Night versions
- Surface mount (D4S/D4SO) indoor and outdoor configurations or in-ceiling mount (D4F) indoor configurations

### Dual Encoder H.264 and MJPEG

- Simultaneous support of both H.264 and MJPEG

### Casino Mode™ (1080p)

- Casino Mode™ guarantees 30fps under all conditions

### Fastest Frame Rate on the Market

- 14 fps @ 5MP / 21 fps @ 3MP,  
32 fps @ 1080p / 42 fps @ 1.3MP

### Binned Mode (3MP and 5MP)

- Binning technique improves low light performance and sensitivity

### Cost Efficiency

- Comparable cost to IP VGA & analog cameras

### Compact Dome

- Compact dome with easy 2-axis gimbal

### PSIA Compliance

- Fully compliant with PSIA industry standards

### Privacy Mask

- Multiple regions of arbitrary shape to block video

### Extended Motion Detection Grid

- 1024 distinct motion detection zones

### Flexible Cropping

- No restriction on any image size cropping

### Lens Option

- 3.3-12mm F1.6 IR corrected lens
- 4mm F1.8 IR corrected lens ( D4F/D4S 1.3MP and 1080p versions only)



## H.264 D4F/D4S/D4SO Product Line at a Glance

	D4F-AV1115-3312 D4F-AV1115-04 D4S-AV1115-3312 D4S-AV1115-04 D4SO-AV1115-3312	D4F-AV2115-3312 D4F-AV2115-04 D4S-AV2115-3312 D4S-AV2115-04 D4SO-AV2115-3312	D4F-AV3115-3312 D4S-AV3115-3312 D4SO-AV3115-3312	D4F-AV5115-3312 D4S-AV5115-3312 D4SO-AV5115-3312
Sensor	1.3MP	2.07MP	3MP	5MP
Resolution	1280 x 1024	1920 x 1080	2048 x 1536	2592 x 1944
Compression	H.264 & MJPEG	H.264 & MJPEG	H.264 & MJPEG	H.264 & MJPEG
Max Frame Rate @ Max Resolution	42 fps	32 fps	21 fps @ 2592 x 1944 47 fps @ 1024 x 768 ( binned)	14 fps @ 2592 x 1944 34 fps @ 1286 x 972 (binned)
Min. Illumination	0.1 Lux Color 0 Lux, IR Sensitive D/N	0.1 Lux Color 0 Lux, IR Sensitive D/N	0.3 Lux ( Non-Binned) Color 0.15 Lux (Binned) Color 0 Lux, IR Sensitive D/N	0.3 Lux (Non-Binned) Color 0.15 Lux (Binned) Color 0 Lux, IR Sensitive D/N
Color Only Model	D4F-AV1115-3312 D4S-AV1115-3312 D4SO-AV1115-3312 D4F-AV1115-04 D4S-AV1115-04	D4F-AV2115-3312 D4S-AV2115-3312 D4SO-AV2115-3312 D4F-AV2115-04 D4S-AV2115-04	D4F-AV3115-3312 D4S-AV3115-3312 D4SO-AV3115-3312	D4F-AV5115-3312 D4S-AV5115-3312 D4SO-AV5115-3312
Day/Night Model	D4F-AV1115DN-3312 D4S-AV1115DN-3312 D4SO-AV1115DN-3312 D4F-AV1115DN-04 D4S-AV1115DN-04	D4F-AV2115DN-3312 D4S-AV2115DN-3312 D4SO-AV2115DN-3312 D4F-AV2115DN-04 D4S-AV2115DN-04	D4F-AV3115DN-3312 D4S-AV3115DN-3312 D4SO-AV3115DN-3312	D4F-AV5115DN-3312 D4S-AV5115DN-3312 D4SO-AV5115DN-3312
Surface Mount Model	D4S-AV1115xx-3312 D4SO-AV1115xx-3312	D4S-AV2115xx-3312 D4SO-AV2115xx-3312	D4S-AV3115xx-3312 D4SO-AV3115xx-3312	D4S-AV5115xx-3312 D4SO-AV5115xx-3312
In-Ceiling Mount Model	D4F-AV1115-3312 D4F-AV1115DN-3312 D4F-AV1115DN-04	D4F-AV2115-3312 D4F-AV2115DN-3312 D4F-AV2115DN-04	D4F-AV3115-3312 D4F-AV3115DN-3312	D4F-AV5115-3312 D4F-AV5115DN-3312
3.3-12mm Lens Option	Yes	Yes	Yes	Yes
4mm Lens Option	Yes	Yes	-	-

# H.264 MegaView™ Series

## Product Line Summary

The MegaView™ series is an all-in-one solution integrated megapixel IP camera, 4.5-10mm IR corrected vari-focal lens, heater/blower, IR illuminator, vandal resistant bullet-style housing and easily adjustable 3-axis bracket. The MegaView™ series is available in 1.3 to 5MP megapixel configurations with Day/Night or Day/Night with IR illuminator versions. With the external lens adjustment feature, a user doesn't need to open camera for installation - plug and play.

## Arecont Vision Advantages:

### All-In-One H.264 MegaView™ Solution

- Integrated megapixel camera, 4.5-10mm IR corrected vari-focal lens, IR illuminator, heater & blower, IP66 and vandal resistant bullet-style housing and 3-axis bracket
- Available in 1.3 to 5MP sensor configurations with Day/Night or Day/Night with IR illuminator versions

### Dual Encoder H.264 and MJPEG

- Simultaneous support of both H.264 and MJPEG

### The Fastest Frame Rate on the Market

- 14fps @ 5MP, 21fps @ 3MP, 32fps@ 1080p, 42fps @ 1.3MP

### Plug and Play

- No need to open camera for installation
- All lens adjustments, including iris, zoom and focus, are external

### IR LED Configuration Exceeds the Market Standard

- 48 IR LEDs, 25 meter maximum IR distance and 45 degree IR angle

### PSIA Compliance

- Fully compliant with PSIA industry standards

### Privacy Mask

- Multiple regions of arbitrary shape to black video

### Extended Motion Detection Grid

- 1024 distinct motion detection zones

### Binned Mode (3MP and 5MP)

- Binning technique improves low light performance and sensitivity

### Casino Mode (1080p Version)

- Casino mode guarantees 30fps under all conditions

### Other Key Features

- Operating temp: -40° (-40°F) to +55°C (131°F)

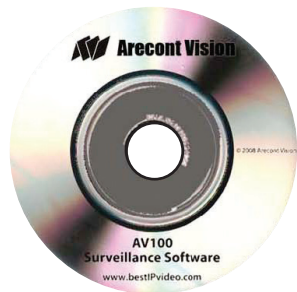


## H.264 MegaView™ Product Line at a Glance

	AV1125 Series	AV2125 Series	AV3125 Series	AV5125 Series
Sensor	1.3MP	2.07MP	3MP	5MP
Resolution	1280 x 1024	1920 x 1080	2048 x 1536	2592 x 1944
Compression	H.264 & MJPEG	H.264 & MJPEG	H.264 & MJPEG	H.264 & MJPEG
Max Frame Rate @ Max Res	42 fps	32 fps	21 fps @ 2592 x 1944 47 fps @ 1024x768 (binned)	14 fps @ 2592 x 1944 34fps @ 1286 x 972 (binned)
Min. Illumination	0.1 Lux Color 0 Lux, IR Sensitive D/N	0.1 Lux Color 0 Lux, IR Sensitive D/N	0.3 Lux (Non-Binned) Color 0.15 Lux (Binned) Color 0 Lux, IR Sensitive D/N	0.3 Lux (Non-Binned) Color 0.15 Lux (Binned) Color 0 Lux, IR Sensitive D/N
Day/Night Model	AV1125DN	AV2125DN	AV3125DN	AV5125DN
Day/Night with IR Illuminator Model	AV1125IR	AV2125IR	AV3125IR	AV5125IR
H. FOV	22° - 48°	34° - 73°	26° - 56°	33° - 71°
Binned Mode	N/A	N/A	Yes	Yes
PSIA	Yes	Yes	Yes	Yes

## Product Line Summary

Arecont Vision's AV100 testing and configuration software provides easy setup, command and control of all the features and functionality of the company's extensive megapixel IP product portfolio. Its user-friendly GUI provides camera control and configuration, plus multi-view live display and archiving.



## Arecont VISION Advantages:

### User-Friendly GUI

- Multiple view display
- Drag and drop camera tree
- Camera setup windows for image quality, camera settings, Day/Night configurations, archiving, etc.

### Flexible Video Surveillance

- Supports full motion real-time HD multi-camera viewing

### Multi-User

- Browser-based access to live and archived footage

### Post-Event Zooming

- Simultaneous viewing of full field of view and multiple zoomed images from the same camera using the multi-streaming feature of AV cameras

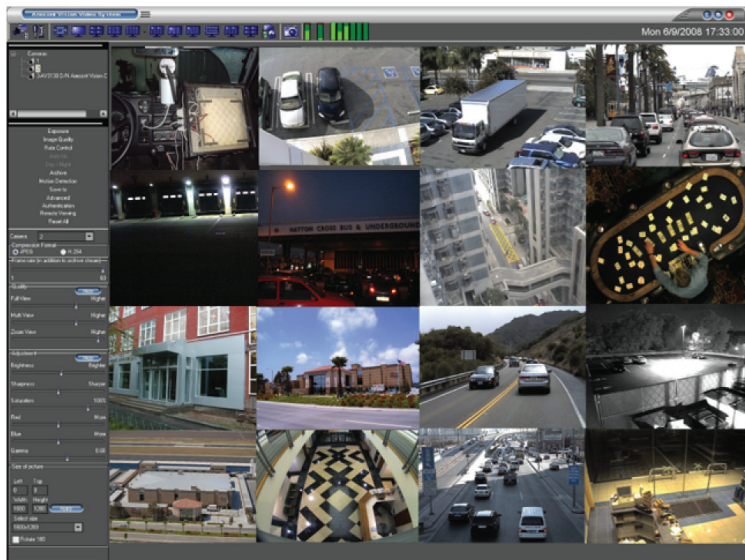
### Extra Capabilities

- Instantaneous multi-user electronic pan-tilt-zoom

### Other Key Features

- Recording over 240fps @ 1920 x 1200
- View up to 16 HD cameras at up to 30fps and more

## GUI interface



# Megapixel and High-Resolution Lenses

## Product Line Summary

Arecont Vision offers a comprehensive array of megapixel CCTV lenses, carefully selected to provide the best optical performance and megapixel imaging. Combined with Arecont Vision's high performance megapixel cameras, the lens selection enables our customers to achieve superior results in megapixel security solutions.

## Lenses

Lens4.0  
Lens6.0  
Lens8.0  
Lens12.0  
Lens4-10AI  
Lens4-13  
MPL1.55  
MPL3.5  
MPL4.0  
MPL6.0  
MPL6.2  
MPL8.0  
MPL4-10  
MPL4-12  
MPL8-16  
MPL33-12  
MPL12-40  
UHD8.0  
UHD16.0  
UHD25.0  
UHD35.0

## Arecont Vision Advantages:

### A Wide Variety of Megapixel Rated Lenses

- Varifocal and fixed focal lenses to accommodate multi-megapixel resolution cameras in diverse environments

### Superior Light Performance

- IR corrected for day or night conditions

### Wide Range of Optical Solutions

- From 1.3mm to 50mm horizontal field of view

### Other Key Features

- Available with Auto-Iris
- C and CS mount options
- Indoor/Outdoor solutions



# Megapixel and High-Resolution Lenses at a Glance

	LENS 4.0	LENS 6.0	LENS 8.0	LENS 12.0	LENS 4-10AI	LENS 4-13	MPL 1.55	MPL 3.5	MPL 4.0	MPL 6.0	MPL 6.2	MPL 8.0	MPL 4-10	MPL 4-12	MPL 8-16	MPL 33-12	MPL 12 - 40	UHD 8.0	UHD 16.0	UHD 25.0	UHD 35.0	
Focal Length (mm)	4	6	8	12	4-10	4-13	1.55	3.5	4	6	6.2	8	4.5-10	4-12	8-16	3.3 - 12	12 - 40	8	16	25	12	
Format	1/2"	1/2"	1/2"	1/2"	1/2"	1/2"	1/2"	1/2.5"	1/1.8"	1/2"	1/2.5"	1/1.8"	1/2"	1/2"	1/2"	1/2.5"	1/2"	1/1.8"	1/1.8"	2/3"	2/3"	
F-Stop	2.0	2.0	2.0	2.0	1.8	1.8	1.8	1.8	1.8	1.4	1.4	1.8	1.6	1.4	1.6	1.6	1.8	1.4	1.4	1.4	1.4	
Mount	CS	CS	CS	CS	CS	CS	CS	CS	CS	CS	CS	CS	CS	CS	CS	CS	CS	C	C	C	C	
DC Auto Iris	No	No	No	No	Yes	No	No	No	No	No	No	No	No	No	No	No	No	No	No	No	No	No
Wide	90°	64.5°	45°	30°	94.8°	90.3°	185°	47°	96°	60°	60°	96°	85°	90°	47°	95°	26°	45°	22.8°	14.6°	10.5°	
Tele	-	-	-	-	37.3°	31.2°	-	-	-	-	-	-	39°	36°	24°	32°	9°	-	-	-	-	
IR Corrected	No	No	No	No	No	Yes	Yes	Yes	Yes	No	No	Yes	Yes	Yes	Yes	Yes	Yes	No	No	No	No	
Fixed Varifocal	Fixed	Fixed	Fixed	Fixed	Vari-focal	Vari-focal	Fixed	Fixed	Fixed	Fixed	Fixed	Fixed	Vari-focal	Vari-focal	Vari-focal	Vari-focal	Vari-focal	Fixed	Fixed	Fixed	Fixed	
Manual Iris	No	No	No	No	Yes	Yes	No	No	No	Yes	Yes	No	Yes	Yes	Yes	Yes	Yes	No	No	No	No	

\*Note: In addition to the lenses in the above table, Arecont Vision has a supplemental list of recommended lenses.

## Product Line Summary

Arecont Vision's domes, housings and accessories are essential components for diverse indoor and outdoor applications. Combining dome enclosures and housings with the superior imaging of Arecont Vision cameras provides the ideal solution for special environments – where cameras are well protected from the elements. Arecont Vision's line of housings and accessories are designed for the MegaDome, MegaVideo®, MegaView™ and SurroundVideo® series of cameras.

### **Arecont Vision Advantages:**

#### **Superior Solution for Various Environments**

- Indoor or outdoor applications

#### **Excellent Enclosure Protection**

- Heavy duty enclosures feature an IP66 rating for applications in harsh environments

#### **Compatibility**

- Designed to house MegaDome®, MegaVideo®, MegaView™ and SurroundVideo® products

#### **Easy Installation**

- Easy installation and superior design, perfect for indoor or outdoor applications



## MegaDome®/MegaDome® 2/D4SO

MD-WMT2  
Wall Mount  
(1.5NPT Standard)



Focus Tool



MD-CMT  
Pendant Mount



MD-FMA  
Flush Mount  
Adaptor



MD-PMA  
Pole Mount Adaptor



SV-JBA  
Junction Box  
Adaptor



MD-CRMA  
Corner Mount Adaptor



SV-EBA  
Electrical Box  
Adaptor



Heater Kit



## SurroundVideo®

SV-WMT  
Wall Mount  
(1.5NPT Standard)



MD-CRMA  
Corner Mount  
Adaptor



SV-CMT:  
Pendant Mount  
(1.5NPT Standard)



MD-FMA  
Flush Mount  
Adaptor



MD-PMA  
Pole Mount  
Adaptor



SV-EBA  
Electrical Box  
Adaptor



SV-JBA  
Junction Box  
Adaptor



## MegaView™

MD-CRMA  
Corner Mount  
Adaptor



MD-PMA  
Pole Mount  
Adaptor



SV-EBA  
Electrical Box  
Adaptor



## MegaVideo®

Dome 4  
4 Inch  
Vandal Dome



D4S  
Indoor Surface  
Mount Dome



Dome 5  
5 Inch  
Recessed Dome



D4F  
In-Ceiling Flush Mount  
Dome



HSG1-O-W  
Environmental  
Enclosure



HSG2-O-W  
Environmental  
Enclosure



# Training, Support and Contact Information

---

## Product Training

---

For product training information and Partner Program Overview, please go to:  
<http://www.arecontvision.com/partners/partners>

## Product Support

---

For product support information, please go to:  
<http://www.arecontvision.com/resources.php>

## Arecont Vision

425 East Colorado Street,  
7th Floor  
Glendale, CA 91205

Phone: **818.937.0700**

Fax: **818.937.0464**

**<http://www.arecontvision.com>**

**[avsales@arecontvision.com](mailto:avsales@arecontvision.com)**

Order Status, Product Availability:

+1.818.937.0700 ext 459 (Western US and Canada)

+1.818.937.0700 ext 402 (Central US)

+1.818.937.0700 ext 489 (Eastern US and Canada)

+1.818.937.0483 (Europe)

+1.818.937.0700 ext 407 (Asia Pacific)

+1.818.937.0700 ext 402 (Middle East & Africa)

+1.818.937.0700 ext 402 (Latin America)

Billing Questions: +1.818.937.0497

RMA, Repair Status, Advanced Replacement:

+1.818.937.0482

## Global Team

### North America:

avsales@arecontvision.com

### Latin America:

latam.sales@arecontvision.com

### Asia Pacific:

apac.sales@arecontvision.com

### Australia / New Zealand:

anz.sales@arecontvision.com

### China:

china.sales@arecontvision.com

### Malaysia, Indonesia, Vietnam, Philippines, Singapore, Thailand:

seasia.sales@arecontvision.com

### Taiwan, Korea, Japan, Hong Kong, Mongolia:

eastasia.sales@arecontvision.com

### Europe:

europe.sales@arecontvision.com

### Belgium, Netherlands, Luxemburg:

benelux.sales@arecontvision.com

### Denmark, Finland, Iceland, Norway, Sweden:

nordic.sales@arecontvision.com

### Eastern Europe:

easterneurope.sales@arecontvision.com

### France:

france.sales@arecontvision.com

### Germany, Austria, Switzerland:

dach.sales@arecontvision.com

### Italy:

italy.sales@arecontvision.com

### Russia:

russia.sales@arecontvision.com

### Spain and Portugal:

iberia.sales@arecontvision.com

### United Kingdom

uk.sales@arecontvision.com

### Middle East / Africa:

#### Israel:

israel.sales@arecontvision.com

#### Middle East / North Africa:

mena.sales@arecontvision.com

#### Central & South Africa:

africa.sales@arecontvision.com



Edificio Antalia  
Albasanz, 16  
28037 MADRID  
Tel. 91 567 97 00  
Fax: 91 570 26 61

[www.alavaingenieros.com](http://www.alavaingenieros.com)

Torre Mapfre-Vila Olímpica  
Marina, 16 - Planta 11-C2  
08005 BARCELONA  
Tel. 93 459 42 50  
Fax: 93 459 42 62

[alava@alava-ing.es](mailto:alava@alava-ing.es)

