

ELECTRICITY MONITOR SYSTEM

WIRELESS

MTP 3100

ELECTRICITY CONSUMPTION MONITOR



FC IC ETL CE

Measures / Displays :

- | | |
|----------------------------|-----------------------|
| • Instant energy (kW) | • Energy tendency |
| • Energy consumption (kWh) | • Ambient temperature |
| • Total cost (\$ value) | • Relative humidity |
| • Pollution (Kg CO2) | • Time/ date |
| • Averages | • Battery status |

Tariff Rates : Two tariff setting modes

- Time of Use (TOU) tariff
- Normal Meter Pricing (NMP)

History : Retrieve past information directly from the monitor

Alarm setting : For max. energy consumption

Monitor :

- Backlight
- Power source : batteries & power supply

Transmitter :

- Works on a single to **three phase system (3rd clamp sold separately)**
- Transmission distance : 30 to 80 meters
- All clamps are removable from transmitter
- Clamp : 18mm dia., suitable for installation on a standard 200A panel
- Power source: batteries x02 'C' batteries included
- Works on systems 90V to 600

Software : Software included

INCLUDED ACCESSORIES:

- Monitor, transmitter
- x02 clamps 200A/18mm
- RJ45-USB data cable
- power supply
- manual
- software
- x02 C batteries

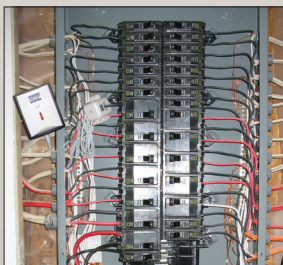


OPTIONAL ACCESSORIES:

- | | | |
|--|---|---|
|  |  |  |
| *MT3100-CL18MM
200A/18mm clamp | *MT3100-T25MM
200A/25mm clamp with transmitter | *MT3100-CL25MM
200A/25mm clamp |



Installation on a standard 200A panel (for total house consumption)



Determine consumption on a circuit of an electrical panel