



# SYNACTIVE

## Improve Quality of SAP Master Data With A Simpler Interface

Marcus Mullins – Sr. Resource Business Specialist, Tyson Foods, Inc.

DeeDee Kato – Director of Marketing, Synactive, Inc.



# LEARNING POINTS

- Tyson Foods Introduction and Overview
  - Tyson Foods Fleet Maintenance Business Process
  - SAP “Out-Of-Box” User Experience
  - New GuiXT Streamlined Business Process
  - GuiXT Streamlined and Simplified UI
  - Return on Investment
  - Best Practices
  - Summary
- How Synactive Can Help
  - Synactive Product Overview
  - Case Studies
- Q&A

# Introduction and Overview

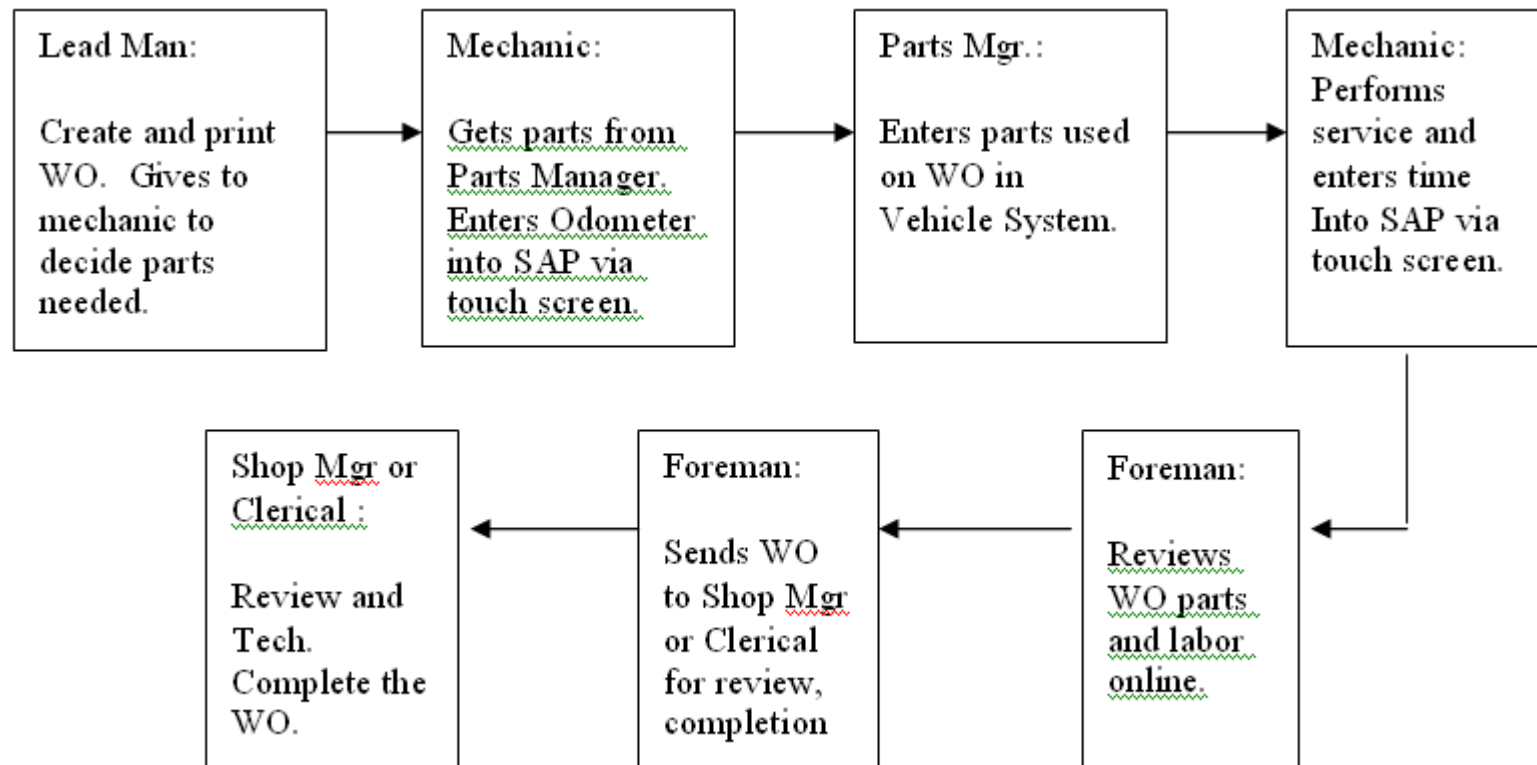
Tyson Foods, Inc. (NYSE: TSN), founded in 1935 with headquarters in Springdale, Arkansas, is one of the world's largest processors and marketers of chicken, beef and pork, the second-largest food production company in the Fortune 500 and a member of the S&P 500.

## Challenges

- *Vehicle work orders are time consuming and confusing for mechanics*
- *Poor training results in poor data quality being submitted*
- *Vehicle repairs are delayed causing delayed shipments to customers*

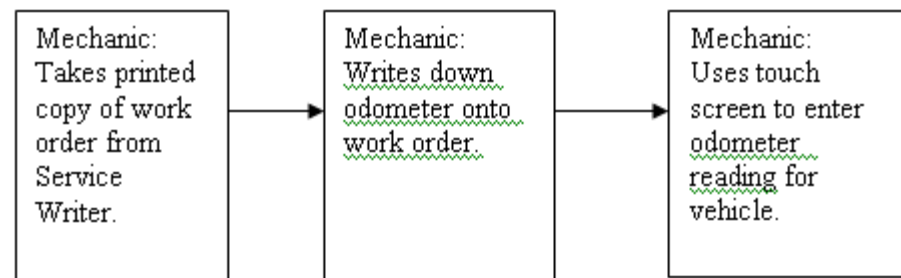


# Vehicle Repair Process

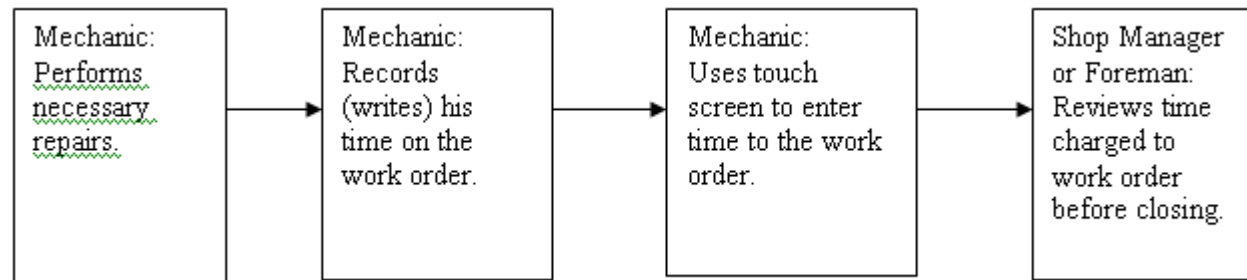




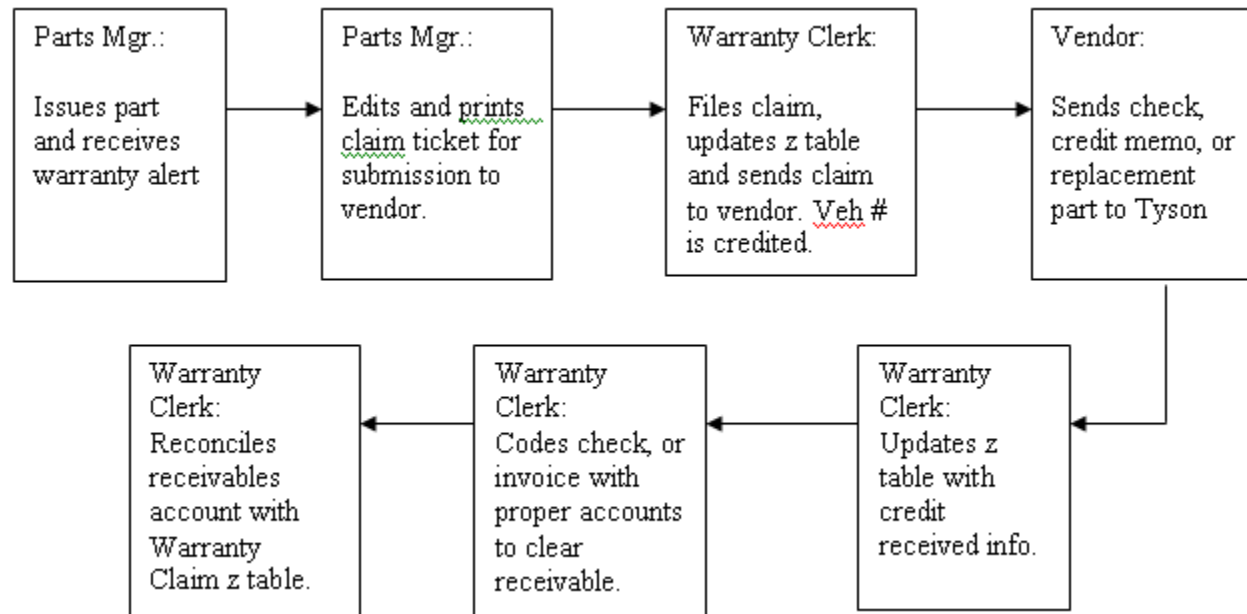
# Odometer Entry Process



# Labor Entry Process



# Warranty Process



# Out-Of-Box SAP User Experience

- Not really “User Friendly”
- Different views are required for different roles
- Shop Managers, Parts Managers, etc take time to understand the complex SAP screens and why they are inputting data
- Errors were being entered in because there were too many fields and options
- Categorizing free text was difficult compared to dropdown lists or radio buttons



# **Fleet Maintenance**

## **Case Study: Global Food Processing Company**

### **Processes optimized:**

<b>IW37</b>	<b>List Work Orders</b>
<b>IW21</b>	<b>Create PM Notification</b>
<b>IW22</b>	<b>Change PM Notification</b>
<b>IW31</b>	<b>Create Order Create Order</b>
<b>IW32</b>	<b>Change Order</b>
<b>ME21N</b>	<b>Create Purchase Order</b>
<b>MIGO</b>	<b>Goods Issue</b>
<b>IW41</b>	<b>Create Confirmation</b>
<b>IW44</b>	<b>Overall Completion Confirmation</b>

# Approach to Solving Business Needs

- Needed the ability to enter Notifications, work orders, issuance of parts, labor odometer readings, and time confirmation, all on the same screen with different interfaces based on different roles in the Fleet Department.
- Also needed parts warranty alerts prior to expiration.
- Needed an easier way to insure equipment was receiving the proper PM's at the proper time.
- Ability to Enter Wash Tickets

# Streamlined, Simplified GuiXT screens

Selections Edit Goto System Help

SAP

**Fleet Maintenance Supervisor Main Screen**

Clear All Fields SAP EasyAccess

**Create Work Order**

Odometer Cost Center  Latest Reading

Review PM Vehicle Number

Create WO Odometer

Order Type

Plant

**List of Orders / Notifications**

☐ Outstanding ☐ In Process ☐ Completed

Order Vehicle Number

Plant

Order Type

Start Date 05/18/2005

End Date 06/17/2005

Notif Notification Type

**Change Work Order**

Superior/Sub Order

Change Catalogs Print Summary

**Enter Materials**

Enter Issue Date 06/17/2005

Work Order

Plant

Stor. Loc.

**Enter Labor**

Enter Work Order  Reverse

Personnel No.

List Time Work End Date 06/17/2005

**Enter Wash Tickets**

Wash Date 06/17/2005

Act Type

Plant

Personnel No.

**Create Requisition**

Create Plant

Storage Location

Purchasing Group

Vendor

**Call PMs**

PM Type ☒

Call PM

ZWOMASTER sapdr5 INS

Start Inboxes - Microsoft Ou... Information Systems... SAP Logon Pad 640 Synactive GuiXT Fleet Maintenance S... 11:33 AM

# RETURN ON INVESTMENT

- With complete visibility of the entire fleets PM schedule Tyson was able to manage PM's more effectively, decreasing breakdowns and increasing miles run.
- The warranty process alone returned \$4.3 Million over last 6 years.
- Over \$75,000 saving in Decommissioning the Vehicle Legacy System.

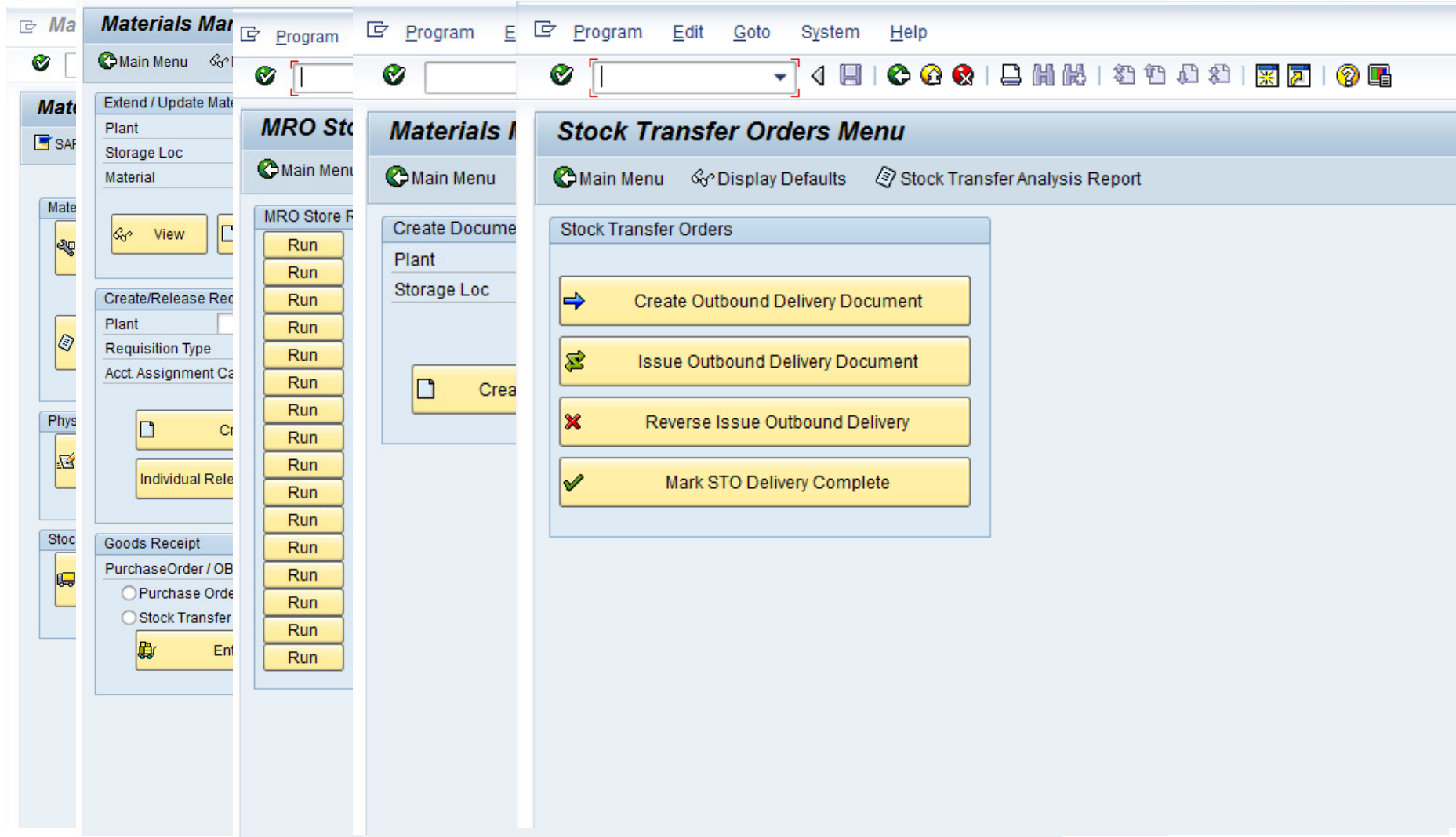


# Expanded Usage for Plant Maintenance and Materials Management


- After the great results and user acceptance of the Fleet Guixt screens it was decided to expand the footprint and create similar cockpits for Plant Maintenance and Materials Management
  - Cockpits were created for the maintenance planners, supervisors, and mechanics.
  - Along with a Cockpit for the store room personal to perform their daily tasks all from one screen.

# Streamlined, Simplified GuiXT screens

# Streamlined, Simplified GuiXT screens



# BEST PRACTICES

- Standardize anywhere you can. SAP's ability to execute tasks and reports in a variety of different ways and transactions (which is good for a super user) can be frustrating to a daily user.
  - Standard Variants  Standard Variants
- Drive Best Practices using the system not the user, take the guess work out. Users with options have the option to make more mistakes.



# Summary

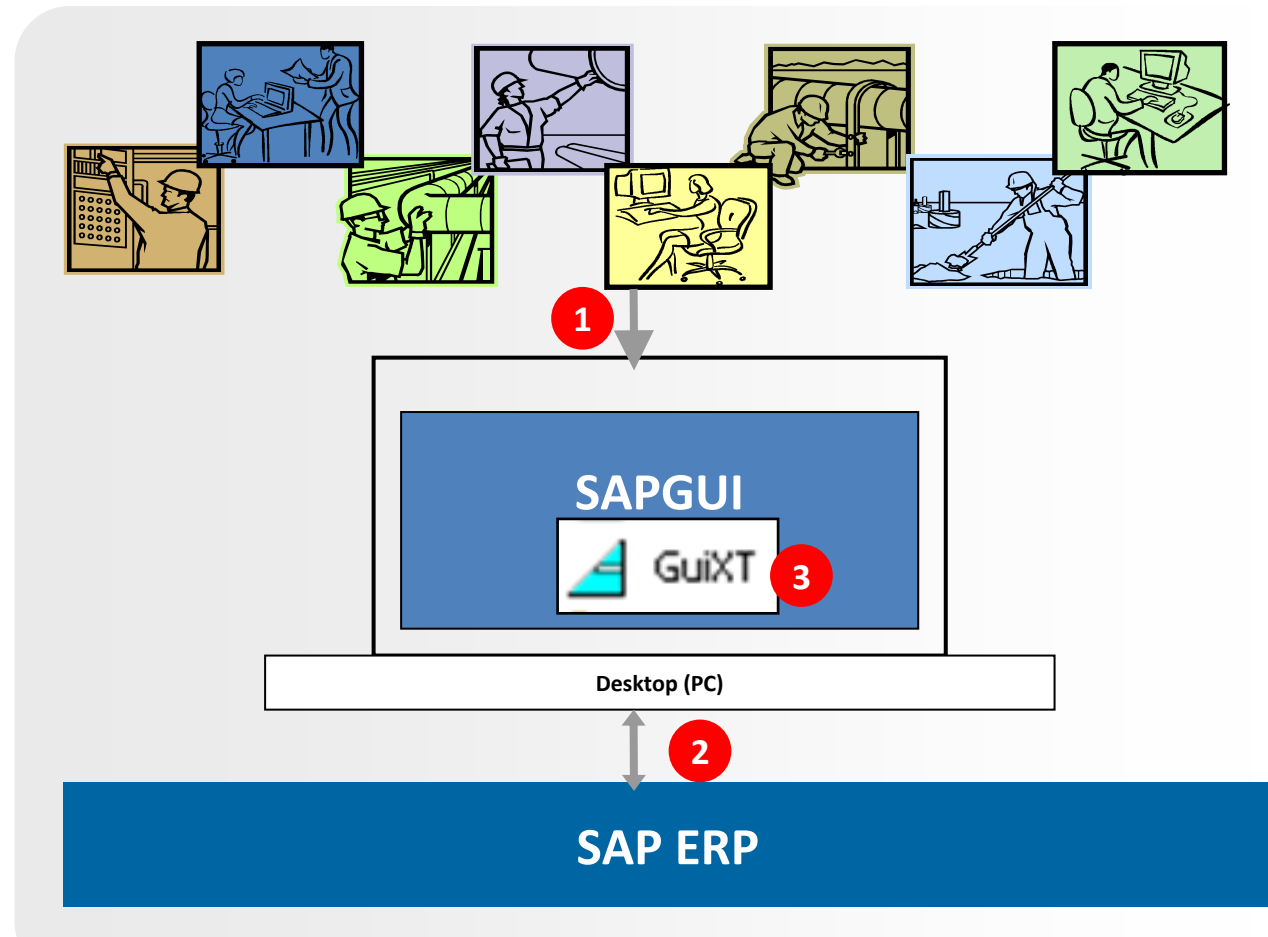
- Simple is always better
- Listen to your users
- Standardize using variants
- Don't hold GuiXT back – think outside the box

# LEARNING POINTS

- Tyson Foods Introduction and Overview
  - Tyson Foods Fleet Maintenance Business Process
  - SAP “Out-Of-Box” User Experience
  - New GuiXT Streamlined Business Process
  - GuiXT Streamlined and Simplified UI
  - Return on Investment
  - Best Practices
  - Summary
- How Synactive Can Help
  - Synactive Overview
  - Case Studies
- Q&A

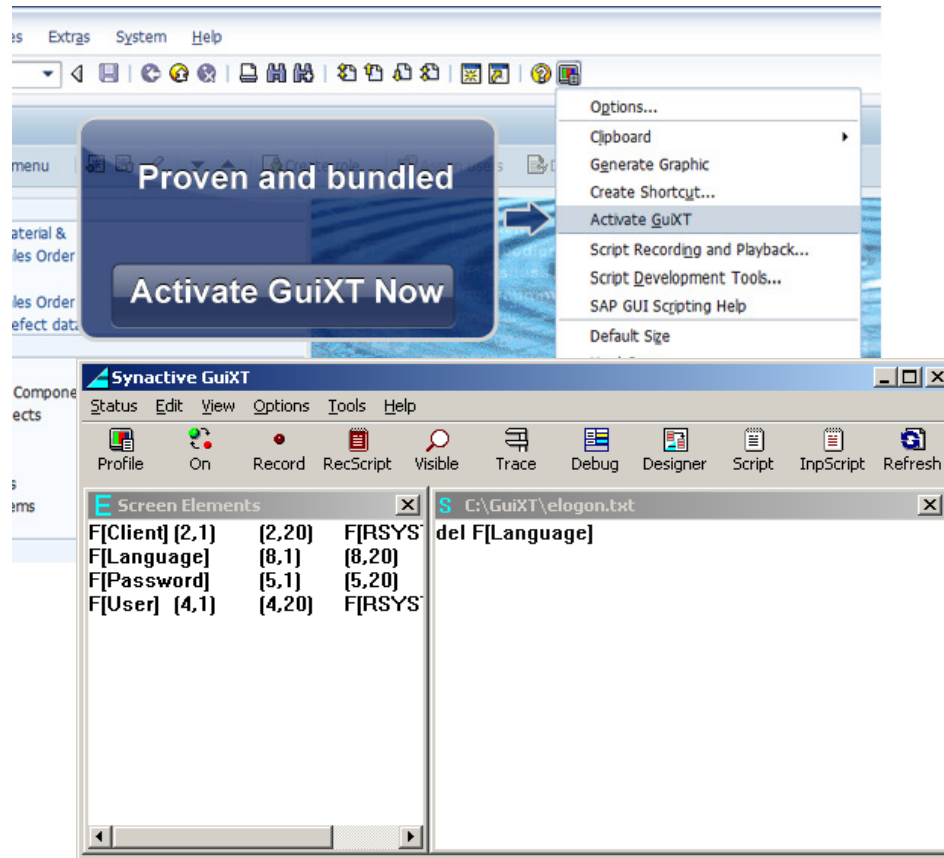
# How Does GuiXT Work?

1. User makes a request via SAPGUI (e.g. VA01)
2. SAP responds with VA01 screen
3. GuiXT screen modifications are applied and SAPGUI draws new screen for VA01



Use GuiXT Developer Toolkit to generate GuiXT screens

# What is GuiXT?



- GuiXT is the core engine integrated with SAP ERP (SAP GUI) for screen customizations
- GuiXT enables screen changes through creation of scripts using **GuiXT proprietary scripting language**
- **Single screen changes only**, no multi-screen aggregation
- Limited extensions (**e.g. no smartphone/tablet or PDF/Excel integration, etc.**)



# What is Liquid UI?

Connects directly to SAP through patented connectivity technology

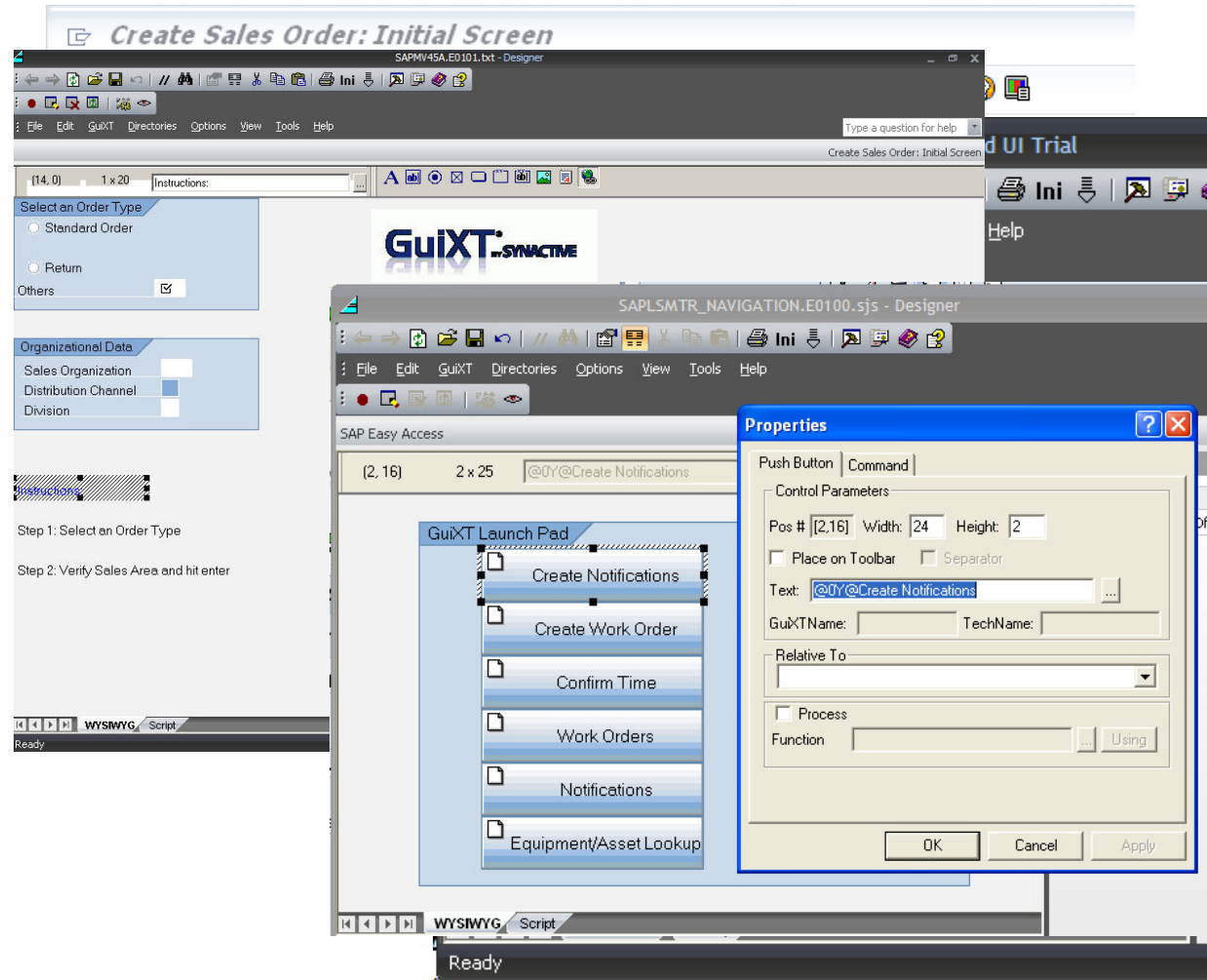
- Built on **proven** GuiXT technology
- **Extends** your SAP across both desktop and mobile devices
- **Collapse and aggregate** screens, tabs, and transactions
- **Start from SAP, Record Once and Deploy everywhere**
- **No Java, ABAP** programming; no **3rd party application server** required
- **Native** connectivity for iOS
- Continue SAP usage **without network** connectivity
- Enhanced JavaScript to empower a **responsive IT team**



Lean, Agile, Non-Disruptive Business Solution

# Designer

- WYSIWYG editor using Drag and Drop automation
- Generates GuiXT WS scripts
- Design screen layouts to be used with Liquid UI Desktop, Mobile, iOS, etc.
- Eliminates the need to know controls names, select control flow
- Preserves hand written script changes



# Workbench

## Record And Deploy To All Touch Points



# Extending SAP to Smartphone/Tablets

The image displays a collection of mobile devices and a laptop, all running SAP mobile applications. The devices include two iPads, two iPhones, a BlackBerry, and a Windows 8 laptop. The applications shown are for various SAP transactions, including 'Purchase Requisition', 'Release Code List', and 'View Orders'. The background features a blue geometric pattern.

**iOS**

**Android**

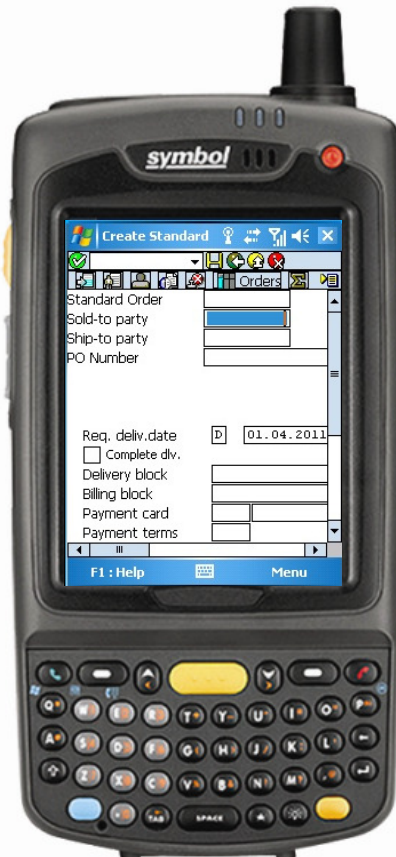
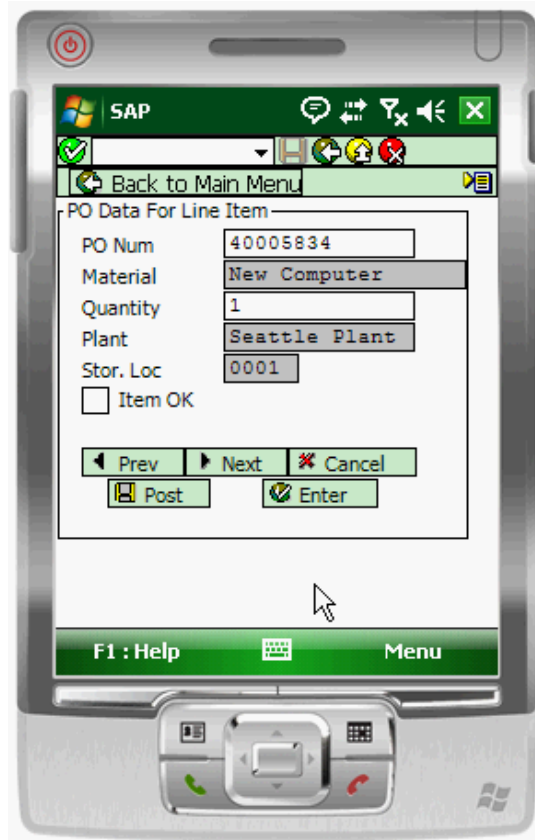
**BlackBerry**

**Windows 8**

**© 2013 Synactive, Inc.**



# Extending SAP to Windows Handheld Barcode/RFID Scanners



# Liquid UI for Offline

## Challenges:

- No access to SAP for field workers
- Redundant data entry
- Inaccurate and incomplete data
- No system snapshot resulting in decreased productivity

## Solution:

- Allows users to continue working with or without network connectivity
- “Native look and feel of SAP!”
- Integrated / scalable database
- Patented Technology



Laptops

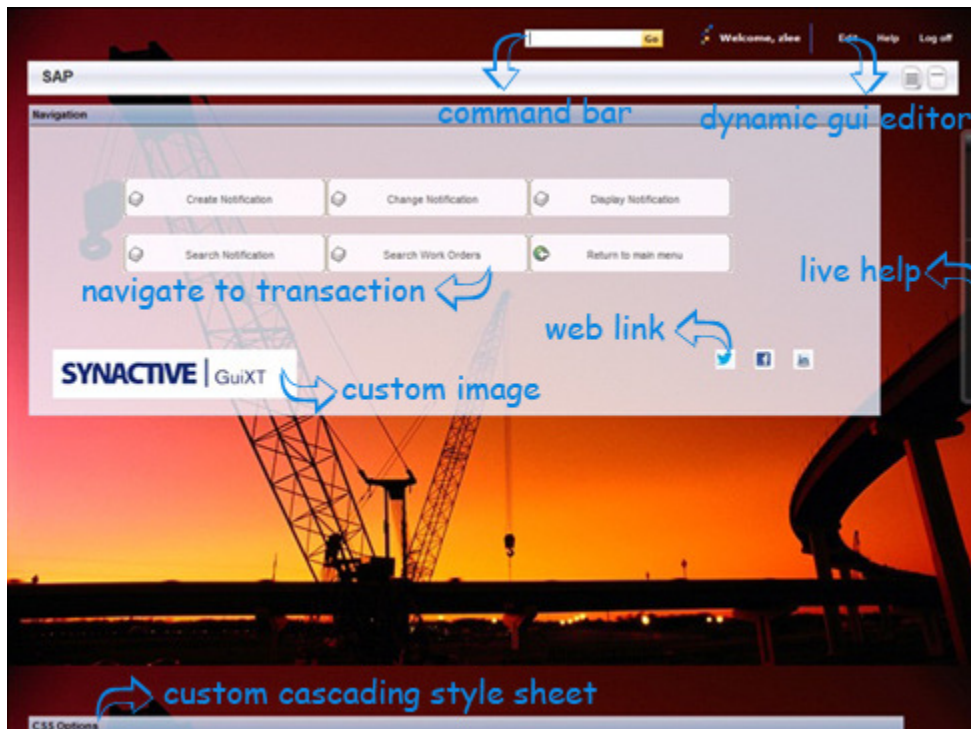


Windows  
Mobile Barcode  
Scanners



# Liquid UI for Web Browsers

- Web based delivering simplified SAP processes and transactions
- Uses CSS for a fully modernized, customized look (add customer logo)
- Zero footprint delivery of simplified SAP transactions



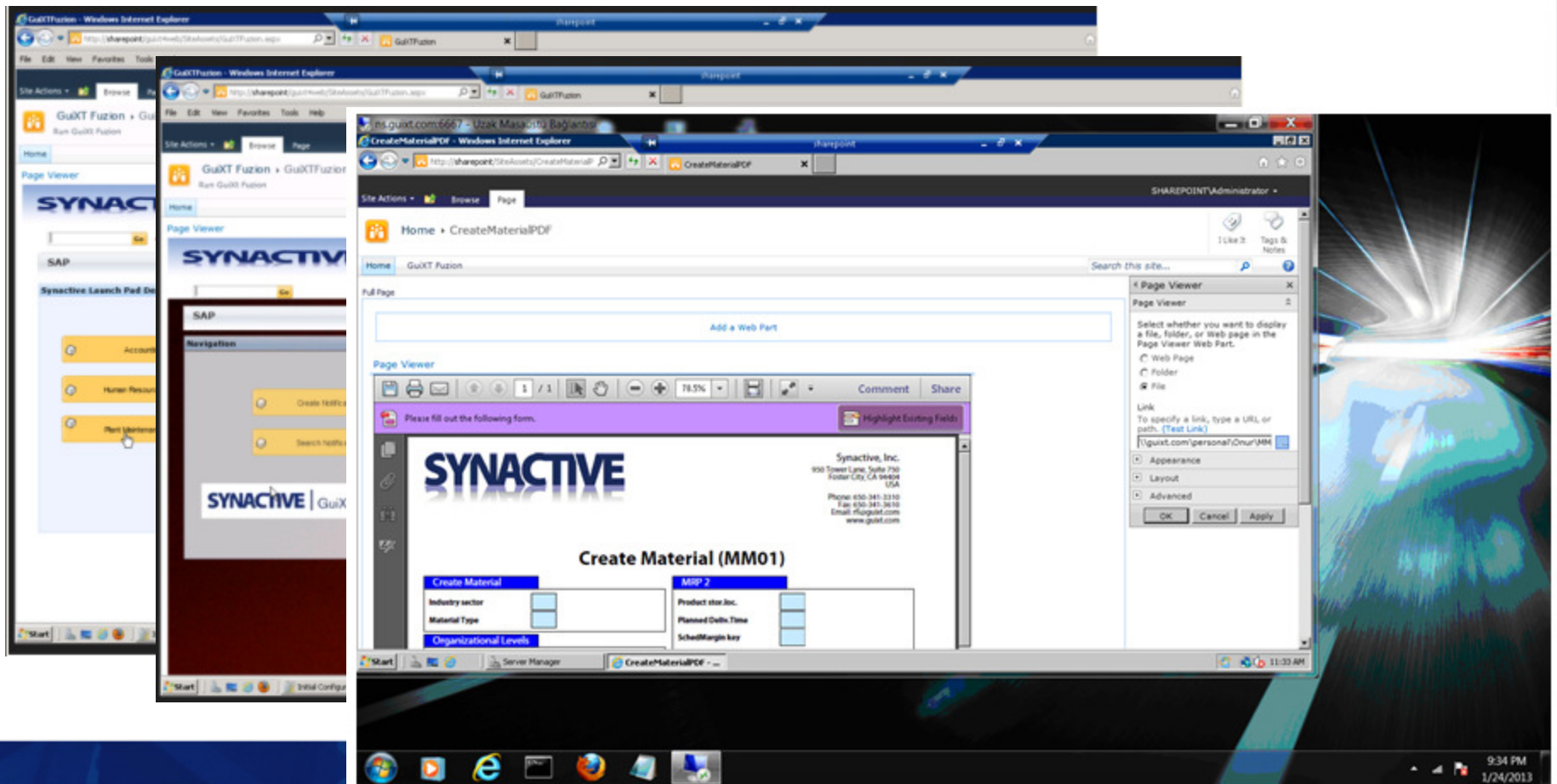
Browser



iPhone

# WebUI Integration with Sharepoint

- Embed WebUI or PDF as iFrame as an embedded HTML
- PDF file is created with workbench



# Extending SAP to PDF and Excel Front-ends

www.guixt.com

## Invoice

Information

PO Number  
Invoice  
Vendor Number  
Currency  
Payment Terms  
Reference

Payment Method  
☐ Credit  
☒ Check

Microsoft Excel - va01\_socreate.xls

File Edit View Insert Format Tools Data Window Help

100% Arial 10 B I U

E4 fx xx

	A	B	C	D	E	F	G	H	I	J
		Order Type	Sales Organization	Distribution Channel	Division	PO Number	PO date	Sold-to party	All items, Material	All items, Order Quantity
1	Message									
2	Standard Order 15534 has been saved	OR	1000	10	00	test	30.11.2011	1460	T-BW03-08	1
3									T-BW03-05	1
4	Processing ...	OR	1000	10	xx	test2	29.11.2011	10308	T-BW03-08	2
5										



# Introducing Liquid UI for iOS

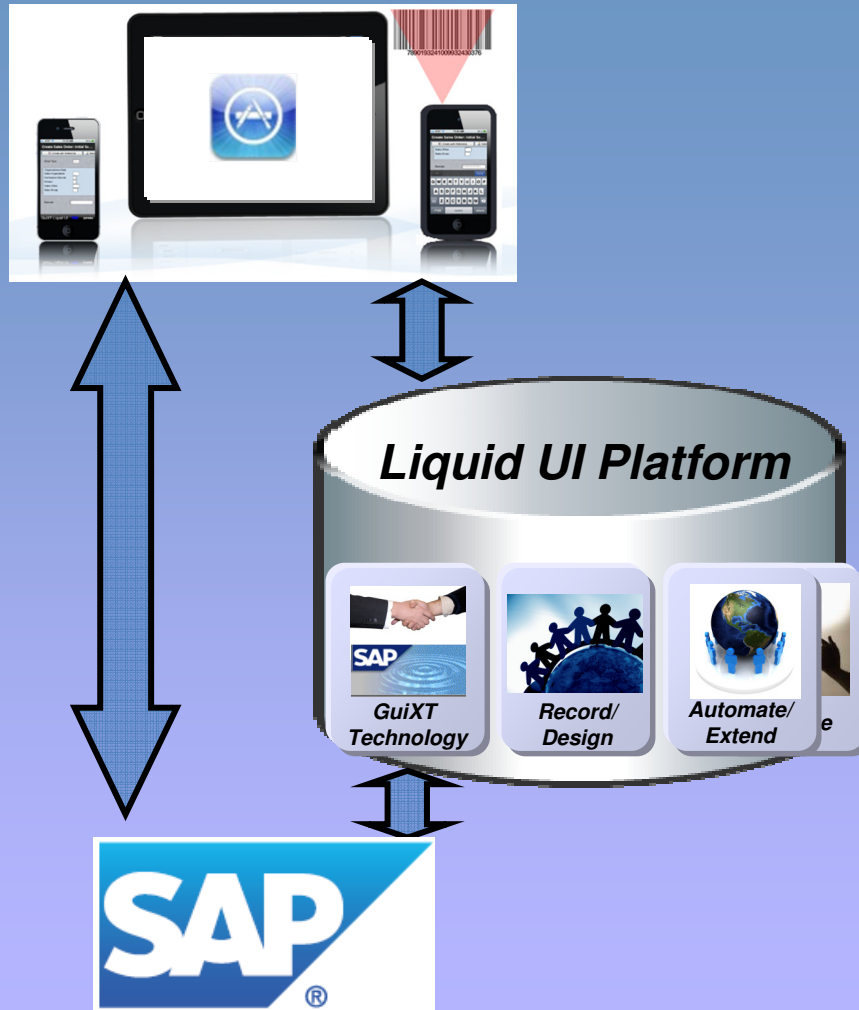
Redefining SAP GUI for the iOS

- Supports SAP GUI features such as F4, toolbars, menus, multiple sessions
- Multi-touch display with gestures and swipes to link actions in SAP
- Integrated device camera and 3<sup>rd</sup> party sled for barcode scanner
- Smaller screen size
- Convert input fields into single press graphical buttons
- Logon/Logoff desktop paradigm to 'always on' paradigm

**“Liquefy” the UI**

# New Liquid UI App for iOS and Platform

## Provide a Complete Framework to Mobilize Your Workforce

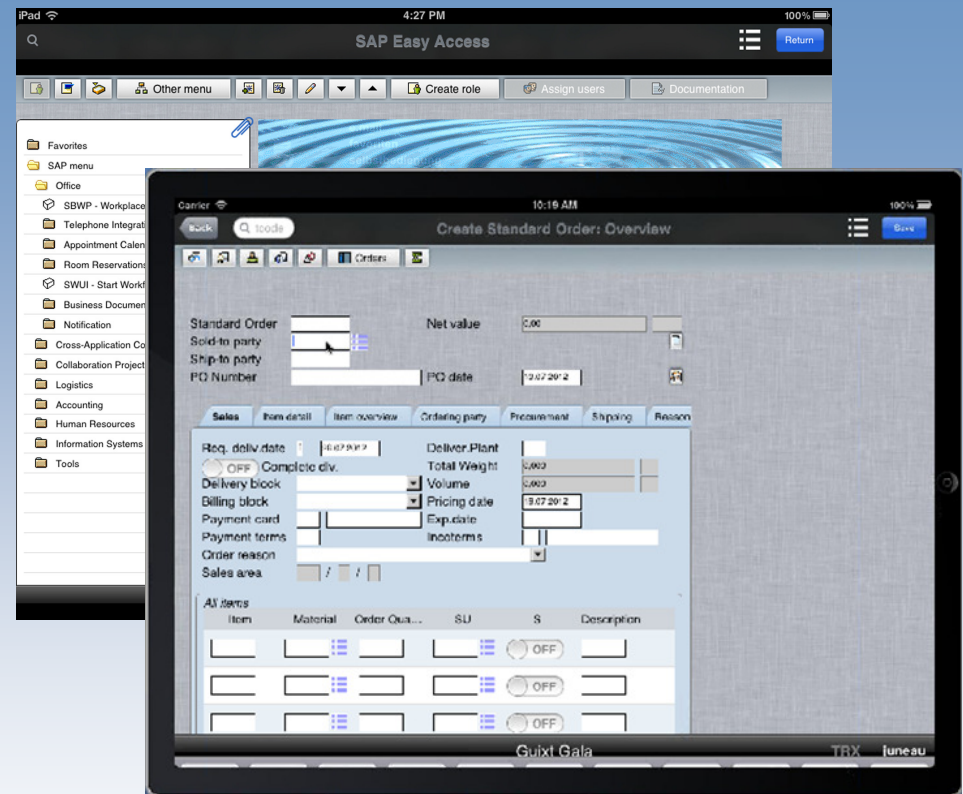


- Liquid UI for iOS App
  - With screen and process customizations
- Liquid UI Professional Edition (PE)
  - The Platform is a place to develop and deploy your screen and process customizations
- Liquid UI Enterprise Edition (EE)
  - PE plus Enterprise Features

# New Capabilities for *Liquid UI App for SAP ERP*

## Native access – No Screen Customizations

- Access to verified\* native SAP ERP transaction
- Does not require SUP or any other 3<sup>rd</sup> J2EE app server
- Direct Connection to SAP
- No changes to SAP security or underlying business logic
- Essential SAP GUI features (e.g. gestures, multi-sessions, etc.)

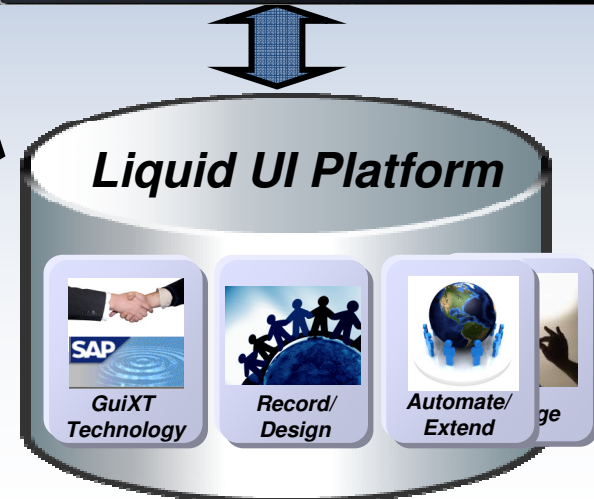
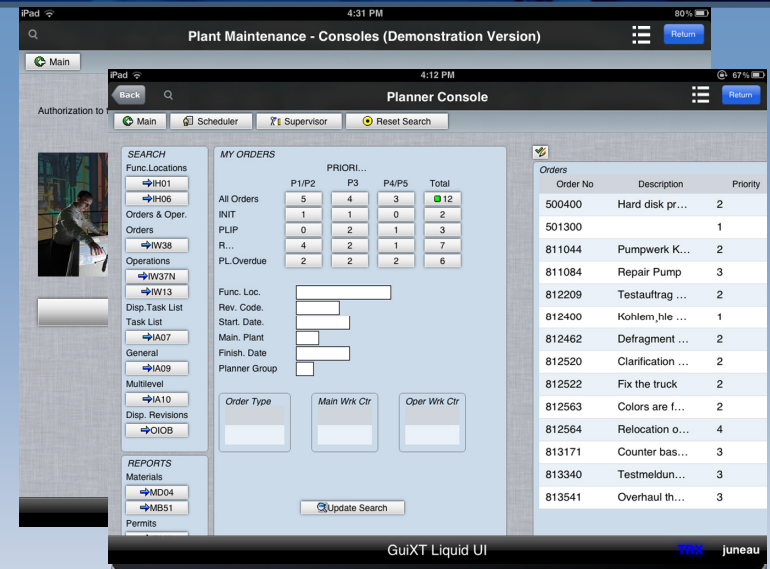


- ★ Check the Verified Transaction list on our website for tested transactions
- ★ Secure access to corporate network is recommended (e.g. VPN)

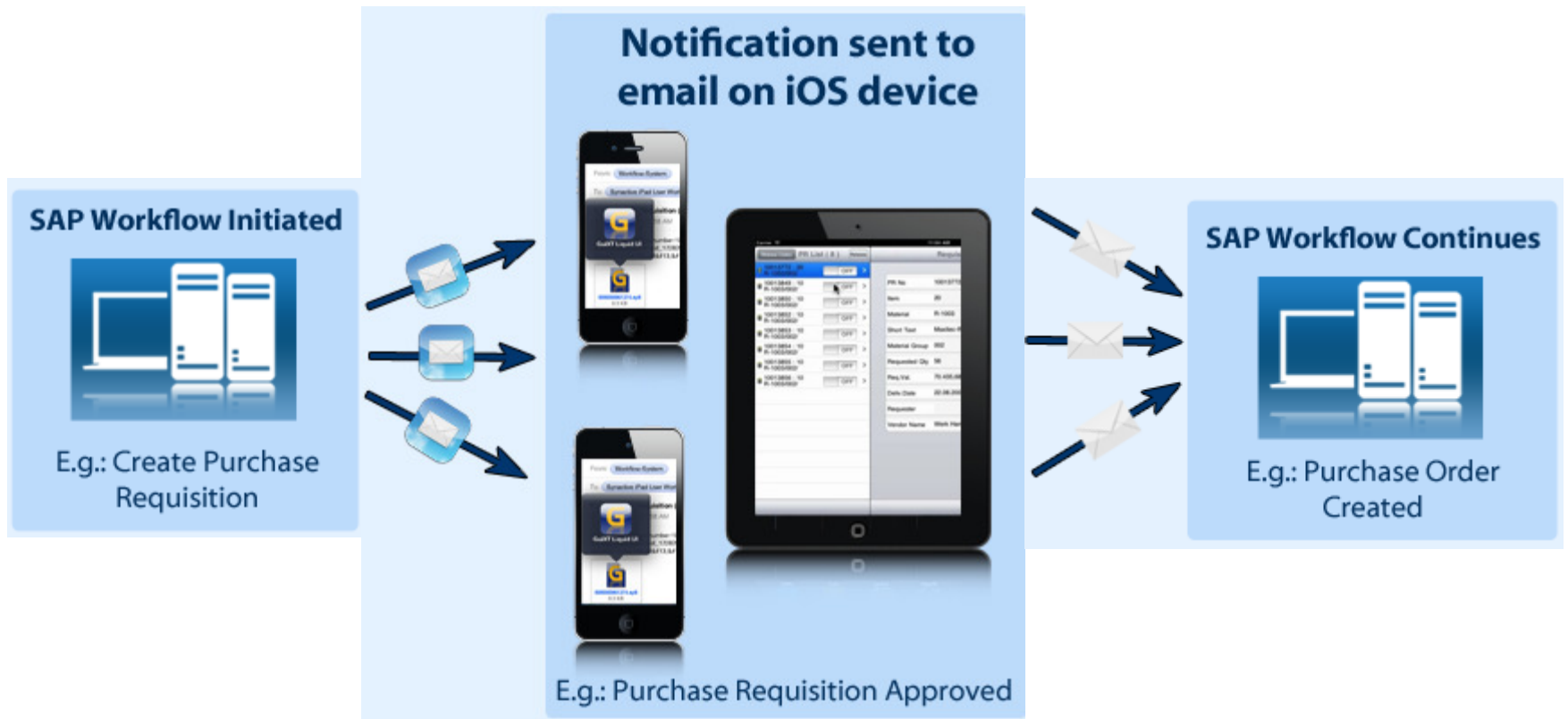


# GuiXT Liquid UI Professional Edition (PE)

- “Liquefy” the UI
- Manage User Access To SAP
- Secure Connection
- Robust Connection
- Session Persistence
- Virtual Sessions
- Smart Attribute – Barcode scanning
- SAP Workflow integration to email app (see next slide)



# Workflow Example



**No additional 3rd party product (e.g. Duet, SharePoint or SUP) required.**

# Feature Matrix

	Liquid UI for ions App	Liquid UI Professional Edition	Liquid UI Enterprise Edition
Direct Connect and verified transactions	√	√	√
Liquefy UI		√	√
Manage User Access To SAP			√
Secure Connection			√
Robust Connection			√
Session Persistence			√
Virtual Sessions			√
Smart Attribute – Barcode scanning			√
SAP Workflow			√

# LEARNING POINTS

- Tyson Foods Introduction and Overview
  - Tyson Foods Fleet Maintenance Business Process
  - SAP “Out-Of-Box” User Experience
  - New GuiXT Streamlined Business Process
  - GuiXT Streamlined and Simplified UI
  - Return on Investment
  - Best Practices
  - Summary
- How Synactive Can Help
  - Synactive Product Overview
  - Case Studies
- Q&A

# Plant Maintenance Planning and Scheduling Console

Easily monitor and manage all work orders from one screen

## Challenges

- *Planners overwhelmed with corrective maintenance scheduling and rescheduling.*
- *Complex SAP screens caused user errors and data integrity issues*
- *No centralized view for management*
- *Cluttered screens reduced productivity*



**Solution: Planners and Schedulers have everything they need on one screen.**



# Plant Maintenance Planning and Scheduling Console

System Help

**Supervisor**

Planner Scheduler Reset Search

**SEARCH**

Func.Locations

→ IH01

→ IH03

Orders & Oper.

→ IW38

Operations

→ IW37N

Order Confr.

→ IW41

**Task Lists**

→ IA08

→ IA10

**SCHEDULE**

→ CM25

→ CM01

→ IR02

**REPORTS**

Reports

**MY ORDERS**

	P1	P2	P3	P4	P5	Total
All Orders	2	18	9	3	0	32
AWAP	0	3	1	1	0	5
RSCH	0	2	0	0	0	2
RDSP	0	1	1	0	0	2
DSPT	0	0	1	0	0	1
Overdue	0	1	0	0	0	1
Pastdue	2	18	3	1	0	24
PCNF	0	1	1	0	0	2
CNF	0	2	2	0	0	4

Func. Loc.  Order type

Main Wk Ctr  Oper. Wk Ctr

Start. Date  Finish. Date

Update Search

**Orders**

Order No	Description	Pri...	Func. Loc	Status	Type	Sys.	St.Date.	Fn.Date	Sel.
100003434	Test M1	3	EFG0-CPFB...	PLIP	PM01	CRTD...	04/05/2012	04/05/2012	
100003435	MR - GuiXT #3 from ...	2	EFG0-CPFB...	RSCH	PM01	REL ...	03/28/2012	03/28/2012	
100003436	UD - Sample Mainten...	4	EFPL-FOR0...	PLIP	PM01	CRTD...	04/26/2012	04/26/2012	
100003437	UD - Sample Mainten...	3	EFKE-CPF7...	AWAP	PM01	CRTD...	04/10/2012	04/10/2012	
100003438	MR GuiXT #2	2	EFG0-CPFB...	PLIP	PM01	CRTD...	03/28/2012	03/28/2012	
100003441	MR GuiXT #5	2	EFG0-CPFB...	AWAP	PM01	CRTD...	03/28/2012	03/28/2012	
100003442	MR GuiXT #3	2	EFG0-CPFB...	PLIP	PM01	CRTD...	03/28/2012	03/28/2012	
100003521	Final test for ENH_...	4	EFG0-EV10...	RJCT	PM01	CRTD...	06/11/2012	08/23/2012	
200010223	Pumpjack failure te...	2	EFKE-74R0...	INIT	PM02	REL ...	03/27/2012	03/29/2012	
200010224	Motor stopped runni...	2	EFKE-74R0...	PLIP	PM02	CRTD...	03/27/2012	03/29/2012	
200010225	Well-head separator...	3	EFKE-0BK0...	PLIP	PM02	CRTD...	04/09/2012	05/25/2012	
200010226	Pump jack noise	3	EFKE-74R0...	PLIP	PM02	CRTD...	04/09/2012	05/25/2012	
200010227	Test 1234	3	EFKE-CPF7...	PLIP	PM02	CRTD...	04/05/2012	05/21/2012	
200010228	Pump jack leaking t...	2	EFKE-74R0...	PLIP	PM02	REL ...	03/28/2012	03/30/2012	
200010229	Pump jack leaking	2	EFKE-74R0...	PLIP	PM02	CRTD...	03/28/2012	03/30/2012	
200010230	MalfR: GuiXT #1	2	EFG0-BHT0...	PLIP	PM02	CRTD...	03/28/2012	03/30/2012	
200010232	M2 GuiXT Test #4	1	EFG0-CPFB...	PLIP	PM02	CRTD...	03/27/2012	03/28/2012	
200010233	M2 GuiXT Test #2	1	EFG0-CPFB...	PLIP	PM02	CRTD...	03/27/2012	03/28/2012	
200010234	Pump jack leaking	2	EFKE-74R0...	PLIP	PM02	CRTD...	03/29/2012	03/31/2012	
200010235	Pump jack leaking p...	3	EFKE-74R0...	PLIP	PM02	CRTD...	04/11/2012	05/27/2012	
200010236	Test order	3	EFKE-LGH0...	DSPT	PM02	REL ...	04/11/2012	06/21/2012	
200010237	Pump jack leaking d...	2	EFKE-74R0...	PLIP	PM02	CRTD...	03/29/2012	03/31/2012	

SAP

Synactive GuiXT

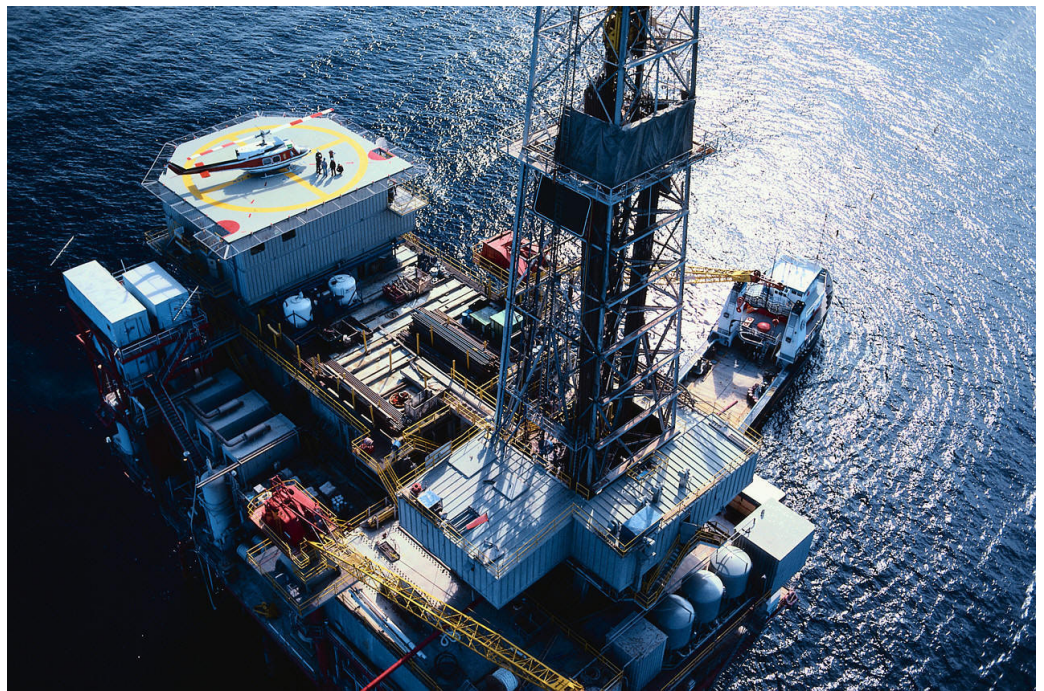
ZMPM1050 moh8007e INS

Start 2 Internet Explorer Marathon My Computer P997... 3 SAP Logon for... Synactive GuiXT 5 Notepad 5:47 PM



# Benefits of Using GuiXT

**With approximately 8,000 work orders in various stages, an average of 5 mines per work order was reduced to 30 sacs, increasing productivity by 90%.**



# Liquid UI- IOS

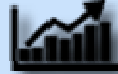


# GuiXT Solutions Case Study Results



## Plant Maintenance

Create Work Order was reduced from 8 minutes to 4 minutes. Improved workflow and reduced error rate by 50%. Reduced training from 2 hours to 30 minutes. Total Saving of \$90,000 per year.



## Materials Management

This helped them in reducing the training time by 75%, standardizing the process, making the users 66% more efficient and also helped in minimizing the errors.



## Procure To Pay

Ten to twelve actions reduced to a maximum of three actions; 75% time savings with improved accuracy.



## Sales Order / Quotes

Create sales order reduce to 3 screens from 22 screens, which previously took 8 minutes to process vs. 3 minutes. Training time reduced by 65%.



## Fleet Maintenance

Barcode scanners attached to Desktop for vehicle parts, streamlined the process increasing efficiency and improved truck deliveries by 60%. In addition, the warranty process saved \$1million per year.



## Order To Cash

Improved overall customer service and satisfaction by more than 60%.



## Warehouse Management

Physical inventory count process was reduce by 50%, errors reduced by 75%, employee productivity increased by 40%, easy to train employees and intuitive interface.



## Service Management

Change and Display transactions have the same benefits. Boost maintenance staff productivity by 100%, faster maintenance and fault repair system improves overall productivity. Over \$1million plus in annual savings.



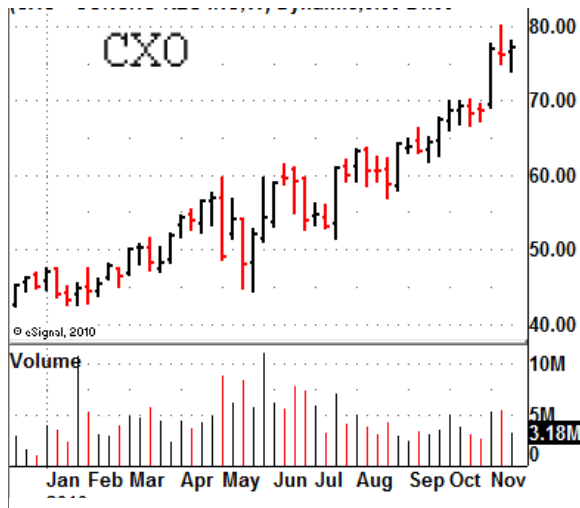


# Benefits for IT



- Start from SAP and build on it
- No Middleware
- Flexibility
- No traditional software development
- Extend SAP capabilities and business logic without needing to recode them.
- Supercharges programmer productivity
- Record once and deploy
- Eliminates errors
- 100% SAP Compatible

# Business Benefits



- Mitigate risk
- Patented connectivity technology
- Comply with regulatory requirements
- Validation of Data
- Segregation of Duties
- Improve User Adoption
- Increase in Productivity
- Reduced Costs

# How Can You Get Started?

**1) Download Tyson Success Story:**

[http://www.guixt.com/resources/success\\_stories.php](http://www.guixt.com/resources/success_stories.php)

**2) Learn from other customers in the Consumer Products industry:**

<http://www.guixt.com/industries/consumer.php>

**3) Download trial version of WYSIWYG tool:**

[http://www.guixt.com/solutions/free\\_trial.php](http://www.guixt.com/solutions/free_trial.php)

**4) Download free sample of customized screens of Plant Maintenance Schedulers and Planners Console:**

[http://www.guixt.com/solutions/free\\_trial.php](http://www.guixt.com/solutions/free_trial.php)



**Mobilize And Enable Your SAP Workforce NOW!**



# Upcoming Webinars

## **“How To” Series Part 3: Advanced Features of GuiXT Liquid UI, Wed July 31**

- Web service integration
- ODBC connection to non-SAP data
- Offline
- etc.

## **“Industry” Series:**

- Utilities, Aug
- Oil and Gas, Sept
- Retail, Oct
- Chemicals, Nov



# Thank You!!!

For more information about  
Synactive's GuiXT  
Solutions:

[www.guixt.com](http://www.guixt.com)

[rfi@guixt.com](mailto:rfi@guixt.com)

Tel: 650.341.3310