

Systems:
**GVERSE GeoGraphix Discovery Firewall
Setup for Windows**

GVERSE GeoGraphix Support

Maryam Zaheer

March 02, 2022

GeoGraphix Discovery Client to GeoGraphix Discovery Project Server:

For All GeoGraphix Supported Versions of Windows OS

This document is a basic guide to the minimum settings required to connect **GeoGraphix Discovery** through **Windows Firewall** on **Windows 7** and **10**.

If there is a third-party firewall in use instead, refer to its user manual for guidance. Here are the default ports **that GeoGraphix Discovery's** three services use (listen on):

Description	Program	Port#/Protocol
GGX Database Service / Adaptive Server Anywhere	dbsrv[xx].exe	2638/tcp
GGX List Service (v2) / GeoSync Module	GeoSync.exe	13384/tcp
GGX Network Access Service / Network Access	GGXNASrv.exe	13385/tcp

Excerpt from Microsoft: Windows Firewall

Windows Firewall can help protect your PC from hackers and malicious software. In Windows 7 (and 10), it's still powerful—but we've made it more flexible and easier to use.

For example, now you can fine-tune the protection and notifications you want for each of your network profiles—Home, Work, and Public. When you're connected to a public network like a library or a coffee shop, you may want to block all incoming connections. At home or work, this might be overkill. Whatever level of protection you choose for your profiles, you'll be able to switch between them with ease...

Why these Settings?

GeoGraphix Discovery has a peer-to-peer model for communication. This means that all systems regardless of the operating system type are both clients as well as servers. Any machine that will operate in the **GeoGraphix Discovery Network Project** sharing environment that has **Windows Firewall** turned on requires these settings.

For more details on administering **Windows Firewall** or **Windows Firewall Advanced Settings**, refer to **Windows Firewall on Microsoft's Website**.

Note: In some environments, the Windows Firewall is configured via group policy by IT Administrators. It may be off or on - but you may not have permission to make any changes. Contact your IT Administrator if you cannot configure your Windows Firewall.

Symptoms this document applies to:

The **GeoGraphix Network Project Sharing Environment** is enabled by default:

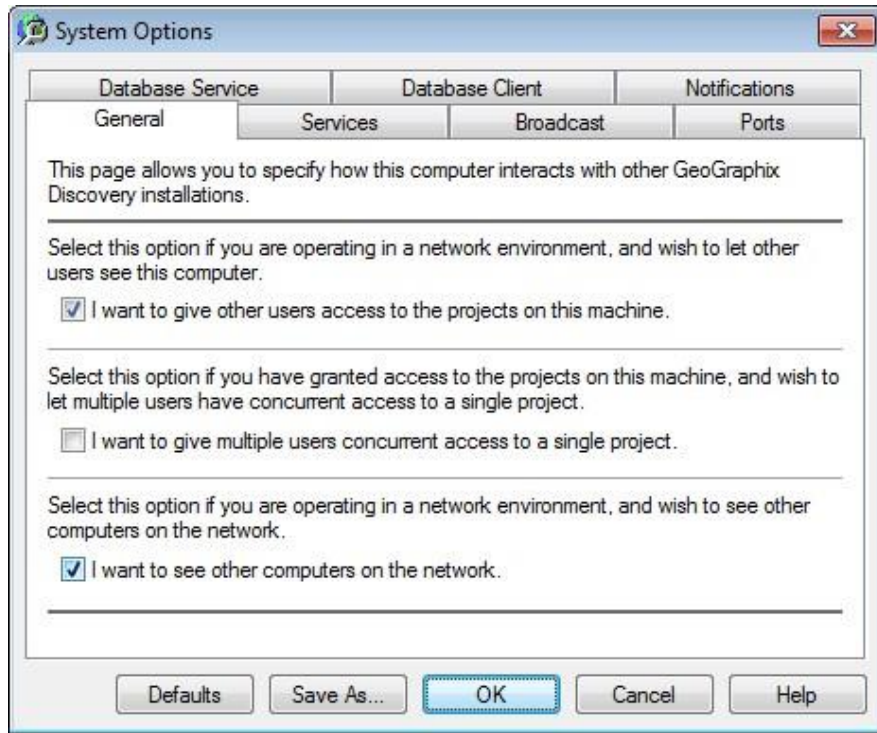


Figure 1: The System Options dialog box.

However, if **GeoGraphix Discovery** users cannot see other workstations or project servers (**ProjectExplorer** left pane - **Network mode**), then it is likely that the **Windows Firewall** (or the third party security software program) on the workstation is blocking access to the other workstations and/or the project server.

*Example - **Project Servers** are not visible in **ProjectExplorer** left pane under the **Network** mode:*

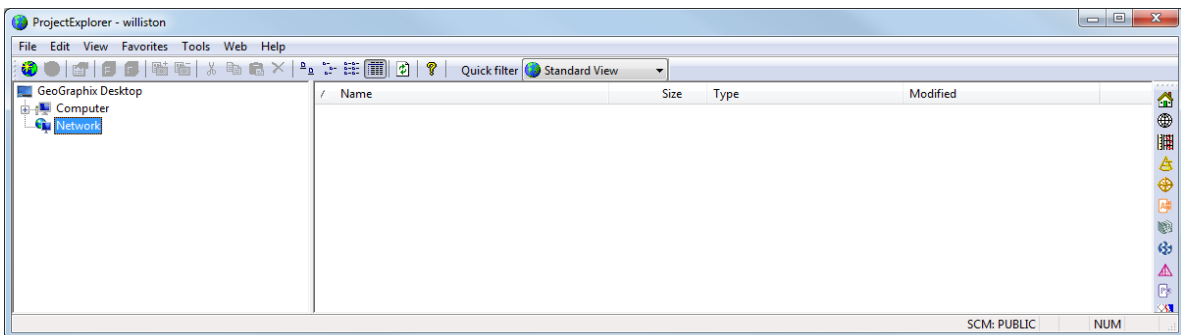


Figure 2: The Project Explorer window.

Therefore, the **Firewall** requires configuration. For security purpose, it is highly recommended to always turn on and properly configure **Windows Firewall**.

Note: The revision of Discovery in the GeoGraphix environment match on all workstations and servers. Domain Authentication or Workgroup User Name and Password Distribution have already been addressed. The GeoGraphix project home folder NTFS folder and file permissions are setup appropriately and are confirmed correct.

Windows Firewall Setup

The **GeoGraphix Network Project Sharing Environment** is enabled by default:

1. Open the **Windows Firewall** from the **Windows** task bar.

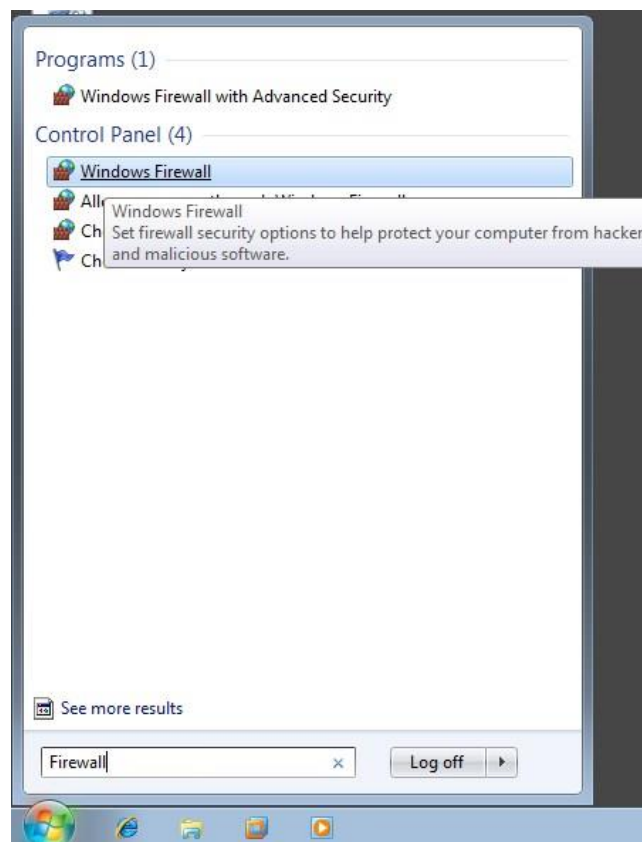


Figure 3: The Windows task bar.

2. There are two possible scenarios:
 - a. **Windows** joined to a **Domain** network, as shown in the image below:



Figure 4: The Windows Firewall window joined to domain networks.

- b. or **Windows** on a **Home** or **Work** (private) **network** (workgroup computers for example), as shown below:



Figure 5: The Windows Firewall window on a Home or Work network.

3. Click the **Allow a program or feature through Windows Firewall** link.



Figure 6: The Windows Firewall window.

4. Click **Change Settings**.

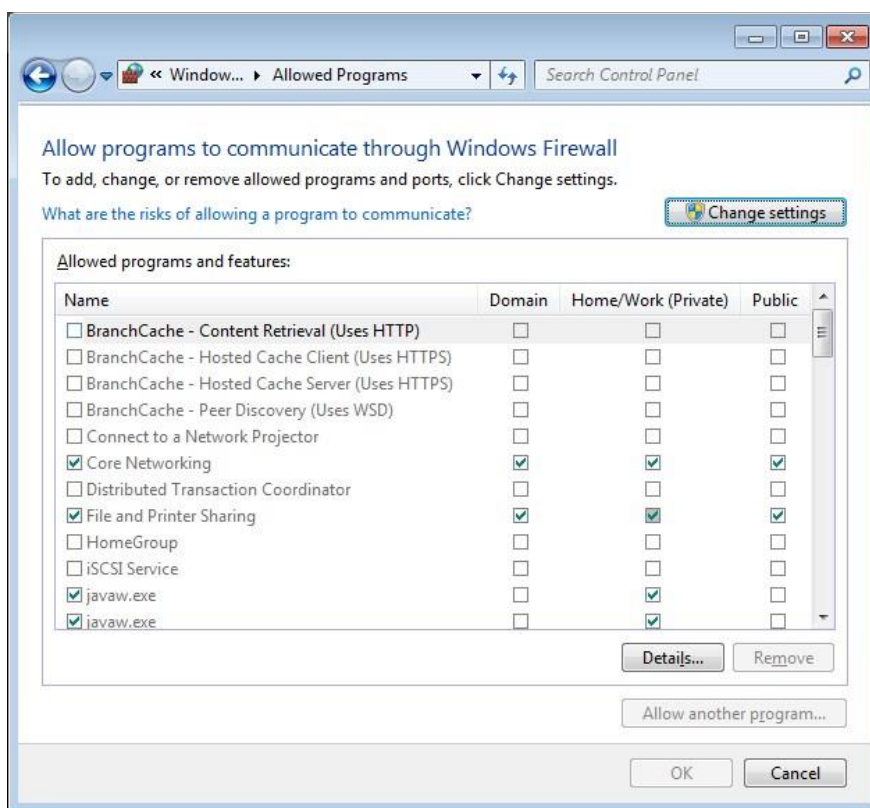


Figure 7: The Allowed Programs window.

5. Click **Allow another program...** and add the following programs:
 - Browse to *C:\Program Files (x86)\GeoGraphix\Tools\GeoSync.exe*.
 - Browse to *C:\Program Files (x86)\GeoGraphix\Tools\GGXNASrv.exe*.
 - Browse to *C:\Program Files (x86)\GeoGraphix\SQL Anywhere XX\Bin64\dbsrvXX.exe*.
 - Discovery 2016.x to onwards = \SQL Anywhere 17\Bin64\dbsrv17.exe
 - Discovery 2015.x = \SQL Anywhere 12\Bin64\dbsrv12.exe
 - Discovery 2014.x = \SQL Anywhere 12\Bin64\dbsrv12.exe

6. You will now see **GeoSync Module**, **GGXNASrv Module**, and **SQL Anywhere Network Server** in the list of **Allowed** programs and features. **Discovery** will now be able to see the **Project Server** and connect to the projects on the **Project Server**.

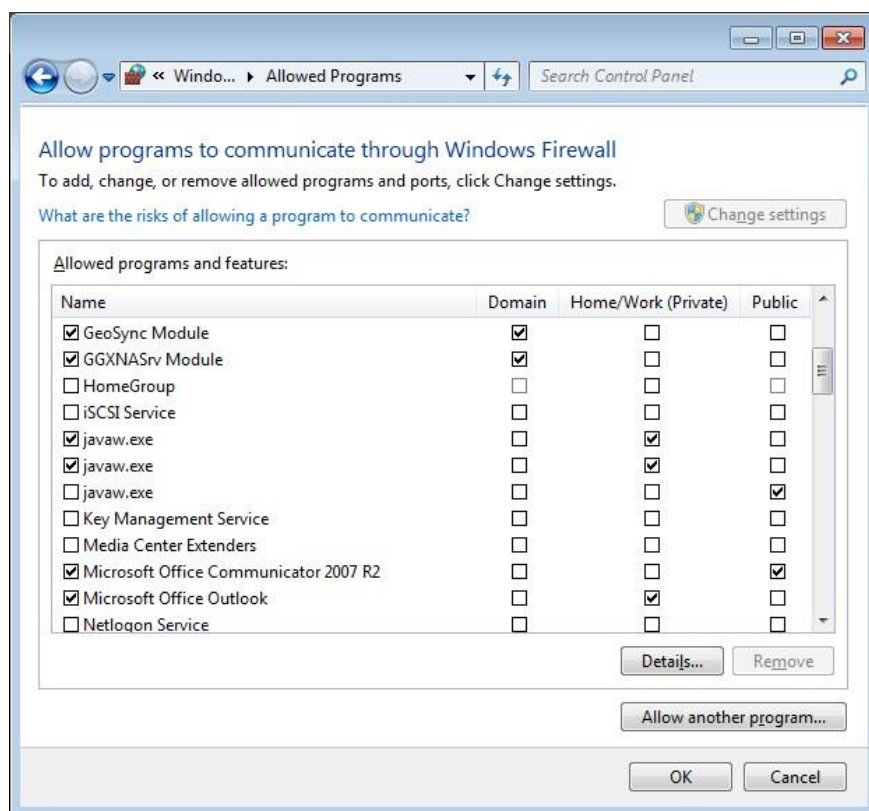


Figure 8: The Allowed Programs dialog box.

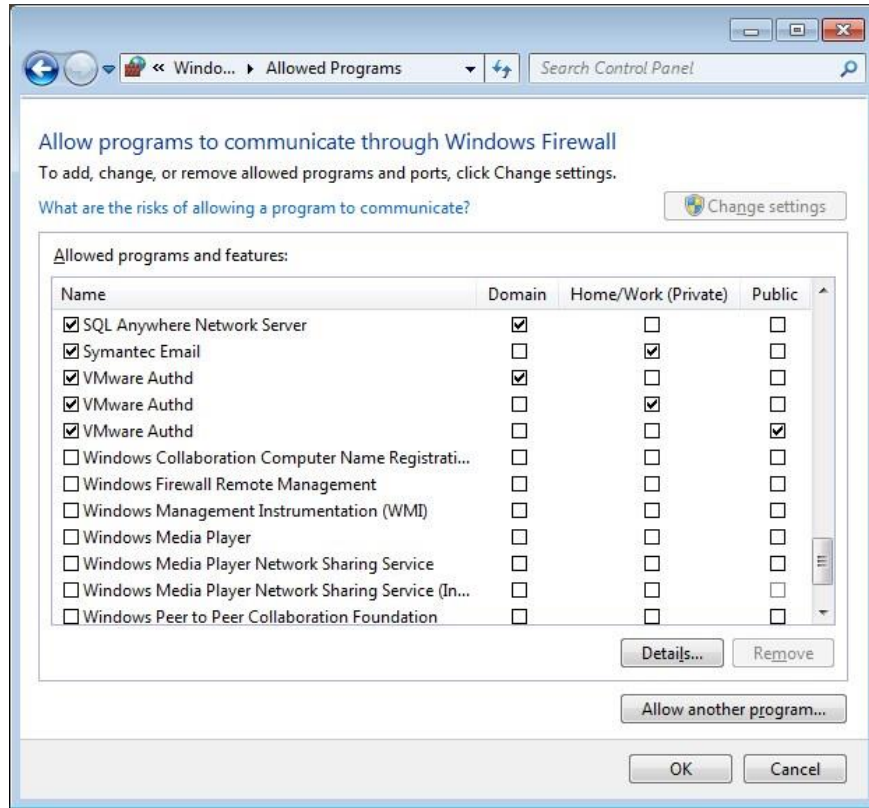


Figure 9: The Allowed Programs dialog box.

7. Use the steps above to add any additional **Programs** as desired. It is recommended to add **GeoAtlas** and **WellBase** at a minimum.