



MOUNT BARKER WILDLIFE GARDENING



LOCAL • ATTRACTIVE • WILDLIFE FRIENDLY

MOUNT BARKER WILDLIFE GARDENS - LOCAL INDIGENOUS PLANTS

PLANT NAME DESCRIPTION



Acacia acinacea

Gold Dust Wattle

Small shrub to 2.5m. Abundant yellow flowers in late winter/spring.

Uses: Background shrub in mixed plantings, wind-break or low screen.

- Bird and butterfly attracting



Acacia myrtifolia

Myrtle Wattle

Small shrub to 2.5m. Abundant yellow flowers in winter/spring.

Uses: Suitable for areas of low maintenance, roadside verges, road batters and wide median strips as a barrier, wind-break or erosion control.

- Requires well-drained soils
- Bird and insect attracting
- Fast growing



Acacia retinodes

Wirilda

Small tree, 5-8 metres.

- Attracts birds, native butterflies and insects
- Domed canopy
- Full sun or part shade



Acaena novae zelandiae

A small prostrate perennial

Uses: May be used as a ground cover or lawn substitute. It grows in freely draining soils such as silty and sandy loams on sites which receive a high amount of sunlight. Establishes readily on disturbed sites.





MOUNT BARKER WILDLIFE GARDENING



Allocasuarina muelleriana

Bull Oak

Medium shrub to 2.5m. Ideal for informal screening.

Uses: A fast growing medium shrub suitable for an informal hedge or screen in wider nature strips, parks, and reserves or planted singly in mixed native landscapes. Foliage has a rusty tinge at flowering.

- Requires well-drained soils
- Food source and habitat for birds



Allocasuarina verticillata

Drizzling Sheoak

Medium tree to 15m. Long lived. Shade. Windbreak.

Uses: Ornamental species for shade or shelter in streetscapes, reserves and parks. Planted en-mass an effective screen.

- Tolerant of coastal locations
- Food source and habitat for birds



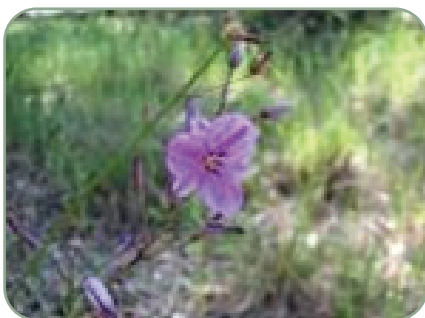
Aristida behriana

Wiregrass

Native perennial grass that forms low open tussocks.

Produces light catching flower heads in Autumn and Spring. Young flower heads have a slight purple tinge turning to cream as they mature.

Uses: A good alternative to the weedy Feather Grasses



Arthropodium strictum

Chocolate Lily

Ground cover with mauve flowers in Spring and Summer.

- Will self sow
- Underground tubers were eaten by indigenous peoples
- Grows 0.2 - 1m



Atriplex semibaccata

Berry saltbush

Berry Saltbush is a prostrate growing ground cover

Grows to about 1m diameter and up to 40cm high. It flowers all year round and has red edible berries in spring and summer. Is tolerant of saline and slightly waterlogged conditions and is very drought tolerant. It has dense foliage that covers the ground, acting as a green mulch that provides protection for both the soil and fauna. The seeds are an important food source for insects, birds and small marsupials.



GOOLWA TO WELLINGTON
Local Action Planning Association



MOUNT BARKER
DISTRICT COUNCIL





MOUNT BARKER WILDLIFE GARDENING



Austrostipa elegantissima

Elegant Spear-grass

Uses: Ornamental tufting perennial for mixed landscapes, borders or verges.

- Food source and habitat for small birds
- Food source for butterflies and lizards
- Caterpillar Food for native butterfly species
- 1-2m tall, 1m spread
- Full sun



Banksia ornata

Desert Banksia

Yellow flowers in autumn and winter. Spreading bushy habit.

- Attracts nectar feeding and seed feeding birds
- 1-2m tall - 1-2m spread
- Full sun or part shade



Banksia marginata

Silver Banksia

Hardy and versatile native that can grow to 8m.

Attracts native birds and insects for food and habitat. It is a hardy, fast growing and long-lived species that favours a sunny or partly shady position and may become spindly if grown in the shade. Flowers throughout the year produces copious amounts of nectar. Attracts nectar feeding wildlife such as honeyeaters, pygmy-possums and bees. Seeds are eaten by cockatoos, particularly the Yellow-tailed Black Cockatoo.



Callistemon rugulosus

Scarlet Bottlebrush

Large shrub to 3m x 3m Scarlet bottlebrush flowers.

Uses: In verges, median streets, parks and reserves. Planted singly as a colourful background in mixed plantings or en-mass as a barrier or informal hedge.

- Prune after flowering for dense habit
- Requires well-drained soils
- Attracts nectar eating birds and insects



Callistemon sieberi

Attractive easy to grow plant

Uses: Could be used in a shrubbery, as a screen or informal hedge. A medium sized scrub to 2.5m. Fast growing with soft foliage and a showy flower display

- Attracts nectar feeding birds
- Will tolerate drought and light frosts.





MOUNT BARKER WILDLIFE GARDENING



Callitris gracilis
Southern Cypress Pine

Wind-break or screen.

Uses: Can be used as a wind-break or screen in parks and along roadsides. Tolerant of coastal locations. Can be grown as a stand alone specimen or grouped as an eye catching landscape feature.

- Bird attracting for food source and habitat.



Calocephalus citreus
Lemon Beauty-heads

A dwarf perennial herb.

Uses: for mixed native landscapes, rockeries and borders.

- Attracts native butterflies
- Requires good drainage
- Dies back in winter.
- Yellow flowers in Spring and Summer



Calytrix tetragona
Common Fringe Myrtle

A hardy shrub for the small garden

Usually reaching 1m or more. To obtain a bushy plant, watering and light prunings will avoid bare wood.

- White or pink flowers in October to December.
- Attractive to bees.



Carex tereticaulis
Rush Sedge

Ornamental tussock grass for damp locations.

- Butterfly attracting
- Caterpillar food.
- 0.8-1m high. Up to 1m spread
- Tolerant of full shade to full sun
- Brown flower clusters in Autumn and Spring



Chloris truncata
Windmill Grass

An ornamental fast growing perennial grass.

Uses: Good in rockeries or mixed gardens. Food source for native birds

- 0.3 – 0.5m high
- Up to 0.5m spread
- Full sun, part shade
- Flowers in spring and summer





MOUNT BARKER WILDLIFE GARDENING



Chrysocephalum apiculatum

Common Everlasting

Spreading herb to 30cm. Golden everlasting flowers. Hardy.

Uses: Perennial herb for mixed native landscapes, parks and reserves. Suitable for mass planting or informal drifts, spreads by suckering.

- Profuse flowering. Requires well-drained soils
- Attracts native butterflies and insects
- Caterpillar food plant



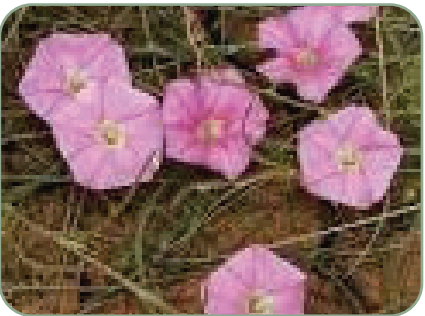
Clematis microphylla

Old Man's Beard

Non-vigorous climber to 4m

Uses: Great for growing along fences or up trees. Flowers in winter and produces seed heads in spring. The seed heads have fluffy white and silvery 'beards'. Grows in full sun to part shade and does best in well-drained soils.

- Provides nesting sites for native birds
- Attracts bees and butterflies.

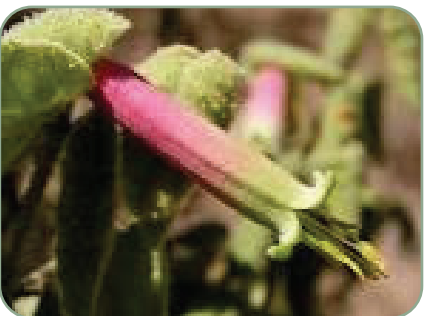


Convolvulus remotus

Native Bindweed

Twining ground cover

- 0.1 – 0.2m in height with a spread up to 0.6m
- Full sun.



Correa reflexa

Native fuschia

Flowering ornamental shrub

Uses: as understorey or low informal screen or hedge. • •

- Prolific flowering
- Attracts nectar eating native birds
- 0.5-1m high. 0.8-1m spread
- Pink flowers in Autumn and Winter



Cullen australasicum

Native Scurf Pea

Medium sized ground layer plant to 0.5m attractive purple pea flowers over winter to spring. Butterfly attracting.

Uses: A fast growing perennial for native landscaping, parks and reserves in rocky sites.

- Important food source for the larvae of migratory Swallowtail butterflies





MOUNT BARKER WILDLIFE GARDENING



Cymbopogon ambiguus

Scent Grass

Attractive grass with leaves that give off a strong lemon or citron odour when crushed.

Uses: Great for using in rockery plantings. Drought resistant but has a healthier appearance with a little extra water.

- Cream flowers all year round
- Drought resistant but will look healthier with extra water
- 0.3-0.8m high. Up to 0.5m spread.



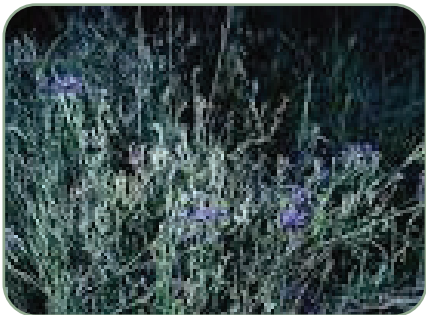
Cyperus vaginatus

Stiff Flat-sedge

Ornamental sedge

Uses: For ponds, wetlands and watercourses

- Food source for native birds and frogs
- 0.3-1m high. 0.5m spread



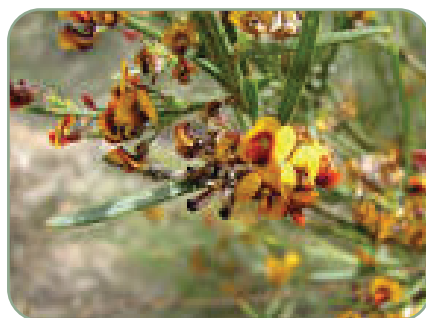
Dampiera rosemarinifolia

Rosemary Dampiera

Ground cover

Uses: suitable under trees, in raised beds and embankments. Aids weed suppression and soil control.

- 0.2-0.5m high. Up to 2m spread
- White, blue, mauve or pink flowers in Summer and Winter



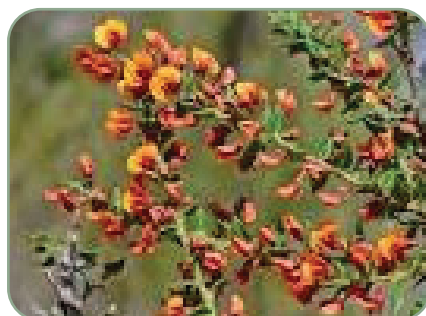
Daviesia leptophylla

Narrow-leaf bitter-pea

Feature plant

Uses: can be used as a screen, barrier or informal hedge. Suitable for areas of low traffic due to prickly branches. Bird and insect attracting, bird habitat

- 1-2.5m high. 1-2m spread
- Pea flower in Spring.



Daviesia ulicifolia

Gorse bitter-pea

Feature plant

Uses: can be used as a screen, barrier or informal hedge. Suitable for areas of low traffic due to prickly branches.

- Bird and insect attracting
- Bird habitat
- 1-2m high. 1m spread
- Pea flower in Spring, Winter





MOUNT BARKER WILDLIFE GARDENING



Dichondra repens

Kidney weed

Ground Cover

Uses: Attractive and useful ground cover or lawn substitute.

- Vigorous grower if watered regularly
- Prefers full sun but will grow in up to 80% shade.



Digitaria brownii

Cotton Panic Grass

Tufted perennial grass to 1m high.

Flowers from April to July. Prefers sand, clay, loam, granite rocks.



Dodonaea viscosa ssp spatulata

Sticky Hop Bush

Fast growing medium shrub to 2-3m with showy flowers and seed capsules. Hardy in most soils. Full sun to shade.

Uses: A fast growing ornamental foliage plant. Suitable for parks, reserves and wider roadside plantings, effective wind-break in dry areas.

- Responds to pruning
- Decorative coloured fruits



Einadia nutans

Climbing Saltbush

Climber

Uses: Hardy climber and/or groundcover for mixed native landscapes.

- Attracts native birds and butterflies
- Food and habitat for native birds and butterflies
- Native caterpillar food source
- Flowers in Spring and Winter



Enneapogon nigricans

Black-heads,
bottlewashers

This grass, also known as bottle washers or blackheads, forms tall, dense tussocks to a maximum of 20cm across. Distinctive lance-shaped seedheads appear in late spring and summer. Leaves are smooth and a bright, light green. Prefers sunny position. The plants will die down in late summer before re-shooting when the rains return.





MOUNT BARKER WILDLIFE GARDENING



Enchylaena tomentosa

Ruby Saltbush

Hardy contrasting small prostrate ground cover to 0.5m with edible berries.

Uses: Extremely hardy low shrub or ground cover for areas of neglect. Produces yellow, to dark red fruits eaten by native birds, lizards and small native mammals. Berries change colour as they mature which creates additional ornamental interest.

- Requires well-drained soils. Responds to pruning



Eucalyptus fasciculosa

Pink Gum

Pink Gum typically grows to 10-15 metres with a single main trunk. It has smooth, off-white to slaty blue bark that is shed in flakes. Flowers most months between March and December and the flowers are white



Eutaxia microphylla Ground Cover

Small-leaved Mallee-pea

Uses: A ground cover for small areas of low traffic due to mature prickly growth. Hardy over extended dry periods and tolerant of a wide range of soils.

- Attracts native butterflies
- caterpillar food plant
- Responds well to hard pruning
- 0.2-0.3m high. 0.5-1.5m spread
- Red pea flowers in Spring



Ficinia nodosa

Knobby Club Rush

Rush to 1m. Very hardy accent plant. Does well in riparian areas and sand dunes. Good for erosion control.

Uses: Planted singly or in groups for mixed landscapes as a feature, or mass planted, in borders or verges.

- Extremely hardy
- Tolerant of calcareous soils
- Fast growing



Goodenia amplexans

Clasping Goodenia

Hardy groundcover or low shrub.

Pruning encourages bushier growth. Requires good drainage. Yellow flowers early spring to late summer.

- Attracts native butterflies and insects
- caterpillar plant food.





MOUNT BARKER WILDLIFE GARDENING



Goodenia ovata

Hop Goodenia

Fast growing shrub to 2m. Yellow flowers all year. Riparian areas and floodplain soils.

Uses: Highly ornamental for more open locations, wider verges, median strips, parks and reserves. Planted singly as a colourful background in mixed plantings or en-mass as a barrier or informal hedge.

- Can become straggly, responds to pruning
- Attracts native butterflies and insects
- Caterpillar food plant



Goodenia pinnatifida

Cutleaf Goodenia

Small herbaceous plant that grows to 40cm tall.

Leaves may die off over summer if it is hot and dry. Bright yellow flowers form from October to November and March to May.



Goodenia varia

Sticky Goodenia

An ornamental plant

Uses: Can be used singly as a colourful foreground amongst mixed natives. Suited to acidic and calcareous soils.

- Responds well to pruning
- Attracts native butterflies and insects
- Caterpillar plant food.
- Flowers all year round.

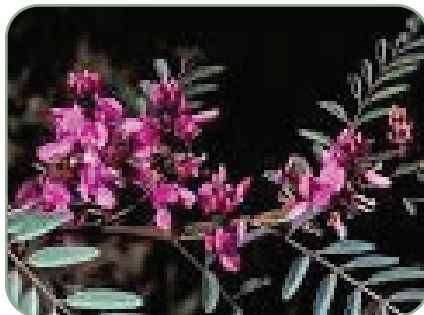


Grevillea lavandulacea

Lavender Grevillea

Hardy ornamental foliage plant

- Responds to pruning
- Grows 1-1.5m tall
- Flowers in spring and winter.
- Tolerates drought and heavy frost
- Attracts native birds and insects



Hakea carinata

Hakea carinata

Medium to large ornamental shrub

Uses: can be used for screening.

- Bird attracting and habitat source
- 1.5-3m high. 1-2.5m spread. Full sun
- Red flowers in Winter and Spring





MOUNT BARKER WILDLIFE GARDENING



Hakea mitchellii

Desert Hakea

Medium shrub to 1-4m tall

Uses: suitable as an informal hedge, screen or barrier in low traffic areas due to its prickly foliage. Requires well-drained soils.

- Lizard refuge
- Flowers in clusters in spring and summer.



Hakea rugosa

Wrinkled Hakea

Wide spreading shrub (0.7-2m high) with stiff, straight needle-shaped leaves.

Flowers profusely with densely clustered cream or white fragrant flowers from August to October.

- Prefers Sun to part shade
- Attractive to butterflies, bees and birds.



Hardenbergia violacea

Native Wisteria

Climber or small shrub to 2-3m. Mauve flowers in winter. Hardy.

Uses: A vigorous small shrub or climber, plant singly in mixed beds, wider verges and roundabouts, mass plants an effective ground or fence cover.

- Responds to hard pruning to improve shape and form
- Can be trained to climb
- Attracts native butterflies
- caterpillar food source



Ixodia achillaeoides

Hills Daisy

Small ornamental shrub with clusters of white flowers in winter, spring and summer.

Uses: Popular as a cut or dried flower. Useful as a rockery plant, background shrub or container plant.

- 1m high, 1m spread
- Full sun



Juncus pallidus

Pale Rush

Good perennial hardy rush

Prefers low-lying moisture retentive sites but tolerates extended dry periods

- Valuable for bird and wildlife habitat
- Flowers in autumn and Summer
- 0.5-2.3m high. 0.3-1m spread





MOUNT BARKER WILDLIFE GARDENING



Juncus kraussii

Sea rush

Good perennial rush for riparian zones, developed areas, biofiltration systems or raingardens.

- 0.6-1m high, 0.5-1.5m spread
- Full sun
- Tolerates drought and moderate frost



Juncus subsecundus

Finger Rush

Perennial rush

Uses: suitable for moist and wet soils along watercourses and wetlands. Tolerant of periods of inundation, provides attractive foliage in large clumps.

- Valuable for waterbird and wildlife habitat
- Tolerates some dryness once plants are established



Kennedia prostrata

Running Postman

Groundcover with 2m spread. Red pea flowers in winter.

Uses: Ornamental creeper in amongst mixed natives on slight slopes and embankments. Suitable for open landscapes, parks and reserves.

- Requires well-drained soils
- Can die back to woody rootstock and reshoot when times are favourable
- Attracts native butterflies • Caterpillar food source



Leptospermum continentale

Fast growing ground cover with fragrant flowers that attract nectar eating birds and butterflies.

- Dense copses are excellent refuges for native birds, small mammals and lizards
- Slightly prickly
- 0.5-1m high, 2-3m spread
- Full sun, part shade, frost hardy



Leptospermum lanigerum

Woolly tea-tree

A small tree or medium shrub with grey-green leaves and white flowers in summer.

- Hairy capsules produced as fruit
- Very hardy
- 3m high. 1-3m spread





MOUNT BARKER WILDLIFE GARDENING



Lomandra myrsinoides
Silky Tea-tree

Dense fast growing shrub.

Uses: Useful for poorly drained sites. Good for habitat, hedges, ornamental plantings, wind protection and erosion control.

- Responds well to pruning
- 1-4m tall
- White/pink flowers in spring.



Lomandra multiflora

Tussock forming hardy mat-rush with stiff foliage and contrasting colours.

Uses: A ground cover for small areas of low traffic due to mature prickly growth. Suitable for soil control on embankments and raised beds where there is some shade.

- Responds well to hard pruning
- Hardy over extended dry periods
- Tolerant of a wide range of soils
- Attracts native butterflies • Caterpillar food plant



Melaleuca decussata
Totem Poles

Medium shrub to 2m with mauve flowers in winter to spring. Adaptable to most soils.

Uses: Small Melaleuca with lovely mauve-purple flowers in spring and summer. Can be clipped and maintained as a hedge or grown as a screen.

- Tolerates most well drained soils

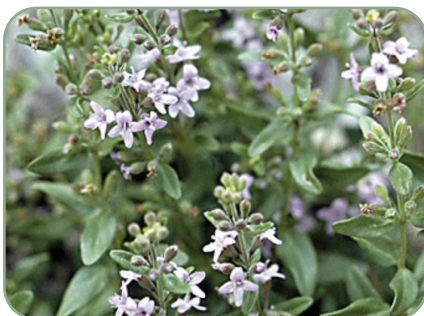


Mentha australis
River Mint

Native mint ideal for wet areas, gardens and pots. White flowers in summer. 0.5m tall.

Uses: Good plant for growing in containers. Foliage contains a strongly aromatic oil. It's peppermint taste has been used as a garnish for food and drinks, and indigenous peoples have used a boiled extract for the treatment of colds.

- Rejuvenate plants by heavy pruning



Mentha diemenica
Native Peppermint

Native peppermint with spreading habit to 20cm high. Spreads as groundcover via stolons. Higher rainfall sites.

Uses: Good plant for growing in containers. Foliage contains a strongly aromatic oil. It's peppermint taste has been used as a garnish for food and drinks, and indigenous peoples have used a boiled extract for the treatment of colds.

- Rejuvenate plants by heavy pruning





MOUNT BARKER WILDLIFE GARDENING



***Microlaena
stipoides***

Weeping Rice-grass

Slender perennial grass.

Uses: Good for mixed plantings and understorey plantings. Good alternative to exotic grasses in amenity plantings.

- Attracts native butterflies
- caterpillar plant food
- 0.1-0.7m high. 0.2-1m spread



***Microseris
lanceolate***

Native Yam Daisy

Low perennial herb growing to 50cm high. Solitary yellow flowers on a long stalk.



***Pelargonium
australe***

Austral Storks-bill

Attractive perennial herb.

Uses: for landscaping and understorey planting. Responds well to pruning. Requires well-drained soil.

- Butterfly attracting
- 0.3-0.7m high. 0.5-1.5m spread
- Full sun or part shade
- Pink flowers in Spring, Autumn.



Poa labillardieri

Tussock Grass

Tussock grass to 0.5m with green foliage and attractive seed heads.

Uses: An ornamental tufting perennial for mixed native landscapes, borders, and wider verges. Mass plant for effect.

- Rejuvenate by shearing to just above ground level during late winter, early spring
- Attracts native butterflies
- Larval food source
- Food source and habitat for small birds and lizards



***Pomaderris
paniculosa***

coast pomaderris

Medium drought tollerant shrub.

Good for screening, and attracting birds. Insect pollinated. Pink flowers appear in spring. Flowers are relatively small but their abundance gives a pinkish tinge to the tips of each plant. The leaves are dark green, with a woolly bronze on the underside.



GOOLWA TO WELLINGTON
Local Action Planning Association



MOUNT BARKER
DISTRICT COUNCIL





MOUNT BARKER WILDLIFE GARDENING



Pultenaea daphnoides

Large-leaved Bush-pea

Medium shrub with hardy foliage and striking flowers.

Uses: Plant singly for contrasted or grouped as an informal hedge.

- Requires well-drained soils and responds well to pruning
- Attracts nectar eating birds and insects
- 1-3m high. 1-2 spread
- Red/yellow flowers in Spring



Rytidosperma caespitosum

Wallaby Grass

Tussock grass to 30cm. Attractive white tops. Suits most soils.

Uses: A tussock grass for native landscapes, parks and reserves. For rockeries, borders, fill-ins or planted en-mass.

- Thrives in poor soils and areas of neglect
- Seed source for native birds
- Caterpillar food
- Plant for native butterfly species



Scaevola albida

Fan-flower

Ornamental ground cover.

Uses: for foreground or undershrub planting in semi-shaded areas. Requires well-drained soils. Responds well to pruning.

- Attracts native butterflies and caterpillar food plant
- 0.1m high. 0.3-1m spread.



Senecio pinnatifidus

Variable Groundsel

Multibranced yellow-flowering herb to knee height.

Uses: Short-lived coloniser ideal for cottage gardens and will self sow.

- Attracts bees, butterflies and other beneficial insects
- Flowers in spring
- Responds to pruning



Thomasia petalocalyx

Paper Flower

A low-spreading shrub with a soft, furry appearance

it usually grows to a height of 80cm with a spread of around 160 cm. Paper Flower begins flowering in late October and continues on until January. During this period small sprays of pinkish-coloured flowers cover the branches. These attractive cup-shaped blooms, with striking brown anthers are 10-15mm across. This Thomasia is suited to most reasonably well-drained soils and requires little attention once plants are established. Plants grow equally well in full sun or in a semi-shaded area.





MOUNT BARKER WILDLIFE GARDENING



Viola betonificifolia

Mountain Violet,
Showy Violet

Small perennial herb to ankle high grows as single plants. Critically endangered in the Mount Lofty Ranges. Previously thought to be extinct in SA but was recently discovered in Mt Bold Reservoir.

- Showy mauve flowers in Winter
- Butterfly attracting and food plant
- Shade/part sun.



Vittadinia australasica

A hardy perennial self-seeding herb

Uses: Good for borders, verges or understorey plantings.

- Requires well-drained soils
- Pink/purple flowers in autumn and winter



Vittadinia blackii

Western New
Holland Daisy

A hardy perennial self-seeding low shrub

Uses: Good for borders, understorey or drifts.

- Requires well drained soils
- Purple flowers in Autumn and Winter
- 0.2-0.3m high. 0.4-0.5m spread
- Full sun



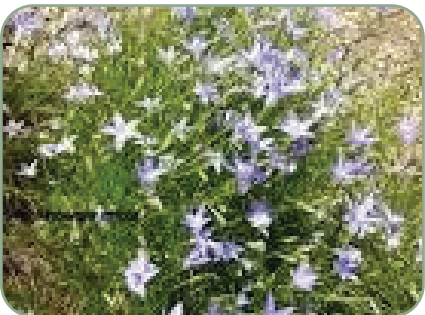
Vittadinia cuneata

New Holland Daisy

Small herb to 30cm tall. Blue flowers and attractive seed heads ideal cottage garden plant.

Uses: A hardy perennial self seeding herb for borders, verges and roundabouts mass planted as an understorey or in drifts in native landscapes.

- Requires well-drained soils



Wahlenbergia sp

Blue-bell

Low groundcover with blue flowers in Spring and Summer.

Uses: Ideal in mass displays, pots and mixed beds.

- Butterfly attracting
- 0.4-0.9m high. 0.3-0.4m spread

Images have been sourced from GWLAP staff and online. Images other than from GWLAP are acknowledged where known and photographic credit will be added if required and provided. Some cultivation information sourced from the Botanic Gardens of South Australia's Plant Selector.





MOUNT BARKER WILDLIFE GARDENING



Xanthorrhoea quadrangulata

Grass Tree

A striking specimen plant in native landscaping

very slow growing. Regenerates after fire.

- Attracts nectar eating birds and butterflies
- Food source for Black Cockatoos

Images have been sourced from GWLAP staff and online. Images other than from GWLAP are acknowledged where known and photographic credit will be added if required and provided. Some cultivation information sourced from the Botanic Gardens of South Australia's Plant Selector.

