



---

# Gryphon™ D432/D432E



**Reference Manual**

---

**Datalogic Scanning, Inc.**  
**959 Terry Street**  
**Eugene, Oregon 97402**  
**Telephone: (541) 683-5700**  
**Fax: (541) 345-7140**

An Unpublished Work - All rights reserved. No part of the contents of this documentation or the procedures described therein may be reproduced or transmitted in any form or by any means without prior written permission of Datalogic Scanning, Inc. or its subsidiaries or affiliates ("Datalogic" or "Datalogic Scanning"). Owners of Datalogic products are hereby granted a non-exclusive, revocable license to reproduce and transmit this documentation for the purchaser's own internal business purposes. Purchaser shall not remove or alter any proprietary notices, including copyright notices, contained in this documentation and shall ensure that all notices appear on any reproductions of the documentation.

Should future revisions of this manual be published, you can acquire printed versions by contacting your Datalogic representative. Electronic versions may either be downloadable from the Datalogic website ([www.scanning.datalogic.com](http://www.scanning.datalogic.com)) or provided on appropriate media. If you visit our website and would like to make comments or suggestions about this or other Datalogic publications, please let us know via the "Contact Datalogic" page.

#### **DISCLAIMER**

Datalogic has taken reasonable measures to provide information in this manual that is complete and accurate, however, Datalogic reserves the right to change any specification at any time without prior notice. Datalogic is a registered trademark of Datalogic S.p.A. in many countries and the Datalogic logo is a trademark of Datalogic S.p.A. all licensed to Datalogic Scanning, Inc. All other trademarks and trade names referred to herein are property of their respective owners.

# CONTENTS

---

Disclaimer .....	iii
<b>GENERAL VIEW .....</b>	<b>v</b>
<b>1 COMPLIANCE .....</b>	<b>VI</b>
FCC Compliance.....	vii
Laser Safety.....	vii
WEEE Compliance .....	xi
Power Supply.....	xi
<b>PATENTS .....</b>	<b>xi</b>
<b>WARRANTY .....</b>	<b>xi</b>
<b>SERVICES AND SUPPORT .....</b>	<b>xii</b>
<b>2 INTRODUCTION .....</b>	<b>1</b>
2.1 Gryphon™ D432/D432E Description .....	1
2.2 Package Contents.....	2
2.3 Configuration Methods .....	2
2.3.1 Reading Configuration Codes.....	2
2.3.2 Using VisualSetup.....	2
2.3.3 Sending Configuration Strings from Host.....	2
<b>3 USING GRYPHON™ D432/D432E .....</b>	<b>3</b>
3.1 Aiming System .....	3
3.2 Normal Operation.....	4
3.3 Image Capturing .....	4
3.3.1 Basic Configuration Parameters .....	5
3.3.2 Advanced Configuration Parameters .....	6
3.4 Autoscanning .....	7
3.4.1 Normal Mode .....	7
3.4.2 Pattern Mode .....	7
3.4.3 Stand Autorecognition.....	8
3.5 Camera Control.....	8
3.6 Defining Data Formatting .....	9
3.6.1 Concatenation.....	10
<b>4 INITIAL SETUP .....</b>	<b>11</b>
4.1 RS232 Interface Selection .....	11
4.2 Wedge Interface Selection .....	12
4.3 USB Interface Selection .....	13
Start-Up.....	13

<b>5</b>	<b>CONFIGURATION USING CODE SYMBOLS .....</b>	<b>16</b>
5.1	Default Settings.....	17
5.2	Changing Default Settings .....	22
5.3	Advanced Data Format .....	94
5.3.1	Format Definition.....	95
5.3.2	Match Conditions .....	112
5.3.3	Format Enable/Disable .....	114
5.3.4	Mismatch Result .....	115
<b>6</b>	<b>REFERENCES .....</b>	<b>116</b>
6.1	RS232 – USB COM .....	116
6.1.1	ACK/NACK Protocol .....	116
6.1.2	RX Timeout.....	116
6.2	USB Keyboard .....	117
6.2.1	Keyboard Speed .....	117
6.3	Code Selection.....	117
6.3.1	Issue Identical Codes.....	117
6.4	Reading Parameters .....	117
6.4.1	Safety Time.....	117
6.5	Configuration Editing Commands .....	118
<b>7</b>	<b>TEST CODE SYMBOLS.....</b>	<b>119</b>
<b>8</b>	<b>MAINTENANCE .....</b>	<b>121</b>
<b>9</b>	<b>TECHNICAL FEATURES .....</b>	<b>122</b>
9.1	Indicators .....	125
9.1.1	Gryphon™ D432/D432E LED Indicators.....	125
9.1.2	Beeper .....	125
9.1.3	Good Read Spot .....	125
	Function Description .....	139

# GENERAL VIEW

---

Gryphon™ D432/D432E



Figure A

# 1 COMPLIANCE



Figure B - Gryphon™ D432/D432E Reader Product Labels

## **FCC COMPLIANCE**

Modifications or changes to this equipment without the expressed written approval of Datalogic could void the authority to use this equipment.

This device complies with Part 15 of the FCC Rules. Operation is subject to the following two conditions: (1) This device may not cause harmful interference, and (2) this device must accept any interference received, including interference which may cause undesired operation.

This equipment has been tested and found to comply with the limits for a Class A digital device, pursuant to part 15 of the FCC Rules. These limits are designed to provide reasonable protection against harmful interference when the equipment is operated in a commercial environment. This equipment generates, uses, and can radiate radio frequency energy and, if not installed and used in accordance with the instruction manual, may cause harmful interference to radio communications. Operation of this equipment in a residential area is likely to cause harmful interference in which case the user will be required to correct the interference at his own expense.

## **LASER SAFETY**

The Gryphon™ D432/D432E hand-held reader is a Class 1 LED product regarding its Illuminator and a Class 2 laser product regarding its Aiming System.

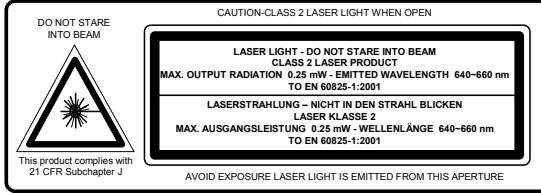
### **LED Illuminator**

The use of an illuminator in the Gryphon™ D432/D432E hand-held reader is a Class 1 LED product:

ILLUMINATORE LED CLASSE 1  
AUSLEUCHTER LED KLASSE 1  
ILLUMINATEUR A LED DE CLASSE 1  
ILUMINADOR LED DE CLASE 1

# Aiming System

The Gryphon™ D432/D432E aiming system meets the requirements for laser safety.



I	D	F	E
LA LUCE LASER È VISIBILE ALL'OCCHIO UMANO E VIENE EMESSA DALLA FINESTRA INDICATA NELLA FIGURA.	DIE LASER-STRABLUNG IST FÜR DAS MENSCHLICHE AUGESICHTBAR UND WIRD AM STRAHLAUS-TRITTSFENSTER AUSGESENDET (SIEHE BILD)	LE RAYON LASER EST VISIBLE À L'OEIL NU ET IL EST ÉMIS PAR LA FENÊTRE DÉSIGNÉE SUR L'ILLUSTRATION DANS LA FIGURE	A LUZ LÁSER ES VISIBLE AL OJO HUMANO Y ES EMITIDA POR LA VENTANA INDICADA EN LA FIGURA.
LUCE LASER NON FISSARE IL FASCIO APPARECCHIO LASER DI CLASSE 2 MASSIMA POTENZA D'USCITA: LUNGHEZZA D'ONDA EMESSA: CONFORME A EN 60825-1 (2001)	LASERSTRABLUNG NICHT IN DEN STRAHL BLICKEN PRODUKT DER LASERKLASSE 2 MAXIMALE AUSGANGSLEISTUNG: WELLENLÄGE: ENTSPR. EN 60825-1 (2001)	RAYON LASER EVITER DE REGARDER LE RAYON APPAREIL LASER DE CLASSE 2 PUISSANCE DE SORTIE: LONGUEUR D'ONDE EMISE: CONFORME A EN 60825-1 (2001)	RAYO LÁSER NO MIRAR FIJO EL RAYO APARATO LÁSER DE CLASE 2 MÁXIMA POTENCIA DE SALIDA: LONGITUD DE ONDA EMITIDA: CONFORME A EN 60825-1 (2001)

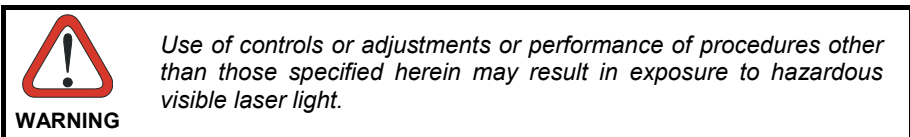
## ENGLISH

The following information is provided to comply with the rules imposed by international authorities and refers to the correct use of your terminal.

### STANDARD LASER SAFETY REGULATIONS

This product conforms to the applicable requirements of both CDRH 21 CFR 1040 and EN 60825-1 at the date of manufacture.

For installation, use and maintenance, it is not necessary to open the device.





The product utilizes a low-power laser diode. Although staring directly at the laser beam momentarily causes no known biological damage, avoid staring at the beam as one would with any very strong light source, such as the sun. Avoid that the laser beam hits the eye of an observer, even through reflective surfaces such as mirrors, etc.

### ITALIANO

Le seguenti informazioni vengono fornite dietro direttive delle autorità internazionali e si riferiscono all'uso corretto del terminale.

#### NORMATIVE STANDARD PER LA SICUREZZA LASER

Questo prodotto risulta conforme alle normative vigenti sulla sicurezza laser alla data di produzione: CDRH 21 CFR 1040 e EN 60825-1.

Non si rende mai necessario aprire l'apparato per motivi di installazione, utilizzo o manutenzione.



**ATTENZIONE**

*L'utilizzo di procedure o regolazioni differenti da quelle descritte nella documentazione può provocare un'esposizione pericolosa a luce laser visibile.*

Il prodotto utilizza un diodo laser a bassa potenza. Sebbene non siano noti danni riportati dall'occhio umano in seguito ad una esposizione di breve durata, evitare di fissare il raggio laser così come si eviterebbe qualsiasi altra sorgente di luminosità intensa, ad esempio il sole. Evitare inoltre di dirigere il raggio laser negli occhi di un osservatore, anche attraverso superfici riflettenti come gli specchi.

### DEUTSCH

Die folgenden Informationen stimmen mit den Sicherheitshinweisen überein, die von internationalen Behörden auferlegt wurden, und sie beziehen sich auf den korrekten Gebrauch vom Terminal.

#### NORM FÜR DIE LASERSICHERHEIT

Dies Produkt entspricht am Tag der Herstellung den gültigen EN 60825-1 und CDRH 21 CFR 1040 Normen für die Lasersicherheit.

Es ist nicht notwendig, das Gerät wegen Betrieb oder Installations-, und Wartungsarbeiten zu öffnen.



**ACHTUNG**

*Jegliche Änderungen am Gerät sowie Vorgehensweisen, die nicht in dieser Betriebsanleitung beschrieben werden, können ein gefährliches Laserlicht verursachen.*

Der Produkt benutzt eine Laserdiode. Obwohl zur Zeit keine Augenschäden von kurzen Einstrahlungen bekannt sind, sollten Sie es vermeiden für längere Zeit in den

Laserstrahl zu schauen, genauso wenig wie in starke Lichtquellen (z.B. die Sonne). Vermeiden Sie es, den Laserstrahl weder gegen die Augen eines Beobachters, noch gegen reflektierende Oberflächen zu richten.

### FRANÇAIS

Les informations suivantes sont fournies selon les règles fixées par les autorités internationales et se réfèrent à une correcte utilisation du terminal.

#### NORMES DE SECURITE LASER

Ce produit est conforme aux normes de sécurité laser en vigueur à sa date de fabrication: CDRH 21 CFR 1040 et EN 60825-1.

Il n'est pas nécessaire d'ouvrir l'appareil pour l'installation, l'utilisation ou l'entretien.



**ATTENTION**

*L'utilisation de procédures ou réglages différents de ceux donnés ici peut entraîner une dangereuse exposition à lumière laser visible.*

Le produit utilise une diode laser. Aucun dommage aux yeux humains n'a été constaté à la suite d'une exposition au rayon laser. Eviter de regarder fixement le rayon, comme toute autre source lumineuse intense telle que le soleil. Eviter aussi de diriger le rayon vers les yeux d'un observateur, même à travers des surfaces réfléchissantes (miroirs, par exemple).

### ESPAÑOL

Las informaciones siguientes son presentadas en conformidad con las disposiciones de las autoridades internacionales y se refieren al uso correcto del terminal.

#### NORMATIVAS ESTÁNDAR PARA LA SEGURIDAD LÁSER

Este aparato resulta conforme a las normativas vigentes de seguridad láser a la fecha de producción: CDRH 21 CFR 1040 y EN 60825-1.

No es necesario abrir el aparato para la instalación, la utilización o la manutención.



**ATENCIÓN**

*La utilización de procedimientos o regulaciones diferentes de aquellas descritas en la documentación puede causar una exposición peligrosa a la luz láser visible.*

El aparato utiliza un diodo láser a baja potencia. No son notorios daños a los ojos humanos a consecuencia de una exposición de corta duración. Eviten de mirar fijo el rayo láser así como evitarían cualquiera otra fuente de luminosidad intensa, por ejemplo el sol. Además, eviten de dirigir el rayo láser hacia los ojos de un observador, también a través de superficies reflectantes como los espejos.



**CAUTION**

*The Gryphon™ D432/D432E Hand-Held Reader is not user-serviceable. Opening the case of the unit can cause internal damage and will void the warranty.*

## **WEEE COMPLIANCE**



## **POWER SUPPLY**

This device is intended to be connected to a UL Listed/CSA Certified computer which supplies power directly to the reader or else be supplied by a UL Listed/CSA Certified Power Unit marked "Class 2" or LPS power source rated 5 V, minimum 330 mA, which supplies power directly to the reader via the power connector of the cable.

## **PATENTS**

---

This product is covered by one or more of the following patents:

U.S. patents: 6,512,218 B1; 6,808,114 B1; 6,877,664 B1 and 6,478,226 B2.

European patent: 1,128,315 B1.

Additional patents pending.

## **WARRANTY**

---

Datalogic warrants this product against defects in workmanship and materials, for a period of 5 years from the date of shipment, provided that the product is operated under normal and proper conditions.

Datalogic has the faculty to repair or replace the product; these provisions do not prolong the original warranty term.

The warranty does not apply to any product that has been subject to misuse, accidental damage, unauthorized repair or tampering.

# SERVICES AND SUPPORT

---

Datalogic provides several services as well as technical support through its website. Log on to [www.scanning.datalogic.com](http://www.scanning.datalogic.com) and click on the links indicated for further information including:

- **PRODUCTS**

Search through the links to arrive at your product page where you can download specific **Manuals** and **Software & Utilities** including:

- **VisualSetup** a Windows-based utility program allowing device configuration using a PC. It provides RS232 interface configuration as well as configuration barcode printing.

- **SERVICES & SUPPORT**

- **Datalogic Services** - Warranty Extensions and Maintenance Agreements

- **Authorised Repair Centres**

- **CONTACT US**

E-mail form and listing of Datalogic Subsidiaries

## 2 INTRODUCTION

---

### 2.1 GRYPHON™ D432/D432E DESCRIPTION

The Gryphon™ D432/D432E reader is an omni-directional barcode scanner having the following characteristics:

- Plug and Play**      The Gryphon™ D432/D432E is very ergonomic and user-friendly for intuitive operation and is equipped with plug-and-play enhanced Multistandard Architecture. It can be connected to a Host PC through a USB, RS232 or Wedge emulation cable.
- Omni-directional Operating**      To read a symbol or capture an image, you simply aim the reader and pull the trigger. Since Gryphon™ D432/D432E is a powerful omni-directional reader, the orientation of the symbol is not important.
- Decoding**      Thanks to powerful algorithms, Gryphon™ D432/D432E reliably decodes all major 1D (linear) barcodes, 2D stacked codes (such as PDF417), 2D matrix symbols (such as DataMatrix), postal codes (such as POSTNET, PLANET). The data stream — acquired from decoding a symbol — is rapidly sent to the host. The reader is immediately available to read another symbol.
- Formatting and Concatenating**      The string of a decoded code may be processed according to either a simple or advanced data formatting and be concatenated to other codes (up to 4 different codes).
- Imaging**      Gryphon™ D432/D432E can also function as a camera by capturing entire images or image portions of labels, signatures, and other items. Two different control modes are available for managing the camera exposure and calibration.
- Autoscanning**      An autoscan command causes the reader to scan continuously and to monitor the central zone of its reading area.
- Flash Memory**      Flash technology allows to upgrade the Gryphon™ D432/D432E reader as new symbologies are supported or as improved decoding algorithms become available.

## **2.2 PACKAGE CONTENTS**

The following parts are included in the Gryphon™ D432/D432E package contents:

- Gryphon™ D432/D432E Hand-Held Reader
- Gryphon™ D432/D432E Quick Reference Manual

You may want to save your packing material in case you need to ship the reader at some later time.

## **2.3 CONFIGURATION METHODS**

### **2.3.1 Reading Configuration Codes**

This manual can be used for complete setup and configuration. If you wish to change the default settings, you can configure the Gryphon™ D432/D432E reader by reading the programming code symbols in this manual. Configuration commands and their relative arguments are read individually using the symbols in this manual. See Appendix D.

### **2.3.2 Using VisualSetup**

The Datalogic VisualSetup program, available on the website, allows programming the reader by selecting configuration commands or printing them through a user-friendly graphical interface running on the PC. These commands are sent to the reader over the current communication interface; or they can be printed to be read.

### **2.3.3 Sending Configuration Strings from Host**

An alternative configuration method is provided in Appendix A using the RS232 or USB COM interface. This method is particularly useful when many devices need to be configured with the same settings. Batch files containing the desired parameter settings can be prepared to configure devices quickly and easily.

## 3 USING GRYPHON™ D432/D432E

---

### 3.1 AIMING SYSTEM

The Gryphon™ D432/D432E reader uses an intelligent aiming system. By pulling the trigger, the aiming system indicates a field of view, which should be positioned over the code:

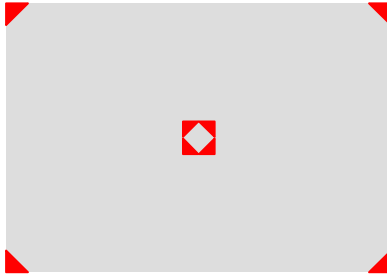
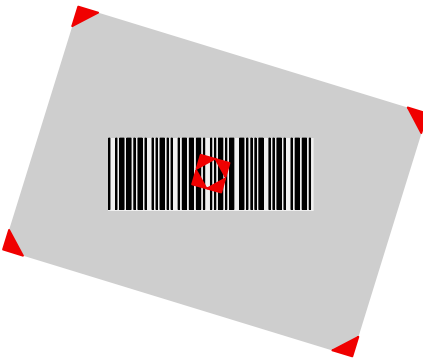


Figure 1 - Aiming System

When you pull the trigger a red beam illuminates the code. If the aiming system is centered and the entire symbology is within the aiming system, you will get a good read. The field of view changes size as you move the reader closer or farther away from the code.

Linear barcode



2D Matrix symbol



Figure 2 - Relative Size and Location of Aiming System Pattern

The field of view indicated by the aiming system will be smaller when the Gryphon™ D432/D432E is closer to the code and larger when it is farther from the code. Symbolologies with smaller bars or elements (mil size) should be read closer to the unit. Symbolologies with larger bars or elements (mil size) should be read farther from the unit. (See chapter 9 for further details).

### 3.2 NORMAL OPERATION

Gryphon™ D432/D432E normally functions by capturing and decoding codes.

Point the reader at the target and pull the trigger to enable the aiming system and the illuminator (red beam) to capture and decode the image. The aiming system will briefly switch off during the acquisition time and if no code is decoded will switch on again before the next acquisition. The illuminator will remain on until the symbol is decoded.

As you are reading code symbols, adjust the distance at which you are holding the reader.

The Aiming System Delay parameter can be used to set a delay between the activation of the aiming system and the activation of the illuminator. This allows more time to center the reader over the target before image acquisition.



**NOTE**

*The Gryphon™ D432/D432E hand-held reader aiming system is designed for general reading and decoding of 1D and 2D symbols. Some variation in reading distance will occur due to narrow bar width and other factors.*



**NOTE**

*If reading codes positioned on reflective surfaces, it may be necessary to tilt the reader with respect to the barcode and/or set the Camera Control parameters (see page 50).*

### 3.3 IMAGE CAPTURING

Gryphon™ D432/D432E can also function as a camera by capturing images of labels, signatures, and other items.

In order to capture an image, the user should read a Capture Image code (see page 73), then point at the image subject and pull the trigger. This way, the image will be captured and sent to the host PC. Gryphon™ D432/D432E then returns to



normal operation. To capture another image you must read another Capture Image Code of the same or a different Preset Configuration.

You can use the aiming system to position the reader from the object (ensure the reader is about centered over the target). Adjust the distance at which you are holding the reader (see Figure 2).

If the RS232 interface has been selected, the image will be transferred to the host PC via XMODEM\_1K protocol.

**NOTE**

*Image capturing is not available in Wedge and USB Keyboard Emulation interfaces and is not compatible with Autoscanning nor when the Software trigger type is selected.*

Up to four different and independent Image Presets can be defined (see page 74). For each Image Preset you may set up to three Basic Configuration Parameters, and up to five Advanced Configuration Parameters. Therefore an image is processed before being sent to the Host, according to a preset group of parameters.

### **3.3.1 Basic Configuration Parameters**

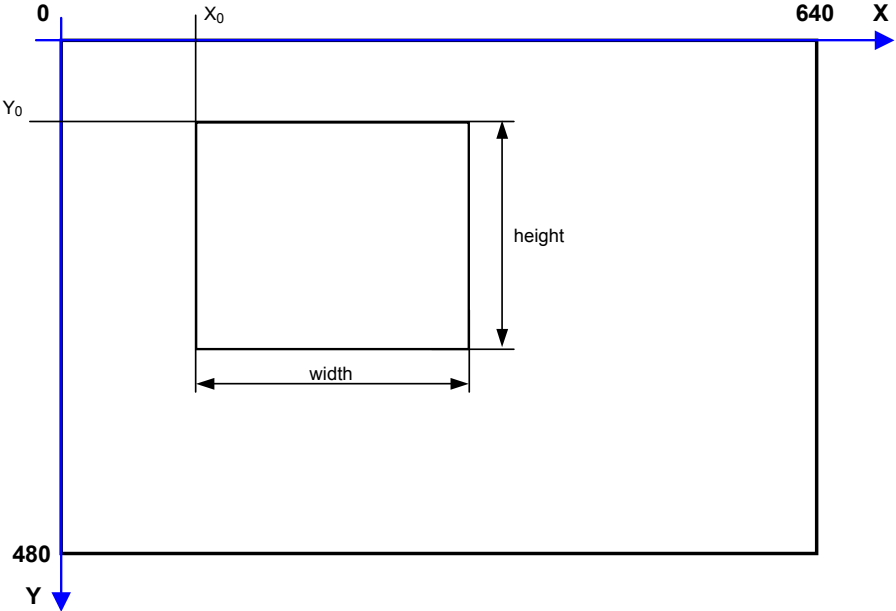
The Image file formats supported are: BMP, TIFF, JPEG (default).

Two resolution options are available: VGA Resolution (640 x 480 pixels) (default), and CIF Resolution (320 x 240 pixels). The lower resolution setting yields smaller file sizes, so the transfer time decreases.

For JPEG images it is possible to define the Image Quality level to address tradeoff between image file size and quality.

### 3.3.2 Advanced Configuration Parameters

An image portion (Window), instead of an entire image, can be captured. This parameter is generally used for particular fixed reading position applications.



An Image Window may either be as large as the image itself or smaller (10 x 10 pixels minimum), and is defined by its origin (the coordinate  $X_0$ ,  $Y_0$ ), its width (number of pixels along the X Axis) and its height (number of pixels along the Y Axis).

By default, for all Image Presets, the window has its origin coordinates equal to zero, its width equal to 640 pixels and its height to 480 pixels.

It is possible to perform Zooming of the image. The zoom range varies from 20% up to 200% in steps of 20%, so ten different settings are available. Default is 100% (no zoom).

In addition to Windowing and Zoom you can adjust Brightness and Contrast levels.

Brightness Adjustment is available in the range from -100% up to 100%, in steps of 1%. Positive values shift the luminance up so that the image will result brighter. Default value is 0%, meaning that no brightness adjustment is performed.

The same range of values (-100% up to 100%, in steps of 1%) is available for Contrast Adjustment. Positive values will increase the contrast, so that dark and

bright objects inside the image will be better distinguishable. Default value is 0%, which means that no contrast adjustment is performed.

You can set the Image Color Depth by selecting 256 gray levels (default), 16 gray levels, or 2 gray levels. Higher color depths yield larger image files. This option is ignored if the JPEG format is selected, (256 gray levels only).

## 3.4 AUTOSCANNING

### 3.4.1 Normal Mode

Gryphon™ D432/D432E provides an **autoscan** command (see page 70), which when enabled, causes the reader to scan continuously and to monitor the central zone of its reading area. In this way, Gryphon™ D432/D432E is ready to capture any image (containing a potential code) positioned on a uniform background.

The aiming system can be enabled to indicate the reading area of the potential code to be captured. The illumination system can also be enabled when the ambient light conditions are not sufficient to autodetect the potential code to be captured; furthermore, the illumination system increases in intensity for an instant when capturing and decoding an image. A safety time may be defined to prevent Gryphon™ D432/D432E from reading the same code repeatedly.

If the decoding is completed successfully, the reader starts monitoring the reading area again. In case of decoding failure, Gryphon™ D432/D432E keeps on decoding until a potential code is present in the central zone of the reading area.

### 3.4.2 Pattern Mode

The Autoscan pattern mode is particularly advised when reading barcodes positioned on a non-uniform background. In these cases Gryphon™ D432/D432E may perceive some elements of the background as barcodes and start the decoding. To avoid this undesired effect, the Autoscan Pattern Code is placed in the Gryphon™ D432/D432E reading area which prevents decoding. Using this code as the background, code reading takes place normally by presenting desired codes to be read over the Pattern Code. Between each code read, the Pattern Code must be represented to Gryphon™ D432/D432E.

The Pattern Code can be printed from the file of the manual (Appendix D) available on the CD-ROM.

In case of low ambient light conditions, Gryphon™ D432/D432E automatically activates the illumination system. If desired, the illumination system can be enabled so that it is always active.

### 3.4.3 Stand Autorecognition

Pair the reader to the stand paying attention to insert the handle into the stand clip. Correct insertion will be signaled by a beep; then, the reader will be ready to read barcodes. Read the configuration codes at page 70 to automatically enter in Normal or Pattern Autoscanning mode.

## 3.5 CAMERA CONTROL

### Exposure and Calibration

Two different control modes are available for managing the camera: automatic mode and fixed mode.

The automatic mode provides three different options to get the best tuning of the image to be captured:

- Automatic based on entire image: camera control mode based on the analysis of the whole image. This mode works well in most standard applications. It is the default setting.
- Automatic based on central image: camera control mode based on the analysis of a restricted area positioned in the central zone of the image. This mode is suggested when reading small codes positioned in a dark and extensive background.
- Automatic for highly reflective surfaces: camera control mode allowing to read codes on highly reflective surfaces. This mode is suggested, for example, when reading codes positioned on plastic or metal surfaces.

The fixed mode is particularly suggested for expert users. It requires a camera calibration to adjust the acquisition parameters to the ambient light conditions. The defined values will always be used when working with a fixed exposure.

These values are permanently saved in the reader memory.

Refer to page 50 for configuration codes.

### Aiming System Calibration

The factory-defined Gryphon™ D432/D432E aiming system is already correctly and precisely calibrated to the Gryphon™ D432/D432E focus distance and therefore works for the most typical applications. However, it is possible to modify the aiming system precision for the following condition:

when a fixed reading distance **different** from the Gryphon™ D432/D432E focus distance is used. The Gryphon™ focus distance is 115 mm for Gryphon™ D432, and 65 mm for Gryphon™ D432E.

Refer to the VisualSetup software program for performing the aiming system calibration.

### 3.6 DEFINING DATA FORMATTING

The string of a decoded code to be sent to the host may be formatted as follows:

- defining simple **data formatting** (see page 40);
- defining **advanced data formatting** giving complete flexibility in changing the format of data (see par. 5.3).

When both simple and advanced data formatting are selected the info is processed in the following order:

1. the string of the decoded code is processed according to the advanced formatting rules;
2. the resulting string is processed according to the selection type rules of the simple data formatting;
3. character substitution is performed on the resulting string;
4. character deletion is performed on the resulting string;
5. code concatenation is performed;
6. code ID is attached to the resulting string;
7. global headers and terminators are attached to the resulting string;

The codes to be sent to the host may also be selected or ordered depending on the following two conditions:

- **one code per scan**: Gryphon™ D432/D432E sends the code being closest to the image center. If the "Central Code Transmission" command is enabled, only the code containing the image center will be transmitted (see page 69);
- **all codes per scan**: the codes to be sent to the host may be ordered either by length or by symbology starting from the code being closest to the image center (see page 69). When enabling both these criteria, codes belonging to the same symbology are sent to the host depending on their length.

### 3.6.1 Concatenation

It is possible to concatenate up to 4 different codes, set their length and enable the intercode delay between them (the intercode delay is set in the specific interface parameters, see page 25, 27 and 32). When enabling the delay one or more global headers and terminators are added to the decoded data. The concatenation procedure may occur in different ways depending on the number of codes to be decoded per image:

#### One Code Per Scan

- If the code resulting from the single decoding of an image belongs to one of the code families to be concatenated, it is saved to the Gryphon™ D432/D432E memory waiting for other codes to complete the concatenation.
- If the code belongs to the same family of a code previously saved, it overwrites the old one.
- If the code resulting from the decoding does not belong to one of the code families to be concatenated, it causes the concatenation failure and clears the temporary memory. If the "Concatenation Failure Transmission" command is set to "Tx codes causing failure" (see page 48), this code will be sent in the output message.

#### All Codes Per Scan

- All codes resulting from the decoding of an image and belonging to one of the families to be concatenated are saved to the Gryphon™ D432/D432E memory waiting for other codes to complete the concatenation.
- If one or more codes resulting from the decoding belong to the same family of codes previously saved, they overwrite the old ones.
- When the image contains no code to be concatenated, the concatenation fails and the reader temporary memory is cleared. If the "Concatenation Failure Transmission" command is set to "Tx codes causing failure" (see page 48), the codes causing the concatenation failure will be sent in the output message.

## 4 INITIAL SETUP

---

This procedure allows setting up the reader to operate with the default settings:

Whenever you need to change the default values refer to par. 5.2.

### 4.1 RS232 INTERFACE SELECTION

The Gryphon™ D432/D432E reader requires the RS232 interface cable and the AC/DC power adapter to be connected.

To install and configure your reader with the RS232 interface, follow these instructions:

1. Make all system connections as shown in Figure 3:



**Figure 3 - RS232 Connection**

2. Read the restore default parameter code below:

Restore Default



3. Read the RS232 interface selection code:

RS232



4. Power up your PC.

RS232 is the default interface set at the factory.

## 4.2 WEDGE INTERFACE SELECTION

The Gryphon™ D432/D432E reader requires the Wedge interface cable.

To install and configure your reader with the Wedge interface, follow these instructions:

1. Connect the cable to the Gryphon™ D432/D432E reader and to the PC as shown in Figure 4. Power up your PC.



Figure 4 – Wedge Connections

2. Read the restore default parameter code below:

Restore Default



3. Read the Wedge IBM AT interface selection code:

Wedge – IBM AT





### 4.3 USB INTERFACE SELECTION

The Gryphon™ D432/D432E reader requires the USB interface cable (CAB-412) and, if required, the AC/DC power adapter to be connected.

The USB interface is compatible:

Windows 98 (and later)

IBM POS for Windows

Mac OS 8.0 (and later)

4690 Operating System

### START-UP

As with all USB devices, upon connection, the Host performs several checks by communicating with the Gryphon™ D432/D432E. During this phase the green LED on the Gryphon™ D432/D432E reader blinks and normal operations are suspended. Two basic conditions must be met before Gryphon™ D432/D432E is ready to read codes: the correct USB driver must be loaded and sufficient power must be supplied to the reader.

For all systems, the correct USB driver for the default USB-KBD interface or the USB Generic HID interface is included in the Host Operating System and will either be loaded automatically or will be suggested by the O.S. and should therefore be selected from the dialog box (the first time only).

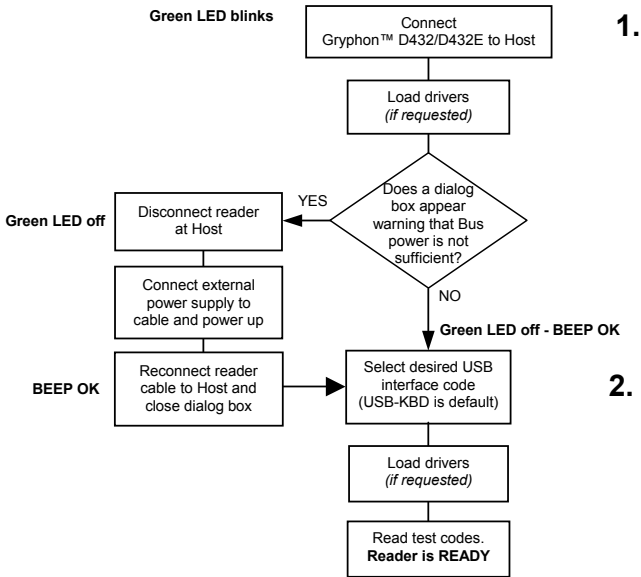
If the Host supplies sufficient power to the reader, the start-up phase ends correctly, the green LED stops blinking and the reader emits the beep OK signal.

If the Host does not supply sufficient power to the reader, a dialog box will appear on the Host and the reader will be blocked (green LED continues blinking). In this case, disconnect the USB cable at the Host (green LED stops blinking), connect and power-up an external supply to USB cable then reconnect the USB cable to the Host and close the dialog box. The reader emits the beep OK signal. You can now read codes. At this point you can read the USB interface configuration code according to your application. Load drivers from the O.S. (if requested).

When configuring the USB-COM interface or DLBulkUSB interface, the relevant files and drivers must be installed and can be downloaded from the web site <http://www.scanning.datalogic.com>.

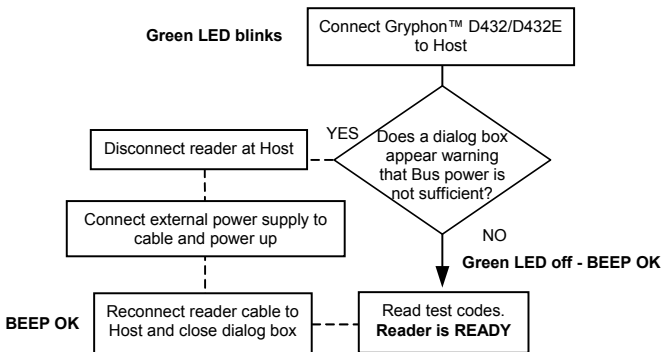
The reader is ready.

## FIRST START-UP



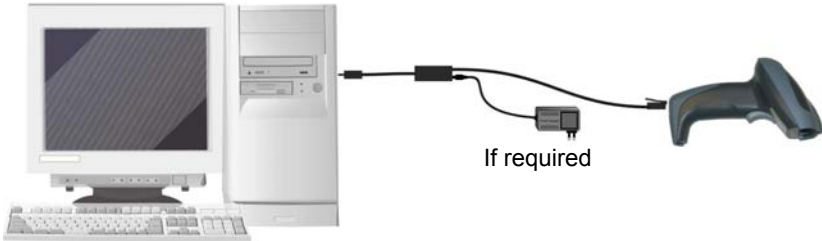
Successive start-ups will automatically recognize the previously loaded drivers. If external power is used, verify that external power is already supplied.

## SUCCESSIVE START-UPS



To install and configure your reader with one of the USB interfaces, see the "First Start-up" diagram and follow these instructions.

1. Make all the Gryphon™ D432/D432E reader connections as shown in Figure 5.  
Power up your PC.



**Figure 5 – USB Connections**

2. Read the desired USB interface selection code:

USB-COM EMULATION



USB-KBD EMULATION



USB BULK



USB Generic HID



## 5 CONFIGURATION USING CODE SYMBOLS

---

This section describes the programming method of using configuration code symbols to program your reader. By using the Gryphon™ D432/D432E reader to read/decode these special configuration symbols, you can configure, and obtain information from its system software.

When you are reading configuration code symbols, carefully aim the Gryphon™ D432/D432E 2D reader to avoid reading adjacent symbols.

**The configuration code symbols in this chapter are divided into logical sections according to the type of configuration required, (RS232 configuration, Code selection, etc.). If arguments are required with a command, you can read additional code labels (typically digits) from Appendix D.**

### To configure your reader:

1. Read the **Enter Configuration** code ONCE, available on top of each page.
2. Modify the desired parameters in one or more sections by reading the parameter code and selecting the value from the Hex/Numeric table (see Appendix D) or by following the given procedures.
3. Read the **Exit and Save Configuration** code ONCE, available on top of each page.

### Example for step 3:

To set the maximum length of characters in a Code 39 barcode symbol that the reader will decode to 32:

- first read the Maximum Length symbol for Code 39 on page 53
- then read the symbol for the digit "3" and lastly the symbol for the digit "2" in Appendix D.

## 5.1 DEFAULT SETTINGS

Configuration Field	Default Setting
<b>RS232 Communication</b> Baud Rate Parity, Data Bits, Stop Bits Handshake ACK/NACK Protocol FIFO Intercharacter Delay Intercode Delay	115200 No parity; 8 Data bits; 1 Stop bit None None Enabled 0 0
<b>USB COM Emulation</b> Handshake ACK/NACK Protocol FIFO Intercharacter Delay Intercode Delay	None None Enabled 0 0
<b>USB Keyboard Emulation</b> FIFO Intercharacter Delay Intercode Delay *Keyboard Nationality *Keyboard Speed	Enabled 0 0 USA Normal
<b>WEDGE-Communication</b> *Keyboard Nationality CapsLock CapsLock Auto-Recognition NumLock Intercharacter Delay Intercode Delay	USA OFF ON OFF 0 0
<b>Data Format-Symbology Independent Parameters</b> Code Identifier Custom Code Identifier Code Length *Header *Terminator	Disabled Disabled Disabled No headers CR and LF terminators for RS232, USB BULK, USB COM, USB Generic HID ENTER terminator for Wedge, USB Keyboard

\* The default values of these parameters are set when reading the interface selection.

Configuration Field	Default Setting
<b>Data Format-Symbology Dependent Parameters</b> Symbology Specific Format Symbology Headers Symbology Terminators Symbology Character Substitution Symbology Character Deletion	Select All No headers No terminators No character to substitute No character to delete
<b>Data Format-Concatenation</b> Concatenation Define Concatenation Set First Concatenated Code Length Set Second Concatenated Code Length Set Third Concatenated Code Length Set Fourth Concatenated Code Length Concatenation with Intercode Delay Concatenation Timeout Concatenation Failure Transmission Transmission after Timeout Concatenation Result Code ID	Disabled 2 EAN/UPC codes concatenated 000 = any length 000 = any length 000 = any length 000 = any length Disabled 10 seconds Tx codes causing failure No code transmission No code Identifier
<b>Advanced Formatting</b> Format enable/disable	Disabled
<b>Camera Control</b> Exposure Mode	Automatic, based on entire image
<b>Code Selection</b> Issue Identical Codes	Enabled
<b>EAN/UPC/JAN</b> Selection Add-On UPCE Expansion	Enabled Disabled Disabled
<b>Code 39</b> Selection Code39 Full ASCII Code Length Check Minimum Length Maximum Length Start/Stop Character	Enabled - no check digit Disabled Disabled 001 255 Disabled

<b>Configuration Field</b>	<b>Default Setting</b>
<b>Code 32</b> Selection	Disabled
<b>Interleaved 2 of 5</b> Selection Code Length Check Minimum Length Maximum Length	Enabled - check digit control and tx Disabled 014 255
<b>Codabar</b> Selection Code Length Check Minimum Length Maximum Length	Disabled Disabled 001 255
<b>Code 128</b> Code128 Selection Code Length Check Minimum Length Maximum Length	Enabled Disabled 001 255
<b>EAN 128</b> Selection Code Length Check Minimum Length Maximum Length	Disabled Disabled 001 255
<b>Code 93</b> Selection Code Length Check Minimum Length Maximum Length	Disabled Disabled 001 255
<b>RSS Family</b> RSS Expanded RSS Limited RSS 14 RSS Expanded Stacked RSS 14 Stacked	Disabled Disabled Disabled Disabled Disabled
<b>PDF417</b> Selection Option Micro PDF417	Enabled Macro PDF417 Buffered Mode Disabled

Configuration Field	Default Setting
<b>Data Matrix</b> Selection Rectangular Style Minimum Code Length Maximum Code Length	Enabled - normal & inverted Enabled 0001 3600
<b>QR</b> Selection	Enabled
<b>Postal Codes</b> Selection	Disabled
<b>Maxicode</b> Maxicode Mode 1 Maxicode Mode 2 Maxicode Mode 3 Maxicode Mode 4 Maxicode Mode 5 Maxicode Mode 6	Disabled Disabled Disabled Disabled Disabled Disabled
<b>Composite Codes</b> Selection Discard Linear Part	Disabled Enabled
<b>Reading Parameters</b> Trigger Mode Trigger Type Flash ON Flash OFF Beeper Tone Beeper Volume Beeper Duration Reads per Cycle Scan Timeout Aiming System Delay Good Read Spot User Defined Beeper Tone User Defined Beeper Volume User Defined Beeper Duration Codes per Scan Central Code Transmission Order by Code Length Order by Code Symbology Autoscan Mode Autoscan Aiming System	Trigger level Normal trigger 2 sec 2 sec Tone 1 High volume 50 ms One read per cycle 5 sec Disabled Disabled Tone 1 High Volume 100 ms One code per scan Enabled Disabled Disabled Disabled Enabled



Configuration Field	Default Setting
<p><b>Reading Parameters (continued)</b>                      Autoscan Hardware Trigger                      Autoscan Illumination System                      Stand Autoscan Mode                      Safety Time</p>	<p>Enabled                      Disabled                      Normal                      500 ms (if Autoscan mode or Software trigger type is selected and the Multiple Reads per Cycle option is enabled).</p>
<p><b>Image Formatting</b>  <b>Image Preset 1, 2, 3, 4</b>                      Image Format                      Resolution                      Set JPEG Quality Factor                      Window Origin                      Window Dimensions                      Brightness                      Contrast                      Zoom                      Color Depth</p>	<p>JPEG format                      Full (640x480)                      50                      (0,0)                      (640x480)                      0%                      0%                      100%                      256 gray levels</p>

## 5.2 CHANGING DEFAULT SETTINGS

Once the reader is setup, you can change the default parameters to meet your application needs. Refer to the preceding paragraphs for initial configuration in order to set the default values and select the interface for your application.

In this manual, the configuration parameters are divided into logical groups making it easy to find the desired function base on its reference group.

The **RS232**, **USB**, **WEDGE** groups are for Standard Interface parameter configuration.

The following parameter groups are common to all interface applications:

- **DATA FORMAT** parameters regard the messages sent to the Host system.
- **CAMERA CONTROL** parameters regard the control mode managing the camera.
- **CODE SELECTION** parameters allow configuration of a personalized mix of codes, code families and their options.
- **READING PARAMETERS** control various operating modes and indicators status functioning.
- **CAPTURE IMAGE** parameters activate image capturing.
- **ADVANCED IMAGE CAPTURE** parameters define options of the image to capture.
- **ADVANCED DATA FORMAT** parameters allow advanced formatting of messages towards the Host.



---

# RS232 INTERFACE

---

## *BAUD RATE*

1200 baud



2400 baud



4800 baud



9600 baud



14400 baud



19200 baud



38400 baud



57600 baud



115200 baud



Enter Gun Configuration



RS232

Exit and Save Gun Configuration



---

***PARITY***

None



Odd



Even



---

***DATA BITS***

7 Bits



8 Bits



---

***STOP BITS***

1 Bit



2 Bits



---

***ACK/NACK PROTOCOL***

Disabled



Enabled



See par. 6.1.1 for details.

Enter Gun Configuration



Exit and Save Gun Configuration



**RS232**

---

***RX TIMEOUT***

RX Timeout



Read a number in the range  
**00-99**, where:  
00 = disabled  
01-99 = timeout from 1 to 99 secs

See par. 6.1.2 for details.

---

***HANDSHAKE***

None



XON/XOFF



RTS/CTS



---

***FIFO***

Disabled



Enabled



---

***INTERCHARACTER DELAY***

Intercharacter Delay



00 = disabled  
01-99 = delay from 1 to 99 msec

---

***INTERCODE DELAY***

Intercode Delay



00 = disabled  
01-99 = delay from 1 to 99 sec

Enter Gun Configuration



USB

Exit and Save Gun Configuration



---

# USB

---

## *USB COM Emulation*

---

### *HANDSHAKE*

None



XON/XOFF



RTS/CTS



---

### *ACK/NACK PROTOCOL*

Disabled



Enabled



See par. 6.1.1 for details.

---

### *FIFO*

Disabled



Enabled



Enter Gun Configuration



Exit and Save Gun Configuration



USB

---

### *INTERCHARACTER DELAY*

Intercharacter Delay



00 = disabled  
01-99 = delay from 1 to 99 msec

---

### *INTERCODE DELAY*

Intercode Delay



00 = disabled  
01-99 = delay from 1 to 99 sec

---

### *RX TIMEOUT*

RX Timeout



Read a number in the range  
**00-99**, where:  
00 = disabled  
01-99 = timeout from 1 to 99 secs

See par. 6.1.2 for details.

Enter Gun Configuration



USB

Exit and Save Gun Configuration



---

## ***USB Keyboard Emulation***

---

### ***FIFO***

Disabled



Enabled



---

### ***INTERCHARACTER DELAY***

Intercharacter Delay



00 = disabled

01-99 = delay from 1 to 99 msec

---

### ***INTERCODE DELAY***

Intercode Delay



00 = disabled

01-99 = delay from 1 to 99 sec



Enter Gun Configuration



Exit and Save Gun Configuration



USB

---

***KEYBOARD NATIONALITY***

This parameter default value is restored through the Interface Selection code and not Restore Default.

Belgian



English



French



German



Italian



Japanese



Spanish



Swedish



USA



Enter Gun Configuration



Exit and Save Gun Configuration



USB

---

***KEYBOARD SPEED***

This parameter default value is restored through the Interface Selection code and not Restore Default.

Normal



Fast



See par. 6.2.1 for details.

Enter Gun Configuration



## WEDGE

Exit and Save Gun Configuration



---

# WEDGE INTERFACE

---

## *CAPS LOCK*

Caps Lock Off



Caps Lock On



---

## *CAPS LOCK AUTO-RECOGNITION*

Disabled



Enabled



**Note:** Caps lock manual configuration is ignored when Caps Lock Auto-Recognition is enabled

---

## *NUM LOCK*

Num Lock Off



Num Lock On



---

## *INTERCHARACTER DELAY*

Intercharacter Delay



00 = disabled

01-99 = delay from 1 to 99 msec

Enter Gun Configuration



Exit and Save Gun Configuration



## WEDGE

---

### *INTERCODE DELAY*

Intercode Delay



00 = disabled  
01-99 = delay from 1 to 99 sec

---

### *KEYBOARD NATIONALITY*

This parameter default value is restored through the Interface Selection code and not Restore Default.

Belgian



English



French



German



Italian



Japanese



Spanish



Swedish



Enter Gun Configuration



Exit and Save Gun Configuration



WEDGE

USA



---

## ***KEYBOARD SETTING***

The values set by this procedure are not effected by the Restore Default code but will be lost if the Interface Selection code is read.

Set Alphanumeric Keys



The reader can be used with terminals or PCs with various keyboard types and nationalities through a simple keyboard setting procedure.

Keyboard setting consists of communicating to the reader how to send data corresponding to the keyboard used in the application. The keys must be set in a specific order.

Press and release a key to set it.

Some characters may require more than one key pressed simultaneously during normal use (refer to the manual of your PC or terminal for keyboard use). The exact sequence must be indicated to the reader in this case pressing and releasing the different keys.

### **Example:**

If one has to press the "Shift" and "4" keys simultaneously on the keyboard to transmit the character "\$" to the video, to set the "\$", press and release "Shift" then press and release "4".

Each pressed and released key must generate an acoustic signal on the reader, otherwise repress the key. Never press more than one key at the same time, even if this corresponds to the normal use of your keyboard.

**Press "Backspace" to correct a wrong key entry. In this case the reader emits a wrong beep.**

**Note: "CAPS LOCK" and "NUM LOCK" must be off before starting the keyboard setting procedure. "SHIFT" must be repressed for each character and cannot be substituted by "CAPS LOCK".**

1. Read the "Set Alphanumeric Keys" code.
2. Press the keys shown in the following table according to their numerical order:

## WEDGE

---

Some ASCII characters may be missing as this depends on the type of keyboard: these are generally particular characters relative to the various national symbologies. In this case:

- **The first 4 characters (Shift, Alt, Ctrl, and Backspace) can only be substituted with keys not used, or substituted with each other.**
- Characters can be substituted with other single symbols (e.g. "SPACE") even if not included in the barcode set used.
- Characters can be substituted with others corresponding to your keyboard.

**The reader signals the end of the procedure with 3 beeps indicating the keys have been registered.**

01 : Shift		
02 : Alt		
03 : Ctrl		
04 : Backspace		
05 : SPACE	28 : 7	51 : N
06 : !	29 : 8	52 : O
07 : "	30 : 9	53 : P
08 : #	31 : :	54 : Q
09 : \$	32 : ;	55 : R
10 : %	33 : <	56 : S
11 : &	34 : =	57 : T
12 : '	35 : >	58 : U
13 : (	36 : ?	59 : V
14 : )	37 : @	60 : W
15 : *	38 : A	61 : X
16 : +	39 : B	62 : Y
17 : ,	40 : C	63 : Z
18 : -	41 : D	64 : [
19 : .	42 : E	65 : \
20 : /	43 : F	66 : ]
21 : 0	44 : G	67 : ^
22 : 1	45 : H	68 : _ (underscore)
23 : 2	46 : I	69 : `
24 : 3	47 : J	70 : {
25 : 4	48 : K	71 :
26 : 5	49 : L	72 : }
27 : 6	50 : M	73 : ~
		74 : DEL

## WEDGE

---

### **Acoustic Signals**

Four types of acoustic signals are associated with the following steps:

1. Enter keyboard setup
2. Exit keyboard setup
3. SHIFT, ALT, CTRL, BACKSPACE keys
4. Keyboard keys (SHIFT, ALT, CTRL, BACKSPACE excluded)

These signals facilitate the selection of those characters requiring more than one key pressed simultaneously.

### **Example**

The transmission of the "%" character implies two different steps:

1. Press the SHIFT key
2. Press the "5" key

The different tones produced by the reader indicate that both steps have been successful and that the character has been transmitted.

## WEDGE

---

### *EXTENDED HEADER/TERMINATOR KEYS*

For the WEDGE interface, the following extended keyboard values can also be configured:

These values are restored through the Interface Selection code and not Restore Default.

<b>EXTENDED KEYBOARD TO HEX CONVERSION</b>	
	<b>IBM AT</b>
<b>HEX</b>	<b>KEY</b>
<b>83</b>	ENTER
<b>84</b>	TAB
<b>85</b>	F1
<b>86</b>	F2
<b>87</b>	F3
<b>88</b>	F4
<b>89</b>	F5
<b>8A</b>	F6
<b>8B</b>	F7
<b>8C</b>	F8
<b>8D</b>	F9
<b>8E</b>	F10
<b>8F</b>	F11
<b>90</b>	F12
<b>91</b>	HOME
<b>92</b>	END
<b>93</b>	PG UP
<b>94</b>	PG DOWN
<b>95</b>	↑
<b>96</b>	↓
<b>97</b>	←
<b>98</b>	→
<b>99</b>	ESC
<b>9A</b>	CTRL (Right)
<b>9B</b>	Euro



**WEDGE**

---

***SET CUSTOM EXTENDED HEADER/TERMINATOR KEYS***

Set Extended Keys



The extended Header/Terminator keys for **Wedge Interface users** can be customized by defining them through a simple keyboard setting procedure.

For example, the Numeric Keypad keys can be set for use as Headers or Terminators by substituting the default extended keys during this procedure.

Press and release a key to set it.

Some characters may require more than one key pressed simultaneously during normal use (refer to the manual of your PC or terminal for keyboard use). The exact sequence must be indicated to the reader in this case pressing and releasing the different keys.

**Example:**

If one has to press the "Shift" and "4" keys simultaneously on the keyboard to transmit the character "\$" to the video, to set the "\$", press and release "Shift" then press and release "4".

Each pressed and released key must generate an acoustic signal on the reader, otherwise repress the key. Never press more than one key at the same time, even if this corresponds to the normal use of your keyboard.

**Press "Backspace" to correct a wrong key entry. In this case the reader emits a wrong beep.**

**Note: "CAPS LOCK" and "NUM LOCK" must be off before starting the keyboard setting procedure. "SHIFT" must be repressed for each character and cannot be substituted by "CAPS LOCK".**

1. Read the "Set Extended Keys" code.
2. Press the first 4 keys indicated in the following table.
3. Define all keys from 5 to 28 in the following table.

## WEDGE

If the first 4 KEYS (Shift, Alt, Ctrl, and Backspace) are not available on your keyboard, you can only substitute them with keys not used, or substitute them with each other.

The reader signals the end of the procedure with 3 beeps indicating the keys have been registered.

CUSTOM EXTENDED KEYBOARD SETTING TABLE		
		Custom
Order	HEX	KEY
01	-	Shift
02	-	Alt
03	-	Ctrl
04	-	Backspace
05	83	
06	84	
07	85	
08	86	
09	87	
10	88	
11	89	
12	8A	
13	8B	
14	8C	
15	8D	
16	8E	
17	8F	
18	90	
19	91	
20	92	
21	93	
22	94	
23	95	
24	96	
25	97	
26	98	
27	99	
28	9A	

## WEDGE

---

### **Acoustic Signals**

Four types of acoustic signals are associated with the following steps:

1. Enter keyboard setup
2. Exit keyboard setup
3. SHIFT, ALT, CTRL, BACKSPACE keys
4. Keyboard keys (SHIFT, ALT, CTRL, BACKSPACE excluded)

These signals facilitate the selection of those characters requiring more than one key pressed simultaneously.

### **Example**

The transmission of the "%" character implies two different steps:

1. Press the SHIFT key
2. Press the "5" key

The different tones produced by the reader indicate that both steps have been successful and that the character has been transmitted.



---

**DATA FORMAT**

---

# DATA FORMAT

The Data Format parameters can be restored to their default values using the following methods:

- 1) the general “Restore Default” code restores all the configuration parameter groups including Data Format to their default values, with the exception of the Symbology Independent Header and Terminator selections;
- 2) the “Data Format Default” code restores all the Data Format configuration parameters to their default values, with the exception of the Symbology Independent Header and Terminator selections;
- 3) the Symbology Independent Header and Terminator parameters are set to their default values when reading the interface selection code;
- 4) the “Symbology Specific Format Default” code restores only the configuration parameters of the specific symbology indicated by the Code Identifier code in Appendix C.

---

***DATA FORMAT DEFAULT***

Data Format Default



---

## ***Symbology Independent Parameters***

---

---

***CODE IDENTIFIER***

---

Disabled



Custom Code ID



Enter Gun Configuration



Exit and Save Gun Configuration



---

## DATA FORMAT

---

AIM Standard Code ID



---

## *CUSTOM CODE IDENTIFIER*

Custom Code Identifier



1. Select a Datalogic Standard Code Identifier from the Code Identifier Table in Appendix C.
2. Set the number of characters in the range **0-3**, where **0** = Code ID disabled.
3. Read the corresponding characters as Hex values from the Hex/Numeric table. Valid values are in the range **00-7F**.

---

## *CODE LENGTH*

Disabled



Enabled



---

## *SET HEADERS*

Set Headers



1. Set the number of characters in the range **00-10**.
2. Read the corresponding characters as Hex values from the Hex/Numeric table. Valid values are in the range:  
**00-7F** for RS232, USB BULK, USB COM, USB Generic HID  
**00-9B** for Wedge and USB Keyboard
3. Read the following code to enable the configuration you have set.

Enter Gun Configuration



Exit and Save Gun Configuration



---

## DATA FORMAT

---

### *HEADERS*

Disabled



Enabled



---

### *SET TERMINATORS*

Set Terminators



1. Set the number of characters in the range **00-10**.
2. Read the corresponding characters as Hex values from the Hex/Numeric table. Valid values are in the range:  
**00-7F** for RS232, USB BULK, USB COM, USB Generic HID  
**00-9B** for Wedge and USB Keyboard
3. Read the following code to enable the configuration you have set.

---

### *TERMINATORS*

Disabled



Enabled



**DATA FORMAT**

# *Symbology Dependent Parameters*

The “Symbology Specific Format Default” code on page 46 allows restoring the symbology dependent parameters related to a specific code family to the default values.

## ***SYMBOLGY SPECIFIC FORMAT***

Symbology Specific Format



1. Select a Datalogic Standard Code Identifier from the Code Identifier Table in Appendix C.
2. Formatting:
  - 0 = select all - Step 3
  - 1 = select right - followed by Step 3
  - 2 = select left - followed by Step 3
  - 3 = select middle - followed by a number in the range **000-999** for the starting character and then, by Step 3
  - 4 = discard right - followed by Step 3
  - 5 = discard left - followed by Step 3
  - 6 = discard middle - followed by a number in the range **000-999** for the starting character and then, by Step 3
3. Set the number of characters to select/discard in the range **000-999**.

## ***SYMBOLGY HEADERS***

Symbology Headers



1. Select a Datalogic Standard Code Identifier from the Code Identifier Table in Appendix C.
2. Set the number of characters in the range **0-5**.
3. Read the corresponding characters as Hex values from the Hex/Numeric table. Valid values are in the range: **00-7F** for RS232, USB BULK, USB COM, USB Generic HID  
**00-9B** for Wedge and USB Keyboard
4. Read the following code to enable the configuration you have set.

**DATA FORMAT*****HEADERS***

## Headers



1. Select a Datalogic Standard Code Identifier from the Code Identifier Table in Appendix C.
2. 0 = disabled  
1 = enabled

***SYMBOLGY TERMINATORS***

## Symbology Terminators



1. Select a Datalogic Standard Code Identifier from the Code Identifier Table in Appendix C.
2. Set the number of characters in the range **0-5**.
3. Read the corresponding characters as Hex values from the Hex/Numeric table. Valid values are in the range:  
**00-7F** for RS232, USB BULK, USB COM, USB Generic HID  
**00-9B** for Wedge and USB Keyboard
4. Read the following code to enable the configuration you have set.

***TERMINATORS***

## Terminators



1. Select a Datalogic Standard Code Identifier from the Code Identifier Table in Appendix C.
2. 0 = disabled  
1 = enabled





## DATA FORMAT



### *SYBOLOGY CHARACTER SUBSTITUTION*

#### Symbology Character Substitution



1. Select a Datalogic Standard Code Identifier from the Code Identifier Table in Appendix C.
2. Read the corresponding character as Hex value from the Hex/Numeric table which identifies the character to be substituted. Valid value is in the range **00-7F**.
3. Read the corresponding character as Hex value from the Hex/Numeric table which identifies the new substituting character. Valid value is in the range **00-7F**.
4. Read the following code to enable the configuration you have set.

### *CHARACTER SUBSTITUTION*

#### Character Substitution



1. Select a Datalogic Standard Code Identifier from the Code Identifier Table in Appendix C.
2. 0 = disabled  
1 = enabled

### *SYBOLOGY CHARACTER DELETION*

#### Symbology Character Deletion



1. Select a Datalogic Standard Code Identifier from the Code Identifier Table in Appendix C.
2. Read the corresponding character as Hex value from the Hex/Numeric table which identifies the character to be deleted. Valid value is in the range **00-7F**.
3. Read the following code to enable the configuration you have set.



## DATA FORMAT

### *CHARACTER DELETION*

Character Deletion



1. Select a Datalogic Standard Code Identifier from the Code Identifier Table in Appendix C.
2. 0 = disabled  
1 = enabled

### *SYBOLOGY SPECIFIC FORMAT DEFAULT*

Symbology Specific Format  
Default



Select a Datalogic Standard Code Identifier from the Code Identifier Table in Appendix C.

## *Concatenation*

### *DEFINE CONCATENATION*

Define Concatenation



1. Select the number of codes to concatenate in the range **2-4**.
2. Select the Datalogic Standard Code Identifier for each code to concatenate (repeat for same code types) from the table in Appendix C.
3. Read the following Code to enable the configuration you have set.

### *CONCATENATION ENABLE/DISABLE*

Disabled



Enabled



DATA FORMAT



---

## Concatenation Options

---

---

### *FIRST CONCATENATED CODE LENGTH*

Set First Concatenated Code  
Length



Read the number in the range  
**000-255.**  
**000** = any code length

---

### *SECOND CONCATENATED CODE LENGTH*

Set Second Concatenated Code  
Length



Read the number in the range  
**000-255.**  
**000** = any code length

---

### *THIRD CONCATENATED CODE LENGTH*

Set Third Concatenated Code  
Length



Read the number in the range  
**000-255.**  
**000** = any code length

---

### *FOURTH CONCATENATED CODE LENGTH*

Set Fourth Concatenated Code  
Length



Read the number in the range  
**000-255.**  
**000** = any code length

Enter Gun Configuration



Exit and Save Gun Configuration



## DATA FORMAT

---

### *CONCATENATION WITH INTERCODE DELAY*

Disabled



Enabled



This parameter is enabled with concatenation activated (see par. 3.6.1 for details).

---

### *CONCATENATION FAILURE TRANSMISSION*

TX Codes Causing Failure



No Code TX



See par. 3.6.1 for details

---

### *CONCATENATION TIMEOUT*

Concatenation Timeout



05-99 = timeout from 5 to 99 seconds.

---

### *TRANSMISSION AFTER TIMEOUT*

No Code Transmission



First Code Transmission



Second Code Transmission



Third Code Transmission



Enter Gun Configuration



Exit and Save Gun Configuration



## DATA FORMAT

---

### *CONCATENATION RESULT CODE ID*

No Code Identifier



Use First Code Identifier



Use Second Code Identifier



Use Third Code Identifier



Use Fourth Code Identifier





---

# CAMERA CONTROL

---

## *EXPOSURE MODE*

Fixed



Automatic (Entire Image)



Automatic (Central Part of Image)



Automatic for Highly  
Reflective Surfaces



See par. 3.5 for details.

---

## *CAMERA CALIBRATION*

Calibrate



Calibrates the correct exposure parameter values when using fixed exposure. The parameters defined will be permanently saved in the reader memory (see par. 3.5 for details).

Enter Gun Configuration



## CODE SELECTION Linear Symbologies

Exit and Save Gun Configuration



---

# CODE SELECTION

Disable All Symbologies



Disable All Linear Symbologies



Disable All 2D Symbologies



---

## *ISSUE IDENTICAL CODES*

Disabled



Enabled



See par. 6.3.1 for details.

Enter Gun Configuration



Exit and Save Gun Configuration



**CODE SELECTION  
Linear Symbologies**

***Linear Symbologies***

***UPC/EAN/JAN FAMILY***

EAN/UPC/JAN Disabled



EAN/UPC/JAN Enabled



Add-On Disabled



Add-On Enabled



UPCE Expansion Disabled



UPCE Expansion Enabled



***CODE 39 FAMILY***

Code 39 Std - Disabled



Code 39 Std - No Check Digit  
Control



Code 39 Std - Check Digit Control  
without Transmission



Code 39 Std - Check Digit Control  
and Transmission





Enter Gun Configuration



## CODE SELECTION Linear Symbologies

Exit and Save Gun Configuration



Code 39 Full ASCII - Disabled



Code 39 Full ASCII- Enabled



Code Length Check - Disabled



Code Length Check - Enabled



Minimum Code Length



Read the number in the range  
**001-255.**

Maximum Code Length



Read the number in the range  
**001-255.**

Start-Stop Character  
Transmission - Disabled



Start-Stop Character  
Transmission - Enabled



## *CODE 32 FAMILY*

Disabled



Enabled



Enter Gun Configuration



## CODE SELECTION Linear Symbologies

Exit and Save Gun Configuration



---

### *INTERLEAVED 2 OF 5 FAMILY*

Disabled



Enabled - No Check Digit  
Control



Enabled - Check Digit Control  
and without Transmission



Enabled - Check Digit Control  
and Transmission



Code Length Check - Disabled



Code Length Check - Enabled



Minimum Code Length



Read the number in the range  
**001-255.**

Maximum Code Length



Read the number in the range  
**001-255.**

Enter Gun Configuration



**CODE SELECTION  
Linear Symbologies**

Exit and Save Gun Configuration



---

***CODABAR FAMILY***

Disabled



Enabled - No Check Digit  
Control



Enabled - Check Digit Control  
without Transmission



Enabled - Check Digit Control  
and Transmission



Code Length Check - Disabled



Code Length Check - Enabled



Minimum Code Length



Read the number in the range  
**001-255.**

Maximum Code Length



Read the number in the range  
**001-255.**

Enter Gun Configuration



**CODE SELECTION  
Linear Symbologies**

Exit and Save Gun Configuration



---

***CODE 128 FAMILY***

Code 128 - Disabled



Code 128 - Enabled



Code Length Check - Disabled



Code Length Check - Enabled



Code 128 - Min. Code Length



Read the number in the range  
**001-255.**

Code 128 - Max. Code Length



Read the number in the range  
**001-255.**

EAN 128 - Disabled



EAN 128 - Enabled



Enter Gun Configuration



## CODE SELECTION Linear Symbologies

Exit and Save Gun Configuration



EAN 128 - Code Length Check  
Disabled



EAN 128 - Code Length Check  
Enabled



EAN 128 - Min. Code Length



Read the number in the range  
**001-255.**

Maximum Code Length



Read the number in the range  
**001-255.**

## *CODE 93 FAMILY*

Disabled



Enabled



Code Length Check - Disabled



Code Length Check - Enabled



Minimum Code Length



Read the number in the range  
**001-255.**

Enter Gun Configuration



## CODE SELECTION Linear Symbologies

Exit and Save Gun Configuration



Maximum Code Length



Read the number in the range  
**001-255.**

---

## *RSS FAMILY*

Disable RSS Expanded



Enable RSS Expanded



Disable RSS Limited



Enable RSS Limited



Disable RSS 14



Enable RSS 14



Disable RSS Expanded  
Stacked



Enable RSS Expanded Stacked



Disable RSS 14 Stacked



Enable RSS 14 Stacked



Enter Gun Configuration



**CODE SELECTION**  
**2D Symbologies**

Exit and Save Gun Configuration



---

***2D Symbologies***

---

***PDF417***

Disabled



Enabled



Macro PDF417 Unbuffered  
Mode



Macro PDF417 Buffered Mode



The following command carries out its specific function and does not require reading the Enter or Exit and Save Configuration codes.

Abort Macro PDF417 Buffered  
Mode



It stops buffering the read codes at any time. All the buffered codes will not be saved.

---

***MICRO PDF417***

Disabled



Enabled



Enter Gun Configuration



**CODE SELECTION  
2D Symbologies**

Exit and Save Gun Configuration



---

***DATAMATRIX FAMILY***

Disabled



Enabled



Minimum Code Length



Read the number in the range  
**0001-3600.**

Maximum Code Length



Read the number in the range  
**0001-3600.**

Rectangular Style – Disabled



Rectangular Style - Enabled



---

***QR FAMILY***

Disabled



Enabled





Enter Gun Configuration



**CODE SELECTION**  
**2D Symbologies**

Exit and Save Gun Configuration



---

***POSTAL CODES FAMILY***

All Disabled



Australian Post - Enabled



Japan Post - Enabled



PLANET - Enabled



POSTNET - Enabled



POSTNET with B and B' -  
Enabled



POSTNET and PLANET -  
Enabled



POSTNET with B and B' and  
PLANET - Enabled



KIX Code - Enabled



Royal Mail Code (RM4SCC) -  
Enabled



Enter Gun Configuration



**CODE SELECTION**  
**2D Symbologies**

Exit and Save Gun Configuration



---

***MAXICODE FAMILY***

Maxicode Mode 0 - Disabled



Maxicode Mode 0 Enabled



Maxicode Mode 1 - Disabled



Maxicode Mode 1 - Enabled



Maxicode Mode 2 - Disabled



Maxicode Mode 2 - Enabled



Maxicode Mode 3 - Disabled



Maxicode Mode 3 - Enabled



Maxicode Mode 4 - Disabled



Maxicode Mode 4 - Enabled



Maxicode Mode 5 - Disabled



Maxicode Mode 5 - Enabled



Enter Gun Configuration



## CODE SELECTION 2D Symbologies

Exit and Save Gun Configuration



Maxicode Mode 6 - Disabled



Maxicode Mode 6 - Enabled



---

## COMPOSITE CODES



**NOTE**

*Before enabling this symbology, it is necessary to enable the linear barcode family (among RSS, EAN128 or UPC/EAN) contained in the composite code to be read.*

Disabled



Enabled



Keep Linear Part



Discard Linear Part



Enter Gun Configuration



## READING PARAMETERS

Exit and Save Gun Configuration



---

# READING PARAMETERS

---

### *TRIGGER MODE*

Trigger Level



Trigger Pulse



---

### *TRIGGER TYPE*

Normal Trigger



Software Trigger



---

### *FLASH MODE*

Flash ON Duration



Read a number in the range **01-99**, which corresponds to a max 9.9 seconds duration.

Flash OFF Duration



Read a number in the range **01-99**, which corresponds to a max 9.9 seconds duration.

Enter Gun Configuration



Exit and Save Gun Configuration



## READING PARAMETERS

---

### *BEEPER TONE*

Tone 1



Tone 2



Tone 3



Tone 4



---

### *BEEPER VOLUME*

Beeper OFF



Low Volume



Medium Volume



High Volume



---

### *BEEPER DURATION*

Beeper Duration



Read a number in the range  
**01-99**, which corresponds to a  
max 99 ms duration.

Enter Gun Configuration



Exit and Save Gun Configuration



## READING PARAMETERS

---

### *READS PER CYCLE*

One Read per Cycle



Multiple Reads per Cycle



---

### *SCAN TIMEOUT*

Define Timeout



Read a number in the range **01-99**, which corresponds to a max 99 seconds duration. The timeout is activated when the decoding fails.

---

### *AIMING SYSTEM DELAY*

Disable



Enable Short



Enable Medium



Enable Long



---

### *GOOD READ SPOT*

Disable



Enable Short



Enable Medium



Enable Long



Enter Gun Configuration



READING  
PARAMETERS

Exit and Save Gun Configuration



---

***User Defined Beeper***

---

***USER DEFINED BEEPER TONE***

Tone 1



Tone 2



Tone 3



Tone 4



---

***USER DEFINED BEEPER VOLUME***

Beeper OFF



Low Volume



Medium Volume



High Volume



Enter Gun Configuration



Exit and Save Gun Configuration



## READING PARAMETERS

---

### *USER DEFINED BEEPER DURATION*

Set Duration



Read a number in the range **01-99**, which corresponds to a max 990 ms duration.

---

### *TEST USER DEFINED BEEPER*

The following command carries out its specific function and does not require reading the Enter or Exit and Save Configuration codes.

Test User Defined Beeper



See par. 9.1.2 for details.



Enter Gun Configuration



## READING PARAMETERS

Exit and Save Gun Configuration



---

# *Code Ordering and Selection*

---

---

## *CODES PER SCAN*

One Code per Scan



All Codes per Scan



---

## *CENTRAL CODE TRANSMISSION*

The following command is available when working in "one code per scan".

Disabled



Enabled



See par. 3.6 for details.

---

## *ORDER BY CODE LENGTH*

The following command is available when working in "all codes per scan".

Disabled



Enabled - Increasing Order



Enabled - Decreasing Order



Enter Gun Configuration



## READING PARAMETERS

Exit and Save Gun Configuration



---

### *ORDER BY CODE SYMBOLOGY*

The following command is available when working in "all codes per scan".

Set Order



1. Select the number of codes in the range **0-9**.
2. Select the Datalogic Standard Code Identifier for each above defined code from the table in Appendix C.

See par. 3.6 for details.

---

## *Autoscan*

---

### *AUTOSCAN MODE*

Disabled



Enabled in Normal Mode



Enabled in Pattern Mode



See par. 3.4 for details.

---

### *AUTOSCAN AIMING SYSTEM*

Disabled



Enabled



Enter Gun Configuration



## READING PARAMETERS

Exit and Save Gun Configuration



---

### ***AUTOSCAN HARDWARE TRIGGER***

Disabled



Enabled



---

### ***AUTOSCAN ILLUMINATION SYSTEM***

Disabled



Enabled



**NOTE**

*The following commands can be activated only when One Code per Scan is enabled.*

---

### ***SAFETY TIME***

Disabled



Enabled



Valid only with software trigger or autoscan enabled.

See par. 6.4.1 for details.

---

### ***SAFETY TIME DURATION***

Set Duration



Read a number in the range **01-99**, where 01 corresponds to 100 ms and 99 to 9.9 seconds.

Enter Gun Configuration



Exit and Save Gun Configuration



**READING  
PARAMETERS**

---

***STAND AUTOSCAN MODE***

Disable



Normal



Pattern



Enter Cradle Configuration



Exit and Save Cradle Configuration



## CAPTURE IMAGE

---

# CAPTURE IMAGE

In order to capture an image, you should read one of these codes (for further details see par. 3.3), then point at the image subject and pull the trigger. The image will be captured and sent to the host PC according to the Preset Configuration.

Capture Image using Preset 1



Capture Image using Preset 2



Capture Image using Preset 3



Capture Image using Preset 4





---

# ADVANCED IMAGE CAPTURE

---

## *Image Preset 1*

### Basic Configuration

---

#### *IMAGE FORMAT – PRESET 1*

Bitmap Format



JPEG Format



TIFF Format



---

#### *RESOLUTION – PRESET 1*

Full Resolution (640 x 480)



Quarter Resolution (320 x 240)



Enter Gun Configuration



Exit and Save Gun Configuration



## ADVANCED IMAGE CAPTURE

---

### *JPEG QUALITY FACTOR – PRESET 1*

JPEG Quality Factor



Set the JPEG compression level in the range **000-100**.

## Advanced Configuration

---

### *WINDOW DIMENSIONS – PRESET 1*

Origin along X Axis



Read a number in the range **0-630**

Origin along Y Axis



Read a number in the range **0-470**

Width



Read a number in the range **10-640**

Height



Read a number in the range **10-480**

Enter Gun Configuration



Exit and Save Gun Configuration



## ADVANCED IMAGE CAPTURE

---

### ***BRIGHTNESS – PRESET 1***

Increase



Read a number in the range  
**0-100**

Decrease



Read a number in the range  
**0-100**

---

### ***CONTRAST – PRESET 1***

Increase



Read a number in the range  
**0-100**

Decrease



Read a number in the range  
**0-100**



Enter Gun Configuration



# ADVANCED IMAGE CAPTURE

Exit and Save Gun Configuration



---

## *ZOOM – PRESET 1*

20%



40%



60%



80%



100%



120%



140%



160%



180%



200%



Enter Gun Configuration



Exit and Save Gun Configuration



**ADVANCED  
IMAGE CAPTURE**

---

***COLOR DEPTH – PRESET 1***

2 Grey Levels\*



16 Grey Levels\*



256 Grey Levels



\* only for TIFF and BMP Images.

Enter Gun Configuration



Exit and Save Gun Configuration



**ADVANCED  
IMAGE CAPTURE**

---

***Image Preset 2***

**Basic Configuration**

---

***IMAGE FORMAT – PRESET 2***

Bitmap Format



JPEG Format



TIFF Format



---

***RESOLUTION – PRESET 2***

Full Resolution (640 x 480)



Quarter Resolution (320 x 240)



---

***JPEG QUALITY FACTOR – PRESET 2***

JPEG Quality Factor



Set the JPEG compression level  
in the range **000-100**.

Enter Gun Configuration



Exit and Save Gun Configuration



## ADVANCED IMAGE CAPTURE

---

### Advanced Configuration

---

#### *WINDOW DIMENSIONS – PRESET 2*

Origin along X Axis



Read a number in the range  
**0-630**

Origin along Y Axis



Read a number in the range  
**0-470**

Width



Read a number in the range  
**10-640**

Height



Read a number in the range  
**10-480**

Enter Gun Configuration



Exit and Save Gun Configuration



## ADVANCED IMAGE CAPTURE

---

### *BRIGHTNESS – PRESET 2*

Increase



Read a number in the range  
**0-100**

Decrease



Read a number in the range  
**0-100**

---

### *CONTRAST – PRESET 2*

Increase



Read a number in the range  
**0-100**

Decrease



Read a number in the range  
**0-100**

Enter Gun Configuration



# ADVANCED IMAGE CAPTURE

Exit and Save Gun Configuration



---

## *ZOOM – PRESET 2*

20%



40%



60%



80%



100%



120%



140%



160%



180%



200%



Enter Gun Configuration



Exit and Save Gun Configuration



**ADVANCED  
IMAGE CAPTURE**

---

***COLOR DEPTH – PRESET 2***

2 Grey Levels\*



16 Grey Levels\*



256 Grey Levels



\* only for TIFF and BMP Images.

Enter Gun Configuration



Exit and Save Gun Configuration



**ADVANCED  
IMAGE CAPTURE**

---

***Image Preset 3***

**Basic Configuration**

---

***IMAGE FORMAT – PRESET 3***

Bitmap Format



JPEG Format



TIFF Format



---

***RESOLUTION – PRESET 3***

Full Resolution (640x 480)



Quarter Resolution (320 x 240)



---

***JPEG QUALITY FACTOR – PRESET 3***

JPEG Quality Factor



Set the JPEG compression level  
in the range **000-100**.





# ADVANCED IMAGE CAPTURE

---

## Advanced Configuration

---

### *WINDOW DIMENSIONS – PRESET 3*

Origin along X Axis



Read a number in the range  
**0-630**

Origin along Y Axis



Read a number in the range  
**0-470**

Width



Read a number in the range  
**10-640**

Height



Read a number in the range  
**10-480**

Enter Gun Configuration



Exit and Save Gun Configuration



## ADVANCED IMAGE CAPTURE

---

### ***BRIGHTNESS – PRESET 3***

Increase



Read a number in the range  
**0-100**

Decrease



Read a number in the range  
**0-100**

---

### ***CONTRAST – PRESET 3***

Increase



Read a number in the range  
**0-100**

Decrease



Read a number in the range  
**0-100**

Enter Gun Configuration



# ADVANCED IMAGE CAPTURE

Exit and Save Gun Configuration



---

## *ZOOM – PRESET 3*

20%



40%



60%



80%



100%



120%



140%



160%



180%



200%



Enter Gun Configuration



Exit and Save Gun Configuration



**ADVANCED  
IMAGE CAPTURE**

---

***COLOR DEPTH – PRESET 3***

2 Grey Levels\*



16 Grey Levels\*



256 Grey Levels



\* only for TIFF and BMP Images.

Enter Gun Configuration



**ADVANCED  
IMAGE CAPTURE**

Exit and Save Gun Configuration



---

# *Image Preset 4*

## **Basic Configuration**

---

### *IMAGE FORMAT – PRESET 4*

Bitmap Format



JPEG Format



TIFF Format



---

### *RESOLUTION – PRESET 4*

Full Resolution (640 x 480)



Quarter Resolution (320 x 240)



---

### *JPEG QUALITY FACTOR – PRESET 4*

JPEG Quality Factor



Set the JPEG compression level  
in the range **000-100**.



**ADVANCED  
IMAGE CAPTURE**

---

**Advanced Configuration**

---

***WINDOW DIMENSIONS – PRESET 4***

Origin along X Axis



Read a number in the range  
**0-630**

Origin along Y Axis



Read a number in the range  
**0-470**

Width



Read a number in the range  
**10-640**

Height



Read a number in the range  
**10-480**

Enter Gun Configuration



Exit and Save Gun Configuration



## ADVANCED IMAGE CAPTURE

---

### ***BRIGHTNESS – PRESET 4***

Increase



Read a number in the range  
**0-100**

Decrease



Read a number in the range  
**0-100**

---

### ***CONTRAST – PRESET 4***

Increase



Read a number in the range  
**0-100**

Decrease



Read a number in the range  
**0-100**

Enter Gun Configuration



# ADVANCED IMAGE CAPTURE

Exit and Save Gun Configuration



---

## *ZOOM – PRESET 4*

20%



40%



60%



80%



100%



120%



140%



160%



180%



200%





Enter Gun Configuration



Exit and Save Gun Configuration



**ADVANCED  
IMAGE CAPTURE**

---

***COLOR DEPTH – PRESET 4***

2 Grey Levels\*



16 Grey Levels\*



256 Grey Levels



\* only for TIFF and BMP Images.

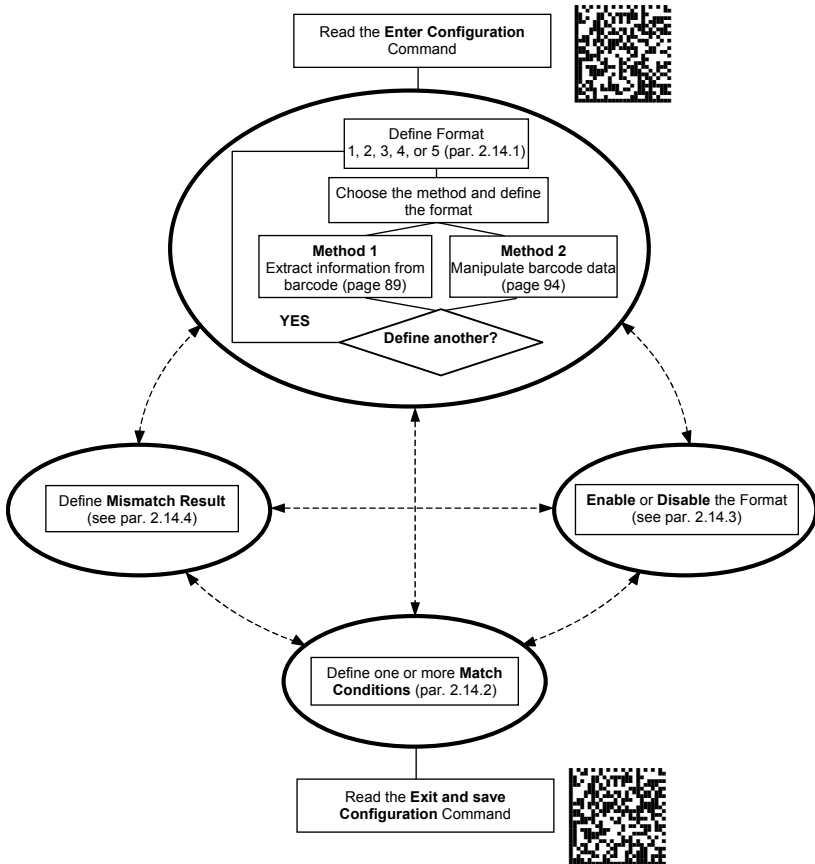
### 5.3 ADVANCED DATA FORMAT

Advanced data format has been designed to offer you complete flexibility in changing the format of barcode data **before** transmitting it to the host system.

Up to 5 advanced code management formats can be defined by completing the four given procedures following the desired order:

- Format Definition
- Mismatch Result
- Enable/Disable Format
- Match Conditions

The formats defined will be restored to default values when reading the general "Restore Default" code given in par. 6.5.



### 5.3.1 Format Definition

<b>STEP 1</b>	<b>FORMAT DEFINITION</b>
---------------	--------------------------

Define Format 1



Define Format 2



Define Format 3



Define Format 4



Define Format 5



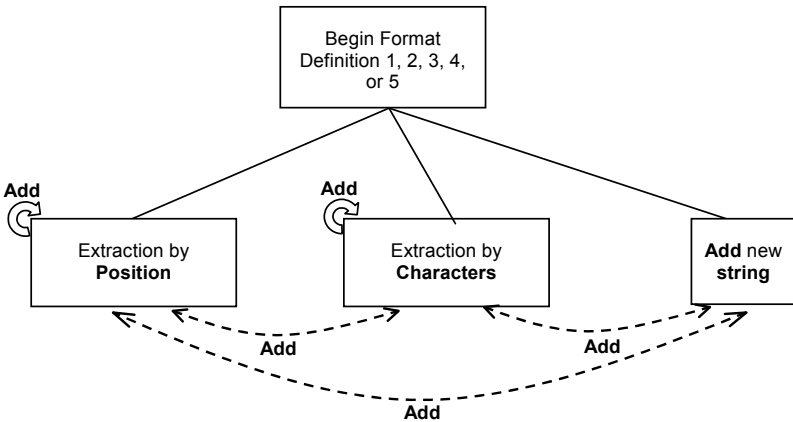
<b>STEP 2</b>	<b>FORMAT DEFINITION</b>
---------------	--------------------------

### Method 1 - Extracting Information from Barcode

Method 1 allows extracting one or more fields by position or by characters from the decoded barcode. These fields are sent to the host computer as data of the output message, while the characters not included in the formatting procedure will be deleted and not inserted in the output message.

These two kinds of extraction (by position / by character) can be used together within the same format definition; furthermore, it is possible to complete the new format by adding a new string of characters. Since there is no fixed rule, the procedures can be freely put in order and repeated according to your requirement.

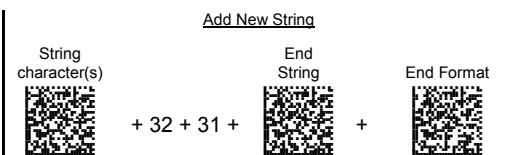
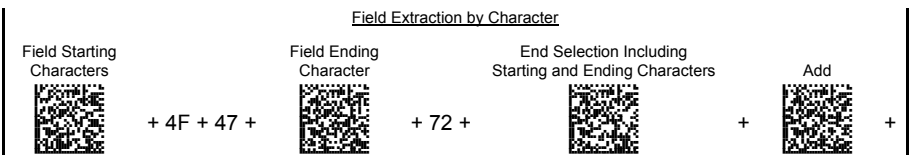
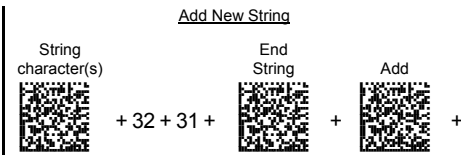
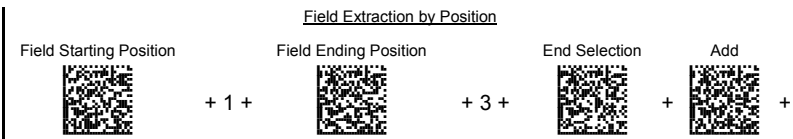
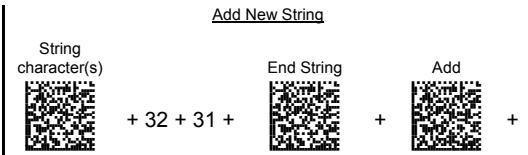
The only limit is determined by the size of the internal reserved memory used to define the format.



**Example      Method 1 Extracting Information from Barcode**

**Decoded code:** <DATALOGICproduct>

**Formatting procedure:** Add new string + Extract field by position + Add new string + Extract field by character + Add new string



**Output message:** <21DAT21OGICpr21>

## **FIELD EXTRACTION BY CHARACTER**

### **a) Define Field Starting Character(s)**

Field Starting Character(s)



Read the Hex value from the Hex/Numeric table identifying the starting character(s) of the field to be extracted. Valid values are in the range **00-7F**.

### **b) Define Field Ending Character(s)**

Field Ending Character(s)



Read the Hex value from the Hex/Numeric table identifying the ending character(s) of the field to be extracted. Valid values are in the range **00-7F**.

### **c) Field Delimiter Selection**

Include Start/End  
Characters



Discard Start/End  
Characters



**OR**

### **d) EITHER Add Field or String**

Add



- To add other fields selected by characters read the code and repeat this procedure from step **a** for each field to be selected;
- To add a new string of characters read the code and follow the procedure described on page 100;
- To add the procedure selecting new fields by position read the code and follow the description given on page 99.

**OR**

### **End Format Definition**

End Format Definition



Read the code to end the format definition.

## FIELD EXTRACTION BY POSITION

a)

Field Starting Position



### Define Field Starting Position

Read a number corresponding to the field starting position.

b)

Field Ending Position



Read a number corresponding to the field ending position.

### Define Field Ending Position

Last Position



OR

Read this code to set the field ending position to the last position of the code:

c)

End Selection



### End Field Selection

Read the code to end the field selection.

d)

**EITHER**

Add



### Add Field or String

- To add other fields selected by position read the code and repeat this procedure from step a for each field to be selected;
- To add a new string of characters read the code and follow the procedure described on page 100;
- To add the procedure selecting new fields by characters read the code and follow the description given on page 98.

**OR**

### End Format Definition

End Format Definition



Read the code to end the format definition.

## **ADD NEW STRING**

### **a) Define New String**

String Character(s)



Read the Hex value from the Hex/Numeric table identifying the character(s). Valid values are in the range **00-7F**.

### **b) End String**

End String



Read the code to end the string defined in step **a**.

### **c) EITHER Add Procedure**

Add



- To add the procedure extracting fields by characters follow the steps given on page 98;
- To add the procedure extracting fields by position follow the steps given on page 99;

### **OR End Format Definition**

End Format Definition



Read the code to end the format definition.



## Method 2 - Manipulating the Barcode Data

Method 2 allows modifying the barcode data by means of one of the following procedures:

- String insertion;
- String deletion;
- String substitution;
- Field deletion.

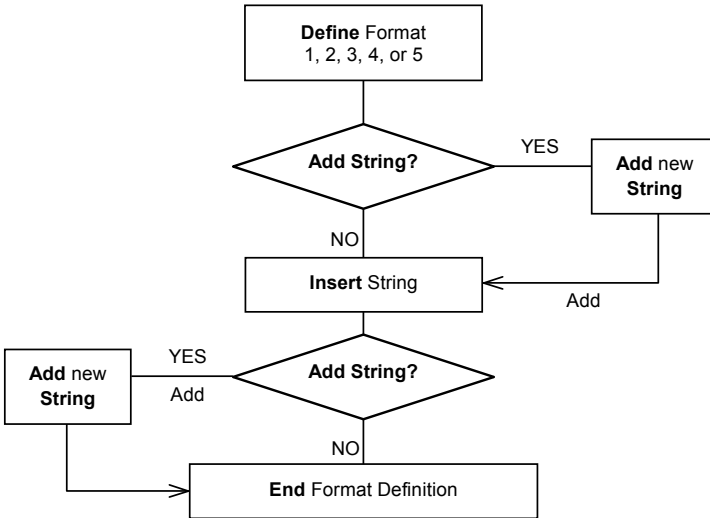
Once the data has been modified, it is sent to the host computer as data of the output message.

Unlike Method 1 this method does not allow associating different procedures together. This means that each format definition corresponds to a single procedure. Despite this, it is possible to add a new string of characters to the beginning or ending part of the formatted barcode.

The only limit is determined by the size of the internal reserved memory used to define the format.

## STRING INSERTION

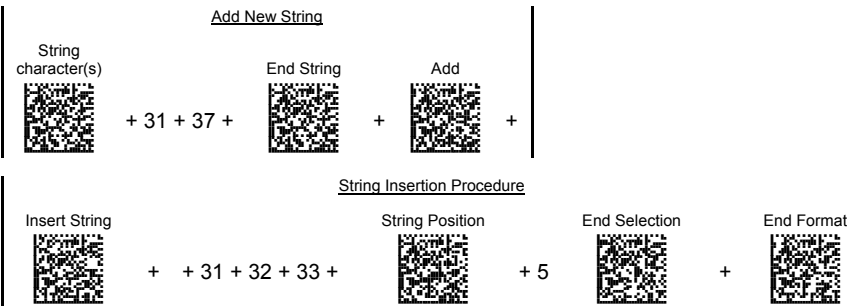
To complete this procedure proceed as follows:



### Example

**Decoded code:** <DATALOGICproduct>

**Formatting procedure:** Add new string + Insert String



**Output message:** <17DATA123LOGICproduct>

## String Insertion Procedure

a)

Insert String



### Insert String

Read the Hex value from the Hex/Numeric table identifying the characters to be inserted. Valid values are in the range **00-7F**.

b)

String Position



### Define String Position

Read a number corresponding to the string position within the barcode.

c)

End Selection



### End Selection

Read the code to end the field selection.

d)

**EITHER**

Add



### Add String

To add a new string of characters read the code and follow the procedure described on page 111;

**OR**

End Format Definition

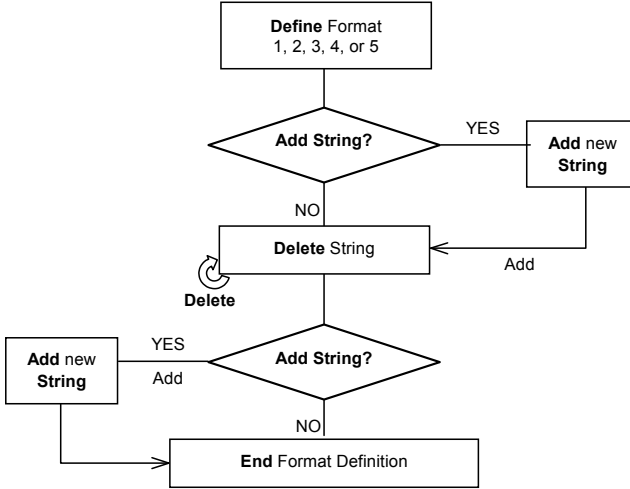


### End Format Definition

Read the code to end the format definition.

## STRING DELETION

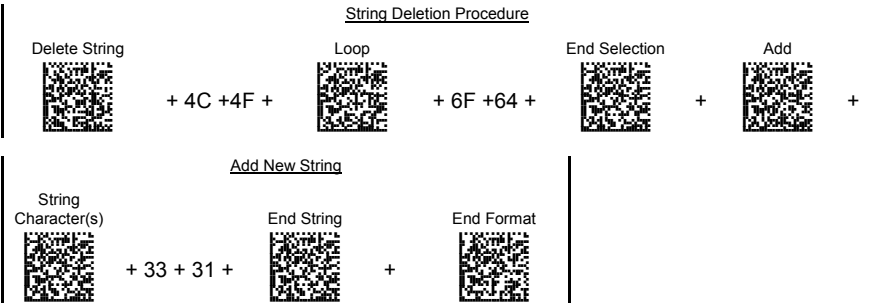
To complete this procedure proceed as follows:



### Example

**Decoded code:** <DATALOGICproduct>

**Formatting procedure:** Delete First String + Delete Second String + Add New String.



**Output message:** <DATAGICpruct31>

## String Deletion Procedure

a)

Delete



### Delete String

Read the Hex value from the Hex/Numeric table identifying the string character(s) to be deleted. Valid values are in the range **00-7F**.

b) (optional)

Loop



### Select Other Strings to be Deleted

Read the code above and repeat the procedure from step a.

c)

End Selection



### End Selection

Read the code to end the selection.

d)

**EITHER**

Add



### Add String

To add a new string of characters read the code and follow the procedure described on page 111;

**OR**

End Format Definition

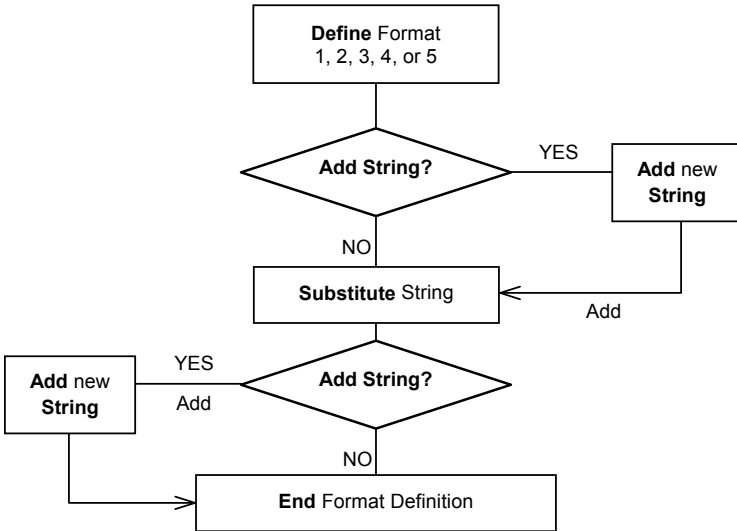


### End Format Definition

Read the code to end the format definition.

## STRING SUBSTITUTION

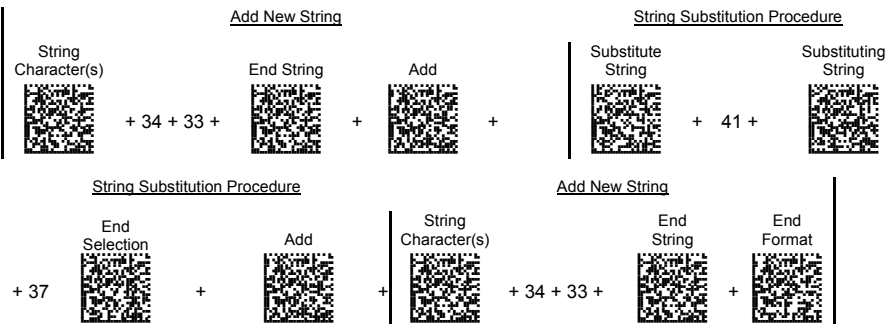
To complete this procedure proceed as follows:



### Example

**Decoded code:** <DATALOGICproduct>

**Formatting procedure:** Add new string + String substitution + Add new string.



**Output message:** <43D7T7LOGICproduct43>

## String Substitution Procedure

a)

Substitute String



### Define String to be Substituted

Read the Hex value from the Hex/Numeric table identifying the characters of the string to be substituted. Valid values are in the range **00-7F**.

b)

Substituting String



### Define Substituting String

Read the Hex value from the Hex/Numeric table identifying the characters of the substituting string. Valid values are in the range **00-7F**.

c)

End Selection



### End Selection

Read the code to end the selection.

d)

**EITHER**

Add



### Add String

To add a new string of characters read the code and follow the procedure described on page 111;

**OR**

End Format Definition



### End Format Definition

Read the code to end the format definition.





## Field Deletion Procedure

a)

Delete



### Delete Field

Read the code to enable the command deleting the field.

b)

Field Starting Character



### Define Field Starting Character

Read the Hex value from the Hex/Numeric table identifying the starting characters. Valid values are in the range **00-7F**.

c)

Field Ending Character



### Define Field Ending Character

Read the Hex value from the Hex/Numeric table identifying the ending character/s. Valid values are in the range **00-7F**.

d)

End Selection



### End Field Selection

Read the code to end the field selection.

e)

(optional)

Loop



### Select Other Fields to be Deleted

Read the following code and repeat the procedure from step **b** for each field to be deleted:

f)

**EITHER**

**Add String**

Add



To add a new string of characters read the code and follow the procedure described on page 111;

**OR**

**End Format Definition**

End Format Definition



Read the code to end the format definition.

## **ADD NEW STRING**

a)

String Character



### **Define New String**

Read the Hex value from the Hex/Numeric table identifying the starting characters. Valid values are in the range **00-7F**.

b)

End String Plus Procedure



### **End String and Define Procedure**

Read the code to end the string selection and continue defining a new procedure belonging to Method 1.

**OR**

End String & Format



### **End String and Format**

Read the code to end the string and the format definition.

### 5.3.2 Match Conditions

By setting one or more of the following conditions it is possible to select the codes to be formatted. Follow the given steps to define the desired condition:

#### MATCH WITH PREDEFINED SUBSTRING

Match with Substring



#### Define Matching Substring

Read the above code and:

1. read a number in the range **1-5** corresponding to the desired format number;
2. set the number of characters defining the matching string in the range **00-10**;
3. read the corresponding character as Hex value from the Hex/Numeric table identifying the substring character/s. Valid values are in the range **00-7F**.

(optional)

#### Define Substring Position

Matching Substring Position



Read the above code and:

1. read a number in the range **1-5** corresponding to the desired format number;
2. read the number corresponding to the substring position in the range **0-255**;

**AND/OR**

#### MATCH CODE LENGTH

#### Define Code Length

Match Code Length



Read the above code and:

1. read a number in the range **1-5** corresponding to the desired format number;
2. read the number in the range **0-255**;

**AND/OR**

## **MATCH SYMBOLOGY**

### **Define Code Symbology**

Match Symbology



Read the above code and:

1. read a number in the range **1-5** corresponding to the desired format number;
2. set the number of the matching code symbologies in the range **0-4**;
3. select the Datalogic Standard Code Identifier from the Code Identifier Table in Appendix C.

### 5.3.3 Format Enable/Disable

Format 1



0 = disabled  
1 = enabled

Format 2



0 = disabled  
1 = enabled

Format 3



0 = disabled  
1 = enabled

Format 4



0 = disabled  
1 = enabled

Format 5



0 = disabled  
1 = enabled

Disable All Formats





## 6 REFERENCES

---

### 6.1 RS232 – USB COM

#### 6.1.1 ACK/NACK Protocol

The transmission protocol takes place between reader and Host. Once the reader has read a code, it emits a good read beep and passes its data to the Host.

When ACK/NACK is disabled, there is no control from reader to Host transmission.

When ACK/NACK is enabled, the Host sends an ACK character (06 HEX) in the case of good reception or the NACK character (15 HEX) requesting re-transmission, in the case of bad reception.

If the reader does receive an ACK, no signal will be emitted; whereas, if it does not receive an ACK or NACK, it will emit a wrong reception tone after a few seconds.



**NOTE**

*Gryphon™ D432/D432E reader cannot read barcodes while waiting for the Host response.*

#### 6.1.2 RX Timeout

This parameter can be used to automatically end data reception from the Host after the specific period of time.

If no character is received from Host, after the timeout expires, any incomplete string (any string not terminated by <CR>) is flushed from the device buffer.



## **6.2 USB KEYBOARD**

### **6.2.1 Keyboard Speed**

This parameter manages the transmission speed of characters to the Host. A fast Keyboard Speed allows rapid transmission of a great amount of characters (for example 2D codes), but it might not be compatible with slower systems.

## **6.3 CODE SELECTION**

### **6.3.1 Issue Identical Codes**

This parameter manages the code transmission when more than one code containing the same information is detected in a single scan. All identical codes are transmitted to the Host when the parameter is enabled; if disabled, only one of the identical codes is sent.

## **6.4 READING PARAMETERS**





### **6.4.1 Safety Time**

Safety time prevents the device from immediately decoding the same code more than once. A timeout can be set up to 9.9 seconds before the decoder will accept the same code. Reading is immediate if the code changes.

The safety time parameter is not applicable when all codes per scan is enabled or when setting one read per cycle in normal (hardware) trigger operating mode.

## 6.5 CONFIGURATION EDITING COMMANDS

The following commands carry out their specific function and do not require reading the Enter or Exit and Save Configuration codes.

Command	Description
	Restore Gryphon™ D432/D432E reader default configuration:
	Transmit the Gryphon™ D432/D432E reader Software release.
	Transmit the Gryphon™ D432/D432E current configuration in ASCII format to Host.
	Transmit the Gryphon™ D432/D432E current data format configuration in ASCII format to Host.

## 7 TEST CODE SYMBOLS

---

Use these 1D and 2D test symbols to check that the reader is imaging and decoding properly, according to your configuration.



QR



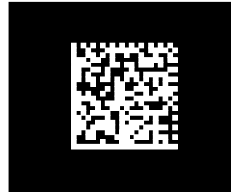
PDF417



DataMatrix (Normal)



DataMatrix (Inverse)



## 8 MAINTENANCE

---

You do not need to perform regular preventative maintenance on the Gryphon™ D432/D432E reader.

**Do not try to open the case, because you might damage the interior electronic components and such action voids the warranty.**

You can keep your reader in good operating condition by:

- periodically cleaning the reading window using water or a mild detergent solution and a soft cloth or tissue.
- watching for any damage to the housing.



**CAUTION**

*Do not use abrasive cleaning agents on the reader's window to avoid scratches. Do not use solvents on the housing or window to avoid damage. Do not submerge the reader in water. It is not waterproof.*

## 9 TECHNICAL FEATURES

### GRYPHON™ D432/D432E Common Features

<b>Electrical Features</b>	
Operating Voltage	4.75 to 5.25 V
Power Consumption @ 5V (Stand-by)	120 mA
@ 5V (Typical)	245 mA
@ 4.75V (Peak current)	330 mA
<b>Communications Features</b>	
Standard Interfaces	RS232, Keyboard emulation AT IBM, USB COM emulation, USB Keyboard emulation
Proprietary Interfaces	USB Bulk, USB Generic HID
<b>Environmental Features</b>	
Operating Temperature	0° to+ 50 °C (+32° to +122 °F)
Storage Temperature	-20° to +70 °C (-4° to +158 °F)
Humidity	0 to 95% NC
Drop Resistance	IEC 68-2-32 Test ED – 1.5 m.
<b>Mechanical Features</b>	
Dimensions	179 x 81 x 98 mm (7.04 x 3.18 x 3.85 inches)
Weight	198 g (6.9 oz.) without cable
<b>Decoding Capability</b>	
1D	Interleaved 2 of 5, Code 39, Code 32, Code 128, EAN 128, Code 93, UPC/EAN/JAN, Codabar, RSS
2D	PDF417, Micro PDF417, Macro PDF417, Maxicode, DataMatrix (ECC200), QR, Composite Codes
Postal Codes	POSTNET, PLANET, Japan Post, Australia Post, KIX Code, Royal Mail Code (RM4SCC)
<b>Imaging Option</b>	
Image	640 x 480 pixel format (VGA) 320 x 240 pixel format (CIF);
Graphic Format	JPEG, 256 gray levels BMP, 2, 16, 256 gray levels TIFF, 2, 16, 256 gray levels
<b>Optical Features</b>	
Sensor	640 x 480 pixel element, 2D CMOS Array
Illuminator	LED array
Wavelength	In the range 630 ~ 670 nm
Max. LED Output Power	0.33 mW
LED Safety Class	Class 1 to EN 60825-1
Aiming System	Visible Laser Diode
Wavelength	650 nm
Laser Safety Class	Class 2 - EN 60825-1; Class II CDRH
Ambient light	0 - 100000 lux (artificial)

**GRYPHON™ D432**

<b>Optical Features</b>			
Focus distance	115 mm		
Field of view	21.8° (H) x 16.7° (V)		
Horizontal field of view at distance ( <b>d</b> ) in mm	0.4 <b>d</b> + 12		
Vertical field of view at distance ( <b>d</b> ) in mm	0.3 <b>d</b> + 9		
Max Resolution	<b>Linear codes - mm (mils)</b>		<b>DataMatrix – mm (mils)</b>
	0.10 (4)		0.17 (6.6)
Depth of field*			
<b>1D (linear):</b>	<b>X-dimension mm (mils)</b>	<b>Symbol size cm (in)</b>	<b>DOF cm (in)</b>
Code39	0.13 (5)	1.2 (0.47)	7.0 to 13.5 (2.75 to 5.31)
	0.5 (20)	3.2 (1.26)	6.5 to 31.0 (2.55 to 12.20)
EAN13	0.33 (13)	3.1 (1.22)	6.5 to 24.5 (2.55 to 9.64)
<b>2D:</b>	<b>X-dimension mm (mils)</b>	<b>Symbol size cm (in)</b>	<b>DOF cm (in)</b>
POSTNET	0.5 (20)	4.0 x 0.4 (1.57 x 0.16)	11.5 to 30.0 (4.53 to 11.81)
PDF417	0.13 (5)	1.1 x 0.9 (0.43 x 0.35)	8.0 to 14.0 (3.14 to 5.51)
	0.17 (6.6)	1.4 x 1.2 (0.55 x 0.47)	5.5 to 17.5 (2.16 to 6.88)
	0.25 (10)	2.2 x 1.8 (0.86 x 0.71)	3.5 to 22.5 (1.37 to 8.85)
QR	0.25 (10)	0.7 x 0.7 (0.27 x 0.27)	6.0 to 14.3 (3.50 to 20.0)
	0.38 (15)	1.1 x 1.1 (0.43 x 0.43)	4.0 to 20.5 (1.57 to 8.07)
DataMatrix	0.19 (7.5)	0.8 x 0.8 (0.31 x 0.31)	8.2 to 11.2 (3.22 to 4.40)
	0.25 (10)	0.8 x 0.8 (0.31 x 0.31)	5.5 to 15.0 (2.16 to 5.90)
	0.38 (15)	1.0 x 1.0 (0.39 x 0.39)	5.5 to 20.5 (2.16 to 8.07)
Skew	±40°		
Pitch	±35°		
Rotation	360°		
Print Contrast (Min.)	23%		

\* Reading distances are measured from the nose of the reader.

**GRYPHON™ D432E**

<b>Optical Features</b>			
Focus distance	65 mm		
Field of view	20° (H) x 15° (V)		
Horizontal field of view at distance (d) in mm	0.32d + 8.67		
Vertical field of view at distance (d) in mm	0.24d + 6.50		
Max Resolution	<b>Linear codes - mm (mils)</b>		<b>DataMatrix – mm (mils)</b>
	0.05 (2)		0.10 (4)
Depth of field*			
<b>1D (linear):</b>	<b>X-dimension mm (mils)</b>	<b>Symbol size cm (in)</b>	<b>DOF cm (in)</b>
Code39	0.076 (3)	1.2 x 4.0 (0.47 x 1.57)	4.9 to 7.2 (1.92 to 2.83)
	0.13 (5)	1.2 x 4.0 (0.47 x 1.57)	4.0 to 8.7 (1.57 to 3.42)
<b>2D:</b>	<b>X-dimension mm (mils)</b>	<b>Symbol size cm (in)</b>	<b>DOF cm (in)</b>
PDF417	0.76 (3)	0.65 x 0.55 (0.26 x 0.22)	4.5 to 7.2 (1.77 to 2.83)
	0.25 (10)	2.2 x 1.8 (0.86 x 0.71)	3.5 to 12.0 (1.37 to 4.72)
QR	0.13 (5)	0.6 x 0.6 (0.23 x 0.23)	5.0 to 7.2 (1.96 to 2.83)
DataMatrix	0.13 (5)	0.5 x 0.5 (0.20 x 0.20)	5.2 to 7.2 (2.04 to 2.83)
	0.25 (10)	0.8 x 0.8 (0.31 x 0.31)	3.5 to 9.5 (1.37 to 3.74)
Skew	±40°		
Pitch	±35°		
Rotation	360°		
Print Contrast (Min.)	27%		

\* Reading distances are measured from the nose of the reader.



## 9.1 INDICATORS

### 9.1.1 Gryphon™ D432/D432E LED Indicators

The Gryphon™ D432/D432E has one green LED indicator signaling the following reader functions:

STATUS	BEHAVIOR
Power ON	The LED lights up for 2 seconds to signal the power supply is present.
Power ON with USB (without external power supply)	The LED blinks until the Host accepts the device.
Normal Function	The LED lights up after a good decoding and will switch off only at the next trigger press.

### 9.1.2 Beeper

The Gryphon™ D432/D432E basic software provides beeper signals for good/wrong reading and for indicating errors. Its tone, volume and duration can be directly configured by using the codes given on page 65.

The application program can also manage the beeper (User Defined Beeper) when the reader is controlled by a Host PC. It is possible to activate the beeper by sending a command from the Host to the reader via the current communication interface.



**NOTE**

*The configuration of the User Defined Beeper does not influence or change the functioning of the beeper managed by the Gryphon™ D432/D432E basic software.*

### 9.1.3 Good Read Spot

It is possible to enable a green good-read spot, which will be projected in the field of view when the reading is successful.

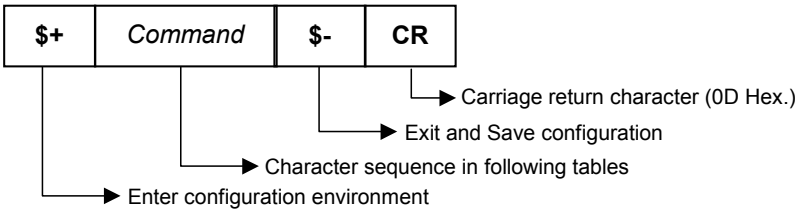
## A HOST CONFIGURATION STRINGS

---

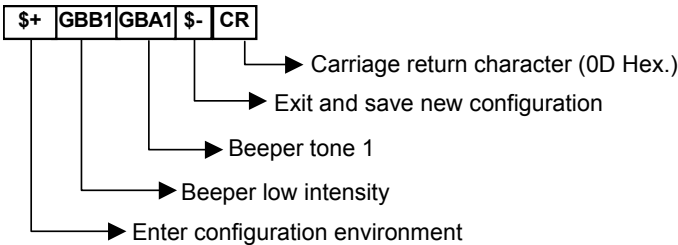
In this section we provide a description of how to modify the device configuration using serial strings sent from the Host.

**This method requires the RS232, USB-Com, USB Bulk or USB Generic HID interface.**

The device configuration can be changed by receiving commands from the Host through the current interface. When this method is used, the programming sequence format is the following:



**Example:**



Each configuration parameter setting removes the condition previously active for that parameter.



**NOTE**

*Configuring some configuration commands, such as those of advanced formatting, through strings may result very complex. For this reason they are not provided in the following tables but can be configured by using VisualSetup configuration program or referring to the related section in chapter 5 of this manual.*

---

**SERIAL CONFIGURATION STRINGS**


---

ENTER/EXIT CONFIGURATION COMMANDS	
DESCRIPTION	STRING
Enter Configuration	\$+
Exit and Save Configuration	\$-
Restore Default	+\$*\$
Transmit Software Release	+\$#!
Transmit Device Configuration in ASCII	?\$&

These commands do not require \$-

INTERFACE SELECTION		
DESCRIPTION		STRING
RS232	Standard	CPA0
WEDGE	for IBM AT	CPA1
USB	USB COM	CPA3
	USB-KBD	CPA4
	USB Bulk	CPA2
	USB Generic HID	CPA5

RS232		
DESCRIPTION		STRING
Baud rate	1200	DAA00
	2400	DAA01
	4800	DAA02
	9600	DAA03
	14400	DAA04
	19200	DAA05
	38400	DAA06
	57600	DAA07
Parity	115200	DAA08
	none	DBA0
	even	DBA2
	odd	DBA1
Data bits	7	DCA0
	8	DCA1
Stop bits	1	DCB0
	2	DCB1
Handshake	none	DDA0
	RTS/CTS	DDA2
	XON/XOFF	DDA1
ACK/NACK Protocol	disabled	DDB0
	enabled	DDB1

<b>RS232</b>		
<b>DESCRIPTION</b>		<b>STRING</b>
FIFO	disabled	<b>DDC0</b>
	enabled	<b>DDC1</b>
RX Timeout		<b>DEB00 - DEB99</b>
Intercharacter Delay		<b>DEA00 - DEA99</b>
Intercode Delay		<b>DEC00 - DEC99</b>

<b>USB</b>		
<b>DESCRIPTION</b>		<b>STRING</b>
<b>USB-COM</b>		
Handshake	none	<b>UDA0</b>
	RTS/CTS	<b>UDA2</b>
	XON/XOFF	<b>UDA1</b>
ACK/NACK Protocol	disabled	<b>UDB0</b>
	enabled	<b>UDB1</b>
FIFO	disabled	<b>UDC0</b>
	enabled	<b>UDC1</b>
RX Timeout		<b>DEB00 - DEB99</b>
Intercharacter Delay		<b>UEA00 - UEA99</b>
Intercode Delay		<b>UEC00 - UEC99</b>

DATA FORMAT		
DESCRIPTION		STRING
Data Format Restore Default		EZ0
<b>SYMBOLGY INDEPENDENT PARAMETERS</b>		
Code Identifier	disabled	EAA0
	AIM standard Code ID	EAA2
Code Length	disabled	ECA0
	enabled	ECA1
Set Headers	no header	EDA00
	one character	EDA01 $x$
	two characters	EDA02 $xx$
	three characters	EDA03 $xxx$
	four characters	EDA04 $xxxx$
	five characters	EDA05 $xxxxx$
	six characters	EDA06 $xxxxxx$
	seven characters	EDA07 $xxxxxxx$
	eight characters	EDA08 $xxxxxxxx$
	nine characters	EDA09 $xxxxxxxxx$
ten characters	EDA10 $xxxxxxxxxx$	
Headers	disabled	EDB0
	enabled	EDB1
Set Terminators	no terminator	EEA00
	one character	EEA01 $x$
	two characters	EEA02 $xx$
	three characters	EEA03 $xxx$
	four characters	EEA04 $xxxx$
	five characters	EEA05 $xxxxx$
	six characters	EEA06 $xxxxxx$
	seven characters	EEA07 $xxxxxxx$
	eight characters	EEA08 $xxxxxxxx$
	nine characters	EEA09 $xxxxxxxxx$
ten characters	EEA10 $xxxxxxxxxx$	
Terminators	disabled	EEB0
	enabled	EEB1

$x, a =$  HEX values representing an ASCII character.

$x =$  Hex value from **00** to **7F**

CAMERA CONTROL		
DESCRIPTION		STRING
Exposure Mode	fixed	FFA0
	automatic (entire image)	FFA1
	automatic (central part of image)	FFA2
	automatic for highly reflective surfaces	FFA3

CODE SELECTION			STRING
<b>DESCRIPTION</b>			
Disable All Symbologies			<b>AZA0</b>
Disable All Linear Symbologies			<b>AXA0</b>
Disable All 2D Symbologies			<b>AYA0</b>
Issue Identical Codes	disabled		<b>AWB0</b>
	enabled		<b>AWB1</b>
<b>LINEAR SYMBOLOGIES</b>			
UPC/EAN/JAN	disabled		<b>AEA0</b>
	enabled		<b>AEA1</b>
	Add-on	disabled	<b>AEB0</b>
		enabled	<b>AEB1</b>
UPCE extension	enabled	<b>AEC0</b>	
	disabled	<b>AEC1</b>	
Code 39	Standard	disabled	<b>ABA0</b>
		no ckeck digit control	<b>ABA1</b>
		ckeck digit control without transmission	<b>ABA2</b>
		ckeck digit control and transmission	<b>ABA3</b>
	Full ASCII	disabled	<b>ABB0</b>
		enabled	<b>ABB1</b>
	Code Len Check	disabled	<b>ABC0</b>
		enabled	<b>ABC1</b>
	Minimum Code Length		<b>ABD<i>d</i></b>
	Maximum Code Length		<b>ABE<i>d</i></b>
Start/Stop Char TX	enabled	<b>ABF0</b>	
	disabled	<b>ABF1</b>	
Code 32	disabled		<b>ABL0</b>
	enabled		<b>ABL1</b>
Interleaved 2/5	disabled		<b>ACA0</b>
	enabled – no check digit control		<b>ACA1</b>
	enabled – check digit control and without transmission		<b>ACA2</b>
	enabled – check digit control and transmission		<b>ACA3</b>
	Code Len Check	disabled	<b>ACB0</b>
		enabled	<b>ACB1</b>
	Minimum Code Length		<b>ACC<i>d</i></b>
Maximum Code Length		<b>ACD<i>d</i></b>	
Codabar	disabled		<b>ADA0</b>
	enabled – no check digit control		<b>ADA1</b>
	enabled – check digit control and without transmission		<b>ADA2</b>
	enabled – check digit control and transmission		<b>ADA3</b>
	Code Len Check	disabled	<b>ADB0</b>
		enabled	<b>ADB1</b>
	Minimum Code Length		<b>ADC<i>d</i></b>
Maximum Code Length		<b>ADD<i>d</i></b>	

*d*= a number from the HEX/Numeric Table (in the range 001-255)

CODE SELECTION			STRING
DESCRIPTION			
LINEAR SYMBOLOGIES			
Code 128	disabled		<b>AAA0</b>
	enabled		<b>AAA1</b>
	Code Len Check	disabled	<b>AAB0</b>
		enabled	<b>AAB1</b>
	Minimum Code Length		<b>AAC<i>d</i></b>
	Maximum Code Length		<b>AAD<i>d</i></b>
EAN 128	disabled		<b>AOA0</b>
	enabled		<b>AOA1</b>
	Code Len Check	disabled	<b>AOB0</b>
		enabled	<b>AOB1</b>
	Minimum Code Length		<b>AOC<i>d</i></b>
	Maximum Code Length		<b>AOD<i>d</i></b>
Code 93	disabled		<b>AFA0</b>
	enabled		<b>AFA1</b>
	Code Len Check	disabled	<b>AFB0</b>
		enabled	<b>AFB1</b>
	Minimum Code Length		<b>AFC<i>d</i></b>
	Maximum Code Length		<b>AFD<i>d</i></b>
RSS Family	RSS Expanded	disabled	<b>AMA0</b>
		enabled	<b>AMA1</b>
	RSS Limited	disabled	<b>AMB0</b>
		enabled	<b>AMB1</b>
	RSS 14	disabled	<b>AMC0</b>
		enabled	<b>AMC1</b>
	RSS Expanded Stacked	disabled	<b>AMD0</b>
		enabled	<b>AMD1</b>
	RSS 14 Stacked	disabled	<b>AME0</b>
		enabled	<b>AME1</b>

*d* = a number from the HEX/Numeric Table (in the range 001-255)

CODE SELECTION			STRING
DESCRIPTION			STRING
2D SYMBOLOGIES			
PDF417	disabled		AGA0
	enabled		AGA1
	Macro PDF417	unbuffered mode	AVB0
		buffered mode	AVB1
	Micro PDF417	disabled	AGB0
		enabled	AGB1
DataMatrix	disabled		AHA0
	enabled		AHA1
	Minimum Code Length		AHC $e$
	Maximum Code Length		AHD $e$
	Rectangular Style	disabled	AHE0
		enabled	AHE1
QR Family	disabled		AIA0
	enabled		AIA1
Postal Codes	all disabled		ALA0
	Australian Post - enabled		ALA1
	Japan Post - enabled		ALA2
	PLANET - enabled		ALA3
	POSTNET - enabled		ALA4
	POSTNET with B and B' - enabled		ALA5
	POSTNET and PLANET - enabled		ALA6
	POSTNET with B and B' and PLANET - enabled		ALA7
	KIX Code - enabled		ALA8
	Royal Mail Code (RM4SCC) - enabled		ALA9
Maxicode	Mode 0	disabled	AJL0
		enabled	AJL1
	Mode 1	disabled	AJM0
		enabled	AJM1
	Mode 2	disabled	AJN0
		enabled	AJN1
	Mode 3	disabled	AJO0
		enabled	AJO1
	Mode 4	disabled	AJP0
		enabled	AJP1
	Mode 5	disabled	AJQ0
		enabled	AJQ1
	Mode 6	disabled	AJR0
		enabled	AJR1
Composite Code	disabled		ANA0
	enabled		ANA1
	Discard Linear Part	disabled	ANB0
		enabled	ANB1

$e$  = a number from the HEX/Numeric Table (in the range 0001-3600)



READING PARAMETERS		
DESCRIPTION		STRING
Trigger Mode	trigger level	<b>BAA0</b>
	trigger pulse	<b>BAA1</b>
Trigger Type	normal trigger	<b>BAB0</b>
	software trigger	<b>BAB1</b>
Flash On Duration		<b>BF0f</b>
Flash Off Duration		<b>BF1f</b>
Beeper Tone	tone 1	<b>GBA1</b>
	tone 2	<b>GBA2</b>
	tone 3	<b>GBA3</b>
	tone 4	<b>GBA4</b>
Beeper Volume	off	<b>GBB0</b>
	low	<b>GBB1</b>
	medium	<b>GBB2</b>
	high	<b>GBB3</b>
Beeper Duration		<b>GBCf</b>
Reads per Cycle	one read per cycle	<b>BCA0</b>
	multiple reads per cycle	<b>BCA1</b>
Scan Timeout		<b>BEAf</b>
User Defined Beeper Tone	tone 1	<b>GBD1</b>
	tone 2	<b>GBD2</b>
	tone 3	<b>GBD3</b>
	tone 4	<b>GBD4</b>
User Defined Beeper Volume	off	<b>GBE0</b>
	low	<b>GBE1</b>
	medium	<b>GBE2</b>
	high	<b>GBE3</b>
User Defined Beeper Duration		<b>GBFf</b>
Perform User Defined Beep**		<b>\$?GGG</b>
CODE ORDERING AND SELECTION		
Code per Scan	one code per scan	<b>BCB0</b>
	all codes per scan	<b>BCB1</b>
Central Code Transmission	disabled	<b>OAA0</b>
	enabled	<b>OAA1</b>
Order by Code Length	disabled	<b>OAB0</b>
	enabled - increasing order	<b>OAB1</b>
	enabled - decreasing order	<b>OAB2</b>

**f**= a number from the HEX/Numeric Table (in the range 01-99)

\*\* this command carries out its specific function and does not need \$+ and \$-.

READING PARAMETERS		
DESCRIPTION		STRING
<b>AUTOSCAN</b>		
Autoscan Mode	disabled	<b>BBA0</b>
	enabled in normal mode	<b>BBA1</b>
	enabled in pattern mode	<b>BBA2</b>
Autoscan Aiming System	disabled	<b>BBB0</b>
	enabled	<b>BBB1</b>
Autoscan Hardware Trigger	disabled	<b>BBC0</b>
	enabled	<b>BBC1</b>
Autoscan Illumination System	disabled	<b>BBD0</b>
	enabled	<b>BBD1</b>
Safety Time	disabled	<b>BGA0</b>
	enabled	<b>BGA1</b>
Safety Time Duration		<b>BGB<math>f</math></b>
Stand Autoscan Mode	disabled	<b>BBE0</b>
	normal	<b>BBE1</b>
	pattern	<b>BBE2</b>
Aiming System Delay	disabled	<b>BLA00</b>
	enable short	<b>BLA03</b>
	enable medium	<b>BLA06</b>
	enable long	<b>BLA10</b>
Good Read Spot	disabled	<b>BIA0</b>
	enable short	<b>BIA1</b>
	enable medium	<b>BIA2</b>
	enable long	<b>BIA3</b>

$f$ = a number from the HEX/Numeric Table (in the range 01-99)

ADVANCED IMAGE CAPTURE		
DESCRIPTION		STRING
<b>IMAGE PRESET 1</b>		
<b>Basic Configuration</b>		
Image Format	Bitmap format	<b>IAA0</b>
	JPEG format	<b>IAA1</b>
	TIFF format	<b>IAA2</b>
Resolution	full resolution (640x480)	<b>IAB0</b>
	quarter resolution (320x240)	<b>IAB1</b>
JPEG Quality Factor		<b>IAC<math>g</math></b>

$g$ = a number from the HEX/Numeric Table (in the range 000-100)

ADVANCED IMAGE CAPTURE		
DESCRIPTION		STRING
<b>IMAGE PRESET 1</b>		
<b>Advanced Configuration</b>		
Window Dimensions	origin along X axis	<b>IAI<i>h</i></b>
	origin along Y axis	<b>IAL<i>h</i></b>
	width	<b>IAM<i>h</i></b>
	height	<b>IAN<i>h</i></b>
Brightness	increase	<b>IAO0IAF<i>i</i></b>
	decrease	<b>IAO1IAF1<i>i</i></b>
Contrast	increase	<b>IAP0IAE<i>i</i></b>
	decrease	<b>IAP1IAE<i>i</i></b>
Zoom	20%	<b>IAH0</b>
	40%	<b>IAH1</b>
	60%	<b>IAH2</b>
	80%	<b>IAH3</b>
	100%	<b>IAH4</b>
	120%	<b>IAH5</b>
	140%	<b>IAH6</b>
	160%	<b>IAH7</b>
	180%	<b>IAH8</b>
200%	<b>IAH9</b>	
Color Depth	2 gray levels	<b>IAG0</b>
	16 gray levels	<b>IAG1</b>
	256 gray levels	<b>IAG2</b>

*h, i* = a number from the HEX/Numeric Table

*h* = for X axis a number in the range 0-630  
 for Y axis a number in the range 0-470  
 for width a number in the range 10-640  
 for height a number in the range 10-480

*i* = a number in the range 0-100

ADVANCED IMAGE CAPTURE		
DESCRIPTION		STRING
<b>IMAGE PRESET 2</b>		
<b>Basic Configuration</b>		
Image Format	Bitmap format	<b>IBA0</b>
	JPEG format	<b>IBA1</b>
	TIFF format	<b>IBA2</b>
Resolution	full resolution (640x480)	<b>IBB0</b>
	quarter resolution (320x240)	<b>IBB1</b>
JPEG Quality Factor		<b>IBCg</b>
<b>Advanced Configuration</b>		
Window Dimensions	origin along X axis	<b>IBIh</b>
	origin along Y axis	<b>IBLh</b>
	width	<b>IBMh</b>
	height	<b>IBNh</b>
Brightness	increase	<b>IBO0IBFi</b>
	decrease	<b>IBO1IBF1i</b>
Contrast	increase	<b>IBP0IBEi</b>
	decrease	<b>IBP1IBEi</b>
Zoom	20%	<b>IBH0</b>
	40%	<b>IBH1</b>
	60%	<b>IBH2</b>
	80%	<b>IBH3</b>
	100%	<b>IBH4</b>
	120%	<b>IBH5</b>
	140%	<b>IBH6</b>
	160%	<b>IBH7</b>
	180%	<b>IBH8</b>
200%	<b>IBH9</b>	
Color Depth	2 gray levels	<b>IBG0</b>
	16 gray levels	<b>IBG1</b>
	256 gray levels	<b>IBG2</b>

**g, h, i** = a number from the HEX/Numeric Table

**g** = a number in the range 000-100

**h** = for X axis a number in the range 0-630  
 for Y axis a number in the range 0-470  
 for width a number in the range 10-640  
 for height a number in the range 10-480

**i** = a number in the range 0-100

ADVANCED IMAGE CAPTURE		
DESCRIPTION		STRING
<b>IMAGE PRESET 3</b>		
<b>Basic Configuration</b>		
Image Format	Bitmap format	<b>ICA0</b>
	JPEG format	<b>ICA1</b>
	TIFF format	<b>ICA2</b>
Resolution	full resolution (640x480)	<b>ICB0</b>
	quarter resolution (320x240)	<b>ICB1</b>
JPEG Quality Factor		<b>ICCG</b>
<b>Advanced Configuration</b>		
Window Dimensions	origin along X axis	<b>IC1h</b>
	origin along Y axis	<b>ICLh</b>
	width	<b>ICMh</b>
	height	<b>ICNh</b>
Brightness	increase	<b>ICO0ICFi</b>
	decrease	<b>ICO1ICF1i</b>
Contrast	increase	<b>ICP0ICEi</b>
	decrease	<b>ICP1ICEi</b>
Zoom	20%	<b>ICH0</b>
	40%	<b>ICH1</b>
	60%	<b>ICH2</b>
	80%	<b>ICH3</b>
	100%	<b>ICH4</b>
	120%	<b>ICH5</b>
	140%	<b>ICH6</b>
	160%	<b>ICH7</b>
	180%	<b>ICH8</b>
200%	<b>ICH9</b>	
Color Depth	2 gray levels	<b>ICG0</b>
	16 gray levels	<b>ICG1</b>
	256 gray levels	<b>ICG2</b>

***g, h, i*** = a number from the HEX/Numeric Table

***g*** = a number in the range 000-100

***h*** = for X axis a number in the range 0-630  
 for Y axis a number in the range 0-470  
 for width a number in the range 10-640  
 for height a number in the range 10-480

***i*** = a number in the range 0-100

ADVANCED IMAGE CAPTURE		
DESCRIPTION		STRING
<b>IMAGE PRESET 4</b>		
<b>Basic Configuration</b>		
Image Format	Bitmap format	<b>IDA0</b>
	JPEG format	<b>IDA1</b>
	TIFF format	<b>IDA2</b>
Resolution	full resolution (640x480)	<b>IDB0</b>
	quarter resolution (320x240)	<b>IDB1</b>
JPEG Quality Factor		<b>IDCg</b>
<b>Advanced Configuration</b>		
Window Dimensions	origin along X axis	<b>IDIh</b>
	origin along Y axis	<b>IDLh</b>
	width	<b>IDMh</b>
	height	<b>IDNh</b>
Brightness	increase	<b>IDO0IDFi</b>
	decrease	<b>IDO1IDF1i</b>
Contrast	increase	<b>IDP0IDEi</b>
	decrease	<b>IDP1IDEi</b>
Zoom	20%	<b>IDH0</b>
	40%	<b>IDH1</b>
	60%	<b>IDH2</b>
	80%	<b>IDH3</b>
	100%	<b>IDH4</b>
	120%	<b>IDH5</b>
	140%	<b>IDH6</b>
	160%	<b>IDH7</b>
	180%	<b>IDH8</b>
200%	<b>IDH9</b>	
Color Depth	2 gray levels	<b>IDG0</b>
	16 gray levels	<b>IDG1</b>
	256 gray levels	<b>IDG2</b>

**g, h, i =** a number from the HEX/Numeric Table

**g =** a number in the range 000-100

**h =** for X axis a number in the range 0-630  
 for Y axis a number in the range 0-470  
 for width a number in the range 10-640  
 for height a number in the range 10-480

**i =** a number in the range 0-100

## B PROGRAMMING FOR EXPERT USERS

---

This document is addressed to expert users who are familiar with software programming languages and want to define a personalized code formatting. The provided programming language allows creating either simple or complex formatting expressions by means of the basic functions connected together through the following operators: ( , ) , - , + .

The syntax to be used to transmit the expressions to the Gryphon™ D432/D432E is the following:

**\$+ELB<n>formatting expression<ETX>\$-**

where:

- <n> is a number in the range 1-5 corresponding to the format to be defined;
- <ETX> is the conventional character used as terminator of the command;
- the formatting expression uses ASCII characters when containing text strings. For this reason, the string must be inserted between two quotation marks. The following example shows the ASCII conversion of the "ABC" string:

`$+ELB1"414243"+#DS^C$-`

### FUNCTION DESCRIPTION

All the functions and conventions to be used within the formatting expressions are listed below:

FUNCTION NAME	DESCRIPTION
FSTR	Searches for a defined substring by its starting and ending string.
FLSTR	Searches for a defined substring by its starting string and its length.
SSTR	Extracts a defined substring from the original string.
FPOS	Searches for a position of a defined substring within the original string.
LSTR	Returns a string length.
ISTR	Insert a substring in the original string.
RSTR	Substitutes a defined substring contained in the original string with a new one.

CONVENTIONS	DESCRIPTION
+	Concatenates two strings or fields.
-	Deletes a substring or a field from the original string.
#DS	Returns the string which has been decoded by the library.
#F<n>	Returns the result of a format which has been previously defined. The <n> value is in the range 1-4.

## FindStringByStarting&EndingChar (FSTR)

This function has the following syntax:

**FSTR**<source\_string, string\_start, string\_stop, mode>⇒string

This function searches for a substring having a defined starting character ("string\_start") and a defined ending character ("string\_stop") within the "source\_string". It returns the string you searched for, or an empty one in case of failure.

If searching for a substring having characters already known, the "string\_start" and "string\_stop" arguments must share the same value.

The "mode" argument allows managing the starting character ("string\_start") and the ending character ("string\_stop"):

- 0 = include both starting and ending character
- 1 = include only starting character
- 2 = include only ending character
- 3 = discard both starting and ending character

## FindStringByStartingChar&Len (FLSTR)

This function has the following syntax:

**FLSTR**<source\_string, string\_start, len, mode>⇒string

This function searches for a substring having a defined starting character ("string\_start") and a defined length ("len") within the "source\_string". It returns the string you searched for, or an empty one in case of failure.

If searching for a substring having a length already known, the "string\_start" and "string\_stop" arguments must share the same number.

The "mode" argument allows managing the starting character ("string\_start"):

- 0 = include starting character
- 1 = discard starting character



## SelectString (SSTR)

This function has the following syntax:

**SSTR**<source\_string, pos\_start, pos\_end>⇒string

It extracts a substring whose characters are between "pos\_start" and "pos\_end" from the "source\_string".

If "pos\_end" is longer than the "source\_string" length, no error will be generated since the exceeding characters are ignored.

The first character of every string is in position 1.

## FindPosition (FPOS)

This function has the following syntax:

**FPOS**<source\_string, search\_string>⇒position

This function searches for a defined substring within the "source\_string" and returns its position. If the substring is not found, the returned value is 1.

## StringLength (LSTR)

This function has the following syntax:

**LSTR**<string>⇒length

This function returns the length of the defined string.

## StringConcatenation

This function has the following syntax:

string1 + string2⇒string

This function allows concatenating two different strings in order to get a single string as result.

## StringDiscard

This function has the following syntax:

`string1 - string2⇒string`

This function discards all the strings having the same value as "string2" which can be found in "string1". If no "string2" is found within "string1", the result returns "string1".

## InsertString (ISTR)

This function has the following syntax:

`ISTR<source_string, string1, position>⇒string`

This function inserts a new string ("string1") within the "source\_string" and places it in the defined "position".

If the value of the "position" argument is longer than "source\_string" length, "string1" will be placed after the last character of the source string.

## ReplaceString (RSTR)

This function has the following syntax:

`RSTR<source_string, string1, string2>⇒string`

This function searches for "string1" within the "source\_string". All the strings having the same value as "string1" within the "source\_string" will be replaced by "string2".

If no "string1" is found in the "source\_string", the result returns the "source\_string".

## Examples

The string transmitted is "12345abcdef3790" and corresponds to the #DS function, as defined in the programming language.

- 1) expression  $\Rightarrow$  **SSTR<#DS,1,5> + SSTR<#DS,11,15> + SSTR<#DS,6,9>**  
result  $\Rightarrow$  **"12345f3790abcd"**
- 2) expression  $\Rightarrow$  **FSTR<#DS, "616263", "616263", 0> + SSTR<#DS,LSTR<#DS>-3, LSTR<#DS>**  
result  $\Rightarrow$  **"abc3790"**
- 3) expression  $\Rightarrow$  **FSTR<#DS, "616272", "616261", 0>**  
result  $\Rightarrow$  **" " null string**
- 4) expression  $\Rightarrow$  **#DS - FSTR<#DS, "616263", "6566", 0>**  
result  $\Rightarrow$  **"123453790"**

During the format definition the decoded string represented by #DS does not change.

## Using Format Output in Format Definition

The input used by the above functions to define the code formatting usually corresponds to the decoded code (#DS). Actually, the formatting expression of each function can also format the result (output) produced by a preceding code formatting. The format output is represented as follow:

**#F<n>**, where:

<n> = format number in the range 1-4

#F = format output

Being Format 5 not included in other format expression, the format number is in the range 1-4. Furthermore, since a format expression operates upon the output of the preceding formats, the expression defining Format 1 will never contain the result of another format.

## Example

The following expression is used to define Format 3:

**#DS + FSTR<#F2, "6173", "6263", 0>**

The expression input consists of the decoded code and the result produced by Format 2 (#F2).

The FSTR function searches for a defined substring within the #F2 result; then, it concatenates this substring and the decoded code. The result corresponds to #F3 output.

## C CODE IDENTIFIER TABLE

---

**EAN/UPC**



**CODABAR**



**CODE 128**



**EAN 128**



**CODE 93**



**CODE 32**



**CODE 39**



**INTERLEAVED 2 OF 5**



**PDF417**



**MICRO PDF417**



**DATAMATRIX**



**MAXICODE**



**QR**



**AUSTRALIA POST**



**JAPAN POST**



**POSTNET**



**PLANET**



**RSS**



**KIX CODE**



**RM4SCC**



## D HEX AND NUMERIC TABLE

CHARACTER TO HEX CONVERSION TABLE								
char	decimal	hex	char	decimal	hex	char	decimal	hex
NUL	000	00	*	042	2A	U	085	55
SOH	001	01	+	043	2B	V	086	56
STX	002	02	,	044	2C	W	087	57
ETX	003	03	-	045	2D	X	088	58
EOT	004	04	.	046	2E	Y	089	59
ENQ	005	05	/	047	2F	Z	090	5A
ACK	006	06	0	048	30	[	091	5B
BEL	007	07	1	049	31	\	092	5C
BS	008	08	2	050	32	]	093	5D
HT	009	09	3	051	33	^	094	5E
LF	010	0A	4	052	34	~	095	5F
VT	011	0B	5	053	35		096	60
FF	012	0C	6	054	36	a	097	61
CR	013	0D	7	055	37	b	098	62
SO	014	0E	8	056	38	c	099	63
SI	015	0F	9	057	39	d	100	64
DLE	016	10	:	058	3A	e	101	65
DC1	017	11	;	059	3B	f	102	66
DC2	018	12	<	060	3C	g	103	67
DC3	019	13	=	061	3D	h	104	68
DC4	020	14	>	062	3E	i	105	69
NAK	021	15	?	063	3F	j	106	6A
SYN	022	16	@	064	40	k	107	6B
ETB	023	17	A	065	41	l	108	6C
CAN	024	18	B	066	42	m	109	6D
EM	025	19	C	067	43	n	110	6E
SUB	026	1A	D	068	44	o	111	6F
ESC	027	1B	E	069	45	p	112	70
FS	028	1C	F	070	46	q	113	71
GS	029	1D	G	071	47	r	114	72
RS	030	1E	H	072	48	s	115	73
US	031	1F	I	073	49	t	116	74
SPACE	032	20	J	074	4A	u	117	75
!	033	21	K	075	4B	v	118	76
"	034	22	L	076	4C	w	119	77
#	035	23	M	077	4D	x	120	78
\$	036	24	N	078	4E	y	121	79
%	037	25	O	079	4F	z	122	7A
&	038	26	P	080	50	{	123	7B
'	039	27	Q	081	51		124	7C
(	040	28	R	082	52	}	125	7D
)	041	29	S	083	53	~	126	7E
			T	084	54	DEL	127	7F

0



1



2



3



4



5



6



7



8



9





**A**



**B**



**C**



**D**



**E**



**F**



## **AUTOSCAN PATTERN CODE**

---



Datalogic Scanning, Inc.  
959 Terry Street  
Eugene, OR 97402



dichiara che  
declares that the  
déclare que le  
bescheinigt, daß das Gerät  
declare que el

**Gryphon™ D432**  
**Gryphon™ D432E**

e tutti i suoi modelli  
and all its models  
et tous ses modèles  
und seine Modelle  
y todos sus modelos

sono conformi alle Direttive del Consiglio Europeo sottoelencate:  
are in conformity with the requirements of the European Council Directives listed below:  
sont conformes aux spécifications des Directives de l'Union Européenne ci-dessous:  
den nachstehenden angeführten Direktiven des Europäischen Rats:  
cumple con los requisitos de las Directivas del Consejo Europeo, según la lista siguiente:

<b>89/336/EEC EMC Directive</b>	e	<b>92/31/EEC, 93/68/EEC</b>	emendamenti successivi
	and		further amendments
	et		ses successifs amendements
	und		späteren Abänderungen
	y		sucesivas enmiendas

Basate sulle legislazioni degli Stati membri in relazione alla compatibilità elettromagnetica ed alla sicurezza dei prodotti.  
On the approximation of the laws of Member States relating to electromagnetic compatibility and product safety.  
Basée sur la législation des Etats membres relative à la compatibilité électromagnétique et à la sécurité des produits.  
Über die Annäherung der Gesetze der Mitgliedsstaaten in bezug auf elektromagnetische Verträglichkeit und Produktsicherheit entsprechen.  
Basado en la aproximación de las leyes de los Países Miembros respecto a la compatibilidad electromagnética y las Medidas de seguridad relativas al producto.

---

Questa dichiarazione è basata sulla conformità dei prodotti alle norme seguenti:  
This declaration is based upon compliance of the products to the following standards:  
Cette déclaration repose sur la conformité des produits aux normes suivantes:  
Diese Erklärung basiert darauf, daß das Produkt den folgenden Normen entspricht:  
Esta declaración se basa en el cumplimiento de los productos con las siguientes normas:

<b>EN 55022 (CLASS B ITE), AUGUST 1994:</b>	LIMITS AND METHODS OF MEASUREMENTS OF RADIO
<b>AMENDMENT A1 (CLASS B ITE), OCTOBER 2000:</b>	DISTURBANCE CHARACTERISTICS OF INFORMATION
	TECHNOLOGY EQUIPMENTS
<b>EN 55024, SEPTEMBER 1998:</b>	INFORMATION TECHNOLOGY EQUIPMENT
	IMMUNITY CHARACTERISTICS
	LIMITS AND METHODS OF MEASUREMENT

March 1st, 2007

**Australia**

Datalogic Scanning Pty Ltd  
North Ryde, Australia  
Telephone: [61] (2) 9870 3200  
Fax: [61] (2) 9878 8688

**France and Benelux**

Datalogic Scanning Sarl  
LES ULIS Cedex, France  
Telephone: [33].01.64.86.71.00  
Fax: [33].01.64 46.72.44

**Germany**

Datalogic Scanning GmbH  
Darmstadt, Germany  
Telephone: 49 (0) 61 51/93 58-0  
Fax: 49 (0) 61 51/93 58 58

**Italy**

Datalogic Scanning SpA  
Vimercate (MI), Italy  
Telephone: [39] (0) 39/62903.1  
Fax: [39] (0) 39/6859496

**Japan**

Datalogic Scanning KK  
Shinagawa, Tokyo, Japan  
Telephone: 81 (0)3 3491 6761  
Fax: 81 (0)3 3491 6656

**Latin America**

Datalogic Scanning, Inc  
Miami, Florida, USA  
Telephone: (305) 591-3222  
Fax: (305) 591-3007

**Spain and Portugal**

Datalogic Scanning Sarl  
Sucursal en España  
Madrid, Spain  
Telephone: 34 91 746 28 60  
Fax: 34 91 742 35 33

**United Kingdom**

Datalogic Scanning LTD  
Watford, England  
Telephone: 44 (0) 1923 809500  
Fax: 44 (0) 1923 809 505



[www.scanning.datalogic.com](http://www.scanning.datalogic.com)

**Datalogic Scanning, Inc.**

959 Terry Street  
Eugene, OR 97402  
Telephone: (541) 683-5700  
Fax: (541) 345-7140