

## HAMPSHIRE BARROWS.

By L. V. GRINSELL.

### PARTS I AND II.—ADDENDA AND CORRIGENDA.

#### PART I.

On p. 30 I stated that a list of field names indicating the possible former existence of barrows would be included in a future instalment of this paper. In view of the uncertainties of the times I have decided to complete this paper by the present instalment, and in order to save space the list of field names is omitted; in any case most of them are given in Dr. Grundy's papers on Hants charters (*Archaeol. Journal*, Vols. 78, 81, 83, 84).

#### PART II.

30 N.E. **Grateley Disc-barrow** (p. 217). This appears to be the barrow in which bones were recently found (*Hants F.C.*, XIV, p. 270).

59 N.E. **Old Winchester Hill** (West). On p. 229, the quarter-sheet was given in error as 56 N.E. instead of 59 N.E. The site is very important and similar to that at Rockbourne on 54 N.W. (Fig. 4c).

80 N.W. **Setley Plain Disc-barrows**. I forgot to state that an account with excellent plans appeared in Sumner, *New Forest*, pp. 80 ff. and Plan XXII.

### Part III. A List of Hampshire Bowl-Barrows.

#### Introduction.

The arrangement of the following list is based on the 6in. O.S. quarter-sheets arranged numerically. An asterisk (\*) following the name of the parish denotes that the barrow is not marked on the latest edition of 6in. O.S. map prior to 1938. The finder of such a barrow is noted in the 'Other Details' column thus:—

O.G.S.C. = Mr. O. G. S. Crawford, F.S.A.

E. & W. = Messrs. J. R. Ellaway and G. W. Willis of Basingstoke.

G.B.B. = Mr. G. B. Bull of Kingsclere.

L.V.G. = The present writer.

In the case of the first three, the addition of my own initials in brackets indicates that I have visited the site and verified the discovery. In the case of newly-discovered barrows, the latitude and longitude given are only approximate. The measurements of each barrow are almost entirely mine throughout.

Diameter means the diameter of the mound, excluding any ditch that may be present. Unless otherwise stated, air-photo numbers refer to those at the Archaeology Dept., O.S. Office, Southampton. O.S. Southampton indicates that the site has been added in pencil to the 6in. O.S. map at the Archaeology Dept., O.S. Office, Southampton.

The following abbreviations have been used:—

2" Ms. Map = 2" Ms. Map of 1806-8 at O.S. Office, Southampton.

D. = Barrow surrounded by a visible ditch.

H/C. = Barrow has a hollow or dip in the centre, frequently where it has been opened.

Bdry. = Parish boundary.

Sumner, *N.F.* = *Ancient Earthworks of New Forest*, by H. Sumner, 1917.

Wise, *N.F.* = *The New Forest*, by J. R. Wise (Artist's Edn., 1883).

*Wessex from Air* = *Wessex from the Air*, by O. G. S. Crawford and Alex. Keiller, 1928.

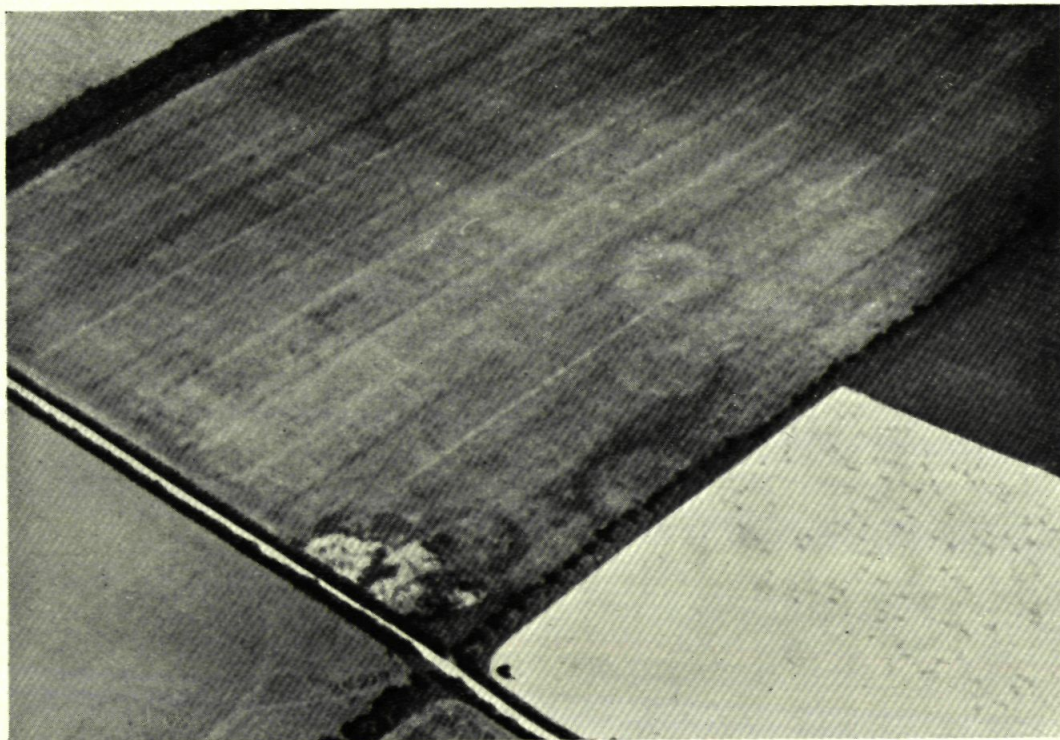
N.D.F.C. = *Transactions of the Newbury District Field Club*.

B.N.S.S. = *Proceedings of the Bournemouth Natural Science Society*.

## A List of Hampshire Bowl-Barrows.

6" O.S. Map	Lat. 51°	Long. W.	Parish	Diam. (paces)	Height (feet)	Other Details
4 N.E.	22' 36"	1° 4' 23"	Mortimer West End	25	5½	On Berkshire bdry. H/C.
8 S.E.	18' 9"	1° 22' 55"	Crux Easton Bdry. of 4 parishes*	24	4½	At cross-roads. H/C.
8 S.E.	18' 52"	1° 22' 57"		Destroyed		Part I, p. 31 (Hilda's hlaew).
8 S.E.	18' 27"	1° 21' 59"	Crux Easton	A doubtful barrow		N.D.F.C. VII, 52-57.
8 S.E.	18' 13"	1° 21' 44"	Woodcote	22	5½	D. Mound mutilated.
8 S.E.	18' 55"	1° 20' 45"	Burghclere	26	8	Planted with firs <i>circa</i> 1934.
8 S.E.	17' 39"	1° 20' 12"	"	33	8	D. No. 2 on Plate V.
8 S.E.	17' 42"	1° 20' 10"	"	30	7	D. No. 3 on Plate V.
8 S.E.	17' 44"	1° 20' 10"	"	30	5	No. 4 on Plate V.
8 S.E.	17' 45"	1° 20' 16"	"	22	1	No. 9 on Plate V.
9 S.W.	17' 48"	1° 20' 8"	"	27	4	No. 5 on Plate V.
9 S.W.	17' 48"	1° 20' 4"	"	40	9	No. 6 on Plate V.
9 S.W.	17' 50"	1° 20' 7"	"	30	6	H/C No. 7 on Plate V. For 2-9, see <i>Hants F.C.</i> IX, 284; <i>N.D.F.C.</i> IV, 186; <i>Proc. Soc. Ant.</i> , 2nd Ser., X, 18-19; Brayley and Britton, <i>Hants</i> , 1805, p. 242; <i>Man</i> , Vol. XIII (C. L. Woolley); Evans, <i>Stone Implements</i> , and Edn., p. 309.
9 S.W.	18' 10"	1° 19' 19"	Litchfield	Small		
9 S.W.	18' 30"	1° 18' 2"	Sydmonton	Small		
9 S.W.	18' 28"	1° 17' 50"	"	Small		
9 S.W.	18' 26"	1° 17' 18"	Ecchinswell	22	3	D.
9 S.E.	17' 22"	1° 14' 47"	Kingsclere*	30	3	G.B.B. (Verified L.V.G.). Has been ploughed.
9 S.E.	18' 31"	1° 13' 51"	"	27	3	E. & W. (L.V.G.). <i>Hants F.C.</i> IX, 284.
10 S.W.	17' 44"	1° 11' 8"	"	24	2	E. & W. (L.V.G.). <i>Hants F.C.</i> IX, 284.
10 S.W.	17' 43"	1° 11' 6"	"	18	1	<i>Hants F.C.</i> IX, 284. E. & W (L.V.G.).
10 S.W.	17' 48"	1° 10' 51"	Hannington*	15	1	E. & W. (Doubtful—L.V.G.). <i>Hants F.C.</i> IX, 284.
12 N.W.	19' 8"	0° 51' 27"	Hartley Wintney*	10	3	<i>Hants F.C.</i> XIII, 70-74.
12 N.E.	20' 10"	0° 48' 46"	Yateley			Possible site of barrow at Hill- field, Round Close. Bucket- urn in Winchester Museum.
14 S.W.	14' 13"	1° 41' 19"	S. Tidworth	34	2	On Wilts bdry. Perhaps a platform-barrow.
14 S.W.	14' 9"— 14' 13"	1° 41' 10"— 1° 41' 15"	"			Nine barrows marked on 6" O.S. sheet (Tidworth Seven Barrows).
14 S.W.	14' 9"	1° 41' 10"	"	Small		L.V.G.
14 S.W.	13' 48"	1° 41' 43"	"	20	3½	On Wilts bdry. Surrounded by tree-ring.
14 S.W.	13' 47"	1° 41' 42"	"	10	1	L.V.G., 30, v. 37. On Wilts bdry. D. Flat top.
15 N.E.	16' 5"	1° 28' 46"	Hurstbourne Tarrant*	9	3½	Blagdon Coppice. Part I, p. 22. H. S. L. Dewar.
16 N.W.	16' 5"	1° 26' 57"	"	10	4	H. S. L. Dewar. <i>Hants F.C.</i> IX, 407, and X, 122.
16 N.W.	16' 20"	1° 26' 0"	? St. Mary Bourne*	Destroyed		Site not known accurately. Stevens, <i>St. Mary Bourne</i> , 1888, p. 69.
16 N.W.	15' 41"	1° 25' 11"	St. Mary Bourne	Small		Doubtful. Hole in centre.
16 N.W.	15' 42"	1° 25' 13"	"	Small		Doubtful.
16 N.E.	16' 20"	1° 20' 11"	Litchfield	28	6	Part I, p. 28 (Folk-lore). D.
16 N.E.	16' 21"	1° 20' 12"	"	15	1	L.V.G.
16 S.W.	15' 23"	1° 28' 1"	Andover*	12	5	H. S. L. Dewar. <i>Hants F.C.</i> , IX, 407-9; X, 121. (Site only approx.)
16 S.W.	14' 18"	1° 26' 15"	"	25	3	<i>Hants F.C.</i> , X, 202 (?).
16 S.W.	14' 20"	1° 26' 10"	"	30	3	<i>Hants F.C.</i> , X, 202 (?).
16 S.W.	15' 22"	1° 24' 31"	St. Mary Bourne	36	4	
16 S.E.	15' 15"	1° 20' 8"	Whitchurch	Large		Larks Barrow.
17 N.W.	15' 45"	1° 19' 5"	"	25	2½	See Part II, p. 198.
17 N.W.	16' 40"	1° 17' 18"	Overton*	20	1	G.B.B. (L.V.G.).
17 N.W.	16' 6"	1° 17' 18"	"	30	3	G.B.B. (L.V.G.).

6° O.S. Map	Lat. 51°	Long. W.	Parish	Diam. (paces)	Height (feet)	Other Details
17 N.W.	16° 40"	1° 16' 32"	Overton*	30	1	G. W. G. Allen (L.V.G.). Part II, Plate VII A.
17 N.W.	16° 6"	1° 16' 35"	"	25	3	G.B.B. (L.V.G.).
17 N.E.	16° 15"	1° 12' 44"	Hannings*			E. and W. High mound in dense wood.
17 N.E.	17° 7"	1° 15' 54"	Overton*			G.B.B. (L.V.G.). Ploughed.
17 N.E.	17° 11"	1° 14' 43"	Kingsclere*	30	2	G.B.B. (L.V.G.).
17 S.W.	15° 15"	1° 20' 8"	Whitchurch	Large		Larks Barrow, on bdry. of 16 S.E.
18 N.W.	17° 0"	1° 10' 56"	Kingsclere	35	2	H/C. Part I, p. 17 (Ibworth).
18 N.W.	16° 23"	1° 11' 44"	"	30	2½	H/C. <i>Hants F.C.</i> , IV, 49.
18 N.W.	15° 36"	1° 11' 7"	Oakley	35	3½	Eastern half ploughed.
18 S.W.	13° 58"	1° 11' 7"	"	20	2	In Bull's Bushes Copse.
18 S.W.	13° 57"	1° 10' 48"	"	24	4	S. of Bull's Bushes Farm.
18 S.W.	14° 6"	1° 10' 51"	Wootton St. Lawrence	30	4	In Bull's Bushes Copse.
18 S.W.	15° 15"	1° 9' 54"	"	Small		<i>Hants F.C.</i> , VIII, 249.
18 S.W.	15° 23"	1° 9' 25"	"	40	4	White Barrow.
18 S.W.	15° 21"	1° 8' 4"	Basingstoke	Nearly destroyed		<i>Hants F.C.</i> , VIII, 248.
18 S.W.	15° 22"	1° 8' 3"	"	"	"	<i>Hants F.C.</i> , VIII, 248.
18 S.W.	14° 48"	1° 8' 15"	"	Partly destroyed	"	<i>Hants F.C.</i> , IV, 47. (May have been a long barrow.)
18 S.W.	14° 0"	1° 8' 37"	"	20	1	N. of Kempshott Park.
18 S.W.	14° 1"	1° 8' 36"	"	28	1½	D. N. of Kempshott Park.
18 S.W.	14° 42"— 14° 53"	1° 8' 42"— 1° 9' 8"	Wootton St. Lawrence			<i>Hants F.C.</i> , V, 57. Sites of five, or perhaps seven, levelled barrows N. of Lone Farm. <i>Hants F.C.</i> , III, 174; Baigent & Millard, <i>Hist.</i> <i>Basingstoke</i> , pp. 194-5, 386, 603, 620, and 629.
18 S.E.	15° 20"	1° 7' 40"	Basingstoke	28	2½	
18 S.E.	15° 19"	1° 7' 38"	"	25	2	
18 S.E.	14° 55"	1° 3' 45"	Winalade			<i>Hants F.C.</i> , IV, 48; VIII, 249. In Hackwood Park.
18 S.E.	14° 56"	1° 3' 43"	"			In field called Aborough Field.
19 N.W.	15° 34"	1° 3' 45"	Mapledurwell	25	1	L.V.G. Oval, 45 paces by 25 paces; ? long barrow, S.W. of the last two.
19 N.W.	15° 34"	1° 1' 43"	"	Vague		S. of Borough Close. <i>Hants</i> <i>F.C.</i> , VIII, 249.
19 N.W.	15° 31"	1° 1' 47"	"			? Ditch indicated by different coloured grass. See p. 364. P. Parsons.
19 N.W.	15° 48"	1° 0' 35"	"	30	5	E. and W. <i>Hants F.C.</i> , VIII, 357.
19 S.E.	14° 54"	0° 58' 5"	Odiham*	16?	Nil	<i>Hants F.C.</i> , IX, 284. E. & W. P. Parsons. See p. 364.
19 S.E.	14° 32"	0° 57' 50"	"			Seven small barrows, only six on O.S. map, at Heath Brow. In front are notice-boards: <i>Old Roman Tumuli!</i> Cockadobby Hill; A. E. Kinch, <i>Farnborough</i> , 1913, p. 5- Nr. Prince Consort's Lbry.
19 S.E.	14° 37"	0° 59' 18"	Greywell*			L.V.G. On Wilts bdry.
19 S.E.	14° 52"	0° 55' 28"	Odiham*	15?	Nil	" On Wilts border.
20 S.E.	14° 11"— 14° 14"	0° 49' 19"— 0° 49' 27"	Cron dall	Small		On Kimpton Down.
21 N.W.	16° 23"	0° 45' 18"	Farnborough			On Pickford Hill. H/C. Sur- rounded by tree-ring.
21 S.W.	15° 16"	0° 46' 10"	Aldershot	22	4	Marked on O.S. as tumuli but I think they are natural rises— L.V.G.
22 N.W.	13° 29"	1° 41' 25"	S. Tidworth*	14	2	H/C.; tree-covered.
22 N.W.	13° 21"	1° 41' 20"	"	25	6	Nine barrows at Barrow Field Clumps; at least two are large. Mozley, T.: <i>Reminis-</i> <i>cences</i> , etc., II, 313.
22 N.E.	13° 3"	1° 37' 47"	Kimpton	15	2	S.W. of Barrow fld. Clumps. L.V.G. Possibly a barrow.
22 N.E.	13° 2"	1° 37' 19"	"			(Other possible barrows near here are on the Ms. 2" map.)
22 N.E.	12° 59"	1° 37' 33"	"			Three barrow-circles on air- photo 7979.
22 N.E.	12° 55"	1° 37' 10"	"			
22 S.E.	11° 2"	1° 38' 40"	Amport	Mutilated		
22 S.E.	10° 42"— 10° 48"	1° 38' 52"— 1° 39' 10"	"			
22 S.E.	10° 32"	1° 39' 15"	Quarley	Large		
22 S.E.	10° 35"	1° 39' 22"	"			
23 N.W.	13° 0"— 13° 10"	1° 35' 20"— 1° 35' 40"	Kimpton*			



*To face page 349.]*

PLATE X.

The Goodworth Clatford Group. 6" O.S. Hants 24 S.W.

*Air-photo by Major G. W. G. Allen, F.S.A.*

6" O.S. Map	Lat. 51°	Long. W.	Parish	Diam. (paces)	Height (feet)	Other Details
23 N.W.	12' 55"	1° 34' 0" (Approx.)	Ampert*	(Site not located exactly)		Crawford, <i>Andover Dist.</i> , p. 62; <i>Arch. Jour.</i> , LXXXIII, p. 101.
23 N.W.	13' 15"	1° 33' 15" (Approx.)	Weyhill*	(Site not located exactly)		Windmill Barrow on plan of 1683 (O.S. Southampton); Williams-Freeman, <i>Field Arch. Hants</i> , 1915, 115-6; Crawford, <i>Andover District</i> , pp. 61-2.
23 N.E.	13' 22"	1° 31' 25"	Penton Mewsey			In grounds of Penton Lodge.
23 N.E.	12' 41"	1° 31' 30"	"	Destroyed		Part I, p. 18 (Mark Lane).
23 S.E.	10' 7"	1° 29' 7"	Goodworth Clatford			Sites of four barrows on Barrow Hill. <i>Wessex from Air</i> , Pl. XXXIV, B.
24 N.W.	13' 24"	1° 27' 33"	Andover*	27?		Circle on O.S. air-photo 5301; <i>Hants F.C.</i> , XIII, 111.
24 N.W.	13' 28"	1° 27' 33"	"			Circle on O.S. photo 5268.
24 N.W.	13' 29"	1° 26' 40"	"			Circle on air-photo 5252, 3.
24 N.W.	12' 41"	1° 27' 4"	"	25	I	Circles on air-photos 5285 and 5304. The first two are certainly barrows—L.V.G.
24 N.W.	12' 42"	1° 27' 3"	"	25	I	
24 N.W.	12' 43"	1° 27' 3"	"	Vague		
24 N.W.	12' 44"	1° 27' 2"	"	Vague		
24 N.W.	12' 44"	1° 27' 2"	"			
24 N.W.	12' 6"	1° 27' 48"	"			
24 N.W.	12' 6"	1° 27' 47"	"			
24 N.W.	13' 23"	1° 25' 10"	Bdry. of three parishes*	14	2	Two circles. <i>Wessex from Air</i> , p. 29. On Bere Hill.
24 S.W.	11' 33"	1° 27' 54"	Up. Clatford*	40	6	Ashtree Barrow (Grundy). Part I, p. 32.
24 S.W.	11' 17"	1° 28' 6"	Goodworth Clatford*	Vague		<i>Wessex from Air</i> , 106; Pl. XIII Air photo 4/78 (Plate X).
24 S.W.	11' 15"	1° 28' 5"	"			
24 S.W.	11' 14"	1° 28' 3"	"			
24 S.W.	11' 12"	1° 28' 6"	"	30	I	" " " "
24 S.W.	11' 12"	1° 28' 4"	"	25	I	" " " "
24 S.W.	11' 12"	1° 28' 1"	"	25	2	" " " "
24 S.W.	11' 5"	1° 28' 4"	"	30	4	Rainbird Clarke and L.V.G. (Found since Map IV was done.)
24 S.W.	11' 58"—	1° 26' 23"—	Longparish*			Four circles, probably barrows. <i>Wessex from Air</i> , p. 26.
25 N.W.	13' 22"	1° 16' 29"	"			Abra Barrow.
25 N.W.	13' 12"	1° 16' 47"	Overton	Large		L.V.G.
25 N.W.	13' 12"	1° 16' 36"	"			L.V.G. Under plough 1936.
25 N.W.	13' 18"	1° 16' 22"	"			Possible barrows; O.G.S.C. and E. and W.
25 N.W.	12' 8"	1° 17' 28"	Freefolk*	40	3	Barrows marked here on I. Taylor's map. Crawford, <i>Andover District</i> , 91.
25 N.W.	12' 4"	1° 17' 20"	"			E. and W.; <i>Hants F.C.</i> , VIII, 249, and IX, 284.
25 N.W.	13' 27"	1° 18' 39"	"			(Circle on R.A.F. Air-photo 1926.)
25 N.E.	13' 11"	1° 13' 0"	N. Waltham*			Three circles observed by R.A.F., 1926. (Note on O.S. map, Southampton.)
25 N.E.	13' 5"	1° 13' 0"	"			Two or three others, invisible on the ground, are on O.S. Southampton (R.A.F. 1926).
25 S.W.	11' 19"	1° 19' 5"	Bullington*			Aubrey's ref., Part I, p. 25. O.G.S.C. (L.V.G.). Probably a barrow.
25 S.W.	10' 56"—	1° 16' 16"—	Micheldever*			W. of Cranbourne Wood.
25 S.W.	10' 57"	1° 16' 19"	"	30	I	Roundwood group: see Pt. II, Bell- and disc-barrows.
25 S.W.	10' 35"	1° 17' 22"	Hunton*			Ploughed; chalky mound enclosed in ditch of brown mould.
25 S.W.	11' 10"	1° 16' 1"	Micheldever*	14	I	
25 S.W.	11' 25"	1° 17' 30"	Wonston	33	6	
25 S.W.	11' 47"	1° 16' 22"—	Laverstoke/Freefolk			
25 S.W.	11' 58"	1° 16' 40"	Laverstoke	15	I	
25 S.W.	11' 30"	1° 16' 47"	"	Small		
25 S.W.	11' 59"	1° 17' 20"	Freefolk	35	8	N. of Freefolk Wood.
25 S.E.	11' 33"	1° 14' 17"	Popham*	22	1½	O.S. Southampton (L.V.G.).
25 S.E.	11' 33"	1° 14' 49"	"	25	6	Among Popham Beacons.
25 S.E.	11' 30"	1° 14' 51"	"	30	6	
26 N.W.	13' 39"	1° 11' 20"	N. Waltham*			<i>Hants F.C.</i> , VIII, 249.
26 N.W.	13' 21"	1° 9' 16"	Dummer	20	I	Doubtful. In Kempshott Pk.
26 N.W.	12' 39"	1° 8' 17"	"	20	I	E. and W. (L.V.G.). <i>Hants F.C.</i> , VIII, 248.
26 N.W.	12' 44"	1° 8' 0"	Farleigh Wallop*	30	3	

6° O.S. Map	Lat. 51°	Long. W.	Parish	Diam. (paces)	Height (feet)	Other Details
26 N.E.	13° 33"	1° 5' 49"	Farleigh Wallop	40	4	Under plough 1937.
26 N.E.	13° 29"	1° 3' 35"	Winslade*			E. & W. <i>Hants F.C.</i> , XII, 88.
26 N.E.	13° 29"	1° 3' 40"	"			E. & W. <i>Hants F.C.</i> , XII, 88.
26 N.E.	13° 30"	1° 4' 2"	Cliddesden*			E. & W. <i>Hants F.C.</i> , VIII, 250.
26 S.W.	11° 50"	1° 10' 58"	Dummer	30	4	At Winchester Plain Clump.
26 S.W.	11° 12"	1° 11' 10"	Popham*			Mound, E. & W. <i>Hants F.C.</i> , IV, 49.
26 S.W.	11° 14"	1° 11' 10"	"			Circle of brown grass, E. & W. Mound, E. & W. <i>Hants F.C.</i> , IV, 49, and VIII, 249.
26 S.W.	11° 16"	1° 11' 10"	"			E. & W. <i>Hants F.C.</i> , IX, 284.
26 S.E.	11° 45" (centre of group)	1° 6' 40"	Nutley*			Three examples, of which two are doubtful.
27 N.W.	12° 1"	1° 0' 32"	Weston Patrick*	18	1	E. & W. (L.V.G.). Rest of group on 27 S.W.
27 N.W.	12° 47"	0° 59' 40"	Upton Grey*	35	2	L.V.G. Found Dec., 1939.
27 N.W.	12° 49"	0° 59' 39"	"	25	4	E. & W. (L.V.G. <i>Hants F.C.</i> , VIII, 248.
27 N.W.	12° 48"	0° 59' 38"	"	25	2	"
27 N.W.	12° 48"	0° 59' 36"	"	22	1½	"
27 N.W.	12° 48"	0° 59' 34"	"	18	½	"
27 N.W.	12° 47"	0° 59' 31"	"	Slight rise		E. & W. (L.V.G.). Doubtful.
27 N.E.	12° 34"	0° 59' 3"	"	25	2½	E. & W. (L.V.G.). Chalky soil.
27 N.E.	12° 36"	0° 59' 4"	"	Vague		E. & W. (L.V.G.). Doubtful. (For both: <i>Hants F.C.</i> , VIII, pp. 248-9.)
27 S.W.	11° 55"	1° 0' 35"	Weston Patrick*	15	1	E. & W. (L.V.G.).
27 S.W.	11° 58"	1° 0' 35"	"	24	2	"
27 S.W.	11° 58"	1° 0' 33"	"	30	4	E. & W. (L.V.G.). Fine example.
27 S.W.	11° 57"	1° 0' 31"	"	20	1½	E. & W. (L.V.G.). For the group, see <i>Hants F.C.</i> , VIII, 257.
27 S.E.	11° 57"	0° 56' 27"	Froyle*	Large		E. & W. <i>Hants F.C.</i> , X, 73.
30 N.E.	9° 55"	1° 39' 22"	Grateley*	20	5	L.V.G. On Quarley bdy
30 N.E.	9° 55"	1° 39' 19"	"	30	3½	Overlaps disc-barrow. See Part I, Fig. 5 and Pl. VII.
30 N.E.	9° 54"	1° 39' 2"	"	Large		L.V.G.
30 N.E.	9° 32"	1° 39' 8"	"	Small		L.V.G.
30 N.E.	9° 34"	1° 39' 7"	"	Large		L.V.G.
30 N.E.	9° 48"	1° 37' 6"	Over Wallop			In small plantation.
30 N.E.	9° 43"	1° 38' 17"	"	25	2	Boar Knoll.
30 N.E.	9° 10"	1° 38' 27"	"	18	2	Ditch 3 paces wide and 1 foot deep. On Map of <i>Celtic Earthworks of Salisbury Plain</i> .
30 N.E.	8° 56"	1° 38' 26"	"	11	2	N. of Martin's Clump.
30 N.E.	8° 41"	1° 38' 33"	"	14	1	L.V.G. Not on Map IV.
30 S.E.	8° 25"	1° 39' 10"	"			Tumulus marked on 2" Ms. map.
30 S.E.	8' 8"	1° 37' 10"	"			Two tumuli on Suddern Hill (2" Ms. map).
30 S.E.	7° 55"	1° 38' 35"	Nether Wallop*			? Two tumuli in tree-clump on 2" Ms. map.
30 S.E.	7° 30"	1° 38' 15"	"			At least three barrows on 2" Ms. Map. I have not seen any of the sites above-mentioned on this sheet; I think they are all inaccessible.
31 N.W.	9° 33"	1° 34' 6"	Over Wallop*	15	1	O.G.S.C. (L.V.G.).
31 N.W.	9° 31"	1° 34' 4"	"	15	1	O.G.S.C. (L.V.G.).
31 N.W.	9° 36"	1° 33' 35"	Abbotts Ann*	Vague rise		Doubtful barrow.
31 N.W.	9° 25"	1° 33' 20"	Nether Wallop*			Circle on air-photo 493. (Nothing visible Sept., 1938—L.V.G.)
31 N.W.	9° 27"	1° 33' 34"	Over Wallop*	22	6	Barrow (now destroyed) on 2" Ms. map; marked as Kent Barrow on Greenwood's map of 1826. This (now built on) is probably the site of Kent's Barrow; see <i>Archaeologia</i> , XXXVI, 184-5; Crawford, <i>Air-Photography for Archaeologists</i> , Plate VI. <i>Wilt's Arch-Mag.</i> , XXI, p. 294.

6° O.S. Map	Lat.	Long. W.	Parish	Diam. (paces)	Height (feet)	Other Details
31 N.E.	8° 57'	1° 20' 59"	Longstock	Large		D. Covered with bushes. Oval mound, ploughed. L.V.G.
31 N.E.	8° 57'	1° 30' 1"	" *			On Wherwell bdry.; L.V.G. L.V.G.
31 N.E.	8° 58'	1° 20' 40"	" *	30	2	L.V.G.
31 N.E.	8° 57'	1° 20' 30"	" *	Small		L.V.G.
31 N.E.	8° 57'	1° 20' 38"	" *	Small		L.V.G.
						The last five are in a group, recently seen by Messrs. Willis and Ellaway, who add three less certain examples.
31 S.E.	8° 30'	1° 32' 31"	Nether Wallop	20	3	<i>Wessex from Air</i> , p. 91.
31 S.E.	8° 13'	1° 31' 58"	" "			On Longstock bdry.
31 S.E.	8° 7'	1° 31' 35"	" "	Large		Ditto. Doubtful. L.V.G.
31 S.E.	7° 57'	1° 31' 27"	" "			On Chattis Hill.
31 S.E.	7° 31'	1° 32' 22"	Broughton	18	1	The Broughton Seven Barrows (nearly levelled). Twelve marked on Ms. 2° Map. See Part I, p. 20; Pt. II, Plate VIII.
31 S.E.	7° 0'	1° 32' 0"	"			O.G.S.C. (L.V.G.).
	(Centre of group)					
31 S.E.	8° 10'	1° 31' 20"	Longstock*	12	1	O.G.S.C. (L.V.G.).
31 S.E.	8° 12'	1° 31' 12"	" *	24	6	
31 S.E.	8° 11'	1° 30' 50"	" *	28	2	O.G.S.C. (L.V.G.).
31 S.E.	8° 8'	1° 30' 46"	" *		9	? Oval. Large.
31 S.E.	8° 15'	1° 30' 20"	" *			Six circles on air-photo, Stockbridge 3364; <i>Wessex from Air</i> , p. 198 and Pl. XXXIVa. Nothing visible 1937 (L.V.G.).
	(centre of group)					O.G.S.C. (L.V.G.). On Houghton bdry.
31 S.E.	7° 36'	1° 31' 15"	" *	Small		About nine barrows on Ms. 2° map. Two or three visible to L.V.G., at sunset, 5th June, 1937.
31 S.E.	7° 50'	1° 31' 0"	" *			Ploughed. These four are on Ms. 2° map. O.G.S.C. (L.V.G.).
	(centre of group)					
31 S.E.	7° 31'	1° 30' 55"	" *	Large		L.V.G., Sept., 1938.
31 S.E.	7° 33'	1° 30' 53"	" *			Air photo, Stockbridge 3364.
31 S.E.	7° 37'	1° 30' 49"	" *			Not visible Sept., 1938.
31 S.E.	7° 40'	1° 30' 47"	" *			
31 S.E.	7° 43'	1° 30' 37"	" *	25	1	
31 S.E.	7° 45'	1° 30' 33"	" *			
31 S.E.	7° 11'	1° 31' 44"	Broughton	30	5	Ditch shown by rabbit-scrapes
31 S.E.	7° 11'	1° 31' 43"	"	30	5	Five barrows on 2° Ms. map.
31 S.E.	7° 10'	1° 31' 20"	Houghton*			Nothing visible 1937.
	(centre of group)					<i>Gent's Mag. Library, Brit. Topog., Hanis</i> , p. 116.
32 N.W.	?	?	Wherwell (?)			Circle on Major Allen's air- photo 4/92, not visible to L.V.G., 26 Sept., 1937.
32 N.E.	9° 30'	1° 20' 50"	Bullington*			Air-photo 5299.
32 N.E.	8° 49'	1° 24' 9"	Barton Stacey	20	1	Buried beneath bushes.
32 N.E.	8° 51'	1° 24' 6"	" "			L.V.G.
32 N.E.	8° 56'	1° 24' 7"	" "	27	3	Partly quarried away; skull of horse visible Sept., 1937.
32 N.E.	8° 52'	1° 24' 7"	" "			Another barrow near here appears on Greenwood's Map of 1826.
						For Mid B.A. urn from this area, see Abercromby, <i>B.A. Pottery</i> , II, Fig. 13, p. 115, and Pl. LXIII.
32 S.W.	7° 29'	1° 26' 7"	Little Somborne*	40	5	O.G.S.C. (L.V.G.). ? Hear- dulf's Hlaew. Part I, p. 33.
32 S.W.	7° 40'	1° 26' 9"	Leckford*			D. Ploughed. O.G.S.C. (L.V.G.).
32 S.W.	7° 46'	1° 25' 49"	" *	18	1½	O.G.S.C. (L.V.G.).
32 S.W.	7° 49'	1° 25' 44"	" *		4	
32 S.W.	7° 49'	1° 25' 42"	" *	22	1	L.V.G.
32 S.E.	8° 27'	1° 22' 34"	Barton Stacey	30	3	Suggestion of ditch.
32 S.E.	8° 30'	1° 22' 33"	" "	30	4	At Crawley Clump. Pl. VII.
32 S.E.	7° 23'	1° 22' 2"	Crawley	30	4	Confluent with saucer-barrow.
32 S.E.	7° 24'	1° 22' 19"	"	25	5	Part II, p. 226.

6° O.S. Map	Lat. 51°	Long. W.	Parish	Diam. (paces)	Height (feet)	Other Details
32 S.E.	7' 43"	1° 20' 40"	Wonston	20	2	Air-photo 5429.
32 S.E.	7' 45"	1° 20' 38"	"	20	2	" " " "
32 S.E.	7' 44"	1° 20' 39"	"	Small	2	" " " " L.V.G.
32 S.E.	6' 49"	1° 22' 8"	Crawley*			Four or five barrows on Air-photos S.A.C.A. 282 and 923. Only one found by L.V.G., 15 paces diam., and 1ft. high. L.V.G.
	(centre of group)					
32 S.E.	6' 48"	1° 21' 35"	"	25	1	
33 N.W.	9' 28"	1° 19' 17"	Wonston	20	4	W. of Cranbourne Clump. H/C.
33 N.W.	9' 28"	1° 19' 15"	"	35	3	Cranbourne Clump. Pt. I, p. 18; Pt. II, p. 196.
33 N.W.	8' 38"	1° 16' 55"	Stoke Charity* and Micheldever*			Weston Colley group. At least 13, and perhaps 15 circles. See Plate XI. Air-photos 5495, 5444, and 5462. Hants F.C., XIII, 293. E. & W.
33 S.W.	7' 11"	1° 18' 32"	Stoke Charity*			
33 S.E.	7' 52"	1° 14' 45"	Micheldever	35	7	Very large hollow in centre A. B. Milner, Micheldever, p. 2. E. & W. Hants F.C., VIII, 249. Two examples, one ditched.
34 N.W.	9' 50"	1° 11' 6"	Woodmancott*			E. & W. (L.V.G.). Hants F.C. VIII, 250.
34 N.W.	8' 42"	1° 10' 40"	Brown Candover*	30	1	
34 N.W.	8' 43"	1° 10' 42"	"	30	4	L.V.G. Large spread barrow.
34 N.W.	8' 43"	1° 10' 38"	"			
34 N.W.	9' 50"	1° 8' 24"	Preston Candover	40	4	
34 N.W.	9' 30"	1° 8' 7"	"	30	4	Not certain whether round barrow or partly destroyed long barrow. Hants F.C., II, pp. 285-7; VII, pp. 112 and 118.
34 N.W.	8' 58"	1° 7' 52"	Chilton Candover*	30	2½	E. & W. (L.V.G.). Hants F.C. IX, p. 386.
34 N.W.	9' 2"	1° 7' 49"	"	40	2½	O.S. Southampton (E. & W.). Three sites, at least one of which may be a saucer-barrow. Part II, p. 227. Hants N.Q., VII, p. 118.
34 N.E.	9' 47"	1° 6' 0"	Bradley*			
	(centre of group)					
34 N.E.	9' 19"	1° 7' 27"	Preston Candover			
34 S.W.	7' 25"	1° 10' 4"	Itchen Stoke	Large		Among dense vegetation.
34 S.W.	7' 26"	1° 10' 4"	"			
34 S.W.	7' 41"	1° 9' 47"	Swarraton*	25	2½	Hants F.C., XIII, 293.
34 S.W.	7' 42"	1° 9' 47"	"	23	3	" " " "
34 S.E.	7' 35"	1° 6' 20"	Old Alresford	25	3	" " " "
34 S.E.	7' 52"	1° 4' 19"	Medstead			
34 S.E.	8' 6"	1° 4' 2"	"	35	6½	
35 N.W.	10' 12"	1° 2' 41"	Bentworth*			E. & W. Hants F.C., X, 73. Rather shapeless.
36 S.W.	6' 59"	0° 53' 2"	Selborne			Shapeless.
36 S.W.	6' 56"	0° 52' 42"	"			
36 S.W.	6' 57"	0° 52' 42"	"			
36 S.W.	7' 10"	0° 52' 30"	"			Group of seven bowl-barrows of average size; that at N.E. is among the best. I am informed by Mr. R. S. Simms of H.M. Inspectorate of Ancient Monuments, that this has been destroyed. On Broxhead Common. Surrounded by tree-ring. Shapeless and doubtful.
	(centre of group)					
36 S.W.	6' 59"	0° 51' 26"	Headley			
36 S.E.	7' 48"	0° 51' 7"	"			
36 S.E.	8' 11"	0° 50' 48"	"			
38 N.E.	5' 34"	1° 37' 46"	Nether Wallop			
38 N.E.	5' 43"	1° 37' 52"	"	25	2	
38 N.E.	5' 45"	1° 37' 51"	"	20	1	
39 N.W.	5' 34"	1° 35' 3"	Buckholt	Large		The Turret (O.S.); Bol's Turret (Sukeley Mss., St. John's Coll., Cambridge); Bald Turret (2° Ms. map). Broughton Hill Clumps. The two unmarked sites are on the Ms. 2° map and are visible to-day (O.G.S.C. and L.V.G.) ? Berrow's Bush (Hants F.C., IX, 137; ? The Throne (Hants N.Q., IX, 49-50).
39 S.W.	5' 1"	1° 33' 46"	E. Tytherley	Large		
39 S.W.	4' 59"	1° 33' 43"	"	"		
39 S.W.	4' 58"	1° 33' 41"	"	Ploughed		
39 S.W.	4' 57"	1° 33' 40"	"	"		
39 S.W.	4' 40"	1° 32' 36"	Bossington	"		





*To face page 352.]*

PLATE XI.

The Weston Colley Group. 6" O.S. Hants 33 N.W.  
*Crown Office Copyright.*

6" O.S. Map	Lat. 51°	Long. W.	Parish	Diam. (paces)	Height (feet)	Other Details
40 N.W.	6' 37"	1° 28' 2"	Stockbridge*	12	1	O.G.S.C. (L.V.G.).
40 N.W.	6' 37"	1° 27' 54"	"	8	1	" " V. slight.
40 N.W.	6' 36"	1° 27' 54"	"	9	1	" " " "
40 N.W.	6' 35"	1° 27' 56"	"	17	3	Ditto. D. H/C.
40 N.W.	6' 35"	1° 27' 52"	"	10	1	O.G.S.C. (L.V.G.). Vague.
40 N.W.	6' 40"	1° 27' 50"	"	14	1	" " " "
40 N.W.	6' 40"	1° 27' 48"	"	6	2	Hants F.C., XIII, 252-3. D.
40 N.W.	6' 43"	1° 27' 41"	"	10	1	O.G.S.C. (L.V.G.).
40 N.W.	6' 37"	1° 27' 34"	"	15	1	" " " "
40 N.W.	6' 36"	1° 27' 38"	"	9	1	The only one in the group marked on O.S.
40 N.W.	6' 44"	1° 27' 29"	"	9	1½	These were found by Drs. J. F. S. Stone and N. Gray Hill. For the first, see <i>Ant. Jour.</i> , Jan. 1940, pp. 39-51 (a very important excavation). O.G.S.C. (L.V.G.).
40 N.W.	6' 42"	1° 27' 27"	"	16	2	
40 N.W.	6' 39"	1° 27' 21"	"	9	1½	
40 N.W.	6' 39"	1° 27' 16"	"	13	2	
40 N.W.	6' 36"	1° 27' 39"	"	15	1	O.G.S.C. (L.V.G.).
40 N.W.	6' 35"	1° 27' 40"	"	12	3	Ditto. D. Slight H/C. A good example.
40 N.W.	5' 9"	1° 25' 43"	King's Somborne*			Marked on 2" Ms. map. Nothing definite—L.V.G.
40 N.W.	5' 8"	1° 24' 26"	Sparsholt*	35	1	Air-photo SACA 945.
40 N.W.	5' 8"	1° 24' 24"	"	35	3½	Ditto.
40 N.W.	5' 9"	1° 24' 21"	"	25	2½	Ditto.
40 N.W.	5' 10"	1° 24' 20"	"	20	1	Ditto. Not well defined.
40 N.E.	6' 47"	1° 21' 37"	Crawley*			? Twin barrow confluent with saucer-barrow, on bdry. of 32 S.E. Pt. II, plate VI b, Fig. 4 d, and p. 227.
40 N.E.	6' 21"	1° 21' 36"	Littleton		7	Oval (24 by 36 paces).
40 N.E.	5' 5"	1° 20' 43"	"	18	3½	H/C. S.W. of disc-barrow.
40 S.W.	4' 59"	1° 24' 35"	Sparsholt*		1	Oval (14 by 20 paces). L.V.G.
40 S.W.	3' 22"	1° 27' 46"	King's Somborne*	18	6	Large ditch. "Dirty Mount."
40 S.W.	3' 37"	1° 26' 14"	Ashley*	Large		O.G.S.C. (L.V.G.).
40 S.W.	3' 35"	1° 26' 14"	"	"		" " " "
40 S.W.	3' 35"	1° 26' 10"	"	"		" " " "
40 S.W.	3' 32"	1° 25' 29"	Farley Chamberlayne	33	10	Farley Mount. D. <i>Wessex from Air</i> , p. 102 and Pl. XII; Shore, T. W., <i>Hants Papers</i> , pp. 274-9; Rev. E. A. Downman, <i>Brit. Mus. Add. Mss.</i> , 37972. Pt. I of the present paper, pp. 22, 26.
40 S.W.	3' 39"	1° 24' 38"	Sparsholt	24	5½	D. Has been known as Robin Hood's Barrow, and Skilling's Barrow. <i>Hants F.C.</i> , III, 201. Shore, <i>Hants Papers</i> , 341-2.
40 S.W.	4' 48"	1° 27' 30"	King's Somborne*	40	2	O.G.S.C. 'Large flattened mound.' (? Natural rise—L.V.G.)
40 S.E.	4' 32"	1° 24' 1"	Sparsholt*	40	2	L.V.G.
40 S.E.	4' 38"	1° 24' 1"	"	20	1	Air-photo SACA 917. L.V.G.
40 S.E.	4' 38"	1° 24' 0"	"	20	1	Ditto. L.V.G.
41 N.E.	6' 17"	1° 14' 37"	Itchen Abbas*			E. & W. (Letter 15, v. 38).
41 N.E.	6' 24"	1° 12' 36"	Itchen Stoke*	10	1	L.V.G. D. H/C.
41 N.E.	6' 21"	1° 12' 22"	"			Three large barrows, each 20-30 paces diam., and 3-4ft. high, marked on O.S., and three smaller ones added to 6" O.S. map at Southampton.
41 S.W.	3' 38"	1° 17' 13"	Chilcomb	12	1½	H/C.
41 S.W.	3' 38"	1° 17' 12"	"	15	1½	L.V.G.
41 S.W.	3' 38"	1° 17' 11"	"	13	6	Steep and conical; flat top.
41 S.W.	3' 38"	1° 17' 10"	"	17	6	Ditto.
41 S.W.	3' 38"	1° 17' 9"	"	22	6½	Ditto.
41 S.E.	3' 29"	1° 15' 54"	"			Two of last three figured in A. G. Andrewes, <i>Chilcomb</i> , 1906, p. 56.
42 N.W.	5' 36"	1° 8' 51"	Bdry. of three parishes*	12	1	Mound shows many flints. Shapeless mound. Wibba's barrow (?). Part I, p. 33.
42 N.E.	5' 32"	1° 4' 2"	Ropley	24	3½	Under plough. M. S. Hagen, <i>Old Ropley</i> , 1929, pp. 48-9 (photo).

6" O.S. Map	Lat. 51°	Long. W.	Parish	Diam. (paces)	Height (feet)	Other Details
42 S.W.	?	?	Cheriton*			For possible sites see Part I, p. 28.
43 N.W.	5' 40"	0° 59' 39"	Newton Valence*	30	3	O.G.S.C. On 1" O.S., 5th Edn.
43 N.W.	5' 22"	0° 59' 45"	E. Tisted*			O.G.S.C. (approx. site only).
43 S.E.	3' 48"	0° 57' 17"	Priors Dean*			O.G.S.C. (approx. site only).
44 N.W.	6' 31"	0° 53' 39"	Selborne	30	5	In modern square tree-ring (?).
44 N.W.	6' 8"	0° 52' 18"	"	35	8	
44 N.W.	6' 9"	0° 52' 7"	"	27	6	D., 3 paces wide and 1ft. deep.
44 N.W.	6' 8"	0° 52' 3"	"	24	6	
44 N.W.	5' 45"	0° 52' 46"	"	24	6	In tree-ring.
44 S.W.	3' 44"	0° 51' 20"	Liss	30	30	In tree-ring.
44 S.W.	4' 31"	0° 51' 27"	Selborne	25	5	
44 S.W.	4' 30"	0° 51' 34"	Greattham			
44 S.W.	4' 54"	0° 51' 42"	Selborne	25	6	In Brimstone Enclosure.
44 S.W.	4' 55"	0° 51' 36"	"	22	5	" " "
44 S.W.	4' 55"	0° 51' 31"	"	22	4½	" " "
44 S.W.	4' 56"	0° 51' 31"	"	25	5	" " "
44 S.W.	4' 42"	0° 52' 15"	"	15	4	Woolmer Down group.
44 S.W.	4' 43"	0° 52' 16"	" *	10	2	" " " L.V.G.
44 S.W.	4' 43"	0° 52' 17"	"	13	3	" " " "
44 S.W.	4' 44"	0° 52' 18"	"	14	3½	" " " "
44 S.W.	4' 45"	0° 52' 19"	"	24	5½	" " " D.
44 S.W.	4' 44"	0° 52' 12"	"	26	5	" " " "
44 S.W.	4' 54"	0° 52' 50"	"	25	3	Regency House group.
44 S.W.	4' 55"	0° 52' 40"	" *	9	1½	H/C. Ditto. L.V.G.
44 S.W.	4' 56"	0° 52' 48"	" *	18	3½	Regency Hse. group. L.V.G.
44 S.W.	4' 57"	0° 52' 48"	" *	30	6	" " " "
44 S.W.	4' 57½"	0° 52' 47"	" *	20	3	" " " L.V.G.
44 S.W.	4' 57½"	0° 52' 45"	" *	14	2½	" " " L.V.G.
44 S.W.	4' 58"	0° 52' 44"	" *	14	3	" " " "
44 S.W.	4' 58½"	0° 52' 43½"	" *	12	2½	Regency Hse. group. Confluent with the next.
44 S.W.	4' 59"	0° 52' 43"	"	25	6	Regency Hse. group.
44 S.E.	4' 45"	0° 51' 1"	"	22	4	On Long Down.
44 S.E.	4' 3"	0° 50' 25"	" *	25	3½	In modern stone wall. L.V.G.
44 S.E.	4' 3"	0° 50' 28"	" *	26	6	Ditto. L.V.G. D. (? modern).
44 S.E.	3' 43"	0° 50' 54"	" *	17	3½	L.V.G. Weaver's Down.
44 S.E.	3' 42"	0° 50' 53"	" *	23	6	L.V.G. Weaver's Down; in modern circular stone wall.
44 S.E.	3' 57"	0° 48' 44"	Bramshott*	38	4½	L.V.G. ? D. With trees.
46 S.E.	50°					D.
46 S.W.	59' 46"	1° 54' 10"	Martin	28	4	Oval (25 by 35 paces); on Wilts bdry.
46 S.W.	59' 48"	1° 49' 34"	Whitsbury			
46 S.W.	51°					
49 N.W.	0' 14"	1° 50' 49"	"	18	4	On Rockbourne bdry.
49 N.W.	(?) (?)	(?) (?) (?)	Michelmersh*			S. T. Percival. (W. of Bull Grove Copse.)
49 N.E.	2' 55"	1° 20' 44"	Winchester	12	3	On Compton bdry. <i>Hants F.C.</i> , XII, 9-10. In a private garden.
49 N.E.	2' 23"	1° 21' 0"	Compton	18	3	H/C.
49 N.E.	2' 24"	1° 20' 59"	"	30	8½	H/C. A fine example.
49 S.E.	0' 4"	1° 23' 21"	Eastleigh			Four small round barrows on Cranbury Common and a single one to S.E. See Pt. I, p. 20; <i>Hants Chronicle</i> , 22nd June, 1912; <i>Wheeler's Hants Mag.</i> , 1828, p. 491. (Eleven barrows originally ?)
49 S.E.	50°					
49 S.E.	59' 52"	1° 23' 3"	"	11	2	
50 N.W.	51°					
50 N.W.	2' 10"	1° 19' 59"	Compton			H/C.
50 N.W.	2' 11"	1° 19' 58"	"			H/C.
50 N.W.	2' 12"	1° 19' 26"	"			Much ploughed down.
50 N.E.	2' 40"	1° 12' 8"	Titchborne*	17	4	O.S. Southampton (L.V.G.). ? On positive lynchet.
50 N.E.	1' 46"	1° 12' 28"	Cheriton	13	3	H/C.
50 N.E.	3' 11"	1° 15' 10"	Chilcomb*	25	3½	L.V.G. Doubtful.
50 N.E.	2' 59"	1° 15' 21"	"	25	6	D. H/C.
50 N.E.	3' 16"	1° 14' 18"	Avington*	20	1	L.V.G. V. slight ditch.
50 N.E.	2' 48"	1° 15' 3"	Morestead*	9	1	J. P. Williams-Freeman
50 N.E.	2' 47½"	1° 15' 1"	" *	9	1	(L.V.G.).
50 N.E.	2' 47"	1° 15' 0"	"	20	2	
50 N.E.	2' 18"	1° 15' 38"	" *	12	1	2" Ms. map.

6" O.S. Map	Lat. 51°	Long. W.	Parish	Diam. (paces)	Height (feet)	Other Details
50 N.E.	1° 95"	1° 15' 18"	Morestead*		3½	Oval (22 by 17 paces) L.V.G.
50 N.E.	2° 25"	1° 14' 36"	"	12	3	L.V.G.
50 N.E.	2° 2"	1° 14' 38"	"	22	3	2" Ms. Map (L.V.G.).
50 N.E.	2° 0"	1° 14' 32"	"	30	3	Ditto (L.V.G.).
50 S.W.						Two barrows (? or more) on O.S. map, Southampton, between Twyford and 'The Firs,' Large.
51 N.W.	2° 46"	1° 9' 12"	Hinton Ampner			
51 N.W.	2° 46"	1° 9' 10"	"			"
51 N.W.	2° 47"	1° 9' 10"	"			"
51 N.W.	2° 47"	1° 9' 8"	"			"
51 N.W.	2° 16"	1° 8' 46"	Kilminster*			Large and mutilated.
51 N.W.	2° 15"	1° 8' 44"	"	Large		Raeling Beorgas of A/S. charter; Pt. I, p. 33.
51 N.W.	2° 13"	1° 8' 41"	"			O.G.S.C. and Rev. A. B. Milner found the first three; L.V.G. the 4th (doubtful).
51 N.W.	2° 11"	1° 8' 38"	"			'Foure Borroughes' A.D. 1616.
51 N.E.	2° 37"	1° 6' 49"	Hinton Ampner*			Midmost barrow(s). Part I, p. 34.
51 N.E.	2° 37"	1° 6' 47"	"			O.G.S.C. (L.V.G.). Doubtful.
51 N.E.	2° 8"	1° 7' 32"	"			Pt. I, p. 18. Times, 1, x, 30.
51 N.E.	1° 50"	1° 6' 55"	"			A. B. Milner and O.G.S.C.
51 N.E.	1° 49"	1° 6' 51"	"			On Warnford bdy. Pt. I, 34.
51 N.E.	1° 46"	1° 6' 45"	"	35	12	Slight ditch.
51 N.E.	1° 46"	1° 6' 23"	"	20	10	"
51 N.E.	1° 46"	1° 6' 22"	"	20	10	"
51 N.E.	1° 45"	1° 6' 21"	"	25	12	" H/C.
51 N.E.	1° 41"	1° 6' 18"	West Meon*	40	10	On Warnford bdy.
51 N.E.	1° 45"	1° 6' 10"	"	Large		West Meon Hut group.
51 N.E.	1° 44"	1° 4' 45"	"			"
51 N.E.	1° 44"	1° 4' 48"	"			"
51 N.E.	1° 46"	1° 4' 40"	"			"
51 N.E.	1° 45"	1° 4' 37"	"	V. large		"
51 N.E.	1° 46"	1° 4' 35"	"	22	8	"
51 N.E.	1° 46½"	1° 4' 33"	"	20	4	" Damaged group.
51 N.E.	1° 47"	1° 4' 31"	"	22	7	" Damaged.
51 N.E.	1° 51"	1° 4' 43"	"			Doubtful (slight rise).
51 N.E.	1° 49"	1° 4' 22"	"	20	1	S.E. of W. Meon Hut.
51 N.E.	1° 47"	1° 4' 18"	"			(?) Doubtful—L.V.G.
51 N.E.	1° 52"	1° 4' 17"	"			"
51 N.E.	1° 46"	1° 3' 52"	Privett*			"
51 S.W.	0° 57"	1° 11' 3"	Beauworth	36	7	Nearly all on 51 N.E. found by O.G.S.C.
51 S.W.	0° 58"	1° 10' 52"	Kilminster*	12	1½	Millbarrow. Pt. I, p. 34.
51 S.W.	0° 48"	1° 10' 45"	Exton	15	2	L.V.G.
51 S.W.	0° 50"	1° 10' 22"	Kilminster	17	3½	In Preshaw Park.
51 S.W.	0° 50"	1° 10' 20"	"			(?) Used as windmill-stead.
51 S.W.	0° 47"	1° 8' 25"	Warnford			Three confluent barrows, only one on O.S. Placed W.-E. Another on Greenwood's map, 1826.
51 S.W.	50°					
51 S.W.	59° 53"	1° 8' 13"	Exton	16	3	D. (?) Bank outside ditch.
51 S.W.	59° 53"	1° 8' 10"	"	6	½	L.V.G.
51 S.W.	59° 53"	1° 8' 9"	"	6	6	"
51 S.W.	59° 52"	1° 8' 6"	"	8	1	"
51 S.E.	50°					
51 S.E.	0° 22"	1° 5' 51"	Warnford*	18	5	H/C. On W. Meon bdy. Mearc beorg; Pt. I, p. 34.
52 N.W.	2° 53"	1° 2' 52"	Privett			The Jumps, or Devil's Jumps; on W. Tisted bdy. Hants Antiquary, 1, 79; Williams-Freeman, Field Arch., 1915, p. 293.
52 N.W.	2° 53½"	1° 2' 50"	"			H/C. Soil clayey.
52 N.W.	2° 54"	1° 2' 49"	"			The Slade barrow; Pt. I, 18.
52 N.W.	2° 54½"	1° 2' 48½"	"			Mutilated.
52 N.W.				35	2	O.S. Southampton (L.V.G.).
52 N.W.				35	2	"
52 N.W.				30	6	H/C. Ditch on W. "
52 S.W.	1° 35"	1° 1' 40"	East Meon			Fine and high—O.G.S.C.
52 S.W.	1° 34"	1° 1' 40"	"			"
52 S.W.	1° 33"	1° 1' 41"	"			Flat—O.G.S.C., 17th Nov., 1923.

6" O.S. Map	Lat. 51°	Long. W.	Parish	Diam. (paces)	Height (feet)	Other Details
52 S.W.	1' 2"	1° 0' 40"	Langrish*			O.G.S.C. (L.V.G.).
52 S.W.	1' 3"	1° 0' 39"	"	26	8	
52 S.W.	0' 58"	1° 0' 37"	"	Large		O.G.S.C. (L.G.V.). Probable (O.G.S.C.—L.V.G.) (?) Barrow or lynchet-corner (O.G.S.C.—L.V.G.).
52 S.W.	0' 55"	1° 0' 15"	Froxfield*			
52 S.W.	1' 33"	0° 59' 31"	"			
52 S.W.	0' 36"	1° 2' 24"	East Meon*			
52 S.W.	0' 48"	1° 2' 15"	"			Spread (O.G.S.C.). Barrows? Air-photo 9617. (approx.)

## PETERSFIELD HEATH GROUP (6" O.S. 52 SE/53 SW).

(Numbered as on plan, Fig. 7).

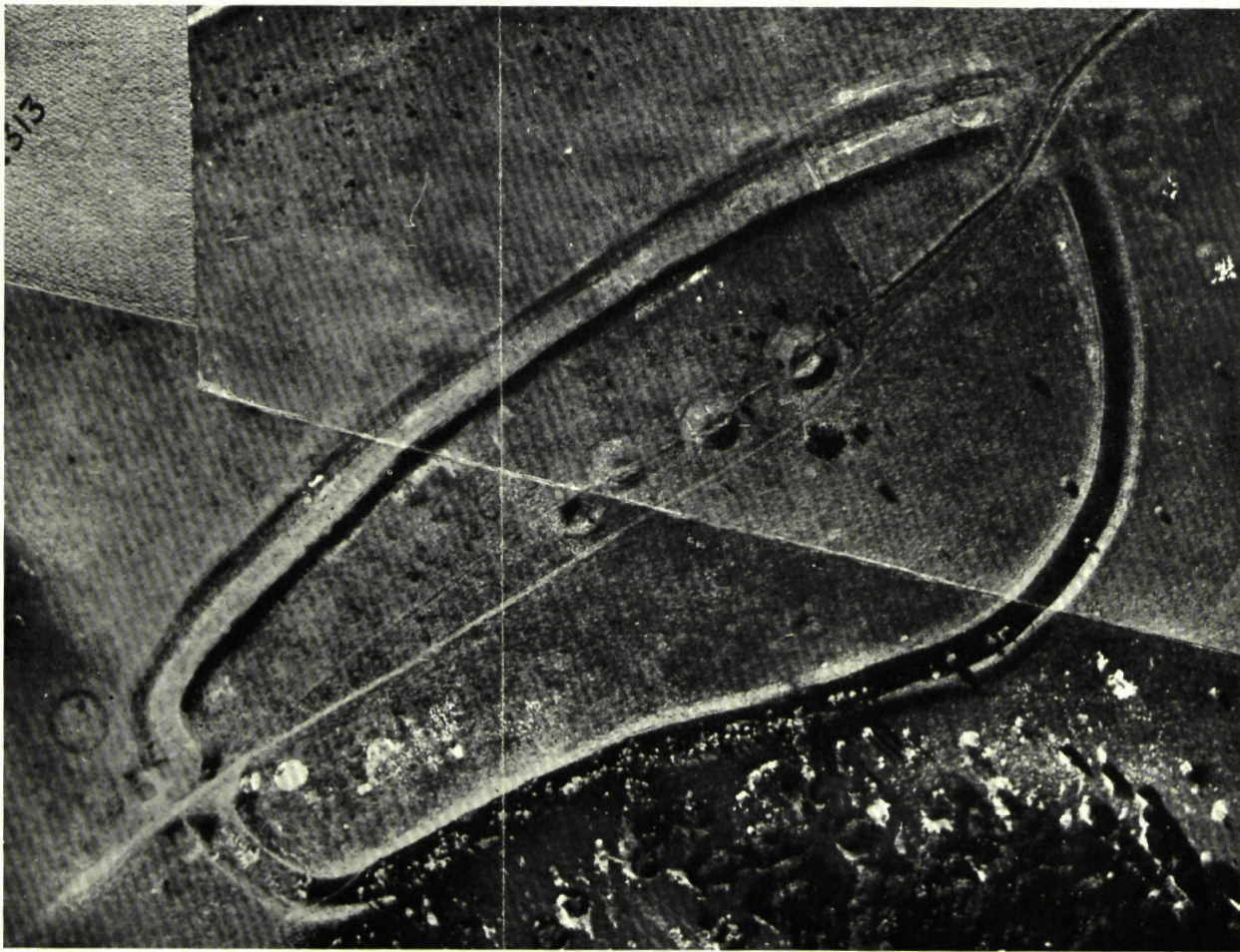
No.	Diam. (paces)	Height (feet)	Details	No.	Diam. (paces)	Height (feet)	Details	No.	Diam. (paces)	Height (feet)	Details
1.	(Bell; Part II, p. 210.)			8.	48 by 30	7	Oval.	15.	25	4	Trees.
2.	25	4½	Trees.	9.	20	6		16.	(Saucer; Pt. II, p. 228.)		
3.	33	8	D. H/C.	10.	32	6		17.	(Saucer; Pt. II, p. 228.)		
4.	(Disc; Pt. II, p. 221.)			11.	33	6½	Trees.	18.	25	2½	Trees.
5.	35	10	Trees. D.	12.	(Saucer; Pt. II, p. 228.)			19.	26	1½	D.
6.	32	6	Trees.	13.	36	8		20.	30	4½	Trees.
7.	35	7½	Trees.	14.	(Saucer; Pt. II, p. 228.)			21.	44 by 25.2		Oval.

NOTES.—7, Worked flints therefrom in Piggott collection. 5, Perhaps a bell; berm on S.E. 13, Known as Music Hill, from bandstand formerly thereon. 19, Worked flints in Piggott collection; mound truncated.

Several more barrows appear on O.S. 1" map, 1st Edn., 1813; also on Ms. 2" map. See *Arch. Journal*, XIII, p. 412; Evans, *Stone Imp.*, 2nd Edn., p. 468; *Hants F.C.*, IX, p. 411.

6" O.S. Map	Lat. 51°	Long. W.	Parish	Diam. (paces)	Height (feet)	Other Details
54a N.W.	59° 21"	1° 57' 20"	Martin*			Not visible. Pt. I, p. 34.
54a N.E.	58° 48"	1° 56' 40"	"	16	3	L.V.G.
54a N.E.	58° 41"	1° 56' 48"	"	11	1½	"
54a N.E.	58° 35"	1° 56' 18"	"	16	1	" Doubtful.
54a N.E.	58° 11"	1° 55' 46"	"			Air-photo SACA 280. Search-
54a N.E.	58° 11"	1° 55' 43"	"			ed for in vain by L.V.G. 1938.
54a N.E.	58° 10"	1° 55' 51"	"	9	2	H/C., exposing flints.
54a N.E.	58° 9"	1° 55' 51"	"	20	4	Ditch on S. H/C.
54a N.E.	58° 8"	1° 55' 51"	"	20	3	
54a S.E.	57° 43"	1° 55' 16"	"	20	4	D. H/C.
54a S.E.	57° 43"	1° 55' 15"	"	20	6	
54a S.E.	57° 43"	1° 55' 6"	"	14	3½	D. and outer bank. H/C.
54a S.E.	57° 45"	1° 55' 3"	"	12	3	D. H/C.
54a S.E.	57° 53"	1° 54' 51"	"	15	3½	Slight ditch.
54a S.E.	57° 51"	1° 54' 37"	"	14	3	D.
54a S.E.	57° 51"	1° 54' 36"	"	10	2	H/C.
54a S.E.	57° 53"	1° 54' 27"	"	30	10	H/C. A fine example.
54 N.W.	58° 45"	1° 52' 40"	Toyd Farm	Large		Fine.
54 N.W.	58° 47"	1° 52' 35"	"	Small		L.V.G. Hoare, <i>Anc. Wilts</i> , Stn. VII.
54 N.W.	58° 48"	1° 52' 35"	"	Large		
54 N.W.	58° 18"	1° 52' 36"	Damerham*	Large		L.V.G. Hoare, <i>Anc. Wilts</i> , Stn. VII.
54 N.W.	58° 20"	1° 52' 23"	"	Large		
54 N.W.	58° 10"	1° 52' 23"	"	Small		L.V.G. Hoare, <i>Anc. Wilts</i> , Stn. VII.
54 N.W.	58° 18"	1° 52' 24"	"	Small		L.V.G. Hoare, <i>Anc. Wilts</i> , Stn. VII.
54 N.W.	58° 17"	1° 52' 21"	"	Large		
54 N.W.	58° 3"	1° 52' 15"	"	15	3	H/C.
54 N.W.	59° 34"	1° 51' 30"	Rockbourne*	12	2	L.V.G.
54 N.W.	59° 42"	1° 50' 46"	"	(Site only)		
54 N.W.	59° 43"	1° 50' 45"	"	"		B.A. urn (part of) and barbed and tanged arrow-head from ditch: Sumner, <i>Excav. on</i> <i>Rockbourne Down</i> , pp. 15-16.





*To face page 357.]*

PLATE XII.

*[Crown Office Copyright.]*

Camp and Barrows on Old Winchester Hill. 6" O.S. Hants 59 N.E.

This photograph, taken 25. x . 22, was one of the first archaeological air-photographs taken in this country.

6° O.S. Map	Lat. 51°	Long. W.	Parish	Diam. (paces)	Height (feet)	Other Details
54 N.W.	59' 19"	1° 51' 2"	Rockbourne			D.
54 N.W.	59' 18"	1° 50' 58"	"	16	2½	
54 N.W.	59' 19"	1° 50' 58"	"	18	2	
54 N.W.	59' 20"	1° 50' 57"	"	18	3	
54 N.W.	59' 16"	1° 50' 53"	"			L.V.G.
54 N.W.	59' 15"	1° 50' 55"	"			Oval; Pt. II, Fig. 4c.
54 N.W.	59' 14"	1° 50' 57"	"	12	1	Nearly levelled.
54 N.W.	59' 15"	1° 50' 57"	"	16	2	D.
54 N.W.	59' 11"	1° 50' 55"	"			D.
54 N.W.	59' 9"	1° 50' 56"	"			D.
54 N.W.	59' 7½"	1° 50' 57½"	"	Small		D.
54 N.W.	59' 7"	1° 50' 58"	"	Small		L.V.G.
54 N.W.	59' 6"	1° 50' 59"	"			
54 N.W.	59' 6"	1° 50' 51"	"			Three very flat circles re- sembling platform-barrows.
54 N.W.	59' 9"	1° 50' 41"	"	20	6	
54 N.W.	58' 53"	1° 50' 59"	"	24	1½	Hoare, <i>Anc. Wilts</i> , Stn. VII (L.V.G.).
54 N.W.	58' 52"	1° 49' 32"	Whitsbury			Ditto. Ploughed.
54 N.W.	59' 10"	1° 49' 41"	"	15	2½	
54 N.W.	59' 17"	1° 49' 34"	"			Almost destroyed.—L.V.G.
54 N.E.	59' 28"	1° 48' 23"	Breamore			Three (perhaps four) among dense vegetation on Gallowes Hill. (Four on Hoare, <i>Anc. Wilts</i> , Stn. VII.)
54 N.E.	(centre of group)					With remains of tree-ring. S.E. of Mizmaze.
54 N.E.	59' 6"	1° 48' 14"	"	Small		Hoare, <i>Anc. Wilts</i> , Stn. VII Map).
54 N.E.	58' 51"	1° 47' 55"	"	24	3	
54 N.E.	58' 46"	1° 47' 51"	"	Vague		
55 S.W.	57' 35"	1° 41' 47"	Ashley Walk	18	3	Jacob's Barrow (Wilts. bdry.). The Butts (five small barrows; only four on O.S.). Wise, <i>N.F.</i> , p. 209; Pt. I, p. 18.
55 S.W.	56' 22"	1° 41' 42"	"			Landford Barrow; Pt. I, p. 20.
55 S.W.	(centre of group)					
55 S.E.	57' 27"	1° 36' 41"	Bramshaw E.* (on Plaitford bdry.)	9	1½	
55 S.E.	56' 28"	1° 38' 48"	Bramshaw	Small		
55 S.E.	56' 26"	1° 38' 47"	"	"		L.V.G.
55 S.E.	56' 24"	1° 38' 48"	"	Large		H/C.
55 S.E.	56' 22"	1° 38' 47"	"	11	2	Two, same size, touching.
56 S.W.	57' 45"	1° 36' 18"	Plaitford*	11	4	Plaitford barrow; Pt. I, p. 20.
56 S.W.	56' 34"	1° 35' 33"	Bramshaw E.*			Four small barrows in modern trench; only three on O.S.
56 S.W.	56' 32"	1° 35' 40"	"	26	4	Ditched.
58 N.E.			Bishop's Waltham			O.S. air-photo 6868. <i>Hants N.Q.</i> , VI, 67.
59 N.W.	59' 5"	1° 10' 50"	Corhampton	40	5	<i>Hants F.C.</i> , VI, 253-4; Part I, p. 18. The first site may have a barrow adjoining to S.W.
59 N.W.	59' 3"	1° 10' 50"	"	28	1	
59 N.W.	59' 3"	1° 10' 54"	"	25	2	
59 N.W.	59' 3"	1° 10' 56"	"	44	5	
59 N.W.	58' 10"	1° 10' 22"	Droxford			In Hazelholt Park.
59 N.W.	58' 12"	1° 9' 16"	"	26	3	
59 N.W.	59' 30"	1° 8' 23"	Exton*			E. & W. (Letter 5, vi, 39). (Site only approx.) D.
59 N.E.	58' 26"	1° 6' 57"	Meonstoke*	Small		L.V.G. (also on 2° Ms. map).
59 N.E.	58' 54"	1° 6' 54"	"	25	3½	
59 N.E.	58' 52½"	1° 5' 22"	Exton	"	4	Oval. (22 by 18 paces).
59 N.E.	58' 52"	1° 5' 21"	"	15	1½	(?) Badly preserved saucer or ring barrow.
59 N.E.	58' 51½"	1° 5' 22"	"	20	4	Mound slightly damaged.
59 N.E.	58' 51"	1° 5' 24"	"	18	4	W. of saucer-barrow.
59 N.E.	58' 51"	1° 5' 22"	"			Saucer-barrow (Pt. II, p. 229).
59 N.E.	58' 50"	1° 5' 22"	"	15	5	(?) Twin barrows in same ditch; only one on O.S.
59 N.E.	58' 49"	1° 5' 16"	"	26	7	D. H/C.
59 N.E.	58' 49"	1° 5' 13"	"	24	6	
59 N.E.	58' 48"	1° 5' 12"	"	20	4	Slight ditch. H/C.
59 N.E.	58' 48"	1° 5' 10"	"	20		Cavity surrounded by bank. (?) Possible pond-barrow.
59 N.E.	58' 45"	1° 5' 1"	Meonstoke*			Saucer-barrow (Pt. II, p. 229).
59 N.E.	58' 41"	1° 5' 1"	"	16	2	L.V.G. H/C.
59 N.E.	58' 39"	1° 4' 34"	"	12	1	L.V.G.
59 N.E.	58' 21"	1° 4' 40"	Hambledon	12	1	
59 N.E.	58' 29"	1° 4' 15"	"	28	3	Dug into from N.E.

6" O.S. Map	Lat. 51°	Long. W.	Parish	Diam. (paces)	Height (feet)	Other Details
59 N.E.	58° 28"	1° 4' 14"	Hambledon	21	2	Slight dip in centre.
59 N.E.	58° 25"	1° 4' 8"	"	12	1	
59 N.E.	58° 23"	1° 3' 54"	"	Small		Covered in brambles 1937.
59 N.E.	58° 23"	1° 3' 50"	"	12	3	Many worked flints on mound.
59 N.E.	58° 20"	1° 3' 54"	"			Not visible Aug., 1937.
59 N.E.	58° 21"	1° 3' 53"	"	Small		L.V.G. Another near here on 2" Ms. map.
59 S.W.	57° 9"	1° 11' 25"	Bishop's Waltham			
59 S.W.	57° 7"	1° 11' 23"	"			
60 N.W.	59° 44"	1° 0' 7"	Langrish	45	3	Air-photo Farnborough a28 shows a possible circle each side of this barrow.
60 N.W.	58° 16"	1° 3' 29"	Hambledon	22	5½	(?) Possible bell-barrow.
60 N.W.	58° 12"	1° 3' 28"	"	15	2	
60 N.W.	58° 14"	1° 3' 32"	"	Vague		1" O.S., 1st Edn. (L.V.G.).
60 N.W.	58° 16"	1° 3' 31"	"			1" O.S., 1st Edn. (not visible to L.V.G., 22nd Aug., 1937).
60 N.W.	58° 10"	1° 1' 57"	East Meon	12	3	Among entrenchments.
60 N.W.	58° 7"	1° 1' 53"	"	15	2½	Trees on it.
60 N.E.	59° 11"	0° 58' 45"	Langrish*			1st Edn., 1" O.S. Nothing to see.—L.V.G., 20th Aug., 1937.
60 N.E.	58° 53"	0° 58' 29"	Buriton	10	1	(?) Doubtful. Flint implement found on it by L.V.G. (in Winchester Museum).
60 N.E.	58° 55"	0° 59' 0"	Langrish	22	3	D. H/C.
60 N.E.	58° 55"	0° 58' 59"	"	22	3	D. H/C.
60 N.E.	58° 55"	0° 58' 58"	"	22	3	Slight ditch. H/C. Air-photo Butser Hill 13.
60 N.E.	58° 40"	0° 58' 46"	"	10	2	
60 N.E.	58° 34"	0° 58' 54"	"	25	3	Worked flints in mound.
60 N.E.	58° 23"	0° 57' 58"	Buriton	Small		Planted with firs 1936 (c).
60 N.E.	58° 23"	0° 57' 56"	"			Observation-tower built on it 1936 (c).
60 N.E.	58° 27"	0° 57' 48"	"	16	2	Planted with firs 1936 (c).
60 N.E.	58° 18"	0° 57' 39"	"	Small		" " " "
60 N.E.	58° 19"	0° 57' 39"	"			" " " "
60 S.W.	56° 30"	1° 2' 57"	Droxford*	30	3½	1st Edn., 1" O.S. (L.V.G.).
60 S.W.	56° 42"	1° 2' 54"	"	30	3	D. Ditto (L.V.G.).
60 S.W.	57° 55"	1° 1' 43"	East Meon*	17	6	H/C. L.V.G.
60 S.W.	57° 55"	1° 0' 51"	"	35	5	O.G.S.C. (L.V.G.).
60 S.W.	58° 4"	1° 1' 10"	"	9	1	L.V.G.
60 S.W.	58° 4"	1° 1' 8"	"	12	1	"
60 S.W.	58° 3"	1° 1' 5"	"	14	3	"
60 S.W.	58° 3"	1° 1' 3"	"	10	1½	"
60 S.E.	57° 24"	0° 59' 7"	Clanfield*	18	2	O.S. 1st Edn. (L.V.G.).
60 S.E.	57° 26"	0° 59' 20"	"	Vague		Ditto. Doubtful (L.V.G.).
60 S.E.	56° 54"	0° 58' 52"	"			(?) Tree-ring. Pt. I, p. 37.
60 S.E.	56° 46"	0° 58' 54"	"	18	1	L.V.G.
60 S.E.	56° 38"	0° 58' 50"	"	20	3	On Clanfield Down.
62 S.W.	53° 23"	1° 50' 39"	Harbridge	20	7	Trees on it, 1936.
62 S.W.	53° 23"	1° 50' 32"	"	20	5	
62 S.W.	53° 18"	1° 50' 30"	"	20	5	
62 S.W.	53° 16"	1° 50' 30"	"	10	2	
62 S.W.	53° 17"	1° 50' 20"	"			(?) Natural rise.
62 S.W.	53° 34"	1° 50' 29"	"	14	3	(Last six on Plumley Heath.)
62 S.E.	53° 28"	1° 45' 10"	Ibaley*	10	2	B.N.S.S., XIV, p. 72 (Barrow II).
62 S.E.	53° 37"	1° 44' 50"	"	11	2	B.N.S.S., XIV, p. 73 (Barrow III).
62 S.E.	53° 18½"	1° 45' 42"	"	10	3	B.N.S.S., XIV, p. 76 (Barrow V).
62 S.E.	53° 19½"	1° 45' 41"	"	10	3	B.N.S.S., XIV, p. 77 (Barrow VI).
63 N.W.	55° 13"	1° 43' 56"	Ashley Walk	9	2	In excellent condition.
63 N.W.	55° 33"	1° 42' 45"	"			Wise, N.F., 208.
63 N.W.	55° 39"	1° 42' 22"	"			D. H/C. Wise, N.F., 208.
63 N.W.	55° 19"	1° 40' 49"	"			Wise, N.F., 207 (?).
63 N.E.	55° 25"	1° 40' 25"	"			Group of at least seven small barrows, only five on O.S.; on Bramshaw bdry.
63 N.E.	54° 37"	1° 39' 56"	"			Ditch on N.E. H/C. Opened.
63 N.E.	55° 42"	1° 39' 8"	Bramshaw	30	6½	D. Fritham Butt: a fine example. Plan in Sumner, N.F., pl. XXII.



6" O.S. Map	Lat. 51°	Long. W.	Parish	Diam. (paces)	Height (feet)	Other Details
63 N.E.	55' 20"	1° 39' 8"	Bramshaw*	20	1	O.S. Southampton (L.V.G.)- Mound truncated.
63 N.E.	54' 42"	1° 38' 56"	Minstead	24	6	Ditch rft. deep and 4 paces wide.
63 N.E.	54' 40"	1° 38' 55"	"*	15	1½	2" Ms. map (L.V.G.).
63 S.W.	54' 11"	1° 44' 45"	Fordingbridge			
63 S.W.	54' 0"	1° 44' 32"	"			On bdry. of three parishes.
63 S.W.	53' 48"	1° 44' 29"	Ibsley "			
63 S.W.	53' 51"	1° 44' 40"	" *	11	2½	B.N.S.S., XIV, 75 (Barrow IV).
63 S.W.	53' 41"	1° 43' 48"	Ellingham			Error on O.S. (Sumner, N.F., p. 44).
63 S.W.	53' 8"	1° 41' 19"	Broomy			Nearly destroyed.
63 S.W.	53' 5"	1° 41' 20"	"			Trenched through.
63 S.W.	53' 7"	1° 41' 23"	" *			(?) Unopened (L.V.G.).
63 S.W.	54' 0"	1° 41' 5"	" *			Sumner, N.F., p. 120.
63 S.E.	(approx.) 54' 31"	1° 40' 11"	Ashley Walk	12	1½	Slight ditch.
63 S.E.	54' 19"	1° 39' 52"	Minstead*			Nearly destroyed. Ms. 2" map.
63 S.E.	54' 10"	1° 38' 8"	"	Large		Well-formed ditch. Two others to S.E., on O.S. Southampton.
63 S.E.	54' 19"	1° 36' 54"	"			Destroyed; Part I, p. 21.
64 N.W.	56' 20"	1° 34' 10"	Copythorne	15	3½	Ditch and outer bank, each 6ft. wide.
64 N.W.	55' 56"	1° 32' 55"	"	27	3½	Money Hills group.
64 N.W.	56' 2"	1° 32' 50"	"	20	4	
64 N.W.	56' 4"	1° 32' 52"	"			Sought in vain (L.V.G.).
64 S.E.			Colbury*	13	3	D. Part I, p. 21 (Colbury barrow).
66 N.W.	55' 49"	1° 19' 25"	West End	35	3	West End Common group.
66 N.W.	55' 44"	1° 19' 18"	" "			(?) D. West End Common group.
66 N.W.	55' 44"	1° 19' 13"	" "			West End Common group.
66 S.W.	54' 12"	1° 19' 9"	Hound			Hants N.Q., IX, p. 12.
67 N.E.	54' 46"	1° 5' 47"	Hambledon	38	6½	Four barrows destroyed about 1931; Hants F.C., XII, 72-4.
67 N.E.	54' 46½"	1° 5' 45"	"	28	6	A fine group, each being beautifully formed. The last two are confluent.
67 N.E.	54' 48"	1° 5' 47"	"	35	6	
67 N.E.	54' 48½"	1° 5' 46"	"	35	5	Hants N.Q., VI, p. 25.
68 N.W.	56' 0"	0° 59' 33"	Horndean			Probable tree-ring, on O.S., as tumulus. See Pt. I, p. 37 (top).
68 N.E.	55' 27"	0° 58' 2"	Chalton*			1" O.S., 1st Edn. (L.V.G.). S.W. half ploughed.
68 N.E.	56' 7"	0° 57' 16"	"	30	3	Chalton Down group.
68 N.E.	55' 52"	0° 57' 22"	"	16	½	Ditto.
68 N.E.	55' 45"	0° 57' 20"	"	12	1	"
68 N.E.	55' 44½"	0° 57' 20"	"	22	3	"
68 N.E.	55' 44"	0° 57' 20"	"	16	1	" H/C.
68 N.E.	55' 45"	0° 57' 22"	" *	12	1	" L.V.G.
68 N.E.	55' 43"	0° 57' 19"	"	22	4	(?) Bell-barrow. Pt. II, p. 210.
68 N.E.	55' 41"	0° 57' 17"	"	Small		Smothered in brambles.
68 N.E.	55' 41"	0° 57' 20"	"	18	1	Shapeless and doubtful.
68 N.E.	55' 39"	0° 57' 15"	"	18	1½	On Idsworth bdry.
68 N.E.	55' 38"	0° 57' 17"	"	8	1	H/C. A neat example.
68 N.E.	55' 33"	0° 57' 19"	"	16	2	H/C. Cairn.
68 N.E.	55' 31"	0° 57' 19"	"	11	1½	H/C. Built largely of flints.
68 N.E.	55' 31"	0° 57' 3"	Idsworth			Probably not a barrow, though marked as one on O.S.
70 N.W.	52' 34"	1° 50' 22"	Harbridge			Site only, W. of reservoir.
70 N.W.	51' 25"	1° 50' 25"	Ringwood	Large		I have a record of five barrows near here, including those in question; sizes range from 14-20 paces diam., and 4-roft. high.
70 N.W.	51' 28"	1° 50' 22"	Harbridge	"		
70 N.W.	51' 12"	1° 49' 6"	Ringwood*	18	5	L.V.G. Site only approx.
70 N.E.	52' 42"	1° 45' 55"	Ellingham*			Sumner, N.F., p. 120. (Site only approx.)
70 N.E.	52' 8"	1° 45' 52"	"	Small		On Bigsbum Hill.
70 N.E.	52' 5"	1° 45' 50"	"	Large		" " "

6° O.S. Map	Lat. 51°	Long. W.	Parish	Diam. (paces)	Height (feet)	Other Details
71 N.W.	51' 51"	1° 42' 44"	Broomy	12	3	H/C. Wise, <i>N.F.</i> , p. 209.
71 N.W.	52' 34"	1° 41' 22"	"	Large		H/C. Wise, <i>N.F.</i> , pp. 200-4.
71 N.W.	52' 37"	1° 41' 20"	"	Small		Wise, <i>N.F.</i> , p. 200 (?).
71 N.W.	52' 38"	1° 41' 21"	"	"		Ditto.
71 N.E.	51' 21"	1° 38' 31"	Burley*	"		Sumner, <i>N.F.</i> , p. 66.
71 S.W.	49' 26"	1° 43' 12"	"	22	6	Ditch 2½ paces wide, rft. deep.
71 S.E.	49' 39"	1° 38' 13"	Rhinefield	14	3	D. (1½ paces wide and ½ ft. deep).
71 S.E.	49' 39"	1° 38' 12"	"	18	5	D. (2 paces wide and 1 ft. deep)
72 N.W.	52' 13"	1° 33' 40"	Lyndhurst	28	3	D. Mutilated. On golf course.
72 N.E.	52' 21"	1° 32' 23"	Denny Lodge	11	3	D.
72 N.E.	52' 21"	1° 31' 21"	" "	7	2	H/C. L.V.G.
72 N.E.	52' 20"	1° 31' 21"	" "	15	4	D. H/C.
72 N.E.	52' 20"	1° 31' 20"	" "	14	3	D. H/C.
72 N.E.	52' 18"	1° 30' 51"	" "	9	2	
72 N.E.	51' 29"	1° 31' 20"	" "	20	3	E. of Denny Enclosure.
72 N.E.	51' 26"	1° 31' 22"	" "	12	2	
72 N.E.	51' 25"	1° 29' 26"	" "	Small		E. of Beaulieu Road Hotel.
72 N.E.	51' 25"	1° 29' 23"	" "	V. large		Ditched. Ditto.
72 N.E.	51' 24"	1° 29' 14"	" "	Small		E. of Beaulieu Road Hotel.
72 N.E.	52' 38"	1° 30' 38"	Colbury	15	2½	D. S. of Deerleap Plantation.
72 N.E.	52' 21"	1° 29' 3"	"	Small		
72 N.E.	52' 18"	1° 28' 58"	"	"		
72 N.E.	52' 12"	1° 28' 45"	"	"		Group of about six small ones, with one larger to S.E. Sizes range from 7-12 paces diam., and 1-½ ft. high; they are mostly ditched. One looks like a very small bell-barrow. Only five on O.S. S.E. of last group.
72 N.E.	52' 9"	1° 28' 45"	"	"		S.E. of last group.
72 S.W.	49' 56"	1° 36' 17"	Brookenhurst	25	2½	N.W. of Ober Corner.
72 S.E.	51' 3"	1° 30' 46"	Denny Lodge	11	2	N. of Bishop's Dyke.
72 S.E.	51' 31"	1° 30' 45"	" "	13	2	" " "
72 S.E.	51' 4"	1° 30' 45"	" "	17	2½	" " "
72 S.E.	50' 58"	1° 30' 34"	" "	26	5½	" " "
72 S.E.	50' 57"	1° 30' 31"	" "	20	3	" " "
72 S.E.	50' 26"	1° 29' 58"	" "	24	4	Sumner, <i>N.F.</i> , pl. xxix.
72 S.E.	50' 57"	1° 29' 28"	" "	14	2½	D. Flattish top.
72 S.E.	50' 56½"	1° 29' 27"	" "	"	1	L.V.G.
73 N.W.	51' 50"	1° 27' 1"	" "	"		Natural (Sumner, <i>Local Papers</i> 1931, p. 131); Wise, <i>N.F.</i> , p. 197.
73 N.W.	51' 12"	1° 27' 8"	" "	"		Group of about six small barrows on O.S., Southampton; air-photo 6690.
73 N.W.	51' 44"	1° 25' 33"	Dibden			Wise, <i>N.F.</i> , p. 197.
73 S.W.	50' 31"	1° 28' 2"	Denny Lodge*	9	1	L.V.G. Doubtful.
73 S.W.	50' 21"	1° 26' 10"	" "	18	3	Mutilated.
73 S.W.	50' 25"	1° 26' 4"	" "	18	4	" "
73 S.W.	50' 25"	1° 25' 57"	" "	15	3	Slight D. H/C.
73 S.W.	50' 44"	1° 25' 58"	" "	13	2½	" "
73 S.W.	50' 45"	1° 25' 8"	" "	16		Slight ditch and outer bank.
73 S.W.	50' 49"	1° 25' 1"	" "	16	4	D. H/C.
73 S.W.	50' 37"	1° 25' 37"	" "	30	7	V. large and fine twin-barrow. Sumner, <i>N.F.</i> , p. 83 and pl. XXIII. Well-preserved ditch, hour-glass shaped, encloses both mounds.
73 S.W.	50' 47"	1° 24' 12"	" "	35	8	Ditch 4 paces wide and ¾ ft. deep.
73 S.W.	49' 45"	1° 25' 17"	" "	24	5	Suggestion of ditch.
73 S.W.	49' 45"	1° 25' 9"	" "	40	6½	D.
73 S.W.	49' 48"	1° 24' 55"	" "	35	6	Flattish top.
73 S.W.	49' 42"	1° 24' 22"	" "	12	3	D. H/C.
73 S.W.	49' 57"	1° 24' 31"	" "	10	3	Apparently two barrows of same dimensions here.
73 S.W.	49' 57"	1° 24' 28"	" "	? 40	? 20	Apparently a bell-barrow converted into a rifle-butt; on N., are traces of ditch 5 paces wide and ¾ ft. deep, and berm 6 paces wide. <i>Hants F.C.</i> , I, Pt. 2, 10-11.

6" O.S. Map	Lat. 51°	Long. W.	Parish	Diam. (paces)	Height (feet)	Other Details
73 S.W.	49' 56"	1° 24' 25"	Denny Lodge	20	3	Truncated.
73 S.W.	49' 58"	1° 24' 17"	"	28	8	
73 S.E.	49' 54"	1° 24' 9"	Fawley "	28	5	On bdry. of Denny Lodge ph.
73 S.E.	49' 53"	1° 24' 9"	"	23	4	Overlapping barrows; only
73 S.E.	49' 54½"	1° 24' 10"	"	18	2	one on O.S.
73 S.E.	50' 0"	1° 24' 7"	"	25	8	D.
73 S.E.	50' 16"	1° 23' 43"	"	15	3½	D.
73 S.E.	50' 21"	1° 23' 46"	"	13	4	Mound damaged.
73 S.E.	50' 32"	1° 24' 2"	Denny Lodge	Small		H/C.
73 S.E.	50' 39"	1° 24' 10"	"	Large		Ditched.
75 N.E.	51' 31"	1° 7' 8"	Southwick			Levelled barrow (note by Col. Cooke on O.S. Southampton).
75 N.E.	51' 30"	1° 6' 57"	" *	25	1	Col. Cooke as above (L.V.G.).
75 N.E.	51' 26"	1° 6' 28"	" *			(?) Site of barrow (Col. Cooke as above). Bdry. of three parishes.
75 N.E.	51' 18"	1° 5' 7"	Coaham*	12	1	H/C. L.V.G. A slight mound to N. may be another barrow.
75 N.E.	51' 17"	1° 4' 41"	" *	18	2	H/C. L.V.G.
75 N.E.	51' 15"	1° 4' 0"	" *			Possible site of barrow: skeletons found when wind-mill thereon was removed (Col. Cooke as above).
76 N.W.	51' 10"	1° 3' 10"	Portsmouth	10	1	H/C. Perhaps another 100 paces to W.
76 N.W.	51' 11"	1° 2' 50"	"			Site of Gob's Barrow, behind house called Barrowdene; <i>Hants F.C.</i> , XII, 208 (Col. Cooke).
76 N.W.	51' 11"	1° 2' 30"	Havant			Doubtful barrow, in tree-ring.
76 N.W.	51' 12"	1° 1' 58"	"			Sites of three barrows; they are on Taylor's map of 1759.
78 N.W.	49' 0"	1° 49' 13"	Hurn	13	3	Slight ditch.
78 N.W.	49' 1"	1° 49' 11"	"	9	2½	Rather shapeless.
78 N.W.	48' 11"	1° 49' 40"	"			Three, that at W. being largest. (On Foxbury Hill.)
78 N.W.	47' 42"	1° 51' 2"	"			On E. Farley Common.
78 N.W.	47' 50"	1° 48' 56"	Ringwood			Heather-covered.
78 N.W.	47' 39"	1° 49' 30"	Hurn			On Barnfield Heath.
78 N.W.	47' 46"	1° 51' 43"	"	18	5½	D. Mound is on berm raised 2½ft., apparently modern and of tree-ring origin.
78 N.W.	47' 42"	1° 40' 43"	"	21	6	D. (2½ paces wide and 1ft. deep).
78 S.W.	47' 13"	1° 50' 34"	"			On Merritown Heath.
78 S.W.	47' 0"	1° 50' 9"	"			Partly destroyed.
78 S.W.	46' 34"	1° 40' 0"	Sopley*	22	4	L.V.G. On Sopley Common.
78 S.W.	45' 57"	1° 51' 3"	Bournemouth*			Site only approx. Sumner, <i>Local Papers</i> , p. 45, note 2.
78 S.E.	46' 37"	1° 48' 48"	Sopley*	16	3½	D. Sarsen on top. L.V.G.
78 S.E.	46' 27"	1° 48' 43"	"	16	3	On Hurn bdry.
78 S.E.	46' 8"	1° 48' 32"	Hurn	25	8	A fine example.
78 S.E.	46' 6"	1° 48' 30"	"	24	6	Enclosed in modern ditch and bank.
78 S.E.	46' 4"	1° 48' 30"	"	27	6	Fine. Gold torc probably found in one of last three barrows; see Part I, p. 19; <i>Archaeologia</i> , XXXVI, p. 185.
78 S.E.	46' 55"	1° 44' 55"	Sopley			Approx. site of two barrows nearly levelled, marked on 6" O.S., early editions.
79 N.W.	48' 18"	1° 44' 31"	Ringwood			On Sopley bdry.
79 N.W.	48' 2"	1° 43' 58"	Sopley			In plantation.
79 N.W.	48' 25"	1° 43' 53"	Ringwood			Lugden barrow, on Burley bdry.
79 N.W.	47' 40"	1° 43' 9"	Sopley			Site of barrow.
79 N.W.	47' 48"	1° 43' 13"	"			
79 N.W.	47' 51"	1° 43' 9"	"			Site of barrow.
79 N.W.	47' 57"	1° 43' 0"	"			On bdry. of three parishes.
79 N.E.	49' 21"	1° 39' 57"	Burley	18	6	Slight ditch.
79 N.E.	49' 2"	1° 39' 37"	"	13	3	" "
79 N.E.	49' 8"	1° 39' 35"	"	16	4	" "

6" O.S. Map	Lat. 51°	Long. W.	Parish	Diam. (paces)	Height (feet)	Other Details
79 S.E.	50° 47' 6"	1° 38' 30"	Milton*	11	2½	Opened by W. A. Seaby, Easter 1939. To be published shortly; Deverel-Rimbury urn found (W.A.S.).
80 N.W.	49° 16"	1° 36' 0"	Brockenhurst	24	4	On Whitefield Moor.
80 N.W.	48° 51"	1° 36' 15"	"	8	3	Covered in gorse.
80 N.W.	47° 50"	1° 36' 18"	Boldre	26	6½	D.
80 N.W.	47° 45"	1° 36' 5"	"	6	2½	On Sway bdry.; may be a boundary-mound.
80 N.E.	48° 53"	1° 31' 20"	"	25	6	D. Pudding barrow. Sumner, N.F., p. 82 and Pl. XXII.
80 N.E.	48° 42"	1° 31' 16"	"	30	5	D.
80 N.E.	48° 23"	1° 31' 15"	"	25	5	Flat top (? platform type).
80 N.E.	48° 17"	1° 31' 2"	"	16	3	"
80 N.E.	48° 10"	1° 31' 10"	"	25	3	"
80 N.E.	48° 19"	1° 30' 59"	"	24	3½	"
80 N.E.	48° 8"	1° 30' 36"	"	27	3	With trees.
80 N.E.	48° 18"	1° 30' 28"	"	28	2	"
80 N.E.	48° 28"	1° 30' 46"	"	24	5	D. " Flat top.
80 N.E.	48° 30"	1° 30' 34"	"	25	4	D. " " Trees.
80 N.E.	48° 33"	1° 30' 34"	"	25	4½	D.
80 N.E.	48° 45"	1° 30' 11"	"	28	5½	D. Flat top; Coldpixey's Cave (Wise, N.F., Map).
80 N.E.	48° 50"	1° 30' 15"	"	7	½	H/C. In wood.
80 N.E.	48° 50"	1° 30' 11"	"	9	2	In wood.
80 N.E.	49° 2"	1° 29' 14"	"	11	3	D.
80 N.E.	48° 47"	1° 29' 34"	"	24	2½	Flat top (? Platform barrow).
80 N.E.	48° 15"	1° 29' 18"	"	30	4	D. Three barrows (one of).
80 N.E.	48° 12"	1° 29' 13"	"	18	2½	Three barrows (one of).
80 N.E.	48° 17"	1° 29' 10"	"	25	2½	Three barrows (one of); Wise, N.F., Map.
80 N.E.	47° 56"	1° 29' 42"	"	13	3½	"
80 N.E.	48° 55"	1° 28' 58"	"	14	2	N. of Hatchet Pond.
80 N.E.	48° 58"	1° 28' 55"	"	26	3	D. (2½ paces wide, 1ft. deep).
80 N.E.	48° 13"	1° 28' 18"	"	28	3	D. Mound truncated.
80 S.W.	47° 7½"	1° 34' 56"	Sway	Small		D. H/C. Part I, p. 19.
80 S.W.	47° 9½"	1° 34' 56"	"	"	"	H/C. Part I, p. 19.
80 S.W.	47° 9"	1° 34' 58"	"	"	"	H/C. L.V.G. Part I, p. 19.
80 S.E.	47° 32"	1° 30' 57"	Boldre	27	7	D. (2 paces wide, 1ft. deep).
80 S.E.	47° 19"	1° 30' 31"	"	"	"	Two small ones; one 10 paces diam., and 3ft. high.
80 S.E.	47° 5"	1° 30' 46"	"	"	"	"
80 S.E.	47° 19"	1° 30' 25"	"	15	2½	Suggestion of ditch.
80 S.E.	47° 40"	1° 29' 18"	"	"	"	On Peaked Hill.
80 S.E.	47° 34"	1° 29' 14"	"	"	"	"
80 S.E.	47° 31"	1° 29' 7"	"	"	"	On Wormstal' Hill.
81 N.W.	49° 17"	1° 25' 8"	Denny Lodge*	9	1	L.V.G.
81 N.W.	49° 16"	1° 25' 7"	"	9	1	"
81 N.W.	49° 15½"	1° 25' 5"	"	20	3	"
81 N.W.	49° 14"	1° 25' 3"	"	10	1	"
81 N.E.	48° 59"	1° 23' 20"	"	9	3	There were formerly more barrows near here: Wise, N.F., p. 211 (Langley Heath). Two possible barrow-circles; <i>Wessex from Air</i> , p. 245 and Pl. XLVII.
81 S.E.			Exbury			
85 N.E.	45° 34"	1° 55' 43"	Bournemouth			On golf course (?).
85 N.E.	45° 25"	1° 55' 30"	"			Approx. sites of two barrows.
85 N.E.	45° 7"	1° 55' 20"	"	Large		L.V.G., probable barrow.
85 N.E.	45° 32"	1° 54' 42"	"	13	2½	"
85 N.E.	45° 33"	1° 54' 31"	"	16	4	D.
85 N.E.	45° 30"	1° 54' 33"	"	"	"	Site of destroyed barrow.
85 N.E.	45° 30"	1° 54' 12"	"	14	3	"
85 N.E.	45° 4"	1° 54' 20"	"	"	"	Approx. site of three barrows (Lush Barrows), now destroyed.
85 N.E.	45° 44"	1° 54' 21"	"	"	"	(?) Site occupied by cemetery
85 N.E.	45° 45"	1° 54' 14"	"	"	"	"
85 S.E.	43° 53"	1° 53' 43"	"	"	"	Approx. sites of three destroyed barrows.
85 S.E.	43° 55"	1° 53' 15"	"	"	"	Site of Robin Hood's Barrow.
85 S.E.	43° 51"	1° 53' 6"	"	"	"	Site of destroyed barrow, probably opened by Mr. W. de C. Frèdeux of Dorchester.

6" O.S. Map	Lat. 51°	Long. W.	Parish	Diam. (paces)	Height (feet)	Other Details
85 S.E.	42' 51"	1° 53' 2"	Bournemouth	13		Site of barrow (W. G. Wallace).
86 N.W.	45' 30"	1° 52' 9"	"	13	1½	Site only; Pt. I, p. 21 (Moor-down).
86 N.W.	44' 17"	1° 52' 48"	"		? 6	Site of Maze Barrow, opened by W. de C. Prideaux of Dorchester. (Information from Mr. J. B. Calkin.)
86 N.W.	44' 24"	1° 52' 10"	"			Site of destroyed barrow.
86 N.W.	44' 54"	1° 51' 26"	"	15	4½	E. of St. Francis of Assisi Church.
86 N.W.	44' 41"	1° 51' 43"	"			Site of barrow.
86 N.W.	44' 22"	1° 51' 11"	"		1	Opened by G. Wilmott, 1935 nothing found.
86 N.W.	44' 40"	1° 50' 20"	"			Part I, p. 21 (Hadden's Hill).
86 N.W.	44' 8"	1° 50' 7"	"			Opened by Mr. H. Druitt who found nil. (Thistle Barrow.) (Measurements of sites on this sheet are from Mr. W. G. Wallace's Ms., in possession of Mr. J. B. Calkin.)
86 N.E.	45' 12"	1° 47' 30"	Christchurch			Quarried on each side.
86 N.E.	45' 22"	1° 47' 34"	"	25	10	Mutilated.
86 N.E.	45' 17"	1° 47' 45"	"	15	1	
86 N.E.	45' 27"	1° 47' 38"	"	15	4	In danger of being quarried away.
86 N.E.	45' 28"	1° 47' 56"	"	17	5	
86 N.E.	45' 35"	1° 47' 39"	"	12	2	Small H/C.
86 N.E.	45' 38"	1° 47' 43"	"	25	4	
86 N.E.	45' 43"	1° 47' 48"	"	14	3½	Pt. I, p. 19 (St. Catharine's Hill).
86 N.E.	45' 50"	1° 48' 21"	Hurn	14	2	H/C.
86 N.E.	45' 51½"	1° 48' 20"	"	16	3½	The St. Catharine's Hill group are described in <i>Archaeologia</i> V, p. 239.
86 N.E.	44' 20"	1° 47' 25"	Christchurch			Site of (?) two barrows.
86 N.E.	44' 38"	1° 47' 6"	"			(?) Bell-barrow; Pt. II, p. 213.
86 S.W.	43' 57"	1° 52' 42"	Bournemouth*			Destroyed. Site on 25" O.S.
86 S.W.	43' 18"	1° 51' 27"	"		5½	Oval (18 paces by 24 paces). Destroyed 1934.—J. B. Calkin.
86 S.W.	43' 18"	1° 51' 58"	"		*	Destroyed 1874; urns found but destroyed.—J. B. Calkin.
86 S.W.	43' 55"	1° 49' 2"	"		*	Destroyed; urns found, in Druitt collection. Pt. I, p. 21 (Hillbrow).
86 S.W.	43' 46"	1° 48' 50"	"			Destroyed; bucket-urns in Druitt collection; Pt. I, p. 21 (Stourfield Barrow).
86 S.E.	43' 29"	1° 48' 6"	"			Site only; urn in Druitt collection.
86 S.E.	44' 0"	1° 47' 54"	"		*	Site of barrow; "urns and crucible found."—O.S., 1870 Edn.
86 S.E.	43' 40"	1° 47' 0"	"	30	10	S.E. of Tuckton Bridge.
86 S.E.	43' 14"	1° 46' 11"	"	40	3	J. B. Calkin (L.V.G.); in field called Roebury.
86 S.E.	43' 13"	1° 46' 21"	"		*	L.V.G. Vague rise, perhaps a barrow nearly levelled.
86 S.E.	43' 5"	1° 45' 54"	"	33	7	Hengistbury Head group, No. 1; Pt. I, p. 19. Relics in collection of Sir G. Meyrick, Hinton Admiral. See also <i>Archaeologia</i> , V, 1779, p. 238.
86 S.E.	43' 6"	1° 45' 49"	"		3	Oval (25 by 18 paces).
86 S.E.	43' 6"	1° 45' 47"	"	12		Covered in gorse.
86 S.E.	42' 54"	1° 45' 23"	"	10	2½	
86 S.E.	42' 52"	1° 45' 23"	"	17	1	
86 S.E.	42' 54"	1° 45' 20"	"	20	6	
86 S.E.	42' 54"	1° 45' 18"	"	15	1	
86 S.E.	42' 53"	1° 44' 57½"	"	13	2	
86 S.E.	42' 52"	1° 44' 56½"	"	10	1	
86 S.E.	42' 50"	1° 44' 45"	"	14	1½	Slight ditch.

6° O.S. Map	Lat. 51°	Long. W.	Parish	Diam. (paces)	Height (feet)	Other Details
86 S.E.	42' 50"	1° 44' 43"	Bournemouth	15	1	This and previous 10 form Hengistbury Head group; see Bushe-Fox, <i>Hengistbury Head Report</i> ; excavations of at least two of the barrows by Mr. H. St. George Gray are unpublished.
87 N.W.	45' 21"	1° 43' 35"	Christchurch E.			On Burton Common.
87 N.E.	?	?	Milton*			Urn from barrow on Barton Common; Pt. I, p. 21.
87 S.W.	44' 3"	1° 43' 42"	Christchurch			N.E. of Mudeford. For sites in Bournemouth area generally, see J. B. Calkin, <i>B.U.S.S.</i> , XXVIII, 46-56; <i>S.E. Union of Sci. Societies</i> , 1935, pp. 21-31.

---

*Addenda.*

56 S.W.	58' 2"	1° 36' 5"	Plaitford*	11	1½	J. F. Stone and L.V.G., 1940. Ditched.
72 N.E.	51' 35"	1° 31' 28"	Denny Lodge*	9	2	L.V.G. D.
72 N.E.	51' 36"	1° 31' 28"	" "	20	4½	L.V.G. Both found April 1940.

---

NOTES ON SOME OF THE SITES DESCRIBED.

- 4 N.E. Maps by Rocque and Pride suggest that there may have been two more barrows here originally.
- 10 S.W. Lat. 51° 17' 44"; Long. 1° 11' 8". A very interesting site, because at the time of my visit (18th June, 1939) the mound showed as a ring of white chalky rubble enclosing a core of rich brown mould. It is evident that the mound was composed of this brown mould and was surrounded by a ditch the chalk from which was spread over the mound to form a crust. On the mound I picked up a well-worked flint thumb-scraper.
- 16 S.W. An unidentified barrow near Upper Wyke was opened many years ago and contained burnt bones (? secondary interment). Crawford, *Andover District*, p. 59.
- 16 S.E. Major Allen has an air-photo (4/87) of two circles N. of the Harroway and N.W. of Down Farm, near Dirty Corner.
- 17 S.E. Site of barrows on Berry Down (Crawford, *Andover District*, p. 91).
- 18 S.W. F. J. Baigent and J. E. Millard's *Hist. Basingstoke*, 1889, refers to the Sunburghes (A.D. 1274-5) on pp. 194-5; rent for 'lands at the vij borowes, 8d.' (A.D. 1541-2) on p. 386; Sevenhyne (A.D. 1260, c.) on p. 603; Seven Barwys (A.D. 1443-4) on p. 620; and Seven Barrows (A.D. 1578) on p. 629. See also pp. 6, 195-6, 209, and 657 of the same work.
- 19 S.E. These two sites (with the possible disc-barrow, Part II, p. 215) were shown me by Mr. P. Parsons of Wanborough. Each consists of a circle of brown grass (18. vi. 1938). It is for excavation to reveal the nature of these circles.

- 40 N.E. In Carmarthen Museum are three Early Iron Age currency bars found by Canon Collier in a barrow close to the Crawley—Winchester Road (information from the late Mrs. Hooley, Winchester Museum Records, and the Carmarthen Museum). Rev. E. V. Tanner has tracked down a bronze armlet in the same museum, found by Canon Collier in a barrow near Winchester.
- 50 N.W. Twyford Down. For possible barrows here, see *Brit. Arch. Assoc., Winchester Congress Vol.*, 1845, p. 460; Circles on O.S. air-photo 5567 may be barrows or (more likely) fungus-rings.
- 52 N.E. Mutilated barrow, 6ft. high. Mr. Sylvester, of the Slade, Froxfield, had a fragment of reddish pottery from this barrow (note on O.S. map, Southampton). See also the *Antiquary*, XVII, 220; Williams-Freeman, *Field Arch.*, 1915, 289.
- 59 N.E. Old Winchester Hill group; see *Hants N.Q.*, II, p. 28; IX, p. 157; Williams-Freeman, *Field Arch. Hants*, 1915, p. 270.
- 76 N.W. An oval barrow (probably a twin-barrow) on Portsdown near the George Inn (? Gob's Barrow) was opened about 1926 by Col. Cooke, and proved to be of considerable importance. The western portion contained a cist 3ft. square, in which was a crouched skeleton of a young man, accompanied by a well-worked flint dagger, fragments of a richly ornamented beaker (probably Type A) and a small jet bead. The eastern portion contained cremations and a flint scraper. See *Hampshire Telegraph*, April 8th and 9th, 1926. I am indebted to Miss L. F. Chitty, F.S.A., for details of this excavation which is of great importance and has had little publicity.