



25th Anniversary Celebration & Silent Auction

Healthcare Design Expo and Conference
Phoenix, Arizona
November 10-13, 2018



DESIGNCAN

Unleashing Design's Healing Power

Celebrating 25 Years.
Help us Build the Next 25.

The Mission of The Center for Health Design:

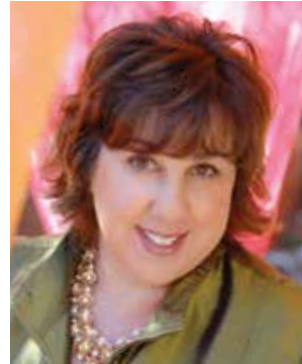
To transform environments for a healthier, safer world through design research, education, and advocacy.

The Center for Health Design advances best practices and empowers healthcare leaders with quality research that demonstrates the value of design to improve health outcomes, patient experience of care, patient and staff safety and provider/staff satisfaction and performance.

Through design research, education, and advocacy, we're leading the way in transforming hospitals, clinics, wellness centers, doctor's offices, and residential care facilities for a safer, healthier tomorrow.

Dear Friends,

The Center for Health Design has been the leading voice and resource for professionals focusing their efforts on developing the best, most effective healthcare environments. For more than 25 years, The Center has provided knowledge, professional support, and guidance for all who are interested in improving the way healthcare environments are designed and built.



As we plan the next 25 years, we are excited by the many opportunities before us and the ability to continue to drive and shape the ways healthcare facilities and environments deliver care to patients and improve the ability of those working in them to provide care. We have identified what it will take to remain the leading voice and advocate in our field and are excited to move forward with these initiatives. We will focus our efforts in three specific areas including:

Research Based Practices which will include recording best practices and identifying ways to connect and unify the healthcare environment. This will ensure designers and architects are able to understand the most current and effective interventions in the design of healthcare environments.

Future Focused Expansion reflects our desire to bring the knowledge we have attained through our work in acute facilities and apply that knowledge to other areas of health such as the home and community based settings.

Standardized Post-Occupancy Evaluation through the creation of a database accessible to all members and Affiliates.

The participation and dedication of our supporters has allowed The Center for Health Design to attain the goals it originally set for itself 25 years ago. As we plan for the continued growth and expansion of our organization, we will again look to those who recognize the value The Center provides to our field, to those who work in the healthcare field, and especially to those patients who benefit from improved outcomes.

I thank you for your past support and invite you to join me in this next phase of our evolution because as we all know, design has the power to impact and influence many things... **Design Can.**

Sincerely,

Debra J. Levin, Hon FASID, EDAC

President and CEO

The Center for Health Design

In Gratitude

Thank you to the following organizations for making our reception and auction possible.

Reception Partners

architecture+



SMITHGROUP



Auction Donors

AECOM

AESTHETICS INC

Allsteel

beagleman's



CAMA

EYP/



HermanMiller



nbbj



PERKINS+WILL

PORCELANOSA
TILE · KITCHEN · BATH · HARDWOOD



Smith Hager Bajo

Steelcase
HEALTH



ZULU NYALA
Experience the Magic of Africa



The Center for Health Design

Thank you from the Board of Directors



Rosalyn Cama, FASID, EDAC
President
CAMA Inc.



Frederick A. Hessler
Retired Managing Director
Citigroup



Thomas M. Jung, RA
Owner
Thomas M. Jung Consulting, LLC



Debra J. Levin, Hon FASID, EDAC
President and CEO
The Center for Health Design



**Avein Saaty-Tafoya, MD, MBA,
HCM, EDAC**
President and CEO
Adelante Healthcare



Frank Weinberg, M.S.
Board Chair
The Center for Health Design

The Center for Health Design

The Advisory Board October 2018

John A. Becker, FACHA, FHFI

Retired Director, Facilities Division
U.S. Defense Health Agency

Susan Dentzer

President and CEO
Network for Excellence in Health
Innovation

Joe Flower, M.A.

CEO
The Change Project, Inc.

Jason Girzadas

Principal
Deloitte Consulting LLP

Robert Heitmeier

*Vice President, Vertical Markets
and Materials*
Steelcase

Sean Hughes

*Vice President and Head of Design
Consulting*
Philips Design

Vijay Kumar, MS

Professor, Institute of Design
Illinois Institute of Technology

Roger Landry, MD, MPH

President
Masterpiece Living, LLC

Mickey McManus

Principal and Chairman of the Board
Maya Design

Donald H. Orndoff

*Senior Vice President, National Facilities
Services*
Kaiser Permanente

David S. Yeh

Sr. Global Solutions Manager – Healthcare
United Technologies Corporation

DIRECTOR EMERITUS

**D. Kirk Hamilton, FAIA, FACHA,
EDAC**

Founding Principal Emeritus
WHR Architects

Jain Malkin, CID, AAHID, EDAC

Evidence-Based Design Consultant

Robin Orr, MPH

President
The Robin Orr Group

**Derek Parker, FAIA, RIBA, FACHA,
EDAC**

Director
Aditazz

Roger S. Ulrich, PhD, EDAC

Professor, Department of Architecture
Center for Healthcare Building Research
Chalmers University of Technology

RESEARCH AND PROJECT PARTNERS

Agency for Healthcare Research and Quality (AHRQ)	California HealthCare Foundation
AIA Academy of Architecture for Health (AAH)	The Donghia Foundation
AIA Design For Aging (DFA)	Facility Guidelines Institute (FGI)
American Society for Healthcare Engineering (ASHE)	Healthier Hospital Initiative
American Society of Interior Designers (ASID)	The Kresge Foundation
BSA LifeStructures	The Mayer-Rothschild Foundation
	Nursing Institute for Healthcare Design (NIHD)
	Research Design Connections (RDC)

THE CENTER FOR HEALTH DESIGN VOLUNTEERS

Advisory Board	Healthcare Design Expo & Conference
Architectural Showcase Review Panel Members	Educational Review Committee
Board of Directors	<i>HERD Journal</i> Editorial Review Board and Advisory Board Members
EBD Touchstone Award Jury Members	Research Coalition
EDAC Advisory Council	
Environmental Standards Council	
Environments for Aging Expo & Conference Educational Review Committee	

CONFERENCE AND PUBLICATION PARTNERS

Emerald Expositions
Healthcare Design Magazine
HERD Journal
SAGE Publications

EDUCATIONAL PARTNERS

architecture+
Grainger
J+J Flooring Group
Stance Healthcare
Tarkett
Whitehall Manufacturing

EVENT PARTNERS

Accurate Lock & Hardware	HDR, Inc	Patcraft
architecture+	IOA Healthcare Furniture	Ponte Guilio
Armstrong Flooring	J+J Flooring Group	Sappi North America
Carstens	Kwalu	Stance Healthcare
Distinctive Art Source	MechoSystems	Steelcase Health
ESa	Metrasens	United Technologies
gapingvoid	nora systems, Inc.	Whitehall Manufacturing
Grainger	One Workplace	

EDAC CHAMPION FIRMS

American Art Resources	Harley Ellis Devereaux
CAMA, Inc.	Kahler Slater Architects, Inc.
CannonDesign	Salvatore Associates

EDAC EDUCATIONAL PARTNER

Steelcase Health

EDAC ADVOCATE FIRMS

ACI Boland	Earl Swensson Associates	Parkin Architects Limited
AECOM	Erdenberger Design Group	Perkins+Will
ACI Boland Architects	Erdman	Peters & Associates
ARCH Design, Artwork & Framing Inc.	Farmboy Fine Arts	Plenary Group
ArchiMed	Forbo Flooring Systems	Progressive AE
Architecture+	Gensler	Salus Healthcare Architecture
Baskervill	Gresham Smith	Silver Thomas Hanley
B+H Architects	Guidon Design Inc.	Skyline Art Services
Bouygues Building Canada	HDR, Inc.	Spellman Brady & Company
Burns & McDonnell	Healthcare Art Consulting	Stantec
CBLH Design	HKS, Inc.	T2 Designs, Inc.
CEI Architecture	Holland Basham Architects	Visions in Architecture
Corgan Associates, Inc.	Kaiser Permanente	Wellness Environments Inc.
CS.i.	Kasian	ZGF Architects
Czopek Design Studio Inc.	Leo A Daly	
Davis Partnership Architects	Mazzetti Inc.	
	Midmark	
	nora systems, Inc.	

AFFILIATE+ MEMBERS

Adelante Healthcare	Grainger	Patcraft
Allsteel	Gresham Smith	Porcelanosa
architecture+	HDR, Inc.	Shaw Contract Group
Berners Schober	Herman Miller Healthcare	SmithGroup
Boulder Associates Inc.	HGA Architects & Engineers, Inc.	Spellman Brady & Company
BSA LifeStructures	Illinois Institute of Technology	Stance Healthcare
Caldwell Associates Architects	Interior Health Authority	Steelcase Health
CAMA, Inc.	J+J Flooring Group	Steffian Bradley Architects
CareATC	Joseph Brant Hospital	Tarkett
Clemson University	JPT Architects	Texas A&M University, Department of Architecture
CR Goodman Associates	Kaiser Permanente	TreanorHL
Defense Health Agency	Kimball Health	U.S. Department of Veterans Affairs
E4H Environments for Health Architecture	Kwalu	University Of Chicago Hospitals
Earl Swensson Associates, Inc.	Main Line Health	University of Kansas, Institute for Health & Wellness Design
Eckroth Planning Group	McMillan Pazdan Smith Architecture	Vhi
Emerald Expositions	Navigant Consulting, Inc.	Washington University in St. Louis
EwingCole	NBBJ	Whitehall Manufacturing
EYP Architecture & Engineering	nora systems, Inc.	
Fraser Health Authority	Northern Arizona Healthcare	
Gapingvoid	One Workplace	
GBBN Architects	Orcutt Winslow	

CORPORATE AFFILIATE MEMBERS

AECOM	Full Circle Systems Engineering	Page Building Group, LLC
Accurate Lock and Hardware	Great American Art	Paladin Healthcare LLC
ARCH Design, Artwork & Framing	Henry Domke Fine Art	Perkins+Will
Armstrong Flooring	HKS, Inc.	Pomarico Design Studio Architecture, PLLC
Ballinger	HOK, Inc.	Ponte Giulio USA
Bernardon	Inventure Design	Puchlik Design Associates, Inc.
Blue Cottage Consulting	IOA Healthcare Furniture	Suppi North America
Buffalo Design	Johnson Johnson Crabtree Architects P.C.	Skyline Art Services
CannonDesign	Kahler Slater Architects, Inc.	Spec Furniture
Carolina An OFS Brands Co.	KI Healthcare	Stantec
Class 1 Inc.	KMD Architects	Veterans4You Inc.
Construction Specialties, Inc.	Levi + Wong Design Assoc Inc.	VHB
Corgan Associates	Man Made Music	Wieland Healthcare
Dirtworks Landscape Architecture, PC	Matthei & Colin Associates	Winco Mfg., LLC
Distinctive Art Source	Mecho	WRNS Studio
Ecore Commercial Flooring	MedSpace Innovations	ZGF Architects Inc.
Exemplis SitOnIt and IDEON	Newcombe Design Associates	Zimmerman Architectural Studios, Inc.

PROFESSIONAL AFFILIATE MEMBERS

Amy Daly	Joost Bende	Paul Levesque
Bob Winters	Judith Smith	Penelope Martin
Bonnie Lewis	Karen Kost	Rhonda Scott
Cathy Dolan-Schweitzer	Kristin Ellingsen	Richard Embers
Christine Hardin	Malcolm Hawkins	Robert Amatuli
Cindy Barr	Marian Carro	Saeed Abu Lawi
David Johnson	Mary Bracken	Sarah Holton
Debra Levin	Melissa Williams	Shehzad Leghari
Eric Ritland	Mohamed Rezzgui	Stephen Howard
Jan Kroman	Mona Kines	Walter Jones
Janet Roche	Noe Del Bosque	

INDIVIDUAL AFFILIATE MEMBERS

Aileen Hogan	Frank Sturgeon	Kim Shinn	Patrick Casey
Alena Fisher	Frank Weinberg	Kimberly McMurray	Patti Miles
Amy Miller	Georgeann Burns	Larry Emerson	Paul Toburen
Andrey Montes Jaramillo	Gerry Pilon	Laura Boschetti	Peter Bardwell
Ann Showan-Slade	Ginger Biggerstaff	Laura Busalacchi	Rebecca Block
Annette Marlar	Grace Tunkel	Lauren Schwade	Rebecca Hathaway
Anthony Cavallaro	Gustavo Camarano	Laurie Emery	Renee Moe
Audrey Cavadas	Heather Button	Laurie Placinski	Richard Pizzi
Barbara Dellinger	Holly Morgan	Leilani Gagnaire	Robert J. Waltersdorf
Ben Lee	J. Carlee Adams	Leonard Rozek	Sandra Colatrella
Bernard Mohr	James Morrison	Lipson Sisiolo	Sandra Waller
Blossom Lin	Jamie Levine	Lisa Cini	Seana Patankar
Bryan Brinkman	Jane Rohde	Lisa Pahl	Sejal Mehta
Bryan Langlands	Janet Carpman	Lori Klein	Shari Stein
Candace Reeve	Jason Puchot	Lorissa MacAllister	Sharon Steele
Carmen Preston	Jaynelle Stichler	Lucy Brun	Shawn Suter
Carolien Euser	Jeanette Gamboa	Lucy Stein	Sheryl Valentine
Carolyn Kiss	Jeani Natwick	Marc Schweitzer	Silvia Hoffmann
Casey Blanchard	Jennifer Berryman	Marcus Thorne	Stan Taylor
CC Andrews	Jennifer Low	Mardelle Shepley	Stanley Herman
Cecilia Arroyo	Jill Pable	Margaret Calkins	Stephanie Sompotan
Chris Bachorowski	JoAnn M. Magnatta	Maria Talamo	Stephen Hughes
Chris Reed	Joe Lavigne	Marianne Weber	Steve Christoff
Christine Guzman	Joe Steffes	Mary C. Valmonte	Steven Hanson
Colleen Duffy	John Kleparski	Melissa Candela	Susan Drew
Connie Brokaw	John Laur	Melissa Kiefer	Susan O'Hara
Cornelia Hodgson	John Price	Michael Juenke	Susan Rachtman
Curtis Skolnick	Joseph Balbona	Michele Barnett	Susan Stewart
Cynthia Solarz	Judy Klich	Michelle and Monte Nagler	Terra Sherlock
David DeLuca	Julie Davis	Michelle Goodall	Thinh Nguyen
David Navarrete	Kaan Ozberk	Myra Fouts	Thomas Larwa
David Smith	Karin Henderson	Nancy Hoyt	Toby Banfield
Debbi Mulcahy	Katherine Woodward	Natalie Symon	Tom Testerman
Don McGarrigle	Kathleen Stevenson	Nathan Chong	Tony Paul
Donna Clervi	Kathy Bubric	Norwina Mohd Nawawi	Tori Simms
Donna Lucchio	Kathy Harper	Pablo Serrano	William Foulkes
Doug Dulin	Kenneth Lewis	Pamela Redden	Winifrid Williams
Douglas Coover	Kent Wild	Patrice d'Entremont	Zoe Kron
Ed Calnitsky	Kevin Luebbe	Patricia Morrill	
Edward Huckaby	Kevin Ortner		
Fazl Ehsan	Kim Dean		
Frank Jesse			

STUDENT AFFILIATE MEMBERS

Abigail Peterson	Jennifer Irby	Niloo Hosseini
Anthony Karam	Jie Yin	Nirit Pilosof
Babafemi Ade Aina	Jinoh Park	Paul Muir
Beth Eckel	Jon Wood	Paula Gomez Vela
Brittney Peters	Julie El Taher	Princess Macaraeg
Celes Leonard	Jumana Alderazi	Rafiq Elmansy
Charles Clay	Kathryn Roche	Rayna Kelley
Christy Ziesmer	Katie Reed	Rebecca Barnes
Cindy McClure	Kerry Churchill	Renee Watson
Dana Jacobs	Lisa Platt	Ryan Heusinkveld
Danielle McCarthy	Lori Dyer	Saifullah Khan
Dawn Hershberger	Madison Bickel	Sara Cooper
Deserae Harstad	Maria-Elena Spina	Sarah Atkinson
Diane Guevara	Mariane Ferri	Sarah King
Donald Levy	Mario Ayodele	Saraswathy Venkataraman
Ella Bailey	Mary Bradley	Shanna Belyk
Enela Sula	Maurya Cockrell	Shoshana Yardley
Estefania Tenorio	Meehwa Ann Turner	Sigal Rosenfeld
Fabiane Castro	Melissa Brown	Sophia Villalobos
Gina Locapo	Michael Love	Stephanie Stiles
Grace Gallagher	Michelle Knox	Talantikite Soundouss Ismahane
Helene Amouzgar	Michelle McGrory	Twee Andersen
Haley Buscemi	Molly Pierce	Vanessa Pendergrass
Hamama Alsaboosi	Monica Hughes	Vickie Eisenberg
Haripriya Sathyanarayanan	Laura Maher	Xin Wang
Heather Taylor	Muma Blaise	Zaharenia Tsikopoulos
Hui H. Teo	Naomi Thomas	Zaki Alshuwikhat
Jason Hwang	Nayfitd Simons-Hejazi	

BUILT ENVIRONMENT NETWORK MEMBERS

Boldt*	Indian Health Services	Steelcase Health*
Boston Medical Center	Kaiser Permanente	WellStar
Bronson Health	Mazzetti*	Yale New Haven
Defense Health Agency	Mazzetti+GBA*	
Facilities Guidelines Institute	MetroHealth	
	RUSH System for Health	

*Sponsor

AECOM Imagine it.
Delivered.

AECOM congratulates Dublin Methodist Hospital on receiving the Center for Health Design's 2018 Evidence-Based Design Touchstone Gold Award, and its impact on the design of healthcare facilities across the U.S.

We also extend best wishes and appreciations to the Center for Health Design on its 25th anniversary, for its knowledge, support and guidance of healthcare design professionals around the world.

aecom.com





CAMA

Congratulations to The Center for Health Design
for making a difference these last 25 years.

CAMA LAB, STUDIO & COLLECTION
CAMAINC.COM



Congratulations to **The Center for Health Design**
on celebrating **25 years**.



**BERNERS
SCHOBER**
architecture + engineering + interiors

EYP celebrates
and congratulates
The Center for 25 years
of healthcare design
improvements.



EYP /
eypae.com/healthcare

CONGRATULATIONS TO THE CENTER FOR HEALTH DESIGN ON 25 YEARS OF INDUSTRY CHANGING ACCOMPLISHMENTS

Koffel Associates is *your* direct line to an expert.

**PROVIDING FIRE PROTECTION SERVICES
FOR PRIVATE, PUBLIC, AND
GOVERNMENT HEALTH CARE FACILITIES
FOR MORE THAN 30 YEARS**



Our Health Care Services Include:

- Analyze existing suite configurations for compliance with NFPA 101 Life Safety Code
- Egress map development
- Evacuation program development and training
- Fire Alarm System Design
- Fire Protection Asset Management review
- Fire Protection Documentation review and organization
- Fire Protection Water tank design and analysis
- Fire pump performance analysis
- Fire Suppression System Design
- Generate NFPA 101 Life Safety Code equivalency /waivers for submission to accrediting organizations / CMS
- Life Safety Assessment using electronic survey tool
- Mass Notification System Design
- NFPA 25 Inspection, Testing, and Maintenance program gap analysis
- Perform existing locking arrangement assessment per requirements of NFPA 101 and State / City Building Code
- Plan review services
- Staff training
- Third Party Review
- Water flow testing support (standpipe, main drain, etc.)
- Water supply analysis and design
- Zoned evacuation program implementation




EXPERTLY ENGINEERING SAFETY FROM FIRE®

Offices: Maryland / Connecticut / Massachusetts / North Carolina

410-750-2246

www.koffel.com



**NBBJ would like
to congratulate
The Center for
Health Design
celebrating
25 years!**

nbbj



Smith Hager Bajo

**Improving the health
environment for women &
children. By design.**

Smith Hager Bajo has shared The Center's passion in establishing this generation's highest standards for women and children's health services.

Contact Judy Smith at jsmith@shbajo.com to learn how our specialized tools and clearinghouse of resources can help you plan for the next generation.

Congratulations to The Center for Health Design on 25 years!



PERKINS+WILL
CONGRATULATES
THE CENTER FOR HEALTH DESIGN
∞ 25 YEARS OF DISRUPTING THE DESIGN INDUSTRY ∞



PORCELANOSA®

HEALTHCARE DESIGN SOLUTIONS



RECEPTION DESK KRION® - KLIFE
PROJECT ORTOPLUS - MADRID, SPAIN

KRION®
PORCELANOSA
SOLID SURFACE



KLIFE

PORCELANOSA CONGRATULATES THE CENTER FOR 25 YEARS OF HEALTHCARE IMPROVEMENTS!

CALIFORNIA | COLORADO | CONNECTICUT | DISTRICT OF COLUMBIA | FLORIDA | GEORGIA | ILLINOIS
MARYLAND | MASSACHUSETTS | NEW JERSEY | NEW YORK | PENNSYLVANIA | TEXAS | WASHINGTON

1.877.PORSA.US | www.porcelanosa-usa.com | info@porcelanosa-usa.com

Portland
Seattle
Los Angeles

Washington DC
New York
Vancouver BC

Architecture | Urban Design | Interior Design
Visit Us: zgf.com

ZGF

Congratulations to
the **Center for
Health Design** for

25

Inspiring Years

Ann & Robert H. Lurie
Children's Hospital of Chicago



St. Charles Bend Cancer Center



Beacon Children's
Hospital Expansion



Memorial Sloan-Kettering
Brooklyn Infusion Center

**DESIGN
CAN**

Celebrating 25 YEARS

Join us as The Center for Health Design celebrates 25 years of fostering measurable improvements in healthcare facilities, medical outcomes, and the experience of patients and staff.



THE CENTER FOR HEALTH DESIGN®

The Center for Health Design is a nonprofit 501c(3) organization whose mission is to transform healthcare environments for a healthier, safer world through design research, education and advocacy.

1850 Gateway Blvd., Suite 1083
Concord, CA 94520
Tel 925.521.9404
healthdesign.org



<https://www.facebook.com/CenterHealthDesign>



https://twitter.com/CHD_tweets



<https://www.youtube.com/user/HEALTHDESIGN>



<https://www.linkedin.com/company/the-center-for-health-design>