



25th Anniversary Celebration & Silent Auction

Healthcare Design Expo and Conference
Phoenix, Arizona
November 10-13, 2018



DESIGNCAN

Unleashing Design's Healing Power

Celebrating 25 Years.
Help us Build the Next 25.

The Mission of The Center for Health Design:

To transform environments for a healthier, safer world through design research, education, and advocacy.

The Center for Health Design advances best practices and empowers healthcare leaders with quality research that demonstrates the value of design to improve health outcomes, patient experience of care, patient and staff safety and provider/staff satisfaction and performance.

Through design research, education, and advocacy, we're leading the way in transforming hospitals, clinics, wellness centers, doctor's offices, and residential care facilities for a safer, healthier tomorrow.

Dear Friends,

The Center for Health Design has been the leading voice and resource for professionals focusing their efforts on developing the best, most effective healthcare environments. For more than 25 years, The Center has provided knowledge, professional support, and guidance for all who are interested in improving the way healthcare environments are designed and built.

As we plan the next 25 years, we are excited by the many opportunities before us and the ability to continue to drive and shape the ways healthcare facilities and environments deliver care to patients and improve the ability of those working in them to provide care. We have identified what it will take to remain the leading voice and advocate in our field and are excited to move forward with these initiatives. We will focus our efforts in three specific areas including:



Research Based Practices which will include recording best practices and identifying ways to connect and unify the healthcare environment. This will ensure designers and architects are able to understand the most current and effective interventions in the design of healthcare environments.

Future Focused Expansion reflects our desire to bring the knowledge we have attained through our work in acute facilities and apply that knowledge to other areas of health such as the home and community based settings.

Standardized Post-Occupancy Evaluation through the creation of a database accessible to all members and Affiliates.

The participation and dedication of our supporters has allowed The Center for Health Design to attain the goals it originally set for itself 25 years ago. As we plan for the continued growth and expansion of our organization, we will again look to those who recognize the value The Center provides to our field, to those who work in the healthcare field, and especially to those patients who benefit from improved outcomes.

I thank you for your past support and invite you to join me in this next phase of our evolution because as we all know, design has the power to impact and influence many things... **Design Can.**

Sincerely,

Debra J. Levin, Hon FASID, EDAC

President and CEO

The Center for Health Design

In Gratitude

Thank you to the following organizations for making our reception and auction possible.

Reception Partners

architecture+



SMITHGROUP



Auction Donors

AECOM

AESTHETICS INC

Allsteel

beagleman's



CAMA

EYP/



HermanMiller



nbbj



PERKINS+WILL

PORCELANOSA
TILE · KITCHEN · BATH · HARDWOOD



Smith Hager Bajo

Steelcase
HEALTH



ZULU NYALA
Experience the Magic of Africa



VIP Reception

A special celebration to honor those who have contributed to and made The Center's work possible.

Saturday, November 10, 2018

6:00pm – 8:00pm

First Floor – North 124 A/B

Special thanks to our Reception hostess, Pattie Moore

Pattie Moore is an internationally renowned gerontologist and designer, serving as a leading authority on consumer lifespan behaviors and requirements.

Moore has been named by ID Magazine as one of The 40 Most Socially Conscious Designers in the world and was selected in 2000, by a consortium of news editors and organizations, as one of The 100 Most Important Women in America. Syracuse University has selected

Moore for a 2012 Honorary Doctorate for serving as a “guiding force for a more humane and livable world, blazing a path for inclusiveness, as a true leader in the movement of Universal Design.” ABC World News featured Moore as one of 50 Americans Defining the New Millennium.



Online Auction

Iconic Items and Engaging Experiences

Closes November 17 at 7pm PST

Support the future of The Center for Health Design by bidding on one (or more) of these great items and experiences. Additional items available online.

To view and bid on items, visit:

<https://www.32auctions.com/centerforhealthdesign>

How to use the QR code:

- 1** Install a QR code reader on your phone.
Recommendations: Download the application QR Reader for iPhone or QR Code Reader for other smartphones.
- 2** Open the application once it is finished installing.
- 3** Hold your device so that is clearly visible within your smartphone screen.
- 4** Your smartphone reads the code and navigates to the intended destination, which does not happen instantly. It may take a few seconds on most devices.



Auction Items

Entertainment

San Diego Zoo and Safari Park Adventure

San Diego Zoo Admission, Safari Park Caravan, Estancia La Jolla 3-Night Stay in San Diego with Airfare for 4

Minimum Bid: \$5,250

Estimated Value: \$7,411

Details:

- 4 tickets for a San Diego Zoo Safari Park Caravan Adventure
- 4 tickets to the San Diego Zoo
- 3-night stay (1 room) in a deluxe guest room at the Estancia La Jolla Hotel & Spa (San Diego)
- Round-trip coach class airfare for 4 from within the 48 contiguous U.S. to San Diego, CA
- Winspire booking & concierge service



New York City Broadway Experience!

For a night out on the town you will receive two orchestra or front mezzanine seats for your choice of the following current Broadway shows: Book of Mormon, Wicked, Mamma Mia, Jersey Boys, Rock of Ages, The Lion King, The Phantom of the Opera, and many others.

Minimum Bid: \$3,800

Estimated Value: \$4,800

Details:

- 3 Night Double Occupancy 4 Star Hotel Accommodations, subject to availability
- 2 Orchestra or front mezzanine tickets to your choice of current Broadway shows *subject to availability
- Roundtrip Economy Class Airfare for (2) between two major airports within the 48 contiguous United States, subject to availability
- Concierge service to assist you in planning this exciting experience



**Excludes Hamilton, Dear Evan Hansen and Frozen*

Auction Items

Home & Garden

Eames Lounge Chair and Ottoman

A universally recognized form that brings comfort and style to interiors everywhere

Minimum Bid: \$3,000

Estimated Value: \$5,295

Details:

- Hand-assembled
- Individually upholstered and replaceable cushions
- Die-cast aluminum back braces and bases
- Built-in swivel mechanism
- Resilient natural rubber shock mounts
- Adjustable stainless-steel glides
- Shipped by Herman Miller

Description:

A timeless classic, the Eames Lounge Chair and Ottoman was introduced in 1956. At the time, there was nothing like it—and all these years later, that's still the case. It's no wonder the design has been in high demand and continuous production ever since. Made in USA by Herman Miller®, Designed by Charles and Ray Eames for Herman Miller®.

Donor: Herman Miller



Auction Items

Home & Garden

Henry Domke Fine Art Gift Certificate

Nature Art

Minimum Bid: \$175

Estimated Value: \$340

Details:

Henry Domke Fine Art 36" x 22.2" Unframed Print Gift Certificate

Description:

Henry Domke's first career was that of a family practice physician. Decades into that career, he began studying at the University of Missouri-Columbia's graduate program in Fine Art. Shortly after, he began creating nature art for hospitals. Choose your artwork from thousands of pieces based on the native plants and animals, coastal landscapes, mountainous terrains, desert scenes, and seashells.

Donor: Henry Domke Fine Art



Auction Items

Home & Garden

Cama Glider

The IOA Healing Touch Collection is designed for stress reduction in any environment through style, comfort and motion.

Minimum Bid: \$1,950

Estimated Value: \$3,900

Details:

- Gliding motion
- Small footprint
- Crumb space clean-out

Description:

The Cama Glider combines a smooth gliding motion with the therapeutic styling of the Cama Series.

Donor: IOA Inc.



Auction Items

Home & Garden

Shell Chair CH07

Standing firm on three legs and making use of premium materials, the Shell Chair CH07 by Coalesse is beautiful, unusual, and completely irresistible.

Minimum Bid: \$1,750

Estimated Value: \$5,500

Details:

Shell Chair CH07

Denmark – Hans J. Wegner

A three-legged charmer, the Shell Chair is phenomenally strong with its laminated suspension system. It flexes gently as you sit, and is comfortable for long periods. Another historic Hans Wegner chair with its own distinct personality.

- Oil and lacquer finishes on oak and walnut
- Carl Hansen paint colors on beech
- Leather or upholstery

Donor: Steelcase Health



Steelcase
HEALTH



Auction Items

Home & Garden

Lisa Frank Photography \$1,800 Gift Certificate

Nature Art

Minimum Bid: \$650

Estimated Value: \$1,800

Details:

\$1800 Gift Certificate Lisa Frank Photography

Description:

Lisa Frank is the MacDowell Colony's Evelyn Stephansson Nef Fellow in photography for 2014-15. She holds an M.F.A. from the Design Studies Department at the University of Wisconsin-Madison. She is an adjunct photography professor in the UW's Art Department. In addition to her main body of photographic work, Lisa has been making "moving pictures" for monitors. These resemble her still composites but are actually video loops with very subtle movement. She continues to explore VR as an expressive medium. For many years Lisa was a working artist in NYC designing textiles, wallpaper and surface treatments for residential and commercial clients.

Donor:

Lisa Frank Photography



Auction Items

Home & Garden

Porcelanosa Showroom \$5,000 Gift Certificate

Visit your local Porcelanosa showroom, where design experts will eagerly help you find the best product that will suit your project's needs.

Minimum Bid: \$2,500

Estimated Value: \$5,000

Details: A \$5,000 gift certificate to be spent at any Porcelanosa location

Description: With over 400 official showrooms, associates, and dealers located throughout the world and a continuously growing distribution network in cities worldwide -including New York, Los Angeles, London, Paris and Milan – Porcelanosa locations are readily accessible for you everywhere. With this \$5,000 gift certificate, choose from a wide product offering including kitchen cabinetry, bathroom furniture and fixtures, hardwood, laminate, glass and stone mosaics, natural stone tiles, and solid surfaces.

Donor: Porcelanosa

PORCELANOSA
TILE · KITCHEN · BATH · HARDWOOD



Auction Items

Apparel

Two New His and Hers Series 3 Apple Watches

Stay active. Stay healthy. Stay connected.

Minimum Bid: \$450

Estimated Value: \$900

Details:

WOMEN'S: Apple Watch Series 3 Smartwatch (GPS + Cellular) 38mm Gold Aluminum Case with Pink Sand Sport Loop

MEN'S: Apple Watch Series 3 Smartwatch (GPS Only) 42mm Space Gray Aluminum Case with Black Sport Band

Description:

Monitor your health. Track your workouts. Get the motivation you need to achieve your fitness goals. And stay connected to the people and information you care about. With Apple Watch Series 3, you can do it all – right from your wrist.

Donor Information:

Allsteel

Allsteel



Auction Items

Apparel and Wine

Beagleman's Gift Basket

Clothing and accessories for the extraordinary.

Minimum Bid: \$70

Estimated Value: \$140

Details:

This Beagleman's Gift Basket is full of fashion items - Enjoy Beagleman's Logo Swag: The "b" Logo Trucker Hat, Three Graphic T-Shirts, and a Navy & Pink Beagle Graphic Bag.

Donor: Beagleman's

beagleman's



Windsor Vineyards – Three Bottles of Wine

Windsor makes wines you'll love

Minimum Bid: \$50

Estimated Value: \$90

Details:

- 2015 Riesling California, Windsor Vineyards
- 2015 Chardonnay, Sonoma County, Windsor Vineyards
- 2015 Cabernet, Windsor Vineyards

Donor: Paladin Healthcare



WINDSOR
VINEYARDS

Auction Items

Sports and Travel

Take A Swing At Chicago From The Rooftop!

Amazing opportunity to enjoy amazing views of a baseball game from a Wrigley Field Rooftop Club!

Minimum Bid: \$2,200

Estimated Value: \$2,450

Details:

Package Experience for Two Includes:

- 2 nights accommodations at either the Fairmont Chicago, the Swissôtel Chicago or Sofitel Chicago Magnificent Mile
- Daily complimentary breakfast
- All-inclusive access passes to a Wrigley Field rooftop for a regular season Chicago Cubs baseball game
- Free concierge reservation service
- All room-related taxes



Napa Valley's Old World Escape Package, Napa, California, USA

Escape to an Old World sanctuary in breathtaking Napa Valley at the idyllic Meritage Resort and Spa.

Minimum Bid: \$4,700

Estimated Value: \$5,300

Details:

- Round trip economy class air for two
- 3 nights accommodations at the Meritage Resort & Spa
- Grgich Hills Estate Winery Tour including a gourmet 3-course lunch in an elegant dining car
- Free concierge reservation service



Auction Items

Sports

Oakland Raiders at Arizona Cardinals Football Tickets – November 18, 2018

November 18, 2018 at State Farm Stadium in Glendale, AZ

Minimum Bid: \$900.00

Estimated Value: \$1,600

Details:

Two sets of club level tickets

Item closes on 11/11/18.

Tickets will be mailed directly from donors to winning bidder.

Description:

Club Level Sideline seats are located on the second tier up from the playing surface, running between the goal lines. This placement near midfield translates to great sight lines of all the action on any part of the field, and with the additional amenities that come with club seating for Cardinals games, these seats are often considered some of the best seats in the stadium.



Club level fans at Cardinals games will enjoy access to upscale club lounges, private entrances, full service bars, cushioned seating, superior leg room, individual cup holders, and access to Club Level guest services personnel. Club level sections are much smaller than most other sections in the stadium, featuring 9 rows in each section.

Donor:

Koffel Associates



Auction Items

Travel

Fairmont Banff Springs, Banff, Canada

Four Night Package for Two

Minimum Bid: \$3,100

Estimated Value: \$3,950

Details:

This Package for Two Includes:

- 4 nights in a Junior Suite for Two
- \$500 Credit Towards Activities, Dining, and Spa
- Daily Breakfast for two including gratuities
- All room-related taxes



Fairmont Monte Carlo, Monte Carlo, Monaco

Fairmont Monte Carlo Package for Two

Minimum Bid: \$3,200

Estimated Value: \$4,600

Details:

- 4 nights in a Luxury Guestroom at the Fairmont Monte Carlo
- \$500 Credit towards Activities, Spa, or Dining
- Daily Breakfast for two including gratuities
- All room-related taxes



Auction Items

Travel

Hyatt Place/Hyatt House Room Nights

Two one-night certificates for either Hyatt Place or Hyatt House

Minimum Bid: \$60 each

Estimated Value: \$120 each

Details:

Two (2) one-night certificates valid at any Hyatt Place or Hyatt House hotel from January 1, 2019 - December 31, 2019. Reservations are subject to availability and must be made in advance.

Donor:

Hyatt Hotels



Hyatt Regency Aruba Resort, Spa and Casino

Retreat to rooms with casual Caribbean elegance and ocean views

Minimum Bid: \$800

Estimated Value: \$1,500

Details:

3 Nights / 4 Days complimentary stay for two persons, tax included.

Donor:

Hyatt Regency Aruba Resort, Spa & Casino



Auction Items

Travel

Rancho Valencia Resort and Spa

Package for Two includes 3 incredible nights in an Agave Suite plus Spa and Dining Credits at the Rancho Valencia Resort and Spa in Rancho Santa Fe, California, USA

Minimum Bid: \$2,995

Estimated Value: \$3,650

Details: this Package for Two Includes:

- 3 incredible nights in an Agave Suite
- \$300 Spa Credit
- \$300 Dining Credit
- Access to ALL of the incredible amenities listed



Tuscany Culinary Escape

Lunch, Winery and Olive Oil Press Tour & Tasting, Hotel Ponte Sisto Rome 2-Night Stay, Renaissance Tuscany Il Ciocco Resort & Spa 5-Night Stay with Airfare for 2

Minimum Bid: \$7,395

Estimated Value: Priceless

Details:

This Experience Includes:

- 2-night stay in a superior room at the Hotel Ponte Sisto, Rome
- 5-night stay in a deluxe room at the Renaissance Tuscany Il Ciocco Resort & Spa (Barga, Lucca)
- Daily breakfast for 2
- Lunch, wine cellar and olive oil mill tour and tasting for 2 at Fattoria Colleverde (Lucca)
- Round-trip coach class airfare for 2 from the 48 contiguous U.S. to Rome, Italy
- Winspire booking & concierge service



Auction Items

Travel

Red Ledges in Heber City, Utah

Four nights/five days in a three-bedroom cottage

Minimum Bid: \$1,500

Estimated Value: \$3,000

Details:

- 3,000 square foot, three-bedroom cottage
- King master bedroom
- Ensuite queen bedroom
- Golf and tennis
- Equestrian programs
- Swim and fitness center
- Deer Valley Ski Resort



Description:

You and a guest will enjoy four nights and five days at the Red Ledges in Heber City, Utah on the dates of your choosing (subject to availability). This three-bedroom cottage features a king master bedroom and an ensuite queen bedroom.

Donor:

MedSpace Innovations



Auction Items

Travel

Tamarack Resort, Tamarack, Idaho

Four-night stay in a three-bedroom condo that sleeps eight guests.

Minimum Bid: \$700

Estimated Value: \$1,400

Details:

- One king bed, one queen bed, two twin beds, and a queen sleeper.
- Full kitchen and dining area on entry level
- Stacked washer/dryer
- Stone fireplace
- Hardwood floors



Note: The Tamarack townhome is not available during holiday periods.

Donor: Koffel Associates



Wild Dunes, Charleston's Island Resort

Four-night stay at the Wild Dunes Resort, Charleston, South Carolina

Minimum Bid: \$700

Estimated Value: \$1,400

Details:

The Lagoon Villa 35 Condo is a bright and charming two bedroom, two bath villa located near the neighborhood pool, tennis center with convenient access to the beach and popular resort amenities. A spacious living room and dining area feature wood floors, full kitchen with bar seating, a dining table for four, and lagoon views. The open floor plan features bedrooms situated on either side of the living room. Sleeps up to six guests include a king bed in one bedroom and two queen beds in the second bedroom with a separate entrance and private balcony overlooking a lush backyard with lagoon view.



Note: The Lagoon Villa Condo is not available during holiday periods.

Donor: Koffel Associates



Auction Items

Travel

Zulu Nyala – South African Photo Safari for Two

6 days and 6 nights accommodation for two people at the Heritage Safari Lodge or the Hemingway Tented style Safari Camp

Minimum Bid: \$3,000

Estimated Value: \$5,950

Details:

Package includes:

- 6 days and 6 nights accommodation for two people at the Heritage Safari Lodge or the Hemingway Tented style Safari Camp (standard room).
- All meals, with gourmet breakfasts and buffet dinners.
- 2 game viewing activities per day on Zulu Nyala Game Reserve in open game vehicles with an experienced ranger.
- A host ranger that will assist in arranging activities during your stay at Zulu Nyala.



Excludes: Airfares, transfers, side trips, drinks, laundry, telephone calls and gratuities.

Donor:

Trevor Shaw, Owner of Zulu Nyala Group

ZULU NYALA
Experience the Magic of Africa



Auction Items Conference

2019 Healthcare Design Expo & Conference

Full Conference Registration

Minimum Bid: \$700.00

Estimated Value: \$1,299.00

Description:

Devoted to how the design of responsibly built environments directly impacts the safety, operation, clinical outcomes, and financial success of healthcare facilities, both now and into the future, this healthcare design conference highlights best practices and top healthcare design products. Attendees have the opportunity to earn continuing education credits, network with peers, discuss best practices, view innovative design products, and influence the direction of the industry as it advances into the future.



Donor:

Emerald Expositions



The Center for Health Design

Thank you from the Board of Directors



Rosalyn Cama, FASID, EDAC
President
CAMA Inc.



Frederick A. Hessler
Retired Managing Director
Citigroup



Thomas M. Jung, RA
Owner
Thomas M. Jung Consulting, LLC



Debra J. Levin, Hon FASID, EDAC
President and CEO
The Center for Health Design



**Avein Saaty-Tafoya, MD, MBA,
HCM, EDAC**
President and CEO
Adelante Healthcare



Frank Weinberg, M.S.
Board Chair
The Center for Health Design

The Center for Health Design

The Advisory Board October 2018

John A. Becker, FACHA, FHFI

Retired Director, Facilities Division
U.S. Defense Health Agency

Susan Dentzer

President and CEO
Network for Excellence in Health
Innovation

Joe Flower, M.A.

CEO
The Change Project, Inc.

Jason Girzadas

Principal
Deloitte Consulting LLP

Robert Heitmeier

*Vice President, Vertical Markets
and Materials*
Steelcase

Sean Hughes

*Vice President and Head of Design
Consulting*
Philips Design

Vijay Kumar, MS

Professor, Institute of Design
Illinois Institute of Technology

Roger Landry, MD, MPH

President
Masterpiece Living, LLC

Mickey McManus

Principal and Chairman of the Board
Maya Design

Donald H. Orndoff

*Senior Vice President, National Facilities
Services*
Kaiser Permanente

David S. Yeh

Sr. Global Solutions Manager – Healthcare
United Technologies Corporation

DIRECTOR EMERITUS

**D. Kirk Hamilton, FAIA, FACHA,
EDAC**

Founding Principal Emeritus
WHR Architects

Jain Malkin, CID, AAHID, EDAC

Evidence-Based Design Consultant

Robin Orr, MPH

President
The Robin Orr Group

**Derek Parker, FAIA, RIBA, FACHA,
EDAC**

Director
Aditazz

Roger S. Ulrich, PhD, EDAC

Professor, Department of Architecture
Center for Healthcare Building Research
Chalmers University of Technology

RESEARCH AND PROJECT PARTNERS

Agency for Healthcare Research and Quality (AHRQ)	California HealthCare Foundation
AIA Academy of Architecture for Health (AAH)	The Donghia Foundation
AIA Design For Aging (DFA)	Facility Guidelines Institute (FGI)
American Society for Healthcare Engineering (ASHE)	Healthier Hospital Initiative
American Society of Interior Designers (ASID)	The Kresge Foundation
BSA LifeStructures	The Mayer-Rothschild Foundation
	Nursing Institute for Healthcare Design (NIHD)
	Research Design Connections (RDC)

THE CENTER FOR HEALTH DESIGN VOLUNTEERS

Advisory Board	Healthcare Design Expo & Conference
Architectural Showcase Review Panel Members	Educational Review Committee
Board of Directors	<i>HERD Journal</i> Editorial Review Board and Advisory Board Members
EBD Touchstone Award Jury Members	Research Coalition
EDAC Advisory Council	
Environmental Standards Council	
Environments for Aging Expo & Conference Educational Review Committee	

CONFERENCE AND PUBLICATION PARTNERS

Emerald Expositions
Healthcare Design Magazine
HERD Journal
SAGE Publications

EDUCATIONAL PARTNERS

architecture+
Grainger
J+J Flooring Group
Stance Healthcare
Tarkett
Whitehall Manufacturing

EVENT PARTNERS

Accurate Lock & Hardware	HDR, Inc	Patcraft
architecture+	IOA Healthcare Furniture	Ponte Guilio
Armstrong Flooring	J+J Flooring Group	Sappi North America
Carstens	Kwalu	Stance Healthcare
Distinctive Art Source	MechoSystems	Steelcase Health
ESa	Metrasens	United Technologies
gapingvoid	nora systems, Inc.	Whitehall Manufacturing
Grainger	One Workplace	

EDAC CHAMPION FIRMS

American Art Resources	Harley Ellis Devereaux
CAMA, Inc.	Kahler Slater Architects, Inc.
CannonDesign	Salvatore Associates

EDAC EDUCATIONAL PARTNER

Steelcase Health

EDAC ADVOCATE FIRMS

ACI Boland	Earl Swensson Associates	Parkin Architects Limited
AECOM	Erdenberger Design Group	Perkins+Will
ACI Boland Architects	Erdman	Peters & Associates
ARCH Design, Artwork & Framing Inc.	Farmboy Fine Arts	Plenary Group
ArchiMed	Forbo Flooring Systems	Progressive AE
Architecture+	Gensler	Salus Healthcare Architecture
Baskerville	Gresham Smith	Silver Thomas Hanley
B+H Architects	Guidon Design Inc.	Skyline Art Services
Bouygues Building Canada	HDR, Inc.	Spellman Brady & Company
Burns & McDonnell	Healthcare Art Consulting	Stantec
CBLH Design	HKS, Inc.	T2 Designs, Inc.
CEI Architecture	Holland Basham Architects	Visions in Architecture
Corgan Associates, Inc.	Kaiser Permanente	Wellness Environments Inc.
CS.i.	Kasian	ZGF Architects
Czopek Design Studio Inc.	Leo A Daly	
Davis Partnership Architects	Mazzetti Inc.	
	Midmark	
	nora systems, Inc.	

AFFILIATE+ MEMBERS

Adelante Healthcare	Grainger	Patcraft
Allsteel	Gresham Smith	Porcelanosa
architecture+	HDR, Inc.	Shaw Contract Group
Berners Schober	Herman Miller Healthcare	SmithGroup
Boulder Associates Inc.	HGA Architects & Engineers, Inc.	Spellman Brady & Company
BSA LifeStructures	Illinois Institute of Technology	Stance Healthcare
Caldwell Associates Architects	Interior Health Authority	Steelcase Health
CAMA, Inc.	J+J Flooring Group	Steffian Bradley Architects
CareATC	Joseph Brant Hospital	Tarkett
Clemson University	JPT Architects	Texas A&M University, Department of Architecture
CR Goodman Associates	Kaiser Permanente	TreanorHL
Defense Health Agency	Kimball Health	U.S. Department of Veterans Affairs
E4H Environments for Health Architecture	Kwalu	University Of Chicago Hospitals
Earl Swensson Associates, Inc.	Main Line Health	University of Kansas, Institute for Health & Wellness Design
Eckroth Planning Group	McMillan Pazdan Smith Architecture	Vhi
Emerald Expositions	Navigant Consulting, Inc.	Washington University in St. Louis
EwingCole	NBBJ	Whitehall Manufacturing
EYP Architecture & Engineering	nora systems, Inc.	
Fraser Health Authority	Northern Arizona Healthcare	
Gapingvoid	One Workplace	
GBBN Architects	Orcutt Winslow	

CORPORATE AFFILIATE MEMBERS

AECOM	Full Circle Systems Engineering	Page Building Group, LLC
Accurate Lock and Hardware	Great American Art	Paladin Healthcare LLC
ARCH Design, Artwork & Framing	Henry Domke Fine Art	Perkins+Will
Armstrong Flooring	HKS, Inc.	Pomarico Design Studio Architecture, PLLC
Ballinger	HOK, Inc.	Ponte Giulio USA
Bernardon	Inventure Design	Puchlik Design Associates, Inc.
Blue Cottage Consulting	IOA Healthcare Furniture	Suppi North America
Buffalo Design	Johnson Johnson Crabtree Architects P.C.	Skyline Art Services
CannonDesign	Kahler Slater Architects, Inc.	Spec Furniture
Carolina An OFS Brands Co.	KI Healthcare	Stantec
Class 1 Inc.	KMD Architects	Veterans4You Inc.
Construction Specialties, Inc.	Levi + Wong Design Assoc Inc.	VHB
Corgan Associates	Man Made Music	Wieland Healthcare
Dirtworks Landscape Architecture, PC	Matthei & Colin Associates	Winco Mfg., LLC
Distinctive Art Source	Mecho	WRNS Studio
Ecore Commercial Flooring	MedSpace Innovations	ZGF Architects Inc.
Exemplis SitOnIt and IDEON	Newcombe Design Associates	Zimmerman Architectural Studios, Inc.

PROFESSIONAL AFFILIATE MEMBERS

Amy Daly	Joost Bende	Paul Levesque
Bob Winters	Judith Smith	Penelope Martin
Bonnie Lewis	Karen Kost	Rhonda Scott
Cathy Dolan-Schweitzer	Kristin Ellingsen	Richard Embers
Christine Hardin	Malcolm Hawkins	Robert Amatuli
Cindy Barr	Marian Carro	Saeed Abu Lawi
David Johnson	Mary Bracken	Sarah Holton
Debra Levin	Melissa Williams	Shehzad Leghari
Eric Ritland	Mohamed Rezgui	Stephen Howard
Jan Kroman	Mona Kines	Walter Jones
Janet Roche	Noe Del Bosque	

INDIVIDUAL AFFILIATE MEMBERS

Aileen Hogan	Frank Sturgeon	Kim Shinn	Patrick Casey
Alena Fisher	Frank Weinberg	Kimberly McMurray	Patti Miles
Amy Miller	Georgeann Burns	Larry Emerson	Paul Toburen
Andrey Montes Jaramillo	Gerry Pilon	Laura Boschetti	Peter Bardwell
Ann Showan-Slade	Ginger Biggerstaff	Laura Busalacchi	Rebecca Block
Annette Marlar	Grace Tunkel	Lauren Schwade	Rebecca Hathaway
Anthony Cavallaro	Gustavo Camarano	Laurie Emery	Renee Moe
Audrey Cavadas	Heather Button	Laurie Placinski	Richard Pizzi
Barbara Dellinger	Holly Morgan	Leilani Gagnaire	Robert J. Waltersdorf
Ben Lee	J. Carlee Adams	Leonard Rozek	Sandra Colatrella
Bernard Mohr	James Morrison	Lipson Sisiolo	Sandra Waller
Blossom Lin	Jamie Levine	Lisa Cini	Seana Patankar
Bryan Brinkman	Jane Rohde	Lisa Pahl	Sejal Mehta
Bryan Langlands	Janet Carpman	Lori Klein	Shari Stein
Candace Reeve	Jason Puchot	Lorissa MacAllister	Sharon Steele
Carmen Preston	Jaynelle Stichler	Lucy Brun	Shawn Suter
Carolien Euser	Jeanette Gamboa	Lucy Stein	Sheryl Valentine
Carolyn Kiss	Jeani Natwick	Marc Schweitzer	Silvia Hoffmann
Casey Blanchard	Jennifer Berryman	Marcus Thorne	Stan Taylor
CC Andrews	Jennifer Low	Mardelle Shepley	Stanley Herman
Cecilia Arroyo	Jill Pable	Margaret Calkins	Stephanie Sompotan
Chris Bachorowski	JoAnn M. Magnatta	Maria Talamo	Stephen Hughes
Chris Reed	Joe Lavigne	Marianne Weber	Steve Christoff
Christine Guzman	Joe Steffes	Mary C. Valmonte	Steven Hanson
Colleen Duffy	John Kleparski	Melissa Candela	Susan Drew
Connie Brokaw	John Laur	Melissa Kiefer	Susan O'Hara
Cornelia Hodgson	John Price	Michael Juenke	Susan Rachtman
Curtis Skolnick	Joseph Balbona	Michele Barnett	Susan Stewart
Cynthia Solarz	Judy Klich	Michelle and Monte Nagler	Terra Sherlock
David DeLuca	Julie Davis	Michelle Goodall	Thinh Nguyen
David Navarrete	Kaen Ozberk	Myra Fouts	Thomas Larwa
David Smith	Karin Henderson	Nancy Hoyt	Toby Banfield
Debbi Mulcahy	Katherine Woodward	Natalie Symon	Tom Testerman
Don McGarrigle	Kathleen Stevenson	Nathan Chong	Tony Paul
Donna Clervi	Kathy Bubric	Norwina Mohd Nawawi	Tori Simms
Donna Lucchio	Kathy Harper	Pablo Serrano	William Foulkes
Doug Dulin	Kenneth Lewis	Pamela Redden	Winifrid Williams
Douglas Coover	Kent Wild	Patrice d'Entremont	Zoe Kron
Ed Calnitsky	Kevin Luebbe	Patricia Morrill	
Edward Huckaby	Kevin Ortner		
Fazl Ehsan	Kim Dean		
Frank Jesse			

STUDENT AFFILIATE MEMBERS

Abigail Peterson	Jennifer Irby	Niloo Hosseini
Anthony Karam	Jie Yin	Nirit Pilosof
Babafemi Ade Aina	Jinoh Park	Paul Muir
Beth Eckel	Jon Wood	Paula Gomez Vela
Brittney Peters	Julie El Taher	Princess Macaraeg
Celes Leonard	Jumana Alderazi	Rafiq Elmansy
Charles Clay	Kathryn Roche	Rayna Kelley
Christy Ziesmer	Katie Reed	Rebecca Barnes
Cindy McClure	Kerry Churchill	Renee Watson
Dana Jacobs	Lisa Platt	Ryan Heusinkveld
Danielle McCarthy	Lori Dyer	Saifullah Khan
Dawn Hershberger	Madison Bickel	Sara Cooper
Deserae Harstad	Maria-Elena Spina	Sarah Atkinson
Diane Guevara	Mariane Ferri	Sarah King
Donald Levy	Mario Ayodele	Saraswathy Venkataraman
Ella Bailey	Mary Bradley	Shanna Belyk
Enela Sula	Maurya Cockrell	Shoshana Yardley
Estefania Tenorio	Meehwa Ann Turner	Sigal Rosenfeld
Fabiane Castro	Melissa Brown	Sophia Villalobos
Gina Locapo	Michael Love	Stephanie Stiles
Grace Gallagher	Michelle Knox	Talantikite Soundouss Ismahane
Helene Amouzgar	Michelle McGrory	Twee Andersen
Haley Buscemi	Molly Pierce	Vanessa Pendergrass
Hamama Alsaboosi	Monica Hughes	Vickie Eisenberg
Haripriya Sathyanarayanan	Laura Maher	Xin Wang
Heather Taylor	Muma Blaise	Zaharenia Tsikopoulos
Hui H. Teo	Naomi Thomas	Zaki Alshuwikhat
Jason Hwang	Nayfitd Simons-Hejazi	

BUILT ENVIRONMENT NETWORK MEMBERS

Boldt*	Indian Health Services	Steelcase Health*
Boston Medical Center	Kaiser Permanente	WellStar
Bronson Health	Mazzetti*	Yale New Haven
Defense Health Agency	Mazzetti+GBA*	
Facilities Guidelines Institute	MetroHealth	
	RUSH System for Health	

*Sponsor

AECOM Imagine it.
Delivered.

AECOM congratulates Dublin Methodist Hospital on receiving the Center for Health Design's 2018 Evidence-Based Design Touchstone Gold Award, and its impact on the design of healthcare facilities across the U.S.

We also extend best wishes and appreciations to the Center for Health Design on its 25th anniversary, for its knowledge, support and guidance of healthcare design professionals around the world.

aecom.com

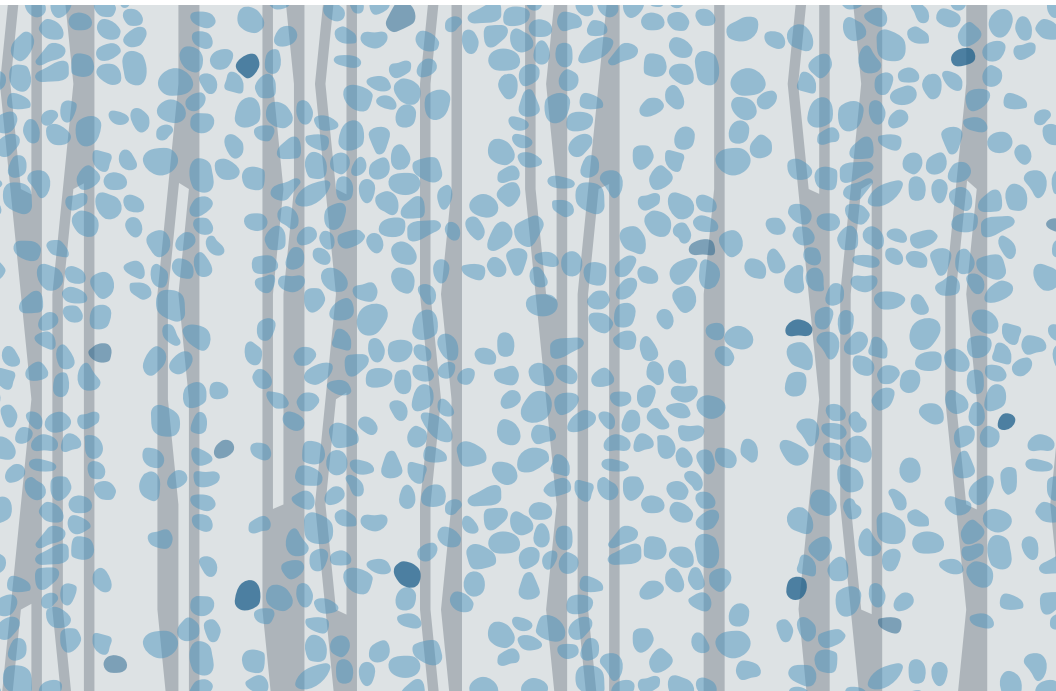




CAMA

Congratulations to The Center for Health Design
for making a difference these last 25 years.

CAMA LAB, STUDIO & COLLECTION
CAMAINC.COM



Congratulations to **The Center for Health Design**
on celebrating **25 years**.



**BERNERS
SCHOBER**
architecture + engineering + interiors

EYP celebrates
and congratulates
The Center for 25 years
of healthcare design
improvements.



EYP /
eypae.com/healthcare

CONGRATULATIONS TO THE CENTER FOR HEALTH DESIGN ON 25 YEARS OF INDUSTRY CHANGING ACCOMPLISHMENTS

Koffel Associates is *your* direct line to an expert.

**PROVIDING FIRE PROTECTION SERVICES
FOR PRIVATE, PUBLIC, AND
GOVERNMENT HEALTH CARE FACILITIES
FOR MORE THAN 30 YEARS**



Our Health Care Services Include:

- Analyze existing suite configurations for compliance with NFPA 101 Life Safety Code
- Egress map development
- Evacuation program development and training
- Fire Alarm System Design
- Fire Protection Asset Management review
- Fire Protection Documentation review and organization
- Fire Protection Water tank design and analysis
- Fire pump performance analysis
- Fire Suppression System Design
- Generate NFPA 101 Life Safety Code equivalency /waivers for submission to accrediting organizations / CMS
- Life Safety Assessment using electronic survey tool
- Mass Notification System Design
- NFPA 25 Inspection, Testing, and Maintenance program gap analysis
- Perform existing locking arrangement assessment per requirements of NFPA 101 and State / City Building Code
- Plan review services
- Staff training
- Third Party Review
- Water flow testing support (standpipe, main drain, etc.)
- Water supply analysis and design
- Zoned evacuation program implementation




EXPERTLY ENGINEERING SAFETY FROM FIRE®

Offices: Maryland / Connecticut / Massachusetts / North Carolina

410-750-2246

www.koffel.com



**NBBJ would like
to congratulate
The Center for
Health Design
celebrating
25 years!**

nbbj



Smith Hager Bajo

**Improving the health
environment for women &
children. By design.**

Smith Hager Bajo has shared The Center's passion in establishing this generation's highest standards for women and children's health services.

Contact Judy Smith at jsmith@shbajo.com to learn how our specialized tools and clearinghouse of resources can help you plan for the next generation.

Congratulations to The Center for Health Design on 25 years!



PERKINS+WILL
CONGRATULATES
THE CENTER FOR HEALTH DESIGN
∞ 25 YEARS OF DISRUPTING THE DESIGN INDUSTRY ∞



PORCELANOSA®

HEALTHCARE DESIGN SOLUTIONS



RECEPTION DESK KRION® - KLIFE
PROJECT ORTOPLUS - MADRID, SPAIN

KRION®
PORCELANOSA
SOLID SURFACE



KLIFE

PORCELANOSA CONGRATULATES THE CENTER FOR 25 YEARS OF HEALTHCARE IMPROVEMENTS!

CALIFORNIA | COLORADO | CONNECTICUT | DISTRICT OF COLUMBIA | FLORIDA | GEORGIA | ILLINOIS
MARYLAND | MASSACHUSETTS | NEW JERSEY | NEW YORK | PENNSYLVANIA | TEXAS | WASHINGTON

1.877.PORSA.US | www.porcelanosa-usa.com | info@porcelanosa-usa.com

Portland
Seattle
Los Angeles

Washington DC
New York
Vancouver BC

Architecture | Urban Design | Interior Design
Visit Us: zgf.com

ZGF

Congratulations to
the **Center for
Health Design** for

25

Inspiring Years

Ann & Robert H. Lurie
Children's Hospital of Chicago



St. Charles Bend Cancer Center



Beacon Children's
Hospital Expansion



Memorial Sloan-Kettering
Brooklyn Infusion Center

**DESIGN
CAN**

Celebrating 25 YEARS

Join us as The Center for Health Design celebrates 25 years of fostering measurable improvements in healthcare facilities, medical outcomes, and the experience of patients and staff.



THE CENTER FOR HEALTH DESIGN®

The Center for Health Design is a nonprofit 501c(3) organization whose mission is to transform healthcare environments for a healthier, safer world through design research, education and advocacy.

1850 Gateway Blvd., Suite 1083
Concord, CA 94520
Tel 925.521.9404
healthdesign.org



<https://www.facebook.com/CenterHealthDesign>



https://twitter.com/CHD_tweets



<https://www.youtube.com/user/HEALTHDESIGN>



<https://www.linkedin.com/company/the-center-for-health-design>