

Georgios Dimitrellos & Dimitrios Christodoulakis

The flora of Mount Timfristos (N.W. Sterea Ellas, Greece)

Abstract

Dimitrellos, G. & Christodoulakis, D.: The flora of Mount Timfristos (N.W. Sterea Ellas, Greece) — *Fl. Medit.* 5: 9-51. 1995 — ISSN 1120-4052.

Topography, geology and flora of Mt Timfristos are discussed. The vascular flora consists of 1139 taxa, 411 of which are reported here for the first time. The endemic element is, in particular, analysed. 111 Balkan endemics (25 are new records) and 89 Greek endemics (11 are also new records) are present on Mt Timfristos, two of the Greek endemics are so far known only from Timfristos. 14 taxa are characterized as Rare and 1 taxon as Vulnerable. A species list is provided with notes on localities and voucher material.

Introduction

Until today several remarkable botanical studies have been made for different regions of the Greek area. However, for many Greek mountain areas detailed studies on their flora and vegetation have not been carried out. That is because in the past many botanists preferred to deal only with the biosystematic study of some genera, or with the study of large areas usually in one vegetative period in order to discover rare species.

In order to have as complete an exploration as possible of the flora and vegetation of Greek mountains, the study of the flora and vegetation of Timfristos mountain is carried out as a PhD Thesis by the first author. Although Mt Timfristos presents a particular phytogeographical interest because of its geographical position and its geological structure, previous botanical studies are neither complete nor detailed.

In addition, we hope that this study will contribute, in its permitting degree, to the vast survey of "Flora Hellenica" carried out through a cooperation of the Botanical Institutes of Patras and Copenhagen Universities, and the Botanical Museums of Berlin and Lund.

The most important references for the flora of Timfristos are: "Conspectus Florae Graecae" (Halácsy 1901-1904), who mentions 178 taxa, Ganiatsas (1940), mentioning 249 taxa, and the Mountain Flora of Greece I, II (Strid 1986, Strid & Tan 1991), mentioning 426 taxa. Also studies of the vegetation and phytogeography of Mt Timfristos have been made by Phitos (1960), Voliotis (1976), and Barbero & Quezel (1976).

Topography - Geology

Timfristos mountain is situated in southern Greece (Sterea Ellas) to the N.E. of Karpenisi town, and it forms a natural border between northern and southern Greece. It

also belongs to the mountain range which separates Western and Eastern Sterea Ellas. It is bordered by the ravines Kastanorema and Kati (to the east), Mega Rema (to the south), Agiotriaditiko Rema and the peak of Tsouka (to the north) as well as the Tavropos river (to the west). The geographical position of Timfristos mountain is approximately between 38° 52' to 39° 02' N and 21° 39' to 21° 57' E (Fig. 1).

Timfristos mountain is N.W.-S.E. oriented. Its lowest altitude is ca. 350 m and its highest is 2315 m (Veluchi peak). The main mountain mass is surrounded by many peaks such as Symbetheriako (2104 m), Anemos (1998 m), Kumbi (1863 m), etc., which are separated by deep ravines and streams.

From a geological point of view, Timfristos belongs to the Olonos-Pindos geotectonic zone (Mountrakis 1985). The eastern half of the area under study is almost entirely composed of sandy and clayey flysch of Eocenic and Palaeocenic origin in separated or mixed deposits. In its western part, hard, mainly platy limestones occur, belonging to the Cretaceous, Jurassic and Triassic period, locally mixed with siliceous schists and cherts. In the valleys and the river beds alluvial deposits also exist (Bornovas & Rondogianni-Tsiambaou 1983).

Material and methods

This study is based on collections and field observations which were made from July 1988 to July 1993 mainly by the first author. His permanent stay in that area during that period contributed, as far as possible, to the complete collection of plant specimens from different seasons and various places. Herbarium specimens are deposited at UPA. The nomenclature is according to Med-Checklist (Greuter & al. 1984-1989), Mountain Flora of Greece (Strid 1986, Strid & Tan 1991), and Flora Europaea (Tutin & al. 1964-1980). The plant list also contains bibliographical references.

The sequence of families, genera and species in the plant list is alphabetical.

Abbreviations and symbols

The following are used:

Chr.	=	D. Christodoulakis
Dim.	=	G. Dimitrellos
Gan.	=	K. Ganiatsas
Georg.	=	Th. Georgiadis
Obs.	=	Observation only, no herbarium specimens
Conif.	=	Coniferous
*	=	New record
∫	=	Cultivated
°	=	Greek endemic
.	=	Balkan endemic

Results

Collecting areas

The areas where the collections took place are given below. There are also corresponding numbers in the species list as well as on the map (Fig. 1).

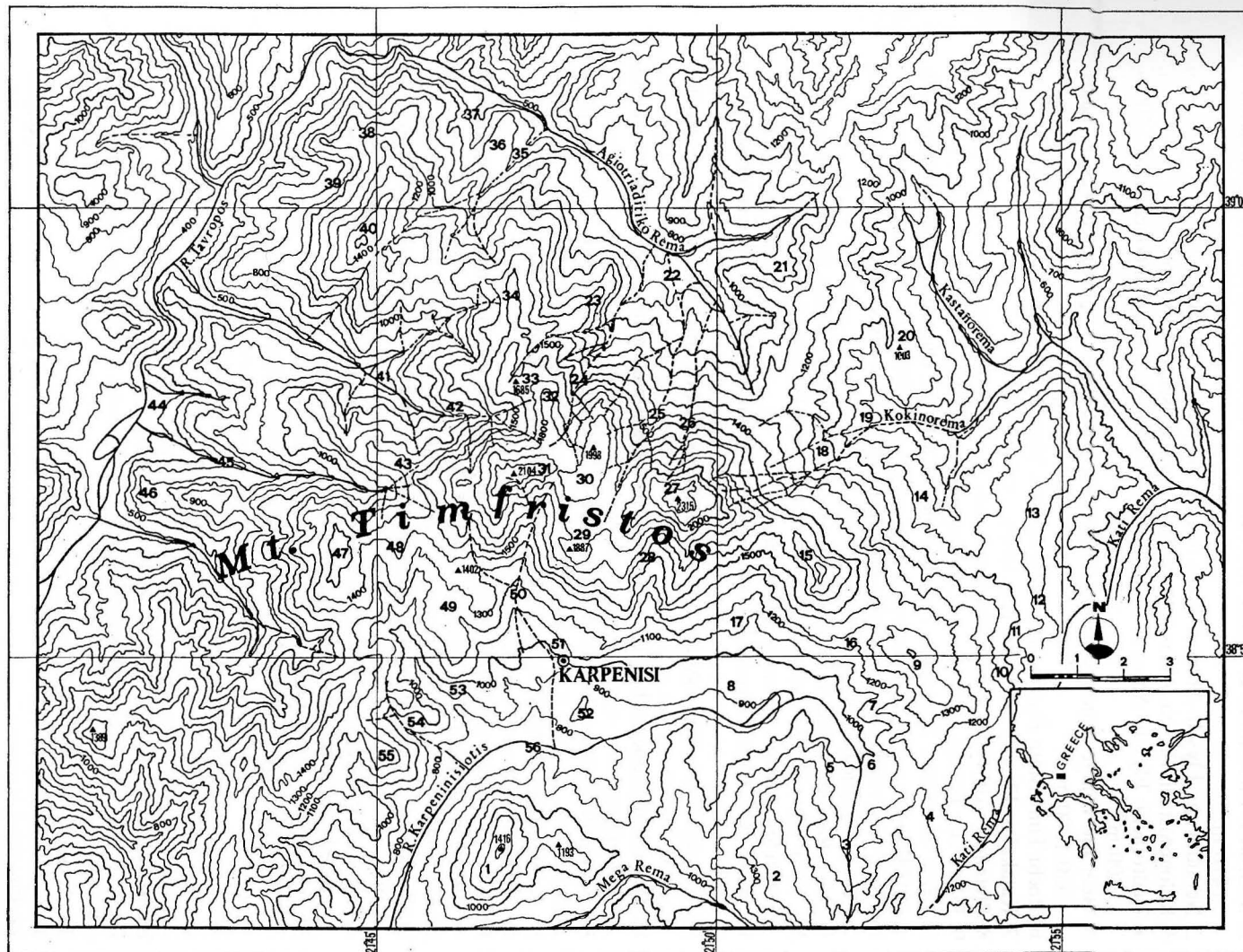


Fig. 1. Topographical map of Timfristos mountain. Numbers represent the position of the areas referred to by code numbers in the species list.

1. Koniskos: Limestones & flysch. Macchie, Abies & deciduous forests, pastures. 800-1416 m.
2. Neraidovuni: Flysch. Abies & Pinus forests, pastures. 1100-1491 m.
3. Kalogerostani: Flysch. Abies forests, Castanea stands. 1050-1300 m.
4. Kedrorachi: Flysch. Abies & Pinus forests, Platanus stands, abandoned fields. 1000-1300 m.
5. Near the village Agios Nikolaos: Flysch. Castanea forests, Quercus & Abies stands. 950-1300 m.
6. Rachi Timfristou: Flysch. Abies forests. 950-1085 m.
7. Katakalos: Flysch. Abies & Pinus forests. 1000-1300 m.
8. Platania: Alluvial deposits. Platanus stands & scrubs with Juniperus. 850-950 m.
9. Pikrovuni: Flysch. Abies forests, scrubs, pastures. 1350-1515 m.
10. Near the village Timfristos: Flysch. Abies, Castanea, Quercus & mixed forests. 850-1000 m.
11. Near the village Mesea Kapsi: Flysch. Deciduous & mixed forests, Abies stands, abandoned fields. 850-1000 m.
12. Near the village Kapsi: Flysch. Quercus, Abies or mixed forests. 800-1000 m.
13. Near the village Merkada: Flysch. Castanea, Quercus, Abies or mixed forests, abandoned fields, pastures. 750-950 m.
14. Near the village Mavrilo: Flysch. Castanea, Quercus, Abies or mixed forests. 900-1000 m.
15. Kumbi: Limestones. Abies forests, Juniperus foetidissima stands, pastures, rocks. 1400-1863 m.
16. Petra: Limestones. Abies forests, Juniperus foetidissima stands, rocks, pastures. 1100-1374 m.
17. Keramidi: Flysch. Quercus & Abies forests, Platanus stands, scrubs, pastures. 1000-1300 m.
18. Kokkinorema: Flysch & limestones. Abies forests, Platanus stands, scrubs, pastures. 1200-1500 m.
19. Near the village Neochorion: Flysch & alluvial deposits. Quercus or Abies forests, platanus stands, forest openings. 700-1100 m.
20. Isomata: Flysch. Quercus, Castanea, Abies or mixed forests. 800-1000 m.
21. Tsuka: Flysch. Abies, Pinus, Quercus & mixed forests, scrubs, pastures. 1150-1340 m.
22. Near the village Agia Triada: Flysch & alluvial deposits. Quercus, Castanea, Abies & mixed forests, abandoned fields. 800-1100 m.
23. Amalorachi: Limestones. Abies forests, pastures. 800-1350 m.
24. Watershed rivulet Neraidias: Limestones, alluvial deposits, flysch. Abies stands, rocks, pastures. 1300-1850 m.
25. Watershed rivulet Poros: Limestones. Pastures, rocks. 1400-2100 m.
26. Watershed rivulet Mesovunion: Limestones. Pastures, rocks. 1300-2100 m.
27. Veluchi: Limestones & radiolarites. Rocks, pastures. 1600-2315 m.
28. Rovolaka: Limestones. Abies forests, pastures. 1100-1800 m.
29. Karavaki: Limestones & radiolarites. Abies forests, scrubs, pastures, rocks. 1200-1887 m.
30. Anemos: Limestones. Pastures, rocks. 1700-2000 m.
31. Symbetheriako: Limestones & radiolarites. Abies forests, pastures. 1400-2104 m.
32. Pirgaki: Limestones. Pastures, rocks. 1500-1880 m.
33. Karavaki: Limestones. Abies forests, pastures. 1400-1685 m.

34. Plati: Limestones & flysch. Abies forests, pastures. 1300-1540 m.
35. Platanorema: Clays, sands and gravels, limestones, flysch. Abies forests, Platanus stands & deciduous forests. 600-1000 m.
36. Profitis Ilias: Limestones. Abies & deciduous forests. 600-870 m.
37. Near the village Domiani: Limestones, clays, sands and gravels. Abies forests, Platanus stands. 700-900 m.
38. Pirgos: Limestones & flysch. Macchie, deciduous forests, Abies & mixed forests. 500-1180 m.
39. Near the village Papadia: Limestones, flysch. Abies & Quercus forests, pastures. 600-900 m.
40. Papadia pasture: Limestones, radiolarites. Macchie, Abies forests, pastures. 900-1514 m.
41. Rivulet Stenomatotiko: Limestones, radiolarites, alluvial deposits. Abies forests, Platanus stands, deciduous forests. 600-1000 m.
42. Steni: Limestones. Abies forests, rocks. 1000-1500 m.
43. Kokkino diaselo: Limestones & radiolarites. Abies forests, pastures. 1100-1418 m.
44. River Tavropos: Alluvial. Stands with Platanus & Salix. 350-380 m.
45. Rivulet Aroniados: Limestones, radiolarites, flysch. Macchie, deciduous & mixed forests, Platanus stands, abandoned fields. 350-800 m.
46. Templa: Limestones. Macchie. 350-784 m.
47. Perdikotopos: Limestones, radiolarites. Abies forests, scrubs, pastures, rocks. 900-1572 m.
48. Katsandoni: Limestones. Abies forests, pastures. 1200-1530 m.
49. Profitis Ilias: Limestones. Macchie, Abies forests, pastures. 1100-1362 m.
50. "Klarotos": Alluvial deposits. Pastures, scrubs. 1100-1500 m.
51. Near the city Karpenisi: Alluvial, limestones, flysch. Macchie, deciduous scrubs. 900-1100 m.
52. Agios Dimitrios: Limestones. Macchie, deciduous forests, pastures, rocks, Pinus stands. 800-980 m.
53. Near the village Gorgianades: Limestones, flysch, alluvial deposits. Macchie, Abies forests, pastures. 800-1100 m.
54. Near the village Koryschades: Limestones & radiolarites. Abies forests, pastures. 800-1100m.
55. Psilo kotroni: Limestones. Macchie, Abies forests. 750-1311 m.
56. River Karpenisiotis: Alluvial deposits. Stands with Salix, Alnus, Platanus, etc. 800-1100 m.

Species list

PTERIDOPHYTA

Equisetaceae

**Equisetum arvense* L.: 9 (Dim. 66), 8 (Dim. 2153). Wet places in torrents.

Ophioglossaceae

Botrychium lunaria (L.) Swartz: (Strid 1986: 13).

Polypodiaceae

* *Adiantum capillus-veneris* L.: 9 (Dim. 31), 40 (Dim. 1576). Moist places, in torrents.

Asplenium ceterach L.: 16 (Dim. 1561), 29 (Dim. 2053). Crevices of limestone rocks.

* *A. onopteris* L.: 7 (Dim. 391). Rocky places in Abies forests.

A. scolopendrium L.: (Halácsy 1904: 470).

- * *A. septentrionale* (L.) Hoffm.: 42 (Dim. 1914, 4359). Shaded & wet rocky places.
A. trichomanes L. subsp. *trichomanes*: 54 (Dim. 251), 15 (Dim. 1683), 29 (Dim. 1759).
 Semi-shade rocky places.
Athyrium filix-femina (L.) Roth: (Strid 1986: 27).
Cystopteris fragilis (L.) Bernh.: 31 (Dim. 1420), 15 (Dim. 1684), 29 (Dim. 1758). Rock
 crevices, ravines.
Dryopteris submontana (Fraser-Jenkins & Jermy) Fraser-Jenkins: 16 (Dim. 78), 30 (Dim.
 198). Rock crevices, wet & rocky places.
Polypodium vulgare L.: 17 (Dim. 32). Shaded rocks.
Polystichum aculeatum (L.) Roth: (Strid 1986: 31).
Pteridium aquilinum (L.) Kuhn: 16 (Dim. 282). Forest clearings, pastures.

GYMNOSPERMAE

Cupressaceae

- Juniperus communis* L. subsp. *alpina* (Suter) Celak: 15 (Dim. 683), 25 (Dim. 2941), 30
 – (Dim. 4559). Rocky places, pastures.
J. communis L. subsp. *hemisphaerica* (J. & C. Presl) Nyman: 42 (Dim. 1872), 25 (Dim.
 2959). Pastures.
J. foetidissima Willd.: 16 (Dim. 55), 15 (Dim. 461). Rocky limestone slopes.
J. oxycedrus L. subsp. *oxycedrus*: 54 (Dim. 271), 16 (Dim. 378). Abies forests, pastures.

Ephedraceae

- Ephedra campylopoda* C. A. Meyer: 40 (Dim. 1585). Torrent banks, rock crevices.

Pinaceae

- . *Abies Borisii-regis* Mattf.: 47 (Dim. 4413). Slopes, ravines.
 ° *A. cephalonica* J. W. Loudon: 49 (Dim. 209). Slopes, ravines.
 * {*Picea abies* (L.) Karsten}: 4 (Dim. 308). On flysch.
Pinus nigra Arnold. subsp. *pallasiana* (Lamb.) Holmboe: 7 (Dim. 307). Slopes, on
 flysch.
 * {*P. radiata* D. Don.}: (Obs.). On flysch.
 * {*Pseudotsuga menziesii* (Mirbel) Franco}: 4 (Dim. 2862). On flysch.

Taxaceae

- Taxus baccata* L.: 42 (Dim. 1606). Abies forests, on limestone.

DICOTYLEDONES

Acanthaceae

- * *Acanthus spinosus* L.: 16 (Dim. 1306, 2385). Roadsides, pastures.

Aceraceae

- Acer campestre* L.: 16 (Dim. 230, 2365), 17 (Dim. 4333). Pastures.
 *. *A. heldreichii* Orph.: 32 (Dim. 4248). Humus rich rocky soils.
A. monspessulanum L.: 16 (Dim. 235), 55 (Dim. 2216), 42 (Dim. 2599). Pastures,
 torrent banks.
A. platanoides L.: 42 (Dim. 2540, 2672). Rocky places in conif. forests.
 * *A. pseudoplatanus* L.: 42 (Dim. 2620, 2661). By torrents.

Anacardiaceae

- * *Cotinus coggygria* Scop.: 11 (Dim. 4370). By torrents.
 * *Pistacia terebinthus* L.: 45 (Dim. 368), 16 (Dim. 1559). Limestone rocks.
Rhus coriaria L.: 16 (Dim. 1547). Rocky limestone slopes, forest openings.

Apiaceae

- * *Anthriscus nemorosa* (Bieb.) Sprengel: 42 (Dim. 2561). Rocky places in conif. forests.

- * *Apium nodiflorum* (L.) Lag.: 31 (Dim. 1401), 9 (Dim. 4338), 56 (Dim. 4357). Damp places in torrent beds, streams.
- * *Athamanta macedonica* (L.) Sprengel subsp. *macedonica*: 42 (Dim. 1604, 1894, 2601). Rocky places in conif. forests.
- Bupleurum falcatum* L. subsp. *cernum* (Ten.) Arcangeli: 15 (Dim. 89), 32 (Dim. 1866). Quarry & rocky places, pastures.
- . *B. flavicans* Boiss. & Heldr.: 29 (Dim. 201), 27 (Dim. 1228). Pastures.
- . *B. glumaceum* Sm.: 16 (Dim. 76), 29 (Dim. 1736). Pastures.
- * *B. praealtum* L.: 1 (Dim. 4691). Macchie.
- * *Cachrys ferulacea* (L.) Calestani: 16 (Dim. 798, 1329, 4617). Limestone rocks.
- . *Carum graecum* Boiss. & Heldr. subsp. *graecum*: 15 (Dim. 1077), 31 (Dim. 2445, 2450). Pastures, rocky slopes.
- ° *C. heldreichii* Boiss.: 30 (Dim. 4550, 4638). Rocky slopes.
- C. multiflorum* (Sm.) Boiss.: 29 (Dim. 1748). Limestone rocks, pastures.
- . *C. rupestre* Boiss. & Heldr.: 31 (Dim. 1434, 2451). Rocky & stony pastures.
- Chaerophyllum aromaticum* L.: 15 (Dim. 1671, 4679), 24 (Dim. 4230). Screes, damp places.
- * *Daucus carota* L.: 6 (Dim. 1811), 11 (Dim. 4369). Roadsides.
- Eryngium amethystinum* L.: 28 (Dim. 59), 29 (Dim. 185, 1763), 18 (Dim. 4385). Pastures.
- * *E. campestre* L.: 18 (Dim. 4382). Pastures.
- * *Ferulago nodosa* (L.) Boiss.: 42 (Dim. 1491). Forest openings.
- * *F. sylvatica* (Besser) Reichenb.: 42 (Dim. 2674). Forest openings.
- Geocaryum capillifolium* (Guss.) Cosson: 15 (Dim. 694), 7 (Dim. 897), 31 (Dim. 2186). Pinus forests, pastures.
- . *G. pindicolum* (Hauskn.) Engstrand: 27 (Dim. 1233), 30 (Dim. 2513). Stony slopes, screes, pastures on limestone.
- Heracleum sphondylium* L. subsp. *pyrenaicum* (Lam.) Bonnier & Layens: 8 (Dim. 36), 15 (Dim. 1668). Quarry & damp places.
- Laserpitium siler* L. subsp. *garganicum* (Ten.) Arcangeli: 15 (Dim. 1658), 25 (Dim. 2986). Quarry places, rocky pastures.
- Ligusticum lucidum* Miller: (Strid 1986: 705).
- * *Malabaila aurea* (Sm.) Boiss.: 51 (Dim. 175). Macchie.
- * *M. involucrata* Boiss. & Spruner: 16 (Dim. 799), 7 (Dim. 898). Forest openings, Pinus forests, macchie.
- * *Oenanthe pimpinelloides* L.: 7 (Dim. 913). Openings in Pinus forests.
- Opopanax chironium* (L.) Koch.: 16 (Dim. 1321, 2860, 4618). Rocky places.
- * *O. hispidus* (Friv.) Griseb.: 3 (Dim. 4717). Roadsides.
- Orlaya daucoides* (L.) Greuter: 16 (Dim. 809), 9 (Dim. 846), 28 (Dim. 1108), 50 (Dim. 2394). Rocky places, pastures.
- O. daucorlaya* Murb.: 49 (Dim. 164), 50 (Dim. 952), 27 (Dim. 1248). Rocky places, pastures.
- Peucedanum longifolium* Waldst. & Kit.: 15 (Dim. 1669), 31 (Dim. 1972). Limestone rocks.
- P. obtusifolium* Sm.: (Gan. 1940: 31). As the taxon hasn't been ascertained either by us or by any other researcher up to now and as it grows mainly on sandy beaches we consider its existence doubtful in the study area.
- . *P. oligophyllum* (Griseb.) Vandas: 9 (Dim. 4672). Pastures.
- Pimpinella peregrina* L.: 16 (Dim. 77), 32 (Dim. 1869). Pastures.

- P. tragium* Vill. subsp. *tragium*: 31 (Dim. 68). Rocky places in pastures.
P. tragium Vill. subsp. *polyclada* (Boiss. & Heldr.) Tutin: 42 (Dim. 1913, 2567). Quarry places, pastures on limestone.
 * *Sanicula europaea* L.: 54 (Dim. 269), 6 (Dim. 299), 9 (Dim. 850), 7 (Dim. 894). Wet places, openings in Pinus forests.
 * *Scandix australis* L. subsp. *grandiflora* (L.) Thell.: 31 (Dim. 1355), 50 (Dim. 2393). Rocky & gregious places, pastures.
S. macrorhyncha C. A. Meyer: 15 (Dim. 681, 1037), 25 (Dim. 3010). Rocky places, pastures.
Selinum silaifolium (Jacq.) G. Beck: 31 (Dim. 1852), 27 (Dim. 2883). Forest openings, rocky & stony places, pastures.
 ° *Seseli parnassicum* Boiss. & Heldr.: 31 (Dim. 1971). Limestone rocks.
S. peucedanoides (Bieb.) Kos.-Pol.: (Strid 1986: 682).
 * *Smyrniium perfoliatum* L. subsp. *perfoliatum*: 20 (Dim. 4703). Torrents watershed.
S. perfoliatum L. subsp. *rotundifolium* (Miller) Hartvig: (Skrubis & Pinatsis 1987: 24).
 * *Tordylium apulum* L.: 16 (Dim. 804, 2374). Pastures.
 * *T. officinale* L.: 28 (Dim. 4045). Pastures.
 * *Torilis arvensis* (Hudson) Link: 16 (Dim. 812), 31 (Dim. 1354), 42 (Dim. 2586). Openings in Abies forests.
 * *T. japonica* (Houtt.) DC.: 16 (Dim. 1929). Sparse Abies forests.
 ° *Trinia frigida* (Boiss. & Heldr.) Drude: 15 (Dim. 1081), 27 (Dim. 4030), 31 (Dim. 2448). Screes places, rocky pastures on limestone.

Apocynaceae

- * *Vinca minor* L.: 52 (Dim. 422), 16 (Dim. 2105), 51 (Dim. 2145). Roadsides, macchie, pastures, Pinus stands.

Aquifoliaceae

- Ilex aquifolium* L.: 7 (Dim. 2287). Abies forests.

Araliaceae

- Hedera helix* L.: 49 (Dim. 214), 10 (Dim. 652), 24 (Dim. 4285). Ravines.

Aristolochiaceae

- ° *Aristolochia elongata* (Duchartre) Nardi: 49 (Dim. 463), 16 (Dim. 590), 7 (Dim. 895). Shady woody places, scrubs, on limestone.
A. rotunda L.: (Nardi 1991: 59).

Asclepiadaceae

- Vincetoxicum funebre* Boiss. & Kotschy: (Strid & Tan 1991: 12).
V. hirundinaria Medicus subsp. *nivale* (Boiss. & Heldr.) Markgraf: 28 (Dim. 8, 1099), 27 (Dim. 2688, 4016). Limestone screes, ravines.
Vincetoxicum speciosum Boiss. & Spruner: 4 (Dim. 900, 1460, 4048). Pastures, scrubs.

Asteraceae

- Achillea clypeolata* Sm.: 16 (Dim. 2845, 2867), 25 (Dim. 4171). Rocky pastures on limestone.
A. fraasii Schultz Bip.: 27 (Dim. 2506), 42 (Dim. 2558), 16 (Dim. 2865), 30 (Dim. 4122), 25 (Dim. 4172). Limestone rocks.
A. grandifolia Friv.: 42 (Dim. 1918, 2560), 25 (Dim. 2611, 4311). Abies forests.
A. holosericea Sm.: 31 (Dim. 959), 29 (Dim. 1735), 42 (Dim. 2681), 16 (Dim. 4829). Rocky places, forest openings.
A. ligustica All.: 6 (Dim. 108), 16 (Dim. 1552), 9 (Dim. 2799), 25 (Dim. 4314). Abies forests, pastures.
A. nobilis L.: 16 (Dim. 2836). Pastures.

- ° *A. pindicola* Hausskn. subsp. *pindicola*: 15 (Dim. 1686), 31 (Dim. 2444), 25 (Dim. 2995, 3016). Crevices & ledges of limestone rocks.
- A. setacea* Waldst. & Kit.: 6 (Dim. 107), 27 (Dim. 1699), 29 (Dim. 1770), 25 (Dim. 4179, 3004). Pastures.
- . *Anthemis arvensis* L. subsp. *cyllenea* (Halácsy) R. Fernandes: 7 (Dim. 925), 15 (Dim. 1956). Roadsides, pastures.
- * *A. chia* L.: 47 (Dim. 508), 29 (Dim. 2780). Pastures, roadsides.
- A. cotula* L.: (Gan. 1940: 33).
- A. cretica* L. subsp. *columnae* (Ten.) Franzén: 42 (Dim. 1883), 15 (Dim. 2342), 31 (Dim. 2443). Rocky places, pastures.
- ° *A. spruneri* Boiss. & Heldr.: (Gan. 1940: 33).
- A. tinctoria* L. subsp. *parnassica* (Boiss. & Heldr.) Franzén: 6 (Dim. 1784), 42 (Dim. 1884). Rocky places, margins of *Abies* forests.
- Arctium lappa* L.: 55 (Dim. 331), 19 (Dim. 4076). Damp places.
- Artemisia vulgaris* L.: 14 (Dim. 4380). Roadsides.
- Bellis perennis* L.: 15 (Dim. 684), 30 (Dim. 2172), 9 (Dim. 2350), 42 (Dim. 2563). Damp pastures, scrubs.
- Carduus acanthoides* L.: (Gan. 1940: 33).
- C. candicans* Waldst. & Kit.: 28 (Dim. 4205). Pastures.
- * *C. nutans* L.: 42 (Dim. 1907), 28 (Dim. 4206). Rocky places, pastures.
- C. tmoleus* Boiss.: 7 (Dim. 322), 29 (Dim. 1745), 16 (Dim. 1935), 25 (Dim. 4197). Pastures, rocky slopes, lagerflur places.
- Carlina corymbosa* L. subsp. *graeca* (Boiss.) Nyman: (Gan. 1940: 34).
- . *C. frigida* Boiss. & Heldr.: 9 (Dim. 62). Pastures.
- Carthamus lanatus* L.: 8 (Dim. 4731). Juniperus scrubs on alluvial soils.
- Centaurea affinis* Friv. subsp. *affinis*: 31 (Dim. 1984), 27 (Dim. 1713, 2765), 9 (Dim. 2791), 25 (Dim. 4183), 28 (Dim. 4201). Pastures.
- ° *C. affinis* Friv. subsp. *pallidior* (Halácsy) Hayek: 3 (Dim. 4326), 18 (Dim. 4387), 15 (Dim. 4653). Pastures, damp & rocky places.
- * *C. calcitrapa* L.: 51 (Dim. 4320). Roadsides.
- * *C. cyanus* L.: 38 (Dim. 1509), 42 (Dim. 1892 b). Roadsides, openings in *Abies* forests.
- C. depressa* Bieb.: (Gan. 1940: 33).
- . *C. graeca* Griseb.: 16 (Dim. 1311, 1565, 2859, 4332). Limestone rocky places.
- * *C. jacea* L. 45 (Dim. 352, 4656). Stream beds, abandoned fields.
- C. pichleri* Boiss.: 29 (Dim. 2066), 27 (Dim. 2711, 4027), 25 (Dim. 4127). Pastures on limestone.
- ° *C. princeps* Boiss. & Heldr.: 15 (Dim. 1655, 4828), 16 (Dim. 1317, 4828). Crevices of limestone rocks, quarry places, rocky pastures.
- * *C. salonitana* Vis.: 10 (Dim. 4720). Roadsides.
- * *C. solstitialis* L. subsp. *solstitialis*: 10 (Dim. 4057), 8 (Dim. 4304). Roadsides, openings in evergreen scrubs.
- . *C. spruneri* Boiss. & Heldr.: 29 (Dim. 4208), 16 (Dim. Obs.). Roadsides, abandoned fields.
- C. triumphatii* All.: 28 (Dim. 1173), 30 (Dim. 2171), 31 (Dim. 2429, 2454), 27 (Dim. 4002), 47 (Dim. 4517). Pastures, stony places.
- . *C. zuccariniana* DC.: 40 (Dim. 1592). Pastures.
- * *Chamomilla recutita* (L.) Rauschert: 10 (Dim. 2235). Roadsides.
- * *Chondrilla juncea* L.: 51 (Dim. 327), 31 (Dim. 2520), 16 (Dim. 2787, 2837). Roadsides.

- * *Cichorium intybus* L.: 38 (Dim. 1510). Roadsides.
- * *Cirsium arvense* (L.) Scop.: 6 (Dim. 1807), 19 (Dim. 4082). Roadsides.
- C. candelabrum* Griseb.: 7 (Dim. 319), 29 (Dim. 341), 24 (Dim. 4270). Roadsides.
- * *C. creticum* (Lam.) D'Urv.: 49 (Dim. 203), 31 (Dim. 1978). Torrent beds.
- ° *C. heldreichii* Halácsy: 28 (Dim. 130), 7 (Dim. 321), 9 (Dim. 4348). Rocky places, roadsides.
- *° *C. mairei* Halácsy: 23 (Dim. 4234). Damp places in torrents.
- Cnicus benedictus* L.: (Gan. 1940: 34).
- Crepis aurea* (L.) Cass.: 27 (Dim. 2897). Stony pastures.
- * *C. dioscoridis* L.: 31 (Dim. 1483), 16 (Dim. 2840), 29 (Dim. 4092). Openings in Abies forests, rocky places in pastures.
- * *C. fraasii* Schultz Bip.: 16 (Dim. 615), 42 (Dim. 2592, 2615). Abies forests.
- * *C. neglecta* L. subsp. *neglecta*: 16 (Dim. 1316, 2833). Openings in Abies forests.
- C. rubra* L.: 47 (Dim. 4407, 4457). Pastures.
- C. sancta* (L.) Bornm.: 15 (Dim. 1039), 39 (Dim. 1505), 42 (Dim. 2649), 27 (Dim. 2706). Pastures, openings in Abies forests.
- * *C. setosa* Haller fil.: 16 (Dim. 2834). Rocky places.
- * *C. viscidula* Froelich subsp. *geracioides* (Hausskn.) Kamari: 42 (Dim. 2565), 25 (Dim. 4166), 15 (Dim. 4674). Humus rich rocky soils.
- * *Crupina crupinastrum* (Moris) Vis.: 50 (Dim. 2398), 18 (Dim. 2881), 25 (Dim. 2991). Rocky places, pastures, wet places in torrents.
- C. vulgaris* Gass.: (Gan. 1940: 33).
- * *Dittrichia viscosa* (L.) W. Greuter: 13 (Dim. 2005). Abandoned fields, roadsides.
- Doronicum columnae* Ten.: 15 (Dim. 96), 27 (Dim. 1269), 30 (Dim. 4557). Crevices of limestone rocks, shady places, rocky pastures.
- D. orientale* Hoffm.: 12 (Dim. 558), 9 (Dim. 668, 719), 29 (Dim. 2055), 16 (Dim. 2130). Forests with Abies, Castanea or Quercus.
- Echinops microcephalus* Sm.: (Gan. 1940: 33).
- E. ritro* L.: 28 (Dim. 2, 27), 29 (Dim. 60, 1743), 18 (Dim. 4384). Pastures.
- Erigeron alpinus* L.: 25 (Dim. 2997, 3030, 3050), 15 (Dim. 4676), 27 (Dim. 4023), 31 (Dim. 4627). Rocky & stony pastures.
- E. glabratus* Hoppe & Hornsch.: 25 (Dim. 2983, 3008). Rocky pastures.
- * *Eupatorium cannabinum* L.: 9 (Dim. 65). Moist places along roadsides.
- * *Filago pyramidata* L.: 8 (Dim. 4611). Scrubs with Juniperus oxycedrus.
- * *F. vulgaris* Lam.: 16 (Dim. 1553), 9 (Dim. 2804). Pastures.
- Gnaphalium sylvaticum* L.: (Strid & Tan 1991: 410).
- Helichrysum plicatum* DC. subsp. *plicatum*.: 27 (Dim. 1712), 30 (Dim. 4123). Sparse Abies forests, pastures.
- * *Hieracium bauhini* Schultes: 28 (Dim. 1113), 16 (Dim. 1327). Pastures.
- . *H. bracteolatum* Sm.: (Halácsy 1902: 244).
- H. cymosum* L. subsp. *cymosum*: 31 (Dim. 951), 6 (Dim. 2226), 16 (Dim. 2793), 27 (Dim. 4038). Openings in conif. forests, pastures.
- . *H. cymosum* L. subsp. *heldreichianum* Naegeli & Peter: 15 (Dim. 2307), 27 (Dim. 3053). Rocky pastures, scrubs.
- H. cymosum* L. subsp. *sabinum* (Sebastiani) Naegeli & Peter: (Strid & Tan 1991: 614).
- *° *H. epirense* (Zahn) Buttler: 25 (Dim. 2482, 3038), 42 (Dim. 2616), 27 (Dim. 4188). Pastures, rocky slopes, Abies forests.
- H. hoppeanum* Schultes subsp. *pilisquamum* Naegeli & Peter: 15 (Dim. 1042), 48 (Dim. 1353). Pastures.

- ° *H. leithneri* (Heldr. & Sart. ex Boiss.) Zahn: 25 (Dim. 2460, 2471), 27 (Dim. 4194).
Rock crevices, screes, stony pastures.
- H. naegelianum* Pancic: 30 (Dim. 1828), 27 (Dim. 2741), 25 (Dim. 2978, 4187). Rocky places, pastures.
- H. pannosum* Boiss.: 16 (Dim. 81), 15 (Dim. 1648), 42 (Dim. 1916), 27 (Dim. 2710), 28 (Dim. 4204). Limestone rocks in pastures.
- . *H. parnassi* Fries: 25 (Dim. 2482), 42 (Dim. 2616), 30 (Dim. 4103). Rocky places in Abies forests, rock crevices, stony pastures.
- H. racemosum* Waldst. & Kit.: (Gan. 1940: 34).
- * *Hypochoeris achyrophorus* L.: 11 (Dim. 650). Roadsides.
- H. cretensis* (L.) Bory & Chaub.: 16 (Dim. 784, 2366), 28 (Dim. 1176), 6 (Dim. 1464), 9 (Dim. 2800). Pastures.
- Inula conyza* DC.: 16 (Dim. 2835), 9 (Dim. 4351). Quarry places, roadsides.
- I. oculus-christi* L.: 6 (Dim. 1461), 15 (Dim. 1649), 30 (Dim. 4099). Pastures.
- ° *I. verbascifolia* (Willd) Hausskn. subsp. *parnassica* (Boiss. & Heldr.) Tutin: 16 (Dim. 381, 4842). Crevices of limestone rocks.
- * *Jurinea mollis* (L.) Reichenb.: 16 (Dim. 51), 31 (Dim. 1486), 42 (Dim. 1618, 1905), 25 (Dim. 2968). Rocky places.
- Lactuca intricata* Boiss.: 27 (Dim. 2684, 2698). Gravelly & rocky places.
- L. saligna* L.: 24 (Dim. 4247). Pastures.
- L. serriola* L.: 19 (Dim. 4077), 9 (Dim. 4350). Roadsides, Pastures.
- L. viminea* (L.) J. & C. Presl: 9 (Dim. 1631, 2081), 42 (Dim. 2630), 27 (Dim. 2758), 17 (Dim. 2821). Roadsides, rocky places, pastures.
- L. visianii* Bornm.: 30 (Dim. 4155). Rocky pastures.
- * *Lapsana communis* L.: 9 (Dim. 852), 48 (Dim. 1346), 24 (Dim. 4244). Abies forests.
- Leontodon cichoriaceus* (Ten.) Sanguinetti: 9 (Dim. 720), 16 (Dim. 823), 12 (Dim. 2265). Pastures, deciduous forests.
- L. crispus* Vill. subsp. *asper* (Waldst. & Kit.) Rohlena: 16 (Dim. 53), 42 (Dim. 2580), 15 (Dim. 2811). Pastures, rocky places.
- ° *L. graecus* Boiss. & Heldr.: (Gan. 1940: 33).
- L. hispidus* L. subsp. *hispidus*: 27 (Dim. 4193), 24 (Dim. 4221, 4280), 15 (Dim. 4684, 4685). Rocky & damp places, pastures.
- L. tuberosus* L.: 10 (Dim. 559). Roadsides.
- * *Logfia cf. arvensis* (L.) J. Holub: 49 (Dim. 207), 16 (Dim. 2377), 6 (Dim. 1801), 30 (Dim. 4098). Pastures, rocky places, roadsides.
- ° *Marticaria rosella* (Boiss. & Orph.) Nyman: (Gan. 1940: 33).
- Mycelis muralis* (L.) Dumort.: 48 (Dim. 1347), 6 (Dim. 1462), 43 (Dim. 1495). Abies forests.
- * *Onopordum illyricum* L.: 29 (Dim. 1839). Pastures.
- * *Picnomon acarna* (L.) Cass.: 16 (Dim. 273), 55 (Dim. 330). Pastures, roadsides.
- Picris echioides* L.: 8 (Dim. 35), 9 (Dim. 4353). Roadsides.
- * *P. hieracioides* L.: 13 (Dim. 4378). Pastures.
- * *P. pauciflora* Willd.: 16 (Dim. 2841). Rocky slopes.
- Ptilostemon afer* (Jacq.) Greuter: 13 (Dim. 4068). Roadsides, pastures, rocky places.
- P. strictus* (Ten.) W. Greuter: 55 (Dim. 866). Abandoned fields & scrubs.
- * *Pulicaria dysenterica* (L.) Bernh.: 16 (Dim. 79, 4330), 31 (Dim. 1965), 14 (Dim. 4075).
Wet places, Castanea forests.
- * *Rhagadiolus stellatus* (L.) Gaertner: 55 (Dim. 4709). Evergreen scrubs.
- * *Scolymus hispanicus* L.: 28 (Dim. 183). Roadsides, pastures.

- Scorzonera cana* (C. A. Meyer) O. Hoffm: 15 (Dim. 90), 31 (Dim. 1437), 27 (Dim. 2779). Pastures, rocky slopes.
- * *S. doriae* Degen & Bald.: 45 (Dim. 4658), 44 (Dim. 4661). Ravines.
- S. lačiniata* L.: (Gan. 1940: 33).
- S. mollis* Bieb. subsp. *mollis*: 15 (Dim. 93, 1651), 16 (Dim. 1469), 30 (Dim. 2167), 25 (Dim. 4180). Rocky slopes, screes, pastures.
- ° *S. purpurea* L. subsp. *peristerica* Form.: (Gan. 1940: 33).
- Senecio hercynicus* Herborg: 42 (Dim. 2654), 24 (Dim. 4223). Rocky places.
- S. macedonicus* Griseb.: 27 (Dim. 1696), 30 (Dim. 4115, 4135). Roadsides, pastures.
- S. squalidus* L.: 15 (Dim. 1675), 29 (Dim. 1750), 42 (Dim. 1899), 30 (Dim. 2512). Quarry places, rocky slopes, screes, pastures.
- * *S. subalpinus* Koch: 24 (Dim. 4297). Pools in pastures.
- . *S. thapsoides* DC.: (Skrubis & Pinatsis 1987:17).
- S. vernalis* Waldst. & Kit.: 48 (Dim. 638), 16 (Dim. 2102), 31 (Dim. 2193). Pastures.
- S. viscosus* L.: 31 (Dim. 1981), 16 (Dim. 2822), 27 (Dim. 4012). Quarry & gravelly places.
- Solidago virgaurea* L.: 42 (Dim. 1617, 1911), 15 (Dim. 1950), 25 (Dim. 2485, 4174). Forest margins, ravines, rocky places.
- * *Sonchus asper* (L.) Hill.: 30 (Dim. 1838), 42 (Dim. 2593), 16 (Dim. 2823, 2839), 6 (Dim. 2869). Roadsides, pastures, rocky places.
- . *Stachelina uniflosculosa* Sm.: 27 (Dim. 25), 25 (Dim. 3066). Rock crevices.
- * *Steptorhamphus tuberosus* (Jacq.) Grossh.: 1 (Dim. 4715). Quercus forests.
- * *Tanacetum corymbosum* (L.) Schultz Bip.: 27 (Dim. 1703, 2885), 25 (Dim. 2960, 4312). Pastures.
- T. parthenium* (L.) Schultz Bip.: 44 (Dim. 361), 6 (Dim. 1817), 7 (Dim. 4046), 14 (Dim. 4069). Roadsides, by rivers.
- Taraxacum aleppicum* Dahlst.: 28 (Dim. 441, 2083), 16 (Dim. 449). Rocky places.
- * *T. calocephalum* Hand.-Mazz.: 27 (Dim. 1239), 25 (Dim. 2489), 32 (Dim. 4745). Pastures, rocky places.
- ° *T. copidophylloides* A. J. Richards: (Strid & Tan 1991: 565).
- * *T. delphicum* Dahlst.: 7 (Dim. 402), 10 (Dim. 420). Pastures.
- T. epirense* Van Soest: (Strid & Tan 1991: 553).
- ° *T. fibratum* Sonck: (Strid & Tan 1991: 560).
- ° *T. fragosum* Sonck: (Strid & Tan 1991: 563).
- ° *T. gionense* A. J. Richards: 31 (Dim. 2183), 32 (Dim. 4746). Rocky pastures.
- . *T. gracilens* Dahlst. (Strid & Tan 1991: 557).
- * *T. minimum* (Briganti ex Guss.) Terracc.: 28 (Dim. 468). Pastures.
- ° *T. molybdocephalum* Sonck: 30 (Dim. 2509). Rocky pastures on limestone.
- . *T. pindicola* (Bald.) Hand.-Mazz.: 30 (Dim. 735), 15 (Dim. 2017). Pastures, rocky places, on limestone.
- ° *T. protervum* Sonck (Strid & Tan 1991: 562).
- T. scaturiginosum* G. Hagl. apud Samuelsson: (Strid & Tan 1991: 550).
- * *Tephrosia integrifolia* (L.) Holub subsp. *integrifolia*: 15 (Dim. 2343), 42 (Dim. 2549), 3 (Dim. 4329). Pastures, Abies forests, rocky places.
- Tragopogon crocifolius* L. subsp. *samaritani* (Heldr. & Sart. ex Boiss.) I. B. K. Richardson: 9 (Dim. 851), 15 (Dim. 1058), 16 (Dim. 2381). Abies forests, rocky places, pastures.
- Tussilago farfara* L.: 28 (Dim. 19), 6 (Dim. 304), 7 (Dim. 410). Roadsides, damp places, torrent beds.

- Xanthium spinosum* L.: 29 (Dim. 340), 28 (Dim. 2816). Roadsides.
X. strumarium L.: 8 (Dim. 743). Roadsides, abandoned fields.
 * *Xeranthemum annuum* L.: 1 (Dim. 1537). Abandoned fields.
 * *X. cylindraceum* Sm.: 7 (Dim. 1625). Roadsides.
 * *X. inapertum* (L.) Miller: 28 (Dim. 1088), 43 (Dim. 1489), 29 (Dim. 1762), 27 (Dim. 3067). Pastures, rocky places.

Betulaceae

- * *Alnus glutinosa* (L.) Gaertner.: 3 (Dim. 294). Rivulets & stream banks.

Boraginaceae

- ° *Alkanna graeca* Boiss. & Spruner: 12 (Dim. 542), 3 (Dim. 4328). Roadsides, margins of Abies forests.
 * *A. pindicola* Hausskn.: 40 (Dim. 1589). Torrent banks in pastures.
Anchusa hybrida Ten.: (Strid & Tan 1991: 45).
A. officinalis L.: 6 (Dim. 908), 31 (Dim. 977), 24 (Dim. 4283). Pinus forests, rocky pastures, torrent beds.
 * *Asperugo procumbens* L.: 31 (Dim. 1446). Lagerflur in pastures.
 * *Cerithe minor* L.: 42 (Dim. 1623), 15 (Dim. 1678). Rocky places.
Cynoglossum columnae Ten.: (Gan. 1940: 31).
 * *C. officinale* L.: 10 (Dim. 543), 28 (Dim. 1111), 47 (Dim. 4423). Roadsides, pastures.
 * *Echium italicum* L.: 49 (Dim. 170), 7 (Dim. 886). Pastures, Pinus forests, roadsides.
 *° *Heliotropium halácsy* Riedl: 44 (Dim. 358). River beds.
 * *H. hirsutissimum* Grauer 44 (Dim. 359). River beds.
Lithospermum incrassatum Guss.: 27 (Dim. 1262), 30 (Dim. 4121, 4556). Lagerflur in pastures, damp places, rocky hillsides.
 * *L. purpureocaeruleum* L.: 54 (Dim. 244), 8 (Dim. 4396). Roadsides, forest margins.
Myosotis alpestris F. W. Schmidt subsp. *suaveolens* (Waldst. & Kit. ex Willd.) Strid: 28 (Dim. 1188), 27 (Dim. 1241). Pastures, sparse Abies forests, on limestone.
 * *M. incrassata* Guss.: 10 (Dim. 497), 47 (Dim. 4505). Rocky pastures, Platanus stands.
M. nemorosa Besser: 24 (Dim. 4296). Damp places in pastures.
M. refracta Boiss. subsp. *refracta*: 42 (Dim. 2573), 27 (Dim. 2766). Rocky pastures.
M. stricta Roemer & Schultes: 49 (Dim. 4439). Rocky pastures.
M. sylvatica Hoffm. subsp. *cyanea* (Hayek) Vestergren: 9 (Dim. 855), 7 (Dim. 884), 27 (Dim. 2759). Scrubs & pastures.
 * *Onosma heterophyllum* Griseb.: 42 (Dim. 1891), 50 (Dim. 1967). Rocky places, openings in Abies forests, pastures.
Symphytum bulbosum C. Schimper: 47 (Dim. 512), 16 (Dim. 601), 48 (Dim. 2164). Abies forests.
- #### **Campanulaceae**
- Asyneuma canescens* (Waldst. & Kit.) Griseb. & Schenk: 31 (Dim. 1848). Rocky pastures on limestone.
A. limonifolium (L.) Janchen: 28 (Dim. 1092), 42 (Dim. 2656). Rocky pastures, rocky ledges.
 ° *Campanula albanica* Witasek subsp. *sancta* (Hayek) Podlech: 27 (Dim. 1714), 42 (Dim. 1881). Rock crevices, rocky pastures.
C. glomerata L.: 42 (Dim. 1611), 25 (Dim. 4165), 24 (Dim. 4289). Rocky pastures on limestone.
C. persicifolia L.: (Gan. 1940: 33).
 ° *C. radicata* Bory & Chaub.: 27 (Dim. 2761, 4039). Pastures on limestone.
 * *C. ramosissima* Sm.: 16 (Dim. 808), 37 (Dim. 1522), 55 (Dim. 2215). Roadsides,

rocky places, pastures.

C. rapunculus L.: (Gan. 1940: 33).

* *C. sparsa* Friv.: 5 (Dim. 4747), 20 (Dim. 4748). Castanea forests, roadsides within Abies forests.

. *C. spatulata* Sm. subsp. *spatulata*: 42 (Dim. 1922), 19 (Dim. 2282), 31 (Dim. 2422). Pastures, Abies forests.

. *C. spatulata* Sm. subsp. *spruneriana* (Hampe) Hayek: 13 (Dim. 547), 28 (Dim. 1097), 31 (Dim. 2423). Pastures, forest openings.

C. trachelium L.: 10 (Dim. 4055), 30 (Dim. 4164). Pastures, margins of Abies forests.

C. versicolor Andrews: 30 (Dim. 1820), 25 (Dim. 2961). Limestone rocks.

° *Edraianthus parnassicus* (Boiss. & Spruner) Halácsy: 31 (Dim. 1451), 27 (Dim. 2761). Pastures.

* *Legousia speculum-veneris* (L.) Chaix: 15 (Dim. 1028), 31 (Dim. 2432). Pastures, rocky slopes.

Cannabaceae

Humulus lupulus L.: 56 (Dim. 211). Field hedges.

Caprifoliaceae

Lonicera etrusca G. Santi: 16 (Dim. 1312), 42 (Dim. 2636). Roadsides, torrent banks.

* *L. formanekiana* Halácsy: 25 (Dim. 4151). Rocky semi-shade places.

* *L. nummulariifolia* Jaub. & Spach subsp. *nummulariifolia*: 24 (Dim. 4209). By streams.

Sambucus ebulus L.: 16 (Dim. 1933), 9 (Dim. 2872). Roadsides, quarry places.

S. nigra L.: 9 (Dim. 2873). Roadsides, screes.

Caryophyllaceae

* *Arenaria filicaulis* Fenzl subsp. *graeca* (Boiss.) McNeill: 42 (Dim. 1897, 2546, 2641). Rocky places in Abies forests.

*° *A. guicciardii* Boiss.: 8 (Dim. 4706). Scrubs with *Juniperus oxycedrus*.

A. serpyllifolia L.: 9 (Dim. 2870), 47 (Dim. 4498), 24 (Dim. 4548). Pastures, roadsides.

Bufonia paniculata F. Dubois: 1 (Dim. 4695). Macchie.

Cerastium banaticum (Rochel) Heuffel subsp. *speciosum* (Boiss.) Jalas: 50 (Dim. 192), 31 (Dim. 967, 2427). Rocky places, pastures, screes.

C. brachypetalum Pers. subsp. *roeseri* (Boiss. & Heldr.) Nyman: 28 (Dim. 1110), 15 (Dim. 2302). Rocky places, forest clearings.

° *C. candidissimum* Corr.: 29 (Dim. 115), 31 (Dim. 2424). Rocky places in forest clearings & pastures.

. *C. decalvans* Schlosser & Vuk.: (Polunin 1980: 103).

* *C. glomeratum* Thuill.: 13 (Dim. 4707). Pastures.

° *C. pindigenum* Lonsing: 10 (Dim. 562), 9 (Dim. 847). Torrent banks, rocky places.

° *Dianthus biflorus* Sm.: 15 (Dim. 1639), 27 (Dim. 1702), 42 (Dim. 1877). Rocky places, pastures, on limestone.

° *D. corymbosus* Sm.: (Polunin 1980: 104).

D. cruentus Griseb.: 54 (Dim. 4568). Roadsides within macchie.

. *D. gracilis* Sm. subsp. *gracilis*: (Gan. 1940: 28).

. *D. petraeus* Waldst. & Kit. subsp. *minutiflorus* (Halácsy) Greuter & Burdet: 15 (Dim. 1639), 27 (Dim. 4004), 30 (Dim. 4108). Sparse Abies forests, rocky places, pastures.

. *D. pinifolius* Sm. subsp. *lilacinus* (Boiss. & Heldr.) Wettst.: (Strid 1986:95).

D. pinifolius Sm. subsp. *serbicus* Wettst.: 29 (Dim. 1753), 27 (Dim. 3057). Rocky

ridges & hillsides.

D. serratifolius Sm.: (Gan. 1940: 28).

- * *D. stenopetalus* Griseb.: 6 (Dim. 902), 15 (Dim. 1030), 9 (Dim. 2346). Pinus forests, openings in conif. forests.
- ° *D. tymphresteus* (Boiss. & Spruner) Boiss.: 15 (Dim. 1032), 27 (Dim. 2751), 31 (Dim. 1421). Pastures on limestone.
- D. viscidus* Bory & Chaub.: 54 (Dim. 268), 6 (Dim. 905), 16 (Dim. 4620). Roadsides, pastures.
- Drypis spinosa* L.: 50 (Dim. 191), 31 (Dim. 937), 24 (Dim. 4281). Calcareous screes in ravines & open slopes.
- Herniaria incana* Lam.: 28 (Dim. 29, 1087), 16 (Dim. 1551). Rocky places, pastures.
- . *H. parnassica* Boiss. subsp. *parnassica*: 30 (Dim. 4131), 47 (Dim. 4521). Pastures, rocky places.
- Holosteum umbellatum* L.: 15 (Dim. 1059, 2014), 47 (Dim. 4518). Gravelly places, pastures.
- . *Minuartia attica* (Boiss. & Spruner) Vierh. subsp. *attica* var. *attica*: 27 (Dim. 2748, 2775), 47 (Dim. 4499). Rocky places, pastures.
- . *M. attica* (Boiss. & Spruner) Vierh. subsp. *attica* var. *ramosissima* (Willd.) Kamari & Constantinidis: 28 (Dim. 1136), 42 (Dim. 2559). Pastures, rocks.
- . *M. baldaccii* (Halácsy) Mattf.: (Gan. 1940: 28).
- ° *M. eurytanica* (Boiss. & Heldr.) Hand.-Mazz. var. *eurytanica*: 7 (Dim. 881), 31 (Dim. 4647). Forest openings, pastures.
- * *M. globulosa* (Labill.) Schinz & Thell.: 8 (Dim. 4738, 4750).
- M. hamata* (Hauskn. & Bornm.) Mattf.: 40 (Dim. 1597), 27 (Dim. 4031), 47 (Dim. 4418). Pastures, rocky places.
- * *M. hybrida* (Vill.) Siskin: 28 (Dim. 4705). Scrubs with *Juniperus oxycedrus*.
- * *M. mediterranea* (Link.) K. Maly subsp. *laxiflora* Kamari: 8 (Dim. 4733). Scrubs with *Juniperus oxycedrus*.
- M. recurva* (All.) Schinz & Thell.: (Strid 1986: 97).
- . *M. stellata* (E. D. Clarke) Maire & Petitmengin var. *stellata*: 9 (Dim. 1000), 25 (Dim. 2954). Rock crevices, rocky places, on limestone.
- ° *M. stellata* (E. D. Clarke) Maire & Petitmengin var. *epirota* (Halácsy) Kamari. Recorded in "Flora Hellenica" (Kamari in press).
- * *Moenchia mantica* (L.) Bartl.: 9 (Dim. 701, 858), 49 (Dim. 4468). Pastures.
- . *Paronychia albanica* Chaudhri: (Strid. 1986: 129).
- *. *P. macedonica* Chaudhri subsp. *macedonica*: 50 (Dim. 988), 31 (Dim. 1450). Rocky places, pastures.
- P. polygonifolia* (Vill.) DC.: (Strid 1986: 127).
- *° *Petrorhagia fasciculata* (Margot & Reuter) P. W. Ball & Heywood: 45 (Dim. 4657). Torrent beds.
- *. *P. illyrica* (Ard.) P. W. Ball & Heywood subsp. *illyrica*: 29 (Dim. 184, 1738), 16 (Dim. 2832). Pastures, rocky places.
- * *Sagina procumbens* L.: 23 (Dim. 4226). Pools in pastures.
- S. saginoides* (L.) Karsten: (Phitos 1960: 1103).
- S. subulata* (Swartz) C. Presl: 24 (Dim. 4268). Pastures.
- Saponaria calabrica* Guss.: 47 (Dim. 510), 31 (Dim. 620), 29 (Dim. 1754). Roadsides, gravelly places, pastures.
- S. officinalis* L.: 8 (Dim. 301). Damp furrow.
- * *Scleranthus annuus* L.: 31 (Dim. 2417), 15 (Dim. 2815). Pastures, roadsides.

- S. perennis* L. subsp. *marginatus* (Guss.) Nyman: 27 (Dim. 1217), 30 (Dim. 2217), 25 (Dim. 2476). Rocky places, pastures.
- * *Silene atropurpurea* (Griseb.) Greuter & Burdet: 6 (Dim. 2220). Abies forests.
- S. bupleuroides* L.: 15 (Dim. 1681). Quarry places.
- . *S. caesia* Sm.: 29 (Dim. & Georg. 114), 50 (Dim. 939), 15 (Dim. 1019). Mobile screes, rocky ledges.
- * *S. conica* L. subsp. *subconica* (Friv.) Gavioli: 28 (Dim. 1186), 47 (Dim. 4481). Pastures.
- S. coronaria* (L.) Clairv.: 6 (Dim. 105), 9 (Dim. 996). Abies forests.
- * *S. cretica* L.: 16 (Dim. 4454). Roadsides.
- . *S. fabarioides* Hausskn.: 43 (Dim. 1499), 48 (Dim. 2158). Screes, roadsides.
- *. *S. graeca* Boiss. & Spruner: 47 (Dim. 4422), 11 (Dim. 4571). Rocky places, roadsides.
- S. italica* (L.) Pers.: 9 (Dim. 853), 31 (Dim. 2431), 42 (Dim. 2598). Conif. forests, pastures.
- * *S. latifolia* Poiret: 16 (Dim. 820), 25 (Dim. 4315), 9 (Dim. 4347). Screes, margins of Abies forests, torrent banks.
- S. multicaulis* Guss. subsp. *multicaulis*: 30 (Dim. & Georg. 147), 15 (Dim. 4677, 4678). Rocky pastures.
- ° *S. multicaulis* Guss. subsp. *sporadum* (Halácsy) Greuter & Burdet: (Strid 1986: 159).
- S. paradoxa* L.: (Gan. 1949: 28).
- S. parnassica* Boiss. & Spruner: 28 (Dim. 24), 25 (Dim. 2951), 16 (Dim. 4836). Rock crevices, rocky pastures, on limestone.
- . *S. radicata* Boiss. & Heldr.: 29 (Dim. & Georg. 112), 30 (Dim. 4119). Roadsides, limestone rocks.
- S. roemeri* Friv.: 15 (Dim. 1046), 25 (Dim. 3012). Rocky pastures.
- S. saxifraga* L.: (Gan. 1940: 28).
- * *S. vulgaris* (Moench) Garcke: 7 (Dim. 998), 25 (Dim. 4156). Ravines.
- *. *S. waldsteinii* Griseb.: 30 (Dim. 4100). Pastures.
- * *Spergularia rubra* (L.) J. Presl & C. Presl: 3 (Dim. 4321). Roadsides.
- * *Stellaria media* (L.) Vill.: 47 (Dim. 514), 42 (Dim. 2612, 2648). Openings in Abies forests.
- * *Telephium imperati* L. subsp. *orientale* (Boiss.) Nyman: 29 (Dim. 4626). Pastures.
- ° *Tunica glumacea* (Bory & Chaub.) P. W. Ball & Heywood: (Gan. 1940: 28).
- T. velutina* (Guss.) P. W. Ball & Heywood: 16 (Dim. 768, 4433), 15 (Dim. 1031). Roadsides, pastures.

Celastraceae

Euonymus europaeus L.: 8 (Dim. 744), 40 (Dim. 1590), 42 (Dim. 2556). Rocky places, torrent banks.

E. latifolius L. Miller: 23 (Dim. 4801). Torrent banks.

Chenopodiaceae

Chenopodium album L.: 19 (Dim. 4079). Roadsides.

C. bonus-henricus L.: 27 (Dim. 1265), 42 (Dim. 1904). Lagerflur in pastures, torrent banks.

C. botrys L.: 29 (Dim. 200, 1988). Roadsides.

Cistaceae

Cistus creticus L.: 6 (Dim. 993), 16 (Dim. 1313), 10 (Dim. 2229). Roadsides, scrubs.

Fumana arabica (L.) Spach: (Gan. 1940: 29).

Helianthemum nummularium (L.) Miller subsp. *nummularium*: 16 (Dim. 761), 29 (Dim. 2028). Pastures, limestone rocks.

Convolvulaceae

Calystegia sepium (L.) R. Br.: (Gan. 1949: 31).

* *C. silvatica* (Kit.) Griseb.: 35 (Dim. 1525), 19 (Dim. 2275). Ravines.

Convolvulus arvensis L.: 28 (Dim. 1129), 13 (Dim. 2271), 31 (Dim. 2522). Pastures, roadsides.

* *C. cantabrica* L.: 29 (Dim. 57). Roadsides.

C. elegantissimus Miller: 29 (Dim. 1190, 2033). Roadsides.

Cuscuta epithymum (L.) L. subsp. *kotschyi* (Des Moulins) Arcangeli: 9 (Dim. 98), 6 (Dim. 1799), 25 (Dim. 2984). Parasitic on various herbs.

Cornaceae

Cornus mas L.: 8 (Dim. 236). Field hedges, roadsides.

* *C. sanguinea* L. subsp. *australis* (C. A. Meyer) Jav.: 54 (Dim. 256, 2197). Abandoned fields.

Corylaceae

Carpinus orientalis Miller: 54 (Dim. 1964). Torrent banks, macchie, mixed forests.

Corylus avellana L.: 1 (Dim. 237), 11 (Dim. 2247), 42 (Dim. 2671). Margins of Abies forests, torrent banks.

* *C. colurna* L.: 32 (Dim. 4753). Screes.

Ostrya carpinifolia Scop.: 16 (Dim. 231). Rocky places in Abies forests.

Crassulaceae

Jovibarba heuffelii (Schott) A. Loeve & D. Loeve: 30 (Dim. 1774). Rocky pastures & ridges, on limestone.

Sedum acre L.: 31 (Dim. 950), 43 (Dim. 1490), 28 (Dim. 1183). Crevices & ledges of limestone rocks.

S. album L.: 16 (Dim. 835), 42 (Dim. 1614, 1878), 27 (Dim. 3064). Limestone rocks, rocky places.

S. amplexicaule DC. subsp. *tenuifolium* (Sm.) Greuter: 6 (Dim. 303), 7 (Dim. 1480). Pastures, openings in Abies forests.

S. anopetalum DC.: 49 (Dim. 165), 30 (Dim. 479), 16 (Dim. 4831). Limestone rocks, roadsides, pastures.

° *S. apoleipon* T Hart: 25 (Dim. 4191), 24 (Dim. 4293). Pastures, rocky places.

* *S. cepaea* L.: 54 (Dim. 267), 1 (Dim. 1538), 40 (Dim. 1586, 1587). Abies forests.

S. dasyphyllum L.: 31 (Dim. 1854), 42 (Dim. 4095). Rocky places, pastures.

S. hispanicum L.: 50 (Dim. 949), 28 (Dim. 1182), 42 (Dim. 4096). Rocky places, pastures.

S. laconicum Boiss. & Heldr.: 16 (Dim. 1333), 25 (Dim. 2944, 2958). Rock crevices, rocky pastures.

S. magellense Ten.: 42 (Dim. 2574, 2597), 30 (Dim. 4111, 4140). Damp screes, rock crevices, pastures.

S. rubens L.: 16 (Dim. 1334), 40 (Dim. 1596). Limestone rocks, pastures.

S. urvillei DC.: 16 (Dim. 380), 15 (Dim. 1687), 42 (Dim. 1879). Limestone rocks, rocky pastures.

Sempervivum marmoreum Griseb.: 30 (Dim. 1775, 1843). Stony pastures.

* *Umbilicus erectus* DC.: 52 (Dim. 428), 42 (Dim. 2527, 2296). Rocky pastures, shaded rocky places.

U. horizontalis (Guss.) DC.: (Gan. 1940: 29).

Cruciferae

Aethionema saxatile (L.) R. Br. subsp. *oreophilum* I. A. Andersson & al. 16 (Dim. 600), 31 (Dim. 981). Stony pastures, rocky places.

- ° *A. saxatile* (L.) R. Br. subsp. *graecum* (Boiss. & Spruner) Hayek: (Gan. 1940: 29).
- * *Alliaria petiolata* (MB.) Cavara & Grande: 42 (Dim. 1610, 2645), 31 (Dim. 2148).
Abies forests.
- Alyssum alyssoides* (L.) L.: (Gan. 1940: 29).
- A. minutum* DC.: 15 (Dim. 2013), 29 (Dim. 2070), 47 (Dim. 4478). Stony slopes, pastures.
- A. murale* Waldst. & Kit.: 31 (Dim. 1438), 31 (Dim. 2187). Pastures.
- A. repens* Baumg.: 15 (Dim. 691), 31 (Dim. 948), 28 (Dim. 1135). Rocky places, pastures.
- A. siculum* Jordan: 47 (Dim. 517), 31 (Dim. 1455), 27 (Dim. 2735). Rocky places, pastures.
- * *Arabidopsis thaliana* (L.) Heynh.: 26 (Dim. 1206), 16 (Dim. 4456). Abies forests.
- Arabis alpina* L.: 31 (Dim. 622), 28 (Dim. 2077), 25 (Dim. 2495). Pastures, roadsides, scrubs with *Juniperus oxycedrus*.
- A. auriculata* Lam.: 15 (Dim. 1041), 28 (Dim. 1134), 29 (Dim. 2068). Rocky slopes, pastures.
- . *A. bryoides* Boiss.: 27 (Dim. 1263), 42 (Dim. 1895), 25 (Dim. 3051). Crevices of limestone rocks.
- A. collina* Ten.: 28 (Dim. 2080), 47 (Dim. 4425). Rocky places, pastures.
- * *A. sagittata* (Bertol.) DC.: 15 (Dim. 1018), 29 (Dim. 2034, 2052). Openings in Abies forests, evergreen scrubs.
- A. sudetica* Tausch: 27 (Dim. 1257), 24 (Dim. 4558). Rocky pastures.
- A. turrita* L.: 54 (Dim. 250), 9 (Dim. 589). Roadsides, pastures.
- * *A. verna* (L.) R. Br.: 47 (Dim. 4434), 49 (Dim. 4473). Rocky pastures, openings in Abies forests.
- Aubrieta deltoidea* (L.) D C. var. *deltoidea*: 49 (Dim. 464), 31 (Dim. 2411), 24 (Dim. 4263). Gravelly places, rocky pastures, openings in Abies forests.
- ° *A. gracilis* Boiss.: 15 (Dim. 94), 25 (Dim. 2497), 27 (Dim. 2713). Rocky places, stony pastures.
- . *A. scardica* (Wettst.) Gustavsson: 25 (Dim. 3028). Stony pastures on limestone.
- ° *Aurinia gionae* (Quezel & Contandr.) Greuter & Burdet: 25 (Dim. 2456, 4175). Rocky pastures, torrent banks, on limestone.
- A. rupestris* (Heynh.) Cullen & T. R. Dudley subsp. *cyclocarpa* (Boiss.) Cullen & T. R. Dudley: 27 (Dim. 1260). Pastures on limestone.
- * *A. saxatilis* (L.) Desv. subsp. *orientalis* (Ard.) T. R. Dudley: 54 (Dim. 266), 16 (Dim. 610, 1328). Rocky places, openings in Abies forests, roadsides.
- Barbarea sicula* C. Presl: 9 (Dim. 528). Damp pastures.
- Berberoa mutabilis* (Vent.) DC.: 49 (Dim. 210), 54 (Dim. 258), 16 (Dim. 1280, 1927). Pastures, roadsides.
- * *Capsella bursa-pastoris* (L.) Medicus: 16 (Dim. 445, 2792), 8 (Dim. 4400), 30 (Dim. 4566). Pastures.
- * *Cardamine bulbifera* (L.) Crantz: 9 (Dim. 991, 2023). Pastures with *Pteridium aquilinum*.
- * *C. graeca* L.: 12 (Dim. 552), 9 (Dim. 588), 31 (Dim. 1366). Roadsides, Abies forests.
- * *C. hirsuta* L.: 31 (Dim. 1394), 16 (Dim. 4455), 49 (Dim. 4472). Abies forests.
- C. raphanifolia* Pourret subsp. *acris* (Griseb.) O. E. Schulz: 24 (Dim. 4299). Stream beds.
- ° *C. raphanifolia* Pourret subsp. *barbareoides* (Halácsy) Strid: 24 (Dim. 4261). Stream beds.
- * *Cardaria draba* (L.) Desv.: 51 (Dim. 4525). Roadsides.

- Clypeola jonthlaspi* L.: 15 (Dim. 685), 47 (Dim. 4523). Pastures.
- ° *Draba lacaitae* Boiss.: 16 (Dim. 1564), 27 (Dim. 2714, 3089). Crevices of limestone rocks.
- . *D. lasiocarpa* Rochel subsp. *dolichostyla* (O. E. Schulz) Buttler: 28 (Dim. 467), 30 (Dim. 2090). Stony pastures, cliffs, on limestone.
- D. lasiocarpa* Rochel subsp. *lasiocarpa*: 31 (Dim. 2196), 30 (Dim. 4528). Stony pastures.
- * *D. muralis* L.: 47 (Dim. 4433, 4493). Pastures.
- Erophila verna* (L.) Chevall.: 7 (Dim. 390), 15 (Dim. 2015), 30 (Dim. 4563). Openings in *Pinus* forests, pastures.
- ° *Erysimum cephalonicum* Polatschek: 25 (Dim. 2483), 27 (Dim. 2730), 47 (Dim. 4429). *Abies* forests, rocky pastures, ravines.
- * *E. cuspidatum* (MB.) DC.: 31 (Dim. 1443), 18 (Dim. 2192), 49 (Dim. 4461). Pastures.
- *° *E. graecum* Boiss. & Heldr.: 7 (Dim. 903), 31 (Dim. 1382), 17 (Dim. 4438). *Pinus* forests, roadsides, pastures.
- ° *E. pusillum* Bory & Chaub.: (Polunin 1980: 104).
- Fibigia clypeata* (L.) Medicus: 54 (Dim. 270), 29 (Dim. 1201), 42 (Dim. 1889). Roadsides, evergreen scrubs.
- * *Hesperis laciniata* All. subsp. *laciniata*: 28 (Dim. 1168), 42 (Dim. 1876), 30 (Dim. 4126). Pastures, scrubs.
- Hornungia petraea* (L.) Reichenb.: 29 (Dim. 2062), 28 (Dim. 2086). Pastures, sparse *Abies* stands.
- Iberis carnosus* Willd.: (Strid 1986: 333).
- I. sempervirens* L.: 31 (Dim. 1444), 25 (Dim. 2499, 2974), 27 (Dim. 2504). Rock crevices, stony pastures.
- Lepidium hirtum* (L.) Sm. subsp. *nebrodense* (Rafin.) Thell.: 47 (Dim. 519, 4491), 9 (Dim. 857). Rocky slopes, pastures, roadsides.
- . *Malcolmia graeca* Boiss. & Spruner subsp. *bicolor* (Boiss. & Heldr.) A. Stork: 15 (Dim. 1069), 28 (Dim. 1131). Pastures, rocky places.
- . *M. orsiniana* (Ten.) Ten. subsp. *angulifolia* (Boiss. & Orph.) A. Stork.: 50 (Dim. 958), 31 (Dim. 2176). Stony pastures, rocky places.
- * *Neslia apiculata* Fisher & al.: 8 (Dim. 4445). Roadsides.
- Rorippa pyrenaica* (L.) Reichenb.: (Strid 1986: 255).
- * *R. sylvestris* (L.) Besser subsp. *sylvestris*: 56 (Dim. 4356), 46 (Dim. 4662). River banks.
- * *Sisymbrium officinale* (L.) Scop.: 16 (Dim. 4452). Roadsides through pastures.
- * *S. orientale* L.: 29 (Dim. 2024, 2783), 8 (Dim. 4443). Roadsides.
- S. polyceratium* L.: (Gan. 1940: 29).
- Thlaspi arvense* L.: (Gan. 1940: 29).
- *° *T. bulbosum* Boiss.: 7 (Dim. 674). *Pinus* forests.
- . *T. microphyllum* Boiss. & Orph.: 30 (Dim. 4526). Pastures.
- T. ochroleucum* Boiss. & Heldr.: 9 (Dim. 527), 31 (Dim. 4462), 47 (Dim. 4512). *Abies* forests, scrubs with *Juniperus oxycedrus*, pastures.
- * *T. perfoliatum* L.: 52 (Dim. 426), 27 (Dim. 1230), 47 (Dim. 4435, 4485). Pastures, rocky pastures.
- T. rivale* C. Presl: 49 (Dim. 4459), 30 (Dim. 4565). Pastures, rocky places.
- Turritis pseudoturritis* (Boiss. & Heldr.) Velen.: 31 (Dim. 969), 29 (Dim. 2025), 42 (Dim. 2582). Pastures, torrent banks.
- Dipsacaceae**
- *. *Cephalaria ambrosioides* (Sm.) Roemer & Schultes: 28 (Dim. 26), 42 (Dim. 1893), 31

(Dim. 1985). Torrent banks, ravines.

° *C. tenuiloba* Strid: 28 (Dim. 1990). Rocky limestone slopes.

Dipsacus fullonum L.: 8 (Dim. 33). Wet places.

* *Knautia integrifolia* (L.) Bertol.: 31 (Dim. 1351), 42 (Dim. 2587). Pastures.

K. orientalis L.: 16 (Dim. 1541, 2361), 17 (Dim. 34, 747). Scrubs, disturbed ground.

* *Lomelosia brachiata* (Sm.) Greuter & Burdet: 29 (Dim. 1205, 2781). Roadsides through pastures.

Morina persica L.: 28 (Dim. 1095), 42 (Dim. 2595). Rocky places.

Scabiosa columbaria L. subsp. *ochroleuca* (L.) Celak.: (Halácsy 1901: 768).

Scabiosa crenata Cyr. subsp. *crenata*: 29 (Dim. 177), 16 (Dim. 1563), 15 (Dim. 1680), 42 (Dim. 1906). Rocky places.

. *S. taygeta* Boiss. & Heldr.: 6 (Dim. 1466), 30 (Dim. 1821), 25 (Dim. 4294). Rocky places, pastures, Pinus stands.

. *S. tenuis* Boiss.: 29 (Dim. 202), 11 (Dim. 2256). Roadsides.

Eleagnaceae

* {*Elaeagnus angustifolia* L.}: (Obs.). Roadsides.

Ericaceae

* *Erica arborea* L.: 9 (Dim. 848). Sparse Abies forests.

Euphorbiaceae

* *Euphorbia apios* L.: 6 (Dim. 419), 10 (Dim. 551), 15 (Dim. 1056). Pastures, Castanea stands.

° *E. deflexa* Sm.: 28 (Dim. 30), 31 (Dim. 972), 24 (Dim. 4537). Stony pastures, screes.

* *E. falcata* L.: 37 (Dim. 1512), 8 (Dim. 4612), 46 (Dim. 4660). Scrubs with Juniperus oxycedrus or Quercus coccifera.

E. glabriflora Vis.: 27 (Dim. 2685, 3072). Screes, stony places.

* *E. heldreichii* Boiss.: 41 (Dim. 2589), 25 (Dim. 4162). Torrent banks.

* *E. herniariifolia* Willd.: 15 (Dim. & Chr. 2305), 25 (Dim. 2496), 24 (Dim. 4236). Rocky pastures, ravines.

E. myrsinites L.: 27 (Dim. 126), 31 (Dim. 625), 25 (Dim. 3013), 27 (Dim. 4032). Pastures, stony places.

* *E. seguieriana* Necker subsp. *niciciana* (Borbás) Rech. fil.: 43 (Dim. 1482), 24 (Dim. 4235). Pastures.

* *E. tauriensis* All.: 37 (Dim. 1526). Roadsides.

* *Mercurialis ovata* Sternb. & Hoppe: 24 (Dim. 4225). Abies forests.

Fagaceae

Castanea sativa Miller: 5 (Dim. 297). On flysch soils.

Quercus cerris L.: 6 (Dim. 296, 4362), 17 (Dim. 4329). In deciduous forests on flysch soils.

Q. coccifera L.: 42 (Dim. 2614). Macchie, in Abies forests.

Q. delechampii Ten.: (Vliotis 1976: 41).

Q. frainetto Ten.: 10 (Dim. 2293), 19 (Dim. 2283), 14 (Dim. 4379). Forming pure & mixed forests, on flysch soils.

Q. petraea (Mattuschka) Liebl.: (Gan. 1940: 28).

Q. petraea (Mattuschka) Liebl. subsp. *iberica* (MB.) Krasil'n.: (Vliotis 1976: 41).

Quercus pubescens Willd.: 16 (Dim. 275, 2362), 42 (Dim. 2577), 11 (Dim. 4372), 1 (Dim. 4694). Forming pure & mixed stands on flysch soils.

Q. trojana Webb: 1 (Dim. 4696). Scrubs with Juniperus oxycedrus.

Gentianaceae

* *Blackstonia perfoliata* (L.) Hudson subsp. *perfoliata*: 16 (Dim. 74, 1278). Wet places in

pastures.

- * *Centaurium erythraea* Rafn subsp. *erythraea*: 16 (Dim. 75), 27 (Dim. 2886). Wet places in pastures & along roadsides.

Geraniaceae

- * *Erodium cicutarium* (L.) L'Her.: 15 (Dim. 1065), 26 (Dim. 2913), 47 (Dim. 4522). Pastures, rocky places.
E. guicciardii Boiss.: 15 (Dim. 1080), 16 (Dim. 83, 2868). Rocky places, rock crevices, on limestone.
 * *Geranium aristatum* Freyn. & Sint.: 8 (Dim. 4448). Torrent banks.
 * *G. asphodeloides* Burm. fil.: 9 (Dim. 861). Torrent beds.
G. bohemicum L.: (Gan. 1940: 29).
 * *G. columbinum* L.: 8 (Dim. 4436, 4615). Torrent banks, abandoned fields.
G. lucidum L.: 9 (Dim. 860), 15 (Dim. 1008), 42 (Dim. 2584). Screes, rock ledges, wet places.
 * *G. macrorrhizum* L.: 25 (Dim. 4160). Torrent banks.
G. macrostylum Boiss.: 16 (Dim. 606), 47 (Dim. 4412). Gravelly slopes.
G. molle L. subsp. *molle*: (Strid 1986: 547).
G. pyrenaicum Burm. fil.: 15 (Dim. 1047), 48 (Dim. 1339). Rocky slopes.
 * *G. reflexum* L.: 42 (Dim. 2650). Sparse Abies forests.
 * *G. robertianum* L. subsp. *purpureum* (Vill.) Nyman: 17 (Dim. 4446). Torrent banks.
G. rotundifolium L.: 29 (Dim. 178), 9 (Dim. 4437). Torrent banks, pastures.
G. subcaulescens DC.: 27 (Dim. 159), 15 (Dim. 1064), 30 (Dim. 2088). Rocky places, pastures, quarry places.
G. versicolor L.: 7 (Dim. 315), 9 (Dim. 862). Torrent banks.

Guttiferae

- Hypericum barbatum* Jacq.: 31 (Dim. 965), 50 (Dim. 2390), 31 (Dim. 2410). Rocky pastures, torrent banks.
 ° *H. elongatum* Ledeb. subsp. *tymphresteum* (Boiss. & Spruner) N. K. B. Robson: (Boiss. 1867: 799).
H. perforatum L.: 9 (Dim. 97, 372), 27 (Dim. 1697, 3055). Rocky places, pastures.
H. quadrangulum L.: 7 (Dim. 4737). Wet places through roadsides.
H. spruneri Boiss.: (Halácsy 1901: 276).
 ° *H. vesiculosum* Griseb.: 28 (Dim. 23). Screes.

Hippocastanaceae

- Aesculus hippocastanum* L.: 42 (Dim. 2576, 2662). Limestone rocks, torrent beds in Abies forests.

Juglanaceae

- Juglans regia* L.: (Obs.). Abies forests, fields.

Labiatae

- Ajuga chamaepitys* (L.) Schreber subsp. *chia* (Schreber) Arcangeli: 29 (Dim. 333), 16 (Dim. 2133). Roadsides, rocky places.
 * *A. orientalis* L.: 31 (Dim. 1383), 42 (Dim. 1264, 2538), 48 (Dim. 2157). Pastures, rocky places.
 * *A. reptans* L.: 47 (Dim. 509), 16 (Dim. 779), 30 (Dim. 2092). Wet places in pastures.
Ballota acetabulosa (L.) Benth.: 28 (Dim. 16), 16 (Dim. 1555, 4839). Rocks, stony places.
B. nigra L.: 19 (Dim. 4081). Roadsides.
 * *Calamintha grandiflora* (L.) Scheele: 42 (Dim. 2668), 24 (Dim. 4239). Rocky places, torrent banks.

- * *Lamium amplexicaule* L.: 15 (Dim. 1040). Pastures.
- * *L. bifidum* Cyr. subsp. *bifidum*: 9 (Dim. 4398). Abies forests.
- L. bifidum* Cyr. subsp. *balkanicum* Velen.: 10 (Dim. 567), 9 (Dim. 704). Stony pastures.
- L. garganicum* L. subsp. *laevigatum* Arcangeli: 30 (Dim. 1831), 15 (Dim. 2297). Pastures, rocky places, on limestone.
- ° *L. garganicum* L. subsp. *pictum* (Boiss. & Heldr.) P.W. Ball: (Strid & Tan: 1991: 94).
- L. maculatum* L.: (Gan. 1940: 32).
- Leonurus cardica* L.: (Halácsy 1902: 534).
- * *Lycopus europaeus* L.: 54 (Dim. 4700). Torrent banks.
- Marrubium peregrinum* L.: 16 (Dim. 1926), 9 (Dim. 2789), 8 (Dim. 4302). Roadsides, pastures.
- ° *M. velutinum* Sm.: 30 (Dim. 67, 152, 4318), 28 (Dim. 1096). Rocky places, pastures, on limestone.
- M. vulgare* L.: 8 (Dim. 4121). Roadsides.
- Melissa officinalis* L.: 54 (Dim. 243, 249). Torrent beds.
- * *Melittis melissophyllum* L.: 12 (Dim. 2269). Castanea forests.
- Mentha longifolia* (L.) Hudson: 49 (Dim. 205), 24 (Dim. 4241). Damp places in torrents.
- M. pulegium* L.: 13 (Dim. 4689). Damp places in pastures.
- M. spicata* L.: 49 (Dim. 203), 24 (Dim. 4274), 13 (Dim. 4377). Damp places.
- Nepeta nuda* L.: 28 (Dim. 20), 31 (Dim. 1426), 40 (Dim. 1593). Pastures, screes.
- . *N. spruneri* Boiss.: 15 (Dim. 95), 27 (Dim. 128), 31 (Dim. 195, 1431). Rocky places, screes, on limestone.
- Origanum vulgare* L. subsp. *hirtum* (Link) Letswaart: 49 (Dim. 217). Pastures, roadsides.
- Phlomis fruticosa* L.: 51 (Dim. 339), 29 (Dim. 2387). Macchie margins.
- * *Prunella laciniata* (L.) L.: 29 (Dim. 1208), 3 (Dim. 4323). Pastures, wet places along roadsides.
- * *P. vulgaris* L.: 54 (Dim. 238), 16 (Dim. 1281), 3 (Dim. 4324). Wet places in torrents.
- Salvia argentea* L.: 28 (Dim. 1117), 15 (Dim. & Chr. 2341), 25 (Dim. 3031). Stony pastures, screes, on limestone.
- S. candidissima* vahl: 28 (Dim. 4207, 4042). Stony pastures.
- S. scarlea* L.: 16 (Dim. 1545), 19 (Dim. 4078), 24 (Dim. 4288). Rocky places, roadsides, pastures.
- * *S. virgata* jacq.: 28 (Dim. 1090), 16 (Dim. 1292). Pastures.
- S. viridis* L.: (Gan. 1940: 32).
- Satureja alpina* (L.) Scheele. subsp. *meridionalis* (Nyman) Greuter & Burdet: 27 (Dim. 2772), 16 (Dim. 2797). Stony pastures, screes.
- S. calamintha* (L.) Scheele: 49 (Dim. 168, 220). Rocky places, pastures.
- . *S. cremnophila* (Boiss. & Heldr.) Briq.: 16 (Dim. 50, 4840), 43 (Dim. 1488), 27 (Dim. 3078). Limestone rocky places.
- * *S. graveolens* (MB.) Caruel: 23 (Dim. 4743). Pastures.
- ° *S. horvatii* Silic subsp. *macrophylla* (Halácsy) Baden.: 28 (Dim. 10, 199), 42 (Dim. 1612, 1886). Rocky pastures, rock crevices, screes.
- S. juliana* L.: 28 (Dim. 9), 30 (Dim. 4116). Rocky slopes, rock crevices.
- S. nepeta* (L.) Scheele: (Skrubis & Pinatsis 1987: 19).
- * *S. suaveolens* (Sm.) Watzl-Zeman: 7 (Dim. 892), 15 (Dim. 1066), 28 (Dim. 1133). Pinus forests, rocky places, pastures, roadsides.
- S. vulgaris* (L.) Fritsch: 49 (Dim. 206), 54 (Dim. 245), 42 (Dim. 2583). Wet places in torrents, Abies forests, macchie.
- Scutellaria alpina* L.: 27 (Dim. 1721, 2894), 32 (Dim. 1865). Stony pastures, screes.

- S. columnae* All. subsp. *columnae*: 19 (Dim. 4080). Forests.
S. galericulata L.: (Halácsy 1902: 495).
S. orientalis L. subsp. *alpina* (Boiss.) O. Schwarz: 29 (Dim. 111), 31 (Dim. 941), 50 (Dim. 2388). Scree, on limestone.
S. rupestris Boiss. & Heldr. subsp. *adenotricha* (Boiss. & Heldr.) Greuter & Burdet: 16 (Dim. 1320), 42 (Dim. 2653). Rocky places.
Sideritis raeseri Boiss. & Heldr. subsp. *raeseri*: 31 (Dim. 963, 1398), 42 (Dim. 4094). Stony places, pastures, scree.
Stachys alopecuros (L.) Benth.: 15 (Dim. 1029), 25 (Dim. 2992), 24 (Dim. 4272). Quarry places, stony pastures, scree.
* *S. annua* (L.) L. subsp. *annua*: 43 (Dim. 1500), 55 (Dim. 2198). Roadsides.
* *S. germanica* L. subsp. *germanica*: 29 (Dim. 2657). Pastures.
S. germanica L. subsp. *heldreichi* (Boiss.) Hayek: 11 (Dim. 2250), 15 (Dim. 4686). Pastures, stony slopes, on limestone.
* *S. plumosa* Griseb.: 32 (Dim. 4765). Rocky limestone places.
S. scardica (Griseb.) Hayek: 7 (Dim. 300, 889), 25 (Dim. 2956). Openings in coniferous forests, pastures.
S. tymphaea Hausskn.: 31 (Dim. 1403), 15 (Dim. 1660), 24 (Dim. 4238). Stony pastures, openings in *Abies* forests, scree, on limestone.
Teucrium capitatum L.: 16 (Dim. 47, 1931), 18 (Dim. 4388). Limestone rocks, pastures.
T. chamaedrys L. subsp. *chamaedrys*: 16 (Dim. 48, 1322), 29 (Dim. 1164, 1757). Limestone rocks, pastures.
* *T. flavum* L. subsp. *hellenicum* Rech. fil.: 16 (Dim. 49, 571, 934). Limestone rocks.
T. montanum L. subsp. *montanum*: 27 (Dim. 3092), 24 (Dim. 4275). Stony pastures, rocky places.
Thymus boissieri Halácsy: (Gan. 1940: 32).
T. leucotrichus Halácsy: 15 (Dim. 1084, 2814), 31 (Dim. 1440). Rocky slopes, stands with *Juniperus foetidissima*, on limestone.
T. longicaulis C. Presl subsp. *longicaulis*: 47 (Dim. 504), 9 (Dim. 711), 30 (Dim. 1777). Rocky pastures, stony places, roadsides.
° *T. rechingeri* Hartvig subsp. *macrocalyx* Hartvig: 31 (Dim. 1436), 27 (Dim. 2768). Rocky places, stony pastures, on limestone.
T. teucrioides Boiss. & Spruner: (Halácsy 1902: 566).
* *Ziziphora capitata* L.: 29 (Dim. 2519). Roadsides.
- Leguminosae**
- Anthyllis vulneraria* L. subsp. *bulgarica* (Sagorski) Cullen: 49 (Dim. 169), 42 (Dim. 2634), 26 (Dim. 4271). Stony & rocky places.
A. vulneraria L. subsp. *pindicola* Cullen: 29 (Dim. 2037), 16 (Dim. 2139), 13 (Dim. 2274). Stony slopes, rocky places in forests.
A. vulneraria L. subsp. *pulchella* (Vis.) Bornm.: 29 (Dim. 2076). Stony pastures.
Astracantha rumelica (Bunge) Réér & Podl.: 42 (Dim. 1871), 28 (Dim. 1993), 30 (Dim. 4533). Rocky slopes, pastures.
A. thracica (Griseb.) podl. subsp. *parnassi* (Boiss.) Greuter: (Gan. 1940: 30).
Astragalus angustifolius Lam.: 15 (Dim. 2878), 26 (Dim. 2916, 2931). Rocky slopes in pastures.
A. depressus L.: 29 (Dim. 2048), 15 (Dim. & Chr. 2312, 2326, 2330), 27 (Dim. 2900, 4028). Stony places in pastures, rocky terraces.
A. glycyphylloides DC.: 25 (Dim. 4168). Pastures.
A. glycyphyllos L.: 9 (Dim. 1951, 2871). Roadsides, pastures.

- ° *A. sempervirens* Lam. subsp. *cephalonicus* (C. Presl) Ascherson & Graebner: 9 (Dim. & Chr. 2348). Rocky slopes, pastures.
- A. sirinicus* Ten.: 31 (Dim. 977), 25 (Dim. 2469), 42 (Dim. 2551). Rocky slopes, pastures.
- Bituminaria bituminosa* (L.) Stirton: 37 (Dim. 1523). Roadsides, quarry places.
- Cercis siliquastrum* L.: 54 (Dim. 261), 10 (Dim. 2240). Roadsides, torrent banks.
- Chamaecytisus austriacus* (L.) Link: 16 (Dim. 279, 816), 9 (Dim. 849), 6 (Dim. 1782). Roadsides, forest margins.
- C. polytrichus* (MB.) Rothm.: 13 (Dim. 569), 10 (Dim. 640), 31 (Dim. 2149). Abies forests, forest margins.
- Colutea arborescens* L. subsp. *arborescens*: 16 (Dim. 599), 28 (Dim. 1150). Forest margins, limestone rocks.
- * *Coronilla scorpioides* (L.) Koch: 16 (Dim. 2843), 31 (Dim. 1343). Pastures.
- Dorycnium herbaceum* Vill.: 6 (Dim. 106, 1787). Forest openings.
- * *D. hirsutum* (L.) Ser.: 16 (Dim. 39), 6 (Dim. 1783). Pastures, roadsides.
- * *Galega officinalis* L.: 12 (Dim. 2004), 10 (Dim. 4062). Roadsides.
- *° *Genista millii* Boiss.: 6 (Dim. 876), 15 (Dim. 1048), 31 (Dim. 1370). Pastures, openings in Abies forests, sparse Abies forests.
- * *G. tinctoria* L.: 8 (Dim. 750), 29 (Dim. 1202), 6 (Dim. 1788). Abies forests, forests with *Quercus conferta*.
- Hippocrepis comosa* L.: 9 (Dim. 721), 29 (Dim. 1746), 31 (Dim. 2406), 27 (Dim. 2687). Scree, stony places, pastures, on limestone.
- H. emerus* (L.) Lassen subsp. *emeroides* (Boiss. & Spruner) Lassen: 16 (Dim. 285), 50 (Dim. 961), 24 (Dim. 4309). Rocky places.
- * *H. unisiliquosa* L. subsp. *unisiliquosa*: 8 (Dim. 4713), 52 (Dim. 4714). Scrubs with *Juniperus oxycedrus*, pastures.
- * *Hymenocarpus circinnatus* (L.) Savi: 12 (Dim. 563), 10 (Dim. 2254). Roadsides.
- * *Lathyrus aphaca* L.: 12 (Dim. 647), 16 (Dim. 752). Roadsides, pastures.
- L. cicera* L.: 29 (Dim. 1193, 2782). Stony pastures.
- * *L. digitatus* (MB) Fiori: 6 (Dim. 485), 47 (Dim. 505), 9 (Dim. 854), 16 (Dim. 594, 1293). Openings in Abies forests.
- * *L. grandiflorus* Sm.: 31 (Dim. 1485), 42 (Dim. 2588). Abies forests.
- * *L. latifolius* L.: 10 (Dim. 1997, 2228). Pastures.
- L. laxiflorus* (Desf.) O. Kuntze: 12 (Dim. 536), 16 (Dim. 597), 10 (Dim. 645). Abies forests, roadsides, rocky slopes.
- * *L. niger* (L.) Bernh.: 12 (Dim. 2260), 13 (Dim. 4074). Mixed forests, roadsides.
- * *L. nissolia* L.: 48 (Dim. 2159). Roadsides.
- * *L. pratensis* L.: 6 (Dim. 883), 16 (Dim. 1282). Roadsides, pastures.
- * *L. setifolius* L.: 16 (Dim. 612), 28 (Dim. 1178), 29 (Dim. 1192). Roadsides, rocky pastures, sparse Abies forests.
- * *L. sphaericus* Retz.: 10 (Dim. 646), 16 (Dim. 759). Rocky pastures, roadsides.
- L. venetus* (Miller) Wohlf.: (Gan. 1940: 30).
- Lotus corniculatus* L.: 13 (Dim. 577), 31 (Dim. 1856), 25 (Dim. 2463). Pastures, stony places, scree, Castanea stands, roadsides.
- Medicago falcata* L.: 15 (Dim. 1027), 30 (Dim. 4124). Pastures.
- M. lupulina* L.: 6 (Dim. 1791), 15 (Dim. 2336), 30 (Dim. 4109). Pastures, rocky places.
- * *M. medicaginoides* (Retz.) E. Small: 16 (Dim. 809), 28 (Dim. 1103). Rocky pastures.
- * *M. minima* (L.) L.: 16 (Dim. 782). Pastures.
- * *M. monspeliaca* (L.) Trautv.: 40 (Dim. 4704). Pastures.

- * *M. orbicularis* (L.) Bartal.: 16 (Dim. 795), 31 (Dim. 1356). Pastures.
- * *M. polymorpha* L.: 31 (Dim. 2418), 40 (Dim. 1584). Pastures.
- * *M. rigidula* (L.) All.: 29 (Dim. 2046), 11 (Dim. 2253), 31 (Dim. 2400). Pastures, roadsides.
- M. sativa* L.: 29 (Obs.). Abandoned fields.
- * *Melilotus albus* Medicus: 55 (Dim. 329). Roadsides.
- ° *M. graecus* (Boiss. & Spruner) Lassen: 16 (Dim. 805), 42 (Dim. 2539). Rocky places.
- * *M. indicus* (L.) All.: 16 (Dim. 1271). Pastures.
- * *M. neapolitanus* Ten.: 7 (Dim. 910), 12 (Dim. 1998), 16 (Dim. 2364). Pastures, Abies forests, roadsides.
- Onobrychis alba* (Waldst. & Kit.) Desv. subsp. *laconica* (Boiss.) Hayek: 42 (Dim. 2632), 27 (Dim. 2722, 2776). Rocky places, pastures.
- * *O. caput-galli* Lam.: 8 (Dim. 4569). Scrubs with *Juniperus oxycedrus* on alluvial soils.
- ° *O. montana* D C. subsp. *macrocarpa* Strid.: 29 (Dim. 1761), 26 (Dim. 2908, 2923), 30 (Dim. 4110). Pastures on limestone.
- . *O. montana* D C. subsp. *scardica* (Griseb.) P. W. Ball: 30 (Dim. 4138, 4154). Stony places, pastures.
- * *Ononis pusilla* L.: 28 (Dim. 1163), 8 (Dim. 2820). Roadsides, edges of Abies forests.
- O. spinosa* L.: 28 (Dim. 1). Torrent banks, pastures.
- * *Pisum sativum* L.: 16 (Dim. 807, 2838). Rocky places.
- Podocytisus caramanicus* Boiss. & Heldr.: 1 (Dim. 4693). Evergreen scrubs.
- * {*Robinia pseudoacacia* L.}: 50 (Dim. 193), 29 (Dim. 2389). Roadsides, torrent banks, screes.
- Securigera varia* (L.) Lassen: 16 (Dim. 1273), 35 (Dim. 1527), 3 (Dim. 4325). Moist places, brooklets, forest margins.
- Spartium junceum* L.: 50 (Dim. 194). Roadsides, torrent banks, screes, macchie.
- Trifolium alpestre* L.: 9 (Dim. 841), 15 (Dim. 1638), 6 (Dim. 2219). Forest openings, sparse Abies forests.
- T. angustifolium* L.: 7 (Dim. 1457). Dry places.
- T. arvense* L.: 16 (Dim. 38), 29 (Dim. 1725), 42 (Dim. 2605). Pastures, rocky places, roadsides.
- T. campestre* Schreber: 16 (Dim. 749, 789), 40 (Dim. 1577). Abies forests, damp places, pastures.
- * *T. cherleri* L.: 16 (Dim. 2372). Pastures.
- * *T. glomeratum* L.: 6 (Dim. 907), 11 (Dim. 2252). Pastures.
- T. grandiflorum* Schreber: 31 (Dim. 1368), 42 (Dim. 1601), 11 (Dim. 2268). Torrent banks, openings in Abies forests.
- T. hirtum* All.: 6 (Dim. 1785), 17 (Dim. 2817), 16 (Dim. 2829). Pastures, roadsides.
- * *T. hybridum* L. subsp. *elegans* (Savi) Ascherson & Graebner: 42 (Dim. 1890), 9 (Dim. 1948). Pastures.
- * *T. lucanicum* Guss.: 42 (Dim. 1602, 2606). Pastures.
- . *T. medium* L. subsp. *balcanicum* (Heuffel) Hendrych: 9 (Dim. 1941), 26 (Dim. 2922). Pastures.
- T. noricum* Wulfen.: 30 (Dim. 141), 27 (Dim. 1258, 2752), 25 (Dim. 2996, 3020). Rocky places, stony pastures.
- T. ochroleucon* Hudson: 29 (Dim. 1732), 6 (Dim. 1786), 25 (Dim. 2967). Pastures, Abies forests.
- ° *T. parnassi* Boiss. & Spruner: 30 (Dim. 4137), 27 (Dim. 4190). Rocky places, stony pastures.

- * *T. patulum* Tausch: 8 (Dim. 746), 42 (Dim. 2604). Pastures.
- T. physodes* M B.: 12 (Dim. 561, 649), 16 (Dim. 829), 9 (Dim. 843). Pastures, rocky places, Castanea stands, roadsides.
- . *T. pignanii* Fauché & Chaub.: 9 (Dim. 844), 15 (Dim. 1642), 42 (Dim. 2542). Abies forests, roadsides, rocky places.
- T. repens* L.: 9 (Dim. 872), 24 (Dim. 4301). Pastures, damp places, abandoned fields.
- * *T. scabrum* L.: 16 (Dim. 2371). Pastures.
- . *T. velenovskyi* Vandas: (Voliotis 1988: 19).
- * *T. xanthinum* Freyn: 16 (Dim. & Chr. 2363), 42 (Dim. 2619). Pastures.
- * *Trigonella gladiata* MB.: 29 (Dim. 2026). Roadsides.
- * *Vicia bithynica* (L.) L.: 8 (Dim. 2819). Roadsides.
- * *V. grandiflora* Scop.: 22 (Dim. 1531), 42 (Dim. 4716). Pastures, Abies forests.
- * *V. hirsuta* (L.) S. F. Gray: 16 (Dim. & Chr. 2376), 48 (Dim. 2160), 9 (Dim. 2806). Roadsides, pastures, torrent banks.
- V. lathyroides* L.: 9 (Dim. 709), 16 (Dim. & Chr. 2376), 31 (Dim. 623). Pastures, forest openings.
- * *V. melanops* Sm.: 11 (Dim. 2444). Roadsides.
- * *V. narbonensis* L.: 40 (Dim. 1581), 29 (Dim. 4093), 47 (Dim. 4411). Pastures, rocky places.
- * *V. pannonica* Crantz.: 54 (Dim. 2141). Roadsides.
- V. sativa* L.: (Strid 1986: 487).
- V. serinica* Uechtr. & Huter: 15 (Dim. 1654, 2877). Rocky places.
- V. tenuifolia* Roth: 15 (Dim. 1015), 19 (Dim. 4650). Pastures, rocky places, forest margins.
- * *V. villosa* Roth subsp. *eriocarpa* (Hauskn.) P. W. Ball: 16 (Dim. 43, 2830), 29 (Dim. 1194). Pastures, roadsides, rocky places.

Linaceae

- Linum aroanium* Boiss. & Orph.: 15 (Dim. 1025), 42 (Dim. 2255). Rocky pastures, slopes, on limestone.
- * *L. bienne* Miller: 9 (Dim. 845), 6 (Dim. 2223). Pastures.
- L. catharticum* L.: 30 (Dim. 4214), 24 (Dim. 4228). Moist places, pastures.
- * *L. corymbulosum* Reichenb.: 53 (Dim. 4649). Pastures.
- . *L. elegans* Boiss.: (Strid 1986: 558).
- * *L. nodiflorum* L.: 51 (Dim. 4648). Evergreen scrubs.
- . *L. tauricum* Willd. subsp. *albanicum* (Janchen) Greuter & Burdet: (Strid 1986: 556).

Loranthaceae

- * *Arceuthobium oxycedri* (DC.) MB.: 29 (Dim. 990). Parasitic on *Juniperus oxycedrus*.
- Loranthus europaeus* Jacq.: 10 (Dim. 323). Parasitic on *Castanea* & *Quercus*.
- Viscum album* L.: 16 (Dim. 325), 51 (Dim. 874). Parasitic on *Abies*, *Robinia* & *Spartium*.

Lythraceae

- * *Lythrum salicaria* L.: 12 (Dim. 4056), 10 (Dim. 4365). Wet places.

Malvaceae

- * *Alcea biennis* Winterl: 16 (Dim. 1554). Rocky places.
- * *Althaea hirsuta* L.: 16 (Dim. 2842). Rocky places.
- * *Lavatera thuringiaca* L.: 6 (Dim. 4335). Roadsides.
- Malva cretica* Cav.: (Gan. 1940: 29).
- * *M. moschata* L.: 15 (Dim. 1532, 1962), 6 (Dim. 1779), 9 (Dim. 4346). Pastures, roadsides.

* *M. sylvestris* L.: 16 (Dim. 1300). Edges of *Abies* forests.

Moraceae

* *Ficus carica* L.: 23 (Dim. 4712). Torrent banks.

Oleaceae

* *Fraxinus ornus* L.: 28 (Dim. 72), 42 (Dim. 2569), 25 (Dim. 4317). Rocky places, slopes.

{*Jasminum humile* L.}: (Gan. 1940: 32).

{*Ligustrum vulgare* L.}: 51 (Obs.).

* *Olea europaea* L. sump. *oleaster* (Hoffmanns & Link) Negodi: 45 (Dim. 367). Evergreen scrubs.

Phillyrea latifolia L.: 40 (Dim. 1582). Macchie, torrent banks.

Onagraceae

* *Circaea lutetiana* L.: 19 (Dim. 4651). Rodsides, torrents.

* *Epilobium angustifolium* L.: 9 (Dim. 1536, 4553), 24 (Dim. 4632). Roadsides, humus rich soils in rocky slopes.

E. collinum C. C. Gmelin: (Gan. 1940: 30).

E. dodonaei Vill.: 16 (Dim. 1548), 27 (Dim. 1708), 18 (Dim. 4383). Quarry places, pastures.

E. gemmascens C. A. Meyer: 24 (Dim. 4243, 4298). Wet places in pastures.

E. hirsutum L.: 16 (Dim. 41), 51 (Dim. 4334). Wet places.

E. lanceolatum Sebastiani & Mauri: 48 (Dim. 1340), 6 (Dim. 1802). Pastures.

E. parviflorum Schreber: 55 (Dim. 212). Wet places.

Orobanchaceae

Orobanche major L.: (Strid & Tan 1991: 274).

O. purpurea Jacq.: 28 (Dim. 4043). Gravelly slopes, parasitic on Asteraceae.

Papaveraceae

* *Corydalis cava* (L.) Schweigger & Koerte subsp. *blanda* (Schott) Nyman: 16 (Dim. 618), 24 (Dim. 4541). *Abies* forests.

Corydalis solida (L.) Clairv. subsp. *densiflora* (C. Presl) Hayek: 29 (Dim. 439, 466), 9 (Dim. 522), 47 (Dim. 4500). Pastures, edges of lake, *Abies* forests, *Juniperus* scrubs.

* *Fumaria officinalis* L.: 16 (Dim. 592, 1591), 47 (Dim. 4414). Pastures, rocky places.

* *Papaver apulum* Ten.: 6 (Dim. 678), 47 (Dim. 4484). Roadsides, pastures.

P. rhoeas L.: 28 (Dim. 1127), 13 (Dim. & Chr. 2289), 31 (Dim. 2151). Roadsides, pastures.

Parnassiaceae

Parnassia palustris L.: 30 (Dim. 4213), 24 (Dim. 4260). Wet places near springs & streams.

Plantaginaceae

Plantago argentea Chaix: 15 (Dim. 1645, 1960), 30 (Dim. 4542). Quarry places, pastures, on limestone.

° *P. atrata* Hoppe subsp. *graeca* (Halácsy) J. Holub: 27 (Dim. 1232, 1255), 15 (Dim. 1689). Pastures on limestone.

P. holosteam Scop.: 7 (Dim. 915), 31 (Dim. 1408), 24 (Dim. 4295). Pastures, wet places.

P. lanceolata L.: 28 (Dim. 179), 44 (Dim. 360), 9 (Dim. 864), 7 (Dim. 1197). Pastures, roadsides, wet places, screes, torrent beds.

* *P. major* L. subsp. *intermedia* (Gilib.) Lange: 45 (Dim. 365), 38 (Dim. 1519), 22 (Dim. 1528). Wet places along roadsides, torrent beds.

. *P. reniformis* G. Beck: (Strid & Tan 1991: 336).

Platanaceae

Platanus orientalis L.: 8 (Obs.). By streams.

Plumbaginaceae

Acantholimon graecum F. K. Meyer: 28 (Dim. 28), 31 (Dim. 1423), 24 (Dim. 4300).
Rocky places, pastures.

Armeria canescens (Host) Boiss.: 7 (Dim. 912), 42 (Dim. 2670), 27 (Dim. 4022).
Pastures, rocky places.

° *A. undulata* (Bory & Chaub.) Boiss.: (Gan. 1940: 31).

* *Plumbago europaea* L.: 16 (Dim. 4305). Rocky places in pastures.

Polygalaceae

Polygala major Jacq.: 31 (Dim. 626), 7 (Dim. 1465), 29 (Dim. 2035), 6 (Dim. 2221).
Forest clearings, pastures.

P. nicaeensis Koch subsp. *mediterranea* Chodat: 31 (Dim. 1375), 27 (Dim. 2703, 2750).
Rocky places, pastures, Juniperus scrubs.

Polygonaceae

Atraphaxis billardieri Jaub. & Spach: (Halácsy 1904: 69).

* *Persicaria maculosa* S. F. Gray: 12 (Dim. 2001). Wet places along roadsides.

* *Polygonum arenarium* Waldst. & Kit.: 44 (Dim. 363), 15 (Dim. 1952). Wet places
along roadsides, stream beds.

P. aviculare L.: 30 (Dim. 1824). Pastures.

Rumex acetosella L. subsp. *acetoselloides* (Balansa) Nijs: 31 (Dim. 1372, 1387), 42
(Dim. 2603). Pastures, rocky places.

* *R. conglomeratus* Murray: 16 (Dim. 37), 6 (Dim. 1812), 15 (Dim. 2813). Pastures,
forests with Juniperus foetidissima.

R. kernerii Borbás: 27 (Dim. 2899). Pastures, forest margins.

R. nebroides Campd.: 27 (Dim. 1225), 15 (Dim. 2321), 24 (Dim. 4530). Pastures, rock
crevices.

R. nepalensis Sprengel: 7 (Dim. 919), 26 (Dim. 2936). Pinus forests, roadsides, forest
clearings, stony slopes.

* *R. pulcher* L.: 16 (Dim. 1279). Pastures.

* *R. tuberosus* L.: 16 (Dim. 619, 803), 7 (Dim. 896), 9 (Dim. 4477). Pastures, rocky
places, by torrents.

Portulacaceae

* *Portulaca oleracea* L.: 38 (Dim. 4721). Roadsides.

Primulaceae

* *Anagalis arvensis* L.: 38 (Dim. 1514), 11 (Dim. 2242), 15 (Dim. 1959). Roadsides.

* *A. foemina* Miller: 38 (Dim. 1514), 43 (Dim. 1502). Roadsides.

Cyclamen hederifolium Aiton: 7 (Dim. 393), 16 (Dim. 460). Forests, ravines.

Lysimachia atropurpurea L.: 44 (Dim. 357), 45 (Dim. 1574). Torrent beds.

L. punctata L.: 54 (Dim. 260), 9 (Dim. 1630), 13 (Dim. 4067). Damp places, roadsides.

Primula veris L. subsp. *suaveolens* (Bertol.) Guterm. & Ehrend.: 7 (Dim. 488), 15 (Dim.
1663, 2317). Pastures, forest clearings.

Pyrolaceae

Monotropa hypopitys L.: 42 (Dim. 1924, 2575), 19 (Dim. 4083). Abies forests.

Rafflesiaceae

* *Cytinus hypocistis* (L.) L. subsp. *hypocistis*: 10 (Dim. 2232). Parasitic on Cistaceae.

Ranunculaceae

- * *Anemone* cf. *apennina* L.: 10 (Dim. 549), 13 (Dim. 575). Forests with *Abies* & *Castanea*.
- A. blanda* Schott & Kotschy: 8 (Dim. 443), 33 (Dim. 470), 9 (Dim. 666). Pastures, margins of *Abies* forests, *Castanea* stands.
- * *A. pavonina* Lam.: 10 (Dim. 545), 13 (Dim. 580), 3 (Dim. 677). Edges of conif. forests.
- Caltha palustris* L.: 9 (Dim. 525). Wet places.
- Clematis flammula* L.: 52 (Dim. 232). Macchie.
- C. vitalba* L.: 16 (Dim. 44, 373), 10 (Dim. 4051). Deciduous scrubs, limestone rocks.
- * *Consolida ajacis* (L.) Schur: 16 (Dim. 1291), 9 (Dim. 4341). Pastures.
- * *C. regalis* S. F. Gray subsp. *paniculata* (Host) Soó: 24 (Dim. 4224). Rocky slopes in pastures.
- Delphinium fissum* Waldst. & Kit.: 15 (Dim. 1643), 24 (Dim. 4259). Pastures, rocky slopes.
- D. peregrinum* L.: 49 (Dim. 171). Rocky places, roadsides.
- Helleborus odorus* Willd.: 9 (Dim. 61, 531), 7 (Dim. 398), 42 (Dim. 1909). Conif. forests, pastures, forest margins.
- Nigella arvensis* L.: 28 (Dim. 14), 16 (Dim. 42). Pastures, screes.
- N. damascena* L.: 49 (Dim. 163), 16 (Dim. 770, 2375), 29 (Dim. 1161). Pastures, roadsides, rocky & stony places.
- Ranunculus brevifolius* Ten.: 27 (Dim. 1254), 25 (Dim. 2999). Limestone screes in pastures.
- R. ficaria* L. subsp. *ficariiformis* Rouy & Fouc.: 7 (Dim. 399), 9 (Dim. 521), 16 (Dim. 557). *Pinus* forests, pastures, roadsides.
- * *R. millefoliatus* Vahl: 47 (Dim. 518), 48 (Dim. 630, 2162). Pastures.
- R. paludosus* Poir.: 13 (Dim. 554). Forest clearings, pastures.
- R. psilostachys* Griseb.: 31 (Dim. 985), 15 (Dim. 1072). Pastures.
- * *R. repens* L.: 31 (Dim. 1392, 1418). Torrent banks.
- R. sartorianus* Boiss. & Heldr.: 30 (Dim. 738). Pastures.
- * *R. sprunerianus* Boiss.: 16 (Dim. 591), 15 (Dim. 682). Pastures.
- Thalictrum aquilegifolium* L.: 9 (Dim. 4702). Pastures, stony & shady places.
- T. minus* L. subsp. *saxatile* Hooker fil.: 15 (Dim. 1013), 25 (Dim. 2964, 3024). Rocky slopes.

Resedaceae

- * *Reseda lutea* L.: 29 (Dim. 2142), 1 (Dim. 4692). Roadsides.

Rhamnaceae

- Frangula rupestris* (Scop.) Schur: 16 (Dim. 1295), 24 (Dim. 4310). Limestone rocks, screes.
- * *Paliurus spina-christi* Miller: 45 (Obs.). Evergreen scrubs.
- Rhamnus alpina* L. subsp. *fallax* (Boiss.) Maire & Petitmengin: 15 (Dim. 1010), 25 (Dim. 2467). Ravines, rocky places, screes.
- . *R. saxatilis* Jacq. subsp. *prunifolia* (Sm.) Aldén: 28 (Dim. 324, 1147). Limestone rocks, Juniperus scrubs.

Rosaceae

- Agrimonia eupatoria* L. subsp. *eupatoria*: 54 (Dim. 247). Torrent banks.
- Alchemilla acutiloba* Opiz: 31 (Dim. 1427), 24 (Dim. 4219). Wet pastures, along streams.
- A. gracilis* Opiz: (Strid 1986: 425).

- . *A. heterotricha* Rothm.: 42 (Dim. 1900). Wet places in rivulets.
A. xanthochlora Rothm.: (Strid 1986: 425).
 * *Aphanes arvensis* L.: 8 (Dim. 4444). Roadsides.
Aremonia agrimonioides (L.) DC.: 16 (Dim. 229), 6 (Dim. 680). Pinus forests, pastures.
Cotoneaster integerrimus Medicus: 31 (Dim. 355), 15 (Dim. 2322). Rocky slopes, pastures.
C. nebrodensis (Guss.) C. Koch: 28 (Dim. 1148), 15 (Dim. 1533). Pastures, rocky places.
 . *Crataegus heldreichii* Boiss.: (Polunin 1980: 103).
C. monogyna Jacq.: 16 (Dim. 281), 28 (Dim. 1137), 27 (Dim. 1706). Pastures, forest margins, screes.
C. orientalis Pallas: 48 (Dim. 188), 7 (Dim. 927), 12 (Dim. 2264). Pastures, rocky slopes.
 * *Filipendula vulgaris* Moench: 7 (Dim. 923, 1473), 6 (Dim. 1797). Pinus forests.
Fragaria vesca L.: 10 (Dim. 500), 9 (Dim. 667), 16 (Dim. 2357). Forest openings, pastures, by mountain roads, ravines.
 * *Geum heterocarpum* Boiss.: 42 (Dim. 1904, 2643). Stony slopes in *Abies* forests, on limestone.
G. urbanum L.: 6 (Dim. 104), 54 (Dim. 246), 8 (Dim. 4402). In torrents, pastures.
 * *Malus dasycphylla* Borkh.: 7 (Dim. 63), 49 (Dim. 215). Pastures, openings in *Abies* forests.
Potentilla argentea L.: (Gan. 1940: 29).
P. micrantha Ramond: 6 (Dim. 484), 13 (Dim. 548). Openings in *Abies* forests, pastures.
 * *P. reptans* L.: 49 (Dim. 216), 7 (Dim. 887), 29 (Dim. 1207). Torrents, roadsides.
P. speciosa Willd.: 30 (Dim. & Georg. 150), 42 (Dim. 1615). Crevices of limestone rocks.
Prunus cocomilia Ten.: 29 (Dim. 343), 16 (Dim. 2109). Pastures, screes, forest margins.
 {*P. domestica* L. subsp. *insititia* (L.) C. K. Schneider}: (Gan. 1940: 29).
P. mahaleb L.: 16 (Dim. 228), 28 (Dim. 1152), 42 (Dim. 1874). Screes, *Juniperus* scrubs.
P. prostrata Labill.: 28 (Dim. 13), 16 (Dim. 2128), 27 (Dim. 4009). Limestone rocks, rocky places.
P. spinosa L.: 8 (Dim. 234), 16 (Dim. 369). Pastures, roadsides, hedges.
 * *P. webbii* (Spach) Vierh.: 47 (Dim. 4482). Rocky pastures.
Pyrus amygdaliformis Vill.: 16 (Dim. 280). Pastures.
 * {*P. communis* L.}: 9 (Dim. 1003). Roadsides.
Rosa agrestis Savi: 16 (Dim. 283), 11 (Dim. 2243), 52 (Dim. 4393). Rocky slopes, stony pastures, roadsides.
R. arvensis Hudson: 14 (Dim. 2276). Torrent banks, deciduous forests.
R. canina L.: 8 (Dim. 751), 10 (Dim. 2237), 42 (Dim. 2663). Forest margins, pastures, slopes, roadsides.
R. heckeliana Tratt.: 26 (Dim. 2927), 27 (Dim. 4001), 25 (Dim. 4152). Rocky slopes, pastures, ravines.
R. micrantha Borrer: (Voliotis 1976: 42).
R. pulverulenta Bieb.: 31 (Dim. 987), 28 (Dim. 1149), 42 (Dim. 2664). Rocky slopes, pastures.
Rubus caesius L.: (Gan. 1940: 29).
R. canescens DC.: 16 (Dim. 2824). Rocky slopes, quarry places, ravines, scrubs.
 * *R. hirtus* Waldst. & Kit.: 6 (Dim. 305), 9 (Dim. 1634). Roadsides within *Abies* forests.

- R. ulmifolius* Schott: 54 (Dim. 257), 31 (Dim. 1966), 16 (Dim. 1294). Rocky places, pastures, roadsides.
- Sanguisorba minor* Scop. subsp. *muricata* (Spach) Briq.: 30 (Dim. 731), 15 (Dim. 1958), 6 (Dim. 2290). Forest clearings, pastures.
- Sorbus aria* (L.) Crantz subsp. *aria*: 29 (Dim. 197), 15 (Dim. 1011, 2285). Rocky ravines, limestone cliffs, slopes.
- * *S. aucuparia* L.: 36 (Dim. 4701). Abies forests.
- S. torminalis* (L.) Crantz: 54 (Dim. 264), 40 (Dim. 1580). Abies forests, rocky slopes.
- S. umbellata* (Desf.) Fritsch: 29 (Dim. 15), 28 (Dim. 1989, 1674). Rocky slopes, cliffs.
- Rubiaceae**
- ° *Asperula aristata* L. fil. subsp. *thessala* (Boiss. & Heldr.) Hayek: (Strid & Tan 1991: 286).
- . *A. aristata* L. fil. subsp. *condensata* (Heldr. ex Boiss.) Ehrend & Krendl: 31 (Dim. 1425), 9 (Dim. 1636). Rock crevices, pastures.
- ° *A. boissieri* Heldr.: (Polunin 1980: 104).
- *. *A. chlorantha* Boiss. & Heldr.: 16 (Dim. 152), 29 (Dim. 875), 36 (Dim. 1524). Rocky places, pastures.
- A. laevigata* L.: 43 (Dim. 1336), 7 (Dim. 1468). Forests clearings, Abies forests.
- A. nitida* Sm.: 27 (Dim. 2718, 2767), 30 (Dim. 4143). Rocky places, pastures.
- ° *A. oetaea* (Boiss.) Heldr.: 31 (Dim. 956), 25 (Dim. 2947, 2462), 30 (Dim. 4104). Rocky places, screes, cliffs, pastures.
- ° *A. pinifolia* (Boiss.) Heldr.: 42 (Dim. 1616). Rocks, screes.
- . *A. purpurea* (L.) Ehrend. subsp. *apiculata* (Sm.) Ehrend.: 29 (Dim. 1752), 30 (Dim. 4104). Screes, rock crevices, on limestone, pastures.
- A. purpurea* (L.) Ehrend. subsp. *purpurea*: (Strid & Tan 1991: 299).
- Crucianella angustifolia* L.: 16 (Dim. 1301), 31 (Dim. 1357), 27 (Dim. 3062). Stony places, pastures.
- Cruciata laevipes* Opiz: 16 (Dim. 80), 9 (Dim. 715), 15 (Dim. 1020). Rocky places, pastures, roadsides.
- C. pedemontana* (Bellardi) Ehrend.: 6 (Dim. 879), 29 (Dim. 1733). Pastures, cliffs.
- ° *Galium absurdum* Krendl: 16 (Dim. 4833). Abies forests, rock crevices.
- G. aparine* L.: 7 (Dim. 891), 28 (Dim. 1102), 24 (Dim. 4634). Pinus forests, screes, stony pastures.
- ° *G. citraceum* Boiss.: (Strid & Tan 1991: 313).
- . *G. degenii* Bald.: (Gan. 1940: 32).
- . *G. hellenicum* Krendl: 28 (Dim. 1104), 27 (Dim. 3070), 25 (Dim. 4101). Abies forests, rocky places, screes, pastures.
- G. incanum* Sm. subsp. *incanum*: 28 (Dim. 1118), 27 (Dim. 2701, 3085, 4015). Rocks, screes, stony pastures.
- *. *G. intricatum* Margot & Reuter: 38 (Dim. 1518), 42 (Dim. 2585). Roadsides.
- *. *G. laconicum* Boiss. & Heldr.: 42 (Dim. 1912). Torrents watershed.
- G. mollugo* L.: (Gan. 1940: 32).
- . *G. oreophilum* Krendl: (Strid & Tan 1991: 315).
- * *G. pseudaristatum* Schur: 42 (Dim. 2568). Torrents watershed.
- G. rotundifolium* L.: 28 (Dim. & Georg. 157), 7 (Dim. 314, 916). Abies forests, Juniperus scrubs, pastures.
- * *G. verticillatum* Danth.: 16 (Dim. 1302). Rocky places in pastures.
- G. verum* L.: (Gan. 1940: 32).
- * *Sherardia arvensis* L.: 16 (Dim. 767), 8 (Dim. 4440), 47 (Dim. 4477). Pastures,

openings in *Platanus* forests.

- . *Valantia aprica* (Sm.) Boiss. & Heldr.: 15 (Dim. & Chr. 2300), 27 (Dim. 1215,4185).
Screes, rocky places, stony pastures.

Salicaceae

- * *Populus alba* L.: 55 (Dim. 2199). Roadsides.
* *P. nigra* L.: 7 (Dim. 4097). Pastures.
* *P. tremula* L.: 25 (Dim. 4159). Torrent banks in slopes.
* *Salix alba* L.: 54 (Dim. 265). Torrent beds.
* *S. alba X fragilis*: 5 (Dim. 298), 11 (Dim. 2257), 17 (Dim. 4441). Torrent banks.
* *S. amplexicaulis* Bory: 50 (Dim. 1976), 6 (Dim. 4401). Torrent beds.
* *S. eleagnos* Scop. subsp. *eleagnos*: 38 (Dim. 1517), 50 (Dim. 1975). Torrent beds.

Santalaceae

- Thesium arvense* Horvátovszky: 30 (Dim. 4132), 49 (Dim. 4460). Rocky places, pastures.
T. divaricatum Jan: 16 (Dim. 1936). Rocky places.

Saxifragaceae

- Saxifraga adscendens* L. subsp. *parnassica* (Boiss. & Heldr.) Hayek: 30 (Dim. 1823), 15 (Dim. 2338). Pastures, quarry places, slopes.
*. *S. chrysopteniifolia* Boiss.: 15 (Dim. 1662), 42 (Dim. 2677). Humus rich rocky soils in slopes with *Abies* forests.
S. exarata Vill.: 42 (Dim. 1888). Rock crevices.
* *S. graeca* Boiss.: 12 (Dim. 557, 659), 7 (Dim. 920), 31 (Dim. 1376). Pastures, *Pinus* forests, mixed forests.
S. paniculata Miller: 27 (Dim. 4189), 31 (Dim. 2442), 15 (Dim. 1646). Rock crevices.
S. rotundifolia L. subsp. *rotundifolia*: 42 (Dim. 1613, 1896), 24 (Dim. 4535). Damp, humus - rich soils in semi - shade, rocky slopes.
S. rotundifolia L. subsp. *taygetea* (Boiss. & Heldr.) Maire & Petitmengin: 30 (Dim. 134), 15 (Dim. 4688). Rocks, screes.
S. tridactylites L.: 15 (Dim. & Chr. 2327, 2339), 47 (Dim. 4524). Rocky slopes, stony pastures.

Scrophulariaceae

- * *Bellardia trixago* (L.) All.: 11 (Dim. 2255). Roadsides.
* *Chaenorhinum minus* (L.) Lange: 29 (Dim. & Georg. 109, Dim. 2517). Roadsides.
C. origanifolium (L.) Kostel.: (Strid & Tan 1991: 200).
Digitalis ferruginea L.: 7 (Dim. 1814), 16 (Dim. 1540), 42 (Dim. 1915). Rocky places in *Abies* forests.
* *D. grandiflora* Miller: 22 (Dim. 4698). *Castanea* forests.
*° *D. laevigata* Waldst. & Kit. subsp. *graeca* (Ivanina) Werner: 41 (Dim. 1600), 13 (Dim. 4071). Roadsides, pastures.
Euphrasia pectinata Ten.: 7 (Dim. 1813), 24 (Dim. 4218). Forest openings, wet places in pastures.
E. salisburgensis Funck: 27 (Dim. 1716), 30 (Dim. 1835), 42 (Dim. 1873). Stony pastures, rocky places.
* *Kickxia spuria* (L.) Dumort. subsp. *integrifolia* (Brot.) R. Fernandes: 44 (Dim. 362). River beds.
* *Linaria dalmatica* (L.) Miller: 2 (Dim. 4363). Edges of *Abies* forests.
L. pelisseriana (L.) Miller: 15 (Dim. 1016), 6 (Dim. 2225). Pastures, *Pinus* forests.
*. *L. peloponnesiaca* Boiss. & Heldr.: 28 (Dim. 4200, 4641). Rocky slopes in sparse *Abies* forests.

- * *L. simplex* (Willd.) DC.: 40 (Dim. 1575), 9 (Dim. 2809), 47 (Dim. 4504). Pastures, roadsides, openings in *Abies* forests.
- L. vulgaris* Miller: (Gan. 1940: 31).
- * *Odontites verna* (Bellardi) Dumort. subsp. *serotina* (Dumort.) Corb.: 8 (Dim. 233), 10 (Dim. 1999), 12 (Dim. 4375). Roadsides.
- Parentucellia latifolia* (L.) Caruel: 16 (Dim. & Chr. 2380), 29 (Dim. 2040). Pastures, rocky places on limestone.
- . *Pedicularis graeca* Bunge: 9 (Dim. 99, 727), 15 (Dim. 2308). Stony & rocky slopes, pastures.
- *Rhinanthus pubescens* (Sterneck) Soó: 15 (Dim. 1670), 27 (Dim. 2895, 2902). Pastures, stony places.
- Scrophularia canina* L. subsp. *bicolor* (Sm.) W. Greuter: 28 (Dim. 1125), 31 (Dim. 2521). Pastures, screes, roadsides.
- . *S. laciniata* Waldst. & Kit.: 9 (Dim. & Chr. 2320), 28 (Dim. & Georg. 120), 15 (Dim. 1664). Rocks, screes, stony places.
- S. scopolii* Hoppe: 42 (Dim. 2610), 22 (Dim. 2934). Torrent banks, forest clearings, stony slopes.
- * *Verbascum banaticum* Schrader: 6 (Dim. 1810). *Abies* forests.
- * *V. blattaria* L.: 11 (Dim. 4376). Roadsides.
- V. densiflorum* Bertol.: (Gan. 1940: 31).
- *V. epixanthinum* Boiss. & Heldr.: (Halácsy 1902: 379).
- * *V. graecum* Heldr. & Sart.: 6 (Dim. 4336). Roadsides.
- * *V. guicciardii* Heldr.: 10 (Dim. 642), 16 (Dim. 1309). Rocky places, roadsides.
- V. longifolium* Ten.: 9 (Dim. 4340), 31 (Dim. 1396), 27 (Dim. 2891). Pastures, stony slopes.
- V. mallophorum* Boiss. & Heldr.: 29 (Dim. 180), 15 (Dim. 1021), 9 (Dim. 4339). Pastures, forest clearings.
- * *V. phlomoides* L.: 6 (Dim. 1808). Openings in *Abies* forests.
- V. sinuatum* L.: (Gan. 1940: 31).
- . *V. undulatum* Lam.: 16 (Dim. 794, 2120). Rocky places, screes.
- * *Veronica anagallis - aquatica* L.: 39 (Dim. 1508), 7 (Dim. 4337). Wet places in pastures & torrents.
- V. arvensis* L.: 7 (Dim. 102), 47 (Dim. 4480). Stony slopes, pastures.
- V. beccabunga* L.: 49 (Dim. 223), 9 (Dim. 679), 16 (Dim. 4306). Wet places by brooklets & springs.
- *V. chamaedrys* L. subsp. *chamaedryoides* (Bory & Chaub.) M. A. Fischer: 13 (Dim. 538), 12 (Dim. 655), 18 (Dim. 4389). Forests with *Abies* or *Castanea*, pastures, roadsides.
- *V. erinoides* Boiss. & Spruner (Strid & Tan 1991: 216).
- * *V. hederifolia* L.: 47 (Dim. 4490). Pastures.
- V. jacquinii* Baumg.: 15 (Dim. 697), 50 (Dim. 938, 2403), 28 (Dim. 1177). Quarry places, screes, pastures.
- *V. orsiniana* Ten. subsp. *teucroides* (Boiss. & Heldr.) M. A. Fischer (Halácsy 1902: 427).
- V. orsiniana* Ten. subsp. *orsiniana*: 15 (Dim. 1051), 27 (Dim. 1245, 2773), 25 (Dim. 3042). Quarry places, screes, pastures, rocks.
- * *V. persica* Poiret: 7 (Dim. 2009). Openings in *Pinus* forests.
- V. serpyllifolia* L.: 7 (Dim. 306). Wet places.
- *V. thymifolia* Sm.: 28 (Dim. 2078), 30 (Dim. 2181), 27 (Dim. 4034). Pastures, rocky

places, screes.

V. triloba (Opiz) Wiesbaur: 52 (Dim. 429), 16 (Dim. 448), 31 (Dim. 1378). Stony places, pastures.

V. verna L.: 15 (Dim. 1034), 49 (Dim. 4470). Pastures, stony places, screes.

Solanaceae

Atropa bella-donna L.: (Voliotis 1976: 42).

* *Hyoscyamus niger* L.: 16 (Dim. 2796). Roadsides.

Solanum dulcamara L.: 54 (Dim. 326), 7 (Dim. 1626). Torrent banks, hedges, damp places in forests.

S. nigrum L.: (Gan. 1940: 31).

Tamaricaceae

* *Tamarix smyrnensis* Bunge: 44 (Dim. 4663). River beds.

Theligonaceae

* *Theligonum cynocrambe* L.: 39 (Dim. 1588). Wet places along roadsides.

Thymelaeaceae

* *Daphne laureola* L. subsp. *laureola*: 41 (Dim. 2594). Slopes with sparse *Abies* forests.

D. oleoides Schreber: 30 (Dim. 132), 28 (Dim. 1155, 2785), 34 (Dim. 4759). Rocky slopes, pastures, sparse *Abies* forests.

Tiliaceae

* *Tilia platyphyllos* Scop. subsp. *platyphyllos*: 5 (Dim. 295), 16 (Dim. 1560). Castanea forests, rocky slopes, torrent banks.

Ulmaceae

* *Celtis australis* L.: 52 (Dim. 4361). Scrubs with *Quercus coccifera* & *Carpinus orientalis*.

Ulmus minor Miller: 54 (Dim. 253), 42 (Dim. 1887), 12 (Dim. 2236), 8 (Dim. 4397). Margins of deciduous forests, hedges, abandoned fields.

Urticaceae

* *Parietaria officinalis* L.: 54 (Dim. 242). Torrent banks.

Urtica dioica L.: 54 (Dim. 248), 16 (Dim. 769), 7 (Dim. 917), 42 (Dim. 2600). Pastures, screes, forest clearings, *Pinus* forests.

Valerianaceae

* *Centranthus ruber* (L.) DC. subsp. *sibthorpii* (Heldr. & Sart. ex Boiss.) Hayek: 32 (Dim. 1870), 9 (Dim. 4342). Roadsides, screes.

* *Valeriana italica* Lam.: 16 (Dim. 611, 2121). Rocky slopes.

V. tuberosa L.: 15 (Dim. 1076, 2021), 27 (Dim. 1236). Rocky slopes, pastures.

Valerianella coronata (L.) DC.: 16 (Dim. 834), 28 (Dim. 1154), 31 (Dim. 2412). Rocky places, pastures, torrent banks.

V. dentata (L.) Pollich: 49 (Dim. 4748). Scrubs.

V. locusta (L.) Laterrade: 9 (Dim. 712, 859), 30 (Dim. 4560). Pastures, rocky places.

* *V. turgida* (Steven) Betcke: 16 (Dim. 796, 2097), 15 (Dim. 1074). Rocky places.

Verbenaceae

* *Verbena officinalis* L.: 7 (Dim. 995), 16 (Dim. 1275), 12 (Dim. 4059). Roadsides, pastures.

* *Vitex agnus - castus* L.: 12 (Dim. 4374). Roadsides.

Violaceae

Viola aetolica Boiss. & Heldr.: 9 (Dim. 529, 581), 30 (Dim. 2170, 4107). Stony pastures, *Juniperus* scrubs, sparse *Abies* forests.

V. alba Besser subsp. *thessala* (Boiss. & Spruner) Hayek: 8 (Dim. 442), 10 (Dim. 553 A). Margins of *Abies* forests, pastures.

- ° *V. graeca* (W. Becker) Halácsy: 27 (Dim. 1250), 30 (Dim. 2093), 15 (Dim. 2337). Pastures, screes, rocky places.
- V. kitaibeliana* Schultes: 15 (Dim. 1038), 47 (Dim. 4475). Forest clearings, pastures.
- V. odorata* L.: 54 (Dim. 239), 6 (Dim. 494), 7 (Dim. 520), 47 (Dim. 4503). Forest margins, torrent banks, pastures, Juniperus scrubs.
- V. parvula* Tineo: (Strid & Tan 1991: 637).
- ° *V. phitosiana* Erben: 9 (Dim. 842), 47 (Dim. 4510), 28 (Dim. 4642). Pastures, openings in Abies forests.
- V. reichenbachiana* Jordan: 12 (Dim. 537), 42 (Dim. 1609). Forests with Abies or Castanea.
- * *V. riviniana* Reichenb.: 9 (Dim. 663). Roadsides within pastures.

MONOCOTYLEDONES

Alismataceae

- * *Alisma plantago-aquatica* L.: 44 (Dim. 4665). By swamps.

Amaryllidaceae

- Sternbergia colchiciflora* Waldst. & Kit.: 29 (Dim. 2074), 31 (Dim. 2182), 25 (Dim. 2492, 2945). Pastures.

- S. lutea* (L.) Ker-Gawler: 16 (Dim. 379). Rocky places.

Araceae

- Arum italicum* Miller.: 15 (Dim. 2295), 24 (Dim. 4229), 47 (Dim. 4404, 4409). Sparse Abies forests, rocky places in pastures.

Cyperaceae

- Carex caryophyllea* Latourr.: 31 (Dim. 1385 A). Pastures, scrubs.

- * *C. distachya* Desf.: 8 (Dim. 4846). Scrubs on alluvial soils.

- * *C. distans* L.: 16 (Dim. 754). Wet places by torrents.

- * *C. divisa* Hudson: 16 (Dim. 756). Wet places in pastures.

- C. echinata* Murray: (Strid & Tan 1991: 847).

- C. flacca* Schreber: 13 (Dim. 578), 29 (Dim. 2030). Damp pastures.

- C. halleriana* Asso: 47 (Dim. 507), 29 (Dim. 2031). Damp pastures, scrubs, openings in Abies forests.

- C. hirta* L.: 7 (Dim. 669, 933), 31 (Dim. 1402). Damp places.

- * *C. muricata* L.: 16 (Dim. 4845). Quarry places.

- C. nigra* (L.) Reichard: (Strid & Tan 1991: 862).

- * *C. otrubae* Podp.: 9 (Dim. 291), 16 (Dim. 755), 31 (Dim. 1371). Torrent banks, wet places in pastures.

- C. ovalis* Good.: (Strid & Tan 1991: 847).

- C. paniculata* L.: 24 (Dim. 4290). Rivulets watershed.

- * *C. pendula* Hudson: 9 (Dim. 292). Torrent banks.

- * *C. polyphylla* Kar. & Kir.: 9 (Dim. 287, 856). Torrent banks.

- * *C. remota* L.: 9 (Dim. 287). Torrent banks.

- C. serotina* Mérat: 31 (Dim. 1385 B), 30 (Dim. 4217). Spring in pastures, margins of rivulets.

- * *Cyperus longus* L.: 11 (Dim. 2003, 4371), 13 (Dim. 4065). Wet places in pastures, by pools.

- * *Scirpus holoschoenus* L.: 7 (Dim. 64, 932); 16 (Dim. 1284). Pastures, pools in pastures.

- * *S. setaceus* L.: 7 (Dim. 4710). Wet places through roadsides.

Dioscoraceae

Tamus communis L.: 16 (Dim. 2118, 4391). Rivulet beds, ravines.

Iridaceae

* *Crocus chrysanthus* (Herbert) Herbert: 6 (Dim. 387), 33 (Dim. 474). Pastures, Pinus forests.

. *C. veluchensis* Herbert: 34 (Dim. 386), 16 (Dim. 455), 30 (Dim. 477). Pastures, stony slopes.

* *Hermodactylus tuberosus* (L.) Miller: 52 (Dim. 430), 16 (Dim. 456). Rocky places, forests with *Juniperus foetidissima*.

* *Iris germanica* L.: 16 (Dim. 2125, 2855). Rocky places.

* *Romulea bulbocodium* (L.) Sebastiani & Mauri: 7 (Dim. 490), 13 (Dim. 2022). Openings in Pinus forests, wet places in pastures.

Juncaceae

* *Juncus bufonius* L.: 10 (Dim. 1463), 8 (Dim. 4614). Wet places.

* *J. conglomeratus* L.: 16 (Dim. 1285). Pastures.

* *J. effusus* L.: 9 (Dim. 288). Wet places.

J. inflexus L.: 9 (Dim. 84), 49 (Dim. 204), 16 (Dim. 1283). Wet pastures, rivulet beds.

J. thomasi Ten.: 7 (Dim. 1477), 9 (Dim. 1629), 24 (Dim. 4232). Wet places in pastures.

Luzula campestris (L.) DC.: 15 (Dim. 696), 9 (Dim. 710), 48 (Dim. 2165). Pastures, rocky places.

L. forsteri (Sm.) DC.: 10 (Dim. 498), 12 (Dim. 570), 6 (Dim. 2057). Abies forests, Castanea stands, wet places in pastures.

L. multiflora (Ehrh.) Lej.: 9 (Dim. 871), 7 (Dim. 904), 31 (Dim. 1390). Pastures, forest openings.

L. spicata (L.) DC.: 9 (Dim. 724), 15 (Dim. 1063), 27 (Dim. 1224). Pastures.

L. sylvatica (Hudson) Gaudin: 15 (Dim. 1641). Sparse Abies forests.

Liliaceae

° *Allium achaium* Boiss. & Orph.: 6 (Dim. 1781), 30 (Dim. 1837), 15 (Dim. 1954). Rocky places, pastures, on limestone.

* *A. amethystinum* Tausch: 16 (Dim. 1570, 2795, 4835). Gravelly & rocky places.

A. ampeloprasum L.: (Gan. 1940: 34).

A. cupani Rafin. subsp. *cupani*: (Strid & Tan 1991: 707).

A. dentiferum Webb & Berthelot: (Brullo, Pavone & Salmeri 1991: 786).

* *A. flavum* L. subsp. *tauricum* (Besser ex Reichenb.) K. Richter: 29 (Dim. 1727), 42 (Dim. 1921). Stony pastures, rocky places.

* *A. guttatum* Steven. subsp. *sardoum* (Moris) Stearn: 16 (Dim. 46), 9 (Dim. 4355). Rocky places, pastures.

* *A. moschatum* L.: 29 (Dim. 1755), 28 (Dim. 1991, 4202). Pastures.

. *A. phthioticum* Boiss. & Heldr.: 27 (Dim. 1709), 25 (2488, 4182). Pastures, rocky places, on limestone.

A. schoenoprasum L.: (Strid & Tan 1991: 704).

* *A. scorodoprasum* L. subsp. *rotundum* (L.) Stearn: 16 (Dim. 1539). Wet places in pastures.

A. sphaerocephalon L. susp. *sphaerocephalon*: 31 (Dim. 1977), 50 (Dim. 4751). Rocky places.

A. vineale L.: 15 (Dim. 1650), 27 (Dim. 1710, 2889), 30 (Dim. 4120). Pastures, rocky places.

Asparagus acutifolius L.: 28 (Dim. 17), 54 (Dim. 252). Torrent banks, conif. forests, macchie.

- * *Asphodeline lutea* (L.) Reichenb.: 16 (Dim. 377, 2110). Quarry places, screes.
- * *Asphodelus aestivus* Brot.: 16 (Dim. 776, 4451). Pastures.
- Colchicum boissieri* Orph.: 7 (Dim. 384), 18 (Dim. 4390). Pastures.
- ° *C. graecum* K. Persson: 55 (Dim. 263), 15 (Dim. 1667), 42 (Dim. 1923). Stony & rocky pastures, abandoned fields, Pinus forests.
- * *C. triphyllum* G. Kunze: 28 (Dim. 385, 435). Roadsides, pastures.
- ° *Fritillaria mutabilis* Kamari: 42 (Dim. 2660), 30 (Dim. 4544), 15 (Dim. 2334). Scrubs with *Juniperus oxycedrus*, rocky slopes.
- ° *F. thessala* (Boiss.) Kamari subsp. *thessala*: 48 (Dim. 637), 42 (Dim. 2562), 24 (Dim. 4543). Pastures, clearing in *Abies* forests, *Juniperus* scrubs.
- Gagea fistulosa* Ker-Gawler: 7 (Dim. 409), 30 (Dim. 737). Pastures.
- G. granatelli* (Parl.) Parl.: 31 (Dim. 431, 624), 6 (Dim. 492). Pastures, forest openings.
- G. minima* (L.) Ker-Gawler.: (Strid & Tan 1991: 663).
- G. pusilla* (F. W. Schmidt) Schultes & Schultes fil.: 7 (Dim. 403), 29 (Dim. 475). Pastures.
- Lilium chalcedonicum* L.: 42 (Dim. 1902), 12 (Dim. 4063), 24 (Dim. 4264). Somewhat damp, rocky, semi-shaded places.
- L. martagon* L.: 15 (Dim. 1652), 42 (Dim. 1901). Stands with *Pteridium aquillinum*, damp pastures, rocky slopes.
- * *Muscari comosum* (L.) Miller: 11 (Dim. 651), 16 (Dim. 762, 2138, 2292). Pastures, wet places, *Abies* forests.
- M. neglectum* Guss.: 13 (Dim. 576), 7 (Dim. 673), 15 (Dim. 695), 9 (Dim. 700). Pastures, rocky places, Pinus forests, *Castanea* stands.
- ° *Ornithogalum fimbriatum* Willd. subsp. *gracilipes* (Zahar.) Landstroem: 15 (Dim. 688), 16 (Dim. 763, 2134). Stony slopes, rocky places, Stands with *J. foetidissima*.
- O. montanum* Ten.: 52 (Dim. 483), 42 (Dim. 2564), 47 (Dim. 4483). Pastures, stony places.
- O. oligophyllum* E. D. Clarke: 4 (Dim. 493), 30 (Dim. 1256). Pastures.
- * *O. sphaerocarpum* A. Kerner: 16 (Dim. 748), 27 (Dim. 1219), 15 (Dim. 2810). Pastures, slopes, forests with *Juniperus foetidissima*.
- * *Polygonatum multiflorum* (L.) All.: 31 (Dim. 1925), 24 (Dim. 4210). Humus rich rocky soils in mixed forests.
- Ruscus aculeatus* L.: 54 (Dim. 241). Forests, scrubs.
- * *Scilla autumnalis* L.: 1 (Dim. 4697). Pastures.
- S. bifolia* L.: 7 (Dim. 394), 9 (Dim. 530), 30 (Dim. 476). Forest openings, pastures.
- Orchidaceae**
- Anacamptis pyramidalis* (L.) L. C. M. Richard: 29 (Dim. 1200, 1212), 16 (Dim. 2786). Scrubs, pastures, wet places.
- Cephalanthera damasonium* (Miller) Druce: 31 (Dim. 1352), 6 (Dim. 1805), 16 (Dim. 2127). *Abies* forests.
- C. longifolia* (L.) Fritsch.: 10 (Dim. 658). Forest margins.
- C. rubra* (L.) L. C. M. Richard: 16 (Dim. 785), 13 (Dim. 2288). Forests with *Abies* or *Quercus*.
- Cypripedium calceolus* L.: (Halácsy 1904: 153).
- Dactylorhiza iberica* (Willd.) Soó: (Halácsy 1904: 169).
- * *D. saccifera* (Brongn.) Soó: 16 (Dim. & Chr. 2358), 18 (Dim. 4087). Wet places in torrents & along roadsides.
- D. sambucina* (L.) Soó: 13 (Dim. 573), 9 (Dim. 584), 15 (Dim. 2333). Rocky slopes, pastures, *Castanea* forests.

- Epipactis atrorubens* (Hoffm.) Besser: (Halácsy 1904: 156).
E. helleborine (L.) Crantz: 16 (Dim. 1542, 2852), 13 (Dim. 4070). Forests with *Abies* or *Castanea*.
E. palustris (L.) Crantz: 9 (Dim. 4089). Wet places.
 * *Gymnadenia conopsea* (L.) R. Br.: 27 (Dim. 1700), 18 (Dim. 4060), 12 (Dim. 4086). Wet places, by pools, stands with *Pteridium aquilinum*.
 * *Himantoglossum hircinum* (L.) Sprengel: 6 (Dim. 1459). Scrubs with *Juniperus oxycedrus*, edges of *Abies* forests.
Limodorum abortivum (L.) Swartz: 28 (Dim. 1100), 10 (Dim. 2231). Forests, torrent banks.
Listera ovata (L.) R. Br.: 19 (Dim. 2277). Forests.
 * *Neotinea maculata* (Desf.) Stearn: 12 (Dim. 657, 2262). Forests with *Castanea* & *Quercus*.
 * *Neottia nidus-avis* (L.) L. C. M. Richard: 42 (Dim. 1607, 2525). *Abies* forests.
Nigritella nigra (L.) Reichenb. fil.: (Halácsy 1904: 176).
 * *Ophris sphegodes* Miller: 10 (Dim. 495, 540), 12 (Dim. 571). Slopes with *Spartium*, wet places along roadsides.
 * *Orchis laxiflora* Lam. subsp. *laxiflora*: 13 (Dim. 2272), 47 (Dim. 4405). Pastures.
 * *Orchis laxiflora* Lam. subsp. *elegans* (Heuffel) Soó: 6 (Dim. 2224). Pastures.
O. mascula L.: 31 (Dim. 2150), 11 (Dim. 2263), 19 (Dim. 2281). Forests with *Abies* or *Castanea* & *Quercus*.
O. pallens L.: 15 (Dim. & Chr. 2309), 24 (Dim. 4555). Pastures, rocky slopes, edges of *Abies* forests.
 * *O. provincialis* Balbis subsp. *provincialis*: 13 (Dim. 572), 16 (Dim. 614), 29 (Dim. 2144). Forests, rocky places, scrubs.
 * *O. quadripunctata* Cyr.: 16 (Dim. 613, 2140). *Juniperus foetidissima* forests.
Platanthera chlorantha (Custer) Reichenb.: 11 (Dim. 2249). Forests with *Abies* or *Castanea*.
Serapias vomeracea (Burm.) Briq.: (Gan. 1940: 35).
- Poaceae**
Aegilops geniculata Roth: (Gan. 1940: 34).
 * *A. lorentii* Hochst.: 48 (Dim. 1341), 16 (Dim. 1543). Openings in *Abies* forests, Pastures.
 * *A. neglecta* Req.: 16 (Dim. 791). Rocky places.
 * *Agrostis* cf. *castellana* Boiss. & Reuter: 6 (Dim. 1798). Wet places in forest openings.
A. stolonifera L.: (Strid & Tan 1991: 815).
 * *Aira elegantissima* Schur: 7 (Dim. 924), 6 (Dim. 190). *Abies* forests, openings in *Abies* forests.
Alopecurus gerardii Vill.: 9 (Dim. 587), 28 (Dim. 1167). Pastures.
 * *Anthoxanthum odoratum* L.: 31 (Dim. 1411), 6 (Dim. 1467). Pastures.
 * *Arrhenatherum elatius* (L.) P. Beauv.: 42 (Dim. 2624). *Abies* forests.
 * *Avena barbata* Pott: 29 (Dim. 173), 50 (Dim. 346), 12 (Dim. 643). Roadsides, torrent banks, pastures.
 * *A. sterilis* L.: 49 (Dim. 213), 16 (Dim. 4307). Pastures.
 * *Avenula compressa* (Heuffel) W. Sauer & Chmelitschek: 25 (Dim. 2491). Pastures.
Bellardiochloa variegata (Lam.) Kerguélen: (Gan. 1940: 34).
Brachypodium pinnatum (L.) P. Beauv.: 31 (Dim. 1361), 9 (Dim. 1632), 27 (Dim. 1691). Edges of *Abies* forests, pastures.
B. sylvaticum (Hudson) P. Beauv. subsp. *sylvaticum*: 49 (Dim. 166, 225). *Abies* forests.

- * *Briza humilis* Bieb.: 43 (Dim. 1496), 11 (Dim. 2245). Pastures, sparse Abies forests.
- * *Briza maxima* L.: 16 (Dim. 277), 9 (Dim. 2802). Pastures, openings in Abies forests.
- * *B. media* L. subsp. *elatiior* (Sm.) Rohlena: 15 (Dim. 1672), 18 (Dim. 2882). Openings in Abies forests, pastures.
- . *Bromus cappadocicus* Boiss. & Balansa subsp. *lacmonicus* (Hauskn.) P. M. Smith: 31 (Dim. 1373), 50 (Dim. 2391). Rocky places, edges of Abies forests.
- B. erectus* Hudson: (Gan. 1940: 34).
- B. hordeaceus* L. subsp. *molliformis* (Lloyd) Maire Weiller: 7 (Dim. 309), 31 (Dim. 1400). Pastures.
- * *B. japonicus* Thunb.: 16 (Dim. 774), 31 (Dim. 1416). Pastures.
- * *B. lanceolatus* Roth: 9 (Dim. 320). Abies forests.
- * *B. madritensis* L.: 6 (Dim. 1471). Openings in Abies forests.
- * *B. riparius* Rehm. subsp. *macedonicus* (Degen & Doerfler) Soó: 25 (Dim. 4195). Rocky pastures.
- B. riparius* Rehm.: 27 (Dim. 1690), 31 (Dim. 1851). Pastures.
- * *B. scoparius* L.: 16 (Dim. 821). Openings in Abies forests, rocky places.
- B. squarrosus* L.: 50 (Dim. 71), 28 (Dim. 1211). Pastures, torrents.
- B. sterilis* L.: 29 (Dim. 182), 6 (Dim. 992), 15 (Dim. 1062). Roadsides, rocky places, pastures.
- B. tectorum* L.: 16 (Dim. 790), 28 (Dim. 337), 31 (Dim. 1448). Pastures, edges of Abies forests.
- Cynodon dactylon* (L.) Pers: 54 (Dim. 255), 16 (Dim. 4616). Roadsides, abandoned fields, pastures.
- * *Cynosurus cristatus* L.: 7 (Dim. 1479), 24 (Dim. 4233). By pools, wet places.
- C. echinatus* L.: 29 (Dim. 110), 7 (Dim. 310), 31 (Dim. 1358). Pastures, Juniperus scrubs.
- * *C. elegans* Desf.: 7 (Dim. 311), 9 (Dim. 703). Pastures.
- Dactylis glomerata* L. subsp. *glomerata*: 31 (Dim. 1362). Pastures.
- * *D. glomerata* L. subsp. *hispanica* (Roth) Nyman: 6 (Dim. & Chr. 2291), 15 (Dim. 2299), 25 (Dim. 2461). Conif. forests, rocky slopes, pastures.
- Dasypyrum villosum* (L.) Cand.: 48 (Dim. 187), 28 (Dim. 1166), 50 (Dim. 2399). Stony slopes, torrent banks, pastures.
- * *Deschampsia cespitosa* (L.) P. Beauv.: 25 (Dim. 4196), 24 (Dim. 4231). Pastures, slopes.
- * *Desmazeria rigida* (L.) Tutin: 55 (Dim. 256). Roadsides.
- Dichanthium ischaemum* (L.) Roberty: 55 (Dim. 364). Roadsides.
- Echinochloa crus-galli* (L.) Beauv.: 10 (Dim. 2000). Wet places.
- * *Elymus panormitanus* (Parl.) Tzvelev: 42 (Dim. 2628). Torrent banks.
- * *Festuca arundinacea* Schreber: 49 (Dim. 227), 16 (Dim. 1572). Rocky places, sparse Abies forests.
- ° *F. jeanpertia* (St-Yves) Markgraf: 15 (Dim. 1023), 31 (Dim. 1397). Pastures, rocky places.
- F. ovina* L. (Gan. 1940: 32).
- ° *F. polita* (Halácsy) Tzvelev: 31 (Dim. 1439), 27 (Dim. 2757). Pastures, rocky places, on limestone.
- * *F. rubra* L.: 27 (Dim. 1717), 31 (Dim. 1845), 32 (Dim. 1862). Rocky places, pastures.
- F. spectabilis* Jan subsp. *affinis* (Boiss. & Heldr. ex Hackel) Hackel: 27 (Dim. 1724, 2409), 31 (Dim. 2409). Limestone screes.
- F. varia* Haeneke: 31 (Dim. 982, 2438), 28 (Dim. 1187). Stony pastures.

- * *Glyceria cf. plicata* (Fries) Fries: 13 (Dim. 4066). Wet places, pastures.
Helictotrichon aetolicum (Rech. fil.) Holub: 31 (Dim. 1388). Pastures, rocky places.
 * *H. convolutum* (C. Presl) Henrard subsp. *convolutum*: 16 (Dim. 828). Rocky places.
 *° *H. convolutum* (C. Presl) Henrard subsp. *heldreichii* (Parl.) Gervais: 16 (Dim. 836, 1318). Rocky places.
H. pubescens (Hudson) Pilger: (Strid & Tan 1991: 798).
 * *Holcus lanatus* L.: 49 (Dim. 219, 1530), 9 (Dim. 868). Wet places, openings in *Abies* forests.
 * *Hordeum bulbosum* L.: 16 (Dim. 1289), 31 (Dim. 1399). Pastures, roadsides.
 * *H. murrinum* L. subsp. *leporinum* (Link) Arcangeli: 48 (Dim. 2152). Pastures.
H. vulgare L.: 40 (Dim. 1605). Torrent banks.
 * *Hyparrhenia hirta* (L.) Stapf: 55 (Dim. 221). Roadsides.
Koeleria cristata (L.) Pers.: (Gan. 1940: 34).
K. lobata (Bieb.) Roemer & Schultes: 9 (Dim. 999), 28 (Dim. 1213). Rocky places, pastures.
 * *K. nitidula* Velen.: 26 (Dim. 2962). Pastures.
 * *Lolium perenne* L.: 29 (Dim. 345), 31 (Dim. 1377). Pastures.
Melica ciliata L.: 16 (Dim. 70), 49 (Dim. 224), 9 (Dim. 997, 1006). Rocky places, pastures, roadsides.
 * *M. uniflora* Retz.: 54 (Dim. 240), 6 (Dim. 1816), 42 (Dim. 2682). Torrent banks, pastures.
 * *Milium vernale* Bieb.: 9 (Dim. 717). Wet places in pastures.
Nardus stricta L.: 26 (Dim. 2924). Pastures.
Phleum alpinum L.: 9 (Dim. 702), 31 (Dim. 1410). Pastures.
P. montanum C. Koch: 27 (Dim. 1253), 16 (Dim. 2367, 2856). Pastures, rocky places.
P. phleoides (L.) Karsten: (Gan. 1940: 34).
 * *P. pratense* L. subsp. *bertolonii* (DC.) Bornm.: 28 (Dim. 338), 6 (Dim. 1806). Pastures.
 * *Phragmites australis* (Cav.) Trin.: 8 (Dim. 302, 4392). Wet places.
 * *Piptatherum miliaceum* (L.) Cosson: 49 (Dim. 186). Roadsides.
 * *Poa annua* L.: 47 (Dim. 513). Wet places.
 * *P. bulbosa* L. subsp. *pseudoconcinna* (Schur) Domin: 29 (Dim. 344), 50 (Dim. 351), 16 (Dim. 793). Pastures.
P. cenisia All.: 31 (Dim. 1861), 32 (Dim. 1863). Pastures, rocky places.
 * *P. compressa* L.: 27 (Dim. 1222). Pastures.
 . *P. macedonica* (Acht.) Stoeva & Kozuharon: (Strid & Tan 1991: 774).
P. nemoralis L.: 9 (Dim. 867), 31 (Dim. 1413), 18 (Dim. 1694). Wet places, pastures.
P. pratensis L.: 49 (Dim. 2147). Pastures.
 . *P. thessala* Boiss. & Orph.: 30 (Dim. 1833), 42 (Dim. 2571, 2680). Rocky & stony places, pastures.
 * *P. timoleonis* Heldr.: 27 (Dim. 2736), 31 (Dim. 1435), 25 (Dim. 2475). Pastures.
 ° *P. trichophylla* Heldr. & Sart.: (Strid & Tan 1991: 770).
 * *P. trivialis* L. subsp. *sylvicola* (Guss.) H. Lindb. fil.: 7 (Dim. 930), 43 (Dim. 1337), 31 (Dim. 1412). Pastures.
 * *Polypogon monspeliensis* (L.) Desf.: 39 (Dim. 1506). Wet places.
 * *Psilurus incurvus* (Gouan) Schinz & Thell.: 8 (Dim. 4739). Scrubs with *Juniperus oxucedrus*.
Secale montanum Guss.: 50 (Dim. 348), 31 (Dim. 2455), 42 (Dim. 2626), 30 (Dim. 4141). Pastures, torrent banks, stony places.

- * *Sesleria* cf. *bielzii* Schur: 27 (Dim. 1223). Pastures.
 ° *S. vaginalis* Boiss. & Orph.: (Strid & Tan 1991: 781).
 * *S. wettsteinii* Doerfler & Hayek: 50 (Dim. 945), 15 (Dim. 2314). Pastures, torrent banks.
 * *Setaria pumila* (Poiret) Schultes: 55 (Dim. 154). Wet places along roadsides.
 * *S. viridis* (L.) Beauv.: 55 (Dim. 153). Roadsides.
 * *Sorghum halepense* (L.) Pers.: 55 (Dim. 155). Roadsides.
 * *Stipa bromoides* (L.) Doerfler: 29 (Dim. 181). Roadsides within Abies forests.
 * *S. calamagrostis* (L.) Wahlenb.: 9 (Dim. 1633). Roadsides.
 * *S.* cf. *epilosa* Martinovsky: 16 (Dim. 839), 29 (Dim. 4090). Pastures, rocky places.
S. pennata L. subsp. *pulcherrima* (C. Koch) Freitag: 16 (Dim. 383, 4844). Rocky & stony places, screes.
 * *Taeniatherum caput-medusae* (L.) Nevski: 16 (Dim. 792). Sparse Abies forests.
Trisetum flavescens (L.) P. Beauv. subsp. *splendens* (C. Presl) Arcangeli: 9 (Dim. 1635), 27 (Dim. 1718), 30 (Dim. 1834). Pastures.
 . *T. flavescens* (L.) P. Beauv. subsp. *tenue* (Hackel ex form.) Strid: 31 (Dim. 1406), 24 (Dim. 4291). Pastures.

Typhaceae

- * *Typha latifolia* L.: 9 (Dim. 2790), 13 (Dim. 4690, 4064). By pools.

Discussion and conclusions

Timfristos mountain is of great phytogeographical interest because, due to its geographical position, both northern Balkan elements and southern Mediterranean ones meet here.

The overall number of vascular plants comprising the flora of Timfristos mountain comes to 1139 taxa, of which 14 are *Pteridophyta* and 1125 are *Spermatophyta* (Table 1). Except from the above mentioned taxa in the list, 9 cultivated taxa and 1 hybrid are included which are not numbered. 728 taxa are already known from bibliographical references. The authors observed or collected 1002 taxa. 411 of these taxa are reported for the first time as occurring in the Timfristos area. 137 literature records have not yet been confirmed, nor definitely rejected. Further collecting and the revision of the corresponding specimens will hopefully establish their status in the future.

Table 1. Flora composition of Mount Timfristos.

Systematic unit	Families	Genera	Species	Subspecies	Species + Subspecies	Percentage
<i>Pteridophyta</i>	3	10	13	1	14	1.24
<i>Gymnospermae</i>	4	5	5	4	9	.79
<i>Dicotyledonae</i>	73	344	754	157	911	79.91
<i>Monocotyledonae</i>	11	88	178	27	205	18.06
Total	91	447	950	189	1139	100

The families *Asteraceae*, *Poaceae*, *Fabaceae*, *Caryophyllaceae*, and *Labiatae* consist in total of 485 taxa (42,5%) and each of them includes more than 50 taxa. These families of Timfristos flora are the richest in taxa, furthermore the same situation also occurs in the Greek flora.

From the 1139 taxa, 939 are widely spread. 111 taxa are Balkan endemics, 25 of which are new records for Timfristos mountain. 89 taxa are Greek endemics, of which the

Centaurea princeps and *Thymus rechingeri* subsp. *macrocalyx* are endemic to Timfristos. The following 11 Greek endemic taxa are also new records for the area studied: *Helictotrichon convolutum* subsp. *heldreichii*, *Digitalis laevigata* subsp. *graeca*, *Petrorhagia fasciculata*, *Arenaria guicciardii*, *Hieracium epirence*, *Cirsium mairei*, *Heliotropium halacsy*, *Trigonella graeca*, *Genista millii*, *Erysimum graecum*, *Thlaspi bulbosum*.

On Mt Timfristos the Balkan and Greek endemic taxa occur in roughly equal numbers. However, in the comparison of the flora of Timfristos with the flora of other Greek mountains lying northwards and southwards (Dimopoulos & Georgiadis 1992, Karagianakidou 1991, Pavlidis 1982, Strid 1986 & 1993, Strid & Tan 1991, Voliotis 1988), it can be observed that on mountains north of Timfristos the number of Balkan endemic taxa progressively increases, while the number of Greek endemic taxa decreases. The opposite occurs on mountains situated south of Timfristos.

Most Balkan and Greek endemic taxa exist mainly on stony and rocky limestone habitats and also in areas that are over 1100 m in altitude.

Most taxa of this area occur on limestone and on flysch. However a fair number (> 80), for example: *Juniperus foetidissima*, *Taxus baccata*, *Minuartia stellata*, *Centaurea princeps*, *Myosotis alpestris*, *Campanula versicolor*, *Acer heldreichii*, *Inula verbascifolia* subsp. *parnassica*, etc., are established exclusively on limestone whereas a few others such as: *Castanea sativa*, *Pinus nigra* subsp. *pallasiana*, etc., only occur on flysch.

Finally, the comparison of the Timfristos flora to the list of rare, threatened and endemic plants of Greece published by IUCN (1982) is of interest. Having in mind the recent data of the distribution of these species, 13 taxa, i.e. *Seseli parnassicum*, *Cirsium mairei*, *Scorzonera doriae*, *S. purpurea* subsp. *peristerica*, *Cephalaria tenuiloba*, *Silene conica* subsp. *subconica*, *Scutellaria rupestris* subsp. *adenotricha*, *Thlaspi bulbosum*, *Genista millii*, *Allium phthioticum*, *Poa trichophylla*, *Asperula oetea*, and *Galium degenii* are considered Rare; 5 taxa having been considered Rare, i.e. *Anthemis cretica* subsp. *columnae*, *Centaurea spruneri*, *Scilla bifolia*, *Erodium guicciardii*, and *Linum aroanicum* are found to be neither rare nor threatened; 2 taxa, i.e. *Centaurea princeps* (Timfristos endemic) and *Geranium subcaulescens*, considered Endangered, are becoming Vulnerable and neither rare nor threatened respectively, while *Barbarea sicula* considered Vulnerable is becoming Rare. The majority of the above taxa are Greek and Balkan endemics.

Acknowledgements

Thanks are due to Prof. D. Phitos (Patras) for constructive criticism of the manuscript, and to Miss S. Coles for linguistic corrections.

Thanks are also due to Dr. P. Hartvig (Copenhagen), Prof. G. Kamari (Patras), Dr. Th. Raus (Berlin), Dr. A. J. Richards (Newcastle-upon-Tyne), and Prof. H. Scholz (Berlin) for their help in the identification and confirmation of *Carex*, *Minuartia*, *Verbascum*, *Taraxacum*, and *Poaceae* species respectively.

References

- Barbero, M. & Quezel, P. 1976: Les groupements forestiers de Grèce Centro-Méridionale. — *Ecologia Mediterranea* 2: 1-86.
- Boissier, E. 1867: *Flora Orientalis*. 1. — Genevae.
- Bornovas, J. & Rondogianni, T. 1983: Geological map of Greece. — I.G.M.E. (Athens).
- Brullo, S., Pavone, P. & Salmeri, C. 1991: Cytotaxonomical notes on *Allium dentiferum* Webb & Berthelot, an unknown species of the Mediterranean flora. — *Bot. Chron.* 10: 785-796.

- Dimopoulos, P. & Georgiadis, T. 1992: Floristic and Phytogeographical analysis of Mount Killini (NE Peloponnisos, Greece). — *Phyton* (Horn, Austria) **32**(2): 283-305.
- Ganiatsas, K. 1940: Contribution for the knowledge of the flora of Timfristos mountain. — *Epist. Epet. Shol. Fis. Math. Epist. Panepist. Thessalonikis* **6**: 17-35. (in Greek).
- Greuter, W., Burdet, H. M. & Long, G. 1984-1989: *Med-Checklist*. **1, 3, 4**. — Genève.
- Halácsy, E. de 1901-1904: *Conspectus Florae Graecae. I-III*. — Lipsiae.
- IUCN Threatened Plants Committee Secretariat 1982: The rare, threatened and endemic plants of Greece. — *Ann. Musei Goulandris* **5**: 69-105.
- Karagiannakidou, V. 1991: Analysis of the Flora of Mount Menikion, NE Greece. — *Saussurea* **22**: 33-42.
- Mountakis, D. 1985: *Geology of Greece*. — Thessaloniki (in Greek).
- Nardi, E. 1991: The genus *Aristolochia* L. (*Aristolochiaceae*) in Greece. — *Webbia* **45**(1): 31-69.
- Pavlidis, G. 1982: *Geobotanical study of the mountain unit of Vertiskos. 1. Flora and vegetation*. — Thessaloniki.
- Phitos, D. 1960: Phytogeographical observations on the mountain range Timfristos-Oxia. — *Das. Chron.* **25**: 1099-1105 (in Greek).
- Polunin, O. 1980: *Flowers of Greece and the Balkans*. — Oxford Univ. Press.
- Skrubis, B. & Pinatsis, C. 1987: *Contribution to the study of aromatic and medicinal flora of Evrytania*. — Thessaloniki (in Greek).
- Strid, A. (ed.) 1986: *Mountain Flora of Greece. 1*. — Cambridge Univ. Press.
- 1993: *Phytogeographical aspects of the Greek mountain flora*. — *Fragmenta floristica et Geobotanica supplementum 2 Pars 2*: 411-433. — Krakow.
- & Kit Tan (ed.) 1991: *Mountain Flora of Greece. 2*. — Edinburgh Univ. Press.
- Tutin, T. G. & al. (ed.) 1964-1980: *Flora Europaea. I-V*. — Cambridge.
- Voliotis, D. 1976: Die Geholzvegetation und die Vegetationszonierung des Gebirgszuges Tymfristos-Oeta-Parnassos(Griechenland). — *Candollea* **31**: 37-51.
- 1988: The flora of Mount Pinovon in N.Greece. — *Bot. Chron.* **8**(1-2): 5-43 (in Greek).

Address of the authors:

Dipl. For. G. Dimitrellos & Ass. Prof. D. Christodoulakis, Botanical Institute,
University of Patras, GR-265 00 Patras, Greece.