

D. A. Samaras, E. Eleftheriadou, K. Theodoropoulos & G. Karetzos

Contribution to the flora of Mt Goulinas (Sterea Ellas, Greece)

Abstract

Samaras, D. A., Eleftheriadou, E., Theodoropoulos K. & Karetzos, G.: Contribution to the flora of Mt Goulinas (Sterea Ellas, Greece). — Fl. Medit. 27: 241-266. 2017. — ISSN: 1120-4052 printed, 2240-4538 online.

Mt Goulinas is located in the NW part of Sterea Ellas in south-central Greece. A first floristic inventory of the mountain is presented based on field work and literature records. The known vascular flora of the study area consists of 487 taxa out of which 305 taxa are reported for the first time. Among these *Euphorbia phymatosperma* subsp. *cernua* and *Elymus caninus* are new to Sterea Ellas.

Key words: vascular plants, floristic inventory, south-central Greece.

Introduction

Over the last decades an intensive floristic research carried out in the mountains of Sterea Ellas in south-central Greece (Dimopoulos & al. 2013). Despite that big effort, the botanical exploration has been focused almost entirely on the high mountains, leaving outside extensive coastal, lowland and lower mountain areas. Mt Goulinas is one of these low mountains, with an elevation of less than 1500 m a.s.l., that has been “floristically ignored”. Although Mt Goulinas presents a phytogeographical interest due to its geographical position and habitat richness, the only published floristic study of the area is that of Willing & Willing (2006, 2008). Two more studies of the vegetation and phytogeography of the mountains of Sterea Ellas, including Mt Goulinas, have been published by Barbéro & Quézel (1976) and Phitos (1960). A few records of Orchids have been published by Künkele (1983), Hölzinger & al. (1985) and Tsiftsis & Antonopoulos (2017).

This study tries to fill the gap in knowledge of the incompletely explored flora of Mt Goulinas by presenting a floristic catalogue of all vascular plant records of the first author together with literature records.

Materials and methods

Study area – Mt Goulinas is located in south-central Greece (Sterea Ellas), in the west part of Fthiotida prefecture. The mountain lies between $38^{\circ} 49' 20''$ and $38^{\circ} 56' 32''$ N of latitude and $21^{\circ} 57' 26''$ and $22^{\circ} 12' 05''$ E of longitude, and covers an area of 16,210 ha that ranges from 100 to 1459 m in elevation (Fig. 1). The study area is restricted among the rivers Sperchios, Inachos and Roustianitis. The dominant geological formation is flysch (consisted mainly of sandstone), while limestones and scree slope deposits occur, to a small extent, in the central part of the mountain, close to the highest summit (Kallergis & al. 1970). The climate is Mediterranean with wet, mild winters and dry, hot summers. According to Köppen climatic classification, the lower elevations belong to the Csa type, while the higher to the Csb (Samaras & al. 2008).

The most abundant vegetation type in the study area is the deciduous oak forest and scrub, dominated by *Quercus pubescens* in the lower elevations and *Q. frainetto* in the middle and higher elevations. Other deciduous trees like *Q. petraea* subsp. *polycarpa*, *Castanea sativa* and *Ostrya carpinifolia* can be found locally on north facing slopes in clumps or in mixture with *Q. frainetto*. In the higher elevations, above the oak forests, on north and north-east facing slopes can be found the Greek fir (*Abies cephalonica*) forest. In the highest elevations, above the timberline, forest fires, overgrazing and illegal logging

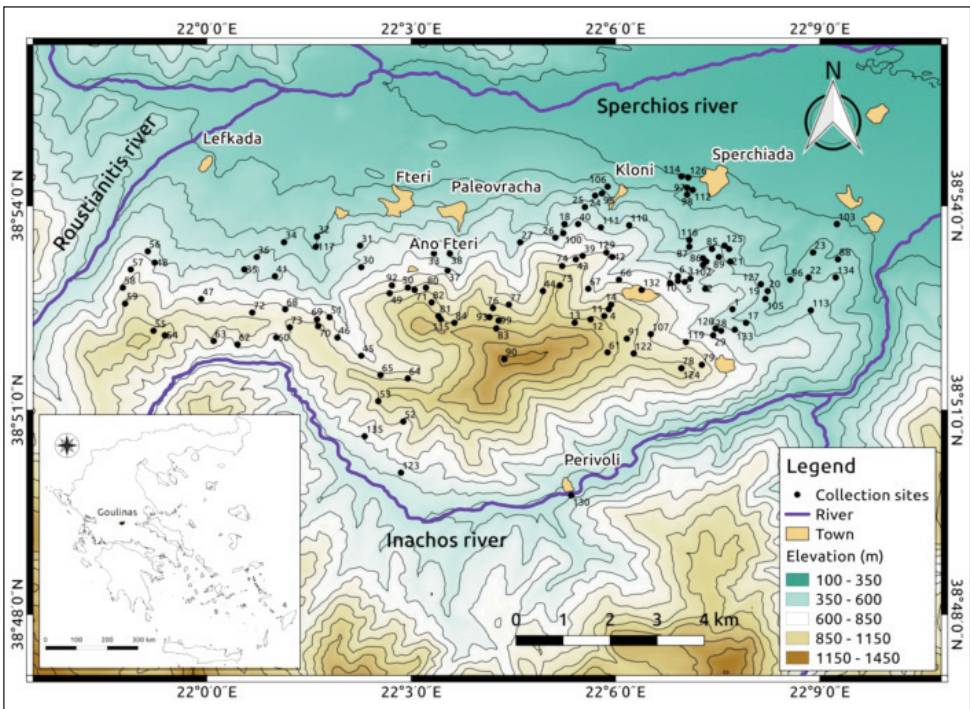


Fig. 1. Map of the study area and collection localities.

have lead to degradation and the replacement of forests by prickly juniper shrublands and anthropogenic, montane, dry grasslands. Extensive evergreen scrub vegetation (pseudo-macchie) dominated by *Q. coccifera* occur in the lowlands and foothills of Mt Goulinas mainly in the eastern part of the study area. Along streams and rivers the riparian vegetation consists mainly of the tree species *Platanus orientalis*, *Salix alba*, *Populus alba* and *Alnus glutinosa* and the shrubs *Nerium oleander* and *Vitex agnus-castus*.

Data collection and analysis – The floristic catalogue is based on collections and field observations carried out by the first author during spring, summer and autumn of 2002-2003 and 2005-2007. Published records are also included in the catalogue. Plant specimens that were collected in the field are stored in the herbarium of the Laboratory of Forest Botany-Geobotany, in the Aristotle University of Thessaloniki, Greece (TAUF). Plant identification was based on the main national and European Floras (Tutin & al. 1968-1980, 1993; Strid 1986; Strid & Tan 1991, 1997, 2002) and selected taxonomic literature (Zohary & Heller 1984; Krendl 1986-1987; Boyce 1988, 1994; Zielinski 1990; Christensen 1992; Baumann & al. 2006). The nomenclature mainly follows Dimopoulos & al. (2013). Accepted names are set in boldface italics in the floristic catalogue. Families, genera, species and subspecies are arranged alphabetically within the four main taxonomic groups: *Pteridophyta*, *Gymnospermae*, *Dicotyledoneae* and *Monocotyledoneae*. Life-form categories of taxa are coded according to Raunkiaer's classification system as was modified by Dimopoulos & al. (2013). Chorological types of taxa are based on the system established for the checklist of vascular plants of Greece (Dimopoulos & al. 2013).

Collection localities – Collection sites (Fig. 1) are coded with numbers (locality codes). The locality codes of all specimens collected in the field are given in the floristic catalogue, in boldface, before the collection number. Information about the date of collection, the exact coordinates, the altitude and the habitat of the site is given below:

- 1: 38° 52' 29" / 22° 07' 43" – 570 m a.s.l. – 5/1/2002 – Forest of *Quercus pubescens*
- 2: 38° 52' 47" / 22° 07' 19" – 610 m a.s.l. – 5/4/2002 – Forest of *Q. frainetto*
- 3: 38° 52' 56" / 22° 07' 06" – 640 m a.s.l. – 5/7-27/2002, 7/10/2002 – Mixed forest of *Q. frainetto*-*Q. pubescens*
- 4: 38° 52' 29" / 22° 05' 54" – 990 m a.s.l. – 7/9/2002 – Forest of *Abies cephalonica*
- 5: 38° 52' 53" / 22° 07' 01" – 650 m a.s.l. – 7/11/2002 – Forest of *Q. frainetto*
- 6: 38° 52' 58" / 22° 06' 55" – 630 m a.s.l. – 7/12/2002 – Forest of *Q. frainetto*
- 7: 38° 52' 52" / 22° 06' 48" – 660-680 m a.s.l. – 7/13-16/2002, 6/22/2003 – Forest of *Q. frainetto*
- 10: 38° 52' 54" / 22° 06' 55" – 660-670 m a.s.l. – 7/18-19/2002 – Mixed forest of *Q. frainetto*-*Q. pubescens*
- 11: 38° 52' 23" / 22° 05' 50" – 1010 m a.s.l. – 7/22-26/2002 – Forest of *Abies cephalonica*
- 12: 38° 52' 20" / 22° 05' 38" – 1010 m a.s.l. – 6/19/2003 – Forest of *A. cephalonica*
- 13: 38° 52' 17" / 22° 05' 24" – 1020 m a.s.l. – 6/21/2003 – Forest of *A. cephalonica*
- 14: 38° 52' 33" / 22° 05' 56" – 960-990 m a.s.l. – 6/23-24/2003 – Forest of *A. cephalonica*
- 15: 38° 53' 22" / 22° 07' 40" – 460 m a.s.l. – 4/29/2005 – Forest of *Q. pubescens*
- 16: 38° 53' 11" / 22° 07' 20" – 560 m a.s.l. – 4/30/2005, 04/19/2006 – Meadow next to mixed forest of *Q. pubescens*-*Q. frainetto* / Mixed forest of *Q. pubescens*-*Q. frainetto*
- 17: 38° 52' 17" / 22° 07' 55" – 520 m a.s.l. – 5/2/2005 – Forest of *Q. frainetto*

- 18: 38° 53' 44" / 22° 05' 15" – 570 m a.s.l. – 5/3/2005 – Forest of *Q. frainetto*/Roadside in *Q. frainetto* forest
- 19: 38° 52' 51" / 22° 08' 08" – 460 m a.s.l. – 5/4/2005 – Forest of *Q. frainetto*
- 20: 38° 52' 45" / 22° 08' 14" – 450 m a.s.l. – 5/4/2005 – Mixed forest of *Q. pubescens-Q. frainetto*
- 21: 38° 53' 11" / 22° 07' 41" – 460-470 m a.s.l. – 5/5/2005 – Forest of *Q. pubescens*
- 22: 38° 52' 57" / 22° 08' 50" – 380 m a.s.l. – 6/7/2005 – Forest of *Q. pubescens*
- 23: 38° 53' 19" / 22° 08' 54" – 320 m a.s.l. – 6/7/2005 – Forest of *Q. pubescens* / Clearing in *Q. pubescens* forest
- 24: 38° 54' 09" / 22° 05' 42" – 470 m a.s.l. – 6/8/2005 – Forest of *Q. frainetto*
- 25: 38° 53' 59" / 22° 05' 33" – 530 m a.s.l. – 6/8/2005 – Forest of *Q. frainetto*
- 26: 38° 53' 32" / 22° 05' 07" – 630 m a.s.l. – 6/9/2005 – Forest of *Q. frainetto*
- 27: 38° 53' 28" / 22° 04' 36" – 580 m a.s.l. – 6/9/2005 – Forest of *Q. frainetto*
- 28: 38° 52' 10" / 22° 07' 33" – 650 m a.s.l. – 6/10/2005, 4/28/2006 – Forest of *Q. frainetto*
- 29: 38° 52' 06" / 22° 07' 26" – 690 m a.s.l. – 6/10/2005 – Forest of *Q. frainetto*
- 30: 38° 53' 06" / 22° 02' 16" – 640 m a.s.l. – 6/11/2005 – Forest of *Q. frainetto*
- 31: 38° 53' 25" / 22° 02' 15" – 560 m a.s.l. – 6/11/2005 – Forest of *Q. frainetto*
- 32: 38° 53' 33" / 22° 01' 37" – 400 m a.s.l. – 6/14/2005 – Forest of *Q. frainetto*
- 33: 38° 53' 18" / 22° 03' 20" – 680 m a.s.l. – 6/15/2005 – Forest of *Q. frainetto*
- 34: 38° 53' 28" / 22° 01' 08" – 440 m a.s.l. – 6/15/2005 – Forest of *Q. frainetto*
- 35: 38° 53' 04" / 22° 00' 33" – 560 m a.s.l. – 6/16/2005 – Forest of *Q. petraea*/Roadside in *Quercus petraea* forest
- 36: 38° 53' 15" / 22° 00' 44" – 530 m a.s.l. – 6/16/2005 – Forest of *Q. frainetto*
- 37: 38° 53' 03" / 22° 03' 32" – 710 m a.s.l. – 6/17/2005 – Mixed forest of *Q. frainetto-Castanea sativa-Q. petraea*
- 38: 38° 53' 18" / 22° 03' 34" – 590 m a.s.l. – 6/17/2005 – Forest of *Q. frainetto*
- 39: 38° 53' 16" / 22° 05' 31" – 710 m a.s.l. – 6/18/2005 – Mixed forest of *Q. frainetto-Q. petraea*
- 40: 38° 53' 44" / 22° 05' 27" – 630 m a.s.l. – 6/18/2005 – Forest of *Q. frainetto*
- 41: 38° 52' 58" / 22° 01' 00" – 570 m a.s.l. – 6/20/2005 – Forest of *Q. frainetto*
- 42: 38° 53' 15" / 22° 05' 57" – 780 m a.s.l. – 6/21/2005 – Forest of *Q. frainetto*
- 43: 38° 53' 13" / 22° 05' 25" – 840 m a.s.l. – 6/21/2005 – Forest of *Q. petraea*
- 44: 38° 52' 45" / 22° 04' 56" – 870 m a.s.l. – 6/22/2005 – Forest of *A. cephalonica*
- 45: 38° 51' 48" / 22° 02' 16" – 800 m a.s.l. – 6/23/2005 – Forest of *Q. frainetto*
- 46: 38° 52' 04" / 22° 01' 55" – 840 m a.s.l. – 6/23/2005 – Forest of *Castanea sativa*
- 47: 38° 52' 38" / 21° 59' 55" – 770 m a.s.l. – 6/24/2005 – Forest of *Q. frainetto*
- 48: 38° 53' 10" / 21° 59' 14" – 710 m a.s.l. – 6/24/2005 – Forest of *Q. frainetto*
- 49: 38° 52' 43" / 22° 02' 41" – 850-920 m a.s.l. – 6/25/2005 – Mixed forest of *Q. petraea-Q. frainetto-Castanea sativa*
- 50: 38° 52' 48" / 22° 02' 57" – 900 m a.s.l. – 6/25/2005 – Mixed forest of *Castanea sativa-Q. frainetto-Q. petraea*
- 51: 38° 52' 22" / 22° 01' 48" – 790 m a.s.l. – 6/26/2005 – Mixed forest of *Ostrya carpinifolia-Q. frainetto*
- 52: 38° 50' 50" / 22° 02' 53" – 900 m a.s.l. – 6/28/2005 – Forest of *Q. frainetto*
- 53: 38° 51' 08" / 22° 02' 31" – 1000 m a.s.l. – 6/28/2005 – Forest of *Q. frainetto*
- 54: 38° 52' 06" / 21° 59' 23" – 1030 m a.s.l. – 6/29/2005 – Forest of *Q. frainetto*
- 55: 38° 52' 10" / 21° 59' 13" – 1070 m a.s.l. – 6/29/2005 – Mixed forest of *Q. petraea-Abies cephalonica-Castanea sativa*
- 56: 38° 53' 20" / 21° 59' 08" – 660 m a.s.l. – 7/3/2005 – Forest of *Q. frainetto*
- 57: 38° 53' 04" / 21° 58' 53" – 750 m a.s.l. – 7/4/2005 – Forest of *Q. frainetto*
- 58: 38° 52' 48" / 21° 58' 46" – 840 m a.s.l. – 7/4/2005 – Forest of *Q. frainetto*

- 59: 38° 52' 34" / 21° 58' 48" – 910 m a.s.l. – 7/4/2005 – Mixed forest of *Q. petraea*-*Castanea sativa*-*Q. frainetto*
- 60: 38° 52' 04" / 22° 01' 01" – 800 m a.s.l. – 7/5/2005 – Forest of *Q. frainetto*
- 61: 38° 51' 51" / 22° 05' 53" – 750 m a.s.l. – 7/5/2005 – Forest of *Q. frainetto*
- 62: 38° 51' 58" / 22° 00' 27" – 830 m a.s.l. – 7/6/2005 – Forest of *Q. frainetto*
- 63: 38° 52' 01" / 22° 00' 06" – 860 m a.s.l. – 7/6/2005 – Forest of *Q. frainetto*
- 64: 38° 51' 28" / 22° 02' 57" – 970 m a.s.l. – 7/7/2005 – Mixed stand of *Platanus orientalis*-*Q. frainetto* / Roadside in *Q. frainetto* forest
- 65: 38° 51' 31" / 22° 02' 33" – 920 m a.s.l. – 7/7/2005 – Mixed forest of *Q. petraea*-*Q. frainetto*
- 66: 38° 52' 55" / 22° 06' 03" – 810 m a.s.l. – 7/8/2005 – Forest of *Abies cephalonica*
- 67: 38° 52' 47" / 22° 05' 36" – 840 m a.s.l. – 7/8/2005 – Forest of *A. cephalonica*
- 68: 38° 52' 29" / 22° 01' 09" – 810 m a.s.l. – 7/10/2005 – Forest of *Q. frainetto*
- 69: 38° 52' 20" / 22° 01' 37" – 860 m a.s.l. – 7/10/2005 – Mixed forest of *C. sativa*-*Q. petraea*
- 70: 38° 52' 14" / 22° 01' 38" – 910 m a.s.l. – 7/11/2005 – Mixed forest of *C. sativa*-*Q. frainetto*
- 71: 38° 52' 46" / 22° 03' 03" – 920 m a.s.l. – 7/11/2005 – Mixed forest of *C. sativa*-*Q. petraea*
- 72: 38° 52' 26" / 22° 00' 40" – 870 m a.s.l. – 7/12/2005 – Forest of *Q. frainetto*
- 73: 38° 52' 13" / 22° 01' 13" – 900 m a.s.l. – 7/12/2005 – Forest of *Q. frainetto*
- 74: 38° 53' 07" / 22° 05' 13" – 910 m a.s.l. – 7/13/2005 – Mixed forest of *A. cephalonica*-*Q. petraea*
- 75: 38° 52' 50" / 22° 05' 11" – 1070 m a.s.l. – 7/13/2005 – Mixed forest of *A. cephalonica*-*Q. petraea*
- 76: 38° 52' 30" / 22° 04' 12" – 1030-1040 m a.s.l. – 7/18/2005 – Roadside / Clearing in *A. cephalonica*-*Q. petraea* forest / Mixed forest of *A. cephalonica*-*Q. petraea*
- 77: 38° 52' 33" / 22° 04' 26" – 980 m a.s.l. – 7/18/2005 – Forest of *A. cephalonica*
- 78: 38° 51' 37" / 22° 06' 58" – 1060 m a.s.l. – 7/19/2005, 4/19/2006 – Forest of *Q. frainetto* / Clearing in *Q. frainetto* forest
- 79: 38° 51' 40" / 22° 07' 16" – 950 m a.s.l. – 7/19/2005, 4/19/2006 – Forest of *Q. frainetto*
- 80: 38° 52' 48" / 22° 03' 13" – 980 m a.s.l. – 7/20/2005 – Forest of *Q. petraea*/Mixed forest of *Q. petraea*-*Castanea sativa*-*Q. frainetto*
- 81: 38° 52' 23" / 22° 03' 24" – 1100 m a.s.l. – 7/20-23/2005 – Forest of *Q. petraea* / Mixed forest of *Q. petraea*-*Castanea sativa*
- 82: 38° 52' 35" / 22° 03' 18" – 1030 m a.s.l. – 7/21/2005 – Forest of *Q. petraea*
- 83: 38° 52' 12" / 22° 04' 15" – 1200 m a.s.l. – 7/22/2005 – Forest of *A. cephalonica*
- 84: 38° 52' 17" / 22° 03' 38" – 1110 m a.s.l. – 7/22/2005 – Mixed forest of *Q. petraea*-*A. cephalonica*
- 85: 38° 53' 22" / 22° 07' 25" – 520 m a.s.l. – 4/26/2006 – Forest of *Q. pubescens*
- 86: 38° 53' 14" / 22° 07' 17" – 540 m a.s.l. – 4/26/2006 – Forest of *Q. pubescens*
- 87: 38° 53' 24" / 22° 07' 05" – 470 m a.s.l. – 4/27/2006 – Forest of *Q. pubescens*
- 88: 38° 53' 13" / 22° 09' 16" – 350 m a.s.l. – 4/27/2006 – Forest of *Q. pubescens*
- 89: 38° 53' 15" / 22° 07' 31" – 530 m a.s.l. – 4/29/2006 – Forest of *Q. pubescens*
- 90: 38° 51' 45" / 22° 04' 22" – 1460 m a.s.l. – 6/12/2007 – Rocky slope
- 91: 38° 52' 03" / 22° 06' 10" – 1060 m a.s.l. – 6/12/2007 – Rocky meadow
- 92: 38° 52' 50" / 22° 02' 43" – 850 m a.s.l. – 6/25/2005 – Mixed forest of *Q. frainetto*-*Q. petraea*-*Castanea sativa*
- 93: 38° 52' 22" / 22° 04' 09" – 1100 m a.s.l. – 7/22/2005 – Roadside in *A. cephalonica* forest / Mixed forest of *A. cephalonica*-*Q. petraea*
- 95: 38° 54' 11" / 22° 05' 48" – 430 m a.s.l. – 5/7/2005 – Roadside
- 96: 38° 52' 55" / 22° 08' 34" – 310 m a.s.l. – 5/4/2005 – Roadside in meadow
- 97: 38° 54' 16" / 22° 07' 03" – 280 m a.s.l. – 4/24/2006 – Roadside
- 98: 38° 54' 10" / 22° 07' 03" – 250 m a.s.l. – 7/5/2005 – Roadside in meadow
- 99: 38° 52' 19" / 22° 04' 17" – 1140 m a.s.l. – 7/22/2005 – Forest of *A. cephalonica*
- 100: 38° 53' 36" / 22° 05' 14" – 610-620 m a.s.l. – 5/7/2005 – Roadside in *Q. frainetto* forest

- 102: 38° 53' 08" / 22° 07' 17" – 560 m a.s.l. – 4/30/2005 – Ravine
 103: 38° 53' 44" / 22° 09' 15" – 260 m a.s.l. – 4/18/2006 – Abandoned field / Open shrubland with
Q. pubescens-Q. coccifera-Pyrus spinosa-Juniperus oxycedrus
 104: 490-580 m a.s.l. – 4/25/2003 – Margins of oak forest / Clearing in oak forest / Roadside
 105: 38° 52' 38" / 22° 08' 12" – 470 m a.s.l. – 5/4/2005 – Meadow / Margins of oak forest
 106: 38° 54' 17" / 22° 05' 53" – 360 m a.s.l. – 5/7/2005 – Roadside
 107: 38° 52' 07" / 22° 06' 31" – 910 m a.s.l. – 4/19/2006 – Roadside
 110: 38° 53' 43" / 22° 06' 12" – 580 m a.s.l. – 5/7/2005 – Roadside
 111: 38° 53' 41" / 22° 05' 47" – 600 m a.s.l. – 5/7/2005 – Roadside in *Q. frainetto* forest / Margins
 of *Q. frainetto* forest
 112: 38° 54' 14" / 22° 07' 08" – 230 m a.s.l. – 4/24/2006 – Meadow next to river
 113: 38° 52' 28" / 22° 08' 52" – 4/27/2006 – Roadside
 114: 38° 54' 26" / 22° 06' 58" – 200 m a.s.l. – 4/24/2006 – Reforestation of *Pinus*-along path
 115: 38° 52' 20" / 22° 03' 26" – 1110 m a.s.l. – 7/23/2005 – Forest of *Q. petraea*
 116: 38° 53' 30" / 22° 07' 05" – 430 m a.s.l. – 4/25/2006 – Roadside / Abandoned forest road
 117: 38° 53' 24" / 22° 01' 36" – 380 m a.s.l. – 6/14/2005 – Roadside in a riverside
 119: 38° 52' 00" / 22° 07' 02" – 850 m a.s.l. – 5/2/2005 – Roadside in a ravine
 120: 38° 52' 12" / 22° 07' 28" – 640 m a.s.l. – 5/2/2005 – Meadow / *Q. frainetto* forest / Margins of
Q. frainetto forest – damp place, next to water tank
 122: 38° 51' 50" / 22° 06' 16" – 990 m a.s.l. – 4/19/2006 – Roadside next to stream
 123: 38° 50' 05" / 22° 02' 51" – 640 m a.s.l. – 5/6/2005 – Roadside
 124: 38° 51' 37" / 22° 06' 58" – 1100 m a.s.l. – 4/19/2006 – Forest of *Q. frainetto*
 125: 38° 53' 25" / 22° 07' 36" – 480 m a.s.l. – 4/25/2006 – Meadow / Margins of *Q. pubescens* forest
 / Clearing in *Q. pubescens* forest
 126: 38° 54' 25" / 22° 07' 04" – 210 m a.s.l. – 4/24/2006 – Reforestation of *Pinus*-along path
 127: 38° 52' 51" / 22° 08' 08" – 450 m a.s.l. – 5/4/2005 – Clearing in *Q. pubescens* forest
 129: 38° 53' 19" / 22° 05' 52" – 780 m a.s.l. – 6/21/2005 – Mixed forest of *Q. frainetto-Q. petraea*
 130: 38° 49' 45" / 22° 05' 21" – 460 m a.s.l. – 5/6/2005 – Riverside
 132: 38° 52' 46" / 22° 06' 23" – 800 m a.s.l. – 7/19/2005 – Roadside
 133: 38° 52' 11" / 22° 07' 45" – 580 m a.s.l. – 5/2/2005 – Abandoned forest road
 134: 38° 52' 57" / 22° 09' 14" – 410 m a.s.l. – 4/27/2006 – Stream
 135: 38° 50' 37" / 22° 02' 19" – 650 m a.s.l. – 6/6/2005 – Roadside-Stream

Results

Floristic catalogue – The following abbreviations and symbols are used in the floristic catalogue:

+ : new record

* : literature report not confirmed

● : greek endemic

obs. : observed in the field (no collection available)

s.lat. : sensu lato

s.n. : without number

{=..} : synonym

{“..”} : misapplied name or misidentification

Sam. : leg. D. Samaras (TAUF), followed by collection number

B&Q : Barbéro & Quézel

W&W : Willing & Willing

H : Hölzinger & al.

K : Künkele

T&A : Tsiftsis & Antonopoulos

PTERIDOPHYTA

ASPLENIACEAE

- + *Asplenium adiantum-nigrum* L. - H, Pt. - **5** (Sam.1), **24** (Sam.610), **87** (Sam.1189)
- Asplenium onopteris* L. - H, ME - B&Q (1976:15), **87** (Sam.1188), **92** (Sam.847)
- + *Asplenium trichomanes* subsp. *quadrivalens* D. E. Mey. - H, EA - **92** (Sam.848)

DENNSTAEDTIACEAE

- + *Pteridium aquilinum* (L.) Kuhn subsp. *aquilinum* - G, Co - **4** (Sam.2)

DRYOPTERIDACEAE

- + *Polystichum setiferum* (Forssk.) Woyнар - G, EA - **65** (Sam.942)

OPHIOGLOSSACEAE

- + *Ophioglossum vulgatum* L. - G, Ct - **64** (Sam.940)

SPERMATOPHYTA – GYMNOSPERMAE

CUPRESSACEAE

- Juniperus oxycedrus* subsp. *deltoides* (R. P. Adams) N. G. Passal. - P, EM - B&Q (1976:15), **1** (Sam.24)

PINACEAE

- + • *Abies cephalonica* Loudon - P, Endem. - **4** (Sam.46), **11** (Sam.47), **93** (Sam.1072), **76** (Sam.1088)

TAXACEAE

- + *Taxus baccata* L. - P, EA - **99** (Sam.1067)

SPERMATOPHYTA – ANGIOSPERMAE

DICOTYLEDONEAE

ACANTHACEAE

- + *Acanthus spinosus* L. - H, Me - obs.

ACERACEAE

- + *Acer campestre* L. - P, EA - **3** (Sam.70), **4** (Sam.71), **27** (Sam.648), **87** (Sam.1192)
- + *Acer monspessulanum* L. subsp. *monspessulanum* - P, ME - **1** (Sam.72), **3** (Sam.73), **10** (Sam.74), **88** (Sam.1203)

AMARANTHACEAE

- * *Amaranthus albus* L. - T, X - W&W (2006:37)
- * *Amaranthus blitoides* S. Watson - T, X - W&W (2006:37)
- * *Amaranthus caudatus* L. - T, X - W&W (2006:38)

- * *Amaranthus hybridus* L. - T, X - W&W (2006:39)
- * *Amaranthus retroflexus* L. - T, X - W&W (2006:40)

ANACARDIACEAE

- Cotinus coggygria* Scop. - P, EA - B&Q (1976:15), **95** (Sam.566)
- Pistacia terebinthus* L. subsp. *terebinthus* - P, Me - B&Q (1976:15), **15** (Sam.411), **88** (Sam.1200), **95** (Sam.567)

APIACEAE (UMBELLIFERAE)

- + *Anthriscus sylvestris* subsp. *nemorosus* (M. Bieb.) Koso-Pol. - H, Pt - **12** (Sam.155), **65** (Sam.943)
- + *Bunium ferulaceum* Sm. - G, EM. - **2** (Sam.167)
- + *Bupleurum glumaceum* Sm. - T, Bk - **91** (Sam.1364)
- + *Chaerophyllum nodosum* (L.) Crantz {= *Myrrhoides nodosa* (L.) Cannon} - T, MS - **3** (Sam.170), **67** (Sam.957b)
- * *Daucus carota* L. s.lat. - T H, Pt - W&W (2006:62)
- + *Dichoropetalum vittijugum* (Boiss.) Pimenov & Kljuykov {= *Peucedanum vittijugum* Boiss.} - H, Bk - **7** (Sam.156), **10** (Sam.157), **28** (Sam.662), **88** (Sam.1199)
- + *Eryngium campestre* L. - H, EA - **13** (Sam.175), **15** (Sam.419)
- + *Ferulago sylvatica* (Besser) Rchb. subsp. *sylvatica* - H, BI - **53** (Sam.869)
- * *Foeniculum vulgare* Mill. - H, Me - W&W (2006:70)
- Geocaryum capillifolium* (Guss.) Coss. - G, BI - B&Q (1976:29), **2** (Sam.171), **3** (Sam.172), **4** (Sam.173), **12** (Sam.174), **16** (Sam.451), **17** (Sam.470), **24** (Sam.618)
- + *Oenanthe pimpinelloides* L. s.lat. - H, EA - **3** (Sam.168, Sam.169), **17** (Sam.469), **19** (Sam.506), **22** (Sam.585), **86** (Sam.1181)
- + *Opopanax chironium* (L.) W.D.J. Koch - H, ME - **88** (Sam.1205)
- + *Orlaya daucoides* (L.) Greuter - T, MS - **15** (Sam.409), **42** (Sam.774), **45** (Sam.814), **87** (Sam.1185), **89** (Sam.1219), **96** (Sam.550), **97** (Sam.1124)
- * *Physospermum cornubiense* (L.) DC. - H, EA - B&Q (1976:29)
- * *Pimpinella saxifraga* L. - H, ES - W&W (2008:125)
- + *Scandix pecten-veneris* L. - T, EA - **96** (Sam.549)
- + *Selinum silaifolium* (Jacq.) Beck {= *Cnidium silaifolium* (Jacq.) Simonkai} - H, ME - **4** (Sam.176), **13** (Sam.177), **18** (Sam.488), **24** (Sam.619), **27** (Sam.653)
- + *Smyrniium perfoliatum* subsp. *rotundifolium* (Mill.) Hartvig - H, Me - **3** (Sam.164, Sam.165), **10** (Sam.166)
- + *Tordylium apulum* L. - T, Me - **97** (Sam.1128), **98** (Sam.581)
- * *Tordylium maximum* L. - T, EA - W&W (2008:153)
- Torilis africana* Spreng. {= *T. arvensis* subsp. *purpurea* (Ten.) Hayek} - T, ME - W&W (2008:154), **1** (Sam.158), **2** (Sam.159), **3** (Sam.160, Sam.161), **6** (Sam.162), **12** (Sam.163), **16** (Sam.450), **56** (Sam.894), **85** (Sam.1154), **87** (Sam.1191)
- + *Torilis leptophylla* (L.) Rchb. f. - T, EA - **90** (Sam.1393)

APOCYNACEAE

- + *Nerium oleander* L. - P, Me - obs.
- + *Vinca major* L. subsp. *major* - C, ME - obs.

AQUIFOLIACEAE

- + *Ilex aquifolium* L. - P, ME - **83** (Sam.1056)

ARALIACEAE

- + *Hedera helix* L. subsp. *helix* - P, ME - **3** (Sam.75), **5** (Sam.76), **11** (Sam.77)

ARISTOLOCHIACEAE

- + *Aristolochia elongata* (Duch.) E. Nardi - G, Bk - **3** (Sam.3), **13** (Sam.4), **15** (Sam.435)
 + *Aristolochia rotunda* subsp. *insularis* (Nardi & Arrigoni) Gamisans - G, ME - **3** (Sam.5)

ASTERACEAE (COMPOSITAE)

- + *Achillea grandifolia* Friv. - H, BA - **84** (Sam.1081)
 + *Achillea nobilis* subsp. *neilreichii* (A. Kern.) Velen. - H, EA - **90** (Sam.1394)
 + *Aetheorhiza bulbosa* (L.) Cass. s.lat. - G, Me - **15** (Sam.418)
 + *Anthemis tinctoria* subsp. *parnassica* (Boiss. & Heldr.) Nyman - H, Bk - **24** (Sam.617)
 * *Anthemis arvensis* L. subsp. *arvensis* - T, EA - W&W (2006:43)
 * *Anthemis cotula* L. - T, EA - W&W (2006:43)
 * *Anthemis ruthenica* M. Bieb. - T, EA - W&W (2008:52)
 + *Bellis annua* L. subsp. *annua* - T, Me - **1** (Sam.260)
 * *Bellis perennis* L. - H, EA - W&W (2006:47)
 * *Carduus pycnocephalus* L. - H, ME - W&W (2008:64)
 + *Carlina corymbosa* subsp. *graeca* (Heldr. & Sartori) Nyman - H, BA - **5** (Sam.267), **10** (Sam.268), **14** (Sam.269), **15** (Sam.425), **22** (Sam.595), **85** (Sam.1278), **88** (Sam.1196), **89** (Sam.1230), **54** (Sam.876)
 + *Centaurea pichleri* Boiss. - H, BA - **78** (Sam.1027)
 * *Centaurea salonitana* Vis. - H, EA - W&W (2008:67)
 * *Centaurea solstitialis* L. subsp. *solstitialis* - H, Me - W&W (2008:67)
 * *Chondrilla juncea* L. - H, ME - W&W (2006:55)
Cichorium intybus L. - H, EA - W&W (2008:72), **85** (Sam.1274)
 * *Cirsium ligulare* subsp. *albanum* Wettst. - H, Bk - W&W (2006:57)
 + *Crepis fraasii* Sch. Bip. subsp. *fraasii* - H, EM - **2** (Sam.272), **3** (Sam.273), **4** (Sam.274), **12** (Sam.275), **13** (Sam.276), **22** (Sam.601)
 * *Crepis neglecta* L. s.lat. {"Crepis capillaris (L.) Walk."} - T, BI - W&W (2008:77)
 * *Crepis setosa* Haller f. - T, EA - W&W (2008:77)
 + *Crupina crupinastrum* (Moris) Vis. - T, EA - **90** (Sam.1402)
 * *Dittrichia graveolens* (L.) Greuter - T, Me - W&W (2006:64)
Doronicum orientale Hoffm. - G, EA - B&Q (1976:29), **3** (Sam.277), **11** (Sam.278, Sam.279), **16** (Sam.456)
 * *Erigeron bonariensis* L. {= *Conyza bonariensis* (L.) Cronquist} - H, X - W&W (2006:58)
 * *Erigeron canadensis* L. {= *Conyza canadensis* (L.) Cronquist} - H T, X - W&W (2006:59)
 * *Filago germanica* (L.) Huds. {= *Filago vulgaris* Lam.} - T, Pt - W&W (2008:86)
 * *Glebionis segetum* (L.) Fourr. {= *Chrysanthemum segetum* L.} - T, Me - W&W (2008:72)
 * *Helminthotheca echioides* (L.) Holub {= *Picris echioides* L.} - T, Me - W&W (2008:124)
 + ● *Hieracium bracteolatum* subsp. *reinholdii* (Boiss.) Zahn - H, Endem. - **24** (Sam.616), **35** (Sam.734), **41** (Sam.764), **48** (Sam.1280), **57** (Sam.899)
 * *Hypochaeris achyrophorus* L. - T, Me - W&W (2008:98)
 * *Hypochaeris radicata* L. - H, EA - W&W (2008:98)
 + *Lactuca hispida* DC. {= *Cephalorrhynchus tuberosus* (Steven) Schcian} - G, EA - **51** (Sam.850)
 + *Lactuca muralis* (L.) Gaertn. {= *Mycelis muralis* (L.) Dumort.} - H, Pt - **11** (Sam.290)
Lapsana communis subsp. *adenophora* (Boiss.) Rech. f. - H, BA - B&Q (1976:29), **52** (Sam.856), **64** (Sam.937), **70** (Sam.969), **72** (Sam.979), **84** (Sam.1077)

- Leontodon tuberosus* L. - H, Me - W&W (2006:76), **1** (Sam.289), **15** (Sam.423), **19** (Sam.509), **31** (Sam.689), **88** (Sam.1202), **89** (Sam.1228)
- Matricaria chamomilla* L. {= *Chamomilla recutita* (L.) Rauschert} - T, Co - W&W (2008:71), obs.
- + *Pilosella bauhini* subsp. *magyarica* (Peter) S. Bräut. in Greuter & Raus {= *Hieracium bauhini* Schult.} - H, EA - **3** (Sam.280), **12** (Sam.282), **76** (Sam.1003), **89** (Sam.1233)
- + *Pilosella cymosa* subsp. *sabina* (Sebast.) H.P. Fuchs - H, EA - **13** (Sam.285), **81** (Sam.1042)
- + *Ptilostemon strictus* (Ten.) Greuter in Greuter & Rech. f. - H, BI - **11** (Sam.270), **35** (Sam.733), **42** (Sam.780), **48** (Sam.829, 1281)
- + *Rhagadiolus stellatus* (L.) Gaertn. - T, Me - **1** (Sam.291), **7** (Sam.292), **15** (Sam.422), **16** (Sam.454)
- Scolymus hispanicus* L. subsp. *hispanicus* - H, Me - W&W (2006:91), obs.
- + *Scorzoneroides cichoriacea* (Ten.) Greuter in Greuter, Gutermaun & Talavera {= *Leontodon cichoriaceus* (Ten.) Sanguin.} - G, Me - **2** (Sam.286), **3** (Sam.287, Sam.288), **16** (Sam.455), **18** (Sam.490), **19** (Sam.510), **22** (Sam.600), **28** (Sam.1264), **85** (Sam.1172)
- * *Senecio vulgaris* L. - T, Pt - W&W (2006:91)
- Sonchus asper* (L.) Hill subsp. *asper* - T, Pt - W&W (2008:148), **100** (Sam 568)
- * *Symphotrichum squamatum* (Spreng.) G.L. Nesom {= *Aster squamatus* (Spreng.) Hieron.} - C H, X - W&W (2006:44)
- * *Tanacetum parthenium* (L.) Sch. Bip. - H, EA - W&W (2006:98)
- * *Xanthium spinosum* L. - T, X - W&W (2006:104)
- * *Xanthium strumarium* L. subsp. *strumarium* - T, Pt - W&W (2006:104)

BETULACEAE

- + *Carpinus orientalis* Mill. subsp. *orientalis* - P, EA - **3** (Sam.6), **68** (Sam.960), **74** (Sam.985), **76** (Sam.1001)
- + *Ostrya carpinifolia* Scop. - P, MS - **41** (Sam.763), **64** (Sam.932), **81** (Sam.1083), **100** (Sam.571)
- + *Alnus glutinosa* (L.) Gaertn. subsp. *glutinosa* - P, ES - **130** (Sam.564)
- + *Corylus avellana* L. - P, EA - **64** (Sam.941)

BORAGINACEAE

- + ● *Alkanna calliensis* Boiss. - H, Endem. - **91** (Sam.1378), **123** (Sam. 559)
- + *Anchusa undulata* subsp. *hybrida* (Ten.) Bég. - H, Me - **90** (Sam.1391)
- + *Buglossoides purpureo-caerulea* (L.) I. M. Johnst. - H, EA - **3** (Sam.258, Sam.259), **15** (Sam.427), **102** (Sam.529)
- Echium italicum* subsp. *biebersteinii* (Lacaita) Greuter & Burdet - H, MS - W&W (2008:82), obs.
- * *Heliotropium europaeum* L. - T, ME - W&W (2006:71)
- * *Heliotropium hirsutissimum* Grauer - T, EM - W&W (2006:72)
- + *Myosotis ramosissima* Rochel subsp. *ramosissima* - T, EA - **1** (Sam.252), **2** (Sam.253), **3** (Sam.254), **15** (Sam.428), **30** (Sam.677), **31** (Sam.691), **32** (Sam.692), **42** (Sam.771), **78** (Sam.1024)
- Myosotis sylvatica* subsp. *cyanea* (Hayek) Vestergren - H T, Me - B&Q (1976:29), **4** (Sam.255), **11** (Sam.256), **12** (Sam.257), **42** (Sam.778), **43** (Sam.788), **44** (Sam.795), **45** (Sam.816), **51** (Sam.851), **53** (Sam.870), **65** (Sam.944), **69** (Sam.964), **74** (Sam.988), **75** (Sam.991), **76** (Sam.999), **80** (Sam.1037), **81** (Sam.1044), **82** (Sam.1048), **83** (Sam.1064)
- + *Neotostema apulum* (L.) I. M. Johnst. - T, Me - obs.
- Symphytum bulbosum* K. F. Schimp. - G, Me - B&Q (1976:29), **1** (Sam.250), **13** (Sam.251)

BRASSICACEAE (CRUCIFERAE)

- + *Aethionema saxatile* subsp. *graecum* (Boiss. & Spruner) Hayek - C, BA - **90** (Sam.1415)

- + *Alliaria petiolata* (M. Bieb.) Cavara & Grande - H, Pt - **70** (Sam.972)
- + *Alyssum montanum* subsp. *repens* (Baumg.) Schmalh. - C, ME - **90** (Sam.1416)
- + *Alyssum simplex* Rudolphi {= *Alyssum minus* (L.) Rothm.} - T, ES - **97** (Sam.1125), **125** (Sam.1137)
- + *Arabis collina* Ten. - H, Me - **73** (Sam.984)
- + *Arabis glabra* (L.) Bernh. - H, Eu - **91** (Sam.1365)
- + *Arabis turrata* L. - H, EA - **51** (Sam.849)
- + *Arabis verna* (L.) R. Br. in W. T. Aiton - T, Me - **79** (Sam.1250)
- + *Capsella bursa-pastoris* (L.) Medik. - T H, Co - W&W (2008:63), obs.
- + *Cardamine bulbifera* (L.) Crantz - G, Eu - **64** (Sam.939)
- + *Cardamine graeca* L. - T, Me - **2** (Sam.7), **14** (Sam.8)
- + *Cardamine hirsuta* L. - T, Co - **2** (Sam.9), **11** (Sam.10), **16** (Sam.463)
- + *Draba muralis* L. - T, ME - **85** (Sam.1163), **78** (Sam.1023)
- + • *Erysimum asperulum* Boiss. & Heldr. in Boiss. - H, Endem. - **91** (Sam.1366)
- + *Erysimum microstylum* Hausskn. - H, Bk - **90** (Sam.1417)
- + *Lepidium draba* L. subsp. *draba* - G H, Co - **111** (Sam.575)
- + *Nasturtium officinale* R. Br. - H, Co - **120** (Sam.533)
- * *Raphanus raphanistrum* L. subsp. *raphanistrum* - T, EA - W&W (2008:135)
- + *Rapistrum rugosum* (L.) All. - T, EA - W&W (2008:135), **103** (Sam.s.n.), **105** (Sam.538)
- + *Sisymbrium officinale* (L.) Scop. - T, ES/[Co] - W&W (2008:147), **105** (Sam.539)

CAESALPINIACEAE

- + *Cercis siliquastrum* L. - P, MS - B&Q (1976:15), obs.

CAMPANULACEAE

- * *Campanula ramosissima* Sm. - T, Me - W&W (2008:63)
- * *Campanula sparsa* subsp. *sphaerothrix* (Griseb.) Hayek - T, Bk - B&Q (1976:29)
- + *Campanula spatulata* subsp. *spruneriana* (Hampe) Hayek - G, Bk - **1** (Sam.263), **2** (Sam.264), **3** (Sam.265), **12** (Sam.266), **44** (Sam.794), **84** (Sam.1080), **29** (Sam.1270)
- + *Campanula trachelium* subsp. *athoa* (Boiss. & Heldr.) Hayek - H, Bk - B&Q (1976:29), **41** (Sam.765), **84** (Sam.1076)
- + *Legousia speculum-veneris* (L.) Chaix - T, ME - **90** (Sam.1405)

CAPRIFOLIACEAE

- + *Lonicera etrusca* Santi - P, Me - **21** (Sam.525), **3** (Sam.262)
- * *Lonicera implexa* Aiton - P, Me - B&Q (1976:15)

CARYOPHYLLACEAE

- + *Arenaria serpyllifolia* L. - T, EA - **14** (Sam.11)
- + *Cerastium brachypetalum* subsp. *roeseri* (Boiss. & Heldr.) Nyman - T, Me - **31** (Sam.686), **32** (Sam.697), **54** (Sam.875), **77** (Sam.1012), **78** (Sam.1020)
- + *Cerastium brachypetalum* subsp. *tenoreanum* (Ser.) Soó - T, Eu - **16** (Sam.461), **28** (Sam.659), **85** (Sam.1174)
- + *Cerastium glomeratum* Thuill. - T, Co - **104** (Sam.376)
- + *Dianthus viscidus* Bory & Chaub - H, BA - **7** (Sam.398)
- + *Petrorhagia illyrica* (L.) P. W. Ball & Heywood subsp. *illyrica* - H, Bk - **91** (Sam.1375)
- + *Minuartia recurva* subsp. *condensata* (C. Presl) Greuter & Burdet - H C, ME - **90** (Sam.1418)
- + *Minuartia hybrida* (Vill.) Schischk in Kom. - T, EA - **90** (Sam.1420)
- + *Moehringia pentandra* J. Gay - T, Me - **67** (Sam.958)

- + *Moenchia mantica* (L.) Bartl. - T, ME - **31** (Sam.685), **54** (Sam.874), **105** (Sam.546)
- + *Petrorhagia dubia* (Raf.) G. López & Romo - T, Me - **90** (Sam.1419), **105** (Sam.544)
- + *Petrorhagia obcordata* (Margot & Reut.) Greuter & Burdet - T, BA - **91** (Sam.1371)
- + *Lychnis coronaria* (L.) Desr. {= *Silene coronaria* (L.) Clairv.} - H, MS - **35** (Sam.729)
- + *Silene conica* L. - T, EA - **90** (Sam.1422)
- + *Silene cretica* L. - T, Me - **105** (Sam.545)
- + *Silene italica* (L.) Pers. subsp. *italica* - H, EA - B&Q (1976:29), **2** (Sam.12), **4** (Sam.14), **12** (Sam.13), **28** (Sam.1259)
- + *Silene multicaulis* Guss. subsp. *multicaulis* - H, BI - **84** (Sam.1073)
- + *Silene viridiflora* L. - H, ES - **56** (Sam.892)
- + *Silene vulgaris* subsp. *bosniaca* (Beck) Greuter, Burdet & Long - H, Me - **12** (Sam.15)
- + *Stellaria cupaniana* Jord. & Fourr. - T, Me - **1** (Sam.20), **2** (Sam.21), **15** (Sam.433), **16** (Sam.460), **17** (Sam.478), **18** (Sam.496), **28** (Sam.1257), **87** (Sam.1183), **89** (Sam.1221)
- + *Stellaria media* (L.) Vill. - T H, Co - **3** (Sam.17), **4** (Sam.18), **11** (Sam.19), **18** (Sam.495), **43** (Sam.785a), **45** (Sam.817), **53** (Sam.867), **78** (Sam.1245), **79** (Sam. 1249), **85** (Sam.1168), **87** (Sam.1187), **16** (Sam. 1241)
- + *Velezia rigida* L. - T, MS - **91** (Sam.1380)

CHENOPODIACEAE

- * *Atriplex patula* L. - T, ES - W&W (2006:45)
- * *Chenopodium album* L. - T, Co - W&W (2008:71)
- * *Chenopodium opulifolium* Sehrad. - T, EA - W&W (2006:53)
- * *Chenopodium vulvaria* L. - T, EA - W&W (2006:54)
- * *Dysphania ambrosioides* (L.) Mosyakin & Clemants {= *Chenopodium ambrosioides* L.} - T H, X - W&W (2006:52)
- * *Dysphania botrys* (L.) Mosyakin & Clemants {= *Chenopodium botrys* L.} - T, EA - W&W (2006:53)

CISTACEAE

- + *Cistus creticus* L. subsp. *creticus* - C, Me - B&Q (1976:15), **5** (Sam.78), **19** (Sam.507)
- + *Cistus salviifolius* L. - C, Me - **106** (Sam.565)
- + *Helianthemum nummularium* (L.) Mill. subsp. *nummularium* - C, Me - **107** (Sam.1099)
- + *Tuberaria guttata* (L.) Fourr. - T, MA - **113** (Sam.1208)

CONVOLVULACEAE

- + *Calystegia silvatica* (Kit.) Griseb. - H, MS - W&W (2008:62), obs.
- + *Convolvulus arvensis* L. - H G, Co - **90** (Sam.1388)
- + *Cuscuta brevistyla* A. Rich. - T, ST - **42** (Sam.773)

CORNACEAE

- + *Cornus mas* L. - P, EA - **3** (Sam.79)

CRASSULACEAE

- + *Sedum amplexicaule* subsp. *tenuifolium* (Sm.) Greuter - C H, Me - **14** (Sam.22), **25** (Sam.630), **52** (Sam.863), **90** (Sam.1382)
- + *Sedum cepaea* L. - T, Me - **30** (Sam.682), **35** (Sam.739), **44** (Sam.800), **57** (Sam.898)
- + *Sedum hispanicum* L. - H C, EA - **90** (Sam.1384)
- + *Umbilicus luteus* (Huds.) Webb & Berthel. - G, Me - **82** (Sam.1051)

CUCURBITACEAE

- * *Ecballium elaterium* (L.) A. Rich. - G, MS - W&W (2006:65)

DIPSACACEAE

- * *Knautia integrifolia* (L.) Bertol. subsp. *integrifolia* - T, Me - W&W (2008:99)
 + *Pterocephalus plumosus* (L.) Coult. - T, MS - **91** (Sam.1367)
 * *Scabiosa columbaria* L. subsp. *columbaria* - H, EA - W&W (2008:141)
 * *Scabiosa atropurpurea* L. {= *Sixalix atropurpurea* (L.) Greuter & Burdet} - H, Me - W&W (2006:93)

ERICACEAE

- + *Hypopitys monotropa* Crantz subsp. *monotropa* {= *Monotropa hypopitys* L.} - G, Bo - **41** (Sam.769)

EUPHORBIACEAE

- + *Euphorbia apios* L. - G, Me - **3** (Sam.80, Sam.81), **24** (Sam.622)
 + *Euphorbia peplus* L. - T, Co - **15** (Sam.410), **88** (Sam.1197)
 + *Euphorbia phymatosperma* subsp. *cernua* (Coss. & Durieu) Vindt - T, Me - **17** (Sam.468), **32** (Sam.698), **36** (Sam.742), **56** (Sam.893)
 * *Euphorbia prostrata* Aiton - T, X - W&W (2006:69)

FABACEAE

- + *Astragalus glycyphyllos* subsp. *glycyphylloides* (DC.) Maire & Petitm. - C, BA - **44** (Sam.849)
 + *Astragalus pelecinus* (L.) Barneby - T, Me - **125** (Sam.1149)
 + *Bituminaria bituminosa* (L.) C.H. Stirt. - H, ME - **97** (Sam.1129)
Chamaecytisus hirsutus (L.) Link subsp. *hirsutus* {= *C. triflorus* (Lam.) Skalická} - C, Eu - B&Q (1976:29), **7** (Sam.97), **35** (Sam.725)
 + *Colutea arborescens* L. subsp. *arborescens* - P, EA - **100** (Sam.572)
 + *Dorycnium herbaceum* Vill. - H, ME - **49** (Sam.840)
Dorycnium hirsutum (L.) Ser. - H C, Me - B&Q (1976:15), **22** (Sam.599), **23** (Sam.609)
 + *Genista tinctoria* L. subsp. *tinctoria* - C, ES - **24** (Sam.615), **30** (Sam.674), **62** (Sam.922), **111** (Sam.574)
 + *Hippocrepis emerus* subsp. *emeroides* (Boiss. & Spruner) Greuter & Burdet ex Lassen {= *Coronilla emerus* subsp. *emeroides* (Boiss. & Spruner) Lassen} - P, EM - **27** (Sam.650), **59** (Sam.906), **100** (Sam.569)
 + *Hymenocarpus circinnatus* (L.) Savi - T, Me - **97** (Sam.1126)
 + *Lathyrus aphaca* L. - T, MS - **1** (Sam.98), **3** (Sam.99), **18** (Sam.551)
 + *Lathyrus cicera* L. - T, MS - **103** (Sam.s.n.), **116** (Sam.1130)
 + *Lathyrus digitatus* (M. Bieb.) Fiori in Fiori & Paol. - H, Me - **3** (Sam.100), **16** (Sam.449), **61** (Sam.918), **62** (Sam.920), **73** (Sam.982)
 + *Lathyrus grandiflorus* Sm. - H, BI - **76** (Sam.1006)
Lathyrus laxiflorus (Desf.) Kuntze - H, EM - B&Q (1976:29), **2** (Sam.101), **3** (Sam.102), **4** (Sam.103)
 + *Lathyrus niger* (L.) Bernh. - H, ME - **11** (Sam.148), **25** (Sam.635), **35** (Sam.728), **44** (Sam.789), **44** (Sam.789)
 + *Lathyrus nissolia* L. - T, ME - **21** (Sam.523)
 + *Lathyrus sphaericus* Retz. - T, EA - **2** (Sam.104), **3** (Sam.105), **10** (Sam.106), **15** (Sam.891), **56** (Sam.408)
 + *Lathyrus venetus* (Mill.) Wohlf. - H, Eu - **35** (Sam.726)

- + *Lens ervoides* (Brign.) Grande - T, Me - **107** (Sam.1100)
- + *Lotus conimbricensis* Brot. - T, Me - **125** (Sam.1148)
- + *Lotus corniculatus* L. - H, EA - **117** (Sam.707)
- + *Medicago arabica* (L.) Huds. - T, EA - **1** (Sam.107)
- + *Medicago coronata* (L.) Bartal. - T, MS - **112** (Sam.1109)
- + *Medicago disciformis* DC. - T, Me - **97** (Sam.1119)
- + *Medicago minima* (L.) Bartal. - T, Pt - **97** (Sam.1116, 1118), **107** (Sam.1102)
- + *Medicago orbicularis* (L.) Bartal. - T, MS - **97** (Sam.1115)
- + *Medicago polymorpha* L. - T, Pt - **97** (Sam.1114)
- * *Medicago sativa* L. subsp. *sativa* - H, EA - W&W (2006:78)
- + *Onobrychis caput-galli* (L.) Lam. - T, Me - **97** (Sam.1117), **98** (Sam.580)
- + *Ornithopus compressus* L. - T, Me - W&W (2008:120), **21** (Sam.522, Sam.555)
- + *Robinia pseudoacacia* L. - P, X - obs.
- + *Scorpiurus muricatus* L. - T, Me - **97** (Sam.1127)
- + *Securigera varia* (L.) Lassen {= *Coronilla varia* L.} - H, EA - **81** (Sam.1084)
- + *Spartium junceum* L. - P, Me - obs.
- + *Trifolium angustifolium* L. - T, EA - **10** (Sam.108), **21** (Sam.521), **29** (Sam.670)
- + *Trifolium arvense* L. - T, Pt - W&W (2008:156), **31** (Sam.683), **24** (Sam.612), **110** (Sam.577)
- + *Trifolium campestre* Schreb. - T, EA - **3** (Sam.109), **22** (Sam.594), **29** (Sam.667), **32** (Sam.701), **57** (Sam.897), **125** (Sam.1136)
- + *Trifolium grandiflorum* Schreb. - T, MS - **1** (Sam.127), **2** (Sam.128), **12** (Sam.129), **24** (Sam.611), **25** (Sam.631), **28** (Sam.657, Sam.1261), **29** (Sam.668), **85** (Sam.1158), **111** (Sam.573)
- + *Trifolium heldreichianum* Hausskn. - G, BA - **7** (Sam.110, Sam.399), **25** (Sam.632), **32** (Sam.695), **33** (Sam.712)
- + *Trifolium hirtum* All. - T, Me - **90** (Sam. 1381)
- + *Trifolium medium* subsp. *balkanicum* Velen. - G, Bk - **14** (Sam.131), **44** (Sam.793), **47** (Sam.823), **49** (Sam.833), **50** (Sam.839), **55** (Sam.885a), **71** (Sam.974), **74** (Sam.987), **80** (Sam.1036), **81** (Sam.1043), **84** (Sam.1078)
- * *Trifolium nigrescens* Viv. - T, Me - W&W (2006:100)
- + *Trifolium ochroleucon* subsp. *roseum* (C. Presl) Lassen in Greuter & Raus - H, Me - B&Q (1976:29), **2** (Sam.112), **3** (Sam.113), **12** (Sam.114), **16** (Sam.448), **19** (Sam.502), **23** (Sam.604), **25** (Sam.633), **29** (Sam.671), **30** (Sam.673), **47** (Sam.824), **48** (Sam.827), **55** (Sam.885b), **83** (Sam.1061)
- + *Trifolium pannonicum* Jacq. - G, ME - **67** (Sam.956), **78** (Sam.1026)
- + *Trifolium patulum* Tausch - G, BI - **24** (Sam.614), **35** (Sam.724), **36** (Sam.743)
- + *Trifolium physodes* M. Bieb. - H, Me - B&Q (1976:29), **1** (Sam.122), **2** (Sam.123), **3** (Sam.124), **12** (Sam.125), **14** (Sam.126), **26** (Sam.642)
- + *Trifolium pignanii* Fauché & Chaub. - G, Bk - B&Q (1976:29), **2** (Sam.115), **4** (Sam.116), **6** (Sam.117), **7** (Sam.118), **11** (Sam.119), **12** (Sam.120), **14** (Sam.121), **27** (Sam.649), **32** (Sam.694), **33** (Sam.713), **85** (Sam.1164), **111** (Sam.576)
- * *Trifolium pratense* L. - H, EA - W&W (2006:100)
- * *Trifolium repens* L. - H, Pt - W&W (2006:101)
- + *Trifolium scabrum* L. - T, EA - **91** (Sam.1374), **97** (Sam.1113)
- + *Trifolium stellatum* L. - T, Me - **19** (Sam.505), **89** (Sam.1215), **112** (Sam.1108), **21** (Sam.556)
- + *Trifolium subterraneum* L. - T, ME - **1** (Sam.130), **19** (Sam.504), **21** (Sam.520), **114** (Sam.1104)
- + *Trifolium tenuifolium* Ten. - T, EM - **24** (Sam.613), **29** (Sam.669), **42** (Sam.775), **54** (Sam.873)
- + *Trifolium tomentosum* L. - T, Me - **125** (Sam.1147)
- * *Trigonella corniculata* (L.) L. subsp. *corniculata* - T, Me - W&W (2006:101)

- + *Tripodion tetraphyllum* (L.) Fourr. {= *Anthyllis tetraphylla* L.} - T, Me - **98** (Sam.582)
- * *Vicia angustifolia* L. {= *Vicia sativa* (L.) Ehrh. subsp. *nigra*} - T, Pt - W&W (2006:103)
- + *Vicia bithynica* (L.) L. - T, Me - **113** (Sam.1211)
- + *Vicia cassubica* L. - H, EA - **4** (Sam.147), **18** (Sam.487), **33** (Sam.714), **35** (Sam.727), **38** (Sam.748)
- * *Vicia cracca* L. - H, Ct - W&W (2006:103)
- Vicia grandiflora* Scop. - T, ME - W&W (2008:168), **2** (Sam.132), **3** (Sam.133, Sam.134), **7** (Sam.136, Sam.137), **10** (Sam.138), **26** (Sam.643), **28** (Sam.1258), **30** (Sam.675), **31** (Sam.684), **32** (Sam.696, Sam.700), **41** (Sam.766), **42** (Sam.772, Sam.779), **45** (Sam.813), **67** (Sam.957a), **117** (Sam.708)
- + *Vicia hirsuta* (L.) Gray - T, Pt - **2** (Sam.139), **3** (Sam.140, Sam.141), **10** (Sam.142), **15** (Sam.404), **16** (Sam.447), **18** (Sam.486), **19** (Sam.499), **21** (Sam.518)
- + *Vicia incisa* M. Bieb. {= *V. sativa* L. subsp. *incisa* (M.Bieb.) Arcang.} - T, EM - **2** (Sam.145), **3** (Sam.146), **32** (Sam.693)
- + *Vicia lathyroides* L. - T, ME - **1** (Sam.143), **3** (Sam.144), **13** (Sam.149), **15** (Sam.407), **21** (Sam.519b), **38** (Sam.747), **44** (Sam.790), **54** (Sam.871), **57** (Sam.896), **76** (Sam.1005), **77** (Sam.1010), **78** (Sam.1097), **79** (Sam.1251), **103** (Sam.s.n.), **114** (Sam.1105)
- + *Vicia pannonica* subsp. *striata* (M. Bieb) Nyman - T, ME - **103** (Sam.s.n.)
- + *Vicia pubescens* (DC.) Link - T, Me - **15** (Sam.405), **89** (Sam.1216)
- + *Vicia tenuifolia* subsp. *dalmatica* (A. Kern.) Greuter in Greuter & Raus - H, ME - **19** (Sam.500)
- + *Vicia tetrasperma* (L.) Shreb. - T, Pt - **17** (Sam.406), **19** (Sam.501), **29** (Sam.666), **34** (Sam.720)
- Vicia villosa* subsp. *varia* (Host) Corb. - T, ME - B&Q (1976:29), **105** (Sam.541)

FAGACEAE

- Castanea sativa* Mill. - P, Eu - B&Q (1976:29), **81** (Sam.1040), **82** (Sam.1052)
- + *Quercus coccifera* L. - P, Me - **4** (Sam.25)
- Quercus frainetto* Ten. - P, BA - B&Q (1976:29), **1** (Sam.26), **3** (Sam.34), **4** (Sam.37), **5** (Sam.35, Sam.36b), **7** (Sam.28), **11** (Sam.27, Sam.39), **14** (Sam.44), **24** (Sam.621), **25** (Sam.628), **26** (Sam.638), **27** (Sam.647), **89** (Sam.1212)
- + *Quercus petraea* subsp. *polycarpa* (Schur) Soó - P, Eu - **4** (Sam.29), **11** (Sam.30), **12** (Sam.31), **13** (Sam.32), **26** (Sam.639), **80** (Sam.1034, Sam.1089), **93** (Sam.1071), **115** (Sam.1086)
- Quercus pubescens* Willd. - P, ME - B&Q (1976:15), **1** (Sam.33), **5** (Sam.36a), **4** (Sam.38), **11** (Sam.40), **14** (Sam.41, Sam.43, Sam.45)

FUMARIACEAE

- + *Corydalis cava* (L.) Schweigger & Körte - G, EA - **78** (Sam.1094)
- + *Fumaria officinalis* L. subsp. *officinalis* - T, Pt - **105** (Sam.543)

GENTIANACEAE

- + *Blackstonia perfoliata* (L.) Huds. subsp. *perfoliata* - T, ME - obs.
- + *Centaurium erythraea* Rafn s.lat. - T H, EA - **24** (Sam.623, Sam.624)

GERANIACEAE

- + *Erodium cicutarium* (L.) L' Hér. in Aiton - T, Ct - **90** (Sam.1397), **116** (Sam.1131)
- + *Geranium asphodeloides* Burm. f. subsp. *asphodeloides* - H, MS - **3** (Sam.82, Sam.83, Sam.84), **49** (Sam.841), **52** (Sam.855)
- + *Geranium columbinum* L. - T, EA - **1** (Sam.85), **117** (Sam.710)
- + *Geranium dissectum* L. - T, EA - **21** (Sam.553)
- Geranium lucidum* L. - T, EA - W&W (2008:91), **1** (Sam.86), **12** (Sam.87), **44** (Sam.799)

- + *Geranium peloponesiacum* Boiss. - H, Bk - 119 (Sam.530), **18** (Sam.489), **28** (Sam.1256), **39** (Sam.755), **44** (Sam.798), **52** (Sam.854), **79** (Sam.1030)
- + *Geranium pusillum* Burm. f. - T, EA - **15** (Sam.413)
- + *Geranium molle* L. - T, Pt - **1** (Sam.88)
- + *Geranium purpureum* Vill. - T, Me - **1** (Sam.89), **3** (Sam.90), **13** (Sam.91), **14** (Sam.92), **15** (Sam.414), **16** (Sam.453), **34** (Sam.721), **85** (Sam.1161), **89** (Sam.1231)
- + *Geranium rotundifolium* L. - T, Pt - **1** (Sam.93)

HYPERICACEAE (GUTTIFERAE)

- + *Hypericum perforatum* L. - H, Me - **23** (Sam.606)
Hypericum perforatum L. subsp. *veronense* (Schrank) A. Fröhl. - H, Pt - W&W (2006:73), **7** (Sam.397)
- + *Hypericum spruneri* Boiss. - H, BI - **2** (Sam.95), **3** (Sam.96), **4** (Sam.94), **15** (Sam.412), **23** (Sam.605), **24** (Sam.620), **26** (Sam.641), **30** (Sam.676), **52** (Sam.862), **62** (Sam.923), **66** (Sam.950), **77** (Sam.1013)

JUGLANDACEAE

- + *Juglans regia* L. - P, ME - obs.

LAMIACEAE (LABIATAE)

- + *Ajuga reptans* L. - G, EA - **64** (Sam.936), **120** (Sam.532)
- * *Ballota nigra* L. - H, EA - W&W (2006:46)
- + *Clinopodium alpinum* subsp. *meridionale* (Nyman) Govaerts {= *Acinos alpinus* subsp. *meridionalis* (Nyman) P.W. Ball; *Satureja alpina* subsp. *meridionalis* (Nyman) Greuter & Burdet} - H, Me - **90** (Sam.1395)
- + *Clinopodium grandiflorum* (L.) Kuntze {= *Calamintha grandiflora* (L.) Moench; *Satureja grandiflora* (L.) Scheele} - H, ME - **53** (Sam.865)
- * *Clinopodium nepeta* subsp. *glandulosum* (Req.) Govaerts {= *Calamintha nepeta* subsp. *glandulosa* (Req.) P.W. Ball} - H, ME - W&W (2008:62)
Clinopodium vulgare subsp. *orientale* Bothmer {= *Satureja vulgaris* subsp. *orientalis* (Bothmer) Greuter & Burdet, "C. vulgare subsp. arundanum (Boiss.) Nyman"} - H, Me - B&Q (1976:29), **91** (Sam.1379), **3** (Sam.239), **4** (Sam.238), **15** (Sam.429), **17** (Sam.474), **19** (Sam.512), **22** (Sam.593), **83** (Sam.1060)
- + *Lamium bifidum* subsp. *balkanicum* Velen. - T, Bk - **1** (Sam.246), **3** (Sam.247), **79** (Sam.1254), **87** (Sam.1186)
- + *Lamium bifidum* Cirillo subsp. *bifidum* - T, Me - **104** (Sam.390)
- + *Lamium garganicum* L. subsp. *garganicum* - H, Me - 14 (Sam.248, Sam.249), **55** (Sam.886), **65** (Sam.946), **82** (Sam.1049), **84** (Sam.1079), **122** (Sam.1098)
- + *Lamium purpureum* L. - T, EA - **104** (Sam.395)
- * *Marrubium peregrinum* L. - H, Eu - W&W (2006:77)
- + *Melissa officinalis* L. subsp. *officinalis* - H, Me - **132** (Sam.1032)
- * *Melittis melissophyllum* subsp. *albida* (Guss.) P.W. Ball - H, Eu - B&Q (1976:29)
- * *Mentha spicata* subsp. *condensata* (Briq.) Greuter & Burdet {= *Mentha microphylla* K. Koch} - H, Me - W&W (2006:78)
- * *Mentha pulegium* L. - H, Me - W&W (2006:79)
- * *Micromeria graeca* (L.) Rchb. subsp. *graeca* - C, Me - B&Q (1976:15)
- + *Origanum vulgare* subsp. *hirtum* (Link) A. Terracc. - H G, BA - **1** (Sam.245), **16** (Sam.458), **21** (Sam.526), **22** (Sam.592), **52** (Sam.859)
- + *Phlomis fruticosa* L. - P, Me - **1** (Sam.244)

- + *Prunella vulgaris* L. - H, EA - **54** (Sam.877)
- + *Salvia argentea* L. - H, Me - **91** (Sam.1363)
- + *Scutellaria columnae* All. subsp. *columnae* - H, Me - **26** (Sam.645), **18** (Sam.491), **53** (Sam.866)
- + *Stachys germanica* subsp. *heldreichii* (Boiss.) Hayek - H, EM - **90** (Sam.1390)
- + • *Stachys graeca* Boiss. & Heldr. in Boiss. {"Stachys acutifolia Bory & Chaub."} - H, Endem. - **15** (Sam.437), **20** (Sam.516), **117** (Sam.711)
- * *Teucrium capitatum* L. subsp. *capitatum* - C, Me - B&Q (1976:15)
- + *Teucrium chamaedrys* L. subsp. *chamaedrys* - C, Me - **16** (Sam.464), **22** (Sam.588), **85** (Sam.1173), **91** (Sam.1377)
- * *Teucrium divaricatum* Heldr. s.lat. - C, EM - B&Q (1976:15)
- Thymus longicaulis* subsp. *chaubardii* (Rechb. f.) Jalas {= *Thymus ocheus* Boiss.} - C, BA - B&Q (1976:29), **1** (Sam.240), **3** (Sam.241, Sam.242), **5** (Sam.243), **25** (Sam.636), **26** (Sam.644), **42** (Sam.776), **52** (Sam.858), **59** (Sam.908), **80** (Sam.1038), **90** (Sam.1385)

LORANTHACEAE

- + *Loranthus europaeus* Jacq. - P, EA - obs.

MALVACEAE

- * *Abutilon theophrastii* Medik. - T, EA - W&W (2006:36)
- * *Malva sylvestris* L. - T H, EA - W&W (2006:77)

MORINACEAE

- + *Morina persica* L. - H, MS - obs.

OLEACEAE

- + *Fraxinus angustifolia* subsp. *oxycarpa* (Willd.) Franco & Rocha Afonso - P, EA - **4** (Sam.231), **11** (Sam.232), **14** (Sam.233, Sam.234, Sam.235)
- + *Fraxinus ornus* L. - P, ME - **3** (Sam.236), **14** (Sam.237), **44** (Sam.792)
- Phillyrea latifolia* L. - P, Me - B&Q (1976:15), **3** (Sam.230)

ONAGRACEAE

- * *Epilobium hirsutum* L. - H, EA - W&W (2006:67)
- + *Epilobium lanceolatum* Sebast. & Mauri - H, EA - **65** (Sam.947), **45** (Sam.812), **69** (Sam.965), **77** (Sam.1011)

PAPAVERACEAE

- Papaver rhoeas* L. - T, Pt - W&W (2008:121), obs.

PLANTAGINACEAE

- * *Plantago major* L. subsp. *major* - H, EA - W&W (2008:127)

PLATANACEAE

- + *Platanus orientalis* L. - P, EM - obs.

PLUMBAGINACEAE

- * *Plumbago europaea* L. - C P, Me - W&W (2006:84)

POLYGONACEAE

- * *Persicaria maculosa* Gray - T, EA - W&W (2008:122)

- * *Polygonum arenarium* Waldst. & Kit. - T, EA - W&W (2006:84)
- * *Polygonum arenastrum* Boreau - T, EA - W&W (2006:85)
- * *Polygonum aviculare* L. subsp. *aviculare* - T, Ct - W&W (2006:85)
- * *Rumex pulcher* L. subsp. *pulcher* - H, MS - W&W (2008:138)
- + *Rumex tuberosus* L. subsp. *tuberosus* - G, MS - **13** (Sam.48), **39** (Sam.752), **76** (Sam.1000)
- + *Rumex acetosella* subsp. *acetoselloides* (Balansa) Nijs - H, EA - **90** (Sam.1383)

PRIMULACEAE

- * *Cyclamen graecum* Link subsp. *graecum* - G, EM - W&W (2006:61)
- + *Cyclamen hederifolium* Aiton subsp. *hederifolium* - G, Me - **1** (Sam.228), **3** (Sam.229), **44** (Sam.802), **85** (Sam.1275), **125** (Sam.1273)
- + *Lysimachia atropurpurea* L. - G, BA - **123** (Sam.562)
- + *Lysimachia punctata* L. - H, Eu - **35** (Sam.740), **64** (Sam.935)

PUNICACEAE

- * *Punica granatum* L. - P, X - W&W (2008:132)

RANUNCULACEAE

- + *Anemone apennina* subsp. *blanda* (Schott & Kotschy) Nyman - G, EM - **3** (Sam.49, Sam.50), **45** (Sam.811), **52** (Sam.857), **64** (Sam.933)
- + *Anemone pavonina* Lam. - G, Me - **1** (Sam.51), **3** (Sam.52, Sam.53)
- + *Clematis flammula* L. - P, MS - **3** (Sam.54), **10** (Sam.55), **21** (Sam.527)
- * *Clematis vitalba* L. - P, EA - W&W (2006:57)
- + *Consolida ajacis* (L.) Schur {"Consolida ambigua"} - T, Me - **91** (Sam.1370)
- * *Delphinium peregrinum* L. - T, MS - W&W (2006:63)
- + *Ficaria* subsp. *ficariiformis* (F. W. Schultz) B. Walln. {= *Ranunculus ficaria* subsp. *ficariiformis* (F. W. Schultz) Rouy & Fouc.} - G, Me - **1** (Sam.62), **2** (Sam.63)
- + *Helleborus odorus* subsp. *cyclophyllus* (A. Braun) Maire & Petitm. - G, Bk - B&Q (1976:29), **3** (Sam.56, Sam.57), **4** (Sam.58), **11** (Sam.59), **35** (Sam.732)
- + *Nigella damascena* L. - T, Me - W&W (2008:116), **90** (Sam.1400), **91** (Sam.1369)
- + *Ranunculus gracilis* E. D. Clarke - H, BA - **18** (Sam.494), **120** (Sam.535), **16** (Sam.1093)
- + *Ranunculus neapolitanus* Ten. {= *R. bulbosus* subsp. *neapolitanus* (Ten.) H. Lindb., "R. bulbosus subsp. *aleae* (Willk.) Rouy & Fouc."} - H, Me - **1** (Sam.64), **3** (Sam.65, Sam.66), **6** (Sam.67), **15** (Sam.432), **120** (Sam.534a)
- + *Ranunculus paludosus* Poir. - H, ME - **3** (Sam.60, Sam.61), **15** (Sam.431), **19** (Sam.513), **85** (Sam.1153), **89** (Sam.1223)
- + *Ranunculus psilostachys* Griseb. - H, Bk - **7** (Sam.68), **17** (Sam.476), **18** (Sam.493), **85** (Sam.1160a), **16** (Sam.1239)
- + *Ranunculus velutinus* Ten. - H, Me - **17** (Sam.477), **43** (Sam.786), **78** (Sam.1025), **120** (Sam.534b)

RHAMNACEAE

- + *Paliurus spina-christi* Mill. - P, EA - B&Q (1976:15), **85** (Sam.1160b)

ROSACEAE

- + *Agrimonia eupatoria* L. subsp. *eupatoria* - H, EA - **3** (Sam.215), **1** (Sam.214), **15** (Sam.416), **22** (Sam.591)
- + *Aremonia agrimonoides* (L.) DC. subsp. *agrimonoides* - H, BC - B&Q (1976:29), **1** (Sam.209), **3** (Sam.210, Sam.211, Sam.213), **4** (Sam.212)

- + *Crataegus monogyna* Jacq. - P, Pt - **1** (Sam.204), **10** (Sam.205), **11** (Sam.206), **13** (Sam.207), **14** (Sam.208), **17** (Sam.472)
- + *Geum urbanum* L. - H, EA - **69** (Sam.967), **124** (Sam.1096)
- + *Malus sylvestris* (L.) Mill. subsp. *sylvestris* - P, Eu - **81** (Sam.1085)
- + *Potentilla inclinata* Vill. - H, EA - **35** (Sam.741), **90** (Sam.1398)
- + *Potentilla micrantha* DC. in Lam. & DC. - H, EA - B&Q (1976:29), **3** (Sam.199, Sam.200), **4** (Sam.201), **11** (Sam.202), **27** (Sam.651), **33** (Sam.715), **39** (Sam.754), **40** (Sam.760), **51** (Sam.853), **52** (Sam.861), **83** (Sam.1068)
- + *Prunus avium* (L.) L. - P, EA - **49** (Sam.842), **69** (Sam.962), **70** (Sam.968), **84** (Sam.1074)
- + *Prunus cocomilia* Ten. - P, EM - B&Q (1976:15), obs.
- + *Prunus domestica* subsp. *insittia* (L.) Bonnier & Layens - P, EA - **3** (Sam.190), **7** (Sam.191), **11** (Sam.192, Sam.193), **13** (Sam.194), **14** (Sam.195), **17** (Sam.471), **26** (Sam.640), **34** (Sam.723), **35** (Sam.731), **52** (Sam.860), **64** (Sam.931), **65** (Sam.945), **66** (Sam.948), **76** (Sam.1002), **84** (Sam.1075)
- + *Prunus mahaleb* L. subsp. *mahaleb* - P, EA - **4** (Sam.196), **11** (Sam.197, Sam.198), **44** (Sam.791), **49** (Sam.843), **55** (Sam.884)
- * *Pyrus communis* L. - P, EA - B&Q (1976:29)
- + *Pyrus spinosa* Forssk. {= *P. amygdaliformis* Vill.} - P, Me - **15** (Sam.417), **74** (Sam.986)
- + *Rosa arvensis* Huds. - P, Me - **3** (Sam.182, 183, 401, 402, 403), **4** (Sam.184), **7** (Sam.400), **21** (Sam.524), **45** (Sam.807a), **64** (Sam.929b), **66** (Sam.949), **82** (Sam.1054), **85** (Sam.1166), **88** (Sam.1194), **89** (Sam.1224)
- + *Rosa canina* L. - P, Pt - **10** (Sam.186), **45** (Sam.807b), **56** (Sam.889), **59** (Sam.905), **64** (Sam.930)
- + *Rosa pulverulenta* M. Bieb. {= *R. glutinosa* Sm.} - P, ME - **4** (Sam.187), **11** (Sam.189)
- + *Rosa tomentosa* Sm. in Sm. & Sowerby - C, ME - **64** (Sam.929a), **70** (Sam.970), **82** (Sam.1055), **86** (Sam.1179)
- + *Rubus canescens* DC. - P, EA - **1** (Sam.178), **2** (Sam.179), **3** (Sam.180), **4** (Sam.181), **41** (Sam.762), **64** (Sam.926), **70** (Sam.971), **80** (Sam.1035), **83** (Sam.1069)
- + *Rubus hirtus* Waldst. & Kit. - P, EA - **64** (Sam.927), **81** (Sam.1041), **83** (Sam.1058, Sam.1070)
- + *Rubus sanctus* Schreb. {= *R. ulmifolius* Schott} - P, MS - W&W (2006:88), **64** (Sam.928)
- + *Sanguisorba minor* subsp. *balearica* (Nyman) Muñoz Garm. & C. Navaro {= *S. minor* subsp. *muricata* (Bonnier & Layens) Briq.} - H, EA - **15** (Sam.415), **22** (Sam.597), **100** (Sam.570), **123** (Sam.560)
- + *Sorbus torminalis* (L.) Crantz - P, EA - B&Q (1976:29), **25** (Sam.629), **58** (Sam.904)
- + *Sorbus umbellata* (Desf.) Fritsch in A. Kern. - P, BA - **83** (Sam.1059)

RUBIACEAE

- + *Crucianella angustifolia* L. - T, ME - **7** (Sam.296), **91** (Sam.1376)
- + *Cruciata pedemontana* (Bellardi) Ehrend. - T, EA - **7** (Sam.295)
- + *Galium aparine* L. - T, EA - **1** (Sam.297), **2** (Sam.298), **3** (Sam.299), **11** (Sam.300), **41** (Sam.768), **45** (Sam.810)
- + *Galium heldreichii* Halácsy - H, BA - **16** (Sam.457), **17** (Sam.473), **19** (Sam.511), **22** (Sam.589), **25** (Sam.634), **27** (Sam.655), **30** (Sam.680), **31** (Sam.687), **45** (Sam.808), **48** (Sam.828), **49** (Sam.845), **50** (Sam.838), **60** (Sam.912), **72** (Sam.978b), **85** (Sam.1171), **88** (Sam.1193), **89** (Sam.1226)
- + *Galium hellenicum* Krendl - H, Bk - **22** (Sam.590), **27** (Sam.654), **31** (Sam.688), **37** (Sam.744), **39** (Sam.753), **43** (Sam.787), **44** (Sam.805), **44** (Sam.796), **45** (Sam.809), **47** (Sam.825), **49** (Sam.844), **49** (Sam.834), **50** (Sam.837), **54** (Sam.878), **60** (Sam.911), **62** (Sam.919), **63** (Sam.924), **69** (Sam.966), **72** (Sam.978a), **73** (Sam.981), **76** (Sam.1004), **87** (Sam.1190)
- + *Galium laconicum* Boiss. & Heldr. in Boiss. - H, BA - **72** (Sam.977)
- + *Galium rotundifolium* L. - H, EA - **17** obs.

- * *Rubia peregrina* L. - P, MA - B&Q (1976:15)
- + *Sherardia arvensis* L. - T, EA - **15** (Sam.426), **125** (Sam.1146, Sam.1135), **126** (Sam.1103)

SALICACEAE

- + *Populus alba* L. - P, EA - obs.
- + *Salix alba* L. - P, EA - **130** (Sam.563)
- + *Salix amplexicaulis* Bory & Chaub. in Bory - P, Me - **133** (Sam.536)

SANTALACEAE

- + *Thesium divaricatum* Mert. & W. D. J. Koch - H, ME - **24** (Sam.625), **30** (Sam.679)
- + *Viscum album* subsp. *abietis* (Wiesb.) Abrom. in Wünsche - P, EA - obs.

SAXIFRAGACEAE

- + *Saxifraga carpetana* subsp. *graeca* (Boiss. & Heldr.) D. A. Webb - H, Me - **2** (Sam.69), **28** (Sam.658, Sam.1263), **45** (Sam.815)
- + *Saxifraga rotundifolia* subsp. *chrysosplenifolia* (Boiss.) D. A. Webb - H, Bk - **119** (Sam.531)

SCROPHULARIACEAE

- * *Verbascum blattaria* L. - H, EA - W&W (2006:102)
- + *Verbascum undulatum* Lam. - H, Bk - **91** (Sam.1373)

SOLANACEAE

- * *Lycium chinense* Mill. - P, X - W&W (2006:77)
- * *Solanum nigrum* L. - P, Co - W&W (2006:94)

URTICACEAE

- * *Parietaria judaica* L. {= *Parietaria diffusa* Mert. & W. D. J. Koch} - H, EA - W&W (2008:122)

VERBENACEAE

- * *Verbena officinalis* L. - H, Ct - W&W (2006:103)
- + *Vitex agnus-castus* L. - P, MS - B&Q (1976:15), W&W (2006:104), obs.

VERONICACEAE

- + *Digitalis ferruginea* L. subsp. *ferruginea* - H, ME - B&Q (1976:29), **13** (Sam.227), **72** (Sam.975), **76** (Sam.998, Sam.1087)
- + *Digitalis grandiflora* Mill. - H, Eu - **55** (Sam.882)
- + *Digitalis laevigata* subsp. *graeca* (Ivanina) Werner - H, Bk - **35** (Sam.730), **55** (Sam.883), **72** (Sam.976)
- * *Kickxia commutata* subsp. *graeca* (Bory & Chaub.) R. Fem. - H, EM - W&W (2006:75)
- * *Linaria pelisseriana* (L.) Mill. - T, MS - W&W (2008:104)
- + *Veronica anagallis-aquatica* L. subsp. *anagallis-aquatica* - H T, Co - **134** (Sam.1212)
- + *Veronica arvensis* L. - T, EA - **1** (Sam.218), **32** (Sam.702), **34** (Sam.719), **38** (Sam.749), **56** (Sam.890), **89** (Sam.1222)
- *Veronica chamaedrys* subsp. *chamaedryoides* (Bory & Chaub.) M.A. Fisch. in Strid & Tan - H, Endem. - B&Q (1976:29), **1** (Sam.219), **3** (Sam.220), **Sam.221**, **4** (Sam.222), **83** (Sam.1063)
- + *Veronica cymbalaria* Bodard - T, Me - **1** (Sam.223), **2** (Sam.224), **3** (Sam.225), **15** (Sam.430), **16** (Sam.459), **17** (Sam.475), **18** (Sam.492), **43** (Sam.785b), **79** (Sam.1255), **85** (Sam.1170)
- + *Veronica hederifolia* L. - T, EA - **3** (Sam.226), **78** (Sam.1243)

VALERIANACEAE

- + *Valerianella carinata* Loisel. - T, EA - **15** (Sam.434), **79** (Sam.1253)
- + *Valerianella coronata* (L.) DC. - T, EA - **90** (Sam.1421), **97** (Sam.1112)
- + *Valerianella locusta* (L.) Laterr. - T, EA - **2** (Sam.301), **16** (Sam.462), **29** (Sam.1266), **85** (Sam.1176)

VIOLACEAE

- + *Viola aetolica* Boiss. & Heldr. - H, Bk - **83** (Sam.1065)
- + *Viola alba* subsp. *dehnhardtii* (Ten.) W. Becker - H, Me - **3** (Sam.150, Sam.151), **4** (Sam.152), **10** (Sam.153), **11** (Sam.154), **46** (Sam.822)
- + *Viola kitaibeliana* Schult. in Roem. & Schult. - T, ME - **90** (Sam.1399)

ZYGOPHYLACEAE

- * *Tribulus terrestris* L. - T, Co - W&W (2006:99)

SPERMATOPHYTA – ANGIOSPERMAE**MONOCOTYLEDONEAE****ALLIACEAE**

- + *Allium guttatum* subsp. *tenorei* (Parl.) Soldano {= *A. guttatum* subsp. *sardoum* (Moris) Stearn} - G, Me - **3** (Sam.358), **10** (Sam.359)
- * *Allium sphaerocephalon* L. subsp. *sphaerocephalon* - G, ME - W&W (2008:47)

AMARYLLIDACEAE

- * *Sternbergia lutea* (L.) Spreng. subsp. *lutea* - G, MS - W&W (2006:97)

ARACEAE

- + *Arum cylindraceum* Gasp. {= *A. alpinum* Schott & Kotschy} - G, ME - **7** (Sam.302), **13** (Sam.303), **17** (Sam.480)

ASPARAGACEAE

- Asparagus acutifolius* L. - C, Me - B&Q (1976:15), **5** (Sam.360), **85** (Sam.1155)

ASPHODELACEAE

- + *Asphodelus ramosus* L. subsp. *ramosus* {"*A. aestivus* Brot."} - G, Me - **127** (Sam.552)

CYPERACEAE

- + *Carex distachya* Desf. - H, ME - **15** (Sam.441), **32** (Sam.699), **66** (Sam.952), **67** (Sam.959), **85** (Sam.1159)
- + *Carex divulsa* Stokes - H, EA - **86** (Sam.1177)
- + *Carex flacca* subsp. *serrulata* (Spreng.) Greuter in Greuter & Rech. f. - G, MS - **3** (Sam.305, Sam.304), **17** (Sam.485), **85** (Sam.1152), **86** (Sam.1178), **89** (Sam.1225)
- + *Carex pendula* Huds. - H, EA - **135** (Sam.558)

DIOSCOREACEAE

- + *Dioscorea communis* (L.) Caddick & Wilkin {= *Tamus communis* L.} - G, ME - **17** (Sam.479), **35** (Sam.735), **82** (Sam.1050)

HYACINTHACEAE

- + *Muscari comosum* (L.) Mill. - G, ME - **1** (Sam.361), **17** (Sam.481)
Prospero autumnale (L.) Speta - G, Me - W&W (2006:91), **125** (Sam.1271)

IRIDACEAE

- + *Iris tuberosa* L. {= *Hermodactylus tuberosus* (L.) Mill.} - G, Me - **15** (Sam.439)

JUNCACEAE

- Luzula forsteri* (Sm.) DC. - H, Me - B&Q (1976:29), **2** (Sam.357)

ORCHIDACEAE

- + *Anacamptis morio* subsp. *caucasica* (K. Koch) H. Kretzschmar, Eccarius & H. Dietr. - G, MS - obs.
+ *Cephalanthera longifolia* (L.) Fritsch - G, EA - **35** (Sam.736), **59** (Sam.910)
+ *Cephalanthera rubra* (L.) Rich. - G, EA - **14** (Sam.363), **76** (Sam.1007)
+ *Dactylorhiza romana* subsp. *romana* {= *D. sambucina* (L.) Soó subsp. *pseudosambucina* (Ten.) Sunderm.} - G, Me - **26** (Sam.646), **28** (Sam.664, Sam.1260), **29** (Sam.672, Sam.1267), **39** (Sam.756), **49** (Sam.835)
+ *Epipactis helleborine* (L.) Grantz subsp. *helleborine* - G, Pt - **45** (Sam.818), **48** (Sam.830), **75** (Sam.992), **76** (Sam.1008), **83** (Sam.1066)
+ *Epipactis microphylla* (Ehrh.) Sw. - G, EA - **4** (Sam.365)
+ *Limodorum abortivum* (L.) Sw. - G, Me - **44** (Sam.803)
+ *Neotinea maculata* (Desf.) Stearn - G, Me - **33** (Sam.716), **54** (Sam.881), **57** (Sam.901), **66** (Sam.951), **16** (Sam.1092)
+ *Neottia nidus-avis* (L.) Rich. - G, EA - **41** (Sam.770), **44** (Sam.804), **75** (Sam.994)
* *Ophrys apifera* Huds. - G, ME - H (1985)
* *Ophrys helenae* Renz - G, Bk - T&A (2017)
* *Ophrys holoserica* (Burm. f.) Greuter subsp. *holoserica* - G, Me - H (1985)
Ophrys sphegodes subsp. *mammosa* (Desf.) Soo ex E. Nelson - G, ME - obs., K (1983), H (1985), T&A (2017)
Ophrys sphegodes subsp. *spruneri* (Nyman) E. Nelson - G, EM - obs., H (1985), T&A (2017)
* *Ophrys tenthredinifera* Willd. - G, Me - T&A (2017)
+ *Ophrys umbilicata* Desf. subsp. *umbilicata* - G, Me - obs.
* *Orchis anthropophora* (L.) All. - G, MA - T&A (2017)
Orchis italica Poir. in Lam. & al. - G, Me - **103** (Sam.1236), T&A (2017)
+ *Orchis provincialis* Lam. & DC. - G, ME - **28** (Sam.665), **29** (Sam.1268), **39** (Sam.758), **43** (Sam.784), **44** (Sam.801), **48** (Sam.831), **54** (Sam.880), **55** (Sam.887), **57** (Sam.900), **58** (Sam.903), **59** (Sam.909), **74** (Sam.989), **81** (Sam.1047)
+ *Platanthera chlorantha* (Custer) Rchb. in Mössler - G, ES. - **28** (Sam.663), **35** (Sam.737)
Spiranthes spiralis (L.) Chevall. - G, EA - **85** (Sam.1977), T&A (2017)

POACEAE

- Achnatherum bromoides* (L.) P. Beauv. {= *Stipa bromoides* (L.) Dörfel.} - H, Me - B&Q (1976:15), **3** (Sam.354, Sam.355), **15** (Sam.442), **16** (Sam.466), **19** (Sam.515), **22** (Sam.602), **66** (Sam.953), **89** (Sam.1229)
+ *Aegilops biuncialis* Vis. subsp. *biuncialis* {= *A. lorentii* Hochst.} - T, MS - **90** (Sam.1408)
+ *Aegilops geniculata* Roth - T, Me - **125** (Sam. 1145)
+ *Aira elegantissima* Schur - T, MS - **30** (Sam.678), **31** (Sam.690)
+ *Anthoxanthum odoratum* L. - H, Co - **5** (Sam.306), **15** (Sam.446)

- Arrhenatherum elatius* (L.) J. Presl & C. Presl - H, Pt - B&Q (1976:29), **2** (Sam.307), **3** (Sam.308, Sam.309), **4** (Sam.310), **12** (Sam.314)
- Brachypodium pinnatum* (L.) P. Beauv. - H, ES - B&Q (1976:29), **3** (Sam.318), **40** (Sam.761)
- Brachypodium sylvaticum* (Huds.) P. Beauv. subsp. *sylvaticum* - H, Pt - B&Q (1976:29), W&W (2008:59), **4** (Sam.326), **15** (Sam.443), **17** (Sam.483)
- + *Briza maxima* L. - T, ST - **25** (Sam.637)
- * *Bromus sterilis* L. - T, MS - W&W (2008:61)
- + *Bromus tectorum* L. - T, Pt - **90** (Sam.1414)
- * *Catapodium rigidum* (L.) C. E. Hubb. - T, Me - W&W (2008:67)
- Cynosurus echinatus* L. - T, Me - W&W (2008:79), **3** (Sam.330), **5** (Sam.331)
- Cynosurus effusus* Link. {= *C. elegans* Desf.} - T, Me - B&Q (1976:29), **4** (Sam.329), **12** (Sam.332), **15** (Sam.445), **16** (Sam.1238), **21** (Sam.528), **28** (Sam.1262), **88** (Sam.1195)
- Dactylis glomerata* subsp. *hispanica* (Roth) Nyman - H, Me - B&Q (1976:29), **1** (Sam.334), **3** (Sam.335, Sam.336), **4** (Sam.337)
- + *Dasyphyrum villosum* (L.) P. Candargy - T, MS - **90** (Sam.1410)
- * *Digitaria sanguinalis* (L.) Scop. subsp. *sanguinalis* - T, Co - W&W (2006:63)
- + *Elymus caninus* (L.) L. {= *Agropyron caninum* L.} - H, ES - **22** (Sam.602), **23** (Sam.607)
- + *Elymus panormitanus* (Parl.) Tzvelev {= *Roegneria panormitana* (Parl.) Nevski} - H, Me - **3** (Sam.338), **46** (Sam.821)
- * *Eragrostis cilianensis* (All.) Janch. subsp. *cilianensis* - T, Co - W&W (2006:68)
- * *Eragrostis minor* Host subsp. *minor* - T, Co - W&W (2006:68)
- * *Eragrostis pilosa* (L.) P. Beauv. - T, Co - W&W (2006:68)
- + *Festuca heterophylla* Lam. - H, Eu - **6** (Sam.340), **35** (Sam.738), **37** (Sam.745), **39** (Sam.759), **44** (Sam.806), **47** (Sam.826), **49** (Sam.836, Sam.846), **55** (Sam.888), **57** (Sam.902), **60** (Sam.915), **63** (Sam.925), **68** (Sam.961), **71** (Sam.973), **72** (Sam.980), **129** (Sam.781)
- + *Festuca valesiaca* subsp. *valesiaca* - H, EA - **14** (Sam.342), **75** (Sam.995), **78** (Sam.1028)
- * *Holcus lanatus* L. - H, ES - W&W (2008:95)
- * *Hordeum murinum* L. subsp. *murinum* - T, MS - W&W (2008:96)
- + *Koeleria lobata* (M. Bieb.) Roem. & Schult. {= *K. splendens* C. Presl} - H, Me - **90** (Sam.1412)
- * *Lolium rigidum* Gaudin subsp. *rigidum* - T, ST - W&W (2008:106)
- Melica uniflora* Retz. - H, Pt - B&Q (1976:29), **11** (Sam.344), **14** (Sam.346)
- + *Phleum phleoides* (L.) H. Karst. {= *P. montanum* K. Koch} - H, Eurosib. - **42** (Sam.777), **54** (Sam.879), **90** (Sam.1409)
- * *Phleum subulatum* (Savi) Asch. & Graebn. - T, Me - W&W (2008:124)
- * *Poa annua* L. - T, Co - W&W (2008:127)
- + *Poa bulbosa* L. subsp. *bulbosa* - H, Pt - **2** (Sam.347), **12** (Sam.348), **15** (Sam.440), **16** (Sam.465), **19** (Sam.514), **28** (Sam.1265), **38** (Sam.750), **85** (Sam.1175), **89** (Sam.1227)
- * *Poa nemoralis* L. subsp. *nemoralis* - H, ES - B&Q (1976:29)
- + *Poa trivialis* subsp. *sylvicola* (Guss.) H. Lindb. - H, EA - **1** (Sam.349), **2** (Sam.350), **3** (Sam.351, Sam.352), **17** (Sam.482), **18** (Sam.498), **22** (Sam.603), **24** (Sam.626), **38** (Sam.751), **46** (Sam.820), **81** (Sam.1046), **85** (Sam.1167), **89** (Sam.1218)
- + *Secale strictum* (C. Presl) C. Presl subsp. *strictum* {= *S. montanum* Guss.} - H, MS - **90** (Sam.1413)
- * *Setaria viridis* (L.) P. Beauv. subsp. *viridis* - T, Co - W&W (2006:92)
- * *Sorghum halepense* (L.) Pers. - G, X - W&W (2006:96)
- + *Taenitherum caput-medusae* subsp. *crinitum* (Schreb.) Melderis - T, Me - **90** (Sam.1406)
- * *Tragus racemosus* (L.) All. - T, Co - W&W (2006:99)

RUSCACEAE

- Ruscus aculeatus* L. - G C, ME - B&Q (1976:15), **2** (Sam.362)

Table 1. Numbers of plant families, genera, species, subspecies and taxa in the three main taxonomic groups of the vascular flora of Mt. Goulinas.

	Families	Genera	Species	Subspecies	Specific and subspecific taxa
Pteridophytes	4	4	6	2	6
Gymnosperms	3	3	3	1	3
Angiosperms	74	278	475	139	478
Total	81	285	484	142	487

Spectra and notes on the floristic catalogue – The so far known vascular flora of Mt Goulinas consists of 487 taxa, belonging to 81 families and 285 genera (Table 1). From these, 381 taxa were either collected or observed by the first author, while 106 literature references could not be confirmed. From the total number of taxa, 305 are reported for the first time. Among the new references we can mention *Euphorbia phymatosperma* subsp. *cernua* and *Elymus caninus*, two taxa that are reported for the first time from Sterea Ellas. *Campanula sparsa* subsp. *sphaerothrix*, although not confirmed for Mt Goulinas, was collected by the first author from the neighbour Mt Oxia (unpublished material) and therefore the report from Barbéro & Quézel (1976) may be correct. Six (6) Greek endemics are reported from Mt Goulinas, five (5) of them for the first time: *Abies cephalonica*, *Hieracium bracteolatum* subsp. *reinholdii*, *Alkanna calliensis*, *Erysimum asperulum* and

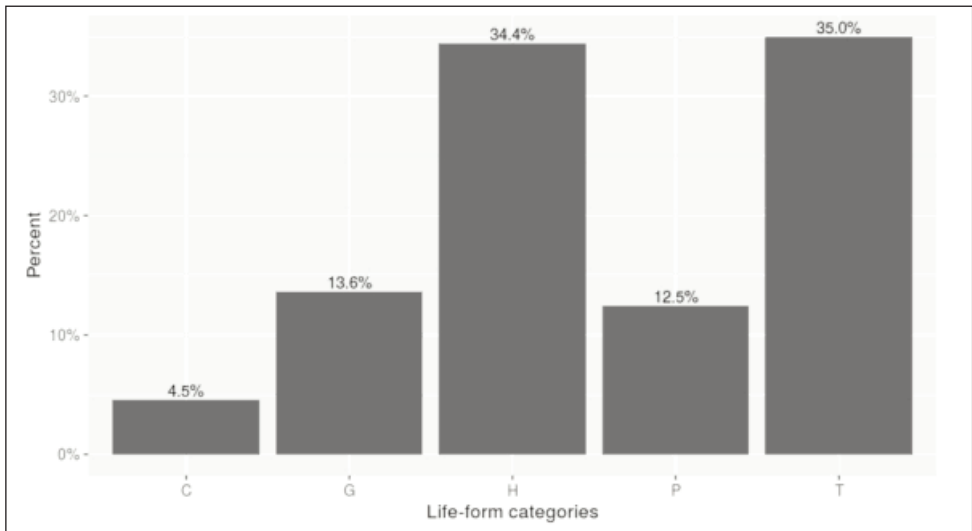


Fig. 2. Life-form spectrum of the vascular flora of Mt Goulinas. P: Phanerophytes, C: Chamaephytes, H: Hemicryptophytes, G: Geophytes, T: Therophytes.

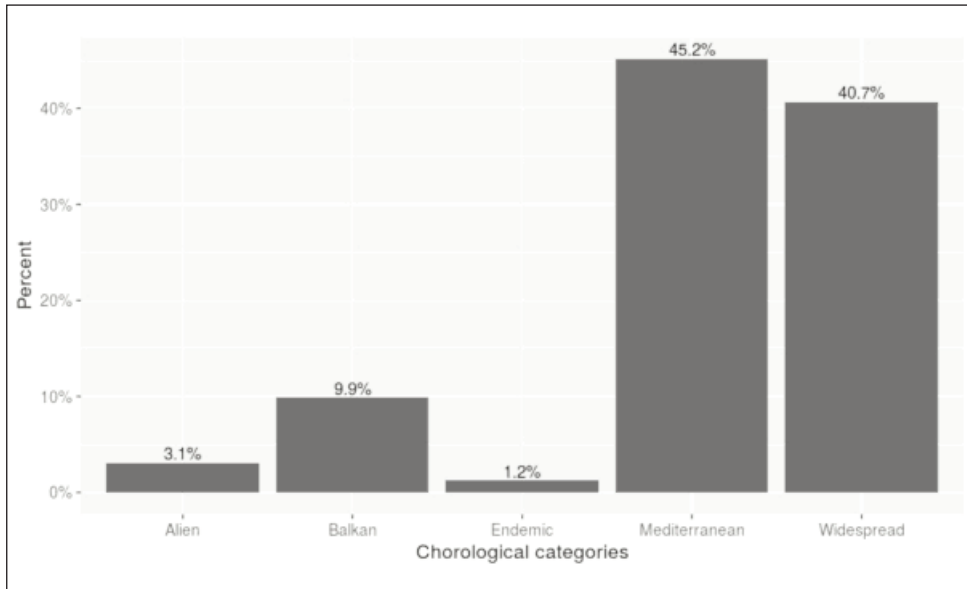


Fig. 3. Chorological spectrum of the vascular flora of Mt Goulinas.

Stachys graeca. Forty eight (48) Balkan and sub-Balkan endemics are also reported, 36 of which are new records for the study area.

Hemicryptophytes and therophytes are the most abundant plant life forms in the flora of Mt Goulinas with a proportion of 34.4 % and 35 % respectively (Fig. 2). Geophytes and phanerophytes follow with 13.6 % and 12.5 % respectively, while chamaephytes are by far the less abundant (4.5 %). The most abundant chorological group of plants are the Mediterranean taxa (220 taxa – 45.2 %), followed by the Widespread taxa (198 taxa – 40.7 %) (Fig. 3). The proportion of Balkan taxa, Greek endemics and Aliens is much lower (9.9 %, 1.2 % and 3.1 % respectively).

Acknowledgements

We are grateful to Günter Gottschlich for verifying or identifying the specimens of the genus *Hieracium*.

References

- Barbéro, M. & Quézel, P. 1976: Les groupements forestiers de Grèce Centro-Méridionale. – *Ecol. Medit.* **2**: 3-86.
- Baumann, H., Künkele, S. & Lorenz, R. 2006: Orchideen Europas mit angrenzenden gebieten. – Stuttgart.
- Boyce, P. 1988: A new classification of *Arum* with keys to the infrageneric taxa. – *Kew Bull.* **44**: 383-395. doi: 10.2307/4110359

- 1994: The genus *Arum* (*Araceae*) in Greece and Cyprus. – Ann. Mus. Goulandris **9**: 27-38.
- Christensen, K. I. 1992: Revision of *Crataegus* Sect. *Crataegus* and Nothosect. *Crataeguineae* (*Rosaceae-Maloideae*) in the Old World. – Syst. Bot. Monogr. **35**: 1-199. doi: 10.2307/25027810
- Dimopoulos, P., Raus, Th., Bergmeier, E., Konstantinidis, T., Iatrou, G., Kokkini, S., Strid, A. & Tzanoudakis, D. 2013: Vascular plants of Greece: An annotated checklist. – Berlin & Athens.
- Hölzinger, J., Künkele, A., Künkele, S. 1985: Die Verbreitung der Gattung *Ophrys* L. auf dem griechischen Festland. – Mitteilungsbl. Arbeitskr. Heim. Orch. Baden-Württemberg **17**: 1-101.
- Kallergis, G. A., Koch, K. E. & Nikolaus, H. J. 1970: Geological map of Greece. – Athens
- Krendl, F. 1986: Die Arten Der *Galium* mollugo-Gruppe in Griechenland. – Bot. Chron. **6-7**: 5-170.
- Künkele, S. 1983: Zum Stand der Orchideenkartierung in Griechenland. – Mitteilungsbl. Arbeitskr. Heim. Orch. Baden-Württemberg **15**: 11-42.
- Phitos, D. 1960: Phytogeographic observations in the Timfristos - Oxia mountain range [in Greek]. – Dasika Chron. **25**: 1099-1105.
- Samaras, D., Theodoropoulos, K. & Eleftheriadou, E. 2008: The plant communities of Greek fir forests (*Abies cephalonica* J.W. Loudon) of Mt. Goulinas (C. Greece). [in Greek with English abstract]. – Forest Res. **21**: 63-78.
- Strid, A. (ed.) 1986: Mountain Flora of Greece, **1**. – Cambridge.
- & Tan, K. (eds.) 1991: Mountain Flora of Greece, **2**. – Edinburgh.
- & Tan, K. (eds.) 1997: Flora Hellenica, **1**. – Königstein.
- & Tan, K. (eds.) 2002: Flora Hellenica, **2**. – Ruggell.
- Tsiftsis, S., Antonopoulos, Z. 2017: Atlas of the Greek Orchids, **2**. – Rethymno.
- Tutin, T. G., Burges, N. A., Chater, A. O., Edmondson, J. R., Heywood, W. H., Moore, D. M., Valentine, D. H., Walters, S. M. & Webb, D. A. (eds.) 1993: Flora Europaea, **1**. – Cambridge.
- , Heywood, V. H., Burges, N. A., Moore, D. M., Valentine, D. H., Walters, S. M. & Webb, D.A. (eds.) 1968-1980: Flora Europaea, **2-5**. – Cambridge.
- Willing, A. & Willing, E. 2006: A Willing contribution to Flora Hellenica. Field records autumn 2005. – Berlin.
- 2008: A Willing contribution to Flora Hellenica. Field records 2007. – Berlin.
- Zielinski, J. 1990: The genus *Rosa* L. in Greece. – Arbr. Kornickie **35**: 3-45.
- Zohary, M. & Heller, D. 1984: The genus *Trifolium*. – Israel.

Addresses of the authors:

Dimitrios A. Samaras^{1,2}, Eleni Eleftheriadou¹, Konstantinos Theodoropoulos¹ & Georgios Karetsos²,

¹Aristotle University of Thessaloniki, School of Forestry and Natural Environment, Laboratory of Forest Botany - Geobotany, P.O. Box 270, University Campus, GR-54124, Thessaloniki, Greece

²Hellenic Agricultural Organization «DEMETER», Institute of Mediterranean Forest Ecosystems, P.O. Box 14180, Terma Alkmanos, Ilisia, GR-11528, Athens, Greece
Corresponding author: Dimitrios A. Samaras, E-mail: mail@dimitrios-samaras.net