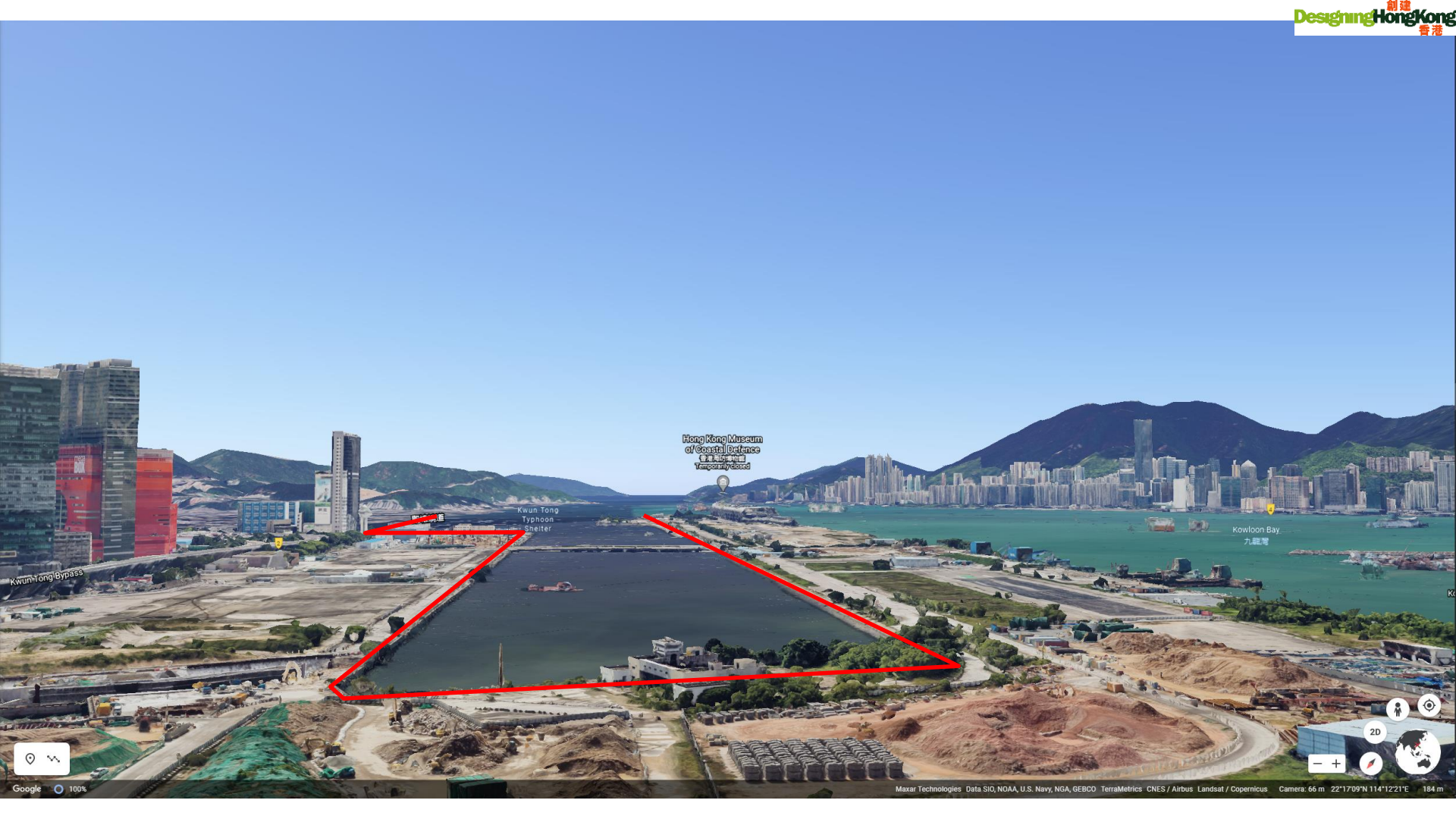


Bring Kai Tak Waterfront alive

讓啟德海濱重生

A proposal to create four activity centres along the Kai Tak waterfront
建議在啟德海濱改劃用地興建四座多用途活動中心



Hong Kong Museum of Coastal Defence
香港海防博物館

Kwun Tong Typhoon Shelter

Kowloon Bay
九龍灣







Hong Kong
香港

Kowloon Park
九龍公園

Avenue of stars
星光大道

Hong Kong
Museum of History
香港歷史博物館

Hung Hom Kwun
Yam Temple
紅興廟

Kowloon Bay
九龍灣

Kai Tak Cruise
Terminal
葵涌郵輪碼頭

Jordan Valley Park
佐敦谷公園

Kwun Tong
Typhoon
Shelter
葵涌風暴潮避風塘

Chinese
International
School
美國國際學校

Hong Kong
Shue Yan
University
香港樹仁大學

St. Joan of Arc
Secondary School
聖貞德中學

Braemar Hill Peak
寶雲山

Fireboat
Alexander
Grantham
Exhibition
香港消防歷史博物館

South China
Athletic Association
南華體育會

Hong Kong Stadium
香港大球場

Braemar Hill
Nursery School
寶雲山幼稚園

Haw Par Mansion
凌霄閣

Hong Kong Police
Mount
Butler Firing Range
香港警察寶雲山射擊場

EOD Depot
危險廢物堆填區

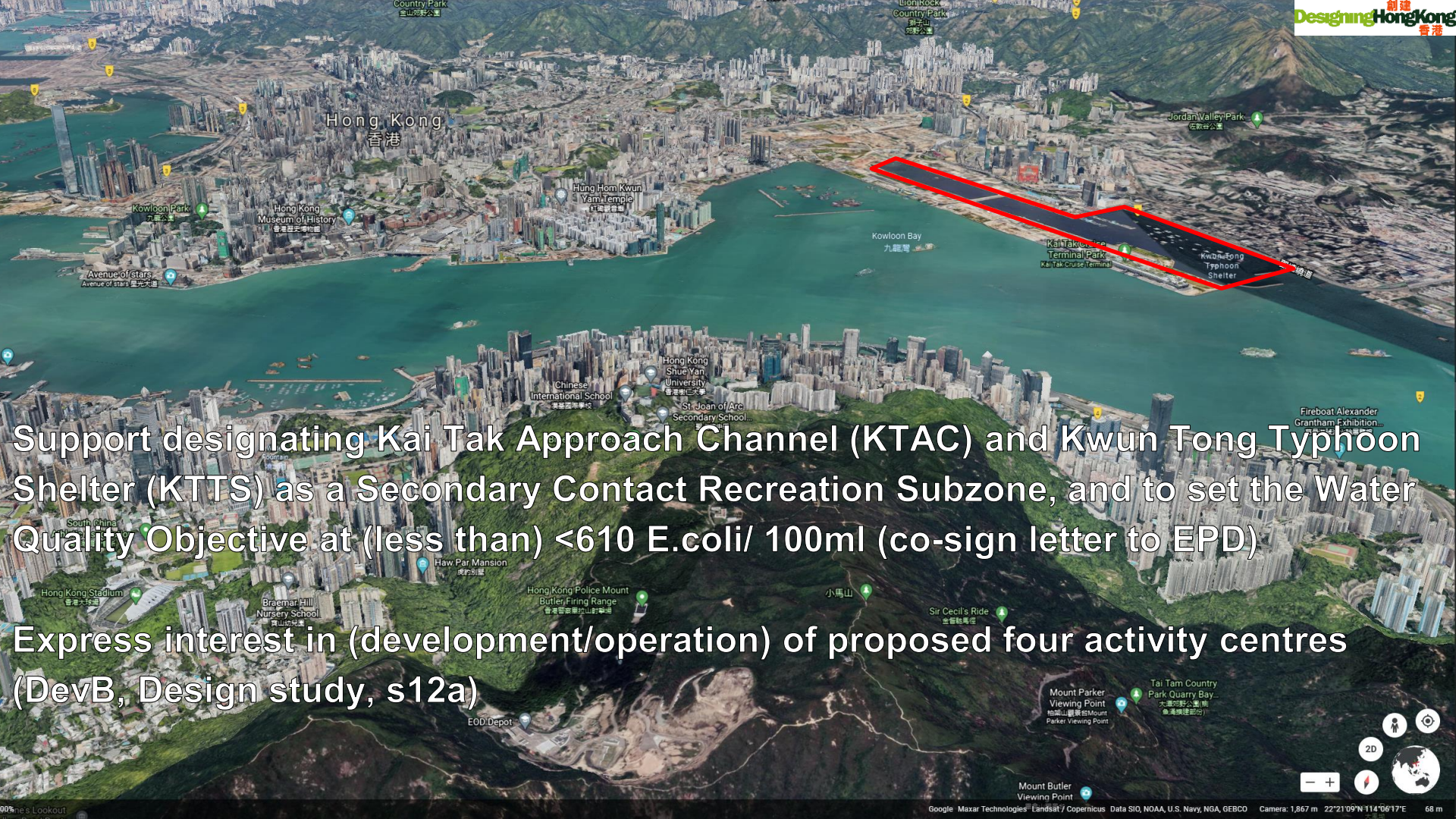
小馬山

Sir Cecil's Ride
金龍鞍馬徑

Mount Parker
Viewing Point
馬鞍山觀景山
Parker Viewing Point

Tai Tam Country
Park Quarry Bay
大潭郊野公園
大潭填海區

Mount Butler
Viewing Point
寶雲山觀景山



Hong Kong
香港

Kowloon Park
九龍公園
Avenue of stars
星光大道
Hong Kong Museum of History
香港歷史博物館

Hung Hom Kwun
Yam Temple
紅梅廟

Kowloon Bay
九龍灣

Kai Tak Approach
Terminal Park
葵涌機場

Jordan Valley Park
佐敦谷公園

Kwun Tong
Typhoon
Shelter
葵涌風雨庇護所

Chinese
International School
中華國際學校

Hong Kong
Shue Yan
University
香港樹仁大學

St. Joan of Arc
Secondary School
聖若望天主教學校

Fireboat Alexander
Grantham Exhibition
亞歷山大消防輪船展覽

Support designating Kai Tak Approach Channel (KTAC) and Kwun Tong Typhoon Shelter (KTTS) as a Secondary Contact Recreation Subzone, and to set the Water Quality Objective at (less than) <math><610 \text{ E.coli} / 100\text{ml}</math> (co-sign letter to EPD)

Express interest in (development/operation) of proposed four activity centres (DevB, Design study, s12a)

South China
香港中文大學

Bremer Hill
Nursery School
百山幼稚園

Haw Par Mansion
康樂別墅

Hong Kong Police Mount
Butler Firing Range
香港警察馬鞍山射擊場

小馬山

Sir Cecil's Ride
金龍船馬徑

Mount Parker
Viewing Point
馬鞍山觀景台

Tai Tam Country
Park Quarry Bay
大潭郊野公園(南)
香港康樂部分

EOD Depot

Mount Butler
Viewing Point

Existing: Victoria Sailing Academic Institution





kaitakyouth

Follow



10 posts

137 followers

79 following

Kai Tak Youth Rowing Community

A charitable community sports club based at Kai Tak

www.ktyrc.org

Existing: Kai Tak Youth Rowing Community (still active??)

POSTS

TAGGED



Events

International Cruise & Yachting Festival by Hong Kong Cruise and Yacht Industry Association at waters off the runway park, November 2020, with temporary interface facilities on barges



Events



Vision: Dreams of getting it right

The pull of a new dragon centre

Multi-purpose stadium complex

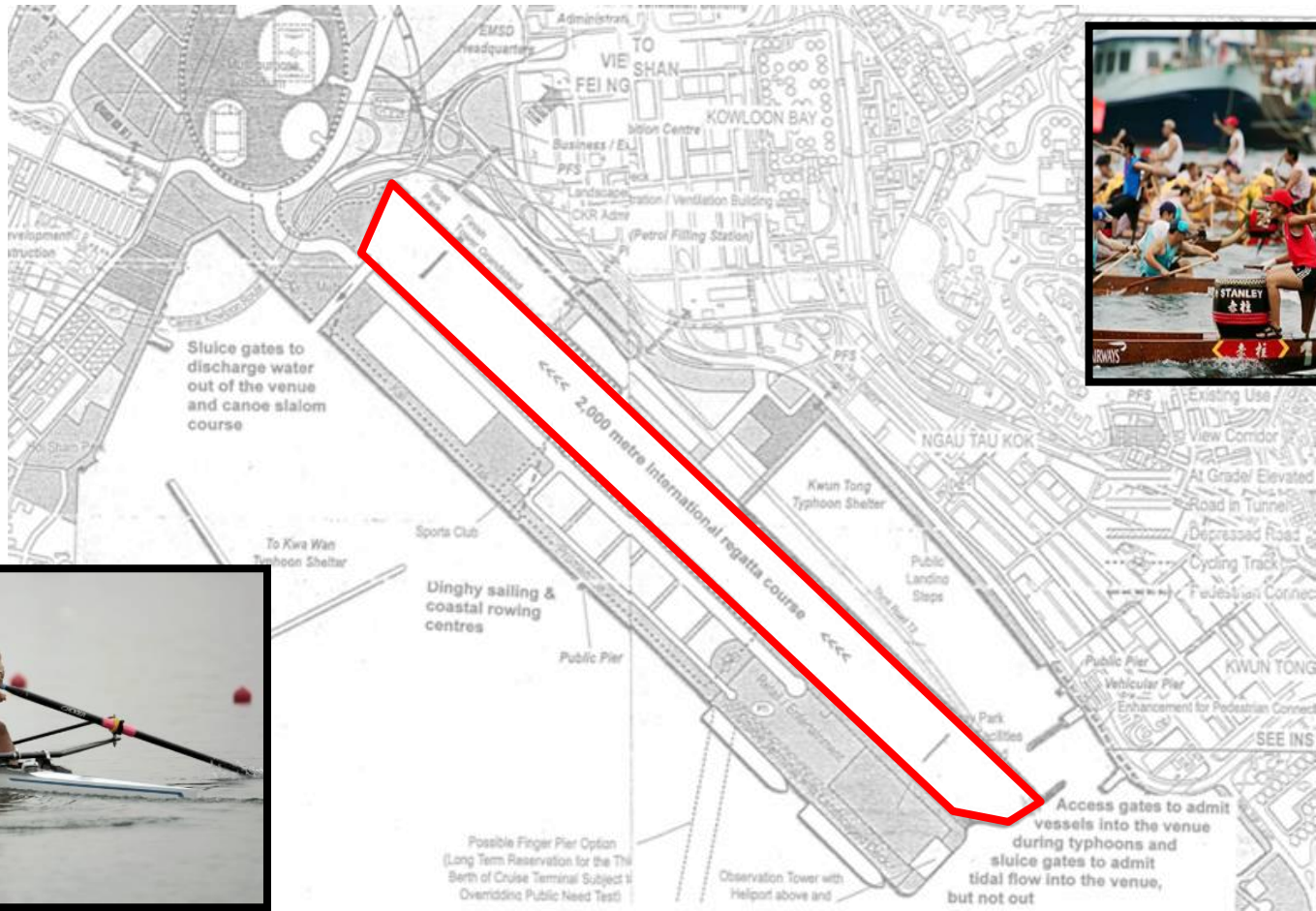
2,000 metres

Sluice gates to discharge water out of the venue and canoe slalom course

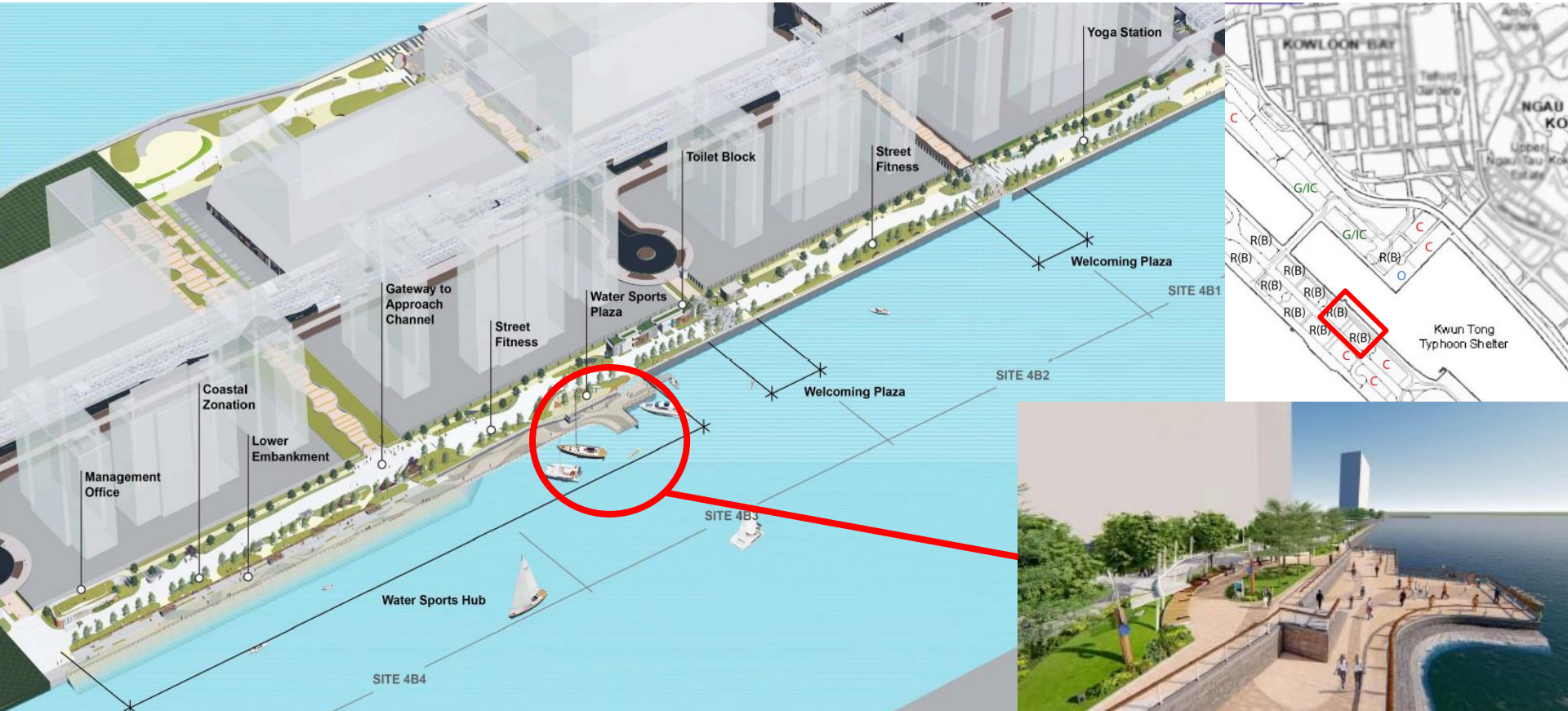
- An international-standard water sports centre in the heart of the city used daily by the community for rowing, canoeing, dragon boating and other aquatic sports and events
- It meets the government's objective of bringing the harbour to the people and the people to the harbour
- It provides health benefits through sports participation by thousands of people who lack access to water-based recreation
- It will be an avenue for international water sports events up to world championship level
- It provides the opportunity to create an 'Olympic Park' with the stadium and the regatta centre located close together and with other sports facilities in the area
- It eliminates the need to remove 600 metres of the old airport runway, as proposed by the government
- It complements the planned multi-purpose stadium and by generating substantial additional use of the area will enhance the stadium's financial viability
- Its tidal-flow management system will each day force about 2 million cubic metres of clean water through the Kai Tak Approach Channel and into the To Kwa Wan Typhoon Shelter, thus flushing the areas much more efficiently than the passive system proposed by the government
- It meets the mandatory requirement to provide an international rowing course for a future Asian Games. Without such a facility, Hong Kong will be unable to bid for the Games

T&P GRAPHIC

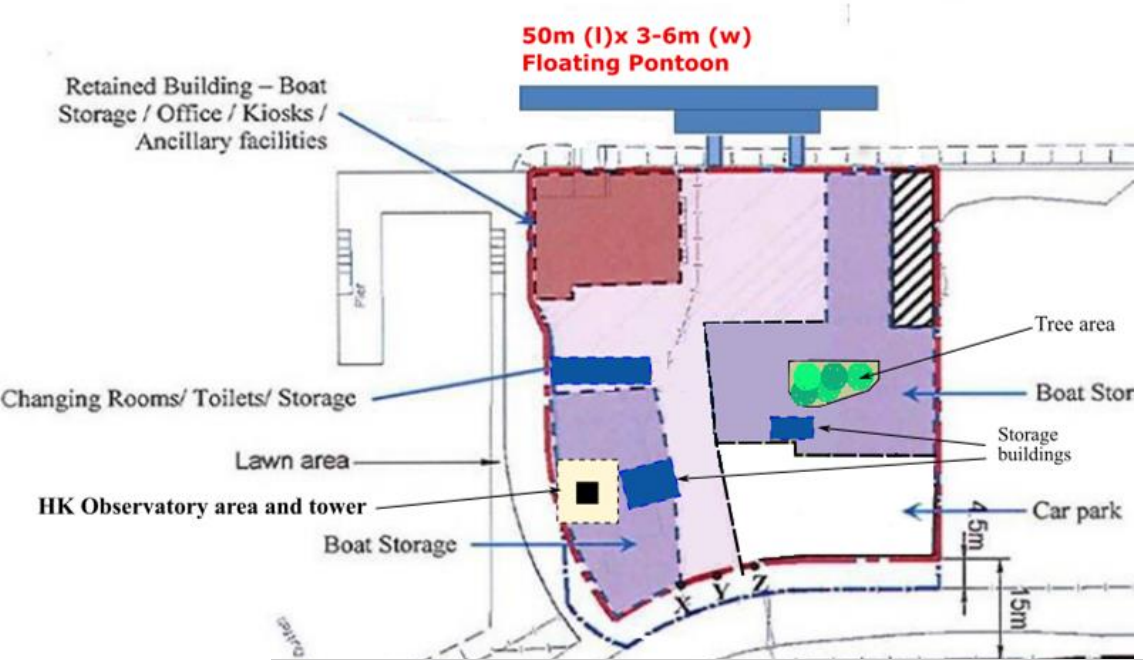
Vision: Dreams of getting it right



Planned at Kai Tak 1: HK Canoe Union: 5yr STT for two storage containers and portable toilets. No road access or F&B.

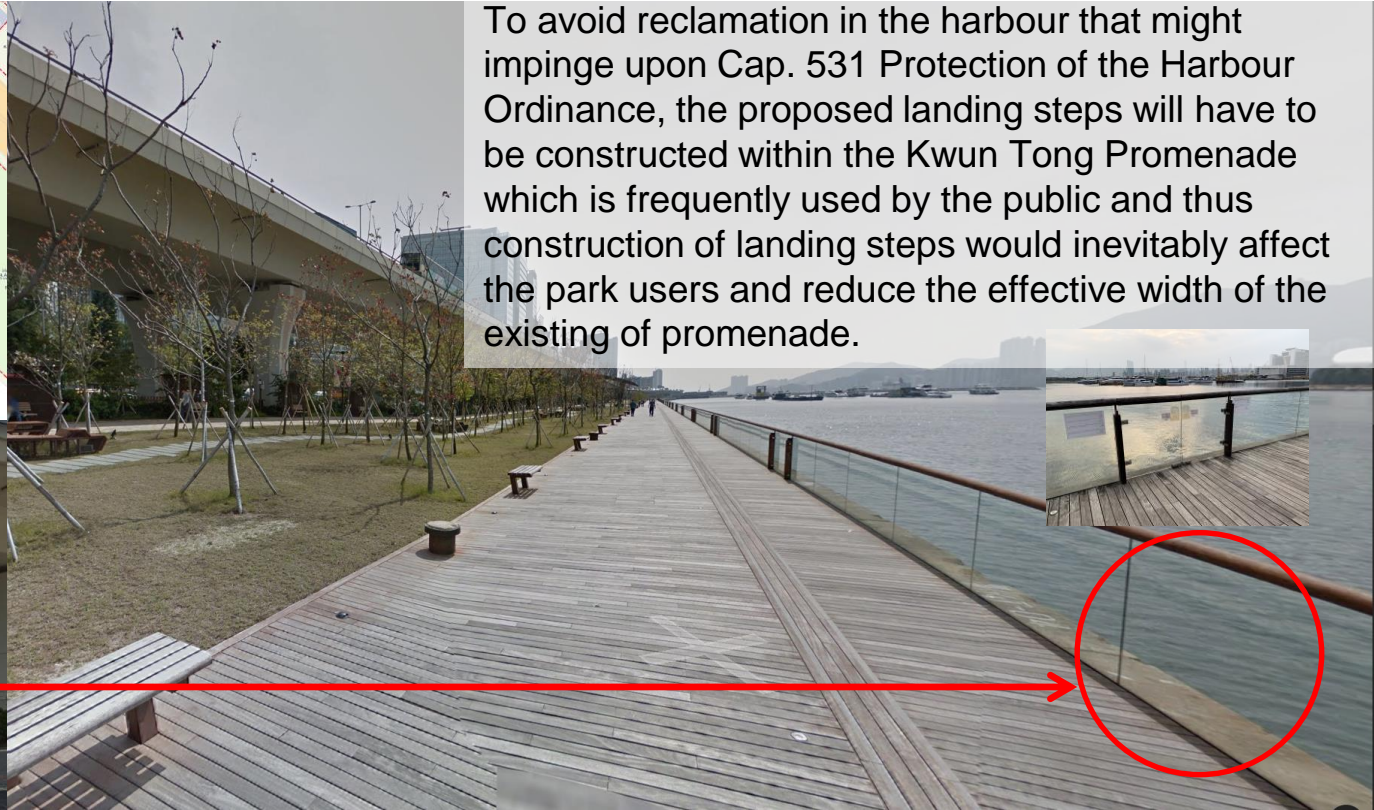


Planned at Kai Tak: Water Sports Council: 5 year STT use of small fire station and temporary structures for outdoor storage.



Site of Ex-Fire Station 前消防局用地:
Temporary Water Sport Centre 臨時水上活動中心

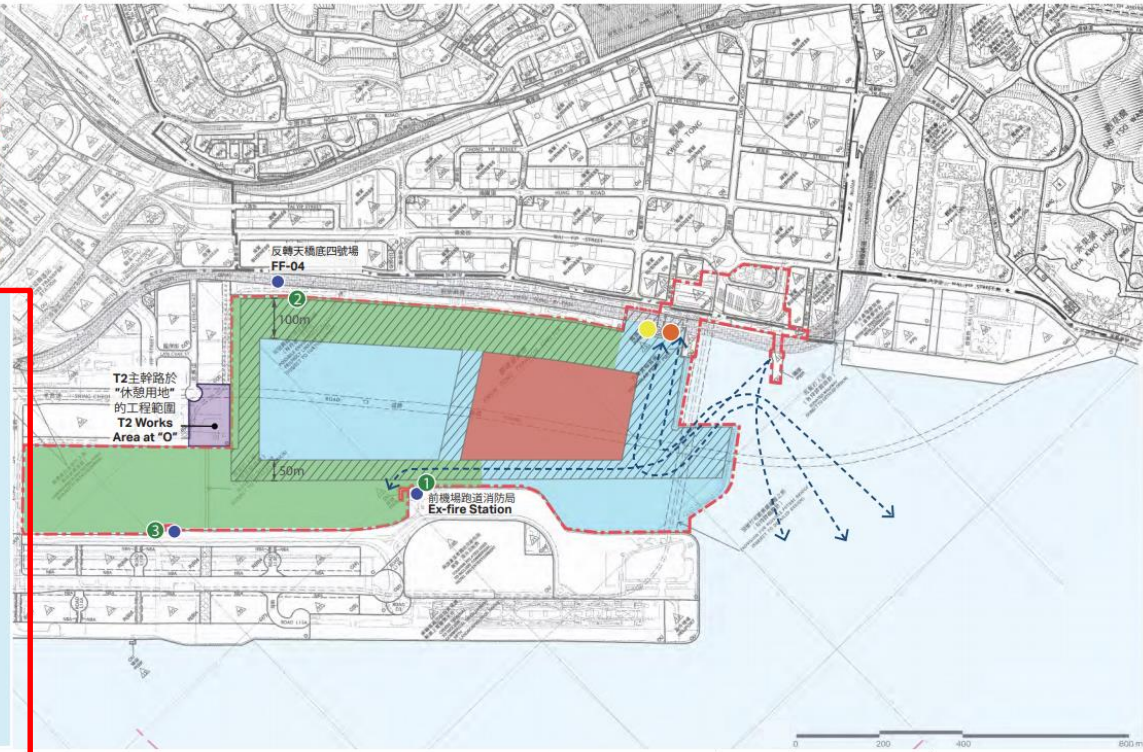
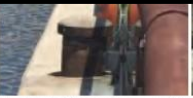
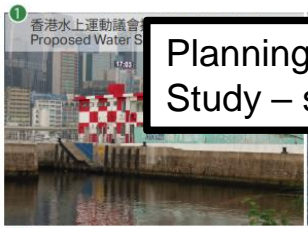
Planned at Kai Tak: Kwun Tong Sports Promotion Association: STT application for site under highway without water access



To avoid reclamation in the harbour that might impinge upon Cap. 531 Protection of the Harbour Ordinance, the proposed landing steps will have to be constructed within the Kwun Tong Promenade which is frequently used by the public and thus construction of landing steps would inevitably affect the park users and reduce the effective width of the existing of promenade.



Planning and Engineering Study on Kwun Tong Action Area – Feasibility Study – shows plans for water recreation near runway park



圖例 LEGEND

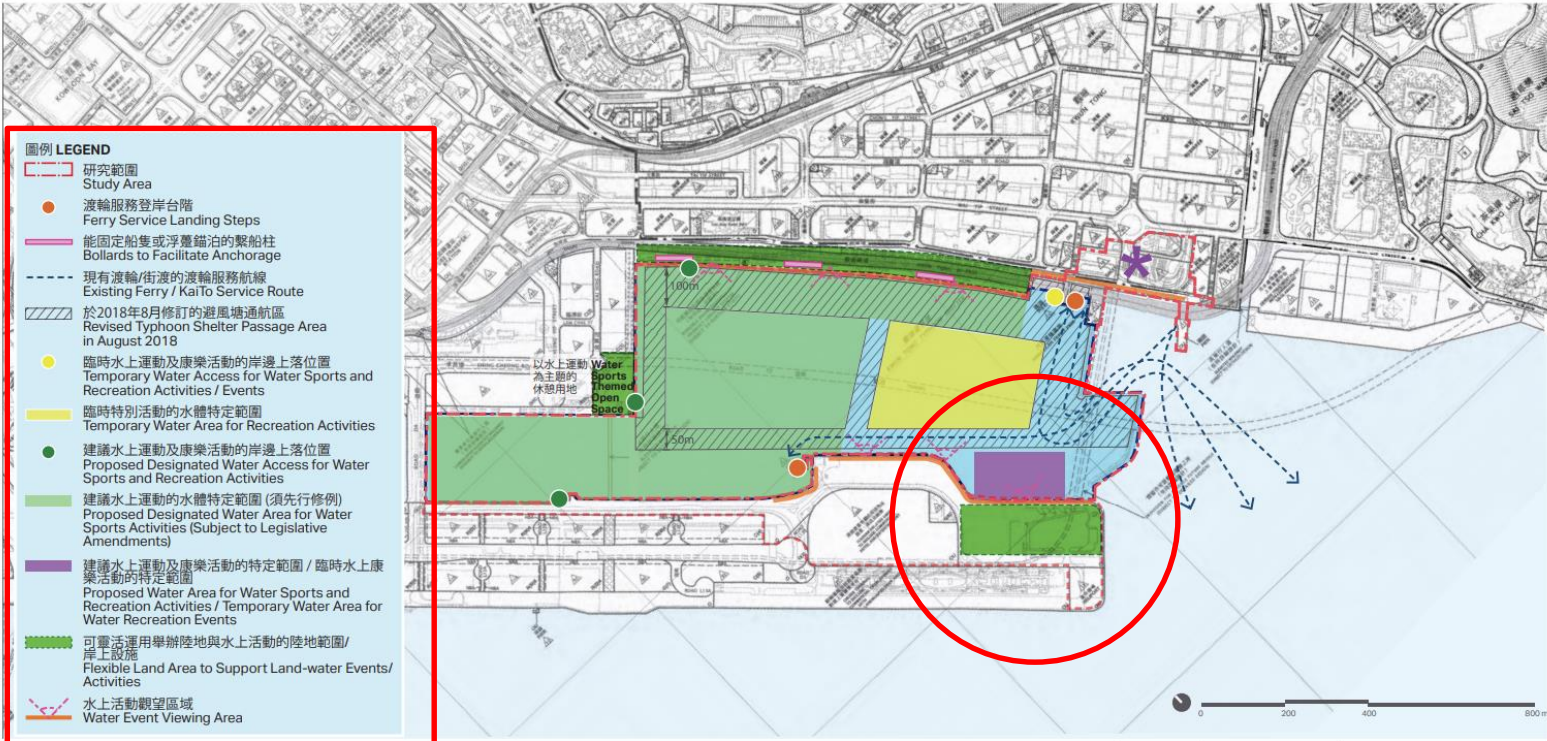
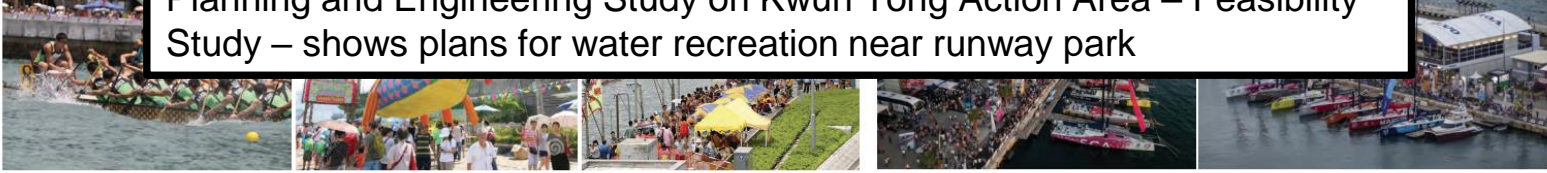
- 研究範圍 Study Area
- 渡輪服務登岸台階 Ferry Service Landing Steps
- 現有渡輪/街渡的渡輪服務航線 Existing Ferry/KaiTo Service Route
- 於2018年8月修訂的避風塘通航區 Revised Typhoon Shelter Passage Area in August 2018
- 建議水上運動/康樂活動及非遊樂船隻停泊的水體共用範圍 Proposed Co-use Area for Water Sports / Recreation Activities and Non-pleasure Vessel Berthing
- 建議水上運動的水體特定範圍 Proposed Designated Water Area for Water Sports Activities
- 臨時水上運動及康樂活動的岸邊上落位置 Temporary Water Access for Water Sports and Recreation Activities / Events
- 建議水上運動及康樂活動的水體特定範圍 Proposed Designated Water Access for Water Sports and Recreation Activities
- 建議以短期租約形式的岸上設施 Proposed Short-Term Tenancy (STT) Sites for Water Sports and Recreation Activities

項目 Project:
 合約編號 CE 61/2015 (TP)
 觀塘行動區發展規劃及工程可行性研究
 Agreement No. CE 61/2015 (TP)
 Planning and Engineering Study on Kwun Tong Action Area – Feasibility Study

標題 Title:
 水體共享短期方案建議
 Proposed Short-term Co-use Proposals in KTTS

日期 Date: 2019年4月 Apr 2019
 比例 Scale: 如圖所示 As Shown
 圖 Plan 9

Planning and Engineering Study on Kwun Tong Action Area – Feasibility Study – shows plans for water recreation near runway park



圖例 LEGEND

- 研究範圍
Study Area
- 渡輪服務登岸台階
Ferry Service Landing Steps
- 能固定船隻或浮籠錨泊的繫船柱
Bollards to Facilitate Anchorage
- 現有渡輪/街渡的渡輪服務航線
Existing Ferry / Kai To Service Route
- 於2018年8月修訂的避風地通航區
Revised Typhoon Shelter Passage Area in August 2018
- 臨時水上運動及康樂活動的岸邊上落位置
Temporary Water Access for Water Sports and Recreation Activities / Events
- 臨時特別活動的水體特定範圍
Temporary Water Area for Recreation Activities
- 建議水上運動及康樂活動的岸邊上落位置
Proposed Designated Water Access for Water Sports and Recreation Activities
- 建議水上運動的水體特定範圍 (須先行修例)
Proposed Designated Water Area for Water Sports Activities (Subject to Legislative Amendments)
- 建議水上運動及康樂活動的特定範圍 / 臨時水上康樂活動的特定範圍
Proposed Water Area for Water Sports and Recreation Activities / Temporary Water Area for Water Recreation Events
- 可靈活運用舉辦陸地與水上活動的陸地範圍 / 岸上設施
Flexible Land Area to Support Land-water Events / Activities
- 水上活動觀望區域
Water Event Viewing Area

項目 Project:
合約編號 CE 61/2015 (TP)
觀塘行動區發展規劃及工程可行性研究
Agreement No. CE 61/2015 (TP)
Planning and Engineering Study on Kwun Tong Action Area – Feasibility Study

標題 Title:
水體共享中長期方案建議
Proposed Medium to Long-term Co-use Proposals in KTTS



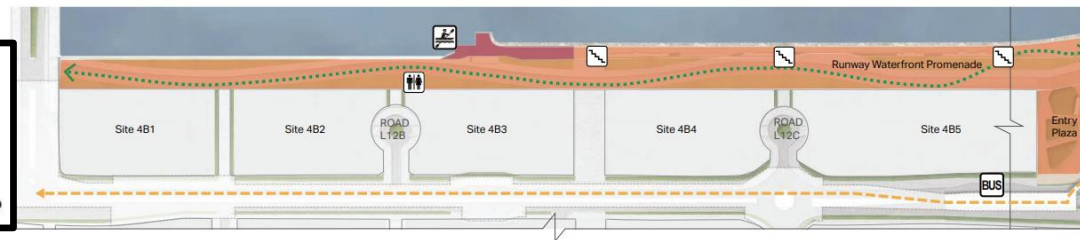
日期 Date: 2019年4月
Apr 2019
比例 Scale: 如圖所示
As Shown

圖 Plan 10

Plans for tourist node and runway park presented to Town Planning Board and Harbourfront Commission lack interface and services support for water recreation in the typhoon shelter

TPB Paper No. 10617
For Consideration by the
Town Planning Board on 10.1.2020

Planning and Urban Design Review for Developments at Kai Tak Runway Tip



- LEGEND**
- - - TN Site
 - Proposed STT Site for Water Sports Organization
 - Runway Waterfront Promenade and Entry Plaza
 - Ex-Fire Station Courtyard
 - Pier Area
 - Internal Promenade
 - Upper Promenade
 - Lower Promenade
 - 45m Setback Area
 - Multi-level Open Space
 - Aviation Themed Park
 - ▨ Temporary Water Sports Centre
 - River Valley
 - Water Feature
 - ★ Major Node
 - Major View Corridor
 - ▽ Public View Point to Open Water
 - Buffer Planting along G/C Site
 - Kai Tak Runway Park Pier
 - Proposed Bike Rental Kiosk
 - Planned/Existing Bus Stop /Proposed Sawtooth PTI
 - Proposed Water Recreation Facility
 - Proposed Public Toilets
 - Proposed Stairway Access to Lower Embankment
 - Exhibition Gallery
- Pedestrian Circulation**
- Major At-Grade Pedestrian Connections
 - Elevated Connections
 - Proposed "Greenway"
- Vehicular Circulation**
- - - Existing/Proposed EVA and Authorized Vehicular Access
 - At-grade EVA / Authorized Vehicle Access to Future TN
 - - - Planned Basement Vehicular Access via Road L14 (Underpass)



Agreement No. CE 73/2014 (TP)
Planning and Urban Design Review for Developments at Kai Tak Runway Tip - Feasibility Study

Overall Planning and Design Framework

Date: Jan 2020
Scale: As shown
Plan 1

Plans for tourist node and runway park presented to Town Planning Board and Harbourfront Commission lack interface and services support for water recreation in the typhoon shelter

TPB Paper No. 10617
For Consideration by the
Town Planning Board on 10.1.2020

Planning and Urban Design Review for Developments at Kai Tak Runway Tip



In paper for MPC on 6 November 2020 there is only mention of a “water sports theme” for the Kai Tak Runway Park, no indication of any interface or services support for water recreation at Kai Tak Runway Park

MPC Paper No. Y/K22/4B
For Consideration by
the Metro Planning Committee
on 6.11.2020

APPLICATION FOR AMENDMENT OF PLAN
UNDER SECTION 12A OF THE TOWN PLANNING ORDINANCE

APPLICATION NO. Y/K22/4

- 11.8 In the medium term, several water sports/recreation proposals are planned in Kai Tak (**Plan Z-3**), including a proposed water recreation facility to be implemented by the developer of the Tourism Node site in Kai Tak Runway Park Phase 2A. For the planned district open space at the South Apron Corner covering Location 4 and its surrounding areas, it has been proposed to adopt a water sports theme in its future development under the KTAA Study.

Site Context

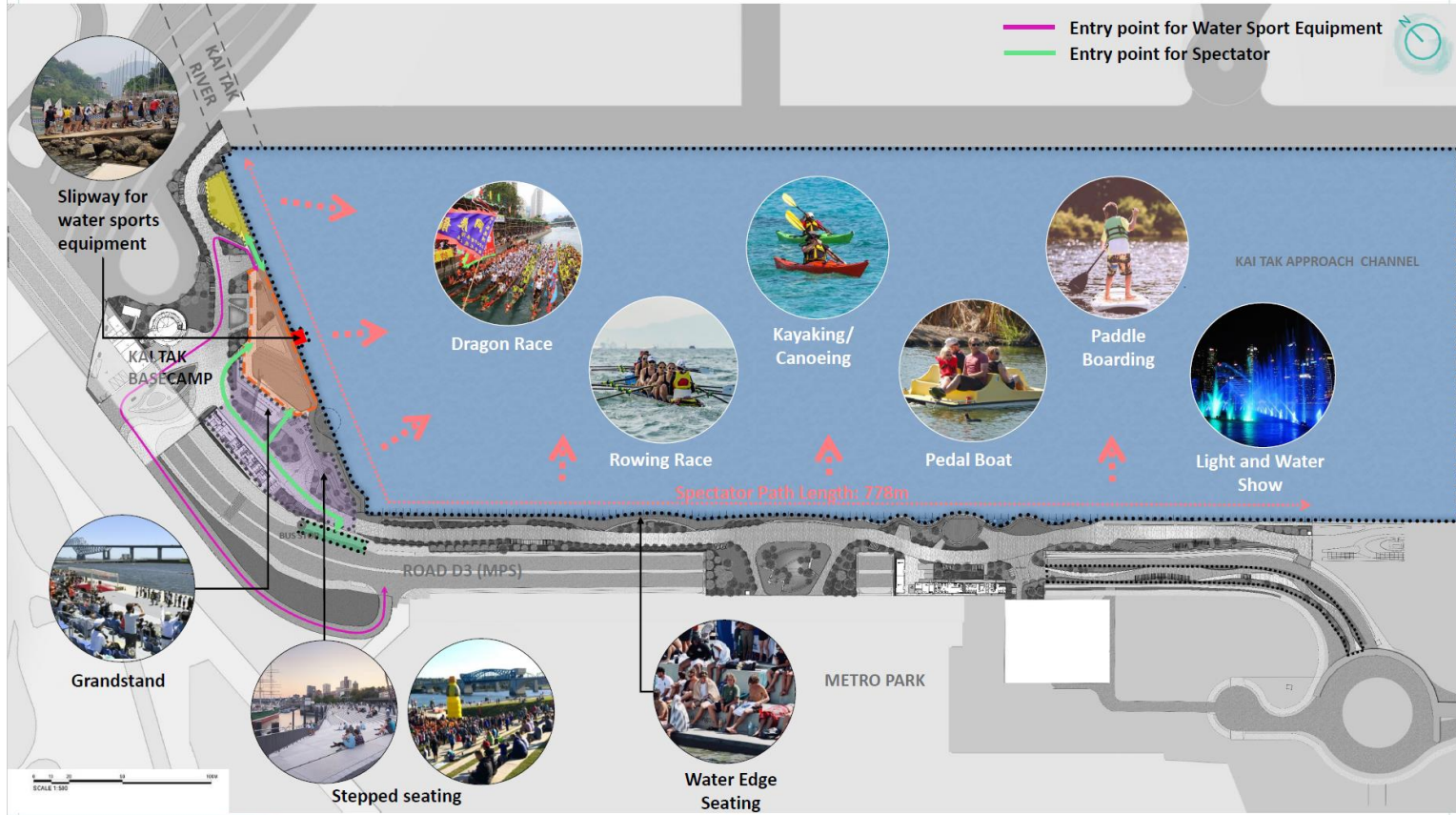
Water Event Scenario

TEMPORARY EVENT USE

Activating the Waterfront

Design the waterfront for the enjoyment of leisure, cultural and recreational activities on land and water.

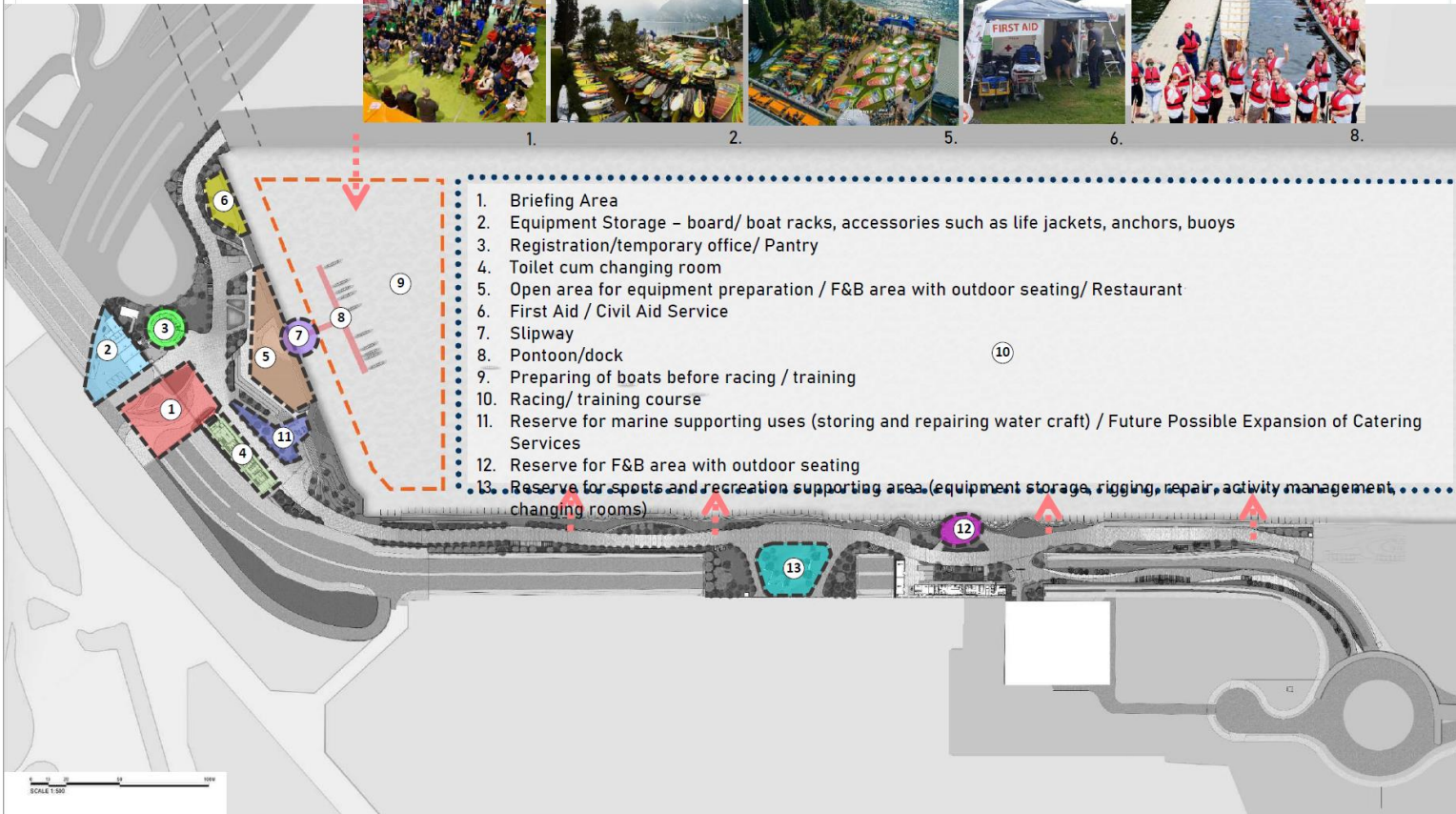
- Entry point for Water Sport Equipment
- Entry point for Spectator



CEDD/LCSD Road D3 Waterfront Plans
Harbourfront Commission Kai Tak Taskforce 7 December 2020

Site Context
Water Events Scenario

TEMPORARY EVENT USE



- 1. Briefing Area
- 2. Equipment Storage – board/ boat racks, accessories such as life jackets, anchors, buoys
- 3. Registration/temporary office/ Pantry
- 4. Toilet cum changing room
- 5. Open area for equipment preparation / F&B area with outdoor seating/ Restaurant
- 6. First Aid / Civil Aid Service
- 7. Slipway
- 8. Pontoon/dock
- 9. Preparing of boats before racing / training
- 10. Racing/ training course
- 11. Reserve for marine supporting uses (storing and repairing water craft) / Future Possible Expansion of Catering Services
- 12. Reserve for F&B area with outdoor seating
- 13. Reserve for sports and recreation supporting area (equipment storage, rigging, repair, activity management, changing rooms)

CEDD/LCSD Road D3 Waterfront Plans
Harbourfront Commission Kai Tak Taskforce 7 December 2020

Kai Tak Basecamp

TEMPORARY EVENT USE

CEDD/LCSD Road D3 Waterfront Plans
Harbourfront Commission Kai Tak Taskforce 7 December 2020



Kai Tak Basecamp

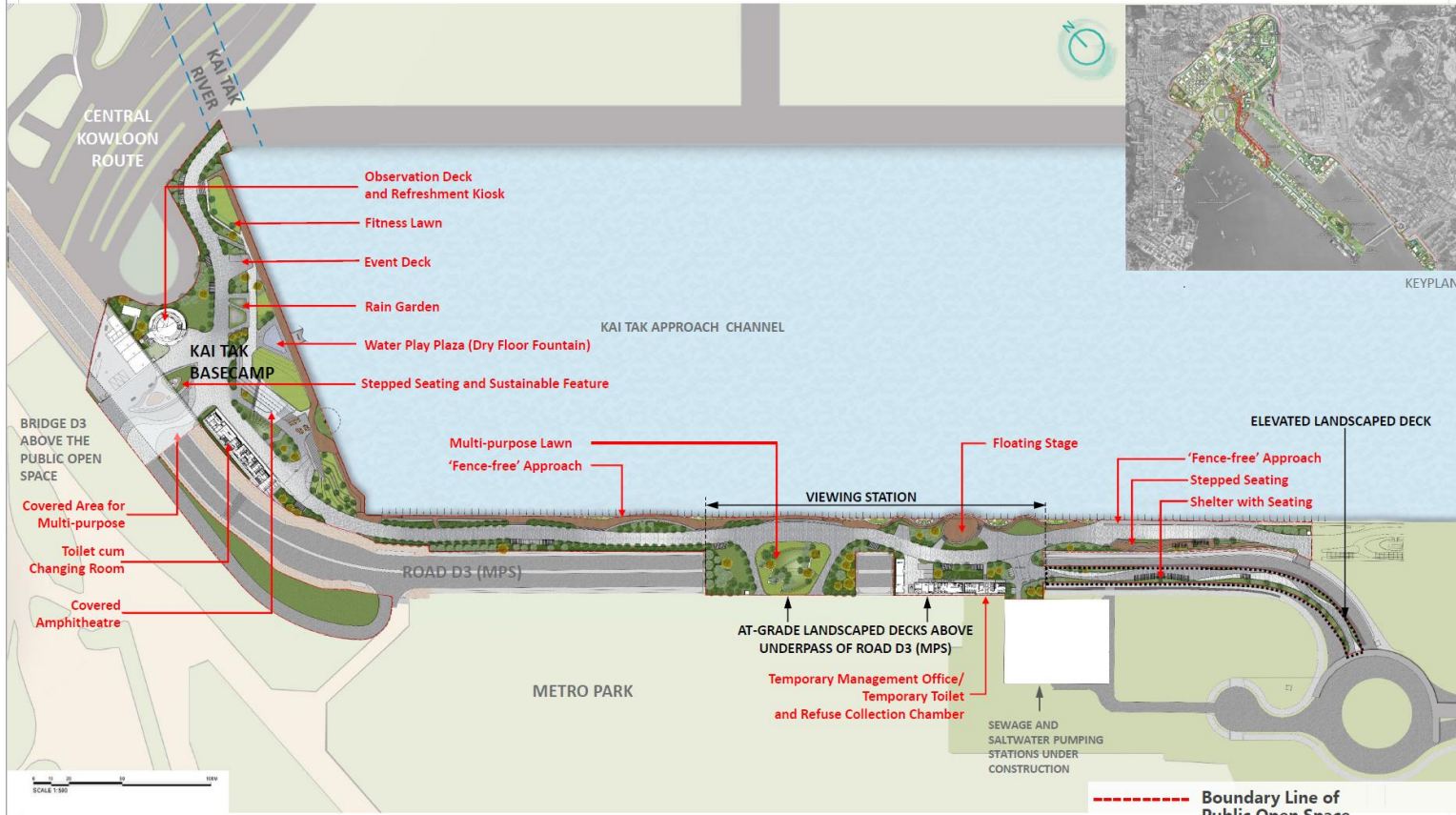
TEMPORARY EVENT USE

CEDD/LCSD Road D3 Waterfront Plans
Harbourfront Commission Kai Tak Taskforce 7 December 2020



Master Layout Plan

PERMANENT USE



*all designs are subject to detailed development

CEDD/LCSD Road D3 Waterfront Plans
 Harbourfront Commission Kai Tak Taskforce 7 December 2020

Kai Tak Basecamp

PERMANENT USE

CEDD/LCSD Road D3 Waterfront Plans Harbourfront Commission Kai Tak Taskforce 7 December 2020

Observation Deck and Refreshment Kiosk
Security Kiosk

Back-of-house facilities
-Nursery
-A Service Yard and Storage Area A
-Horticultural Maintenance Store
-Refuse Collection Chamber
-Loading/Unloading
-Parking Space for Service Yard Storage Area
-F.S. Control Room, F.S. Pump Room, Water Pump, Water Meter Cabinet, TBE Room and Electrical Room

Northern Entrance Plaza

Under-bridge Public Space

Stepped Planter and Sustainable Feature

Covered Area for Multi-purpose

Covered Amphitheatre

Toilet cum Changing Room

-Toilet and Changing Area
-D.G. Store and General Store
-Rainwater and Filtration Plant Room and Water Tank
-F.S. Pump Room and Street Fire Hydrant Tank
-Automatic Irrigation Plant Room, Potable, Flushing & Cleansing Water Pump Room and Electrical Room



Lockable Gate
Fitness Lawn
Event Deck

Rain Garden
Water Play Plaza (Dry Fountain)
Lockable Gate
Step Seating
Theatre Lawn
Wood Grain Porcelain Tile

Step
Access Ramp
Bike Parking



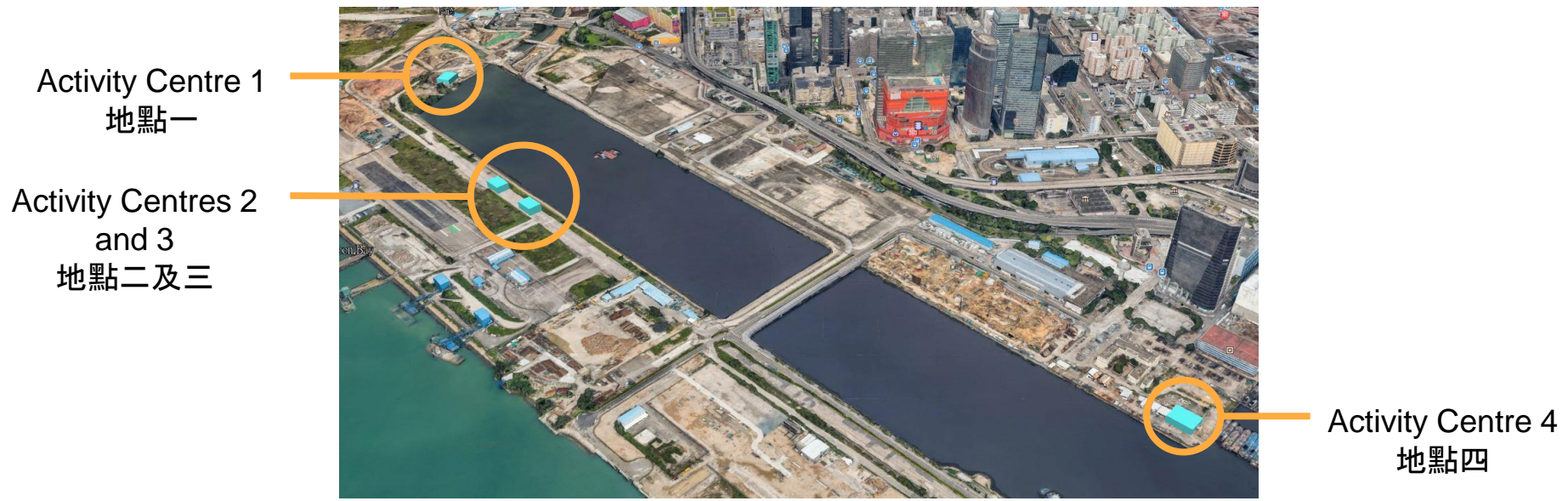
— Main Circulation
— Primary Circulation
— Secondary Circulation
- - - Tertiary Circulation



Designing Hong Kong proposal to create four activity centres along the Kai Tak waterfront

建議在啟德海濱改劃用地興建四座多用途活動中心

Section 12A application by Designing Hong Kong Limited Town Planning Board application no: [Y/K22/4](#)



Activity Centre: Shek Mun Rowing Centre (Shatin)



Boat storage / maintenance

Boat rigging / preparation

Changing room / toilets

Food and beverage

Look out and safety



Activity Centre: Middle Island Royal HK Yacht Club

Boat storage / maintenance

Boat rigging / preparation

Changing room / toilets

Food and beverage

Look out and safety



Activity Centre: Stanley Main Beach Water Sports Centre



Boat storage / maintenance

Boat rigging / preparation

Changing room / toilets

Food and beverage

Look out and safety



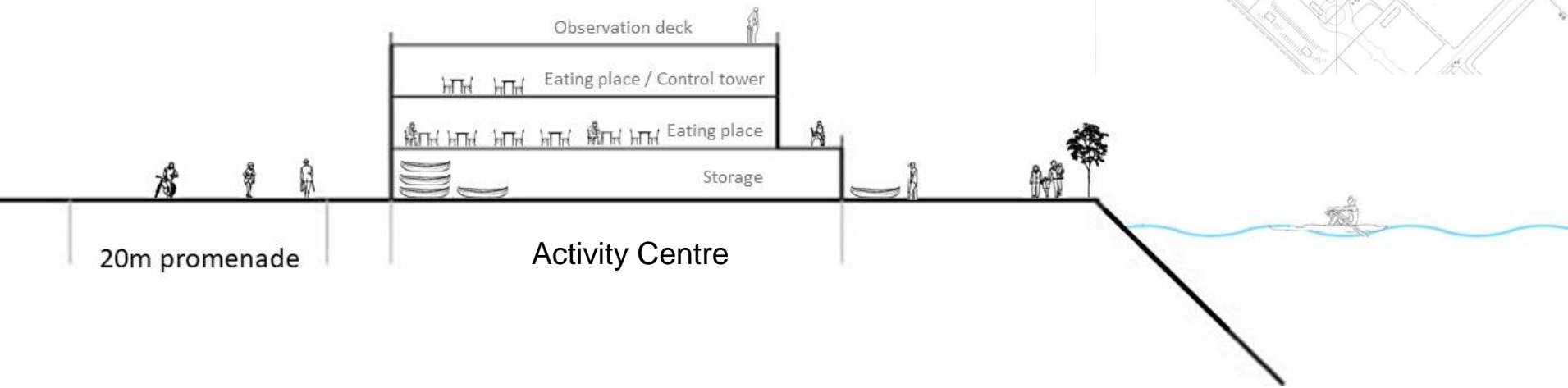
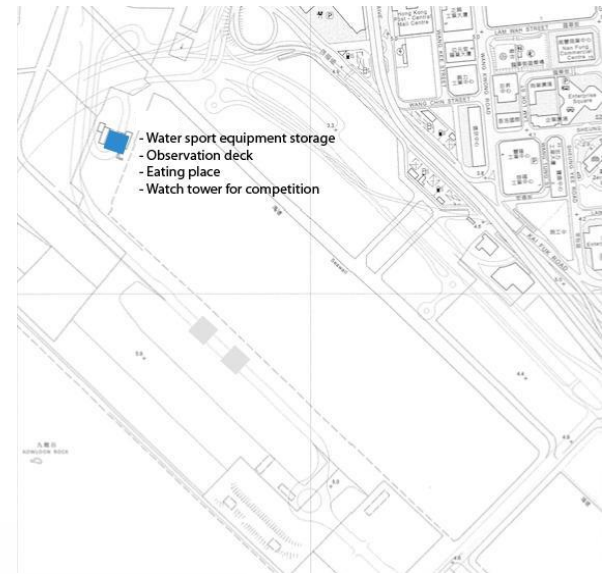
Activity Centre 1 at the head of Kai Tak Approach Channel



Activity Centre 1 at the head of Kai Tak Approach Channel

Site area 1,100 sq.m.

GFA 2,400 sq.m.

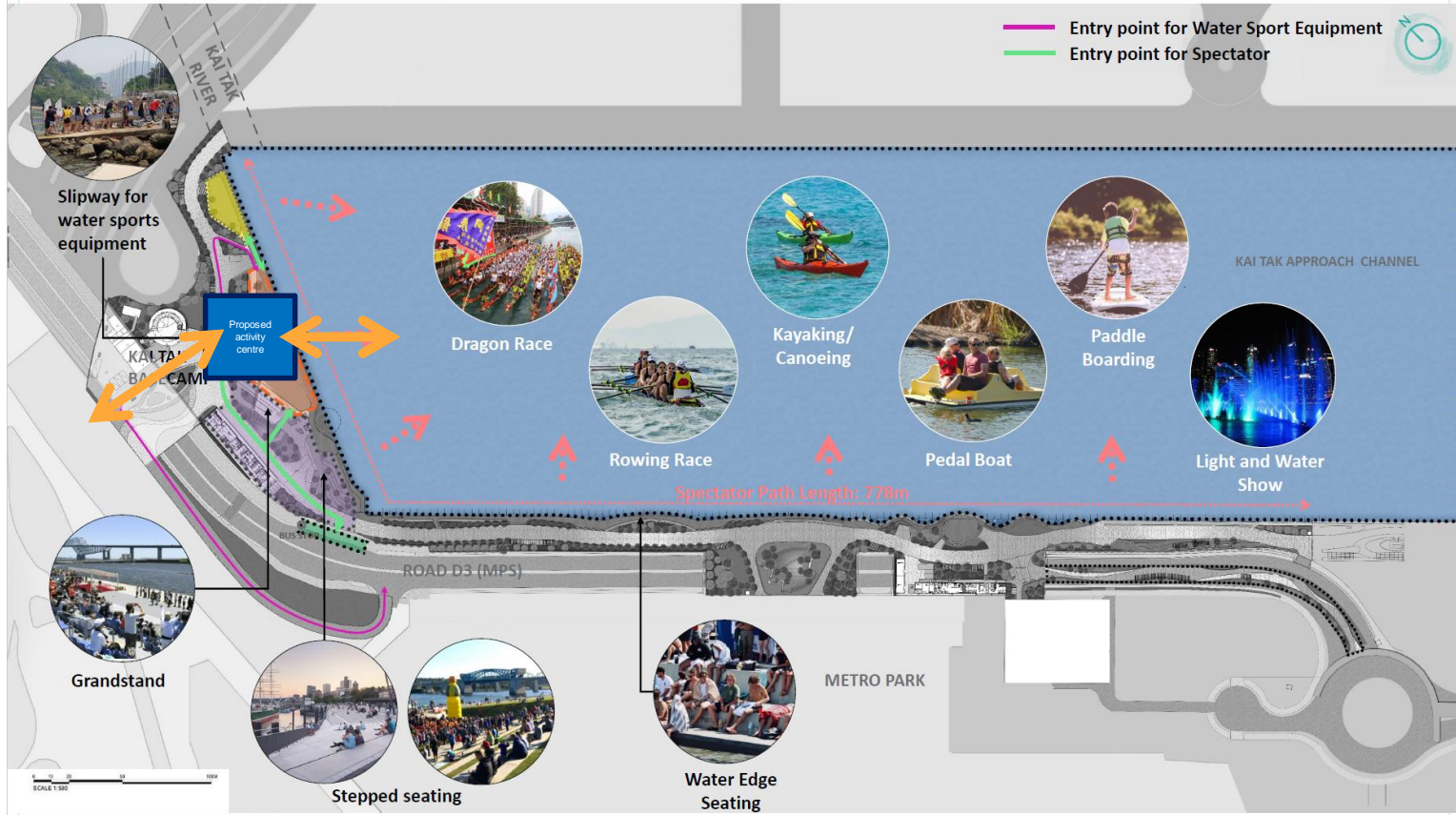


Site Context

Water Event Scenario

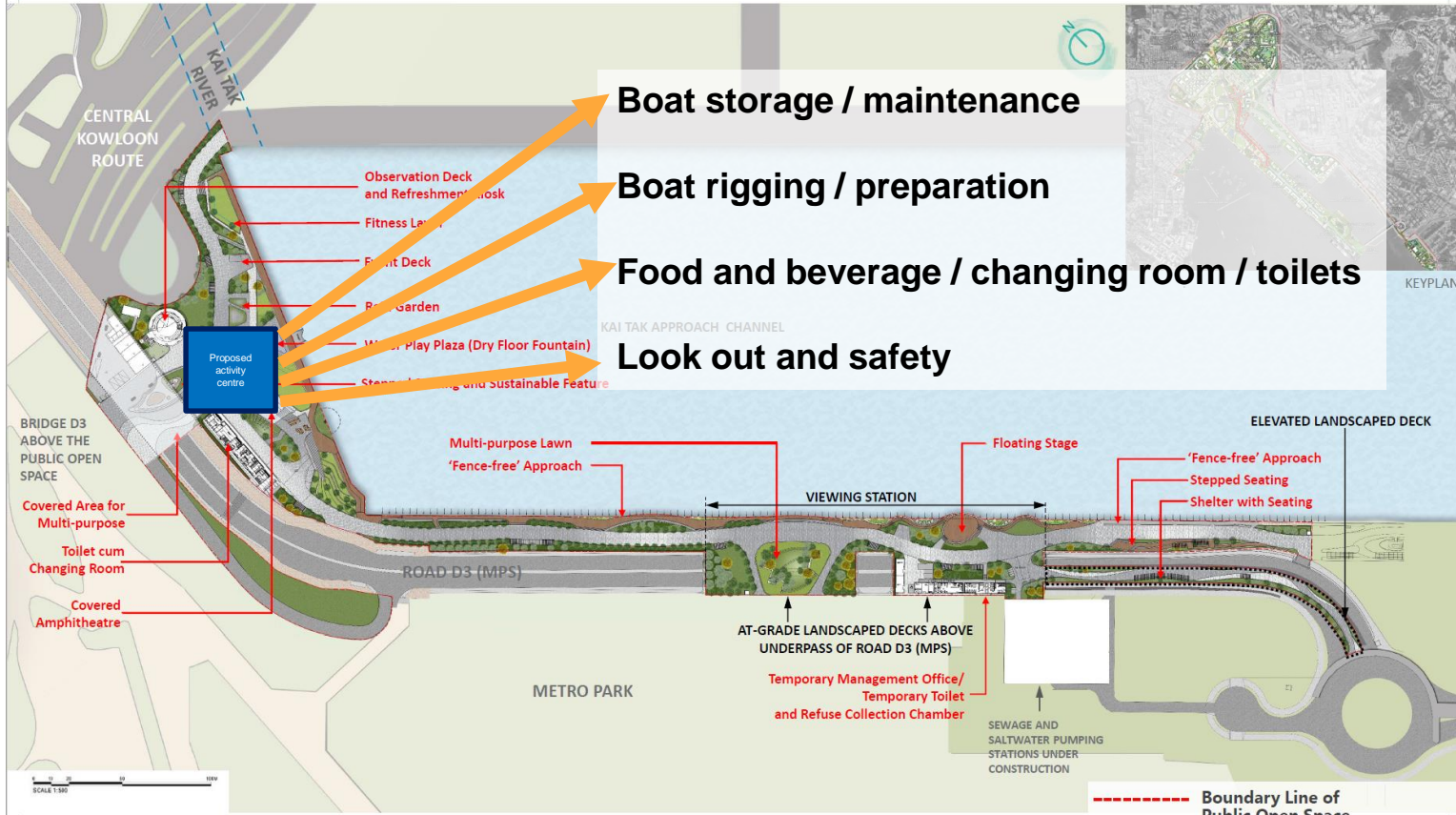
Activating the Waterfront

Design the waterfront for the enjoyment of leisure, cultural and recreational activities on land and water.



Overlay on visuals by CEDD consultants to raise questions at Kai Tak Taskforce 7 December 2020

Master Layout Plan



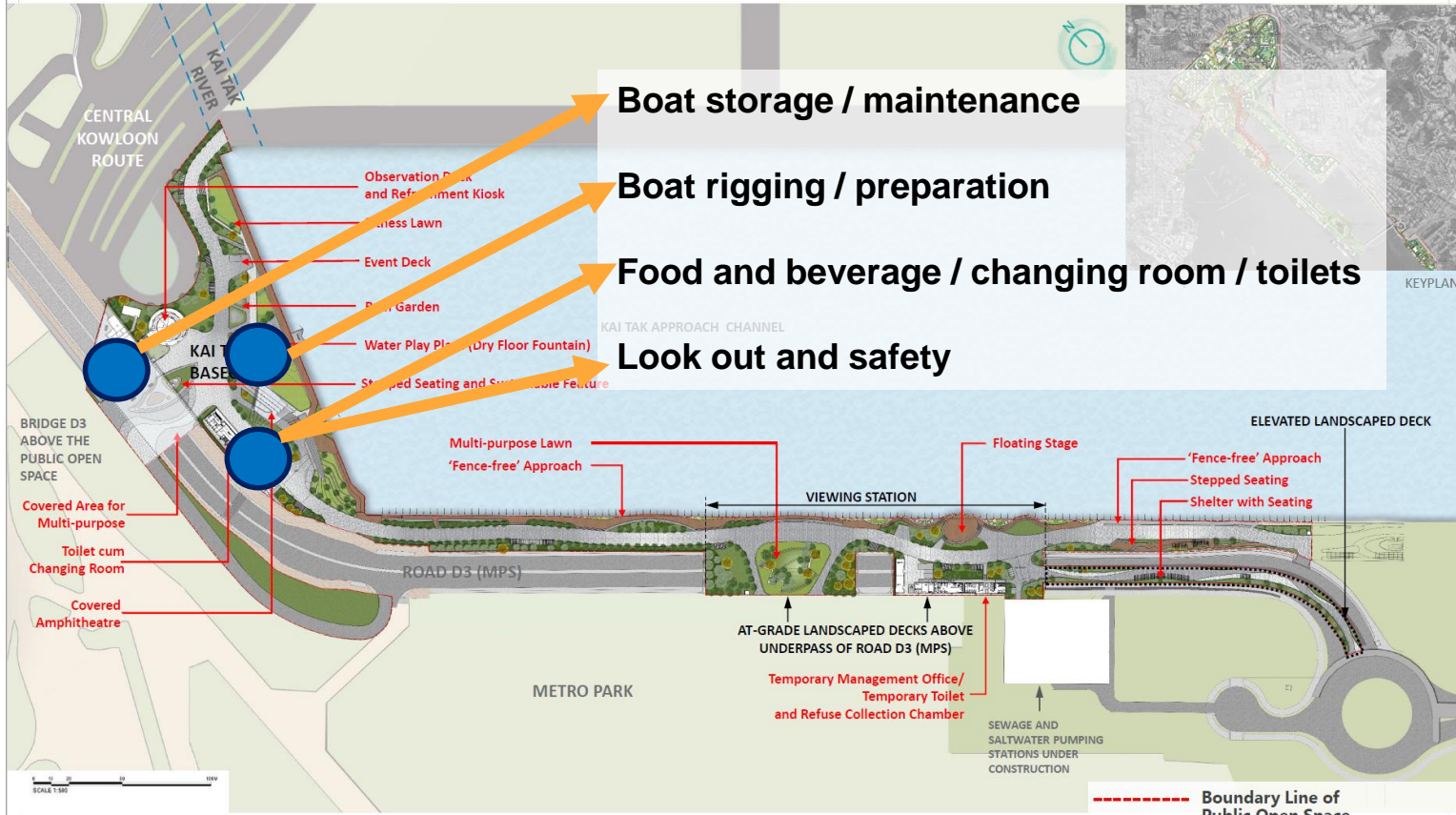
*all designs are subject to detailed development



Overlay on visuals by CEDD consultants to raise questions at Kai Tak Taskforce 7 December 2020

Figure No. **Figure 7**

Master Layout Plan



*all designs are subject to detailed development



Overlay on visuals by CEDD consultants to raise questions at Kai Tak Taskforce 7 December 2020

Figure No. **Figure 7**

Kai Tak Basecamp

Observation Deck and Refreshment Kiosk
Security Kiosk

Back-of-house facilities

- Nursery
- A Service Yard and Storage Area A
- Horticultural Maintenance Store
- Refuse Collection Chamber
- Loading/Unloading
- Parking Space for Service Yard Storage Area
- F.S. Control Room, F.S. Pump Room, Water Pump, Water Meter Cabinet, TBE Room and Electrical Room

Northern Entrance Plaza

Under-bridge Public Space

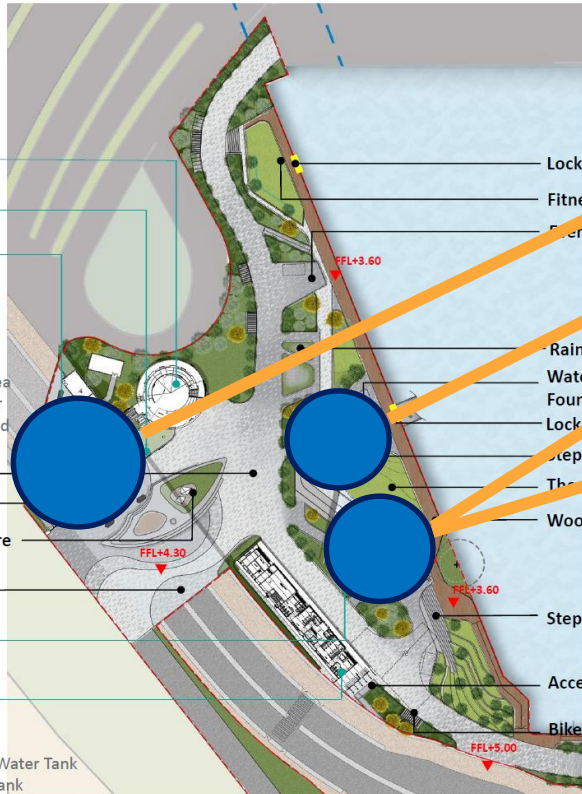
Stepped Planter and Sustainable Feature

Covered Area for Multi-purpose

Covered Amphitheatre

Toilet cum Changing Room

- Toilet and Changing Area
- D.G. Store and General Store
- Rainwater and Filtration Plant Room and Water Tank
- F.S. Pump Room and Street Fire Hydrant Tank
- Automatic Irrigation Plant Room, Potable, Flushing & Cleansing Water Pump Room and Electrical Room



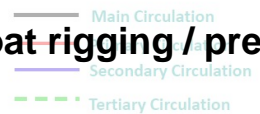
- Lockable Gate
- Fitness Lawn
- Event Deck
- Rain Garden
- Water Play Plaza (Dry Fountain)
- Lockable Gate
- Step Seating
- Theatre Lawn
- Wood Grain Porcelain Tile
- Step
- Access Ramp
- Bike Parking

Boat storage / maintenance

Boat rigging / preparation

Food and beverage / changing room / toilets

Look out and safety

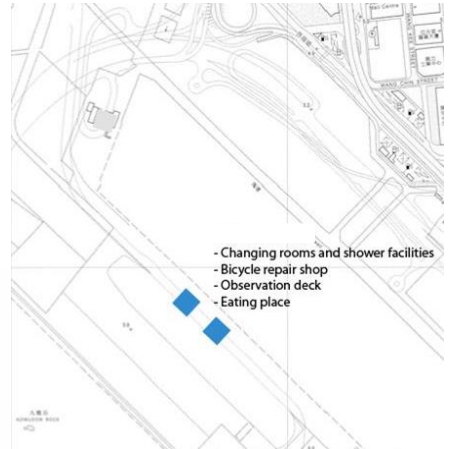
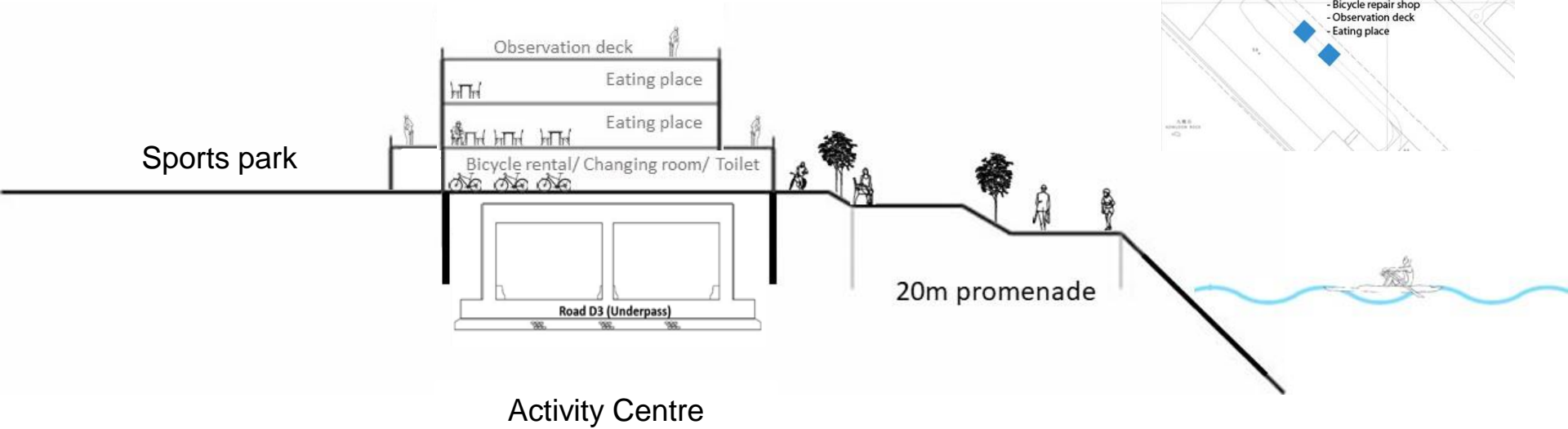


Activity Centre 2 & 3 connecting Metro Park and Kai Tak Channel

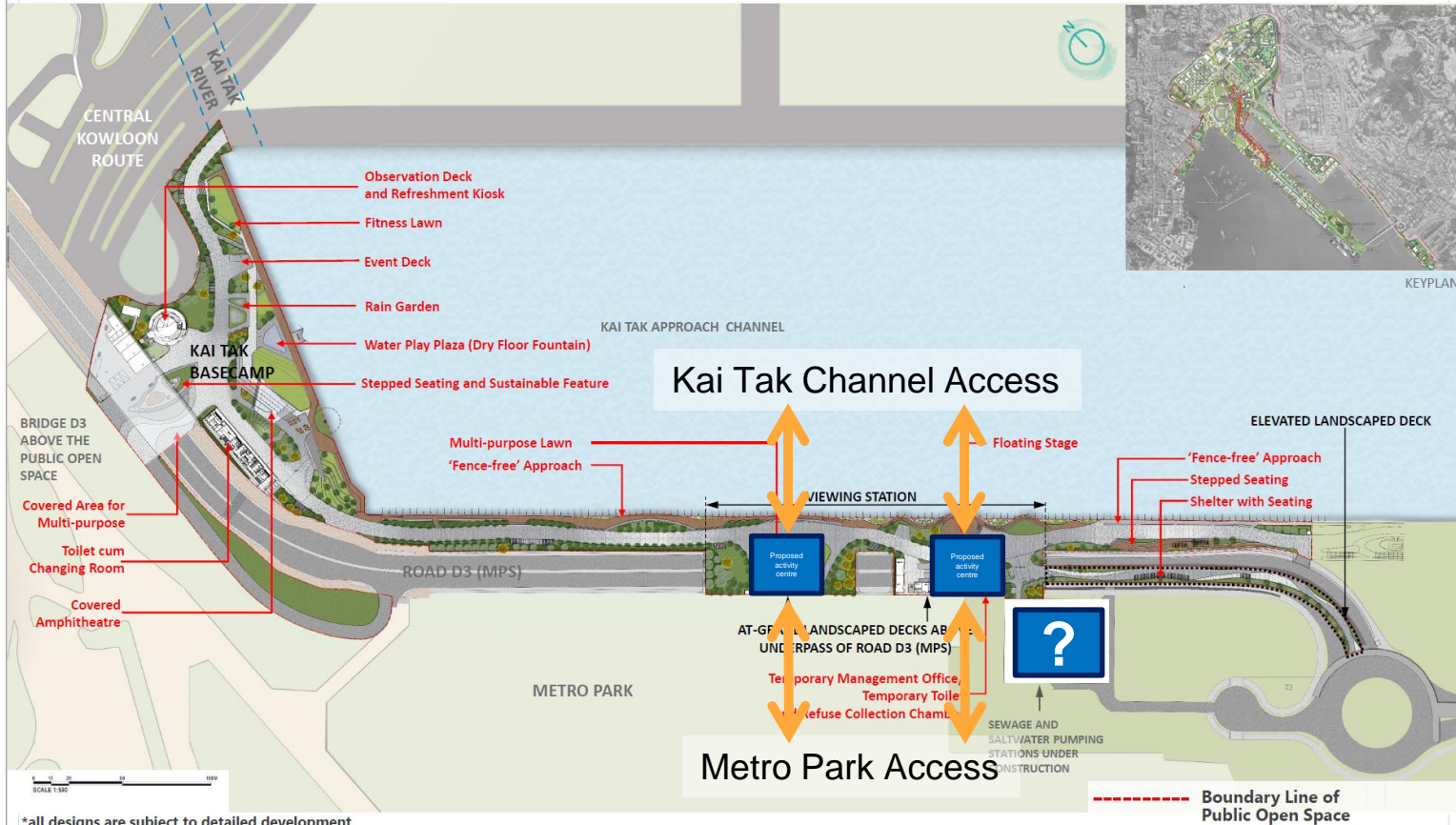


Activity Centre 2 & 3 connecting Metro Park and Kai Tak Channel

Site area 2,200 sq.m.
GFA 4,800 sq.m.



Master Layout Plan



*all designs are subject to detailed development



Overlay on visuals by CEDD consultants to raise questions at Kai Tak Taskforce 7 December 2020

Figure No. Figure 7

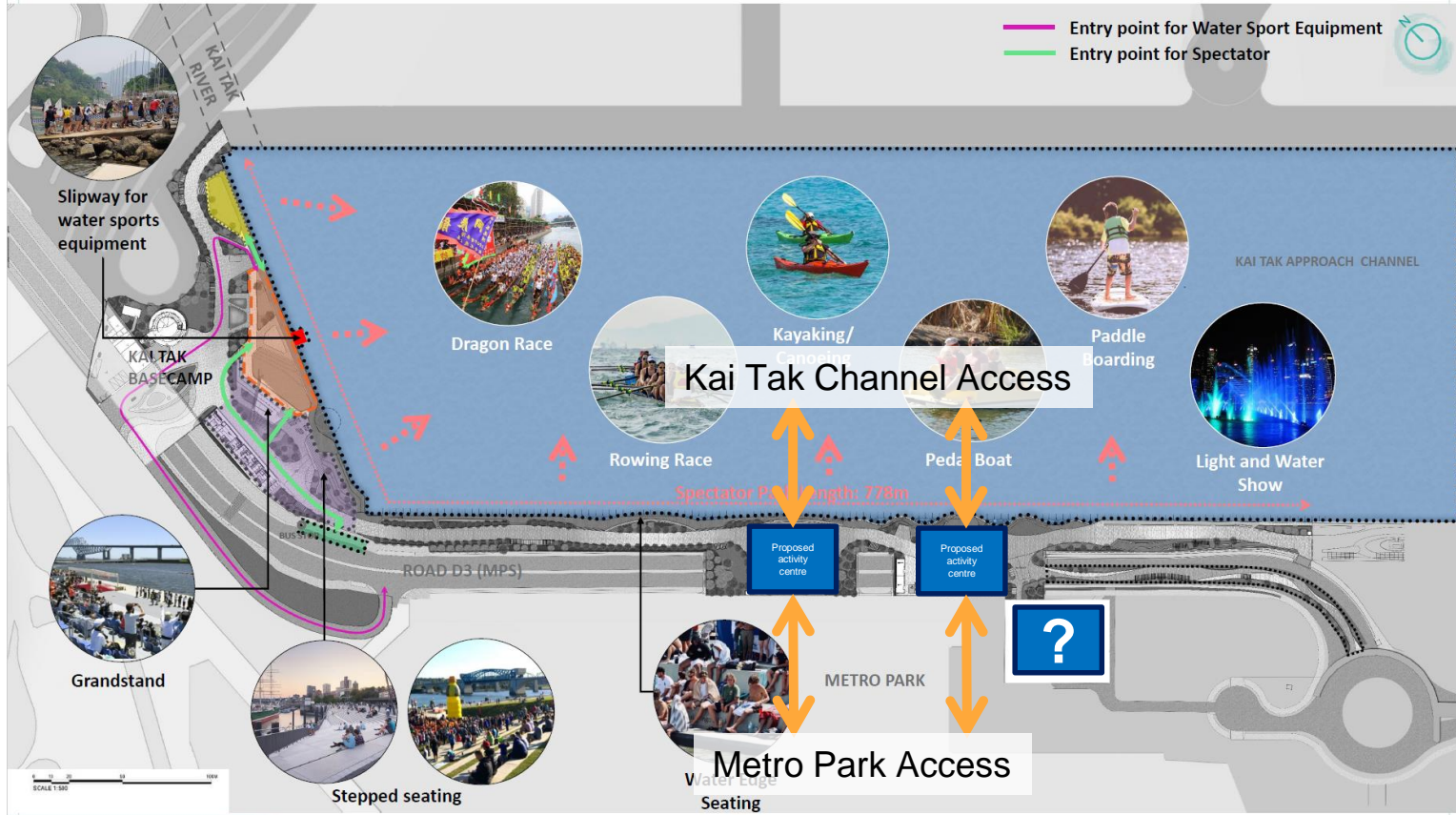
Site Context

Water Event Scenario

Activating the Waterfront

Design the waterfront for the enjoyment of leisure, cultural and recreational activities on land and water.

- Entry point for Water Sport Equipment
- Entry point for Spectator



Overlay on visuals by CEDD consultants to raise questions at Kai Tak Taskforce 7 December 2020



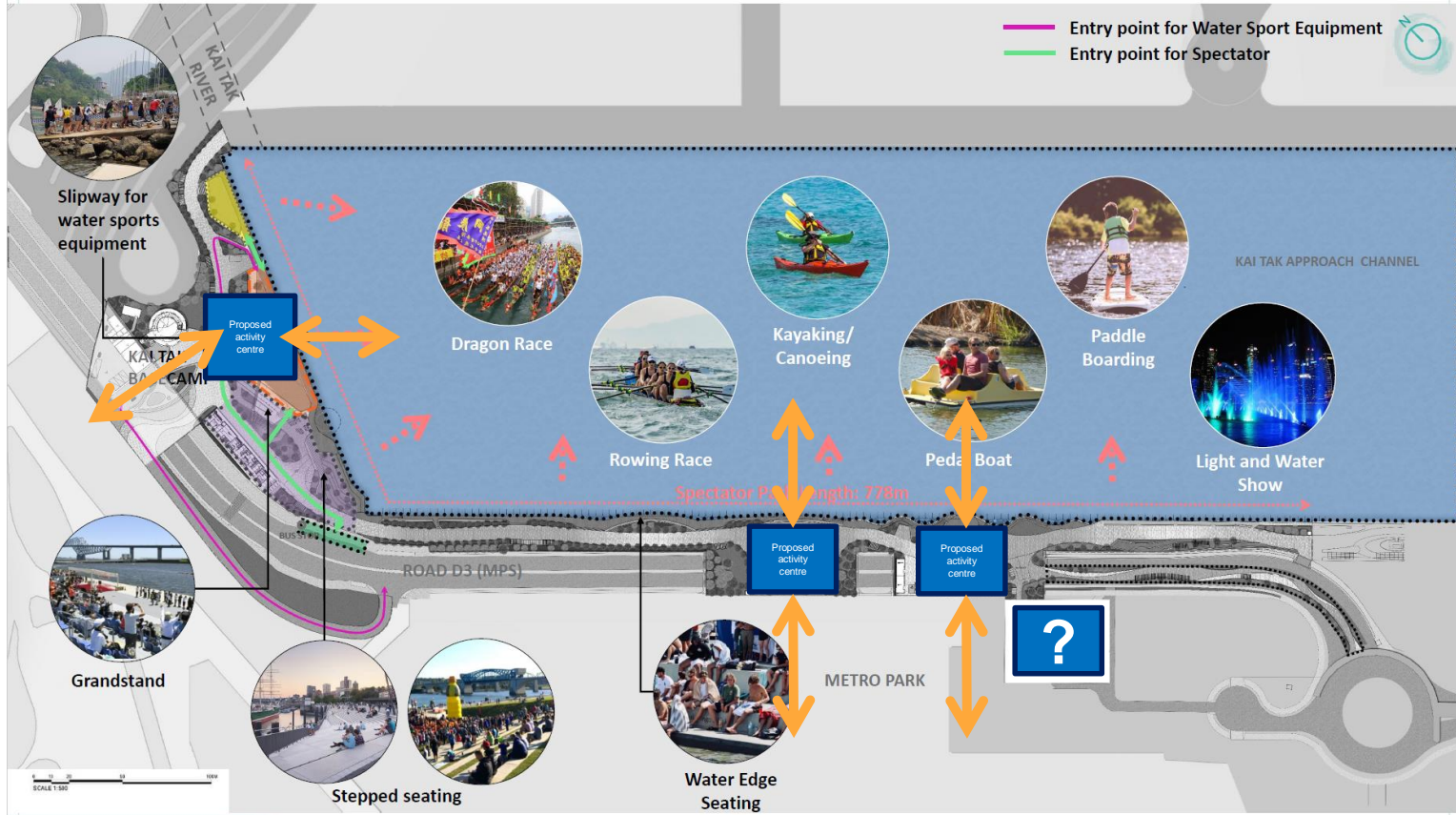
Site Context

Water Event Scenario

Activating the Waterfront

Design the waterfront for the enjoyment of leisure, cultural and recreational activities on land and water.

- Entry point for Water Sport Equipment
- Entry point for Spectator



Overlay on visuals by CEDD consultants to raise questions at Kai Tak Taskforce 7 December 2020

Activity Centre 4 at corner of typhoon shelter and Kai Tak channel



20m wide promenade

Proposed activity centre

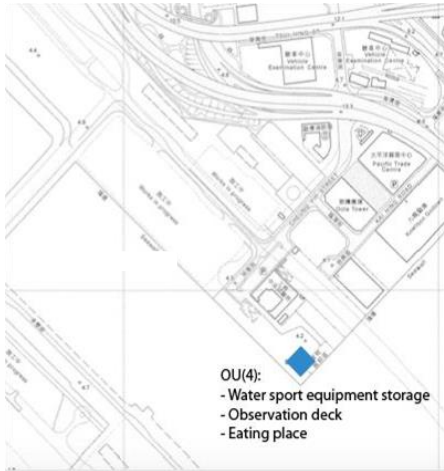
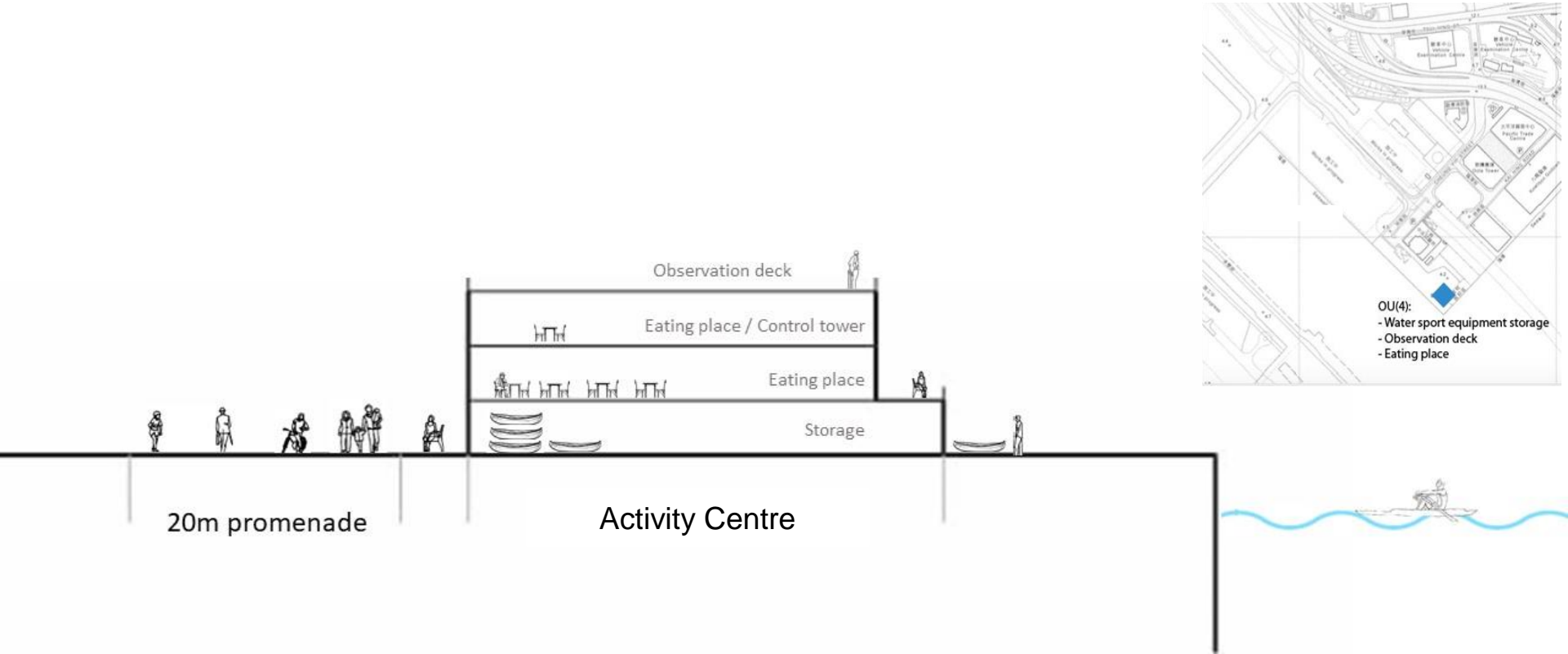
Accessible for pedestrian when area is not in use

Kwun Tong Typhoon Shelter

Kai Tak Approach Channel

Activity centre 4 at corner of typhoon shelter and Kai Tak channel

Site area 1,100 sq.m.
 GFA 2,400 sq.m.



Activity centre 4 at corner of typhoon shelter and Kai Tak channel

According to the KTTA Study, the planned district open space in the area around Location 4 is proposed to adopt a water sports theme for its development (**Plan Z-3**), with provision of land-based facilities such as storage and training facilities and a set of landing steps to allow access to the adjoining waterbody. As the tunnel of Trunk Road T2 will be underground at the POS site and that it will be used as a temporary works area for Trunk Road T2 until 2026 earliest, the site will only be available for development in the medium term.

Location 4 is within a temporary works area of the Trunk Road T2 project. As recommended in the KTAA Study, the site could be released for POS development upon completion of the construction works for Trunk Road T2 in 2026 (**Plan Z-3**). The POS would adopt a water sports theme with some land-based facilities such as storage and training ground. A set of landing steps is proposed for the site to allow access to the adjoining waterbody. The applicant proposes to allow 'Eating Place', 'Place of Entertainment' and 'Place of Recreation, Sports or Culture' uses on the site. According to the Notes of the OZP for the subject "O" zone (**Appendix III**), the above-mentioned uses are all Column 2 uses which may be permitted on application to the Board. It is considered that the current zoning has provided sufficient flexibility for allowing the proposed uses and rezoning would not be necessary.

References

Minutes of 659th Meeting of the Metro Planning Committee held at 9:00 a.m. on 6.11.2020

“Given Members’ view, the Chairman suggested and Members agreed that CEDD should be requested to allow more flexibility and make the provision for any future waterfront related uses in the design of Road D3 (Metro Park Section) and its adjoining waterfront promenade/POS.”

References

Minutes of 659th Meeting of the Metro Planning Committee held at 9:00 a.m. on 6.11.2020

“It was noted from the comment of SHA that if the applicant submitted a development plan, a financial plan and an operation plan that could demonstrate the feasibility and worthiness of the proposal that met his criteria, he would consider giving the policy support;”

Water quality

Kai Tak Outline Zoning Plan

9.6.9 The water quality of KTAC and KTTS has been progressively improved following the implementation of various enhancing measures by the Government. To facilitate the development of water sports and recreational activities so as to further strengthen the role of Kai Tak as a hub for sports and recreational activities, 'Water Sports/Water Recreation' is always permitted within the areas zoned "O". The exact location that can be earmarked for water sports/recreational use will be subject to further discussion between the Home Affairs Bureau and the stakeholders and the continued improvement of water quality in the KTAC and KTTS.

Water Quality in Kai Tak in 2016 啟德的水質2016

- CEDD, EPD and DSD would further rectify identified pollution sources and upgrade DWFIs to intercept pollutants ... ⇒ achieve the water quality requirement for water sports activities
土木工程拓展署、環境保護署和渠務署已進行多項措施去尋找污染源頭及升級現有的旱季截流器，務求令啟德的水質符合進行水上活動的標準。
- Kai Tak Task Force in HFC had high expectation on the results of the water quality improvement scheme, not merely tackling the odour problem and to enable water sports activities (target of an annual geometric mean E.coli at KTAC below 610 count/100 ml)
啟德海濱發展專責小組對啟德的水質期望很高，希望可以盡快令解決河流的氣味問題，以及令水質達到進行水上活動的標準。（標準：平均大腸桿菌含量每一百毫升小於610）

9.1.6 Comments of the Director of Environmental Protection (DEP):

Water Quality

APPLICATION FOR AMENDMENT OF PLAN
UNDER SECTION 12A OF THE TOWN PLANNING ORDINANCE

APPLICATION NO. Y/K22/4

- (a) All of the four proposed waterfront locations are at the bank of the semi-enclosed waterbody of KTAC and KTTS with limited water flow. If the four locations are to be rezoned to “OU(WRCRLU)”, it may convey the idea that the waters around these locations are suitable for secondary contact recreation uses for which the *E. coli* level should meet the “610 counts/100mL” requirement.
- (b) As Location 1 is located at the waterfront of the most upstream corner of the semi-enclosed waterbody of KTAC, where water circulation is very poor and dispersion of pollutants is very slow, and it lies very close to the outfall of the Kai Tak Nullah which receives surface runoff from a large part of the Kowloon City and Kwun Tong districts, as well as the treated sewage effluent from the Tai Po and Shatin Sewage Treatment Works, and making reference to the water quality modelling results under a study by CEDD in early 2020, it is doubtful whether the water quality at the upstream part of KTAC could meet the *E. coli* requirement of “below 610 count/100ml” for secondary contact recreational uses. In this regard, he has great reservation in rezoning Location 1 to “OU(WRCRLU)” and has no adverse comment on Locations 2 to 4 at this stage.



I. Water Uses

Overview of Water Quality at KTAC/KTTS

E.coli Counts / 100ml (annual geometric mean)

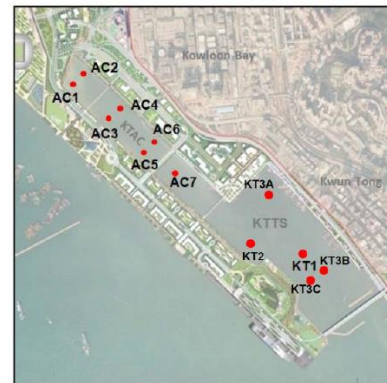
Year		KTAC							KTTS				
		AC1	AC2	AC3	AC4	AC5	AC6	AC7	KT1	KT2	KT3A	KT3B	KT3C
2014	Annual	7,900	6,600	4,200	4,500	2,800	2,600	1,800	600				
2015	Annual	5,500	2,200	2,500	1,500	1,200	1,000	610	350				
2016	Annual	10,100	8,500	7,400	4,900	3,800	4,900	2,200	1200	910	620		
2017	Annual	1,270	1,500	1,140	930	810	680	480	260	320	150	180	280
2018	Annual	542	462	399	389	351	391	129	95	88	74	67	71
2019	Annual	1,694	1,992	2,361	2,041	1,826	2,257	1,463	319	310	624	440	428

Requirement for water sports:

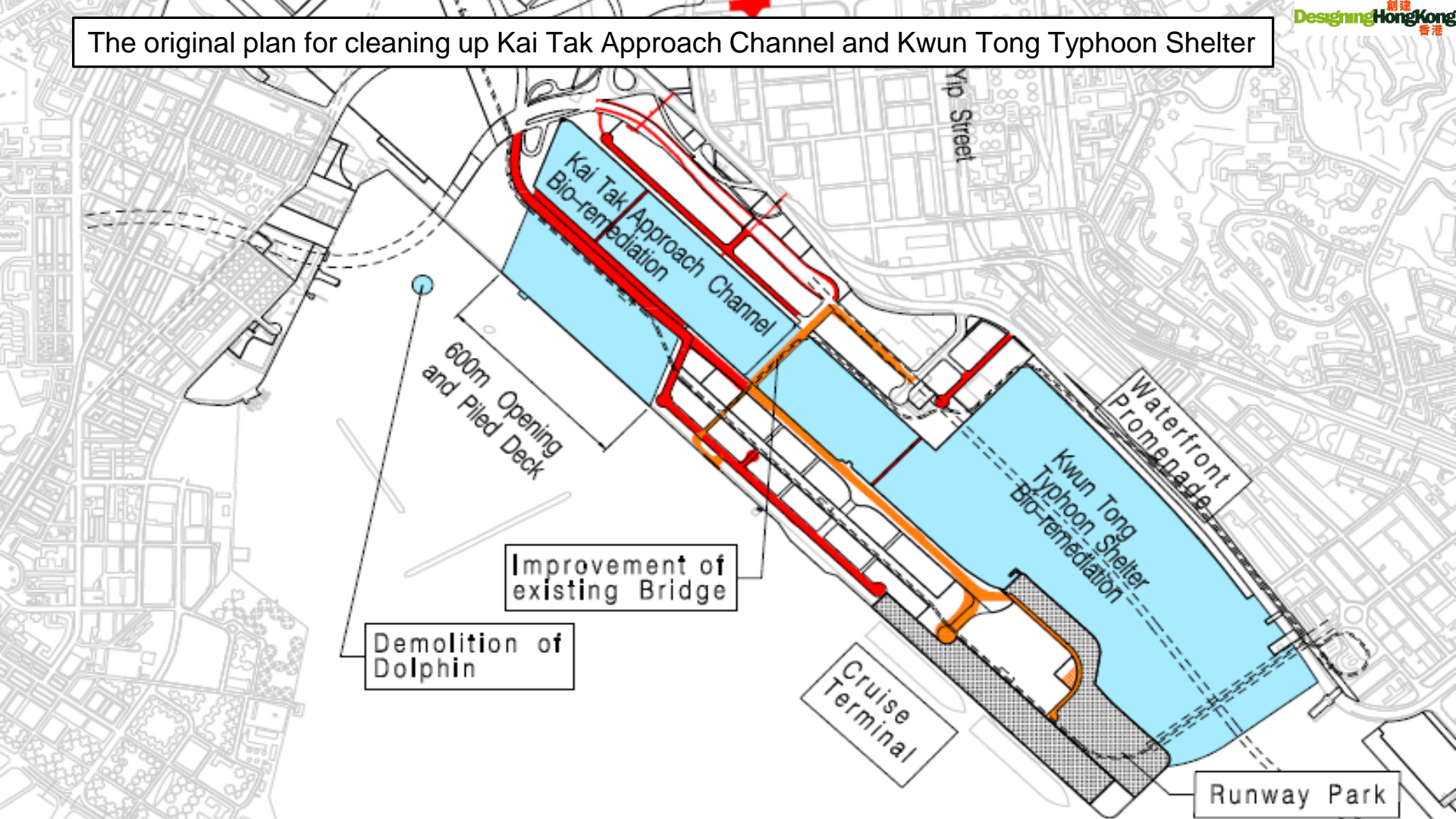
(making reference to water quality objectives for secondary contact recreation specified under WPCO)

***E.coli* ≤ 610 counts/100 ml (annual geometric mean)**

- KT1 – monitoring station at KTTS



The original plan for cleaning up Kai Tak Approach Channel and Kwun Tong Typhoon Shelter



Kai Tak Approach Channel
Bio-remediation

600m Opening
and Piled Deck

Improvement of
existing Bridge

Demolition of
Dolphin

Cruise
Terminal

Waterfront
Promenade

Kwun Tong Typhoon Shelter
Bio-remediation

Runway Park

Yip Street

Water Quality in Kai Tak in 2016 啟德的水質2016

Interception and Pumping (IP) Scheme

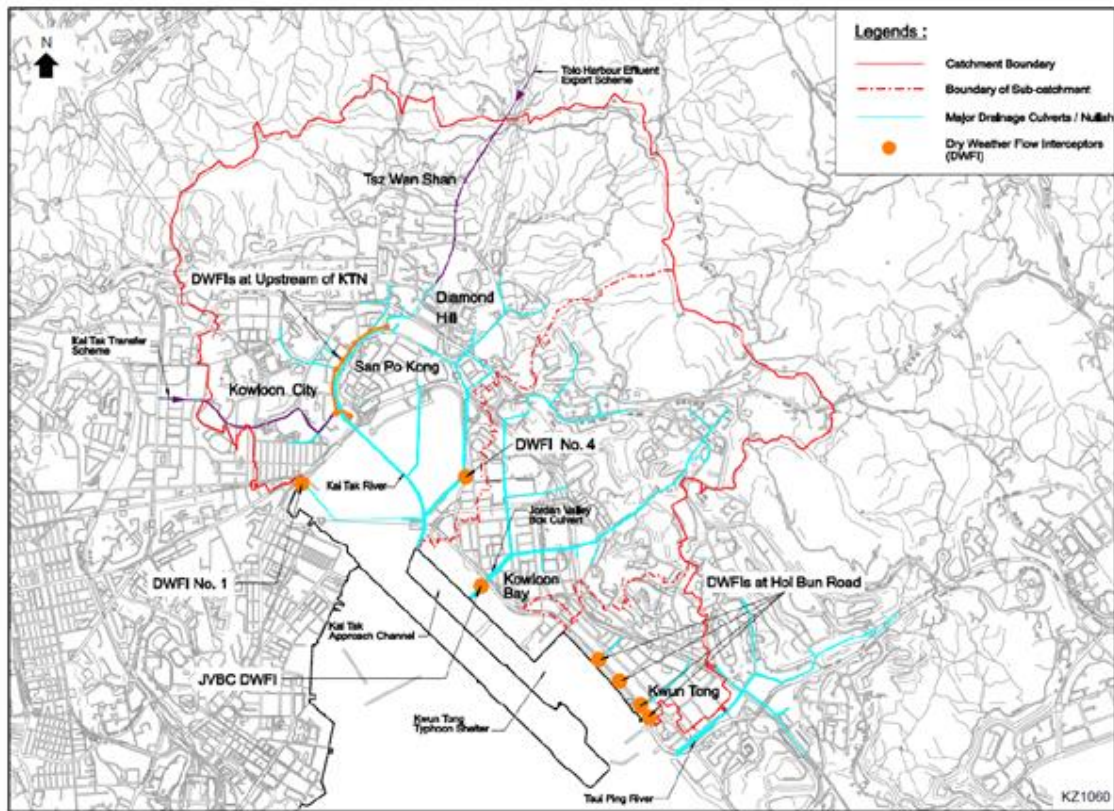
Annex 3



Water Quality in Kai Tak in 2016 啟德的水質2016

Major DWFIs at Upstream of KTAC/KTTS

Annex 5



Water quality motions in District Councils

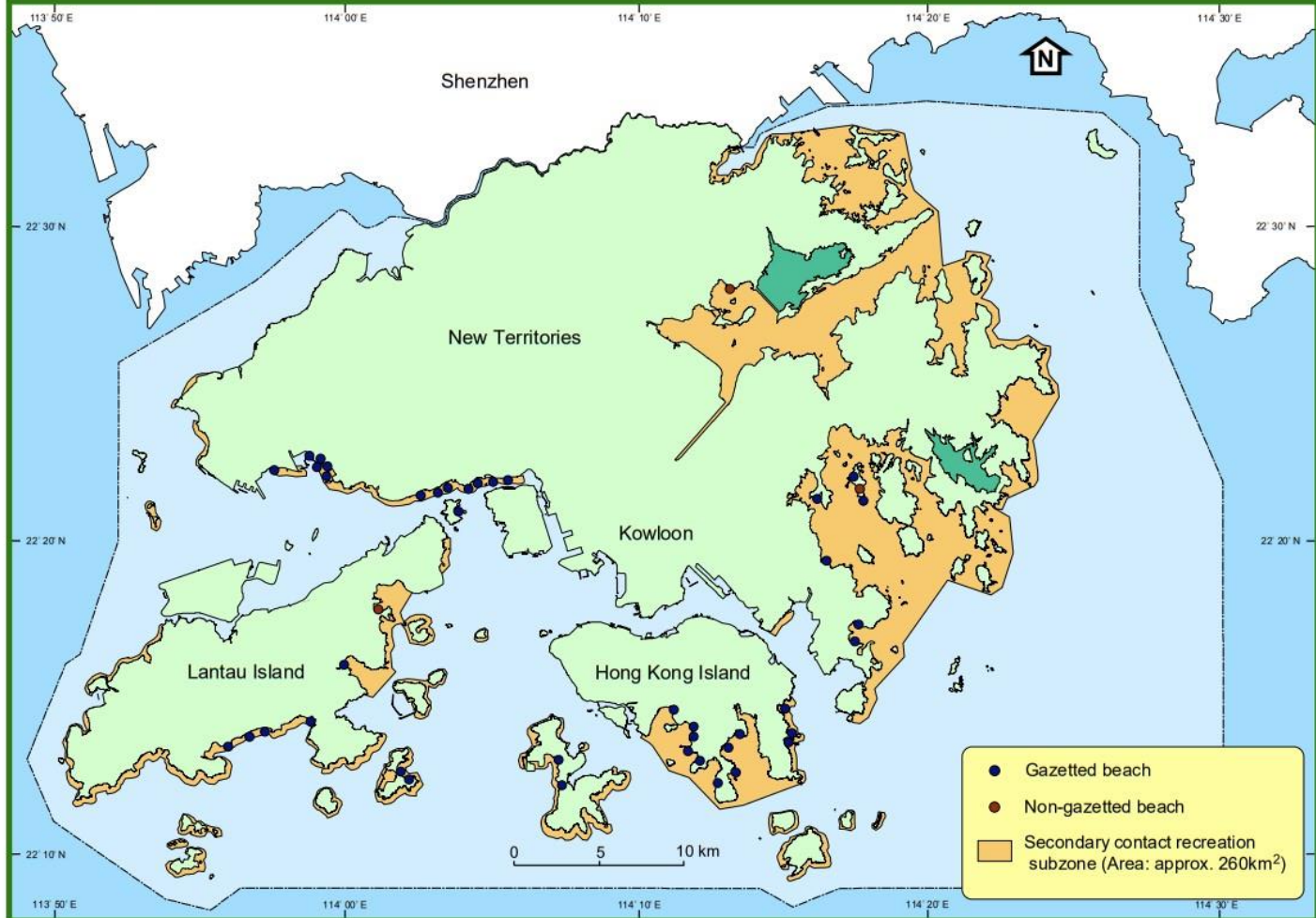
District Councils: Wong Tai Sin; Kowloon City; Kwun Tong

“Government is urged to designate the Kai Tak Approach Channel (KTAC) and Kwun Tong Typhoon Shelter (KTTS) as a Secondary Contact Recreation Subzone, and to set the Water Quality Objective at (less than) <610 E.coli/ 100ml to enable these waters to be used for water sports and community recreation.”

「敦促政府將啟德明渠進口道和觀塘避風塘，列為次級接觸康樂活動分區，並制定大腸桿菌含量每100毫升全年平均值不超於610個為水質目標，以達到適合進行水上活動的標準。」

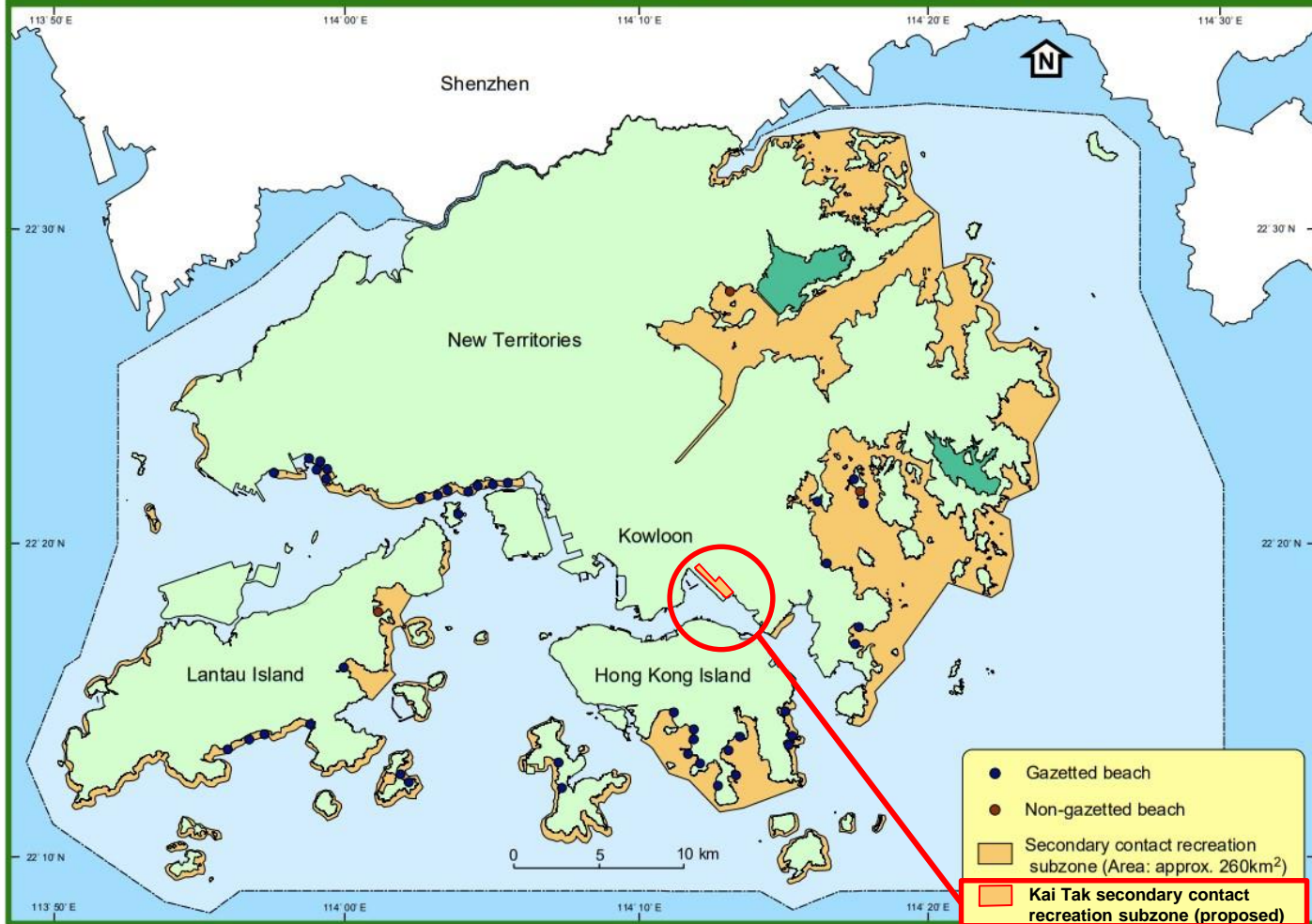
Bathing beaches and secondary contact recreation subzones in Hong Kong in 2018

MARINE WATER QUALITY IN HONG KONG IN 2018



Bathing beaches and secondary contact recreation subzones in Hong Kong in 2018

MARINE WATER QUALITY IN HONG KONG IN 2018



A - 6

Appendix A



Support designating Kai Tak Approach Channel (KTAC) and Kwun Tong Typhoon Shelter (KTTS) as a Secondary Contact Recreation Subzone, and to set the Water Quality Objective at (less than) <610 E.coli/ 100ml (co-sign letter to EPD)

Express interest in (development/operation) of proposed four activity centres (DevB, Design study, s12a)

References:

1. Section 12A Application Y/K22/4

https://www.info.gov.hk/tpb/en/plan_application/Y_K22_4.html

2. MPC Paper No. Y/K22/4B

https://www.info.gov.hk/tpb/en/papers/MPC/K/Y_K22_4/Y_K22_4B_Main%20Paper.pdf

https://www.info.gov.hk/tpb/en/papers/MPC/K/Y_K22_4/Y_K22_4_Plan_20201104.pdf

3. 659th Meeting of the Metro Planning Committee held at 9:00 a.m. on 6.11.2020.

Papers:

https://www.info.gov.hk/tpb/en/meetings/MPC/Agenda/659_mpc_agenda.html

Minutes: https://www.info.gov.hk/tpb/en/meetings/MPC/Minutes/m659mpc_e.pdf