

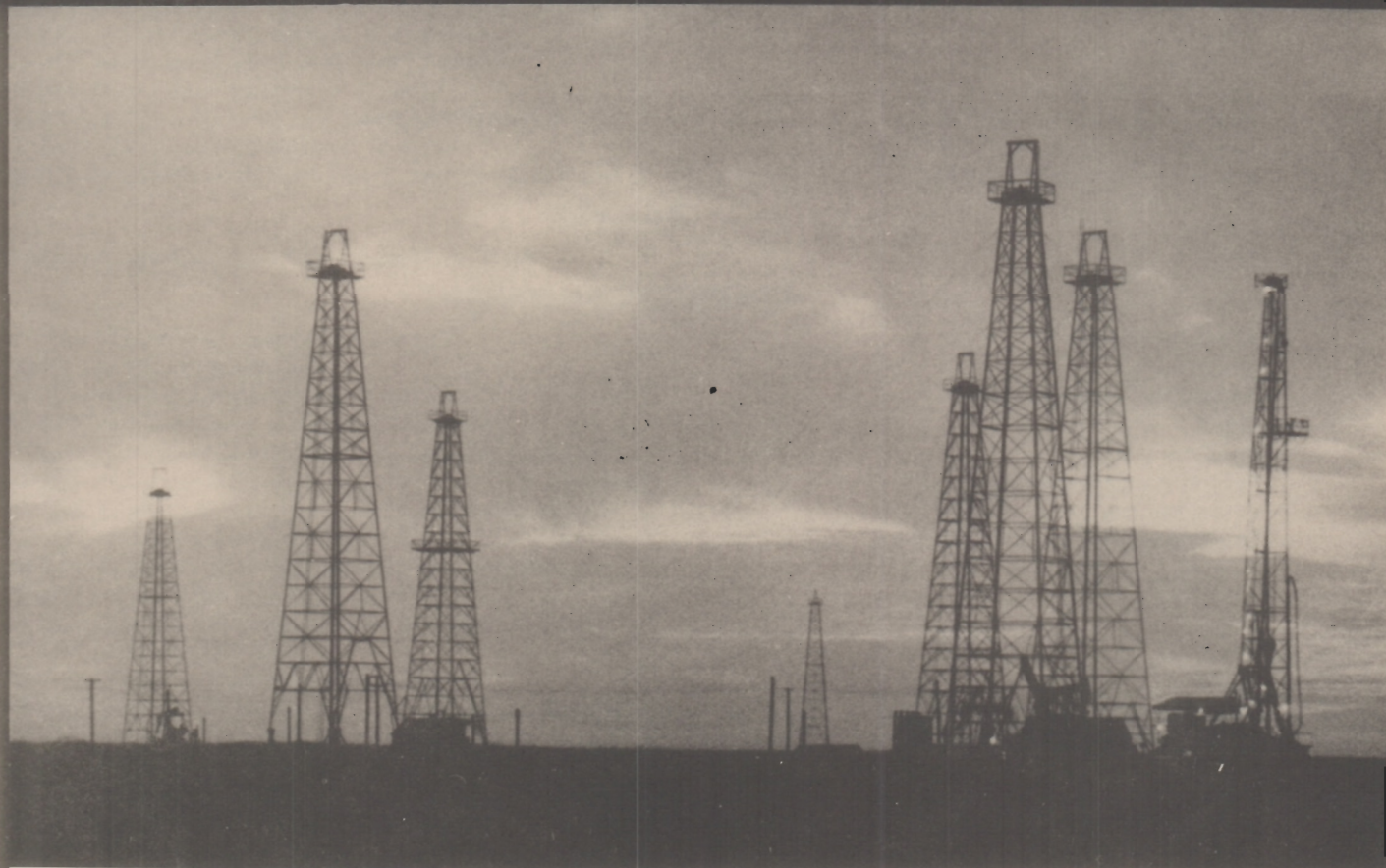
January, 1984

BULLETIN

HOUSTON GEOLOGICAL SOCIETY

Volume 26

Number 5



HGS JANUARY CALENDAR

JANUARY 9, 1984 (Dinner Meeting)

Westin Galleria Hotel, 5060 W. Alabama

Chapman Cronquist, Cronquist Associates

"TURTLE BAYOU - 1936 TO 1983 - CASE HISTORY OF A MAJOR GAS FIELD IN SOUTH LOUISIANA"

Social Period - 5:30 PM, Dinner and Meeting - 6:30 PM

RESERVATION by name only, telephone **771-8315**.

Must be made or cancelled by **noon Friday, January 6, 1984**.

JANUARY 25, 1984 (Luncheon Meeting)

Meridien Hotel, 400 Dallas

John Balsley, Mitchell Energy Corporation

"CRETACEOUS WAVE - DOMINATED DELTA, BARRIER ISLAND, AND SUBMARINE FAN DEPOSITIONAL SYSTEMS OF THE ROCKY MOUNTAINS: CLASTIC MODELS FOR HYDROCARBON EXPLORATION."

Social Period - 11:30 AM, Luncheon and Meeting - 12:00 Noon

RESERVATION by name, (telephone only, **771-8315**).

Must be made or cancelled by **noon Monday, January 23, 1984**.

JANUARY 18, 1984

HGS International Explorationists

Westin Galleria Hotel, 5060 W. Alabama

Robert L. Maby, Jr., Consulting Geologist

"MIDDLE EAST OIL AND GAS ACTIVITIES"

JANUARY 27, 1984

Continuing Education Program (See page 8)

Exxon Building Auditorium, 800 Bell

Gerald M. Friedman,

Rensselaer Polytechnic Institute

8:30 AM - 4:00 PM

"EXPLORATION FOR CARBONATE PETROLEUM RESERVOIRS"

JANUARY 11, 1984

HGA Luncheon and Style Show

Racquet Club

Note: Late comers may pick-up meal tickets at the head table.

HOUSTON GEOLOGICAL SOCIETY
6916 Ashcroft
Houston, Texas 77081
771-8315
(Alternate phone: 771-5421)

EXECUTIVE BOARD

President	Matthew W. Daura , Transcontinental Gas Pipe Line	439-4002
President-Elect	Gerald A. Cooley , Phillips Petroleum	669-3650
Vice President	W. N. (Mac) McKinney, Jr. , Aminoil U.S.A.	827-5538
Secretary	Gregory K. Burns , Aminoil U.S.A.	827-2211
Treasurer	Steven Thornhill , Wing Corporation	658-9673
Executive Committeeman ('84)	Clyde E. Harrison , Consultant	658-8115
Executive Committeeman ('84)	Edward McFarlan, Jr. , Exxon Co. U.S.A.	656-3319
Executive Committeeman ('85)	Clyde G. Beckwith , Conoco Inc.	965-2297
Executive Committeeman ('85)	Scott J. Lysinger , Sierra Production Company	932-9700

BULLETIN

Editor	Jerry A. Watson , Consulting Geologist	783-2828
--------	---	----------

COMMITTEE CHAIRMEN

Academic Liaison	Robert H. Barton , Tenneco Oil	951-1035
Advertising	Claudia P. Ludwig	723-1436
Awards and Student Loans	David A. Fontaine , Consultant	783-0020
Ballot	James W. Tucker , Arco Exploration	965-6355
Boy Scouts	Hugh W. Hardy , Geoquest International, Inc.	627-7180
Continuing Education	Rudolph R. Schwarzer , Geochem Research Inc.	492-2510
Entertainment	Stephanie V. Hrabar , Geological Consultant	683-0638
Environmental	Diana C. Dale , Conoco Inc.	965-1966
Exhibits	Raymond R. Wells , American Petrofina	652-5926
Field Trip	Tridib K. Guha , Conoco Inc.	965-2995
Finance	Fred M. Haston, Jr. , Partners Oil Company	658-8374
Historical	O. Lyle Austin	681-2194
Library	Evelyn Willie Moody , Consultant	654-0072
Membership	Neil D. Samuels , Amoco Production Company	556-4455
Personnel Placement	John F. Simpson , Wallace Resources	759-9258
Publications	Gerald A. Cooley , Phillips Petroleum	669-3650
Publication Sales	Charles K. Overton , Amoco Production Company	556-3431
Public Relations	Robert J. Killian , Mesa Petroleum	658-4356
Remembrances	Walter A. Boyd, Jr. , Columbia Gas Development	940-3643
Research and Study Course	Richard R. McLeod , Gulf Oil Company	754-8893
Technical Program	W. N. (Mac) McKinney, Jr. , Aminoil U.S.A.	827-5534
Transportation	David M. Eggleston , Geomap Company	972-1018

SPECIAL REPRESENTATIVES

Advisor, Museum of Natural Science	Morgan J. Davis, Jr. , Consultant	523-2929
GCAGS Representative	Peggy J. Rice , Conoco Inc.	965-2923
GCAGS Alternate	Matthew W. Daura , Transcontinental Gas Pipe Line	439-4002
AAPG Delegate Foreman	Charles R. Noll, Jr. , Frio Exploration	464-6730
AAPG-DPA Representative	Scott J. Lysinger , Sierra Production Company	932-9700
AAPG Group Insurance	John Bremsteller , Insurance Consultant	751-0259
Memorial Scholarship Board	Robert J. Shrock	497-4411

HOUSTON GEOLOGICAL AUXILIARY OFFICERS

President	Mrs. William (Suzanne) Howell	467-2140
President-Elect	Mrs. Jeffery V. N. (Sylvia) Morris	774-0636
First Vice President (Social)	Mrs. Clyde E. (Marilyn) Harrison	780-9469
Second Vice President (Membership)	Mrs. Bill D. (Carolyn) Holland	467-0661
Third Vice President (HGS Representative)	Mrs. William W. (Dusty) Marshall	493-2381
Secretary	Mrs. Howard W. (Ada) Kiatta	680-0179
Treasurer	Mrs. Hugh M. (Elinor) MacMillan	783-9956

PRESIDENT'S COMMENTS

Several HGS members were honored recently at the GCAGS convention in Jackson, Mississippi. Fred L. Smith and James O. Lewis, both former presidents of the HGS were awarded Honorary Memberships in the GCAGS, as was Scott J. Lysinger who is currently an Executive Committeeman of the HGS. We're very proud that our members were so recognized.

Another honor at Jackson went to John W. Cagle and M. Ali Kahn, both members of the HGS. For their paper, "Smackover-Norphlet Stratigraphy, South Wiggins Arch, Mississippi and Alabama," they received the Best Paper Award and the A. I. Levorsen Award. We're proud of them too.

If you remember that John Cagle gave his talk first to the HGS in September, you will find the next remark a little ironic. HGS Program Chairman, Vice President Mac McKinney was chided by an HGS member after Cagle's talk in Jackson in words to the effect that "Why don't we get programs like that in Houston?"

It is obvious from the low attendance at many of the luncheon and dinner meetings this year that many other HGS members aren't paying much attention to the *Bulletin* notices about some very fine and informative talks. Every program this year has presented some information useful to geologists.

Considering the employment situation these days, it appears to me the broader the knowledge about various facets of the profession and the wider his/her experience the more valuable the geologist is to himself/herself and to an employer.

Even the International Explorationists Group programs present some aspect of geology that might strike a spark in Gulf Coast geologists. Their meetings are open to everyone.

There are too many opportunities for knowledge to be gained just for the price of a meal at our meetings, not to mention the exchange of ideas and fellowship among co-members.

Come hear!

MATTHEW W. DAURA
President

SOCIETY CALENDAR FOR FEBRUARY

- Monday, February 13 Dinner Meeting
Mariott (near Galleria), 1750 West Loop South
Joint Meeting with Houston Petroleum Landmen's Association
Speaker - Pete Rose Telegraph Exploration
"Risk, Uncertainty and Improving Exploration Performance"
- Wednesday, February 29 Luncheon Meeting
Sheraton-Houston, 777 Polk
- Wednesday, February 29 Dinner Meeting
In North Belt Area
Speaker, Tom Ewing Bureau of Economic Geology
"Growth Faults and Salt Tectonics in the Houston Diapir Province-Relative Timing and Exploration Significance"

TRADER'S COLUMN

The "Traders Column" makes free advertising space available to HGS members who have items available for *one time transactions*. So, if you are trying to find a good home for a rare set of books, or want to sell or buy some unusual business equipment, send your ad to the *Bulletin*. Items must be submitted six weeks in advance of publication.

PRICE SCHEDULES—HGS JANUARY MEETINGS

- Westin Galleria, January 9
Dinner \$18.00
- Meridien Hotel, January 25
Luncheon \$14.00*
*Includes Hotel Parking

RESERVATIONS (771-8315)

Telephone reservations are required. Deadline for making reservations for the meeting at Westin Galleria is noon Friday, January 6, 1984. Deadline for making reservations for the Meridien Hotel is noon Monday, January 23, 1984.

HGS INTERNATIONAL GROUP

- Westin Galleria Hotel, January 18, 1984
Dinner \$21.00

Admission to all International meetings is by **advance ticket purchase only**. Tickets may be purchased from representatives in the International departments of most companies or by sending a **check for \$21 and a stamped, self-addressed envelope to:**

Houston Geological Society
6916 Ashcroft
Houston, Texas 77081

Ticket distribution and receipts are handled by **Moin Hussain** and all inquiries should be directed to him at **960-6705**.

NEWS FROM HGA

I hope everyone had a safe and happy Christmas, and didn't add too many pounds with all the parties and good food. Oh well, what would a New Year be without another new diet facing us?

Gwinn and Jim Lewis, Marilyn and Clyde Harrison, Andrew and Jean Bacho, Suzanne and Jerry Howell, Marion and John Hawkins, Lydia and Louis Newitt and Ruth and Charles Henslee were seen at the G.C.A.G.S. in Jackson having a great time. The all day trip to Natchez and the luncheon-style show put on by "Maison Weiss" were two highlights of the convention. Bet Jackson hasn't been the same since.

We are really making headway with the well logs at the library. Those who accepted the job have been so sweet and eager to help. I do appreciate them so much. We will be having another orientation early this month, so please be prepared to give us some help.

It will be nice seeing everyone at the luncheon and style show the 11th of this month at the Racquet Club. By the way, there was a misprint in our book concerning the hostesses for this month's luncheon. They are Rosalie Ruggles and Evelyn Sherman.

"I know not what the future holds, but I know who holds the future."

Happy New Year
DUSTY MARSHALL

CONTRIBUTIONS TO HGS

HGS gratefully acknowledges contributions from **Big 6 Drilling, Roy Bennett, and Mobil Producing Texas and New Mexico, Inc.**

DINNER MEETING—JANUARY 9, 1984

CHAPMAN CRONQUIST—Biographical Sketch



Chapman Cronquist is an independent oil and gas consultant in Houston. In addition to his consulting activities, he is a Lecturer in the Graduate Program in Petroleum Engineering at the University of Houston. He has worked for Shell Oil Company, Shell Development Company, Butler, Miller & Lents, and Scientific Software Corporation. Before opening his own office, he was Manager, Houston Operations, for

Gulf Universities Research Consortium. In that position, he was involved in contract research, principally on enhanced oil recovery. He has published technical papers on a variety of subjects, including water-flooding, enhanced oil recovery, volatile oil reservoirs, and partial water-drive gas reservoirs.

He received a B.S. degree in Geology from Rensselaer Polytechnic Institute and an M.S. degree in Petroleum and Natural Gas Engineering from Pennsylvania State University.

He is a member of the Houston Geological Society, the American Association of Petroleum Geologists, the Society of Independent Professional Earth Scientists, Society of Petroleum Evaluation Engineers, and the American Petroleum Institute. Long active in the Society of Petroleum Engineers, he has served as Chairman of the Gulf Coast Section and currently serves as Director-at-Large for the Society.

TURTLE BAYOU - 1936 TO 1983 - CASE HISTORY OF A MAJOR GAS FIELD IN SOUTH LOUISIANA

Turtle Bayou Field, a major, multi-reservoir gas field with a variety of producing mechanisms, is located in the middle Miocene trend in South Louisiana. Nearing the end of a productive life which spans over 30 years, the field was discovered by Shell Oil Company in 1949 after unsuccessful attempts by two other majors. It is a typical, low relief, moderately faulted Gulf Coast structure, probably associated with deep salt movement. The productive interval includes 22 separate gas bearing sands in a regressive sequence of sands and shales from approximately 6500 to 12,000 feet. Now estimated to have contained about 1.2 trillion SCF of gas in place, cumulative production through 1982 was 702 billion SCF. Cumulative condensate-gas ratio has been 20 barrels per million. Recovery mechanisms in individual reservoirs include strong bottom water drive, partial edgewater drive, and pressure depletion. Recovery efficiencies in major reservoirs range from 40 to 83 percent of original gas in place. On decline since 1973, it is anticipated the field will be essentially depleted in the next five years.

In this paper geological development is reviewed by reference to three papers published between 1955 and 1964. Reservoir performance is reviewed by comparing actual performance to that anticipated in a study prepared by the author during 1963, while employed by Shell. To the author's knowledge, a detailed case history of this type of field has never been published. It is hoped the work will be of use to those with interests in gas accumulations in comparable geologic settings.

CALL FOR PAPERS

1984 ANNUAL MEETING OF THE GULF COAST ASSOCIATION OF GEOLOGICAL SOCIETIES

34th ANNUAL CONVENTION
OCTOBER 24-26, 1984

HGS members are invited to participate in the 1984 GCAGS Annual Meeting in Shreveport, Louisiana. The theme of the meeting, "Gulf Coast...Energy Heart of the Nation," concentrates on the continuing importance of the Gulf Coast to petroleum exploration and production. Through the years the Gulf Coast geologist has served as a pacesetter in exploration and innovative thinking for the nation.

In keeping with this theme, interested participants are invited to submit papers for presentation at the 1984 meeting in Shreveport and have them printed in the prestigious GCAGS *Transactions*.

All submittals will be screened prior to their acceptance for their content of applicable material to the theme and in accordance with the guidelines for papers required by the American Association of Petroleum Geologists.

Please submit titles and abstracts to Nolan G. Shaw, Program Chairman, 910 Pierremont Road, Suite 116, Shreveport, Louisiana 71106 by February 1, 1984. Final notification of acceptance of papers will be mailed by February 15, 1984.

HGS PIPELINE

The HGS *Bulletin* publishes letters to the editor in an opinion column called the **HGS Pipeline**. This is your chance to raise issues, express views, and share perspectives with your fellow members. Letters should be less than 500 words and should address topics of **technical or professional interest**. Space limitations require selectivity, thus it may not be possible to print all letters. We shall, however, attempt to print a representative sampling of the opinions which are submitted. Send your letter to:

Editorial Staff
Houston Geological Society
6916 Ashcroft
Houston, Texas 77081

BELIZE SEMINAR

March 2-6, 1984

The Permian Basin Graduate Center is sponsoring a field seminar on Modern and Pleistocene Shelf Carbonates of Belize, led by S. J. Mazzullo and A. M. Reid. The field seminar will compare and contrast modern carbonate shelf environments of Belize to those of the Permian Basin, Anadarko and Williston Basins, and other areas. The trip will include an overflight of the reef tract, shallow and deep back-reef lagoon and atolls, clastic dominated shorelines, and tropical karst features. Boat excursions will be made to snorkel shelf-edge barrier reefs, back-reef facies (and patch reefs), bay-lagoonal muddy and sandy facies tracts, mud banks and tidal island-channel systems, and boat and walking excursions to supratidal carbonate flats and Pleistocene reef exposures on Ambergris Cay. Fee includes airfare (Houston/Belize/Houston), all meals and lodging and guidebook. Cost of the trip is \$900. For information, contact Permian Basin Graduate Center, P.O. Box 1518, Midland, Texas 79702, (915) 683-2832.

LUNCHEON MEETING—JANUARY 25, 1984

JOHN K. BALSLEY—Biographical Sketch



John K. Balsley is a consulting geologist to the Mitchell Energy Corporation, and a 1983-1984 AAPG Distinguished Lecturer. He received an M.S. in Geology from the University of Utah in 1969. He has held positions with Phelps Dodge (mineral exploration), General Electric (coal exploration), and Amoco Production Company (oil exploration). He is the Field Leader for the AAPG Wave-Dominated Delta Field Seminar.

CRETACEOUS WAVE-DOMINATED DELTA, BARRIER ISLAND, AND SUBMARINE FAN DEPOSITIONAL SYSTEMS OF THE ROCKY MOUNTAINS: CLASTIC MODELS FOR HYDROCARBON EXPLORATION

The distinctive characteristics of the three sand-dominated depositional systems are described with emphasis upon criteria useful in recognizing the systems in outcrop and subsurface settings. Interrelationships between the systems are examined with the aid of a complete sediment dispersal network extending from fluvial coastal plain through wave-dominated delta, strand plain, and barrier island systems to basin floor submarine fans. This network was deposited along the western margin of the Cretaceous Interior Seaway and was subsequently exposed in the Book Cliffs of Utah and Colorado.

Wave-dominated deltas are commonly cusped to arcuate in plan, and sheet-like in cross section. Apparent widths range up to 40 miles (64 kilometers). Typical delta front facies tracts consist of laterally extensive shoreface-foreshore sequences locally replaced by distributary mouth bar deposits. The bar deposits reflect density flow processes and hyperpycnal inflow at the shoreline. Extensive coals and thin transgressive units cap the delta front sequences. The deltas occur in both vertically stacked and imbricate patterns.

The barrier island system is characterized by a sheet sandbody geometry, and by a dip-oriented facies tract consisting of a shoreface-foreshore barrier sequence replaced in a landward direction by tidal inlet and flood tidal delta deposits. Brackish-water lagoonal sediments overlie the entire tract. Characteristics of the system indicate deposition in a microtidal setting.

Submarine fans occur in distal settings beneath the prograding delta and barrier island systems. Fan deposits are lenticular in cross section and isolated in basinal shale. The deposits range from thickening-upward sandstone-shale sequences reflecting deposition in outer fan environments to thick, sand-dominated, channelized sequences reflecting deposition in more proximal fan environments.

EXPLORING IN THE HGS

Explorer Post #4 sponsored by HGS, meets every other Tuesday from 7:00 to 9:00 p.m. Post advisor is Tammy Braun, Geologist, Hillin Oil Co., phone number 658-8504. The Post recently underwent officer training at Camp Mohawk and took a field trip to some of the active faults around the Houston area. We are currently planning an HGS T-shirt sale and a super activity for next summer, a field trip to the Florida Keys.

SIPES 21st ANNUAL MEETING

The Society of Independent Professional Earth Scientists' 21st annual meeting titled "Innovative Exploration", will be held February 15-18, 1984 at the Carefree Resort Inn in Carefree, Arizona.

A Post-Convention Field Trip will examine the geology of the Grand Canyon February 18-21, 1984. The Field Trip will be by bus with overnight stays at the canyonside Kachina and Thunderbird Lodges.

Technical sessions will include:

Barry Sahgal, Director of Research Ladenburg Thalmann and Company, New York, New York. "Changing Trends in Oil & Gas Economics."

Carl Savitt, Western Geophysical Co. Houston, Texas "Earth Science is Becoming an Exact Science."

John J. Amoruso, Amoruso Petroleum Co. Houston, Texas "New Ideas and Petroleum Exploration"

Arthur J. Pansze, Geological Consultant Golden, Colorado Mineral Exploration in 1984."

Joseph Ferguson, Geophysical Consultant, Oklahoma City, OK "The Rise and Fall of the Cyril Basin, Oklahoma."

William Haxby, LaMont-Doherty Geological Observatory, Palisades, N.Y. "Exploring the Sea Floor from Space."

Guest speaker at the noon luncheon will be Assistant Secretary of the Interior, Garrey Carruthers.

In addition to technical presentations and the field trip, ladies activities and golf and tennis tournaments are available.

SIPES members and visitors should contact Tom Kennan, 417 Timber Ridge Road, Edmond, OK 73034, for additional information.

GCAGS AWARDS HONORARY MEMBERSHIPS

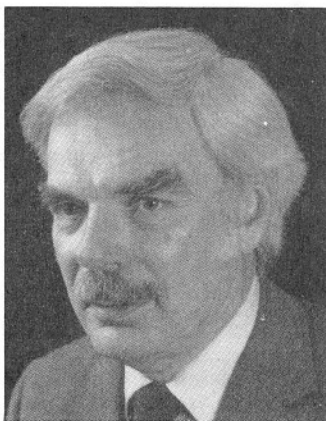
The Gulf Coast Association of Geological Societies at the annual meeting in Jackson, Mississippi, awarded Honorary Membership to five gulf coast geologists who have particularly contributed to GCAGS through the years. Honorary Membership awards were presented to **Scott J. Lysinger, Jame O. Lewis, Fred L. Smith, Jr., Edward C. Roy, Jr.,** and **P. M. Strunk**. Congratulations are due to each of these deserving individuals.

SEMINAR ON APPLIED HYDRODYNAMICS IN PETROLEUM EXPLORATION

A one-day course in Applied Hydrodynamics in Petroleum Exploration will be held in Midland, Texas, January 25, 1984. The course, taught by Eric C. Dahlberg, is sponsored by Permian Basin Graduate Center. For information contact Permian Basin Graduate Center, P.O. Box 1518, Midland, Texas 79702, (915) 683-2832.

HGS INTERNATIONAL EXPLORATIONISTS GROUP—JANUARY 18, 1984

ROBERT L. MABY, JR.—Biographical Sketch



Robert L. Maby, Jr. is a consulting geologist who has spent most of his professional life in the Middle East. In 1982, he retired from Aramco after 28 years in Saudi Arabia, London and New York. He received a B.S. degree in geology from the University of Wisconsin in 1947 and went on to do graduate work there as well. He left graduate school to accept his first job in the oil industry with Mid-Continent

Petroleum (now Sun Oil) in Oklahoma. In 1954 he resigned from Mid-Continent to join Aramco and has been involved in Middle East exploration and development since that time.

Bob has worked as field geologist, well-site geologist, stratigrapher, reservoir geologist, regional geologist, drilling superintendent, petroleum engineer and geophysicist. He spent five years in the field covering areas of central and northwestern Arabia and the Rub' al-Khali. The experience gave him a thorough overview of Arabian geology and allowed him the opportunity to develop in considerable depth some of his other interests — the archaeology, languages and culture of the peoples of Arabia. Bob traveled extensively throughout the Middle East and added the entire region to his area of geological and archaeological expertise. From field work, he moved into drilling operations, then to a temporary assignment in the New York headquarters, then back to Saudi Arabia as a petroleum engineer. In this capacity he made numerous contributions to the correlation of carbonate stratigraphy using log analyses, to instrumentation and measurements of bottom hole temperatures and pressures, to porosity and permeability studies and, most significantly, to the discovery of multi-billion barrel oil fields. In 1971, Bob was transferred to the London office to investigate and develop a method for intergrading seismic, magnetic and gravity data into a comprehensive geological framework. Upon completion

of this assignment, Bob returned to Saudi Arabia as regional geologist for the Middle East. In this responsibility he dealt not only with oil exploration, but also with production and processing operations. He remained in Saudi Arabia until his retirement from Aramco in 1982. Since that time, he has been active as a consultant in Houston and has also been deeply involved in the design and construction of a sophisticated oil industry museum in Saudi Arabia in which visitors can get "hands on" experience in performing many experiments related to petroleum technology.

Bob is a fellow of the Geological Society of America and the Geological Society of London, and is a member of AAPG, SEPM, the International Association of Sedimentologists and the Society of Petroleum Engineers. He is a 1982-1983 Distinguished Lecturer for the Society of Petroleum Engineers in the United States and Europe.

MIDDLE EAST OIL AND GAS ACTIVITIES

A review of Middle East oil and gas developments is presented through an analysis of oil and gas production history and a broad review of recent activities. In addition to establishing the overwhelming potential of Middle East reserves, changes in routing and magnitude of oil shipments between nations and trouble spots of supplies are focused on.

Recent exploration activities show that increasing emphasis is being placed on prospecting for non-associated Permian Khuff gas, with attendant development of gas-related industries. There is continued interest in deeper wildcat drilling and evaluation of older Paleozoic and, in some cases, Infracambrian sediments. A resurgence of interest in gravity and magnetic investigations is developing. A natural, perhaps irreversible, decrease in oil production is taking place in many fields, and secondary recovery mechanisms are receiving wider attention and application.

The trend for greater government involvement through formation of government owned companies to provide management direction for statewide petroleum development continues, with the established companies serving as technical operators. Firmer government control is being established by the use of many-tiered and interlocking overseeing agencies, and there is increased participation by geographically broader based groups of smaller companies. Placement of these activities and trends within the present political climate reveals many areas for concern to the U.S.



GCAGS - 1983 BEST PAPER AWARDS

John W. Cagle and M. Ali Khan were recipients of the A. I. Levorsen memorial Award and received first place in the Best Paper Awards for their paper titled "Smackover - Norphlet Stratigraphy South Wiggins Arch, Mississippi and Alabama."

Second Place went to Wayne M. Ahr and H. Ben Hull for their paper, titled "Buried Diagenesis and Reservoir Development in the Northern Haynesville (Smackover) Field, Louisiana."

There was a tie for third place between Clyde H. Moore who spoke on "Regional Patterns of Diagenesis, Porosity Evolution, and Hydrocarbon Production, Upper Smackover of the Gulf Rim", and Thomas E. Ewing's paper on "Growth Faults and Salt-Tectonics in the Houston Diapir Province - Relative Timing and Exploration Significance."

AAPG OFFERS SCHOOL ON PROSPECT EVALUATION

AAPG will sponsor a school on prospect evaluation, to be held at Stouffer's Greenway Plaza Hotel in Houston, February 6-9, 1984. Topics to be covered include volumetrics, economics, risk, field development and land evaluation, and post audit. The school will be taught by Ed Capen, Robert Megill, and Peter Rose. Tuition is \$830 and the registration deadline is January 23, 1984. Contact: AAPG Education Department, P.O. Box 979, Tulsa, OK 74101, (918) 584-2555.

AAPG SCHOOL ON BUSINESS SIDE OF OIL AND GAS

The AAPG will hold a school on the business aspects of oil and gas. Covered topics will be exploration contracts, financing, estate planning, taxation, regulations and pricing. The School will be held in Houston on February 27-29, 1984. Contact the AAPG Education Dept., P.O. Box 979, Tulsa, OK 74101, for registration. Cost is \$740.

GCAGS EXECUTIVE COMMITTEE MEETING

The annual meeting of the GCAGS Executive Committee was held in Jackson, Mississippi, on October 28, 1983, during the GCAGS convention. The meeting was chaired by GCAGS President Sarah Childress.

John Marble and his convention committees were given a commendation for a job well done. The convention was considered a successful one, although attendance was down somewhat. The estimate was 2150 attendees.

GCAGS FINANCES — Clyde Harrison, Chairman of the Financial Committee, gave a report on financial status of GCAGS, which is excellent.

PUBLICATION — Sales have been generally modest, but addition of the last *Transactions* volume and Vol. II (1983) of the *Comprehensive Index* (covering 1966-1981) is expected to result in increased sales. A leather-bound copy of Vol. II of the *Index* is being prepared and will be sent to Mrs. Olga Braunstein in memory of Jules Braunstein and in appreciation for his efforts in preparing the index and in helping GCAGS in so many ways.

STUDENT AID — A total of \$15,750 was spent last year in financial aid to students.

RAINWATER COLLECTION — The paleontological and stratigraphic collection of E. H. Rainwater has been donated to the Department of Geology of Trinity University. The Executive Committee approved a request for a \$4200 grant to provide storage cabinets as well as aid to student assistants in the cataloging of the collection. It will be available for anyone to use.

EAST TEXAS GEOL. SOC. LOAN — The Executive Committee approved the request from ETGS for a loan of \$15,000 to be used to help cover expenses in connection with the conference they have scheduled for March 27-28, 1984; the title is "Symposium on the Jurassic of East Texas." The loan will also help with publication expenses for the volume on the same subject. The loan will be repaid to GCAGS.

NEW OFFICERS — The new GCAGS officers were confirmed. They are: John T. Palmer, President; E. G. Wermund, Vice President; Charles S. Cook, Secretary; and Erwin W. Saye, Treasurer.

REPORTS OF SOCIETIES — Reports were received from the eleven societies represented at the Executive Committee meeting.

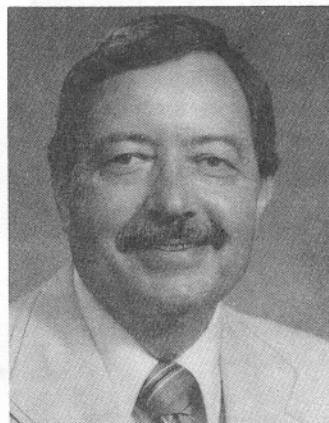
1984 MEETING — The Shreveport Geological Society will host the 1984 GCAGS meeting. The dates are October 24-26, and the theme is "The Gulf Coast — Energy Heart of the Nation." All are invited, and the call for papers has been issued.

This is a brief summary of only some of the things covered at the meeting. Other things such as awards will be reported in the usual manner. If you have questions or comments regarding GCAGS, please let me hear from you.

PEGGY J. RICE
GCAGS Representative

PERSONNEL PLACEMENT COMMITTEE

JOHN F. SIMPSON—Biographical Sketch



John F. Simpson, is President and CEO of Wallace Resources, Ltd. Wallace Resources is a domestic exploration and production company with operations extending from the Appalachian Basin to California. Secondary recovery projects have become the major activity of Wallace Resources since its founding in 1981.

Prior to that time, Mr. Simpson spent six years with the Division of

Corporation Finance of the U.S. Securities and Exchange Commission in Washington D.C.

Before going to Washington, Mr. Simpson's experience included independent geological work as well as employment by Goodyear Aerospace Corp., Clark Oil and Refining and Alex W. McCoy Associates. In addition, he served as part-time instructor at the University of Akron.

He has published eleven technical papers in geological topics and received his B.S. degree in Geology from Case Western Reserve University in 1951.

ABOUT THE COMMITTEE

The Personnel Placement Committee is presently attempting to computerize its information on job applicants and position vacancies in order to supplement the existing hard copy files of resumes and job listings. The availability of these hard copy files is described elsewhere in the *Bulletin*.

Other committee members include Sherry Laufer of Conoco, Jim Tholen of Aminoil and Kathy Rodgers of Geosphere Software.

NOGS OFFICERS 1983-84

The New Orleans Geological Society has announced the following officers for the 1983-84 year:

PRESIDENT	William W. Craig University of New Orleans
PRESIDENT-ELECT	Robert Sabate Koch Exploration Co.
VICE PRESIDENT	Richard A. Edmund Amoco Production Co.
SECRETARY	Kathleen S. Wiltenmuth Chevron USA
TREASURER	Robert H. Kitteringham Exxon USA
DIRECTOR	Robert J. Ingram Chevron USA
DIRECTOR	Rudolf B. Seigert Westover Oil Co.
DIRECTOR	Robert S. Kline Fossil Fuels of America, Inc.

4TH BIENNIAL SEG/USN JOINT TECHNICAL SYMPOSIUM ON THREE-DIMENSIONAL MARINE DATA COLLECTION, PROCESSING, INTERPRETATION, AND PRESENTATION
March 13-15, 1984

Sponsored by: Office of Naval Research and Society of Exploration Geophysicists

Hosted by: Naval Ocean Research & Development Activity (NORDA)
National Space Technology Laboratories (NSTL), MS 39529

In conjunction with SEG Continuing Education Workshop: "Understanding and Interpreting 3-D Seismic Data Volumes"

TOPIC:

The theme of the Fourth Biennial SEG/USN Joint Technical Symposium is Three-Dimensional Marine Data Collection, Processing, Interpretation, and Presentation. The goal is to present 3-D aspects from an operational viewpoint and to restrict discussions to marine applications in both shallow and deep water. In this context, the 3D symposium is intended to encompass such related topics as:

- Benefits of collecting and presenting information in 3-D format
- Navigational accuracies required for 3-D data
- Sensor location and location accuracy within a 3-D network in the marine environment
- 3-D measurements of dynamic properties
- Upper ocean variability in 3-D
- Anti-aliasing in time and space
- Tomography
- 3-D case histories
- QS³, narrow beam, and other instrumentation necessary for 3-D
- Techniques for presenting information in 3-D

ACCOMODATIONS:

A block of rooms and one-bedroom condominiums have been reserved at Diamondhead Resort, Bay St. Louis, MS. (Transportation between Diamondhead and NSTL will be furnished.) Diamondhead's facilities include swimming pools, tennis courts, golf courses, yacht club, and country club.

Single Room (\$42.00 + tax)

Double Room (\$48.00 + tax)

One-Bedroom Condominium (includes hide-a-bed sofa) (\$61.60 + tax)

Note: 75 motel rooms and 50 condominiums are reserved. Thus reservations should be made as early as possible to ensure accommodations of your choice.

Contact Diamondhead reservations office by calling toll free.

1-800-647-9550 (out-of-state)

(601) 255-1421 (Mississippi residents)

Room deposit is required

ALL MAJOR CREDIT CARDS ACCEPTED.

RESERVATION DEADLINE: February 13, 1984

Diamondhead is located on Interstate Highway 10, 54 miles NE of New Orleans International Airport and 20 miles W of Gulfport Regional Airport. Limousine Service Available.

Call 1-800-647-3957 or (601) 432-2649 for reservations. Please identify with SEG/USN JTS.

BIBLIOGRAPHY OF NEW ENVIRONMENTAL RESOURCES

The Environmental Committee of HGS notes several new sources of environmental information:

TECHNOLOGY AND MAN: STRATEGIES FOR HAZARDOUS WASTE CONTROL March 1983 U.S. Government Printing GPO stock #052-00300901-3, \$8.50

THE POLITICS OF HAZARDOUS WASTE MANAGEMENT, James P. Lester and Ann O'M. Bowan, Ed. The book examines the political context in which hazardous waste policy and management decisions are made and discusses the implementation of RCRA (Resource Conservation and Recovery Act) and TOSCA (Toxic Substances)

RENEWABLE ENERGY: THE POWER TO CHOOSE. Daniel Deudney and Christopher Flavin \$18.95 Norton and Co., New York. Economical alternative power sources have been underdeveloped due to political and institutional barriers.

ENVIRONMENTAL DIGEST, A biweekly summary of environmental news for the South Central States. Regional events are gleaned from a review of more than 150 news publications plus some exclusive stories. Typically about 8 pages long. \$165/yr. Some discounts are available. CEC members may receive free sample copies. Write Box 42825—Suite 598, Houston, Texas 77242-9990.

HAZARDOUS MATERIALS INTELLIGENCE REPORT. An International weekly newsletter published by World Information Systems on hazardous materials and wastes. P.O. Box 535 Harvard Square Station, Cambridge, MA 02238, \$325 in U.S.

PASSAGES

Jimmy D. Bowman, Vice President & General Manager, Huffco Turkey, died November 19, 1982.

Sam E. Dunnam, Oil & Gas Consultant, died in Houston, November 2, 1983.

Walton S. Launey, Retired Exxon Geologist, died November 9, 1982.

Edwin M. Reed, Retired, died February 12, 1983.

Frank J. Stangl, Retired Geologist, died November 12, 1983.

SOUTH-CENTRAL SECTION, GSA, March 26-27, 1984

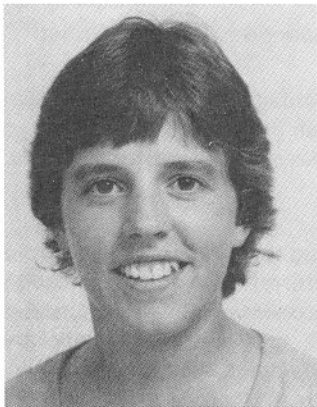
The University of Texas at Dallas will host the 18th Annual Meeting of the South-Central Section of the Geological Society of America, concurrently with the Texas Section of the National Association of Geology Teachers, on Monday and Tuesday, March 26-27, 1984. The meeting will consist of two days of symposia and volunteered papers, four field trips, a welcoming party, annual banquet, and luncheons. For further information, write or call the General Chairman, Richard M. Mitterer, (214) 690-2406 or 690-2401, Technical Program Chairman Emile A. Pessagno, Jr., (214) 690-2430, or Field Trip Chairman Kent C. Nielsen, (214) 690-2448, Geosciences Program, The University of Texas at Dallas, P.O. Box 830688, Richardson, Texas 75083-0688.

MEMORIAL SCHOLARSHIP FUND

As of July 1, 1983, the status of the Memorial Scholarship Fund was as follows:

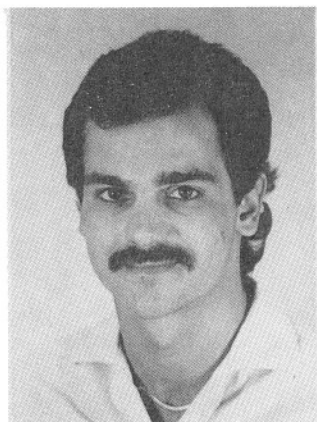
Corporate Bonds	\$84,000
Savings Account	12,600
	<u>\$96,600</u>

Interest from Fund investments currently allow \$5,000 in scholarship awards, and three recipients have been selected for this school year.



A \$2,000 scholarship has been awarded to Mary Ann Eccher, a graduate student at the University of Arkansas. Ms. Eccher graduated from Maquokata High School in Iowa. She then served three years in the U.S. Army, and financed her education through a combination of G.I. benefits and part-time employment. She compiled a 3.89 GPA at the University of Arkansas where she graduated Phi Beta Kappa. Her faculty

recommendations were exceptional including "she truly is one of our most outstanding students combining qualities of high energy, great determination, super intelligence, good wit, sweet disposition, and an ability to complete the task, no matter how difficult.



A \$1,000 scholarship will be awarded to Louis S. Mosconi, a graduate student at Stephen F. Austin State University. Mr. Mosconi graduated from high school in New Paltz, New York. He then attended State University of New York at Cortland and Ulster County Community College before transferring to Stephen F. Austin where he attained a 3.66 GPA and graduated cum laude. A professor wrote that "his

performance...has been genuinely superior and I would rate him as one of the best geology majors we have had over the last ten years".

A \$2,000 scholarship will be awarded to Jack B. Carter, last year's scholarship recipient, who is doing very well in his pursuit of a graduate degree at Stanford University.

FOUNDER

Warren L. Calvert

PATRONS (Individuals)

Billy Hagen	Bonnie M. Heath (Ocala, Fla.)
Earl P. Burke, Jr.	Leighton F. Young, Jr.
Brian E. O'Brien	Reaves W. Jackson, Jr.*
Robert J. Schrock	Merrill W. Haas
Carlton B. Speed*	Michel T. Halbouty
Marvolene Speed Bennett	Wayne V. Jones
Bill Forney	

HGS Remembrance Committee in memory of deceased members.

HGS Auxiliary in memory of deceased members.

PATRONS (Companies)

Stratagraph, Inc.	Sandefor Oil & Gas, Inc.
Panhandle Eastern Pipeline Co.	Ashland Exploration Co.
Houston Oil and Minerals Co.	Natural Gas Pipeline Co. of America
Mobil Exploration Co.	Highland Resources, Inc.
The Superior Oil Co.	Mesa Petroleum Co.
General Crude Oil Co.	Champlin Petroleum Co.
The Moran Co.	The Drilgmud Co.
Transco Exploration Co.	Hamilton Brothers Oil Co.
Austral Oil Company, Inc.	Horizon Exploration Co.

DONORS (Individual)

Morgan J. Davis*	Ira H. Cram
Jack Colle	Henry Dean
James A. McCarthy	Donald Degen
James I. Riddle	Byron F. Dyer
J. E. Werner	L. D. Ferrin
Robert L. Zinn	R. L. Hunt
George L. McCleod	J. B. Jamar
Robert R. Rieke	J. G. Joyce
John D. Bremsteller	Howard Kiatta
Ross Dawson	Tom Purcell
Lane H. Dixon	Vernon F. Neuhaus*
William H. McKaine (Hico, Tx)	John Rabenold
R. B. Mitchell	David Rapp
James W. Roach	Elegan C. Shield
Dean Grafton	David Sheridan
Thomas W. Blake	O. D. Weaver
Peter R. Vail	R. D. Woods
W. Bryan Brasel	
(Columbus, Ohio)	

DONORS (Companies)

Big "6" Drilling Co.	Hendrickson & McFarland
Dow Chemical, USA	Mitchell Energy & Development
Home Petroleum Co.	North Central Oil Corp.
Maralo, Inc.	Petroleum Information
Williams Exploration Co.	Quest Exploration & Development
Spartan Petroleum Co.	M. L. Randall Exploration, Inc.
United Texas Transmission Co.	Shubuta Oil Corp.
Walter Oil & Gas Corp.	Tejas Production Co.
Core Laboratories, Inc.	Texas Gas Transmission
Barber Oil Exploration	Tricentrol United States, Inc.
Dibler Seismic Service	Weaver Exploration
Enstar Petroleum	

CONTRIBUTORS (Individual)

A. L. Selig	C. E. McCarter
George P. Kerns*	James W. Wilson*
W. A. Boatman*	C. H. Roberts
Leslie Bowling*	John W. Skelly
Russell M. Seward, Jr.*	Fred Smith
Robert K. Steer	Ray A. Stuart*
Charles E. Trowbridge	C. D. Cantrell*
Norman Way	Cecil Hinson
O. Lee Ligon	Fred Schall, Jr.
W. B. McCarter	Wallace C. Thompson*

CONTRIBUTORS (Companies)

Hunt Exploration, Inc.	Robert J. Schrock in remembrance of Vernon F. Neuhaus
Phillips Petroleum Co.	

*Deceased

CONTINUING EDUCATION PROGRAM

January 27, 1984

EXPLORATION FOR CARBONATE PETROLEUM RESERVOIRS

Dr. Gerald M. Friedman
Department of Geology
Rensselaer Polytechnic Institute
Troy, New York

Sponsored by the Houston Geological Society-Continuing Education Committee

Short Course:

Friday, January 27 (8:30-11:30 A.M. and 1:00-4:00 P.M.) to be held in the Exxon Building Auditorium, 800 Bell Street.

Scope of Course:

This presentation gives a general model for exploration. Because the present is the key to geological processes, modern environmental models are studied. The Bahamas, Florida, barrier reefs of Australia, and the Arabian (Persian) Gulf are used as modern examples. Ancient environmental models used as examples include the Capitan reef complex of Texas and New Mexico. Problems of porosity, permeability, and dolomitization are discussed.

About the Instructor:

Dr. Gerald M. Friedman - Professor of Geology, Rensselaer Polytechnic Institute since 1964, and consulting geologist. From 1956-64, Amoco Production Company, Editor, *Journal of Sedimentary Petrology*, 1964-70. Lecturer, Continuing Education Program, AAPG, 1967-present. Distinguished Lecturer, AAPG, 1972-1973. President, Society of Economic Paleontologists and Mineralogists, 1974-75. President, International Assoc. of Sedimentologists (SEPM), 1975-78, and elected to Honorary Membership, 1982. Coauthor of *Principals of Sedimentology* and *Laboratory Exercises in Sedimentology*. Coauthor of textbook entitled *Exploration for Carbonate Petroleum Reservoirs*. Many publications on petroleum geology. Carbonate areas studied: MODERN — Bahamas, Bermuda, Florida, Red Sea, Great Barrier Reef (Australia), and Arabian Gulf; ANCIENT — Texas, New Mexico, Oklahoma, Western U.S.A., New York, and Canada.

PRE-REGISTRATION FORM:

Carbonate Reservoirs/Friedman

Short Course Fee: \$85.00 (on-site registration \$100.00)

Fee includes a copy of Dr. Friedman's coauthored book entitled *Exploration for Carbonate Petroleum Reservoirs*.

NAME: _____ PHONE: _____

ADDRESS: _____

COMPANY AFFILIATION: _____

Enclose check payable to: **Houston Geological Society, return with this form:

Dr. R. R. Schwarzer
GeoChem Research, Inc.
16920 Park Row
Houston, Texas 77084

**Please complete a separate pre-registration form for each participant.

CALL FOR PAPERS

The Montana Geological Society is assembling a producing Montana oil and gas fields volume for publication in the Spring 1985. The field papers will be assembled during 1984 and all geologists, petroleum engineers, landmen or other oilmen who operate or otherwise manage or work with producing fields in Montana are invited to participate with the society on this project. Field summary forms are available and can be obtained by contacting John J. Tonnsen, Editor, c/o General Hydrocarbons, Inc., 200 TW II Building, Billings, Montana 59101, (406) 248-5487.

DO YOU REMEMBER WHEN.....

The following statement about the FUTURE OF WESTERN OIL SHALES could have been made anytime in 1983. In fact, it was published quite a few years earlier. Do you remember when? Take a guess! The answer will appear in next month's *Bulletin*.

"The oil shale industry is a business for the future. Under present conditions, it cannot hope to compete with the petroleum industry. The energy and money of the people interested in oil shale should be devoted to the encouragement of scientific investigations and technical research. This alone can furnish a sound basis upon which there can be a healthy development of the Oil Shale Industry."

DEET SCHUMACHER
Bulletin Committee

GRANT GEOPHYSICAL, EXXON HOST 24 HGS MEMBERS ON SEISMIC FIELD TRIP

A total of 24 Houston Geological Society members attended a seismic field trip on Saturday, October 29. The free-of-charge outing was conducted by Grant Geophysical Corporation, which shot a seismic line in Cherokee County, east Texas, about 140 miles north of Houston. The seismic line was being shot for Exxon, which allowed the field operation to be observed by the group.

The trip was organized by Tridib K. Guha, (Conoco, Inc.), assisted by Kari K. Rekoske, (Superior Oil). Gerald J. Jasko and Lawrence E. Powell, (Grant Geophysical) conducted the field trip.

Grant's seismic system is a state-of-the-art, radio-controlled telemetry setup with the capability of overcoming minor gaps in coverage caused by difficulties in obtaining surface permits throughout the length of lines being surveyed. Arrays consist of geophones strung together on light cables, with recorder boxes arranged at intervals so as to record data on cassettes activated from the telemetry unit. Such systems have become operational in the field only during the past two years.

Attendees observed the arrays, recorder boxes, telemetry unit, shothole drilling and loading with dynamite, detonation of several shots, and some raw field records. The raw field profile obtained appeared to be readily interpretable. The data are being recorded on an eight-second format. Effective penetration appears to have been achieved to 32,000 feet. Shotholes were being drilled to about 150 feet from a drilling buggy equipped with fourteen ten-foot singles rotated from a ten-foot kelly. Dynamite was used, and the holes were partially tamped with mud, resulting in an energy-efficient shooting procedure.

We are grateful to the trip organizers, to Grant Geophysical and to Exxon for an excellently conducted field trip.

HARRISON T. ("SPUD") BRUNDAGE
Gulf Coast Editor
Petroleum Engineer International

PHOTOS BY: Carol Carlson



Drilling of shot hole.



All-terrain vehicle



Jerry Jasko explaining surveying and permitting to participants.

REVIEW OF EXPLORATION ACTIVITY

OFFSHORE GULF COAST

CNG Producing will drill a 17,500' **Frio** wildcat on **Mustang Island Block 775-L**, offshore Texas. The #1 State Lease 88569 is 3-3/4 miles northeast of Oligocene gas production at Mustang Island Block 774-L Field.

Amoco has scheduled a 17,000' **Miocene** test on **Eugene Island Block 85**, offshore southwest Louisiana. The #1 OCS-G-5487 is 4-1/2 miles southwest of Eugene Island Block 77 Field, and 1-1/2 miles northwest of Exxon's #1 OCS-G-5198, a 16,700' wildcat currently drilling below 7500'.

A 13,600' wildcat will be drilled by Exxon in 1210' of water on **Ewing Bank Block 919**, offshore southeast Louisiana. The #1 OCS-G-5807 is 30 miles south of Pliocene gas production at Grand Isle Block 95 Field.

Conoco has scheduled a sixth well on **Green Canyon Block 184** in the northern Gulf of Mexico, about 100 miles off southwest Louisiana's Terrebonne Parish, and site of their recently-reported deep-water oil discovery. The #1 OCS-G-4518, drilled in 1981, flowed at a combined rate of 2769 BOPD and 3398 MCFGPD from 3 separate intervals between 7080' and 9310', and represents the deepest oil find on record in the Gulf of Mexico. Results of the other exploratory tests will be released after completion of the #6.

CNG Producing recently reported a dual **Miocene** oil and gas discovery on **South Timbalier Block 77**, offshore southeast Louisiana. The #1 OCS-G-4827 flowed 862 BOPD plus 1100 MCFGPD, and 5.2 MMCFGPD plus 284 from two unspecified intervals below 15,000'.

ONSHORE GULF COAST

Lower Texas Gulf Coast

Abraxas Petroleum has staked location for the #1 Lopez Heirs, 5200' **Yegua** test 2-1/2 miles south of Jackson production at A&A Field in **Starr County**. Nearest Yegua production is 4-1/4 miles southeast in Lockhart Field. Structure on the Yegua horizon appears to be steep easterly dip.

In **Nueces County**, Prodeco Exploration has scheduled an 11,000' wildcat 1-1/4 miles southwest of Frio production in Northwest Corpus Channel Field. The #1 State Tract 29/30 should evaluate several **Frio** sands productive in the surrounding area. At the Upper Frio horizon, the wildcat spots upthrown to a down-to-the-southeast fault and in a trough separating the Corpus Channel and Encinal Channel Fields.

TDC Engineering has completed the #1 Vergara "C" as a new discovery 2-1/4 miles northwest of "Lobo" production at Villegas Field in **Webb County**. Production is from a pair of "**Lobo**" sands, flowing 2708 MCFGPD and 127 BOPD from 9580-9746', and 1024 MCFGPD and 46 BCPD from 9302-76'. Structure at the lower Wilcox horizon appears to be a moderate east dip.

Also in **Webb County**, the same operator has opened Agua Azul Field at the #1 Bonugli, flowing 4576 MCFGPD through "**Lobo**" perms 10,734-48'. Discovery is 2/3 mile southwest of lower Wilcox gas production at Hay Normas Field.

Middle Texas Gulf Coast

Exxon has staked location for the #1 Shelton, 10,100' wildcat 6 miles southwest of Wilcox gas production in Atkinson West Field in **Live Oak County**, and 4-1/2 miles southeast of the one-well Whitsett Field (Wilcox oil). The

wildcat should test **Taylor**, where a thin porous sand was encountered in a nearby Cities Service dry hole. Structure at the Base Austin Chalk horizon consists of a broad south-plunging nose.

Newton Oil & Gas has opened Tri-Bar North Field 1 mile northeast of Olmos gas production at Tri-Bar Field in **LaSalle County**. The #1 Lyssy flowed 237 BOPD and 900 MCFGPD from **Olmos** perms 8063-96'. At the Lower Wilcox horizon, the discovery spots on regional southeast dip in close proximity to an up-to-the-coast fault.

In **Frio County**, Fair Energy has completed the #1 Nixon & Dillard "E" to open Fair-Ray Field 2 miles southeast of Austin Chalk production in Goldfinch Field. Flow rate was 20 BOPD and 8000 CFGPD from the **Escondido** at 4433-44'.

Upper Texas Gulf Coast

Enterprise Resources has staked location for the #1 Glass, a 10,200' basal **Frio** test 3 miles south of Frio and Miocene oil production in Nash Dome Field in **Brazoria County**. Well-developed Frio sands are present in the area and are productive (below 9700') about 6 miles to the west. Structure at the **Nodosaria** horizon appears to be moderate southwest dip.

A 12,500' wildcat is planned by Tenneco 3 miles southwest of Vicksburg gas production in the one-well Ulrich Field in **Harris County**. The #1 San Jacinto River Authority should test **Yegua**, where some thin sands were encountered in Ulrich Field. Structure at the *Textularia warreni* horizon is fairly steep irregular southeast dip.

Six new field discoveries have been reported during the past month. In **Liberty County**, Mosbacher Production opened Devers Field at the #1 Daniel, et al., flowing 1492 MCFGPD from the **Yegua** at 11,402-467'. In **Jefferson County**, Rainbow Field was opened at the Genesis Petroleum #1 Grinnell Texas Co., flowing 3033 MCFGPD and 98 BCPD from **Hackberry** perms 9367-73'. In **Orange County**, Kilroy Company of Texas completed the #1 Kerr as a **Frio** discovery, flowing 4004 MCFGPD and 182 BCPD from 8456-62'. Also in **Orange County**, Kilroy opened Kelly Field at the #1 Brown, flowing 200 BOPD and 135 MCFGPD from **Frio "Hartburg"** perms 8518-24'. In **Hardin County**, a new **Wilcox** discovery was completed by Joe W. Elsbury at the #1 Doty-Jackson "W", flowing 60 BOPD and 300 MCFGPD from 9787-97'. And in **Madison County**, Northern Michigan Exploration opened East Madisonville Field at the #1 Scholz, flowing 318 BOPD, 509 MCFGPD and 243 BWPD from **Georgetown** perms 9784-9832'.

South Louisiana

Exxon will drill a 12,000' **Eocene** test 2-3/4 miles south of Cockfield production at West DeQuincy Field in **Calcasieu Parish**, southwest Louisiana. The #1 Boise-Southern should encounter some thin Cockfield sands, originally productive about 1 mile north. At the *Nonion struma* horizon, the wildcat spots on a south-plunging nose and in proximity to a possible down-to-the-southeast trapping fault.

In **Beauregard Parish**, two wildcats are scheduled in a previously unproductive area. The H.J.F. Corporation #1 Bailey will test the **Cockfield** to 8500' 4-1/2 miles northeast of abandoned Cockfield production at Juanita Field. Husky Oil will drill a 13,500' **Wilcox** test, the #1 Crown Zellerbach, 4-1/4 miles north of Cockfield production at Longville Field. Structure at the Top Wilcox horizon is predominantly southeast dip cut by numerous small-scale faults with local trapping potential.

In **Cameron Parish**, Birthright Exploration will test the lower **Miocene** at the #1 Broussard, et al., a 10,200' wildcat located 1-1/2 miles north of middle and lower Miocene production at Grand Lake Field. A nearby and downdip Texaco dry hole encountered numerous lower Miocene sands, but none were productive. The wildcat spots on the northeast flank of the faulted Grand Lake Field anticline at the *Planulina* horizon.

Sun Exploration and Production will drill a 15,000' lower **Tuscaloosa** wildcat 13 miles southwest of lower Tuscaloosa production at Greensburg Field in **St. Helena Parish**, southeast Louisiana. The #1 Denkmann Associates should encounter good lower Tuscaloosa sand development, similar to that present, but wet, in a Getty dry hole 4-1/2 miles northwest. Structure on the lower Tuscaloosa horizon is regional southwest dip.

In **St. John the Baptist Parish**, Sandefer Petroleum has scheduled an 11,400' lower **Miocene** test 1-1/4 miles northwest of Miocene and Anahuac production at Bonnet Carre Field. The #1 Riverlands Golf Club will test *Marginulina ascensionensis* and *Siphonina davisii* sands, expected to be well-developed in this area. At the *Marginulina ascensionensis* horizon, the wildcat spots on the southwest flank of a positive structural feature in the downthrown block of a down-to-the southeast fault.

MESOZOIC TREND

East Texas Basin

Hudson Resources will drill a 14,500' wildcat 4 miles northeast of Glen Rose production in Fairway Field at the **Anderson-Henderson County** line. The #1 Isaacs should test into the upper **Cotton Valley**. Wildcat is 1-3/4 miles north of the Mosbacher #1 Heidleberg, a 13,006' prospective new discovery for which no details have as yet been released. The new test is in the deeper part of the East Texas Basin located between the Fairway-Frankston structure and the Larissa Field structure.

Primary Fuels has completed the #1 Glass Unit as a **Norphlet** discovery 1-1/2 miles southeast of Smackover production at South Atlanta Field in **Cass County**. Flow rate was 200 BOPD and 570 MCFGPD from 11,912-19' and 11,931-36'. Discovery is 9-1/2 miles northeast of the Frazire Creek Field discovery, originally completed in the Norphlet flowing 950 BOPD, but later plugged back and re-completed as a Cotton Valley oil well after the Norphlet went to water. At the Top Smackover horizon, the new producer spots on the south flank of the South Atlanta Field structure.

In **Houston County**, Santa Fe Energy has completed a new **Glen Rose** discovery 4 miles south of Fort Trinidad Field. The #2 Eastham State Farm flowed 1399 MCFGPD and 48 BCPD from perfs at 11,308-451'.

A new **Rodessa-Hill** oil discovery has been completed by Clemco and Sun Exploration and Production 1-1/2 miles southeast of Como Field in **Hopkins County**. The #1 Morris flowed 160 BOPD and 143 MCFGPD from 7954-71', opening Como, Southeast Field.

In **Shelby County**, Marshall Exploration has finalized a **Pettet** gas discovery at the #1 Howard, 1-1/2 miles west of depleted Blossom production in Shelbyville Field. Flow rate was 3667 MCFGPD (14,628 MCFGPD, AOF) and 20 BCPD from perfs at 6508-16'.

Saxon Petroleum has completed the #3 Hill "A" as a new **Rodessa** discovery 2 miles southwest of Rodessa and Woodbine production at Prairie Lake Southwest Field in **Freestone County**, flowing 2.8 MMCFGPD and 209 BCPD from 8875-83'. CAOF is 29,984,600 CFGPD.

North Louisiana-South Arkansas

Huggs, Inc. and Marlin Exploration, et al., have staked location for the #1 Rockhold, an 11,000' **Smackover** test 3 miles north of Smackover production at Summerfield Field in **Claiborne Parish**. The wildcat is near the northern limit of the Smackover stratigraphic trend and regressive Smackover "A" buildup. At the Top Smackover horizon, the new test spots on regional southwest dip and is upthrown to a graben-bounding fault of the State Line Graben System.

In **Lafayette County**, Arkansas, Goldsberry Operating Company has completed the #1 Mabry as a new **Smackover** gas-condensate discovery one mile south of the multi-pay Lewisville Field. Flow rate was 1000 MCFGPD and 50 BCPD from perfs at 7942-45'. The new producer spots on the southwest flank of the faulted Stamps structure at the Smackover horizon. Production is most likely related to local porosity development.

Mississippi-Alabama-Florida

Union Texas Petroleum will drill a 19,000' **Cotton Valley** wildcat 3-1/2 miles southeast of Glass Dome in **Warren County**. The #1 Anderson-Tully is 13 miles southwest of nearest production (Cotton Valley gas) at the one-well Newman Field. The Cotton Valley in this area probably consists of alternating marine and red bed sequences. The new test appears to be located on the southeast flank of the Glass salt dome, but deep structure is speculative due to lack of control.

In **Escambia County**, Alabama, Inexco has staked location for the #1 Cogle, et al., 41-18, a 15,500' wildcat 1-1/2 miles north of Norphlet gas-condensate production at Flomaton Field. A nearby Pruet & Hughes dry hole encountered a tight Smackover section and no shows in the Norphlet. At the Top Smackover horizon, the wildcat spots on a small structural high across the Pickens-Gilbertown-Pollard fault system from the Flomaton Field structure.

BILL EISENHARDT
Geomap Company

MEMBERSHIP COMMITTEE

NEIL D. SAMUELS—Biographical Sketch



Neil D. Samuels is a geologist with Amoco Production Company (USA). At Amoco he has worked the fractured Silurian sandstones of the Appalachians, the Rome Trough in Kentucky, and the Cambro-Ordovician of the Mississippi Embayment in Tennessee, Missouri, and Arkansas. Currently he is working the Wilcox Trend of South Central Texas. Neil graduated from Ohio State University in 1976 with a B.S. degree in Geology, and received an M.S. degree in Geology from the University of Cincinnati in 1979.

ABOUT THE COMMITTEE

The Membership Committee processes applications for Society membership. Neil has four members on the committee who help review each membership application for accuracy, completeness, and eligibility of the applicant.

HGS - HGA: ART QUESTIONNAIRE

Members of the HGS and HGA have been known for their multi-talents in the art world, be it painting, sculpture, or photography. To publicise this aspect of the Society, arrangements for display of members' artwork is being made available through the various San Jacinto Savings Association offices in Houston. If you are interested in showing your art to the public, please fill in the form below and return it no later than February 24, 1984 to:

Alan Ferguson - Campbell Energy Corporation
Four Greenway Plaza, Suite 634
Houston, Texas 77046

NAME: _____

ADDRESS: _____

PHONE: _____

COMPANY: _____

(Please Circle)

MEMBER: HGS HGA GSH

Type of Artwork:

Painting Sculpture Photography Macrame Other _____

Preferred display area:

Central SW SE NW NE Houston

Working on Committee: YES _____ NO _____

TRAP AND SKEET SHOOT

An HGS Fun Trap and Skeet Shoot is being planned for May 19 at the Greater Houston Gun Club (SW Houston). The event will be executed similar to last year where one round each of trap & skeet will be shot and a third round of the shooter's choice will complete the shoot. Although the dove tower may be a bottleneck, it may be included as a choice for the third round. Fifteen clay pigeons are released from a 40-foot platform. A hit on the first shot scores 2 points, while a hit on the second shot scores 1 point.

Interested shooters should begin assembling a 5 person team to shoot together. Those without a complete team will be assembled into a team and starting times assigned beginning around 7:30 A.M. Approximately 150 shooters can be accommodated. Look for a registration form in the February bulletin.

Thanks to **Dresser, Ex-Log, The Analysts, Baroid, & Big E Drilling**, who are sponsors of the event, the cost per shooter will be approximately \$35. This includes shells & clay pigeons.

There may also be a shoot in the fall of 1984. Anyone interested in participating or helping in the organization of an October, 1984 HGS trap and skeet shoot should contact J. David Lazor c/o Valero Producing Company, 11767 Katy Freeway, Suite 660, Houston, Texas 77079, telephone 497-6711.

HGS GOLF TOURNAMENT

The annual HGS Golf Tournament will be held on Monday, March 26, 1984 at the Kingwood Country Club. A new format for this year's tournament has almost been finalized. We plan to play a four-person team best ball tournament with both individual and team prizes. A shot-gun start at approximately 11:30 A.M. using all three of the Kingwood courses will be followed by an informal Bar-B-Q dinner and presentation of awards. So get your plans made and watch next month's *Bulletin* for more details and entry forms.

Last year over 15 companies contributed about \$7000 in cash and prizes for this event. As the individual entry fee only pays for green fee, cart, driving range use, locker room service and inner, those contributing sponsors have furnished all the beverages and prizes that were awarded. Without the continued support of its sponsors, our tournament would not be a reality. Other companies have the opportunity to be a part of this event by contributing to its support. Those companies donating \$200 or more will be designated as "Birdie" sponsors and will sponsor one hole of their choice. Those donating \$100 will be designated as "Par" sponsors. Large posters will list all sponsors at the pro shop and dining room in the club house.

Please give this request your prompt consideration. Any company interested in contributing money or merchandise towards a better golf tournament please contact either Gary Wirey at 469-1874 or Gary Noe at 358-0787.

GARY WIREY

Golf Tournament Chairman

LAS VEGAS/BIG BAND DANCE NIGHT '84

On Friday February 24th the Houston Geological Society and Geophysical Society of Houston will jointly present the third annual Las Vegas Dance Night. The '84 version of Las Vegas Night promises to be even bigger and better than last years event where two thousand dollars worth of prizes were won by members and their guests. In addition, this year's event will have a big band for your dancing pleasure.

The grand prize again this year will be a trip for two to Las Vegas, determined by drawing. There will be many other prizes to appeal to nearly everyone's taste along with lots of hors d'oeuvres. Plan now to attend and bring your friends for a fun filled evening. Watch for the special announcement in next months *Bulletin*.

SYMPOSIUM ON ENERGY FROM BIOMASS AND WASTES

The Institute of Gas Technology is sponsoring the Symposium on Energy from Biomass and Wastes VIII January 30 - February 3, 1984, in Lake Buena Vista, Florida. The meeting is designed to address:

- Biomass Production and Procurement
- Combustion
- Thermal and biological gasification
- Economics and Energetics
- Commercialization activities

For additional information contact Institute of Gas Technology, 3424 South State Street, Chicago, Illinois 60616.

4th ANNUAL RACQUETBALL TOURNAMENT AND PACMAN COMPETITION March 10, 1984

The Houston Geological Society will hold its Fourth Annual Racquetball Tournament on Saturday, March 10, 1984. The location will be the same as the last three years: Courts Etc. Racquetball Club, 2620 Tanglewilde. The club is in the Woodlake Shopping Center near Westheimer and Gessner. The tournament is open to all HGS members and family.

First round matches will begin at 10:00 A.M. All players will be notified, in advance, of their starting time. However, everyone is encouraged to attend all day. Also, last year winners will be seeded.

Each person should indicate level or skill on the entry form (please, no sandbaggers). The tournament director may reclassify people if necessary. The tournament will be by single elimination with a consolation round. Round robins will be used if any division has less than six players. Matches will be two games to 15 points with a tie breaker to 11. Penn racquetballs will be used this year.

Entry fees are \$15.00 per person. This includes court time, balls, lunch, refreshments, T-shirts, and trophies. The **deadline** for signing up is **Friday, March 2, 1984**. The field may be limited so entry fees should be mailed as early as possible.

Sponsors for this year's tourney are **Exlog, Reservoirs Inc., Formatech, Cambe, Dresser, Continental Labs, Prokop, Schlumberger Offshore, and Stratagraph**. To enter please fill out the following:



NAME: _____

BUSINESS ADDRESS: _____

BUSINESS PHONE: _____

CLASS (circle one) A B C NOVICE

Entry fee: \$15.00 (enclose check made payable to **HGS Entertainment Fund**)

Mail to: Herb (Stu) Stouffer
Hunt Oil Company
2950 North Loop West
Suite 900
Houston, Texas 77092
681-9742

ENTERTAINMENT CALENDAR 1984

EVENT
<i>Las Vegas Night</i> Friday, February 24
<i>Racquetball</i> Saturday, March 10
<i>Golf</i> Monday, March 26
<i>Tennis</i> April/May
<i>Trap & Skeet</i> Saturday, May 19
<i>Bar-B-Q</i> Friday, May 18
<i>Shrimp Peel</i> Friday, October 5

COORDINATORS
Stu Dorn (Stratagraph - 784-2144)
Stu Stouffer (Hunt Oil - 681-9742)
Gary Wirey (Wirey Resources - 469-1874)
Wayne Sealey (Core Lab - 460-9600)
David Lazor (Valero - 497-6711)
Stephanie Hrabar (Cons. Geo - 683-0638)
John Gorman (Sohio) Ken Nemeth (Adobe)

SPONSORS
Stratagraph
Cambe, Exlog, Reservoirs, Inc.
Data Log, Cambe, Geomap, Stratagraph, Baroid, PGA & Assoc.
Stratagraph, Welex, PI, Core Lab
Baroid, Dresser, Exlog, The Analysts, Big E Drilling
Data Log
Data Log, Milchem



Houston Geological Society

6916 Ashcroft
Houston, Texas 77081

PUBLICATIONS ORDER FORM & INVOICE

QTY.		PRICE	TOTAL
_____	HGUSTON AREA ENVIRONMENTAL GEOLOGY: SURFACE FAULTING, GROUND SUBSIDENCE, HAZARD LIABILITY (1981), E. M. Etter, Editor. 6 papers plus extensive bibliography. 164 p., paper	\$ 7.50	\$ _____
_____	*DELTAS IN THEIR GEOLOGIC FRAMEWORK (1966), 3rd printing 1981), M. L. Shirley, Editor, J. A. Ragsdale, Asst. Editor. 11 papers (Gulf Coast, Appalachians, Germany, etc.) plus Appendix of delta maps, 252 p., cloth	\$11.00	\$ _____
_____	*DELTAS—MODELS FOR EXPLORATION (1975, 2nd printing 1981), M. L. Broussard, Editor. 23 papers (mostly U.S., including 6 general studies) plus Appendix of delta maps, 555 p., cloth	\$16.00	\$ _____
_____	STRATIGRAPHIC CROSS SECTIONS OF SOUTHEAST TEXAS (1979), by HGS Cross-Section Committee. 4 N-S sections (all extend offshore), 2 E-W sections (1 is offshore), index map, in folder	\$25.00	\$ _____
_____	DAMON MOUND, TEXAS (1979), Field Trip Guidebook. E. M. Etter, Editor	\$ 7.50	\$ _____
_____	MEMBERSHIP DIRECTORY (May 1983), 4600 Members listed	\$10.00	\$ _____

SPECIALLY PRICED

_____	ABNORMAL SUBSURFACE PRESSURE (1971), by HGS Study Group. 4 papers (origins, identification, etc.) plus bibliography, 92 p., paper.....WAS \$ 3.00.....NOW	\$ 2.00	\$ _____
_____	LOUISIANA CHENIER PLAIN AND SOUTHEAST TEXAS GEOMORPHOLOGY (1979), Field Trip Guidebook by R. T. Kaczorowski and S. Aronow...WAS \$ 6.00...NOW	\$ 4.00	\$ _____
_____	OIL FIELDS, SUBSIDENCE AND SURFACE FAULTING IN THE HOUSTON AREA (1979), Field Trip Guidebook by M. M. Sheets...WAS \$ 5.50.....NOW	\$ 3.00	\$ _____
_____	LOWER TERTIARY OF THE BRAZOS RIVER VALLEY (1979), Field Trip Guidebook, D. G. Kersey, Editor.....WAS \$10.00.....NOW	\$ 6.00	\$ _____
_____	LIGNITE RESOURCES IN EAST-CENTRAL TEXAS (1979), Field Trip Guidebook, J. L. Jobling WAS.....\$ 6.50.....NOW	\$ 2.00	\$ _____

TOTAL ENCLOSED \$ _____

*Both for \$25.00

MAIL PUBLICATIONS TO: (Please print)

All orders must be prepaid.

Price includes postage, handling and tax.

Make checks payable to:
Houston Geological Society

HGS EMPLOYMENT COLUMN

The services offered by the HGS Personnel Placement Committee presently involve three types of activities:

1) **Job Openings:** A file of job openings listed with the committee by either companies or employment agencies is maintained in the offices of John Simpson, at 900 One Allen Center (telephone 759-9258). Job applicants are welcome to review the listings weekdays from nine to five.

2) **Resume File:** A file of applicant resumes is maintained in the offices described above. Resumes are held for one year unless the applicant requests their removal. Potential employers are welcome to review these resumes for openings with their firms.

3) **Advertisement Column:** The committee will publish short "Positions Available" ads from companies but not from employment agencies in the HGS monthly *Bulletin*. Responses to these ads should be addressed to the attention of the code number and will be forwarded unopened.

"Positions Wanted" ads may be placed by the applicant at no cost, but should include a phone number and hours to contact.

Ads will not be re-run automatically, but may be submitted again for subsequent issues. Submit 2-3 line ads, and responses to code numbers to:

Sherry Laufer
Conoco Inc.
P.O. Box 2197, Suite 1434
Houston, Texas 77252

Direct questions concerning the column to Sherry Laufer, at 965-2865 (days).

The committee is attempting to increase communication between geologists and prospective employers with speed, discretion and simplicity. To do this, we have omitted a means of following up, so if our efforts are productive for you, please let us know.

POSITIONS WANTED

Explorationist: 30+ years experience with one major and two independents as prospect generator in Permian Basin, East Texas and Gulf Coast. Seeks retainer or exploration position with active independent. 334-2946 (days or eves).

Geological/Geophysical Draftsman: 5+ years experience, BS Geology, all phases of geological drafting. Seeks Geological Drafting or Geotechnician position. All inquiries considered. 879-7323 (messages).

Geologist: BS Geology, 1-1/2 years experience mud-logging onshore/offshore Louisiana/Texas, 2-1/2 years experience major oil company. Desires entry exploration or geo-tech position. 772-8744 (days or eves).

Geologist: 6 years of Gulf Coast Exploration. MBA degree, special skills: remote sensing, risk and economic evaluation, log analysis, published in O&GJ, July, '83. 486-1587 (days or eves).

Geologist: MS 13 years experience. Oil, gas, mineral prospecting and exploration. Mineralogy, petrography, sedimentology, reservoir research. 6 years oil and gas, 7 years minerals. Seeks permanent position in research or exploration. 434-1658 (days or eves).

Geologist: BS, 3 years mudlogging and wellsite geology in the Gulf Coast and Austin Chalk. Starting MS at U of H. 432-0281 (days or eves).

Senior Exploration Geologist: MS degree, +25 years responsibility for prospect generation, sedimentary basin analysis, trend evaluation, and frontier exploration. Experience in long and short range planning, establishment of policies and procedures, budgeting, cost controls and capital project development. (713) 932-7153.

Geologist: 14 years, Texas and Louisiana Gulf Coast experience, 7 years as an independent, proven track record as oil finder, seeks retainer to generate prospects. (713) 847-4334 weekdays 8:30 to 5:30.

EAST TEXAS EXPLORATION SYMPOSIUM

March 27-28, 1984

Tyler, Texas

The East Texas Geological Society announces a conference in exploration techniques for those interested in Jurassic oil and gas occurrences in the inner Gulf Coast.

Technical sessions include:

- Jurassic exploration trends in East Texas
- Seismic stratigraphy workshop (focus on East Texas)
- Gravity models for East Texas
- Well log analysis of Jurassic units
- Jurassic stratigraphy and facies
- Salt tectonics and basinal structural development
- Studies of individual oil and gas fields

Symposium proceedings are to be published. For information contact:

Mark Presley
Tyler Texas
214-561-1794

Chris H. Reed
Tyler, Texas
214-581-1068

Preregistration

Early registration is possible at reduced rates as follows:

Conference (includes publication) \$145.00
Evening Social (per person) 15.00
Spouse Registration 16.00

A Deposit of \$25.00 is requested, with full payment by February 1, 1984, when offer expires.

Hotel Accommodations are available at the Sheraton Inn-Tyler and can be provided with your preregistration.

AWG MEETING: January 18, 1984

The Association for Women Geoscientists invites all interested persons to attend their dinner meeting. The meeting will include:

TALK BY: Dr. David L. Amsbury,
Earth Sciences and Applications Division
NASA/Johnson Space Center

TOPIC: "Remote Sensing from the Space Shuttle; 1. An Overview of Different Kinds of Observations and 2. Focus on Specific Geological Areas"

The meeting will be held at the Quality Inn Greenway Plaza located at 4020 S.W. Freeway at Wesleyan

COCKTAILS: 5:30 PM in the Director's Room

DINNER: 6:30 PM

\$10.50 members \$12.50 non-members

SPEAKER: 7:30 PM

R.S.V.P. Joan F. Sarah-Foster 463-6934 or Nancy Herlinger 391-9339 by Monday, January 16, 1984.

All no shows and late cancellations will be financially responsible for the cost of the dinner.

HOUSTON GEOLOGICAL AUXILIARY

You are invited to become a member of the HOUSTON GEOLOGICAL AUXILIARY for the year 1983-1984.

Dues are \$10 per year, payable at this time.

Make checks payable to HOUSTON GEOLOGICAL AUXILIARY.

MRS. WILLIAM F. HOWELL
254 BRYN MAWR CIRCLE
HOUSTON, TEXAS 77024
(President 1983 - 1984.)

YEARBOOK

(LAST NAME)	(HUSBAND'S NAME)	(YOUR NAME)
ADDRESS _____	ZIP CODE _____	
HOME TELEPHONE _____	(HUSBAND'S COMPANY) _____	
CIRCLE ONE:	Current Member	New Member
	Reinstated Member	

COMMITTEE (Circle Preference)

NAME _____	TELEPHONE _____			
COURTESY	MEMBERSHIP	NOTIFICATION	YEARBOOK	
SOCIAL PARTIES:	FALL	WINTER	SPRING	MAY
COMMENTS: _____				

NEW ACTIVE MEMBERS

- | | | | | |
|--|---|---|--|--|
| <p>ALEWINE, JAMES W.
Consulting Geologist
12502 W. Virginia Ave.
Lakewood, Colorado 80228
986-5373</p> <p>ARRAMBIDE, GAIL R.
Sr. Geophysicist
Exxon Company USA
P.O. Box 2180-4550 Dacoma
Houston, Texas 77001
680-5292</p> <p>ATKIN, RONALD R.
Petroleum Geologist
Gulf Oil Expl. & Prod. Co.
P.O. Box 1635
Houston, Texas 77251
754-7985</p> <p>BAILEY, DONALD L.
Sr. Geologist
Gulf Oil Corp.
P.O. Box 36366
Houston, Texas 77236
754-7152</p> <p>BARTELL, LARRY D.
Geologist
Hemingway, Bartell & Assoc.
1612 Esperson Bldg.
Houston, Texas 77002
228-6668</p> <p>BASS, SUSAN L.
Geologist
Amerada Hess Corp.
1200 Milam-6th Floor
Houston, Texas 77002
658-9770</p> <p>BIFANO, FRANCIS V.
Offshore Region Geologist
Monsanto Oil
5051 Westheimer #1300
Houston, Texas 77056</p> | <p>BLOOMER, GAIL
Mgr. Exploration Studies
Gulf Oil Expl. & Prod. Co.
P.O. Box 1635
Houston, Texas 77251
754-8800</p> <p>BRANT, KAREN E.
Geologist
Anglo National Expl. Co.
2500 E. T. C. Jester #300
Houston, Texas 77008
868-9200</p> <p>BUHLER, ROBERT W.
Exploration Consultant
R. Brewer & Co.
1210 Americana Bldg.
Houston, Texas 77002
652-3805</p> <p>CASSA, MARY ROSE
Sr. Geologist
Gulf Research & Devel. Co.
P.O. Box 37048
Houston, Texas 77236
754-9047</p> <p>COLLIER JR., H. GRADY
Consulting Geologist
1420 Saratoga Bldg.
New Orleans, Louisiana 70112
581-7602</p> <p>CRAMER, WILLARD J.
Manager New Ventures
Superior Oil Co.
P.O. Box 4552
Houston, Texas 77210
751-4132</p> <p>CREAGER, MARTHA L.
Assoc. Geologist
Marathon Oil Co.
P.O. Box 3128
Houston, Texas 77253
629-6600</p> | <p>DAVIS, DAVID R.
Geologist
Sanchez-O'Brien Oil & Gas
19 Briar Hollow Ln. #200
Houston, Texas 77027
629-9800</p> <p>DOTSEY, PETE
Geologist
Sohio Petroleum Co.
9401 Southwest Frwy.
Houston, Texas 77074
778-2594</p> <p>DRUKE, CARMEN B.
Geological Technician
Petrocorp Inc.
16800 Greenspoint Pk. #300-N
Houston, Texas 77060
999-6789</p> <p>ELICH, THOMAS C.
Geologist
T X O Production Co.
333 Clay St. #3600
Houston, Texas 77002
658-0111</p> <p>FERNS, C. KIPP
Mgr. District Exploration
A N R Production Co.
111 E. Capitol St. #400
Jackson, Mississippi 39201
961-6350</p> <p>FOWLER, JESSE C.
Geologist
Northwind Exploration
7600 W. Tidwell #212
Houston, Texas 77040
462-1642</p> <p>FRANKLIN, EDWIN H.
Geologist
Esso Exploration Inc.
P.O. Box 146
Houston, Texas 77001
973-3228</p> | <p>GIDMAN, BARRY L.
Exploration Geologist
Natomas North America Inc.
1155 Dairy Ashford #100
Houston, Texas 77079
531-2658</p> <p>HAMMOND, PATRICK A.
Geologist
Gulf Oil Expl. & Prod. Co.
P.O. Box 1635
Houston, Texas 77251
754-8888</p> <p>HAMPTON, BRET D.
Geologist
Shell Oil Co.
P.O. Box 991
Houston, Texas 77001
870-2579</p> <p>HAWKINS, MARY C.
Geophysicist
Texaco Inc.
4800 Fournace Pl. #W637
Bellaire, Texas 77401
432-2643</p> <p>HESS, JANET L.
Geologist
Consultant
2806 Quincannon
Houston, Texas 77043
460-4024</p> <p>HOGUE, MICHAEL B.
Exploration Supervisor
Superior Oil Co.
P.O. Box 4100
Woodlands, Texas 77380
363-8460</p> <p>KULHA, JOHN T.
Engineering Manager
Geotech Inc.
5900 Memorial Dr.
Houston, Texas 77007
868-3103</p> | <p>LASESKI, RUTH F.
Palynologist
Amoco Production Co. USA
P.O. Box 3092
Houston, Texas 77253
556-3386</p> <p>LEE, PHILLIP E.
Wellsite Geologist
Esso Exploration Inc.
P.O. Box 146
Houston, Texas 77001
932-5955</p> <p>LEVEY, RAYMOND A.
Exploration Geologist
Shell Oil Co.
P.O. Box 831
Houston, Texas 77001
870-2121</p> <p>MILLICAN JR., WARREN DIXON
Exploration Geologist
Elf Aquitaine Petroleum
1000 Louisiana #3800
Houston, Texas 77002
739-2188</p> <p>MOHAMED, ATEF A.
Staff Geophysicist
Gulf Oil Corp.
P.O. Box 1635
Houston, Texas 77251
754-8814</p> <p>MOORE, T. PATRICK
Sr. Geophysicist
Michel T. Halbouty Energy
5100 Westheimer #500
Houston, Texas 77056
622-1130</p> <p>MORRIS, HARRY H.
Geologist
Geol. Consulting Services
8204 Westglen
Houston, Texas 77036
785-7900</p> |
|--|---|---|--|--|

BULLETIN COMMITTEE

EDITOR

JERRY A. WATSON, Consulting Geologist, 2500 Tanglewilde, Ste. 150, Houston, Texas 77063, Ph. (713) 783-2828.

ASSOCIATE EDITOR

SUSAN CONGER-MORRIS, Gulf Oil Development and Production Co., P.O. Box 1635, Houston, Texas, Ph. (713) 754-8696.

ASSISTANT EDITORS

LAVERNE B. COBB, Gruy Petroleum Technology, Inc., 2500 Tanglewilde, Ste. 150, Houston, Texas 77063, Ph. (713) 785-9200.

DAVID A. FONTAINE, Consultant, 2801 Walnut Bend Lane, #C-26, Houston, Texas 77042, Ph. (713) 783-0020.

CYNTHIA SHAUER LANGSTAFF, Exxon Company USA, Ste. 1030, 4550 Dacoma, Houston, Texas 77092, Ph. (713) 680-5956.

DIETMAR SCHUMACHER, Pennzoil Exploration and Production Co., P.O. Box 2967, Houston, Texas 77001, Ph. (713) 546-4028.

ADVERTISING COMMITTEE

CLAUDIA P. LUDWIG, 4958 Wigton Drive, Houston, Texas 77096, Ph. (713) 723-1436.

HOUSTON GEOLOGICAL SOCIETY

The Houston Geological Society was founded in 1923 and incorporated in 1975. Its objectives are to stimulate interest and promote advancement in geology for this area, to disseminate and facilitate discussion of geological information, to enhance professional interrelationships among geologists in the area, and to aid and encourage academic training in the science of geology.

The *Bulletin* is published monthly, September through June. Subscription price for non-members within the contiguous U.S. is \$15 per year and \$30 per year for those outside the contiguous U.S. Members outside the contiguous U.S. will be billed additionally for air mail service. Single copy price is \$2.50. Subscriptions received after March 1 will be applied to the remainder of the fiscal year (ending with the June bulletin) and also to the following year. Claims for nonreceipt in the contiguous U.S. should be made within two months of the date of issue; claims from elsewhere within four months.

Communication about manuscripts and editorial matters should be directed to the Editor. Inquiries concerning advertising rates should be directed to the Advertising Chairman. Applications for membership in the Houston Geological Society may be obtained from the Society office, 6916 Ashcroft, Houston, Texas 77081.

COVER PHOTO

Old style permanent rigs dotting the landscape. *Photo Compliments of Bank of the Southwest.*

NEW ACTIVE MEMBERS (Cont'd.)

MORTON, DAVID W.
Sr. Geologist
Cities Service Oil & Gas
1980 Post Oak Blvd
Houston, Texas 77056
850-6309

PACK, DONALD D.
Geologist
Gulf Oil Expl. & Prod. Co.
P.O. Box 1635
Houston, Texas 77001
754-8709

PARMESAN, ANNE
Explorationist
Eason Oil Co.
2777 Allen Pkwy.
Houston, Texas 77019
521-1477

PAYNE, JAMES L.
Sr. Vice Pres. Land & Expl.
Santa Fe Energy Co.
1616 S. Voss Rd. #1000
Houston, Texas 77057
783-2401

PAYNE, WILLIAM R.
Geologist
Independent
P.O. Box 1170
Corpus Christi, Texas 78403
882-8631

PURCELL, MARK D.
Associate Geologist
Marathon Oil Co.
P.O. Box 312B
Houston, Texas 77253
629-6600

PYTTE, ANTHONY M.
Geologist
Gulf Oil Expl. & Prod. Co.
11111 S. Wilcrest
Houston, Texas 77236
754-5203

REINHART, WILLIAM R.
Geologist
Superior Oil Co.
P.O. Box 4100
Woodlands, Texas 77380
363-8100

ROGERS, WILLIAM Q.
Petroleum Geologist
Gulf Oil Expl. & Prod. Co.
P.O. Box 1635
Houston, Texas 77251
754-7891

RYBARCZK, SANDRA M.
Geophysicist
Shell Oil Co.
P.O. Box 527
Houston, Texas 77001
870-4507

SCHUH, MARY L.
Petroleum Geologist
Gulf Oil Corp.
P.O. Box 1635
Houston, Texas 77251
754-8751

SCHWETZ, DIANE L.
Geologist
Exxon Company USA
P.O. Box 4279
Houston, Texas 77001
591-5556

SHANNON, PATRICK J.
Supervisor Records Mngmnt.
Esso Exploration Inc.
P.O. Box 146
Houston, Texas 77001
973-3180

SHARP, JOHN L.
Associate Geologist
Marathon Oil Co.
P.O. Box 312B
Houston, Texas 77001
629-6600

SIROKY, FRANCIS X.
Geologist
Exxon Company USA
P.O. Box 2180
Houston, Texas 77001
680-5446

SPAIN, DAVID R.
Geologist
Amoco Production Co. USA
P.O. Box 3092
Houston, Texas 77253
556-2436

TAHA, MOHAMED TAHER A.
Staff Geologist
Gulf Oil Expl. & Prod. Intl.
P.O. Box 36506
Houston, Texas 77236
754-5115

UPP, G. E.
Sp. Prod. Geol. Advisor
Mobil Prod. Tex. & New Mex.
9 Greenway Plaza #2700
Houston, Texas 77046
235-1059
235-1059

VAN DYKE, JILL
Sr. Geophysicist
Gulf Oil Corp.
P.O. Box 1635
Houston, Texas 77251
754-8682

YATER, JOHN M.
Reservoir Engineer
Natural Gas Pipeline Co.
P.O. Box 283
Houston, Texas 77001
621-9030

NEW ASSOCIATE MEMBERS


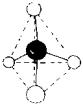
ADAMS, DENNIS ERIC
Sales Engineer
Schlumberger Offshore SVC
3100 Timmons Ln. #465
Houston, Texas 77027
840-0988





JOHNSON, ROBERT F.
Geophysical Processor
Prokop Exploration Inc.
10103 Fondren #115
Houston, Texas 77096
271-4004





ORII, KO
Assistant Manager
Wanbishi Texas Co. Inc.
1177 W. Loop S. #1660
Houston, Texas 77027
626-5340


ROBERSON, TIMOTHY M.
President
Roberson Petroleum Co.
2416 Yorktown #449
Houston, Texas 77056
627-8220

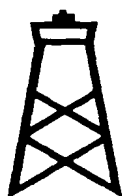
WHITE, JEFFERY S.
Project Coordinator
Core Laboratories Inc.
5295 Hollister
Houston, Texas 77040
460-9600

<p>R. P. AKKERMAN Geologist EXPLORATION Engineer CONSULTANT Review of Subsurface Data 3425 Bradford Place 668-4327 Houston, Texas 77025</p>	<p>WAYNE Z. BURKHEAD Consulting Geologist 713 Rocky River Houston, Texas 77056 Ph. 713/621-3077</p>	<p>(713) 887-1411 CHAPMAN CRONQUIST OIL & GAS CONSULTANT SAN JACINTO BLDG. SUITE 931 911 WALKER HOUSTON, TX 77008</p>
<p>BILL BAEHR CONSULTING GEOPHYSICIST BUS. (713) 271-9131 8302 BRAESVIEW HOUSTON, TEXAS 77071 RES. (713) 771-4812</p>	<p>T. WAYNE CAMPBELL PALEO-DATA, INC. CONSULTING PALEONTOLOGIST AND GEOLOGIST 6619 FLEUR De LIS DRIVE NEW ORLEANS, LOUISIANA 70124 (504) 488-3711</p>	<p>KENNETH E. DAVIS GEOLOGICAL CONSULTANT 12851 Jones Rd. Suite 108-B Houston, Texas 77070 Bus. 713/890-5421 Res. 713/469-8727</p>
<p> BALLARD ENTERPRISES JACK W. BALLARD Geophysical Consultant 6440 Hillcroft Suite 108 Houston, Texas 77081 Bus. (713) 771-3045 Res. (713) 771-0919</p>	<p>W. HENRY CARDWELL PETROLEUM GEOLOGIST 1212 MAIN ST., SUITE 743 HOUSTON, TEXAS 77002 OFF (713) 650-1660 RES (713) 782-3979</p>	<p>DONALD P. DEGEN Petroleum Geologist 6200 Savoy Suite 450 Houston Texas 77036 Area Code 713 Office 977-8828 Residence 774-9833</p>
<p>JOHN H. BEARD Senior Vice President ZENITH EXPLORATION COMPANY, INC. Exploration and Operations Consultants Telex #79-4118 - Geoscience HOU P. O. Box 79243 / Houston, Texas 77279 713-932-1011</p>	<p> ROGER E. CASEY H. LOUIS LEE San Jacinto Bldg. Suite 1245 911 Walker St. Houston, Texas 77002 (713) 222-8895</p>	<p>E. J. DICKERSON CONSULTING GEOPHYSICIST SEISMIC INTERPRETATION FIELD CREW SUPERVISION SITE SURVEYS 11550 S. Kirkwood (713) 495-5856 Stafford, Texas 77477 P.O. Drawer 1037</p>
<p> BILL BOULDEN PALEO CONTROL, INC. MICROPALAEONTOLOGY & PALEOECOLOGY 5009 CAROLINE HOUSTON, TEXAS 77004 OFFICE 520-7680 RESIDENCE 981-1408</p>	<p>JACK COLLE JACK COLLE & ASSOC. Consulting Geologists & Paleontologists 911 Walker, Suite 321 — Houston, Texas 77002 (713) 228-8221 Jack Colle (622-9555) J. G. Ward (497-7298)</p>	<p>COMPUTERIZED - NO FEE TO SELLER - PROSPECTS SOLICITED BRYSON C. DONNAN CERTIFIED GEOLOGIST PROSPECT MARKETING STAR STATE INC 6001 REIMS - 108 HOUSTON, TEXAS 77036 RESIDENCE (713) 785-9774</p>
<p>ADMINISTRATOR AAPG GROUP INSURANCE PROGRAM NEG GROUP INSURANCE PROGRAM JOHN D. BREMSTELLER REPRESENTATIVE 1013 SAN JACINTO BLDG. HOUSTON TX 77002 TELEPHONES OFFICE 751-0254 RES 774-3188</p>	<p> W. F. COOKE, JR. PRESIDENT ACCO OIL & GAS CO. One Briar Dale Ct. Houston, Texas 77027 (713) 622-7070</p>	<p>Domestic Foreign DAVID L. DUNN Consulting Geologist and Paleontologist Biostratigraphy Paleocology 6103 Old Oak Circle Sugar Land, Texas 77479 Tel (713) 499-3866</p>
<p><i>Martha Lou Broussard</i> Geologist Background Studies — Mineral Resources Technical Publications 665-4428</p>	<p><i>Jack W. Craig</i> CONSULTING GEOLOGIST OFFICE (713) 652-4960 RESIDENCE 623-2826 814 FIRST CITY NATIONAL BANK BLDG HOUSTON, TEXAS 77002</p>	<p>EVARD P. ELLISON GEOLOGIST TELEPHONE 652-3816 556 THE MAIN BUILDING 1212 MAIN STREET HOUSTON TEXAS 77002</p>
<p>RALPH W. BAIRD Seismic Stratigraphy Baird Petrophysical Group, Inc. 3300 Walnut Bend Houston, Texas 77042 (713) 975-8088 Telex 79-4577</p>	<p> WALLACE G. DOW DOW GEOCHEMICAL SERVICES Post Office Box 7568 The Woodlands, Texas 77387 (713) 363-2176</p>	<p>JOHN W. FRANKLIN LOG ANALYST & COMPLETION SPECIALIST 9235 Rockhurst Houston, TX 77080 (713) 895-7120 (512) 278-4068</p>

<p>PAUL FARREN Geophysical Consultant</p> <p>Geodata Building 667-3317 5603 S. Rice Ave. (77081)</p>	<p>BILL KALIL</p>  <p>INDEPENDENT PETROLEUM GEOLOGIST</p> <p>P. O. BOX 1781 MIDLAND, TEXAS 79702 (915) 683-0880</p>	<p>ROBERT H. MAYSE SENIOR VICE PRESIDENT</p> <p>SUITE 121 AMERICANA BLDG 811 DALLAS ST P. O. BOX 1188 HOUSTON, TEXAS 77001 713/654 6684</p>
<p>STEWART H. FOLK CERTIFIED PROFESSIONAL GEOLOGIST</p> <p>2500 FONOREN RD. SUITE 208 HOUSTON, TEXAS 77063 713-977-8280</p> <p>11907 LONGLEAF HOUSTON, TEXAS 77024 713-781-2336</p>	<p>BOBBY G. KERR GEOPHYSICIST GEOLOGIST</p> <p>KERR GEOLOGICAL CO. 2600 S. GESSNER, SUITE 230 HOUSTON, TEXAS 77053</p> <p>BUS. (713) 977-9664 RES. (713) 499-4803</p>	<p>W. B. McCARTER & C. E. McCARTER PETROLEUM GEOLOGISTS</p> <p>2822 HAZARD STREET HOUSTON, TEXAS 77019 (713) 523-5739 (713) 529-1881</p> <p>P. O. BOX 322 FOLKSTON, GEORGIA 31527</p>
<p>H. J. GRUY CHAIRMAN AND CHIEF EXECUTIVE OFFICER</p> <p>H. J. GRUY AND ASSOCIATES, INC. GRUY MANAGEMENT SERVICE CO. 2500 TANGLEWILDE SUITE 150 GRUY PETROLEUM TECHNOLOGY, INC. (713) 785-9200 HOUSTON, TEXAS 77083</p>	<p>HOWARD W. KIATTA <i>Petroleum Geologist</i></p> <p>1427 BANK OF THE SOUTHWEST BUILDING HOUSTON, TEXAS 77002</p> <p>Office (713) 951-9090 RES. (713) 680-0179</p>	<p>A. N. McDOWELL EXPLORATION CONSULTANT</p> <p>OFFICE (713) 467-7436 10633 SHADOW WOOD DRIVE RESIDENCE HOUSTON, TEXAS 77043 (713) 468-6521</p>
 <p>MICHEL T. HALBOUTY GEOLOGIST AND PETROLEUM ENGINEER CHAIRMAN OF THE BOARD</p> <p>MICHEL T. HALBOUTY ENERGY CO THE HALBOUTY CENTER 5100 WESTHEIMER ROAD HOUSTON, TEXAS 77056</p> <p>TEL: (713) 622-1130 TXW 19101 681-4599</p>	 <p>WILLIAM A. LAMONT GEOPHYSICAL CONSULTANT</p> <p>SUITE 222 4660 BEECHNUT HOUSTON, TEXAS 77096</p> <p>OFF. 713-661-7468 RES. 713-668-0067</p>	<p>CHUCK McGAUGHEY FORMATECH <i>Complete Mud Logging Pressure Detection Automatic Gas Detection</i></p> <p>Houston Tel: 713/354-5733 Res: 713/358-1402 P. O. Box 893 Porter, Texas 77365</p>
<p>JOHN E. HANKEY PRESIDENT</p> <p>HANKEY OIL COMPANY 850 FIRST WESTERN BUILDING 1800 MAIN STREET HOUSTON, TEXAS 77008 (713) 858-1996</p>	<p>Robert G. Louick Consulting Geologist Certified Petroleum Geologist No. 813</p> <p>240 The Main Bldg 1301 Pere Marquette Bldg. 1212 Main St 150 Baronne St. Houston, TX 77002 New Orleans, LA 70112 (713) 654-8062 (504) 524-1919</p>	<p>FRANK S. MILLARD PETROPHYSICAL SERVICES INC. WELL LOG INTERPRETATIONS-SEMINARS</p> <p>10811 HOLLY SPRINGS HOUSTON, TEXAS 77048 713/782-8033</p>
<p><i>Lane E. Horstmann, Sr.</i> <i>Geological Consultant</i></p> <p>9039 KATY FREEWAY BUILDING 200, SUITE 219 HOUSTON, TEXAS 77024</p> <p>(713) 465-4134 S.I.P.E.S. MEMBER PROFESSIONAL ENGINEER</p>	<p><i>Claudia P. Ludwig</i> EXPLORATION GEOLOGIST</p> <p>4958 WIGTON DRIVE HOUSTON, TEXAS 77096</p> <p>713/723-1436</p>	<p>R. B. MITCHELL Geologist</p> <p>2301 First City National Bank Bldg. Houston, Texas 77002 652-2192</p>
 <p>LARRY L. JONES PRESIDENT</p> <p>11767 KATY FRWY. SUITE 990 HOUSTON, TEXAS 77079 713/493-1022</p> <p>SPARTAN PETROLEUM CORPORATION</p>	<p>GEORGE N. MAY GEORGE N. MAY and ASSOCIATES Consulting Geologists and Paleontologists P. O. Box 51858 Oil Center Station Lafayette, Louisiana 70505 (318) 234-3379</p>	<p>EVELYN WILIE MOODY</p> <p>CONSULTING GEOLOGIST OIL AND GAS EXPLORATION SUBSURFACE STUDIES TECHNICAL PAPERS</p> <p>956 THE MAIN BLDG. OFF. 713-654-0072 1212 MAIN ST. RES. 713-789-5999 HOUSTON, TEXAS 77002 CERTIFIED #3540</p>
<p>James W. Fowler Geologist</p> <p>17150 Butte Creek Suite 154 Houston, Texas 77090</p> <p>Off. 713/580-1900 Res. 713/444-4289</p>	<p>Domestic and Foreign Stratigraphy Paleogeology Training</p> <p>James L. Lamb Consulting Micropaleontologist (Foraminifera)</p> <p>Tel Houston (713) 789-9607 Livingston (713) 967-8410</p> <p>Apt 54 • 7600 High Meadow Houston Texas 77063</p>	<p>Clyde E. Harrison CERTIFIED PETROLEUM GEOLOGIST</p> <p>SUITE 780 ONE ALLEN CENTER HOUSTON, TEXAS 77002 (713) 658-8115</p>

<p>DR. NORMAN S. NEIDELL <i>Executive Vice President</i></p> <p>ZENITH EXPLORATION COMPANY, INC. Exploration and Operations Consultants Telex #79-4118 - Geoscience HOU P. O. Box 79243 / Houston, Texas 77279 Bus. (713) 932-1011 Res. (713) 464-7558</p>	<p>LEO PUGH</p> <p>Gulf Coast Geo Data Corp. Seismic — Gravity Data 1106 AMERICANA BLDG. Houston, Texas 77002 (713) 652-3879</p>	<p>713-757-0274</p> <p><i>Cecil R. Rives</i> PETROLEUM GEOLOGIST</p> <p>SUITE 1313 THE MAIN BUILDING 1212 MAIN STREET HOUSTON, TEXAS 77002</p>
<p>JOHN H. NEWCOMB</p> <p>Energetics, Inc. <i>Gulf Coast Exploration</i></p> <p>1010 LAMAR SUITE 410 Houston, Texas 77002 Ph (713) 759-0306</p>	<p>JOSEPH G. PUTMAN, III</p> <p><i>Oil & Gas Interests</i></p> <p>16002 Kempton Park 370-2241 Spring, Texas 77373 658-0601</p>	<p>JAMES W. ROACH PETROLEUM GEOLOGIST</p> <p>PRESIDENT JWR EXPLORATION, INC. 2929 BRIARPARK, SUITE 314 HOUSTON, TEXAS 77042</p> <p>OFF 713-784-4080 HOME 782-9704</p>
<p>I. K. NICHOLS PETROLEUM GEOLOGIST</p> <p>41 STILL FOREST DRIVE HOUSTON, TEXAS 77024</p> <p>782-4970</p>	<p><i>C. M. Quigley, Jr.</i> <i>Geologist - Paleontologist</i> <i>Office and Wellsite Services</i></p> <p>31 Camelback Willis Phone No. Conroe, Texas 77304 (409) 856-4220</p>	<p>John Ruggles & Co.</p> <p>JOHN A. RUGGLES President</p> <p>10405 Town & Country Way Suite 100 Houston, Texas 77024 713 461-3060</p> <p>Oil & Gas Division </p>
<p>1-713-464-6730 1-512-883-8555</p> <p>C. R. "Chuck" NOLL, JR. Exploration Manager</p> <p>Houston Office Frio Exploration Company 9575 Katy Freeway, Suite 200 Houston, Texas 77024</p> <p>FRIO</p>	<p>JAMES A. RAGSDALE <i>Petroleum Geologist</i></p> <p>2919 ROCKYRIDGE HOUSTON, TEXAS 77063</p> <p>(713) 780-4393</p>	<p>WILLIAM E. RUSS Exploration Geologist</p> <p>RAINBOW MINERALS, INC. THE MAIN BUILDING 1212 MAIN STREET, SUITE 465 HOUSTON, TEXAS 77002 OFFICE (713) 658-9167 RES (713) 686-3113</p>
<p>ELWIN M. PEACOCK CONSULTING GEOPHYSICIST</p> <p>SUITE 1414 FIRST CITY TOWER 1001 FANNIN HOUSTON TEXAS 77002-6708</p> <p>713 652 5014</p>	<p>DAVID W. RAPP CONSULTING GEOLOGIST</p> <p>9219 Katy Fwy • Suite 292 Houston, Texas 77024</p> <p>OFFICE (713) 467-6221 RESIDENCE (713) 468-2747</p>	<p>B.C. ST. MARTIN, JR. <i>Petroleum Geologist</i></p> <p>7128 FOUR RIVERS ROAD BOULDER, COLORADO 80301 303/530-2750</p> <p>BESAMA CORPORATION PETROLEUM EXPLORATION TEXAS - LOUISIANA</p> <p>MAILING ADDRESS P.O. BOX 4617 BOULDER, COLO. 80306</p>
<p>The D & S Group</p> <p>D & S Petroleum Consultants, Inc. 4200 Westheimer, Houston, Texas 77027</p> <p>D. RAYMOND PERRY, Jr. Petroleum Engineer</p> <p>Telephone (713) 629-7770 Residence (713) 669-0715</p> 	<p>RAYMOND D. REYNOLDS Geologist</p> <p>P.O. BOX 6665 HUNTSVILLE, TEXAS</p> <p>409/295-5506 1314 TENTH STREET</p>	 <p>HERSHEL E. SALE CERTIFIED PETROLEUM GEOLOGIST</p> <p>9896 BISSONNET SUITE 100 HOUSTON TEXAS 77036</p> <p>BUS 713-771-3459 RES 713-774-3494</p>
<p>RICHARD L. PORTER Petroleum Geologist & Exploration Consultant</p> <p>8821 McAVOY DR HOUSTON TEXAS 77074</p> <p>(713) 774-7682</p>	<p><i>Ben Buongiorno</i> GOOD DAY ENERGY, INC.</p> <p>SUITE 432 THE MAIN BLDG. 1212 MAIN ST. HOUSTON, TEXAS 77002</p> <p>(713) 658-8487 OFFICE (713) 494-1701 RES.</p>	<p>Geologist Environmentalist Energy Consultant Oil</p> <p>MARTIN M. SHEETS 1973 W. Gray, Suite 4 Houston, Texas 77019</p> <p>(713) 523-1975</p> <p>Waste Disposal Subsidence Active Surface Faulting</p>
<p>GEOPET CONSULTING PETROLEUM ENGINEERING</p> <p>ARVEL G. MARTIN PRESIDENT</p> <p>8552 Katy Freeway, Suite 252 Houston, Texas 77024 • 713/465-0123</p>	 <p>J. Rose & Associates, Inc. <i>EARTH RESOURCES TECHNOLOGY</i></p> <p>JIM E. ROSE</p> <p>Main office: Suite 214 1730 Nasa Rd. 1 Houston, Texas 77058 713.333.2650</p>	<p>M. CLAY RUSHING & ASSOCIATES <i>Petroleum Geologists</i> (713) 850-8720</p> <p>M. CLAY RUSHING PRESIDENT</p> <p>4212 San Felipe, Suite 188 Houston, TX. 77027</p>

<p>OFF 713-832-0122 RES 713-783-9439</p> <p>HARRY H. SISSON CONSULTING GEOPHYSICIST</p> <p>MEMBER AAPG SEG IAMG</p> <p>10405 TOWN & COUNTRY WAY SUITE 100 HOUSTON, TEXAS 77024</p>	 <p>Swinehart Consulting <i>Geologist - Geophysicists</i></p> <p>DAVID D. SWINEHART</p> <p>5322 W. BELLFORT SUITE 208 HOUSTON, TEXAS 77035</p> <p>OFFICE (713) 723-9983 HOME (713) 729-0351</p>	<p>J. C. WALTER, JR. Geologist and Petroleum Engineer</p> <p>240 The Main Building 1212 Main Street Houston, Texas 77002</p> <p>659-1221</p>
<p><i>Fred L. Smith, Jr.</i> CONSULTING GEOLOGIST</p> <p>THE PARK IN HOUSTON CENTER 1221 LAMAR - SUITE 153B HOUSTON, TEXAS 77010</p> <p>OFFICE (713) 659-5757 RES 468-7300</p>	<p>W. L. TIDWELL CERTIFIED PETROLEUM GEOLOGIST</p> <p>P. O. BOX 36464 SUITE 450 • 8200 SAVOY DRIVE HOUSTON, TEXAS 77036</p> <p>713-977-8625</p>	 <p>PRAIRIE PRODUCING COMPANY</p> <p>GEORGE F. WATFORD Chief Executive Officer</p> <p>2200 HOUSTON NATURAL GAS BUILDING HOUSTON, TEXAS 77002 713-658-8413</p>
<p>ROY O. SMITH & ASSOCIATES, INC EXPLORATION CONSULTANTS</p> <p>ROY O SMITH 4660 BEECHNUT, SUITE 222 (713) 861-7468 HOUSTON, TEXAS 77098</p>	<p>CHARLES E. TROWBRIDGE CONSULTING GEOLOGIST</p> <p>1221 LAMAR, SUITE 1540 HOUSTON, TEXAS 77010</p> <p>OFFICE (713) 658-5038 RESIDENCE 468-3161</p>	<p>JERRY A. WATSON CONSULTING GEOLOGIST</p> <p>2500 TANGLEWILDE SUITE 150 HOUSTON, TEXAS 77063</p> <p>BUS. (713) 783-2828 RES. (713) 496-7526</p>
<p>I J BONNIE SNYDER</p> <p>811 DALLAS, SUITE 1431 • HOUSTON, TEXAS 77002 • 713/652-2960</p>	 <p>LOYD TUTTLE PALEO CONTROL, INC. MICROPALAEONTOLOGY & PALEOECOLOGY</p> <p>5009 CAROLINE HOUSTON, TEXAS 77004</p> <p>RESIDENCE 713-466-7922 OFFICE 713-520-7680</p>	<p>JAMES A. WHEELER <i>Petroleum Geologist</i></p> <p>800 Gessner, Suite 805 Houston, Texas 77024 (713) 465-0144</p>
<p>CRAMON STANTON PRESIDENT</p> <p>CRAMON STANTON, INC. 5606 BERMUDA DUNES DRIVE HOUSTON, TEXAS 77069 444-0898 AREA 713</p> <p>OIL & GAS-MINERAL RESOURCES EXPLORATION & DEVELOPMENT DOMESTIC & FOREIGN</p>	<p>GENE VAN DYKE</p> <p>PRESIDENT VAN DYKE ENERGY COMPANY</p> <p>ONE GREENWAY PLAZA HOUSTON, TEXAS 77066 (713) 877-8844 TELEX: 792066</p>	<p>DALE WILKINS FORMATECH <i>Complete Mud Logging Pressure Detection Automatic Gas Detection</i></p> <p>Houston Tel: 713/354-5733 Res: 713/359-1838 P. O. Box 893 Porter, Texas 77365</p>
<p>S. BROOKS STEWART Consulting Geophysicist</p> <p>1415 First City Tower Houston, Texas 77002-6708</p> <p>OFFICE 713-652-5016</p>	<p>MERLIN J. VERRET <i>President</i></p> <p>Delta Energy Resources, Inc 3002 Country Club Road Lake Charles, Louisiana 70601 (318) 477-1477</p>	<p>AUGUSTUS O. WILSON SAKER GEOLOGICAL SERVICES</p> <p>CARBONATE GEOLOGY 2425 UNDERWOOD #159 FIELD STUDIES HOUSTON, TEXAS 77030 REGIONAL 713-668-0534</p>
<p>E. H. STORK, JR. <i>Consulting Paleontologist and Geologist Biostratigraphy - Paleocology Geologic Interpretations</i></p> <p>1221 Lamar, Suite 1534 The Park - Houston Center Houston, Texas 77010</p> <p>Off: (713) 652-5026 Res: (713) 466-9064</p>	<p>HUGH G. WALK CONSULTING PALEONTOLOGIST</p> <p>7806 TWIN HILLS HOUSTON, TEXAS 77071</p> <p>(713) 774-0745</p>	<p>OWEN B. WOOD GEOLOGIST</p> <p>3743 ABERDEEN WAY HOUSTON, TEXAS 77023 (713) 668-1175</p>



Brown and McKenzie

Oil & Gas Exploration

9301 Southwest Freeway, Suite 255
Houston, Texas 77074
713/271-7700

C.F. Brown, Jr.
Pat Ellis
Jack Logan
Billy J. Neal

Michael McKenzie
Joel Paseman
Mark Brown
Steve McKenzie
Kevin Logan



**announces its innovative, low-cost
SEISMIC MODELLING SYSTEM
for the IBM Personal Computer**

the first of the GEOSIM Family of software
for Oil and Gas and Minerals Exploration

**5619 Morningside Drive • Houston, Texas 77005
Telephone (713) 523-9173**

Inquiries Invited

Demonstrations Arranged



GEOMAP COMPANY

PEPPARD & ASSOCIATES
A Division of **GEOMAP COMPANY**

● **GEOLOGIC MAPPING SERVICES**

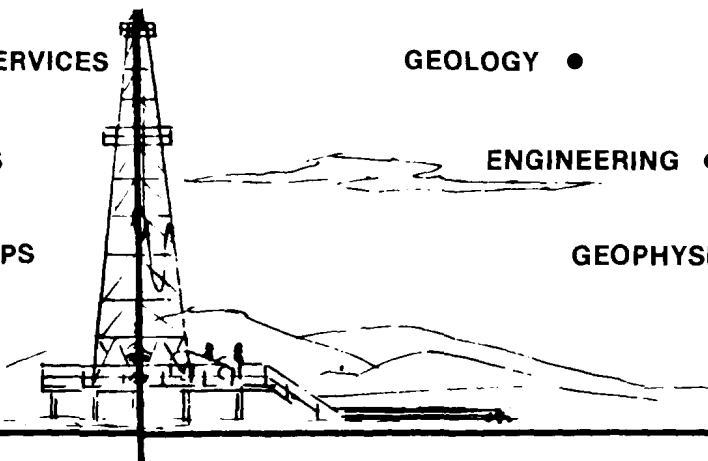
GEOLOGY ●

● **WELL SPOTTING SERVICES**

ENGINEERING ●

● **REFERENCE MAPS & BASE MAPS**

GEOPHYSICS ●



PLANO
(214) 578-0571

DENVER
(303) 893-5858

HOUSTON
(713) 972-1018

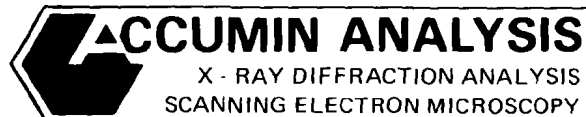
MIDLAND
(915) 682-3787

OKLA. CITY
(405) 232-6155

ATWATER CONSULTANTS, LTD. GEOLOGISTS & PETROLEUM ENGINEERS

318 CAMP STREET
NEW ORLEANS, LA. 70130

(504) 581-6527



X - RAY DIFFRACTION ANALYSIS
SCANNING ELECTRON MICROSCOPY

**IMPROVE PRODUCTION
THROUGH FORMATION ANALYSIS**

ACCUMIN ANALYSIS, INC.
(713) 931-1131
323 Hollyvale Dr. • Houston, Texas 77060

Over A Quarter Century Of Dependable Service



CORPUS CHRISTI
884-0683
HEBBRONVILLE
527-4051
VICTORIA
573-4202

SAN ANTONIO
824-6081
COTULLA
876-5217
CARRIZO SPRINGS
876-5217

"Core Analysis"
"Water Analysis"



TELEDYNE EXPLORATION

A Leader in
Geophysical Technology

- /// Land Surveys
- /// Data Processing
- /// Marine Surveys
- /// Non-exclusive Data
- /// Equipment Manufacturing

HOUSTON:
5825 Chimney Rock Rd. • Box 36269
Houston, TX 77036 • (713) 666-2561

OFFICES:
Midland • New Orleans • Denver
Calgary • Caracas

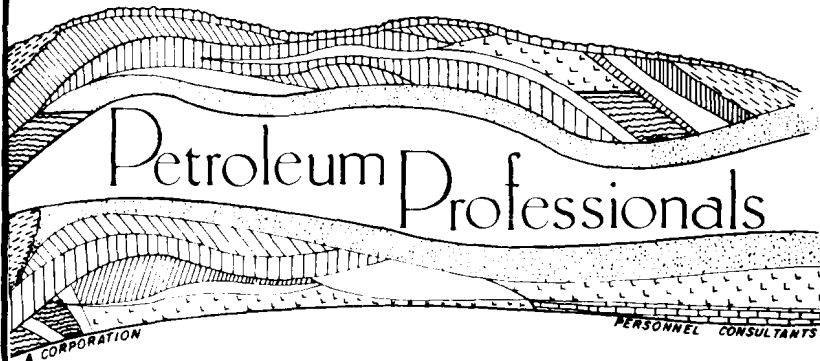
RELIABLE, COMPREHENSIVE DATA FROM A SINGLE SOURCE.

Drilling reports • Completion data • Logs
• Production data • Lease reports • Maps •
Historical well files • Current ownership
data and maps • Statistical services • Data
management and software • Photogeologic-
geomorphic mapping • Technical data serv-
ices • Regional, national and international
energy periodicals

PETROLEUM INFORMATION INFORMATION SPECIALISTS TO THE ENERGY INDUSTRY.

Houston Sales Office	Corporate Headquarters
4150 Westheimer Road	P.O. Box 2612
P.O. Box 1702 77251	Denver, CO 80201
713/961-3300	303/740-7100

Petroleum Information Corporation
A Subsidiary of A.C. Nielsen Company



**SPECIALISTS IN EXPLORATION
PERSONNEL PLACEMENT**

**A CONFIDENTIAL AND PERSONALIZED
SERVICE TO THE OIL INDUSTRY**

713/961-9970

**1800 ST. JAMES PLACE, SUITE 303
HOUSTON, TEXAS 77056**

EXPLORING THE GULF COAST



PEL-TEX OIL COMPANY, INC.

SUITE: 5000 INTERFIRST PLAZA
1100 LOUISIANA
HOUSTON, TEXAS 77002
713-658-8284



*Providing
Reliable Data
for 50 years!*

- Core Analysis
- Special Core Analysis
- Engineering and Geological Consulting
- Geological Services
- Unmanned Drilling Monitoring (AutologgerSM)
- Reservoir Fluid Analysis
- Petroleum and Petrochemical Laboratory Services
- Petrographic Services
- Source-Rock Evaluation

**Core Laboratories, Inc., 5295 Hollister Road
Houston, TX 77040 (713) 460-9600**

National Petrographic Service

Specializing in Quality Thin Sections

• **Rush and Super Rush Service** •

5933 Bellaire Blvd., Suite 112

Houston, Texas 77081

(713) 661-1884



W. L. Tidwell & Associates Incorporated

GEOLOGICAL & ENGINEERING SERVICES

Suite 450 • Colonial Savings Tower • 6200 Savoy Drive

Houston, Texas 77036

713-977-8625

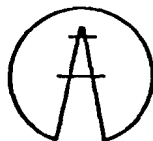
THE STONE PETROLEUM CORP.

GULF COAST OIL & GAS EXPLORATION

3801 KIRBY DRIVE, SUITE 544

HOUSTON, TEXAS 77098

KARL H. ARLETH



B. W. KIMMEY

A. G. RICHARD

(713) 526-8734

SIERRA PRODUCTION COMPANY

8580 Katy Freeway, Suite 232

Houston, Texas 77024

(713) 932-9700

Byron F. Dyer



International Biostratigraphers Incorporated

PALEONTOLOGY
PALYNOLOGY
NANNOFOSSILS

PALEOECOLOGY
SOURCE ROCKS
THIN SECTIONS

W W FAIRCHILD

C R PICKETT

5933 BELLAIRE BOULEVARD • HOUSTON, TEXAS 77081 • (713) 665-8686



VIZILOG, INC.

- Log Analysis • Formation Evaluation
- Wellsite Consulting • Training Seminars
- Dipmeter Computation • Fracture Identification
- Digitization

3724 FM 1960 West, Suite 306F
Houston, Texas 77068

Phone (713) 444-5039 Telex 765613



Western Geophysical

Litton

10,001 Richmond Avenue, P.O. Box 2469, Houston, Texas 77252
Telephone (713) 789-9600 Cable WESGECO Telex 762406

THE ANALYSTS

Schlumberger

Measurements While Drilling (MWD)

Total Concept Well Logging

Conventional Well Logging

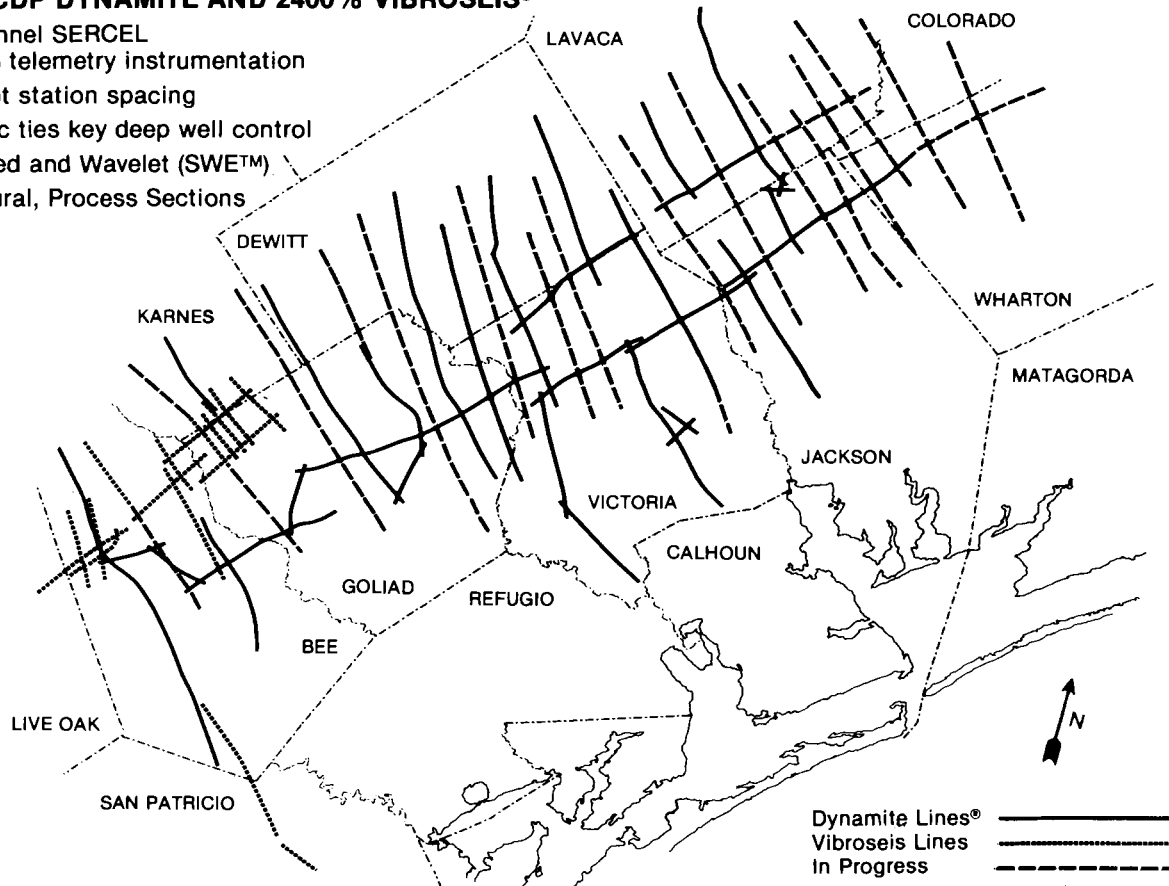
North American Operations
4120-D Directors Row, Houston, Texas 77092-8797
Telephone: (713) 686-5516 • Telex: 76-2683

SOUTH TEXAS

Non-Exclusive, High Resolution Seismic Data

DOWN DIP WILCOX TREND 1200% CDP DYNAMITE AND 2400% VIBROSEIS®

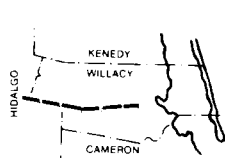
- 96 channel SERCEL SN 348 telemetry instrumentation
- 220-foot station spacing
- Seismic ties key deep well control
- Migrated and Wavelet (SWE™)
- Structural, Process Sections



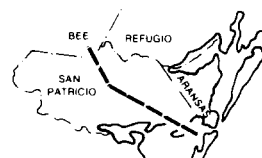
VICKSBURG AND FRIO TRENDS 2400% CDP VIBROSEIS®

- 96 channel Geosource MDS-10 instrumentation
- 220-foot station spacing

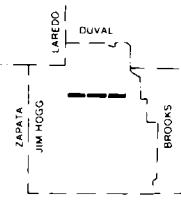
VIBROSEIS® is a registered trademark and a registered servicemark of Conoco, Inc.



SPEC 1



SPEC 2



SPEC 3

Data acquisition by GeoQuest Exploration, Inc. • Data processing by GeoQuest International, Inc.

For information contact Chuck Andrews, Joe Turner or Marvin Taylor.



GEOQUEST DATA SERVICES, INC.

4605 Post Oak Place, Suite 130, Houston, Texas 77027
(713) 627-7180 Telex 910 881 4408



FORNEY OIL CORPORATION

5599 SAN FELIPE • SUITE 1200 • HOUSTON, TEXAS 77056 • (713) 621-0033

INTEGRATED EXPLORATION SERVICES, INC.

Jack M. Balderas, Jr. Nelson B. Yoder

CONSULTING GEOLOGISTS

**Bio-Lithologic Analysis
of
Well Cuttings and Cores
specializing in carbonate petrography**

3903 Spur 501 (713) 471-8406
(Old Hwy 146) LaPorte, Texas 77571

OIL PROPERTIES

Cash for Producing Oil & Gas Interests
i.e. Royalties, Working Interest, Back-Ins.
Any size considered. Contact Robert Kent
Texon Energy Corp. 713/658-9586.

T E N R O C

TENROC
EXPLORATION
SYSTEMS

A division of
Petroleum Information
Corporation

*Tenroc offers a powerful
computerized geological
database and software
system for the Gulf
Coast area — onshore
and offshore.*

Tenroc provides:

- Correlated Geology Tops
- Sand Counts
- Hydrocarbon Picks
- Mud Run Data
- Pressure Data
- Fault Data

Data are available in **map sets, printed reports, on computer tape or via computer timesharing.**

For more information and a FREE Tenroc Gulf Coast Cenozoic Stratigraphic Chart call:

713 342-8642 or write:
TENROC
PO. Box 569
Needville, TX 77461

Petroleum Information Corporation
A Subsidiary of A.C. Nielsen Company

Santa Fe Energy Company

A Santa Fe Industries Company

Executive Offices
Suite 1000
1616 South Voss Road
Houston, Texas 77057-2696
(713) 783-2401

Gulf Coast Division
1616 South Voss,
Suite 400
Houston, Texas 77057-2696
(713) 783-9561

Mid-Continent District
Suite 500
Williams Center Tower 1
One West Third Street
Tulsa, Oklahoma 74103
(918) 582-6944

Permian Basin District
500 W. Ohio
Midland, Texas 79701
(915) 687-3551

Rocky Mountain District
Security Life Building
Suite 2600
Denver, Colorado 80202
(303) 825-5101

RESERVOIRS

INC.

COMPLETE RESERVOIR ANALYSIS

- Geological, Petrophysical and Engineering Studies
- Single Well, Field and Regional Studies
- Special Core Analysis

Take the scientific approach to your next completion

Houston Division
1151-C Brittmore Road
Houston, Texas 77043
(713) 932-7183

Denver Division
1827 Grant Street
Denver, Colorado 80203
(303) 830-1986



Pogo Producing Company

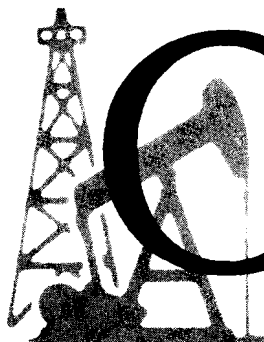
P. O. BOX 61289
600 Travis, Suite 6600
Houston, Texas 77002
651-4300

Mid-Continent Division
900 Mid-America Tower
20 N. Broadway Avenue
Oklahoma City, Ok 73102
(405) 236-4192

Rocky Mountain Division
P.O. Box 2211
633-17th Street, Suite 1100
Denver Colorado 80201
(303) 572-3739

Southern Region
Onshore & Offshore
P. O. Box 2504
2919 Allen Parkway
Houston, Texas 77252
(713) 630-4700

Western Division
P. O. Box 10340
300 Midland Towers
Midland, Texas 79702
(915) 682-6822



OMNI

Petroleum Services, Inc.

* * CORE ANALYSIS * *

- 24 hour service
- over 40 years of collective core analysis experience
- prompt, personalized service

681-6666

2501 Central Parkway, Suite C-13, Houston, Tx. 77092

Exclusively

Geologists, Geophysists, Engineers

952-9555

PARTNERS

**Mark Cornelius
Bruce Kirby**

**Tom Peterson
Bill Sonne**



**YESTERDAY, TODAY and TOMMORROW
(Since 1977)**

11111 Wilcrest Green, Suite 200

Houston, Tx. 77042
Resumes sent with consent

Houston Geological Society

6916 ASHCROFT
HOUSTON, TEXAS 77081

BULK RATE
U. S. POSTAGE
PAID
Houston, Texas
Permit No. 8254

January CALENDAR of EVENTS **1984**

SUNDAY	MONDAY	TUESDAY	WEDNESDAY	THURSDAY	FRIDAY	SATURDAY
1	2	3	4	5	6	7
8	9 DINNER MEETING CHAPMAN CRONQUIST WESTIN GALLERIA	10 CRUDE CLUB WHITEHORSE CELLAR 11:30 AM 878-7167	11	12	13	14
15	16	17	18 HGS INTL DINNER MEETING ROBERT L. MABY WESTIN GALERIA 19 AWG DINNER MEETING QUALITY INN GREENWAY PLAZA	19	20	21
22	23	24 SPWLA DOWNTOWN 780-4545 NORTHSIDE 972-1749 WESTSIDE 972-6972	25 LUNCHEON MEETING JOHN IBALSLEY IMERIDIEN HOTEL	26	27 HGS CONTINUING EDUCATION FOR CARBONATE PETROLEUM RESERVOIRS	28
29	30	31				