

PRODUCT OVERVIEW  
2016/2017



THE ART OF SOUND

**CANTON**<sup>®</sup>  
German loudspeaker tradition

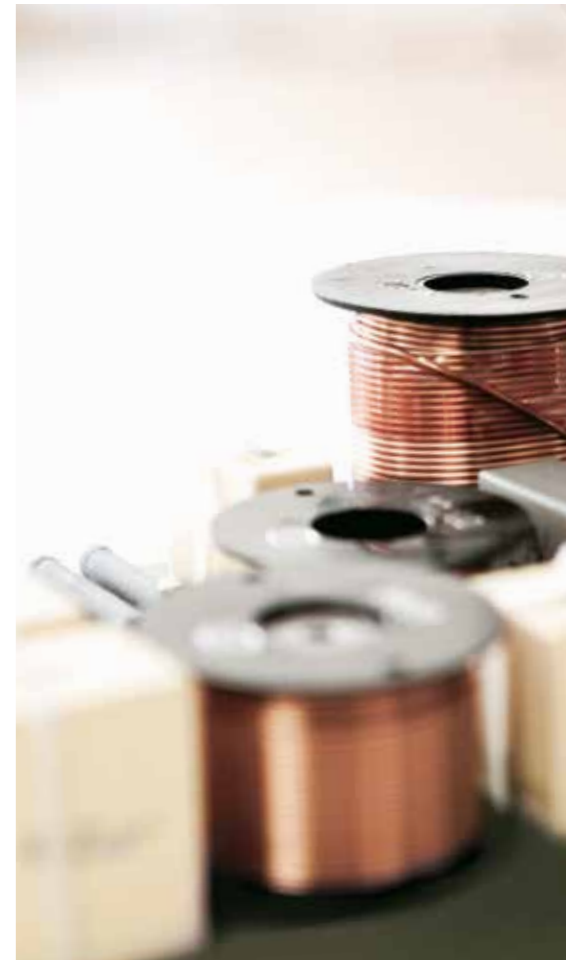
## OUR PRODUCTS

All of the speakers come out of our own development center in Weilrod, near Frankfurt, Germany. Nothing but top quality components go into our products, and we carry out all quality control in Germany. And our commitment is worth it: we have received awards for many of our speakers due to their sound quality and design.



## OUR SERVICE

Every one of our speakers undergoes strict quality control. But, if you still encounter issues, our service department will provide rapid support. Because we put such a premium on long-lasting products, we will gladly repair any model at any time. No matter how old it is.



## THE ART OF SOUND

The art of finding the best sound for every ear, need and budget. For over 40 years, we have been combining innovative technologies, premium quality and an extraordinary range of speaker models and designs – to produce unique and individualized sound qualities.







## A LONG TRADITION...

Our founder, Günther Seitz, has been leading Canton for more than 40 years, always with the goal of creating products that help many people experience good music.

One secret to Canton's success is that the company remains in familiar hands: the founder's son and managing partner, Achim Seitz, will take the company's strategy into the next generation.

## ...CREATING THE SOUND OF TOMORROW

Frank Göbl and his team fine-tune acoustic perfection using state-of-the-art technology and top-quality materials in the company's development center. From the first computer simulation to the final finishing coat: we are always looking for ways to optimize our products.

One example is our ceramic-tweeter-systems and the new titanium speaker cone membranes. Another technical innovation is the next generation wave surround, which allows for more lift and undistorted sound even at the threshold for many of our speakers.



## EXPERIENCE CANTON

THE ART OF SOUND, as we see it, is the art of perfectly harmonizing tradition with innovation. The only way to develop speakers with personality is to put a lot of personal dedication into them. Get to know us.



*"I know that every speaker I check will make someone happy."*

Verena Paditz, part of Canton's Manufacturing and Quality Control since 2008.



*"The real art lies in constant repetition. Quality – again and again. Being part of that makes me very proud."*

Sven Hartnauer, at Canton since 2001, responsible for the manufacturing of the Reference series.



*"As a younger member of the Canton team, I learn everything about speakers from development to sales. I really enjoy the mix of tradition and innovation."*

Emre Altinay, apprentice at Canton since 2014.



<b>Karat Jubilee 3</b>	
Engineering Principle	4-way, bass reflex system
Nom. /Music power handling	280/440 watts
SPL (1 watt/1m)	88 dB
Frequency response	20 ... 40,000 Hz
Crossover frequency	130/500/3,100 Hz
W x H x D	13.2" x 43.3" x 17.7"
Weight	46 kg
Color	<input type="radio"/> <input checked="" type="radio"/> HG

# KARAT

Our KARAT series has set new acoustic standards for more than three decades. In honor of its 35th anniversary, the special edition KARAT Jubilee 3 will be available in a limited run of only 100 pairs. Another milestone for the KARAT series, this limited edition is ideal for all music lovers who prefer something special and look for the latest technology paired with a unique design.

- Limited special edition
- Wave-surround technology
- High-quality connection terminals
- Ceramic tweeter system
- 4-way crossover
- Diamond-cut aluminum rings
- Titanium woofers and midrange speakers
- Reference internal cabling
- Exclusive cabinet



White "semi-gloss finish"  
Black fabric grill



Black lacquer "high gloss"  
Black fabric grill





Vento 896 DC	Vento 886 DC	Vento 876 DC	Vento 836	Vento 826
W x H x D 11.2" x 43.3" x 14.6"	W x H x D 9.8" x 40.4" x 13"	W x H x D 8.9" x 37.4" x 11.8"	W x H x D 8.7" x 14.2" x 11.8"	W x H x D 7.7" x 11.8" x 10.6"
Color HG HG HG	Color HG HG HG	Color HG HG	Color HG HG	Color HG HG



Vento 866 Center	Vento 816 OnWall	Subwoofer (recommendation) SUB 1500 R
W x H x D 23.6" x 7.9" x 13.8"	W x H x D 7.7" x 11.8" x 3.5"	W x H x D 15" x 19.9" x 18.1"
Color HG HG	Color HG HG	Color HG HG

# VENTO

The new titanium speaker cone membranes together with the ceramic tweeter system optimized for omni-directional performance and neutrality: a perfect symbiosis for an extraordinary sound experience. With re-designed cabinets and substantially more internal volume, every Vento speaker stands for absolute perfection. The downfire bass reflex vent enhances the bass reproduction of the three standing models.

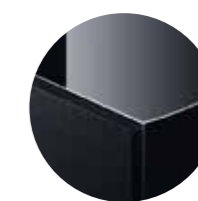
- Ceramic tweeter system
- Titanium woofers and midrange speakers
- Wave-surround technology
- Reference internal cabling
- High-quality connection terminals
- Multi-layer laminate cabinet
- Diamond-cut aluminum rings
- Fabric cover with magnetic fastening
- High gloss cabinet surface
- Matching speaker stand: LS 850.3



White lacquer "high gloss"  
Black fabric grill



Cherry veneer "high gloss"  
Black fabric grill



Black lacquer "high gloss"  
Black fabric grill

\* NBP: Non-binding price per item incl. 19% VAT. Subject to change and error, not guaranteed.



Chrono SL 596 DC	Chrono SL 586 DC	Chrono SL 536	Chrono SL 526	Chrono SL 556 Center
W x H x D 9.8" x 41.3" x 11.8"	W x H x D 7.5" x 39.4" x 11"	W x H x D 7.5" x 14.2" x 10.6"	W x H x D 6.7" x 7.7" x 10.2"	W x H x D 17.9" x 6.7" x 11.8"
Color HG HG	Color HG HG	Color HG HG	Color HG HG	Color HG HG



Chrono SL 516 OnWall	Subwoofer (recommendation) SUB 1500 R
W x H x D 6.7" x 11.6" x 3.5"	W x H x D 15" x 19.9" x 18.1"
Color HG HG	Color HG HG

# CHRONO SL

The high standards of this series are reflected in the elaborate design of the seamless cabinets. With multi-layer laminate cabinets and high-gloss finish, these speakers look like they formed in a mold. Diamond-cut aluminum rings and titanium speaker membranes round out the high quality standards of the new Chrono SL.

- Aluminum-manganese tweeter system
- Titanium woofers and midrange speakers
- Wave-surround technology
- High-quality internal cabling
- Bi-wiring terminal
- Diamond-cut aluminum rings
- Fabric cover with magnetic fastening
- High gloss cabinet surface
- Matching speaker stand: LS 650



White lacquer "high gloss"  
Black fabric grill



Black lacquer "high gloss"  
Black fabric grill

\* NBP: Non-binding price per item incl. 19% VAT. Subject to change and error, not guaranteed.



Chrono 519 DC	Chrono 518 DC	Chrono 517	Chrono 513	Chrono 512
W x H x D 9.8" x 41.3" x 11.8"	W x H x D 9" x 39.4" x 11"	W x H x D 9" x 37.4" x 11"	W x H x D 7.5" x 14.2" x 10.6"	W x H x D 6.7" x 11.6" x 10.2"
Color HG HG	Color HG HG	Color HG HG	Color HG HG	Color HG HG



Chrono 515 Center	Chrono 511 OnWall	Subwoofer (recommendation) SUB 80.2
W x H x D 17.9" x 6.7" x 11.8"	W x H x D 6.7" x 11.6" x 3.5"	W x H x D 10.8" x 15" x 16.5"
Color HG HG	Color HG HG	Color HG HG

# CHRONO

The high-gloss varnished baffle combined with a vinyl cabinet surface and Canton's typical diamond-cut aluminum rings are defining features of the current Chrono series. Proven technology within: aluminum-manganese tweeters, 18 dB crossover and midrange systems with aluminum cone membranes and our latest version of our wave surrounds.

- Aluminum-manganese tweeter system
- Aluminum woofers and midrange speakers
- Wave-surround technology
- Diamond-cut aluminum rings
- Removable fabric cover
- Massive baffle in high gloss
- Floorstanding speaker with "Rear-Fix"
- Vinyl cabinet surface
- Matching speaker stand: LS 660



White decor  
White lacquer "high gloss"  
Black fabric grill



Black ash decor  
Black lacquer "high gloss"  
Black fabric grill

\* NBP: Non-binding price per item incl. 19% VAT. Subject to change and error, not guaranteed.





Ergo 690 DC	Ergo 670 DC	Ergo 620	Ergo 655 Center
W x H x D 9.1" x 41.3" x 12"	W x H x D 8.5" x 37.4" x 11.2"	W x H x D 8.1" x 13.4" x 10.8"	W x H x D 20.9" x 8.1" x 11.2"
Color 	Color 	Color 	Color 



Subwoofer (recommendation) SUB 650
W x H x D 14.2" x 18.9" x 19.7"
Color 

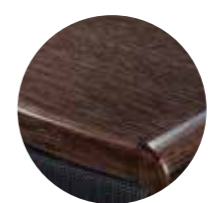
# ERGO

Anyone looking for that classic Hi-Fi sound will find exactly what they want with the Ergo series. The timeless design with premium real-wood veneer, the metal grill front covers, the rounded cabinet corners typical of Ergo, and the classic chassis arrangement: tweeters and midrange at the top and massive bass at the bottom with bass reflex pipe facing out to the front.

- Aluminum-manganese tweeter system
- Aluminum woofers and midrange speakers
- Wave-surround technology
- High-quality internal cabling
- Bi-wiring terminal
- Metal grill front cover, removable
- Cabinets with real-wood veneer
- Matching speaker stand: LS 650



Cherry veneer  
Black metal grill



Wenge veneer  
Black metal grill



Black ash veneer  
Black metal grill

\* NBP: Non-binding price per item incl. 19 % VAT. Subject to change and error, not guaranteed.





## GLE

On the outside, the speakers stand out with their matte, integrated and slender baffle. The two-color design in black makassar ebony is a true optical highlight. The GLE series is technically impressive with its driver system and aluminum cone membranes, surrounds with wave technology and a soft dome tweeter. These stand-out features have made the GLE series into one of the best-selling speaker ranges in Europe.

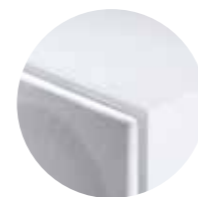
- Soft dome tweeter system
- Aluminum woofers and mid range speakers
- Wave-surround technology
- Polycarbonate speaker baskets
- Removable fabric cover
- Baffle in matt lacquer
- Cabinet in vinyl decor
- Matching speaker stand: LS 660



GLE 496	GLE 476	GLE 436	GLE 426	GLE 456 Center
W x H x D 8.3" x 41.7" x 12.2"	W x H x D 7.5" x 37.8" x 11.4"	W x H x D 7.5" x 14.2" x 11"	W x H x D 6.7" x 11.6" x 10.6"	W x H x D 17.9" x 6.7" x 12.2"
Color <input type="radio"/> <input checked="" type="radio"/> <input type="radio"/>	Color <input type="radio"/> <input checked="" type="radio"/>	Color <input type="radio"/> <input checked="" type="radio"/>	Color <input type="radio"/> <input checked="" type="radio"/> <input type="radio"/>	Color <input type="radio"/> <input checked="" type="radio"/> <input type="radio"/>



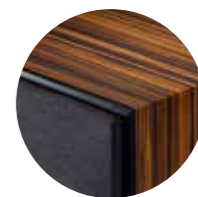
GLE 416 OnWall	GLE 417 OnWall	Subwoofer (recommendation) SUB 8.2
W x H x D 6.7" x 11.6" x 3.9"	W x H x D 6.7" x 20.5" x 3.3"	W x H x D 10.8" x 15.1" x 16.5"
Color <input type="radio"/> <input checked="" type="radio"/> <input type="radio"/>	Color <input type="radio"/> <input checked="" type="radio"/>	Color <input type="radio"/> <input checked="" type="radio"/>



White vinyl decor  
White lacquer  
White fabric grill



Black vinyl decor  
Black lacquer  
Black fabric grill



Makassar vinyl decor  
Black lacquer  
Black fabric grill

\* NBP: Non-binding price per item incl. 19% VAT. Subject to change and error, not guaranteed.



CD 290.3	CD 250.3	CD 220.3
W x H x D 5.5" x 42.3" x 3.9"	W x H x D 16.9" x 5.5" x 3.9"	W x H x D 5.5" x 8.5" x 3.9"
Color HG <input type="radio"/> <input checked="" type="radio"/>	Color HG <input type="radio"/> <input checked="" type="radio"/>	Color HG <input type="radio"/> <input checked="" type="radio"/>



Subwoofer (recommendation)

**SUB 600**

W x H x D  
10.6" x 13.1" x 11.6"

Color  
HG

## CD

Our CD series is the choice for variety with three different cabinet types. What they all have in common, however, is their slim design and high-quality surfaces with brushed aluminum or high-gloss lacquer. But behind the elegant, metal front covers, you'll find the typical Canton technology. These standing speakers have surprisingly powerful bass response and can stand tall without an additional subwoofer.

- Elegant column shape
- High-quality aluminum cabinets
- Metal grill front cover
- Center speaker incl. wall mount
- Small speaker incl. wall mount
- Matching speaker stands: LS 250.2, LS 90.2



White lacquer "high gloss"  
White metal grill



Silver anodised aluminum  
Silver metal grill



Black anodised aluminum  
Black metal grill





CD 1090	CD 1050	CD 1020
W x H x D 3.5" x 40.6" x 3.5"	W x H x D 16.9" x 3.5" x 3.5"	W x H x D 3.5" x 5.5" x 3.5"
Color HG ●	Color HG ●	Color HG ●



CD 190.2	CD 150.2	CD 120.2
W x H x D 3.5" x 39.4" x 3.9"	W x H x D 14.2" x 3.5" x 3.9"	W x H x D 3.5" x 5.5" x 3.9"
Color HG ●	Color HG ●	Color HG ●



Subwoofer (recommendation)

**SUB 600**

W x H x D  
10.6" x 13.1" x 11.6"

Color  
HG ●



Subwoofer (recommendation)

**SUB 600**

B x H x T  
10.6" x 13.1" x 11.6"

Color  
HG ●



White lacquer "high gloss"  
White metal grill



Black lacquer "high gloss"  
Black metal grill



White lacquer "high gloss" aluminum  
White metal grill



Black anodised aluminum  
Black metal grill



## SUBWOOFER

Our powerful, active subwoofers all follow the bass reflex principle and ensure a solid bass foundation in a compact design. Generous reverberation systems with aluminum or titanium speaker membranes combined with 3rd generation wave surround technology ensure precise mechanical performance. The room compensation technology, integrated in the larger models, allows the speakers to be adjusted to suit the acoustics of the room.

- Long throw woofer
- Dual compound aluminum membranes
- Down-firing bass reflex system
- High-quality digital amplifiers
- High and low-level inputs
- Massive cabinet construction
- Compact, timeless cube design
- ASF 75 SC with wall mount



SUB 1500 R	SUB 900	SUB 80.2	SUB 600	SUB 650
W x H x D 15" x 19.9" x 18.1"	W x H x D 10.8" x 15" x 14.9"	W x H x D 10.8" x 15" x 16.5"	W x H x D 10.6" x 13.1" x 11.6"	B x H x T 14.2" x 18.9" x 19.7"
Color <input type="radio"/> HG <input checked="" type="radio"/> HG	Color <input type="radio"/> HG <input checked="" type="radio"/> HG	Color <input type="radio"/> <input checked="" type="radio"/>	Color <input type="radio"/> HG <input checked="" type="radio"/> HG	Color <input checked="" type="radio"/> ES <input type="radio"/>



SUB 12.2	SUB 10.2	SUB 8.2	ASF 75 SC
W x H x D 14.2" x 18.1" x 19.7"	W x H x D 12.6" x 17.1" x 17.9"	W x H x D 10.8" x 15.1" x 16.5"	B x H x T 16.9" x 6.1" x 16.1"
Color <input type="radio"/> <input checked="" type="radio"/>	Color <input type="radio"/> <input checked="" type="radio"/>	Color <input type="radio"/> <input checked="" type="radio"/>	Color <input type="radio"/> <input checked="" type="radio"/>



SUB 1500 R, SUB 900: White lacquer "high gloss" Black fabric grill  
 SUB 1500 R, SUB 900: Black lacquer "high gloss" Black fabric grill  
 SUB 80.2: White vinyl decor, White lacquer "high gloss" Black fabric grill  
 SUB 80.2: Ash vinyl decor Black lacquer "high gloss" Black fabric grill  
 SUB 12.2, 10.2, 8.2: White vinyl decor White lacquer "semi-gloss" White fabric grill  
 SUB 12.2, 10.2, 8.2: Black vinyl decor Black lacquer "semi-gloss" Black fabric grill

\* NBP: Non-binding price per item incl. 19 % VAT. Subject to change and error, not guaranteed.





## TV-SOUNDSYSTEM

It's hard to imagine a modern flatscreen TV without good speaker system. Our TV-Soundsystem range provides that perfect movie theater feeling along with excellent sound for music, all with minimal connection efforts. In addition to digital and analogue connections, all systems are equipped with Bluetooth®- and aptX®-technology for the best possible wireless connection quality.

- Full 5.1 surround experience
- Bluetooth® 3.0 with aptX® technology
- Soundbars with integrated wall mounts
- Minimum cable requirement
- Sounddecks with integrated subwoofer
- High-quality HDF cabinets
- Controllable via TV remote
- DM 90.3 with HDMI



DM 90.3	DM 100	DM 75	DM 55
W x H x D 35.4" x 5.7" x 11.8"	W x H x D 39.4" x 2.7" x 13"	W x H x D 28.5" x 2.7" x 12.6"	W x H x D 21.7" x 2.7" x 11.8"
Color <input type="radio"/> <input checked="" type="radio"/> HG	Color <input type="radio"/> <input type="radio"/> <input checked="" type="radio"/>	Color <input type="radio"/> <input type="radio"/> <input checked="" type="radio"/>	Color <input type="radio"/> <input type="radio"/> <input checked="" type="radio"/>



DM 9	DM 900
W x H x D 35" x 4.7" x 2.8"	W x H x D 35" x 2.4" x 2.6"
Color <input type="radio"/> <input checked="" type="radio"/>	Color <input type="radio"/> <input checked="" type="radio"/>



White lacquer, White glass  
White metal grill



Silver lacquer, Silver glass  
White metal grill



Black lacquer, Black glass  
Black metal grill



Black lacquer "high gloss"  
Black metal grill

\* NBP: Non-binding price per item incl. 19% VAT. Subject to change and error, not guaranteed.



Movie 2050.2	Movie 2005.2	Movie 1550	Movie 1505
W x H x D	W x H x D	W x H x D	W x H x D
Front: 5.5" x 41.3" x 4.1"	Front: 5.5" x 8.4" x 4.1"	Front: 3.5" x 40.6" x 3.5"	Front: 3.5" x 40.6" x 3.5"
Center: 15.8" x 5.5" x 4.1"	Center: 15.8" x 5.5" x 4.1"	Center: 16.9" x 3.5" x 3.5"	Center: 16.9" x 3.5" x 3.5"
Surround: 5.5" x 8.4" x 4.1"	Surround: 5.5" x 8.4" x 4.1"	Surround: 3.5" x 5.5" x 3.5"	Surround: 3.5" x 5.5" x 3.5"
Subwoofer: 10.6" x 13.2" x 11.6"	Subwoofer: 10.6" x 13.2" x 11.6"	Subwoofer: 10.6" x 13.2" x 11.4"	Subwoofer: 10.6" x 13.2" x 11.4"
Color	Color	Color	Color
<input type="radio"/> HG <input checked="" type="radio"/>	<input type="radio"/> HG <input checked="" type="radio"/>	<input type="radio"/> HG <input checked="" type="radio"/> HG	<input type="radio"/> HG <input checked="" type="radio"/> HG

# 5.1 MOVIE

The ideal home cinema has six speakers: two front, two back, one center and a powerful active subwoofer. Whether it's a high-end system with two floorstanding speakers in the front, or a compact set like Movie 75 for smaller rooms: our wide range of surround solutions offers the right match for every need.

- Aluminum tweeter system
- Metal grill front cover
- Matching speaker stands: LS 80.2, LS 90.2, LS 250.2
- Powerful active subwoofers
- Wall mount for center and surround speakers
- Aluminum or polycarbonate cabinets



Movie 2050.2, Movie 2005.2: White lacquer "high gloss" White metal grill  
 Movie 2050.2, Movie 2005.2: Black anodized aluminium Black metal grill  
 Movie 1550, Movie 1505: White lacquer "high gloss" White metal grill  
 Movie 1550, Movie 1505: Black lacquer "high gloss" Black metal grill

\* NBP: Non-binding price per item incl. 19% VAT. Subject to change and error, not guaranteed.





Movie 1050.2	Movie 1005.2	Movie 365	Movie 265
W x H x D	W x H x D	W x H x D	W x H x D
Front: 3.5" x 39.4" x 3.9"	Front: 3.5" x 5.4" x 3.9"	Front: 4.3" x 11.4" x 4.8"	Front: 3.5" x 7.7" x 4.2"
Center: 8.7" x 3.5" x 3.9"	Center: 8.7" x 3.5" x 3.9"	Center: 11.4" x 4.3" x 4.8"	Center: 7.7" x 4.2" x 3.5"
Surround: 3.5" x 5.4" x 3.9"	Surround: 3.5" x 5.4" x 3.9"	Surround: 4.3" x 11.4" x 4.8"	Surround: 3.5" x 7.7" x 4.2"
Subwoofer: 9.5" x 15.9" x 16.5"	Subwoofer: 9.5" x 15.9" x 16.5"	Subwoofer: 9.5" x 15.9" x 16.5"	Subwoofer: 9.5" x 15.9" x 16.5"
Color	Color	Color	Color
<input type="radio"/> HG <input checked="" type="radio"/>	<input type="radio"/> HG <input checked="" type="radio"/>	<input type="radio"/> <input checked="" type="radio"/>	<input type="radio"/> <input checked="" type="radio"/>



Movie 165	Movie 135	Movie 95	Movie 75
W x H x D	W x H x D	W x H x D	W x H x D
Front: 4.3" x 6.3" x 4.8"	Front: 3.5" x 4.6" x 4.2"	Front: 3.5" x 3.5" x 4.2"	Front: 3.5" x 3.5" x 4.2"
Center: 11.4" x 10.8" x 4.8"	Center: 7.7" x 3.5" x 4.2"	Center: 7.7" x 3.5" x 4.2"	Center: 7.7" x 3.5" x 4.2"
Surround: 4.3" x 6.3" x 4.8"	Surround: 3.5" x 4.6" x 4.2"	Surround: 3.5" x 3.5" x 4.2"	Surround: 3.5" x 3.5" x 4.2"
Subwoofer: 9.5" x 15.9" x 16.5"	Subwoofer: 9.5" x 15.9" x 16.7"	Subwoofer: 9.5" x 15.9" x 16.7"	Subwoofer: 9.1" x 14.2" x 15.8"
Color	Color	Color	Color
<input type="radio"/> <input checked="" type="radio"/>	<input type="radio"/> <input checked="" type="radio"/>	<input type="radio"/> <input checked="" type="radio"/>	<input type="radio"/> <input checked="" type="radio"/>



White lacquer "semi-gloss"  
White metal grill



White lacquer "high gloss"  
White metal grill



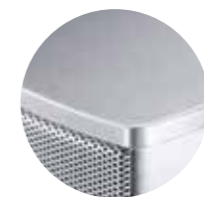
Black lacquer "semi-gloss"  
Black metal grill



Black lacquer anodized  
Black metal grill



White lacquer "semi-gloss"  
White metal grill



Silver lacquer "semi-gloss"  
Silver metal grill



Black lacquer "semi-gloss"  
Black metal grill



musicbox S

W x H x D

9.7" x 5.5" x 2.2"

Color



musicbox XS

W x H x D

7.3" x 2.2" x 2.5"

Color



# MUSICBOX

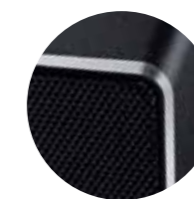
The world of music has changed drastically with MP3s and downloads. Nevertheless, the same rules still apply for speakers: when it comes to good, it all depends on the technology.

Our portable Bluetooth® speakers unify state-of-the-art technology with ease of use and elegant design. They deliver that irreplicable Canton sound when and wherever you want it. You can even connect two of our musicboxes in stereo or party mode.

- User-friendly voice announcement
- Bluetooth® 4.0 connection
- 10 meter range
- aptX® technology
- Near Field Communication
- True Wireless mode
- Line-In
- Plays up to 10/ 18 hrs
- High-quality aluminum cabinet








Lacquer „titan“  
Black metal grill



Black lacquer „semi-gloss“  
Black metal grill

\* NBP: Non-binding price per item incl. 19 % VAT. Subject to change and error, not guaranteed.



				
<b>Atelier 700</b>	<b>Atelier 750 Center</b>	<b>Atelier 500</b>	<b>Atelier 550 Center</b>	<b>Atelier 300</b>
W x H x D	W x H x D	W x H x D	W x H x D	W x H x D
10.2" x 29.5" x 3.9"	29.5" x 10.2" x 3.9"	8.7" x 22.4" x 3.5"	22.4" x 8.7" x 3.5"	13" x 13" x 3.5"
Color	Color	Color	Color	Color
<input type="radio"/>	<input type="radio"/>	<input type="radio"/>	<input type="radio"/>	<input type="radio"/>

# ATELIER

The slim speakers in our Atelier series are only 3.9" deep and have an integrated wall mount, making them perfect for hanging on the wall. If you want to make them even more discreet, you can install them into the wall using the included installation kit. This makes them even slimmer, with the speakers protruding only 0.8" from the surface of the wall. All you see is the classic white fabric cover with a matte satin white frame.

- Aluminum-manganese tweeter system
- Cone systems with aluminium membranes
- Slim cabinet design
- Inetegrated wall mount for OnWall installation
- Mounting Kit for InWall installation
- Depth: < 3.9"
- Removable decorative frame
- Removable fabric cover



White "semi-gloss"  
White fabric grill





AM 5
W x H x D
5.5" x 9.4" x 6.3"
Color
<input type="radio"/> <input checked="" type="radio"/>

Plus XL.3
W x H x D
5.9" x 9.3" x 6.1"
Color
<input type="radio"/> <input checked="" type="radio"/>

Plus X.3
W x H x D
4.7" x 7.7" x 5.1"
Color
<input type="radio"/> <input checked="" type="radio"/>

Plus MX.3
W x H x D
3.5" x 4.5" x 3.9"
Color
<input type="radio"/> <input checked="" type="radio"/> <input type="radio"/> <input checked="" type="radio"/>



Pro XL.3
W x H x D
5.9" x 9.3" x 6.1"
Color
<input type="radio"/> <input checked="" type="radio"/>

Pro X.3
W x H x D
4.7" x 7.7" x 5.1"
Color
<input type="radio"/> <input checked="" type="radio"/>

## SPECIAL SPEAKERS

There is an ideal place for every speaker. And there are many such places for our special speakers. Our active AM 5 can act as a professional studio monitor, an effective computer speaker and even a sophisticated TV speaker. Those looking for a high-quality, yet compact passive speaker to mount on a wall will find what they need in our Plus series. The robust speakers of the Pro series can be used in high-humidity environments and, with their screw-secured universal mounting brackets, they can even be mounted on the ceiling.

### AM 5

- Aluminum tweeter system
- Neodyn magnet drive
- 80 watts output power
- Symmetric XLR input
- Universal cinch input
- Switchable high pass filter
- Switchable input sensitivity
- Switchable sound settings
- Usable with Cantomount AM wall mount



White lacquer "semi-gloss"  
White metal grill



White lacquer "high-gloss"  
White metal grill

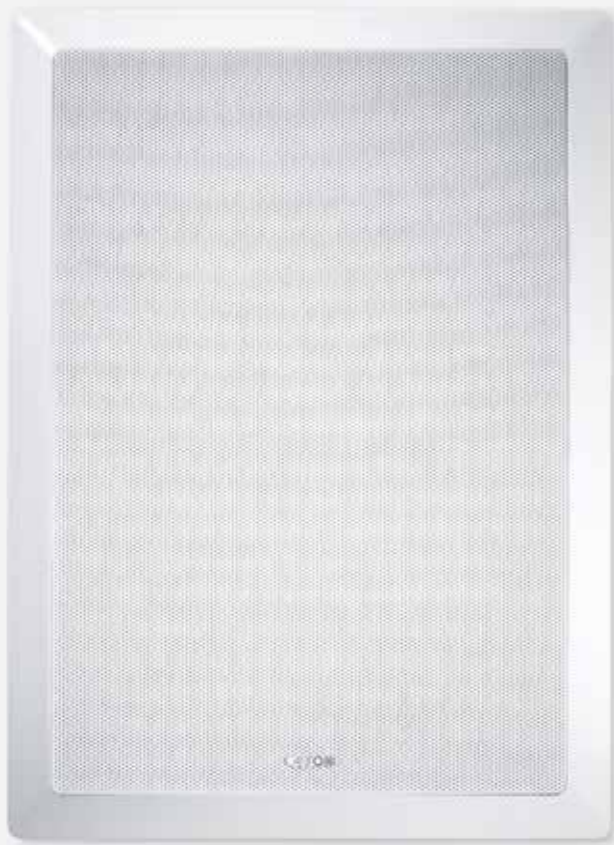


Black lacquer "semi-gloss"  
Black metal grill



Black lacquer "high-gloss"  
Black metal grill

\* NBP: Non-binding price per item incl. 19% VAT. Subject to change and error, not guaranteed.



## 403 SERIES

Designed for audio purists, the models of the 403 series are an excellent introduction to the world of Canton speakers. Its solid technology with a swivel mount soft dome tweeter allows the sound to be adapted to fit the environment. The long-throw polypropylene woofer system ensures high-volume durability.

- Swivel mount soft dome tweeter
- Adjustable levels
- Polypropylene cone membrane
- Baffle with a wide white edge
- Removable metal grill with Canton logo
- Depth: < 3.9"



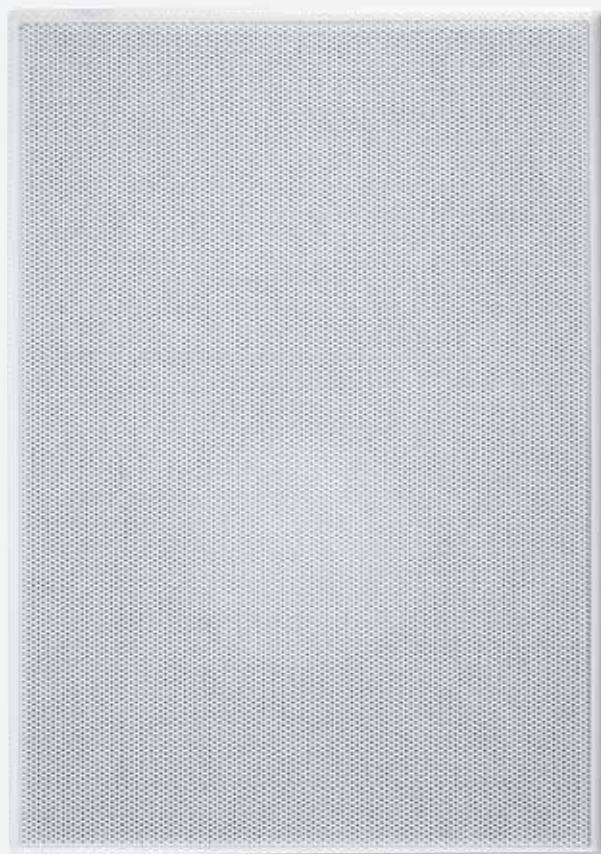
InWall 483	InWall 443	InWall 443 LCR
W x H x D 10.6" x 14.6" x 4.1"	W x H x D 9" x 12.7" x 3.3"	W x H x D 7.2" x 10.4" x 2.6"
Installation size 9.2" x 13.3"	Installation size 5.9" x 9"	Installation size 5.9" x 14.1"
Available accessories ER 8	Available accessories ER 4	Available accessories ER 4 LCR
Color <input type="radio"/>	Color <input type="radio"/>	Color <input type="radio"/>



InCeiling 483	InCeiling 463 DT	InCeiling 463	InCeiling 443
Diameter (Ø) 11.3"	Diameter (Ø) 9.4"	Diameter (Ø) 9.4"	Diameter (Ø) 7.9"
Installation size (Ø) 10"	Installation size (Ø) 8"	Installation size (Ø) 8"	Installation size (Ø) 6.5"
	Available accessories CFB 650	Available accessories CFB 650	
Color <input type="radio"/>	Color <input type="radio"/>	Color <input type="radio"/>	Color <input type="radio"/>

\* NBP: Non-binding price per item incl. 19% VAT. Subject to change and error, not guaranteed.





## 805 SERIES

Who can ask for anything more? A metal cover with a discreet frame invisibly held by magnets. An aluminum tweeter with adjustable angle and volume. A woofer system with aluminum speaker cone and powerful magnetic drive. Those are the ingredients that go into the InWall and InCeiling of the 805 series.

- Swivel mount aluminum tweeter
- Adjustable levels
- Metal cover with discreet frame
- Aluminum cone membrane
- Un-framed baffle
- Front cover with magnetic fastening

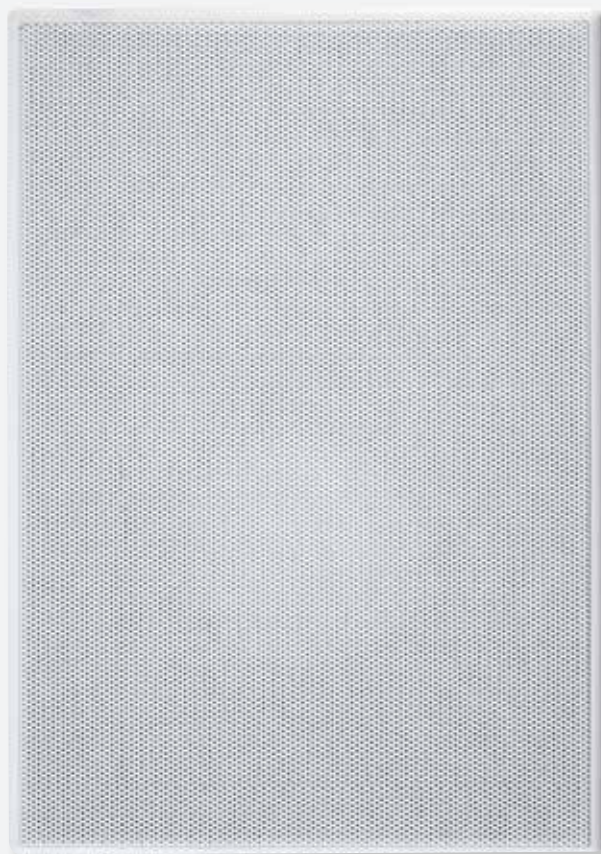


InWall 885	InWall 865	InWall 845	InWall 845 LCR	InCeiling 845 SQ
W x H x D 10.6" x 14.7" x 3.9"	W x H x D 9.3" x 13" x 3.3"	W x H x D 7.5" x 10.6" x 2.8"	W x H x D 15.7" x 7.5" x 2.8"	W x H x D 7.5" x 7.5" x 3.3"
Installation size 9.2" x 13.3"	Installation size 7.7" x 11.4"	Installation size 5.9" x 9"	Installation size 5.9" x 14.2"	Installation size (Ø) 5.8"
Available accessories ER 8 WFB 800	Available accessories ER 6 WFB 650	Available accessories ER 4	Available accessories ER 4 LCR	
Color <input type="radio"/>	Color <input type="radio"/>	Color <input type="radio"/>	Color <input type="radio"/>	Color <input type="radio"/>



InCeiling 885	InCeiling 865 DT	InCeiling 865	InCeiling 845 - 8	InCeiling 845 - 16
Diameter (Ø) 11.2"	Diameter (Ø) 9.6"	Diameter (Ø) 9.6"	Diameter (Ø) 7.5"	Diameter (Ø) 7.5"
Installation size (Ø) 9.6"	Installation size (Ø) 8"	Installation size (Ø) 8"	Installation size (Ø) 5.9"	Installation size (Ø) 5.9"
	Available accessories CFB 650	Available accessories CFB 650		
Color <input type="radio"/>	Color <input type="radio"/>	Color <input type="radio"/>	Color <input type="radio"/>	Color <input type="radio"/>





## 809 SERIES

The 809 series is for connoisseurs who like a discreetly framed metal cover, but prefer the technology of ceramic cones. They combine the look of the 805 series with the technology of our premium models. Used in combination with elements of the 805 series, they can set acoustic highlights in strategic locations while still maintaining an overall uniform design.

- Swivel mount ceramic tweeter
- Adjustable levels
- Metal cover with discreet frame
- Ceramic cone membrane
- Un-framed baffle
- Front cover with magnetic fastening

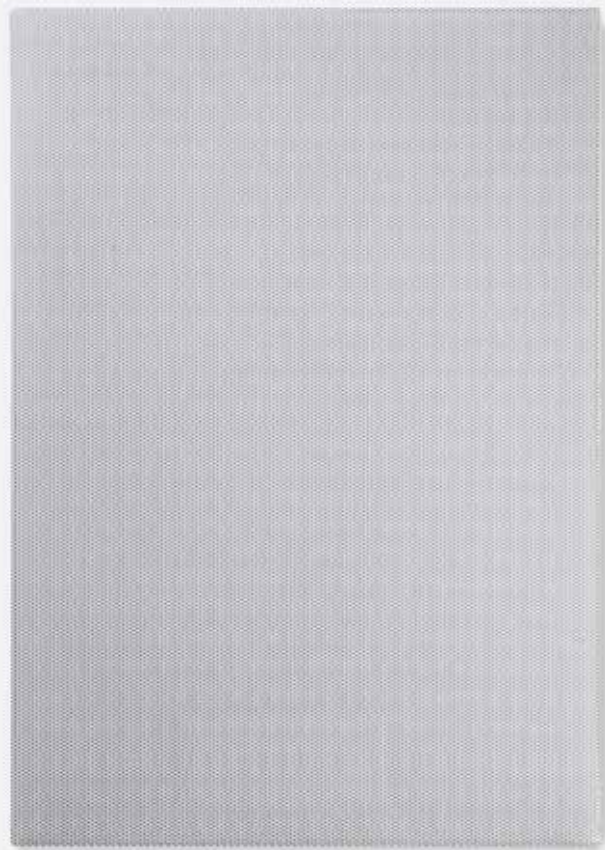


InWall 889	InWall 869	InWall 849	InWall 849 LCR
W x H x D 10.6" x 14.7" x 3.9"	W x H x D 9.3" x 13" x 3.3"	W x H x D 7.5" x 10.6" x 2.8"	W x H x D 15.7" x 7.5" x 2.8"
Installation size 9.2" x 13.3"	Installation size 7.6" x 11.4"	Installation size 5.9" x 9"	Installation size 5.9" x 14.1"
Available accessories ER 8	Available accessories ER 6 WFB 650	Available accessories ER 4	Available accessories ER 4 LCR
Color <input type="radio"/>	Color <input type="radio"/>	Color <input type="radio"/>	Color <input type="radio"/>



InCeiling 889	InCeiling 869 DT	InCeiling 869	InCeiling 849 - 16
Diameter (Ø) 11.2"	Diameter (Ø) 9.6"	Diameter (Ø) 9.6"	Diameter (Ø) 7.5"
Installation size (Ø) 9.6"	Installation size (Ø) 8"	Installation size (Ø) 8"	Installation size (Ø) 5.9"
Available accessories CFB 800	Available accessories CFB 650	Available accessories CFB 650	
Color <input type="radio"/>	Color <input type="radio"/>	Color <input type="radio"/>	Color <input type="radio"/>

\* NBP: Non-binding price per item incl. 19 % VAT. Subject to change and error, not guaranteed.



InWall 989	InWall 969	InWall 949	InWall 949 LCR
W x H x D 10.4" x 14.5" x 3.9"	W x H x D 8.8" x 12.5" x 3.4"	W x H x D 7" x 10.2" x 2.8"	W x H x D 7" x 15.2" x 2.8"
Installation size 9.2" x 13.3"	Installation size 7.6" x 11.4"	Installation size 5.9" x 9"	Installation size 5.9" x 14.1"
Available accessories ER 8 WFB 800	Available accessories ER 6 WFB 650	Available accessories ER 4	Available accessories ER 4 LCR
Color <input type="radio"/>	Color <input type="radio"/>	Color <input type="radio"/>	Color <input type="radio"/>



InCeiling 989	InCeiling 969 DT	InCeiling 969	InCeiling 949
Diameter (Ø) 10.7"	Diameter (Ø) 9.1"	Diameter (Ø) 9.1"	Diameter (Ø) 9.1"
Installation size (Ø) 6.6"	Installation size (Ø) 8"	Installation size (Ø) 8"	Installation size (Ø) 5.9"
	Available accessories CFB 650	Available accessories CFB 650	
Color <input type="radio"/>	Color <input type="radio"/>	Color <input type="radio"/>	Color <input type="radio"/>

## 909 SERIES

Like all of our built-in speakers, the models in our 909 series are 2-way systems and round out our spectrum of built-in wall and ceiling speakers. The series boasts reference technology, high-quality ceramic membranes and elegant, un-framed front cover grills.

- Swivel mount ceramic tweeter
- Ceramic cone membrane
- Adjustable levels
- Un-framed baffle
- Frameless metal grill
- Front cover with magnetic fastening





LS 850.3	LS 650	LS 660	LS 250.2	LS 90.2
Height	Height	Height	Height	Height
24"	24"	24.4"	40.9"	34.7"
Works with:	Works with:	Works with:	Works with:	Works with:
Vento 826 Vento 836 Vento 866 Center	Chrono 512 Chrono 513 Chrono 515 Center Chrono SL 526 Chrono SL 536 Chrono SL 556 Center Ergo 620 Ergo 655 Center	Chrono 512 Chrono 513 Chrono 515 Center Chrono SL 526 Chrono SL 536 Chrono SL 556 Center GLE 426 GLE 436 GLE 456 Center	Movie 2005.2 Movie 2050.2 CD 220.3 CD 250.3	Movie 75 Movie 95 Movie 135 Movie 165 Movie 1005.2 Movie 1050.2 Movie 1505 Movie 1550 CD 120.2 Plus MX.3
Color	Color	Color	Color	Color
<input type="radio"/> HG <input checked="" type="radio"/> HG	<input checked="" type="radio"/>	<input type="radio"/> HG <input checked="" type="radio"/> HG	<input checked="" type="radio"/>	<input type="radio"/> <input checked="" type="radio"/> <input type="radio"/>

## ACCESSORIES

The Canton family would not be complete without its range of speaker stands. With stands and mounts for all compact speakers, most center speakers and the satellites of our home theater systems, you'll find the right solution for optimal positioning around your listening space. You'll also find the right Cantomount for all small speakers that don't come with a wall mount.

### Speaker stands

- Cable hiding solutions
- Adjustable floor spikes
- Plate with mounting holes

### Cantomount

- Stable and solid
- Pivot mount
- Including fixtures



LS 80.2	Cantomount AM	Cantomount	Cantomount XL
Height	W x H x D	W x H x D	W x H x D
37"	3.2" x 3.1" x 2.6"	1.8" x 3.2" x 3.1"	1.8" x 3.2" x 3.9"
Works with:	Works with:	Works with:	Works with:
Plus X.3 Plus XL.3	AM 5	Plus X.3 Pro X.3	AM 5 Plus XL.3 Pro XL.3
Color	Color	Color	Color
<input checked="" type="radio"/> <input type="radio"/>	<input type="radio"/> <input checked="" type="radio"/>	<input type="radio"/> <input checked="" type="radio"/>	<input type="radio"/> <input checked="" type="radio"/>

\* NBP: Non-binding price per item incl. 19% VAT. Subject to change and error, not guaranteed.





ŠKODA



## CAR HIFI – CANTON SOUND SYSTEM FOR ŠKODA SUPERB AND OCTAVIA

We're bringing THE ART OF SOUND to the road with our partner ŠKODA: in close cooperation, we developed a premium sound system, which is available as an option in the ŠKODA Superb and ŠKODA Octavia.

The Canton sound systems for ŠKODA combine active noise reduction technology with premium virtual surround sound to create balanced acoustics for all types of music.



- 1 1 center speaker in the dashboard
- 2 4 tweeters, in the mirror encasement and door panels
- 3 2 mid-range tweeters in the door panels
- 4 2 mid-range speakers in the door panels
- 5 2 bass speakers in the door panels
- 6 1 subwoofer in the trunk
- 7 1 DSP amp under the driver's seat



## LOCATION

**Canton Elektronik GmbH + Co. KG**

Neugasse 21–23  
61276 Weilrod  
Germany

Telephone: +49 (0) 6083 287-0  
Fax: +49 (0) 6083 287-50

E-Mail: [info@canton.de](mailto:info@canton.de)

For more information and to see our online shop, see

[www.canton.de](http://www.canton.de)



Speaker stands are accessories and not included.  
Changes to the information provided, in particular technical changes, and errors cannot be ruled out.



[www.canton.de](http://www.canton.de)