

HP Data Protector Express 5.0

Ordering and Configuration Guide

Table of contents

Configuring Data Protector Express	2
Data Protector Express 5.0 Simplified Licensing	2
Data Protector Express Compatibility	2
eDelivery and Media Kit Availability	2
Data Protector Express 5.0 Part Numbers	2
Upgrading to Data Protector Express 5.0 from Earlier Versions of Data Protector Express	3
Mapping Existing Licenses to Data Protector Express 5.0 Licenses	3
Data Protector Express 4.0 SP1 Option Part Numbers	4
Data Protector Express 3.x	4
Data Protector Express 5.0 Ordering Flowchart	5
Data Protector Express 5.0 Terminology	6
Data Protector Express and Data Protector Express Basic	7
Data Protector Express Product Support	8
Care Pack Descriptions	8
Evaluation and Permanent Licenses	8
License Key Redemption	9
Data Protector Express Trialware	9
Configuration Examples	10
For More Information	12



Configuring Data Protector Express

This document provides information on configuring Data Protector Express. It focuses on Data Protector Express 5.0 and includes information for users of earlier versions of Data Protector Express. For detailed configuration information the documentation in the "[For More Information](#)" section should be consulted.

Data Protector Express 5.0 Simplified Licensing

Earlier versions of Data Protector Express had a base product plus options licensing model. The base product created the Data Protector Express Backup Domain and enabled file system backup and recovery for 1 server. Option licenses were purchased to add functionality, such as online application backup, and to extend protection to additional servers. Data Protector Express 5.0 uses an all-inclusive licensing model based only on the number of servers to be protected. There are no option licenses because each server license includes all the product functionality.

Data Protector Express Compatibility

Data Protector Express protects servers running **Windows®**, **Linux**, and **NetWare**. It also protects machines running Windows® XP, Windows Vista®, and Windows 7. There is an online backup capability for **Microsoft® Exchange Server** and **Microsoft SQL Server**. **Tape, disk, and CD/DVD** devices are supported as backup targets. See the detailed Support Matrix referenced in the "[For More Information](#)" section for detailed information.

eDelivery and Media Kit Availability

New for Data Protector Express 5.0 is the option to receive the software electronically (eDelivery). Using eDelivery, the software is downloaded and the Order Number to acquire the license key is sent electronically. It is still possible to receive Data Protector Express via a media kit. A media kit contains a CD to load the software and a paper Entitlement Certificate with an Order Number to acquire the license key. Both delivery methods use the same web-based service to acquire the license key. Each license has an e-delivery and media kit part numbers.

Data Protector Express 5.0 Part Numbers

For new users or users extending existing Data Protector Express 5.0 installations

Part #	Description
eDelivery: TC330AAE media kit: TC330A	HP Data Protector Express 5.0 for 1 Server Enables protection and all the functionality of Data Protector Express 5.0 for 1 server.
eDelivery: TC331AAE media kit: TC331A	HP Data Protector Express 5.0 for 3 Servers Enables protection and all the functionality of Data Protector Express 5.0 for 3 servers.
eDelivery: TC332AAE media kit: TC332A	HP Data Protector Express 5.0 for 10 Servers Enables protection and all the functionality of Data Protector Express 5.0 for 10 servers.

For Data Protector Express Basic or Data Protector Express Single Server Edition users

Part #	Description
eDelivery: TC333AAE media kit: TC333A	HP Data Protector Express 5.0 for 1 Server upgrade from Data Protector Express Basic Enables protection and all the functionality of Data Protector Express 5.0 for 1 server. Requires existing installation of Data Protector Express Basic or Data Protector Express Single Server Edition.

Upgrading to Data Protector Express 5.0 from Earlier Versions of Data Protector Express

To upgrade to Data Protector Express 5.0 from earlier versions (3.x or 4.x) a valid support contract is required. There are no version upgrade part numbers for Data Protector Express 5.0. If you have a valid support contract the upgrade to Data Protector Express 5.0 is free of charge.

If the support contract has expired, then it is necessary to purchasing a return to support (RTS) contract in order to receive the upgrade to Data Protector Express 5.0. To do this, the HP Contract Administrator (CA) should be contacted.

For all users under support the free of charge upgrade to Data Protector Express 5.0 is available for 1 year from the release of Data Protector Express 5.0. This means, an upgrade to Data Protector Express 5.0 can be provided to all entitled users until 26 September 2011.

Mapping Existing Licenses to Data Protector Express 5.0 Licenses

The new all-inclusive licensing scheme of Data Protector Express 5.0 means there is not a one-to-one mapping of existing licenses to Data Protector Express 5.0 licenses. It also means that every upgrade to Data Protector Express 5.0 will result in increased functionality.

To calculate the number of Data Protector Express 5.0 licenses required for the upgrade it is necessary to calculate the number of existing Network Server Agent licenses installed. These could be a 1 pack or three pack. The number of Data Protector Express 5.0 licenses is simply the total number of Network Server Agents plus one for the base product. The type of base product does not matter for upgrade purposes. It could be a Data Protector Express Backup Server, an upgrade to Data Protector Express from Data Protector Express Single Server Edition or it could be Data Protector Express for Microsoft Small Business Server. The number of options, other than the Network Server Agent, has no impact on the Data Protector Express 5.0 licenses required.

For example, if a user has two Network Server Agent 1 Pack licenses he is entitled to three Data Protector Express 5.0 licenses.

For example, if a user has three Network Server Agents 3 Packs licenses and one Network Server Agent 1 Pack license he is entitled to 10 Data Protector Express 5.0 licenses.

For example, if a user has two Network Server Agents 3 Packs licenses and four Network Server Agent 1 Pack licenses he is entitled to 11 Data Protector Express 5.0 licenses.

Data Protector Express 4.0 SP1 Option Part Numbers

These are offered to enable existing users to extend and add functionality to their existing Data Protector Express 4.0 installation. New Data Protector Express 4.0 installations cannot be created because the Data Protector Express 4.0 base products are no longer offered. For the majority of customers it is recommended to upgrade to Data Protector Express 5.0 to take advantage of the new features and simplified, all-inclusive licensing.

Part #	Description
BB121BA	HP Data Protector Express 4.0 SP1 Network Server Agent LTU¹ Add a server-class machine to a Data Protector Express Backup Domain.
BB122BA	HP Data Protector Express 4.0 SP1 Network Server Agent (3 pack) LTU¹ Add up to three server-class machines to a Data Protector Express Backup Domain.
BB125BA	HP Data Protector 4.0 SP1 Express Online Application Agent LTU² Online protection for a Microsoft Exchange Server or a Microsoft SQL Server.
BB128BA	HP Data Protector 4.0 SP1 Express Bare Metal Disaster Recovery LTU³ Automate system recovery and return system to state of last backup without requiring a reinstallation of the operating system. Supports OBDR feature of HP tape drives.
BB130BA	HP Data Protector 4.0 SP1 Express D2Any2Any LTU⁴ Enable automatic, policy-driven movement of backup data to any other supported media.
BB133BA	HP Data Protector 4.0 SP1 Express Drive Expansion LTU⁵ Add support for multiple drives in tape libraries, Data Protector Express Virtual Libraries and virtual tape libraries (VTLs).

Data Protector Express 3.x

Data Protector Express 3.x options are no longer available. Note that Data Protector Express 4.0 options are not compatible with Data Protector Express 3.x installations. Existing Data Protector Express 3.x users are able to continue using their installation and, with a valid support contract, receive support from HP on their Data Protector Express 3.x installation. For the majority of customers it is recommended to upgrade to Data Protector Express 5.0 to take advantage of the new features and simplified licensing.

¹ Adds a server-class machine to the Data Protector Express Backup Domain and enables that machine as a local media server or a media server for the Backup Domain. Enables backup over the network or locally. One Network Server Backup Agent required for each machine is added to the Backup Domain. Available in a single pack and pack of three.

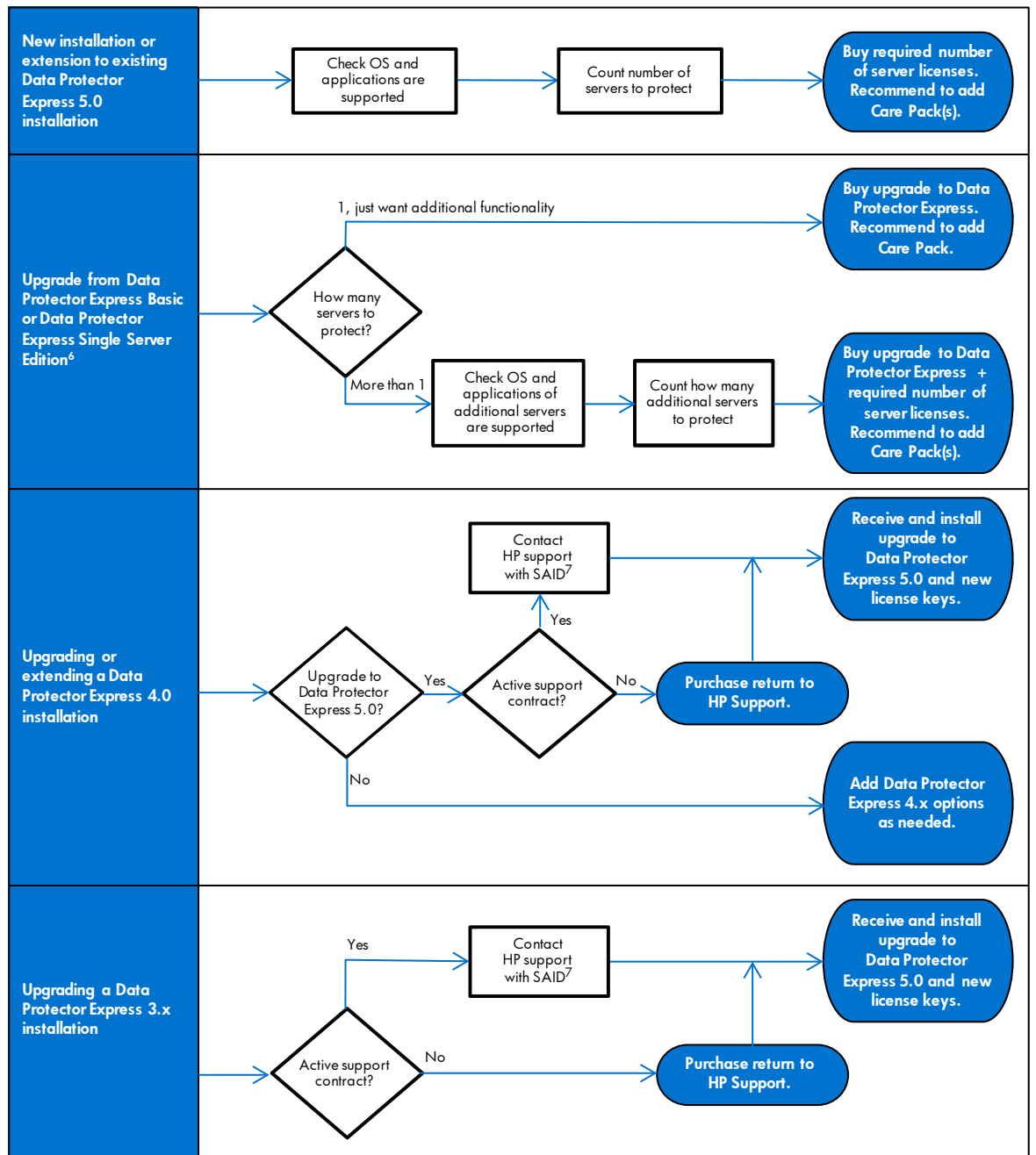
² Enables online protection for Microsoft Exchange Servers and Microsoft SQL Servers. The backup runs without taking the application offline. Also requires a Network Server Agent unless the application is running on the same machine as the Backup Server. One LTU needed per machine per application protected.

³ Automated disaster recovery for a single machine. This option enables a machine to be quickly recovered, following a disaster, to its state when the most recent full backup was made. Supports boot from CD/DVD and supports HP tape drives' One Button Disaster Recovery (OBDR) feature to allow booting and recovery from tape. The BMDR feature requires locally attached device for the boot media. One LTU per machine that requires automated disaster recovery.

⁴ The D2Any2Any option allows the implementation of multi-tier backup—typically backups are written to disk and then moved/copied to tape (D2D2T). The movement is controlled by user-defined copy policies. For a Data Protector Express Virtual Library a single copy policy may be set for all backups written to the Virtual Library or the copy policy may be defined with the backup job. For other backup targets, the copy policies are always defined with the backup job. One D2Any2Any LTU required per Data Protector Express Backup Domain.

⁵ A Data Protector Express Backup Server or Data Protector Network Server Agent supports single drive physical devices or hosted Virtual Libraries devices. Tape drives, tape autoloaders, tape enclosures, and single drive Virtual Libraries do not require a Drive Expansion LTU. Additional drives added or configured to a device require a Data Protector Express Drive Expansion LTU. Any device that has two or more drives requires the Drive Expansion LTU for each drive in excess of one. For example, a four drive tape library requires three Drive Expansion LTUs.

Data Protector Express 5.0 Ordering Flowchart



⁶ Data Protector Express Basic replaced Data Protector Express Single Server Edition with the release of version 5.0.

⁷ SAID = Support Agreement Identifier. It is the 12-digit number, on the support contract, required when accessing HP support.

Data Protector Express 5.0 Terminology

The Data Protector Express **Backup Domain** is made up of all machines protected by Data Protector Express, the backup devices, backup media, and the Data Protector Express catalog. All machines and all backup devices in a Backup Domain are known to all other machines in the Backup Domain.

The Data Protector Express **catalog** is the database that stores information for the Backup Domain. The information stored includes jobs and job history, device information, media, and license key details. There is one Backup Domain per Data Protector Express catalog and one Data Protector Express catalog per Backup Domain.

When Data Protector Express is installed, the Backup Domain and the Data Protector Express catalog are created. The location of the catalog is typically on this first machine in the Data Protector Express Backup Domain but can be specified to be stored at another location. As Data Protector Express is installed on more machines these are added to the catalog and join the Backup Domain. One license is required for each server-class machines to join the Data Protector Express Backup Domain. Data Protector Express 5.0 uses **stackable licensing** which means that additional server licenses are simply added to existing server(s) licenses. There is no concept of base products and options in Data Protector Express 5.0. Each stackable server license enables all the functionality of Data Protector Express for the licensed server. For example stacking a 3 server pack license (TC331AAE) on top of a 1 server pack license (TC330AAE) enables all the functionality of Data Protector Express for 4 servers.

All the following functionality is included in each stackable server license:

A **media server** is the machine that owns and writes/reads backup data to/from a backup device. One or all machines in the Data Protector Express Backup Domain can act as media servers for local or network backup and recovery of any machine in the Data Protector Express Backup Domain.

Bare Metal Disaster Recovery is the process of rebuilding a new or repaired machine ("bare metal") from scratch after a major failure. Traditionally, this required reinstalling the operating system, reloading applications, and then restoring data and settings. The Data Protector Express Bare Metal Disaster Recovery (BMDR) functionality automates this process.

Disk backup is increasingly used to supplement tape backup. There are two ways to backup to disk using Data Protector Express. Any available local or network accessible disk can be used as a backup target. This is managed by creating a Data Protector Express **Virtual Library**. A Data Protector Express Virtual Library emulates the geometry of a generic tape library with a configurable number of virtual drives and virtual slots. Once created, it is used in the same way as a physical tape library. The second way to backup to disk is to use a **Virtual Tape Library (VTL)**. A VTL is a disk-based hardware device that is used the same way as a physical tape library.

When backing up to disk there is often a requirement to copy the backup data to tape. This can be done manually using a copy job or automated using the Data Protector Express **D2Any2Any feature**. If the backup target is a Data Protector Express Virtual Library, the D2Any2Any option allows policies to be created for the entire Virtual Library to move or copy the backups from the Virtual Library to tape. If the backup is to any other supported device, the D2Any2Any feature allows copy polices to be associated with the backup job, hence on completion of the backup job, the backup data is automatically copied to tape (or any other supported media).

Online backup is used to protect databases while they are in use. This allows the backup to run without disconnecting users or applications. Data Protector Express **Online Application Protection** enables the online backup of Microsoft Exchange and Microsoft SQL Server.

Data Protector Express and Data Protector Express Basic

Data Protector Express Basic⁸ is a special version of Data Protector Express that is included as part of the HP StorageWorks tape backup products.⁹ It is not a saleable product and the only way to acquire it is with these tape products. Data Protector Express Basic has a subset of Data Protector Express functionality. This functionality enables and supports the tape drive features such as WORM, One Button Disaster Recovery (OBDR), and backup data encryption to securely protect one machine. Data Protector Express Basic is easily and economically upgraded to Data Protector Express 5.0 for 1 Server by purchasing the upgrade to part number: TC333A (eDelivery) or TC333AA media kit.

The table below compares Data Protector Express and Data Protector Express Basic.

	Data Protector Express	Data Protector Express Basic
Availability and delivery	Sold through HP reseller partners. Delivered electronically or as a media kit + paper license key entitlement certificate.	Included with HP StorageWorks tape products. Delivered as a CD-ROM with electronic license key entitlement certificate.
Network backup to protect multiple machines	Yes, one license per machine protected. Add machines to Backup Domain as needed. All-inclusive licensing enables any machine(s) to act as media server(s).	No, local backup of one machine.
Backup of machines running Windows XP, Windows Vista, or Windows 7	Unlimited number supported with first server license installed.	Local backup of one machine. Machine can be running any supported operating system.
Protect applications online	Yes, Microsoft Exchange, Microsoft SQL Server.	No
Job scheduling options	Run job each minute, hour, day, week, month, or year.	Run job each day, week, month, or year
Multiplexing	Up to 8 concurrent data streams per device.	Up to 4 concurrent data streams per device.
Disaster Recovery (DR)	Boot from CD/DVD and HP tape drives' OBDR ¹⁰ supported.	HP tape drives' OBDR ¹⁰ supported.
Supported backup devices	Disk, tape, CD/DVD.	HP StorageWorks tape drives.
Multi-tier backup and recovery	Enabled with D2Any2Any feature.	No
Support	No support included. Range of Care Packs available that provide phone and email support, rights to service packs and notification and delivery of new versions.	Basic getting started and troubleshooting phone and email support included under tape product warranty. Download service packs. No entitlement to new versions.
Upgrading and extending	Stack licenses as needed to extend the number of protected machines. All functionality included with each license.	Extend functionality by upgrading to Data Protector Express 5.0 for 1 server. Then purchase and stack licenses for additional machines as needed.

⁸ In versions 3.x and 4.x, the software included with the HP StorageWorks tape products was called Data Protector Express Single Server Edition.

⁹ HP Data Protector Express basic is included with all HP StorageWorks tape drives, all HP StorageWorks tape autoloaders and HP StorageWorks MSL 2024 and HP StorageWorks MSL 4048 tape libraries.

¹⁰ One Button Disaster Recovery

Data Protector Express Product Support

It is recommended that a 3 year 24x7 Software Technical Support Care Pack (HA107A3) is purchased for each product license to provide support and updates for all Data Protector Express product licenses.

Note: There is no product support included with Data Protector Express 5.0. All required support must be purchased via a Care Pack for each product license.

1 Year Care Packs Care Pack Type	Data Protector Express 5.0 for 1 Server	Data Protector Express 5.0 for 3 Servers	Data Protector Express 5.0 for 10 Servers	Upgrade from Data Protector Express Basic
9x5 Software Technical Support	HA106A1-2FF	HA106A1-2FG	HA106A1-2FH	HA106A1-2FJ
24x7 Software Technical Support	HA107A1-2FF	HA107A1-2FG	HA107A1-2FH	HA107A1-2FJ

3 Year Care Packs Care Pack Type	Data Protector Express 5.0 for 1 Server	Data Protector Express 5.0 for 3 Servers	Data Protector Express 5.0 for 10 Servers	Upgrade from Data Protector Express Basic
9x5 Software Technical Support	HA106A3-2FF	HA106A3-2FG	HA106A3-2FH	HA106A3-2FJ
24x7 Software Technical Support	HA107A3-2FF	HA107A3-2FG	HA107A3-2FH	HA107A3-2FJ

Care Pack Descriptions

9x5 Software Technical Support

This Care Pack is designed for organizations deploying Data Protector Express locally in a low-complexity environment, requiring business hours product support. Also provides new versions and updates to Data Protector Express as they are released. Available for 1 or 3 years.

24x7 Software Technical Support

This Care Pack is the same as 9x5 Software Technical Support except that access to HP support agents is available all day, every day, including holidays.

Evaluation and Permanent Licenses

All versions of Data Protector Express (Data Protector Express, Data Protector Express trialware, Data Protector Express Basic) contain an embedded evaluation license. This activates the software for 60 days from the initial installation. For Data Protector Express, the evaluation license enables up to 10 servers to be protected. When a permanent license key(s) is entered, the number of servers enabled for protection depends upon the number and type of license key(s) entered. The permanent license key(s) can be entered at any time during or after the 60 day evaluation period. All jobs, settings and logs created during the evaluation period are maintained when the permanent license key(s) is added. If no permanent license is added the software ceases to work after 60 days.

The permanent license key is added by selecting "Licenses" from the Help pull-down menu. The evaluation license should be deleted before the permanent license key is added.

License Key Redemption

Data Protector Express 5.0 licenses are delivered using the web-based HP License Key Delivery Service at <https://webware.hp.com>.

To acquire a license both of the following are needed:

1. Order Number: This is received following the purchase of Data Protector Express 5.0 and may be on paper or delivered electronically. This is exchanged for the license key.
2. HP Passport (HPP): This is single sign-in service from HP that enables you to register once then log on to multiple HP websites using your HPP credentials. If you already have a HPP account simply enter this when you retrieve your license key. If you do not have a HPP account you need to create one using the link on the HP License Key Delivery Service website.

Data Protector Express Trialware

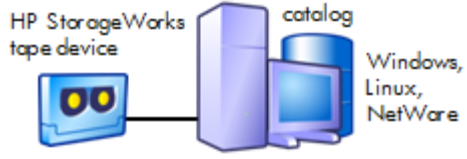
HP Data Protector Express software is available for evaluation from the HP Software Depot website at www.hp.com/go/softwaredepot. From here, select the **StorageWorks Software Demo** and **Evaluation downloads** link to open the following page.

Product	Price	
Data Protector Express Backup & Recovery Software	\$0.0 USD	Receive for Trial >>
Enterprise Fabric Management Suite (EFMS) Software	\$0.0 USD	Receive for Trial >>
HP LeftHand P4000 Virtual SAN Appliance Software	\$0.0 USD	Receive for Trial >>
HP P4000 Software Downloads	\$0.0 USD	Receive for Free >>
HP Replication Solution Mqr Media v5.1 SW	\$0.0 USD	Receive for Trial >>
HP SmartStart v3.2 for EVA Storage	\$0.0 USD	Receive for Trial >>
HP Storage Mirroring Software	\$0.0 USD	Receive for Trial >>
HP StorageWorks Command View EVA 9.2 (ABM and SBM) with Replication Solutions Manager 5.1	\$0.0 USD	Receive for Trial >>
HP StorageWorks System Copy Software for SAP	\$0.0 USD	Receive for Trial >>

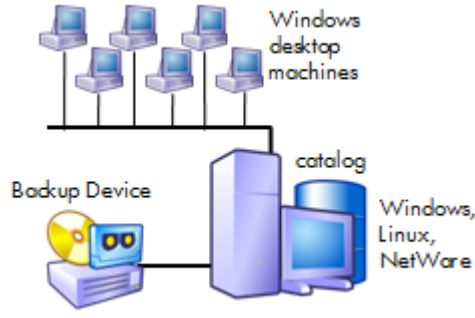
Select **Data Protector Express Backup and Recovery Software**, and then click **Receive for trial**. You will then see the information and selection window. Fill in the required fields and select **Next**. Download the software. This enables Data Protector Express 5.0 to be evaluated for 60 days to protect 10 servers.

Configuration Examples

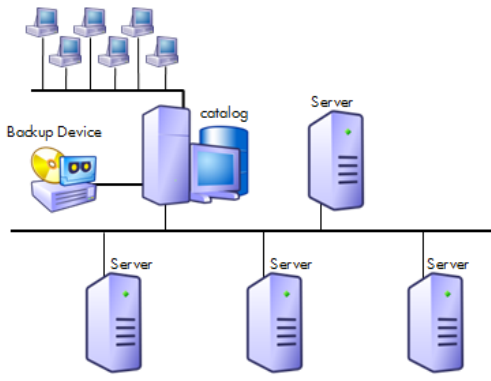
Basic protection for a single machine

	Part #	Description	Qty
	Included with tape product	Data Protector Express Basic	1
<p>Purchasers of HP StorageWorks tape drives can use Data Protector Express Basic to backup a single machine to a HP StorageWorks tape drive.</p>			

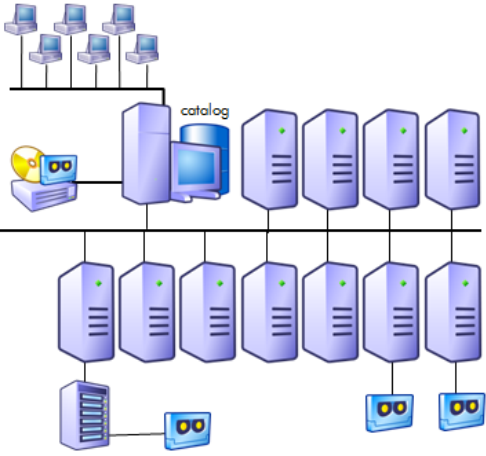
Enhanced protection for a single server-class machine

	Part #	Description	Qty
	TC330AAE (eDelivery)*	Data Protector Express for 1 Server	1
<p>Data Protector Express 5.0 for 1 Server includes all the functionality of Data Protector Express and the capability to protect an unlimited number of Windows XP, Vista, and 7 machines.</p> <p>* Owners of Data Protector Express Basic can upgrade to Data Protector Express 5.0 for 1 Server by purchasing the upgrade part number TC333AAE</p>			

Protection for 5 server-class machines

	Part #	Description	Qty
	TC330AAE (eDelivery)	Data Protector Express for 1 Server	1
	TC330AAE (eDelivery)	Data Protector Express for 1 Server	1
	TC331AAE (eDelivery)	Data Protector Express for 3 Servers	1
<p>Multiple machines are protected by stacking the required number of licenses. It is the same license regardless of what applications are running on the servers and what backup devices are being used.</p>			

Protection for 12 server-class machines

	Part #	Description	Qty
	TC333AAE (eDelivery)	Data Protector Express for 10 Servers	1
	TC330AAE (eDelivery)	Data Protector Express for 1 Server	1
	TC330AAE (eDelivery)	Data Protector Express for 1 Server	1
	<p>Multiple machines are protected by stacking the required number of licenses. It is the same license regardless of what applications are running on the servers and what backup devices are being used. The 12 servers licensed here could easily be licensed using different combinations of licenses, particularly if the environment has grown since Data Protector Express was first installed.</p>		

For More Information

Data Protector Express product information and support matrix

- <http://www.hp.com/go/dataprotectorexpress>

Data Protector Express product documentation

- <http://www.hp.com/go/dataprotectorexpress/manuals>

For Data Protector Express Basic

- <http://www.hp.com/go/dataprotectorexpress/basic>

Data Protector Express self-service support

- <http://www.hp.com/go/dataprotectorexpress> (click Guided Troubleshooting link)

Related products

- <http://www.hp.com/go/tape>
- <http://www.hp.com/go/proliant>
- <http://www.hp.com/go/d2d>

HP Storage Services

- <http://www.hp.com/services/storage>

HP Care Pack Brochure

- <http://h20195.www2.hp.com/V2/GetPDF.aspx/4AA2-7480ENW.pdf>

Share with colleagues    



© Copyright 2006–2008, 2010 Hewlett-Packard Development Company, L.P. The information contained herein is subject to change without notice. The only warranties for HP products and services are set forth in the express warranty statements accompanying such products and services. Nothing herein should be construed as constituting an additional warranty. HP shall not be liable for technical or editorial errors or omissions contained herein.

Microsoft, Windows, Windows Vista, and Windows XP are U.S. registered trademarks of Microsoft Corporation.

4AA0-7937ENW, Created November 2006; Updated August 2010, Rev. 6

