

# BOGUE

*Established 1888*

## Geography

*Nestled in the South Fork Solomon River Valley*

Bogue is situated in eastern Graham County, nestled in the valley surrounding the South Fork of the Solomon River. It wears a face much changed from when it was founded in 1888.



*This view of early day Main Street in Bogue is typical of the small rural farming communities found in the Solomon Valley.*

## People

*From Politicians to the Switzers*

D. J. Hanna of Bogue was elected in 1894 to the Kansas House of Representatives. He became Lieutenant Governor of Kansas in 1902. Oscar Brown also served in the Kansas House of Representatives, from 1951 through 1957.

Bogue High School showcased several great area sports athletes over the years. Bogue High graduate Veryl Switzer was named a Second Team Collegiate Football All-American while playing for Kansas State University in 1951 and 1952, and the next year was named a Pro-Football All-American. In 1990 he was inducted into the Kansas All Sports Hall of Fame.

Marvin Switzer won four gold medals at the Kansas State High School Track Meet for Bogue High, including three straight wins in the 100-Meter Dash in 1971, 1972, and 1973.

Phil Switzer's heroics made Bogue High's last years true "glory days." March of 1976 saw Phil and the Bluejays place second in the Class 1A State Basketball Tournament, and later that fall Bogue High won the state eight-man football championship. Phil also earned three gold medals for Bogue at the Kansas State High School Track Meet in 1976 and 1977. After Bogue High School closed in May 1977 Phil earned another gold medal while attending Hill City High School in 1978, winning the State Class 1A 100-Meter Dash event three consecutive years in all.

## Customs

*Civic Groups bring together community*

The following provide a way to get involved in the community: Men's Service Club, 4-H, Harmony Bridge Club, Tuesday Pinochle Club, TPM (a women's club), and American Legion Auxiliary.

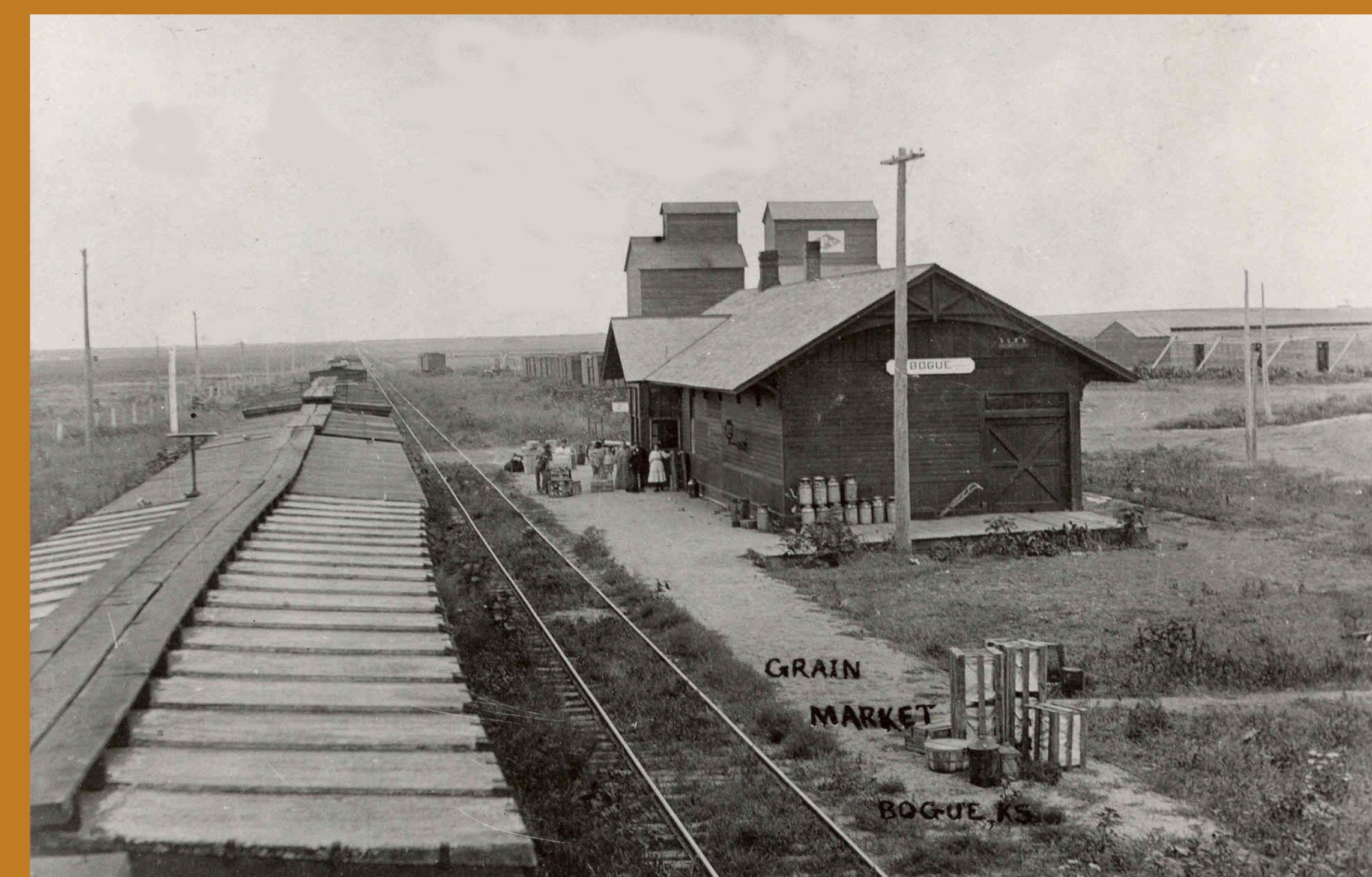
Bogue Community United Methodist Church has an active UMW (women's group). There are also active Sunday School groups like the Builder's Class and the Young Disciples and weekly bible studies.

## History

*Bogue—A Railroad Town*

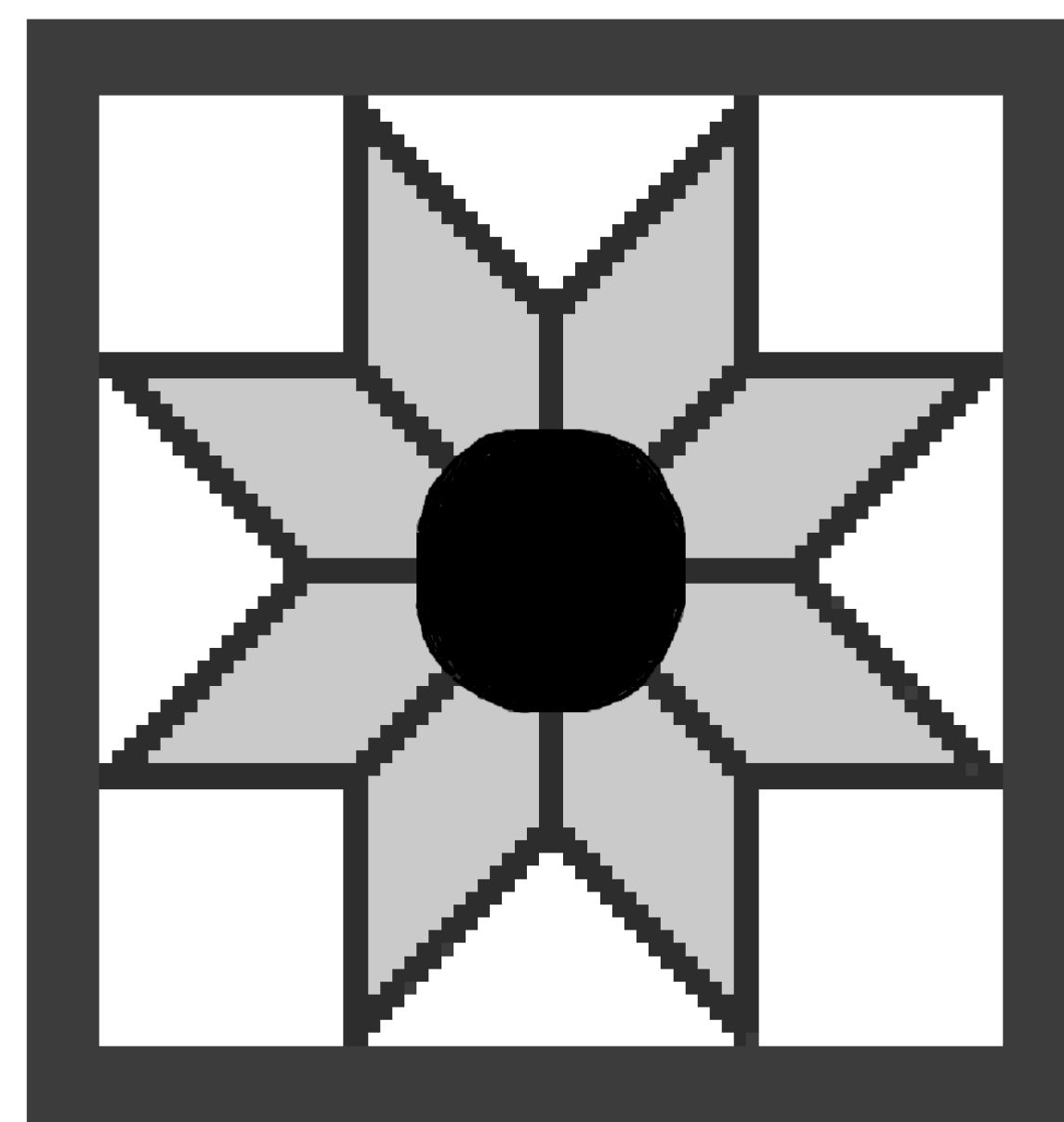
Bogue gets its name from its founder Virgil Gay Bogue, a civil engineer working with the Union Pacific Railroad. Rumors of the coming railroad first inspired people to resettle here in this small town, nestled along the South Solomon River. The railroad was completed in 1888, and the traditional depot was one of the first buildings constructed in the brand-new town. After three months, the town boasted 103 inhabitants and 38 buildings. The pioneer families endured a life of hardship and sacrifice in building Bogue, and the same mental and spiritual toughness can be found in its people today.

*The Union Pacific Railroad Depot was an important center of commerce in Bogue. The "Lincoln Branch," as this trunk line was called, served the community for decades until it was closed toward the end of the 20th Century.*



*Education in Bogue was always a source of importance in the community, from the time of this view of the town's first large public schoolhouse until 1977, when Bogue High School was closed and the schoolchildren were sent to nearby Hill City. The memories of the Bluejays of Bogue will not diminish as the years pass.*

Kansas Sampler Foundation



Eight Rural Elements

## Art / Architecture

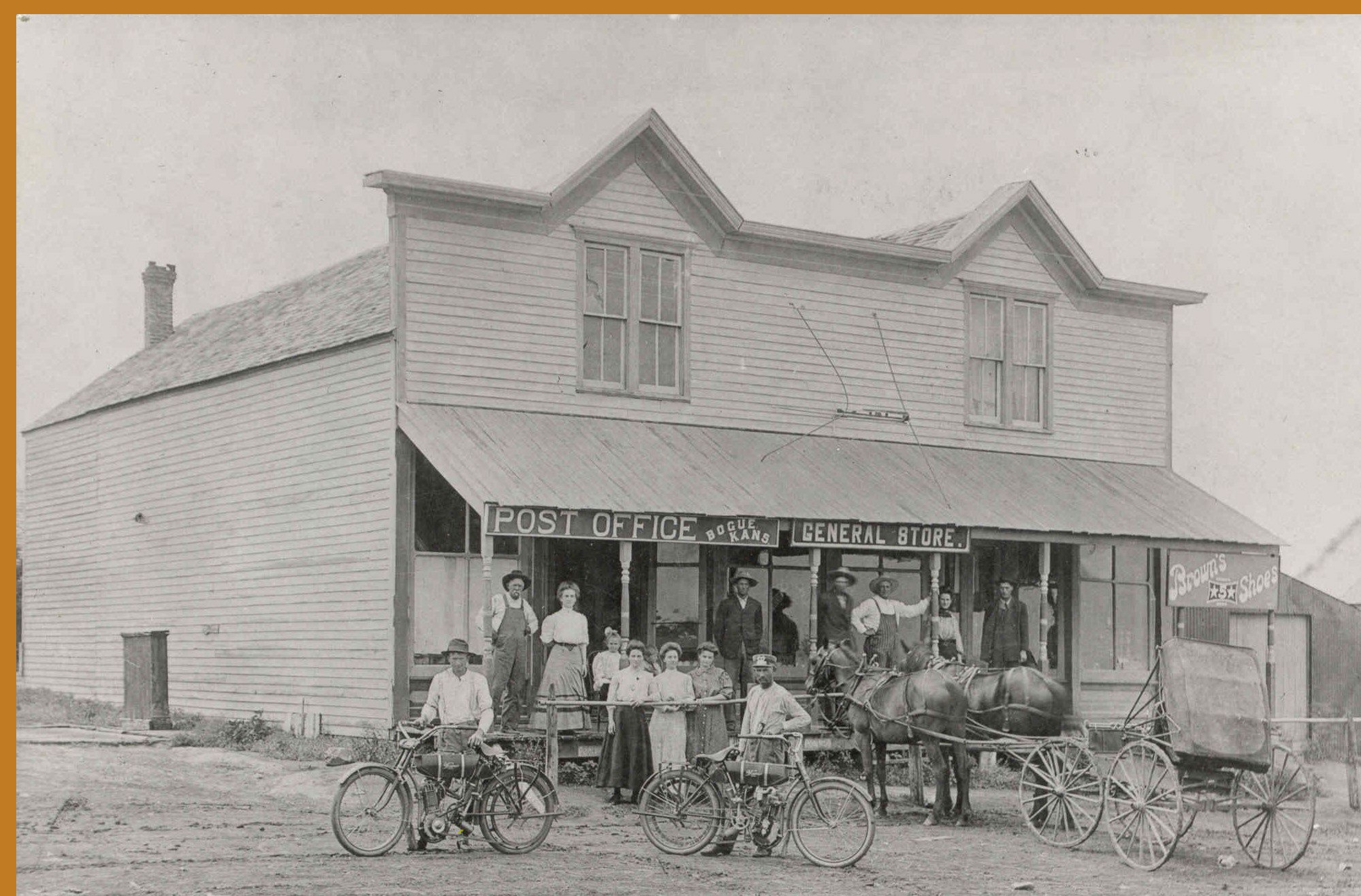
*WPA Projects*

The town's water tower was a Works Project Administration (WPA) project, built entirely of concrete. The concrete tower was replaced in 2017. Historic Wildhorse Township Hall is a sandstone building that was "built to last" by WPA laborers during the Great Depression. It serves as a local gathering place and is a tribute to the strength and love of community of the town's earlier citizens.

## Cuisine / Commerce

*Big Town Service in a Small Town Setting*

Bogue is small and relaxed, and in recent years can boast such businesses as a local cafe, a bank, a post office, an appliance service and repair store, a feed store, a grain elevator, an insurance investment firm, a beauty shop, a small music recording studio, a hydroponics tomato farm, several small construction and home repair contractors, an antique dealer, and a miniature horse farm.



*Early view of the Bogue Post Office and General Store. Note the two revolutionary motorcycles being shown off next to the more traditional horse and buggy.*