



COMPANY AND PRODUCT OVERVIEW



IGEL TECHNOLOGY
Thin & Zero Client
Software & Hardware

IGEL TECHNOLOGY

A world leader in thin client solutions, IGEL Technology helps organizations improve the agility, efficiency, and security of their virtual desktop and application delivery systems. We produce a very wide range of thin clients, based on Linux and Microsoft Windows, allowing customers to access a very broad spectrum of server-based infrastructures and applications. We also offer our powerful and intuitive management software for easy deployment and administration of thin clients throughout any-size organization. Partnerships with industry leaders like Citrix, Red Hat, VMware, and Microsoft ensure that we provide the most up-to-date technology and trust-worthy security to our clients. IGEL Technology has offices in Australia, Austria, Belgium, China, Germany, France, the Netherlands, Sweden, Switzerland, the United Kingdom and the United States. Our award-winning, in-house R&D team is located in Augsburg, Germany.

IGEL UNIVERSAL DESKTOPS OFFERING GREAT FLEXIBILITY



The firmware that comes standard with IGEL Universal Desktops contains a great variety of integrated software tools, clients and protocols. These features allow users to directly access the greatest variety of centralized IT infrastructures. They include traditional server-based computing (SBC) environments (Microsoft Terminal

Services and Ericom PowerTerm) as well as virtual desktop environments (VMware Horizon, Citrix XenDesktop/App and Microsoft RDS).

BENEFITS OF THE IGEL UNIVERSAL DESKTOPS AT A GLANCE:

- ▶ **Low investment costs:** no unnecessary hardware or software (modular design, management solution included at no extra cost)
- ▶ **Low operating costs:** energy-efficient hardware, an intuitive management solution, no licensing or update costs; long service life (free firmware updates up to 3 years after end-of-life for UD-series models), free 5-year warranty for the UD2, UD3, UD5, UD6 series
- ▶ **Greater security thanks to a locked-down system:** The USB ports can be selectively enabled to accept only certain peripheral devices. All IGEL thin clients support smartcard readers for secure two-factor authentication, personalization solutions or single sign-on (SSO) as well as selected USB token solutions
- ▶ **Free comprehensive technical support, free updates and service** (during warranty period), **global network of certified IGEL partners**
- ▶ **Flexible deployment:** full connectivity for peripheral devices as well as centralized IT systems and Web/VoIP/multimedia applications
- ▶ **Future-ready investment:** high processor and graphics performance, large RAM and flash memory, continuously developed firmware including technology and security updates
- ▶ **Outstanding user convenience:** top-notch design and careful assembly, stable firmware, high performance due to direct access to server-based applications, virtual desktops and cloud based applications, no cooling fans mean no noise, minimal generation of heat

ZERO CLIENTS – THE IGEL WAY



The IGEL Zero Clients for Citrix HDX, Microsoft RDS/RemoteFX and VMware Horizon deliver a true zero client experience. At the same time they overcome typical zero client limitations you may know from other vendors, like e.g. inflexibility, missing manageability and no technical support.

IGEL delivers specialized zero clients without compromise. They are dedicated and optimized to one of the three leading virtualization solutions, and they include free technical support. Using the appliance mode the IGEL Zero Clients boot fast and directly into VDI sessions like Citrix XenDesktop or Horizon.

Experience "Zero Touch Deployment" through fast and rule based configuration at the roll out phase. Reduce the desktop management to nearly zero, by profile based, automated management of settings. For you this means zero local management efforts.

IGEL Zero Clients are future proof. Free firmware updates allow you to make use of the latest features. If at any time you decide to change your VDI solution you can continue to use your zero client hardware. An UD-Upgrade-License will enable your IGEL Zero Clients to connect to other leading VDI solutions.

BENEFITS OF THE IGEL ZERO CLIENTS AT A GLANCE:

- ▶ **Specialized zero clients** dedicated to either Citrix HDX, Microsoft RDS/RemoteFX or VMware Horizon offering **rich user experience**
- ▶ **Low administration** efforts through zero touch deployment and zero local management
- ▶ **Affordable, cost efficient** desktop solution
- ▶ **Future proof** through free firmware updates and an **upgrade path** to other VDI solutions
- ▶ **Free 3 year hardware warranty**



START YOUR 30-DAY EVALUATION NOW! WWW.IGEL.COM/EVAL

thin clients

development

services

solutions

SOFTWARE

IGEL UNIVERSAL DESKTOP CONVERTER 2 (UDC2) SOFTWARE



The Universal Desktop Converter 2 (UDC2) thin client software provides a highly effective alternative to traditional thin client hardware. The software is installed as the operating system on PCs, notebooks and select thin clients, and turns the hardware into

a powerful software-based and universally deployable thin client allowing secure access to almost all centralized IT infrastructures. Users have stable and reliable access to cloud computing services, server-based computing (SBC) applications and virtualized desktops (VDI). The local desktop operating systems are unified and standardized, and are centrally managed by IGEL's user-friendly Universal Management Suite (UMS), the industry's leading device management platform. The UDC2 software is available at a low, one-time cost. The UMS is included – free.



UNIVERSAL DESKTOP CONVERTER 2 (UDC2) SOFTWARE

SYSTEM REQUIREMENTS

RAM: 1 GB

Flash- / HDD-Memory (IDE, USB or SATA): 1 GB

BIOS requirements: USB boot support, alternative: DVD-Boot support

Min. requirements Microsoft RemoteFX: CPU ≥ 800 MHz, SSE2 Support

SUPPORTED HARDWARE

Acer Veriton N260G / N281G / N2110G

Advantech-DLoG MTC 6 / DLT-V7210 / DLT-V7212

DELL / Wyse C90LE / C90LEW / D10D / D50D / R50L / Z50D / Z90Q7

Fujitsu Futro S450-2/S550/S550-2/S700/S720/S900/S920/X913/X923

HP t510/t520/t5565/t5630w/t5730/t5735/t5745/t610/t620/t720/t820

Lenovo ThinkCentre M32

Onyx Healthcare Venus-222

Samsung TC190 / TC240

Stone N130 Notebook

SUPPORTED PCs

Standard x86-compatible PC hardware

AVAILABLE COMPONENTS

UDC token (USB)

UDC-LX

SOFTWARE FEATURES

see Firmware table at the back *

HARDWARE COMPATIBILITY

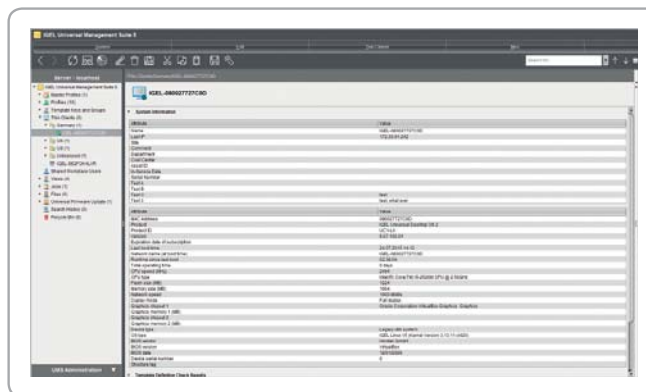
see www.igel.com/hwdb

IGEL UNIVERSAL MANAGEMENT SUITE (UMS)



With IGEL thin client computing, the total cost of ownership (TCO) of the desktop environment can be cut by up to 70%. A substantial portion of this potential for optimizing computing environments is due to powerful features of the IGEL Universal Management Suite, which comes standard with all IGEL units. It offers numerous local

protocols, software clients, tools and security features, undergoes continuous development and refinement and sets the standard when it comes to secure and fast management of extensive thin client installations located across several countries/regions. The IGEL Universal Management Suite supports a wide variety of operating systems, databases and directory services, such as Microsoft Active Directory, making it very easy to integrate into existing installations. Furthermore, the IGEL Universal Management Suite also permits problem-free, compatible management of earlier IGEL models.



IGEL UNIFIED MANAGEMENT AGENT



UMA, the IGEL Unified Management Agent, delivers Workspace Management of the future, today. Devices running a Windows 7 or Windows 10 operating system and an installed UMA are reliably and securely managed by our UMS. In this way UMA managed devices fit seamlessly into the IGEL solution

portfolio – whether they are thin clients, notebooks or workstations. A change or conversion of the existing Windows operating system is not necessary.

UNIVERSAL MULTIDISPLAY



The software solution IGEL Universal MultiDisplay allows to combine up to four Universal Desktop standard devices cost-effectively into one workstation with up to eight screens which can be remotely administered. The heart of the solution is the IGEL UD5 LX (or IGEL UD6 LX) thin client which provides two monitor connections.

With an integrable network card, it can be set as the master device and manage up to three Linux-based standard thin clients, which automatically configure themselves as satellites, each providing up to two additional monitors.

ADDITIONAL SHARED WORKPLACE FEATURE



The "Shared WorkPlace" feature, which can be optionally licensed, is an enhancement of IGEL's thin client software. It allows user-dependent configuration based on setting profiles created in the IGEL UMS and linked to the user accounts in the Active Directory. Typical applications for the Shared WorkPlace option are those workstations used for shift work or in call centers, where different staff members use the same device and need their own individual settings, such as for session types or mouse-button configuration for right/left-handed operation. Another common use can be found in roaming environments, where users frequently switch workstations, such as in hospitals and at service/ticket counters, checkouts (POS) and customer reception areas. After a user has logged on, the Shared WorkPlace thin client automatically receives the appropriate configuration for that user from the UMS server, which itself retrieves it from the UMS database of individual and group profiles. These profiles can be readily assigned to users in the IGEL Universal Management console simply by drag-and-drop.

IGEL UMS HIGH AVAILABILITY EXTENSION



IGEL thin clients will boot up and function securely and reliably even if they aren't able to establish contact with the IGEL Universal Management Suite (UMS). In this case, they simply use the last locally saved settings. However, to ensure 100% availability of the UMS, the High Availability Extension offers the option of creating a redundant set of components, allowing both internal and external requirements, rules and regulations for failsafe operation of all systems to be met. In particular, in cases where there are separate user-specific configuration settings for a shared workplace, it's good practice to deploy this kind of failsafe design to ensure that all users of the same workstation can obtain their individual settings as needed. In addition, this extension enables load balancing between the individual UMS instances, allowing new settings to be distributed even in environments with more than 500 devices that are all booting up at essentially the same time. The High Availability Extension is part of the UMS. To evaluate the functionality the UMS contains five preinstalled test licenses. However, actual deployment of the extension requires payment of an extra fee.

UNIVERSAL CUSTOMIZATION BUILDER



Expand IGEL firmware yourself – easily and reliably! With the Universal Customization Builder (UCB), the firmware for IGEL Universal Desktop thin clients can easily and reliably be expanded and adapted to meet your needs. For example, you may choose to install local device drivers or special applications. You can even set important Windows registry keys – without detailed knowledge of Shell or Windows scripting!

IGEL MANAGEMENT INTERFACE



With the IGEL Management Interface (IMI), the IGEL Universal Management Suite (UMS) can connect via a standard REST API to existing enterprise management systems (such as Microsoft SCCM or IBM Tivoli). In addition, IMI provides the interface for REST-compatible programming languages to connect autonomous systems together. So the management of IGEL Clients can take place from the Enterprise Management system or through additional company-specific scripts or programs, in conjunction with the industry-leading IGEL Universal Management Suite (UMS).

* The functionality available will depend upon the specifications of the original hardware device

HARDWARE SERIES



HARDWARE		IZ2 / UD2	IZ3 / UD3	UD5	UD6	UD9 (21")
CPU		Intel E3815 1.5 GHz (Single-Core)	AMD Stepe Eagle GX-412HC 1.2 – 1.6 GHz (Quad-Core)	Intel Celeron J1800 2.41 – 2.58 GHz (Dual-Core)	Intel Celeron J1900 1.99 – 2.42 GHz (Quad-Core)	Intel Celeron J1900 1.99 - 2.42 GHz (Quad-Core)
POWER CONSUMPTION	Idle Sleep	5W 1W	6W 0.5W	8W 1W	8W 1W	24W 3W
FLASH		2 GB	2 GB (LX) 8 GB (W7+) *	2 GB (LX) 4 GB (W7) 8 GB (W7+) *	2 GB (LX) 4 GB (W7) 8 GB (W7+) *	2 GB (LX) 4 GB (W7) 8 GB (W7+)
RAM		2 GB DDR3L	2 GB (LX / W7+) DDR3L	2 GB (LX / W7 / W7+) DDR3L	2 GB (LX / W7 / W7+) DDR3L	2 GB (LX / W7 / W7+) DDR3L
VIDEO MEMORY		64 – 256 MB	128 – 1024 MB	64 – 512 MB	64 – 512 MB	128 – 512 MB
MAX RESOLUTION		Dualview 1920 x 1200	1 x DisplayPort 1.2 3840 x 2160 1 x DVI 1920 x 1200	1x DisplayPort 1.1a 2560 x 1600 1x DVI-I 1920 x 1200	1x DisplayPort 1.1a 2560 x 1600 1x DVI-I 1920 x 1200	Dualview Internal (FullHD) 1920 x 1080 1x DisplayPort 1.2a 2560 x 1600
WARRANTY		3 / 5 years	3 / 5 years	5 years	5 years	3 years
SOFTWARE MAINTENANCE (AFTER EOL)		0 / 3 years	0 / 3 years	3 years	3 years	3 years
IZ HDX	 LINUX	IZ2 HDX	IZ3 HDX			
IZ RFX		IZ2 RFX	IZ3 RFX			
IZ HORIZON		IZ2 Horizon	IZ3 Horizon			
UNIVERSAL DESKTOP (UD)		UD2 LX	UD3 LX	UD5 LX	UD6 LX	UD9 LX UD9 LX Touch
UNIVERSAL DESKTOP (UD)	 W7 / W7+		UD3 W7+	UD5 W7 / UD5 W7+	UD6 W7 / UD6 W7+	UD9 W7 / UD9 W7+ UD9 W7 Touch / UD9 W7+ Touch

* larger SSD modules on request

OPERATING SYSTEM	IGEL LINUX (LX)				W7 / W7+
	IZ HDX	IZ RFX	IZ HORIZON	UD	
MANAGEMENT					UD
Centralized and standardized client management (Unified Management)	X	X	X	X	X
Full remote management	X	X	X	X	X
Central device configuration (profile-based)	X	X	X	X	X
Template Profiles (customizable profiles, available from version 4.08.100)	X	X	X	X	X
Master Profiles (available from UMS version 4.09.100)	X	X	X	X	X
User-friendly device organization by means of IGEL Views	X ¹	X ¹	X ¹	X ¹	X ¹
Remote power management	X	X	X	X	X
Scheduled client administration (jobs)	X	X	X	X	X
Firmware management (Universal Firmware Update)	X	X	X	X	X
Rights distribution for group-based administration	X ¹	X ¹	X ¹	X ¹	X ¹
AD/LDAP integration	X ¹	X ¹	X ¹	X ¹	X ¹
Standardized firmware extension (UCB), optional				X	X
Scalable high availability (HA), optional	X ¹	X ¹	X ¹	X ¹	X ¹
Secure mirroring (SSL), including rights management and audit compliance	X	X	X	X	X (available from version 3.09.100)
Shared WorkPlace support for multi-user scenarios (optional)	X	X	X	X	X
Helpdesk Report Generator	X ¹	X ¹	X ¹	X ¹	X ¹
File transfer TC <-> UMS	X ¹	X ¹	X ¹	X ¹	X ¹
Audit-compliant logging (events, actions, VNC)	X	X	X	X	X ⁴
Administrative tasks (e.g., time-controlled creation, backups and views)	X ¹	X ¹	X ¹	X ¹	X ¹
Remote server access (Web Start)	X ¹	X ¹	X ¹	X ¹	X ¹
NETWORK STANDARD: TCP/IP, PXE, WAKE-ON-LAN, DNS, DHCP, PPTP, PPPoE (DSL VIA ONBOARD LAN)					
SNMP					X
L2TP					X
Third Party VPN: NCP / Genucard // OpenVPN	X / X ⁵ / X	X / X ⁵ / X	X / X ⁵ / X	X / X ⁵ / X	X / - / X
COMMUNICATION: Local Browser (LX: Firefox; W7/W7+: Internet Explorer)					
Citrix XenDesktop / XenApp / HDX / ICA	X			X	X
Microsoft RemoteApp / RDS / RDP / RemoteFX / RD Gateway		X		X	X
VMware Horizon Client (PCoIP and RDP)			X	X	X
Ericom PowerTerm Terminal Emulation (activation required)				X	X
Native IBM 5250 Emulation				X	X
2X RAS / Nimboxx VERDE VDI / Cendio ThinLinc / Systancia AppliDis Fusion 4				X	X
Leostream Connection Broker / NoMachine NX / Red Hat Enterprise Virtualization / Dell vWorkspace				X	X
PRINT SERVICES: LPD/IPP (LX) AND SHARED PRINTER (W7/W7+)					
Cortado ThinPrint / OSP Convert4Print / Common UNIX Printing System	X	X	X	X	X
ADDITIONAL SOFTWARE FEATURES					
Java Runtime Environment	X	X	X	X	X
PDF Reader / Voice over IP (Ekiga)				X	X
Media Player, including multimedia redirection	X ²	X ²	X ²	X ⁷	X
USB redirection and management (FabulaTech / DriveLock, license required)	X	X	X	X	X / X ⁸
Smartcard / Touchscreen / Signature pad / Digital dictation support	X	X	X	X	X / - / - / X ³
Unified Communication (Microsoft Skype for Business (Lync) / Cisco VXi)	X / -		X / -	X / -	X ² / X ^{3,6}
Imprivata OneSign Embedded / Evidian SSO Enterprise / Daradigm SSO	X / - / X		X / - / -	X	X ³ / - / X ³
IGEL FEATURES					
USB rights management and access control	X	X	X	X	X
Fail-safe firmware update	X	X	X	X	X
Appliance mode for selected sessions	X	X	X	X	X
CI-compliant desktop branding	X	X	X	X	X
Cafe Wireless (desktop Wi-Fi manager and Wi-Fi UMS management)	X	X	X	X	X
Power Management (available from version UMS 5.06.100)					X

All IGEL clients come with a standard two-year warranty (starting from the date of delivery). Take advantage of our free online registration and, by doing so, automatically extend the hardware warranty period for your IGEL thin clients, as per our original end-customer warranty agreement. By completing this one-time registration, you will also obtain extended warranty periods for all future IGEL devices. This offer of warranty extension does not apply to optional accessories. IGEL is a registered trademark of IGEL Technology GmbH. All hardware and software names are registered trademarks of the respective manufacturers. Errors and omissions excepted. ©08/2016 IGEL Technology | 122-US-2-32 | WEEE-Reg.-Nr. DE 79295479

¹ OS independent. ² Not as a session. ³ Not pre-installed, ⁴WES, no VNC logging, ⁵ Additional hardware required, ⁶W7+ only, ⁷ Redirection: Codec Pack required