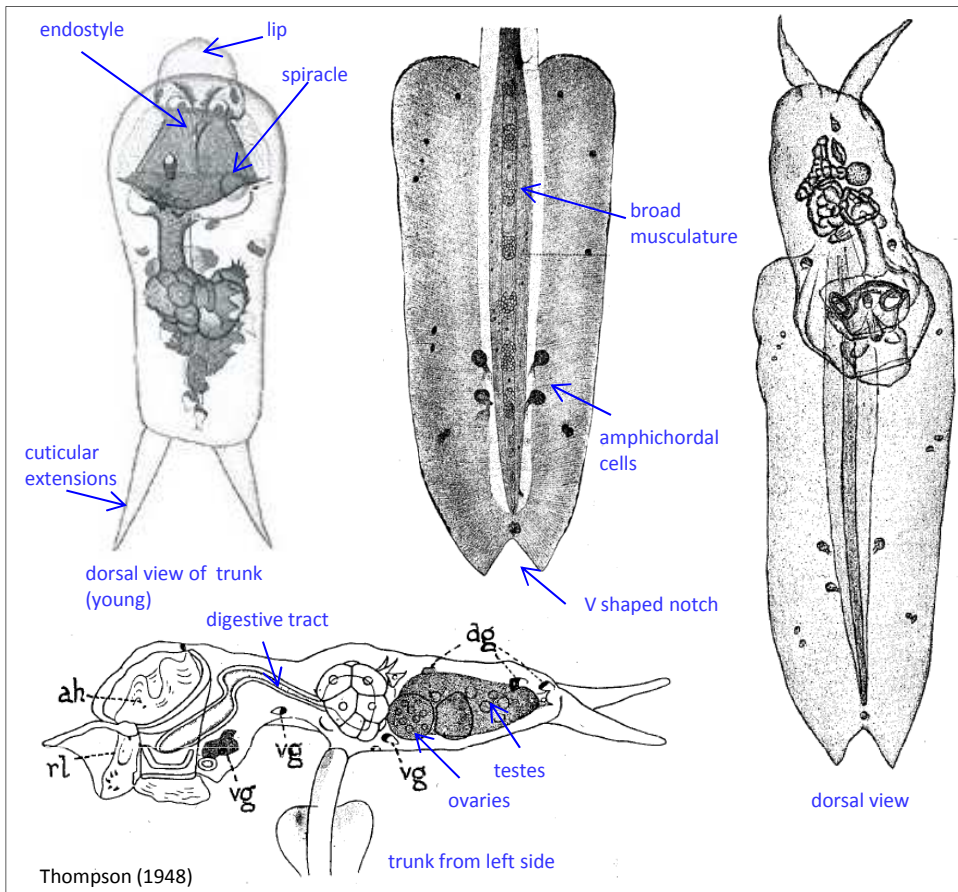


Fritillaria pellucida

(Busch, 1851)



Phylum Chordata
Order Fritillariidae
Family Fritillariinae



Synonyms

Eurycercus pellucidus
Fritillaria furcata

Size

- Trunk up to 2.2 mm long
- Tail up to 3 mm

Family notes

- Trunk elongate, flattened dorso-ventrally
- Tail rarely longer than trunk. Broad, delicate and thin
- Spiracles situated anteriorly
- Endostyle curved upwards

Species notes

- Trunk often damaged and these features can be hard to see
- Trunk rectangular and flattened, with 2 relatively long cuticular extension
- Mouth with protruding upper lip
- Digestive tract axis transverse
- Gonads asymmetrically arranged
- Testis on right side of body; cylindrical and transverse in young specimens, later becoming V-shaped
- Ovary spherical and on left side of body

Tail

- Musculature broad
- V shaped notch at rear
- Two amphichordal cells on each side, with ejective ducts (cells may be reduced to 3). Cells are not contiguous as in *F. megachile*

Distribution

- Warm water
- Common, especially off New South Wales

Distribution

Ecology

Source

Gibbons pers. comm. (2012)
 Thompson (1948)
 Marine species identification portal (2011)

(Full reference available at <http://www.imas.utas.edu.au/zooplankton/references>)



Fritillaria pellucida

(Busch, 1851)

Phylum	Chordata
Order	Fritillariidae
Family	Fritillariinae

